

Roundtable on Sustainable Palm Oil Certification
R S P O

[✓] Eligibility

Name of Management Organisation : **KOPERASI PRODUSEN MANDIRI GAHARU SERATUS BOSAR MALIGAS**

Plantation Name : **KOPERASI PRODUSEN MANDIRI GAHARU SERATUS BOSAR MALIGAS**

Location : Village of Bosar Maligas., Sub District of Bosar Maligas, District of Simalungun, Province of Sumatera Utara, Indonesia

Certificate Code : **MUTU-RSPO/155**

Date of Certificate Issue : 02 March 2021 Date of License Issue : 02 March 2021

Date of Certificate Expiry : 01 March 2023 Date of License Expiry : 01 March 2022

Assessment	Assessment Date	PT. Mutuagung Lestari Auditor	Reviewed by	Approved by
Eligibility	15 to 17 December 2020	Trismadi Nurbayuto (Lead Auditor), Brigitta Prita	Ganapathy Ramasamy	Ardiansyah

Assessment	Approved by MUTUAGUNG LESTARI on:
Eligibility	02 March 2021

TABLE OF CONTENT
FIGURE

Figure 1.a. Location Map of Koperasi Produsen Mandiri Gaharu Seratus Bosar Maligas	2
Figure 1.b. Location Map of Koperasi Produsen Mandiri Gaharu Seratus Bosar Maligas	3
Figure 2. Operational Map of Koperasi Produsen Mandiri Gaharu Seratus Bosar Maligas on Bosar Maligas Village	4
Figure 3. Operational Map of Koperasi Produsen Mandiri Gaharu Seratus Bosar Maligas on Dusun Pengkolan Village & Adil Makmur Village	5
Figure 4. Operational Map of Koperasi Produsen Mandiri Gaharu Seratus Bosar Maligas on Dusun Pengkolan Village & Sei Torop Village	6
Figure 5. Operational Map of Koperasi Produsen Mandiri Gaharu Seratus Bosar Maligas on Sei Torop Village	7

Abbreviations Used	8
--------------------	---

1.0 SCOPE of the CERTIFICATION ASSESSMENT

1.1 Assessment Standard Used	9
1.2 Organisation Information	9
1.3 Type of Assessment	9
1.4 Location of Mill and Plantations	9
1.5 Description of Area Statement	25
1.6 Planting Year and Cycles	26
1.7 Description of Supply Base	26
1.8 Tonnage Product	37
1.9 Other Certification	48

2.0 ASSESSMENT PROCESS

2.1 Assessment Team	49
2.2 Assessment Methodology, Assessment Process and Locations of Assessment	49
2.3 Stakeholder Consultation and Stakeholders Contacted	50
2.4 Determining Next Assessment	50

3.0 ASSESSMENT FINDINGS

3.1 Summary of Assessment Report of the RSPO Certification	51
3.2 Conformity Checklist of Certificate and Logo Use	61
3.3 Identification of Findings, Corrective Actions, Observations, Opportunity for Improvement and Noteworthy Positive Components	62
3.4 Summary of Arising Issues from Public, Management and Auditor Responses	67

4.0 CERTIFIED ORGANISATION'S ACKNOWLEDGEMENT OF INTERNAL RESPONSIBILITY

4.1 Formal Signing of Assessment Findings	68
---	----

APPENDICES

1. List of Stakeholders Contacted in the RSPO Certification Process	69
2. Assessment Program	71

Figure 1.a. Location Map of Koperasi Produsen Mandiri Gaharu Seratus Bosar Maligas

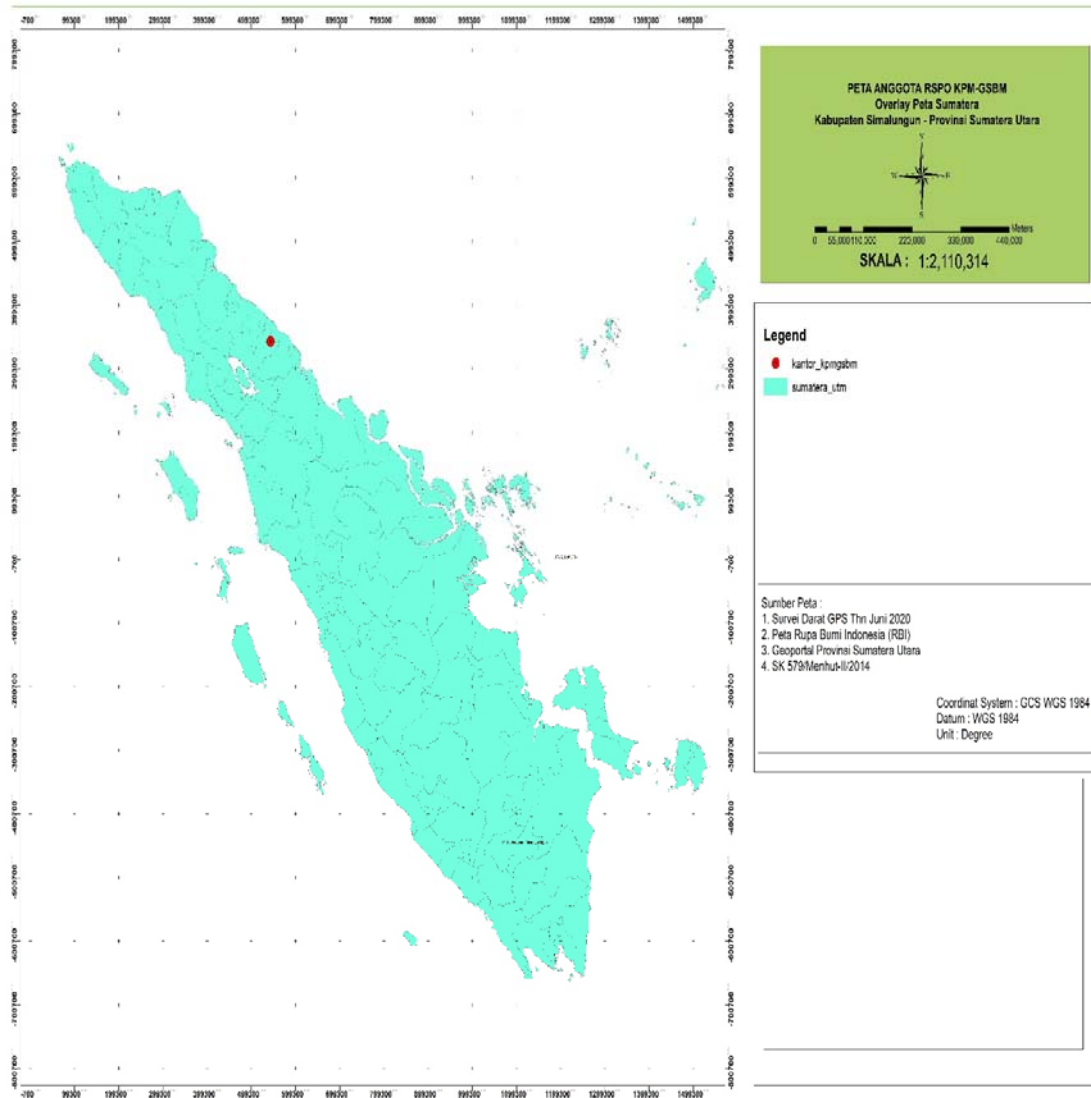


Figure 1.b. Location Map of Koperasi Produsen Mandiri Gaharu Seratus Bosar Maligas

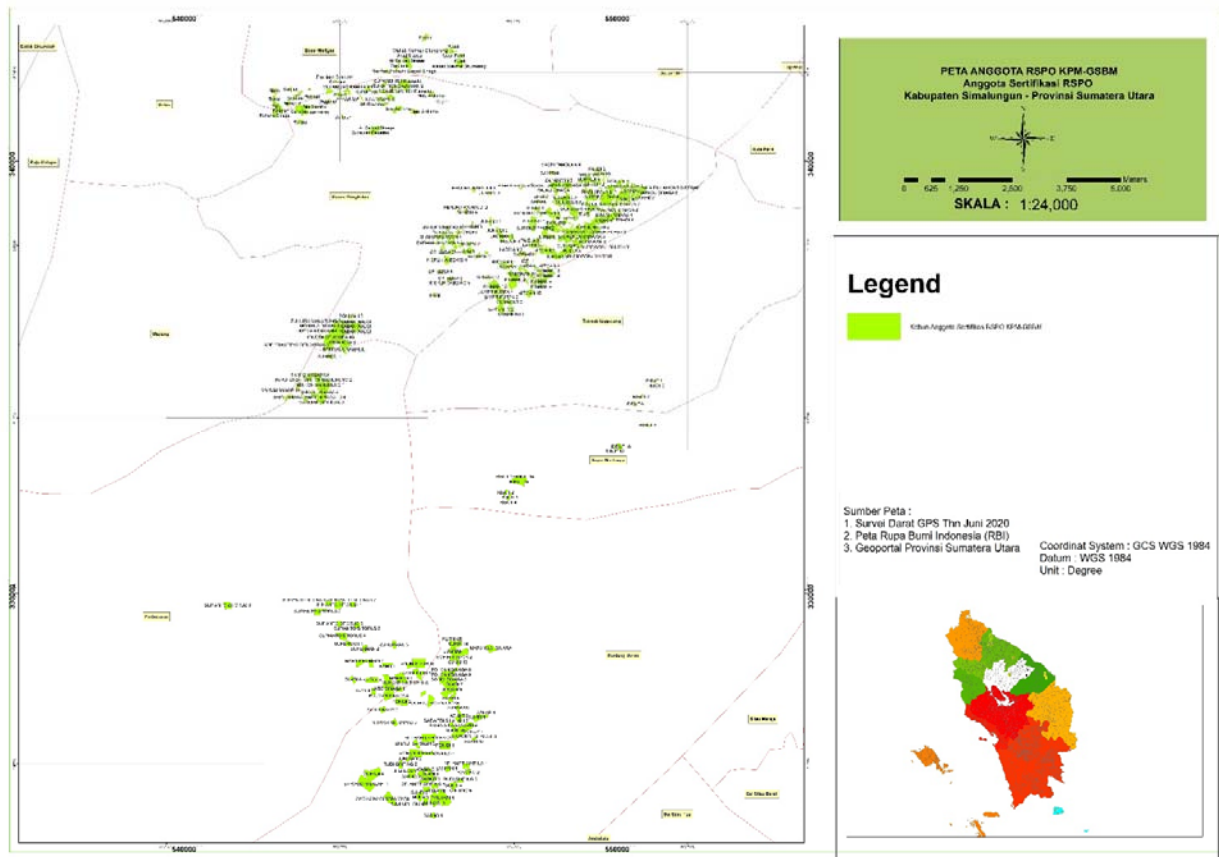


Figure 2. Operational Map of Koperasi Produsen Mandiri Gaharu Seratus Bosar Maligas on Bosar Maligas Village

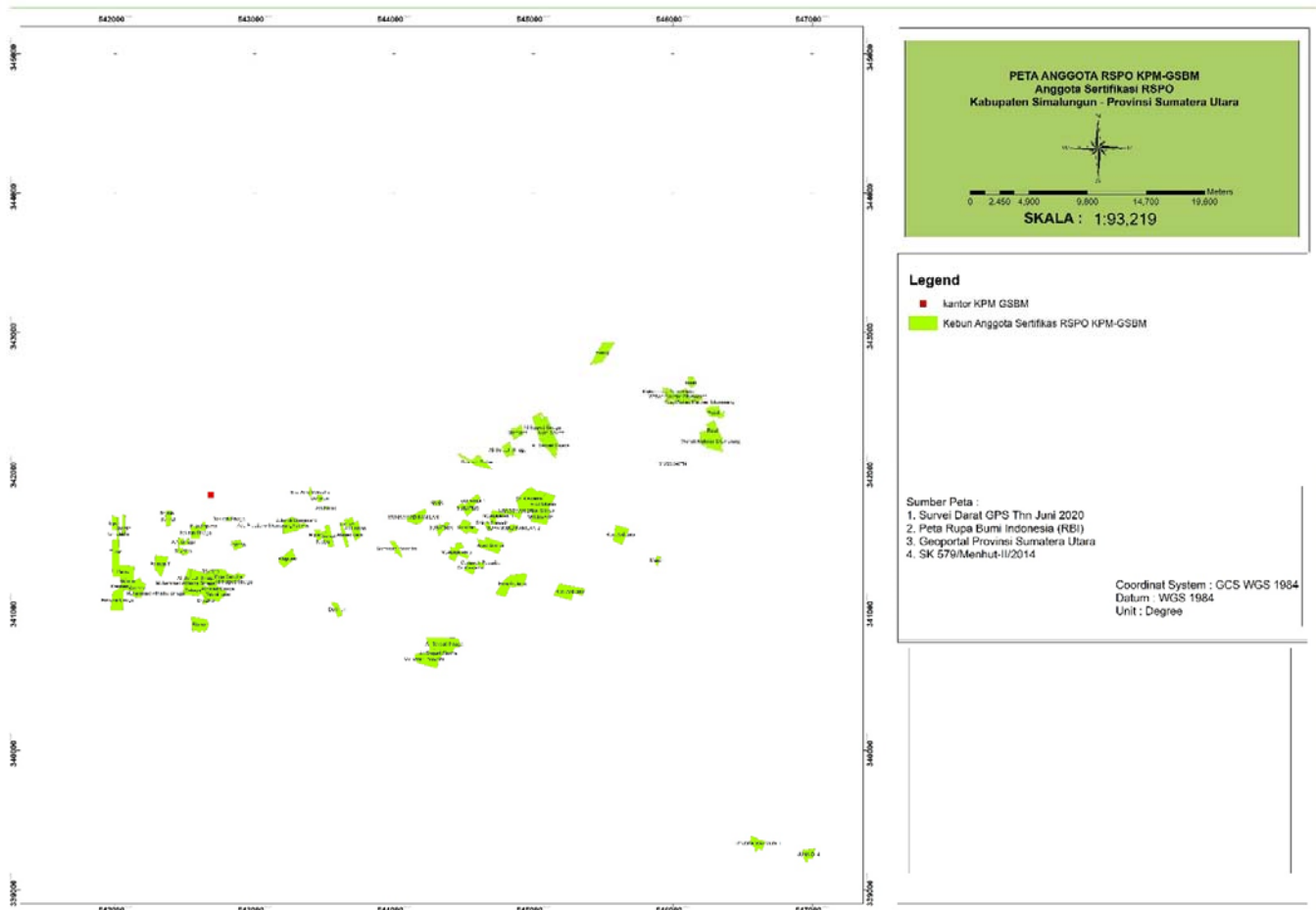


Figure 3. Operational Map of Koperasi Produsen Mandiri Gaharu Seratus Bosar Maligas on Dusun Pengkolan Village & Adil Makmur Village

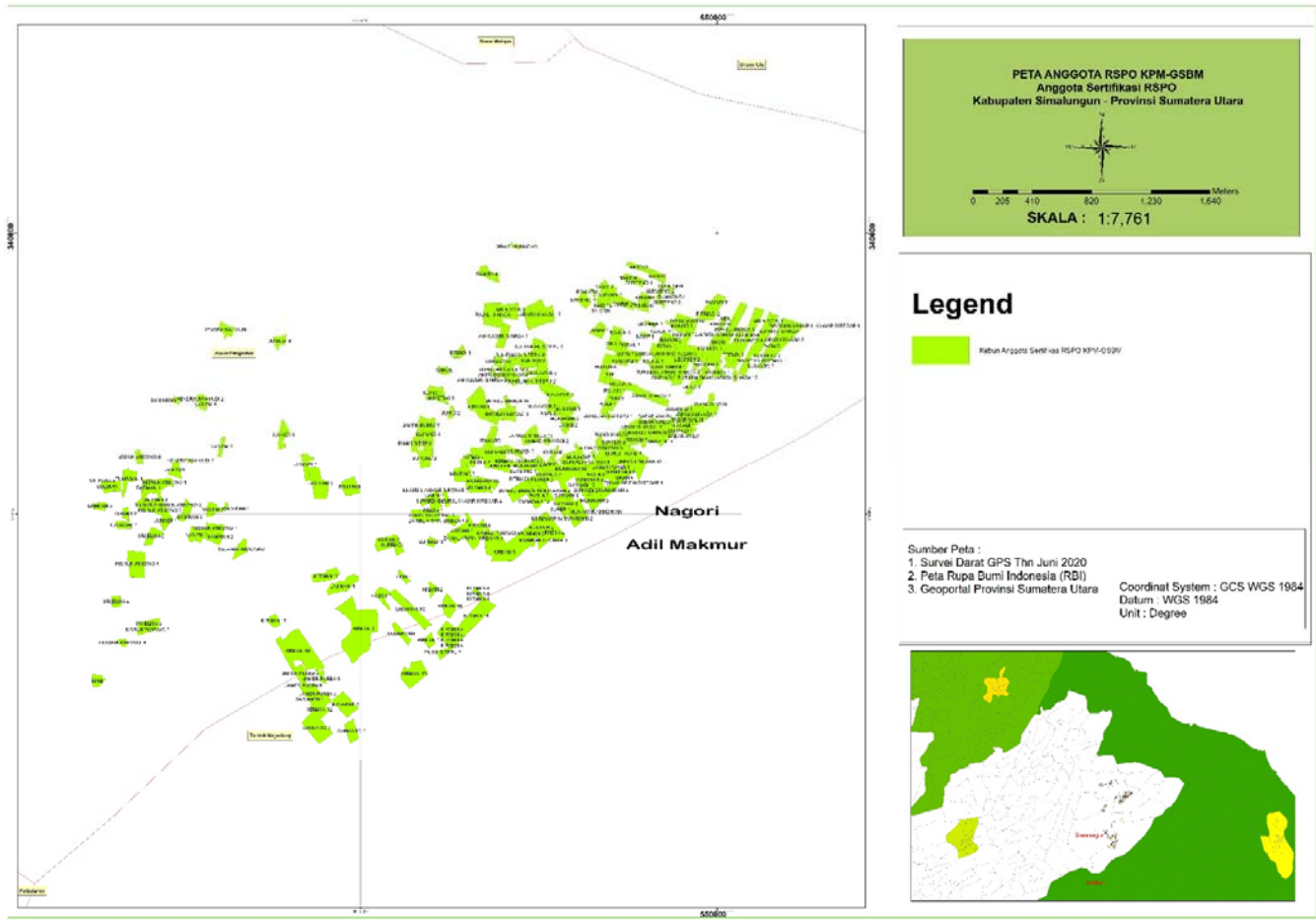


Figure 4. Operational Map of Koperasi Produsen Mandiri Gaharu Seratus Bosar Maligas on Dusun Pengkolan Village & Sei Torop Village

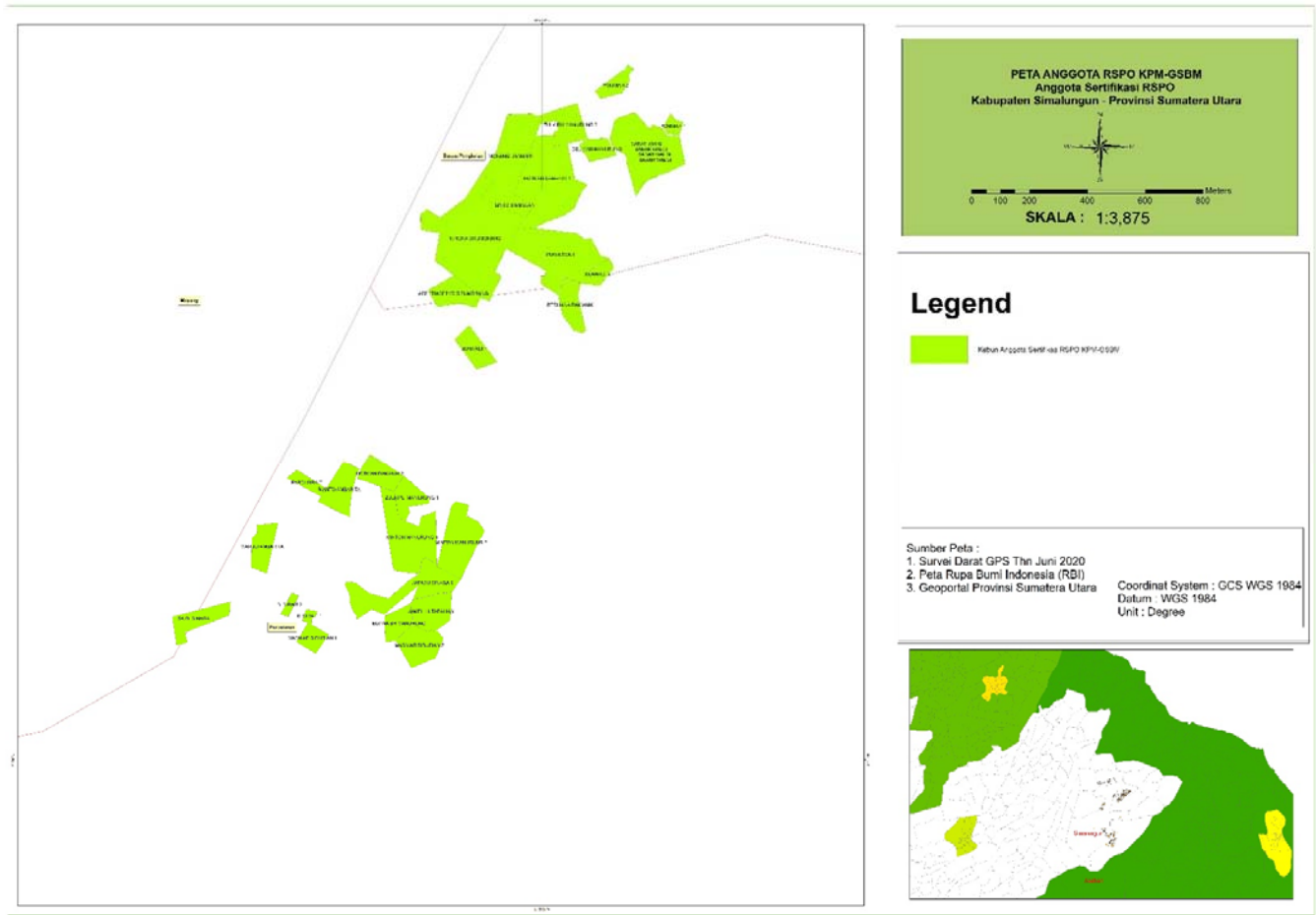
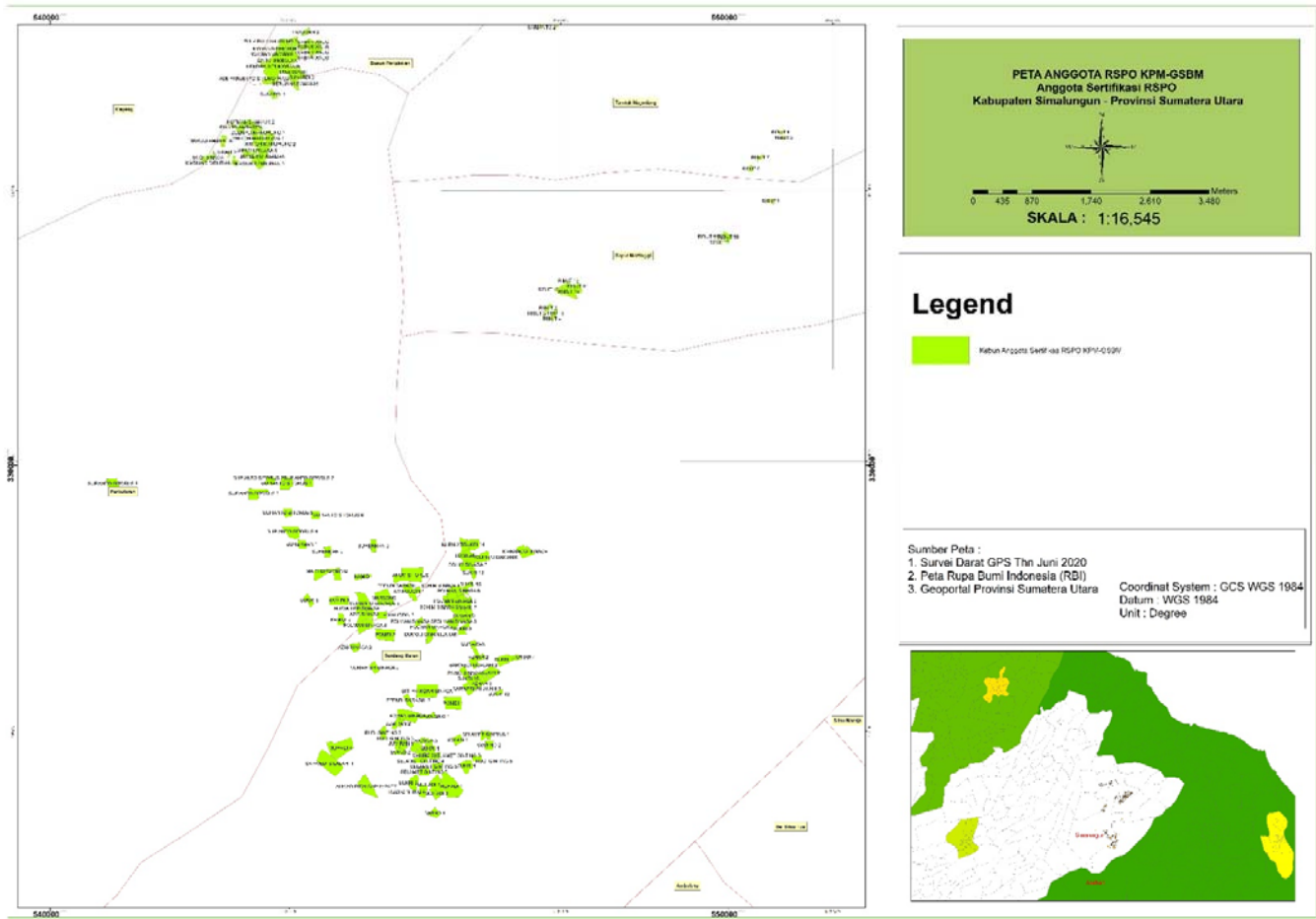


Figure 5. Operational Map of Koperasi Produsen Mandiri Gaharu Seratus Bosar Maligas on Sei Torop Village



Abbreviations Used

AMAN	:	<i>Aliansi Masyarakat Adat Nasional</i>
BMP	:	Best Management Practices
CB	:	Certification Bodies
CPO	:	Crude Palm Oil
CSPK	:	Certified Sustainable Palm Kernel
CSPKE	:	Certified Sustainable Palm Kernel Expeller
CSPKO	:	Certified Sustainable Palm Kernel Oil
CSPO	:	Certified Sustainable Palm Oil
FFB	:	Fresh Fruit Bunch
HCS	:	High Carbon Stocks
HCV	:	High Conservation Values
ICS	:	Internal Control System
IDR	:	Indonesian Rupiah
ISPO	:	Indonesia Sustainable Palm Oil
ISO	:	International Standard Organization
KPM-GSBM	:	Koperasi Produsen Mandiri Gaharu Seratus Bosar Maligas
MS-A	:	Milestone A
OFI	:	Opportunity For Improvement
OHS	:	Occupational, Health and Safety
RSPO	:	Roundtable on Sustainable Palm Oil
RSPO P&C	:	Roundtable on Sustainable Palm Oil Principle and Criteria
SEIA	:	Social Environment Impact Assessment
SHM	:	<i>Sertipikat Hak Milik</i>
SKT	:	<i>Surat Keterangan Tanah</i>
SOP	:	Standard Operational Procedure
SPPL	:	<i>Surat Pernyataan Pengelolaan Lingkungan</i>
STDB	:	<i>Surat Tanda Daftar Budidaya</i>
WALHI	:	Wahana Lingkungan Hidup Indonesia
WHO	:	World Health Organization
WWF	:	World Wild Fund

1.0	SCOPE of the CERTIFICATION ASSESSMENT			
1.1	Assessment Standard Used	<ul style="list-style-type: none">• RSPO Certification System for Principles and Criteria, 14 June 2017.• RSPO Independent Smallholder Standard, 6 November 2019		
1.2	Organisation Information			
1.2.1	Organisation name listed in the certificate	KOPERASI PRODUSEN MANDIRI GAHARU SERATUS BOSAR MALIGAS (KPM-GSBM)		
1.2.2	Contact person	Ahmad Safri		
1.2.3	Organisation address and site address	Jl Kapten Kahar Sinaga-Kelurahan Bosar Maligas, Kecamatan Bosar Maligas, Kabupaten Simalungun, Sumatera Utara, Indonesia		
1.2.4	Telephone	+6285262326897		
1.2.5	Fax	-		
1.2.6	E-mail	koperasi.mandiri.gaharu.100@gmail.com		
1.2.7	Web page address	-		
1.2.8	Management Representative who completed the application for certification	Ahmad Safri (Group Manager)		
1.2.9	Registered as RSPO member	1-0304-20-000-00, September 15 th 2020		
1.3	Type of Assessment			
1.3.1	Scope of Assessment and Number of Management Unit	<i>KPM GSBM consist of 217 smallholders (488 plots)</i>		
1.3.2	Type of certificate	<i>Single</i>		
1.4	Locations of Mill and Plantation			
1.4.1	Location of Certification Scope of Supply Base			
	Name of Smallholder	Location	Coordinate	
			Latitude	Longitude
	Ahmad Suprayogi	Adil Makmur Village, Bosar Maligas Sub District, Simalungun District, Sumatera Utara Province, Indonesia	N 3° 3' 52.709"	E 99° 26' 12.825"
			N 3° 3' 46.562"	E 99° 26' 21.765"
			N 3° 3' 39.550"	E 99° 26' 24.687"
			N 3° 3' 24.476"	E 99° 26' 11.070"
	Aidil	Adil Makmur Village, Bosar Maligas Sub District, Simalungun District, Sumatera Utara Province, Indonesia	N 3° 4' 13.906"	E 99° 27' 1.530"
			N 3° 3' 52.879"	E 99° 26' 23.896"
	Amiruddin Sinaga	Adil Makmur Village, Bosar Maligas Sub District, Simalungun District, Sumatera Utara Province, Indonesia	N 3° 4' 10.232"	E 99° 26' 11.939"
			N 3° 4' 1.912"	E 99° 26' 9.864"
			N 3° 3' 42.083"	E 99° 26' 17.301"
	Ardin	Adil Makmur Village, Bosar Maligas Sub District, Simalungun District, Sumatera Utara Province, Indonesia	N 3° 3' 48.384"	E 99° 26' 46.928"
	Budianto	Adil Makmur Village, Bosar Maligas	N 3° 4' 9.227"	E 99° 27' 10.344"

	Sub District, Simalungun District, Sumatera Utara Province, Indonesia	N 3° 4' 4.766"	E 99° 26' 54.396"
Dalwanti	Adil Makmur Village, Bosar Maligas Sub District, Simalungun District, Sumatera Utara Province, Indonesia	N 3° 3' 39.576"	E 99° 26' 32.998"
Efendi	Adil Makmur Village, Bosar Maligas Sub District, Simalungun District, Sumatera Utara Province, Indonesia	N 3° 4' 6.629"	E 99° 26' 2.088"
Fahmi Sitepu	Adil Makmur Village, Bosar Maligas Sub District, Simalungun District, Sumatera Utara Province, Indonesia	N 3° 3' 46.049"	E 99° 25' 52.481"
		N 3° 2' 58.703"	E 99° 25' 58.820"
Fitriadi	Adil Makmur Village, Bosar Maligas Sub District, Simalungun District, Sumatera Utara Province, Indonesia	N 3° 3' 37.789"	E 99° 26' 18.607"
		N 3° 3' 50.458"	E 99° 26' 52.768"
		N 3° 4' 15.212"	E 99° 26' 57.841"
Hasan	Adil Makmur Village, Bosar Maligas Sub District, Simalungun District, Sumatera Utara Province, Indonesia	N 3° 3' 46.049"	E 99° 25' 44.904"
		N 3° 3' 46.049"	E 99° 25' 44.904"
Heri	Adil Makmur Village, Bosar Maligas Sub District, Simalungun District, Sumatera Utara Province, Indonesia	N 3° 3' 47.523"	E 99° 26' 21.574"
Irwanto	Adil Makmur Village, Bosar Maligas Sub District, Simalungun District, Sumatera Utara Province, Indonesia	N 3° 3' 46.578"	E 99° 26' 8.865"
Iskamalludin	Adil Makmur Village, Bosar Maligas Sub District, Simalungun District, Sumatera Utara Province, Indonesia	N 3° 3' 54.937"	E 99° 26' 58.900"
Jamer Purba	Adil Makmur Village, Bosar Maligas Sub District, Simalungun District, Sumatera Utara Province, Indonesia	N 3° 2' 54.026"	E 99° 25' 26.400"
		N 3° 2' 53.380"	E 99° 25' 31.251"
		N 3° 3' 40.271"	E 99° 26' 36.396"
		N 3° 3' 50.100"	E 99° 25' 53.545"
Japsu Sinaga	Adil Makmur Village, Bosar Maligas Sub District, Simalungun District, Sumatera Utara Province, Indonesia	N 3° 3' 35.256"	E 99° 26' 15.689"
		N 3° 4' 8.471"	E 99° 27' 3.734"
		N 3° 4' 10.621"	E 99° 27' 2.351"
		N 3° 4' 6.279"	E 99° 26' 55.613"
		N 3° 4' 2.024"	E 99° 26' 51.423"
		N 3° 3' 56.600"	E 99° 26' 44.958"
		N 3° 3' 41.070"	E 99° 26' 20.877"
		N 3° 1' 39.198"	E 99° 23' 14.348"
		N 3° 3' 38.712"	E 99° 26' 23.257"
		N 3° 3' 41.607"	E 99° 26' 42.274"
		N 3° 3' 55.530"	E 99° 26' 12.853"
		N 3° 4' 1.277"	E 99° 27' 3.943"
		N 3° 3' 47.845"	E 99° 26' 18.121"
		N 3° 4' 9.274"	E 99° 27' 14.322"

		N 3° 4' 3.985"	E 99° 27' 0.314"
		N 3° 4' 7.457"	E 99° 27' 2.187"
		N 3° 3' 48.821"	E 99° 26' 42.731"
Juminah	Adil Makmur Village, Bosar Maligas Sub District, Simalungun District, Sumatera Utara Province, Indonesia	N 3° 4' 10.073"	E 99° 27' 6.790"
Kardi	Adil Makmur Village, Bosar Maligas Sub District, Simalungun District, Sumatera Utara Province, Indonesia	N 3° 3' 58.654"	E 99° 26' 54.241"
		N 3° 4' 25.673"	E 99° 26' 42.390"
Karnak	Adil Makmur Village, Bosar Maligas Sub District, Simalungun District, Sumatera Utara Province, Indonesia	N 3° 3' 44.065"	E 99° 26' 23.566"
Karnan	Adil Makmur Village, Bosar Maligas Sub District, Simalungun District, Sumatera Utara Province, Indonesia	N 3° 3' 42.256"	E 99° 26' 22.610"
Kerman	Adil Makmur Village, Bosar Maligas Sub District, Simalungun District, Sumatera Utara Province, Indonesia	N 3° 3' 54.462"	E 99° 26' 7.364"
		N 3° 3' 12.061"	E 99° 26' 6.346"
		N 3° 3' 41.946"	E 99° 26' 12.551"
		N 3° 3' 16.175"	E 99° 25' 32.206"
		N 3° 3' 5.968"	E 99° 25' 20.608"
		N 3° 3' 7.038"	E 99° 26' 5.866"
		N 3° 2' 53.958"	E 99° 25' 51.954"
		N 3° 4' 8.000"	E 99° 26' 48.801"
		N 3° 2' 59.248"	E 99° 25' 26.325"
		N 3° 3' 12.061"	E 99° 26' 6.346"
		N 3° 3' 1.600"	E 99° 25' 55.318"
		N 3° 3' 2.875"	E 99° 26' 0.235"
		N 3° 3' 9.249"	E 99° 25' 59.905"
		N 3° 3' 35.955"	E 99° 26' 6.914"
Khairul Anwar Siregar	Adil Makmur Village, Bosar Maligas Sub District, Simalungun District, Sumatera Utara Province, Indonesia	N 3° 4' 11.716"	E 99° 27' 17.674"
		N 3° 4' 10.589"	E 99° 27' 9.862"
		N 3° 4' 8.364"	E 99° 27' 8.608"
		N 3° 3' 33.469"	E 99° 25' 59.201"
		N 3° 3' 33.607"	E 99° 25' 57.393"
Kiran	Adil Makmur Village, Bosar Maligas Sub District, Simalungun District, Sumatera Utara Province, Indonesia	N 3° 4' 8.169"	E 99° 26' 38.817"
		N 3° 3' 42.512"	E 99° 26' 37.492"
Lamin	Adil Makmur Village, Bosar Maligas Sub District, Simalungun District, Sumatera Utara Province, Indonesia	N 3° 3' 41.042"	E 99° 26' 23.230"
		N 3° 3' 50.142"	E 99° 26' 26.587"
		N 3° 3' 29.606"	E 99° 25' 53.202"
		N 3° 3' 33.810"	E 99° 25' 56.441"
Lasiman	Adil Makmur Village, Bosar Maligas	N 3° 3' 14.008"	E 99° 25' 35.971"

		Sub District, Simalungun District, Sumatera Utara Province, Indonesia	N 3° 3' 24.042"	E 99° 25' 45.843"
			N 3° 3' 36.897"	E 99° 25' 30.490"
Legimin		Adil Makmur Village, Bosar Maligas Sub District, Simalungun District, Sumatera Utara Province, Indonesia	N 3° 4' 12.984"	E 99° 26' 44.984"
			N 3° 4' 5.963"	E 99° 26' 53.298"
Lukito		Adil Makmur Village, Bosar Maligas Sub District, Simalungun District, Sumatera Utara Province, Indonesia	N 3° 4' 23.675"	E 99° 26' 46.558"
M Syair		Adil Makmur Village, Bosar Maligas Sub District, Simalungun District, Sumatera Utara Province, Indonesia	N 3° 3' 53.818"	E 99° 26' 26.762"
			N 3° 3' 26.882"	E 99° 26' 20.403"
Manijo		Adil Makmur Village, Bosar Maligas Sub District, Simalungun District, Sumatera Utara Province, Indonesia	N 3° 3' 49.031"	E 99° 26' 45.657"
			N 3° 4' 12.629"	E 99° 26' 51.898"
Masri Tambun		Adil Makmur Village, Bosar Maligas Sub District, Simalungun District, Sumatera Utara Province, Indonesia	N 3° 4' 30.541"	E 99° 26' 14.721"
Misman		Adil Makmur Village, Bosar Maligas Sub District, Simalungun District, Sumatera Utara Province, Indonesia	N 3° 4' 1.121"	E 99° 26' 56.736"
Mudawar		Adil Makmur Village, Bosar Maligas Sub District, Simalungun District, Sumatera Utara Province, Indonesia	N 3° 3' 30.540"	E 99° 26' 29.167"
			N 3° 3' 23.970"	E 99° 26' 21.144"
			N 3° 3' 56.968"	E 99° 26' 24.436"
			N 3° 3' 40.062"	E 99° 26' 26.438"
			N 3° 3' 41.478"	E 99° 26' 18.895"
			N 3° 3' 37.456"	E 99° 26' 7.598"
			N 3° 3' 33.172"	E 99° 26' 18.853"
			N 3° 3' 28.870"	E 99° 26' 21.891"
			N 3° 3' 34.706"	E 99° 26' 21.621"
			N 3° 3' 32.856"	E 99° 26' 32.593"
			N 3° 3' 37.657"	E 99° 26' 31.297"
			N 3° 3' 42.947"	E 99° 26' 29.260"
			N 3° 2' 47.187"	E 99° 25' 36.473"
			N 3° 3' 54.531"	E 99° 26' 23.301"
			N 3° 4' 1.956"	E 99° 26' 21.016"
Nasip		Adil Makmur Village, Bosar Maligas Sub District, Simalungun District, Sumatera Utara Province, Indonesia	N 3° 3' 51.635"	E 99° 26' 25.567"
			N 3° 4' 10.620"	E 99° 26' 43.792"
			N 3° 4' 18.134"	E 99° 26' 34.564"
			N 3° 4' 21.294"	E 99° 26' 34.636"
Ngatino		Adil Makmur Village, Bosar Maligas Sub District, Simalungun District, Sumatera Utara Province, Indonesia	N 3° 4' 23.345"	E 99° 26' 39.818"
			N 3° 4' 18.394"	E 99° 26' 30.036"
			N 3° 4' 4.830"	E 99° 26' 17.968"
			N 3° 3' 38.995"	99° 26' 2.845"

Nurul Hakim	Adil Makmur Village, Bosar Maligas Sub District, Simalungun District, Sumatera Utara Province, Indonesia	N 3° 3' 43.805"	99° 26' 39.292"
Paidi A	Adil Makmur Village, Bosar Maligas Sub District, Simalungun District, Sumatera Utara Province, Indonesia	N 3° 3' 30.522"	E 99° 25' 56.249"
		N 3° 3' 41.975"	E 99° 26' 8.271"
		N 3° 3' 34.300"	E 99° 26' 19.968"
		N 3° 3' 25.801"	E 99° 26' 23.546"
		N 3° 3' 37.902"	E 99° 26' 32.460"
		N 3° 3' 40.832"	E 99° 26' 11.433"
Painem	Adil Makmur Village, Bosar Maligas Sub District, Simalungun District, Sumatera Utara Province, Indonesia	N 3° 4' 8.185"	E 99° 27' 12.006"
Paing	Adil Makmur Village, Bosar Maligas Sub District, Simalungun District, Sumatera Utara Province, Indonesia	N 3° 57' 26.082"	E 99° 24' 59.877"
Poniatik	Adil Makmur Village, Bosar Maligas Sub District, Simalungun District, Sumatera Utara Province, Indonesia	N 3° 4' 19.917"	E 99° 26' 32.138"
Ponimin	Adil Makmur Village, Bosar Maligas Sub District, Simalungun District, Sumatera Utara Province, Indonesia	N 3° 4' 7.461"	E 99° 26' 58.321"
		N 3° 3' 25.509"	E 99° 26' 18.379"
Rajali Sinaga	Adil Makmur Village, Bosar Maligas Sub District, Simalungun District, Sumatera Utara Province, Indonesia	N 3° 4' 14.948"	E 99° 26' 9.717"
Riadi	Adil Makmur Village, Bosar Maligas Sub District, Simalungun District, Sumatera Utara Province, Indonesia	N 3° 3' 54.885"	E 99° 26' 35.388"
		N 3° 4' 8.673"	E 99° 26' 36.641"
Ribut	Adil Makmur Village, Bosar Maligas Sub District, Simalungun District, Sumatera Utara Province, Indonesia	N 3° 1' 47.964"	E 99° 27' 24.821"
		N 3° 0' 57.759"	E 99° 26' 59.235"
		N 3° 0' 57.755"	E 99° 26' 55.876"
		N 3° 0' 55.619"	E 99° 26' 55.589"
		N 3° 0' 35.159"	E 99° 25' 43.474"
		N 3° 0' 33.237"	E 99° 25' 48.066"
		N 3° 0' 31.677"	E 99° 25' 43.871"
		N 3° 0' 32.563"	E 99° 25' 39.324"
		N 3° 0' 23.442"	E 99° 25' 33.890"
		N 3° 0' 20.074"	E 99° 25' 31.894"
		N 3° 0' 18.777"	E 99° 25' 35.690"
		N 3° 0' 21.380"	E 99° 25' 37.060"
Rini	Adil Makmur Village, Bosar Maligas Sub District, Simalungun District, Sumatera Utara Province, Indonesia	N 3° 4' 1.584"	E 99° 26' 35.870"
Rojiun	Adil Makmur Village, Bosar Maligas Sub District, Simalungun District, Sumatera Utara Province, Indonesia	N 3° 3' 57.863"	E 99° 26' 37.019"
		N 3° 4' 10.406"	E 99° 26' 53.269"
		N 3° 4' 12.197"	E 99° 26' 50.645"

		N 3° 4' 9.340"	E 99° 26' 49.436"
		N 3° 4' 3.887"	E 99° 26' 45.545"
		N 3° 4' 3.131"	E 99° 26' 35.027"
		N 3° 3' 59.445"	E 99° 26' 38.304"
		N 3° 4' 10.948"	E 99° 26' 37.511"
		N 3° 3' 46.872"	E 99° 26' 41.689"
		N 3° 3' 36.127"	E 99° 25' 37.705"
		N 3° 4' 17.865"	E 99° 26' 59.737"
Sabar Walgi	Adil Makmur Village, Bosar Maligas Sub District, Simalungun District, Sumatera Utara Province, Indonesia	N 3° 3' 49.749"	E 99° 26' 49.839"
		N 3° 3' 49.749"	E 99° 26' 49.839"
		N 3° 3' 49.749"	E 99° 26' 49.839"
Sabarianto	Adil Makmur Village, Bosar Maligas Sub District, Simalungun District, Sumatera Utara Province, Indonesia	N 3° 3' 8.537"	E 99° 25' 51.168"
Sagiyem	Adil Makmur Village, Bosar Maligas Sub District, Simalungun District, Sumatera Utara Province, Indonesia	N 3° 3' 49.238"	E 99° 26' 45.155"
Saiman	Adil Makmur Village, Bosar Maligas Sub District, Simalungun District, Sumatera Utara Province, Indonesia	N 3° 4' 17.189"	E 99° 26' 33.852"
Salim	Adil Makmur Village, Bosar Maligas Sub District, Simalungun District, Sumatera Utara Province, Indonesia	N 3° 5' 25.784"	E 99° 24' 7.444"
Samiran	Adil Makmur Village, Bosar Maligas Sub District, Simalungun District, Sumatera Utara Province, Indonesia	N 3° 3' 24.875"	E 99° 25' 6.925"
Saparimin	Adil Makmur Village, Bosar Maligas Sub District, Simalungun District, Sumatera Utara Province, Indonesia	N 3° 4' 13.654"	E 99° 27' 11.376"
		N 3° 3' 28.857"	E 99° 26' 27.640"
		N 3° 4' 15.821"	E 99° 26' 13.649"
Sarian	Adil Makmur Village, Bosar Maligas Sub District, Simalungun District, Sumatera Utara Province, Indonesia	N 3° 4' 2.448"	E 99° 25' 58.688"
Sariato	Adil Makmur Village, Bosar Maligas Sub District, Simalungun District, Sumatera Utara Province, Indonesia	N 3° 2' 49.303"	E 99° 25' 28.577"
		N 3° 2' 42.049"	E 99° 25' 30.189"
		N 3° 2' 41.105"	E 99° 25' 37.942"
Sawiyen	Adil Makmur Village, Bosar Maligas Sub District, Simalungun District, Sumatera Utara Province, Indonesia	N 3° 3' 22.028"	E 99° 25' 12.999"
Selamat	Adil Makmur Village, Bosar Maligas Sub District, Simalungun District, Sumatera Utara Province, Indonesia	N 2° 56' 58.151"	E 99° 25' 3.973"
Sudarman	Adil Makmur Village, Bosar Maligas Sub District, Simalungun District, Sumatera Utara Province, Indonesia	N 3° 3' 3.064"	E 99° 25' 49.167"
Suhelman Sitepu	Adil Makmur Village, Bosar Maligas Sub District, Simalungun District, Sumatera	N 3° 3' 52.168"	E 99° 26' 35.527"
		N 3° 4' 0.129"	E 99° 26' 18.390"

	Utara Province, Indonesia	N 3° 4' 1.962"	E 99° 26' 17.983"
		N 3° 4' 4.790"	E 99° 26' 15.611"
		N 3° 4' 4.575"	E 99° 26' 13.349"
		N 3° 4' 7.616"	E 99° 26' 20.042"
Suhid	Adil Makmur Village, Bosar Maligas Sub District, Simalungun District, Sumatera Utara Province, Indonesia	N 3° 3' 57.462"	E 99° 25' 56.053"
		N 3° 3' 52.995"	E 99° 26' 0.241"
Sukarles Siregar	Adil Makmur Village, Bosar Maligas Sub District, Simalungun District, Sumatera Utara Province, Indonesia	N 3° 4' 18.186"	E 99° 26' 33.028"
Sukirman	Adil Makmur Village, Bosar Maligas Sub District, Simalungun District, Sumatera Utara Province, Indonesia	N 3° 4' 3.223"	E 99° 26' 55.567"
Sulastri	Adil Makmur Village, Bosar Maligas Sub District, Simalungun District, Sumatera Utara Province, Indonesia	N 3° 3' 44.840"	E 99° 26' 35.239"
Sumarno S	Adil Makmur Village, Bosar Maligas Sub District, Simalungun District, Sumatera Utara Province, Indonesia	N 3° 4' 20.337"	E 99° 26' 47.225"
Supriadi Huta	Adil Makmur Village, Bosar Maligas Sub District, Simalungun District, Sumatera Utara Province, Indonesia	N 3° 4' 13.068"	E 99° 27' 12.326"
		N 3° 3' 35.738"	E 99° 26' 34.132"
Suparmin	Adil Makmur Village, Bosar Maligas Sub District, Simalungun District, Sumatera Utara Province, Indonesia	N 3° 4' 21.016"	E 99° 26' 49.580"
Supiono	Adil Makmur Village, Bosar Maligas Sub District, Simalungun District, Sumatera Utara Province, Indonesia	N 3° 3' 48.152"	E 99° 25' 55.263"
		N 3° 3' 42.610"	E 99° 25' 54.478"
Supriadi	Adil Makmur Village, Bosar Maligas Sub District, Simalungun District, Sumatera Utara Province, Indonesia	N 3° 3' 22.344"	E 99° 25' 46.840"
Supriani	Adil Makmur Village, Bosar Maligas Sub District, Simalungun District, Sumatera Utara Province, Indonesia	N 3° 5' 23.379"	E 99° 23' 29.399"
		N 3° 5' 23.379"	E 99° 23' 29.399"
Suratman	Adil Makmur Village, Bosar Maligas Sub District, Simalungun District, Sumatera Utara Province, Indonesia	N 3° 4' 4.664"	E 99° 27' 10.404"
		N 3° 3' 40.073"	E 99° 26' 34.053"
		N 3° 3' 35.358"	E 99° 26' 35.713"
Surep	Adil Makmur Village, Bosar Maligas Sub District, Simalungun District, Sumatera Utara Province, Indonesia	N 3° 3' 31.481"	E 99° 26' 24.771"
		N 3° 3' 37.605"	E 99° 26' 20.190"
		N 3° 4' 6.079"	E 99° 26' 39.862"
Superno	Adil Makmur Village, Bosar Maligas Sub District, Simalungun District, Sumatera Utara Province, Indonesia	N 3° 4' 22.575"	E 99° 26' 42.435"
		N 3° 4' 17.747"	E 99° 26' 47.291"
Suryadi	Adil Makmur Village, Bosar Maligas Sub District, Simalungun District, Sumatera Utara Province, Indonesia	N 3° 3' 48.789"	E 99° 26' 48.660"
		N 3° 3' 36.653"	E 99° 26' 29.475"
		N 3° 3' 36.859"	E 99° 26' 30.475"
		N 3° 3' 32.405"	E 99° 26' 27.453"
		N 3° 4' 1.040"	E 99° 26' 48.154"

		N 3° 4' 19.461"	E 99° 26' 36.429"
		N 3° 3' 44.215"	E 99° 26' 14.506"
		N 3° 3' 38.585"	E 99° 26' 22.253"
		N 3° 3' 32.215"	E 99° 26' 25.926"
		N 3° 3' 35.086"	E 99° 26' 26.142"
Suwarno	Adil Makmur Village, Bosar Maligas Sub District, Simalungun District, Sumatera Utara Province, Indonesia	N 3° 4' 4.486"	E 99° 26' 10.869"
Takrif	Adil Makmur Village, Bosar Maligas Sub District, Simalungun District, Sumatera Utara Province, Indonesia	N 3° 4' 11.573"	E 99° 26' 33.286"
		N 3° 4' 17.471"	E 99° 26' 40.193"
Tirto Suwito	Adil Makmur Village, Bosar Maligas Sub District, Simalungun District, Sumatera Utara Province, Indonesia	N 3° 4' 13.562"	E 99° 26' 53.143"
Tukiran	Adil Makmur Village, Bosar Maligas Sub District, Simalungun District, Sumatera Utara Province, Indonesia	N 3° 4' 17.008"	E 99° 26' 43.270"
Tukiyo	Adil Makmur Village, Bosar Maligas Sub District, Simalungun District, Sumatera Utara Province, Indonesia	N 3° 3' 55.815"	E 99° 26' 37.427"
Tursimin	Adil Makmur Village, Bosar Maligas Sub District, Simalungun District, Sumatera Utara Province, Indonesia	N 3° 4' 2.419"	E 99° 26' 46.080"
Tutur	Adil Makmur Village, Bosar Maligas Sub District, Simalungun District, Sumatera Utara Province, Indonesia	N 3° 4' 0.857"	E 99° 26' 53.810"
Waginem	Adil Makmur Village, Bosar Maligas Sub District, Simalungun District, Sumatera Utara Province, Indonesia	N 3° 4' 2.044"	E 99° 27' 0.185"
		N 3° 4' 3.647"	E 99° 26' 57.232"
		N 3° 4' 4.496"	E 99° 27' 7.056"
Warsito	Adil Makmur Village, Bosar Maligas Sub District, Simalungun District, Sumatera Utara Province, Indonesia	N 3° 4' 12.359"	E 99° 27' 0.752"
Windari	Adil Makmur Village, Bosar Maligas Sub District, Simalungun District, Sumatera Utara Province, Indonesia	N 3° 4' 19.033"	E 99° 26' 43.969"
Yatmo	Adil Makmur Village, Bosar Maligas Sub District, Simalungun District, Sumatera Utara Province, Indonesia	N 3° 3' 42.816"	E 99° 26' 4.819"
Zainal Arifin Siregar	Adil Makmur Village, Bosar Maligas Sub District, Simalungun District, Sumatera Utara Province, Indonesia	N 3° 3' 37.588"	E 99° 26' 36.429"
		N 3° 4' 6.036"	E 99° 26' 48.939"
		N 3° 3' 24.461"	E 99° 26' 5.274"
		N 3° 3' 28.647"	E 99° 26' 0.650"
Jimahata Siagian	Lingkungan Gunung Perak Village, Bosar Maligas Sub District, Simalungun District, Sumatera Utara Province, Indonesia	N 3° 5' 16.484"	E 99° 24' 44.912"
Munah	Lingkungan Gunung Perak Village, Bosar Maligas Sub District, Simalungun District, Sumatera Utara Province, Indonesia	N 3° 5' 17.803"	E 99° 24' 46.842"
Rusdi	Lingkungan Gunung Perak Village, Bosar	N 3° 5' 52.580"	E 99° 25' 0.182"

	Maligas Sub District, Simalungun District, Sumatera Utara Province, Indonesia	N 3° 5' 59.651"	E 99° 24' 54.685"
		N 3° 5' 55.001"	E 99° 24' 49.697"
		N 3° 5' 48.281"	E 99° 25' 0.022"
Wahab Makmur Situmorang	Lingkungan Gunung Perak Village, Bosar Maligas Sub District, Simalungun District, Sumatera Utara Province, Indonesia	N 3° 5' 55.649"	E 99° 24' 55.283"
		N 3° 5' 56.234"	E 99° 24' 52.111"
Ade Prastiono Situmorang	Lingkungan 01 Tengah Village, Bosar Maligas Sub District, Simalungun District, Sumatera Utara Province, Indonesia	N 3° 5' 25.933"	E 99° 23' 21.262"
Adi Retno	Lingkungan 01 Tengah Village, Bosar Maligas Sub District, Simalungun District, Sumatera Utara Province, Indonesia	N 3° 5' 29.971"	E 99° 23' 29.744"
Ahmad Safri	Lingkungan 01 Tengah Village, Bosar Maligas Sub District, Simalungun District, Sumatera Utara Province, Indonesia	N 3° 5' 23.769"	E 99° 23' 33.975"
Ali Usman	Lingkungan 01 Tengah Village, Bosar Maligas Sub District, Simalungun District, Sumatera Utara Province, Indonesia	N 3° 5' 25.228"	E 99° 23' 36.480"
Amer Amandus Sijabat	Lingkungan 01 Tengah Village, Bosar Maligas Sub District, Simalungun District, Sumatera Utara Province, Indonesia	N 3° 3' 24.390"	E 99° 25' 19.504"
Darimun	Lingkungan 01 Tengah Village, Bosar Maligas Sub District, Simalungun District, Sumatera Utara Province, Indonesia	N 3° 5' 6.358"	E 99° 23' 32.362"
		N 3° 5' 32.290"	E 99° 23' 28.344"
Eko Joko Syaputro	Lingkungan 01 Tengah Village, Bosar Maligas Sub District, Simalungun District, Sumatera Utara Province, Indonesia	N 3° 5' 33.796"	E 99° 23' 26.088"
Heri Irwansyah	Lingkungan 01 Tengah Village, Bosar Maligas Sub District, Simalungun District, Sumatera Utara Province, Indonesia	N 3° 12' 10.006"	E 99° 16' 22.390"
Jonar	Lingkungan 01 Tengah Village, Bosar Maligas Sub District, Simalungun District, Sumatera Utara Province, Indonesia	N 3° 14' 9.337"	E 99° 16' 54.626"
		N 3° 14' 3.998"	E 99° 17' 4.989"
		N 3° 14' 0.223"	E 99° 17' 6.223"
		N 3° 14' 6.119"	E 99° 16' 43.872"
Juliandi Situmorang	Lingkungan 01 Tengah Village, Bosar Maligas Sub District, Simalungun District, Sumatera Utara Province, Indonesia	N 3° 5' 27.111"	E 99° 23' 22.896"
Kamaludin	Lingkungan 01 Tengah Village, Bosar Maligas Sub District, Simalungun District, Sumatera Utara Province, Indonesia	N 3° 13' 14.575"	E 99° 16' 52.886"
		N 3° 13' 10.790"	E 99° 16' 53.348"
		N 3° 14' 7.197"	E 99° 16' 53.394"
		N 3° 5' 25.601"	E 99° 22' 41.393"
Kasirin	Lingkungan 01 Tengah Village, Bosar Maligas Sub District, Simalungun District, Sumatera Utara Province, Indonesia	N 3° 5' 26.017"	E 99° 23' 32.112"
Mijiter	Lingkungan 01 Tengah Village, Bosar Maligas Sub District, Simalungun District, Sumatera Utara Province, Indonesia	N 3° 5' 23.797"	E 99° 23' 27.963"
Muhammad Nur Efendi	Lingkungan 01 Tengah Village, Bosar Maligas Sub District, Simalungun District, Sumatera Utara Province, Indonesia	N 3° 14' 7.262"	E 99° 17' 18.872"

Muhammad Parlin Purba	Lingkungan 01 Tengah Village, Bosar Maligas Sub District, Simalungun District, Sumatera Utara Province, Indonesia	N 3° 5' 57.288"	E 99° 24' 49.343"
Paino	Lingkungan 01 Tengah Village, Bosar Maligas Sub District, Simalungun District, Sumatera Utara Province, Indonesia	N 3° 5' 32.233"	E 99° 23' 25.391"
Rahmad Efendi	Lingkungan 01 Tengah Village, Bosar Maligas Sub District, Simalungun District, Sumatera Utara Province, Indonesia	N 3° 13' 12.789"	E 99° 16' 50.340"
Sariaman Sinaga	Lingkungan 01 Tengah Village, Bosar Maligas Sub District, Simalungun District, Sumatera Utara Province, Indonesia	N 3° 8' 2.398"	E 99° 24' 41.558"
Sri Kiswanto	Lingkungan 01 Tengah Village, Bosar Maligas Sub District, Simalungun District, Sumatera Utara Province, Indonesia	N 3° 5' 27.838"	E 99° 24' 19.516"
		N 3° 5' 32.084"	E 99° 24' 17.003"
		N 3° 5' 16.006"	E 99° 24' 3.362"
Sri Ningsih	Lingkungan 01 Tengah Village, Bosar Maligas Sub District, Simalungun District, Sumatera Utara Province, Indonesia	N 3° 14' 6.312"	E 99° 16' 41.611"
Sunarti	Lingkungan 01 Tengah Village, Bosar Maligas Sub District, Simalungun District, Sumatera Utara Province, Indonesia	N 3° 5' 23.397"	E 99° 23' 30.485"
Tukimin	Lingkungan 01 Tengah Village, Bosar Maligas Sub District, Simalungun District, Sumatera Utara Province, Indonesia	N 3° 5' 25.802"	E 99° 23' 23.837"
Usman	Lingkungan 01 Tengah Village, Bosar Maligas Sub District, Simalungun District, Sumatera Utara Province, Indonesia	N 3° 5' 26.464"	E 99° 23' 34.620"
Achmad Nalenta Sinaga	Lingkungan Kulon Village, Bosar Maligas Sub District, Simalungun District, Sumatera Utara Province, Indonesia	N 3° 5' 10.703"	E 99° 23' 2.008"
		N 3° 5' 22.113"	E 99° 22' 56.474"
Boimin	Lingkungan Kulon Village, Bosar Maligas Sub District, Simalungun District, Sumatera Utara Province, Indonesia	N 3° 5' 12.965"	E 99° 22' 43.639"
		N 3° 5' 28.800"	E 99° 22' 52.867"
Budiono Damanik	Pengkolan Village, Bosar Maligas Sub District, Simalungun District, Sumatera Utara Province, Indonesia	N 3° 2' 25.697"	E 99° 23' 19.858"
Cahaya sinaga	Lingkungan Kulon Village, Bosar Maligas Sub District, Simalungun District, Sumatera Utara Province, Indonesia	N 3° 5' 10.805"	E 99° 22' 58.854"
Hermanto	Lingkungan Kulon Village, Bosar Maligas Sub District, Simalungun District, Sumatera Utara Province, Indonesia	N 3° 5' 21.454"	E 99° 23' 9.115"
Jasmin	Lingkungan Kulon Village, Bosar Maligas Sub District, Simalungun District, Sumatera Utara Province, Indonesia	N 3° 5' 25.817"	E 99° 22' 42.680"
Kasmen	Lingkungan Kulon Village, Bosar Maligas Sub District, Simalungun District, Sumatera Utara Province, Indonesia	N 3° 5' 11.827"	E 99° 22' 43.089"
		N 3° 3' 42.512"	E 99° 26' 37.492"
		N 3° 2' 46.216"	E 99° 25' 30.831"
		N 3° 5' 11.290"	E 99° 22' 45.850"
Ngatiman	Lingkungan Kulon Village, Bosar Maligas Sub District, Simalungun District, Sumatera Utara Province, Indonesia	N 3° 5' 24.130"	E 99° 22' 50.720"
		N 3° 5' 23.795"	E 99° 22' 43.721"

Paiman T	Lingkungan Kulon Village, Bosar Maligas Sub District, Simalungun District, Sumatera Utara Province, Indonesia	N 3° 5' 16.947"	E 99° 22' 51.268"
Parno	Lingkungan Kulon Village, Bosar Maligas Sub District, Simalungun District, Sumatera Utara Province, Indonesia	N 3° 5' 15.195"	E 99° 22' 42.652"
Puja Saputra	Lingkungan Kulon Village, Bosar Maligas Sub District, Simalungun District, Sumatera Utara Province, Indonesia	N 3° 5' 25.674"	E 99° 23' 1.264"
Riaman	Lingkungan Kulon Village, Bosar Maligas Sub District, Simalungun District, Sumatera Utara Province, Indonesia	N 3° 5' 2.831"	E 99° 23' 0.331"
Sakiran Sinaga	Lingkungan Kulon Village, Bosar Maligas Sub District, Simalungun District, Sumatera Utara Province, Indonesia	N 3° 5' 24.262"	E 99° 22' 59.380"
		N 3° 5' 27.466"	E 99° 23' 7.202"
Sipon	Lingkungan Kulon Village, Bosar Maligas Sub District, Simalungun District, Sumatera Utara Province, Indonesia	N 3° 5' 26.498"	E 99° 22' 40.624"
Sriyatno	Lingkungan Kulon Village, Bosar Maligas Sub District, Simalungun District, Sumatera Utara Province, Indonesia	N 3° 5' 19.946"	E 99° 22' 56.380"
		N 3° 5' 14.861"	E 99° 23' 2.890"
		N 3° 5' 8.377"	E 99° 23' 1.673"
Sutarno	Lingkungan Kulon Village, Bosar Maligas Sub District, Simalungun District, Sumatera Utara Province, Indonesia	N 2° 57' 55.507"	E 99° 24' 53.758"
Tunut	Lingkungan Kulon Village, Bosar Maligas Sub District, Simalungun District, Sumatera Utara Province, Indonesia	N 3° 5' 19.773"	E 99° 22' 40.888"
Yusminarno	Lingkungan Kulon Village, Bosar Maligas Sub District, Simalungun District, Sumatera Utara Province, Indonesia	N 3° 5' 9.956"	E 99° 23' 4.450"
Gunawan Pasaribu	Lingkungan Rendahan Village, Bosar Maligas Sub District, Simalungun District, Sumatera Utara Province, Indonesia	N 3° 5' 20.569"	E 99° 23' 46.117"
		N 3° 5' 16.817"	E 99° 24' 5.717"
Heru Ardianto	Lingkungan Rendahan Village, Bosar Maligas Sub District, Simalungun District, Sumatera Utara Province, Indonesia	N 3° 5' 23.835"	E 99° 24' 38.135"
		N 3° 5' 10.511"	E 99° 24' 26.006"
		N 3° 5' 12.359"	E 99° 24' 12.855"
Akad Sitorus	Lingkungan Teratak Village, Bosar Maligas Sub District, Simalungun District, Sumatera Utara Province, Indonesia	N 3° 5' 21.339"	E 99° 24' 8.011"
		N 3° 5' 48.309"	E 99° 24' 22.017"
		N 3° 5' 29.380"	E 99° 24' 17.392"
		N 3° 5' 31.015"	E 99° 24' 20.446"
Ali Sarpati Sinaga	Lingkungan Teratak Village, Bosar Maligas Sub District, Simalungun District, Sumatera Utara Province, Indonesia	N 3° 5' 13.216"	E 99° 23' 3.745"
		N 3° 5' 13.716"	E 99° 22' 59.795"
		N 3° 5' 49.027"	E 99° 24' 19.878"
		N 3° 5' 44.808"	E 99° 24' 21.907"
		N 3° 5' 43.774"	E 99° 24' 12.057"
Henny	Lingkungan Teratak Village, Bosar Maligas Sub District, Simalungun District, Sumatera Utara Province, Indonesia	N 3° 6' 6.485"	E 99° 24' 34.012"

M Kamilan	Lingkungan Teratak Village, Bosar Maligas Sub District, Simalungun District, Sumatera Utara Province, Indonesia	N 3° 5' 27.947"	E 99° 23' 50.835"
		N 3° 5' 25.268"	E 99° 24' 13.156"
		N 3° 5' 25.268"	E 99° 24' 13.156"
Mardiana	Lingkungan Teratak Village, Bosar Maligas Sub District, Simalungun District, Sumatera Utara Province, Indonesia	N 3° 5' 47.891"	E 99° 24' 14.221"
Muhammad Alfhissha Sinaga	Lingkungan Teratak Village, Bosar Maligas Sub District, Simalungun District, Sumatera Utara Province, Indonesia	N 3° 5' 13.705"	E 99° 22' 57.772"
Nano	Lingkungan Teratak Village, Bosar Maligas Sub District, Simalungun District, Sumatera Utara Province, Indonesia	N 3° 5' 31.236"	E 99° 23' 55.458"
Ngademan	Lingkungan Teratak Village, Bosar Maligas Sub District, Simalungun District, Sumatera Utara Province, Indonesia	N 3° 5' 28.009"	E 99° 24' 9.485"
		N 3° 5' 28.703"	E 99° 24' 13.351"
Resman Purba	Lingkungan Teratak Village, Bosar Maligas Sub District, Simalungun District, Sumatera Utara Province, Indonesia	N 3° 5' 40.952"	E 99° 24' 4.829"
Supriadi	Lingkungan Teratak Village, Bosar Maligas Sub District, Simalungun District, Sumatera Utara Province, Indonesia	N 3° 5' 31.682"	E 99° 24' 4.068"
		N 3° 3' 40.938"	E 99° 26' 16.561"
		N 3° 3' 44.094"	E 99° 26' 10.720"
Suratmin	Lingkungan Teratak Village, Bosar Maligas Sub District, Simalungun District, Sumatera Utara Province, Indonesia	N 3° 5' 25.475"	E 99° 24' 2.652"
Suratno	Lingkungan Teratak Village, Bosar Maligas Sub District, Simalungun District, Sumatera Utara Province, Indonesia	N 3° 5' 29.763"	E 99° 24' 2.273"
Wagino W.	Lingkungan Teratak Village, Bosar Maligas Sub District, Simalungun District, Sumatera Utara Province, Indonesia	N 2° 57' 7.661"	E 99° 24' 36.384"
		N 2° 56' 55.524"	E 99° 24' 35.173"
B. Sirait	Pengkolan Village, Bosar Maligas Sub District, Simalungun District, Sumatera Utara Province, Indonesia	N 3° 1' 36.152"	E 99° 23' 3.861"
Berliana Br. Damanik	Pengkolan Village, Bosar Maligas Sub District, Simalungun District, Sumatera Utara Province, Indonesia	N 3° 2' 11.333"	E 99° 23' 33.283"
		N 3° 2' 11.333"	E 99° 23' 33.283"
Darman	Pengkolan Village, Bosar Maligas Sub District, Simalungun District, Sumatera Utara Province, Indonesia	N 3° 3' 35.766"	E 99° 24' 52.460"
		N 3° 3' 33.058"	E 99° 24' 54.028"
		N 3° 3' 33.058"	E 99° 24' 54.028"
Delima Manurung	Pengkolan Village, Bosar Maligas Sub District, Simalungun District, Sumatera Utara Province, Indonesia	N 3° 2' 28.823"	E 99° 23' 36.177"
Elvina Manurung	Pengkolan Village, Bosar Maligas Sub District, Simalungun District, Sumatera Utara Province, Indonesia	N 3° 1' 35.409"	E 99° 23' 13.825"
		N 3° 1' 35.409"	E 99° 23' 13.825"
Hendra Situmorang	Pengkolan Village, Bosar Maligas Sub District, Simalungun District, Sumatera Utara Province, Indonesia	N 3° 2' 18.891"	E 99° 23' 22.222"
Hendra Wahyudi	Pengkolan Village, Bosar Maligas Sub District, Simalungun District, Sumatera	N 3° 4' 11.628"	E 99° 25' 10.013"
		N 3° 3' 55.568"	E 99° 25' 4.103"

	Utara Province, Indonesia	N 3° 3' 42.206"	E 99° 25' 1.653"
		N 3° 3' 1.075"	E 99° 24' 46.561"
Hotman Damanik	Pengkolan Village, Bosar Maligas Sub District, Simalungun District, Sumatera Utara Province, Indonesia	N 3° 1' 52.290"	E 99° 23' 11.761"
		N 3° 2' 25.120"	E 99° 23' 30.729"
		N 3° 2' 25.120"	E 99° 23' 30.729"
Irwansyah	Pengkolan Village, Bosar Maligas Sub District, Simalungun District, Sumatera Utara Province, Indonesia	N 3° 2' 16.605"	E 99° 23' 31.619"
Jamel Hutabalan	Pengkolan Village, Bosar Maligas Sub District, Simalungun District, Sumatera Utara Province, Indonesia	N 3° 1' 36.679"	E 99° 23' 17.519"
Jamroni	Pengkolan Village, Bosar Maligas Sub District, Simalungun District, Sumatera Utara Province, Indonesia	N 3° 3' 40.032"	E 99° 24' 58.444"
Julpri Sialagan	Pengkolan Village, Bosar Maligas Sub District, Simalungun District, Sumatera Utara Province, Indonesia	N 3° 1' 40.063"	E 99° 23' 8.087"
Junaidi	Pengkolan Village, Bosar Maligas Sub District, Simalungun District, Sumatera Utara Province, Indonesia	N 3° 3' 28.443"	E 99° 24' 56.338"
		N 3° 3' 40.878"	E 99° 25' 27.989"
		N 3° 3' 48.048"	E 99° 25' 22.681"
Kisruk Wibowo	Pengkolan Village, Bosar Maligas Sub District, Simalungun District, Sumatera Utara Province, Indonesia	N 3° 3' 36.277"	E 99° 24' 55.646"
		N 3° 3' 31.385"	E 99° 24' 55.108"
		N 3° 3' 31.539"	E 99° 25' 1.146"
		N 3° 3' 18.743"	E 99° 24' 49.788"
		N 3° 3' 3.929"	E 99° 24' 52.296"
		N 3° 3' 43.059"	E 99° 24' 50.302"
		N 3° 3' 26.714"	E 99° 25' 7.552"
Lianto Simbolon	Pengkolan Village, Bosar Maligas Sub District, Simalungun District, Sumatera Utara Province, Indonesia	N 3° 2' 22.585"	E 99° 23' 26.972"
Maruli Ambarita	Pengkolan Village, Bosar Maligas Sub District, Simalungun District, Sumatera Utara Province, Indonesia	N 3° 1' 43.950"	E 99° 22' 58.729"
Masniar Siburian	Pengkolan Village, Bosar Maligas Sub District, Simalungun District, Sumatera Utara Province, Indonesia	N 3° 1' 33.709"	E 99° 23' 4.185"
		N 3° 1' 32.830"	E 99° 23' 16.168"
Minton Manurung	Pengkolan Village, Bosar Maligas Sub District, Simalungun District, Sumatera Utara Province, Indonesia	N 3° 1' 45.457"	E 99° 23' 14.986"
		N 3° 1' 44.714"	E 99° 23' 20.728"
Monang Damanik	Pengkolan Village, Bosar Maligas Sub District, Simalungun District, Sumatera Utara Province, Indonesia	N 3° 2' 27.922"	E 99° 23' 26.427"
Nasem	Pengkolan Village, Bosar Maligas Sub District, Simalungun District, Sumatera Utara Province, Indonesia	N 3° 3' 25.332"	E 99° 25' 3.239"
		N 3° 3' 31.006"	E 99° 25' 6.696"
		N 3° 3' 45.329"	E 99° 25' 8.863"
		N 3° 3' 54.850"	E 99° 25' 5.228"

Pardi Sirait	Pengkolan Village, Bosar Maligas Sub District, Simalungun District, Sumatera Utara Province, Indonesia	N 3° 1' 51.166"	E 99° 23' 3.560"
Ponimah Manurung	Pengkolan Village, Bosar Maligas Sub District, Simalungun District, Sumatera Utara Province, Indonesia	N 3° 2' 31.586"	E 99° 23' 44.651"
		N 3° 2' 36.342"	E 99° 23' 38.106"
Rianto Ambarita	Pengkolan Village, Bosar Maligas Sub District, Simalungun District, Sumatera Utara Province, Indonesia	N 3° 1' 50.464"	E 99° 23' 7.250"
Rohamin Sinaga	Pengkolan Village, Bosar Maligas Sub District, Simalungun District, Sumatera Utara Province, Indonesia	N 3° 5' 8.599"	E 99° 22' 41.339"
Saidi Sinaga	Pengkolan Village, Bosar Maligas Sub District, Simalungun District, Sumatera Utara Province, Indonesia	N 3° 1' 35.553"	E 99° 22' 51.540"
Solihin	Pengkolan Village, Bosar Maligas Sub District, Simalungun District, Sumatera Utara Province, Indonesia	N 2° 58' 7.908"	E 99° 24' 47.506"
		N 2° 58' 7.908"	E 99° 24' 47.506"
		N 2° 58' 20.251"	E 99° 24' 55.249"
Sri Elisa	Pengkolan Village, Bosar Maligas Sub District, Simalungun District, Sumatera Utara Province, Indonesia	N 2° 58' 0.205"	E 99° 24' 51.692"
		N 3° 3' 36.307"	E 99° 24' 45.337"
		N 3° 3' 25.035"	E 99° 24' 53.508"
Sugiar	Pengkolan Village, Bosar Maligas Sub District, Simalungun District, Sumatera Utara Province, Indonesia	N 3° 3' 5.337"	E 99° 24' 52.536"
		N 3° 3' 10.276"	E 99° 24' 45.196"
		N 3° 3' 29.998"	E 99° 24' 47.360"
Sunardi	Pengkolan Village, Bosar Maligas Sub District, Simalungun District, Sumatera Utara Province, Indonesia	N 3° 3' 32.142"	E 99° 24' 51.692"
		N 3° 3' 36.063"	E 99° 24' 43.158"
Tunggak	Pengkolan Village, Bosar Maligas Sub District, Simalungun District, Sumatera Utara Province, Indonesia	N 3° 2' 14.934"	E 99° 23' 36.114"
		N 3° 3' 37.443"	E 99° 24' 48.077"
Zulkifli Manurung	Pengkolan Village, Bosar Maligas Sub District, Simalungun District, Sumatera Utara Province, Indonesia	N 3° 3' 27.558"	E 99° 24' 46.858"
Temu	Pengkolan Village, Bosar Maligas Sub District, Simalungun District, Sumatera Utara Province, Indonesia	N 3° 1' 49.490"	E 99° 24' 46.694"
		N 3° 3' 15.881"	E 99° 23' 15.127"
		N 3° 3' 15.881"	E 99° 24' 46.694"
Sadikun	Pengkolan Village, Bosar Maligas Sub District, Simalungun District, Sumatera Utara Province, Indonesia	N 3° 3' 15.881"	E 99° 24' 46.694"
Sunardi	Pengkolan Village, Bosar Maligas Sub District, Simalungun District, Sumatera Utara Province, Indonesia	N 3° 3' 28.141"	E 99° 24' 42.292"
Selamat Handoko	Pengkolan Village, Bosar Maligas Sub District, Simalungun District, Sumatera Utara Province, Indonesia	N 3° 3' 59.121"	E 99° 26' 49.699"
Sapar	Pengkolan Village, Bosar Maligas Sub District, Simalungun District, Sumatera Utara Province, Indonesia	N 3° 3' 59.121"	E 99° 26' 49.699"
		N 3° 3' 29.216"	E 99° 24' 48.609"
		N 3° 3' 39.963"	E 99° 24' 48.139"

Ade Setiawan	Pengkolan Village, Bosar Maligas Sub District, Simalungun District, Sumatera Utara Province, Indonesia	N 2° 58' 2.655"	E 99° 24' 44.966"
Ahmad Rifai Sarumpaet	Pengkolan Village, Bosar Maligas Sub District, Simalungun District, Sumatera Utara Province, Indonesia	N 2° 56' 33.812"	E 99° 24' 7.358"
Amirudin	Pengkolan Village, Bosar Maligas Sub District, Simalungun District, Sumatera Utara Province, Indonesia	N 2° 57' 55.888"	E 99° 24' 14.354"
		N 2° 58' 7.082"	E 99° 24' 27.754"
Amran Sinaga	Pengkolan Village, Bosar Maligas Sub District, Simalungun District, Sumatera Utara Province, Indonesia	N 2° 57' 7.692"	E 99° 24' 27.017"
Anum Sitorus	Pengkolan Village, Bosar Maligas Sub District, Simalungun District, Sumatera Utara Province, Indonesia	N 2° 58' 14.912"	E 99° 24' 27.366"
Azhar	Pengkolan Village, Bosar Maligas Sub District, Simalungun District, Sumatera Utara Province, Indonesia	N 2° 58' 8.415"	E 99° 24' 53.409"
		N 2° 57' 36.923"	E 99° 25' 0.604"
		N 2° 57' 23.815"	E 99° 25' 2.242"
		N 2° 57' 35.562"	E 99° 25' 19.002"
Azis Sinaga	Pengkolan Village, Bosar Maligas Sub District, Simalungun District, Sumatera Utara Province, Indonesia	N 2° 57' 40.407"	E 99° 24' 1.486"
		N 2° 57' 56.329"	E 99° 24' 6.483"
Boimen	Pengkolan Village, Bosar Maligas Sub District, Simalungun District, Sumatera Utara Province, Indonesia	N 2° 56' 56.177"	E 99° 24' 50.499"
		N 2° 56' 56.177"	E 99° 24' 50.499"
		N 2° 56' 51.645"	E 99° 24' 24.256"
Dumoli Simanjuntak	Pengkolan Village, Bosar Maligas Sub District, Simalungun District, Sumatera Utara Province, Indonesia	N 2° 57' 47.085"	E 99° 24' 37.803"
		N 2° 57' 47.085"	E 99° 24' 37.803"
Efendi Saragih	Sei Torop Village, Bosar Maligas Sub District, Simalungun District, Sumatera Utara Province, Indonesia	N 2° 57' 14.836"	E 99° 24' 27.035"
Gunawan	Sei Torop Village, Bosar Maligas Sub District, Simalungun District, Sumatera Utara Province, Indonesia	N 2° 57' 41.959"	E 99° 24' 58.047"
Herman	Sei Torop Village, Bosar Maligas Sub District, Simalungun District, Sumatera Utara Province, Indonesia	N 3° 3' 3.47,523"	E 99° 26' 21.574"
Jumiran	Sei Torop Village, Bosar Maligas Sub District, Simalungun District, Sumatera Utara Province, Indonesia	N 2° 57' 3.759"	E 99° 24' 21.958"
Kamidi	Sei Torop Village, Bosar Maligas Sub District, Simalungun District, Sumatera Utara Province, Indonesia	N 2° 58' 14.215"	E 99° 24' 5.016"
		N 2° 57' 53.922"	E 99° 23' 54.791"
		N 2° 58' 2.828"	E 99° 23' 53.969"
Kurniatik	Sei Torop Village, Bosar Maligas Sub District, Simalungun District, Sumatera Utara Province, Indonesia	N 2° 58' 29.675"	E 99° 24' 53.844"
Lusinan	Sei Torop Village, Bosar Maligas Sub District, Simalungun District, Sumatera Utara Province, Indonesia	N 2° 58' 24.429"	E 99° 24' 54.401"
		N 2° 58' 24.429"	E 99° 24' 54.401"
		N 2° 58' 24.429"	E 99° 24' 54.401"

Maranggi P Sihombing	Sei Torop Village, Bosar Maligas Sub District, Simalungun District, Sumatera Utara Province, Indonesia	N 2° 58' 15.489"	E 99° 23' 48.430"
		N 2° 58' 15.489"	E 99° 23' 48.430"
		N 2° 58' 26.350"	E 99° 25' 22.840"
Mar'i Sulaiman Sihombing	Sei Torop Village, Bosar Maligas Sub District, Simalungun District, Sumatera Utara Province, Indonesia	N 2° 58' 15.489"	E 99° 23' 48.430"
Marsono Sinaga	Sei Torop Village, Bosar Maligas Sub District, Simalungun District, Sumatera Utara Province, Indonesia	N 2° 58' 4.284"	E 99° 24' 15.658"
		N 2° 58' 4.284"	E 99° 24' 15.658"
Muadi Sitorus	Sei Torop Village, Bosar Maligas Sub District, Simalungun District, Sumatera Utara Province, Indonesia	N 2° 56' 34.774"	E 99° 24' 40.591"
		N 2° 56' 30.353"	E 99° 24' 40.065"
		N 2° 56' 34.359"	E 99° 24' 47.527"
Nuria Br Sinaga	Sei Torop Village, Bosar Maligas Sub District, Simalungun District, Sumatera Utara Province, Indonesia	N 2° 57' 59.208"	E 99° 24' 3.317"
		N 2° 57' 30.718"	E 99° 24' 10.785"
		N 2° 58' 8.244"	E 99° 24' 54.553"
Polman Sinaga	Sei Torop Village, Bosar Maligas Sub District, Simalungun District, Sumatera Utara Province, Indonesia	N 2° 57' 54.184"	E 99° 24' 51.296"
		N 2° 57' 51.094"	E 99° 24' 47.490"
		N 2° 57' 52.635"	E 99° 24' 48.932"
		N 2° 57' 50.722"	E 99° 24' 6.287"
		N 2° 57' 52.479"	E 99° 24' 32.181"
		N 2° 58' 24.706"	E 99° 24' 58.019"
		N 2° 58' 4.846"	E 99° 24' 47.861"
		N 2° 58' 7.413"	E 99° 24' 51.227"
Ponidi	Sei Torop Village, Bosar Maligas Sub District, Simalungun District, Sumatera Utara Province, Indonesia	N 2° 57' 13.684"	E 99° 24' 48.306"
		N 2° 57' 46.392"	E 99° 24' 15.988"
Rudi Suito Ginting	Sei Torop Village, Bosar Maligas Sub District, Simalungun District, Sumatera Utara Province, Indonesia	N 2° 56' 50.879"	E 99° 24' 32.833"
		N 2° 56' 59.591"	E 99° 24' 14.951"
		N 2° 56' 53.580"	E 99° 24' 21.570"
		N 2° 56' 31.695"	E 99° 24' 33.985"
		N 2° 56' 47.287"	E 99° 24' 59.687"
Sarno	Sei Torop Village, Bosar Maligas Sub District, Simalungun District, Sumatera Utara Province, Indonesia	N 2° 56' 21.081"	E 99° 24' 39.475"
		N 2° 56' 49.972"	E 99° 24' 23.081"
		N 2° 56' 48.615"	E 99° 24' 34.035"
Sarwedi Silalahi	Sei Torop Village, Bosar Maligas Sub District, Simalungun District, Sumatera Utara Province, Indonesia	N 2° 56' 45.012"	E 99° 23' 49.470"
		N 2° 57' 33.233"	E 99° 24' 58.457"
		N 2° 57' 20.459"	E 99° 24' 55.593"
Selamat Ginting	Sei Torop Village, Bosar Maligas Sub District, Simalungun District, Sumatera	N 2° 56' 52.644"	E 99° 24' 30.614"
		N 2° 56' 48.473"	E 99° 24' 39.380"

		Utara Province, Indonesia	N 2° 56' 46.450"	E 99° 24' 32.806"
			N 2° 56' 40.748"	E 99° 24' 34.437"
			N 2° 56' 43.215"	E 99° 24' 40.794"
			N 3° 4' 8.810"	E 99° 27' 0.064"
	Siti Hamidah Sinaga	Sei Torop Village, Bosar Maligas Sub District, Simalungun District, Sumatera Utara Province, Indonesia	N 2° 57' 19.462"	E 99° 24' 35.960"
	Suherman	Sei Torop Village, Bosar Maligas Sub District, Simalungun District, Sumatera Utara Province, Indonesia	N 2° 58' 29.861"	E 99° 23' 36.254"
			N 2° 58' 26.364"	E 99° 23' 48.441"
			N 2° 58' 29.081"	E 99° 24' 10.346"
	Sukri	Sei Torop Village, Bosar Maligas Sub District, Simalungun District, Sumatera Utara Province, Indonesia	N 2° 56' 52.036"	E 99° 24' 37.333"
			N 2° 57' 25.599"	E 99° 24' 55.825"
			N 2° 57' 34.277"	E 99° 25' 12.958"
			N 2° 57' 18.703"	E 99° 25' 10.216"
			N 2° 58' 15.976"	E 99° 24' 57.790"
			N 2° 58' 29.623"	E 99° 24' 58.366"
			N 2° 58' 10.633"	E 99° 24' 56.748"
	Supini Damanik	Sei Torop Village, Bosar Maligas Sub District, Simalungun District, Sumatera Utara Province, Indonesia	N 2° 58' 23.662"	E 99° 25' 2.330"
			N 2° 58' 23.662"	E 99° 25' 2.330"
			N 2° 58' 23.662"	E 99° 25' 2.330"
	Supianto Sitorus	Sei Torop Village, Bosar Maligas Sub District, Simalungun District, Sumatera Utara Province, Indonesia	N 2° 58' 59.053"	E 99° 23' 28.760"
			N 2° 59' 0.240"	E 99° 23' 21.174"
			N 2° 58' 54.082"	E 99° 23' 14.808"
			N 2° 58' 35.612"	E 99° 23' 31.134"
			N 2° 58' 44.929"	E 99° 23' 29.400"
			N 2° 58' 43.830"	E 99° 23' 42.677"
	Susanto	Sei Torop Village, Bosar Maligas Sub District, Simalungun District, Sumatera Utara Province, Indonesia	N 3° 3' 52.193"	E 99° 26' 51.409"
			N 3° 4' 3.346"	E 99° 27' 9.734"
			N 3° 4' 5.832"	E 99° 27' 11.108"
	Suyetno	Sei Torop Village, Bosar Maligas Sub District, Simalungun District, Sumatera Utara Province, Indonesia	N 3° 3' 40.189"	E 99° 26' 20.003"
			N 3° 3' 30.689"	E 99° 25' 57.056"
			N 3° 3' 56.827"	E 99° 25' 58.215"
	Wagino	Sei Torop Village, Bosar Maligas Sub District, Simalungun District, Sumatera Utara Province, Indonesia	N 2° 56' 53.509"	E 99° 25' 5.602"
			N 3° 5' 18.198"	E 99° 23' 20.758"
1.5	Description of Area Statement			
1.5.1	Tenure			
	• State		- Ha	
	• Community		480.12 Ha	

1.5.2	Area Statement				
	• Total area	480.12 Ha			
	• Mature area	480.12 Ha			
1.6.1	Age profile of planting year				
	Planting Year	Hectarage (Ha)			
		KPM-GSBM Total			
	1990	43.44 43.44			
	1992	4.07 4.07			
	1993	0.44 0.44			
	1994	1.59 1.59			
	1995	18.86 18.86			
	1996	26.79 26.79			
	1997	71.27 71.27			
	1998	31.28 31.28			
	1999	37.78 37.78			
	2000	230.62 230.62			
	2001	1.77 1.77			
	2002	5.15 5.15			
	2003	1.53 1.53			
	2004	4.53 4.53			
	2005	1.00 1.00			
	TOTAL	480.12 480.12			
1.6.2	New Planting area after January 2010	- Ha			
1.6.3	Planting Cycle	2 nd Cycle			
1.7	Description of Supply Base				
1.7.1	Description of Certification Scope of Supply Base				
	Name of Member Smallholder	Total Area (Ha)	Planted Area (Ha)	FFB (tonnes/year)	Yield (tonnes/ha/year)
	Ahmad Suprayogi	1.00	1.00	14.25	14.25
		0.24	0.24	4.74	19.75
		0.32	0.32	6.43	20.09
		0.40	0.40	6.56	16.39
	Aidil	0.12	0.12	1.82	15.17
		0.17	0.17	2.30	13.50
	Amiruddin Sinaga	0.79	0.79	14.20	17.97
		0.30	0.30	3.81	12.70
		0.12	0.12	1.82	15.17
	Ardin	0.56	0.56	8.88	15.86
Budianto	0.44	0.44	6.56	14.90	

	0.08	0.08	1.28	16.00
Dalwanti	0.60	0.60	9.54	15.90
Efendi	0.58	0.58	10.94	18.86
Fahmi Sitepu	0.69	0.69	10.50	15.21
	0.40	0.40	6.56	16.39
Fitriadi	0.24	0.24	4.29	17.88
	1.00	1.00	17.20	17.20
	0.88	0.88	13.75	15.63
Hasan	1.36	1.36	22.55	16.58
	0.60	0.60	9.54	15.90
Heri	0.44	0.44	6.56	14.90
Irwanto	0.87	0.87	12.49	14.36
Iskamalludin	0.40	0.40	6.56	16.39
Jamer Purba	2.18	2.18	30.32	13.91
	0.36	0.36	7.45	20.69
	1.45	1.45	30.32	20.91
	0.50	0.50	9.54	19.08
Japasu Sinaga	1.40	1.40	29.91	21.36
	0.92	0.92	13.75	14.95
	2.64	2.64	44.40	16.82
	0.64	0.64	9.54	14.91
	1.16	1.16	19.59	16.89
	1.24	1.24	21.34	17.21
	0.52	0.52	9.27	17.82
	3.08	3.08	66.34	21.54
	0.68	0.68	9.54	14.03
	1.28	1.28	22.12	17.28
	0.24	0.24	4.04	16.83
	0.26	0.26	4.31	16.58
	1.48	1.48	30.11	20.34
	1.00	1.00	19.96	19.96
	0.60	0.60	9.53	15.88
	0.12	0.12	1.82	15.17
	0.44	0.44	9.78	22.23
Juminah	1.00	1.00	20.11	20.11
Kardi	0.24	0.24	3.96	16.50
	1.36	1.36	25.28	18.59
Karnak	0.68	0.68	9.54	14.03
Karnan	0.22	0.22	3.96	18.00
Kerman	2.92	2.92	41.50	14.21
	2.00	2.00	25.03	12.51
	0.64	0.64	9.33	14.58
	1.40	1.40	22.28	15.91
	1.08	1.08	18.94	17.54
	1.20	1.20	20.48	17.07
	1.50	1.50	20.48	13.65
	0.40	0.40	6.56	16.39

	3.00	3.00	41.50	13.83
	2.00	2.00	25.03	12.51
	1.60	1.60	20.48	12.80
	0.22	0.22	4.73	21.50
	1.08	1.08	20.97	19.42
	1.20	1.20	19.25	16.04
Khairul Anwar Siregar	0.32	0.32	6.62	20.69
	3.20	3.20	41.50	12.97
	0.28	0.28	6.43	22.95
	0.40	0.40	6.56	16.39
	0.60	0.60	9.54	15.90
Kiran	0.92	0.92	16.42	17.84
	0.92	0.92	16.42	17.84
Lamin	0.48	0.48	7.95	16.56
	0.35	0.35	3.45	9.86
	0.32	0.32	6.42	20.06
	0.28	0.28	3.45	12.32
Lasiman	1.00	1.00	20.11	20.11
	0.69	0.69	8.20	11.88
	0.84	0.84	14.96	17.81
Legimin	0.92	0.92	16.30	17.72
	0.92	0.92	17.95	19.51
Lukito	1.00	1.00	20.11	20.11
M Syair	1.00	1.00	20.11	20.11
	1.16	1.16	20.62	17.78
Manijo	0.56	0.56	9.68	17.28
	0.36	0.36	5.70	15.83
Masri Tambun	0.22	0.22	4.41	20.05
Misman	0.40	0.40	6.56	16.39
Mudawar	2.00	2.00	42.70	21.35
	0.68	0.68	13.23	19.46
	0.60	0.60	9.54	15.90
	0.72	0.72	7.87	10.93
	1.80	1.80	30.32	16.84
	0.80	0.80	3.19	3.99
	1.99	1.99	30.32	15.24
	0.61	0.61	9.54	15.64
	1.51	1.51	30.32	20.08
	1.58	1.58	30.32	19.19
	0.52	0.52	7.75	14.90
	0.48	0.48	7.65	15.94
	0.40	0.40	6.56	16.39
	0.68	0.68	9.54	14.03
	0.80	0.80	9.54	11.93
	1.00	1.00	20.11	20.11
Nasip	0.20	0.20	3.88	19.40
	0.40	0.40	6.56	16.39

	0.40	0.40	6.56	16.39
	0.40	0.40	6.56	16.39
Ngatino	1.02	1.02	20.11	19.71
	1.05	1.05	20.11	19.15
	0.79	0.79	14.40	18.23
Nurul Hakim	2.40	2.40	40.60	16.92
Paidi A	0.24	0.24	4.73	19.71
	0.20	0.20	3.70	18.50
	0.20	0.20	3.70	18.50
	0.92	0.92	14.40	15.65
	0.50	0.50	9.54	19.08
	0.48	0.48	10.03	20.90
Painem	0.70	0.70	13.17	18.81
Paing	0.46	0.46	4.73	10.28
Poniatik	0.20	0.20	3.60	18.00
Ponimin	0.60	0.60	9.54	15.90
	0.63	0.63	9.54	15.14
Rajali Sinaga	2.00	2.00	39.76	19.88
Riadi	1.00	1.00	16.42	16.42
	1.00	1.00	16.42	16.42
Ribut	1.58	1.58	30.32	19.19
	0.44	0.44	6.56	14.90
	0.28	0.28	4.91	17.54
	0.82	0.82	14.96	18.24
	1.91	1.91	30.32	15.87
	1.91	1.91	30.32	15.87
	0.48	0.48	10.66	22.20
	0.24	0.24	4.73	19.71
	0.24	0.24	4.73	19.71
	0.40	0.40	6.56	16.39
	0.36	0.36	5.70	15.83
	0.60	0.60	9.54	15.90
Rini	0.64	0.64	9.54	14.91
Rojiun	0.38	0.38	5.70	15.00
	0.80	0.80	10.18	12.73
	0.30	0.30	3.70	12.33
	0.20	0.20	3.70	18.50
	0.32	0.32	5.70	17.81
	0.50	0.50	10.18	20.36
	0.50	0.50	10.18	20.36
	0.18	0.18	3.01	16.72
	0.53	0.53	10.18	19.21
	0.20	0.20	3.70	18.50
	0.22	0.22	3.70	16.82
	0.34	0.34	5.70	16.76
Sabar Walgi	2.00	2.00	39.76	19.88
	1.60	1.60	26.65	16.66

Sabariato	2.00	2.00	39.76	19.88
Sagiyem	0.36	0.36	5.70	15.83
Saiman	0.28	0.28	6.33	22.59
Salim	0.08	0.08	1.12	14.00
Samiran	0.60	0.60	8.50	14.17
Saparimin	0.44	0.44	6.63	15.06
	0.44	0.44	6.67	15.15
	1.00	1.00	19.86	19.86
Sarian	0.45	0.45	9.01	20.02
Sariato	0.40	0.40	6.56	16.39
	1.31	1.31	26.65	20.34
	1.90	1.90	26.65	14.03
Sawiyen	3.00	3.00	70.95	23.65
Selamat	0.28	0.28	6.43	22.95
Sudarman	0.67	0.67	12.66	18.90
Suhelman Sitepu Suhid	0.38	0.38	5.70	15.00
	0.18	0.18	3.01	16.72
	0.18	0.18	3.01	16.72
	0.52	0.52	10.18	19.58
	0.34	0.34	6.48	19.04
	0.42	0.42	6.43	15.30
	0.34	0.34	6.48	19.04
	0.80	0.80	9.54	11.93
Sukarles Siregar	0.32	0.32	5.70	17.81
Sukirman	0.12	0.12	1.82	15.17
Sulastri	0.40	0.40	6.56	16.39
Sumarno S	0.37	0.37	5.70	15.41
Supriadi Huta	0.40	0.40	6.56	16.39
	0.32	0.32	5.70	17.81
Suparmin	0.36	0.36	5.70	15.83
Supiono	0.38	0.38	6.48	17.04
	2.40	2.40	30.32	12.63
Supriadi	0.40	0.40	6.56	16.39
Supriani	0.28	0.28	4.47	15.96
	0.48	0.48	9.01	18.77
Suratman	0.56	0.56	11.54	20.61
	0.24	0.24	3.65	15.21
	0.28	0.28	4.47	15.96
Surep	0.40	0.40	6.56	16.39
	1.00	1.00	13.75	13.75
	0.64	0.64	9.54	14.91
Superno	0.40	0.40	8.81	22.03
	0.40	0.40	8.96	22.40
Suryadi	0.40	0.40	6.66	16.64
	0.40	0.40	6.76	16.89
	0.05	0.05	0.65	13.00
	0.52	0.52	11.81	22.71

	0.60	0.60	9.54	15.90
	0.44	0.44	6.56	14.90
	0.99	0.99	13.75	13.89
	0.67	0.67	9.54	14.24
	0.72	0.72	9.54	13.25
	0.60	0.60	9.54	15.90
Suwarno	0.28	0.28	4.47	15.96
Takrif	0.80	0.80	11.98	14.97
	0.50	0.50	9.54	19.08
Tirto Suwito	1.00	1.00	13.75	13.75
Tukiran	0.32	0.32	5.70	17.81
Tukiyo	0.40	0.40	6.56	16.39
Tursimin	0.43	0.43	6.56	15.24
Tutur	0.08	0.08	1.12	14.00
	0.48	0.48	11.81	24.60
Waginem	0.40	0.40	6.56	16.39
	0.80	0.80	13.75	17.19
Warsito	1.00	1.00	19.25	19.25
Windari	0.40	0.40	6.56	16.39
Yatmo	0.60	0.60	10.48	17.47
	0.68	0.68	8.93	13.13
Zainal Arifin Siregar	2.36	2.36	36.26	15.36
	1.00	1.00	19.86	19.86
	0.54	0.54	11.39	21.09
Jimahata Siagian	0.18	0.18	3.10	17.22
Munah	0.15	0.15	2.80	18.67
	2.57	2.57	41.50	16.15
Rusdi	1.25	1.25	26.65	21.32
	1.25	1.25	26.65	21.32
	1.10	1.10	17.30	15.73
Wahab Makmur Situmorang	0.89	0.89	14.96	16.81
	0.44	0.44	6.56	14.90
Ade Prastiono Situmorang	0.89	0.89	13.94	15.66
Adi Retno	0.04	0.04	0.62	15.50
Ahmad Safri	0.42	0.42	7.21	17.16
Ali Usman	0.82	0.82	10.57	12.89
Amer Amandus Sijabat	0.52	0.52	10.08	19.38
	0.38	0.38	6.86	18.05
Darimun	0.18	0.18	3.42	19.21
Eko Joko Syaputro	0.12	0.12	1.82	15.17
Heri Irwansyah	0.43	0.43	6.56	15.24
	1.03	1.03	18.12	17.59
Jonar	0.52	0.52	10.18	19.58
	0.96	0.96	13.75	14.32
	0.62	0.62	9.33	15.05
Juliandi Situmorang	0.05	0.05	0.62	12.40
Kamaludin	0.31	0.31	3.49	11.24

	0.18	0.18	3.10	17.22
	0.56	0.56	8.06	14.39
	0.83	0.83	8.58	10.34
Kasirin	0.06	0.06	1.08	18.00
Mijiter	0.41	0.41	8.10	19.76
Muhammad Nur Efendi	0.58	0.58	8.85	15.26
Muhammad Parlin Purba	0.33	0.33	5.70	17.27
Paino	0.22	0.22	3.64	16.55
Rahmad Efendi	0.12	0.12	1.76	14.63
Sariaman Sinaga	0.64	0.64	9.54	14.91
Sri Kiswanto	1.25	1.25	26.65	21.32
	2.12	2.12	39.76	18.75
	0.61	0.61	9.54	15.64
Sri Ningsih	0.04	0.04	0.62	15.50
Sunarti	0.59	0.59	10.04	17.02
Tukimin	0.19	0.19	3.65	19.21
Usman	0.17	0.17	2.34	13.76
Achmad Nalenta Sinaga	0.68	0.68	8.93	13.13
	0.32	0.32	6.43	20.09
Boimin	0.37	0.37	6.48	17.50
	0.72	0.72	10.42	14.47
Budiono Damanik	0.32	0.32	6.48	20.23
Cahaya sinaga	0.78	0.78	10.90	13.97
Hermanto	0.36	0.36	6.48	17.99
Jasmin	0.34	0.34	3.45	10.15
Kasmen	0.16	0.16	3.10	19.38
	0.84	0.84	8.58	10.21
	0.88	0.88	12.05	13.69
	0.99	0.99	13.75	13.89
Ngatiman	0.41	0.41	5.47	13.33
	0.51	0.51	8.85	17.35
Paiman T	0.79	0.79	14.02	17.75
Parno	1.39	1.39	21.48	15.45
Puja Saputra	0.93	0.93	15.60	16.77
Riaman	1.07	1.07	15.60	14.58
Sakiran Sinaga	0.56	0.56	4.30	7.68
	0.48	0.48	8.97	18.69
Sipon	0.46	0.46	10.83	23.54
Sriyatno	0.28	0.28	6.43	22.95
	0.19	0.19	3.01	15.84
	0.15	0.15	2.80	18.67
Sutarno	0.44	0.44	6.03	13.70
Tunut	0.26	0.26	4.52	17.38
Yusminarno	0.88	0.88	13.10	14.89
Gunawan Pasaribu	0.38	0.38	6.48	17.04
	0.15	0.15	2.44	16.27
Heru Ardianto	1.00	1.00	17.20	17.20

	1.54	1.54	22.55	14.64
	1.79	1.79	30.96	17.30
Akad Sitorus	1.28	1.28	22.05	17.23
	0.45	0.45	6.43	14.28
	0.08	0.08	1.28	16.00
	1.34	1.34	22.55	16.83
	1.01	1.01	14.25	14.11
Ali Sarpati Sinaga	0.99	0.99	16.70	16.87
	1.32	1.32	22.55	17.08
	1.05	1.05	13.75	13.10
	0.56	0.56	12.13	21.65
	1.99	1.99	34.20	17.19
Henny	0.24	0.24	3.45	14.38
	0.22	0.22	3.45	15.68
	0.20	0.20	3.88	19.40
Mardiana	0.58	0.58	12.66	21.83
Muhammad Alfhissha Sinaga	0.41	0.41	7.65	18.66
Nano	0.36	0.36	5.70	15.83
Ngademan	0.49	0.49	9.60	19.58
	0.98	0.98	14.40	14.69
Resman Purba	1.00	1.00	20.11	20.11
Supriadi	0.36	0.36	5.70	15.83
	0.32	0.32	5.70	17.81
	0.36	0.36	5.70	15.83
Suratmin	0.72	0.72	11.92	16.56
Suratno	0.60	0.60	9.54	15.90
Wagino	1.00	1.00	19.18	19.18
	1.00	1.00	19.45	19.45
B. Sirait	0.16	0.16	2.09	13.06
Berliana Br. Damanik	0.56	0.56	8.88	15.86
	1.30	1.30	22.55	17.35
Darman	0.92	0.92	13.48	14.65
	0.40	0.40	6.56	16.39
	0.25	0.25	4.03	16.12
Delima Manurung	1.10	1.10	16.50	15.00
Elvina Manurung	2.00	2.00	33.61	16.81
	1.00	1.00	16.50	16.50
Hendra Situmorang	7.77	7.77	125.46	16.15
Hendra Wahyudi	0.80	0.80	11.61	14.51
	0.44	0.44	6.56	14.90
	0.29	0.29	4.69	16.16
	0.16	0.16	3.39	21.19
Hotman Damanik	1.20	1.20	19.25	16.04
	2.00	2.00	40.60	20.30
	1.92	1.92	30.32	15.79
Irwansyah	6.04	6.04	108.50	17.96
Jamel Hutabalan	1.15	1.15	20.50	17.83

Jamroni	1.15	1.15	20.65	17.96
Julpri Sialagan	2.75	2.75	28.82	10.48
Junaidi	0.43	0.43	7.55	17.56
	0.32	0.32	5.70	17.81
	0.32	0.32	5.70	17.81
Kisruk Wibowo	1.00	1.00	16.42	16.42
	1.00	1.00	16.42	16.42
	0.80	0.80	2.50	3.13
	2.00	2.00	37.00	18.50
	0.50	0.50	9.54	19.08
	0.50	0.50	6.56	13.11
	0.44	0.44	6.52	14.81
Lianto Simbolon	0.50	0.50	9.54	19.08
Maruli Ambarita	1.00	1.00	20.00	20.00
Masniar Siburian	1.00	1.00	19.97	19.97
	0.56	0.56	10.20	18.21
Minton Manurung	3.00	3.00	39.25	13.08
	1.00	1.00	18.18	18.18
Monang Damanik	1.00	1.00	20.11	20.11
Nasem	0.72	0.72	12.57	17.46
	0.34	0.34	3.45	10.15
	0.24	0.24	3.45	14.38
	0.80	0.80	9.54	11.93
Pardi Sirait	0.04	0.04	0.62	15.50
Ponimah Manurung	0.50	0.50	5.79	11.58
	0.12	0.12	1.76	14.63
Rianto Ambarita	1.05	1.05	20.95	19.95
Rohamin Sinaga	0.50	0.50	9.60	19.20
Saidi Sinaga	1.00	1.00	17.30	17.30
Solihin	0.20	0.20	3.53	17.65
	0.32	0.32	5.70	17.81
	0.68	0.68	12.66	18.62
Sri Elisa	1.00	1.00	16.42	16.42
	0.74	0.74	12.95	17.50
	0.88	0.88	12.66	14.39
	0.59	0.59	9.43	15.98
Sugiar	0.80	0.80	9.43	11.79
	0.60	0.60	9.54	15.90
	0.60	0.60	9.54	15.90
Sunardi	1.00	1.00	13.75	13.75
	0.60	0.60	9.54	15.90
Tunggak	0.88	0.88	12.05	13.69
	0.64	0.64	6.03	9.42
Zulkifli Manurung	0.56	0.56	11.54	20.61
Temu	0.44	0.44	6.56	14.90
	0.16	0.16	2.34	14.63
	0.12	0.12	1.76	14.63

Sadikun	0.56	0.56	4.30	7.68
Sunardi	1.00	1.00	19.86	19.86
Selamat Handoko	1.00	1.00	19.86	19.86
Sapar	0.82	0.82	11.80	14.39
	0.09	0.09	1.21	13.39
Ade Setiawan	0.84	0.84	12.98	15.45
Ahmad Rifai Sarumpaet	4.80	4.80	78.45	16.34
Amirudin	1.50	1.50	30.96	20.64
	2.00	2.00	40.60	20.30
Amran Sinaga	4.50	4.50	78.50	17.44
Anum Sitorus	7.60	7.60	124.20	16.34
Azhar	1.58	1.58	25.60	16.20
	1.58	1.58	25.39	16.07
	1.00	1.00	18.65	18.65
	0.68	0.68	10.42	15.32
Azis Sinaga	1.50	1.50	25.60	17.07
	3.50	3.50	60.07	17.16
Boimen	1.58	1.58	25.60	16.20
	1.58	1.58	25.39	16.07
	0.70	0.70	10.90	15.57
Dumoli Simanjuntak	1.25	1.25	20.89	16.71
	1.25	1.25	20.89	16.71
Efendi Saragih	2.00	2.00	33.61	16.81
Gunawan	2.00	2.00	30.32	15.16
Herman	0.70	0.70	10.90	15.57
Jumiran	0.14	0.14	2.86	20.43
Kamidi	1.50	1.50	24.48	16.32
	1.50	1.50	22.28	14.85
	1.50	1.50	20.48	13.65
Kurniatik	2.00	2.00	38.00	19.00
Lusinan	0.76	0.76	7.48	9.84
	0.76	0.76	7.64	10.05
	1.53	1.53	21.79	14.24
Maranggi P Sihombing	1.00	1.00	20.11	20.11
	1.00	1.00	20.11	20.11
	3.20	3.20	41.50	12.97
Mar'i Sulaiman Sihombing	4.50	4.50	82.15	18.26
Marsono Sinaga	1.83	1.83	24.70	13.50
	1.80	1.80	31.40	17.44
Muadi Sitorus	3.20	3.20	42.35	13.23
	3.20	3.20	41.50	12.97
	7.90	7.90	68.79	8.71
	2.40	2.40	41.50	17.29
Nuria Br Sinaga	1.25	1.25	26.65	21.32
	1.00	1.00	20.11	20.11
	1.25	1.25	24.70	19.76
Polman Sinaga	1.25	1.25	24.55	19.64

	1.00	1.00	16.42	16.42
	1.00	1.00	16.42	16.42
	1.00	1.00	16.42	16.42
	1.00	1.00	16.42	16.42
	1.00	1.00	16.42	16.42
	1.00	1.00	16.42	16.42
	1.00	1.00	16.42	16.42
Ponidi	3.00	3.00	41.50	13.83
	1.50	1.50	32.75	21.83
Rudi Suito Ginting	1.00	1.00	16.42	16.42
	2.00	2.00	37.50	18.75
	1.50	1.50	26.09	17.39
	1.00	1.00	16.42	16.42
	1.00	1.00	16.42	16.42
Sarno	1.00	1.00	16.42	16.42
	0.89	0.89	13.75	15.45
	0.94	0.94	15.45	16.44
Sarwedi Silalahi	1.58	1.58	30.32	19.19
	1.58	1.58	30.32	19.19
	7.00	7.00	106.65	15.24
Selamat Ginting	1.58	1.58	36.70	23.23
	1.58	1.58	37.30	23.61
	1.58	1.58	36.70	23.23
	1.58	1.58	37.40	23.67
	1.50	1.50	34.75	23.17
	1.50	1.50	35.55	23.70
Siti Hamidah Sinaga	6.00	6.00	106.65	17.78
Suherman	1.50	1.50	31.27	20.85
	1.50	1.50	31.12	20.75
	1.50	1.50	32.61	21.74
Sukri	1.32	1.32	20.95	15.87
	2.50	2.50	41.00	16.40
	2.56	2.56	41.50	16.21
	7.00	7.00	106.65	15.24
	1.58	1.58	32.61	20.64
	2.46	2.46	41.50	16.87
	2.45	2.45	41.50	16.94
Supini Damanik	1.58	1.58	31.10	19.68
	0.82	0.82	14.20	17.32
	1.00	1.00	13.75	13.75
Supianto Sitorus	3.00	3.00	48.10	16.03
	3.00	3.00	48.10	16.03
	1.50	1.50	32.42	21.61
	1.50	1.50	32.41	21.61
	1.50	1.50	32.41	21.61
	2.00	2.00	32.41	16.21
Susanto	0.16	0.16	2.34	14.63

		0.28	0.28	4.47	15.96
		0.16	0.16	2.34	14.63
	Suyetno	0.72	0.72	7.87	10.93
		0.64	0.64	9.54	14.91
		0.72	0.72	9.54	13.25
	Wagino	1.50	1.50	30.97	20.65
		1.50	1.50	30.97	20.65
	TOTAL		480.12	480.12	8,027.60
1.8	Tonnage of Product				
1.8.1	Past Annual Claim Certified Product	Last Year Projected Certified Volume (MT)		Last Year Actual Certified Volume (mm yy to mm yy) (MT)	
	• FFB Production	-		-	
	• CSPO Production	-		-	
	• CSPKE Production	-		-	
	• CSPKO Production	-		-	
1.8.2	Product selling				
	Tonnage of selling product		Actual selling product for last year (mm yy to mm yy) (MT)		
	• CSPO sold as RSPO certified product		-		
	• CSPK sold as RSPO certified product		-		
	• CSPO sold under other scheme		-		
	• CSPK sold under other scheme		-		
	• CSPO sold as conventional		-		
	• CSPK sold as conventional		-		
1.8.3	Estimate Certified FFB Claim				
	Name of Member Smallholder	Total Area (Ha)	Planted Area (Ha)	FFB (tonnes/year)	Yield (tonnes/ha/year)
	Ahmad Suprayogi	1.00	1.00	15.00	15.00
		0.24	0.24	5.00	20.83
		0.32	0.32	7.00	21.88
		0.40	0.40	7.00	17.50
	Aidil	0.12	0.12	2.00	16.67
		0.17	0.17	2.00	11.76
	Amiruddin Sinaga	0.79	0.79	14.00	17.72
		0.30	0.30	4.00	13.33
		0.12	0.12	2.00	16.67
	Ardin	0.56	0.56	9.00	16.07
	Budianto	0.44	0.44	7.00	15.91
		0.08	0.08	1.00	12.50
	Dalwanti	0.60	0.60	10.00	16.67
	Efendi	0.58	0.58	11.00	18.97
	Fahmi Sitepu	0.69	0.69	11.00	15.94
		0.40	0.40	7.00	17.50
	Fitriadi	0.24	0.24	4.00	16.67
		1.00	1.00	18.00	18.00

	0.88	0.88	14.00	15.91
Hasan	1.36	1.36	23.00	16.91
	0.60	0.60	10.00	16.67
Heri	0.44	0.44	7.00	15.91
Irwanto	0.87	0.87	13.00	14.94
Iskamalludin	0.40	0.40	7.00	17.50
Jamer Purba	2.18	2.18	31.00	14.22
	0.36	0.36	8.00	22.22
	1.45	1.45	31.00	21.38
	0.50	0.50	10.00	20.00
Japasu Sinaga	1.40	1.40	31.00	22.14
	0.92	0.92	14.00	15.22
	2.64	2.64	45.00	17.05
	0.64	0.64	10.00	15.63
	1.16	1.16	20.00	17.24
	1.24	1.24	22.00	17.74
	0.52	0.52	9.00	17.31
	3.08	3.08	68.00	22.08
	0.68	0.68	10.00	14.71
	1.28	1.28	23.00	17.97
	0.24	0.24	4.00	16.67
	0.26	0.26	4.00	15.38
	1.48	1.48	31.00	20.95
	1.00	1.00	20.00	20.00
	0.60	0.60	10.00	16.67
	0.12	0.12	2.00	16.67
	0.44	0.44	10.00	22.73
Juminah	1.00	1.00	21.00	21.00
Kardi	0.24	0.24	4.00	16.67
	1.36	1.36	26.00	19.12
Karnak	0.68	0.68	10.00	14.71
Karnan	0.22	0.22	4.00	18.18
Kerman	2.92	2.92	42.00	14.38
	2.00	2.00	26.00	13.00
	0.64	0.64	10.00	15.63
	1.40	1.40	23.00	16.43
	1.08	1.08	19.00	17.59
	1.20	1.20	21.00	17.50
	1.50	1.50	21.00	14.00
	0.40	0.40	7.00	17.50
	3.00	3.00	42.00	14.00
	2.00	2.00	26.00	13.00
	1.60	1.60	21.00	13.13
	0.22	0.22	5.00	22.73
	1.08	1.08	21.00	19.44
	1.20	1.20	20.00	16.67
Khairul Anwar Siregar	0.32	0.32	7.00	21.88

	3.20	3.20	42.00	13.13
	0.28	0.28	7.00	25.00
	0.40	0.40	7.00	17.50
	0.60	0.60	10.00	16.67
Kiran	0.92	0.92	17.00	18.48
	0.92	0.92	17.00	18.48
Lamin	0.48	0.48	8.00	16.67
	0.35	0.35	4.00	11.43
	0.32	0.32	7.00	21.88
	0.28	0.28	4.00	14.29
Lasiman	1.00	1.00	21.00	21.00
	0.69	0.69	8.00	11.59
	0.84	0.84	15.00	17.86
Legimin	0.92	0.92	17.00	18.48
	0.92	0.92	18.00	19.57
Lukito	1.00	1.00	21.00	21.00
M Syair	1.00	1.00	21.00	21.00
	1.16	1.16	21.00	18.10
Manijo	0.56	0.56	10.00	17.86
	0.36	0.36	6.00	16.67
Masri Tambun	0.22	0.22	4.00	18.18
Misman	0.40	0.40	7.00	17.50
	2.00	2.00	44.00	22.00
	0.68	0.68	13.00	19.12
	0.60	0.60	10.00	16.67
	0.72	0.72	8.00	11.11
	1.80	1.80	31.00	17.22
	0.80	0.80	3.00	3.75
	1.99	1.99	31.00	15.58
	0.61	0.61	10.00	16.39
	1.51	1.51	31.00	20.53
	1.58	1.58	31.00	19.62
	0.52	0.52	8.00	15.38
	0.48	0.48	8.00	16.67
	0.40	0.40	7.00	17.50
	0.68	0.68	10.00	14.71
	0.80	0.80	10.00	12.50
	1.00	1.00	21.00	21.00
Nasip	0.20	0.20	4.00	20.00
	0.40	0.40	7.00	17.50
	0.40	0.40	7.00	17.50
	0.40	0.40	7.00	17.50
Ngatino	1.02	1.02	21.00	20.59
	1.05	1.05	21.00	20.00
	0.79	0.79	15.00	18.99
Nurul Hakim	2.40	2.40	41.00	17.08
Paidi A	0.24	0.24	5.00	20.83

	0.20	0.20	4.00	20.00
	0.20	0.20	4.00	20.00
	0.92	0.92	15.00	16.30
	0.50	0.50	10.00	20.00
	0.48	0.48	10.00	20.83
Painem	0.70	0.70	13.00	18.57
Paing	0.46	0.46	5.00	10.87
Poniatik	0.20	0.20	4.00	20.00
Ponimin	0.60	0.60	10.00	16.67
	0.63	0.63	10.00	15.87
Rajali Sinaga	2.00	2.00	41.00	20.50
Riadi	1.00	1.00	17.00	17.00
	1.00	1.00	17.00	17.00
Ribut	1.58	1.58	31.00	19.62
	0.44	0.44	7.00	15.91
	0.28	0.28	5.00	17.86
	0.82	0.82	15.00	18.29
	1.91	1.91	31.00	16.23
	1.91	1.91	31.00	16.23
	0.48	0.48	11.00	22.92
	0.24	0.24	5.00	20.83
	0.24	0.24	5.00	20.83
	0.40	0.40	7.00	17.50
	0.36	0.36	6.00	16.67
	0.60	0.60	10.00	16.67
Rini	0.64	0.64	10.00	15.63
Rojiun	0.38	0.38	6.00	15.79
	0.80	0.80	10.00	12.50
	0.30	0.30	4.00	13.33
	0.20	0.20	4.00	20.00
	0.32	0.32	6.00	18.75
	0.50	0.50	10.00	20.00
	0.50	0.50	10.00	20.00
	0.18	0.18	3.00	16.67
	0.53	0.53	10.00	18.87
	0.20	0.20	4.00	20.00
	0.22	0.22	4.00	18.18
Sabar Walgi	0.34	0.34	6.00	17.65
	2.00	2.00	41.00	20.50
	1.60	1.60	27.00	16.88
Sabariato	2.00	2.00	41.00	20.50
Sagiyem	0.36	0.36	6.00	16.67
Saiman	0.28	0.28	6.00	21.43
Salim	0.08	0.08	1.00	12.50
Samiran	0.60	0.60	9.00	15.00
Saparimin	0.44	0.44	7.00	15.91
	0.44	0.44	7.00	15.91

	1.00	1.00	20.00	20.00
Sarian	0.45	0.45	9.00	20.00
Sarianto	0.40	0.40	7.00	17.50
	1.31	1.31	27.00	20.61
	1.90	1.90	27.00	14.21
Sawiyen	3.00	3.00	72.00	24.00
Selamat	0.28	0.28	7.00	25.00
Sudarman	0.67	0.67	13.00	19.40
Suhelman Sitepu Suhid	0.38	0.38	6.00	15.79
	0.18	0.18	3.00	16.67
	0.18	0.18	3.00	16.67
	0.52	0.52	10.00	19.23
	0.34	0.34	7.00	20.59
	0.42	0.42	7.00	16.67
	0.34	0.34	7.00	20.59
	0.80	0.80	10.00	12.50
Sukarles Siregar	0.32	0.32	6.00	18.75
Sukirman	0.12	0.12	2.00	16.67
Sulastri	0.40	0.40	7.00	17.50
Sumarno S	0.37	0.37	6.00	16.22
Supriadi Huta	0.40	0.40	7.00	17.50
	0.32	0.32	6.00	18.75
Suparmin	0.36	0.36	6.00	16.67
Supiono	0.38	0.38	7.00	18.42
	2.40	2.40	31.00	12.92
Supriadi	0.40	0.40	7.00	17.50
Supriani	0.28	0.28	5.00	17.86
	0.48	0.48	9.00	18.75
Suratman	0.56	0.56	12.00	21.43
	0.24	0.24	4.00	16.67
	0.28	0.28	5.00	17.86
Surep	0.40	0.40	7.00	17.50
	1.00	1.00	14.00	14.00
	0.64	0.64	10.00	15.63
Superno	0.40	0.40	9.00	22.50
	0.40	0.40	9.00	22.50
Suryadi	0.40	0.40	7.00	17.50
	0.40	0.40	7.00	17.50
	0.05	0.05	1.00	20.00
	0.52	0.52	12.00	23.08
	0.60	0.60	10.00	16.67
	0.44	0.44	7.00	15.91
	0.99	0.99	14.00	14.14
	0.67	0.67	10.00	14.93
	0.72	0.72	10.00	13.89
	0.60	0.60	10.00	16.67
Suwarno	0.28	0.28	5.00	17.86

Takrif	0.80	0.80	12.00	15.00
	0.50	0.50	10.00	20.00
Tirto Suwito	1.00	1.00	14.00	14.00
Tukiran	0.32	0.32	6.00	18.75
Tukiyo	0.40	0.40	7.00	17.50
Tursimin	0.43	0.43	7.00	16.28
Tutur	0.08	0.08	1.00	12.50
Waginem	0.48	0.48	12.00	25.00
	0.40	0.40	7.00	17.50
	0.80	0.80	14.00	17.50
Warsito	1.00	1.00	20.00	20.00
Windari	0.40	0.40	7.00	17.50
Yatmo	0.60	0.60	11.00	18.33
Zainal Arifin Siregar	0.68	0.68	9.00	13.24
	2.36	2.36	37.00	15.68
	1.00	1.00	20.00	20.00
	0.54	0.54	12.00	22.22
Jimahata Siagian	0.18	0.18	3.00	16.67
Munah	0.15	0.15	3.00	20.00
Rusdi	2.57	2.57	42.00	16.34
	1.25	1.25	27.00	21.60
	1.25	1.25	27.00	21.60
	1.10	1.10	18.00	16.36
Wahab Makmur Situmorang	0.89	0.89	15.00	16.85
	0.44	0.44	7.00	15.91
Ade Prastiono Situmorang	0.89	0.89	14.00	15.73
Adi Retno	0.04	0.04	1.00	25.00
Ahmad Safri	0.42	0.42	7.00	16.67
Ali Usman	0.82	0.82	11.00	13.41
Amer Amandus Sijabat	0.52	0.52	10.00	19.23
Darimun	0.38	0.38	7.00	18.42
	0.18	0.18	3.00	16.85
Eko Joko Syaputro	0.12	0.12	2.00	16.67
Heri Irwansyah	0.43	0.43	7.00	16.28
Jonar	1.03	1.03	18.00	17.48
	0.52	0.52	10.00	19.23
	0.96	0.96	14.00	14.58
	0.62	0.62	10.00	16.13
Juliandi Situmorang	0.05	0.05	1.00	20.00
Kamaludin	0.31	0.31	4.00	12.90
	0.18	0.18	3.00	16.67
	0.56	0.56	8.00	14.29
	0.83	0.83	9.00	10.84
Kasirin	0.06	0.06	1.00	16.67
Mijiter	0.41	0.41	8.00	19.51
Muhammad Nur Efendi	0.58	0.58	9.00	15.52
Muhammad Parlin Purba	0.33	0.33	6.00	18.18

Paino	0.22	0.22	4.00	18.18
Rahmad Efendi	0.12	0.12	2.00	16.67
Sariaman Sinaga	0.64	0.64	10.00	15.63
Sri Kiswanto	1.25	1.25	27.00	21.60
	2.12	2.12	41.00	19.34
	0.61	0.61	10.00	16.39
Sri Ningsih	0.04	0.04	1.00	25.00
Sunarti	0.59	0.59	10.00	16.95
Tukimin	0.19	0.19	4.00	21.05
Usman	0.17	0.17	2.00	11.76
Achmad Nalenta Sinaga	0.68	0.68	9.00	13.24
	0.32	0.32	7.00	21.88
Boimin	0.37	0.37	7.00	18.92
	0.72	0.72	11.00	15.28
Budiono Damanik	0.32	0.32	7.00	21.88
Cahaya sinaga	0.78	0.78	11.00	14.10
Hermanto	0.36	0.36	7.00	19.44
Jasmin	0.34	0.34	4.00	11.76
Kasmen	0.16	0.16	3.00	18.75
	0.84	0.84	9.00	10.71
	0.88	0.88	12.00	13.64
	0.99	0.99	14.00	14.14
Ngatiman	0.41	0.41	6.00	14.63
	0.51	0.51	9.00	17.65
Paiman T	0.79	0.79	14.00	17.72
Parno	1.39	1.39	22.00	15.83
Puja Saputra	0.93	0.93	16.00	17.20
Riaman	1.07	1.07	16.00	14.95
Sakiran Sinaga	0.56	0.56	4.00	7.14
	0.48	0.48	9.00	18.75
Sipon	0.46	0.46	11.00	23.91
Sriyatno	0.28	0.28	7.00	25.00
	0.19	0.19	3.00	15.79
	0.15	0.15	3.00	20.00
Sutarno	0.44	0.44	6.00	13.64
Tunut	0.26	0.26	5.00	19.23
Yusminarno	0.88	0.88	13.00	14.77
Gunawan Pasaribu	0.38	0.38	7.00	18.42
	0.15	0.15	2.00	13.33
Heru Ardianto	1.00	1.00	18.00	18.00
	1.54	1.54	23.00	14.94
	1.79	1.79	32.00	17.88
Akad Sitorus	1.28	1.28	22.00	17.19
	0.45	0.45	7.00	15.56
	0.08	0.08	1.00	12.50
	1.34	1.34	23.00	17.16
Ali Sarpati Sinaga	1.01	1.01	15.00	14.85

	0.99	0.99	17.00	17.17
	1.32	1.32	23.00	17.42
	1.05	1.05	14.00	13.33
	0.56	0.56	12.00	21.43
Henny	1.99	1.99	35.00	17.59
M Kamilan	0.24	0.24	4.00	16.67
	0.22	0.22	4.00	18.18
	0.20	0.20	4.00	20.00
Mardiana	0.58	0.58	13.00	22.41
Muhammad Alfhissha Sinaga	0.41	0.41	8.00	19.51
Nano	0.36	0.36	6.00	16.67
Ngademan	0.49	0.49	10.00	20.41
	0.98	0.98	15.00	15.31
Resman Purba	1.00	1.00	21.00	21.00
Supriadi	0.36	0.36	6.00	16.67
	0.32	0.32	6.00	18.75
	0.36	0.36	6.00	16.67
Suratmin	0.72	0.72	12.00	16.67
Suratno	0.60	0.60	10.00	16.67
Wagino	1.00	1.00	20.00	20.00
	1.00	1.00	20.00	20.00
B. Sirait	0.16	0.16	2.00	12.50
Berliana Br. Damanik	0.56	0.56	9.00	16.07
	1.30	1.30	23.00	17.69
Darman	0.92	0.92	14.00	15.22
	0.40	0.40	7.00	17.50
	0.25	0.25	4.00	16.00
Delima Manurung	1.10	1.10	17.00	15.45
Elvina Manurung	2.00	2.00	34.00	17.00
	1.00	1.00	17.00	17.00
Hendra Situmorang	7.77	7.77	128.00	16.47
Hendra Wahyudi	0.80	0.80	12.00	15.00
	0.44	0.44	7.00	15.91
	0.29	0.29	5.00	17.24
	0.16	0.16	3.00	18.75
Hotman Damanik	1.20	1.20	20.00	16.67
	2.00	2.00	41.00	20.50
	1.92	1.92	31.00	16.15
Irwansyah	6.04	6.04	111.00	18.38
Jamel Hutabalan	1.15	1.15	21.00	18.26
Jamroni	1.15	1.15	21.00	18.26
Julpri Sialagan	2.75	2.75	29.00	10.55
Junaidi	0.43	0.43	8.00	18.60
	0.32	0.32	6.00	18.75
	0.32	0.32	6.00	18.75
Kisruk Wibowo	1.00	1.00	17.00	17.00
	1.00	1.00	17.00	17.00

	0.80	0.80	3.00	3.75
	2.00	2.00	38.00	19.00
	0.50	0.50	10.00	20.00
	0.50	0.50	7.00	14.00
	0.44	0.44	7.00	15.91
Lianto Simbolon	0.50	0.50	10.00	20.00
Maruli Ambarita	1.00	1.00	20.00	20.00
Masniar Siburian	1.00	1.00	20.00	20.00
	0.56	0.56	10.00	17.86
Minton Manurung	3.00	3.00	40.00	13.33
	1.00	1.00	19.00	19.00
Monang Damanik	1.00	1.00	21.00	21.00
Nasem	0.72	0.72	13.00	18.06
	0.34	0.34	4.00	11.76
	0.24	0.24	4.00	16.67
	0.80	0.80	10.00	12.50
Pardi Sirait	0.04	0.04	1.00	25.00
Ponimah Manurung	0.50	0.50	6.00	12.00
	0.12	0.12	2.00	16.67
Rianto Ambarita	1.05	1.05	21.00	20.00
Rohamin Sinaga	0.50	0.50	10.00	20.00
Saidi Sinaga	1.00	1.00	18.00	18.00
Solihin	0.20	0.20	4.00	20.00
	0.32	0.32	6.00	18.75
	0.68	0.68	13.00	19.12
Sri Elisa	1.00	1.00	17.00	17.00
	0.74	0.74	13.00	17.57
	0.88	0.88	13.00	14.77
	0.59	0.59	10.00	16.95
Sugiar	0.80	0.80	10.00	12.50
	0.60	0.60	10.00	16.67
	0.60	0.60	10.00	16.67
Sunardi	1.00	1.00	14.00	14.00
	0.60	0.60	10.00	16.67
Tunggak	0.88	0.88	12.00	13.64
	0.64	0.64	6.00	9.38
Zulkifli Manurung	0.56	0.56	12.00	21.43
Temu	0.44	0.44	7.00	15.91
	0.16	0.16	2.00	12.50
	0.12	0.12	2.00	16.67
Sadikun	0.56	0.56	4.00	7.14
Sunardi	1.00	1.00	20.00	20.00
Selamat Handoko	1.00	1.00	20.00	20.00
Sapar	0.82	0.82	12.00	14.63
	0.09	0.09	1.00	11.11
Ade Setiawan	0.84	0.84	13.00	15.48
Ahmad Rifai Sarumpaet	4.80	4.80	80.00	16.67

Amirudin	1.50	1.50	32.00	21.33
	2.00	2.00	41.00	20.50
Amran Sinaga	4.50	4.50	80.00	17.78
Anum Sitorus	7.60	7.60	127.00	16.71
Azhar	1.58	1.58	26.00	16.46
	1.58	1.58	26.00	16.46
	1.00	1.00	19.00	19.00
	0.68	0.68	11.00	16.18
Azis Sinaga	1.50	1.50	26.00	17.33
	3.50	3.50	61.00	17.43
Boimen	1.58	1.58	26.00	16.46
	1.58	1.58	26.00	16.46
	0.70	0.70	11.00	15.71
Dumoli Simanjuntak	1.25	1.25	21.00	16.80
	1.25	1.25	21.00	16.80
Efendi Saragih	2.00	2.00	34.00	17.00
Gunawan	2.00	2.00	31.00	15.50
Herman	0.70	0.70	11.00	15.71
Jumiran	0.14	0.14	3.00	21.43
Kamidi	1.50	1.50	25.00	16.67
	1.50	1.50	23.00	15.33
	1.50	1.50	21.00	14.00
Kurniatik	2.00	2.00	39.00	19.50
Lusinan	0.76	0.76	8.00	10.53
	0.76	0.76	8.00	10.53
	1.53	1.53	22.00	14.38
Maranggi P Sihombing	1.00	1.00	21.00	21.00
	1.00	1.00	21.00	21.00
	3.20	3.20	42.00	13.13
Mar'i Sulaiman Sihombing	4.50	4.50	84.00	18.67
Marsono Sinaga	1.83	1.83	25.00	13.66
	1.80	1.80	32.00	17.78
Muadi Sitorus	3.20	3.20	43.00	13.44
	3.20	3.20	42.00	13.13
	7.90	7.90	70.00	8.86
Nuria Br Sinaga	2.40	2.40	42.00	17.50
	1.25	1.25	27.00	21.60
	1.00	1.00	21.00	21.00
Polman Sinaga	1.25	1.25	25.00	20.00
	1.25	1.25	25.00	20.00
	1.00	1.00	17.00	17.00
	1.00	1.00	17.00	17.00
	1.00	1.00	17.00	17.00
	1.00	1.00	17.00	17.00
	1.00	1.00	17.00	17.00
	1.00	1.00	17.00	17.00

Ponidi	3.00	3.00	42.00	14.00
	1.50	1.50	33.00	22.00
Rudi Suito Ginting	1.00	1.00	17.00	17.00
	2.00	2.00	38.00	19.00
	1.50	1.50	27.00	18.00
	1.00	1.00	17.00	17.00
	1.00	1.00	17.00	17.00
Sarno	1.00	1.00	17.00	17.00
	0.89	0.89	14.00	15.73
	0.94	0.94	16.00	17.02
Sarwedi Silalahi	1.58	1.58	31.00	19.62
	1.58	1.58	31.00	19.62
	7.00	7.00	109.00	15.57
Selamat Ginting	1.58	1.58	37.00	23.42
	1.58	1.58	38.00	24.05
	1.58	1.58	37.00	23.42
	1.58	1.58	38.00	24.05
	1.50	1.50	35.00	23.33
	1.50	1.50	36.00	24.00
Siti Hamidah Sinaga	6.00	6.00	109.00	18.17
Suherman	1.50	1.50	32.00	21.33
	1.50	1.50	32.00	21.33
	1.50	1.50	33.00	22.00
Sukri	1.32	1.32	21.00	15.91
	2.50	2.50	42.00	16.80
	2.56	2.56	42.00	16.41
	7.00	7.00	109.00	15.57
	1.58	1.58	33.00	20.89
	2.46	2.46	42.00	17.07
	2.45	2.45	42.00	17.14
Supini Damanik	1.58	1.58	32.00	20.25
	0.82	0.82	14.00	17.07
	1.00	1.00	14.00	14.00
Supianto Sitorus	3.00	3.00	49.00	16.33
	3.00	3.00	49.00	16.33
	1.50	1.50	33.00	22.00
	1.50	1.50	33.00	22.00
	1.50	1.50	33.00	22.00
	2.00	2.00	33.00	16.50
Susanto	0.16	0.16	2.00	12.50
	0.28	0.28	5.00	17.86
	0.16	0.16	2.00	12.50
Suyetno	0.72	0.72	8.00	11.11
	0.64	0.64	10.00	15.63
	0.72	0.72	10.00	13.89
Wagino	1.50	1.50	32.00	21.33
	1.50	1.50	32.00	21.33

	TOTAL	480.12	480.12	8,232.00	17.15		
	<i>*Projected FFB production for 12 months of certificate (02 March 2021 to 01 March 2022)</i>						
1.8.4	Estimate Certified Palm Product Claim						
	FFB	CPO		CSPKO		CSPKE	
	Processed (tonnes/year)	Out put (tonnes)	Extraction (%)	Out put (tonnes)	Extraction (%)	Out put (tonnes)	Extraction (%)
	3,293	659	20.00	74	2.25	91	2.75
	<i>*Extraction of CSPO, CSPKO and CSPKE from document "A seller Guide to RSPO Credits. **Projected CSPO, CSPKO & CSPKE production for 12 months of certificate 02 March 2021 to 01 March 2022). ***FFB processed is 40% from production that can be claim as certified *Extraction of CSPO, CSPKO and CSPKE from document "A seller Guide to RSPO Credits.</i>						
1.9	Other Certifications						
	Others			-			

2.0	ASSESSMENT PROCESS
2.1	Assessment Team
Eligibility	<p>1. Trismadi Nurbayuto (Lead Auditor). Indonesian Citizen. Diploma of Forest Management from Forestry Faculty; Associate Degree of Economic from Economic and Management. He has experienced as field assistant on oil palm plantation year of 2008. Therefore he has experienced as HCV and SEIA Assessor on 2010-2013. He has been followed HCV identification and management training; ISO training (9001;14001; 22000); ISPO Lead Auditor's training; Safety Expert; RSPO Lead Auditor's; OHS Auditors by Government Regulation No 50 year of 2012; SA 8000 and RSPO Next. He has been conducted audit on ISPO and RSPO scheme since year of 2013 as an Auditor on several aspect as environment, OHS, Legality, Best Management Practices, Social, Worker Welfare, Conflict Resolutions, Long term Business Plan and Supply Chain on Palm Oil Mill. During this assessment verified Legality and Social aspect.</p> <p>2. Brigitta Prita. Citizen of Indonesia. Bachelor of Forestry, Department of Forest Resources Conservation and Ecotourism. She had attended Training ISPO by Commission ISPO on June 2013, Training ISO 9001:2008 Quality Management System on January 2014, In House Training 17021 and 17065 management system and Product Quality, Training High Conservation Value by IPB on September 2015, In House Training HCV on August 2016, In House Training Roundtable Sustainable Palm Oil on January 2014; In House Training ISO 14000:2004 Environmental Management System; & SCCS Training from BM Trada. She has been audit experience ISPO & RSPO since April 2013 in the environmental, conservation, waste management and worker welfare aspects. During this assessment verified ICS.</p>
2.2	Assessment Methodology, Assessment Process and Locations of Assessment
2.2.1	Figure of person days to implement assessment
Eligibility	<p><i>Number of auditors : 2 auditor</i></p> <p><i>Number of days for Eligibility at site : 2.5 days</i></p> <p><i>Number of working days for Eligibility at site : 5 Working days</i></p>
2.2.2	Assessment Process
Eligibility	<p>The assessment was conducted by measuring the sufficiency of implementation with the consistency done by the Koperasi Produsen Mandiri Gaharu Seratus Bosar Maligas to the requirements of RSPO Independent Smallholder Standard, 6 November 2019 and RSPO Certification System for Principles and Criteria, 14 June 2017.</p> <p>The assessment was conducted in three methods: (1) document review, aiming to observe the sufficiency of types or substances from required documents; (2) <i>interview</i>, aiming to obtain more detailed information and cross check the information; and (3) field observation, aiming to observe directly the sufficiency of implementation on site.</p> <p>Some opportunities for improvement of the results Eligibility delivered by the MUTU auditor to the management unit and the results are the subject will be verified at the next assessment phase (MS-A). All information obtained was recorded in Check List of PT Mutuagung Lestari (MUTU) and part of Eligibility.</p> <p>During opening and closing meeting attended by 15 members and ICS, auditor team were stay on Pematang Siantar City (\pm 1 hours from the site).</p> <p>The assessment program please find Appendix 2.</p>
2.2.3	Locations of Assessment

Eligibility	<p>The method of sampling location is carried out by the Auditor team based on:</p> <ul style="list-style-type: none"> The selected location represents each operational area (using the formula $\{(0.8\sqrt{y}) \times z\}$ representing each operational area. Based on number of smallholders, the sample for this assessment are 18 smallholders with high risk. Consideration of issues arising from the results of document review and stakeholder consultations which are fundamental and crucial. <p>The locations visited are presented in full as follows:</p> <ol style="list-style-type: none"> ID number GSBM.03.002 (Subur Jaya Farmers Group) ID number GSBM.03.010 (Mekar Farmers Group) ID number GSBM.03.024 (Harapan Farmers Group) ID number GSBM.03.065 (Bungaran Farmers Group) ID number GSBM.03.233 (Adil Sejahtera Farmers Group) ID number GSBM.03.241 (Adil Sejahtera Farmers Group) ID number GSBM.03.249 (Adil Sejahtera Farmers Group) ID number GSBM.03.262 (Adil Sejahtera Farmers Group) ID number GSBM.03.285 (Adil Sejahtera Farmers Group) ID number GSBM.03.311 (Adil Sejahtera Farmers Group) ID number GSBM.03.316 (Adil Sejahtera Farmers Group) ID number GSBM.03.342 (Adil Sejahtera Farmers Group) ID number GSBM.03.346 (Adil Sejahtera Farmers Group) ID number GSBM.03.354 (Mawar Farmers Group) ID number GSBM.03.355 (Mawar Farmers Group) ID number GSBM.03.366 (Naga Mas Farmers Group) ID number GSBM.03.527 (Bersama Farmers Group) ID number GSBM.03.541 (Mawar Farmers Group)
2.3	Stakeholder Consultation and Stakeholders Contacted
2.3.1	Summary of stakeholder consultation process.
Eligibility	<p>Summary of stakeholder consultation process</p> <p>Consultation of stakeholders for Koperasi Produsen Mandiri Gaharu Seratus Bosar Maligas was held by:</p> <ul style="list-style-type: none"> Public Notification at RSPO website www.rspo.org at 2 November 2020. Public Notification at Mutuagung website www.mutucertification.com at 2 November 2020. Public consultation meeting with communities including previous land owner at 15 December 2020. Public consultation meeting with farmers at 16 December 2020. Public consultation meeting with NGO (AMAN, Sawit watch, WALHI, WWF) at 16 December 2020.
2.3.2	Stakeholder contacted
Eligibility	<i>Please find appendix 1</i>
2.4	Determining Next Assessment
Eligibility	The next visit MS-A will be conducted maximum 24 months after date of certificate issued.

3.0 ASSESSMENT FINDINGS

3.1 Summary of Assessment Report of the RSPO Certification

MUTUAGUNG LESTARI has conducted an assessment of Koperasi Produsen Mandiri Gaharu Seratus Bosar Maligas operation consisting of *two hundred and ten (210)* smallholders.

During the assessment, there were *three (3)* Nonconformities were assigned against Major/ Critical Compliance Indicator's ICS B.1.2; ICS C.1.1; ICS D.1.1; and *two (2)* opportunities for improvement were identified.

Further explanation of the non-conformities raised and corrective actions taken by the cooperative are provided in section 3.5. The cooperative has already prepared and implemented the corrective actions that had been reviewed and accepted by Auditors in form of documentation evidences e.g. (*document record/photographic/etc...*). Those corrective actions taken that consist of three (3) Major/ Critical non-conformities had been closed out shall be verified during next assessment.

MUTUAGUNG LESTARI found that Koperasi Produsen Mandiri Gaharu Seratus Bosar Maligas complied with the requirements of *RSPO Independent Smallholder Standard, 6 November 2019 and RSPO Certification System for Principles and Criteria, 14 June 2017*.

Therefore MUTUAGUNG LESTARI Recommends RSPO Certification of compliance is *Issued*.

Ref Std.	VERIFICATION RESULT of MUTU-Certification
A – ICS: Group Entity and Group Management Requirements	
A.1 The Group demonstrates that they are legally formed	
<p>A.1.1 & A.1.2 The appointment declaration to be involved in RSPO Independent Smallholders Standard for <i>KPM - GSBM</i> Simalungun District of Bosar Maligas - North Sumatra, which was signed by the cooperative chairman dated November 15, 2019. The group manager is Cooperative Manager. There is a management structure ICS by 2019-2024 period was approved on November 15, 2019 consist of, Chairman, approval committee, data collection & documentation PIC, conservation assessment PIC, internal audit and training PIC. here is documentation and a list of attendance for the appointment declaration.</p> <p>Decree of the Minister of Law and Human Rights of the Indonesia Republic Number AHU-0001994.AH.01.26.year 2020 concerning the establishment ratification of the legal entity <i>KPM Gaharu Seratus Boligas</i> dated February 3, 2020.</p> <p>The certificate of establishment of the <i>KPM - GSBM</i>, certificate No.4, dated January 10, 2020 by Wira Susanty Manalu, SH, M.Kn. and Decree of Notary for Cooperative certificate dated December 15, 2014 (Number 1539 / Dep.I / XII / 2014) on behalf of Mr. Ahmad Safri (Chairman of the Cooperative), Mr. Ade Fachrizal (Secretary) and Mrs. Neny Megy Sary (Treasurer). The above document is kept at the cooperative office by the Group Manager (Mr. Ahmad Safri).</p>	
<p>A.1.3. The group internal control system has policies and procedures for operational management such as:</p> <ul style="list-style-type: none"> - The SOP for Admission of Members no 04 / DOK / SOP / KPM-GSBM / 2019 dated on November 25, 2019. - The SOP for internal audit implementation number 05 / SOP-KPM-GSBM / I / 2020 dated on January 10, 2020. - The SOP regarding the internal inspection work program No: SOP / ICS-KPM-GSBM / III / 2020 dated on November 25, 2019. 	
<p>A.1.4 The results of interviews with 18 farmers at Adil Makmur village, Sei Torop village, Pengkolan Sub-village, and Bosar Maligas Sub-District, It is known that the farmer has signed a statement letter and requirements as a member who will participate in the RSPO</p>	

Independent Smallholders Standard For example: statement letter of compliance of independent smallholders of cooperative members with the RSPO principles, criteria and indicators dated March 20, 2020.		
	Status: Comply	
A.2 The Group Manager is responsible for managing the Group for certification		
<p>A.2.1, A.2.2 & A.2.3.</p> <p>There is a training plan for independent smallholders which is held once a year. The training plan is prepared by the cooperative management and approved by the Group Manager. The training topics are accordance with Principles, Criteria and Indicators in the RSPO Independent Smallholder Standard. Example: BMP training in February - April 2021; RSPO P & C training; HCV training; OHS training; ICS internal audit; Improved ICS audit, the addition for new members, arrangement of <i>STDB</i> and <i>SPPL</i> in August 2021, mapping of land for new members in May 2021 and others.</p> <p>The results of interviews with 18 farmers at Adil Makmur village, Sei Torop village, Pengkolan Sub-village, and Bosar Maligas Sub-District, it is known that there has been training on plantation management such as harvesting techniques, chemical applications (fertilizers and pesticides), socialization of RSPO and others. An understanding of the RISS standard and membership was conveyed when farmers registered to become members of the cooperative. In addition, there is a statement letter for participation as an RSPO Independent Smallholder. Beside that, there is documentation of training dated on November 11 & 19, 2019; August 29, 2019, September 4, 2019 and February 21, 2020.</p>		
	Status: Comply	
B – ICS: Policies and Management		
B.1 The group Internal Control System contains documented policies and procedures for operational management.		
<p>B.1.1.</p> <p>The group internal control system has policies and procedures for operational management such as:</p> <ul style="list-style-type: none"> - The SOP for warning and sanctions for members number 04 / SOP-KPM-GSBM / I / 2020 dated on January 7, 2020. - The SOP out into the member with number 03 / SOP-KPM-GSBM / I / 2020 dated on January 5, 2020. - The SOP for internal audit implementation number 05 / SOP-KPM-GSBM / I / 2020 dated on January 10, 2020. - The SOP regarding the internal inspection work program No: SOP / ICS-KPM-GSBM / III / 2020 dated on November 25, 2019. <p>There is a management structure ICS especially for internal audit by 2019-2024 period was approved on November 15, 2019.</p> <p>B.1.2</p> <p>Evidence observed</p> <p>The cooperative showed documents such as:</p> <ul style="list-style-type: none"> • Legal documents example photocopies of land surrender certificates, <i>SKT</i> or <i>SHM</i> • A statement letter as a member of the farmer who will participate in the RSPO Independent Smallholders Standard signed by the farmer members. • Data on members of cooperative date on August 24, 2020 reported to the RSPO secretariat are 232 land owners, 545 <i>persil</i> with total area 526.31 Ha. Based on interview with ICS revealed that there was a change in the number of members (leaving and entering) since that date until the audit was carried out. • The data on the area of cooperative members showed during the audit were 210 land owners, 480 <i>persil</i> with total area 474.30 ha. However, the data has not been updated regarding all land certificate numbers, production 12 months prior to the audit activity, productivity (tonnes / ha / year) and planting year information for each <i>persil</i>. <p>Non-Conformance Description:</p> <p>The cooperative has not been able to show basic information such as: address (village & sub-district), certificate number, production 12 months before the audit activity, productivity (tonnes / ha / year) and area per year of planting of each <i>persil</i>. This is nonconformity</p>		

No.2020.01.		
B.1.2.	Status: Non Conformity number 2020.01 with Critical category	
C – ICS: Group business planning		
C.1 The group has a group Business Plan prepared with the participation and contributions of group members.		
<p>C.1.1 Evidence observed : Based on interview with ICS, it was explained expansion of the certification area will be conducting in 2021, there is a plan for the <i>ICS KPM-GSB</i> work program regarding plans to expand the scope of certification which will be carried out in June-August 2021.</p> <p>Non-Conformance Description: The cooperative has not been able to show an annual group business plan that includes estimates of production and income based on historical records. This is nonconformity No.2020.02.</p>		
C.1.1	Status: Non Conformity number 2020.02 with Critical category	
C.2 The ICS of the group is integrated with the Group's Management Plan.		
<p>C.2.1 The cooperative shows training programs for 2020 and 2021 periods such as:</p> <ol style="list-style-type: none"> 1. BMP training in February - April 2021. 2. RSPO P & C training 3. HCV training 4. OHS training 5. ICS internal audit 6. Improved ICS audit 7. External audit by the Auditor team. <p>A decree regarding supply chain model <i>KPM-GSB</i> RSPO certification approved by the Group Manager Decides on November 25, 2019. The certification chain model that will be used by smallholder is a mass balance models (mass balance). An ICS have responsible to implementing all of training programs. Therefore based on interview with ICS Secretary been understood about the training material.</p>		
	Status: Comply	
D – ICS: Group Trading System for Certified Volumes		
D.1 The group has a procedure and system in place for the tracking of FFB.		
<p>D.1.1 Evidence observed:</p> <ul style="list-style-type: none"> • Based on interviews with 18 farmers in Adil Makmur Village, Sei Torop Village, Pengkolan Sub-Village, and Bosar Maligas Village show that the sale of FFB is directly carried out by farmers and sold to agents. • FFB payment notes are kept by each farmer but there is information that 2 farmers do not keep the payment receipt. • There is example of a FFB payment note with the initials Mr. S dated December 3, 2020, is 410 kg (1 kg as much as IDR 1,660,-) so the total paid is IDR 680,600 (CV New Putra Naga agent). <p>Non-Conformance Description: The cooperative has not been able to show evidence that there is a record sheet of annual production and sales of certified FFB volume which includes traceability of producers and / or sellers. This is nonconformity No.2020.03.</p>		

D.1.1	Status: Non Conformity number 2020.03 with Critical category.	
D.2 The group documents and implements a system for the tracking of FFB.		
D.2.1 Not applicable.		
	Status: Not applicable.	
D.3 The group has a procedure and system for premium distribution.		
D.3.1. Standard operational procedure for the distribution of credit funds with the number 06 / SOP-KPM-GSBM / III / 2020 dated November 25, 2019 in the certification process, there will be profits that come from credit funds selling RSPO certification such as: <ul style="list-style-type: none"> - 30% of farmers share of funds. - 30% of audit reserve funds. - 30% of ICS operational funds. - 8% of operational funds for certification. - 2% social funds <p>There is a appointment decision No: 05 / ICS / KPM-GBSM /XI/ 2019 regarding procedure for receiving credit sales funds and managing credit sales funds was approved by the Group Manager on November 25, 2019, it was agreed that the RSPO certificate or credit sales system through Palm Trace would be the responsibility of the ICS Manager. This decision making has involved 20 group members. Based on document verification and interview with several members sighted that the ICS has been socialized that procedure and decree to all members on February 21, 2020.</p> <p>This will be verified at the miles stone A stage.</p>		
	Status: Comply	

Ref Std.	VERIFICATION RESULT of MUTU-Certification	
PRINCIPLE 1: OPTIMISE PRODUCTIVITY, EFFICIENCY, POSITIVE IMPACTS AND RESILIENCE		
1.1 Smallholders establish a legal entity which has organisational capacity to comply with the RSPO Independent Smallholder Standard.		
<p>The group has formed a legal entity which has organizational capacity to comply with the RSPO Independent Plantation Standard, such as:</p> <ol style="list-style-type: none"> 1. The Deed of Establishment of by Wira Susanty Manalu, SH. M.Kn with number 04 dated 10 January 2020. 2. Law and Human Right Minister Decree Letter with number AHU-0001994.AH.01.26 year of 2020 dated 3 February 2020. <p>The certification unit shows a Letter of Willingness to Participate in RSPO Certification which was signed by 210 cooperative members on March 23, 2020. For example: initial RSD, MRD, SPN. The following points:</p> <ol style="list-style-type: none"> 1. Understand the importance of sustainable production. 2. They will join the cooperative and following the RSPO Independent Smallholders standard with the relevant Principles and Criteria and Indicators. 3. They will provide information to the group manager (for example: location coordinates, information on land ownership, replanting plans, any land disputes, etc). 4. Commit to consist of 18 commitments points according to attachment 2. For example: not clearing land from indigenous peoples, not carrying out new planting or expanding existing plantations in primary forest, HCV, HCS, riverbanks, steep slopes or such as regulated in the National Interpretation, commitments not to use pesticides in stages categorized by WHO IA, IB and Stockholm/Rotterdam conventions, etc. <p>The cooperative also showing administration of members, for example: ID card, Family Card, cooperative register form, statement letter of compliance of independent smallholders of cooperative members with RSPO P&C, harvesting record period of 2019 – 2020, manuring record, pruning record, pesticide using record, letter of indemnity handover, statement letter, land measurement report, and land sketch.</p> <p>Based on the results of interviews with the Group Manager/ICS, it was explained that at this time there was no submission of STDB and SPPL to the relevant agency, beside that the communication with the relevant agencies was carried out in October 2019. Then it is planned that the management will be carried out in 2021. However, the cooperative is considering making STDB and SPPL arrangements before the next phase of the RSPO assessment. (OFI).</p>		
	Status: Comply	
1.2 Smallholders have capacity to effectively manage their farm.		
Not Applicable.		
	Status: Not applicable.	
1.3 Smallholders implement good agricultural practices (GAP) on their farms.		
<p>The certification unit shows a Letter of Willingness to Participate in RSPO Certification which was signed by 210 cooperative members on March 23, 2020. For example: initial RSD, MRD, SPN. The following points:</p> <ol style="list-style-type: none"> 1. Understand the importance of sustainable production. 2. They will join the cooperative and following the RSPO Independent Smallholders standard with the relevant Principles and Criteria and Indicators. 3. They will provide information to the group manager (for example: location coordinates, information on land ownership, replanting plans, any land disputes, etc). 4. Commit to consist of 18 commitments points according to attachment 2. For example: not clearing land from indigenous peoples, not carrying out new planting or expanding existing plantations in primary forest, HCV, HCS, riverbanks, steep slopes or such 		

as regulated in the National Interpretation, commitments not to use pesticides in stages categorized by WHO IA, IB and Stockholm/Rotterdam conventions, etc.

Status: Comply

PRINCIPLE 2: ENSURE LEGALITY, RESPECT FOR LAND RIGHTS AND COMMUNITY WELLBEING

2.1

Smallholders have legal or customary rights to use the land in accordance with national and local laws and customary practices.

The cooperative can show the name of members, the legality of land ownership and land certificate, geographic coordinate and a location map of 210 members with 480 parcels and area of 480.12 hectare. The cooperative showing administration of members, for example: ID card, Family Card, cooperative register form, statement letter of compliance of independent smallholders of cooperative members with RSPO P&C, harvesting record period of 2019 – 2020, manuring record, pruning record, pesticide using record, letter of indemnity handover, statement letter, land measurement report, and land sketch. Based on interview with group manager sighted that he was verified each of group members document, beside that the ICS has been also conducted participatory mapping with all group manager member to verified the oil palm plantation locations. The participatory mapping were conducted with facilitator from NGO.

Status: Comply

2.2

Smallholders have not acquired lands from indigenous peoples, local communities or other users without their free, prior and informed consent, based on a simplified FPIC approach.

Based on document verification known that each members can prove that he has obtained that land acquired by Free, Prior, Informed, Consent. For example:

1. Land with *Surat Keterangan (SKT)* complete with a letter of submission of compensation rights, a statement letter, an official report on land measurement and a land sketch.
2. Land with *Sertipikat Hak Milik (SHM)*, it is completed with a situation map of the plot of land as measured by the National Land Agency.

Based on field observation and interview with 18 members, it's known that they obtained land from several sources, for example: the buying and selling process, inherited land from their families. In addition, it was explained that so far there have never been land disputes or claims with nearby land owners.

Status: Comply

2.3

The right to use the land is not disputed by indigenous peoples, local communities or other users.

Based on interview with Head of *Lingkungan Tengah, Lingkungan Kulon, Lingkungan Teretak, Lingkungan Rendahan, Lingkungan Gunung Perak (Kelurahan Bosar Maligas)*. Also 18 independent smallholders member known that until now there are no land conflict between other members or parties. This was also reinforced by the results of observation by auditors in the field of 17 locations.

Status: Comply

2.4

Smallholder plots are located outside of areas classified as national parks or protected areas, as defined by national, regional or local law or as specified in National Interpretations.

The cooperative can show an overlay map of Gaharu members (480 parcels) with the Forest Area Map of North Sumatera Province with a scale of 1:23,270; from the map shown known that the land on other use area (APL).

Status: Comply

2.5

For new plantings, smallholders do not clear or acquire any land without obtaining the free, prior and informed consent (FPIC), of local communities and indigenous people, based on a simplified FPIC approach.

Do any smallholders within the group have plans for new plantings of oil palm? If none, SKIP		
Until the eligibility assessment and interview with the Gaharu Cooperative management and 18 members, conveying information that there is no plan to new development area.		
	Status: Comply	
PRINCIPLE #3 Respect human rights, including workers', rights and conditions		
3.1		
There is no use of forced labour.		
<p>The certification unit shows a Letter of Willingness to Participate in RSPO Certification which was signed by 210 cooperative members on March 23, 2020. For example: initial RSD, MRD, SPN. The following points:</p> <ol style="list-style-type: none"> 1. Understand the importance of sustainable production. 2. They will join the cooperative and following the RSPO Independent Smallholders standard with the relevant Principles and Criteria and Indicators. 3. They will provide information to the group manager (for example: location coordinates, information on land ownership, replanting plans, any land disputes, etc). 4. Commit to consist of 18 commitments points according to attachment 2. For example: not clearing land from indigenous peoples, not carrying out new planting or expanding existing plantations in primary forest, HCV, HCS, riverbanks, steep slopes or such as regulated in the National Interpretation, commitments not to use pesticides in stages categorized by WHO IA, IB and Stockholm/Rotterdam conventions, etc. <p>The commitment not to practice forced labor is stated in point D.3. Based on interview with 18 member and field observation to the sighted that all members committed not to practice forced labor. Usually they pay harvesters with wages range from IDR 120,000/ton till IDR 150,000/ton.</p>		
	Status: Comply	
3.2		
Children are not employed or exploited. Work by children is acceptable on family farms, under adult supervision and when not interfering with education programmes. Children are not exposed to hazardous working conditions.		
<p>The commitment not to practice child labor is stated in point D.8. Based on interview with 18 member and field observation to the sighted that all members committed not to practice child labor, compliance with the minimum age workers as defined by law, not exposing children to hazardous working conditions. Beside that the ICS also been communicated to all members about this commitment including issues providing adult supervision of young workers on the farm and ensuring the practice of children's rights to education is unrestricted and respected dated February 21, 2020.</p>		
	Status: Comply	
3.3		
Workers' pay complies with minimum legal requirements, mandatory industry standards as defined by national law or collective bargaining, whichever takes priority in local regulations.		
Are there workers on the farm? If no, SKIP		
<p>The certification unit shows a Letter of Willingness to Participate in RSPO Certification which was signed by 210 cooperative members on March 23, 2020. For example: initial RSD, MRD, SPN. The following points:</p> <ol style="list-style-type: none"> 1. Understand the importance of sustainable production. 2. They will join the cooperative and following the RSPO Independent Smallholders standard with the relevant Principles and Criteria and Indicators. 3. They will provide information to the group manager (for example: location coordinates, information on land ownership, replanting plans, any land disputes, etc). 4. Commit to consist of 18 commitments points according to attachment 2. For example: not clearing land from indigenous peoples, not carrying out new planting or expanding existing plantations in primary forest, HCV, HCS, riverbanks, steep slopes or such as regulated in the National Interpretation, commitments not to use pesticides in stages categorized by WHO IA, IB and Stockholm/Rotterdam conventions, etc. 		

Commitment to pay workers with minimum requirements in accordance with the applicable rules in point D.4. Based on interview with 18 member and field observation to the sighted that they pay harvesters with wages range from IDR 120,000/ton till IDR 150,000/ton.

Status: Comply

3.4

Workers understand their rights and freedom to file a complaint to group manager or relevant third parties, including RSPO.

Are there workers on the farm? If no, SKIP

The certification unit shows a Letter of Willingness to Participate in RSPO Certification which was signed by 210 cooperative members on March 23, 2020. For example: initial RSD, MRD, SPN. The following points:

1. Understand the importance of sustainable production.
2. They will join the cooperative and following the RSPO Independent Smallholders standard with the relevant Principles and Criteria and Indicators.
3. They will provide information to the group manager (for example: location coordinates, information on land ownership, replanting plans, any land disputes, etc).
4. Commit to consist of 18 commitments points according to attachment 2. For example: not clearing land from indigenous peoples, not carrying out new planting or expanding existing plantations in primary forest, HCV, HCS, riverbanks, steep slopes or such as regulated in the National Interpretation, commitments not to use pesticides in stages categorized by WHO IA, IB and Stockholm/Rotterdam conventions, etc.

The commitment to respect for submitting complaints is found in the point D.5. Based on interview result with 18 members, it's known that so far there have never been complaints from harvesters. While for upkeep activity each of members conducted by own self.

Status: Comply

3.5

Working conditions and facilities are safe and meet minimum legal requirements.

The commitment to providing safe working conditions and facilities is contained in the point D.6. statement letter. Based on interview result with 18 members, it's known that they were committed to implementing that point.

Status: Comply

3.6

There is no discrimination, harassment, or abuse on the farm

Are there workers on the farm? If no, SKIP

The commitment to no discrimination, harassment or violence in the estate is contained in the point D.7. statement letter. Based on interview result with 18 members, it's known that they were committed to implementing that point.

Status: Comply

PRINCIPLE #4 Protect, conserve and enhance ecosystems and environment

4.1

High Conservation Values (HCVs) on the smallholder plot or within the managed area and High Carbon Stock (HCS) forests identified after November 2019 using the simplified combined HCV-HCS approach are managed to ensure that they are maintained and/or enhanced.

The certification unit shows a Letter of Willingness to Participate in RSPO Certification which was signed by 210 cooperative members on March 23, 2020. For example: initial RSD, MRD, SPN. The following points:

1. Understand the importance of sustainable production.
2. They will join the cooperative and following the RSPO Independent Smallholders standard with the relevant Principles and Criteria and Indicators.
3. They will provide information to the group manager (for example: location coordinates, information on land ownership, replanting plans, any land disputes, etc).

<p>4. Commit to consist of 18 commitments points according to attachment 2. For example: not clearing land from indigenous peoples, not carrying out new planting or expanding existing plantations in primary forest, HCV, HCS, riverbanks, steep slopes or such as regulated in the National Interpretation, commitments not to use pesticides in stages categorized by WHO IA, IB and Stockholm/Rotterdam conventions, etc.</p> <p>The commitment to protect HCV and HCS is provided in the point D.12. Based on interview results with 18 members, its known that there are three members whose borders with the river. They have understood about the commitment to protect the bufferzone by not applying fertilizers and spraying. In addition, there were also two members whose part of the land was more than 25 degrees. They are committed not to replant the areas at this slope.</p>		<p>Status: Comply</p>
<p>4.2 Where the existing smallholder plot has been planted and cleared after November 2005 or is on an area identified as HCS forests after November 2019 up to the eligibility period, a remediation and compensation process appropriate for smallholders based on Land Use Change Analysis (LUCA) will be applicable (Reference preamble).</p> <p>Based on interview result with group manager and 18 members, and also field observation result. It's known that the planting year all of members were before November 2005. In addition, some oil palm was replanted using the underplanting or trunk injection method in 2015. That method are used, it caused they still harvest FFB's from old oil palm.</p>		<p>Status: Comply</p>
<p>4.3 New plantings of independent smallholders, since November 2019:</p> <ul style="list-style-type: none"> • Do not replace any HCVs • Do not replace any HCS forests as defined by the simplified combined HCV-HCS approach • Are not on steep slopes (more than 25 degrees or as in NI) • Are not on peat areas of any depth. <p>Do any smallholders within the group have plans for new plantings of oil palm? If none, SKIP</p> <p>Until the eligibility assessment, there are no new development plans. However all members have committed that new development will not carry out new planting in HCV or HCS areas, the area with steep slope (more than 25 degrees or as stipulated in the National Interpretation) or on peat areas as stated in the letter statement of points D.11 till D.15. In addition, based on field observation result sighted that there are no peat areas. The cooperative also has soil type map, there are four types: <i>Dystropepts</i>, <i>Dystrandepts</i>, <i>Haplorthox</i>, and <i>Tropusults</i>.</p>		<p>Status: Comply</p>
<p>4.4 Where smallholder plots exist on peat, subsidence and degradation of peat soils is minimised by use of best management practices.</p> <p>Do any smallholders within the group have existing plots on peat? If no, SKIP</p> <p>based on field observation result sighted that there are no peat areas. The cooperative also has soil type map, there are four types: <i>Dystropepts</i>, <i>Dystrandepts</i>, <i>Haplorthox</i>, and <i>Tropusults</i>.</p>		<p>Status: Comply</p>
<p>4.5 Plots on peat are replanted only on areas with low risk of flooding, saline intrusion as demonstrated by a risk assessment.</p> <p>Do any smallholders within the group have plans for replanting plots that are located on peat? If no, SKIP</p> <p>Until the eligibility assessment, there are no new development plans. However all members have committed that new development will not carry out new planting in HCV or HCS areas, the area with steep slope (more than 25 degrees or as stipulated in the National Interpretation) or on peat areas and only plants in areas with a low risk of flooding and saltwater intrusion as stated in the letter statement of points D.11 till D.15. In addition, based on field observation result sighted that there are no peat areas. The cooperative also has soil type map, there are four types: <i>Dystropepts</i>, <i>Dystrandepts</i>, <i>Haplorthox</i>, and <i>Tropusults</i>.</p>		

	Status: Comply	
4.6 Fire is not used on the oil palm plot for preparing land or for pest control, nor open fire for waste management on the farm.		
Commitment not to use fire in land preparation and pest control, can be found in the point D.16. The cooperative also has added clauses on the prohibition of using fire for waste management. However, it to be considered to re-socializing it to all members. (OFI)		
	Status: Comply	
4.7 Riparian buffer zones are identified and managed to ensure they are maintained and/or enhanced.		
The cooperative has identified the bufferzone area by overlaying the distribution map of members with the Indonesia River Network map with a scale 1:23,720. It's known that there is only one river (Dusan River) on Dusun Pengkolan Village. While, based on field observation to three member location (<i>Lingkungan Tengah, and Dusun Pengkolan Village</i>) sighted that there are land borders with small rivers. Therefore the cooperative had re-identified for small rivers on the certification scope, there are 17 locations adjacent with the small rivers.		
	Status: Comply	
4.8 Pesticides are used in ways that do not endanger health of workers, family, communities or the environment.		
The commitments not to use pesticides in stages categorized by WHO IA, IB and Stockholm/Rotterdam conventions were stated on the point D.18. Based on field observation and interview with 18 members, its known that they have no been use pesticide for upkeep, during last year they conducted manual weeding by lawn mower.		
	Status: Comply	
4.9 The group and smallholders manage pests, diseases, weeds and invasive introduced species using appropriate techniques, including but not limited to Integrated Pest Management (IPM) techniques.		
Not applicable.		
	Status: Not applicable.	

3.2 Conformity Checklist of Certificate and Trademark Use

1.	Evidence of permission or approval certificate and trademark from Certification Body which submitted by Client.
E	Koperasi Produsen Mandiri Gaharu Seratus Bosar Maligas do not use RSPO trademark and CB Logo.
	Status: Comply
2.	Implementation of certificate and trademark used by Client comply with size and type (shape) against Guideline of trademark Use
E	Koperasi Produsen Mandiri Gaharu Seratus Bosar Maligas do not use RSPO trademark and CB Logo.
	Status: Comply
3.	Implementation of Certificate and Trademark is not used on product
E	Koperasi Produsen Mandiri Gaharu Seratus Bosar Maligas do not use RSPO trademark and CB Logo.
	Status: Comply
4.	Controlling of Certificate and Trademark, including withdrawing inappropriate trademark.
E	Koperasi Produsen Mandiri Gaharu Seratus Bosar Maligas do not use RSPO trademark and CB Logo.
	Status: Comply

3.3. Identification of Findings, Corrective Action, Observations, Opportunity for Improvement and Noteworthy Positive Components.

3.3.1 Identification of Findings, Corrective Actions and Observations at Eligibility Assessment

<i>NCR No.</i>	:	2020.01	<i>Issued by</i>	:	Brigitta P.
<i>Date Issued</i>	:	17 December 2020	<i>Time Limit</i>	:	16 December 2021 (12 months)
<i>NC Grade</i>	:	Critical	<i>Date of Closing</i>	:	8 February 2021
<i>Standard Ref. & Requirement</i>	:	B 1.2. Basic information, farm information, production data, legal documentation of group members and signed Smallholder Declarations are available to the group manager.			
Evidence observed: The cooperative showed documents such as:					
<ul style="list-style-type: none">• Legal documents example photocopies of land surrender certificates, <i>SKT</i> or <i>SHM</i>• A statement letter as a member of the farmer who will participate in the RSPO Independent Smallholders Standard signed by the farmer members.• Data on members of cooperative date on August 24, 2020 reported to the RSPO secretariat are 232 land owners, 545 <i>persil</i> with total area 526.31 Ha. Based on interview with ICS revealed that there was a change in the number of members (leaving and entering) since that date until the audit was carried out.• The data on the area of cooperative members showed during the audit were 210 land owners, 480 <i>persil</i> with total area 474.30 ha. However, the data has not been updated regarding all land certificate numbers, production 12 months prior to the audit activity, productivity (tonnes / ha / year) and planting year information for each <i>persil</i>.					
Non-Conformance Description: The cooperative has not been able to show basic information such as: address (village & sub-district), certificate number, production 12 months before the audit activity, productivity (tonnes / ha / year) and area per year of planting of each <i>persil</i> .					
Root Cause Analysis : There is no system built in the ICS to collect documents related to the harvest records of each farmer who is a member of <i>KPM GSBM</i> .					
Correction : ICS produces basic cooperative information such as address (village & sub-district), certificate number, production 12 months prior to the audit activity, productivity (tonnes / ha / year) and area per year of planting for each parcel.					
Corrective Action : ICS will develop and implement SOP for collecting data on certified FFB production.					
Assessor Evaluation and Conclusion : The cooperative shows the SOP for collecting harvest records No / DOK / SOP / KPM-GSBM / 2019 which was approved by the Group Manager on February 3, 2020. These SOP include:					
<ol style="list-style-type: none">1. Independent farmers with potential for certification are required to fill out a harvest record form according to the weigh note.2. The Head of the farmer group supervises the members of the farmer to comply with the rules set by the Group Manager.3. The Head of the farmer group to collect the harvest records and the weigh note belonging to the farmers to be submitted to the ICS group.4. The Head of the farmer group must submit the harvest records and weighing receipts to the ICS members for input no later than 5 days after harvesting.					

5. The Head of the farmer group supervise the operation of the harvest record collection system and communicates it to the ICS team.
6. The Group Manager must inform each certified farmer to socialize the mandatory harvest record collection.

The cooperative shows basic information such as address (village and sub-district), production 12 months prior to the audit activity and annual area planted.

However, after checking the production data, the production data is still too high when compared to the area of each farmer. For example:

- On behalf Ade Prastiono Situmorang (Planted Year 2000) in the period December 2019 until November 2020 production: 29,460 kg (29.46 tons) with an area of 0.89 hectares. So that the annual productivity reaches 33.10 tonnes / ha / year.
- On behalf Eko Joko Syaputro (Planting Year 2003) in the period December 2019 until November 2020 production: 13,740 kg (13.74 tons) with an area of 0.12 ha. So that the annual productivity reaches 114.50 tonnes / ha / year.

Verification February 8, 2021

ICS shows the updated data on FFB receipts for the period December 2019 s.d. November 2020 with sufficient data. For example:

- On behalf Ade Prastiono Situmoran with a production of 13.94 tons with a productivity of 15.66 tons / ha / year.
- On behalf Eko Joko Syaputro with a production of 1.82 tons with a productivity of 15.17 tons / ha / year.

Auditors Conclusion:

Based on the evidence of improvement that has been shown, the non-conformities have been **fulfilled**.

Verified by	: Brigitta P & Trismadi N
--------------------	--------------------------------------

<i>NCR No.</i>	:	2020.02	<i>Issued by</i>	:	Brigitta P.
<i>Date Issued</i>	:	17 December 2020	<i>Time Limit</i>	:	16 December 2021 (12 Months)
<i>NC Grade</i>	:	Critical	<i>Date of Closing</i>	:	8 February 2021
<i>Standard Ref. & Requirement</i>	:	C.1.1 An annual group business plan is available, which includes: <ul style="list-style-type: none">● Production and income forecasting based on historical records● Plans for expansion			
Evidence observed : Based on interview with ICS, it was explained expansion of the certification area will be conducting in 2021, there is a plan for the ICS KPM-GSB work program regarding plans to expand the scope of certification which will be carried out in June-August 2021.					
Non-Conformance Description: The cooperative has not been able to show an annual group business plan that includes estimates of production and income based on historical records.					
Root Cause Analysis : <ul style="list-style-type: none">● ICS has not properly documented the harvest records of members for each period.● ICS has not prepared a group business development plan that includes production estimates and analysis of potential production for the next year.					
Correction : The cooperative shows production estimates and historical record income through farmer receipts.					

Corrective Action :

- ICS will establish a system for recording the production income of each farmer who is a member of the RSPO.
- ICS will provide intensive assistance to all members in order to record harvest yields and document harvest results correctly
- The recorded that have been recorded will serve as a reference for business plans and annual production estimates.

Assessor Evaluation and Conclusion :
Verification, January 25, 2021.

The cooperative shows the estimated production for December 2019 - November 2020 and historical record income through farmer receipts. An example of a note for FFB payment with Initial name A dated December 6, 2020, amounted to 365 kg of FFB and 18 kg of loose fruit at a price of 1 kg of IDR 1,650, - so that the total paid is IDR 502,000.

The cooperative shows the SOP for collecting harvest records No / DOK / SOP / KPM-GSBM / 2019 which was approved by the Group Manager on February 3, 2020. These SOP include:

1. Independent farmers with potential for certification are required to fill out a harvest record form according to the weigh note.
2. The Head of the farmer group supervises the members of the farmer to comply with the rules set by the Group Manager.
3. The Head of the farmer group to collect the harvest records and the weigh note belonging to the farmers to be submitted to the ICS group.
4. The Head of the farmer group must submit the harvest records and weighing receipts to the ICS members for input no later than 5 days after harvesting.
5. The Head of the farmer group supervise the operation of the harvest record collection system and communicates it to the ICS team.
6. The Group Manager must inform each certified farmer to socialize the mandatory harvest record collection.

The cooperative shows the FFB projection for January - December 2021. However, there is no determination of the average FFB / Kg price projection in 2021, as the basis for projecting farmer income in 2021.

Verification February 8, 2021

ICS shows the determination of the projection of the average FFB / Kg price in 2021 with a value of: IDR 1,690 / Kg, besides that there is also a projection of production for each farmer in 2021. Based on the description above, this has been **fulfilled**.

Verified by : **Brigitta P & Trismadi N**

<i>NCR No.</i>	: 2020.03	<i>Issued by</i>	: Brigitta P.
<i>Date Issued</i>	: 17 December 2020	<i>Time Limit</i>	: 16 December 2021 (12 Months)
<i>NC Grade</i>	: Critical	<i>Date of Closing</i>	: 25 January 2021
<i>Standard Ref. & Requirement</i>	D 1.1. Record sheets to track the annual production and sales of certified volumes, covering traceability of producers and/or traders are available.		

Evidence observed:

- Based on interviews with 18 farmers in Adil Makmur Village, Sei Torop Village, Pengkolan Sub-Village, and Bosar Maligas Village show that the sale of FFB is directly carried out by farmers and sold to agents.
- FFB payment notes are kept by each farmer but there is information that 2 farmers do not keep the payment receipt.
- There is example of a FFB payment note with the initials Mr. S dated December 3, 2020, is 410 kg (1 kg as much as IDR 1,660,-) so the total paid is IDR 680,600 (CV New Putra Naga agent).

Non-Conformance Description:

The cooperative has not been able to show evidence that there is a record sheet of annual production and sales of certified FFB

volume which includes traceability of producers and / or sellers.	
Root Cause Analysis : <ul style="list-style-type: none"> There is no documentation of harvest and FFB production records for each farmer that were collected by ICS. ICS does not yet have a documented production recording system and yield sheet for each member farmer. 	
Correction : ICS shows a record sheet of annual production and sales volumes of certified FFB.	
Corrective Action : ICS will establish a system for documenting harvest records by referring to each FFB production record of each RSPO certification member.	
Assessor Evaluation and Conclusion : <p>Verification, January 25, 2021.</p> <p>The cooperative shows the estimated production for December 2019 - November 2020 and historical record income through farmer receipts. An example of a note for FFB payment with Initial name A dated December 6, 2020, amounted to 365 kg of FFB and 18 kg of loose fruit at a price of 1 kg of IDR 1,650, - so that the total paid is IDR 502,000.</p> <p>The cooperative shows the SOP for collecting harvest records No / DOK / SOP / KPM-GSBM / 2019 which was approved by the Group Manager on February 3, 2020. These SOP include:</p> <ol style="list-style-type: none"> 1. Independent farmers with potential for certification are required to fill out a harvest record form according to the weigh note. 2. The Head of the farmer group supervises the members of the farmer to comply with the rules set by the Group Manager. 3. The Head of the farmer group to collect the harvest records and the weigh note belonging to the farmers to be submitted to the ICS group. 4. The Head of the farmer group must submit the harvest records and weighing receipts to the ICS members for input no later than 5 days after harvesting. 5. The Head of the farmer group supervise the operation of the harvest record collection system and communicates it to the ICS team. 6. The Group Manager must inform each certified farmer to socialize the mandatory harvest record collection. <p>Based on the description above, this indicator is stated to be fulfilled.</p>	
Verified by	: Brigitta P.

3.3.3. Opportunity for Improvement

No	Ref. Std.	Description
1	1.1	Based on the results of interviews with the Group Manager/ICS, it was explained that at this time there was no submission of <i>STDB</i> and <i>SPPL</i> to the relevant agency, beside that the communication with the relevant agencies was carried out in October 2019. Then it is planned that the management will be carried out in 2021. However, the cooperative is considering making <i>STDB</i> and <i>SPPL</i> arrangements before the next phase of the RSPO assessment.
2	4.6.	Commitment not to use fire in the land preparation and pest control, it can be found in point D.16. The cooperative has also added a clause on the prohibition of using fire for waste management in the commitment. However, the cooperative is considering to re-socializing it to all members.

3.3.4. Noteworthy Positive Components

No	Description
1	The smallholders committed applying the principles of sustainable palm oil management.

3.4 Summary of Arising Issues from Public and Auditor Verification.

Public Issues (Institution/ NGO/Community)	Auditor Verification
<p>Tuesday, December 15, 2020. Sub-village of Tengah, Kulon, Teretak, Gunung Perak (Bosar Maligas Village), Dusun Pengkolan Village, Adil Makmur Village.</p> <ul style="list-style-type: none"> • There is no conflict, claim and dispute land in the KPM-GBSM. • There is no customary land. • The smallholders participate in cooperative membership without coercion and participate in signing the RSPO standard readiness statement for independent smallholders. • Group managers and management of cooperative have conducted training on good agriculture practice such as harvesting, fertilizing and chemical application. • Land source is obtained from buying & selling and inherited land. • Most of the smallholders have <i>SKT</i> but some have received <i>SHM</i>. • During audit, there has never been an issue regarding land fires. 	<p>There is no issue</p>
<p>Thursday, December 17, 2020 Secretary of Sei Torop Village by Phone</p> <ul style="list-style-type: none"> • There is no conflict, claim and dispute land in the KPM-GBSM. • There is no customary land. • The smallholders participate in cooperative membership without coercion and participate in signing the RSPO standard readiness statement for independent smallholders. • Group managers and management of cooperative have conducted training on good agriculture practice such as harvesting, fertilizing and chemical application. • Land source is obtained from buying & selling and inherited land. • Most of the smallholders have <i>SKT</i> but some have received <i>SHM</i>. • During audit, there has never been an issue regarding land fires. 	<p>There is no issue</p>

4.0	CERTIFIED ORGANISATION'S ACKNOWLEDGEMENT OF INTERNAL RESPONSIBILITY
4.1	Formal Sign-off of Assessment Findings
	<p>Hereunder sign by management representative from inspected company to acknowledge a field assessment and agree for all content explained in this assessment report, included of non-compliance findings.</p> <p>Signed on behalf of:</p> <div style="display: flex; justify-content: space-around; align-items: flex-end;"> <div style="text-align: center;"> <p>KPM-GSBM Group Manager</p>  <p>Ahmad Safri Monday, 08 February 2021</p> </div> <div style="text-align: center;"> <p>Mutuagung Lestari Lead Auditor</p>  <p>Trismadi Nurbayuto Monday, 08 February 2021</p> </div> </div>

Appendix 1. List of Stakeholder Contacted in the RSPO Certification Process

No	Institution/ NGO/ Community	Address	Phone/ Email	Form of Communication	Date of Contact	Response	
						Yes	No
1	Sawit Watch	Jakarta	Email	Questionnaire	16 December 2020	-	✓
2	WALHI	Jakarta	Email	Questionnaire	16 December 2020	-	✓
3	WWF	Jakarta	Email	Questionnaire	16 December 2020	-	✓
4	AMAN	Jakarta	Email	Questionnaire	16 December 2020	-	✓
5	Heru Ardianto	Lingkungan Rendahan, Kelurahan Bosar Maligas	-	Interview	16 December 2020	✓	-
6	Mardiana	Lingkungan Teratak, Kelurahan Bosar Maligas	-	Interview	16 December 2020	✓	-
7	Rusdi	Lingkungan Gunung Perak, Kelurahan Bosar Maligas	-	Interview	16 December 2020	✓	-
8	Darimun	Lingkungan 01 Tengah, Kelurahan Bosar Maligas	-	Interview	16 December 2020	✓	-
9	Sukarles Siregar	Adil Makmur Village	-	Interview	16 December 2020	✓	-
10	Mudawar	Adil Makmur Village	-	Interview	16 December 2020	✓	-
11	Lamin	Adil Makmur Village	-	Interview	16 December 2020	✓	-
12	Paidi A	Adil Makmur Village	-	Interview	16 December 2020	✓	-
13	Paing	Adil Makmur Village	-	Interview	16 December 2020	✓	-
14	Japasu Sinaga	Adil Makmur Village	-	Interview	16 December 2020	✓	-
15	Ribut 1	Adil Makmur Village	-	Interview	16 December 2020	✓	-
16	Subandi Purba	Adil Makmur Village	-	Interview	16 December 2020	✓	-
17	Santoso	Adil Makmur Village	-	Interview	16 December 2020	✓	-
18	Julpri Sialagan	Pengkolan Village	-	Interview	16 December 2020	✓	-
19	Budiono Damanik	Pengkolan Village	-	Interview	16 December 2020	✓	-
20	Ade Setiawan	Sei Torop Village	-	Interview	16 December 2020	✓	-
21	Sakiran Sinaga 3	Lingkungan Kulon, Kelurahan Bosar	-	Interview	16 December 2020	✓	-

		Maligas					
22	Sunardi 1	Pengkolan Village	-	Interview	16 December 2020	✓	
23	Secretary of Sei Torop Village	Sei Torop Village	Phone	interview	17 December 2020	✓	

Appendix 2. Assessment Program

DATE	15 – 18 December 2020	
PROGRAM	PROCESSES / CLAUSES TO BE AUDITED	AUDITOR
<i>Tuesday, 15 December 2020</i>		
07.50 – 10.15	Travelling from Jakarta (Cengkareng) to Medan (Kualanamu)	All Auditor
10.15 – 14.00	Travelling from Medan to Koperasi Gaharu	All Auditor
14.00 – 15.00	Opening Meeting	All Auditor
15.00 – 17.00	Document Verification of RSPO P&C	All Auditor
<i>Wednesday, 16 December 2020</i>		
08.00 – 12.00	<ul style="list-style-type: none"> Public Consultation and field observation: <ul style="list-style-type: none"> Lingkungan Tengah, Lingkungan Kulon, Lingkungan Teretak, Lingkungan Rendahan, Lingkungan Gunung Perak (Kelurahan Bosar Maligas); Pengkolan Village, Sei Torop Village. Adil Makmur Village 	TNB BRP
12.00 – 14.00	Break	All Auditor
14.00 – 17.00	Continue field observation and consultations	All Auditor
<i>Thursday, 17 December 2020</i>		
08.00 – 12.00	Document Verification of RSPO P&C	All Auditor
12.00 – 14.00	Break	All Auditor
14.00 – 15.00	Preparation of Closing Meeting	All Auditor
15.00 – 16.00	Closing Meeting	All Auditor
<i>Friday, 18 December 2020</i>		
07.00 – 09.00	Travelling from Pematang Siantar to Medan	All Auditor
11.15 – 13.40	Travelling from Medan (Kualanamu) to Jakarta (Cengkareng)	All Auditor