

***Roundtable on Sustainable Palm Oil Certification
R S P O***

[✓] Surveillance

Name of Management Organisation : **Asosiasi Petani Kelapa Sawit Mandiri**
 Plantation Name : **Asosiasi Petani Kelapa Sawit Mandiri**
 Location : Kadipi Atas and Sungai Rangit Jaya Village, Pangkalan Lada Sub District, Kotawaringin Barat District, Kalimantan Tengah Province, Indonesia
 Certificate Code : **MUTU-RSPO/136**
 Date of Certificate Issue : 22 October 2019 Date of License Issue : 22 March 2021
 Date of Certificate Expiry : 21 October 2024 Date of License Expiry : 21 October 2021

Assessment	Assessment Date	PT. Mutuagung Lestari Auditor	Reviewed by	Approved by
ASA-1	14 to 16 December 2020	Arif Faisal Simatupang (Lead Auditor), Nurdin Chaeriana, Johannes Kapri Pandiangan	Ardiansyah	Octo H.P.N Nainggolan

Assessment	Approved by MUTUAGUNG LESTARI on:
ASA-1	16 March 2021

TABLE OF CONTENT
FIGURE

Figure 1. Location Map of Asosiasi Petani Kelapa Sawit Mandiri 02

Figure 2. Operational Map of Asosiasi Petani Kelapa Sawit Mandiri 03

Abbreviations Used 04

1.0 SCOPE of the CERTIFICATION ASSESSMENT

1.1 Assessment Standard Used 06

1.2 Organisation Information 06

1.3 Type of Assessment 06

1.4 Location of Mill and Plantations 06

1.5 Description of Area Statement 24

1.6 Planting Year and Cycles 24

1.7 Description of Supply Base 25

1.8 Tonnage Product 32

1.9 Other Certification 41

2.0 ASSESSMENT PROCESS

2.1 Assessment Team 42

2.2 Assessment Methodology, Assessment Process and Locations of Assessment 42

2.3 Stakeholder Consultation and Stakeholders Contacted 44

2.4 Determining Next Assessment 44

3.0 ASSESSMENT FINDINGS

3.1 Summary of Assessment Report of the RSPO Certification 45

3.2 Conformity Checklist of Certificate and Logo Use 58

3.3 Identification of Findings, Corrective Actions, Observations, Opportunity for Improvement and Noteworthy Positive Components 59

3.4 Summary of Arising Issues from Public, Management and Auditor Responses 72

4.0 CERTIFIED ORGANISATION'S ACKNOWLEDGEMENT OF INTERNAL RESPONSIBILITY

4.1 Formal Signing of Assessment Findings 73

APPENDICES

1. List of Stakeholders Contacted in the RSPO Certification Process 74

2. Assessment Program 75

Figure 1. Location Map of Asosiasi Petani Kelapa Sawit Mandiri

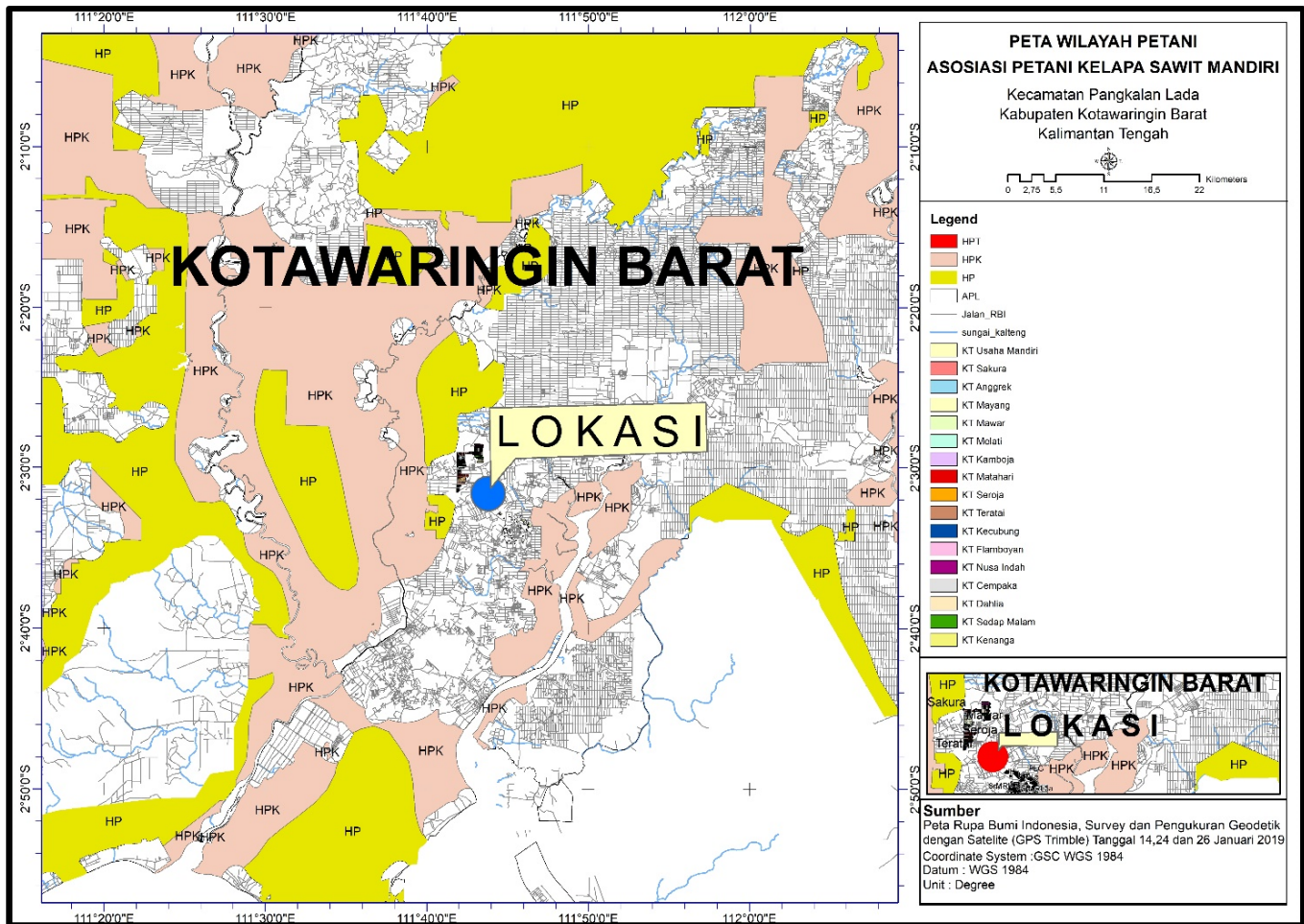
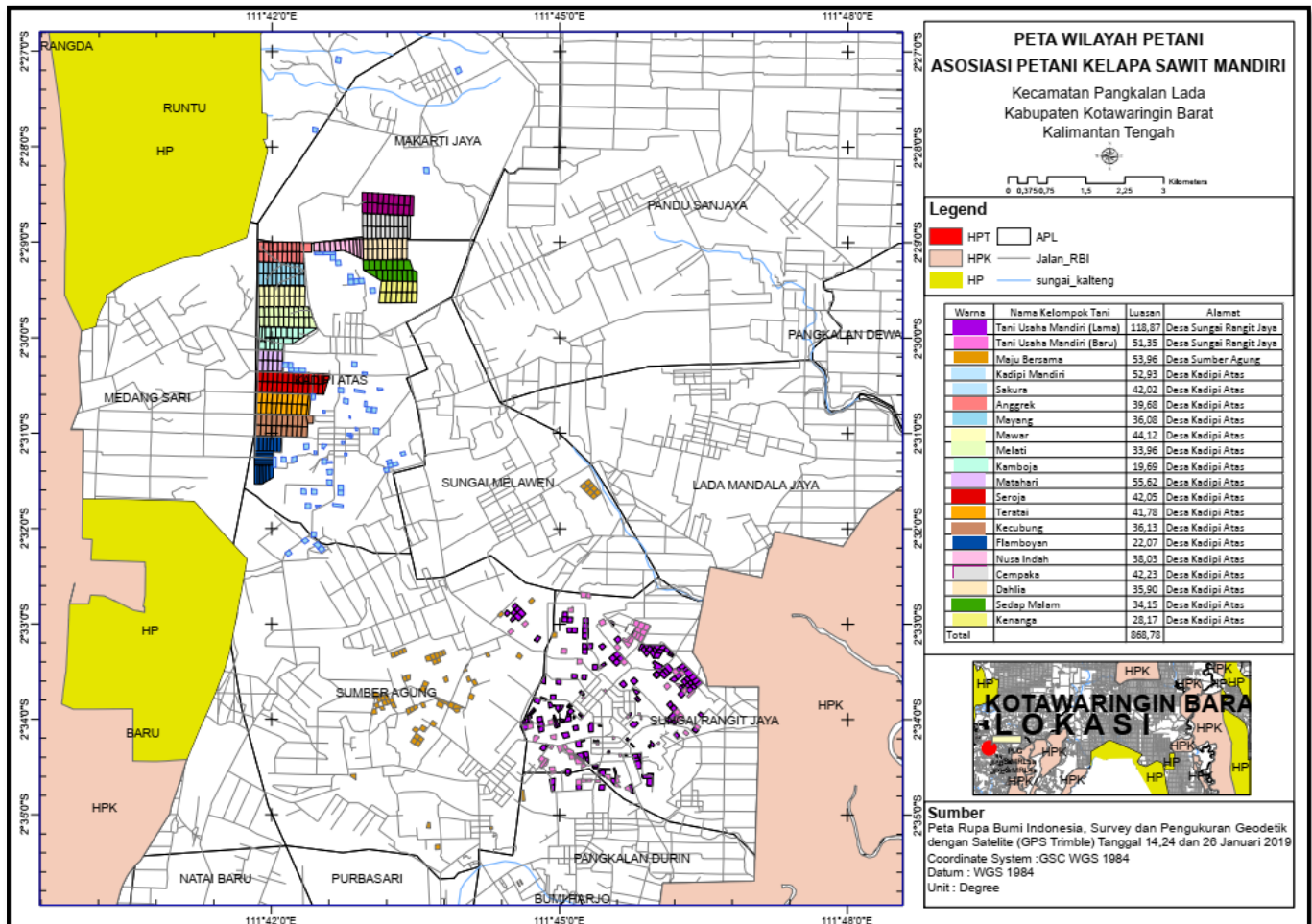


Figure 2. Operational Map of Asosiasi Petani Kelapa Sawit Mandiri



Abbreviations Used

ASA	:	Annual Surveillance Assessment
APKSM	:	Asosiasi Petani Kelapa Sawit Mandiri
BMP	:	Best Management Practices
BOD	:	Biological Oxygen Demand
BPJS	:	Workers Social Security Agency
CB	:	Certification Body
CH	:	Certificate Holder
CITES	:	Convention, International, Threatened, Endangered Species
CPO	:	Crude Palm Oil
CSPO	:	Certified Sustainable Palm Oil
CSR	:	Corporate Social Responsibility
EFB	:	Empty Fruit Bunches
EHS	:	Environmental, Health and Safety
EIA	:	Environmental Impact Assessment
EMS	:	Environmental Management System
FFB	:	Fresh Fruit Bunches
FPIC	:	Free, Prior and Informed Consent
GHG	:	Green House Gases
HCV	:	High Conservation Value
HGU	:	<i>Hak Guna Usaha</i> (Land Use Title/Right)
HIRAC	:	Hazard Identification Risk Assessment and Control
HSE	:	Health Safety and Environment
IA	:	Initial Assessment
IPM	:	Integrated Pest Management
ISO	:	International Standard Organisation
ISPO	:	Indonesia Sustainable Palm Oil
IUCN	:	International Union for Conservation of Nature
KUD	:	<i>Koperasi Unit Desa</i> (Village Unit Cooperative)
KER	:	Kernel Extraction Rate
LUC	:	Land Use Change
LSU	:	Leaf Sampling Unit
MUTU	:	Mutuagung Lestari
NGO	:	Non-Government Organisation
NPWP	:	<i>Nomor Pokok Wajib Pajak</i> (tax number)
OER	:	Oil Extraction Rate
OHS	:	Occupational Health and Safety
OHSAS	:	Occupational Health and Safety Assessment Series
P&C	:	Principle and Criteria
PIC	:	Personnel In Charge
PK	:	Palm Kernel
PLN	:	<i>Perusahaan Listrik Negara</i> (State Owned Electricity Company)
PPE	:	Personnel Protective Equipment
Puskesmas	:	<i>Pusat Kesehatan Masyarakat</i> (Community Health Centers)
P2K3	:	<i>Panitia Pembina Keselamatan dan Kesehatan Kerja</i> OHS Committee
QHSE	:	Quality, Health, Safety and Environmental
RKL- RPL	:	Environmental Management and Monitoring Report
RSPO	:	Roundtable on Sustainable Palm Oil
RTE	:	Rare, threatened or endangered
SCCS	:	Supply Chain Certification System

SIA	:	Social Impact Assessment
SSMS	:	Sawit Sumbermas Sarana
SPO	:	Sustainability Palm Oil
SPPL	:	<i>Surat Pernyataan kesanggupan pengelolaan dan pemantauan Lingkungan</i>
SOP	:	Standard Operating Procedure
SSU	:	Soil Sampling Unit
STDB	:	<i>Surat Tanda Daftar Budidaya</i> (Cultivation permit)
UMP	:	<i>Upah Minimum Provinsi</i>
UMSP	:	<i>Upah Minimum Sektoral Provinsi</i>
WHO	:	World Health Organization

1.0	SCOPE of the CERTIFICATION ASSESSMENT			
1.1	Assessment Standard Used	<ul style="list-style-type: none"> • RSPO Certification System for Principles and Criteria, 14 June 2017 • RSPO Independent Smallholder Standard 2019 – Milestone B, dated 6 November 2019. 		
1.2	Organisation Information			
1.2.1	Organisation name listed in the certificate	Asosiasi Petani Kelapa Sawit Mandiri		
1.2.2	Contact person	YB Zainanto HW		
1.2.3	Organisation address and site address	Kadipi Atas and Sungai Rangit Jaya Village, Kotawaringin Barat District, Kalimantan Tengah Province, Indonesia		
1.2.4	Telephone	(+62) 813 9273 2676		
1.2.5	Fax	-		
1.2.6	E-mail	mailbox.asosiasi@gmail.com		
1.2.7	Web page address	-		
1.2.8	Management Representative who completed the application for certification	YB Zainanto HW		
1.2.9	Registered as RSPO member	1-0279-19-000-00, dated 07 August 2019		
1.3	Type of Assessment			
1.3.1	Scope of Assessment and Number of Management Unit	On ASA-1 there is extension scope of additional smallholders to 327 smallholders with area 868.78 ha.		
1.3.2	Type of certificate	Single		
1.4	Locations of Mill and Plantation			
1.4.1	Location of Certification Scope of Supply Base			
	Name Member of Smallholders	Location	Coordinate	
			Latitude	Longitude
1.	Suryansyah	Sungai Rangit Jaya Village	2° 33' 24.116" S	111° 45' 28.098" E
2.	Sarjono	Sungai Rangit Jaya Village	2° 33' 2.459" S	111° 45' 7.762" E
3.	Pulung	Sungai Rangit Jaya Village	2° 32' 58.441" S	111° 45' 49.925" E
4.	Yatimin	Sungai Rangit Jaya Village	2° 34' 3.778" S	111° 44' 36.305" E
			2° 33' 29.991" S	111° 46' 12.333" E
			2° 33' 30.722" S	111° 46' 16.599" E
5.	Tukiman	Sungai Rangit Jaya Village	2° 33' 46.278" S	111° 44' 44.977" E
			2° 33' 45.81" S	111° 44' 48.3" E
6.	Suparto	Sungai Rangit Jaya Village	2° 33' 21.704" S	111° 45' 35.64" E
			2° 33' 21.492" S	111° 45' 30.848" E
			2° 33' 17.035" S	111° 45' 36.05" E
7.	Sareh	Sungai Rangit Jaya Village	2° 34' 31.328" S	111° 45' 3.586" E
8.	Muryono	Sungai Rangit Jaya Village	2° 33' 31.946" S	111° 45' 13.914" E

			2° 33' 55.336" S	111° 46' 27.926" E
9.	Nardi	Sungai Rangit Jaya Village	2° 32' 55.831" S	111° 45' 5.13" E
			2° 33' 41.785" S	111° 45' 13.198" E
10.	Sujarno	Sungai Rangit Jaya Village	2° 32' 58.502" S	111° 45' 31.003" E
11.	Suman	Sungai Rangit Jaya Village	2° 33' 49.331" S	111° 44' 52.886" E
12.	Sriyati	Sungai Rangit Jaya Village	2° 33' 58.029" S	111° 45' 12.812" E
13.	Nafi'i	Sungai Rangit Jaya Village	2° 33' 58.316" S	111° 45' 4.363" E
			2° 34' 4.26" S	111° 45' 8.258" E
			2° 33' 53.046" S	111° 46' 8.965" E
			2° 33' 55.321" S	111° 46' 11.147" E
14.	Sanawi	Sungai Rangit Jaya Village	2° 34' 7.864" S	111° 46' 12.77" E
			2° 34' 6.672" S	111° 46' 22.627" E
15.	Suwadi	Sungai Rangit Jaya Village	2° 33' 21.673" S	111° 45' 35.662" E
			2° 32' 56.091" S	111° 45' 14.594" E
16.	Judin	Sungai Rangit Jaya Village	2° 33' 2.603" S	111° 45' 17.673" E
17.	Suparmi	Sungai Rangit Jaya Village	2° 33' 2.462" S	111° 45' 4.518" E
18.	Boiman	Sungai Rangit Jaya Village	2° 32' 52.523" S	111° 45' 1.85" E
19.	Ujang Suryana	Sungai Rangit Jaya Village	2° 32' 55.514" S	111° 45' 1.598" E
20.	Bagiyoto	Sungai Rangit Jaya Village	2° 34' 2.309" S	111° 45' 47.171" E
21.	Ketut Kudiana	Sungai Rangit Jaya Village	2° 34' 36.84" S	111° 44' 57.106" E
			2° 34' 45.386" S	111° 44' 54.989" E
22.	Taswi	Sungai Rangit Jaya Village	2° 33' 41.742" S	111° 46' 16.169" E
23.	Khamin	Sungai Rangit Jaya Village	2° 33' 9.184" S	111° 45' 17.482" E
			2° 34' 37.042" S	111° 45' 52.088" E
			2° 33' 2.563" S	111° 45' 14.461" E
			2° 33' 29.632" S	111° 46' 0.962" E
			2° 34' 41.711" S	111° 45' 57.596" E
24.	Juari	Sungai Rangit Jaya Village	2° 32' 51.385" S	111° 44' 26.887" E
			2° 33' 55.742" S	111° 45' 12.722" E
25.	Tukino	Sungai Rangit Jaya Village	2° 33' 34.831" S	111° 44' 57.804" E
			2° 33' 7.42" S	111° 44' 46.295" E
26.	Imam Pamuji	Sungai Rangit Jaya Village	2° 32' 49.049" S	111° 44' 30.307" E
			2° 32' 50.91" S	111° 44' 31.69" E
			2° 32' 53.146" S	111° 44' 29.468" E
			2° 32' 57.286" S	111° 44' 28.979" E
			2° 32' 50.416" S	111° 44' 35.694" E
			2° 32' 58.088" S	111° 44' 34.426" E

27.	Suhadi	Sungai Rangit Jaya Village	2° 34' 13.901" S	111° 45' 9.904" E
28.	Sumindar	Sungai Rangit Jaya Village	2° 33' 57.218" S	111° 44' 56.72" E
			2° 34' 2.194" S	111° 45' 1.519" E
29.	JP. ERIG. G. Simorangkir	Sungai Rangit Jaya Village	2° 34' 32.653" S	111° 45' 23.918" E
			2° 34' 32.966" S	111° 45' 24.552" E
30.	Supandi	Sungai Rangit Jaya Village	2° 33' 55.861" S	111° 45' 43.783" E
			2° 33' 7.621" S	111° 45' 36.504" E
			2° 33' 25.502" S	111° 45' 20.628" E
			2° 33' 48.488" S	111° 46' 9.214" E
			2° 33' 38.207" S	111° 46' 15.636" E
31.	Sakur	Sungai Rangit Jaya Village	2° 34' 13.476" S	111° 45' 56.719" E
			2° 34' 13.818" S	111° 45' 42.422" E
			2° 33' 30.11" S	111° 46' 14.855" E
			2° 33' 38.2" S	111° 46' 15.848" E
			2° 33' 35.003" S	111° 46' 8.828" E
32.	Pranyoto	Sungai Rangit Jaya Village	2° 33' 12.27" S	111° 45' 14.152" E
			2° 33' 12.308" S	111° 45' 20.617" E
			2° 33' 15.667" S	111° 45' 17.258" E
33.	Arif Mulyono	Sungai Rangit Jaya Village	2° 33' 26.665" S	111° 46' 4.742" E
			2° 33' 26.665" S	111° 46' 4.742" E
			2° 33' 28.789" S	111° 46' 11.161" E
			2° 33' 53.011" S	111° 45' 6.833" E
			2° 33' 54.344" S	111° 45' 0.995" E
			2° 33' 12.182" S	111° 45' 26.873" E
			2° 33' 51.204" S	111° 44' 57.625" E
			2° 33' 44.539" S	111° 44' 54.28" E
			2° 33' 42.902" S	111° 45' 14.584" E
			2° 34' 8.848" S	111° 45' 1.228" E
			2° 33' 57.255" S	111° 45' 9.14" E
			2° 33' 28.476" S	111° 45' 59.879" E
			2° 33' 34.355" S	111° 46' 5.358" E
			2° 33' 27.905" S	111° 46' 5.974" E
34.	Edi Susilo	Sungai Rangit Jaya Village	2° 33' 35.694" S	111° 45' 44.348" E
			2° 33' 35.561" S	111° 45' 39.787" E
35.	Seno	Sungai Rangit Jaya Village	2° 33' 28.048" S	111° 46' 20.722" E
			2° 33' 13.717" S	111° 45' 52.495" E
			2° 33' 16.291" S	111° 46' 1.207" E

			2° 33' 35.967" S	111° 46' 22.404" E
			2° 33' 16.84" S	111° 46' 4.691" E
			2° 33' 38.375" S	111° 46' 17.936" E
			2° 33' 21.649" S	111° 45' 59.719" E
			2° 33' 34.311" S	111° 46' 17.756" E
			2° 33' 13.238" S	111° 45' 56.215" E
			2° 33' 19.913" S	111° 46' 10.882" E
			2° 33' 38.165" S	111° 46' 24.28" E
			2° 33' 16.35" S	111° 46' 4.981" E
			2° 33' 33.515" S	111° 46' 20.217" E
			2° 33' 36.842" S	111° 46' 19.863" E
			2° 33' 12.164" S	111° 45' 51.16" E
			2° 33' 26.824" S	111° 46' 14.206" E
			2° 33' 20.612" S	111° 45' 54.196" E
			2° 33' 20.877" S	111° 46' 10.25" E
			2° 33' 32.792" S	111° 46' 19.56" E
			2° 33' 16.35" S	111° 46' 4.981" E
			2° 33' 13.717" S	111° 45' 52.495" E
			2° 33' 26.526" S	111° 46' 19.235" E
			2° 33' 33.515" S	111° 46' 20.217" E
			2° 33' 16.203" S	111° 45' 54.024" E
			2° 33' 39.051" S	111° 46' 21.699" E
			2° 33' 37.357" S	111° 46' 23.59" E
			2° 33' 15.803" S	111° 45' 57.859" E
36.	Suyadi	Sungai Rangit Jaya Village	2° 34' 18.455" S	111° 44' 47.605" E
			2° 34' 41.178" S	111° 45' 24.833" E
			2° 34' 41.275" S	111° 45' 43.272" E
			2° 34' 41.106" S	111° 45' 10.361" E
37.	Suyitno	Sungai Rangit Jaya Village	2° 33' 31.385" S	111° 44' 51.277" E
38.	Suwandi	Sungai Rangit Jaya Village	2° 33' 59.123" S	111° 44' 55.687" E
39.	Triyono	Sungai Rangit Jaya Village	2° 33' 58.594" S	111° 44' 45.812" E
			2° 34' 0.784" S	111° 44' 38.554" E
			2° 33' 57.849" S	111° 44' 39.49" E
			2° 34' 2.402" S	111° 44' 42.965" E
			2° 33' 59.289" S	111° 44' 39.898" E
			2° 33' 59.289" S	111° 44' 39.898" E
40.	Kiswoto	Sungai Rangit Jaya Village	2° 33' 51, 988" S	111° 45' 4.37" E

			2° 33' 51.937" S	111° 45' 8.053" E
			2° 33' 50.977" S	111° 45' 7.276" E
41.	Dirap. E	Sungai Rangit Jaya Village	2° 34' 1.895" S	111° 44' 46.712" E
42.	Joko Purnomo	Sungai Rangit Jaya Village	2° 33' 40.594" S	111° 45' 45.348" E
			2° 33' 47.732" S	111° 45' 50.602" E
			2° 33' 45.245" S	111° 45' 48.55" E
			2° 34' 15.607" S	111° 44' 51.5" E
43.	Sumoro	Sungai Rangit Jaya Village	2° 34' 27.487" S	111° 45' 18.382" E
			2° 34' 30.499" S	111° 45' 33.666" E
			2° 33' 59.872" S	111° 46' 11.467" E
			2° 34' 13.069" S	111° 45' 23.044" E
			2° 34' 31.372" S	111° 45' 23.85" E
			2° 34' 21.9" S	111° 45' 40.49" E
			2° 34' 28.668" S	111° 45' 20.135" E
			2° 34' 20.69" S	111° 45' 14.767" E
			2° 34' 22.213" S	111° 45' 45.374" E
			2° 34' 30.504" S	111° 45' 50.972" E
			2° 34' 24.466" S	111° 45' 46.131" E
			2° 34' 21.193" S	111° 45' 50.694" E
44.	Marlan	Sungai Rangit Jaya Village	2° 34' 13.109" S	111° 45' 13.356" E
			2° 34' 20.87" S	111° 45' 14.353" E
			2° 34' 4.411" S	111° 44' 49.848" E
			2° 34' 20.147" S	111° 45' 29.862" E
			2° 34' 14.466" S	111° 45' 22.651" E
45.	Ramli	Sungai Rangit Jaya Village	2° 33' 2.070" S	111° 45' 54.030" E
			2° 33' 3.824" S	111° 45' 49.119" E
			2° 33' 8.891" S	111° 45' 50.881" E
46.	Ahmad Rifani	Sungai Rangit Jaya Village	2° 34' 17.381" S	111° 45' 3.535" E
47.	Fita Sari Ningsih	Sungai Rangit Jaya Village	2° 33' 6.605" S	111° 45' 47.089" E
			2° 32' 59.583" S	111° 45' 47.994" E
48.	Salwiyah	Sungai Rangit Jaya Village	2° 33' 3.313" S	111° 45' 41.328" E
49.	Indarti	Sungai Rangit Jaya Village	2° 33' 0.871" S	111° 45' 51.004" E
			2° 33' 5.298" S	111° 45' 52.250" E
			2° 33' 7.696" S	111° 45' 48.869" E
50.	Makruf Asrobi	Sungai Rangit Jaya Village	2° 34' 14.945" S	111° 46' 1.824" E
			2° 33' 27.301" S	111° 45' 25.461" E
51.	Juremi	Sungai Rangit Jaya Village	2° 34' 27.902" S	111° 44' 51.442" E

		Pangkalan Durin Village	2° 34' 38.458" S	111° 45' 18.496" E
		Sungai Rangit Jaya Village	2° 34' 36.191" S	111° 45' 30.389" E
		Pangkalan Durin Village	2° 34' 38.512" S	111° 45' 15.094" E
52.	Heni Suprianto	Pangkalan Durin Village	2° 34' 39.429" S	111° 45' 11.810" E
		Sungai Rangit Jaya Village	2° 34' 22.562" S	111° 45' 37.862" E
53.	Ali Bustommy	Sungai Rangit Jaya Village	2° 34' 1.798" S	111° 44' 54.498" E
54.	Saeroji	Sumber Agung Village	2° 32' 59.870" S	111° 44' 38.348" E
		Sungai Rangit Jaya Village	2° 32' 51.293" S	111° 45' 6.813" E
		Sungai Rangit Jaya Village	2° 33' 43.931" S	111° 46' 21.964" E
55.	Supriyanto	Sungai Rangit Jaya Village	2° 33' 10.148" S	111° 45' 44.501" E
			2° 33' 38.046" S	111° 46' 13.806" E
			2° 33' 12.413" S	111° 45' 42.048" E
56.	Siswati	Sungai Rangit Jaya Village	2° 33' 9.330" S	111° 45' 42.009" E
57.	Muhammad Muhsin Adi	Sungai Rangit Jaya Village	2° 33' 14.627" S	111° 45' 36.123" E
58.	Purnomo	Sungai Rangit Jaya Village	2° 34' 11.625" S	111° 45' 33.762" E
59.	Jarkasi	Sungai Rangit Jaya Village	2° 34' 4.729" S	111° 46' 25.867" E
		Sumber Agung Village	2° 33' 4.942" S	111° 44' 29.461" E
60.	Junaidi	Sungai Rangit Jaya Village	2° 33' 58.543" S	111° 45' 42.468" E
			2° 33' 56.624" S	111° 45' 49.867" E
			2° 33' 23.536" S	111° 45' 12.357" E
			2° 33' 58.909" S	111° 45' 50.869" E
61.	Jasmi	Sungai Rangit Jaya Village	2° 34' 8.562" S	111° 46' 18.870" E
			2° 32' 59.003" S	111° 45' 26.561" E
62.	Nasirin	Sungai Rangit Jaya Village	2° 33' 46.498" S	111° 45' 14.839" E
			2° 33' 41.954" S	111° 45' 28.386" E
			2° 33' 24.040" S	111° 45' 40.265" E
63.	Pariyono	Sungai Rangit Jaya Village	2° 34' 23.672" S	111° 45' 7.518" E
64.	Sutikno	Sungai Rangit Jaya Village	2° 34' 23.968" S	111° 45' 9.874" E
			2° 34' 17.579" S	111° 44' 55.052" E
			2° 34' 24.429" S	111° 45' 12.643" E
65.	Samini	Sungai Rangit Jaya Village	2° 34' 26.604" S	111° 45' 11.828" E
66.	Sumeh	Sungai Rangit Jaya Village	2° 34' 24.865" S	111° 44' 48.870" E
67.	Slamet Riyanto	Pangkalan Durin Village	2° 34' 38.816" S	111° 45' 24.003" E
68.	Marinem	Sungai Rangit Jaya Village	2° 34' 27.495" S	111° 44' 50.018" E
69.	Rusdi	Sungai Rangit Jaya Village	2° 33' 41.779" S	111° 46' 18.124" E
70.	Sriwati	Sungai Rangit Jaya Village	2° 33' 39.139" S	111° 46' 7.171" E
71.	Nardi Sugito	Sungai Rangit Jaya Village	2° 32' 41.533" S	111° 45' 14.894" E

72.	Suharti	Sungai Rangit Jaya Village	2° 32' 42.142" S	111° 45' 18.035" E
73.	Mujini	Sungai Rangit Jaya Village	2° 34' 31.332" S	111° 44' 55.460" E
		Pangkalan Durin Village	2° 34' 33.573" S	111° 44' 55.855" E
74.	Fatkur Rohman	Sungai Rangit Jaya Village	2° 34' 29.153" S	111° 45' 14.809" E
75.	Putri Inlia Andriani	Sungai Rangit Jaya Village	2° 34' 20.297" S	111° 45' 6.249" E
76.	Sudarmo	Sungai Rangit Jaya Village	2° 34' 11.131" S	111° 44' 56.250" E
77.	Prawoto	Sungai Rangit Jaya Village	2° 34' 35.080" S	111° 45' 24.620" E
78.	Misni	Sungai Rangit Jaya Village	2° 34' 43.388" S	111° 45' 42.533" E
			2° 34' 41.406" S	111° 45' 36.045" E
			2° 34' 15.515" S	111° 45' 23.625" E
79.	Nafidlotul Sarofah	Sungai Rangit Jaya Village	2° 34' 18.552" S	111° 45' 0.071" E
80.	Warnuji	Sungai Rangit Jaya Village	2° 33' 55.465" S	111° 46' 13.334" E
			2° 33' 57.847" S	111° 46' 15.603" E
81.	Ramu Mulyati	Sungai Rangit Jaya Village	2° 34' 37.767" S	111° 45' 36.238" E
82.	Tuningah	Sungai Rangit Jaya Village	2° 34' 13.426" S	111° 44' 44.445" E
83.	Miseran	Sungai Rangit Jaya Village	2° 34' 4.271" S	111° 44' 41.688" E
			2° 33' 59.758" S	111° 46' 13.465" E
84.	Tarmini	Sungai Rangit Jaya Village	2° 33' 17.067" S	111° 45' 2.648" E
85.	Khoirudin	Kadipi Atas Village	2° 29' 6.03" S	111° 41' 51.63" E
86.	Rosdiana Melva	Kadipi Atas Village	2° 29' 6.051" S	111° 41' 54.918" E
87.	Kisdiyanto	Kadipi Atas Village	2° 29' 6.071" S	111° 41' 57.93" E
88.	Painah	Kadipi Atas Village	2° 29' 6.088" S	111° 42' 0.631" E
89.	Hj. Noor Asiah H.S	Kadipi Atas Village	2° 29' 6.108" S	111° 42' 3.758" E
90.	Winata Mihel	Kadipi Atas Village	2° 29' 6.127" S	111° 42' 6.649" E
			2° 30' 55.529" S	111° 42' 6.329" E
91.	Iman Aminullah	Kadipi Atas Village	2° 29' 6.145" S	111° 42' 9.511" E
			2° 29' 40.418" S	111° 41' 55.138" E
92.	Sri Utami	Kadipi Atas Village	2° 29' 6.163" S	111° 42' 12.298" E
			2° 29' 6.071" S	111° 41' 57.93" E
			2° 29' 19.941" S	111° 42' 17.193" E
			2° 29' 12.439" S	111° 41' 57.521" E
			2° 29' 13.04" S	111° 42' 14.154" E
			2° 29' 33.991" S	111° 42' 1.501" E
			2° 29' 46.91" S	111° 42' 16.881" E
93.	Lamsir Sianturi	Kadipi Atas Village	2° 29' 6.181" S	111° 42' 15.057" E
			2° 30' 0.181" S	111° 42' 12.914" E
			2° 31' 20.315" S	111° 41' 49.196" E

			2° 31' 20.314" S	111° 41' 52.709" E
94.	Giran Agus Widodo	Kadipi Atas Village	2° 29' 6.196" S	111° 42' 17.465" E
95.	Suparni	Kadipi Atas Village	2° 29' 6.03" S	111° 41' 51.63" E
96.	Abd. Munif	Kadipi Atas Village	2° 29' 6.051" S	111° 41' 54.918" E
			2° 29' 11.181" S	111° 43' 4.357" E
			2° 29' 17.48" S	111° 43' 28.171" E
97.	Ahmad Saifudin	Kadipi Atas Village	2° 29' 6.088" S	111° 42' 0.631" E
98.	Parmun	Kadipi Atas Village	2° 29' 6.108" S	111° 42' 3.758" E
99.	Kitman	Kadipi Atas Village	2° 29' 6.127" S	111° 42' 6.649" E
100.	Bowo	Kadipi Atas Village	2° 29' 6.145" S	111° 42' 9.511" E
101.	Subakir	Kadipi Atas Village	2° 29' 6.163" S	111° 42' 12.298" E
102.	Hafis	Kadipi Atas Village	2° 29' 6.181" S	111° 42' 15.057" E
103.	Karsono Hadi	Kadipi Atas Village	2° 29' 6.196" S	111° 42' 17.465" E
104.	Sriyatni	Kadipi Atas Village	2° 29' 6.211" S	111° 42' 19.841" E
105.	Tumijan	Kadipi Atas Village	2° 29' 19.718" S	111° 41' 51.75" E
106.	Sulkan	Kadipi Atas Village	2° 29' 19.743" S	111° 41' 54.658" E
107.	Wahyudi	Kadipi Atas Village	2° 29' 12.439" S	111° 41' 57.521" E
			2° 29' 33.998" S	111° 42' 11.051" E
108.	Supriono	Kadipi Atas Village	2° 29' 19.791" S	111° 42' 0.143" E
109.	Sukadi	Kadipi Atas Village	2° 29' 19.816" S	111° 42' 3.011" E
			2° 31' 2.044" S	111° 41' 59.064" E
			2° 28' 58.015" S	111° 42' 52.815" E
			2° 28' 35.985" S	111° 43' 12.754" E
110.	Sukeri	Kadipi Atas Village	2° 29' 19.842" S	111° 42' 5.968" E
111.	M. Khoiruddin	Kadipi Atas Village	2° 29' 19.867" S	111° 42' 8.796" E
112.	Poniman	Kadipi Atas Village	2° 29' 19.891" S	111° 42' 11.535" E
113.	Mustakim	Kadipi Atas Village	2° 29' 19.916" S	111° 42' 14.321" E
114.	Sudarmono	Kadipi Atas Village	2° 29' 12.228" S	111° 41' 51.695" E
115.	Parjiyo	Kadipi Atas Village	2° 29' 12.338" S	111° 41' 54.741" E
116.	Karmudi	Kadipi Atas Village	2° 29' 12.534" S	111° 42' 0.143" E
117.	Budiman	Kadipi Atas Village	2° 29' 12.639" S	111° 42' 3.05" E
118.	Khoirun	Kadipi Atas Village	2° 29' 12.743" S	111° 42' 5.926" E
119.	Ponimin	Kadipi Atas Village	2° 29' 12.941" S	111° 42' 11.406" E
120.	Reza Alamsyah	Kadipi Atas Village	2° 29' 13.147" S	111° 42' 17.11" E
121.	Yunanto	Kadipi Atas Village	2° 29' 40.414" S	111° 41' 51.966" E
122.	Imam Widodo	Kadipi Atas Village	2° 29' 33.989" S	111° 41' 58.256" E
123.	Boy Iskandar	Kadipi Atas Village	2° 29' 33.994" S	111° 42' 4.622" E

			2° 29' 33.989" S	111° 41' 58.256" E
			2° 28' 35.727" S	111° 43' 9.387" E
124.	Abdul Khobar	Kadipi Atas Village	2° 29' 33.996" S	111° 42' 7.867" E
125.	Tri Haryati	Kadipi Atas Village	2° 29' 34.001" S	111° 42' 14.234" E
126.	M. Suryono Kamdani	Kadipi Atas Village	2° 29' 34.003" S	111° 42' 17.386" E
127.	Sagi	Kadipi Atas Village	2° 29' 33.984" S	111° 41' 51.888" E
			2° 30' 0.102" S	111° 42' 7.21" E
			2° 30' 2.371" S	111° 41' 55.853" E
			2° 30' 0.275" S	111° 42' 18.663" E
			2° 30' 28.268" S	111° 42' 10.022" E
			2° 30' 21.381" S	111° 41' 54.46" E
128.	Sukirah	Kadipi Atas Village	2° 29' 33.986" S	111° 41' 55.104" E
129.	Wahyu Ningsih	Kadipi Atas Village	2° 29' 33.991" S	111° 42' 1.501" E
130.	Suparman Dika	Kadipi Atas Village	2° 29' 33.994" S	111° 42' 4.622" E
131.	Suwarno	Kadipi Atas Village	2° 29' 33.996" S	111° 42' 7.867" E
			2° 29' 33.998" S	111° 42' 11.051" E
			2° 30' 28.522" S	111° 42' 16.539" E
			2° 30' 21.258" S	111° 41' 51.158" E
			2° 30' 41.09" S	111° 41' 59.919" E
			2° 31' 20.314" S	111° 41' 51.04" E
			2° 31' 11.255" S	111° 42' 1.019" E
132.	Murjito	Kadipi Atas Village	2° 29' 34.001" S	111° 42' 14.234" E
133.	Wahyudi Wiwaha	Kadipi Atas Village	2° 29' 34.003" S	111° 42' 17.386" E
134.	Agung Sri Wahono	Kadipi Atas Village	2° 29' 52.984" S	111° 41' 52.12" E
135.	Suwasno	Kadipi Atas Village	2° 29' 53.059" S	111° 41' 55.15" E
			2° 29' 53.916" S	111° 42' 20.021" E
			2° 30' 49.992" S	111° 42' 48.836" E
			2° 31' 6.242" S	111° 42' 44.455" E
			2° 30' 22.436" S	111° 42' 58.095" E
			2° 31' 17.915" S	111° 42' 32.961" E
			2° 31' 45.867" S	111° 42' 22.716" E
136.	Sugiyanto	Kadipi Atas Village	2° 29' 46.884" S	111° 41' 58.183" E
			2° 29' 46.901" S	111° 42' 10.624" E
			2° 29' 46.919" S	111° 42' 23.209" E
			2° 29' 46.897" S	111° 42' 7.586" E
			2° 29' 46.915" S	111° 42' 20.099" E
			2° 30' 0.056" S	111° 42' 1.553" E

			2° 30' 22, 443" S	111° 42' 23.042" E
			2° 29' 31.405" S	111° 43' 17.954" E
137.	Marijo	Kadipi Atas Village	2° 29' 46.888" S	111° 42' 1.364"E
138.	Wely	Kadipi Atas Village	2° 29' 46.892" S	111° 42' 4.475" E
139.	Sartono	Kadipi Atas Village	2° 29' 46.897" S	111° 42' 7.586" E
			2° 28' 35.131" S	111° 42' 59.587" E
140.	M. Romli	Kadipi Atas Village	2° 29' 46.906" S	111° 42' 13.806" E
141.	Suparman Jadi	Kadipi Atas Village	2° 29' 46.91" S	111° 42' 16.881" E
142.	Pujianto	Kadipi Atas Village	2° 29' 46.915" S	111° 42' 20.099" E
			2° 30' 40.915" S	111° 41' 50.471"E
143.	M. Baedowi	Kadipi Atas Village	2° 29' 46.875" S	111° 41' 52.049" E
144.	Taruni	Kadipi Atas Village	2° 29' 46.879" S	111° 41' 55.108" E
145.	Sukarsih	Kadipi Atas Village	2° 29' 46.884" S	111° 41' 58.183" E
146.	Drs. Regol Cikar	Kadipi Atas Village	2° 29' 46.888" S	111° 42' 1.364" E
			2° 29' 53.561" S	111° 42' 2.526" E
			2° 28' 49.95" S	111° 43' 5.211" E
			2° 29' 4.012" S	111° 43' 15.341" E
			2° 29' 17.516" S	111° 43' 9.08" E
147.	Sudarno	Kadipi Atas Village	2° 29' 46.892" S	111° 42' 4.475" E
148.	Heriyanto	Kadipi Atas Village	2° 29' 46.901" S	111° 42' 10.624" E
			2° 30' 41.735" S	111° 42' 12.574" E
149.	M. Yusran	Kadipi Atas Village	2° 29' 46.906" S	111° 42' 13.806" E
150.	Sisno	Kadipi Atas Village	2° 29' 46.919" S	111° 42' 23.209" E
			2° 30' 40.989" S	111° 41' 56.779" E
151.	Fatkhul Bashor	Kadipi Atas Village	2° 30' 7.319" S	111° 41' 51.536" E
152.	Wieldy Sejunzese	Kadipi Atas Village	2° 30' 7.494" S	111° 41' 55.856" E
153.	Sugeng Sasmito	Kadipi Atas Village	2° 29' 59.993" S	111° 41' 58.656" E
154.	Achmad Saifudin	Kadipi Atas Village	2° 30' 0.076" S	111° 42' 4.276" E
155.	YP Parjan	Kadipi Atas Village	2 °30' 0.181" S	111° 42' 12.914" E
156.	Gemi	Kadipi Atas Village	2° 30' 2.064" S	111 °41' 51.751" E
157.	Waidi	Kadipi Atas Village	2° 29' 59.897" S	111° 41' 55.851" E
158.	Parjo	Kadipi Atas Village	2° 29' 53.491" S	111° 41' 59.06" E
159.	Antonius Rudy. H	Kadipi Atas Village	2° 29' 53.631" S	111° 42' 5.948" E
160.	Jupri Efendi	Kadipi Atas Village	2° 30' 0.181" S	111° 42' 12.914" E
			2° 29' 5.765" S	111° 42' 46.393" E
161.	Widodo	Kadipi Atas Village	2° 30' 14.032" S	111° 41' 51.224" E
			2° 31' 13.424" S	111° 42' 46.237" E

			2° 31' 16.655" S	111° 42' 7.511" E
			2° 30' 39.970" S	111° 42' 46.381" E
162.	Suyana MP	Kadipi Atas Village	2° 30' 14.201" S	111° 41' 54.435" E
			2° 30' 14.307" S	111° 41' 57.52" E
163.	Jumali	Kadipi Atas Village	2° 30' 41.601" S	111° 42' 9.467" E
			2° 29' 3.992" S	111° 43' 18.367" E
164.	Tarno	Kadipi Atas Village	2° 30' 14.37" S	111° 42' 0.591" E
165.	Suhartiningrum	Kadipi Atas Village	2° 30' 14.498" S	111° 42' 3.69" E
			2° 30' 14.032" S	111° 41' 51.224" E
166.	Ady Hendratta	Kadipi Atas Village	2° 28' 35.037" S	111° 42' 56.381" E
167.	Waliman	Kadipi Atas Village	2° 30' 14.201" S	111° 41' 54.435" E
168.	Joko Utomo	Kadipi Atas Village	2° 30' 7.702" S	111° 41' 57.842" E
169.	Wagimin	Kadipi Atas Village	2° 30' 7.813" S	111° 42' 0.908" E
170.	Atiyah	Kadipi Atas Village	2° 30' 7.925" S	111° 42' 3.97" E
			2° 30' 27.519" S	111° 41' 50.913" E
			2° 29' 17.499" S	111° 43' 18.351" E
			2° 29' 17.493" S	111° 43' 21.497" E
171.	Sumarni	Kadipi Atas Village	2° 29' 17.487" S	111° 43' 24.611" E
			2° 29' 11.184" S	111° 43' 0.776" E
			2° 30' 27.772" S	111° 41' 57.284" E
			2° 29' 31.418" S	111° 43' 27.554" E
172.	Imam Budiyanto	Kadipi Atas Village	2° 30' 27.646" S	111° 41' 54.052" E
173.	Sujaman	Kadipi Atas Village	2° 30' 27.897" S	111° 42' 0.501" E
174.	Sudirman Sidik	Kadipi Atas Village	2° 30' 28.02" S	111° 42' 3.657" E
			2° 30' 28.143" S	111° 42' 6.8" E
			2° 30' 32.453" S	111° 43' 7.600" E
175.	Rebun Saputro	Kadipi Atas Village	2° 31' 8.540" S	111° 42' 21.654" E
			2° 31' 23.280" S	111° 43' 11.684" E
176.	Ratno	Kadipi Atas Village	2° 30' 28.394" S	111° 42' 13.246" E
177.	Sastro Suroso	Kadipi Atas Village	2° 30' 28.645" S	111° 42' 19.687" E
178.	Paijan	Kadipi Atas Village	2° 30' 28.768" S	111° 42' 22.843" E
179.	Suwardi	Kadipi Atas Village	2° 30' 28.888" S	111° 42' 25.925" E
180.	Mispan	Kadipi Atas Village	2° 30' 29.008" S	111° 42' 29.01" E
			2° 30' 29.098" S	111° 42' 32.02" E
			2° 28' 49.84" S	111° 42' 59.517" E
181.	Rohmat	Kadipi Atas Village	2° 29' 4.033" S	111° 43' 12.222" E
			2° 29' 31.414" S	111° 43' 24.562" E

182.	Mat Zaini	Kadipi Atas Village	2° 30' 21.498" S	111° 41' 57.616" E
183.	Mulyadi	Kadipi Atas Village	2° 30' 21.618" S	111° 42' 0.84" E
184.	Jumiati	Kadipi Atas Village	2° 30' 21.732" S	111° 42' 3.918" E
185.	Zainul Mustakim	Kadipi Atas Village	2° 30' 21.85" S	111° 42' 7.071" E
			2° 30' 46.589" S	111° 42' 32.648" E
		Sumber Agung Village	2° 32' 15.569" S	111° 42' 10.457" E
186.	Rudi Hartono	Kadipi Atas Village	2° 30' 21.972" S	111° 42' 10.364" E
187.	Yusworo	Kadipi Atas Village	2° 30' 22.087" S	111° 42' 13.45" E
188.	Misno Sahri	Kadipi Atas Village	2° 30' 22.204" S	111° 42' 16.603" E
189.	Hariyanto	Kadipi Atas Village	2° 30' 22.324" S	111° 42' 19.82" E
			2° 30' 55.76" S	111° 42' 12.796" E
			2° 28' 59.347" S	111° 42' 36.304" E
190.	Mudiyono	Kadipi Atas Village	2° 30' 22.558" S	111° 42' 26.13" E
			2° 30' 41.429" S	111° 42' 6.327" E
191.	Imam Syafi'i	Kadipi Atas Village	2° 30' 22.668" S	111° 42' 29.073" E
192.	Zainuddin	Kadipi Atas Village	2° 30' 22.782" S	111° 42' 32.161" E
193.	Drs. Sarwoto	Kadipi Atas Village	2° 30' 40.99" S	111° 41' 53.611" E
194.	Apik Husni Maarif	Kadipi Atas Village	2° 30' 40.989" S	111° 41' 56.779" E
			2° 29' 11.178" S	111° 43' 7.939" E
195.	Supriyadi	Kadipi Atas Village	2° 30' 41.09" S	111° 41' 59.919" E
196.	Sutini	Kadipi Atas Village	2° 30' 41.294" S	111° 42' 3.229" E
197.	Wiji	Kadipi Atas Village	2° 30' 41.803" S	111° 42' 15.883" E
198.	Kapiyah	Kadipi Atas Village	2° 30' 41.904" S	111° 42' 19.021" E
199.	Tariyah	Kadipi Atas Village	2° 30' 40.915" S	111° 41' 50.471" E
200.	Winarti	Kadipi Atas Village	2° 30' 40.99" S	111° 41' 53.611" E
201.	Sudadi	Kadipi Atas Village	2° 30' 41.294" S	111° 42' 3.229" E
202.	Pratowo Hadi Sumanto	Kadipi Atas Village	2° 30' 41.429" S	111° 42' 6.327" E
			2° 31' 20.313" S	111° 41' 56.294" E
			2° 28' 36.476" S	111° 43' 19.165" E
203.	Sutinah	Kadipi Atas Village	2° 30' 41.601" S	111° 42' 9.467" E
204.	Sari	Kadipi Atas Village	2° 30' 41.735" S	111° 42' 12.574" E
205.	Supirin	Kadipi Atas Village	2° 30' 41.803" S	111° 42' 15.883" E
206.	Siti Khodijah	Kadipi Atas Village	2° 30' 41.904" S	111° 42' 19.021" E
207.	Guntur	Kadipi Atas Village	2° 30' 48.708" S	111° 42' 21.694" E
208.	Mandhani	Kadipi Atas Village	2° 30' 54.94" S	111° 41' 49.855" E
209.	Sutiyem	Kadipi Atas Village	2° 30' 55.059" S	111° 41' 53.18" E
210.	Moch. Sindi	Kadipi Atas Village	2° 30' 55.174" S	111° 41' 56.41" E

			2° 31' 11.255" S	111° 42' 1.019" E
211.	H. Supardji	Kadipi Atas Village	2° 30' 55.296" S	111° 41' 59.82" E
212.	Rusmaulana	Kadipi Atas Village	2° 30' 55.412" S	111° 42' 3.046" E
213.	Mujiyati	Kadipi Atas Village	2° 30' 55.645" S	111° 42' 9.578" E
214.	Siti Chotimah	Kadipi Atas Village	2° 30' 55.874" S	111° 42' 15.983" E
215.	Sucipto	Kadipi Atas Village	2° 30' 55.984" S	111° 42' 19.045" E
216.	Nuryadi	Kadipi Atas Village	2° 30' 54.94" S	111° 41' 49.855" E
217.	Ferika Budi Asih	Kadipi Atas Village	2° 30' 55.059" S	111° 41' 53.18" E
218.	Rusmi	Kadipi Atas Village	2° 30' 55.174" S	111° 41' 56.41" E
219.	Cicilia Pidjath	Kadipi Atas Village	2° 30' 55.296" S	111° 41' 59.82" E
220.	Endang Supriyanti	Kadipi Atas Village	2° 30' 55.412" S	111° 42' 3.046" E
221.	Edy Purnomo	Kadipi Atas Village	2° 30' 55.529" S	111° 42' 6.329" E
222.	Melasati	Kadipi Atas Village	2° 30' 55.645" S	111° 42' 9.578" E
223.	Supadmi / Sulistiyo	Kadipi Atas Village	2° 30' 55.76" S	111° 42' 12.796" E
224.	Shoka	Kadipi Atas Village	2° 30' 55.874" S	111° 42' 15.983" E
225.	Daang Padoma	Kadipi Atas Village	2° 30' 55.984" S	111° 42' 19.045" E
226.	Karyadi / H. Sagi	Kadipi Atas Village	2° 30' 48.952" S	111° 42' 21.318" E
227.	Nuriah Purba	Kadipi Atas Village	2° 31' 20.314" S	111° 41' 54.316" E
228.	Nurmala Pangaribuan	Kadipi Atas Village	2° 31' 20.313" S	111° 41' 58.334" E
229.	Susilo	Kadipi Atas Village	2° 31' 20.315" S	111° 41' 49.196" E
230.	Sri Prasetyani	Kadipi Atas Village	2° 31' 18.695" S	111° 41' 49.177" E
231.	Buyung	Kadipi Atas Village	2° 31' 17.02" S	111° 41' 49.158" E
232.	Tri Bowo Kriswinarso	Kadipi Atas Village	2° 31' 14.916" S	111° 41' 49.106" E
			2° 31' 13.098" S	111° 41' 49.167" E
			2° 31' 11.246" S	111° 41' 49.229" E
			2° 28' 35.985" S	111° 43' 12.754" E
233.	Jarin	Kadipi Atas Village	2° 31' 1.962" S	111° 41' 54.49" E
234.	Wiyoto	Kadipi Atas Village	2° 31' 2.003" S	111° 41' 56.779" E
235.	Bejan Kun Prasetya	Kadipi Atas Village	2° 31' 11.855" S	111° 42' 3.395" E
236.	Deny Alamsyah	Kadipi Atas Village	2° 29' 0.165" S	111° 42' 26.161" E
			2° 28' 59.101" S	111° 42' 39.358" E
237.	Nurhadi	Kadipi Atas Village	2° 28' 59.877" S	111° 42' 29.735" E
			2° 28' 58.379" S	111° 42' 48.295" E
238.	Nurhadi Harto	Kadipi Atas Village	2° 28' 59.615" S	111° 42' 32.985" E
239.	Ahmad Sunarto	Kadipi Atas Village	2° 28' 58.839" S	111° 42' 42.595" E
			2° 28' 36.476" S	111° 43' 19.165" E
240.	Imam Kambali	Kadipi Atas Village	2° 28' 58.176" S	111° 42' 50.814" E

241.	Dwi Indriyanto	Kadipi Atas Village	2° 28' 57.857" S	111° 42' 54.774" E
242.	Saidi Jhoni. S	Kadipi Atas Village	2° 28' 35.037" S	111° 42' 56.381" E
243.	Y.B Zainanto H.B	Kadipi Atas Village	2° 28' 35.131" S	111° 42' 59.587" E
			2° 28' 36.729" S	111° 43' 22.471" E
244.	Siti Aminah	Kadipi Atas Village	2° 28' 35.226" S	111° 43' 2.843" E
245.	Siti Fatimah	Kadipi Atas Village	2° 28' 35.483" S	111° 43' 6.203" E
			2° 28' 49.84" S	111° 42' 59.517" E
246.	Siti Choiriah	Kadipi Atas Village	2° 28' 35.727" S	111° 43' 9.387" E
			2° 29' 3.992" S	111° 43' 18.367" E
247.	Rohimin	Kadipi Atas Village	2° 28' 36.232" S	111° 43' 15.975" E
248.	Hargono	Kadipi Atas Village	2° 28' 36.729" S	111° 43' 22.471" E
249.	Nur Hadi	Kadipi Atas Village	2° 28' 35.226" S	111° 43' 2.843" E
250.	Hadi Sumarno	Kadipi Atas Village	2° 28' 35.483" S	111° 43' 6.203" E
251.	Ervan Rasyid	Kadipi Atas Village	2° 28' 36.232" S	111° 43' 15.975" E
			2° 28' 50.11" S	111° 43' 13.583"E
252.	Sugin	Kadipi Atas Village	2° 28' 43.104" S	111° 43' 25.897" E
253.	Agus Subiyanto	Kadipi Atas Village	2° 28' 49.787" S	111° 42' 56.711" E
254.	B. Nurul Fatmi	Kadipi Atas Village	2° 28' 49.895" S	111° 43' 2.365" E
255.	Suparman Arif	Kadipi Atas Village	2° 28' 50.002" S	111° 43' 7.963" E
			2° 29' 31.409" S	111° 43' 21.301" E
256.	Achmad Misran	Kadipi Atas Village	2° 29' 12.845" S	111° 42' 8.754" E
			2° 28' 50.055" S	111° 43' 10.709" E
			2° 29' 4.133" S	111° 42' 56.98" E
257.	Mashuri	Kadipi Atas Village	2° 28' 50.11" S	111° 43' 13.583" E
258.	Waris Singarimbun	Kadipi Atas Village	2° 28' 50.161" S	111° 43' 16.237" E
259.	Novia Ari Wijayanti	Kadipi Atas Village	2° 28' 50.214" S	111° 43' 19.014" E
260.	H. Bandi	Kadipi Atas Village	2° 28' 50.269" S	111° 43' 21.894" E
261.	Sulastini	Kadipi Atas Village	2° 28' 50.323" S	111° 43' 24.71" E
262.	Turimin	Kadipi Atas Village	2° 28' 49.787" S	111° 42' 56.711" E
263.	Nimrot Pardede	Kadipi Atas Village	2° 28' 49.895" S	111° 43' 2.365" E
264.	Sareleh Saragih	Kadipi Atas Village	2° 28' 49.95" S	111° 43' 5.211" E
265.	Emi Maryani	Kadipi Atas Village	2° 28' 50.002" S	111° 43' 7.963" E
266.	Hendry H.	Kadipi Atas Village	2° 28' 50.055" S	111° 43' 10.709"E
267.	Darmo Ikromo	Kadipi Atas Village	2° 28' 50.161" S	111° 43' 16.237" E
			2° 29' 3.972" S	111° 43' 21.485"E
268.	Mahmud	Kadipi Atas Village	2° 28' 50.214" S	111° 43' 19.014" E
269.	Mu'tidah	Kadipi Atas Village	2° 28' 50.269" S	111° 43' 21.894" E

270.	Eliseba	Kadipi Atas Village	2° 29' 4.113" S	111° 42' 59.991" E
271.	Muhridwan	Kadipi Atas Village	2° 29' 4.093" S	111° 43' 3.08" E
272.	Moh. Nur Muklis	Kadipi Atas Village	2° 29' 4.073" S	111° 43' 6.076" E
273.	Dwi Nugroho	Kadipi Atas Village	2° 29' 4.053" S	111° 43' 9.134" E
274.	Nonia Harianja	Kadipi Atas Village	2° 29' 3.972" S	111° 43' 21.485" E
275.	Purwadi	Kadipi Atas Village	2° 29' 4.133" S	111° 42' 56.98" E
276.	Suradi	Kadipi Atas Village	2° 29' 4.113" S	111° 42' 59.991" E
			2° 29' 4.093" S	111° 43' 3.08" E
277.	Prasetyo	Kadipi Atas Village	2° 29' 4.073" S	111° 43' 6.076" E
278.	Chelie Eltya	Kadipi Atas Village	2° 29' 4.053" S	111° 43' 9.134" E
279.	Gunarti	Kadipi Atas Village	2° 29' 4.033" S	111° 43' 12.222" E
280.	Sutiyah	Kadipi Atas Village	2° 29' 4.012" S	111° 43' 15.341" E
281.	Sari P. Gatot	Kadipi Atas Village	2° 29' 17.537" S	111° 42' 57.36" E
282.	M. Rofi'i	Kadipi Atas Village	2° 29' 17.522" S	111° 43' 5.599" E
283.	Drs. Gst M. Suherman	Kadipi Atas Village	2° 29' 17.51" S	111° 43' 12.159" E
284.	Sri Esti Puji Lestari	Kadipi Atas Village	2° 29' 17.504" S	111° 43' 15.172" E
285.	Sugiono	Kadipi Atas Village	2° 29' 17.482" S	111° 43' 27.523" E
286.	Seniman	Kadipi Atas Village	2° 29' 17.537" S	111° 42' 57.36" E
287.	Suprpto	Kadipi Atas Village	2° 29' 17.504" S	111° 43' 15.172" E
288.	Dwi Sutantyo	Kadipi Atas Village	2° 29' 17.504" S	111° 43' 15.172" E
289.	Isnuyati	Kadipi Atas Village	2° 29' 11.169" S	111° 43' 18.683" E
290.	Solikin	Kadipi Atas Village	2° 29' 31.391" S	111° 43' 7.69" E
291.	Jarwan	Kadipi Atas Village	2° 29' 31.396" S	111° 43' 11.322" E
292.	Slamet Pujiyanto	Kadipi Atas Village	2° 29' 31.4" S	111° 43' 14.581" E
293.	Sukarno	Kadipi Atas Village	2° 29' 31.405" S	111° 43' 17.954" E
294.	Ali Rohmad	Kadipi Atas Village	2° 29' 31.409" S	111° 43' 21.301" E
295.	Mahdiansyah	Kadipi Atas Village	2° 29' 31.414" S	111° 43' 24.562" E
296.	Solarjono	Kadipi Atas Village	2° 29' 31.418" S	111° 43' 27.554" E
297.	Satimin	Kadipi Atas Village	2° 29' 31.391" S	111° 43' 7.69" E
298.	Suparlan	Kadipi Atas Village	2° 29' 31.396" S	111° 43' 11.322" E
299.	Rustam	Kadipi Atas Village	2° 29' 31.4" S	111° 43' 14.581" E
300.	Abdul Hafi Eka Sukma	Sumber Agung Village	2° 33' 20.199" S	111° 44' 34.813" E
301.	Yuli Askuri	Sumber Agung Village	2° 34' 2.734" S	111° 43' 41.004" E
			2° 33' 34.965" S	111° 43' 48.940" E
302.	Tuimun	Sumber Agung Village	2° 35' 6.795" S	111° 43' 38.132" E
303.	Hadi Suyitno	Sumber Agung Village	2° 33' 45.671" S	111° 44' 4.705" E
			2° 33' 37.832" S	111° 43' 36.062" E

304.	Purnomo Abdurrohlim Mursid	Sumber Agung Village	2° 33' 17.531" S	111° 43' 20.568" E
			2° 33' 18.480" S	111° 43' 18.189" E
			2° 33' 46.186" S	111° 43' 5.034" E
			2° 33' 47.535" S	111° 43' 7.068" E
			2° 33' 44.198" S	111° 43' 6.128" E
			2° 33' 19.694" S	111° 43' 43.260" E
			2° 33' 18.007" S	111° 43' 47.614" E
			2° 33' 18.829" S	111° 43' 45.553" E
			2° 33' 20.717" S	111° 43' 40.766" E
			2° 33' 21.687" S	111° 43' 37.984" E
			2° 33' 23.668" S	111° 43' 41.915" E
			2° 34' 5.791" S	111° 43' 34.633" E
			2° 33' 22.689" S	111° 43' 44.349" E
			2° 33' 51.161" S	111° 43' 52.168" E
			2° 33' 54.301" S	111° 43' 55.593" E
			2° 33' 19.438" S	111° 43' 15.871" E
			2° 33' 16.629" S	111° 43' 22.793" E
			2° 33' 52.189" S	111° 43' 56.018" E
		Pangkalan Durin Village	2° 34' 47.989" S	111° 44' 37.219" E
305.	Mahmud	Sumber Agung Village	2° 33' 40.858" S	111° 43' 34.770" E
			2° 34' 10.882" S	111° 43' 30.847" E
			2° 34' 12.661" S	111° 43' 33.332" E
			2° 34' 13.624" S	111° 43' 29.060" E
			2° 34' 15.218" S	111° 43' 31.562" E
			2° 34' 6.652" S	111° 43' 30.103" E
			2° 33' 48.635" S	111° 43' 46.707" E
			2° 33' 46.712" S	111° 43' 9.395" E
			2° 33' 45.933" S	111° 43' 11.700" E
			2° 33' 49.783" S	111° 43' 10.532" E
			2° 33' 53.079" S	111° 43' 9.207" E
			2° 33' 51.339" S	111° 43' 5.745" E
			2° 33' 55.284" S	111° 43' 4.024" E
			2° 33' 48.177" S	111° 43' 14.979" E
			2° 33' 49.008" S	111° 43' 12.780" E
			2° 33' 51.194" S	111° 43' 16.309" E
			2° 33' 53.799" S	111° 43' 27.542" E
			2° 33' 51.080" S	111° 43' 34.706" E

			2° 33' 50.775" S	111° 43' 45.357" E
			2° 33' 54.910" S	111° 43' 25.485" E
			2° 33' 52.566" S	111° 43' 29.862" E
306.	Sri Natun	Sumber Agung Village	2° 33' 33.706" S	111° 43' 25.392" E
		Sumber Agung Village	2° 33' 34.654" S	111° 43' 23.220" E
307.	Muhamad Nur Ali Fahrudin	Sumber Agung Village	2° 33' 19.343" S	111° 44' 14.985" E
308.	Muhtaromin	Sumber Agung Village	2° 33' 28.301" S	111° 44' 1.273" E
309.	Ahmad Marbani	Sungai Melawen Village	2° 31' 33.311" S	111° 45' 15.006" E
		Sungai Melawen Village	2° 31' 30.988" S	111° 45' 17.693" E
		Sungai Melawen Village	2° 31' 37.390" S	111° 45' 19.097" E
		Sungai Melawen Village	2° 31' 39.542" S	111° 45' 21.238" E
		Sungai Melawen Village	2° 31' 35.375" S	111° 45' 17.050" E
		Sungai Melawen Village	2° 31' 35.068" S	111° 45' 21.393" E
		Sungai Melawen Village	2° 31' 33.003" S	111° 45' 19.500" E
		Sumber Agung Village	2° 34' 35.683" S	111° 42' 52.209" E
		Sumber Agung Village	2° 32' 45.490" S	111° 44' 42.343" E
		Sungai Melawen Village	2° 31' 37.440" S	111° 45' 23.558" E
310.	Thurina Heru Budiantoro	Sungai Rangit Jaya Village	2° 33' 7.026" S	111° 44' 56.491" E
		Sumber Agung Village	2° 35' 8.404" S	111° 44' 17.374" E
		Pangkalan Durin Village	2° 35' 42.284" S	111° 44' 36.013" E
			2° 35' 43.473" S	111° 44' 34.368" E
311.	Agus Paenah	Sumber Agung Village	2° 35' 20.397" S	111° 43' 43.705" E
312.	Banu sutriyanto	Sumber Agung Village	2° 32' 54.040" S	111° 44' 23.153" E
			2° 33' 34.693" S	111° 44' 3.126" E
313.	M Rois	Sumber Agung Village	2° 33' 36.830" S	111° 44' 6.736" E
314.	Antan Supebri	Kadipi Atas Village	2° 30' 37.302" S	111° 42' 25.862" E
			2° 31' 24.521" S	111° 42' 36.273" E
			2° 30' 58.744" S	111° 43' 5.306" E
315.	Moh. Romli	Kadipi Atas Village	2° 31' 36.846" S	111° 42' 19.901" E
			2° 31' 37.651" S	111° 42' 43.067" E
			2° 31' 34.391" S	111° 42' 43.137" E
			2° 31' 18.407" S	111° 42' 36.384" E
316.	Sumoyadi	Kadipi Atas Village	2° 29' 30.352" S	111° 43' 3.177" E
			2° 30' 17.373" S	111° 42' 11.620" E
317.	Suyono	Kadipi Atas Village	2° 30' 33.694" S	111° 42' 54.799" E
318.	Ngatimin Susanto	Kadipi Atas Village	2° 31' 1.096" S	111° 42' 49.703" E
			2° 30' 57.523" S	111° 42' 53.014" E

319.	Haryanto	Sumber Agung Village	2° 31' 1.075" S	111° 42' 48.108" E
			2° 30' 45.467" S	111° 43' 3.954" E
			2° 32' 7.739" S	111° 42' 21.019" E
			2° 31' 2.679" S	111° 42' 49.651" E
			2° 32' 12.980" S	111° 42' 31.127" E
			2° 31' 12.374" S	111° 42' 27.238" E
320.	Suharno	Kadipi Atas Village	2° 31' 16.385" S	111° 42' 13.996" E
			2° 31' 45.414" S	111° 42' 41.276" E
			2° 30' 45.166" S	111° 43' 0.666" E
		Sumber Agung Village	2° 30' 41.680" S	111° 42' 58.546" E
			2° 32' 10.458" S	111° 42' 28.574" E
			2° 27' 5.367" S	111° 42' 41.504" E
321.	Kirmaji	Runtu Village	2° 27' 49.387" S	111° 42' 26.901" E
			2° 28' 14.804" S	111° 43' 36.608" E
		Makarti Jaya Village	2° 27' 11.995" S	111° 43' 56.468" E
			2° 31' 8.278" S	111° 42' 32.636" E
322.	Priyono	Kadipi Atas Village	2° 31' 37.078" S	111° 42' 26.492" E
			2° 30' 33.055" S	111° 42' 43.319" E
323.	Suratno	Kadipi Atas Village	2° 31' 18.126" S	111° 43' 13.482" E
			2° 31' 20.345" S	111° 43' 14.088" E
			2° 32' 3.939" S	111° 42' 26.261" E
			2° 31' 31.020" S	111° 42' 36.137" E
			2° 31' 19.508" S	111° 43' 17.187" E
			2° 31' 12.949" S	111° 43' 22.018" E
			2° 31' 46.091" S	111° 42' 28.679" E
			2° 31' 18.363" S	111° 42' 1.938" E
324.	Jati Suminto	Kadipi Atas Village	2° 30' 16.808" S	111° 42' 51.616" E
			2° 29' 9.548" S	111° 42' 38.160" E
			2° 29' 7.046" S	111° 42' 35.976" E
325.	Maju Hutaaruk	Kadipi Atas Village	2° 29' 7.164" S	111° 42' 29.442" E
			2° 30' 20.549" S	111° 42' 18.984" E
			2° 30' 20.408" S	111° 42' 15.270" E
			2° 30' 20.282" S	111° 42' 12.132" E
			2° 29' 12.904" S	111° 42' 41.534" E
			2° 29' 21.846" S	111° 42' 49.299" E
326.	Suharto	Kadipi Atas Village	2° 29' 25.030" S	111° 42' 49.552" E
			2° 29' 24.379" S	111° 42' 55.986" E
327.	YB. Zainanto Hari Widodo	Kadipi Atas Village		

			2° 29' 24.719" S	111° 42' 52.808" E
			2° 30' 17.121" S	111° 42' 8.490" E
1.5	Description of Area Statement			
1.5.1	Tenure			
	• State		- Ha	
	• Community		868.78 Ha	
1.5.2	Area Statement			
	• Total area		868.78 Ha	
	• Mature Area		868.78 Ha	
1.6.1	Age profile of planting year			
	Planting Year	Hectarage (Ha)		
		APKSM		Total
	1998	75.31	75.31	
	1999	307.86	307.86	
	2000	174.37	174.37	
	2001	36.13	36.13	
	2002	2.00	2.00	
	2003	3.97	3.97	
	2004	1.50	1.50	
	2005	13.78	13.78	
	2006	18.77	18.77	
	2007	11.76	11.76	
	2008	143.22	143.22	
	2009	10.05	10.05	
	2010	70.06	70.06	
	Sub Total Mature	868.78	868.78	
	-	-	-	
	Sub Total Immature	-	-	
	TOTAL	868.78	868.78	
	1.6.2	New Planting area after January 2010	- Ha	
1.6.3	Planting Cycle	1 st Cycle		
1.7	Description of Supply Base			
1.7.1	Description of Certification Scope of Supply Base			
	Name of Member Smallholder	Total Area (Ha)	Production Area (Ha)	FFB (tonnes/year)
				Yield (tonnes/ha/year)

Arif Mulyono	12.0290	12.0290	221.42	18.41
Bagiyoto	1.4918	1.4918	25.53	17.11
Boiman	1.0000	1.0000	14.21	14.21
Dirap. E	1.0000	1.0000	12.30	12.30
Edi Susilo	2.0000	2.0000	26.40	13.20
Imam Pamuji	4.7500	4.7500	94.80	19.96
Joko Purnomo	1.8998	1.8998	26.87	14.14
JP. ERIG. G. Simorangkir	1.5377	1.5377	27.69	18.00
Juari	1.0000	1.0000	18.78	18.78
Judin	1.0000	1.0000	12.90	12.90
Ketut Kudiana	1.5536	1.5536	18.47	11.89
Khamin	5.8171	5.8171	81.49	14.01
Kiswoto	0.6011	0.6011	10.42	17.34
Muryono	1.7500	1.7500	23.75	13.57
Nafi'i	3.4457	3.4457	55.59	16.13
Nardi	1.2500	1.2500	13.85	11.08
Pranyoto	3.0000	3.0000	34.37	11.46
Pulung	0.9715	0.9715	13.68	14.08
Sakur	3.1957	3.1957	42.14	13.19
Sanawi	1.5000	1.5000	24.69	16.46
Sareh	1.0000	1.0000	13.70	13.70
Sarjono	1.0000	1.0000	10.30	10.30
Seno	24.5807	24.5807	423.19	17.22
Sriyati	0.2500	0.2500	3.40	13.58
Suhadi	1.0000	1.0000	13.99	13.99
Sujarno	0.8000	0.8000	10.63	13.29
Suman	1.0000	1.0000	10.65	10.65
Sumindar	2.0000	2.0000	28.81	14.41
Sumoro	8.2232	8.2232	110.69	13.46
Supandi	3.8058	3.8058	49.91	13.11
Suparmi	1.0000	1.0000	15.84	15.84
Suparto	3.0000	3.0000	51.32	17.11
Suryansyah	0.5415	0.5415	6.53	12.05
Suwadi	2.0000	2.0000	28.49	14.24
Suwandi	0.8000	0.8000	10.52	13.15
Suyadi	3.9212	3.9212	71.06	18.12
Suyitno	1.0000	1.0000	14.14	14.14
Taswi	1.0000	1.0000	13.17	13.17
Triyono	3.9025	3.9025	51.37	13.16
Tukiman	1.2500	1.2500	19.10	15.28
Tukino	1.2500	1.2500	13.95	11.16
Ujang Suryana	1.0000	1.0000	11.01	11.01
Yatimin	1.0000	1.0000	13.01	13.01
Marlan	2.7479	2.7479	30.51	11.10
Khoirudin	2.0292	2.0292	14.89	7.34
Rosdiana Melva	2.0384	2.0384	17.08	8.38
Kisdiyanto	1.9295	1.9295	13.93	7.22

Painah	1.9712	1.9712	15.77	8.00
Hj. Noor Asiah H.S	1.9996	1.9996	14.42	7.21
Winata Mihel	2.0240	2.0240	12.95	6.40
Iman Aminullah	2.0000	2.0000	18.86	9.43
Sri Utami	1.9470	1.9470	16.41	8.43
Lamsir Sianturi	2.1019	2.1019	18.64	8.87
Giran Agus Widodo	1.9936	1.9936	16.43	8.24
Suparni	2.0160	2.0160	14.78	7.33
Abd. Munif	1.9800	1.9800	13.90	7.02
Sri Utami	1.9647	1.9647	15.27	7.77
Ahmad Saifudin	1.9996	1.9996	16.38	8.19
Parmun	1.9959	1.9959	15.63	7.83
Kitman	1.9735	1.9735	18.63	9.44
Bowo	1.9936	1.9936	14.39	7.22
Subakir	2.0086	2.0086	16.95	8.44
Hafis	1.9936	1.9936	19.24	9.65
Karsono Hadi	2.0160	2.0160	13.39	6.64
Sriyatni	2.0475	2.0475	15.21	7.43
Tumijan	1.9980	1.9980	17.72	8.87
Sulkan	1.9959	1.9959	16.45	8.24
Wahyudi	1.9825	1.9825	14.53	7.33
Supriono	2.0292	2.0292	14.24	7.02
Sukadi	2.0070	2.0070	13.59	6.77
Sukeri	1.7440	1.7440	10.80	6.19
M. Khoiruddin	1.9959	1.9959	18.82	9.43
Poniman	1.9712	1.9712	16.62	8.43
Mustakim	1.9825	1.9825	17.58	8.87
Sri Utami	1.9800	1.9800	16.32	8.24
Sudarmono	2.0160	2.0160	18.81	9.33
Parjiyo	1.9936	1.9936	14.00	7.02
Sri Utami	2.0292	2.0292	17.80	8.77
Karmudi	2.0240	2.0240	16.58	8.19
Budiman	2.0000	2.0000	17.66	8.83
Khoirun	2.0000	2.0000	18.04	9.02
Achmad Misran	2.0000	2.0000	13.54	6.77
Ponimin	1.9800	1.9800	16.22	8.19
Sri Utami	1.9825	1.9825	16.71	8.43
Reza Alamsyah	1.9712	1.9712	14.45	7.33
Yunanto	1.9360	1.9360	16.15	8.34
Iman Aminullah	2.0000	2.0000	16.76	8.38
Imam Widodo	2.0000	2.0000	14.44	7.22
Sri Utami	2.0240	2.0240	16.19	8.00
Boy Iskandar	2.0000	2.0000	14.42	7.21
Abdul Khobar	2.0270	2.0270	12.97	6.40
Wahyudi	2.0306	2.0306	19.15	9.43
Tri Haryati	2.0384	2.0384	17.18	8.43
M. Suryono Kamdani	1.9470	1.9470	17.27	8.87

Sagi	2.0000	2.0000	16.48	8.24
Sukirah	1.9996	1.9996	14.66	7.33
Boy Iskandar	1.9936	1.9936	14.00	7.02
Wahyu Ningsih	2.0000	2.0000	13.54	6.77
Suparman Dika	2.0384	2.0384	16.69	8.19
Suwarno	2.0000	2.0000	17.66	8.83
Suwarno	1.9470	1.9470	13.67	7.02
Murjito	2.1280	2.1280	18.66	8.77
Wahyudi Wiwaha	1.9712	1.9712	12.20	6.19
Agung Sri Wahono	1.9996	1.9996	18.88	9.44
Suwasno	2.0000	2.0000	14.44	7.22
Sugiyanto	1.9996	1.9996	18.48	9.24
Marijo	2.0000	2.0000	14.66	7.33
Wely	1.9980	1.9980	14.03	7.02
Sartono	1.9936	1.9936	17.68	8.87
Sugiyanto	2.0240	2.0240	18.70	9.24
M. Romli	1.9350	1.9350	14.18	7.33
Suparman Jadi	2.0000	2.0000	14.04	7.02
Pujianto	1.9800	1.9800	13.40	6.77
Sugiyanto	2.0475	2.0475	18.82	9.19
M. Baedowi	1.9712	1.9712	19.38	9.83
Taruni	1.9314	1.9314	18.23	9.44
Sukarsih	2.1693	2.1693	15.66	7.22
Drs. Regol Cikar	1.9996	1.9996	16.48	8.24
Sudarno	2.0292	2.0292	14.87	7.33
Sugiyanto	1.9996	1.9996	14.04	7.02
Heriyanto	1.9584	1.9584	17.18	8.77
M. Yusran	2.1179	2.1179	17.35	8.19
Sri Utami	1.9936	1.9936	17.60	8.83
Sugiyanto	1.9980	1.9980	16.02	8.02
Sisno	1.9712	1.9712	15.81	8.02
Fatkhul Bashor	2.2620	2.2620	14.11	6.24
Wieldy Sejanzese	2.0292	2.0292	14.87	7.33
Sugeng Sasmito	1.9314	1.9314	13.56	7.02
Sugiyanto	2.1170	2.1170	18.57	8.77
Achmad Saifudin	2.0114	2.0114	16.96	8.43
Sagi	1.9314	1.9314	17.13	8.87
YP Parjan	1.9295	1.9295	15.90	8.24
Gemi	1.9996	1.9996	14.66	7.33
Sagi	1.9936	1.9936	17.68	8.87
Waidi	1.9470	1.9470	16.04	8.24
Parjo	1.9800	1.9800	14.51	7.33
Drs. Regol Cikar	1.9981	1.9981	14.03	7.02
Antonius Rudy. H	1.9936	1.9936	13.50	6.77
Lamsir Sianturi	1.9825	1.9825	16.71	8.43
Jupri Efendi	1.9959	1.9959	17.70	8.87
Sagi	1.9295	1.9295	15.90	8.24

Suwasno	1.9314	1.9314	12.23	6.33
Widodo	1.9295	1.9295	17.06	8.84
Suyana MP	1.9825	1.9825	14.91	7.52
Jumali	1.9936	1.9936	16.83	8.44
Tarno	1.9825	1.9825	13.42	6.77
Suhartiningrum	1.9712	1.9712	12.20	6.19
Ady Hendratta	1.9936	1.9936	13.62	6.83
Waliman	1.9530	1.9530	16.48	8.44
Joko Utomo	2.0000	2.0000	12.38	6.19
Wagimin	1.9470	1.9470	17.19	8.83
Atiyah	1.9360	1.9360	18.68	9.65
Sumarni	2.0115	2.0115	18.79	9.34
Imam Budiyanto	1.9712	1.9712	16.52	8.38
Sumarni	1.9314	1.9314	13.94	7.22
Sujaman	1.9712	1.9712	15.77	8.00
Sudirman Sidik	1.9360	1.9360	13.96	7.21
Rebun Saputro	1.9470	1.9470	12.46	6.40
Sagi	1.9996	1.9996	18.86	9.43
Ratno	1.9936	1.9936	16.81	8.43
Suwarno	2.0160	2.0160	17.88	8.87
Sastro Suroso	2.0000	2.0000	16.48	8.24
Paijan	2.0292	2.0292	14.87	7.33
Suwardi	1.9936	1.9936	14.00	7.02
Mispan	1.9998	1.9998	17.54	8.77
Rohmat	1.9936	1.9936	16.33	8.19
Suwarno	1.9996	1.9996	17.66	8.83
Sagi	1.9936	1.9936	14.00	7.02
Mat Zaini	2.1436	2.1436	18.80	8.77
Mulyadi	1.9350	1.9350	15.85	8.19
Jumiati	1.9936	1.9936	16.81	8.43
Zainul Mustakim	1.9470	1.9470	17.27	8.87
Rudi Hartono	1.9959	1.9959	12.45	6.24
Yusworo	2.0000	2.0000	14.66	7.33
Misno Sahri	1.9980	1.9980	16.02	8.02
Hariyanto	1.9584	1.9584	17.18	8.77
Sugiyanto	1.9314	1.9314	15.82	8.19
Mudiyono	1.9584	1.9584	16.98	8.67
Imam Syafi'i	2.0091	2.0091	17.74	8.83
Zainuddin	1.9647	1.9647	13.79	7.02
Pujianto	1.9735	1.9735	14.47	7.33
Drs. Sarwoto	2.2351	2.2351	15.69	7.02
Apik Husni. M	2.1231	2.1231	19.47	9.17
Supriyadi	2.0292	2.0292	18.45	9.09
Sutini	1.7440	1.7440	16.45	9.43
Mudiyono	1.9712	1.9712	16.62	8.43
Jumali	2.0000	2.0000	17.74	8.87
Heriyanto	2.0240	2.0240	12.63	6.24

Wiji	1.9295	1.9295	14.14	7.33
Kapiyah	1.9900	1.9900	13.97	7.02
Tariyah	2.0160	2.0160	12.48	6.19
Winarti	2.0000	2.0000	13.66	6.83
Sisno	1.9350	1.9350	18.27	9.44
Suwarno	1.9647	1.9647	14.19	7.22
Sudadi	1.9959	1.9959	12.45	6.24
Pratowo Hadi Sumanto	2.0000	2.0000	14.66	7.33
Sutinah	1.9980	1.9980	14.03	7.02
Sari	1.9936	1.9936	19.48	9.77
Supirin	2.0292	2.0292	18.65	9.19
Siti Khodijah	1.9647	1.9647	19.12	9.73
Guntur	2.1330	2.1330	14.97	7.02
Mandhani	2.0240	2.0240	19.09	9.43
Sutiyem	1.9825	1.9825	16.71	8.43
Moch. Sindi	1.9712	1.9712	17.48	8.87
H. Supardji	1.9735	1.9735	12.31	6.24
Rusmaulana	2.0000	2.0000	14.66	7.33
Winata Mihel	1.9980	1.9980	14.03	7.02
Mujiyati	1.9936	1.9936	13.50	6.77
Hariyanto	2.0045	2.0045	18.42	9.19
Siti Chotimah	1.9712	1.9712	17.41	8.83
Sucipto	2.0240	2.0240	14.21	7.02
Nuryadi	1.9936	1.9936	19.48	9.77
Ferika Budi Asih	2.0270	2.0270	18.63	9.19
Rusmi	1.9295	1.9295	16.27	8.43
Cicilia Pidjath	1.9936	1.9936	17.68	8.87
Endang Supriyanti	1.9840	1.9840	18.33	9.24
Edy Purnomo	1.9712	1.9712	14.45	7.33
Melasati	1.9584	1.9584	13.75	7.02
Supadmi / Sulistiyo	2.0000	2.0000	13.54	6.77
Shoka	1.9936	1.9936	12.34	6.19
Daang Padoma	1.9996	1.9996	17.66	8.83
Karyadi / H. Sagi	1.9847	1.9847	13.93	7.02
Lamsir Sianturi	1.9825	1.9825	13.74	6.33
Suwarno	2.0384	2.0384	14.13	7.33
Lamsir Sianturi	1.9936	1.9936	13.82	6.29
Nuriah Purba	2.0240	2.0240	14.03	6.93
Pratowo Hadi Sumanto	2.0000	2.0000	13.86	8.43
Nurmala Pangaribuan	2.0000	2.0000	18.88	9.44
Susilo	1.9959	1.9959	15.41	7.72
Sri Prasetyani	2.0475	2.0475	17.28	8.44
Buyung	2.0000	2.0000	15.52	7.76
Tri Bowo Kriswinarso	1.9936	1.9936	12.34	6.19
Tri Bowo Kriswinarso	2.0240	2.0240	17.87	8.83
Tri Bowo Kriswinarso	1.9712	1.9712	18.61	9.44
Jarin	2.0160	2.0160	12.48	6.19

Wiyoto	2.0000	2.0000	13.66	6.83
Sukadi	1.9712	1.9712	19.02	9.65
Moch. Sindi	1.9959	1.9959	13.63	6.83
Suwarno	2.0475	2.0475	19.33	9.44
Bejan Kun Prasetya	2.0293	2.0293	12.56	6.19
Deny Alamsyah	1.9996	1.9996	14.04	7.02
Nurhadi	2.0000	2.0000	19.54	9.77
Nurhadi Harto	1.9735	1.9735	18.14	9.19
Hariyanto	2.1280	2.1280	16.66	7.83
Deny Alamsyah	1.9936	1.9936	14.00	7.02
Ahmad Sunarto	1.9712	1.9712	19.26	9.77
Jupri Efendi	2.0000	2.0000	18.38	9.19
Nurhadi	2.0042	2.0042	16.90	8.43
Imam Kambali	2.0292	2.0292	18.00	8.87
Sukadi	1.9825	1.9825	13.16	6.64
Dwi Indriyanto	1.9900	1.9900	14.59	7.33
Saidi Jhoni. S	1.9936	1.9936	13.64	6.84
Y.B Zainanto H.B	2.0000	2.0000	14.38	7.19
Siti Aminah	1.9470	1.9470	16.41	8.43
Siti Fatimah	2.0270	2.0270	17.98	8.87
Siti Choiriah	2.0000	2.0000	12.48	6.24
Sukadi	2.0000	2.0000	14.04	7.02
Rohimin	1.9350	1.9350	15.03	7.77
Ahmad Sunarto	1.9847	1.9847	14.27	7.19
Hargono	2.1330	2.1330	16.70	7.83
Ady Hendratta	2.0292	2.0292	14.24	7.02
Sartono	2.1163	2.1163	14.33	6.77
Nur Hadi	1.9295	1.9295	13.87	7.19
Hadi Sumarno	1.9584	1.9584	16.51	8.43
Boy Iskandar	1.9936	1.9936	14.39	7.22
Tri Bowo Kriswinarso	1.9840	1.9840	14.36	7.24
Ervan Rasyid	2.0000	2.0000	14.66	7.33
Pratowo Hadi Sumanto	2.0000	2.0000	15.04	7.52
Y.B Zainanto H.B	2.0000	2.0000	14.86	7.43
Sugin	2.0000	2.0000	13.98	6.99
Agus Subiyanto	1.9980	1.9980	18.86	9.44
Siti Fatimah	1.9959	1.9959	14.41	7.22
B. Nurul Fatmi	2.0384	2.0384	12.72	6.24
Drs. Regol Cikar	1.9959	1.9959	14.63	7.33
Suparman Arif	1.9981	1.9981	14.03	7.02
Achmad Misran	1.9998	1.9998	17.74	8.87
Mashuri	2.0160	2.0160	14.15	7.02
Waris Singarimbun	1.9470	1.9470	17.08	8.77
Novia Ari Wijayanti	1.9747	1.9747	16.17	8.19
H. Bandi	2.0240	2.0240	17.87	8.83
Sulastini	1.9350	1.9350	13.58	7.02
Turimin	2.0240	2.0240	17.75	8.77

Rohmat	2.1280	2.1280	14.94	7.02
Nimrot Pardede	1.9712	1.9712	13.35	6.77
Sareleh Saragih	1.9998	1.9998	16.38	8.19
Emi Maryani	2.0270	2.0270	13.84	6.83
Hendry H.	2.1330	2.1330	14.97	7.02
Ervan Rasyid	2.0240	2.0240	17.75	8.77
Darmo Ikromo	2.0000	2.0000	16.38	8.19
Mahmud	1.9980	1.9980	16.84	8.43
Mu'tidah	1.9996	1.9996	14.04	7.02
Achmad Misran	2.0000	2.0000	14.04	7.02
Eliseba	1.9295	1.9295	14.99	7.77
Muhridwan	1.9936	1.9936	14.93	7.49
Moh. Nur Muklis	1.9936	1.9936	17.40	8.73
Dwi Nugroho	1.9980	1.9980	13.88	6.94
Rohmat	2.1330	2.1330	16.25	7.62
Drs. Regol Cikar	1.9936	1.9936	15.89	7.97
Jumali	2.0000	2.0000	16.78	8.39
Nonia Harianja	1.9712	1.9712	15.43	7.83
Purwadi	1.9584	1.9584	14.92	7.62
Suradi	2.0000	2.0000	15.54	7.77
Suradi	2.0240	2.0240	14.55	7.19
Prasetyo	1.9980	1.9980	16.84	8.43
Chelie Eltya	1.9492	1.9492	17.29	8.87
Gunarti	2.0000	2.0000	14.48	7.24
Sutiyah	1.9735	1.9735	14.47	7.33
Siti Choiriah	1.9735	1.9735	13.71	6.94
Darmo Ikromo	2.0070	2.0070	13.94	6.94
Sari P. Gatot	2.0000	2.0000	12.80	6.40
M. Rofi'i	2.0457	2.0457	19.29	9.43
Drs. Regol Cikar	1.9996	1.9996	16.86	8.43
Drs. Gst M. Suherman	2.0240	2.0240	17.95	8.87
Sri Esti Puji Lestari	2.0292	2.0292	12.66	6.24
Sumarni	2.1330	2.1330	15.63	7.33
Sumarni	1.9936	1.9936	14.00	7.02
Sumarni	2.0842	2.0842	14.11	6.77
Sugiono	2.0000	2.0000	12.38	6.19
Seniman	2.0160	2.0160	13.77	6.83
Sumarni	1.9980	1.9980	14.03	7.02
Abd. Munif	1.9980	1.9980	19.52	9.77
Apik Husni Maarif	1.9314	1.9314	17.75	9.19
Suprpto	1.9584	1.9584	16.51	8.43
Dwi Sutantyo	1.9360	1.9360	16.01	8.27
Isnuyati	2.0292	2.0292	14.04	6.92
Abd. Munif	1.9735	1.9735	18.24	9.24
Solikin	1.9350	1.9350	14.18	7.33
Jarwan	2.1280	2.1280	14.94	7.02
Slamet Pujiyanto	2.0240	2.0240	16.74	8.27

	Sukarno	2.0292	2.0292	18.65	9.19
	Ali Rohmad	1.9712	1.9712	18.59	9.43
	Mahdiansyah	2.0000	2.0000	16.86	8.43
	Solarjono	1.9936	1.9936	16.49	8.27
	Satimin	1.9360	1.9360	12.08	6.24
	Suparlan	2.0000	2.0000	14.66	7.33
	Rustam	1.9980	1.9980	14.03	7.02
	Sugiyanto	1.9735	1.9735	18.14	9.19
	Suparman Arif	2.0000	2.0000	19.66	9.83
	Rohmat	2.0384	2.0384	19.24	9.44
	Sumarni	2.1400	2.1400	15.45	7.22
	TOTAL	710.5447	710.5447	6,489.80	9.13
1.8	Tonnage of Product				
1.8.1	Past Annual Claim Certified Product	Last Year Projected Certified Volume (MT)		Last Year Actual Certified Volume (mm yy to mm yy) (MT)	
	• FFB Production	6,505		6,489.80	
	• CSPO Production	1,301		1,297.96	
	• CSPKE Production	146		146.02	
	• CSPKO Production	178		178.47	
1.8.2	Product selling				
	Tonnage of selling product		Period of actual selling product of December 2019 to November 2020		
	• CSPO sold as RSPO certified product		-		
	• CSPK sold as RSPO certified product		-		
	• CSPO sold under other scheme		-		
	• CSPK sold under other scheme		-		
	• CSPO sold as conventional		-		
	• CSPK sold as conventional		-		
1.8.3	Estimate Certified FFB Claim				
	Name Member of Smallholders	Total Area (Ha)	Production Area (Ha)	FFB (tonnes/year)	Yield (tonnes/ha/year)
1.	Suryansyah	0.5415	0.5415	6.98	12.89
2.	Sarjono	1.0000	1.0000	11.02	11.02
3.	Pulung	0.9715	0.9715	14.64	15.07
4.	Yatimin	3.0000	3.0000	43.46	14.49
5.	Tukiman	1.2500	1.2500	20.43	16.34
6.	Suparto	3.0000	3.0000	54.91	18.30
7.	Sareh	1.0000	1.0000	14.66	14.66
8.	Muryono	1.7500	1.7500	25.41	14.52
9.	Nardi	1.2500	1.2500	14.82	11.86
10.	Sujarno	0.8000	0.8000	11.38	14.23
11.	Suman	1.0000	1.0000	11.40	11.40

12.	Sriyati	0.2500	0.2500	3.63	14.52
13.	Nafi'i	3.4457	3.4457	59.48	17.26
14.	Sanawi	1.5000	1.5000	26.41	17.61
15.	Suwadi	2.0000	2.0000	30.48	15.24
16.	Judin	1.0000	1.0000	13.80	13.80
17.	Suparmi	1.0000	1.0000	16.95	16.95
18.	Boiman	1.0000	1.0000	15.20	15.20
19.	Ujang Suryana	1.0000	1.0000	11.78	11.78
20.	Bagiyoto	1.4918	1.4918	27.31	18.31
21.	Ketut Kudiana	1.5536	1.5536	19.77	12.73
22.	Taswi	1.0000	1.0000	14.10	14.10
23.	Khamin	5.8171	5.8171	87.20	14.99
24.	Juari	1.0000	1.0000	20.09	20.09
25.	Tukino	1.2500	1.2500	14.93	11.94
26.	Imam Pamuji	4.7500	4.7500	101.43	21.35
27.	Suhadi	1.0000	1.0000	14.97	14.97
28.	Sumindar	2.0000	2.0000	30.83	15.42
29.	JP. ERIG. G. Simorangkir	1.5377	1.5377	29.62	19.26
30.	Supandi	3.8058	3.8058	53.41	14.03
31.	Sakur	3.1957	3.1957	45.09	14.11
32.	Pranyoto	3.0000	3.0000	36.78	12.26
33.	Arif Mulyono	12.0290	12.0290	236.92	19.70
34.	Edi Susilo	2.0000	2.0000	28.25	14.13
35.	Seno	24.5807	24.5807	452.81	18.42
36.	Suyadi	3.9212	3.9212	76.03	19.39
37.	Suyitno	1.0000	1.0000	15.13	15.13
38.	Suwandi	0.8000	0.8000	11.26	14.08
39.	Triyono	3.9025	3.9025	54.96	14.08
40.	Kiswoto	0.6011	0.6011	11.15	18.55
41.	Dirap. E	1.0000	1.0000	13.16	13.16
42.	Joko Purnomo	1.8998	1.8998	28.75	15.13
43.	Sumoro	8.2232	8.2232	118.44	14.40
44.	Marlan	2.7479	2.7479	32.65	11.88
45.	Ramli	3.0490	3.0490	34.45	11.30
46.	Ahmad Rifani	0.5400	0.5400	9.12	16.89
47.	Fita Sari Ningsih	1.7221	1.7221	24.83	14.42
48.	Salwiyah	0.1960	0.1960	3.28	16.73
49.	Indarti	3.1880	3.1880	28.87	9.06
50.	Makruf Asrobi	0.5089	0.5089	7.85	15.43

51.	Juremi	3.2098	3.2098	33.64	10.48
52.	Heni Suprianto	1.2563	1.2563	22.28	17.73
53.	Ali Bustommy	1.0000	1.0000	15.32	15.32
54.	Saeroji	2.7500	2.7500	30.08	10.94
55.	Supriyanto	2.3258	2.3258	30.56	13.14
56.	Siswati	0.8417	0.8417	15.98	18.99
57.	Muhammad Muhsin Adi	1.0000	1.0000	13.08	13.08
58.	Purnomo	0.2417	0.2417	4.73	19.57
59.	Jarkasi	1.7500	1.7500	25.40	14.51
60.	Junaidi	1.7436	1.7436	25.05	14.37
61.	Jasmi	1.8260	1.8260	28.82	15.78
62.	Nasirin	1.5000	1.5000	27.09	18.06
63.	Pariyono	1.0000	1.0000	10.99	10.99
64.	Sutikno	0.7667	0.7667	12.65	16.50
65.	Samini	1.0000	1.0000	16.28	16.28
66.	Sumeh	1.0000	1.0000	15.33	15.33
67.	Slamet Riyanto	0.4764	0.4764	7.71	16.18
68.	Marinem	1.0000	1.0000	12.85	12.85
69.	Rusdi	0.6795	0.6795	13.48	19.84
70.	Sriwati	1.0000	1.0000	16.74	16.74
71.	Nardi Sugito	0.8017	0.8017	11.61	14.48
72.	Suharti	0.9704	0.9704	8.88	9.15
73.	Mujini	1.3333	1.3333	9.20	6.90
74.	Fatkur Rohman	0.7900	0.7900	8.80	11.14
75.	Putri Inlia Andriani	0.8938	0.8938	12.40	13.87
76.	Sudarmo	0.8716	0.8716	12.50	14.34
77.	Prawoto	0.2526	0.2526	3.61	14.29
78.	Misni	1.5927	1.5927	25.53	16.03
79.	Nafidlotul Sarofah	1.0000	1.0000	20.78	20.78
80.	Warnuji	1.8977	1.8977	25.78	13.58
81.	Ramu Mulyati	0.3700	0.3700	5.24	14.16
82.	Tuningah	0.2500	0.2500	3.75	15.00
83.	Miseran	1.7500	1.7500	18.75	10.71
84.	Tarmini	1.0000	1.0000	12.89	12.89
85.	Khoirudin	2.0292	2.0292	15.79	7.78
86.	Rosdiana Melva	2.0384	2.0384	18.11	8.88
87.	Kisdiyanto	1.9295	1.9295	14.77	7.65
88.	Painah	1.9712	1.9712	16.72	8.48
89.	Hj. Noor Asiah H.S	1.9996	1.9996	15.28	7.64

90.	Winata Mihel	4.0020	4.0020	28.74	7.18
91.	Iman Aminullah	4.0000	4.0000	36.76	9.19
92.	Sri Utami	13.9210	13.9210	113.97	8.19
93.	Lamsir Sianturi	8.0605	8.0605	66.96	8.31
94.	Giran Agus Widodo	1.9936	1.9936	17.41	8.73
95.	Suparni	2.0160	2.0160	15.66	7.77
96.	Abd. Munif	3.9515	3.9515	55.13	13.95
97.	Ahmad Saifudin	1.9996	1.9996	17.36	8.68
98.	Parmun	1.9959	1.9959	16.57	8.30
99.	Kitman	1.9735	1.9735	19.75	10.01
100.	Bowo	1.9936	1.9936	15.26	7.65
101.	Subakir	2.0086	2.0086	17.97	8.95
102.	Hafis	2.0086	2.0086	20.39	10.15
103.	Karsono Hadi	2.0160	2.0160	14.19	7.04
104.	Sriyati	2.0475	2.0475	16.13	7.88
105.	Tumijan	1.9980	1.9980	18.79	9.40
106.	Sulkan	1.9959	1.9959	17.43	8.73
107.	Wahyudi	4.0131	4.0131	35.70	8.90
108.	Supriono	2.0292	2.0292	15.10	7.44
109.	Sukadi	7.9607	7.9607	63.50	7.98
110.	Sukeri	1.7440	1.7440	11.44	6.56
111.	M. Khoiruddin	1.9959	1.9959	19.95	10.00
112.	Poniman	1.9712	1.9712	17.61	8.93
113.	Mustakim	1.9825	1.9825	18.64	9.40
114.	Sudarmono	2.0160	2.0160	19.94	9.89
115.	Parjiyo	1.9936	1.9936	14.83	7.44
116.	Karmudi	2.0240	2.0240	17.57	8.68
117.	Budiman	2.0000	2.0000	18.72	9.36
118.	Khoirun	2.0000	2.0000	19.12	9.56
119.	Ponimin	1.9800	1.9800	17.19	8.68
120.	Reza Alamsyah	1.9712	1.9712	15.32	7.77
121.	Yunanto	1.9360	1.9360	17.12	8.84
122.	Imam Widodo	2.0000	2.0000	15.31	7.66
123.	Boy Iskandar	5.9872	5.9872	45.52	7.60
124.	Abdul Khobar	2.0270	2.0270	13.75	6.78
125.	Tri Haryati	2.0384	2.0384	18.21	8.93
126.	M. Suryono Kamdani	1.9470	1.9470	18.31	9.40
127.	Sagi	11.8477	11.8477	106.04	8.95
128.	Sukirah	1.9996	1.9996	15.54	7.77

129.	Wahyu Ningsih	2.0000	2.0000	14.35	7.18
130.	Suparman Dika	2.0384	2.0384	8.68	4.26
131.	Suwarno	14.0132	14.0132	121.86	8.70
132.	Murjito	2.1280	2.1280	19.78	9.30
133.	Wahyudi Wiwaha	1.9712	1.9712	12.93	6.56
134.	Agung Sri Wahono	1.9996	1.9996	20.01	10.01
135.	Suwasno	7.4281	7.4281	93.79	12.63
136.	Sugiyanto	16.0906	16.0906	147.08	9.14
137.	Marijo	2.0000	2.0000	15.54	7.77
138.	Wely	1.9980	1.9980	14.87	7.44
139.	Sartono	4.1099	4.1099	24.73	6.02
140.	M. Romli	1.9350	1.9350	15.03	7.77
141.	Suparman Jadi	2.0000	2.0000	14.88	7.44
142.	Pujianto	3.9535	3.9535	29.69	7.51
143.	M. Baedowi	1.9712	1.9712	20.54	10.42
144.	Taruni	1.9314	1.9314	19.33	10.01
145.	Sukarsih	2.1693	2.1693	16.60	7.65
146.	Drs. Regol Cikar	1.9996	9.9868	83.03	8.31
147.	Sudarno	2.0292	2.0292	15.77	7.77
148.	Heriyanto	1.9584	3.9824	31.72	7.97
149.	M. Yusran	2.1179	2.1179	18.39	8.68
150.	Sisno	1.9712	3.9062	36.31	9.30
151.	Fatkul Bashor	2.2620	2.2620	14.96	6.61
152.	Wieldy Sejanzese	2.0292	2.0292	15.77	7.77
153.	Sugeng Sasmito	1.9314	1.9314	14.37	7.44
154.	Achmad Saifudin	2.0114	2.0114	17.97	8.93
155.	YP Parjan	1.9295	1.9295	16.85	8.73
156.	Gemi	1.9996	1.9996	15.54	7.77
157.	Waidi	1.9470	1.9470	17.01	8.74
158.	Parjo	1.9800	1.9800	15.38	7.77
159.	Antonius Rudy. H	1.9936	1.9936	14.31	7.18
160.	Jupri Efendi	1.9959	3.9959	38.44	9.62
161.	Widodo	1.9295	4.1795	48.97	11.72
162.	Suyana MP	1.9825	1.9825	15.80	7.97
163.	Jumali	1.9936	5.9936	54.77	9.14
164.	Tarno	1.9825	1.9825	14.23	7.18
165.	Suhartiningrum	1.9712	1.9712	12.93	6.56
166.	Ady Hendratta	1.9936	4.0228	29.67	7.38
167.	Waliman	1.9530	1.9530	17.47	8.95

168.	Joko Utomo	2.0000	2.0000	13.12	6.56
169.	Wagimin	1.9470	1.9470	18.22	9.36
170.	Atiyah	1.9360	1.9360	19.80	10.23
171.	Sumarni	2.0115	14.2917	113.03	7.91
172.	Imam Budiyanto	1.9712	1.9712	17.51	8.88
173.	Sujaman	1.9712	1.9712	16.72	8.48
174.	Sudirman Sidik	1.9360	1.9360	14.80	7.64
175.	Rebun Saputro	1.9470	4.2059	59.26	14.09
176.	Ratno	1.9936	1.9936	17.81	8.93
177.	Sastro Suroso	2.0000	2.0000	17.47	8.74
178.	Paijan	2.0292	2.0292	15.77	7.77
179.	Suwardi	1.9936	1.9936	14.83	7.44
180.	Mispan	1.9998	1.9998	18.59	9.30
181.	Rohmat	8.2930	8.2930	71.27	8.59
182.	Mat Zaini	2.1436	2.1436	19.93	9.30
183.	Mulyadi	1.9350	1.9350	16.80	8.68
184.	Jumiati	1.9936	1.9936	17.81	8.93
185.	Zainul Mustakim	3.197	3.197	40.42	12.64
186.	Rudi Hartono	1.9959	1.9959	13.20	6.61
187.	Yusworo	2.0000	2.0000	15.54	7.77
188.	Misno Sahri	1.9980	1.9980	16.99	8.50
189.	Hariyanto	6.0909	6.0909	55.75	9.15
190.	Mudiyono	1.9584	3.9296	35.78	9.11
191.	Imam Syafi'i	2.0091	2.0091	18.80	9.36
192.	Zainuddin	1.9647	1.9647	14.62	7.44
193.	Drs. Sarwoto	2.2351	2.2351	16.79	7.51
194.	Apik Husni Maarif	4.0545	4.0545	39.82	9.82
195.	Supriyadi	2.0292	2.0292	19.74	9.73
196.	Sutini	1.7440	1.7440	17.60	10.09
197.	Wiji	1.9295	1.9295	15.13	7.84
198.	Kapiyah	1.9900	1.9900	14.95	7.51
199.	Tariyah	2.0160	2.0160	13.35	6.62
200.	Winarti	2.0000	2.0000	14.62	7.31
201.	Sudadi	1.9959	1.9959	13.33	6.68
202.	Pratowo Hadi Sumanto	6.000	6.000	46.61	7.77
203.	Sutinah	1.9980	1.9980	15.01	7.51
204.	Sari	1.9936	1.9936	20.84	10.45
205.	Supirin	2.0292	2.0292	19.95	9.83
206.	Siti Khodijah	1.9647	1.9647	20.45	10.41

207.	Guntur	2.1330	2.1330	16.02	7.51
208.	Mandhani	2.0240	2.0240	20.42	10.09
209.	Sutiyem	1.9825	1.9825	17.88	9.02
210.	Moch. Sindi	3.9671	3.9671	33.30	8.39
211.	H. Supardji	1.9735	1.9735	13.18	6.68
212.	Rusmaulana	2.0000	2.0000	15.69	7.85
213.	Mujiyati	1.9936	1.9936	14.44	7.24
214.	Siti Chotimah	1.9712	1.9712	18.62	9.45
215.	Sucipto	2.0240	2.0240	15.20	7.51
216.	Nuryadi	1.9936	1.9936	20.84	10.45
217.	Ferika Budi Asih	2.0270	2.0270	19.93	9.83
218.	Rusmi	1.9295	1.9295	17.40	9.02
219.	Cicilia Pidjath	1.9936	1.9936	18.92	9.49
220.	Endang Supriyanti	1.9840	1.9840	19.62	9.89
221.	Edy Purnomo	1.9712	1.9712	15.46	7.84
222.	Melasati	1.9584	1.9584	14.71	7.51
223.	Supadmi / Sulistiyo	2.0000	2.0000	14.49	7.25
224.	Shoka	1.9936	1.9936	13.20	6.62
225.	Daang Padoma	1.9996	1.9996	18.89	9.45
226.	Karyadi / H. Sagi	1.9847	1.9847	14.91	7.51
227.	Nuriah Purba	2.0240	2.0240	15.01	7.42
228.	Nurmala Pangaribuan	2.0000	2.0000	20.20	10.10
229.	Susilo	1.9959	1.9959	16.49	8.26
230.	Sri Prasetyani	2.0475	2.0475	18.49	9.03
231.	Buyung	2.0000	2.0000	16.61	8.31
232.	Tri Bowo Kriswinarso	7.9728	7.9728	67.60	8.48
233.	Jarin	2.0160	2.0160	13.35	6.62
234.	Wiyoto	2.0000	2.0000	14.62	7.31
235.	Bejan Kun Prasetya	2.0293	2.0293	13.44	6.62
236.	Deny Alamsyah	3.9932	3.9932	29.99	7.51
237.	Nurhadi	4.0042	4.0042	38.99	9.74
238.	Nurhadi Harto	1.9735	1.9735	9.83	4.98
239.	Ahmad Sunarto	3.9559	3.9559	35.88	9.07
240.	Imam Kambali	2.0292	2.0292	19.26	9.49
241.	Dwi Indriyanto	1.9900	1.9900	15.61	7.84
242.	Saidi Jhoni. S	1.9936	1.9936	14.59	7.32
243.	Y.B Zainanto H.B	4.0000	4.0000	31.29	7.82
244.	Siti Aminah	1.9470	1.9470	17.56	9.02
245.	Siti Fatimah	2.0270	4.0229	34.66	8.62

246.	Siti Choiriah	2.0000	3.9735	28.01	7.05
247.	Rohimin	1.9350	1.9350	16.09	8.32
248.	Hargono	2.1330	2.1330	17.87	8.38
249.	Nur Hadi	1.9295	1.9295	14.84	7.69
250.	Hadi Sumarno	1.9584	1.9584	17.66	9.02
251.	Ervan Rasyid	4.0240	4.0240	34.68	8.62
252.	Sugin	2.0000	2.0000	14.96	7.48
253.	Agus Subiyanto	1.9980	1.9980	20.18	10.10
254.	B. Nurul Fatmi	2.0384	2.0384	13.61	6.68
255.	Suparman Arif	3.9981	3.9981	36.05	9.02
256.	Achmad Misran	5.9998	5.9998	48.35	8.06
257.	Mashuri	2.0160	2.0160	15.14	7.51
258.	Waris Singarimbun	1.9470	1.9470	18.27	9.38
259.	Novia Ari Wijayanti	1.9747	1.9747	17.30	8.76
260.	H. Bandi	2.0240	2.0240	19.12	9.45
261.	Sulastini	1.9350	1.9350	14.53	7.51
262.	Turimin	2.0240	2.0240	18.99	9.38
263.	Nimrot Pardede	1.9712	1.9712	14.28	7.24
264.	Sareleh Saragih	1.9998	1.9998	17.52	8.76
265.	Emi Maryani	2.0270	2.0270	14.81	7.31
266.	Hendry H.	2.1330	2.1330	16.02	7.51
267.	Darmo Ikromo	4.0070	4.0070	32.44	8.10
268.	Mahmud	1.9980	1.9980	18.02	9.02
269.	Mu'tidah	1.9996	1.9996	15.02	7.51
270.	Eliseba	1.9295	1.9295	16.04	8.31
271.	Muhridwan	1.9936	1.9936	15.98	8.02
272.	Moh. Nur Muklis	1.9936	1.9936	18.62	9.34
273.	Dwi Nugroho	1.9980	1.9980	14.85	7.43
274.	Nonia Harianja	1.9712	1.9712	16.51	8.38
275.	Purwadi	1.9584	1.9584	15.97	8.15
276.	Suradi	4.0240	4.0240	32.20	8.00
277.	Prasetyo	1.9980	1.9980	18.02	9.02
278.	Chelie Eltya	1.9492	1.9492	18.50	9.49
279.	Gunarti	2.0000	2.0000	15.49	7.75
280.	Sutiyah	1.9735	1.9735	15.48	7.84
281.	Sari P. Gatot	2.0000	2.0000	13.70	6.85
282.	M. Rofi'i	2.0457	2.0457	20.64	10.09
283.	Drs. Gst M. Suherman	2.0240	2.0240	19.21	9.49
284.	Sri Esti Puji Lestari	2.0292	2.0292	13.55	6.68

285.	Sugiono	2.0000	2.0000	13.25	6.63
286.	Seniman	2.0160	2.0160	14.73	7.31
287.	Suprpto	1.9584	1.9584	17.66	9.02
288.	Dwi Sutantyo	1.9360	1.9360	17.13	8.85
289.	Isniyati	2.0292	2.0292	15.02	7.40
290.	Solikin	1.9350	1.9350	15.18	7.84
291.	Jarwan	2.1280	2.1280	15.98	7.51
292.	Slamet Pujiyanto	2.0240	2.0240	17.91	8.85
293.	Sukarno	2.0292	2.0292	19.95	9.83
294.	Ali Rohmad	1.9712	1.9712	19.89	10.09
295.	Mahdiansyah	2.0000	2.0000	18.04	9.02
296.	Solarjono	1.9936	1.9936	17.64	8.85
297.	Satimin	1.9360	1.9360	12.93	6.68
298.	Suparlan	2.0000	2.0000	15.69	7.85
299.	Rustam	1.9980	1.9980	15.01	7.51
300.	Abdul Hafi Eka Sukma	0.6000	0.6000	11.93	19.88
301.	Yuli Askuri	1.7500	1.7500	33.61	19.21
302.	Tuimun	0.6105	0.6105	10.21	16.72
303.	Hadi Suyitno	1.9881	1.9881	34.84	17.52
304.	Purnomo Abdurrohman Mursid	14.4119	14.4119	289.83	20.11
305.	Mahmud	18.4518	18.4518	266.61	14.45
306.	Sri Natun	1.5000	1.5000	22.78	15.19
307.	Muhamad Nur Ali Fahrudin	0.7500	0.7500	13.89	18.52
308.	Muhtaromin	0.7037	0.7037	7.82	11.11
309.	Ahmad Marbani	8.3255	8.3255	120.40	14.46
310.	Thurina Heru Budiantoro	1.6197	1.6197	24.80	15.31
311.	Agus Paenah	1.0000	1.0000	16.17	16.17
312.	Banu Sutriyanto	1.5000	1.5000	22.25	14.83
313.	M Rois	0.7500	0.7500	15.79	21.05
314.	Antan Supebri	2.7500	2.7500	55.96	20.35
315.	Moh. Romli	3.2500	3.2500	67.29	20.70
316.	Sumoyadi	2.0000	2.0000	43.01	21.51
317.	Suyono	0.9959	0.9959	21.40	21.49
318.	Ngatimin Susanto	4.0020	4.0020	72.06	18.01
319.	Haryanto	1.2500	1.2500	23.24	18.59
320.	Suharno	3.5127	3.5127	62.89	17.90
321.	Kirmaji	4.0836	4.0836	68.59	16.80
322.	Priyono	1.5652	1.5652	27.23	17.40
323.	Suratno	6.0000	6.0000	118.09	19.68

324.	Jati Suminto	2.3060	2.3060	47.55	20.62		
325.	Maju Hutaauruk	5.9886	5.9886	101.34	16.92		
326.	Suharto	1.0000	1.0000	17.91	17.91		
327.	YB. Zainanto Hari Widodo	4.9741	4.9741	87.07	17.50		
	TOTAL	868.7789	868.7789	9,484.36	10.92		
	<i>*Projected FFB production for 22 October 2020 to 21 October 2021</i>						
1.8.4	Estimate Certified Palm Product Claim						
	FFB Processed (tonnes/year)	CPO Out put (tonnes)		CSPKO Out put (tonnes)		CSPKE Out put (tonnes)	
		Extraction (%)	Extraction (%)	Extraction (%)	Extraction (%)		
	-	-	-	-	-	-	-
1.9	Other Certifications						
	Others			-			

2.0	ASSESSMENT PROCESS
2.1	Assessment Team
ASA 1	<p>1. Arif Faisal Simatupang (Lead Auditor) Bachelor of Agriculture. from Department of Agriculture Agronomy. Faculty of Agriculture. University of Gadjah Mada. He has successfully completed an RSPO endorsed P&C Lead Auditor Training. RSPO SCCS endorsed Lead Auditor Training. Indonesian Sustainable Palm Oil (ISPO) Lead Auditor Training. Management System Certification ISO 9001-2008 Lead Auditor Training. Environmental Management System ISO 14001 Lead Auditor Training. ISO 17021 and ISO 17065 Awareness Training. Management of High Conservation Value (HCV) Training. Social Accountability SA 8000 Training. He has four years of working experience as a Field Assistant on oil palm plantation company in Indonesia. Since 2014. he works as an auditor of RSPO and ISPO in the aspects of legal. social. best management practices of mill and estate. OHS. employment. and environmental. In this audit. he was assessing the aspects of best management practices of agronomy and processing. During this assessment he assess the aspect of land legality, supply chain, OHS and employment.</p> <p>2. Nuridin Chaeriana (Auditor). Associate Expert in Forest Management. Faculty of Forestry. has 5 years working experience in Industrial Plantation Forest Companies as Environment. Health and Safety Staff and worked for 5 years in plantations as Assistant Manager of Sustainability. Training attended was RSPO & ISPO Lead Auditor. General OHS Expert. Hazardous and Toxic Waste Material Management Technical Guidance. Fundamentals of Forest and Land Fire Control. Training of Trainer Fire Fighting Course. Basic Fire Fighting Course. Fire Management. Fire Fighting Technique Prevention & Control. ISO 14001:2004 Internal Auditor. During this assessment he was verified Environment.</p> <p>3. Johannes Kapri Pandiangan (Auditor Under Trainee). Bachelor of Agriculture, Department of Agricultural Social-Economics, Faculty of Agriculture. Has 7 years of experience working as operational staff in one of the leading private oil palm plantation companies in Indonesia. The training that has been attended includes: Forest and land fire emergency response training by BKSDA Riau Province, IHT ISPO P&C Certification System, IHT Awareness ISO 17021 and 17065, IHT Awareness RSPO, ISO 14001: 2015 Lead Auditor Training, and ISO 9001:2015 Lead Auditor Training. During this audit he verify Best Management Practices under supervised by the Lead Auditor.</p>
2.2	Assessment Methodology. Assessment Process and Locations of Assessment
2.2.1	Figure of person days to implement assessment
ASA 1	<p>Number of auditors : 2 auditor</p> <p>Number of days for ASA-1 at site : 3 days</p> <p>Number of working days for ASA-1 at site : 6 Working days</p>
2.2.2	Assessment Process
ASA 1	<p>The assessment was conducted by measuring the sufficiency of implementation with the consistency done by the Asosiasi Petani Kelapa Sawit Mandiri (APKSM) the requirements of RSPO Independent Smallholder Standard 2019 – Milestone B, dated 6 November 2019.</p> <p>This assessment conducted for previous scope at initial assessment of 265 smallholders with 710.54 ha area, and there is extension scope of additional smallholders of 73 smallholders with 158.24 ha area. Total current scope numbered 338 smallholders in 868.78 ha area.</p> <p>Smallholders are divided into 19 smallholder groups. The extension scope of additional contained in:</p> <ul style="list-style-type: none"> - Usaha Tani Mandiri Smallholder Group: there are additional 41 smallholders. - Kadipi Mandiri Smallholder Group: 18 smallholders. - Maju Bersama Smallholder Group: 14 smallholders. <p>The assessment was conducted in three methods: (1) document review, aiming to observe the sufficiency of types or substances from required documents; (2) <i>interview</i>, aiming to obtain more detailed information and cross check the</p>

	<p>information; and (3) field observation, aiming to observe directly the sufficiency of implementation on site.</p> <p>Team of auditor started their trip from Jakarta to Pangkalan Bun (Kotawaringin Barat Regency) and continued to site. Opening Meeting in the Meeting Room of APKSM. Opening meeting was attended by head of association, ICS and other related personnel.</p> <p>Public Stakeholder Notification was made on 9 November 2020. There is no written negative feedback receive. Stakeholder consultation involved internal and external stakeholders.</p> <p>Meetings were held with stakeholders to seek their views on the performance of the company with respect to the RSPO requirements and aspects where they considered that improvements could be made. At the start of each meeting, the interviewer explained the purpose of the audit followed by an evaluation of the relationship between the stakeholder and the company before discussions proceeded. The interviewer recorded comments made by stakeholders and these have been incorporated into the assessment findings. The comments made by external stakeholders were also taken into account in the assessment</p> <p>Structured worker and members interviews with male and female workers were held in private at the workplace. Fieldworkers were interviewed informally in small groups in the field. In addition, the wives of workers and staff were interviewed in informal meetings at their housing. Company officials were not present at any of the internal or external stakeholder interviews. A list of Stakeholders contacted is included as Appendix III.</p> <p>Commonly, the audit activities went smoothly with good support from the unit management. The presentation of documents is presented quite well by involving related personnel. Closing Meeting conducted the Meeting Room of APKSM, its attended by head of association, ICS and other related personnel.</p> <p>Improvement of finding from this assessment is observed by auditor. All information obtained was recorded in Check List of PT Mutuagung Lestari (MUTU) and part of this report</p> <p>The assessment program please find Appendix 2</p>
2.2.3	Locations of Assessment
ASA 1	<p>The sample size should then be determined by the formula $(0.8\sqrt{y}) \times (z)$, where y is the number of smallholders, z is the multiplier defined by the risk assessment. Multipliers are set as follows: Low risk = multiplier of 1; Medium risk = multiplier of 1.2, and High risk = multiplier of 1.4. The risk assessed by auditor team is high risk because the area separate in several villages, various planting of year, and different level of cultivation experience and very diverse size of plantation.</p> <p>Based on that's formula the minimum numbers of sampling are 29 smallholders (19 of existing scope and 10 of extension scope). However, during the audit the auditor visited 21 smallholders of existing scope, and 13 smallholders of extension scope. The sampling location consider the issue arose from the review documents and stakeholder's consultation that are fundamental and crucial. The smallholders and locations visited by auditor were:</p> <ul style="list-style-type: none"> - 4 smallholder's plot of Tani Usaha Mandiri Smallholder Group (existing scope). Field Observation and interview related to best practices, legality, environmental, and certification related implementation. - 6 smallholder's plot of Kecubung Smallholder Group (existing scope). Field Observation and interview related to best practices, legality, environmental, and certification related implementation. - 5 smallholder's plot of Teratai Smallholder Group (existing scope). Field Observation and interview related to best practices, legality, environmental, and certification related implementation. - 6 smallholder's plot of Seroja Smallholder Group (existing scope). Field Observation and interview related to best practices, legality, environmental, and certification related implementation. - 6 smallholder's plot of Tani Usaha Mandiri Smallholder Group (extension scope). Field Observation and interview related to best practices, legality, environmental, and certification related implementation.

	<ul style="list-style-type: none"> - 4 smallholder's plot of Kadipi Mandiri Smallholder Group (extension scope). Field Observation and interview related to best practices, legality, environmental, and certification related implementation. - 3 smallholder's plot of Maju Bersama Smallholder Group (extension scope). Field Observation and interview related to best practices, legality, environmental, and certification related implementation. - Agrochemicals Warehouse of Maju Bersama Smallholder Group. Observation related to management of oil and agrochemical material and waste, MSDS, emergency response facilities and the types of pesticides used. - Hazardous Waste Warehouse of Kadipi Mandiri Smallholder Group. Observations related the best practice of the warehouse. - Agrochemicals Warehouse of Usaha Tani Mandiri Smallholders Group. Observation related to management of oil and agrochemical material and waste, MSDS, emergency response facilities and the types of pesticides used. - Hazardous Waste Warehouse of Usaha Tani Mandiri Smallholders Group. Observations related the best practice of the warehouse. - Harvesting Block E4 of Kadipi Mandiri Smallholder Group, Observation and interviews with foreman and harvester related FFB quality, harvesting round, OHS, and employment.
2.3	Stakeholder Consultation and Stakeholders Contacted
2.3.1	Summary of stakeholder consultation process.
ASA 1	<p>Consultation of stakeholders of Asosiasi Petani Kelapa Sawit Mandiri was held by:</p> <ul style="list-style-type: none"> • Public Notification on website PT Mutuagung Lestari on 9 November 2020. • Public consultation by phone with government institution on 15 December 2020 • Public consultation by phone with community on 14-16 December 2020 • Consultation with NGO (WWF, Sawit Watch & Walhi) via email on December 08,2020 <p>Numbers of input from stakeholders were clarified by Asosiasi Petani Kelapa Sawit Mandiri as a part of this report.</p>
2.3.2	Stakeholder contacted
	Please find appendix 1
2.4	Determining Next Assessment
	The next visit of ASA 2 will be conducted eight (8) month to twelve (12) month after the date of this annual license.

3.0 ASSESSMENT FINDINGS

3.1 Summary of Assessment Report of the RSPO Certification

MUTUAGUNG LESTARI has conducted an assessment of **Asosiasi Petani Kelapa Sawit Mandiri** which consisting of 338 smallholders.

During the assessment, there was two (2) Nonconformities were assigned against Major Compliance Indicators, there was no nonconformities were assigned against Minor Compliance Indicators or opportunities for improvement.

Further explanation of the non-conformity that raised and corrective action taken by the company are provided in section 3.5. The company has already prepared and implemented the corrective actions that had been reviewed and accepted by Auditors in form of documentation evidences e.g. (document record/photographic/etc). The corrective action taken that consist of two (2) Major Nonconformities had been complied shall be verified during next assessment.

MUTUAGUNG LESTARI found that **Asosiasi Petani Kelapa Sawit Mandiri** complied with the requirements of RSPO Independent Smallholder Standard 2019 – Milestone B, dated 6 November 2019. Therefore, MUTUAGUNG LESTARI Recommends RSPO Certification of compliance is **continued**.

Ref Std.	VERIFICATION RESULT of MUTU-Certification
A – ICS: Group Entity and Group Management Requirements	
A.1 The Group demonstrates that they are legally formed	
A.1.1	The appointment of Group Manager is YB Zainanto Hari Widodo, the Chairman of Asosiasi Petani Kelapa Sawit Mandiri (APKSM), based on a group member meeting on 29 March 2019.
A.1.2	YB Zainanto Hari Widodo had had the Appointment Letter as the Chairman of Asosiasi Petani Kelapa Sawit Mandiri (APKSM). APKSM also has had a Deed of Association (<i>Akta Pendirian Asosiasi</i>) which has been acknowledge by Ministry of Law and Human Rights on 26 April 2019. The organizational structure of the association consisting of chairman, secretary, treasurer and supervisor board. APKSM has been registered as a member of RSPO with membership No. 1-0279-19-000-00 dated 7 August 2019 with the type of ordinary membership (oil palm growers).
A.1.3	Based on SOP of Membership Registration (No. 02/ SOP-UPP/ APKSM/ VII/ 2019 dated 1 July 2019) stated that the documentation of membership registration consist of registration form, statement letter of willingness to follow RSPO certification, showing the land legality documents, the land not in the forest area, and then received membership ID card. The association has shown the documentation of those requirement documents in Personal File of each member. In initial certification the association consist of 265 smallholders in 710.54 ha. In this ASA 1, there are additional 73 smallholders in 158.24 ha. Therefore the current scope of certification consist of 338 smallholders with the total area of 868.78 ha.
A.1.4	There are Personal File of each member, showing the signed the membership documents and its requirements, for instance the statement letter of willingness to follow the RSPO certification. Based on interview to the smallholders and field observation on their land parcel, they understood the membership requirement and the consequences in RSPO certification, such as aware to collect the hazardous waste in appropriate place, using PPE when working, selective spraying, etc.

Status: Comply

A.2 The Group Manager is responsible for managing the Group for certification

A.2.1

The Group Manager has set a series of SOP as a plan in ICS. There are total 38 SOP covers the aspects of administration, IPM, sales, OHS, certification, etc. The Group Manager able to show that the member has been adhere the ICS procedure, such as based on semesterly internal audit result.

A.2.2

The Group Manager, as well as the official of APKSM have received the training of RSPO from FORTASBI (*Forum Petani Kelapa Sawit Berkelanjutan Indonesia*/Indonesian sustainable smallholders forum) and RSPO on 7 – 9 August 2019. During the audit, the Group Manager demonstrate the comprehension the RSPO standard and ICS implementation.

A.2.3

The group manager has identified the needs given to members based on the RSPO P&C ISH 2019 principles and criteria. The results of the interview with the Group Manager. it was explained that the training plan is also tailored to the needs of the smallholders. which are generally related to best cultivation practices.

Group managers through the independent oil palm Smallholders Association made a breakthrough as a strategy to overcome the ban on gathering during the Covid-19 pandemic by providing a monthly APKSM Member Communication Tool bulletin which has been implemented since July 2020 which is distributed to all association members.

Based on the results of field visits and interviews with several smallholders, it was found that member smallholders had understood and were able to briefly explain the materials contained in the bulletin. As one example is that smallholders already understand the prohibition of hunting for protected animals. Besides that they are also able to explain the prohibition of using fire in plantation area. both for land preparation and pest control.

Status: Comply

B – ICS: Policies and Management

B.1 The group Internal Control System contains documented policies and procedures for operational management.

B.1.1

APKSM already has an ICS for management which consists of the Group Manager for the Oil Palm Smallholder Association. ICS Operational Manager. Approval Committee. Extension and registration units. internal assessment units. FFB sales documentation units. IPM and HCV units. emergency response units and occupational Health and Safety and smallholder groups.

APKSM also has SOPs related to membership. namely:

1. SOP for Member requirements. Document No 001 / SOP-UPP / APKSM / VII / 2019 effective July 2019
2. Member Registration SOP. Document No 002 / SOP-UPP / APKSM / VII / 2019 effective July 2019
3. SOP for Training and Socialization. Document No 003 / SOP-UPP / APKSM / VII / 2019 effective July 2019
4. Member Entry and Exit SOP. Document No 001 / SOP-KP / APKSM / VII / 2019 effective July 2019
5. Member Warning & Sanctions SOP. Document No 002 / SOP-KP / APKSM / VII / 2019 effective July 2019
6. SOP for Monitoring & Member Assessment. Document No 003 / SOP-KP / APKSM / VII / 2019 effective July 2019
7. Internal Audit SOP. Document No 003 / SOP-UI / APKSM / VII / 2019 effective July 2019

In the Internal Audit SOP. it is explained that the implementation of internal audit is carried out at least once a year. The SOP also explains how to take the sample. namely $0.8 \sqrt{y \times (z)}$. and based on the internal audit report for the period 2020. it is known that the internal audit report does not clearly state the number of audit samples.

APKSM has carried out internal audit activities for the period of 2020 which were held 2 times. The first audit was carried out on 28-30 January 2020 and the second audit was carried out on 27-28 July 2020. Both activities have been completed with reports on internal audit results. Based on the internal audit report. there are several findings of discrepancies. namely:

- Internal Audit 28 - 30 January 2020. there were 6 findings of non-conformities and all of them were declared fulfilled on 31

March 2020

- Internal Audit 27-28 July 2020 there were 14 findings of non-conformities and all of them were declared fulfilled on 30 September 2020

However, the SOP has not yet discussed or explained the annual internal audit conducted for all smallholders. **This is an NCR non-conformity. No. 2020.3**

B.1.2

Smallholders who join APKSM members will receive a Smallholder ID as proof of membership. Based on the SOP for member registration (No. Dok. 02 / SOP-UPP / APKSM / VII / 2019 in July 2019, it is stated that to register as a member the steps that must be taken are:

- Fill out the member registration form
- Fill in the registration form for prospective RSPO certification members, a statement letter following RSPO certification, bring a photocopy of ID card, KK and land certificate
- Bring all the requirements that are required.

In this procedure there is also a format for a list of members of the smallholder groups that is signed by the prospective member. In addition, there is a form of collective agreement letter to follow RSPO certification which must be signed by each member.

For the initial establishment there is a joint declaration from each smallholder to participate in the RSPO certification program. For smallholders in Kadipi Village, the agreement was signed on April 12, 2019 and for smallholders in Sungai Rangit Jaya, it was signed on March 24, 2018.

A joint statement letter has been submitted to each farmer, for example:

- Pranyoto: September 14, 2019.
- Monday: September 14, 2019.
- Dirap: September 14, 2019.
- Sarawi: September 14, 2019.
- Khamin: September 14, 2019.
- JP Erig Simorangkir: on September 14 2019.
- Arif Mulyono: September 14, 2019.
- Sakur: September 14, 2019.
- Suryadi: September 14, 2019.
- Taswi: September 14, 2019.
- Marlan: September 14, 2019.

In addition to a joint statement following the RSPO, smallholders also receive smallholder logbooks, smart books, worker payment notes, examples of STDB and examples of SPPL.

Status: Non conformity with Major Category No. 2020.01

C – ICS: Group business planning

C.1 The group has a group Business Plan prepared with the participation and contributions of group members.

C.1.1

APKSM already has a work plan for 2021 - 2023 which explains the projected FFB production, projected operating costs, projected FFB prices and projections of revenue from FFB sales. The projections are as follows:

Production

2021: 14,740,853 Kg

2022: 21,721,442 Kg

2023: 23,806,990 Kg

The work plan explains the projected area expansion of 500 ha with the addition of new members

APKSM has conducted an official report on the implementation of activities carried out on January 4, 2020 with the type of activities of the ICS coordination meeting with the material for updating Plantation Operational Budgeting 2020, joint business planning and evaluation of work and operational programs in 2019. The activity was attended by 12 participants.

APKSM has shown a plan for revenue and sales of Physical FFB and an Allocation Plan for its utilization for the period 2020. Based on the document, it explains production targets, price estimates, revenue projections, projected operating costs and projected revenues.

APKSM has also shown the realization of revenue from the sale of physical FFB and the allocation of utilization until November 2020. Based on this document, it is known that the production achievement has reached 7.919 tons with some maintenance costs still below the budgeted cost plan, for example pruning work.

Based on financial reports and interviews with APKSM management, it is known that during 2020, the association has managed its own finances and almost all of the association's operational funding came from members where in the previous year the association still used assistance funds from companion companies.

	Status: Comply	
--	-----------------------	--

C.2 The ICS of the group is integrated with the Group's Management Plan.

C.2.1

The association has an Internal Audit SOP (Document No. 01 / SOP-UPI / APKSM / VII / 2019, July 2019, Rev. 00) which was endorsed by the Chairman of the Association. The scope of the SOP starts from compiling an audit program to reporting the audit results and their follow-ups.

Job descriptions for internal auditors are as follows:

- Auditors may not conduct or audit their own part of the smallholder groups
- Auditors are assigned the expertise / abilities of the internal auditors
- Create an audit schedule

APKSM carried out internal audits related to RSPO certification on 28-30 January 2020 and 27-28 July 2020. The audit activities include document and field verification.

In the audit activity on 27-28 July 2020, 19 discrepancies were found, including, for example, there was no follow-up evidence of submitting a Cultivation Registration Certificate from the relevant agency, workers did not always use complete PPE, production records that had not been carried out consistently by smallholders and discrepancies in the field, for example, there are pruning activities that have not been carried out, the number of oil palm tillers around the plate and weeds that are still a lot in the plant area. The internal audit activity report contains discrepancies along with the follow-up actions that must be taken based on the non-conformity.

Regarding compliance with non-conformities, evidence of improvement has also been shown, for example as follows:

- Governor's Decree regarding the District and City Minimum Wage for Central Kalimantan Province in 2020
- Minutes and documentation of boundary markers fixing in lot E08 in March 2020 and land lot E04 in June 2020
- Minutes of the implementation of socialization activities about the RSPO and the best SOP for Plantation Cultivation for members in Sungai Rangit Jaya Village on September 4, 2020, which was attended by 19 people

APKSM also held a meeting on August 5, 2020 regarding the results of the internal audit. In the meeting, discussions and evaluations were held as an effort to fix some of the discrepancies that were obtained from the internal audit activity.

	Status: Comply	
--	-----------------------	--

D – ICS: Group Trading System for Certified Volumes

D.1 The group has a procedure and system in place for the tracking of FFB.

<p>D.1.1</p> <p>Procedure to track the FFB including the producer and trader has been set in the following procedures:</p> <ul style="list-style-type: none"> - SOP of FFB Recording (No. 001/SOP-UDP/APKSM/VII/2019 dated 2 July 2019). - SOP of FFB Sales (No. 002/SOP-UDP/APKSM/VII/2019 dated 2 July 2019). - SOP of FFB Pricing Information (No. 003/SOP-UDP/APKSM/VII/2019 dated 2 July 2019). - SOP of FFB Transporting (No. 004/SOP-UDP/APKSM/VII/2019 dated 2 July 2019). - SOP of FFB Update System (No. 005/SOP-UDP/APKSM/VII/2019 dated 2 July 2019). <p>On these procedures, regulate that the smallholder (producer) shall record the FFB production from the certification scope, then the smallholder group will recap the data, and then will be reported to the APKSM. The APKSM will sell the certified products based on the actual production.</p>	<p>Status: Comply</p>
<p>D.2 The group documents and implements a system for the tracking of FFB.</p>	
<p>D.2.1</p> <p>The record sheet for annual production of all members has been documented. The Group Manager has maintained the production record of each member and the recapitulation, as well as the sales of certified volumes of products as book and claim.</p> <p>There is a decree from Group Manager (No. 12/ SK/ APKSM/ VI/ 2019 on 3 June 2019) regarding the sales of RSPO certified product (FFB), which states that the association will only sell certified products through the book and claim (credit) model.</p> <p>The recapitulation of certified products sold in credit as follows:</p> <ul style="list-style-type: none"> - CSPO sold of 50 tons by ACT. - CSPO sold of 1,091 tons by Unilever - CSPKO sold of 128 tons by Unilever. - CSPKE sold of 157 tons by Felles Jopet Argan Rogaland 	<p>Status: Comply</p>
<p>D.3 The group has a procedure and system for premium distribution.</p>	
<p>D.3.1</p> <p>The mechanism and agreement of the premium distribution has been set in SOP of Finances Management of RSPO Certification (No. 001/SOP-PH/APKSM/IX/2019 dated 1 September 2010), set that the premium finances will be transferred to APKSM bank account, and then will be allocated to management fee, saving, contribution to smallholders group, existing and new member development, CSR, with the percentage has been state in this procedure. The Group Manager has shown the evidence of premium money distribution such as for field rehabilitation, fertilizer subsidy, and charity for the elderly.</p>	<p>Status: Comply</p>

Ref Std.	VERIFICATION RESULT of MUTU-Certification	
PRINCIPLE 1: OPTIMISE PRODUCTIVITY. EFFICIENCY. POSITIVE IMPACTS AND RESILIENCE		
1.1 Smallholders establish a legal entity which has organisational capacity to comply with the RSPO Independent Smallholder Standard.		
<p>APKSM has shown a collection of smallholder statement letters from each smallholder groups. A statement letter from each member of the smallholder groups has been signed by the participating farmer. The smallholder groups contained in APKSM are as follows:</p> <ol style="list-style-type: none"> 1. Usaha Mandiri Smallholder group (41 new members of smallholder) 2. Maju Bersama Smallholder group (18 new members of smallholder) 3. Kadipi Mandiri Smallholder group (14 new members of smallholder) 4. Karya Sari Smallholder group <p>One example of a statement letter is the Joint Commitment statement letter dated 24 March 2018. This joint commitment letter was signed by 46 smallholder group members. APKSM has also shown the smallholder's statement sheet document that was signed on January 21, 2020, in which the statement explained that the smallholders would join the Independent Oil Palm Smallholders Association to follow RSPO certification according to the independent smallholders standards and comply with the required principles, criteria and indicators. .</p> <p>APKSM already has training materials and outreach for members. APKSM has conducted training for members covering palm oil pricing, financial management and best practices for plantation organizations. One example of the training carried out was the Independent Smallholder Standard training, group certification, BMP, PHT, HCV, Smallholder Book Recording and Business Reporting which was held on August 22, 2020 which was attended by 13 participants.</p> <p>The Smallholder Group has implemented best practice management related to decision making and sustainable financial management. This is explained in the activity documents and management and ICS meetings in 2020 which are held every month. One example is the minutes of the ICS meeting held on February 20, 2020 with meeting materials covering the allocation of RSPO certification funds, APKSM ICS reshuffle and recruitment of new members. The meeting also discussed the update on FFB sales.</p>		
	Status: Comply	
1.2 Smallholders have capacity to effectively manage their farm.		
<p>APKSM has shown the Budgeting document and the realization of Farm Operation Costs in 2020. The document explains things about the production target and the budget for plantation maintenance costs for 2020 and the realization of FFB production achievement, realization of maintenance costs) fertilization, pruning, costs for harvesting, spray and tripe) as well as the results of FFB sales until November 2020.</p> <p>In addition, there is also APKSM's independent oil palm Smallholder Record Book, which explains the recording of harvest yields, harvest costs and maintenance costs. The notebook is filled in periodically (monthly).</p>		
	Status: Comply	
1.3 Smallholders implement good agricultural practices (GAP) on their farms.		
<p>Smallholders have carried out GAP in the plots they manage, this is explained as stated in the palm oil farmer's logbook which contains records related to monthly production, monthly harvest costs and monthly maintenance costs such as weed spray costs.</p> <p>In addition, during field visits to smallholder groups, member smallholders are able to explain the environmental impacts of using pesticides, for example not having to throw away packaging or washing containers and work tools in the river flow because it can cause poisoning to some living things such as fish.</p>		

Status: Comply	
PRINCIPLE 2: ENSURE LEGALITY. RESPECT FOR LAND RIGHTS AND COMMUNITY WELLBEING	
2.1 Smallholders have legal or customary rights to use the land in accordance with national and local laws and customary practices.	
<p>The scope certification is 338 smallholders, covering total area of 868.78 ha. Those area has had land title in the form of SHM (<i>Sertifikat Hak Milik</i> /certificate of land ownership) for total area 868.78 ha. Examples of SHM verified were:</p> <ul style="list-style-type: none"> - SHM No. 15.06.04.22.1.02595 on behalf of Seno for an area of 0.61 Ha. - SHM No. 15.06.02.22.1.02581 on behalf of JP. ERIG. G. Simorangkir for an area of 0.76 Ha. - SHM No. 15.06.02.22.1.00671 on behalf of Dirap E for an area of 1 Ha. - SHM No. 00144 on behalf Jati Sumito for an area of 2.30 ha. - SHM No. 00027 on behalf Yuli Askuri for an area of 1.75 ha. 	
Status: Comply	
2.2 Smallholders have not acquired lands from indigenous peoples. local communities or other users without their free. prior and informed consent. based on a simplified FPIC approach.	
<p>There are no customary rights and traditional rights within the lands of Association member, all plots are areas with individual ownership rights. The smallholders have a statement of land tenure which also informs about a map of the land. The picture was signed by adjacent parties, landowners and village heads. As for the smallholders land in Kedipi Atas Village it is known that the land is a transmigration program from the Indonesian Government.</p>	
Status: Comply	
2.3 The right to use the land is not disputed by indigenous peoples. local communities or other users.	
<p>Based on the results of field observations to smallholders land parcels, it is observed that all the boundaries are clearly visible in the field, the boundaries formed in the form of poles, trenches and plant installed by smallholders. Based on observation, there was no planting beyond their land boundaries. Based on interviews with smallholders and the results of field observations there are no areas of smallholders who are in the process of dispute.</p>	
Status: Comply	
2.4 Smallholder plots are located outside of areas classified as national parks or protected areas. as defined by national. regional or local law or as specified in National Interpretations.	
<p>The association has had an overlay map of smallholders plot with national forest area based on Minister of Forestry Decree No. 529 of 2012 dated 25 September 2012 regarding forestry area of Central Kalimantan. Based on this map, the smallholders area are outside of forest area.</p>	
Status: Comply	
2.5 For new plantings. smallholders do not clear or acquire any land without obtaining the free. prior and informed consent (FPIC). of local communities and indigenous people. based on a simplified FPIC approach.	
Do any smallholders within the group have plans for new plantings of oil palm? If none. SKIP	
<p>Based on document review, interview, as well as field observation, there is no a new planting conducted by smallholders.</p>	
Status: Comply	
PRINCIPLE #3 Commitment to long-term economic and financial viability	

3.1
There is no use of forced labour.

The results of interviews with smallholders and smallholder workers revealed that workers who work in the farmer's plantation are family members or others who still have family relations with smallholders. The results of the interview also revealed that there was no compulsion in working in the farmer's plantation. Smallholder workers who still have family relations said that the work carried out in the farmer's plantation in accordance with the agreement made by both parties.

Workers who carry out harvesting and maintenance activities already have a Work Agreement with the smallholder who owns the land. For example, in the Work Agreement number 004 / SA / PK / XI / 2020 dated November 21 at the Sumber Agung village work location, a work agreement between Independent Smallholders who are members of the Association and 2 workers for harvesting and maintenance. The Agreement Letter contains the Wages and Benefits obtained and the term of the agreement.

Status: Comply

3.2
Children are not employed or exploited. Work by children is acceptable on family farms, under adult supervision and when not interfering with education programmes. Children are not exposed to hazardous working conditions.

APKSM already has a Joint Policy and Commitment which was signed by the Manager, Secretary and Treasurer of the Oil Palm Smallholders Association on April 30, 2019. In point 5, it is stated that the provision of work protection for female workers in the workplace by preventing sexual harassment and violence, protection of reproduction and do not employ minors.

The association has conducted socialization related to workers' rights and conditions as well as wages, for example:

- August 22, 2020 at Kadipi Jaya Village which was attended by 13 people.
- 26 August 2020 in Sumber Agung village attended by 38 people from Sumber Agung Village smallholder groups
- August 21, 2020 in Sungai Rangit Jaya Village, which was attended by 28 residents from Sungai Rangit Jaya Village and Pangkalan Durin Village.
- 12 November 2020 at Sumber Agung Village which was attended by 11 people.

Based on the results of field visits to the Mandiri Usaha Smallholder group in Sungai Rangit Jaya Village and Pangkalan Durin Village, the smallholders have understood the policy of prohibiting the employment of minors.

Status:

3.3
Workers' pay complies with minimum legal requirements, mandatory industry standards as defined by national law or collective bargaining, whichever takes priority in local regulations.
Are there workers on the farm? If no, SKIP

Cooperative of Karya Sari has a list of workers, for example 6 harvesters, 3 maintenance people, 1 loading and unloading person, etc. Workers who carry out harvesting and maintenance activities already have a Work Agreement with the smallholder who owns the land. For example, in the Work Agreement number 004 / SA / PK / XI / 2020 dated November 21 at the Sumber Agung village work location, a work agreement between Independent Smallholders who are members of the Association and 2 workers for harvesting and maintenance. The Agreement Letter contains the Wages and Benefits obtained and the term of the agreement.

Article 2 relates to Wages and Benefits with the following details:

- Wages are paid each time the work is completed no later than one week after the work is completed
- Workers' wages are paid referring to and based on the Decree of the Governor of Central Kalimantan regarding the sectoral minimum wage of Central Kalimantan Province or the Provincial Minimum Wage (UMSP or UMP) in effect during that period.

The association shows the Decree of the Governor of Central Kalimantan number 32 of 2019 concerning the Minimum Wage for Central Kalimantan Province 2020 dated November 1, 2019 which sets the amount of IDR 2.903.144.7 per month.

The association also has set a piece rate that applies to 2020, for example for Harvest Labor the standard wage used is IDR 150.000 / ton FFB and the wage for spraying is IDR 300.000 per hectare.

In addition, APKSM also shows payment slips for workers at cooperative of Karya Sari for the period November 2020. for example:

- M (Harvester)
 - Wages of IDR 8.698.755
 - Cut of groceries IDR 759.000
 - Loan discount of IDR 200.000
 - Loan discount of IDR 950.000
 - Wages received are IDR 6.289.755
- S (care)
 - Wages of IDR 1.482.000
 - cut for groceries IDR 43.000
 - The wages received are IDR 1.439.000

The results of the interview with the group manager stated that he knew the minimum wage in the area. For wages that are valid in association. it refers to the applicable minimum wage. However. it is in accordance with the conditions and working hours which are not like working hours at the company (7 working hours). The average smallholder works from 7 to 10 o'clock in the morning and the maximum works until 12 noon.

Based on the description above. the workers' wages are in accordance with the minimum requirements in the applicable law. namely the Minimum Wages set by the local government.

Status: Comply

3.4

Workers understand their rights and freedom to file a complaint to group manager or relevant third parties. including RSPO.

Are there workers on the farm? If no. SKIP

The association has the SOP Responses to requests for information, grievance and complaints (No. 028/SOP/AKM/CERT/IX/2019) that explain the process of delivering and handling complaints and grievances internally and externally. In the SOP also mentioned that the company guarantees the anonymity of the reporting and the whistle blower.. Head of Administration is responsible for hearing and record all complaints and grievances that exist both orally and in writing from the external. Responses to the complaint and dissatisfaction is given as soon as possible and no later than two weeks after the issue received. SOP Handling Complaints and Dissatisfaction only up to the enterprise level. Based on interviews with management. if there is no solution in the complaint mechanism. can be brought to the RSPO Complaint System.

Based on interviews with employees. village representatives. and union leaders. it is known that they have understood the mechanism to complaint..

Interview auditors while in the field with owners of plasma plots. workers or representatives they already know the grievance mechanism. The mechanism has also been submitted through installation at the cooperative office.

The whole recording and handling of related complaints recorded in the *Buku Rekap Komunikasi / Keluhan*"". According to interviews with workers and communities there are no complaints or dis-satisfaction.

The association has shown evidence of socialization related to the mechanism for submitting complaints to smallholder members. for example as follows:

- Socialization on 21 August 2020 for members in Sungai Rangit Jaya Village which was attended by 28 people
- Socialization on 11 November for members in Kadipi Atas Village which was attended by 18 people
- Socialization on 12 November 2020 for members in Sumber Agung Village which was attended by 11 people

Status: Comply

3.5

Working conditions and facilities are safe and meet minimum legal requirements.

Cooperative of Karya Sari provides a Worker's Mess with a non-permanent 5-door building consisting of 1 bedroom and bathroom).

As for the source of water for clean water from wells. for drinking water with refill water / gallon. Health facilities are in the form of Auxiliary Puskesmas which is \pm 300 meters away and Pandu Senjaya Puskesmas within \pm 5 km from the cooperative office). Educational facilities ranging from early childhood education. kindergarten and elementary school. as well as other public facilities such as places of worship (mosques and churches). lighting facilities are sourced from PLN. All facilities can be accessed by association officials. smallholders and workers.

The association has prepared Personal Protective Equipment for smallholders that are stored in their respective smallholder groups, this is evidenced by the document of the Handover of PPE on December 10, 2020 as follows, for example:

- Minutes of Handover of Personal Protective Equipment to the Tani Maju Bersama group with details of 20 pairs of boots, 30 pcs of safety helmets and 4 sets of first aid bags.
- Minutes of Handover of Personal Protective Equipment to the Kadipi Mandiri Smallholder group with details of 15 pairs of boots, 20 pcs of safety helmets and 4 sets of first aid bags.
- Minutes of Handover of Personal Protective Equipment to the Independent Business Smallholder group with details of 15 pairs of boots, 20 pcs of safety helmets and 4 sets of first aid bags.

Based on field visits. the smallholders have used PPE such as helmets and boots provided.

	Status: Comply
--	-----------------------

3.6

There is no discrimination. harassment. or abuse on the farm

Are there workers on the farm? If no. SKIP

The association has a Joint Policy and Commitment which was signed by the Manager. Secretary and Treasurer of the Oil Palm Smallholders Association on April 30, 2019. In point 5. it is stated that the provision of work protection for female workers in the workplace by preventing sexual harassment and violence. protection of reproduction and do not employ minors.

In addition. Policy on the prevention of sexual harassment and violence and other forms contained in Decree Letter No. 05 / SK / APKSM / VI / 2019 dated 03 June 2019. The association showed evidence of documentation of the socialization of all policies and procedures owned by the association conducted on 21 August 2019. The results of interviews with association and smallholder stated that the association has socialized the procedures and policies.

In addition. the Association has conducted outreach related to policies related to providing job protection for female workers in the workplace by preventing sexual harassment and violence. protection against reproduction. for example:

- August 22, 2020 at Kadipi Jaya Village which was attended by 13 people.
- 26 August 2020 in Sumber Agung village attended by 38 people from Sumber Agung Village smallholder groups
- August 21, 2020 in Sungai Rangit Jaya Village. which was attended by 28 residents from Sungai Rangit Jaya Village and Pangkalan Durian Village.
- 12 November 2020 at Sumber Agung Village which was attended by 11 people.

Based on field visits and interviews with female smallholder members in the Usaha Tani Smallholder group in Sungai Rangit Jaya Village and Pangkalan Durin Village. it is said that so far they have been working in a safe place and that no acts of violence or harassment have occurred.

	Status: Comply
--	-----------------------

PRINCIPLE #4 Use of appropriate best practices by growers and millers

4.1

High Conservation Values (HCVs) on the smallholder plot or within the managed area and High Carbon Stock (HCS) forests identified after November 2019 using the simplified combined HCV-HCS approach are managed to ensure that they are maintained and/or enhanced.

Due to the addition of 73 smallholders in 2020. 202 plots with a total area of 158.24 Ha. the Association conducted an HCV assessment for all new member smallholders' lands in August 2020 carried out by an RSPO assistant from PT Sawit Sumber Sarana. The identification results stated that no HCV was identified in the smallholder area. Regular monitoring can still be planned and carried out in order to identify potential presence and threats to HCVs in the future.

The HCV Management Plan that will be carried out consists of collecting data and information through monitoring the condition of the land area and biodiversity and disseminating information and communication with direct socialization to smallholder groups and installing signboards related to HCV and RTE.

The Association has shown management programs carried out in the 2020 period. for example. including:

- Animal monitoring has been carried out which is recapitulated in the monitoring form of the results of encounters with animals from each farmer's location. for example on November 10. 2020. there were encounters with squirrels and Truwok birds for monitoring results from 73 smallholder members
- Minutes of Signboard Installation and Repair related to HCV on October 6. 2020
- APKSM has carried out HCV socialization to smallholders. for example on 22 August 2020 it was held at the APKSM office which was attended by 18 from Kadipi Atas Village smallholder groups and 12 November 2020 conducted in Sumber Agung Village and attended by 11 people from Sumber Agung Village smallholder groups

Based on interviews with smallholders. they already know about the protection of flora and fauna as well as HCV areas.

Status: Comply

4.2

Where the existing smallholder plot has been planted and cleared after November 2005 or is on an area identified as HCS forests after November 2019 up to the eligibility period. a remediation and compensation process appropriate for smallholders based on Land Use Change Analysis (LUCA) will be applicable (Reference preamble).

As reported in the Disclosure Template. data provided by the Oil Palm Smallholders Association (APKS) Mandiri. Indonesia in the SRJ area consists of 340 independent independent smallholders but only 146 plots from APKS Mandiri Sungai Rangit Jaya are analyzed in this report. LUCA is carried out in all plasma plantation areas where there is inappropriate land clearing. that is, land clearing after November 2005 without a previous HCV assessment report. The land cover in November 2005 for this land ownership was rubber. totaling up to 116.05 hectares. In addition, APKSM has also shown an email from the RSPO dated January 8, 2020 stating that the Total Raw Non-Complaint Land Clearing is 116.05 hectares and the calculated FCL is 24.55 hectares and there is no need for a remediation plan for APKS Mandiri.

Related to the addition of smallholder members. APKSM has sent a disclosure form to RSPO on 9 November 2020. Email from RSPO on 7 December 2020 stating that out of a total of 73 independent smallholders (202 plots covering 156.99 Ha) there are 66 independent smallholders (176 plots covering 134.84 Ha) of which there is land clearing that is not suitable. that is, land clearing after November 2005 without a previous HCV assessment report. Related to this. APKSM also shows the email between APKSM and RSPO for data completeness and also corrections provided by RSPO for differences in calculations between land owners and land area.

On December 5, 2020, APKSM sent an email to RSPO for corrections related to the difference in calculations. RSPO has received the repair and informed via email on 7 December 2020 that currently the corrective document has been submitted to the GIS consultant and will be notified again if there is an update.

Until the ASA 1 audit is carried out. to increase the scope of certification with 66 smallholder members and a total area of 134.84 hectares identified as areas with land clearing above 2005 without an HCV assessment report. The Independent Oil Palm Smallholders Association has not been able to produce the LUCA identification results that have been approved by the RSPO.

The association has not been able to show the results of the LUCA identification that has been approved by the RSPO for the addition of the certification scope of 66 people and a total area of 134.84 Ha identified as areas with land clearing above 2005 without a previous HCV assessment report. **It was raised as nonconformity No. 2020.01.**

Status: Non conformity No 2020.01 with major category

4.3

New plantings of independent smallholders. since November 2019:

- Do not replace any HCVs
- Do not replace any HCS forests as defined by the simplified combined HCV-HCS approach
- Are not on steep slopes (more than 25 degrees or as in NI) has been fixed and added to the report.
- Are not on peat areas of any depth.

Do any smallholders within the group have plans for new plantings of oil palm? If none. SKIP		
Based on the results of interviews and field visits, it was stated that there were no plans for new land clearing or replanting activities at the time the ASA 1 audit activity was carried out.		
	Status: Comply	
4.4		
Where smallholder plots exist on peat. subsidence and degradation of peat soils is minimised by use of best management practices.		
Do any smallholders within the group have existing plots on peat? If no. SKIP		
APKSM shown a map that informs the land conditions and characteristics of the land at Certified unit. Based on soil detail maps obtained information if soil type in APKSM is Podsolik. There is no peat area or marginal area. Based on the results of field visits to several farmer groups, no peat areas were found that were managed or cultivated by the smallholders.		
	Status: Comply	
4.5		
Plots on peat are replanted only on areas with low risk of flooding. saline intrusion as demonstrated by a risk assessment.		
Do any smallholders within the group have plans for replanting plots that are located on peat? If no. SKIP		
APKSM shown a map that informs the land conditions and characteristics of the land at Certified unit. Based on soil detail maps obtained information if soil type in APKSM is Podsolik. There is no peat area or marginal area. Based on the results of field visits to several farmer groups, no peat areas were found that were managed or cultivated by the smallholders.		
	Status: Comply	
4.6		
Fire is not used on the oil palm plot for preparing land or for pest control. nor open fire for waste management on the farm.		
Smallholders have a commitment not to use fire for land preparation. pest control. or waste management as stated in the Farmer's Statement which has been signed by each member farmer.		
APKSM has also conducted training related to fire control (control of land fires) as stated in the minutes of the implementation of activities carried out on July 7. 2020 with activity materials such as the formation of a fire fighting team. fire hazard training. and simulation of emergency response and K3.		
Based on the results of interviews with association group managers, it was found that there was no use of fire by member smallholders in land clearing activities. and pest control. This is reinforced by the results of field visits to several smallholders where there were no traces of fire use on the planters' land and when the audit was carried out there were no Land Clearing activities in the areas managed by the Association, as well as additional information from interviews with village officials (for example, interviews with the head of the Sungai Rangit village) that there has never been land clearing using fire.		
	Status: Comply	
4.7		
Riparian buffer zones are identified and managed to ensure they are maintained and/or enhanced.		
The group manager has identified the buffer zone for the river area as stated in the high conservation assessment document in the APKSM member's plantation area. In this document. there is a form for assessing high conservation value in plantation areas. Based on this document. no river boundaries were identified around the area managed by smallholders.		
APKSM has also shown a map of the APKSM smallholder area. Pangkalan Lada Subdistrict. Kotawaringin Barat Regency. Central Kalimantan where there is no river distribution in the APKSM management area.		
APKSM already has training materials and plans and outreach for members for the 2020 period. APKSM has conducted training for members covering palm oil pricing. financial management and best practices for plantation organizations. One example of the training carried out is the training for Independent Smallholders Standards. group certification. BMP. PHT. HCV. Smallholder Book Recording		

and Business Reporting which was held on August 22. 2020		
Based on the study of location map documents. documents for high conservation assessment in plantation areas and field visits to several APKSM smallholder groups. it was found that there were no plantation areas adjacent to the river.		
	Status: Comply	
4.8		
Pesticides are used in ways that do not endanger health of workers. family. communities or the environment.		
APKSM has committed to prohibiting the use of pesticides with active ingredients of paraquat or WHO class 1A / 1B pesticides as stated in Decree No. 02 / SK / AM / V / 2019. Besides. APKSM also has proof of pesticide purchases made by smallholders.		
APKSM already has training materials and plans and outreach for members for the 2020 period. APKSM has conducted training for members covering palm oil pricing. financial management and best practices for plantation organizations. One example of the training carried out is the training on Independent Smallholders Standards. group certification. BMP. IPM. HCV. Smallholder Book Recording and Business Report which was held on August 22. 2020.		
Based on the results of field visits to several smallholders. it was found that smallholders were not allowed to use pesticides with active ingredients of paraquat for weed control and smallholders were also able to explain that pesticide spraying work should not be carried out by pregnant or breastfeeding women.		
	Status: Comply	
4.9		
The group and smallholders manage pests. diseases. weeds and invasive introduced species using appropriate techniques. including but not limited to Integrated Pest Management (IPM) techniques.		
APKSM already has training materials and plans and outreach for members for the 2020 period. APKSM has conducted training for members covering palm oil pricing. financial management and best practices for plantation organizations. One example of the training carried out is the training on Independent Smallholders Standards. group certification. BMP. IPM. HCV. Smallholder Book Recording and Business Report which was held on August 22. 2020.		
Based on the results of field visits and interviews with several smallholders. it was found that there were no attacks by pests and diseases in the areas managed by smallholders and smallholders were able to explain the use of pesticides. including the target of these pesticides. Smallholders are also able to explain the use of owls and beneficial plants as a way of breeding natural enemies from pests and diseases. Smallholders also explained that there was no use of pesticides for pest and disease control because there was no attack.		
	Status: Comply	

3.2 Conformity Checklist of Certificate and Trademark Use

1.	Evidence of permission or approval certificate and logo from Certification Body which submitted by Client	X or √
ASA 1	Association does not use RSPO trademark.	√
	Status: Comply	
2.	Implementation of certificate and logo used by Client comply with size and type (shape) against Guideline of Logo Use	X or √
ASA 1	Association does not use RSPO trademark.	√
	Status: Comply	
3.	Implementation of Certificate and Logo is not used on product	X or √
ASA 1	Association does not use RSPO trademark.	√
	Status: Comply	
4.	Controlling of Certificate and Logo, including withdrawing inappropriate logo.	X or √
ASA 1	Association does not use RSPO trademark.	√
	Status: Comply	

3.3. Identification of Findings. Corrective Action. Observations. Opportunity for Improvement and Noteworthy Positive Components.
3.3.1 Identification of Findings. Corrective Actions and Observations at Initial Assessment.

NCR No.	:	2019.01.	Issued by	:	Ardiansyah
Date Issued	:	20 September 2019	Time Limit	:	19 September 2020
NC Grade	:	Major	Date of Closing	:	26 September 2019
Standard Ref. & Requirement	:	2.1.1 Evidence of compliance with relevant legal requirements shall be available.			
Evidence observed (filled by auditor): The results of the field visit revealed that there was hazardous waste produced from the management of the plantation in Kadipi Atas Village and stored in the hazardous waste warehouse. Interviews with APKSM management and supporting companies revealed that the hazardous waste warehouse does not have a permit.					
Non-Conformance Description (filled by auditor): Hazardous waste has not been placed in a place that has a permit from the relevant agency.					
Root Cause Analysis (filled by organization audited): APKSM does not yet have a license hazardous waste warehouse because waste production in APKSM is only small scale in a year.					
Correction (filled by organization audited): Coordination with related agencies to conduct field visits and provide recommendations to APKSM.					
Corrective Action (filled by organization audited): APKSM will implement recommendations issued by related agencies.					
Assessor Evaluation and Conclusion (filled by auditor): Verification 26 September 2019 APKSM has coordinated with the Office of the Environment (<i>DLH</i>) of Kotawaringin Barat District related to the hazardous waste warehouse area. <i>DLH</i> conducted field verification in accordance with the Task Order dated 24 September 2019, which was carried out by 3 people, namely the Head of Hazardous Waste and Waste Management, the Head of the Hazardous Waste Section and administrative officers. The field verification activity was carried out on 25 September 2019 and explained in the minutes of assistance for the construction of a Hazardous waste warehouse facility. Based on the results of field verification, there are a number of things that must be completed by APKSM such as providing information, naming each type and characteristic of hazardous waste, applying for a permit to store hazardous waste to the Investment and One Stop Service Office, etc. Based on the evidence of the improvement, the Non conformity was stated to be fulfilled and will be re-observed related to the hazardous waste warehouse permit for APKSM operational activities.					
Verified by	:	Ardiansyah			

NCR No.	: 2019.02	Issued by	: Moh Arif Yusni
Date Issued	: 20 September 2019	Time Limit	: ASA 1
NC Grade	: Minor	Date of Closing	: 15 December 2020
Standard Ref. & Requirement	4.1.2 Checking or monitoring of operations procedures is conducted at least once a year.		
Evidence observed (filled by auditor): The results of document verification, interviews and field visits obtained information there is no evidence that routine operational monitoring has been carried out by the smallholders to ensure that all activities are in accordance with the procedures that owned. This is evidenced by the results of a field visit to from 11 sample locations. it was found that there were significant differences in the physical conditions of the field.			
Non-Conformance Description (filled by auditor): Not sufficient evidence is available that routine monitoring of operational activities has been carried out in relation to compliance with procedures.			
Root Cause Analysis (filled by organization audited): Because the RSPO certification program just now implemented, the ICS of APKSM has not yet conducted monitoring			
Correction (filled by organization audited): ICS of APKSM develops a program to monitor plantation operations			
Corrective Action (filled by organization audited): Implementing a monitoring program for plantation operations			
Assessor Evaluation and Conclusion (filled by auditor): Verification 15 December 2020 Observed evidence: <ul style="list-style-type: none"> • Internal Audit SOP. Document No 003 / SOP-UPI / APKSM / VII / 2019 effective July 2019 • 2020 internal audit report: <ul style="list-style-type: none"> - Internal Audit January 28 - 30, 2020, there were 6 findings of non-conformities and all of them were declared fulfilled on March 31, 2020 - Internal Audit 27-28 July 2020 there were 14 findings of non-conformities and all of them were declared fulfilled on 30 September 2020 <p>Based on the evidence observed, the non-conformity is declared as complied.</p>			
Verified by	:	Arif Faisal Simatupang	

NCR No.	: 2019.03	Issued by	: Moh Arif Yusni
Date Issued	: 20 September 2019	Time Limit	: ASA 1
NC Grade	: Minor	Date of Closing	: 15 December 2020
Standard Ref. & Requirement	: 4.1.3 Records of monitoring and any follow-up actions shall be available.		
Evidence observed (filled by auditor): <p>In Karyasari Cooperative record of activity presented in the documents harvesting production. recapitulation of daily upkeep and etc. furthermore in Usaha Tani Mandiri Smallholder group its recorded in "<i>Buku Catatan Petani Kelapa Sawit</i>". that's described . Smallholder Identity Data. Production Reports. upkeep realization. pruning programs and realizations and etc.</p> <p>However. based on the results of documents verification. it is known that smallholders have not consistently documented field activities regularly and updated in the notebooks (<i>Buku Catatan Petani Kelapa Sawit</i>).</p>			
Non-Conformance Description (filled by auditor): <p>Not yet available that all field operations have been documented</p>			
Root Cause Analysis (filled by organization audited): <p>Independent smallholders do not yet fully understand the contents of the Smallholder Notebooks</p>			
Correction (filled by organization audited): <p>Conducted a meeting again to 44 independent smallholder in Sungai Rangit Jaya Village related to the Smallholder Logbook filling system</p>			
Corrective Action (filled by organization audited): <p>The Mandiri Smallholders Group arranges a book closing schedule every month to monitor the recording of Smallholder Books.</p>			
Assessor Evaluation and Conclusion (filled by auditor): <p>Verification on 15 December 2020</p> <p>APKSM has conducted training related to the procedures for recording and filling in the Palm Oil Smallholder Record Book which was held on August 22. 2020.</p> <p>APKSM has also shown the Palm Oil Smallholder Record Book document. The document contains data on FFB production. harvest costs. and maintenance costs.</p> <p>Based on the results of interviews with several independent smallholders in the Sumber Agung Smallholder group. the smallholders have understood how to fill in and the benefits of filling in the notebook.</p> <p>Based on the document review and the results of interviews with smallholders. this discrepancy was declared as complied.</p>			
Verified by	:	Arif Faisal Simatupang	

NCR No.	: 2019.04	Issued by	: Moh Arif Yusni
Date Issued	: 20 September 2019	Time Limit	: 19 September 2020
NC Grade	: MAJOR	Date of Closing	: 28 September 2019
Standard Ref. & Requirement	4.2.1 A record of SOP implementation to maintain soil fertility that ensures optimal and sustained yield, shall be available		
Evidence observed (filled by auditor): APKSM has had Good Agricultural Practices (GAP) procedure in managing soil fertility that presented in Manuring Procedure (SOP 08-UPP/APKSM/VIII/2019). On that's procedure described several items that can conducted by the smallholders to managing soil fertility as follows: <ol style="list-style-type: none"> 1. Identification of crop nutrient needs 2. Determine fertilizer dosage, if smallholders have difficulty in determining the dosage, smallholders can consult the cultivation unit 3. Fertilization activities are recorded by smallholders regarding the type of fertilizer, fertilizer dose and date of fertilization 4. Smallholders are encouraged to start using organic fertilizer <p>As an implementation of this procedure APKSM has carried out soil, leaf and visual analysis carried out by Eldest Research Station. analysis results found that there are nutrient deficiencies (N, P, K, Mg, B, etc.) with moderate and severe levels. In this regard APKSM has not been able to show a record of implementation to maintain / improve soil fertility in accordance with the procedure that owned</p>			
Non-Conformance Description (filled by auditor): APKSM has not been able to show a record of implementation to maintain / improve soil fertility in accordance with the procedure that owned			
Root Cause Analysis (filled by organization audited): The organization has not been able to maintain / improve soil fertility according to procedures due to financial considerations from the organization and consideration of replanting activities in 16 smallholder groups in Kadipi Atas Village.			
Correction (filled by organization audited): The organization will prepare a fertilization plan program at a location where replanting activities will not be carried out and create an internal memo related to the implementation of replanting.			
Corrective Action (filled by organization audited): Work program of fertilizer in the whole group and adjust based on need.			
Assessor Evaluation and Conclusion (filled by auditor): Verification 28 September 2019 APKS can presented the corrective evidence as follows <ul style="list-style-type: none"> - Replanting program in 2020 in KUD Karya Sari consisting of four phases with phase 1: 153.11 ha; area phase 2: 102 Ha; phase 3: 118 Ha and phase 4: 66.00 Ha - Fertilization program in the Usaha Tani Mandiri Smallholders Group in November 2019 <p>From the evidence that presenting shown, the non-conformity is stated to closed and will be observed again in the next assessment activity.</p>			

Verified by	:	Moh Arif Yusni
--------------------	----------	-----------------------

NCR No.	:	2019.05	Issued by	:	Moh Arif Yusni
Date Issued	:	20 September 2019	Time Limit	:	19 September 2020
NC Grade	:	Major	Date of Closing	:	28 September 2019
Standard Ref. & Requirement	:	4.6.6 Storage of pesticides shall be according to recognised best practices. All pesticides containers shall be properly managed according to the existing regulations and or instructions enclosed on the containers (see criterion 5.3).			
Evidence observed (filled by auditor): APKSM has had a pesticide storage area located in Kadipi Atas Village and Sungai Rangit Jaya Village. However, based on the results of the field visit it was found that the storage area was not yet equipped with adequate supporting facilities and infrastructure such as symbols and information related to safety and emergency response facilities (including spill handling)					
Non-Conformance Description (filled by auditor): Pesticides have not been stored according to best practices in accordance with procedures.					
Root Cause Analysis (filled by organization audited): The condition of the warehouse currently still in progress.					
Correction (filled by organization audited): OSH symbols and information and emergency response facilities will be added according to the procedure.					
Corrective Action (filled by organization audited): Conducting regular monitoring / inspection related to hazardous material management.					
Assessor Evaluation and Conclusion (filled by auditor): Verification 28 September 2019 APKS can presented the corrective evidence as follows <ul style="list-style-type: none"> - Minutes of the installation of the OSH and Emergency Response symbol in the fertilizer warehouse and Chemical warehouse in Kadipi Atas Village on September 23, 2019 - Documentation of OSH Installation of Symbols and Emergency Response in a warehouse located in Kadipi Atas Village - Minutes of the installation of the OSH and Emergency Response symbol in the fertilizer warehouse and Chemical warehouse in Sungai Rangit Jaya Village on September 23, 2019 - Documentation of OSH Installation of Symbols and Emergency Response in a warehouse located in Sungai Rangit Jaya Village <p>From the evidence that presenting shown, the non-conformity is stated to close and will be observed in the next assessment activity.</p>					
Verified by	:	Moh Arif Yusni			

NCR No.	:	2019.06	Issued by	:	Moh Arif Yusni
Date Issued	:	20 September 2019	Time Limit	:	19 September 2020
NC Grade	:	Major	Date of Closing	:	26 September 2019
Standard Ref. & Requirement	:	4.7.4 The responsible person(s) for occupational health and safety shall be identified and there shall be records of periodical meetings on health and safety issues			
Evidence observed (filled by auditor): The structure of the APKSM Occupational Safety and Health Advisory Committee was approved on 10 May 2019 by the Chairperson, with an organizational structure consisting of a supervisor, chairman, treasurer, secretary and coordinator. The results of the document review are known to have not been able to show <i>P2K3</i> approval from the authorized service and <i>P2K3</i> secretary not yet certified OHS Expert.					
Non-Conformance Description (filled by auditor): From the explanation above, there is not enough evidence <i>P2K3</i> has established by APKSM in accordance with Manpower Minister Regulation No. 4 of 1987.					
Root Cause Analysis (filled by organization audited): There has not been any specific designation for OHS Implementing Officers in APKSM and there are no activities available to improve competency to the appointed officers.					
Correction (filled by organization audited): Appoints one of the employees at APKSM and conducts an intensive training program for the person concerned.					
Corrective Action (filled by organization audited): Officers who have received intensive training will conduct monitoring activities related to OHS.					
Assessor Evaluation and Conclusion (filled by auditor): Verification 26 September 2019 APKSM shows the documentary evidence as follows: <ul style="list-style-type: none"> Decree No. 01 / SK / APKSM / IX / 2019 dated September 25, 2019 on behalf of Kirmaji (Head of the Field of plantation) as the executive officer of occupational safety and health activities in the Association. In the Decree it explains the duties and responsibilities for example carrying out the task of OHS socialization. OHS Training Schedule and Program for OHS Implementing Officers. Minutes of the implementation of OHS training activities on 24 and 25 September 2019 for OHS Implementing Officers with trainers from PT SSMS personnel as a companion company to the APKSM certification process. The OHS material delivered includes basic OHS, emergency response, first aid kit and PPE. From the evidence shown, the non-conformity is stated to be fulfilled and will be observed in the next assessment activity.					
Verified by	:	Moh Arif Yusni			

NCR No.	:	2019.07	Issued by	:	Moh Arif Yusni
Date Issued	:	20 September 2019	Time Limit	:	ASA 1
NC Grade	:	Minor	Date of Closing	:	12 December 2020
Standard Ref. & Requirement	:	4.7.5 A procedure for emergency and work accident shall be available in Indonesian Language; and the workers. who have attended First Aids training. are available in the working areas			
Evidence observed (filled by auditor): The results of observations on operational activities and interviews found out that smallholders members or workers have not brought first aid kit in field operational activities.					
Non-Conformance Description (filled by auditor): Referring to the explanation above. there is not enough evidence that first aid kit is available at the work site when operational activities are carried out by smallholders or workers who have received first aid kit training.					
Root Cause Analysis (filled by organization audited): Not all smallholder members were present when the first aid training was carried out by APKSM					
Correction (filled by organization audited): Hold meetings and outreach to workers and disseminate information on the use of first aid kit					
Corrective Action (filled by organization audited): Handover the first aid bag and its contents to the foreman or smallholder group representative in Sungai Rangit Jaya Village					
Assessor Evaluation and Conclusion (filled by auditor): Verification 15 December 2020 APKSM has shown evidence of improvement in the form of an Official Report on the Implementation of the Handover of Personal Protective Equipment as follows: <ul style="list-style-type: none"> • December 10 with details of 20 pairs of boots. 30 pcs of safety helmets and 4 sets of first aid bags. • December 10 with details 15 pairs of boots. 20 pcs of safety helmets and 4 sets of first aid bags. • December 10 with details 15 pairs of boots. 20 pcs of safety helmets and 4 sets of first aid bags. APKSM has also conducted socialization related to First Aid for Accidents and Emergency Response. with evidence. among others: <ul style="list-style-type: none"> - On 21 August 2020 in Sungai Rangit Jaya Village which was attended by 28 smallholders and Kadipi Atas Village which was attended by 13 smallholders In addition. based on field observations and interviews with the Usaha Mandiri smallholder group in Sungai Rangit Jaya Village. several members of the smallholder group have been equipped with bags containing first aid kits (P3K). Based on evidence of improvement and results of field observations and interviews with smallholders. nonconformity in this indicator has been complied.					
Verified by	:	Nurdin Chaeriana			

NCR No.	:	2019.08	Issued by	:	Moh Arif Yusni
Date Issued	:	20 September 2019	Time Limit	:	ASA 1
NC Grade	:	Minor	Date of Closing	:	12 December 2020
Standard Ref. & Requirement	:	4.7.6 All workers shall be provided with medical care. and covered by accident insurance (see criterion 6.5.3)			
Evidence observed (filled by auditor): The results of the review of the following documents are known: <ul style="list-style-type: none"> The list of workers shows that there are 20 (casual) field workers and 15 management employees. List of <i>BPJS</i> Employment and Salary Recap of August 2019. 7 workers who have been registered in the <i>BPJS</i> Employment program. 					
Non-Conformance Description (filled by auditor): Referring to the explanation above. it is not enough evidence that all workers have been protected by work accident insurance.					
Root Cause Analysis (filled by organization audited): Not all workers have work accident insurance					
Correction (filled by organization audited): Make a Worker Safety Guarantee policy that protects workers who are within the scope of APKSM					
Corrective Action (filled by organization audited): APKSM conducts socialization and announcements to the public regarding Worker Safety Assurance					
Assessor Evaluation and Conclusion (filled by auditor): Verification 15 December 2020 With regard to accident insurance coverage for workers, a Mutual Agreement has been made between members of the Association and the APKS-Mandiri Management regarding Manpower compensation which has been signed by the Group Management as a representative of the members in 17 smallholder groups with a total of 340 members and also the Association Management. 25 September 2019 and will be in effect until the new policy is agreed upon by the members. In this document, it is stated in Article 7 that it explains the benefits of compensation that will be received by workers in the oil palm smallholders as follows: <ol style="list-style-type: none"> Accident insurance Death insurance due to death accidents at work and for job security consists of: <ol style="list-style-type: none"> Minor accident guarantee Accident coverage is medium Heavy Accident Benefits Permanent or permanent disability accident insurance The death benefit due to a work accident due to a work accident will receive a death benefit if prior to death there is treatment or medication. the security fee will be charged according to the type of work accident. In addition APKSM has shown a Cooperation Agreement between the APKSM and Pandu Senjaya <i>Puskesmas</i> (Pandur Senjaya Village) regarding Health Services for APKSM Workers on March 30. 2020 with an agreement period of 1 year that guarantees the					

health of workers by providing free medical treatment for workers who has been borne by the APKSM.

Based on the evidence of improvement shown, the discrepancies in this indicator are declared as complied.

Verified by	:	Nurdin Chaeriana
--------------------	----------	-------------------------

3.3.2 Identification of Findings. Corrective Actions and Observations at ASA-1

NCR No.	:	2020.01.	Issued by	:	Arif Faisal Simatupang
Date Issued	:	16 December 2020	Time Limit	:	16 March 2021
NC Grade	:	MAJOR	Date of Closing	:	01 March 2021
Standard Ref. & Requirement	:	<p>B.1.1 Eligibility A group ICS is available for operational management including procedures of expulsion and sanctions for members who fail to comply, and a procedure to conduct internal audits.</p> <p>Milestone A The ICS is implemented and an internal audit is conducted for at least half of the group members and all audit findings are closed.</p> <p>Milestone B The ICS is implemented and an annual internal audit of the group is conducted for all group members and all audit findings are resolved.</p>			
<p>Evidence observed (filled by auditor):</p> <ul style="list-style-type: none"> - Internal Audit SOP. Document No 003 / SOP-UPI / APKSM / VII / 2019 effective July 2019 which explains how to take audit samples, namely 0.8 \sqrt{y} x (z). - Internal Audit Report for 2020 which was carried out in January and July 2020. in which the sampling and number of samples in the audit activity were not clearly detailed. <p>Non-Conformance Description (filled by auditor): The Internal Audit SOP has not yet discussed or explained the annual internal audit carried out on 50% of the members for Milestone A, and 100% of the members for Milestone B.</p>					
<p>Root Cause Analysis (filled by organization audited): There is a transition period for the use of RSPO standards for independent smallholders in 2020 so that the implementation of the previously scheduled internal audit, namely in January & July 2020, still uses the old standard.</p>					
<p>Correction (filled by organization audited): Improved the Internal Audit SOP which adjusted the guidance based on the Principles and Criteria of the RSPO Independent Smallholder Standard (RISS) on indicator B1.1 TC - B.</p>					
<p>Corrective Action (filled by organization audited): Carry out internal audit activities according to the program that has been prepared and carried out to all members of the organization</p>					
<p>Assessor Evaluation and Conclusion (filled by auditor): Verification dated March 1, 2021 Observed evidence:</p> <ul style="list-style-type: none"> - Internal Audit SOP, Document No 003 / SOP-UPI / APKSM / VII / 2019 is effective July 2019 Revision 01 which is effective from January 1, 2021. In point 6 of the SOP regarding the audit stage it is explained that the Audit must cover all members. 					

Based on the verification results, the Independent Oil Palm Smallholders Association has an Internal Audit SOP which includes all members of the association as the object of the internal audit activity. Thus this non-conformity is declared fulfilled. Regarding the implementation of internal audit activities in accordance with the Internal Audit SOP, Document No 003 / SOP-UPI / APKSM / VII / 2019 Revision 01 will be verified during surveillance activities 2.

Verified by : **Arif Faisal Simatupang**

NCR No.	:	2020.02.	Issued by	:	Nurdin Chaeriana
Date Issued	:	16 December 2020	Time Limit	:	16 March 2021
NC Grade	:	Major	Date of Closing	:	21 January 2021
Standard Ref. & Requirement	:	<p>4.2 Where the existing smallholder plot has been planted and cleared after November 2005 or is on an area identified as HCS forests after November 2019 up to the eligibility period, a remediation and compensation process appropriate for smallholders based on Land Use Change Analysis (LUCA) will be applicable (Reference preamble).</p> <p>Eligibility Smallholders provide information on all smallholder plots converted and planted with oil palm after 2005, through use of the simplified combined HCV-HCS approach for Smallholders (reference 1.1 E, Annex 2).</p> <p>MS-A Group members develop a plan to identify the maximum area for on-site remediation of HCVs lost since 2005 and HCS forests lost since November 2019, through a participatory process and the plan is submitted to RSPO.</p> <p>MS-B An RSPO approved plan to remediate HCVs lost since 2005 and HCS forests lost since November 2019 is implemented.</p>			
<p>Evidence observed :</p> <ul style="list-style-type: none">• HCV assessment conducted in March 2019 for 265 smallholder members with an area of 710.54 Ha• As reported in the Disclosure Template, data provided by the Oil Palm Smallholders Association (APKS) Mandiri, there are 146 plots with an area of 116.05 Ha analyzed in relation to Land Use Change Analysis (LUCA) due to land clearing after November 2005 without a previous HCV assessment report . The land cover in November 2005 for this land ownership was rubber, totaling up to 116.05 hectares. And based on an email from the RSPO dated January 8, 2020, it was stated that the Total Raw Non-Complaint Land Clearing was 116.05 hectares and the Final Conservation Liability (FCL) calculated was 24.55 hectares and based on satellite imagery interpretation there is no need for a remediation plan for APKS Mandiri.• Regarding the additional scope of certification by 73 smallholder members with a total land area of 158.24 Ha, the HCV study was conducted again in August 2020.• APKSM has submitted a disclosure form to RSPO on 9 November 2020.• December 7, 2020 containing an email from the RSPO stating that out of a total of 73 independent smallholders (202 plots covering 158.24 Ha) there were 66 independent smallholders (176 plots covering an area of 134.84 Ha) with land clearing after November 2005 without an HCV assessment report previous.• APKSM also shows the email between APKSM and RSPO for completeness of data and also corrections provided by RSPO for calculation differences between land owners and land area. And the corrected calculation has been submitted again to the RSPO via email on December 5, 2020.					

- RSPO has received the repair and informed via email on 7 December 2020 that currently the corrective document has been submitted to the GIS consultant and will be informed again if there is additional information.

Until the ASA 1 audit was carried out, to increase the scope of certification with 66 smallholder members and a total area of 134.84 Ha identified as areas with land clearing above 2005 without an HCV assessment report, the Association has not been able to show the results of identification of LUCA which has been approved by the RSPO.

Non-Conformance Description :

The Association has not been able to show the results of LUCA identification that has been approved by the RSPO for the extension scope of certification of 66 people and a total area of 134.84 Ha identified as areas with land clearing above 2005 without a previous HCV assessment report.

Root Cause Analysis :

The process of identifying LUCA by RSPO was carried out based on a queued list of submissions and corrections at this stage of submission, resulting in the LUCA report not being approved at the time of the audit.

Correction :

Follow up on existing improvements and coordinate the process of submitting the LUCA identification report to the RSPO until the LUCA report is approved.

Corrective Action :

Apply for LUCA identification early so that the LUCA report has been approved at the time of the external audit.

Assessor Evaluation and Conclusion :

Verification January 28, 2021

The association has shown evidence of improvement as follows:

- Land Use Change Analysis (LUCA) report of the Independent Oil Palm Smallholders Association for the addition of 66 smallholder members with 176 plots of 134.84 Ha on January 27, 2021. In the conclusion it is stated that the status of LUCA "Pass" with Final Conservation Liability (FCL) is 0 Ha and remediation is 0.06 Ha.
- Email from RSPO dated 27 January 2021 stating that the total Non-compliant land clearing (NCLC) is 129.75 hectares. Final Conservation Liability (FCL) is 0 Ha. From the interpretation of satellite imagery, there are 2 plots located close to the river channel, requiring remediation of 0.06 hectares, on behalf of Suharti and Nardi Sugito.

Based on the verification results, the Association has been able to explain the root cause analysis and corrective action of any non-conformities that have emerged and has been able to demonstrate the approval of the RSPO Land Use Change Analysis (LUCA). Thus the non-conformity in this indicator are declared as fulfilled. Regarding remediation of 0.06 Ha, verification will be carried out when the Surveillance 2 audit is conducted.

Verified by : **Nurdin Chaeriana**

3.3.3. Opportunity for Improvement

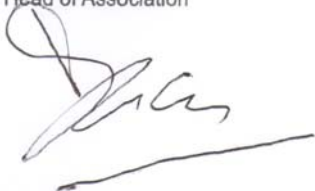

No	Ref. Std.	Description
-	-	-

3.3.4. Noteworthy Positive Components

No	Description
1	APKSM has created a monthly Bulletin as a substitute medium for face-to-face socialization and training activities during the Covid-19 pandemic.
2	Increased interest of other independent smallholders to join the certification process

3.4 Summary of Arising Issues from Public and Auditor Verification.

Public Issues (Institution/ NGO/Community)	Auditor Responses
Head of Kadipi Atas Village and Secretary of Sungai Rangit Jaya Village <ul style="list-style-type: none"> - The association has a positive impact on the people of Kadipi Atas Village. for example. it can increase the community's economy and is expected to also increase the income of the Village Government. - The Village Government always supports every activity that can help community life. There is no land conflict in the area of the association members - The association has also provided socialization regarding the prohibition of burning in operational areas. - There is no issue of pollution and fire in association area 	<p>There was no negative issue that need further verification.</p>
Head of Pangkalan Durin Village <ul style="list-style-type: none"> - The association has a positive impact on the people of Kadipi Atas Village. for example. it can increase the community's economy and is expected to also increase the income of the Village Government. - The Village Government always supports every activity that can help community life. There is no land conflict in the area of the association members - The association has also provided socialization regarding the prohibition of burning in operational areas. - There is no issue of pollution and fire in association area - There is no land conflict problem - There is no land clearing by burning 	<p>There was no negative issue that need further verification.</p>
Head of Sumber Agung Village <ul style="list-style-type: none"> - The association has a positive impact on the people of Kadipi Atas Village. for example. it can increase the community's economy and is expected to also increase the income of the Village Government. - The Village Government always supports every activity that can help community life. There is no land conflict in the area of the association members - The association has also provided socialization regarding the prohibition of burning in operational areas. - There is no issue of pollution and fire in association area - There is no land conflict problem - There is no land clearing by burning 	<p>There was no negative issue that need further verification.</p>
Environmental Agency of Kotawaringin Barat Regency <p>APKSM complied with applicable regulations related environmental. among others has had license SPPL. There is no complaints from stakeholder related environmental issue. Currently there are 165 license SPPL from Association members that are in process</p>	<p>There was no negative issue that need further verification.</p>

4.0	CERTIFIED ORGANISATION'S ACKNOWLEDGEMENT OF INTERNAL RESPONSIBILITY
4.1	<p>Formal Sign-off of Assessment Findings</p> <p>Hereunder sign by management representative from inspected company to acknowledge a field assessment and agree for all content explained in this assessment report. included of non-compliance findings.</p> <p>Signed on behalf of:</p> <div style="display: flex; justify-content: space-around; align-items: flex-end;"> <div style="text-align: center;"> <p>Asosiasi Petani Kelapa Sawit Mandiri Head of Association</p>  <p><u>YB Zainanto HW</u> Monday, 01 March 2021</p> </div> <div style="text-align: center;"> <p>Mutuagung Lestari Lead Auditor</p>  <p><u>Arif Faisal Simatupang</u> Monday, 01 March 2021</p> </div> </div>

Appendix 1. List of Stakeholder Contacted in the RSPO Certification Process

No	Institution/ NGO/ Community	Address	Phone/ Email	Form of Communication	Date of Contact	Response	
						Yes	No
1	Environmental Agency of Kotawaringin Barat Regency	Kotawaringin Barat Regency		By Phone	15 December 2020	✓	
2	Head of Kadipi Atas Village	Kotawaringin Barat Regency		By Phone	14 December 2020	✓	
3	Head of Pangkalan Durin Village	Kotawaringin Barat Regency		By Phone	15 December 2020	✓	
4	Head of Sungai Rangit Jaya Village	Kotawaringin Barat Regency		By Phone	15 December 2020	✓	
5	Head of Sumber Agung Village	Kotawaringin Barat Regency		By Phone	16 December 2020	✓	
6	2 Harvester	Kotawaringin Barat Regency		Direct interview	15 December 2020	✓	
7	WWF	Indonesia	Wwf-indonesia@wffi.or.id	Questionnaire	8 December 2020		✓
8	Sawit Watch	Indonesia	info@sawitwatch.or.id	Questionnaire	8 December 2020		✓
9	Walhi	Indonesia	informasi@walhi.or.id	Questionnaire	8 December 2020		✓

Appendix 2. Assessment Program

Date	14 -17 December 2020	
Audit Program /	Clauses To Be Audited	Auditor
Monday, 14 December 2020		
06.00 – 08.00	Flight Jakarta – Pangkalan Bun	All Auditor
09.00 – 11.00	Traveling Pangkalan Bun – Asosiasi Petani Kelapa Sawit Mandiri	All Auditor
11.00 – 12.00	Opening Meeting Opening speech and explanation of audit process	All Auditor
12.00 – 13.30	Break	All Auditor
12.30 – 16.30	Document verification	All Auditor
12.30 – 16.30	Public consultation of nearest Village Office by telephone	All Auditor
Tuesday, 15 December 2020		
08.00 – 12.00	Field observation of smallholder's land, facilities, and operational activity, and interview with smallholders and workers	All Auditor
	Break	
12.00 – 13.30	Document verification	All Auditor
12.30 – 16.30	Public consultation of governmental agencies of Kotawaringin Barat Regency	All Auditor
12.30 – 16.30	Document verification	All Auditor
Wednesday, 16 December 2020		
08.00 – 12.00	Document verification	All Auditor
12.00 – 15.00	Break & auditor internal discussion for closing meeting preparation	All Auditor
15.00 – 16.30	Closing Meeting Presentation of audit findings (non conformities, OFI, timeline of CAR's, conclusion)	All Auditor
Thursday, 17 December 2020		
11.00 – 13.00	Flight Pangkalan Bun – Jakarta	All Auditor