

***Roundtable on Sustainable Palm Oil Certification  
R S P O***

**[ ✓ ] Surveillance**

Name of Management Organisation : Kelompok Tani Karya Bersama  
 Plantation Name : Kelompok Tani Karya Bersama  
 Location : Village of Agung Mulya, Sub District of Antang Kalang, District of Kotawaringin Timur, Province of Kalimantan Tengah, Indonesia  
 Certificate Code : MUTU-RSPO/157  
 Date of Certificate Issue : 03 September 2021    Date of License Issue : 03 November 2022  
 Date of Certificate Expiry : 02 September 2026    Date of License Expiry : 02 September 2023

Assessment	Assessment Date	PT. Mutuagung Lestari Auditor	Reviewed by	Approved by
ASA-1	25 to 28 July 2022	Briyogi Shadiwa (Lead Auditor), Erika Lucitawati	Ardiansyah	Leonada

Assessment	Approved by MUTUAGUNG LESTARI on:
ASA-1	10 November 2022

**TABLE OF CONTENT**
**FIGURE**

Figure 1. Location Map of Kelompok Tani Karya Bersama	1
Figure 2. Operational Map of Kelompok Tani Karya Bersama	2
Abbreviations Used	3

**1.0 SCOPE of the CERTIFICATION ASSESSMENT**

1.1 Assessment Standard Used	4
1.2 Organisation Information	4
1.3 Type of Assessment	4
1.4 Location of Plantations	4
1.5 Description of Area Statement	4
1.6 Planting Year and Cycles	5
1.7 Description of Supply Base	5
1.8 Tonnage Product	5
1.9 Other Certification	6

**2.0 ASSESSMENT PROCESS**

2.1 Assessment Team	7
2.2 Assessment Methodology, Assessment Process and Locations of Assessment	7
2.3 Stakeholder Consultation and Stakeholders Contacted	9
2.4 Determining Next Assessment	9

**3.0 ASSESSMENT FINDINGS**

3.1 Summary of Assessment Report of the RSPO Certification	10
3.2 Conformity Checklist of Certificate and Logo Use	31
3.3 Identification of Findings, Corrective Actions, Observations, Opportunity for Improvement and Noteworthy Positive Components	32
3.4 Summary of Arising Issues from Public and Auditor Verification	40

**4.0 CERTIFIED ORGANISATION'S ACKNOWLEDGEMENT OF INTERNAL RESPONSIBILITY**

4.1 Formal Signing of Assessment Findings	41
---	----

**APPENDICES**

1. List of Stakeholders Contacted in the RSPO Certification Process	42
2. Assessment Program	43
3. Smallholders Data	44

Figure 1. Location Map of Kelompok Tani Karya Bersama

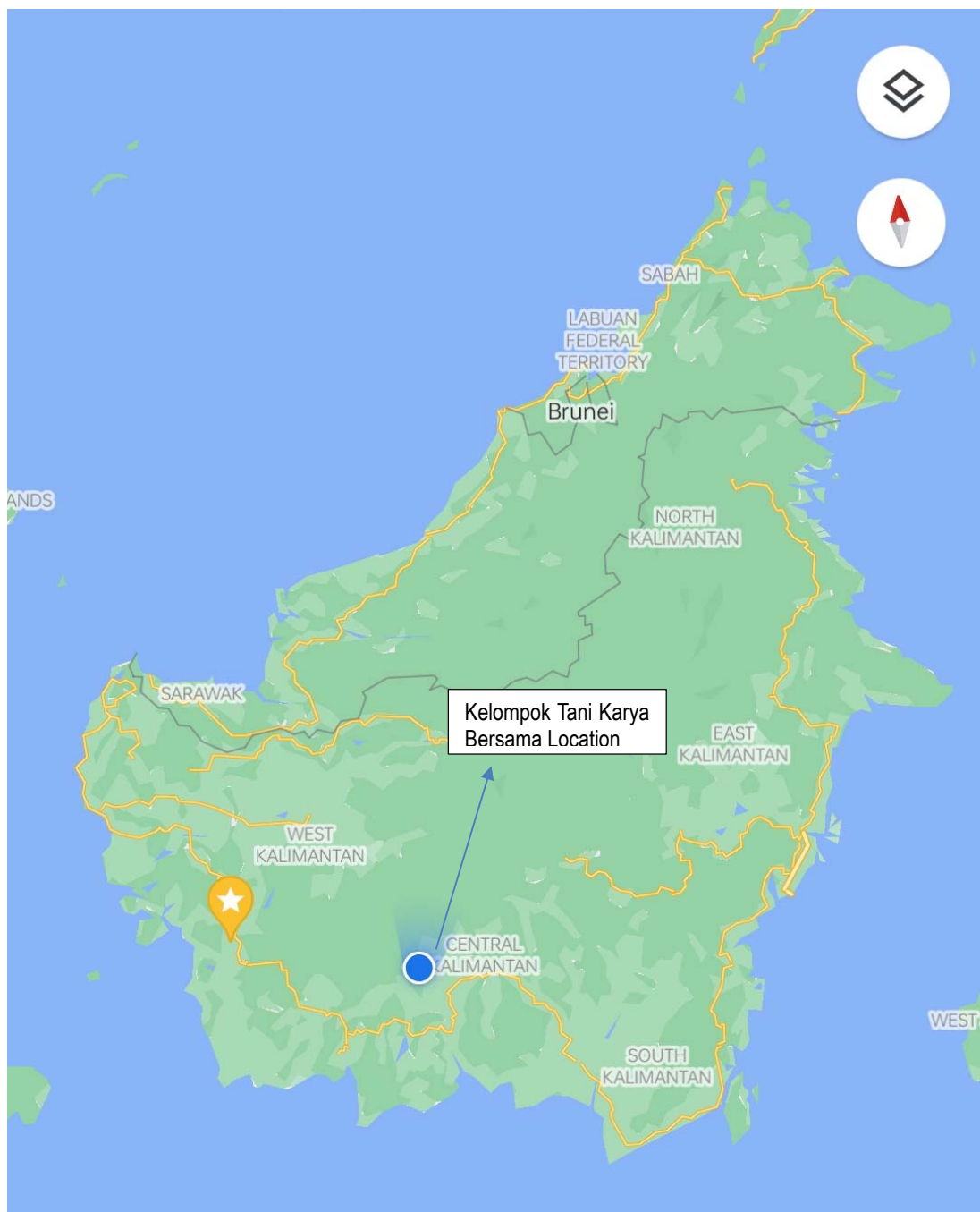
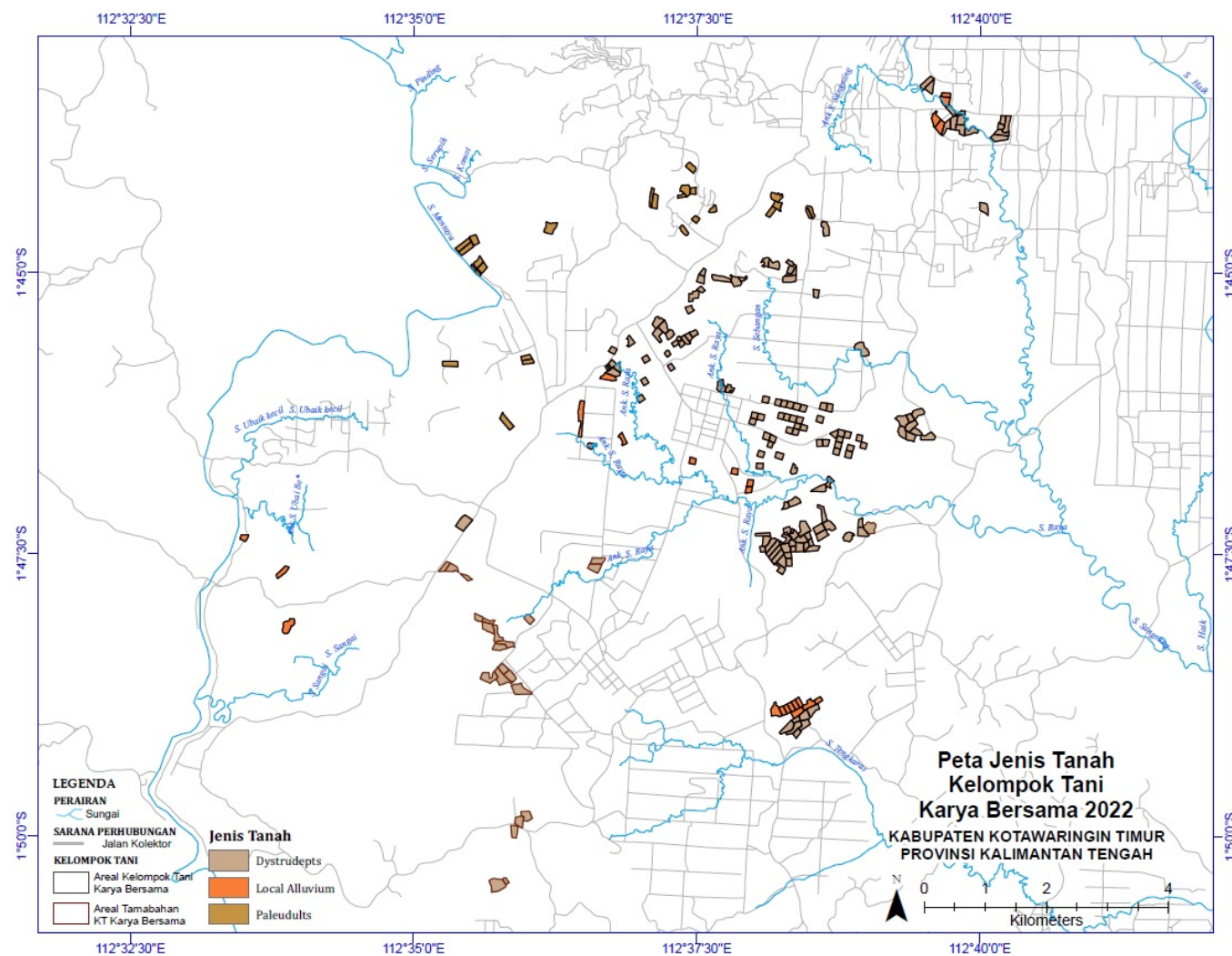


Figure 2. Operational Map of Kelompok Tani Karya Bersama



**Abbreviations Used**

APL	:	<i>Area Penggunaan Lain</i> (Non-Forested Area)
BGA	:	Bumitama Gunajaya Agro
BMP	:	Best Management Practices
CPO	:	Crude Palm Oil
CSPK	:	Certified Sustainable Palm Kernel
CSPO	:	Certified Sustainable Palm Oil
CSPKE	:	Certified Sustainable Palm Kernel Expeller
CSPKO	:	Certified Sustainable Palm Kernel Oil
FCL	:	Final Compensation Liability
FFB	:	Fresh Fruit Bunch
FPIC	:	Free, Prior and Informed Consent
GAP	:	Good Agriculture Practice
HCV	:	High Conservation Value
HCS	:	High Carbon Stock
HPK	:	Hutan Produksi Konversi (Conversion Forest Area)
ICS	:	Internal Control System
ID	:	Identity
IPM	:	Integrated Pest Management
ISH	:	Independent Smallholder
ISO	:	International Standard Organization
ISPO	:	<i>Indonesian Sustainable Palm Oil</i>
KB	:	Karya Bersama
KMB	:	Karya Makmur Bahagia
KTKB	:	Kelompok Tani Karya Bersama
LUCA	:	Land Use Change Analysis
OHS	:	Occupational Health and Safety
RSPO	:	Roundtable Sustainable Palm Oil
RTE	:	Rare, Threaten, and Endangered
SHM	:	<i>Sertifikat Hak Milik</i> (Land Owner Certificate)
SKT	:	<i>Surat Keterangan Tanah</i> (Land Certificate)
SOP	:	Standard Operational Procedure

1.0	SCOPE of the CERTIFICATION ASSESSMENT		
1.1	Assessment Standard Used	<ul style="list-style-type: none"><li>RSPO Certification Systems for Principles &amp; Criteria and RSPO Independent Smallholder Standard Endorsed by the RSPO Board of Governors on 12 November 2020</li><li>RSPO Independent Smallholder Standard, Indonesia National Interpretation for the Production of Sustainable Palm Oil 2020, endorsed by the RSPO Boar of Governors on 14 February 2022</li></ul>	
1.2	Organisation Information		
1.2.1	Organisation name listed in the certificate	Kelompok Tani Karya Bersama	
1.2.2	Contact person	Yoyok Kuswoyo	
1.2.3	Organisation address and site address	Jalan Rambutan RT07/RW04, Agung Mulya Village, Antang Kalang Sub District, Kotawaringin Timur District, Kalimantan Tengah Province, Indonesia	
1.2.4	Telephone	+6285245638888	
1.2.5	Fax	-	
1.2.6	E-mail	yoyokkuswoyo7878@gmail.com	
1.2.7	Web page address		
1.2.8	Management Representative who completed the application for certification	Yoyok Kuswoyo	
1.2.9	Registered as RSPO member	1-0306-20-000-00 – 31 October 2020	
1.3	Type of Assessment		
1.3.1	Scope of Assessment and Number of Management Unit	Kelompok Tani Karya Bersama with 76 members (323.78 ha). There were additional members (Extension Scope) of smallholders member from the previous assessment, which amounted to 70 farmers with an area of 277.90 ha.	
1.3.2	Type of certificate	Single	
1.4	Locations of Plantation		
1.4.1	Location of Certification Scope of Supply Base		
	Name of Smallholder Organisation	Location	Coordinate
			LatitudeLongitude
	Kelompok Tani Karya Bersama	Agung Mulya Village, Telaga Antang Sub District, Kotawaringin Timur District, Kalimantan Tengah Province, Indonesia	S 01° 46' 25.687"E 112° 37' 33.318"
1.5	Description of Area Statement		
1.5.1	Tenure		
	• State	- Ha	
	• Community	323.78 Ha	
1.5.2	Area Statement		
	• Total area	323.78 Ha	
	• Production area	323.78 Ha	
	• HCV*	12.15 Ha	

*Conservation on planted area.					
1.6	Planting Year and Cycles				
1.6.1	Age profile of planting year				
	Planting Year	Hectarage (Ha)			Total
		Kelompok Tani Karya Bersama			
	2004	6.00			6.00
	2007	1.00			1.00
	2008	40.27			40.27
	2010	159.32			159.32
	2012	2.50			2.50
	2013	17.77			17.77
	2014	3.78			3.78
	2015	49.94			49.94
	2017	33.86			33.86
	2018	9.34			9.34
	TOTAL	323.78			323.78
1.6.2	New Planting area after January 2010		- Ha		
1.6.3	Planting Cycle		1 <sup>st</sup> Cycle		
1.7	Description of Supply Base				
1.7.1	Description of Certification Scope of Supply Base				
	Name of Smallholder Organisation	Total Area (Ha)	Production Area (Ha)	FFB (tonnes/year)	Yield (tonnes/ha/year)
	Kelompok Tani Karya Bersama	277.90	277.90	6,614.93	23.80
	Production data period of July 2021 to June 2022 (12 months before assessment)				
1.8	Tonnage of Product				
1.8.1	Past Annual Claim Certified Product		Last Year Projected Certified Volume (MT)		Last Year Actual Certified Volume (25 August 2021 to June 2022) (MT)
	• FFB Production		4,613		4,101.64
	• CSPO Production		-		-
	• CSPKE Production		-		-
	• CSPKO Production		-		-
1.8.2	Product selling				
	Tonnage of selling product		Actual selling product for last year (25 August 2021 to June 2022) (MT)		
	• IS-CSPO sold as RSPO Credit		922		
	• IS-CSPKO sold as RSPO Credit		103		
	• IS-CSPKE sold as RSPO Credit		126		
	• FFB sold as RSPO Certified Product		-		
	• FFB sold under other scheme		-		
	• FFB sold as conventional		-		
1.8.3	Estimate Certified FFB Claim				
	Name of Smallholder Organisation	Total Area (Ha)	Production Area (Ha)	FFB (tonnes/year)	Yield (tonnes/ha/year)

	Kelompok Tani Karya Bersama	323.78	323.78	7,303.44	22.56		
	<i>*Projected FFB production for 12 months of certificate</i>						
1.8.4	Estimate Certified Palm Product Claim						
	FFB Processed (tonnes/year)	CPO		CSPKE		CSPKO	
		Out put (tonnes)	Extraction (%)	Out put (tonnes)	Extraction (%)	Out put (tonnes)	Extraction (%)
	-	-	-	-	-	-	-
	<i>*Extraction of CSPO, CSPKO and CSPKE from document "A seller Guide to RSPO Credits</i>						
1.9	Other Certifications						
	Others			-			



2.0	ASSESSMENT PROCESS
2.1	Assessment Team
ASA-1	<p>1. <b>Briyogi Shadiwa (Lead Auditor)</b>. Indonesian citizens. Associate Degree of Oil Palm Plantation, Bogor Agricultural University. He has work experience since 2009 in several private oil palm plantation companies in Indonesia as Assistant Agronomy and Agronomy Quality Control. The trainings that have been attended include: RSPO Lead Auditor Course by Checkmark, ISPO Auditor Training by LPP, Lead Auditor ISO 9001: 2015, RSPO Supply Chain Certification Training Course by Checkmark, Lead Auditor ISO 14001: 2015, SMK3 Awareness, OHSAS 18001 Awareness: 2007, SA 8000 Awareness, ISO 45001: 2018 Awareness and General OHS Expert Training. In this audit, he verified ICS, SCC, Legal, BMP and OHS aspects.</p> <p>2. <b>Erika Lucitawati (Auditor)</b>. Indonesian citizen. Bachelor of Engineering with major in Environmental Engineering. The trainings that have been attended include ISPO Lead Training, RSPO Lead Training, In House Training of ISO 19011: 2018, ISO 17021: 2015, ISO 17065: 2012, ISO 9001: 2015, ISO 14001: 2015, ISO 45001: 2018, and The Supervision of Occupational Health and Safety Training. During this assessment, she verified environmental, conservation, and worker welfare aspects.</p>
2.2	Assessment Methodology, Assessment Process and Locations of Assessment
2.2.1	Figure of person days to implement assessment
ASA-1	<p>Number of auditors : 2 auditors</p> <p>Number of days for ASA-1 at site : 4 days</p> <p>Number of working days for ASA-1 at site : 8 Working days</p>
2.2.2	Assessment Process
ASA-1	<p>The assessment was conducted by measuring the sufficiency of implementation with the consistency done by the Kelompok Tani Karya Bersama to the requirements of RSPO Independent Smallholder Standard, Indonesia National Interpretation for the Production of Sustainable Palm Oil 2020, endorsed by the RSPO Boar of Governors on 14 February 2022 and RSPO Certification Systems for Principles &amp; Criteria and RSPO Independent Smallholder Standard Endorsed by the RSPO Board of Governors on 12 November 2020.</p> <p>This assessment conducted for previous scope at initial assessment of 70 smallholders with 277.90 ha area, and there is extension scope of additional smallholders of 6 smallholders with 45.88 ha area. Total current scope numbered 76 smallholders in 323.78 ha area.</p> <p>The assessment was conducted in three methods: (1) document review, aiming to observe the sufficiency of types or substances from required documents; (2) <i>interview</i>, aiming to obtain more detailed information and cross check the information; and (3) field observation, aiming to observe directly the sufficiency of implementation on site.</p> <p>Some opportunities for improvement of the results ASA-1 delivered by the MUTU auditor to the management unit and the results are the subject will be verified at the next assessment phase (ASA-2).</p> <p>Improvement of findings from main assessment findings were observed by auditors at this ASA-1 assessment. All information obtained was recorded in Check List of PT Mutuagung Lestari (MUTU) and part of ASA-1.</p> <p>Team of auditor started their trip from Jakarta to Sampit and continued to site. Opening Meeting in the Meeting Room of KTKB. Opening meeting was attended by head of organization, ICS and other related personnel.</p> <p>Public Stakeholder Notification was made on 25 July 2022. There is no written negative feedback receive. Stakeholder consultation involved external stakeholders.</p> <p>Meetings were held with stakeholders to seek their views on the performance of the company with respect to the RSPO requirements and aspects where they considered that improvements could be made. At the start of each meeting, the interviewer explained the purpose of the audit followed by an evaluation of the relationship between the stakeholder and the company before discussions proceeded. The interviewer recorded comments made by</p>

	<p>stakeholders and these have been incorporated into the assessment findings. The comments made by external stakeholders were also taken into account in the assessment</p> <p>Structured worker and members interview with male and female workers were held in private at the workplace. Fieldworkers were interviewed informally in small groups in the field. In addition, the wives of workers and staff were interviewed in informal meetings at their housing. Company officials were not present at any of the internal or external stakeholder interviews. A list of Stakeholders contacted is included as Appendix 1.</p> <p>The assessment program please find Appendix 2</p>
<b>2.2.3</b>	<b>Locations of Assessment</b>
<b>ASA-1</b>	<p>This assessment was conducted with scope of certification 323.78 Ha, and 76 members. During this assessment the association considered high risk, its due to and additional new members. Sampling method for ASA-1: <math>\sqrt{76}^* (2)</math>: 17 members.</p> <p>The sampling location consider the issue arose from the review documents, village distribution and stakeholder's consultation that are fundamental and crucial. The smallholders and locations visited by auditor among other:</p> <p><b>Existing Member</b></p> <ul style="list-style-type: none"> <li>• 10_NM with initial KIS. Observation and interview related to KTKB commitment, BMP aspect, FPIC, land title, OHS and boundary pole.</li> <li>• 16_NM with initial SUR. Observation and interview related to KTKB commitment, BMP aspect, FPIC, land title, OHS and boundary pole.</li> <li>• 32_NM with initial RUW. Observation and interview related to KTKB commitment, BMP aspect, FPIC, land title, OHS and boundary pole.</li> <li>• 34_NM with initial SIS. Observation and interview related to KTKB commitment, BMP aspect, FPIC, land title, OHS and boundary pole.</li> <li>• 30_NM with initial KAR. Observation and interview related to KTKB commitment, BMP aspect, FPIC, land title, OHS and boundary pole.</li> <li>• 115_KB with initial MAR. Observation and interview related to KTKB commitment, BMP aspect, FPIC, land title, OHS and boundary pole.</li> <li>• 06_NM with initial KUS. Observation and interview related to KTKB commitment, BMP aspect, FPIC, land title, OHS and boundary pole.</li> <li>• 24_NM with initial SYA. Observation and interview related to KTKB commitment, BMP aspect, FPIC, land title, OHS and boundary pole.</li> <li>• 26_NM with initial SAP. Observation and interview related to KTKB commitment, BMP aspect, FPIC, land title, OHS and boundary pole.</li> <li>• 23_NM with initial WIY. Observation and interview related to KTKB commitment, BMP aspect, FPIC, land title, OHS and boundary pole.</li> <li>• 13_NM with initial SUH. Observation and interview related to KTKB commitment, BMP aspect, FPIC, land title, OHS and boundary pole.</li> <li>• Central Store of Ngudi Makmur. Observation related to OHS and environment aspect.</li> </ul> <p><b>New Member</b></p> <ul style="list-style-type: none"> <li>• 146_KB with initial SSW (HCV area). Observation HCV management aspect.</li> <li>• 163_KB with initial SLM. Observation and interview related to KTKB commitment, BMP aspect, FPIC, land title, OHS and boundary pole.</li> <li>• 162_KB with initial KRT. Observation and interview related to KTKB commitment, BMP aspect, FPIC, land title, OHS and boundary pole.</li> </ul>

	<ul style="list-style-type: none"> <li>• 157_KB with initial RNW. Observation and interview related to KTKB commitment, BMP aspect, FPIC, land title, OHS and boundary pole.</li> <li>• 155_KB with initial SYT. Observation and interview related to KTKB commitment, BMP aspect, FPIC, land title, OHS and boundary pole.</li> <li>• 160_KB with initial MRL. Observation and interview related to KTKB commitment, BMP aspect, FPIC, land title, OHS and boundary pole.</li> <li>• Central Store of Karya Bersama. Observation related to OHS and environment aspect.</li> </ul>
2.3	Stakeholder Consultation and Stakeholders Contacted
2.3.1	Summary of stakeholder consultation process.
ASA-1	<p>Consultation of stakeholders for Koperasi Kelompok Tani Karya Bersama was held by:</p> <ul style="list-style-type: none"> <li>• Public Notification on MUTU website.</li> <li>• Public consultation meeting with government institution 25 July 2022</li> <li>• Public consultation meeting with village representatives on 26 July 2022</li> <li>• Consultation with NGO (WWF, Sawit Watch &amp; Walhi) via email on 11 July 2022</li> </ul> <p>Numbers of input from stakeholders were clarified by Kelompok Tani Karya Bersama as a part of this report.</p>
2.3.2	Stakeholder contacted
	Please find appendix 1
2.4	Determining Next Assessment
	The next visit ( <i>ASA-2</i> ) will be conducted eight (8) months to twelve (12) months after date of annual license.

### 3.0 ASSESSMENT FINDINGS

#### 3.1 Summary of Assessment Report of the RSPO Certification

MUTUAGUNG LESTARI has conducted an assessment of Kelompok Tani Karya Bersama operation consisting of seventy-six (76) smallholders.

During the assessment, there were two (2) Nonconformities were assigned against Major Compliance and one (1) opportunity(s) for improvement were identified.

Further explanation of the non-conformities raised and corrective actions taken by the company are provided in section 3.5. KTKB has already prepared and implemented the corrective action(s) that had been reviewed and accepted by Auditor(s) in form of documentation evidence(s) e.g. (document record/photographic/etc.). Those corrective action(s) taken that consist of two (2) Major/ Critical non-conformity(s) and had been closed out shall be verified during next assessment.

MUTUAGUNG LESTARI found that Kelompok Tani Karya Bersama complied with the requirements of RSPO Independent Smallholder Standard, Indonesia National Interpretation for the Production of Sustainable Palm Oil 2020, endorsed by the RSPO Board of Governors on 14 February 2022 and RSPO Certification Systems for Principles & Criteria and RSPO Independent Smallholder Standard Endorsed by the RSPO Board of Governors on 12 November 2020.

Therefore, MUTUAGUNG LESTARI Recommends RSPO Certification of compliance is continued.

#### 3.1.1 The system requirements for Group Formation and Management (including the Internal Control System) that are only applicable to the group manager

Ref Std.	VERIFICATION RESULT of MUTU-Certification	
<b>A – ICS: Group Entity and Group Management Requirements</b>		
<b>A.1 The Group demonstrates that they are legally formed</b>		
<b>A.1.1</b> <b>Eligibility</b> The Farmer Group has determined its management structure in the form of Decree Letter of Member meeting with number 011/09/KB/2018 dated 5 September 2018. In this stipulation, Yoyok Kuswoyo is appointed as the Group Manager. In addition to the determination of the manager of the Farmer Group, the document also stipulates that all Farmer Group management are group managers in controlling Farmer Groups. One of the tasks is to carry out internal audit activities and also monitor cultivation aspects in the field.  <b>MS A</b> Same as Eligibility  <b>MS B</b> Same as Eligibility		
<b>A.1.2</b> <b>Eligibility</b> The certificate holder has certificate of establishment of the KTKB, certificate number 02, dated 10 March 2018 by Joni, SH, MH, Sp.N and Decree of Notary for on behalf of Mr. Suharno (Chairman of the Farmer Group), Mr. Sukari (Secretary) and Mr. Sutrisno (Treasurer). The above document is kept at the KTKB office by the Group Manager.		

Based on latest assessment, there has been no change related to the legality owned.

**MS A**

Same as Eligibility

**MS B**

Same as Eligibility

**A.1.3**

**Eligibility**

The Farmer Group has a policy related to the requirements to become a member in the recruitment procedure with number Karya Bersama-SOP-ORG-004 dated 20 December 2019. The document describes the requirements for become a member, including:

- New member shall complete the registration form (name, address, ID Card number, Coordinate, Area, Year of Planted, soil type, oil palm seed, manuring record, pest control, productivity, harvesting rotation, land sale history, land title history, land legality history.
- The group manager with the ICS team and field instructor (from BGA) conducted a land survey to the prospective new members, to ensure the data are suitable with the field conditions.
- The oil palm plantation is in the other land area status.
- New member shall commit not to new development on the peat area after year of 2017.
- New members strive to comply with the rules, procedures and policy of KTKB and also RSPO principle and Criteria.

**MS A**

Same as Eligibility

**MS B**

Same as Eligibility

**A.1.4**

**Eligibility**

The Farmer Group shows proof of ratification of the requirements for farmer members, for example in the recording of the farmer's statement on behalf of Dasimin which was signed by him on 18 June 2020. The recording contains a statement of the commitment of the farmer before becoming a member, for example:

- Ensure that there is no forced labor
- Participate in required training and actively participate in farmer groups.
- Respect workers' rights
- Protect conservation areas
- No burning
- Make every effort to apply best management practices for oil palm plantations.
- Resolve all land disputes.

**MS A**

Based on the results of the document review at the Farmer Group office. the auditor found on a sample basis that 14 members had signed a commitment to comply with the RSPO principles as well as the requirements of other members, especially 6 new members. This was also confirmed by the results of field interviews, where the farmers admitted that they had signed all the requirements.

**MS B**

Based on the results of interviews with 14 samples of farmers in the field, farmers who are members of Farmer Groups are able to demonstrate the requirements to become members of Farmer Groups, starting from the need for land ownership documents to commitment to implementing the RSPO principles.

Status: Comply

**A.2 The Group Manager is responsible for managing the Group for certification**

**A.2.1**

**Eligibility**

The Farmer Group has a work program that is listed in the "*Rencana Kerja Pengurus Kelompok Tani Karya Bersama*" for the period 2022 - 2024 which was approved by the manager on 5 November 2021. The document has included the implementation time, for example:

- Agronomy aspect training (once a year)
- ICS training (once a year)
- Internal audit activities (twice a year)
- Hazardous Waste management training (once a year)
- Management meeting (every month)
- RSPO socialization (once a year)

**MS A**

The Farmer Group also displays documentation of the implementation of work programs carried out in 2021, such as:

- Management review meeting on June 2021.
- Integrated pest control such as turnera planting and pest and disease census on 29 January 2021.
- Provision of OHS facilities and infrastructure on 29 August 2021.
- Monitoring of HCV area (buffer zone) on January 2021.

Based on interviews with group members, it is known that they understand about ICS, such as SOP and farmer group policies.

**A.2.2**
**Eligibility**

Based on interviews with group managers, it is known that group managers have an understanding of the RSPO standard for Independent Smallholders. Group managers have received training related to RSPO independent smallholders organized by BGA Group on 8 February 2022.

The ICS organization consists of group managers, secretaries, treasure, FFB Selling Unit, IPM Unit, ICS Unit, Registration Unit and Admin with duties and responsibilities such as:

- The treasurer handles all group financial administration activities, including the distribution and management of funds.
- Group Manager coordinates, organizes and is fully responsible for all group activities.
- The internal control team will look for evidence and conformity with RSPO criteria and indicators, elements of OHSMS as well as compliance with manuals, procedures, work instructions and records.
- Admin staff assists in the fulfillment of administration for the continuity of farmer group operations.

Based on interviews with ICS members, it is known that they are able to explain the responsibilities for each division and are competent in managing the group.

**MS A**

Based on interviews with group managers, it is known that managers understand about RSPO certification and certification requirements. The group manager also easily manages members during audit activities and provides the necessary information for certification.

**A.2.3**
**Eligibility**

The training program developed by the Farmer Group management for members is planned annually which includes socialization of operational procedures, RSPO, HCV, OHS and worker aspects, integrated pest control, including the following:

- Hazardous and toxic waste management training on 20 February 2022.
- Socialization of the ban on the use of fire in land clearing, and waste management on 20 January 2022
- HCV management training on January 10, 2022.
- Socialization of employment, Minimum Wage, Discrimination, Exploitation, Forced Labor and Code of Ethics on 10 February 2022.

Based on interviews with members, it was stated that they had received training from Farmer Groups or external parties.

**MS A**

The training program for Farmer Group members is planned to be implemented every year in stages for all Farmer Group members. In addition, the Farmer Group also shows documents for the realization of the training, including:

- Agronomy aspect training (once a year)
- ICS training (once a year)
- Internal audit activities (twice a year)
- Hazardous Waste management training (once a year)

Based on interviews with the management and group members, it is known that group members have a fairly good understanding of the RSPO and the topics in the training and the training is carried out by competent speakers.

**MS B**

The Farmer Group has provided training in stages to all group members related to Good Agricultural Practices (GAP), such as:

- Harvest training, workers' rights and conditions.
- Integrated fertilization and pest control.
- Weed control, pesticides and soil and water conservation.
- Emergency first aid and basic fire.

The training was provided partnership by a companion team from BGA Group (RSPO certified member) who are competent in providing training. The training materials and training realization documents have been well documented.

Based on interviews with Group members, it is known that smallholder have a fairly good awareness of the RSPO, best management practices, HCV management, and social welfare is quite good. Members can also demonstrate their understanding of some aspects of the RSPO, for example on implementing OHS in the field or best management practices.

	Status: Comply	
--	----------------	--

**B – ICS: Policies and Management**
**B.1 The group Internal Control System contains documented policies and procedures for operational management.**
**B.1.1**
**Eligibility**

Farmer Groups have policies or procedures related to member expulsion as well as providing sanctions to members in the SOP "Seleksi dan Penerimaan Anggota Baru Kelompok Tani Karya Bersama" which was issued on 20 December 2019. The procedure informs several things, for example:

- Group members can declare their resignation from the group if they no longer agree with the rules determined by the group.
- The group manager, which is approved by other group members, can reprimand and then decide on the revocation of membership if the member is proven to have violated the rules, procedures and policies that have been set.
- The group manager, which is approved by other group members, may reprimand and then decide on the revocation of membership if the member is proven to have committed an action that is detrimental to the group as a whole.

Farmer Groups also have policies or procedures related to periodic inspections (internal audits) in the SOP Internal Audit (Karya Bersama-SOP-ORG-003). The procedure informs internal audit activities, for example:

- Internal audit is conducted once a year for each scope that includes plantation operational activities.
- The results of the internal audit will be discussed in regular meetings of all group members led by the group manager.
- Internal audit records (audit schedule, checklist and audit report) will be stored and maintained by admin staff.

**MS A & MS B**

Farmer groups have not been able to show evidence at the time of the assessment activity that an annual internal audit has been carried out on all members of the farmer group. NCR No. 2022.01

**B1.2**
**Eligibility, MS A and MS B**

Regarding member information, it is contained in the verification and assessment form for new members which has been signed by



<p>each member. The document contains information related to the legality of land ownership, land area, year of planting, signed smallholder declaration (sustainability commitment), ownership status to location assessment and completeness of registration files.</p> <p>In addition, the certificate holder also manages the production data for each member which is stored in the cooperation office. The production data contains the results of production and sales made by each member.</p>		
	Status: Nonconformity number 2022.01 with Major Category	
<b>C – ICS: Group business planning</b>		
<b>C.1 The group has a group Business Plan prepared with the participation and contributions of group members.</b>		
<p><b>C.1.1</b> <b>Eligibility</b> The Farmer Group has a long-term plan made with a period of 2022 which was approved by the Farmer Group manager on 2021 by all Farmer Group management which was made based on a management review meeting that included production estimates from farmer groups, such as production plan for 2022, where production is estimated to reach 7,000 tons with a yield of 22 tons/ha.</p> <p><b>MS A</b> The Farmer Group business plan is carried out in accordance with the results of the planning where in its implementation the detailed annual and monthly activity plans are then reviewed annually by all members of the Farmer Group in parallel through representatives from each group which are documented in the last management review activity carried out on 10 June 2022.</p> <p><b>MS B</b> The Farmer Group already has a good document storage and recording system in the form of hard files and soft files. During the audit, it does not take long to find the documents needed as audit evidence. All requested documents can be shown properly and are traceable, including FFB production records.</p> <p>The results of interviews with members of the Farmer Group stated that they had really felt the difference since joining the Farmer Group, for example increasing knowledge of oil palm management and assistance for needs in oil palm management such as fertilizer and PPE.</p> <p>The organization is also able to show evidence of implementation related to transparency and good financial management, for example by conducting a management review (carried out on November 2021) related to :</p> <ul style="list-style-type: none"> <li>• Production achievements</li> <li>• Sales of certified products</li> <li>• Plan to add farmer members</li> <li>• Evaluation of training for all farmer members</li> </ul>		
	Status: Comply	
<b>C.2 The ICS of the group is integrated with the Group's Management Plan.</b>		
<p><b>C.2.1</b> <b>Eligibility</b> The Farmer Group has a long-term plan made with a period of which was approved by the group manager on 5 November 2021 by all group management which was made based on a management review meeting that included production estimates from farmer groups.</p> <p>The Farmer Group also shows the 2022-2024 work program and training plan documents, such as:</p> <ul style="list-style-type: none"> <li>• Agronomy aspect training (once a year)</li> <li>• ICS training (once a year)</li> <li>• Internal audit activities (twice a year)</li> <li>• Hazardous waste management training (once a year)</li> </ul> <p><b>MS A</b> The organization is also able to show evidence of implementation related to the detailed annual and monthly activity plans, for example</p>		



by conducting a management review (carried out on November 2021) related to : <ul style="list-style-type: none"> <li>• Production achievements</li> <li>• Sales of certified products</li> <li>• Plan to add farmer members</li> <li>• Evaluation of training for all farmer members</li> </ul>		
<b>MS B</b> Based on field visits and interviews with members of the group members, it is known that smallholder have a fairly good awareness of the RSPO, best management practices, HCV management, and social welfare is quite good. Members can also demonstrate their understanding of some aspects of the RSPO, for example on implementing OHS in the field or best management practices.		
	Status: Comply	
<b>D – ICS: Group Trading System for Certified Volumes</b>		
<b>D.1 The group has a procedure and system in place for the tracking of FFB.</b>		
<b>D.1.1</b> <b>Eligibility, MS A and MS B</b> The Farmer Group has procedures related to monitoring and controlling FFB production and sales records in document “ <i>Laporan Panen Petani Tahun 2022</i> ”: <ul style="list-style-type: none"> <li>• Record of each farmer's harvest according to the working group.</li> <li>• Contains information on the area of harvesting activities and the total harvest on each activity date.</li> </ul> <p>Certificate holders are encouraged to be able to develop written procedures to inspect sales of FFB periodically to avoid recording errors by members. Because there are indications of writing errors in total production so there is a production (yield) that exceeds 30 tons/ha/year for some member plots. OFI</p> <p>The recording procedure explains that the Farmer Group represented by the FFB registration section will only document sales records from members of the <i>Kelompok Tani Karya Bersama</i> ICS. The person in charge periodically makes a report on the record of sales of FFB sales to the ICS Manager and displays it in the information available at the Farmer Group office.</p> <p>Currently, based on verification, sales are made on credit. farmer groups do not physically sell certified products.</p>		
	Status: Comply	
<b>D.2 The group documents and implements a system for the tracking of FFB.</b>		
<b>D.2.1</b> <b>Eligibility, MS A and MS B</b> The farmers group has managed records of production and sales of FFB produced by all its member farmers in recording the achievement of performance targets in 2021. The record contains information on farmer production in 2021/2022. For example, the Farmer Group shows a record annual production for the period 2021/2022 is 7,435 ton. In addition to total production, there are also production records for each farmer's land.		
Based on interviews with all sample members, they have learned to always record and ensure the shipment/sale of FFB is certified FFB originating from land that has been registered with the farmer group.		
	Status: Comply	
<b>D.3 The group has a procedure and system for premium distribution.</b>		
<b>D.3.1</b> <b>Eligibility</b> The unit of certification shows a group membership agreement signed by the Chair of each farmers group; and the Certification Group Manager on 8 June 2021. Some of the agreements in this document include: <ol style="list-style-type: none"> <li>1. The Kelompok Tani Karya Bersama will conduct sales using the Book &amp; Claim system through the RSPO Palm Trace. However, it is possible to sell certified FFB directly to Mill if there is an opportunity.</li> <li>2. In conducting sales with the Book &amp; Claim system, the group will make sales on a regular basis, taking into account the best</li> </ol>		

- prices and offers, while taking into account the stock and actual sales per year.
3. The premium/added value obtained from the sale of certified products, both by Book & Claim and physical sales, will be managed by the Group, with the following distribution mechanism:
    - 50% of sales proceeds will be managed as group cash and used for group management; and
    - The other 50% will be distributed to group members, according to the product yield of each land.
  4. Distribution of premiums to group members, done once every 6 months. If within that time period the Group does not make sales with the consideration that there is no good price and offer, then this will be conveyed to members and premiums distributed in the next period.

**MS A**

Based on the review of the Minutes of the Meeting of the Management and Members of the Kelompok Tani Karya Bersama on June 8, 2022 which resulted in the following decisions:

- The proceeds from claims for RSPO certification are not distributed to members first.
- The money from claiming RSPO certification is temporarily kept by the group manager.

The minutes of the event are accompanied by a list of attendance attended by the management and group members along with documentation of activities.

**MS B**

Same as MS A

	Status: Comply	
--	----------------	--

3.2.2 The Principle Criteria and Indicators that are applicable to both smallholders (as individual group members) and group managers

Ref Std.	VERIFICATION RESULT of MUTU-Certification	
<b>PRINCIPLE 1: OPTIMISE PRODUCTIVITY, EFFICIENCY, POSITIVE IMPACTS AND RESILIENCE</b>		
<b>1.1</b>		
<b>Smallholders establish a legal entity which has organisational capacity to comply with the RSPO Independent Smallholder Standard.</b>		
<p><b>Eligibility, MS A and MS B</b></p> <p>The Farmer Group has kept all complete data for each member available in the Farmer Group office. Document the member data. The document contains information related to the legality of land ownership, land area, year of planting, signed smallholder declaration (sustainability commitment), ownership status to location assessment and completeness of registration files. All documents are signed by each member without any coercion</p> <p>Group manager have an Internal Control System which informed on SOP Internal Audit (Karya Bersama-SOP-ORG-003) which was set on 20 December 2019. The document informs about requirements that must be completed by prospective members, including the fulfillment of the legality of land ownership.</p> <p>The organization is also able to show evidence of implementation related to the detailed annual and monthly activity plans, for example by conducting a management review (carried out on November 2021) related to :</p> <ul style="list-style-type: none"> <li>• Production achievements</li> <li>• Sales of certified products</li> <li>• Plan to add farmer members</li> <li>• Evaluation of training for all farmer members</li> </ul> <p>Based on the latest assessment, currently in the 2022 period there are 76 members.</p> <p>Based on the results of the document review at the Farmer Group office. the auditor found on a sample basis that 14 members had signed a declaration commitment to comply with the RSPO principles as well as the requirements of other members. For example, farmers with the initials KT signed the commitments and terms of Farmer Group members on 2 January 2022. This was also confirmed by the results of field interviews, where the farmers admitted that they had signed all the requirements.</p> <p>The Farmer Group has also conducted training which was conducted on 8 February 2022. to farmers (including 6 new members) and ICS members such as Kiswanto. The training carried out was related to the best aspects of oil palm cultivation, waste management, OHS aspects, employment, to the prohibition of employing child under 18 ages. One of the trainings also discussed aspects of financial management such as selling FFB to farmers, starting from the separation of certified FFB, recording sales, to reporting to the head of the farmer group. Farmers can also discuss with the Farmer Group management regarding the purchase of fertilizers and pesticide materials.</p>		
	Status: Comply	
<b>1.2</b>		
<b>Smallholders have the capacity to effectively manage their farm.</b>		
<p><b>Eligibility, MS A and MS B</b></p> <p>The members/farmers have attended the trainings provided by the organization. One of the trainings carried out was related to recording production and also selling FFB. for example, farmers show auditors the recorded production records contained in the "Laporan Kegiatan Kebun Petani". The recording contains information such as monthly FFB production, pesticide use, and fertilizer use. The records submit from members to cooperation every month.</p> <p>Some training recordings have also been shown, for example:</p> <ul style="list-style-type: none"> <li>• Hazardous and toxic waste management training on 20 February 2022.</li> <li>• Socialization of the ban on the use of fire in land clearing, waste and waste management on 20 January 2022</li> <li>• HCV management training on January 10, 2022.</li> </ul>		

- Socialization of employment, Minimum Wage, Discrimination, Exploitation, Forced Labor and Code of Ethics on 10 February 2022.

The training record contains information on the attendance list of members, documentation and also training materials in the form of presentations.

Based on the results of interviews with sample smallholder members in the field, members have recordings of FFB sales which they routinely inform to cooperation every months.

In line with the explanation in the indicator 1.1 MS B, one of the trainings attended (training records on 8 February 2022) by the farmers also discussed aspects of financial management such as selling FFB to farmers, starting from the separation of certified FFB, recording sales, to reporting to the head of the farmer group. Farmers can also discuss with the group management regarding the purchase of fertilizers and pesticide materials.

Status: Comply

### 1.3

#### Smallholders implement good agricultural practices (GAP) on their farms.

##### Eligibility

The Farmer Group shows the SOP for member approval on SOP "*Seleksi dan Penerimaan Anggota Baru Kelompok Tani Karya Bersama*" which was issued on 20 December 2019 which includes the obligation to participate in RSPO certification which is stated in the farmer statement document. The smallholder statement document, among others, states the farmers' willingness to use the best management practices for oil palm which has been signed by all smallholders, such as the one signed by the smallholder with the initial KTI on 2 January 2022.

##### MS A

The Farmer Group has provided training to all group members regarding Good Agricultural Practices (GAP), such as:

- Hazardous and toxic waste management training on 20 February 2022.
- Socialization of the ban on the use of fire in land clearing, waste and waste management on 20 January 2022
- HCV management training on January 10, 2022.
- Socialization of employment, Minimum Wage, Discrimination, Exploitation, Forced Labor and Code of Ethics on 10 February 2022.
- Agronomy, OSH and RSPO Introduction Training on 8 February 2022.

The training was held on 8 February, 2022, which was provided by a competent companion team from BGA Group. The training materials and training realization documents have been well documented. Based on the results of interviews with a sample of farmer members, information was obtained that all respondents could demonstrate all their knowledge related to the results of the training and had been applied to their respective fields. The results of the interviews also showed that they felt a significant positive impact with evidence of an increase in FFB production after implementing the GAP suggested by the Farmer Group.

##### MS B

The results of field visits show that farmers have implemented GAP practices well and sustainably, such as not spraying river borders, not clearing land by burning, frond accumulation techniques and maintaining soil moisture properly and so on. Farmers also keep records related to FFB production, use of fertilizers and pesticides as well as other maintenance activities dalam notebooks provided by farmer groups.

These activities (SOP Implementation) are also monitored by the Farmer Group management, such as the recording of FFB production contained in the monthly farmer's activity report which is recorded by the land owner and its implementation is monitored by the Farmer Group extension officer, for example the recording of one farmer in January 2022, namely Yayuk Yuliana with amount 1.2 ton.

Status: Comply

## PRINCIPLE 2: ENSURE LEGALITY, RESPECT FOR LAND RIGHTS AND COMMUNITY WELLBEING

### 2.1

#### Smallholders have legal or customary rights to use the land in accordance with national and local laws and customary

practices.

#### Eligibility, MS A and MS B

The organization has managed legality data owned by each member, including the legality of land owned by members (especially 19 sample of members), for example:

No	Members Name	Land Certificate
1	Katini	SHM No. 00843 Year 2020
2	Siswono	No. 00838
3	Suyatno	No. 00835
4	Rini Wahyuni	Registered on 25 January 2013
5	Marlan	No. 00300

Based on the results of the verification of the land ownership documents above, all land certificates are in accordance with the names of farmer members registered in the member information data.

In addition to information related to the legality of land ownership, farmers also have clear boundaries in their respective areas. Auditor also made field observation to sample smallholder members in the field. Based on field observation, it is clear that the boundaries of the member's land area are in form of ditch and pile of palm oil fronds/trunks.

Status: Comply

#### 2.2

**Smallholders have not acquired lands from indigenous peoples, local communities or other users without their free, prior and informed consent (FPIC), based on a simplified FPIC approach.**

#### Eligibility, MS A and MS B

There are no customary rights and traditional rights on the land of Farmer Group members, all plots are areas with individual ownership rights. Members have a land tenure statement which also provides information about land maps, coordinates and others. The evidence of land ownership such as a land certificate has been signed by the village head. Example of land ownership:

No.	Smallholder Name	Location	Legal Document type	Number
1	Siswono	Beringin Agung Village	SHM	No. 00838
2	Suyatno	Beringin Agung Village	SHM	No. 00835
3	Rini Wahyuni	Beringin Agung Village	SPT ( <i>Surat Pernyataan Tanah</i> )	Registered on 25 January 2013
4	Marlan	Tumbang Sangai Village	SHM	No. 00300

Results of interview with group manager, Agricultural Agency of Kotawaringin Timur and Village Head of Agung Mulya Village, members of group and heads of surrounding village, obtained information that There is no information on land disputes on land owned by farmers, all land owned is owned by the farmer's family which was obtained legally without any issues of discrimination or against the law. Result of interview with members also showed that land ownership process through buying has been through process of FPIC.

Status: Comply

#### 2.3

**The right to use the land is not disputed by indigenous peoples, local communities or other users.**

#### Eligibility, MS A and MS B

Result of document verification and interview with Group Manager and its members, it was found that all members had signed and acknowledged membership requirements. Before joining Farmer Group, all members need to complete the requirements as prospective members, including photocopy of ID card, evidence of land ownership, family identity card, statement of commitment to RSPO certification as referred to in attachment 2, and others. The commitment and statement of certification members are as follows:

- Acceptance of prospective new members at least fulfills the requirement that the oil palm plantation is in the APL (*Area Penggunaan Lain*) status for cultivation.
- Preference will be given to prospective new members who already have SHM (*Sertifikat Hak Milik*) level legality.
- The group manager is committed not to accept new members with new plantings after 2017 in peat areas.

Results of field observations and interview group manager, Agricultural Agency, members and head of surrounding village, it is known that there are no land disputes on the land of group member.

During audit, audit team visited sample of group members' plots. It was found that each plot had evidence of land certificates from head of village and certificates of ownership. Result of field observation, it is known that all boundaries are clearly visible in the field. Boundaries are in the form of woody sticks, boundary stakes, etc. It is also known that members of group have been operating on their respective lands.

Results of interview with group manager and member of group, it is known that boundaries check of member's area is carried out routinely along with operational activities to ensure that no area boundaries are violated. Result of field observation and interview with group manager, Agricultural Agency, group members and head of surrounding village of Agung Mulya, it is known that there are no land disputes on the land of group member.

Status: Comply

**2.4**  
**Smallholder plots are located outside of areas classified as national parks or protected areas, as defined by national, regional or local law or as specified in National Interpretations.**

**Eligibility**

Results of document verification and comparison with land distribution maps with forest area maps, it is known that there are several plots of land for KTKB members with *HPK* status. While most of the others are *APL*. As explained in Presidential Regulation Number 88 of 2017 concerning Settlement of Land Tenure in Forest Areas (*PPTKH*), it is known that the Government will soon complete and provide legal protection for the rights of communities who control/use land parcels in forest areas. Communities who control land in forest areas will be given ownership rights, if they meet the criteria, namely 1. The land has been used properly, 2. The land parcel is not the object of a lawsuit/dispute, 3. There is recognition by customs or village heads with witnesses who can be trusted.

All KTKB members already have land ownership certificates in the form of *SKT*, *SPT* or *SHM* so it can be concluded that they already have the point 3 element of the above statement.

MS A

Same with Eligibility

MS B

Same with Eligibility.

Status: Comply

**2.5**  
**For new plantings, smallholders do not clear or acquire any land without obtaining the free, prior and informed consent (FPIC), of indigenous people and/ or local communities and/ or other users, based on a simplified FPIC approach.**

**Do any smallholders within the group have plans for new plantings of oil palm? If none, SKIP**

**Eligibility**

Result of document verification as well as interview with KTKB and its members, there is no plan for new planting of oil palm. In accordance with the distribution of planting years, it is known that oil palm planting is in the period 2004 – 2019. Result of document verification and interview with KTKB and its members, it was found that all members had signed and acknowledged membership requirements. Before joining KTKB, all members need to complete the requirements as prospective members, including photocopy of ID card, evidence of land ownership, family identity card, statement of commitment to RSPO certification as referred to in attachment 2, and others. The commitment and statement of certification members are as follows:

- Not clearing or acquiring land from indigenous peoples, local communities, or other users without their free, prior and informed consent (FPIC), based on a simplified FPIC approach
- No new planting or no expansion of existing farms in primary forests, HCV areas, HCS forests, in riparian areas, or on steep slopes (more than 25 degrees or as in National Interpretation)
- Protect HCVs and HCS forests through the precautionary practices approach
- No new planting on peat and replanting on peat only in areas with low risk of flooding and saline intrusion

KTKB has been able to show statement of commitment of its members. Several examples are shown below:



- Letter of Statement of Commitment of Member on behalf of KRD dated 18 June 2020.
- Letter of Statement of Commitment of Member on behalf of STM (initial) dated 18 June 2020.
- Letter of Statement of Commitment of Member on behalf of KTN (initial) dated 2 January 2022.
- Letter of Statement of Commitment of Member on behalf of SSW (initial) dated 2 January 2022.
- Letter of Statement of Commitment of Member on behalf of RNW (initial) dated 2 January 2022.

**MS A**

As for all the membership requirement documents including Letter of Statement of Commitment for KTKB member are stored in membership folders of each group in the KTKB office. Completeness of document requirements for its members have been checked and evaluated by KTKB administrator. Evaluation carried out by head of the KTKB regarding membership requirements in the form of a checklist of requirements that must be met by group members.

Results of interview with KTKB members, it revealed that members already know the terms of membership and have signed a declaration letter to join KTKB and are committed to comply requirements of RSPO standard.

**MS B**

Based on document review, interview with group manager, and KTKB members as well as field observations, it was found that there are no new planting plan carried out by farmers who are members of KTKB.

Status: Comply
----------------

**PRINCIPLE #3 RESPECT HUMAN RIGHTS, INCLUDING WORKERS' RIGHTS AND CONDITIONS**
**3.1**

**There is no use of forced labour.**

**Eligibility**

All members have signed a statement of commitment related to the prohibition of forced labor. For example, the Farmer's Statement on behalf of STM (initial) in point 3 reads "*Ensure that there is no forced labor practice in plantation operations and stop the existing forced labor practice*". The statement was signed by the farmer on 18 June 2020.

**MS A**

The farmers have also attended training or socialization related to the prohibition of forced labor held by the Farmer Group on 10 February 2022, which was attended by 27 members.

**MS B**

Based on direct interview with all sample members, members can demonstrate and understanding information related to prohibition of force labor. Many members done activities by itself.

Status: Comply
----------------

**3.2**

**Children are not employed or exploited. Work by children is acceptable on family farms, under adult supervision and when not interfering with education programmes. Children are not exposed to hazardous working conditions.**

**Eligibility**

KTKB shows the declaration document not to use child labor in Letter of Statement of Commitment for KTKB members document which explains that members ensure that there is no child labor practice in plantation and stop ongoing practice of child labor. In addition, based on interview with KTKB management and its members, members use contract labor when these activities cannot be carried out alone. There is Ethical Code of KTKB which has been signed by KTKB Group Manager including in Poin 5 which stated, "*ensure no child labour on farm operations and end any existing child labour*". This ethical code has been socialized to smallholder's members on 19-22 October 2019 and 20 January 2022. The worker used is someone who is more than 18 years old. Based on interview with sampel of KTKB members, it is known that members have already known about minimum age of worker which is 18 years old, not allowing children to work in hazardous condition, and children's right to education.

**MS A**

Based on interview with KTKB manager, it is known that several members use workers. In addition, based on interview with KTKB management and its members, members use contract labor when these activities cannot be carried out alone. Based on field observation to all sample member's area, there is no child labor found in the field. Based on interview with KTKB members, they only

use workers of age above 20 years old. They also have contract with their worker which has included prohibition of child labor in the plantation.

KTKB has also shown evidence of conducting socialization related to manpower aspects, minimum wage, discrimination, exploitation, prohibition of child labor, forced labor, and ethical code on 10 February 2022, which was attended by 27 members. This socialization has explained children are not employed or exploited, work by children is acceptable on family farms under adult supervision and when not interfering with education programmes, and children are not exposed to hazardous working conditions. KTKB also has SOP of KTKB New Member Selection and Enrollment (No.: Karya Bersama-SOP-ORG-004) which was set on 20 December 2019 which has explained about member requirement to show identity card to show that members are already above 18 years old.

MS B

Same as MS A

	Status: Comply	
<b>3.3</b>		
Workers' pay complies with minimum legal requirements, mandatory industry standards as defined by national law or collective bargaining, whichever takes priority in local regulations.		
Are there workers on the farm? If no, SKIP		
Eligibility, MS-A, & MS-B		
Based on document review as well as interviews with all sample members and the management of KTKB, it was found that the management of plantations was carried out individually together with other members. Smallholder do not employ employees specifically so that every work is based on principle of mutual cooperation.		
	Status: Comply	
<b>3.4</b>		
Workers understand their rights and freedom to file a complaint to group manager or relevant third parties, including RSPO.		
Are there workers on the farm? If no, SKIP		
Eligibility		
KTKB shows a farmer statement document, which among other things states the farmer's willingness to respect the rights of workers to submit complaints, as signed by the farmer of STM (initial) on 18 June 2020. This has also been socialized to members of the Farmer Group, for example on 10 February 2022, which was attended by 27 members		
KTKB also shows SOP for external and internal complaints No: Karya Bersama-SOP-ORG-005 with a flow chart as follows:		
<ul style="list-style-type: none"> <li>• Submitting grievance/complaint to Head of Working Group in writing or verbally.</li> <li>• Dispute/grievance/complaint handling is done by involving both parties.</li> <li>• Prioritize deliberation to reach consensus. if the complaint is not resolved, then the farmer group and the party filing the complaint can resolve it through the Mediation Forum.</li> <li>• All forms of direct or indirect intimidation must be avoided in accordance with FPIC rules.</li> </ul>		
MS-A		
The Farmer Group shows a farmer statement document, which among other things states the farmer's willingness to respect the rights of workers to submit complaints/complaints, as signed by the farmer of STM (initial) on 18 June 2020. This has also been socialized to members of the Farmer Group, for example on 10 February 2022, which was attended by 27 members carried out by ICS.		
MS-B		
Based on document review as well as interviews with all sample members and the management of KTKB, it was found that the management of plantations was carried out individually together with other members. Smallholder do not employ employees specifically so that every work is based on principle of mutual cooperation. Besides, all sample members also know how to submit complaint and they never submit any complain in 2021-2022.		
	Status: Comply	



**3.5**
**Working conditions and facilities are safe and meet minimum legal requirements.**
**Eligibility**

The Farmer Group shows the SOP for member approval on SOP “*Seleksi dan Penerimaan Anggota Baru Kelompok Tani Karya Bersama*” which was issued on 20 December 2019 which includes the obligation to participate in RSPO certification which is stated in the farmer statement document. The smallholder statement document, among others, states the farmers' commitment to providing safe facility (for example, a special warehouse for storing spray equipment and other chemicals), such as the one signed by the smallholder with the initial KTI on 2 January 2022.

Based on interviews with farmers, they also admitted that they had attended OHS training, particularly related to occupational safety and health on agronomy activities.

**MS A**

The farmers have also attended training or socialization related to the provision of safe work facilities held by the Farmer Group on February 8, 2022. The training held discussed aspects of OHS for farmers in the field, such as technical use of pesticides, how to store and use them in the field, taking into account the safety and health aspects of workers. The training activities were also attended by workers who are also the families of the land owners (members). This is evidenced by the results of an interview with a family member who is also a worker in the Ngudi Makmur group.

**MS B**

Based on direct interview members on all sample members, the members can demonstrate and understanding information related to safe working conditions and facilities such as using PPE (helmet and boots) on harvesting and manuring. From the results of the interview, it was also known that the farmers could obtain a first aid kit with complete contents available in each residence. The complete first aid kit was provided by the Farmer Group management.

Status: Comply

**3.6**
**There is no discrimination, harassment, or abuse on the farm**
**Are there workers on the farm? If no, SKIP**
**Eligibility**

KTKB shows statement of commitment of KTKB members which has been signed with each member. This statement of commitment has including commitment of “*no discrimination, harassment or abuse on the farm*”. Several examples Letter of Statement of Commitment which has been signed by its members are shown below:

- Letter of Statement of Commitment of Member on behalf of KRD dated 18 June 2020.
- Letter of Statement of Commitment of Member on behalf of STM (initial) dated 18 June 2020.
- Letter of Statement of Commitment of Member on behalf of KTN (initial) dated 2 January 2022.
- Letter of Statement of Commitment of Member on behalf of SSW (initial) dated 2 January 2022.
- Letter of Statement of Commitment of Member on behalf of RNW (initial) dated 2 January 2022.

Based on interview with KTKB manager, it is known that several members use workers. In addition, based on interview with KTKB management and its members, members use contract labor when these activities cannot be carried out alone.

**MS A**

KTKB has also shown evidence of conducting socialization related to manpower aspects, minimum wage, discrimination, exploitation, prohibition of child labor, forced labor, and ethical code on 10 February 2022, which was attended by 27 members. The training is provided by ICS. Based on result of interview with KTKB members, it is known that members are aware of the need for a safe workplace.

**MS B**

Based on document review as well as interviews with all sample members and the management of KTKB, it was found that the management of plantations was carried out individually together with other members. Smallholder do not employ employees specifically so that every work is based on principle of mutual cooperation.

Status: Comply

**PRINCIPLE #4 PROTECT, CONSERVE AND ENHANCE ECOSYSTEMS AND THE ENVIRONMENT**
**4.1**

**High Conservation Values (HCVs) on the smallholder plot or within the managed area and High Carbon Stock (HCS) forests identified after November 2019 using the simplified combined HCV-HCS approach are managed to ensure that they are maintained and/or enhanced.**

**Eligibility**

Result of documents verification, interview with group management as well as its members during field visit, it is known if all members have signed and acknowledged membership requirements. All members prior joint with KTKB need to complete the requirements as a prospective member, among others copy id cards, land ownerships evidence, family identity cards and etc. Furthermore, the members also need to sign Letter of Statement of Commitment of Member as mentioned in annex 2.

All member farmers have committed to protecting HCV and HCS forests through a precautionary practice approach. This is contained in Letter of Statement of Commitment of Member as mentioned in annex 2. KTKB has determined their conservation area with prudence by including locations outside the scope of certification as HCV areas. The total area of HCVs contained within the scope of certification is 12.20 hectares in the form of river borders.

Group manager and all smallholder members also understand the basic concepts of HCV areas and HCS forests. This is evidenced by result of interview with sample of KTKB members who stated that they know the types of animals that must be protected, are prohibited from burning, hunting and fishing in ways that are not environmentally friendly (poisoning and electrocution) and are prohibited from applying chemicals. around a body of water with a limit of 20 meters.

**MS A**

KTKB has provided training to all group members related to HCV and HCS management which is shown in the following types of documents:

- Document of Training Activities regarding to HCV Management on 10 January 2022. This training was provided by representatives of ICS and attended by 21 participants.
- Document of Training Activities regarding to agronomical best management practice and landfire firefighting on 11-16 December 2019. This training was provided by representatives of PT KMB.
- Document of Training Activities regarding to RSPO independent smallholder standard on 19-22 October 2019 to smallholders group. This training was provided by representatives of PT KMB.

The training materials are attached in all of the above documents. Based on the results of interviews with a sample of farmer members, information was obtained that all respondents could demonstrate all their knowledge related to the results of the training and had been applied in their respective fields. The results of the interview also showed that they understood very well why the prohibition on land burning was suggested by KTKB, respondents also added that they hoped that KTKB would continue to provide training to ensure continuous improvement.

The training also explained the prohibition on the application of chemicals around the border areas of rivers and water bodies, as well as the destruction of forest areas. The results of interviews with all sample farmers also prove that they have a good understanding and can demonstrate an understanding of HCV and HCS forests, human-wildlife conflict and RTE.

**MS B**

KTKB has identified species related to RTE, HCV, HCS forest as evidenced from the document of High Conservation Value (HCV) Management Results for Independent Smallholders conducted in January 2020 which was carried out in Telaga Antang District. The study has covered 70 farmer members. This activity is carried out because independent smallholders must meet the RSPO principles and criteria to obtain certification. Based on results of initial identification, it was found that types of HCV 1, 3, 4, and 5 that were within the scope of certification are river borders. Based on the identification results from smallholders, for steep areas, swamps, peat, and graveyards are not found around smallholders' land locations.

Besides, KTKB has also shown identification of species related to RTE, HCV, HCS forest as evidenced from the document of High Conservation Value (HCV) Management Results for Addition Area of KTKB conducted in April 2022. The study has covered addition area of new 7 farmer member. Based on results of initial identification, it was found that types of HCV 4 that were within the scope of

certification are river borders. Based on the identification results from smallholders, for steep areas, swamps, peat, and graveyards are not found around smallholders' land locations.

According to Minister of Environment Regulation No. P.106 in 2018 concerning Protected Types of Plants and Animals, there are no protected flora identified in the plantation locations of KTKB members. While, there is five fauna which is categorized as protected animal that such as *Helarctos malayanus* and *Presbytis rubicunda*. The threats to fauna species are hunting, killing and buying and selling of animals by local people or from outside. Conservation action that can be taken if a it is found protected flora or fauna species that is environmental section will inform the local Nature Conservation Agency (BKSDA). KTKB also has provide information board regarding to protected fauna and flora in several places in smallholders' farm.

The training material covering also explained about the importance of maintaining and conserving HCVs and HCS forests, human-wildlife conflict and mitigation efforts, and RTE species and important ecosystems. The results of interviews with all sample farmers concluded that all members are aware of RTE, HCV and HCS forest species in their area. The resource persons were also able to explain the precautionary practices applied in their area, including:

- Protect all animals found in their land area
- Do not hunt all flora and fauna in their environment
- No burning and forest destruction
- Installing a warning board/signboard related to the above.

Status: Comply

#### 4.2

**Where the existing smallholder plot has been planted and cleared after November 2005 or is on an area identified as HCS forests after November 2019 up to the eligibility period, a remediation and compensation process appropriate for smallholders based on Land Use Change Analysis (LUCA) will be applicable (Reference preamble).**

#### Eligibility

KTKB can show information on all plots of smallholders converted and planted with oil palm before and after 2005 as well as all coordinates/maps of plantation plots. A simplified combined HCV approach has also been used which can be proven in the statement of commitment document contained in Letter of Statement of Commitment of KTKB members which shown statements as follows:

- I recognize the importance of sustainable production.
- I will join a farmer group to pursue group certification of the RSPO ISH Standard and comply with the principles and their relevant criteria and indicators
- I will provide the following information to my and group manager:
  - All land holdings
  - Location (coordinates) of all plots currently planted with oil palm
  - Information on all plots converted and planted with oil palm after 2005 (through use of the simplified combined HCV-HCS approach for Smallholders)
  - Any plots located on steep slopes
  - Any plots located on peat
  - Details on plans for replanting and expansion of oil palm
  - Any existing land disputes
  - Ownership and land use status
  - Source of farm labor.

LUCA disclosure result was shown by KTKB on 16 October 2020 for the scope of 70 KTKB members. From the summary, it is known that the study area is 380.19 ha with the result of LUC Analysis Methodology Review: Pass; Final Conservation Liability : 0.00 ha; and Environmental remediation area 12.62 ha.

Based on results of document verification on Data of KTKB in 2022, there are 6 new members added. KTKB has shown Reporting Template for Disclosure of Areas Cleared without Prior HCV Assessment since November 2005 which contained information regarding land plots of six members for scope of land study as many as 23 plots with an area of 48.96 ha. In addition, KTKB has shown Additional HCV Area Assessment Report conducted in April 2022 with study area of 23 plots covering area of 51.19 ha (Calculation based on GIS Application). The results of the HCV assessment in the KTKB farmer's area are 0.05 ha. However, until the ASA-1 assessment is carried out, the report has not yet been sent to the RSPO.

KTKB has not shown evidence of providing information regarding all land plots, especially members of the new group that were

converted and planted with oil palm after November 2005 to the RSPO. This has been NCR No. 2022.02.

#### MS A

LUCA disclosure result was shown by KTKB on 16 October 2020 for the scope of 70 KTKB members. From the summary, it is known that the study area is 380.19 ha with the result of LUC Analysis Methodology Review: Pass; Final Conservation Liability : 0.00 ha; and Environmental remediation area 12.62 ha.

#### MS B

Based on verification of communication between RSPO and KTKB, it shows that the KTKB has identified areas of land use change and has been submitted to the RSPO. Other evidence is the document of the results of the LUCA Study for the scope of 70 farmers conducted in 2020 with the final document out on 16 October 2020 where Final Conservation Liability in this ISH group : 0.00 ha; and Environmental remediation area 12.62 ha.

Status: Nonconformity number 2022.02 with Major Category

#### 4.3

New plantings of independent smallholders, since November 2019:

- Do not replace any HCVs
- Do not replace any HCS forests as defined by the simplified combined HCV-HCS approach
- Are not on steep slopes (more than 25 degrees or as in NI)
- Are not on peat areas of any depth.

Do any smallholders within the group have plans for new plantings of oil palm? If none, SKIP

#### Eligibility, MS A & MS B

Based on result of document verification and interview with KTKB management as well as its member, there is no plan to plant new oil palm outside the current certification area according to long-term plan of 5 years. The last planting year in KTKB is 2018. Based on the 2021 work plan document and the KTKB 5-year business plan, it is known that until 2025 there is no plan for smallholders to plant new oil palms. Results of interviews with group managers and members of KTKB also stated same thing, for plans have not been made. Regarding replanting in conservation areas, all members have signed a declaration not to carry out new plantings in HCV or HCS forests, on steep slopes or on peat. In addition, for all the current KTKB members, there are no areas with these qualifications. KTKB also has SOP No. Karya Bersama-SOP-OPR-002 concerning Land Preparation.

Status: Comply

#### 4.4

Where smallholder plots exist on peat, subsidence and degradation of peat soils is minimised by use of best management practices.

Do any smallholders within the group have existing plots on peat? If no, SKIP

#### Eligibility, MS A & MS B

Based on document verification soil type map of Kelompok Tani Karya Bersama with source of soil type survey map of PT KMB (Karya Makmur Bahagia) as one of coach of farmer group with a scale of 1:150,000, information was obtained that there was no peat in the plots managed by farmers. It is known that types of soil found in KTKB operational area are Dystrudepts, Local Alluvium, and Paleudults. The Farmer Group also presented a smallholder statement document stating, among other things, the farmers' willingness not to carry out new plantings on peatlands and replanting on peatlands only in areas with a low risk of flooding and saltwater intrusion as well as the use of best management practices for oil palm on peatlands, as described above. For example, it has been signed by the farmer on behalf of STM (initial) on 18 June 2020.

Status: Comply

#### 4.5

Plots on peat are replanted only on areas with low risk of flooding or saline intrusion as demonstrated by a risk assessment.

Do any smallholders within the group have plans for replanting plots that are located on peat? If no, SKIP

#### Eligibility, MS A & MS B

Based on document verification on soil type map of Kelompok Tani Karya Bersama with source of soil type survey map of PT KMB (Karya Makmur Bahagia) as one of coach of farmer group with a scale of 1:150,000, information was obtained that there was no peat in the plots managed by farmers. It is known that types of soil found in KTKB operational area are Dystrudepts, Local Alluvium, and Paleudults. The Farmer Group also presented a smallholder statement document stating, among other things, the farmers' willingness

not to carry out new plantings on peatlands and replanting on peatlands only in areas with a low risk of flooding and saltwater intrusion as well as the use of best management practices for oil palm on peatlands, as described above. For example, it has been signed by the farmer on behalf of STM (initial) on 18 June 2020.

Status: Comply

#### 4.6

**Fire is not used on the oil palm plot for preparing land or for pest control, nor open fire for waste management on the farm.**

##### Eligibility, MS A & MS B

Result of documents verification, interview with group management as well as its members during field visit, it is known if all members have signed and acknowledged membership requirements. All members prior joint with KTKB need to complete the requirements as a prospective member, among others copy id cards, land ownerships evidence, family identity cards and etc. Furthermore, the members also need to sign Letter of Statement of Commitment of Member as mentioned in annex 2.

KTKB can show a commitment document not to use fire during land preparation, pest control, or waste management from each member as contained in Letter of Statement of Commitment of Member. Fire is not used on the oil palm plot for preparing land or for pest control, nor open fire for waste management on the farm, and no burning for preparing land or pest control. The commitment has been signed by each member before joining.

KTKB has provided training to all group members related to land preparation, waste management and fire control which is shown in the following types of documents:

- Document of Training Activities regarding to Prohibition of Using Fire for Land Clearing and Waste Management on 20 January 2022. This training was provided by representatives of ICS and attended by 20 participants.
- Document of Training Activities regarding to Hazardous Waste Management on 20 February 2022. This training was provided by representatives of ICS and attended by 20 participants.
- Document of Training Activities regarding to agronomical best management practice and landfire firefighting on 11-16 December 2019. This training was provided by representatives of PT KMB.
- Document of Training Activities regarding to RSPO independent smallholder standard on 19-22 October 2019 to smallholders group. This training was provided by representatives of PT KMB.

The training materials are attached in all of the above documents. Based on the results of interviews with a sample of farmer members, information was obtained that all respondents could demonstrate all their knowledge related to the results of the training and had been applied in their respective fields. The results of the interview also showed that they understood very well why the prohibition on land burning was suggested by KTKB, respondents also added that they hoped that the KTKB would continue to provide training to ensure continuous improvement.

Based on result of field observation and interview with stakeholders, information was obtained that there is no physical evidence of new burning for oil palm land preparation by smallholders. KTKB has also not carried out any replanting activities or new land clearing. The results of the interview also stated that they understood the procedure for prohibiting burning so that when replanting was carried out, they would use the mechanical method.

Based on planting year data, no area was opened by members after joining KTKB members. Results of interviews with KTKB members stated that most of the land planted with oil palm was ex-rice farming or bushland, so that land clearing did not need to be burned.

In handling waste generated during plantation activities, all waste is collected and stored in waste storage warehouse by Environmental Section of KTKB. Waste generated is in the form of fertilizer sacks and pesticide packaging. KTKB members control pests in their fields with pesticides that have been recommended based on the results of studies conducted by group administrators and management. Farmers stated that they had never carried out pest control using fire. Based on the results of interviews and field visits to the plantation area, no identification of the use of fire in new land clearing, waste management or pest control was found. KTKB also has SOP No. Karya Bersama-SOP-OPR-002 concerning Land Preparation, SOP No. Karya Bersama-SOP-OPR-007 regarding Pest and Disease Management, SOP No. Karya Bersama-SOP-K3L-003 concerning Hazardous Waste Management, SOP No. Karya Bersama-SOP-K3L-004 concerning Non-Hazardous Waste Management, and SOP No. Karya Bersama-SOP-K3L-006 concerning Handling of Land Fire.

Status: Comply



**4.7**
**Riparian buffer zones are identified and managed to ensure they are maintained and/or enhanced.**
**Eligibility**

KTKB has identified a riparian buffer zone within the group with result that there are several group members who are members of KTKB that have a riparian zone in their plantation area with a total area of 12.20 ha. All group members represented from sample members have also signed a declaration not to carry out new plantings in riverbank areas which can be demonstrated in statement of commitment document to protect HCV and HCS forests through precautionary practice approach of each member as contained in Letter of Statement of Commitment of each member. Letter of Statement of Commitment which has been signed by each member has shown statements as follows:

- Not clearing or acquiring land from indigenous peoples, local communities, or other users without their free, prior and informed consent (FPIC), based on a simplified FPIC approach
- Resolve any existing disputes
- No new planting or no expansion of existing farms in primary forests, HCV areas, HCS forests, in riparian areas, or on steep slopes (more than 25 degrees or as in National Interpretation)
- Protect HCVs and HCS forests through the precautionary practices approach
- No new planting on peat and replanting on peat only in areas with low risk of flooding and saline intrusion
- Use of best management practices for oil palm on peat
- No burning for preparing land or pest control
- Minimize and control erosion.

**MS A**

KTKB has provided training to all group members regarding the management of riparian buffer zones which are shown in the following types of documents:

- Document of Training Activities regarding to HCV Management on 10 January 2022. This training was provided by representatives of ICS and attended by 21 participants.
- Document of Training Activities regarding to agronomical best management practice and landfire firefighting on 11-16 December 2019. This training was provided by representatives of PT KMB.
- Document of Training Activities regarding to RSPO independent smallholder standard on 19-22 October 2019 to smallholders group. This training was provided by representatives of PT KMB.

The training materials are attached in all of the above documents. Based on the results of interviews with a sample of farmer members, information was obtained that all respondents could demonstrate all their knowledge related to the results of the training and had been applied in their respective fields. Result of the interview with KTKB members also showed that members are aware of prohibition of burning for preparing land or pest control which was suggested by KTKB.

Members of KTKB are aware of the management of river border buffer zones including action plans to maintain river border buffer zones. the group has also made an action plan to maintain and/or enhance the riparian buffer zone. Results of field visit and interview with several group members stated that they already knew how to manage riparian areas, namely by not applying chemicals and allowing them to grow naturally.

**MS B**

Based on result of verification of HCV document, LUCA and maps of distribution of member lands, it is shown that there are several lands belonging to KTKB members located on river borders. The entire area is protected and designated as an HCV area with a total area of 12.20 Ha in riparian category. Some of activities planned are marking of area boundaries, prevention and control of land fire hazards, protection of areas and species of flora and fauna. Types of derivative activities that will be carried out include making signboards prohibiting land clearing by burning, installing a signboard for prohibiting spraying completely, and prohibiting hunting signboards. Result of interview also showed that members were aware of the management of river border buffer zones including action plans to maintain and/or increase river border buffer zones such as not applying chemicals such as fertilizers and pesticides, or not replanting in river border areas. KTKB also has SOP No. Karya Bersama-SOP-K3L-008 concerning HCV Management, SOP No. Karya Bersama-SOP-OPR-010 concerning Water and Soil Conservation. Smallholders maintain and/or increase riparian buffer zone areas as evidenced by interviews and field visits. Results of interview with all sample members stated that they already know how to manage riparian areas such as not using agrochemical for palm oil management in riparian areas.

**Status: Comply**

**4.8**
**Pesticides are used in ways that do not endanger health of workers, family, communities or the environment.**
**Eligibility**

Farmer groups have policies and procedures related to the use of pesticides in the SOP of Chemical Management (Karya Bersama-SOP-K3L-002), in which the use and management of chemicals refers to best practices and priorities in the safety and health aspects of workers.

The Farmer Group shows the SOP for member approval on SOP “*Seleksi dan Penerimaan Anggota Baru Kelompok Tani Karya Bersama*” which was issued on 20 December 2019 which includes the obligation to participate in RSPO certification which is stated in the farmer statement document. The smallholder statement document, among others, states the farmers' willingness to use the best management practices for oil palm which has been signed by all smallholders, such as the one signed by the smallholder with the initial KTI on 2 January 2022.

The results of interviews with farmers, it was concluded that farmers are aware of pesticides that are categorized by the World Health Organization (WHO) in class 1A or 1B and which are included in the list of the Stockholm Convention or the Rotterdam Convention such as paraquat, and are well aware of the negative impacts of using paraquat so that they are committed to will no longer use paraquat in the management of its oil palm plantations.

**MS A**

The Farmer Group has provided training in stages to all group members related to Good Agricultural Practices (GAP), such as:

- Hazardous and toxic waste management training on 20 February 2022.
- Socialization of the ban on the use of fire in land clearing, waste and waste management on 20 January 2022
- HCV management training on January 10, 2022.
- Socialization of employment, Minimum Wage, Discrimination, Exploitation, Forced Labor and Code of Ethics on 10 February 2022.
- Agronomy, OSH and RSPO Introduction Training on 8 February 2022.

The Farmer Group also shows documentation of training materials that contain procedures for using pesticides, awareness of the risks for pregnant and lactating women and young workers when working as pesticide applicators, storage and management of pesticides, as well as introduction to paraquat chemicals and pesticides registered by WHO class 1A or 1B.

Based on field visits and interviews with farmers, it was stated that farmers do not use paraquat pesticides and pesticides registered by WHO with class 1A or 1B status. In addition, farmers also explain the procedures for using pesticides and managing used pesticide packaging.

Furthermore, the Farmer Group shows a recap of the chemical use of Farmer Group members in 2021 – 2022, in which the use of chemicals is used with the active ingredient glyphosate.

**MS B**

Based on field visits and interviews with farmers, it was stated that farmers do not use paraquat pesticides and pesticides registered by WHO with class 1A or 1B status. In addition, farmers also explain the management of used pesticide packaging which is collected to the coordinator of each farmer group, to be submitted to partners who have licensed temporary storage places for hazardous and toxic waste.

	Status: Comply
--	----------------

**4.9**
**The group and smallholders manage pests, diseases, weeds and invasive introduced species using appropriate techniques, including but not limited to Integrated Pest Management (IPM) techniques.**
**Eligibility**

-

**MS A**

The farmer group has a procedure related to integrated pest control in the SOP for Control of Pests and Plant Diseases (Karya Bersama-SOP-OPR-007) which was set on December 20, 2019. The procedure informs:

- The presence of pests/diseases in the field is identified by early detection.

- The pest and disease census system is carried out as a follow-up to the results of early detection by the IPM unit. The census is carried out by calculating the level of pest attack in rows/points in more detail in the area where the attack occurred.
- Control measures are carried out based on the recommendation of the group manager based on the type and stadia of the pest, the level of attack and distribution of the pest, the availability of tools/materials/manpower, climatic and plant conditions as well as the time limit available for control.
- Farmer groups do not use the active ingredient paraquat in controlling weeds in the field.

The Farmer Group has provided training in stages to all group members related to Good Agricultural Practices (GAP), such as:

- Harvest training, workers' rights and conditions.
- Integrated fertilization and pest control.
- Weed control, pesticides and soil and water conservation.
- Emergency first aid and basic fire.

The Farmer Group also shows documentation of training materials containing, among others, procedures for using pesticides such as the use of PPE, good spraying methods, types of weeds, management of invasive species and cultivation of host plants for natural predators.

The results of interviews with farmers, it was concluded that farmers are aware of pesticides that are categorized by the World Health Organization (WHO) in class 1A or 1B and which are included in the list of the Stockholm Convention or the Rotterdam Convention such as paraquat, and are well aware of the negative impacts of using paraquat so that they are committed to will no longer use paraquat in the management of its oil palm plantations.

#### MS B

Furthermore, the Farmer Group shows a recap of the chemical use of Farmer Group members in 2021 – 2022, in which the use of chemicals is used with the active ingredient glyphosate.

Status: Comply
----------------



**3.2 Conformity Checklist of Certificate and Trademark Use**

1.	Evidence of permission or approval certificate and trademark from Certification Body which submitted by Client.
ASA-1	Kelompok Tani Karya Bersama does not use RSPO trademark.
	Status: Comply
2.	Implementation of certificate and trademark used by Client comply with size and type (shape) against Guideline of trademark Use
ASA-1	Kelompok Tani Karya Bersama does not use RSPO trademark.
	Status: Comply
3.	Implementation of Certificate and Trademark is not used on product
ASA-1	Kelompok Tani Karya Bersama does not use RSPO trademark.
	Status: Comply
4.	Controlling of Certificate and Trademark, including withdrawing inappropriate trademark.
ASA-1	Kelompok Tani Karya Bersama does not use RSPO trademark.
	Status: Comply

- 3.3. Identification of Findings, Corrective Action, Observations, Opportunity for Improvement and Noteworthy Positive Components.
- 3.3.1 Identification of Findings, Corrective Actions and Observations at IC MS-B Assessment

NCR No.	:	2021.01	Issued by	:	Trismadi N
Date Issued	:	3 June 2021	Time Limit	:	2 June 2022
NC Grade	:	Major	Date of Closing	:	5 July 2021
Standard Ref. & Requirement	:	D.3.1.  Eligibility: The group and Group Manager have agreed on how the premiums should be used and the agreement is recorded and communicated to the group members. Prices, premiums, and timing of premium payment are clearly communicated and transparent to group members. Premiums disbursed to members at all stages are recorded and the premiums are paid in a timely and convenient manner.  Milestone-A: Disbursement of premiums, including price and timing of the disbursement to group members is clearly recorded.  Milestone-B: -			
Evidence observed (filled by auditor): Based on document verification sighted that group manager has manage the production and selling of FFB's each of members data for period of May 2020 to April 2021. However, currently there is no agreement between each of members regarding to premi price, payment system and payment terms.					
Non-Conformance Description (filled by auditor): The KTKB has not been able to show agreement between each of members regarding to premium price, payment system and payment terms.					
Root Cause Analysis (filled by organization audited): The group has not yet determined the provision for distribution of the sales of certified products later. It cause, the group are focused on the steps to fulfill the ISH RSPO standard in order to obtain RSPO certificate.					
Correction (filled by organization audited): Prepare a letter of agreement on the distribution of premium (result of certified products sales) that apply to member of the all of farmers group.					
Corrective Action (filled by organization audited): The farmer group prepares a group member agreement signed by each of sub group ( <i>POKJA</i> ) dated 8 June 2021. The agreement were contains:  1. Kelompok Tani Karya Bersama will conduct sales using the book & claim system through the RSPO Palm Trace. However, it's possible to sell direct FFB's to the mill. If there is an opportunity. 2. In conducting sales with the Book & Claim system, the group will make sales on a regular basis, taking into account the best prices and offers, while taking into account the stock and actual sales per annum. 3. The premium price obtained from the certified product sales (book & claim & physical sales), will be managed by the group manager. The distribution mechanism as follows: a. 50% of sales proceeds will be managed as group cash and used for management fees. b. The other 50% will be distributed to group members, according to the product yield of each members. 4. The premium distribution to all members will be conducted every semester. If that time period the group doesn't make sales					

with the consideration that there is no good price and offer. That information will be conveyed to all members and the premium distributed in the next period.

The agreement has been socialized to the 35 members on 6 June 2021.

**Assessor Evaluation and Conclusion (filled by auditor):**
**Verification on 5 July 2021**

The unit of certification was shown group members agreement signed by head of sub group of Karya Bersama, Ngudi Makmur, Sido Makmur, and Swakelola. And also signed by group manager dated 8 June 2021, as follows:

1. Kelompok Tani Karya Bersama will conduct sales using the book & claim system through the RSPO Palm Trace. However, it's possible to sell direct FFB's to the mill. If there is an opportunity.
2. In conducting sales with the Book & Claim system, the group will make sales on a regular basis, taking into account the best prices and offers, while taking into account the stock and actual sales per annum.
3. The mium price obtained from the certified product sales (book & claim & physical sales), will be managed by the group manager. The distribution mechanism as follows:
  - a. 50% of sales proceeds will be managed as group cash and used for management fees.
  - b. The other 50% will be distributed to group members, according to the product yield of each members.
4. The premium distribution to all members will be conducted every semester. If that time period the group doesn't make sales with the consideration that there is no good price and offer. That information will be conveyed to all members and the premium distributed in the next period.

The agreement has been socialized to the 35 members on 6 June 2021, before it signed by all members.

**Auditor conclusion:**

Based on above evidences, this nonconformity has been fulfilled.

Verified by : Trismadi N

NCR No.	:	2021.02	Issued by	:	Haikal Ramadhan Karismansyah
Date Issued	:	03 June 2021	Time Limit	:	02 June 2022
NC Grade	:	Major	Date of Closing	:	30 July 2021
Standard Ref. & Requirement	:	<div>4.1</div> <div>High Conservation Values (HCVs) on the smallholder plot or within the managed area and High Carbon Stock (HCS) forests identified after November 2019 using the simplified combined HCV-HCS approach, are managed to ensure that they are maintained and/or enhanced.</div> <div>Milestone-B:</div> <div>Smallholders implement precautionary practices and manage and maintain RTE species, HCVs and HCS forests, where applicable.</div>			
Evidence observed <i>(filled by auditor)</i> : <ul style="list-style-type: none"><li>- Based on the identification results, it is known that there is an HCV area in the form of a river riparian covering an area of 12.15 ha</li><li>- In the HCV management procedure, Document Number : Karya Bersama – SOP – K3L – 001 states that they do not use pesticides or fertilizers (other than mulch) near rivers, ponds, and lakes at a distance of 20 meters</li><li>- Based on the explanations of the land plot owners and group managers, it was stated that the limit area for spraying and applying fertilizer was 50 meters from the river riparian and marked with stakes/paint on the palm trees.</li><li>- The results of the field visit to the 09_SWA plot of land with the initial owner RAI and the 019_KB land plot with the initial SET owner, it was found that the HCV boundary marks were not visible. In addition, there are traces of spray application which cannot be ascertained how far the application is from the river riparian (for land plot No. 09_SWA)</li></ul>					
Non-Conformance Description <i>(filled by auditor)</i> :					

<p>KTKB has not been able to show sufficient evidence that the management of the HCV area (river riparian) has applied the precautionary principle in accordance with the established plan. This become Nonconformity number 2021.02</p>	
<p><b>Root Cause Analysis</b> <i>(filled by organization audited):</i></p> <p>Some members neglect to monitor during the upkeep and harvesting in their field, each members should frequently check for the presence of the stakes (conducted at the same time while upkeep the oil palm plantation). The 50 meter limit is imposed on land owners bordering a main river (Mentaya River). While the other river are refer to the HCV assessment report. The SOP that the limit for the use of chemicals is 20 meters.</p>	
<p><b>Correction</b> <i>(filled by organization audited):</i></p> <ul style="list-style-type: none"> <li>- KTKB conducted reschedules the installation of HCV stakes while ensuring that the previously installed HCV stakes is still exist.</li> <li>- Socialization to the all of members to conducting stakes condition monitoring on their plantation during daily activities. And than they should report to the ICS team. If the HCV stakes are lost, and replaced with new ones.</li> </ul>	
<p><b>Corrective Action</b> <i>(filled by organization audited):</i></p> <ul style="list-style-type: none"> <li>- Regularly monitoring of HCV stakes conducted at the same time while upkeep/harvesting activities by each of members.</li> <li>- ICS will be installing HCV markers that are painted blue to ensuring that there are no chemical application on the bufferzone areas.</li> <li>- ICS will be monitor and maintaining the HCV stakes conditions.</li> <li>- The regularly HCV management socialization to all members.</li> </ul>	
<p><b>Assessor Evaluation and Conclusion</b> <i>(filled by auditor):</i></p> <p><b>Verification on 3 July 2021</b></p> <p>KTKB were shown several evidences, such as:</p> <ul style="list-style-type: none"> <li>- HCV stakes monitoring schedule on the 45 land percil/members. The buffer zone marker that are painted blue.</li> <li>- HCV stakes monitoring and installation record dated 19 &amp; 21 June 2021 at 10 location, as follows: land percil number 16KB, 19KB, 73KB, 9SWA, 1SWA, 2SWA, 3SWA, 5SWA, 11NM, and 25NM.</li> </ul> <p>However there are no evidences about minute of meeting HCV socialization to the members. The nonconformity is still open.</p> <p><b>Verification on 30 July 2021</b></p> <p>KTKB were shown several evidences, such as:</p> <ol style="list-style-type: none"> <li>1. Minute of meeting of HCV management to 47 members and board dated 19 June 2021, it was explained about: <ul style="list-style-type: none"> <li>- HCV stakes monitoring and installation schedule.</li> <li>- HCV area management socialization (the main river/Mentaya River are 50 meter and small river are 20 meter).</li> <li>- HCV area are prohibited from chemicals application.</li> <li>- Land title poles installation and monitoring socialization.</li> <li>- Beneficial plant (<i>Turnera</i> sp0 planting schedule as nettle control (IPM).</li> </ul> </li> <li>2. HCV monitoring record dated 19, 21, 26 and 27 June 2021. For example: buffer zone on the field of Mr. YNS with area 0.3900 Hectare (50 meter bufferzone of Mentaya River) and Mr SHN with area 0.0249 Ha (20 meter bufferzone of Anak Raya River).</li> </ol> <p><b>Auditor Conclusion:</b></p> <p>Based on above explanation, this nonconformity has been fulfilled.</p>	
<b>Verified by</b>	: Haikal Ramadhan Kharismansyah

<i>NCR No.</i>	:	2021.03	<i>Issued by</i>	:	Haikal Ramadhan Karismansyah
<i>Date Issued</i>	:	03 June 2021	<i>Time Limit</i>	:	02 June 2022
<i>NC Grade</i>	:	Major	<i>Date of Closing</i>	:	30 July 2021
<i>Standard Ref. &amp; Requirement</i>	:	4.9 The group and smallholders manage pests, diseases, weeds and invasive introduced species using appropriate techniques, including but not limited to Integrated Pest Management (IPM) techniques.  Milestone-B The group and smallholders maximise use of IPM approaches to minimise use of pesticides and herbicides on their farm.			
Evidence observed <i>(filled by auditor)</i> : <ul style="list-style-type: none"><li>- Procedures for Control of Pests and Plant Diseases (Document Number : Karya Bersama-SOP-OPR-007), among others, state the Early Warning System (Early Detection). Detection is done when the symptoms of an attack and is formulated in the form of an infestation map. The follow-up to the detection is a census. The results of the census are analyzed to obtain the Economic Threshold Value. The value is used as one of the considerations for the type of control carried out</li><li>- Based on the results of an interview with one of the group members in land plot No. 8, it is known that in 2020 there has been the use of an insecticide with the active ingredient fipronil (Trademark Regent) to control nettle caterpillars. In the procedure, it is stated that the control of nettle caterpillars uses insecticides with active ingredients such as Deltamethrin, Lambda Sihalotrin, Brtasiflutrin, and Cypermethrin.</li><li>- Until the ST-2 assessment is completed, documentation regarding the IPM (Plan, Realization, and Follow-up) has not been shown.</li></ul>					
Non-Conformance Description <i>(filled by auditor)</i> : <ul style="list-style-type: none"><li>1. KTKB has not been able to show sufficient evidence that the management of plant pests and diseases has been in accordance with the established procedures</li><li>2. KTKB has not been able to show sufficient evidence that it has maximized the use of the IPM approach to minimize the use of pesticides</li></ul>					
Root Cause Analysis <i>(filled by organization audited)</i> : <p>There is an error in providing information related to the pest attacks and their control. Due to the absence of pest attacks in 2020, the census and reporting were not carried out by ICS. The group member and boards will carry out census and reporting as prevention planning in 2021.</p>					
Correction <i>(filled by organization audited)</i> : <p>KTKB presents information/reports regarding the pest and disease census on each members oil palm plantation.</p>					
Corrective Action <i>(filled by organization audited)</i> : <ul style="list-style-type: none"><li>1. The group manager and ICS have re-confirmed to Mr SUG and carried out field checks on the field 08_SM percil. It was obtained information that nettle attack on his plot didn't occur in 2020, however in 2018 till early 2019. Where at that time the group had not received training about IPM. So there are no regent used nor in the hazardous waste management report.</li><li>2. The ICS team ensuring on the field survey result that no pest and disease were detected in group members areas.</li><li>3. As a preventive action, the KTKB prepares a schedule for planting beneficial plants.</li><li>4. IPM report period of January to June 2021.</li></ul>					
Assessor Evaluation and Conclusion <i>(filled by auditor)</i> : <p>Verification on 30 July 2021</p> <p>KTKB were shown several evidences, such as:</p> <ul style="list-style-type: none"><li>1. IPM monitoring period of January to June 2021, such as: <i>Oryctes, Tirathaba, rat, termites, nettles, Ganoderma, fruit rot</i> on</li></ul>					

each members.

2. The schedule for beneficial plant (*Turnera* sp) planting, for example: 30 members in September 2021 and 25 members in October 2021.

**Auditor Conclusion:**

Based on above explanation, this nonconformity has been fulfilled.

<b>Verified by</b>	:	Haikal Ramadhan Kharismansyah
--------------------	---	-------------------------------

**3.3.2 Identification of Findings, Corrective Actions and Observations at ASA-1 MS-B Assessment**

NCR No.	:	2022.01	Issued by	:	Briyogi Shadiwa
Date Issued	:	28 July 2022	Time Limit	:	27 October 2022
NC Grade	:	Major	Date of Closing	:	26 October 2022
Standard Ref. & Requirement	:	B1.1 The Group ICS contains documented policies and procedures for operational management.  B1.1 MS B The ICS is implemented and an annual internal audit of the group is conducted for all group members and all audit findings are resolved.			
Evidence observed <i>(filled by auditor):</i> Farmer groups have not been able to show evidence at the time of the assessment activity that an annual internal audit has been carried out on all members of the farmer group.					
Non-Conformance Description <i>(filled by auditor):</i> The group's annual internal audit has not yet been conducted on all group members (76 members in total).					
Root Cause Analysis <i>(filled by organization audited):</i>  The ICS team does not yet understand the criteria and obligations that must be met (based on RSPO), that an internal audit is carried out on all land belonging to group members.					
Correction <i>(filled by organization audited):</i>  The ICS Team and the Group Manager evaluate performance, and arrange a schedule for carrying out internal audits of group members, at least 1x in 1 year, according to the applicable procedures.					
Corrective Action <i>(filled by organization audited):</i>  KTKB conducts an annual review and evaluation of the internal audit schedule of the group & ICS Team					
Assessor Evaluation and Conclusion <i>(filled by auditor):</i>  <u>Auditor Verification (10 October 2022)</u> The Farmer's Group showed the recording of the Joint Work Internal Audit, but there was still some evidence that needed to be attached, such as: evaluation of the ICS team's performance and the audit implementation plan/program that has been set for the next year.  <u>Auditor Verification (26 October 2022)</u> The Farmer Group shows evidence of improvement in the form of an audit implementation program in the Internal Audit Schedule document for 2022 – 2023 which contains information on the date of each member's audit. The program was developed by the ICS team leader and approved by the Group Manager as a basis for understanding the implementation of an audit according to RSPO requirements by January 2022.  Based on objective evidences, nonconformity in this indication has been fulfilled.					
Verified by	:	Briyogi Shadiwa			



NCR No.	:	2022.02	Issued by	:	Erika Lucitawati
Date Issued	:	28 July 2022	Time Limit	:	27 October 2022
NC Grade	:	Major	Date of Closing	:	27 October 2022
Standard Ref. & Requirement	:	4.2 Where the existing smallholder plot has been planted and cleared after November 2005 or is on an area identified as HCS forests after November 2019 up to the eligibility period, a remediation and compensation process appropriate for smallholders based on Land Use Change Analysis (LUCA) will be applicable (Reference preamble).  Eligibility: Smallholders provide information on all smallholder plots converted and planted with oil palm after November 2005, through use of the simplified combined HCV-HCS approach for Smallholders (reference 1.1.E, Annex 2).			
<b>Evidence observed</b> <i>(filled by auditor):</i> Based on results of document verification on Data of KTKB in 2022, there are 6 new members added. KTKB has shown Reporting Template for Disclosure of Areas Cleared without Prior HCV Assessment since November 2005 which contained information regarding land plots of six members for scope of land study as many as 23 plots with an area of 48.96 ha. In addition, KTKB has shown Additional HCV Area Assessment Report conducted in April 2022 with study area of 23 plots covering area of 51.19 ha (Calculation based on GIS Application). The results of the HCV assessment in the KTKB farmer's area are 0.05 ha. However, until the ASA-1 assessment is carried out, the report has not yet been sent to the RSPO.					
<b>Non-Conformance Description</b> <i>(filled by auditor):</i> KTKB has not shown evidence of providing information regarding all land plots, especially members of the new group that were converted and planted with oil palm after November 2005 to the RSPO.					
<b>Root Cause Analysis</b> <i>(filled by organization audited):</i> New member is added soon to surveillance audit. KTKB has procedure of New Member Recruitment (Karya Bersama-SOP-ORG-004) to filter of new member to be. In previous assessment period, KTKB has not been established mechanism to give information to RSPO. This has been agreed by KTKB soon to surveillance audit due to management and ICS Team of KTKB are ensuring of group regulation and P&C(s) implementation of new member to be. KTKB is going to established mechanism to give information to RSPO regarding new member.					
<b>Correction</b> <i>(filled by organization audited):</i> Reporting new member added to RSPO membership as well as LUC analysis and other new member register document.					
<b>Corrective Action</b> <i>(filled by organization audited):</i> KTKB has been reviewed SOP and time frame of new member reporting to RSPO in Annual Communication On Process (ACOP) to RSPO. This can be seen in Karya Bersama-SOP-ORG-004-R01, point 5.10 and 5.11.					
<b>Assessor Evaluation and Conclusion</b> <i>(filled by auditor):</i> <b>Auditor Verification (10 October 2022)</b> 1. Auditor response regarding to root cause analysis and corrective action which still needs response from KTKB. 2. Result of communication by email to RSPO regarding to LUCA is shown below: a. KTKB sent information regarding addition of 6 new member with area of 48.96 ha to RSPO on 3 August 2022. b. RSPO sent response which stated that RSPO still needs clarification from KTKB on 6 August 2022 c. KTKB sent first clarification to disclosure review process to RSPO on 12 August 2022. d. RSPO sent email to ensure farmers amount, plots, and area which includes in disclosure process on 16 August 2022. Farmers amount is 7 farmers (23 plots) with total managed area of 48.96 ha.					



- e. RSPO sent final report of LUCA to KTKB members of 7 farmers (48.96 ha) on 5 September 2022 which stated, "*Terlampir hasil final laporan LUCA untuk Kelompok Tani Karya Bersama. Status LUCA kini adalah Pass, dengan Final Conservation Liability 0 ha, dan Environmental Remediation Area 0 ha.*"
3. LUC Analysis Verification Result Document Version 1 on 2 September 2022 which is informed that there is addition of managed area of 48.96 ha with Final Conservation Liability 0 ha and Environmental Remediation Area 0 ha.

Based on explanation above, result of final report of LUCA to KTKB members of 7 farmers (48.96 ha) showed that LUCA status "Pass", Final Conservation Liability 0 ha, and Environmental Remediation Area 0 ha. But there is still auditor response regarding to root cause analysis and corrective action which still needs response from KTKB. Therefore, this nonconformity has not been fulfilled.

#### Auditor Verification (27 October 2022)

KTKB has been established root cause analysis, correction, and corrective action. Besides, auditor response regarding to root cause analysis and corrective action in previous verification has been responded by KTKB. Based on document verification, KTKB has also shown documents which have been shown in previous verification. Therefore, nonconformity in this indication has been fulfilled.

<b>Verified by</b>	:	Erika Lucitawati
--------------------	---	------------------

### 3.3.3. Opportunity for Improvement







No	Ref. Std.	Description
1	D.1	The group has a procedure and system in place for the tracking of FFB.  KTKB is encouraged to develop written procedures for activities that have been carried out related to monitoring the recording of sales of FFB sales of farmer members.

### 3.3.4. Noteworthy Positive Components

No	Description
1	Commitment to apply the principles of sustainable palm oil management.
2	Presentation of documents and good communication with the companion team

**3.4 Summary of Arising Issues from Public and Auditor Verification.**

Public Issues (Institution/ NGO/Community)	Auditor Verification
<p>Plantation Agency of Kotawaringin Timur District Head of Plantation Division 25 July 2022</p> <p>Some planters are in the process of issuing a "Cultivation Registration Certificate". All smallholder lands are also located in other use areas. There is no use of fire for land clearing, waste management, and pest management. There is no land fire occurred in KTKB land in 2021-2022.</p>	<p>There's no negative issue need to be further clarification.</p>
<p>Agung Mulya Village Head of Village 26 July 2022</p> <p>All smallholder lands are also located in other use areas. There is no use of fire for land clearing, waste management, and pest management. There is no land fire occurred in KTKB land in 2021-2022. There is also no indication of environmental pollution due to KTKB operational activity.</p>	<p>There's no negative issue need to be further clarification.</p>

4.0	CERTIFIED ORGANISATION'S ACKNOWLEDGEMENT OF INTERNAL RESPONSIBILITY		
4.1	Formal Sign-off of Assessment Findings		
	<p>Hereunder sign by management representative from inspected company to acknowledge a field assessment and agree for all content explained in this assessment report, included of non-compliance findings.</p> <p>Signed on behalf of:</p> <table><tr><td><p>Kelompok Tani Karya Bersama Group Manager</p><p><u>Yoyok Kuswoyo</u> Thursday, 27 October 2022</p></td><td><p>Mutuagung Lestari Lead Auditor</p><p><u>Briyogi Shadiwa</u> Thursday, 27 October 2022</p></td></tr></table>	<p>Kelompok Tani Karya Bersama Group Manager</p>  <p><u>Yoyok Kuswoyo</u> Thursday, 27 October 2022</p>	<p>Mutuagung Lestari Lead Auditor</p>  <p><u>Briyogi Shadiwa</u> Thursday, 27 October 2022</p>
<p>Kelompok Tani Karya Bersama Group Manager</p>  <p><u>Yoyok Kuswoyo</u> Thursday, 27 October 2022</p>	<p>Mutuagung Lestari Lead Auditor</p>  <p><u>Briyogi Shadiwa</u> Thursday, 27 October 2022</p>		

**Appendix 1. List of Stakeholder Contacted in the RSPO Certification Process**

No	Institution/ NGO/ Community	Address	Phone/ Email	Form of Communication	Date of Contact	Response	
						Yes	No
1	Plantation Agency	Kotawaringin Timur District	-	Direct Interview	25 July 2022	√	
2	Agung Mulya Village	Kotawaringin Timur District	-	Direct Interview	26 July 2022	√	
3	Ngudi Makmur Smallholder Group	Kotawaringin Timur District	-	Direct Interview	26 July 2022	√	
4	Karya Bersama Smallholder Group	Kotawaringin Timur District	-	Direct Interview	26 July 2022	√	
5	WWF	Jakarta	Email	Questionnaire via Email	11 July 2022		√
6	Sawit Watch	Jakarta	Email	Questionnaire via Email	11 July 2022		√
7	WALHI	Jakarta	Email	Questionnaire via Email	11 July 2022		√
8	AMAN	Jakarta	Email	Questionnaire via Email	11 July 2022		√

**Appendix 2. Assessment Program**

DATE	25 s/d 28 July 2022	
PLANNED TIME	PROCESSES / CLAUSES TO BE AUDITED	AUDITOR
<b>Monday, 25 July 2022</b>		
08.00 – 13.40	JAKARTA : QG-714 → SURABAYA (TRANSIT) : QG-1462 → SAMPIT	BSH/ELC
14.00 – 16.00	SAMPIT → KELOMPOK TANI KARYA BERSAMA	BSH/ELC
16.00 – 17.00	Opening meeting <ul style="list-style-type: none"> <li>Auditee Speech (Introduction of PIC, Profile of Certified Management Unit)</li> <li>Auditor Team Speech (Introduction, Audit Objective, Audit Scope, Audit Plan Discussion, Determine of Audit Sample, Transparency and Confidentiality Clarification)</li> </ul>	BSH/ELC
<b>Tuesday, 26 July 2022</b>		
08.00 – 12.00	Field Observation to Operational Activities, Supporting Facilities and Consultation with Related Villages in Kotawaringin Timur District.	BSH/ELC
12.00 – 14.00	Break	BSH/ELC
14.00 – 17.00	<ul style="list-style-type: none"> <li>Document review and completing audit checklist.</li> <li>Presentation of Daily Progress.</li> </ul>	BSH/ELC
<b>Wednesday, 27 July 2022</b>		
08.00 – 12.00	<ul style="list-style-type: none"> <li>Continue Field Observation</li> <li>Document review and completing audit checklist.</li> </ul>	BSH/ELC
12.00 – 14.00	Break	BSH/ELC
14.00 – 17.00	<ul style="list-style-type: none"> <li>Document review and completing audit checklist.</li> <li>Presentation of Daily Progress.</li> </ul>	BSH/ELC
<b>Thursday, 28 July 2021</b>		
08.00 – 10.00	Closing Meeting	BSH/ELC
10.00 – 12.00	KELOMPOK TANI KARYA BERSAMA → SAMPIT	BSH/ELC
14.05 – 19.35	SAMPIT : QG-1463 → SURABAYA (TRANSIT) : QG-719 → JAKARTA	BSH/ELC

**Appendix 3. Smallholder Data**

No.	Smallholder Name	Location		Coordinate		Area (Ha)		Actual FFB production (MT/Year)	Yield (MT/Ha/Year)	Projection FFB Production (MT/Year)	Yield Projection (MT/Ha/Year)	Date of Joining	Date of Leaving
				Latitude (S)	Longitude (E)	Total Area	Production Area						
1	Yoyok Kuswoyo	Telaga Antang	Kalimantan Tengah	1° 47' 3" S	112° 38' 15" E	1.61	1.61	46.59	29.01	43.87	27.32	11-Jun-20	
2	Yoyok Kuswoyo	Telaga Antang	Kalimantan Tengah	1° 47' 1" S	112° 38' 39" E	2.01	2.01	58.30	29.01	54.66	27.19	11-Jun-20	
3	Yoyok Kuswoyo	Telaga Antang	Kalimantan Tengah	1° 47' 2" S	112° 38' 10" E	2.00	2.00	58.01	29.01	54.39	27.19	11-Jun-20	
4	Yoyok Kuswoyo	Telaga Antang	Kalimantan Tengah	1° 47' 2" S	112° 38' 6" E	1.53	1.53	44.38	29.01	41.84	27.35	11-Jun-20	
5	Yoyok Kuswoyo	Telaga Antang	Kalimantan Tengah	1° 47' 8" S	112° 38' 36" E	0.80	0.80	23.21	29.01	22.36	27.94	11-Jun-20	
6	Yoyok Kuswoyo	Telaga Antang	Kalimantan Tengah	1° 47' 3" S	112° 38' 12" E	2.00	2.00	58.01	29.01	54.39	27.19	11-Jun-20	
7	Yoyok Kuswoyo	Telaga Antang	Kalimantan Tengah	1° 47' 2" S	112° 38' 11" E	2.11	2.11	61.32	29.01	57.43	27.17	11-Jun-20	
8	Yoyok Kuswoyo	Telaga Antang	Kalimantan Tengah	1° 47' 1" S	112° 38' 34" E	2.00	2.00	58.01	29.01	54.39	27.19	11-Jun-20	
9	Yoyok Kuswoyo	Telaga Antang	Kalimantan Tengah	1° 47' 3" S	112° 38' 18" E	0.75	0.75	21.76	29.01	21.02	28.03	11-Jun-20	
10	Yoyok Kuswoyo	Telaga Antang	Kalimantan Tengah	1° 47' 2" S	112° 38' 8" E	2.00	2.00	58.01	29.01	54.39	27.19	11-Jun-20	
11	Yoyok Kuswoyo	Telaga Antang	Kalimantan Tengah	1° 47' 1" S	112° 38' 36" E	1.30	1.30	37.74	29.01	35.73	27.46	11-Jun-20	
12	Efda Wardayani	Telaga Antang	Kalimantan Tengah	1° 47' 2" S	112° 38' 4" E	0.90	0.90	26.07	29.01	25.00	27.81	11-Jun-20	
13	Efda Wardayani	Telaga Antang	Kalimantan Tengah	1° 47' 2" S	112° 38' 49" E	1.85	1.85	53.61	29.01	50.33	27.24	11-Jun-20	
14	Setyo Hartono	Telaga Antang	Kalimantan Tengah	1° 45' 5" S	112° 36' 45" E	2.00	2.00	56.24	28.07	54.30	27.10	11-Jun-20	
15	Setyo Hartono	Telaga Antang	Kalimantan Tengah	1° 46' 2" S	112° 36' 50" E	1.53	1.53	43.48	28.42	41.70	27.26	11-Jun-20	
16	Setyo Hartono	Telaga Antang	Kalimantan Tengah	1° 45' 5" S	112° 36' 47" E	1.46	1.46	41.22	28.33	39.71	27.29	11-Jun-20	
17	Setyo Hartono	Telaga Antang	Kalimantan Tengah	1° 45' 5" S	112° 36' 42" E	2.00	2.00	56.08	28.04	54.21	27.10	11-Jun-20	
18	Setyo Hartono	Telaga Antang	Kalimantan Tengah	1° 45' 4" S	112° 38' 57" E	2.92	2.92	81.64	27.95	78.71	26.95	11-Jun-20	
19	Setyo Hartono	Telaga Antang	Kalimantan Tengah	1° 46' 3" S	112° 36' 33" E	2.00	2.00	56.42	28.21	54.21	27.10	11-Jun-20	
20	Setyo Hartono	Telaga Antang	Kalimantan Tengah	1° 46' 3" S	112° 38' 50" E	1.00	1.00	28.89	28.89	27.60	27.60	11-Jun-20	
21	Mandoyo	Telaga Antang	Kalimantan Tengah	1° 43' 4" S	112° 39' 45" E	2.00	2.00	40.09	20.05	40.11	20.05	11-Jun-20	
22	Mandoyo	Telaga Antang	Kalimantan Tengah	1° 43' 4" S	112° 39' 41" E	1.71	1.71	34.28	20.05	34.44	20.14	11-Jun-20	
23	Mandoyo	Telaga Antang	Kalimantan Tengah	1° 43' 3" S	112° 40' 11" E	1.50	1.50	30.07	20.05	30.33	20.22	11-Jun-20	
24	Mandoyo	Telaga Antang	Kalimantan Tengah	1° 43' 1" S	112° 39' 31" E	1.80	1.80	36.08	20.05	36.20	20.11	11-Jun-20	

No.	Smallholder Name	Location		Coordinate		Area (Ha)		Actual FFB production (MT/Year)	Yield (MT/Ha/ Year)	Projection FFB Production (MT/Year)	Yield Projection (MT/Ha/ Year)	Date of Joining	Date of Leaving
				Latitude (S)	Longitude (E)	Total Area	Production Area						
25	Mandoyo	Telaga Antang	Kalimantan Tengah	1° 43' 4" S	112° 39' 54" E	2.00	2.00	40.09	20.05	40.11	20.05	11-Jun-20	
26	Mandoyo	Telaga Antang	Kalimantan Tengah	1° 43' 3" S	112° 39' 46" E	2.00	2.00	40.09	20.05	40.11	20.05	11-Jun-20	
27	Mandoyo	Telaga Antang	Kalimantan Tengah	1° 43' 4" S	112° 39' 38" E	2.00	2.00	40.09	20.05	40.11	20.05	11-Jun-20	
28	Mandoyo	Telaga Antang	Kalimantan Tengah	1° 43' 4" S	112° 39' 49" E	2.00	2.00	40.09	20.05	40.11	20.05	11-Jun-20	
29	Mandoyo	Telaga Antang	Kalimantan Tengah	1° 43' 4" S	112° 40' 9" E	3.10	3.10	62.14	20.05	61.61	19.88	11-Jun-20	
30	Mandoyo	Telaga Antang	Kalimantan Tengah	1° 43' 2" S	112° 39' 33" E	1.17	1.17	23.35	20.05	23.78	20.41	11-Jun-20	
31	Mandoyo	Telaga Antang	Kalimantan Tengah	1° 43' 2" S	112° 39' 41" E	1.30	1.30	26.06	20.05	26.42	20.32	11-Jun-20	
32	Yayuk Yuliana	Telaga Antang	Kalimantan Tengah	1° 47' 3" S	112° 38' 18" E	0.75	0.75	18.38	24.50	18.19	24.26	11-Jun-20	
33	Yayuk Yuliana	Telaga Antang	Kalimantan Tengah	1° 46' 5" S	112° 38' 39" E	1.33	1.33	32.64	24.50	31.54	23.68	11-Jun-20	
34	Yayuk Yuliana	Telaga Antang	Kalimantan Tengah	1° 46' 5" S	112° 37' 57" E	1.00	1.00	24.50	24.50	23.92	23.92	11-Jun-20	
35	Yayuk Yuliana	Telaga Antang	Kalimantan Tengah	1° 46' 5" S	112° 38' 35" E	2.06	2.06	50.53	24.50	48.27	23.41	11-Jun-20	
36	Yayuk Yuliana	Telaga Antang	Kalimantan Tengah	1° 47' 2" S	112° 38' 16" E	1.50	1.50	36.78	24.50	35.41	23.59	11-Jun-20	
37	Yayuk Yuliana	Telaga Antang	Kalimantan Tengah	1° 47' 2" S	112° 38' 16" E	2.01	2.01	49.25	24.50	47.08	23.42	11-Jun-20	
38	Yayuk Yuliana	Telaga Antang	Kalimantan Tengah	1° 47' 3" S	112° 38' 14" E	1.40	1.40	34.31	24.50	33.09	23.64	11-Jun-20	
39	Yayuk Yuliana	Telaga Antang	Kalimantan Tengah	1° 46' 5" S	112° 37' 57" E	1.00	1.00	24.50	24.50	23.92	23.92	11-Jun-20	
40	Yayuk Yuliana	Telaga Antang	Kalimantan Tengah	1° 46' 4" S	112° 37' 27" E	1.00	1.00	24.50	24.50	23.92	23.92	11-Jun-20	
41	Nunik Hujani Rahayu	Telaga Antang	Kalimantan Tengah	1° 45' 2" S	112° 37' 8" E	2.00	2.00	46.10	23.04	52.47	26.22	11-Jun-20	
42	Nunik Hujani Rahayu	Telaga Antang	Kalimantan Tengah	1° 45' 3" S	112° 37' 9" E	2.00	2.00	46.08	23.04	52.44	26.22	11-Jun-20	
43	Nunik Hujani Rahayu	Telaga Antang	Kalimantan Tengah	1° 45' 2" S	112° 37' 12" E	1.02	1.02	23.50	23.04	27.24	26.70	11-Jun-20	
44	Suyitno	Telaga Antang	Kalimantan Tengah	1° 45' 3" S	112° 38' 18" E	2.00	2.00	47.10	23.55	49.01	24.51	11-Jun-20	
45	Suyitno	Telaga Antang	Kalimantan Tengah	1° 45' 0" S	112° 38' 20" E	1.00	1.00	25.06	25.06	25.01	25.01	11-Jun-20	
46	Suyitno	Telaga Antang	Kalimantan Tengah	1° 46' 1" S	112° 38' 26" E	1.00	1.00	24.90	24.90	25.01	25.01	11-Jun-20	
47	Suyitno	Telaga Antang	Kalimantan Tengah	1° 46' 7" S	112° 38' 6" E	1.00	1.00	25.06	25.06	25.01	25.01	11-Jun-20	
48	Suyitno	Telaga Antang	Kalimantan Tengah	1° 46' 1" S	112° 38' 20" E	1.00	1.00	26.50	26.50	25.01	25.01	11-Jun-20	
49	Suyitno	Telaga Antang	Kalimantan Tengah	1° 46' 1" S	112° 38' 24" E	1.00	1.00	24.32	24.32	25.01	25.01	11-Jun-20	
50	Suyitno	Telaga Antang	Kalimantan Tengah	1° 46' 2" S	112° 38' 18" E	1.00	1.00	24.32	24.32	25.01	25.01	11-Jun-20	



No.	Smallholder Name	Location		Coordinate		Area (Ha)		Actual FFB production (MT/Year)	Yield (MT/Ha/Year)	Projection FFB Production (MT/Year)	Yield Projection (MT/Ha/Year)	Date of Joining	Date of Leaving
				Latitude (S)	Longitude (E)	Total Area	Production Area						
51	Sugianto	Telaga Antang	Kalimantan Tengah	1° 46' 2" S	112° 38' 49" E	1.00	1.00	29.91	29.91	27.81	27.81	11-Jun-20	
52	Sugianto	Telaga Antang	Kalimantan Tengah	1° 46' 1" S	112° 38' 22" E	1.00	1.00	29.91	29.91	27.81	27.81	11-Jun-20	
53	Sugianto	Telaga Antang	Kalimantan Tengah	1° 46' 1" S	112° 38' 17" E	1.00	1.00	29.91	29.91	27.81	27.81	11-Jun-20	
54	Sugianto	Telaga Antang	Kalimantan Tengah	1° 46' 2" S	112° 38' 23" E	1.00	1.00	29.91	29.91	27.81	27.81	11-Jun-20	
55	Sutrisno	Telaga Antang	Kalimantan Tengah	1° 46' 3" S	112° 38' 43" E	1.00	1.00	29.53	29.53	25.57	25.57	11-Jun-20	
56	Sutrisno	Telaga Antang	Kalimantan Tengah	1° 46' 2" S	112° 38' 45" E	1.00	1.00	29.53	29.53	25.57	25.57	11-Jun-20	
57	Sutrisno	Telaga Antang	Kalimantan Tengah	1° 46' 1" S	112° 38' 36" E	1.00	1.00	29.53	29.53	25.57	25.57	11-Jun-20	
58	Sutrisno	Telaga Antang	Kalimantan Tengah	1° 46' 1" S	112° 38' 19" E	1.00	1.00	29.53	29.53	25.57	25.57	11-Jun-20	
59	Sardi	Telaga Antang	Kalimantan Tengah	1° 46' 2" S	112° 38' 22" E	1.00	1.00	27.40	27.40	26.57	26.57	11-Jun-20	
60	Sardi	Telaga Antang	Kalimantan Tengah	1° 46' 3" S	112° 38' 44" E	1.00	1.00	24.50	24.50	22.97	22.97	11-Jun-20	
61	Marmi	Telaga Antang	Kalimantan Tengah	1° 46' 3" S	112° 38' 8" E	1.00	1.00	28.00	28.00	22.83	22.83	11-Jun-20	
62	Marmi	Telaga Antang	Kalimantan Tengah	1° 46' 2" S	112° 38' 6" E	1.00	1.00	28.00	28.00	22.83	22.83	11-Jun-20	
63	Marmi	Telaga Antang	Kalimantan Tengah	1° 46' 2" S	112° 38' 9" E	1.00	1.00	28.00	28.00	22.83	22.83	11-Jun-20	
64	Paiman P	Telaga Antang	Kalimantan Tengah	1° 46' 1" S	112° 36' 28" E	1.00	1.00	27.83	27.83	21.76	21.76	11-Jun-20	
65	Paiman P	Telaga Antang	Kalimantan Tengah	1° 46' 1" S	112° 36' 28" E	1.00	1.00	27.83	27.83	23.76	23.76	11-Jun-20	
66	Paiman P	Telaga Antang	Kalimantan Tengah	1° 46' 1" S	112° 37' 46" E	1.17	1.17	32.45	27.83	27.54	23.61	11-Jun-20	
67	Paiman P	Telaga Antang	Kalimantan Tengah	1° 46' 3" S	112° 37' 47" E	0.80	0.80	22.26	27.83	19.20	24.01	11-Jun-20	
68	Paiman P	Telaga Antang	Kalimantan Tengah	1° 46' 1" S	112° 38' 40" E	1.00	1.00	27.83	27.83	23.76	23.76	11-Jun-20	
69	Paiman P	Telaga Antang	Kalimantan Tengah	1° 46' 1" S	112° 37' 59" E	1.00	1.00	27.83	27.83	23.76	23.76	11-Jun-20	
70	Paiman P	Telaga Antang	Kalimantan Tengah	1° 46' 1" S	112° 36' 28" E	1.00	1.00	27.83	27.83	21.76	21.76	11-Jun-20	
71	Paiman P	Telaga Antang	Kalimantan Tengah	1° 46' 1" S	112° 38' 0" E	1.35	1.35	37.53	27.83	31.69	23.50	11-Jun-20	
72	Paiman P	Telaga Antang	Kalimantan Tengah	1° 46' 0" S	112° 37' 42" E	1.74	1.74	48.35	27.83	40.54	23.33	11-Jun-20	
73	Lamirin	Telaga Antang	Kalimantan Tengah	1° 45' 4" S	112° 36' 44" E	1.50	1.50	43.36	28.91	41.50	27.67	11-Jun-20	
74	Lamirin	Telaga Antang	Kalimantan Tengah	1° 45' 5" S	112° 36' 42" E	0.20	0.20	5.83	28.91	5.83	28.91	11-Jun-20	
75	Lamirin	Telaga Antang	Kalimantan Tengah	1° 45' 5" S	112° 36' 43" E	0.23	0.23	6.71	28.91	6.71	28.91	11-Jun-20	
76	Lamirin	Telaga Antang	Kalimantan Tengah	1° 45' 4" S	112° 36' 45" E	1.00	1.00	28.91	28.91	28.00	28.00	11-Jun-20	

No.	Smallholder Name	Location		Coordinate		Area (Ha)		Actual FFB production (MT/Year)	Yield (MT/Ha/Year)	Projection FFB Production (MT/Year)	Yield Projection (MT/Ha/Year)	Date of Joining	Date of Leaving
				Latitude (S)	Longitude (E)	Total Area	Production Area						
77	Lamirin	Telaga Antang	Kalimantan Tengah	1° 47' 1" S	112° 38' 26" E	1.00	1.00	28.91	28.91	28.00	28.00	11-Jun-20	
78	Lamirin	Telaga Antang	Kalimantan Tengah	1° 47' 1" S	112° 38' 26" E	0.90	0.90	26.02	28.91	25.30	28.11	11-Jun-20	
79	Lamirin	Telaga Antang	Kalimantan Tengah	1° 47' 1" S	112° 38' 26" E	0.90	0.90	26.02	28.91	25.30	28.11	11-Jun-20	
80	Lamirin	Telaga Antang	Kalimantan Tengah	1° 46' 4" S	112° 37' 49" E	1.00	1.00	28.91	28.91	28.00	28.00	11-Jun-20	
81	Lamirin	Telaga Antang	Kalimantan Tengah	1° 46' 4" S	112° 38' 3" E	1.00	1.00	28.91	28.91	28.00	28.00	11-Jun-20	
82	Estu Wulan Ningsih	Telaga Antang	Kalimantan Tengah	1° 43' 3" S	112° 39' 35" E	1.75	1.75	25.45	14.54	20.97	11.98	11-Jun-20	
83	Estu Wulan Ningsih	Telaga Antang	Kalimantan Tengah	1° 43' 2" S	112° 39' 41" E	2.00	2.00	29.10	14.54	23.84	11.91	11-Jun-20	
84	Estu Wulan Ningsih	Telaga Antang	Kalimantan Tengah	1° 43' 3" S	112° 39' 49" E	2.65	2.65	38.54	14.54	31.25	11.79	11-Jun-20	
85	Estu Wulan Ningsih	Telaga Antang	Kalimantan Tengah	1° 43' 4" S	112° 40' 10" E	1.02	1.02	14.82	14.54	12.63	12.39	11-Jun-20	
86	Estu Wulan Ningsih	Telaga Antang	Kalimantan Tengah	1° 43' 4" S	112° 40' 10" E	1.02	1.02	14.82	14.54	12.63	12.39	11-Jun-20	
87	Estu Wulan Ningsih	Telaga Antang	Kalimantan Tengah	1° 43' 4" S	112° 40' 13" E	2.00	2.00	29.08	14.54	23.83	11.91	11-Jun-20	
88	Jumadi	Telaga Antang	Kalimantan Tengah	1° 45' 5" S	112° 37' 16" E	0.75	0.75	22.48	29.97	19.10	25.46	11-Jun-20	
89	Jumadi	Telaga Antang	Kalimantan Tengah	1° 45' 3" S	112° 37' 25" E	0.98	0.98	29.37	29.97	24.65	25.15	11-Jun-20	
90	Jumadi	Telaga Antang	Kalimantan Tengah	1° 45' 3" S	112° 37' 23" E	1.00	1.00	29.97	29.97	25.13	25.13	11-Jun-20	
91	Purnomo	Telaga Antang	Kalimantan Tengah	1° 44' 3" S	112° 37' 29" E	0.98	0.98	22.02	22.46	23.92	24.41	11-Jun-20	
92	Purnomo	Telaga Antang	Kalimantan Tengah	1° 47' 3" S	112° 33' 50" E	1.18	1.18	26.51	22.46	28.60	24.24	11-Jun-20	
93	Purnomo	Telaga Antang	Kalimantan Tengah	1° 46' 4" S	112° 38' 21" E	1.22	1.22	27.41	22.46	29.54	24.21	11-Jun-20	
94	Titin - Purnomo	Telaga Antang	Kalimantan Tengah	1° 47' 2" S	112° 33' 30" E	1.00	1.00	22.46	22.46	24.39	24.39	11-Jun-20	
95	Subandi	Telaga Antang	Kalimantan Tengah	1° 44' 2" S	112° 37' 38" E	1.03	1.03	28.71	27.88	28.71	27.88	11-Jun-20	
96	Subandi	Telaga Antang	Kalimantan Tengah	1° 44' 4" S	112° 37' 26" E	1.30	1.30	36.24	27.88	36.24	27.88	11-Jun-20	
97	Samiun	Telaga Antang	Kalimantan Tengah	1° 44' 2" S	112° 38' 29" E	0.85	0.85	18.55	21.73	20.57	24.10	11-Jun-20	
98	Samiun	Telaga Antang	Kalimantan Tengah	1° 45' 1" S	112° 37' 25" E	1.00	1.00	21.73	21.73	23.93	23.93	11-Jun-20	
99	Joko Siswanto	Telaga Antang	Kalimantan Tengah	1° 44' 2" S	112° 38' 30" E	1.20	1.20	22.88	19.07	23.01	19.17	11-Jun-20	
100	Joko Siswanto	Telaga Antang	Kalimantan Tengah	1° 45' 9" S	112° 37' 31" E	0.82	0.82	15.50	18.91	16.04	19.56	11-Jun-20	
101	Margono	Telaga Antang	Kalimantan Tengah	1° 44' 3" S	112° 38' 37" E	2.00	2.00	40.87	20.44	38.65	19.33	11-Jun-20	
102	Sugiyanto	Telaga Antang	Kalimantan Tengah	1° 45' 1" S	112° 38' 32" E	1.41	1.41	26.28	18.68	27.93	19.86	11-Jun-20	

No.	Smallholder Name	Location		Coordinate		Area (Ha)		Actual FFB production (MT/Year)	Yield (MT/Ha/ Year)	Projection FFB Production (MT/Year)	Yield Projection (MT/Ha/ Year)	Date of Joining	Date of Leaving
				Latitude (S)	Longitude (E)	Total Area	Production Area						
103	Amri Mustaqim	Telaga Antang	Kalimantan Tengah	1° 47' 1" S	112° 38' 56" E	1.00	1.00	24.48	24.48	24.47	24.47	11-Jun-20	
104	Amri Mustaqim	Telaga Antang	Kalimantan Tengah	1° 47' 1" S	112° 38' 57" E	2.00	2.00	48.96	24.48	47.94	23.97	11-Jun-20	
105	Parlan	Telaga Antang	Kalimantan Tengah	1° 47' 1" S	112° 38' 4" E	1.11	1.11	28.12	25.40	27.94	25.24	11-Jun-20	
106	Parlan	Telaga Antang	Kalimantan Tengah	1° 47' 2" S	112° 38' 31" E	1.63	1.63	41.27	25.40	40.54	24.95	11-Jun-20	
107	Suyanto	Telaga Antang	Kalimantan Tengah	1° 47' 2" S	112° 38' 27" E	1.00	1.00	18.03	18.03	22.69	22.69	11-Jun-20	
108	Suyanto	Telaga Antang	Kalimantan Tengah	1° 47' 2" S	112° 38' 20" E	1.00	1.00	18.03	18.03	22.69	22.69	11-Jun-20	
109	Suyanto	Telaga Antang	Kalimantan Tengah	1° 47' 2" S	112° 38' 20" E	0.70	0.70	12.62	18.03	16.18	23.12	11-Jun-20	
110	Suyanto	Telaga Antang	Kalimantan Tengah	1° 47' 2" S	112° 38' 30" E	1.71	1.71	30.83	18.03	38.09	22.28	11-Jun-20	
111	Suyanto	Telaga Antang	Kalimantan Tengah	1° 47' 2" S	112° 38' 24" E	2.00	2.00	36.07	18.03	44.41	22.19	11-Jun-20	
112	Sulaeman	Telaga Antang	Kalimantan Tengah	1° 47' 2" S	112° 38' 28" E	1.00	1.00	17.48	17.48	15.86	15.86	11-Jun-20	
113	Denny Febriyadi	Telaga Antang	Kalimantan Tengah	1° 47' 2" S	112° 38' 25" E	2.00	2.00	48.96	24.48	49.31	24.66	11-Jun-20	
114	Denny Febriyadi	Telaga Antang	Kalimantan Tengah	1° 45' 3" S	112° 36' 54" E	2.00	2.00	48.96	24.48	49.31	24.66	11-Jun-20	
115	Marsudi	Telaga Antang	Kalimantan Tengah	1° 47' 3" S	112° 38' 17" E	1.78	1.78	37.58	21.11	39.00	21.91	11-Jun-20	
116	Marsudi	Telaga Antang	Kalimantan Tengah	1° 47' 2" S	112° 38' 21" E	2.00	2.00	42.23	21.11	43.69	21.85	11-Jun-20	
117	Sri Haryuni	Telaga Antang	Kalimantan Tengah	1° 47' 1" S	112° 38' 21" E	1.60	1.60	33.78	21.11	35.15	21.97	11-Jun-20	
118	Suharno	Telaga Antang	Kalimantan Tengah	1° 46' 9" S	112° 38' 15" E	1.00	1.00	28.80	28.80	26.32	26.32	11-Jun-20	
119	Suharno	Telaga Antang	Kalimantan Tengah	1° 47' 1" S	112° 38' 17" E	1.00	1.00	26.23	26.23	23.25	23.25	11-Jun-20	
120	Sudaryo	Telaga Antang	Kalimantan Tengah	1° 46' 2" S	112° 38' 55" E	1.00	1.00	26.78	26.78	29.07	29.07	11-Jun-20	
121	Sudaryo	Telaga Antang	Kalimantan Tengah	1° 46' 3" S	112° 38' 13" E	1.00	1.00	26.78	26.78	29.07	29.07	11-Jun-20	
122	Slamet Turyono	Telaga Antang	Kalimantan Tengah	1° 46' 2" S	112° 38' 26" E	1.00	1.00	17.92	17.92	17.23	17.23	11-Jun-20	
123	Slamet Turyono	Telaga Antang	Kalimantan Tengah	1° 46' 3" S	112° 38' 3" E	1.00	1.00	17.92	17.92	17.23	17.23	11-Jun-20	
124	Kartono-Saeran	Telaga Antang	Kalimantan Tengah	1° 46' 1" S	112° 38' 14" E	1.00	1.00	30.29	30.29	27.49	27.49	11-Jun-20	
125	Sudar-Tugiyo	Telaga Antang	Kalimantan Tengah	1° 46' 9" S	112° 38' 12" E	1.00	1.00	21.80	21.80	24.50	24.50	11-Jun-20	
126	Tugiyo	Telaga Antang	Kalimantan Tengah	1° 45' 3" S	112° 37' 18" E	1.00	1.00	21.80	21.80	24.50	24.50	11-Jun-20	
127	Tugiyo	Telaga Antang	Kalimantan Tengah	1° 46' 3" S	112° 38' 50" E	1.00	1.00	21.80	21.80	24.50	24.50	11-Jun-20	
128	Agus setiawan (Jumio)	Telaga Antang	Kalimantan Tengah	1° 46' 1" S	112° 38' 34" E	1.00	1.00	26.06	26.06	27.01	27.01	11-Jun-20	

No.	Smallholder Name	Location		Coordinate		Area (Ha)		Actual FFB production (MT/Year)	Yield (MT/Ha/Year)	Projection FFB Production (MT/Year)	Yield Projection (MT/Ha/Year)	Date of Joining	Date of Leaving
				Latitude (S)	Longitude (E)	Total Area	Production Area						
129	Agus setiawan (Jumio)	Telaga Antang	Kalimantan Tengah	1° 45' 3" S	112° 37' 15" E	1.00	1.00	26.06	26.06	27.01	27.01	11-Jun-20	
130	Gito Wiyono	Telaga Antang	Kalimantan Tengah	1° 46' 3" S	112° 38' 37" E	1.00	1.00	29.20	29.20	30.53	30.53	11-Jun-20	
131	Gito Wiyono	Telaga Antang	Kalimantan Tengah	1° 46' 3" S	112° 38' 34" E	1.35	1.35	38.84	28.77	40.86	30.27	11-Jun-20	
132	Sutarno	Telaga Antang	Kalimantan Tengah	1° 46' 2" S	112° 38' 42" E	0.98	0.98	24.79	25.30	29.33	29.93	11-Jun-20	
133	Sutarno	Telaga Antang	Kalimantan Tengah	1° 46' 2" S	112° 38' 46" E	1.00	1.00	25.25	25.25	29.91	29.91	11-Jun-20	
134	Paiman - Sutarno	Telaga Antang	Kalimantan Tengah	1° 45' 4" S	112° 37' 14" E	0.75	0.75	19.00	14.25	19.00	14.25	11-Jun-20	
135	Paiman - Sutarno	Telaga Antang	Kalimantan Tengah	1° 46' 1" S	112° 38' 3" E	0.75	0.75	18.32	13.47	18.32	18.32	11-Jun-20	
136	Sugito	Telaga Antang	Kalimantan Tengah	1° 46' 3" S	112° 38' 58" E	1.00	1.00	17.66	17.66	15.85	15.85	11-Jun-20	
137	Parjono	Telaga Antang	Kalimantan Tengah	1° 45' 3" S	112° 37' 28" E	0.66	0.66	16.93	25.73	22.74	25.00	11-Jun-20	
138	Sutrisno	Telaga Antang	Kalimantan Tengah	1° 45' 3" S	112° 37' 21" E	1.00	1.00	29.53	29.53	25.54	25.54	11-Jun-20	
139	Sutrisno	Telaga Antang	Kalimantan Tengah	1° 45' 3" S	112° 37' 20" E	0.41	0.41	11.96	29.53	10.94	27.01	11-Jun-20	
140	Budi Sugiarto	Telaga Antang	Kalimantan Tengah	1° 45' 1" S	112° 37' 28" E	2.00	2.00	51.17	25.58	52.18	26.09	11-Jun-20	
141	Budi Sugiarto	Telaga Antang	Kalimantan Tengah	1° 45' 3" S	112° 37' 31" E	1.32	1.32	33.77	25.58	34.78	26.35	11-Jun-20	
142	Budi Sugiarto	Telaga Antang	Kalimantan Tengah	1° 44' 1" S	112° 37' 27" E	1.04	1.04	26.61	25.58	27.61	26.55	11-Jun-20	
143	Surati Nursalim	Telaga Antang	Kalimantan Tengah	1° 45' 4" S	112° 37' 50" E	2.09	2.09	50.96	24.38	42.58	20.37	11-Jun-20	
144	Surati Nursalim	Telaga Antang	Kalimantan Tengah	1° 45' 3" S	112° 37' 53" E	1.57	1.57	38.28	24.38	32.23	20.53	11-Jun-20	
145	Surati Nursalim	Telaga Antang	Kalimantan Tengah	1° 44' 5" S	112° 37' 32" E	2.00	2.00	48.76	24.38	40.79	20.39	11-Jun-20	
146	Kuswanto	Tualan Hulu	Kalimantan Tengah	1° 46' 2" S	112° 39' 18" E	2.00	2.00	47.70	23.85	46.32	23.16	11-Jun-20	
147	Siti Misbah	Telaga Antang	Kalimantan Tengah	1° 44' 5" S	112° 38' 10" E	2.00	2.00	47.70	23.85	46.32	23.16	11-Jun-20	
148	Siti Misbah	Telaga Antang	Kalimantan Tengah	1° 44' 5" S	112° 38' 6" E	1.70	1.70	40.54	23.85	39.52	23.25	11-Jun-20	
149	Kiswanto	Tualan Hulu	Kalimantan Tengah	1° 46' 2" S	112° 39' 22" E	2.00	2.00	37.22	18.61	39.69	19.85	11-Jun-20	
150	Suwanti	Tualan Hulu	Kalimantan Tengah	1° 46' 2" S	112° 39' 32" E	2.00	2.00	37.22	18.61	39.69	19.85	11-Jun-20	
151	Suwanti	Tualan Hulu	Kalimantan Tengah	1° 46' 2" S	112° 39' 25" E	1.40	1.40	26.05	18.61	28.09	20.06	11-Jun-20	
152	Suhardi	Telaga Antang	Kalimantan Tengah	1° 45' 5" S	112° 37' 2" E	1.00	1.00	31.03	31.03	28.00	28.00	11-Jun-20	
153	Suhardi	Telaga Antang	Kalimantan Tengah	1° 44' 5" S	112° 38' 19" E	0.70	0.70	21.72	15.63	21.72	15.63	11-Jun-20	
154	Sapardi	Telaga Antang	Kalimantan Tengah	1° 44' 3" S	112° 36' 12" E	2.70	2.70	63.57	23.54	58.20	21.56	11-Jun-20	

No.	Smallholder Name	Location		Coordinate		Area (Ha)		Actual FFB production (MT/Year)	Yield (MT/Ha/ Year)	Projection FFB Production (MT/Year)	Yield Projection (MT/Ha/ Year)	Date of Joining	Date of Leaving
				Latitude (S)	Longitude (E)	Total Area	Production Area						
155	Suradi	Telaga Antang	Kalimantan Tengah	1° 45' 4" S	112° 37' 2" E	1.00	1.00	8.44	8.44	1.00	1.00	11-Jun-20	
156	Suradi	Tualan Hulu	Kalimantan Tengah	1° 46' 1" S	112° 39' 22" E	1.50	1.50	28.90	19.27	30.03	20.02	11-Jun-20	
157	Suratmiyati	Telaga Antang	Kalimantan Tengah	1° 45' 4" S	112° 35' 19" E	1.71	1.71	43.28	25.31	37.66	22.02	11-Jun-20	
158	Dasimin	Telaga Antang	Kalimantan Tengah	1° 44' 3" S	112° 37' 22" E	1.05	1.05	26.07	24.82	25.98	24.75	11-Jun-20	
159	Dasimin	Telaga Antang	Kalimantan Tengah	1° 44' 1" S	112° 38' 11" E	1.50	1.50	37.24	24.82	39.48	26.32	11-Jun-20	
160	Dasimin	Telaga Antang	Kalimantan Tengah	1° 44' 2" S	112° 38' 8" E	1.50	1.50	37.24	24.82	39.48	26.32	11-Jun-20	
161	Dasimin	Telaga Antang	Kalimantan Tengah	1° 44' 2" S	112° 38' 12" E	1.20	1.20	29.79	24.82	29.40	24.50	11-Jun-20	
162	Wiyardi	Telaga Antang	Kalimantan Tengah	1° 44' 2" S	112° 40' 1" E	2.00	2.00	42.36	21.18	38.14	19.07	11-Jun-20	
163	Syahno	Tualan Hulu	Kalimantan Tengah	1° 46' 1" S	112° 39' 18" E	2.70	2.70	60.51	22.41	54.82	20.31	11-Jun-20	
164	Syahno	Telaga Antang	Kalimantan Tengah	1° 46' 7" S	112° 36' 59" E	1.00	1.00	27.04	27.04	30.09	27.00	11-Jun-20	
165	Saptono(TRIMO)	Tualan Hulu	Kalimantan Tengah	1° 46' 2" S	112° 39' 23" E	2.00	2.00	47.18	23.59	43.45	21.72	11-Jun-20	
166	Saptono(TRIMO)	Telaga Antang	Kalimantan Tengah	1° 44' 5" S	112° 38' 19" E	1.00	1.00	29.15	29.15	27.67	27.67	11-Jun-20	
167	Saptono(TRIMO)	Tualan Hulu	Kalimantan Tengah	1° 46' 1" S	112° 39' 26" E	1.00	1.00	-	-	12.00	12.00	11-Jun-20	
168	Paing	Telaga Antang	Kalimantan Tengah	1° 45' 3" S	112° 37' 42" E	2.00	2.00	54.58	27.29	49.40	24.70	11-Jun-20	
169	Kardi	Telaga Antang	Kalimantan Tengah	1° 44' 1" S	112° 37' 23" E	2.00	2.00	50.90	25.45	53.25	26.62	11-Jun-20	
170	Kardi	Telaga Antang	Kalimantan Tengah	1° 44' 1" S	112° 37' 21" E	2.10	2.10	53.45	25.45	55.86	26.60	11-Jun-20	
171	Ruwadi	Telaga Antang	Kalimantan Tengah	1° 44' 2" S	112° 37' 7" E	2.00	2.00	51.15	25.58	47.68	23.84	11-Jun-20	
172	Siswadi	Telaga Antang	Kalimantan Tengah	1° 44' 1" S	112° 37' 5" E	1.20	1.20	30.69	25.58	29.01	24.17	11-Jun-20	
173	Shokibul Arifin	Telaga Antang	Kalimantan Tengah	1° 48' 4" S	112° 38' 24" E	0.75	0.75	22.34	29.79	20.73	27.64	11-Jun-20	
174	Suyatno	Telaga Antang	Kalimantan Tengah	1° 48' 4" S	112° 38' 34" E	0.99	0.99	25.66	25.92	24.98	25.23	11-Jun-20	
175	Suyatno	Telaga Antang	Kalimantan Tengah	1° 48' 5" S	112° 38' 29" E	2.21	2.21	57.16	25.92	54.40	24.67	11-Jun-20	
176	Suyatno	Telaga Antang	Kalimantan Tengah	1° 48' 5" S	112° 38' 19" E	0.75	0.75	19.44	25.92	19.16	25.55	11-Jun-20	
177	Sumarmun	Telaga Antang	Kalimantan Tengah	1° 48' 5" S	112° 38' 31" E	2.21	2.21	51.92	23.55	43.87	19.90	11-Jun-20	
178	Elda Erdayani	Telaga Antang	Kalimantan Tengah	1° 48' 5" S	112° 38' 26" E	1.50	1.50	-	-	12.00	8.00	11-Jun-20	
179	Elda Erdayani	Telaga Antang	Kalimantan Tengah	1° 48' 5" S	112° 38' 22" E	1.00	1.00	21.42	21.40	20.18	20.16	11-Jun-20	
180	Sugito	Telaga Antang	Kalimantan Tengah	1° 49' 0" S	112° 38' 26" E	1.71	1.71	50.92	29.78	51.71	30.24	11-Jun-20	

No.	Smallholder Name	Location		Coordinate		Area (Ha)		Actual FFB production (MT/Year)	Yield (MT/Ha/Year)	Projection FFB Production (MT/Year)	Yield Projection (MT/Ha/Year)	Date of Joining	Date of Leaving
				Latitude (S)	Longitude (E)	Total Area	Production Area						
181	Sugito	Telaga Antang	Kalimantan Tengah	1° 49' 5" S	112° 38' 22" E	1.01	1.01	30.02	29.78	30.89	30.65	11-Jun-20	
182	Sugito	Telaga Antang	Kalimantan Tengah	1° 49' 2" S	112° 38' 21" E	2.01	2.01	39.87	19.86	31.20	15.55	11-Jun-20	
183	Sugito	Telaga Antang	Kalimantan Tengah	1° 48' 8" S	112° 33' 53" E	1.10	1.10	21.85	19.86	17.55	15.96	11-Jun-20	
184	Sugito	Telaga Antang	Kalimantan Tengah	1° 48' 5" S	112° 38' 15" E	1.86	1.86	36.99	19.86	29.02	15.59	11-Jun-20	
185	Giman	Telaga Antang	Kalimantan Tengah	1° 48' 5" S	112° 38' 11" E	1.50	1.50	42.13	28.08	36.95	24.63	11-Jun-20	
186	Giman	Telaga Antang	Kalimantan Tengah	1° 48' 5" S	112° 38' 22" E	0.75	0.75	21.06	28.08	18.98	25.30	11-Jun-20	
187	Khayatun	Telaga Antang	Kalimantan Tengah	1° 48' 5" S	112° 38' 23" E	2.00	2.00	56.17	28.08	48.94	24.47	11-Jun-20	
188	Muchtarom	Telaga Antang	Kalimantan Tengah	1° 48' 5" S	112° 38' 17" E	0.75	0.75	28.61	21.45	34.39	20.00	11-Jun-20	
189	Aris Prayitno	Telaga Antang	Kalimantan Tengah	1° 49' 2" S	112° 38' 17" E	2.09	2.09	64.56	30.83	50.00	23.93	11-Jun-20	
190	Yanus	Telaga Antang	Kalimantan Tengah	1° 44' 5" S	112° 35'36" E	1.60	1.60	29.19	18.24	25.65	16.03	11-Jun-20	
191	Yanus	Telaga Antang	Kalimantan Tengah	1° 44' 4" S	112° 35'27" E	2.12	2.12	38.67	18.24	33.66	15.88	11-Jun-20	
192	Yanus	Telaga Antang	Kalimantan Tengah	1° 45' 0" S	112° 35'33" E	0.40	0.40	7.30	18.24	7.16	17.91	11-Jun-20	
193	Yanus	Telaga Antang	Kalimantan Tengah	1° 46' 1" S	112° 35'48" E	2.50	2.50	45.60	18.24	39.52	15.81	11-Jun-20	
194	Yanus	Telaga Antang	Kalimantan Tengah	1° 44' 5" S	112° 35'31" E	2.22	2.22	40.49	18.24	35.20	15.86	11-Jun-20	
195	Dedie	Telaga Antang	Kalimantan Tengah	1° 45' 4" S	112° 36' 0" E	1.20	1.20	42.57	35.40	33.55	27.90	11-Jun-20	
196	Dedie	Telaga Antang	Kalimantan Tengah	1° 44' 4" S	112° 35'31" E	1.71	1.71	-	-	12.00	12.00	11-Jun-20	
197	Rait Yanus	Telaga Antang	Kalimantan Tengah	1° 45' 4" S	112° 35'59" E	1.27	1.27	38.73	30.51	33.90	26.71	11-Jun-20	
198	Rait Yanus	Telaga Antang	Kalimantan Tengah	1° 44' 4" S	112° 35'26" E	2.16	2.16	32.21	14.91	18.90	8.75	11-Jun-20	
199	Yakob Mulyadie	Telaga Antang	Kalimantan Tengah	1° 47' 1" S	112° 35'26" E	3.78	3.78	69.14	18.31	56.06	14.84	11-Jun-20	
200	Siswono	Telaga Antang	Kalimantan Tengah	01° 48' 05.77" S	112° 35' 39.27" E	1.77	1.77	-	-	31.98	18.07	02-Jan-22	
201	Siswono	Telaga Antang	Kalimantan Tengah	01° 50' 26.12" S	112° 35' 44.25" E	3.74	3.74	-	-	66.46	17.77	02-Jan-22	
202	Siswono	Telaga Antang	Kalimantan Tengah	01° 48' 42.19" S	112° 35' 56.33" E	3.71	3.71	-	-	65.94	17.77	02-Jan-22	
203	Siswono	Telaga Antang	Kalimantan Tengah	01° 47' 37.23" S	112° 36' 35.88" E	1.23	1.23	-	-	22.53	18.32	02-Jan-22	
204	Siswono	Telaga Antang	Kalimantan Tengah	01° 47' 15.86" S	112° 39' 01.36" E	3.09	3.09	-	-	55.09	17.83	02-Jan-22	
205	Siswono	Telaga Antang	Kalimantan Tengah	01° 47' 33.71" S	112° 36' 37.19" E	1.93	1.93	-	-	34.78	18.02	02-Jan-22	
206	Siswono	Telaga Antang	Kalimantan Tengah	01° 48' 04.55" S	112° 36' 01.07" E	1.71	1.71	-	-	30.93	18.09	02-Jan-22	

No.	Smallholder Name	Location		Coordinate		Area (Ha)		Actual FFB production (MT/Year)	Yield (MT/Ha/ Year)	Projection FFB Production (MT/Year)	Yield Projection (MT/Ha/ Year)	Date of Joining	Date of Leaving
				Latitude (S)	Longitude (E)	Total Area	Production Area						
207	Siswono	Telaga Antang	Kalimantan Tengah	01° 47' 42.39" S	112° 35' 27.90" E	2.31	2.31	-	-	41.43	17.94	02-Jan-22	
208	Siswono	Telaga Antang	Kalimantan Tengah	01° 47' 37.59" S	112° 35' 20.13" E	1.00	1.00	-	-	18.50	18.50	02-Jan-22	
209	Slamet purwanto	Telaga Antang	Kalimantan Tengah	01° 48' 12.74" S	112° 35' 43.96" E	2.00	2.00	-	-	49.72	24.86	02-Jan-22	
210	Slamet purwanto	Telaga Antang	Kalimantan Tengah	01° 48' 17.72" S	112° 35' 48.80" E	1.80	1.80	-	-	44.85	24.92	02-Jan-22	
211	Suyatno	Telaga Antang	Kalimantan Tengah	01° 48' 19.50" S	112° 35' 45.35" E	2.06	2.06	-	-	60.79	29.51	02-Jan-22	
212	Suyatno	Telaga Antang	Kalimantan Tengah	01° 48' 35.59" S	112° 35' 39.74" E	1.89	1.89	-	-	55.86	29.55	02-Jan-22	
213	Suyatno (Ika Dwi Fitriani)	Telaga Antang	Kalimantan Tengah	01° 50' 24.09" S	112° 35' 48.78" E	1.97	1.97	-	-	58.18	29.53	02-Jan-22	
214	Rini wahyuni	Telaga Antang	Kalimantan Tengah	01° 48' 34.93" S	112° 35' 51.08" E	1.31	1.31	-	-	35.67	27.23	02-Jan-22	
215	Rini wahyuni	Telaga Antang	Kalimantan Tengah	01° 48' 35.79" S	112° 35' 46.53" E	0.97	0.97	-	-	26.67	27.49	02-Jan-22	
216	Rini wahyuni	Telaga Antang	Kalimantan Tengah	01° 48' 31.14" S	112° 35' 47.41" E	1.20	1.20	-	-	32.58	27.15	02-Jan-22	
217	Marlan	Telaga Antang	Kalimantan Tengah	01° 49' 57.56" S	112° 35' 53.33" E	0.68	0.68	-	-	20.00	13.60	02-Jan-22	
218	Marlan	Telaga Antang	Kalimantan Tengah	01° 48' 03.99" S	112° 35' 34.24" E	4.28	4.28	-	-	60.00	14.01	02-Jan-22	
219	Katini	Telaga Antang	Kalimantan Tengah	01° 49' 52.30" S	112° 35' 56.04" E	1.27	1.27	-	-	25.18	19.83	02-Jan-22	
220	Katini (Slamet Purwanto)	Telaga Antang	Kalimantan Tengah	01° 48' 09.09" S	112° 35' 39.42" E	1.97	1.97	-	-	38.51	19.55	02-Jan-22	
221	Katini	Telaga Antang	Kalimantan Tengah	01° 47' 36.87" S	112° 35' 16.33" E	2.00	2.00	-	-	30.00	15.00	02-Jan-22	
222	Katini	Telaga Antang	Kalimantan Tengah	01° 49' 49.36" S	112° 35' 59.73" E	1.99	1.99	-	-	30.00	15.07	02-Jan-22	
Total						323.78	323.78	6,614.93	20.43	7,303.44	22.56		