

***Roundtable on Sustainable Palm Oil Certification
R S P O***

[✓] Milestone-B

Name of Management Organisation : **Koperasi Produsen Perkebunan Persada Engkersik Lestari**
 Plantation Name : **Koperasi Produsen Perkebunan Persada Engkersik Lestari**
 Location : **Village of Engkersik and Setawar, Sub District of Sekadau Hilir, District of Sekadau, Province of Kalimantan Barat, Indonesia**
 Certificate Code : **MUTU-RSPO/182**
 Date of Certificate Issue : **24 March 2023** Date of License Issue : **24 March 2023**
 Date of Certificate Expiry : **23 March 2028** Date of License Expiry : **23 March 2024**

Assessment	Assessment Date	PT Mutuagung Lestari Auditor	Reviewed by	Approved by
IC	31 October to 03 November 2022	Hasiholan Sihombing (Lead Auditor), Sentot Adi Subandono dan Sabiah Dhiningtyas Utami	Harso Yuli Antena	Leonada

Assessment	Approved by MUTUAGUNG LESTARI on:
IC	24 March 2023

TABLE OF CONTENT

FIGURE

Figure 1. Location Map of Koperasi Produsen Perkebunan Persada Engkersik Lestari	1
Figure 2. Operational Map of Koperasi Produsen Perkebunan Persada Engkersik Lestari	2
Abbreviations Used	3

1.0 SCOPE of the CERTIFICATION ASSESSMENT	4
1.1 Assessment Standard Used	4
1.2 Organisation Information	4
1.3 Type of Assessment	4
1.4 Location of Plantations	4
1.5 Description of Area Statement	4
1.6 Planting Year and Cycles	4
1.7 Description of Supply Base	5
1.8 Tonnage Product	5
1.9 Other Certification	6
2.0 ASSESSMENT PROCESS	7
2.1 Assessment Team	7
2.2 Assessment Methodology, Assessment Process and Locations of Assessment	8
2.3 Stakeholder Consultation and Stakeholders Contacted	8
2.4 Determining Next Assessment	8
3.0 ASSESSMENT FINDINGS	9
3.1 Summary of Assessment Report of the RSPO Certification	9
3.2 Conformity Checklist of Certificate and Logo Use	28
3.3 Identification of Findings, Corrective Actions, Observations, Opportunity for Improvement and Noteworthy Positive Components	29
3.4 Summary of Arising Issues from Public and Auditor Verification	40
4.0 CERTIFIED ORGANISATION'S ACKNOWLEDGEMENT OF INTERNAL RESPONSIBILITY	41
4.1 Formal Signing of Assessment Findings	41
APPENDICES	
1. List of Stakeholders Contacted in the RSPO Certification Process	42
2. Assessment Program	43
3. Smallholders Data	44

Figure 1. Location Map of Koperasi Produsen Perkebunan Persada Engkersik Lestari

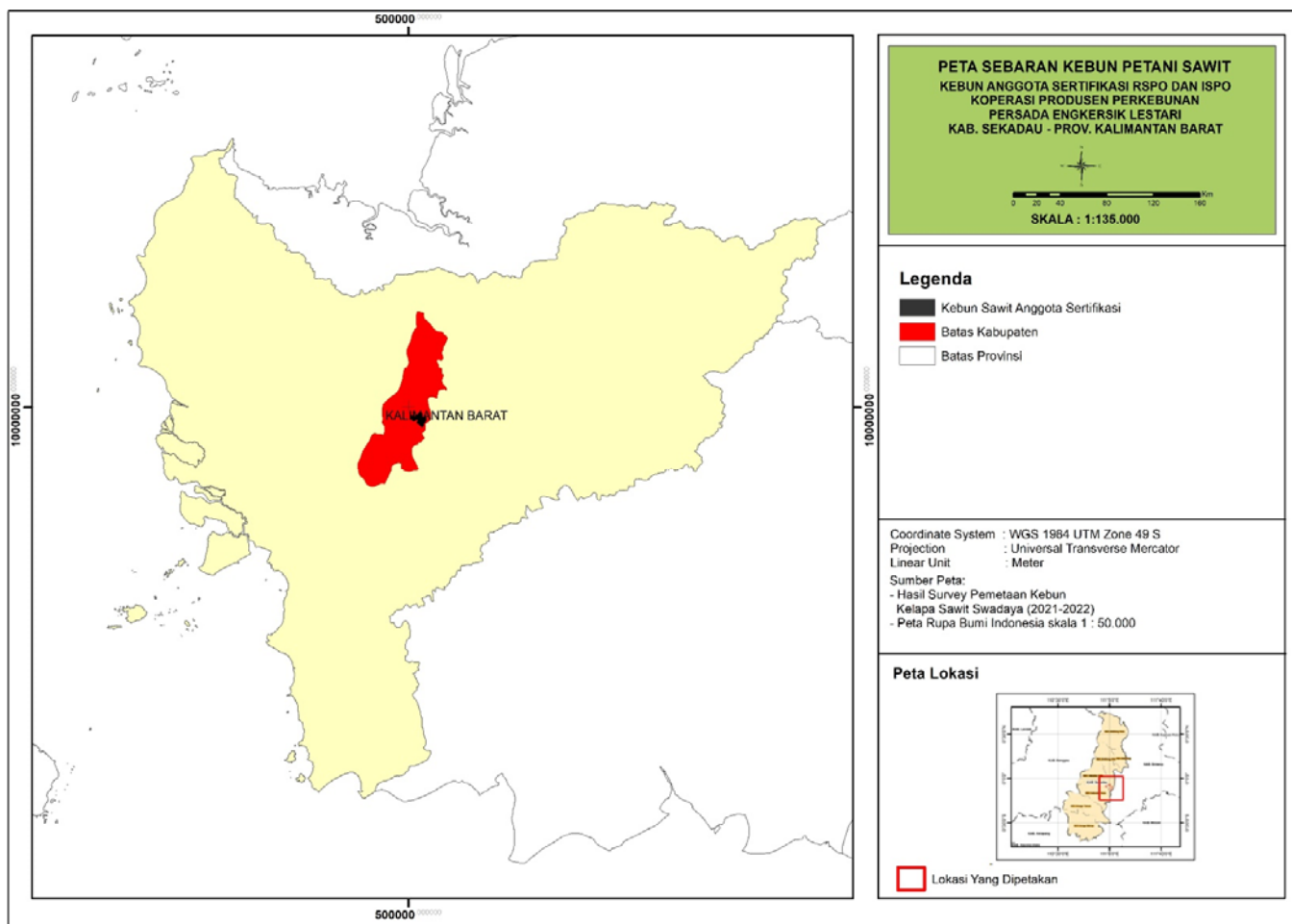
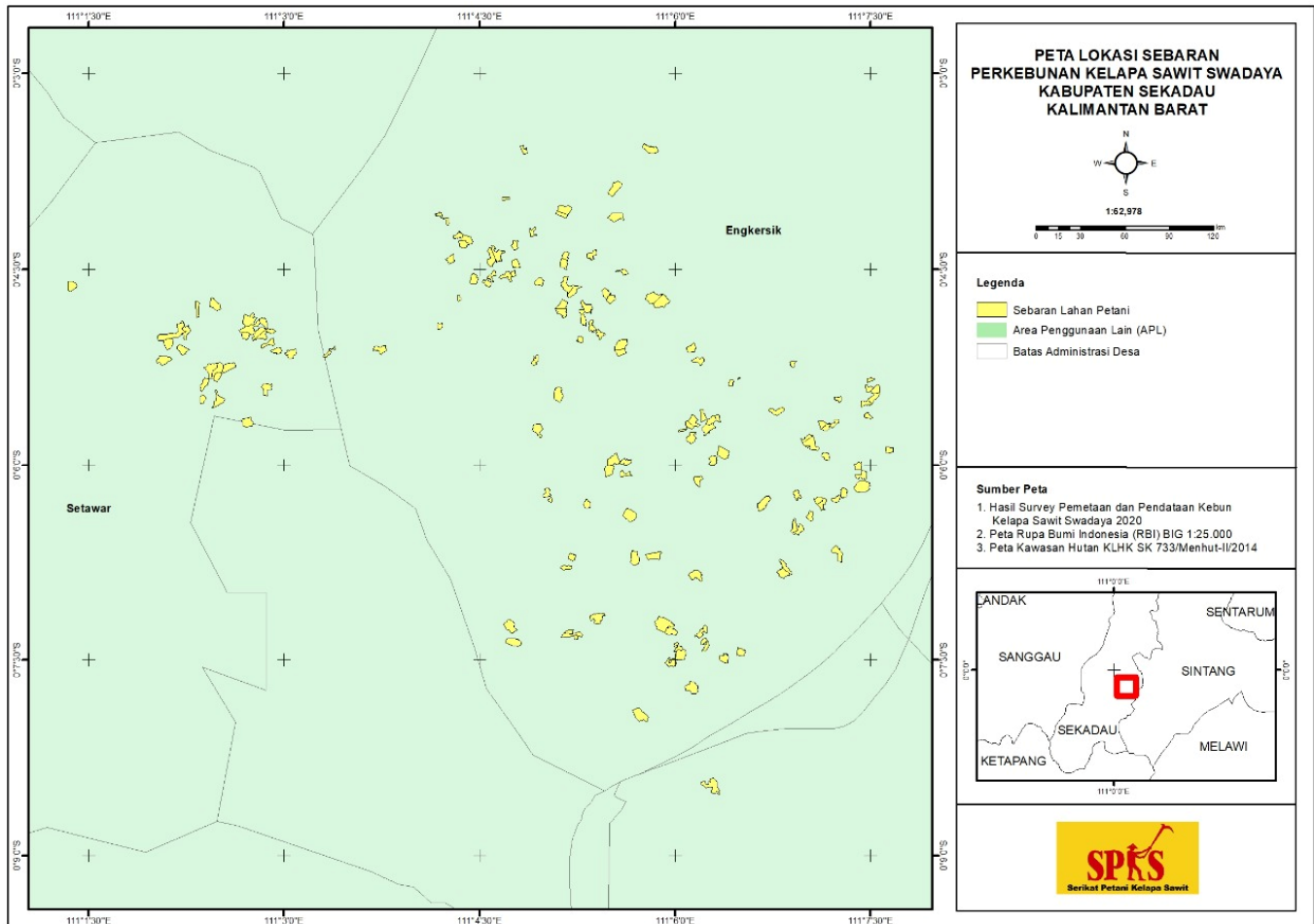


Figure 2. Operational Map of Koperasi Produsen Perkebunan Persada Engkersik Lestari



Abbreviations Used

AD/ART	:	<i>Anggaran Dasar/Anggaran Rumah Tangga</i>
BMP	:	Best Management Practice
FFB	:	Fresh Fruit Bunch
FPIC	:	Free, Prior and Informed Consent
GAP	:	Good Agricultural Practices
Ha	:	Hectare
HAM	:	<i>Hak Asasi Manusia</i>
HCV	:	High Conservation Value
ICS	:	Internal Control System
ISO	:	International Organization for Standardization
ISPO	:	Indonesian Sustainable Palm Oil
KK	:	<i>Kartu Keluarga</i> / Family Card
KPPPEL	:	Koperasi Produsen Perkebunan Persada Engkersik Lestari
KTP	:	<i>Kartu Tanda Penduduk</i> /ID Card
OHS	:	Occupational Health and Safety
PPE	:	Personal Protective Equipment
RSPO	:	Roundtable on Sustainable Palm Oil
SHM	:	<i>Sertifikat Hak Milik</i> /Free Hold Title
SKT	:	<i>Surat Kepemilikan Tanah</i> (Land Ownership Certificate)
SOP	:	Standard Operating Procedure
SPKS	:	<i>Serikat Petani Kelapa Sawit</i>
SPPL	:	<i>Surat Pernyataan Pengelolaan Lingkungan</i> (Statement of Environment Management)
STDB	:	<i>Surat Tanda Daftar Budidaya</i> /Business Permit
Walhi	:	Wahana Lingkungan Hidup Indonesia
WWF	:	World Wild Fund

1.0	SCOPE of the CERTIFICATION ASSESSMENT		
1.1	Assessment Standard Used	<ul style="list-style-type: none">RSPO Certification Systems for Principles & Criteria and RSPO Independent Smallholder Standard, Endorsed by the RSPO Board of Governors on 12 November 2020.RSPO Independent Smallholder Standard Indonesia National Interpretation for the Production of Sustainable Palm Oil 2020, Endorsed by the RSPO Board of Governors on 14 February 2022.	
1.2	Organisation Information		
1.2.1	Organisation name listed in the certificate	Koperasi Produsen Perkebunan Persada Engkersik Lestari	
1.2.2	Contact person	Yohanes Kiyai	
1.2.3	Organisation address and site address	RSPO registered organization: Engkersik Village, Sekadau Hilir Sub District, Sekadau District, Kalimantan Barat Province, Indonesia	
1.2.4	Telephone	+62 823-8875-7677	
1.2.5	Fax	-	
1.2.6	E-mail	koperasiengkersik@gmail.com	
1.2.7	Web page address	-	
1.2.8	Management Representative who completed the application for certification	Yohanes Kiyai (ICS Manager)	
1.2.9	Registered as RSPO member	1-0404-22-000-00 (4 August 2022)	
1.3	Type of Assessment		
1.3.1	Scope of Assessment and Number of Management Unit	KPPPEL, consist of 149 smallholders	
1.3.2	Type of certificate	Single	
1.4	Locations of Plantation		
1.4.1	Location of Certification Scope of Supply Base		
	Name of Smallholder Organisation	Location	<div>Coordinate</div> <div>LatitudeLongitude</div>
	Koperasi Produsen Perkebunan Persada Engkersik Lestari	Engkersik Village, Setawar Village, Sekadau Hilir Sub-District, Sekadau District, Kalimantan Barat Province, Indonesia	<div>S00° 04' 34.50"</div> <div>E111° 04' 19.56"</div>
1.5	Description of Area Statement		
1.5.1	Tenure		
	<ul style="list-style-type: none">State	- Ha	
	<ul style="list-style-type: none">Community	218.47 Ha	
1.5.2	Area Statement		
	<ul style="list-style-type: none">Total area	218.47 Ha	
	<ul style="list-style-type: none">Mature area	218.47 Ha	
1.6	Planting Year and Cycles		

1.6.1	Age profile of planting year				
	Planting Year	Hectarage (Ha)			
		Koperasi Produsen Perkebunan Persada Engkersik Lestari			
	2010	3.80			
	2012	32.30			
	2013	1.30			
	2014	46.76			
	2015	41.25			
	2016	49.80			
	2017	31.82			
2018	11.44				
TOTAL		218.47			
1.6.2	New Planting area after January 2010		218.47 Ha		
1.6.3	Planting Cycle		1 st Cycle		
1.7	Description of Supply Base				
1.7.1	Description of Certification Scope of Supply Base				
	Name of Smallholder Organisation	Total Area (Ha)	Production Area (Ha)	FFB (tonnes/year)	Yield (tonnes/ha/year)
	Koperasi Produsen Perkebunan Persada Engkersik Lestari	218.47	218.47	2,358.37	10.79
	<i>*Production data source from September 2021 – August 2022</i>				
1.8	Tonnage of Product				
1.8.1	Past Annual Claim Certified Product	Last Year Projected Certified Volume (MT)		Last Year Actual Certified Volume (MT)	
	• FFB Production	-		-	
	• CSPO Production	-		-	
	• CSPKE Production	-		-	
	• CSPKO Production	-		-	
	<i>Will be verified on ASA-1</i>				
1.8.2	Product selling				
	Tonnage of selling product		Actual selling product for last year (MT)		
	• IS-CSPO sold as RSPO Credit		-		
	• IS-CSPK sold as RSPO Credit		-		
	• IS-CSPKE sold as RSPO Credit		-		
	• FFB sold as RSPO Certified Product		-		
	• FFB sold under another scheme		-		
	• FFB sold as conventional		-		
1.8.3	Estimate Certified FFB Claim				
	Name of Smallholder Organisation	Total Area (Ha)	Production Area (Ha)	FFB (tonnes/year)	Yield (tonnes/ha/year)
	Koperasi Produsen Perkebunan Persada Engkersik Lestari	218.47	218.47	2,369.48	10.85
	<i>*Projected FFB production for 12 months of certificate</i>				
1.8.4	Estimate Certified Palm Product Claim				
	FFB Processed	CSPO	CSPKO	CSPKE	

	(tonnes/year)	Out put (tonnes)	Extraction (%)	Out put (tonnes)	Extraction (%)	Out put (tonnes)	Extraction (%)
	-	-	-	-	-	-	-
1.9	Other Certifications						
	Others			-			

2.0	ASSESSMENT PROCESS
2.1	Assessment Team
MS-B	<p>1. Hasiholan Sihombing (Lead Auditor). Indonesian citizen. Bachelor of Agriculture Majoring in Agronomy, Agriculture Faculty. He has working experienced for 7 (seven) years since 2009 as an Operational Staff in an Oil Palm Plantation Company in Indonesia. The training he has followed namely: Lead Auditor ISPO in 2016, RSPO P&C Lead Auditor Course in 2018, RSPO Supply Chain Certification Lead Auditor Course in 2020, SA 8000 Training in 2018, Quality Management Systems (ISO 9001:2015) in 2016, Environmental Management Systems (ISO 14001:2015) in 2017, OHS General Expert in 2013, OHSAS 18001:2007 in 2017, ISO 19011:2018 in 2019, ISO 17021:2011 and ISO 17065:2012 in 2016. During this audit, He assigned to verify the legal, worker welfare and SCCS aspects.</p> <p>2. Sentot Adi Subandono (Auditor). Indonesian citizens. Bachelor of Agriculture, Department of Agricultural Cultivation. He has five years of experience since 2005 as a Plantation Operations Staff and nine years as an Internal Auditor in a private oil palm plantation in Indonesia. The trainings that have been attended include the Basic Management Development Program for Oil Palm Plantations, Use of Restricted Pesticides, Best Practices for Internal Auditing, Fraud Auditing: Prevention, Detection, and Investigation, Internal Audit Operational Risk Approach, General Occupational Health and Safety Expert, ISPO Auditor Training in 2016, ISO 9001:2015, RSPO Lead Auditor Training 2020. In this audit activity, verifying the Best Management Practice, OHS and Environmental aspects.</p> <p>3. Sabiah Dhiningtyas Utami (Trainee Auditor). Indonesian citizens. Bachelor of Agriculture, Department of Agrotechnology, Padjadjaran University. She has attended ISPO Auditor Training, ISO IRCA LAC 9001, Awareness ISO 19011:2018, ISO 14001:2015, ISO 45001:2018, ISO 17021:2015, ISO 17065:2012, RSPO Awareness and participated in several IHT in the fields of employment, environment, BMP, and other aspects. Has participated in several simulations of audit activities related to the certification system for sustainable palm oil plantations with labor and social aspects. In this audit activity, verifying the worker welfare aspect under the supervision of the Lead Auditor.</p> <p>Curriculum vitae (CV) of the members and the assessment team is available at the PT Mutuagung Lestari office.</p>
2.2	Assessment Methodology, Assessment Process and Locations of Assessment
2.2.1	Figure of person days to implement assessment
MS-B	<p>Number of auditors : 2 auditors and 1 trainee auditor</p> <p>Number of days for MS-B at site : 4 days</p> <p>Number of working days for MS-B at site : 8 Working days</p>
2.2.2	Assessment Process
MS-B	<p>The assessment was conducted by measuring the sufficiency of implementation with the consistency done by the Koperasi Produsen Perkebunan Persada Engkersik Lestari to the requirements of RSPO Independent Smallholder Standard, Indonesia National Interpretation for the Production of Sustainable Palm Oil 2020, endorsed by the RSPO Board of Governors on 14 February 2022 and RSPO Certification Systems for Principles & Criteria and RSPO Independent Smallholder Standard Endorsed by the RSPO Board of Governors on 12 November 2020.</p> <p>The assessment was conducted in three methods: (1) document review, aiming to observe the sufficiency of types or substances from required documents; (2) <i>interview</i>, aiming to obtain more detailed information and cross check the information; and (3) field observation, aiming to observe directly the sufficiency of implementation on site.</p> <p>The scope of this certification activity is 149 smallholders from 2 villages with an area of 218.47 Ha consisting of 155 smallholder plots. In conducting the assessment, the auditor team uses the formula $(\sqrt{y}) \times (z)$ where based on the verification results it is stated that the level of risk is medium (z = medium risk = multiplier of 1.2) due to some geographical and socioeconomic homogeneity but it is not uniform across the Group and there is no replanting activities. Therefore, the smallholders who were sampled were 15 smallholders from 2 villages, namely Engkersik Village and Setawar Village.</p> <p>Some opportunities for improvement of the results MS-B delivered by the MUTU auditor to the management unit and the results are the subject will be verified at the next assessment phase ASA-1. All information obtained was recorded in Check List of PT Mutuagung Lestari (MUTU) and part of MS-B.</p>

	<p>The opening meeting was held on 31 October 2022. As for the participants who attended the opening meeting included the Cooperative Management, ICS, Support Team from Jakarta and other staff. Closing meeting was held on 3 November 2022, attended by the same participants as the opening meeting. The management of Koperasi Produsen Perkebunan Persada Engkersik Lestari accept all the onsite MSB audit results.</p> <p>The assessment program please find Appendix 2.</p>
2.2.3	Locations of Assessment
MS-B	<p>The sampling location consider the issue arose from the review documents and stakeholder's consultation that are fundamental and crucial. On this assessment sample locations that visited and respondent that interviewed by team auditor are:</p> <ul style="list-style-type: none"> • 4 members from Setawar Village. Field Observation and interview related to best practices, legality, environmental, and worker welfare. • 11 members from Engkersik Village. Field Observation and interview related to best practices, legality, environmental, and worker welfare.
2.3	Stakeholder Consultation and Stakeholders Contacted
2.3.1	Summary of stakeholder consultation process.
MS-B	<p>Consultation of stakeholders for Koperasi Produsen Perkebunan Persada Engkersik Lestari was held by:</p> <ul style="list-style-type: none"> • Public Notification on website RSPO and Mutu International on 24 September 2022 • Public consultation meeting with government institution on 1 -2 November 2022 • Public consultation meeting with community including land owner on 1 November 2021 • Public consultation with NGOs (by email) such as WALHI, WWF, AMAN and Sawit Watch on 24 October 2022. <p>Numbers of input from stakeholders were clarified by Koperasi Produsen Perkebunan Persada Engkersik Lestari.</p>
2.3.2	Stakeholder contacted
	Please find appendix 1
2.4	Determining Next Assessment
	The next visit (ASA-1) will be conducted eight (8) months to twelve (12) months after issuance of certificate.

3.0 ASSESSMENT FINDINGS

3.1 Summary of Assessment Report of the RSPO Certification

MUTUAGUNG LESTARI has conducted an assessment of Koperasi Produsen Perkebunan Persada Engkersik Lestari operation consisting of 149 smallholders.

During the assessment, there were six (6) Nonconformities were assigned against Major/Critical Compliance Indicators.

Further explanation of the non-conformities raised, and corrective actions taken by the company are provided in section 3.5. The company has already prepared and implemented the corrective actions that had been reviewed and accepted by Auditors in form of documentation evidence e.g. (document record/photographic). Those corrective actions taken that consist of six (6) Major non-conformities had been closed out shall be verified during next assessment.

MUTUAGUNG LESTARI found that Koperasi Produsen Perkebunan Persada Engkersik Lestari complied with the requirements of RSPO Independent Smallholder Standard, Indonesia National Interpretation for the Production of Sustainable Palm Oil 2020, endorsed by the RSPO Board of Governors on 14 February 2022 and RSPO Certification Systems for Principles & Criteria and RSPO Independent Smallholder Standard Endorsed by the RSPO Board of Governors on 12 November 2020.

Therefore MUTUAGUNG LESTARI Recommends RSPO Certification of compliance is issued.

3.1.1 The system requirements for Group Formation and Management (including the Internal Control System) that are only applicable to the group manager

Ref Std.	VERIFICATION RESULT of MUTU-Certification	
A – ICS: Group Entity and Group Management Requirements		
A.1 The Group demonstrates that they are legally formed		
A.1.1 Eligibility The cooperative has determined its management structure in the form of “ <i>Struktur Organisasi Koperasi Produsen Perkebunan Persada Engkersik Lestari</i> ” which was set on August 9 th , 2021. In this stipulation, Sabinus Mael was appointed as Chairman of the cooperative. The following is the organizational structure of KPPPEL, which consists of: <ul style="list-style-type: none"> • Member Meeting • Chairman - - - Supervisory Board • Secretary • Treasurer • Member Then, the cooperative also showed the document of the ICS Structure of <i>Koperasi Produsen Perkebunan Persada Engkersik Lestari</i> . It is known that, Yohanes Kiyai was appointed as Manager of ICS. The following is the organizational structure of ICS KPPPEL, which consists of: <ul style="list-style-type: none"> • ICS Manager • Approval Committee • Registration, Registration and Extension Unit • Internal Audit Unit • Purchasing and Marketing Unit • HCV and OHS Unit 		
MS-A		

Same as Eligibility

MS-B

Same as Eligibility

A.1.2

Eligibility

The cooperative has shown the document for the establishment of the *Koperasi Produsen Perkebunan Persada Engkersik Lestari* which is stated in the Deed of Establishment number 08 dated August 9th, 2021 by Notary Abang Suparjo, S.H., M.Kn. (Decree of the Minister of Law and Human Rights number AHU-555.AH.02.01 of 2014). In addition, the Decree of the Minister of Law and Human Rights of the Republic of Indonesia number: AHU-0011677.AH.01.26. year of 2021 concerning the Legalization of the Establishment of the Legal Entity of the *Koperasi Produsen Perkebunan Persada Engkersik Lestari* dated August 13th, 2021. In the document it is also explained related to KPPPEL's AD/ART.

In addition, the cooperative shows the formation of the ICS unit listed in decree number 10/SK/ICS/KOPBUN-PEL/IV/2021 on April 26th, 2021, which was approved by the ICS Manager.

MS-A

Same as Eligibility

MS-B

Same as Eligibility

A.1.3

Eligibility

The cooperative has a policy regarding the requirements to become a member as stated in the SOP for Member Requirements number 007/SOP/ICS/KOPBUN-PEL/III/2022 which has been in effect since March 2022 and has been signed by the ICS Manager. The following procedure describes the requirements to become a member, which includes:

- Submit copy of ID cards (*KTP*) and family cards (*KK*).
- Complying with the Cooperative's AD/ART.
- Submit Land Legality (for those who have oil palm plantations).
- Fill out the member registration form.
- Completed land tenure and conflict history forms

Based on the results of interviews with ICS managers and administrators, information was obtained that ICS had evaluated all the requirements if there were new members who would join KPPPEL. The ICS management will select the required documents at the beginning of the recruitment stage.

Until the audit activity took place, there was no evaluation process for new members who would join KPPPEL.

MS-A

Same as Eligibility

MS-B

Same as Eligibility

A.1.4

Eligibility

Based on the results of the study of the registration document for the Member Registration of *Koperasi Produsen Perkebunan Persada Engkersik Lestari*, it is known that farmers who are willing to become members of the cooperative will fill out a registration form, sign a Planters Statement that contains the farmer's commitment to sustainable palm oil standards, attach land legality (*SKT/SHM*) and attach identification such as photocopy *KTP* and *KK*. For example, a farmer with the initials YT who has filled out a cooperative member registration form and signed a Planters Declaration Letter on October 30th, 2021. The planter also attaches required documents such as *SKT* (number 593.2/59/SKT/PEMB covering an area of 2 Ha), copy of *KTP* and *KK*.

MS-A

Based on the results of the document review at the cooperative office, the auditor found on a sample basis that 15 members had signed a commitment to comply with the RSPO principles as well as the requirements of other members. This was also confirmed by the results of field interviews, where the farmers admitted that they had signed all the requirements and have understood the membership requirements.

MS-B

-

Status: Comply

A.2 The Group Manager is responsible for managing the Group for certification
A.2.1
Eligibility

Cooperatives have a work program that is listed in the operational activity plan document listed in the ICS Work Program period 2021 – 2022 and Work Plan period 2022 – 2023. The document explains the types of activities to be carried out and the timing of their implementation, for example:

- Member data collection and legality
- Land mapping and HCV identification
- Training for planters and farmer groups, including training on GAP, IPM, pesticide use, employment, FPIC, etc.
- Preparation of infrastructure such as procurement of PPE, fire extinguisher, first aid and hazardous and toxic waste warehouse
- Planting of garden boundary stakes
- Dissemination of SOPs and policies
- Monitoring of operational activities, including monitoring of production results, use of PPE at work, worker health, environmental management, etc

MS-A

The cooperative also shows documentation of the implementation of work programs carried out in 2021 – 2022, such as:

- Has listed all farmers who have joined as members of the cooperative and have also mapped the land.
- Has provided infrastructure such as PPE, fire extinguisher, first aid and hazardous and toxic waste warehouse in the cooperative office.
- Has carried out training to farmers and farmer groups, for example, socialization of the RSPO and ISPO Principles and Criteria which was held on March 28th, 2022, and attended by 26 people. The socialization was intended to provide farmers with an understanding of the RSPO RISS and ISPO principles and criteria.

Based on interviews with 15 farmers who became the sample, it was found that they understand about ICS, such as SOPs and applicable policies.

MS-B

Same as MS-A

A.2.2
Eligibility

Based on interviews with group managers, it is known that Group Managers have an understanding of the RSPO standard for Independent Smallholders.

The ICS organization consists of group manager, approval committee, registration, record keeping and outreach unit, internal audit unit, purchasing and marketing unit and HCV and OHS unit. The following is an example of a job description contained in the ICS job description document signed by the group manager on March 19th, 2022, for example:

- Group Manager: Designing KPPPEL's Internal Policy
- Purchasing and Marketing Unit: Documenting every FFB purchase and marketing transaction from members.

Based on interviews with ICS members, it is known that they are able to explain the responsibilities of each division and are competent in managing the group.

MS-A

Based on interviews with group managers, it is known that managers understand about RSPO certification and certification requirements. The group manager also easily manages members during audit activities and provides the necessary information for certification.

MS-B

Same as MS-A

A.2.3

Eligibility

The cooperative has an annual training plan aimed at smallholders and farmer groups as stated in the ICS Work Program period 2021 – 2022 and Work Plan period 2022 – 2023 documents. In the document it is known that the cooperative has an annual training plan which includes the RSPO Independent Smallholders Standards such as GAP training, IPM, employment, etc.

MS-A

The cooperative has implemented a phased approach to ensure that members understand the Independent Smallholder Standards through training activities. The cooperative shows the training realization documents to members in 2021 – 2022. For example:

- Pesticide Use Training which was held on November 20th, 2021, and attended by 39 people. The training discussed the use of pesticide application doses, storage and management of pesticide waste and handling of pesticide poisoning conditions.
- GAP Fertilization and Spraying training which was held on February 12th, 2022, and attended by 20 people. The training discussed the procedures for fertilization and spraying.

KPPPEL has conducted training for members/farmers. From the results of the review of the training realization document, it is known that not all members/farmers have attended the programmed training.

MS-B

Based on the results of the study of the training realization document, it is known that not all KPPPEL members have participated in the training that has been programmed. Then based on the results of interviews with 15 KPPPEL members as samples, it was found that 3 of them admitted that they had never received training so they did not understand the RSPO independent smallholder standard.

The cooperative has not been able to demonstrate sufficient evidence that all members have attended training and are able to demonstrate understanding of the RSPO Independent Smallholder Standard. This has been **Nonconformity No. 2022.01**.

A.2.3	Status: Nonconformity No. 2022.01
-------	-----------------------------------

B – ICS: Policies and Management

B.1 The group Internal Control System contains documented policies and procedures for operational management.

B.1.1

Eligibility

KPPPEL has formed an organization for operational management as well as job responsibilities. The ICS organization consists of:

- ICS Manager
- Approval Committee
- Registration, Registration and Extension Unit
- Internal Audit Unit
- Purchasing and Marketing Unit
- HCV and OHS Unit

KPPPEL also has a member exit procedure listed in the SOP for exiting and entering members with the number 035/SOP/ICS/KOPBUN-PEL/III/2022 in March 2022 which explains the procedures for exiting and entering KPPPEL members.

KPPPEL also has a member sanction procedure listed in the SOP listed in the Member Sanctions SOP Number 041/SOP/ICS/KOPBUN-PEL/III/2022 in March 2022 which explains the sanctions for members who do not follow the KPPPEL rules.

In addition, the Cooperation also has a procedure for carrying out internal audits listed in the internal audit procedure Number 038/SOP/ICS/KOPBUN-PEL/III/2022 in March 2022 which explains that internal audits are carried out once a year.

MS A & MS B

KPPPEL's Internal Control System has carried out internal audit activities in order to implement sustainable business improvements for all members who are members of the cooperative (149 members). Internal audit activities were carried out on 18, 19 and 23 March 2022 by the Internal Control System team, in which 17 non-conformities were found and improvements have been made. For example, there is a discrepancy regarding the existence of smallholders who do not know that the cooperative already has a legal entity, where the improvement made is to provide comprehensive socialization to all cooperative members that KPPPEL already has a legal entity.

B.1.2

Eligibility, MS-A and MS-B

KPPPEL already has basic information consisting of member names, plantation information, production data and legal documents (land certificate, land certificate from the village). KPPPEL has 149 smallholders consisting of 155 plantation blocks with a total area of 218.47 Ha which are the scope of RSPO certification in this MS-B audit activity.

All members prior joint with the cooperation need to complete the requirements as a prospective member, among others copy id cards, land ownerships evidence, family identity cards and etc. Furthermore, the members also need to sign several documents as follows:

- Members' statement letter of willingness to follow the RSPO certification
- Statement letter of Smallholder Declaration,
- Statement letter of RSPO Certification commitment as mentioned in annex 2.

In addition, the Cooperation can also show several examples of Cooperation membership cards that explain the Name, Member Number, Position, and address. Based on the verification of the Cooperation member list document, it is known that the smallholder is indeed a member of the Cooperation and all the forms are kept at the Cooperation Office.

Status: Comply

C – ICS: Group business planning

C.1 The group has a group Business Plan prepared with the participation and contributions of group members.

C.1.1

Eligibility

- KPPPEL's 2021 work program which was set in July 2021, it is known that there are 46 activities including socialization related to the RSPO, data collection of new members and legality, land mapping, training, employment, making procedures, infrastructure preparation, internal audit, internal audit improvement, and certification implementation.
- The work program for 2022, including the following:
 - The business plan for buying and selling FFB is determined and socialized to members on January 25, 2022, with a target of 180 tons/month, with FFB sources from independent farmers who are members of KPPPEL, with a target income of Rp. 25/kg.
 - The KOPBUN-PEL business plan for selling non-subsidized fertilizers is determined and socialized to members on March 26, 2022 with a target of 100 tons per year, with a profit target of Rp. 13,500,000.
 - Discussion of the work program for the period 2022 – 2023 by ICS and the cooperative management on September 2, 2022, with the results including registration of new members, increased production, expansion of farmers' plantations, mapping, etc.
 - Estimated production per month per farmer for the period October 2022 – September 2023, set for September 10, 2022.
 - Plans for expansion and addition of new members are set for September 10, 2022, with a target of 100 farmers in 2023 and additional expansion of 200 ha.

MS-A

The ICS manager and management showed the Internal Audit documents which were carried out on 18, 19, and 23 March 2022 for 156 independent smallholders, with 17 findings and recommendations for improvement have been shown. The company also showed evidence of improvement in the form of socialization and training related to the principles and criteria of RSPO, GAP, IPM, labor, fire prevention, pesticides and LB3 management, as well as the installation of posters on environmental aspects, prohibition of spraying river borders, hunting restrictions, and LB3 warehouse instructions.

KPPPEL already has an annual work program, as shown to the Auditor during the July 2021 - October 2022 period where there were 46 work programs. The results of the document review revealed that the work plan had been implemented, such as the discussion of the work program for the 2022-2023 period by ICS and cooperative management on September 2, 2022, with the results including registration of new members, increased production, expansion of farmer's gardens, mapping, etc.

The implementation of the work program is also regularly reviewed. One of the reviews was carried out by means of an internal audit, as shown in the internal audit report document which was carried out from 18 to 23 March 2022, and the results were socialized to KPPPEL members on 23 March 2022

MS-B

KPPPEL shows the recording of cooperative receipts and expenditures. It is known that the source of funding is obtained from member fees and FFB sales. while for expenditure, it is used among others for socialization activities and trainings. KPPPEL in carrying out training and socialization is also assisted by SPKS. KPPPEL shows evidence of efforts to grow financial independence, as in the invoice document for the sale of FFB to PT Agro Andalan on 29 - 30 September 2022. This is one of the proofs of KPPPEL's efforts to foster financial independence.

Status: Comply

C.2 The ICS of the group is integrated with the Group's Management Plan.

C.2.1

Eligibility

The KPPPEL 2021 work program which was set in July 2021, it is known that there are 46 activities including socialization related to the RSPO, data collection for new members and legality, land mapping, training, employment, procedure development, infrastructure preparation, internal audit, internal audit improvement, and implementation. certification. The planned trainings include training on GAP, IPM, use of pesticides, employment, HCV, use of fire, supply chain, handling and management of LB3, etc.

MS-A

Training implementation report:

- Restriction on the use of fire for plantation activities and fire management on 24 June 2021, with cooperative members participating.
- Employment, on November 20, 2021, with cooperative members participating. Among them are identities/passports and the prohibition of employing minors, with speakers from SPKS.
- IPM and fertilization, on November 20, 2021, with the Head of Plantation Division of the Sekadau District Food Security, Agriculture and Fisheries as a resource.
- RSPO and ISPO Principles and Criteria, dated 28 March 2022 for members of Cooperatives and ICS, with speaker from SPKS.
- Supply chain and palm trace, March 29, 2022 for members of Cooperatives and ICS, with speakers from SPKS.
- GAP: maintenance of plants, shoots, harvesting, OHS, and HCV, dated March 5, 2022 for members of the Cooperative, with PT Agro Andalan's Assistant Plantation as the speaker.
- Fertilization and Spraying, February 12, 2022 for members of the Cooperative, with speakers from SPKS.
- The use of pesticides, waste management so as not to pollute the environment, and first aid in case of poisoning, on 20 November 2021 for members of the Cooperative, with the speaker being the Head of Extension at the Sekadau District Food, Agriculture and Fisheries Security Office.

MS-B

Cooperatives show reports on training implementation, for example GAP training report on Fertilization and Spraying based on RISS principles and criteria, dated February 12, 2022 for Cooperative members, with speakers from SPKS. However, based on the results of field observations and interviews with smallholders who were used as sampling, it is known that:

- At the location of KPPPEL member farmers with the initials MND, there is still the use of paraquat with the paratop brand.
- The average number of farmers interviewed was still using paratopes in spraying weeds on their land.
- In the LB3 warehouse, it was discovered that there were traces of paraquat packaging with the paratop brand.
- The results of the review of the LB3 warehouse checklist document revealed that there were traces of paratop packaging that came in on September 4, 2022.

Based on the things mentioned above, it is known that the group manager has not been able to prove the group's compliance with all these independent smallholder standards. This becomes a Nonconformity No. 2022.02.

C.2.1	Status: Nonconformity No. 2022.02	
-------	-----------------------------------	--

D – ICS: Group Trading System for Certified Volumes

D.1 The group has a procedure and system in place for the tracking of FFB.

D.1.1

Eligibility, MS-A and MS-B

KPPPEL has documentation of production and sales of FFB for each member for the period September 2021 until August 2022. However, KPPPEL still has not obtained certified FFB volumes, so that there has been no physical sale of certified products.

Group Manager has had form for FFB tracking if group members sold FFB as Physical which inform FFB Price, FFB Volume, income, buyer, and harvesting block.

	Status: Comply	
--	----------------	--

D.2 The group documents and implements a system for the tracking of FFB.

D.2.1

Eligibility, MS-A and MS-B

The results of the document review show that the KPPPEL group manager has actually managed and recapitulated FFB annual production data for each farmer, for example annual production data for the period September 2021 to August 2022. In addition, the KPPPEL Manager has also attended training on the book & claim method (RSPO Credit) on 29 March 2022. However, KPPPEL still has not obtained certified FFB volume so that there has been no physical sale of certified products or through book and claim.

	Status: Comply	
--	----------------	--

D.3 The group has a procedure and system for premium distribution.

D.3.1

Eligibility

The Cooperation has established the SOP Credit Incentive Distribution (004/SOP/ICS/KOPBUN-PEL/III/2022, March 2022), which aims to be a guide/guideline that can be used in distribution of premium distribution from the sale of certified credits through a Book and claims Models to cooperation members. In the procedure it is explained that:

- 30% of sales proceeds are allocated for the 1st year Surveillance Audit
- 20% of sales proceeds are allocated to the operational costs of the ICS management
- 5% of sales proceeds are allocated to the Cooperative's treasury
- 1% of sales proceeds are allocated to village contributions
- 44% is distributed to the members of the cooperative according to the needs and agreements of the members discussed in the forum.

There are several facts found during the audit activity, namely:

- KPPPEL has RSPO Credit Incentive Distribution SOP No. 004/SOP/ICS/KOPBUN-PEL/III/2022 dated March 2022 determined

by the ICS Manager, which explains the distribution of incentives from the sale of RSPO credit that will be obtained after obtaining RSPO certification.

- The results of interviews with 15 members of KPPPEL, it is known that after the Cooperatives get RSPO certification, members will get more benefits from credit sales incentives, but information related to the contents of the SOP related to these benefits/incentives has not been socialized by the management of the Cooperative or ICS.
- The results of interviews with the ICS Manager and KPPPEL management, it is known that information related to obtaining benefits has been conveyed to members, but the contents of the SOP related to the benefits/incentives have not been known by the members. This is because the cooperative has not yet received an RSPO certificate, so this has not been further socialized to members.

KPPPEL has not been able to show evidence that the plan for the distribution and use of benefits/incentives (premiums) that have been set by the Group Manager and management has been transparently disseminated to all members of the cooperative. This becomes Non-Conformity No. 2022.03

MS A and MS B

For now, KPPPEL still has not obtained certified FFB volume so that there has been no physical sale of certified products or through book and claim.

D.3.1	Status: Non-Conformity No. 2022.03	
-------	------------------------------------	--

3.2.2 The Principle Criteria and Indicators that are applicable to both smallholders (as individual group members) and group managers

Ref Std.	VERIFICATION RESULT of MUTU-Certification	
PRINCIPLE 1: OPTIMISE PRODUCTIVITY, EFFICIENCY, POSITIVE IMPACTS AND RESILIENCE		
1.1		
Smallholders establish a legal entity which has organisational capacity to comply with the RSPO Independent Smallholder Standard.		
<p>Eligibility</p> <p>The Persada Engkersik Lestari Plantation Producers Cooperative (KPPPEL) has a valid registration document as evidence of a legal entity as follows, Deed of Establishment of Association No. 08 dated August 9, 2021 in the name of "Persada Engkersik Lestari Plantation Producer Cooperative" which is located on Jalan Garuda, Hamlet Engkersik II, RT 029, RW 000, Engkersik Village, Sekadau Hilir District, Sekadau District, Kalimantan Barat Province published by Notary Abang Suparjo, SH., M.Kn. In the Deed of Establishment, it is stated that Mr. Sabinus Mael as chairman of the board, the document has also been approved by the Ministry of Law and Human Rights of the Republic of Indonesia No. AHU-0011677.AH.01.26. 2021 on August 13, 2021.</p> <p>KPPPEL has been a member of the RSPO since 04 August 2022 with RSPO member number 1-0404-22-000-00.</p> <p>Risk-based business license NIB 1011210019639, which informs the name of the business actor, address, telephone number, email, investment status, Indonesian Standard Classification Code for Business Fields, and business scale.</p> <p>Based on document review and interviews with members found that members had signed a statement describing fair and transparent decision-making and governance.</p> <p>MS-A</p> <p>KPPPEL already has ICS in group management, as follows:</p> <ul style="list-style-type: none"> Decree number 10/SK/ICS/KOPBUN-PEL/IV/2021 dated 26 April 2021, with a manager structure; Approval Committee; Registration, Registration, and Counselling Unit; Internal Audit Unit, Marketing Unit, and HCV and OHS Unit. KPPPEL has 43 procedures, including GAP, IPM, river border area management, LB3 management, farmer record books, and Internal Audit. Training on FFB pricing, on March 5, 2022, with SPKS as resource persons. Group financial planning training on December 3, 2021, with resource persons from SPKS. Training on pesticide use, pesticide waste management, and first aid for pesticide poisoning on November 20, 2021, with the resource person from the Head of Extension at the Sekadau District Food Security, Agriculture and Fisheries Office. GAP (Good Agricultural Practices) training such as plant maintenance, germination, harvesting, K3, and HCV which was held on March 5, 2022, with PT Agro Andalan's Assistant Plantation as a resource. GAP training such as spray and fertilizer application which was held on 12 February 2022, with SPKS as resource persons. <p>MS-B</p> <p>KPPPEL shows the Farmer's Record Book, which contains information on the name, address, membership number, and location of the plantation. Farmer's book contains harvest records, fertilization reports, spray and pesticides used reports, and pruning reports. In the notebook, a calculation of the costs incurred has been made.</p> <p>The results of interviews and field visits to the farmer's area with the initials YD, it is known that he has understood the technicalities of maintaining oil palm plants in accordance with GAP.</p> <p>The results of interviews with KPPPEL members found that they had signed a commitment on their own awareness and without coercion. As a result of the review of the commitment document, it is known that governance is fair and transparent.</p> <p>Based on this, it is known that KPPPEL has demonstrated the implementation of fair and transparent decision-making and governance, as well as Sustainable Financial Management"</p>		

	Status: Comply	
1.2 Smallholders have the capacity to effectively manage their farm.		
<p>Eligibility -</p> <p>MS-A Training implementation report:</p> <ul style="list-style-type: none"> • IPM and fertilization, on November 20, 2021, with the Head of Plantation Division of the Sekadau District Food Security, Agriculture and Fisheries as a resource. • RSPO and ISPO Principles and Criteria, dated 28 March 2022 for members of Cooperatives and ICS, with speaker from SPKS. • Supply chain and palm trace, March 29, 2022 for members of Cooperatives and ICS, with speakers from SPKS. • GAP: maintenance of plants, shoots, harvesting, OHS, and HCV, dated March 5, 2022 for members of the Cooperative, with PT Agro Andalan's Assistant Plantation as the speaker. • Fertilization and spraying, February 12, 2022 for members of the Cooperative, with speakers from SPKS. • The use of pesticides, waste management so as not to pollute the environment, and first aid in case of poisoning, on 20 November 2021 for members of the Cooperative, with the speaker being the Head of Extension at the Sekadau District Food, Agriculture and Fisheries Security Office. <p>Based on document review and interviews revealed that KPPPEL members had attended the training held.</p> <p>MS-B KPPPEL shows the Farmer's Record Book, which contains information on the name, address, membership number, and location of the plantation. Farmer's book contains harvest records, fertilization reports, spray and pesticides used reports, and pruning reports. In the notebook, a calculation of the costs incurred has been made. The farmer's book has calculated the value of each activity, including recording the value/price of FFB produced by members.</p> <p>The results of interviews and field visits to the farmer's area with the initials YD, it is known that he has understood the technicalities of maintaining oil palm plants in accordance with GAP.</p>		
	Status: Comply	
1.3 Smallholders implement good agricultural practices (GAP) on their farms.		
<p>Eligibility KPPPEL has shown a statement from KPPPEL member growers referring to attachment 2 of RISS NI 2022, which among other things states that they will comply with the principles and criteria related to the RSPO, and continue development in accordance with applicable standards. For example, the statement of smallholders with the initials YK, signed on October 31, 2021. The results of interviews with members with the initials YK, BY, and YD also revealed that those concerned had attended socialization training on the RSPO ISH principles and criteria, employment training, etc.</p> <p>MS-A Training implementation report:</p> <ul style="list-style-type: none"> • IPM and fertilization, on November 20, 2021, with the Head of Plantation Division of the Sekadau District Food Security, Agriculture and Fisheries as a resource. • RSPO and ISPO Principles and Criteria, dated 28 March 2022 for members of Cooperatives and ICS, with speaker from SPKS. • GAP: maintenance of plants, shoots, harvesting, OHS, and HCV, dated March 5, 2022, for members of the Cooperative, with PT Agro Andalan's Assistant Plantation as the speaker. • Fertilization and Spraying, February 12, 2022 for members of the Cooperative, with speakers from SPKS. • The use of pesticides, waste management so as not to pollute the environment, and first aid in case of poisoning, on 20 November 2021 for members of the Cooperative, with the speaker being the Head of Extension at the Sekadau District Food, Agriculture and Fisheries Security Office. <p>MS-B The results of observations and interviews with 15 sample planters, it was found that the planters had understood the contents of the</p>		

training and had begun to implement gardening practices according to GAP. KPPPEL shows the Farmer's Record Book, which contains information on the name, address, membership number, and location of the plantation. Farmer's book contains harvest records, fertilization reports, spray and pesticides used reports, and pruning reports. In the notebook, a calculation of the costs incurred has been made.		
	Status: Comply	
PRINCIPLE 2: ENSURE LEGALITY, RESPECT FOR LAND RIGHTS AND COMMUNITY WELLBEING		
2.1		
Smallholders have legal or customary rights to use the land in accordance with national and local laws and customary practices.		
<p>Eligibility KPPPEL has complete information regarding the coordinate points or land plot maps of each member (a list of coordinate points for each farmer's plot is found in Appendix 3), for example land of Kansin with coordinate S 0° 4' 59" and E 111° 2' 9".</p> <p>MS A Every member who will become a member of KPPPEL must have legal documents that are legal and recognized by regulations in Indonesia. The legality documents of farmers who are members of the Koperasi Produsen Perkebunan Persada Engkersik Lestari consist of a Land Ownership Certificate from Village Head and Free Hold Title (<i>Sertifikat Hak Milik</i>), for example:</p> <ul style="list-style-type: none"> Free Hold Title (SHM) No. 02205, name of the right holder in the name of Yohanes Kiyai, certificate issuance date December 15, 2015, with measurement letter No. 00718/ENGKERIK/2015, dated December 3, 2015, with an area of 11,552 m². Free Hold Title (SHM) No. 02204, name of the right holder in the name of Yulita Nia, certificate issuance date December 15, 2015, with measurement letter No. 00717/ENGKERIK/2015, dated December 3, 2015, with an area of 14,742 m². Land Ownership Certificate (SKT) No. 593.2/65/SKT/2019, on behalf of Albinus Rafael, dated 17 June 2019, with an area of 2.5 Ha. <p>Based on the auditor's verification of the Free Hold Title (SHM) and Land Ownership Certificate (SKT) documents that were sampled, all the names in the documents are the same as the land owner.</p> <p>All member farmers in the Koperasi Produsen Perkebunan Persada Engkersik Lestari who are following the RSPO certification have STDB. The results of the document review show that 4 of the 149 farmers who are members of KPPPEL are still in the process of obtaining SPPL at the relevant agencies. Cooperatives are encouraged to ensure that the acquisition of SPPL for these 4 farmers can run positively. OFI</p> <p>MS B Based on field observations of the 15 smallholders that were used as sampling, it is known that there are no clear boundary markers that show the boundaries of the smallholder's land with other lands. Then from interviews with the ICS Manager and the Cooperative management, it was informed that the boundary markers have not been installed and are currently still based on natural boundaries. The cooperative has not yet been able to show sufficient evidence that every plot of land of the smallholders who are members of the cooperative already has a clear demarcation between their land and other lands. This becomes Non-Conformity No. 2022.04.</p>		
2.1	Status: Non-Conformity No. 2022.04.	
2.2		
Smallholders have not acquired lands from indigenous peoples, local communities or other users without their free, prior and informed consent (FPIC), based on a simplified FPIC approach.		
<p>Eligibility, MS-A and MS-B Based on the results of the document review, interviews with KPPPEL management, interviews with 15 sample farmers and Land Office of Sekadau District, it is known that most of the land acquisition is hereditary and some are the result of buying and selling. Information regarding land acquisition can also be seen in the Land Certificate or the Member's Ownership Certificate. Every sale and purchase of land is always based on the agreement of both parties witnessed by the parties including village officials.</p>		
	Status: Comply	
2.3		
The right to use the land is not disputed by indigenous peoples, local communities or other users.		

Eligibility, MS-A and MS-B All members of KPPPEL have signed the smallholders statement which at one-point states that all remaining disputes have been resolved, and have also signed a non-dispute declaration letter informing that there are no disputes occurring on the land of all members (149 members) of KPPPEL. Based on the results of the document review, interviews with KPPPEL management, interviews with 15 sample farmers, Land Office of Sekadau District and Plantation Agency of Sekadau District, it is known that most of the land acquisition is hereditary, and some are the result of buying and selling. There are no disputed areas in the area of the smallholders in Koperasi Produsen Perkebunan Persada Engkersik Lestari which is the scope of RSPO certification.		
	Status: Comply	
2.4 Smallholder plots are located outside of areas classified as national parks or protected areas, as defined by national, regional or local law or as specified in National Interpretations.		
Eligibility, MS-A and MS-B KPPPEL shows the results of the overlay of the Spatial Plans (<i>RTRW</i>) map of Kalimantan Barat Province, a map of forest areas in accordance with SK 733/Menhut-II/2014, Map of Postponing the Granting of New Permits (PIPPIB) period II of 2022 and a map of the land of farmers who are members of KPPPEL, it is known that the location of KPPPEL's farmers' lands is outside areas classified as national parks or protected areas by national law and entirely in other use areas (<i>APL</i>).		
	Status: Comply	
2.5 For new plantings, smallholders do not clear or acquire any land without obtaining the free, prior and informed consent (FPIC), of indigenous people and/ or local communities and/ or other users, based on a simplified FPIC approach.		
Do any smallholders within the group have plans for new plantings of oil palm? If none, SKIP		
Eligibility Based on the cooperation plan document, it is known that until 2022 there is no plan for farmers to plant new oil palms. Verification of documents, interviews with cooperation management and farmers during field visits, it was found that all members had signed and acknowledged the terms of membership. All members before joining the cooperation need to complete the requirements as prospective members, including photocopy of ID card, proof of land ownership, family identity card and a statement of commitment to comply with the cooperation's rules as referred to in appendix 2 RISS such as: <ul style="list-style-type: none"> • Not clearing or acquiring land from indigenous peoples, local communities, or other users without their free, prior and informed consent (FPIC), based on a simplified FPIC approach • No new planting or no expansion of existing farms in primary forests, HCV areas, HCS forests, in riparian areas, or on steep slopes (more than 25 degrees or as in National Interpretation) • Protect HCVs and HCS forests through the precautionary practices approach • No new planting on peat and replanting on peat only in areas with low risk of flooding and saline intrusion 		
MS-A KPPPEL members have conducted FPIC training which was conducted on 24 June 2021 which was attended by 24 member Farmers. The training was conducted as an effort for KPPPEL to provide an understanding of the basic concepts of FPIC, the importance of FPIC, and the resolution of independent smallholder land conflicts.		
Based on document review, interviews, and field observations, no new plantings have been carried out by farmers.		
MS-B Based on document review, interview, as well as field observation, there is no a new planting conducted by smallholders.		
	Status: Comply	
PRINCIPLE #3 RESPECT HUMAN RIGHTS, INCLUDING WORKERS' RIGHTS AND CONDITIONS		
3.1 There is no use of forced labour.		

<p>Eligibility</p> <p>All members have signed a statement of commitment regarding the prohibition of forced labor. For example, a farmer with the initials MD has signed a Planters Statement on October 31st, 2021. At point D3 the document reads “I am committed to ensuring that there is no forced labor practice in plantation operations and to stop the practice of forced labor that still exists”.</p> <p>In addition, the cooperative also has a SOP <i>Pekerja Lahan</i> number 003/SOP/ICS/KOPBUN-PEL/III/2022 which has been in effect since March 2022 and has been signed by the ICS Manager. In the procedure it is explained that there should be no element of coercion in work and farmers must provide wages to workers at least in accordance with the minimum wage applicable in Sekadau District.</p> <p>MS-A</p> <p>The farmers have also attended the Employment Training which was held on November 20th, 2021, which was attended by 30 people. The training discussed aspects of employment that refer to the manpower law in force in Indonesia, for example relating to the determination of minimum wages and proper payment, prohibition of withholding personal legal documents, providing adequate housing facilities, no forced labor, to prohibition of employing children in the workplace under 18 years of age.</p> <p>MS-B</p> <p>Based on direct interviews with 15 sampling members, information was obtained that the members could demonstrate and understand information related to the prohibition of forced labor. Many members carry out harvesting, spraying, fertilizing or other activities independently. For farmers who use labor, for example members with the initials MND, it is known that farmers have provided free work tools and paid wages according to the mutually agreed upon without any party being harmed.</p>	<p>Status: Comply</p>	
<p>3.2</p>		
<p>Children are not employed or exploited. Work by children is acceptable on family farms, under adult supervision and when not interfering with education programmes. Children are not exposed to hazardous working conditions.</p>		
<p>Eligibility</p> <p>The cooperative shows a statement document not to use child labor in the Planters Statement document for KPPPEL members. Point D8 explains the commitment of members to ensure that there are no child labor practices in plantation operations and to stop the ongoing practice of child labor.</p> <p>In addition, the cooperative also has a SOP <i>Pekerja Lahan</i> number 003/SOP/ICS/KOPBUN-PEL/III/2022 which has been in effect since March 2022 and has been signed by the ICS Manager. In the procedure, it is explained that cooperatives and their members are prohibited from employing minors in accordance with applicable laws and regulations.</p> <p>Based on interviews with 15 samples of cooperative members, it is known that members already know about the minimum age of workers, which is 18 years, not allowing children to work in dangerous conditions, and children's rights to education.</p> <p>MS-A</p> <p>The cooperative has shown evidence of the implementation of employment training which was held on November 20th, 2021 and attended by 30 people. The training discussed aspects of employment that refer to the manpower law in force in Indonesia, for example prohibition of the use of child labour, children are not employed or exploited, work by children is acceptable on family farms under adult supervision and when it does not interfere with educational programmes, and children are not exposed to hazardous working conditions.</p> <p>Based on interviews with cooperative management and cooperative members, it is known that there are several members using labor. The workforce used is >20 years old.</p> <p>MS-B</p> <p>Same as MS-A.</p>	<p>Status: Comply</p>	
<p>3.3</p>		
<p>Workers' pay complies with minimum legal requirements, mandatory industry standards as defined by national law or collective bargaining, whichever takes priority in local regulations.</p>		

Are there workers on the farm? If no, SKIP
Eligibility

The cooperative shows a Planters Statement Letter, for example a farmer with the initials YT who has signed the letter on October 30th, 2021. Point D4 explains the commitment that members will pay wages to workers in accordance with the applicable minimum wage. This has also been socialized to cooperative members, for example on November 20th, 2021, which was attended by 30 participants.

MS-A

In determining wages, farmers are guided by wages based on agreed yield units. The wage payment agreement and other provisions are discussed verbally between the land owner and the workers which contain the following matters:

- Duties and responsibilities
- Wages from work
- Use of PPE in the workplace and work equipment facilities

Based on the results of interviews with farmers, information was obtained that the payment of wages is different for each type of work. For example, for harvest work, wages are paid per Kg of FFB, which is IDR 200,-/Kg. Then, the informant added that the yields obtained every 2 weeks are generally around a minimum of 1 ton. This statement is in accordance with the minimum wage applicable in Sekadau District in 2022. Based on the Decree of the Governor of Kalimantan Barat Number 1463/DISNAKERTRANS/2021, it is known that the current minimum wage is IDR 2,486,031,-/month or IDR 99,441,-/day. If workers get a harvest of 1 ton, the wages earned are IDR 200,000, -/ton. Besides that, farmers also use spray labor to help maintain their gardens. The wages paid are Rp. 10,000 per head of spray. In one day of spraying activities generally spend 10 times refilling pesticides on the kep sprayer. So, the wages earned by workers are IDR 100,000/spraying activity.

Members show proof of payment to workers in accordance with the agreed agreement, proof of payment is listed in the receipt of payment of workers' wages. For example, a worker with the initial S has received a wage from the land owner (farmer/member) with the initial YT of IDR 250,000 in September 2022.

MS-B

Same as MS-A

Status: Comply

3.4

Workers understand their rights and freedom to file a complaint to group manager or relevant third parties, including RSPO.

Are there workers on the farm? If no, SKIP
Eligibility

The cooperative shows the document of the Planter's Statement Letter, which among other things states the farmers' willingness to respect the workers' right to file grievance/complaints. For example, a farmer with the initials AM has given the letter on October 9th, 2021.

The cooperative also shows the SOP for the Grievance Mechanism number 031/SOP/ICS/KOPBUN-PEL/III/2022. The procedure describes the implementation of internal complaints or external complaints, which are as follows:

- Complaints can be submitted verbally and in writing or through the suggestion box.
- ICS management will record the complaint in the complaint log
- Complaints will be responded to by the parties concerned (in this case to ICS units)
- Complaints recorded in the complaint log book should be initiated regularly at the ICS rapat meeting

MS-A

The cooperative has conducted training to farmers regarding the mechanism for submitting grievance/complaints, for example the FPIC (Free, Prior and Informed Consent) Training which was held on June 24th, 2021 and attended by 24 participants.

Based on interviews with farmers with the initials MND who have workers, it is stated that farmers have known the flow of grievance/complaints and have submitted them directly to their workers and for the past one year there have been no grievance/complaints from workers.

MS-B Based on interviews with workers and members, it can be concluded that workers already know the grievance/complaint mechanism that can be submitted verbally or other communication media to the land owner or cooperative management. During 2021-2022, there has been no information on complaints submitted by members or cooperative workers.		
	Status: Comply	
3.5 Working conditions and facilities are safe and meet minimum legal requirements.		
Eligibility All members have signed a statement of commitment regarding the provision of safe working conditions and facilities as stated in the Planter's Statement Letter. For example, a farmer with the initials TC who signed the letter on December 4 th , 2021.		
MS-A The farmers have also attended training or socialization on Risk Identification and Control held by the cooperative on 19 February 2022. The training is aimed at providing farmers with an understanding of risk identification and control in plantations.		
Then the farmers have also attended the Pesticide Use Training and Spraying GAP Training which were held on November 20 th , 2021, and February 12 th , 2022. The training discussed the OHS aspects of spraying for farmers in the field, such as technical use of pesticides, how to store and use them in the field taking into account the safety and health aspects of workers.		
MS-B Based on interviews with members who use workers as well as with family members of farmers, information was obtained that members have demonstrated and understood information related to safe working conditions and facilities such as the use of PPE (helmets and boots) in harvesting and fertilizing. From the results of the interview, it was also known that farmers can obtain a first aid kit with complete contents available at the cooperative office. Complete first aid kits are provided by the cooperative management beforehand.		
	Status: Comply	
3.6 There is no discrimination, harassment, or abuse on the farm		
Are there workers on the farm? If no, SKIP		
Eligibility The cooperative has presented a Planters Statement which contains a commitment regarding the absence of discrimination, harassment or violence in the plantation. All farmers who join as members of the cooperative have signed the statement letter, for example farmers with the initials YD on October 30 th , 2021.		
Based on interviews with KPPPEL management, it is known that some members use labor and some do their activities independently.		
MS-A The cooperative has shown evidence of the implementation of training or socialization related to discrimination, harassment or violence as stated in the Employment Training document which was held on November 20 th , 2021 and the Socialization of Sexual Harassment and Violence which was held on March 28 th , 2022. These activities are aimed at providing understanding to farmers about sexual harassment and violence.		
Based on interviews with members, it is known that they are aware of the need for a safe workplace. Then, during the past year there have also been no complaints related to discrimination, harassment and violence in plantation operations.		
MS-B Based on the results of interviews with cooperative management, farmers and their family members, it was found that there were no complaints/reports related to discrimination, harassment and violence. In addition, workers freely declare that they can work in a place that is free from discrimination, harassment or harassment.		
	Status: Comply	
PRINCIPLE #4 PROTECT, CONSERVE AND ENHANCE ECOSYSTEMS AND THE ENVIRONMENT		

4.1

High Conservation Values (HCVs) on the smallholder plot or within the managed area and High Carbon Stock (HCS) forests identified after November 2019 using the simplified combined HCV-HCS approach are managed to ensure that they are maintained and/or enhanced.

Eligibility

KPPPEL has shown a statement by KPPPEL member growers referring to attachment 2 of RISS NI 2022, which among other things states that they do not carry out new plantings/expansion of existing plantations in primary forest, HCV area, HCS forest, river border area, or steep slopes (more of 25° or as provided for in national interpretations).

MS-A

The grower has carried out training related to HCV. This is shown in the GAP (Good Agricultural Practices) training documents such as plant maintenance, sprouting, harvesting, OHS, and HCV which was held on March 5, 2022, with the Assistant of PT Agro Andalan as a resource. Some of the topics discussed included maintaining and conserving HCV and HCS forests, preventing human-animal conflicts, as well as rare, threatened, and critical species. The results of field observations also revealed that there were posters related to the prohibition of hunting for protected animals that were found on several roadsides in Engkersik village.

MS-B

KPPPEL has conducted an HCV Assessment Report, which was carried out by Perkumpulan Alam Hijau (A-Hi) in March 2022. The report contains, among others, HCV identification, management plan and HCV monitoring. It is known that there are 4 types of HCV, namely HCV 1 which is related to biodiversity conservation, HCV 4 which is related to the provision of environmental services, HCV 5 which is related to meeting the basic needs of people who depend on natural resources and HCV 6 related to the cultural values of the local community. The results of the interview revealed that the HCV area was not found in the planter's planting area, except for the river border which was contained in HCV 4, which was found in several KPPPEL member planters' areas. The results of field observations in the plantation area with the initials MND, it is known that there is a Batang Merundang river which empties into the Si Seberuk River. However, for the border area, it is already planted. It is known from the Farmer Master Data document, that the planting year for MND planters was in 2015.

Based on interviews with 15 planters who are members of KPPPEL, it is known that this has been understood by them. Based on field observations in the plantation area with initial YD and BT, it is known that there are no practices that can interfere with RTE, HCV, and HCS forest species.

Status: Comply

4.2

Where the existing smallholder plot has been planted and cleared after November 2005 or is on an area identified as HCS forests after November 2019 up to the eligibility period, a remediation and compensation process appropriate for smallholders based on Land Use Change Analysis (LUCA) will be applicable (Reference preamble).

Eligibility

Based on documents review and interviews, it is known that the planting year of KPPPEL members is between 2010 - 2018. KPPPEL can show information on all plots of smallholders converted and planted with oil palm after 2005 as well as all coordinates/maps of plantation plots. A simplified combined HCV-HCS approach has also been used which can be proven in the grower's statement document which contains:

- Members provide all land tenure information
- Locations (coordinates) of all plantation plots currently planted with oil palm
- Information on all plots that have been converted and planted with oil palm after 2005
- Plantations plots located on steep slopes
- Plantations plots located on peatlands
- Detailed information on planned replanting and expansion of oil palm
- No land and land use disputes
- Source of labour for the Plantations.

MS-A

KPPPEL has sent the KPPPEL Disclosure Form to the RSPO. The process of reporting Disclosure data is as follows:

- Email from Koperasi Engkersik (koperasiengkersik@gmail.com) on 25 April 2022 to the Membership Helpdesk (membership@rspo.org) stating that KPPPEL has now completed completing the KPPPEL registration data. Attached is the HCV Report and KPPPEL Disclosure Form

<ul style="list-style-type: none"> There have been several corrective email replies from RSPO and KPPPEL, and regarding the status of LUCA, an email from the Membership Helpdesk has been shown on July 6, 2022 stating that the Compensation Team has completed the LUCA process with LUCA status having passed, and the final conservation obligation is 93.63 ha and the area environmental remediation 0 ha. 		
MS-B Based on an email from the RSPO, it is known that all the plantation areas of member farmers were planted with oil palm after November 2005 so that it is declared The calculated Final Conservation Liability is 93.63 ha. In accordance with RISS NI 2022, the RaCP (Remediation and Compensation Procedure) mechanism for independent smallholders is not yet available, so this will not be a barrier to the certification process.		
	Status: Comply	
4.3 New plantings of independent smallholders, since November 2019: <ul style="list-style-type: none"> Do not replace any HCVs Do not replace any HCS forests as defined by the simplified combined HCV-HCS approach Are not on steep slopes (more than 25 degrees or as in NI) Are not on peat areas of any depth. 		
Do any smallholders within the group have plans for new plantings of oil palm? If none, SKIP		
Eligibility, MS-A & MS-B Until the audit activity is carried out and refers to the KPPPEL plan, there is no plan to plant new oil palm outside the current certification area. Based on the 2021 and 2022 work plan document, there are no plans for farmers to plant new oil palms. Based on field observations in several members land and interviews with 15 sample farmers, it is known that there is no replanting plan. Currently, oil palms are 4 - 12 years old, namely the oldest planting year 2010 and the youngest 2018. The association's plan to add members is planned for 2023. Regarding replanting in conservation areas, all members have signed a declaration not to carry out new plantings in HCV or HCS forests, on steep slopes or on peat. In addition, all existing association members do not have areas with these qualifications.		
	Status: Comply	
4.4 Where smallholder plots exist on peat, subsidence and degradation of peat soils is minimised by use of best management practices.		
Do any smallholders within the group have existing plots on peat? If no, SKIP		
Eligibility, MS-A & MS-B Based on the verification of the map of farmers' land distribution, APL, and the Indicative Map of Cessation of New Permits (PIPPIB) for Primary Natural Forests and Peatlands for the period of 2-year 2022 contained in the 1:220,000 scale Map, information was obtained that there was no peat in the plots of land managed by farmers who are members of KPPPEL. Based on the results of field visits and interviews with 15 sample farmers, information was obtained that none of the land parcels of the association's members were on peatland, all of the land parcels of the association's members were on mineral land.		
	Status: Comply	
4.5 Plots on peat are replanted only on areas with low risk of flooding or saline intrusion as demonstrated by a risk assessment.		
Do any smallholders within the group have plans for replanting plots that are located on peat? If no, SKIP		
Eligibility, MS-A & MS-B Based on the verification of the map of farmers' land distribution, APL, and the Indicative Map of Cessation of New Permits (PIPPIB) for Primary Natural Forests and Peatlands for the period of 2-year 2022 contained in the 1:220,000 scale Map, information was obtained that there was no peat in the plots of land managed by farmers who are members of KPPPEL. Based on the results of field visits and interviews with 15 sample farmers, information was obtained that none of the land parcels of the association's members were on peatland, all of the land parcels of the association's members were on mineral land.		
	Status: Comply	

4.6		
Fire is not used on the oil palm plot for preparing land or for pest control, nor open fire for waste management on the farm.		
Eligibility, MS-A and MS-B		
Every farmer who will become a member of KPPPEL is required to make a statement letter and sign it. In the statement, commitment number 16 states that there is no burning for land preparation, or pest control, or waste management.		
Based on the results of field visits and interviews with 15 sample farmers, it is known that there is no burning activity in pest control and waste management. It is also known that there were no traces of burning during the land clearing owned by farmers with the planting year 2018. The farmers interviewed also understood about not clearing land, controlling pests and managing waste using fire. They said that they had signed a commitment in this regard when they joined KPPPEL.		
	Status: Comply	
4.7		
Riparian buffer zones are identified and managed to ensure they are maintained and/or enhanced.		
Eligibility		
KPPPEL has conducted an HCV Assessment Report, which was carried out by the Green Nature Association (A-Hi) in March 2022. It is known that the river boundaries contained in HCV 4 are located in several areas of KPPPEL member growers. The results of field observations in the plantation area with the initials MND, it is known that there is a Batang Merundang river which empties into the Si Seberuk River. However, the border area is in a condition already planted with the 2015 planting year. KPPPEL has shown a statement by KPPPEL member growers referring to attachment 2 of RISS NI 2022, which among other things states that they do not carry out new plantings/expansion of existing plantations in primary forest, HCV area, HCS forest, river border area, or steep slopes (more of 25° or as provided for in national interpretations).		
MS-A		
The grower has carried out training related to HCV. This is shown in the GAP (Good Agricultural Practices) training documents such as plant maintenance, sprouting, harvesting, OHS, and HCV which was held on March 5, 2022, with the Assistant of PT Agro Andalan as a resource. Some of the topics discussed included maintaining and conserving HCV and HCS forests, preventing human-animal conflicts, as well as rare, threatened, and critical species. The results of field observations also revealed that there were posters related to the prohibition of hunting for protected animals that were found on several roadsides in Engkersik village.		
MS-B		
Based on interviews and field observations on field member with the initials MND revealed that the border of the Batang Merundang River which empties into the Seberuk River was sprayed using the pesticide Paratop. It is known from the KPPPEL HCV Report, that the Batang Merundang River and the Seberuk River have been identified as HCV 4.		
Based on the above, it is known that not all farmers have maintained river boundaries by not applying spray using pesticides. This becomes a Nonconformity No. 2022.05.		
	Status: Nonconformity No. 2022.05	
4.8		
Pesticides are used in ways that do not endanger health of workers, family, communities or the environment.		
Eligibility		
It has been shown that the statements of farmers who are members of KPPPEL include avoiding paraquat and pesticides class 1A and 1B, and those entering the Sockholm/Rotterdam convection gradually.		
MS-A		
Based on interviews with 15 farmers who are members of KPPPEL revealed that some farmers have understood the prohibition on the use of paraquat, and others have not understood the prohibition.		
MS-B		
<ul style="list-style-type: none">• The results of interviews with 15 KPPEL member farmers, it is known that they still use paraquat with the trademark paratop in weed control.• The results of interviews and field observations on plantations with the initials MND revealed that the border of the Batang Merundang River which empties into the Seberuk River was sprayed using the pesticide Paratop.• The results of observations in the LB3 warehouse revealed that there was paratop waste packaging. The results of the study of the LB3 warehouse checklist document revealed that there were traces of paratop packaging that came in on September 4, 2022.		

- The results of the study of the KPPPEL member's Independent Smallholder Record Book document, it is known that:
- Farmers with the initials AR who joined on September 10, 2021, used Gramoxon in December 2021 as many as 6 liters and Paratop in April 2022 as many as 6.8 liters.
- Farmers with the initials KL who join on June 19, 2021, use 3 liters of paratopes in June 2021 and 3 liters of gramoxon in January 2022.

Based on this evidence, it is known that KPPPEL member planters are still using herbicide with the active ingredient paraquat in weed control which is not in accordance with the demand for this TC-B indicator. This becomes a Nonconformity No. 2022.06.

Status: Nonconformity No. 2022.06

4.9

The group and smallholders manage pests, diseases, weeds and invasive introduced species using appropriate techniques, including but not limited to Integrated Pest Management (IPM) techniques.

Eligibility

-

MS-A

KPPPEL demonstrates training to member farmers, as follows:

- IPM and fertilization, on 20 November 2021, with the Head of Plantation Division of the Sekadau District Food Security, Agriculture and Fisheries as a resource.
- The use of pesticides, waste management so as not to pollute the environment, and first aid in case of poisoning, on 20 November 2021 for members of the Cooperative, with the speaker being the Head of Extension for the Food, Agriculture and Fisheries Security Office of Sekadau District.

MS-B

Based on field observations show that KPPPEL has developed beneficial plant such as *Turnera subulata* as an effort of IPM. Based on field observations and interviews with 15 sample farmers, it is known that there are no pests and diseases. From field observations also found that there were no pest attacks and former pest attacks.

Status: Comply

3.2 Conformity Checklist of Certificate and Trademark Use

1.	Evidence of permission or approval certificate and trademark from Certification Body which submitted by Client.
MS-B	This matter will be verification on ASA
	Status: Comply
2.	Implementation of certificate and trademark used by Client comply with size and type (shape) against Guideline of trademark Use
MS-B	This matter will be verification on ASA
	Status: Comply
3.	Implementation of Certificate and Trademark is not used on product
MS-B	This matter will be verification on ASA
	Status: Comply
4.	Controlling of Certificate and Trademark, including withdrawing inappropriate trademark.
MS-B	This matter will be verification on ASA
	Status: Comply

3.3. Identification of Findings, Corrective Action, Observations, Opportunity for Improvement and Noteworthy Positive Components.

3.3.1 Identification of Findings, Corrective Actions and Observations at MS-B Assessment

NCR No.	: 2022.01	Issued by	: Hasiholan Sihombing
Date Issued	: 3 November 2022	Time Limit	: 2 November 2023
NC Grade	: Major	Date of Closing	: 21 January 2023
Standard Ref. & Requirement	<p>A.2.3 E: A group annual training plan is available covering the RSPO ISH Standard, group management (which includes group objectives, structure, relevant procedures and the certification process) and other topics as outlined in the ISH Standard.</p> <p>MS-A: The group manager implements a phased approach to ensure members have progressively attended training on the ISH Standard, group management and other topics as outlined in the ISH Standard according to the group annual training plan.</p> <p>MS-B: All members attended training and can demonstrate understanding of the ISH Standard, group management and certification requirements including awareness on BMPs, HCV, environmental protection, social welfare of workers and business operations.</p>		
<p>Evidence observed (filled by auditor):</p> <p>MS-B: Based on the results of the study of the training realization document, it is known that not all KPPPEL members have participated in the training that has been programmed. Then based on the results of interviews with 15 KPPPEL members as samples, it was found that 3 of them admitted that they had never received training so they did not understand the RSPO independent smallholder standard.</p> <p>Non-Conformance Description (filled by auditor):</p> <p>The cooperative has not been able to demonstrate sufficient evidence that all members have attended training and are able to demonstrate understanding of the RSPO Independent Smallholder Standard.</p>			
<p>Root Cause Analysis (filled by organization audited):</p> <p>The different work activities of farmers in carrying out harvesting, fertilizing, tending and others are the cause of the difficulty of gathering farmers at one training momentum simultaneously in training or outreach activities.</p>			
<p>Correction (filled by organization audited):</p> <p>KPPPEL invites farmers to attend the dissemination of the standards of independent smallholders resulting from the national interpretation at the cooperative office.</p>			
<p>Corrective Action (filled by organization audited):</p> <p>Conduct socialization regarding the Indonesian national interpretation of the Indonesian national interpretation of the independent smallholders standard RISS 2020 to farmers who are members of KPPPEL.</p>			
<p>Assessor Evaluation and Conclusion (filled by auditor):</p> <p>Auditor Verification dated 21 January 2023 The unit of certification has carried out root cause analysis and corrective action on the root cause analysis. Then, also sent proof of improvement in the form of:</p>			

- Minutes of correcting audit findings which were held on November 26, 2022 accompanied by photos of the meeting in MS Word file format.
- List of attendees informing that there were 116 farmers who took part in the socialization.

Based on this, the discrepancies in this indicator can be declared fulfilled and the understanding of cooperative member farmers will be observed again in the next assessment.

Verified by : Hasiholan Sihombing

NCR No.	: 2022.02	Issued by	: Sentot Adi Subandono
Date Issued	: 3 November 2022	Time Limit	: 2 November 2023
NC Grade	: Major	Date of Closing	: 20 February 2023
Standard Ref. & Requirement	<p>C.2.1 E: A group management plan is available, which includes:</p> <ul style="list-style-type: none"> • training/capacity building plans to improve productivity of group members • an approach to strengthen links within the supply chain • plan for continuous improvement projects (i.e. on waste, soil, etc.), if any <p>MS-A: The group management plan is implemented and reviewed at least annually.</p> <p>MS-B: The group manager demonstrates the group's compliance with this ISH Standard.</p>		
<p>Evidence observed (filled by auditor):</p> <p>MS-B Cooperatives show reports on training implementation, for example GAP training report on Fertilization and Spraying based on RISS principles and criteria, dated February 12th, 2022 for Cooperative members, with speakers from SPKS. However, based on the results of field observations and interviews with smallholders who were used as sampling, it is known that:</p> <ul style="list-style-type: none"> • At the location of KPPPEL member farmers with the initials MND, there is still the use of paraquat with the paratop brand. • The average number of farmers interviewed was still using paratopes in spraying weeds on their land. • In the hazardous and toxic waste warehouse, it was discovered that there were traces of paraquat packaging with the paratop brand. • The results of the study of the hazardous and toxic waste warehouse checklist document revealed that there were traces of paratop packaging that came in on September 4th, 2022. <p>Non-Conformance Description (filled by auditor):</p> <p>Based on the things above, it is known that the group manager has not been able to prove the group's compliance with all these independent smallholder standards.</p> <p>Root Cause Analysis (filled by organization audited):</p> <p>The commitment not to use paraquat, information on where hazardous toxic and waste is stored and the prohibition on the use of herbicides have been conveyed to farmers through various training/socialization activities, including through farmer groups. However, in practice it is still found that some farmers still use paraquat. This is because the supervisory function of the KPPPEL management and groups is still weak, and the awareness of farmers is still minimal.</p>			

Changes in culture and habits from previously using paraquat to no longer need time, while strengthening awareness of shared commitment between farmers and farmer groups. Although slowly, the farmers are committed to no longer using paraquat. Spaces for transferring knowledge through farmer groups in the future will continue to be strengthened in order to construct farmer understanding, so that in the future awareness and knowledge will be formed by themselves.

Correction (filled by organization audited):

- KPPPEL management ensures farmers carry out compliance commitments.
- Provide socialization regarding the standards of independent smallholders to farmers.
- Provide socialization regarding the prohibition of using paraquat.
- Cooperative management and groups monitor to ensure that farmers comply with the standards of independent smallholders

Corrective Action (filled by organization audited):

- Maximizing the role of farmer group administrators and cooperative administrators in providing supervision and sanctions to farmers who violate commitments.
- Encouraging farmers to carry out their commitment not to use paraquat and to protect the environment.
- Providing outreach to farmers through farmer groups regarding the standards of independent smallholders.

Assessor Evaluation and Conclusion (filled by auditor):

Auditor Verification dated 21 January 2023

KPPPEL shows evidence of improvement, as follows:

- Root cause analysis, if summarized:
 - Lack of supervision from farmer groups and KPPPEL
 - Awareness of farmers is still minimal:
 - ➔ It has not been explained why members' awareness is still minimal and understanding of the risks of using paraquat. please add/re-identify the root cause analysis.
- Correction is acceptable. KPPPEL showed evidence of improvement in the form of minutes of socialization of the RSPO PnC on 26 November 2022 which was attended by 116 participants.
- Corrective action is an improvement plan that is carried out based on root cause analysis, so that the non-conformity does not recur. Please re-identify the corrective action regarding this discrepancy.

Based on verified evidence, it is stated that the discrepancy has not been fulfilled.

Auditor Verification dated 31 January 2023

- Root cause analysis received
- Correction has been accepted
- Corrective action has been received.
- Please show proof of improvement other than what has been shown before.

Based on verified evidence, it is stated that the discrepancy has not been fulfilled.

Auditor Verification dated 3 February 2023

KPPPEL shows additional evidence of improvement in the form of:

- Commitment letter from cooperative management, members, and representatives of the Harapan Baru, Sejahtera Bersama, Bunawa, Lubuk Batu, Maju Jaya, Segarik Raya, Sepayang Mandiri, and Sungai Antu member groups dated January 16, 2023 regarding a commitment not to use paraquat, and to maintain environmental sustainability in accordance with independent smallholder standard.
- The KPPPEL work program for the period November 2022 - October 2023 which informs, among others, that there is a work program for monitoring cooperative members every month in the 4th week, but has not shown evidence of its implementation.

Based on verified evidence, it is stated that the discrepancy has not been fulfilled.

Auditor Verification dated 20 February 2023

KPPPEL shows evidence of improvement. The representative of the cooperative explained that monitoring of cooperative members was carried out by socializing and confirming the use of pesticides which was carried out by filling out a monitoring form for the use of chemicals used by farmer members of the Kopbun. This will be observed again in the next audit.

Based on the evidence shown, the discrepancy is declared fulfilled and will be observed again at the next audit.

Verified by : Sentot Adi Subandono

NCR No.	:	2022.03	Issued by	:	Hasiholan Sihombing
Date Issued	:	3 November 2022	Time Limit	:	2 November 2023
NC Grade	:	Major	Date of Closing	:	21 January 2023
Standard Ref. & Requirement	:	<p>D.3.1</p> <p>E:</p> <p>The group and group manager have agreed on how the premiums should be used and the agreement is recorded and communicated to the group members. Prices, premiums, and timing of premium payment are clearly communicated and transparent to all group members. Premiums disbursed to members at all stages are recorded and the premiums are paid in a timely and convenient manner.</p> <p>MS-A:</p> <p>The disbursement of premiums, including price and timing of the disbursement to group members is clearly recorded.</p> <p>MS-B:</p> <p>Same as D3.1 MS A.</p>			
Evidence observed (filled by auditor):					
<p>Eligibility</p> <p>There are several facts found during the audit activity, namely:</p> <ul style="list-style-type: none">• KPPPEL has RSPO Credit Incentive Distribution SOP No. 004/SOP/ICS/KOPBUN-PEL/III/2022 dated March 2022 determined by the ICS Manager, which explains the distribution of incentives from the sale of RSPO credit that will be obtained after obtaining RSPO certification.• The results of interviews with 15 members of KPPPEL, it is known that after the Cooperatives get RSPO certification, members will get more benefits from credit sales incentives, but information related to the contents of the SOP related to these benefits/incentives has not been socialized by the management of the Cooperative or ICS.• The results of interviews with the ICS Manager and KPPPEL management, it is known that information related to obtaining benefits has been conveyed to members, but the contents of the SOP related to the benefits/incentives have not been known by the members. This is because the cooperative has not yet received an RSPO certificate, so this has not been further socialized to members.					
Non-Conformance Description (filled by auditor):					
KPPPEL has not been able to show evidence that the plan for the distribution and use of benefits/incentives (premiums) that have been set by the Group Manager and management has been transparently disseminated to all members of the cooperative.					
Root Cause Analysis (filled by organization audited):					
The dissemination of the SOP for the distribution of incentives to all members has not been carried out due to the ignorance of the cooperative management and ICS.					
Correction (filled by organization audited):					
Conduct socialization of distribution of incentive credit based on SOP to all members.					

Corrective Action (filled by organization audited): Providing understanding regarding the RSPO PnC to cooperative and ICS management as a form of capacity building.	
Assessor Evaluation and Conclusion (filled by auditor): Auditor Verification dated 21 Januari 2023 The unit of certification has carried out root cause analysis and corrective action on the root cause analysis. Then, also sent proof of improvement in the form of: <ul style="list-style-type: none"> - Minutes of correcting audit findings which were held on November 26, 2022 accompanied by photos of the meeting in MS Word file format. - List of attendees informing that there were 116 farmers who took part in the socialization. - SOP for Distribution of RSPO Credit Incentives No. 004/SOP/ICS/KOPBUN-PEL/III/2022 dated March 2022 Based on this, then the discrepancy in this indicator can be declared Fulfilled and will be observed again the understanding of farmer members of the cooperative in the next assessment.	
Verified by	: Hasiholan Sihombing

NCR No.	: 2022.04	Issued by	: Hasiholan Sihombing
Date Issued	: 3 November 2022	Time Limit	: 2 November 2023
NC Grade	: Major	Date of Closing	: 20 February 2023
Standard Ref. & Requirement	2.1 E: Smallholders provide the coordinates or maps of their plots and evidence of ownership, or rights to use the land. (Reference Indicator 1.1.E, Annex 2). MS-A: Smallholders can demonstrate legal ownership or native and/or customary rights to use the land or demonstrate that they are in the process of legalisation of that right. MS-B: Smallholders plots are clearly and visibly demarcated and maintained, and the smallholders are operating only within these boundaries.		
Evidence observed (filled by auditor): MS-B Based on field observations of the 15 smallholders that were used as sampling, it is known that there are no clear boundary markers that show the boundaries of the smallholder's land with other lands. Then from interviews with the ICS Manager and the Cooperative management, it was informed that the boundary markers have not been installed and are currently still based on natural boundaries.			
Non-Conformance Description (filled by auditor): The cooperative has not yet been able to show sufficient evidence that every plot of land of the smallholders who are members of the cooperative already has a clear demarcation between their land and other lands.			
Root Cause Analysis (filled by organization audited): Making stakes has not been done due to limited funds in procuring stakes. Because so far the funding source for cooperatives to prepare the stages and fulfill documents has come from a second party, in this case the SPKS assistance organization.			

Correction (filled by organization audited):

- Identification of the number of stakes for each farmer.
- Procurement and installation of stakes in the cooperative member's garden.
- From the results of identification with reference to the map, it was found that the number of stakes needed by farmers was 500. However, due to budget constraints, a new benchmark was set for several farmers and in the future all farmers will be added if they have received RSPO credit incentives.
- The plan to fulfill the installation of 100% installed boundary stakes, namely in March 2023 (based on KPPPEL's 2022-2023 work plan/program).

Corrective Action (filled by organization audited):

- Cooperative management, ICS and farmer groups coordinate with cooperative members to install stakes in each farmer's garden.

Currently the cooperative can only procure 50 stakes for 8 farmers. The shortage of stakes will be resolved once the cooperative has received RSPO credit incentives

Assessor Evaluation and Conclusion (filled by auditor):
Auditor Verification dated 21 Januari 2023

The unit of certification has carried out root cause analysis and corrective action on the root cause analysis. Then, also sent proof of improvement in the form of:

- Minutes of the installation of boundary stakes accompanied by several photos of examples of the installation of stakes by member farmers.
- SOP for Making and Installing Landmarks No. 033/SOP/ICS/KOPBUN-PEL/III/2022.

However, there are still auditor questions in the correction and corrective action column that need to be responded to by the unit of certification, such as:

- Identification of the number of stakes for each farmer has not been shown. Of the 149 farmers who are members of KPPPEL, what are the conditions, situations and progress of installing the plot boundary markers? Because during the audit, there were absolutely no plot boundaries installed.
- Corrective action is corrective action on the root of the problem that has been analyzed. The root cause analysis above has been presented, what are the corrective actions to address the root cause?

Based on this, the discrepancies in this indicator are still NOT FULFILLED.

Auditor Verification dated 31 Januari 2023

The root cause analysis and corrective actions have been received, but there are still questions in the correction column.

Based on this, the discrepancies in this indicator are still NOT FULFILLED.

Auditor Verification dated 4 February 2023

There are still questions in the correction column. Recalling that the sound of the request for indicators at this stage of the MS-B RISS audit is "The smallholder plots of land are clearly demarcated and maintained, and the growers only operate within these boundaries" where the growers define their land boundaries clearly and are maintained, which means there is no demand The standard in making and determining the boundary, can be made of cement, from PVC pipe, wood, plank, bamboo or from anything that can show boundaries clearly and are maintained. Please discuss again with the management of the cooperative and its members to decide to make the boundary markers from materials that do not incur large costs so that the request for this indicator can be fulfilled (because KPPPEL has entered the MS-B stage of RISS).

Auditor Verification dated 20 February 2023

KPPPEL shows the timeline for the plan to fulfill the installation of 100% installed boundary stakes, namely in March 2023 (based on KPPPEL's 2022-2023 work plan/program). This will be confirmed during the next audit.

Based on this, the non-compliance with this indicator can be declared Fulfilled and the implementation of the plan will be observed again in the next assessment.

Verified by : Hasiholan Sihombing

NCR No.	:	2022.05	Issued by	:	Sentot Adi Subandono
Date Issued	:	3 November 2022	Time Limit	:	2 November 2023
NC Grade	:	Major	Date of Closing	:	20 February 2023
Standard Ref. & Requirement	:	<p>4.7 E: Group manager identifies riparian buffer zones within the group and smallholders commit to no new planting in riparian zones (reference 1.1.E, Annex 2)</p> <p>MS-A: Smallholders complete training on and are aware of riparian buffer zone management, and the group has an action plan to maintain and/or enhance riparian buffer zones.</p> <p>MS-B: Smallholders maintain and/or enhance riparian buffer zone areas.</p>			
<p>Evidence observed (filled by auditor):</p> <p>MS-B: The results of interviews and field observations on plantations with the initials MND revealed that the border of the Batang Merundang River which empties into the Seberuk River was sprayed using the pesticide Paratop. It is known from the KPPPEL HCV Report, that the Batang Merundang River and the Seberuk River have been identified as HCV 4.</p> <p>Non-Conformance Description (filled by auditor):</p> <p>Based on the above, it is known that not all farmers have maintained river boundaries.</p>					
<p>Root Cause Analysis (filled by organization audited):</p> <p>Socialization regarding the prohibition of spraying into rivers has been carried out, and even prohibitions have also been posted at several points. But the farmer with the initials MND was not present in the outreach activities so he was not aware of the ban.</p>					
<p>Correction (filled by organization audited):</p> <ul style="list-style-type: none"> - KPPPEL management coordinates with group leaders to carry out outreach meetings. - The group administrator ensures that each member does not spray. 					
<p>Corrective Action (filled by organization audited):</p> <ul style="list-style-type: none"> - KPPPEL management provides understanding to farmers with the initials MND and all members about river maintenance - KPPPEL management monitors the river area regularly every 3 (three) months - KPPPEL management gives sanctions to members who violate the commitment to maintain environmental sustainability <p>After receiving the RSPO credit incentive, KPPPEL will add and install prohibition notices in farmers' gardens which are crossed by rivers</p>					
<p>Assessor Evaluation and Conclusion (filled by auditor):</p> <p>Auditor Verification dated 21 Januari 2023 KPPPEL shows evidence of improvement, as follows:</p> <ul style="list-style-type: none"> • Root cause analysis: The farmer with the initials MND was not present in the socialization activity. Already received • Correction is acceptable. KPPPEL showed evidence of improvement in the form of socialization minutes related to river bank maintenance on 26 November 2022 which was attended by 116 participants by not spraying and disposing of garbage. KPPPEL 					

has also shown procedure number 001/SOP/ICS/KOPBUN-PEL/III/2022 regarding the management of river riparian areas.

- Corrective action is an improvement plan that is carried out based on root cause analysis, so that the non-conformity does not recur. Please re-identify the corrective action regarding this discrepancy.

Based on verified evidence, it is stated that the discrepancy has not been fulfilled.

Auditor Verification dated 31 Januari 2023

Corrective action has been received. Please show proof of improvement other than what has been shown before.

Based on verified evidence, it is stated that the discrepancy has not been fulfilled.

Auditor Verification dated 3 February 2023

KPPPEL showed additional evidence of improvement in the form of the KPPPEL work program for the period November 2022 - October 2023 which informed them that there is an HCV monitoring work program planned once a year in the 2nd week of May 2023. corrective action identified by KPPPEL.

Based on verified evidence, it is stated that the discrepancy has not been fulfilled.

Auditor Verification dated 20 February 2023

KPPPEL shows evidence of improvement, namely as follows:

- Revision of the 2022 – 2023 Work Plan dated 17 February 2023 which has added Monitoring of the river riparian area which is planned every 2nd week in March, May, July and September 2023.
- Documentation of monitoring the Spring riverbank area at the Lubuk Batu Farmers Group with the initials Mn, on January 28 2023. From the results of photo observations, it was found that there was no used pesticide packaging in the riverbank area.

Based on the evidence shown, the discrepancy is declared fulfilled and will be observed again at the next audit.

Verified by : Sentot Adi Subandono

NCR No.	:	2022.06	Issued by	:	Sentot Adi Subandono
Date Issued	:	3 November 2022	Time Limit	:	2 November 2023
NC Grade	:	Major	Date of Closing	:	20 February 2023
Standard Ref. & Requirement	:	<p>4.8</p> <p>E:</p> <p>Smallholders commit to phase out paraquat and pesticides categorised as WHO Class 1A or 1B and those listed by the Stockholm or Rotterdam Conventions by:</p> <ul style="list-style-type: none"> • immediately stop purchasing these pesticides • phasing out use of remaining stock by MS A • providing information for the group manager to keep record of pesticide purchase and use (reference 1.1.E, Annex 2) <p>MS-A:</p> <p>Smallholders complete training on BMPs for pesticides including pesticide usage, awareness on risks for pregnant and breastfeeding women and young workers; storage and disposal; paraquat and pesticides listed by WHO Class 1A or 1B, the Stockholm or Rotterdam Conventions (and in compliance with 3.5).</p> <p>MS-B:</p> <p>Smallholders implement BMPs for all pesticide use, including prohibiting use of pesticides by pregnant and breastfeeding women and young workers, and exclusion of paraquat and</p>			

	pesticides that are categorised as WHO Class 1A or 1B, or those listed by the Stockholm or Rotterdam Conventions, unless when authorised by relevant authorities for pest outbreaks.
<p>Evidence observed (filled by auditor):</p> <p>MS-B:</p> <ul style="list-style-type: none"> The results of interviews with 15 farmers who are members of KPPPEL, it is known that they still use paraquat with the trademark paratop in weed control. The results of interviews and field observations on plantations with the initials MND revealed that the border of the Batang Merundang River which empties into the Seberuk River was sprayed using the pesticide Paratop. The results of observations in the hazardous and toxic waste warehouse revealed that there was paratop waste packaging. The results of the study of the hazardous and toxic waste warehouse checklist document revealed that there were traces of paratop packaging that came in on September 4th, 2022. The results of the study of the KPPPEL member's Independent Smallholder Record Book document, it is known that: <ul style="list-style-type: none"> Farmers with the initials AR who joined on September 10th, 2021, used Gramoxon in December 2021 as many as 6 liters and Paratop in April 2022 as many as 6.8 liters. Farmers with the initials KL who join on June 19th, 2021, use 3 liters of paratopes in June 2021 and 3 liters of grammoxon in January 2022. <p>Non-Conformance Description (filled by auditor):</p> <p>Based on this evidence, it is known that KPPPEL member planters are still using herbicides with the active ingredient paraquat in weed control which is not in accordance with the demand for this MS-B indicator.</p>	
<p>Root Cause Analysis (filled by organization audited):</p> <p>Socialization regarding the prohibition of using paraquat active ingredient herbicides has been carried out to farmers who are members of KPPPEL. The commitment not to use also exists. However, conditions in the field with changes in natural conditions according to farmers are very profitable if sprayed so this is done without the knowledge of the KPPPEL management.</p> <p>First, the lack of understanding of farmers regarding the risks of using pesticides. Even though socialization has been carried out, not all farmers can immediately understand what is conveyed. Educational background and age are the causes of farmers' incomprehension.</p> <p>Second, the problem of cost. The low price of palm oil and the high price of fertilizer is one of the reasons why farmers choose to spray because it costs less, compared to manual slashing or chopping.</p>	
<p>Correction (filled by organization audited):</p> <ul style="list-style-type: none"> Encouraging farmers to adhere to and carry out commitments not to use paraquat-based herbicides. ICS through group administrators controls farmers not to use herbicides with active paraquat ingredients. Provide socialization to farmers about the dangers of using paraquat active ingredient herbicides. 	
<p>Corrective Action (filled by organization audited):</p> <ul style="list-style-type: none"> Providing socialization on the dangers of using paraquat active ingredient herbicides to farmers, cooperative management and ICS. Management of cooperatives and farmer groups provide understanding with various methods, be it through routine meetings or door to door to members. After receiving the RSPO credit incentive, KPPPEL will procure grass-clearing machines which will be given to each group to be used to clear members' areas. 	
<p>Assessor Evaluation and Conclusion (filled by auditor):</p> <p>Auditor Verification dated 21 Januari 2023 KPPPEL shows evidence of improvement, as follows:</p>	

- Root cause analysis, if summarized:
 - Farmers have received socialization on the prohibition of using paraquat and have signed a commitment not to use paraquat, but they are still using paraquat without the knowledge of the KPPPEL management.
 - ➔ It has not been explained why members' awareness is still minimal and understanding of the risks of using paraquat. please add/re-identify the root cause analysis.
- Correction is acceptable. KPPPEL showed evidence of improvement in the form of minutes of socialization of the RSPO PnC on 26 November 2022 which was attended by 116 participants. However, there has been no evidence of ICS control in the use of pesticides.
- Corrective action is an improvement plan that is carried out based on root cause analysis, so that the non-conformity does not recur. Please re-identify the corrective action related to this discrepancy, if there is a change.

Based on verified evidence, it is stated that the discrepancy has not been fulfilled.

Auditor Verification dated 31 Januari 2023

- Root cause analysis received.
- Correction has been accepted
- Corrective action has been received. Will KPPPEL members not use non-paraquat pesticides in the future?
- Please show proof of improvement other than what has been shown before.

Based on verified evidence, it is stated that the discrepancy has not been fulfilled.

Auditor Verification dated 3 February 2023

KPPPEL shows additional evidence of improvement in the form of:

- Commitment letter from cooperative management, farmers, and representatives of the Harapan Baru, Sejahtera Bersama, Bunawa, Lubuk Batu, Maju Jaya, Segarik Raya, Sepayang Mandiri, and Sungai Antu farmer groups dated January 16, 2023 regarding a commitment not to use paraquat, and to maintain environmental sustainability in accordance with independent smallholder standard.
- KPPPEL work program for the period November 2022 - October 2023 which informs that there is a work program for monitoring cooperative members every month in the 4th week, but no evidence of its implementation has been shown
- There has been no answer regarding the Auditor's question dated January 31, 2023, regarding the use of non-paraquat pesticides.

Based on verified evidence, it is stated that the discrepancy has not been fulfilled.

Auditor Verification dated 20 February 23

KPPPEL shows evidence of improvement, namely as follows:

- Statement letter from ICS manager, Head of Cooperative, and Smallholder Representative dated 17 February 2023 regarding commitment not to use pesticides containing active paraquat and other types of chemicals that are prohibited in the RSPO independent smallholder standards.
- Cooperative representatives explained that monitoring of cooperative members is carried out by socializing and confirming the use of pesticides by filling out monitoring forms for the use of chemicals used by farmers who are members of the KPPPEL. This will be observed again in the next audit.

Based on the evidence shown, the discrepancy is declared fulfilled and will be observed again at the next audit.

Verified by	:	Sentot Adi Subandono
--------------------	---	-----------------------------

3.3.2 Opportunity for Improvement



No	Ref. Std.	Description
1	2.1	<p>MS-A: Smallholders can demonstrate legal ownership or native and/or customary rights to use the land or demonstrate that they are in the process of legalisation of that right.</p> <p>The results of the document review found that 4 independent smallholders who were members of KPPPEL out of 149 members were still in the process of obtaining SPPL at the relevant agency. Cooperatives are encouraged to ensure that the acquisition of SPPL for the 4 farmers can run positively.</p>

3.3.3. Noteworthy Positive Components

No	Description
1	The commitment of independent smallholders who are members of the Koperasi Produsen Perkebunan Persada Engkersik Lestari to apply the principles of sustainable palm oil management.

3.4 Summary of Arising Issues from Public and Auditor Verification.

Public Issues (Institution/ NGO/Community)	Auditor Verification
<p>Department of Plantation, Food Security, Agriculture and Fisheries Agency at Sekadau District</p> <ul style="list-style-type: none"> Representatives from the agency regularly visit the KPPPEL, a visit in 2022 has been carried out. All farmers have <i>STDB</i>. There are no negative issues from the community around the cooperative related to disturbances caused by the cooperative's operational activities, be it land disputes or other negative issues. Cooperatives already have adequate fire prevention and control facilities and infrastructure, in addition there is no history of fire incidents in operational areas within the last 1 year. The agency has not yet made a routine reporting format for independent smallholders so that farmers/cooperatives are not required to make regular reports every year. However, communication between agencies and cooperative has been well established. 	<p>There are no negative issues from Department of Plantation, Food Security, Agriculture and Fisheries Agency.</p>
<p>Environmental Services at Sekadau District</p> <ul style="list-style-type: none"> Farmers already have <i>SPPL</i> KPPPEL accompanied by <i>Serikat Petani Kelapa Sawit (SPKS)</i> has coordinated with agency. There were no cases of land fires carried out by KPPPEL members. 	<p>There are no negative issues from Environmental Services.</p>
<p>Land Office of Sekadau District</p> <ul style="list-style-type: none"> There is no information regarding land disputes that enter the Sekadau District Land Office. There are farmers in KPPPEL who have already taken care of land certificates to become Free Hold Title (<i>SHM</i>). 	<p>There was no negative information submitted by the Sekadau District Land Office.</p>

4.0	CERTIFIED ORGANISATION'S ACKNOWLEDGEMENT OF INTERNAL RESPONSIBILITY
4.1	Formal Sign-off of Assessment Findings
	<p>Hereunder sign by management representative from inspected company to acknowledge a field assessment and agree for all content explained in this assessment report, included of non-compliance findings.</p> <p>Signed on behalf of:</p> <div><div><p>Koperasi Produsen Perkebunan Persada Engkersik Lestari ICS Manager</p><p><u>Yohanes Kiyai</u> Monday, 20 February 2023</p></div><div><p>MUTU International Lead Auditor</p><p><u>Hasiholan Sihombing</u> Monday, 20 February 2023</p></div></div>

Appendix 1. List of Stakeholder Contacted in the RSPO Certification Process

No	Institution/ NGO/ Community	Address	Phone/ Email	Form of Communication	Date of Contact	Response	
						Yes	No
1	Department of Plantation, Food Security, Agriculture and Fisheries Agency	Sekadau District	-	Phone	1 November 2022	✓	
2	Environmental Services	Sekadau District	-	Phone	2 November 2022	✓	
3	Land Office	Sekadau District	-	Phone	2 November 2022	✓	
4	11 Farmers Sampling from Engkersik Village	Sekadau District	-	Direct Interview	1 November 2022	✓	
5	4 Farmers Sampling from Setawar Village	Sekadau District	-	Direct Interview	1 November 2022	✓	
6	Sawit Watch	Indonesia	info@sawitwatch.or.id	Email	24 October 2022		✓
7	WWF	Indonesia	wwf-indonesia@wwf.or.id	Email	24 October 2022		✓
8	WALHI	Indonesia	informasi@walhi.or.id	Email	24 October 2022		✓
9	AMAN	Indonesia	rumahaman@cbn.net.id	Email	24 October 2022		✓

Appendix 2. Assessment Program

DATE	October 31 st – November 4 th , 2022	
PLANNED TIME	PROCESSES / CLAUSE TO BE AUDITED	AUDITOR
Monday, 31 October 2022		
06.30 – 08.05	JAKARTA → PONTIANAK	All Auditor
08.05 – 15.30	From the airport to the audit location	All Auditor
16.00 – 17.00	OPENING MEETING Auditor Team Speech (Introduction, Audit Objective, Audit Scope, Audit Plan Discussion, Determine of Audit Sample, Transparency and Confidentiality Clarification)	All Auditor
Tuesday, 1 November 2022		
08.00 – 09.00	Stakeholders consultation by phone to related agencies at Sekadau District	HHS / SAS / SDU
09.00 – 12.00	<ul style="list-style-type: none"> Public consultation with village officials around the audit site Field Visits to Operational Activities and Supporting Facilities on farmer's land used as sampling 	HHS / SAS / SDU
12.00 – 14.00	Break	
14.00 – 17.00	<ul style="list-style-type: none"> Continue Field Visits to Operational Activities and Supporting Facilities Document Verification 	HHS / SAS / SDU
Wednesday, 2 November 2022		
08.00 – 12.00	Document Verification	All Auditor
12.00 – 14.00	Break	
14.00 – 16.00	Document Verification	All Auditor
Thursday, 3 November 2022		
08.00 – 10.00	Document Verification	All Auditor
10.00 – 11.00	Interim Meeting (closing meeting preparation)	All Auditor
11.00 – 12.00	CLOSING MEETING <ul style="list-style-type: none"> Presentation of audit findings (Noteworthy Positive Component, Non-Conformities, OFI, Timeline of CAR's, Conclusion) Comments, Responses and Questions 	All Auditor
13.00 – 19.00	Auditor travels from audit site to Pontianak	All Auditor
Friday, 4 November 2022		
06.30 – 07.00	Auditor travels from hotel to Airport	All Auditor
08.50 – 10.25	PONTIANAK – JAKARTA	All Auditor

Appendix 3. Smallholder Data

No Member	Smallholder Name	Location	Coordinate		Area (Ha)		Actual FFB production (MT/Year)	Yield (MT/Ha/Year)	Projection FFB Production (MT/Year)	Yield (MT/Ha/Year)	Date of Joining	Date of Leaving
			Latitude	Longitude	Total	Production						
1	Nurhidayah Susanti	Engkersik Village, Sekadau Hilir Sub District, Sekadau District, Kalimantan Barat Province, Indonesia	S 0°6' 01"	E 111°7'24"	0.98	0.98	8.51	8.69	8.51	8.69	15/11/2021	
2	Sidin	Engkersik Village, Sekadau Hilir Sub District, Sekadau District, Kalimantan Barat Province, Indonesia	S 0°6'13"	E 111°7'18"	1.30	1.30	10.96	8.43	10.96	8.43	31/10/2021	
3	Safar	Engkersik Village, Sekadau Hilir Sub District, Sekadau District, Kalimantan Barat Province, Indonesia	S 0°4'6"	E 111°4'13"	1.10	1.10	4.90	4.45	4.90	4.45	11/11/2021	
4	Kansin	Engkersik Village, Sekadau Hilir Sub District, Sekadau District, Kalimantan Barat Province, Indonesia	S 0°4'59"	E 111°2'9"	3.40	3.40	26.66	7.84	26.66	7.84	31/10/2021	
			S 0°5'7"	E 111°2'13"	1.40	1.40	18.46	13.19	18.46	13.19		
5	Yopianus Eko Saputra	Engkersik Village, Sekadau Hilir Sub District, Sekadau District, Kalimantan Barat Province, Indonesia	S 0°4'59"	E 111°2'15"	1.20	1.20	28.51	23.76	28.51	23.76	31/10/2021	
6	Bibiana Remagi	Engkersik Village, Sekadau Hilir Sub District, Sekadau District, Kalimantan Barat Province, Indonesia	S 0°5'12"	E 111°2'5"	1.50	1.50	7.07	4.71	7.07	4.71	31/10/2021	
7	Kristina Ida	Engkersik Village, Sekadau Hilir Sub District, Sekadau District, Kalimantan Barat Province, Indonesia	S 0°4'59"	E 111°2'48"	1.50	1.50	7.44	4.96	7.44	4.96	31/10/2021	
8	Antonius Mohtar	Engkersik Village, Sekadau Hilir Sub District, Sekadau District, Kalimantan Barat Province, Indonesia	S 0°5'7"	E 111°2'57"	0.88	0.88	19.36	22.00	19.36	22.00	09/10/2021	
			S 0°4'46"	E 111°2'28"	1.70	1.70	26.13	15.37	26.13	15.37		
9	Dorotea Ice Purwanti	Engkersik Village, Sekadau Hilir Sub District, Sekadau District, Kalimantan Barat Province, Indonesia	S 0°5'19"	E 111°2'29"	1.50	1.50	7.78	5.19	7.78	5.19	30/09/2021	

No Member	Smallholder Name	Location	Coordinate		Area (Ha)		Actual FFB production (MT/Year)	Yield (MT/Ha/Year)	Projection FFB Production (MT/Year)	Yield (MT/Ha/Year)	Date of Joining	Date of Leaving
			Latitude	Longitude	Total	Production						
10	T. Apuk Mui	Engkersik Village, Sekadau Hilir Sub District, Sekadau District, Kalimantan Barat Province, Indonesia	S 0°4'58"	E 111°2'54"	1.70	1.70	45.94	27.02	45.94	27.02	31/10/2021	
11	Gunawan	Engkersik Village, Sekadau Hilir Sub District, Sekadau District, Kalimantan Barat Province, Indonesia	S 0°5'30"	E 111°2'30"	2.00	2.00	14.56	7.28	14.56	7.28	09/10/2021	
12	Yohanes Johan	Engkersik Village, Sekadau Hilir Sub District, Sekadau District, Kalimantan Barat Province, Indonesia	S 0°5'9"	E 111°3'3"	1.50	1.50	17.84	11.89	17.84	11.89	08/10/2021	
13	Sabinus Mael	Engkersik Village, Sekadau Hilir Sub District, Sekadau District, Kalimantan Barat Province, Indonesia	S 0°5'16"	E 111°2'26"	1.94	1.94	18.92	9.75	18.92	9.75	08/10/2021	
14	Murni Bujang	Engkersik Village, Sekadau Hilir Sub District, Sekadau District, Kalimantan Barat Province, Indonesia	S 0°4'38"	E 111°1'22"	1.70	1.70	38.64	22.73	38.64	22.73	09/10/2021	
15	Albinus Rafael	Engkersik Village, Sekadau Hilir Sub District, Sekadau District, Kalimantan Barat Province, Indonesia	S 0°4'53"	E 111°2'44"	2.50	2.50	18.02	7.21	18.02	7.21	09/10/2021	
16	Fronika Romia	Engkersik Village, Sekadau Hilir Sub District, Sekadau District, Kalimantan Barat Province, Indonesia	S 0°5'16"	E 111°2'29"	1.68	1.68	16.60	9.88	16.60	9.88	04/12/2021	
17	Junianus	Engkersik Village, Sekadau Hilir Sub District, Sekadau District, Kalimantan Barat Province, Indonesia	S 0°5'15"	E 111°2'34"	1.70	1.70	14.98	8.81	14.98	8.81	20/10/2021	
18	Antonius Elet	Engkersik Village, Sekadau Hilir Sub District, Sekadau District, Kalimantan Barat Province, Indonesia	S 0°5'0"	E 111°2'42"	0.50	0.50	7.01	14.02	7.01	14.02	31/10/2021	
19	Ira Maria	Engkersik Village, Sekadau Hilir Sub District, Sekadau District, Kalimantan Barat Province, Indonesia	S 0°5'23"	E 111°2'23"	1.70	1.70	39.28	23.11	39.28	23.11	31/10/2021	
20	Emilia Aiti	Engkersik Village, Sekadau Hilir Sub District, Sekadau District, Kalimantan Barat Province, Indonesia	S 0°5'8"	E 111°3'21"	0.66	0.66	1.81	2.74	1.81	2.74	09/10/2021	

No Member	Smallholder Name	Location	Coordinate		Area (Ha)		Actual FFB production (MT/Year)	Yield (MT/Ha/Year)	Projection FFB Production (MT/Year)	Yield (MT/Ha/Year)	Date of Joining	Date of Leaving
			Latitude	Longitude	Total	Production						
21	Yulius Yolianto	Engkersik Village, Sekadau Hilir Sub District, Sekadau District, Kalimantan Barat Province, Indonesia	S 0°5'30"	E 111°2'22"	1.80	1.80	16.77	9.31	16.77	9.31	31/10/2021	
22	Sabar Tahrir	Engkersik Village, Sekadau Hilir Sub District, Sekadau District, Kalimantan Barat Province, Indonesia	S 0°5'4"	E 111°2'7"	2.66	2.66	20.43	7.68	20.43	7.68	31/10/2021	
23	Gregorius Haikun	Engkersik Village, Sekadau Hilir Sub District, Sekadau District, Kalimantan Barat Province, Indonesia	S 0°4'48"	E 111°2'20"	1.80	1.80	17.30	9.61	17.30	9.61	31/10/2021	
24	Pelaunsius	Engkersik Village, Sekadau Hilir Sub District, Sekadau District, Kalimantan Barat Province, Indonesia	S 0°5'25"	E 111°2'52"	2.06	2.06	15.19	7.37	15.19	7.37	09/10/2021	
25	Liong	Engkersik Village, Sekadau Hilir Sub District, Sekadau District, Kalimantan Barat Province, Indonesia	S 0°5'4"	E 111°2'53"	1.10	1.10	8.05	7.32	8.05	7.32	31/10/2021	
			S 0°5'0"	E 111°2'50"	1.20	1.20	18.83	15.69	18.83	15.69		
26	Dwi Handoyo Marselus	Engkersik Village, Sekadau Hilir Sub District, Sekadau District, Kalimantan Barat Province, Indonesia	S 0°4'54"	E 111°2'51"	1.70	1.70	34.08	20.05	34.08	20.05	07/10/2021	
27	Gabriel Akok	Engkersik Village, Sekadau Hilir Sub District, Sekadau District, Kalimantan Barat Province, Indonesia	S 0°5'7"	E 111°3'44"	1.50	1.50	40.05	26.70	40.05	26.70	31/10/2021	
28	Natalia Kristina	Engkersik Village, Sekadau Hilir Sub District, Sekadau District, Kalimantan Barat Province, Indonesia	S 0°4'57"	E 111°2'44"	1.50	1.50	34.39	22.92	34.39	22.92	31/10/2021	
29	Bambang Damianus	Engkersik Village, Sekadau Hilir Sub District, Sekadau District, Kalimantan Barat Province, Indonesia	S 0°5'40"	E 111°2'43"	1.60	1.60	8.64	5.40	8.64	5.40	28/11/2021	
30	Sepina Nik	Engkersik Village, Sekadau Hilir Sub District, Sekadau District, Kalimantan Barat Province, Indonesia	S 0°4'52"	E 111°5'17"	1.16	1.16	7.79	6.72	7.79	6.72	30/10/2021	

No Member	Smallholder Name	Location	Coordinate		Area (Ha)		Actual FFB production (MT/Year)	Yield (MT/Ha/Year)	Projection FFB Production (MT/Year)	Yield (MT/Ha/Year)	Date of Joining	Date of Leaving
			Latitude	Longitude	Total	Production						
31	Maria Nia Daniati	Engkersik Village, Sekadau Hilir Sub District, Sekadau District, Kalimantan Barat Province, Indonesia	S 0°4'16"	E 111°4'24"	2.10	2.10	19.17	9.13	19.17	9.13	31/10/2021	
32	Felix Sapto Nugroho	Engkersik Village, Sekadau Hilir Sub District, Sekadau District, Kalimantan Barat Province, Indonesia	S 0°4'18"	E 111°4'22"	1.04	1.04	8.29	7.97	8.29	7.97	31/10/2021	
33	Filipus Aden	Engkersik Village, Sekadau Hilir Sub District, Sekadau District, Kalimantan Barat Province, Indonesia	S 0°3'57"	E 111°4'42"	0.49	0.49	3.58	7.31	3.58	7.31	31/10/2021	
34	Yulius Tius	Engkersik Village, Sekadau Hilir Sub District, Sekadau District, Kalimantan Barat Province, Indonesia	S 0°4'36"	E 111°4'57"	1.09	1.09	10.12	9.28	10.12	9.28	30/10/2021	
35	Donatus Don	Engkersik Village, Sekadau Hilir Sub District, Sekadau District, Kalimantan Barat Province, Indonesia	S 0°4'32"	E 111°4'45"	0.49	0.49	5.37	10.96	5.37	10.96	31/10/2021	
36	Yulianus Martinus	Engkersik Village, Sekadau Hilir Sub District, Sekadau District, Kalimantan Barat Province, Indonesia	S 0°4'47"	E 111°5'19"	1.26	1.26	10.40	8.26	10.40	8.26	30/10/2021	
37	Nilus Nangkai	Engkersik Village, Sekadau Hilir Sub District, Sekadau District, Kalimantan Barat Province, Indonesia	S 0°3'53"	E 111°5'32"	1.97	1.97	20.72	10.52	20.72	10.52	31/12/2021	
38	Yohana Pemilu	Engkersik Village, Sekadau Hilir Sub District, Sekadau District, Kalimantan Barat Province, Indonesia	S 0°4'40"	E 111°5'13"	0.98	0.98	15.77	16.10	15.77	16.10	04/12/2021	
39	Marsiana Atik	Engkersik Village, Sekadau Hilir Sub District, Sekadau District, Kalimantan Barat Province, Indonesia	S 0°3'35"	E 111°5'49"	1.32	1.32	11.93	9.04	11.93	9.04	31/10/2021	
40	Andreas Maskor	Engkersik Village, Sekadau Hilir Sub District, Sekadau District, Kalimantan Barat Province, Indonesia	S 0°4'37"	E 111°5'10"	1.64	1.64	18.23	11.12	18.23	11.12	04/12/2021	
41	Maria Ima	Engkersik Village, Sekadau Hilir Sub District, Sekadau District, Kalimantan Barat Province, Indonesia	S 0°4'23"	E 111°4'38"	1.50	1.50	16.56	11.04	16.56	11.04	31/10/2021	

No Member	Smallholder Name	Location	Coordinate		Area (Ha)		Actual FFB production (MT/Year)	Yield (MT/Ha/Year)	Projection FFB Production (MT/Year)	Yield (MT/Ha/Year)	Date of Joining	Date of Leaving
			Latitude	Longitude	Total	Production						
42	Tan Tan Herdiansah	Engkersik Village, Sekadau Hilir Sub District, Sekadau District, Kalimantan Barat Province, Indonesia	S 0°4'25"	E 111°4'35"	1.42	1.42	18.86	13.28	18.86	13.28	31/10/2021	
43	Saparudin	Engkersik Village, Sekadau Hilir Sub District, Sekadau District, Kalimantan Barat Province, Indonesia	S 0°4'56"	E 111°5'22"	0.99	0.99	12.52	12.65	12.52	12.65	04/12/2021	
44	Mega Mustika	Engkersik Village, Sekadau Hilir Sub District, Sekadau District, Kalimantan Barat Province, Indonesia	S 0°4'27"	E 111°5'9"	1.80	1.80	20.49	11.38	20.49	11.38	18/10/2021	
45	Sabinus Madeng	Engkersik Village, Sekadau Hilir Sub District, Sekadau District, Kalimantan Barat Province, Indonesia	S 0°4'43"	E 111°5'50"	2.00	2.00	22.23	11.12	22.23	11.12	30/10/2021	
46	Yuliana Tatu	Engkersik Village, Sekadau Hilir Sub District, Sekadau District, Kalimantan Barat Province, Indonesia	S 0°4'27"	E 111°4'47"	2.00	2.00	21.64	10.82	21.64	10.82	30/10/2021	
47	Martinus Serawai	Engkersik Village, Sekadau Hilir Sub District, Sekadau District, Kalimantan Barat Province, Indonesia	S 0°5'12"	E 111°4'56"	0.50	0.50	-	-	2.00	4.00	18/10/2021	
48	Teodora	Engkersik Village, Sekadau Hilir Sub District, Sekadau District, Kalimantan Barat Province, Indonesia	S 0°4'24"	E 111°5'10"	0.70	0.70	9.11	13.01	9.11	13.01	18/11/2021	
49	P. Endu	Engkersik Village, Sekadau Hilir Sub District, Sekadau District, Kalimantan Barat Province, Indonesia	S 0°4'2"	E 111°5'9"	1.65	1.65	-	-	4.95	3.00	31/10/2021	
50	Yohanes Kiyai	Engkersik Village, Sekadau Hilir Sub District, Sekadau District, Kalimantan Barat Province, Indonesia	S 0°5'43"	E 111°4'57"	1.15	1.15	10.99	9.56	10.99	9.56	18/10/2021	
51	Yulita Nia	Engkersik Village, Sekadau Hilir Sub District, Sekadau District, Kalimantan Barat Province, Indonesia	S 0°6'50"	E 111°6'50"	1.47	1.47	12.32	8.38	12.32	8.38	18/10/2021	
52	Lamina	Engkersik Village, Sekadau Hilir Sub District, Sekadau District, Kalimantan Barat Province, Indonesia	S 0°4'23"	E 111°5'22"	1.80	1.80	11.93	6.63	11.93	6.63	30/10/2021	

No Member	Smallholder Name	Location	Coordinate		Area (Ha)		Actual FFB production (MT/Year)	Yield (MT/Ha/Year)	Projection FFB Production (MT/Year)	Yield (MT/Ha/Year)	Date of Joining	Date of Leaving
			Latitude	Longitude	Total	Production						
53	Tagong	Engkersik Village, Sekadau Hilir Sub District, Sekadau District, Kalimantan Barat Province, Indonesia	S 0°4'60"	E 111°5'25"	1.05	1.05	11.25	10.72	11.25	10.72	10/11/2021	
54	Pitronela	Engkersik Village, Sekadau Hilir Sub District, Sekadau District, Kalimantan Barat Province, Indonesia	S 0°5'39"	E 111°6'17"	1.05	1.05	17.02	16.21	17.02	16.21	11/10/2021	
55	Makarius Busang	Engkersik Village, Sekadau Hilir Sub District, Sekadau District, Kalimantan Barat Province, Indonesia	S 0°4'5"	E 111°5'8"	1.05	1.05	8.47	8.06	8.47	8.06	25/11/2021	
56	Susanti	Engkersik Village, Sekadau Hilir Sub District, Sekadau District, Kalimantan Barat Province, Indonesia	S 0°5'2"	E 111°5'16"	1.05	1.05	9.20	8.76	9.20	8.76	31/10/2021	
57	Marselinus Beni	Engkersik Village, Sekadau Hilir Sub District, Sekadau District, Kalimantan Barat Province, Indonesia	S 0°4'31"	E 111°5'36"	0.80	0.80	-	-	2.40	3.00	06/12/2021	
58	Susilya	Engkersik Village, Sekadau Hilir Sub District, Sekadau District, Kalimantan Barat Province, Indonesia	S 0°5'42"	E 111°6'5"	1.16	1.16	10.87	9.37	10.87	9.37	04/12/2021	
59	Ati	Engkersik Village, Sekadau Hilir Sub District, Sekadau District, Kalimantan Barat Province, Indonesia	S 0°5'12"	E 111°6'11"	1.40	1.40	-	-	5.60	4.00	04/12/2021	
60	Yusup	Engkersik Village, Sekadau Hilir Sub District, Sekadau District, Kalimantan Barat Province, Indonesia	S 0°6'23"	E 111°5'39"	1.95	1.95	18.66	9.57	18.66	9.57	12/04/2021	
61	Rosaria Normi	Engkersik Village, Sekadau Hilir Sub District, Sekadau District, Kalimantan Barat Province, Indonesia	S 0°5'58"	E 111°5'37"	1.13	1.13	-	-	4.52	4.00	04/12/2021	
62	Paulus Linggi	Engkersik Village, Sekadau Hilir Sub District, Sekadau District, Kalimantan Barat Province, Indonesia	S 0°6'4"	E 111°5'37"	1.61	1.61	12.25	7.61	12.25	7.61	04/12/2021	
63	Roni	Engkersik Village, Sekadau Hilir Sub District, Sekadau District, Kalimantan Barat Province, Indonesia	S 0°5'35"	E 111°6'47"	1.30	1.30	8.52	6.56	8.52	6.56	04/12/2021	

No Member	Smallholder Name	Location	Coordinate		Area (Ha)		Actual FFB production (MT/Year)	Yield (MT/Ha/Year)	Projection FFB Production (MT/Year)	Yield (MT/Ha/Year)	Date of Joining	Date of Leaving
			Latitude	Longitude	Total	Production						
64	Fransiska Juni	Engkersik Village, Sekadau Hilir Sub District, Sekadau District, Kalimantan Barat Province, Indonesia	S 0°5'6"	E 111°6'7"	1.06	1.06	15.81	14.91	15.81	14.91	04/12/2021	
65	Emilia	Engkersik Village, Sekadau Hilir Sub District, Sekadau District, Kalimantan Barat Province, Indonesia	S 0°5'40"	E 111°6'8"	0.97	0.97	5.54	5.71	5.54	5.71	04/12/2021	
66	Marta Linan	Engkersik Village, Sekadau Hilir Sub District, Sekadau District, Kalimantan Barat Province, Indonesia	S 0°5'43"	E 111°6'15"	1.17	1.17	14.49	12.38	14.49	12.38	04/12/2021	
67	Sasa	Engkersik Village, Sekadau Hilir Sub District, Sekadau District, Kalimantan Barat Province, Indonesia	S 0°5'37"	E 111°6'13"	1.61	1.61	-	-	4.83	3.00	04/12/2021	
68	Libertus Iwan	Engkersik Village, Sekadau Hilir Sub District, Sekadau District, Kalimantan Barat Province, Indonesia	S 0°6'16"	E 111°5'3"	1.42	1.42	-	-	4.26	3.00	04/12/2021	
69	Iwan	Engkersik Village, Sekadau Hilir Sub District, Sekadau District, Kalimantan Barat Province, Indonesia	S 0°6'13"	E 111°5'1"	1.94	1.94	-	-	5.82	3.00	15/11/2021	
70	Aloi S	Engkersik Village, Sekadau Hilir Sub District, Sekadau District, Kalimantan Barat Province, Indonesia	S 0°6'2"	E 111°5'30"	1.42	1.42	-	-	4.26	3.00	04/12/2021	
71	Lusiana Seramuk	Engkersik Village, Sekadau Hilir Sub District, Sekadau District, Kalimantan Barat Province, Indonesia	S 0°5'58"	E 111°5'32"	2.10	2.10	16.29	7.76	16.29	7.76	30/10/2021	
72	Manus	Engkersik Village, Sekadau Hilir Sub District, Sekadau District, Kalimantan Barat Province, Indonesia	S 0°6'7"	E 111°6'10"	2.08	2.08	19.25	9.26	19.25	9.26	04/12/2021	
73	Rudi P	Engkersik Village, Sekadau Hilir Sub District, Sekadau District, Kalimantan Barat Province, Indonesia	S 0°5'5"	E 111°5'35"	1.84	1.84	16.00	8.70	16.00	8.70	04/12/2021	
74	Kosnadi		S 0°5'38"	E 111°6'20"	0.50	0.50	8.56	17.13	8.56	17.13	30/10/2021	

No Member	Smallholder Name	Location	Coordinate		Area (Ha)		Actual FFB production (MT/Year)	Yield (MT/Ha/Year)	Projection FFB Production (MT/Year)	Yield (MT/Ha/Year)	Date of Joining	Date of Leaving
			Latitude	Longitude	Total	Production						
		Engkersik Village, Sekadau Hilir Sub District, Sekadau District, Kalimantan Barat Province, Indonesia	S 0°5'22"	E 111°6'26"	0.40	0.40	10.67	26.66	10.67	26.66		
			S 0°5'20"	E 111°6'29"	0.60	0.60	11.60	19.33	11.60	19.33		
75	Tius Cagam	Engkersik Village, Sekadau Hilir Sub District, Sekadau District, Kalimantan Barat Province, Indonesia	S 0°5'47"	E 111°6'7"	1.49	1.49	-	-	4.47	3.00	04/12/2021	
76	Sadi	Engkersik Village, Sekadau Hilir Sub District, Sekadau District, Kalimantan Barat Province, Indonesia	S 0°5'8"	E 111°5'35"	1.16	1.16	16.75	14.44	16.75	14.44	04/12/2021	
77	Matius Ef	Engkersik Village, Sekadau Hilir Sub District, Sekadau District, Kalimantan Barat Province, Indonesia	S 0°5'53"	E 111°7'39"	0.70	0.70	9.71	13.87	9.71	13.87	31/10/2021	
78	Florianus Dris	Engkersik Village, Sekadau Hilir Sub District, Sekadau District, Kalimantan Barat Province, Indonesia	S 0°6'18"	E 111°7'8"	1.20	1.20	15.68	13.07	15.68	13.07	20/11/2021	
79	Ariyanto	Engkersik Village, Sekadau Hilir Sub District, Sekadau District, Kalimantan Barat Province, Indonesia	S 0°5'41"	E 111°7'13"	1.00	1.00	13.98	13.98	13.98	13.98	31/10/2021	
80	Darwis Sutar	Engkersik Village, Sekadau Hilir Sub District, Sekadau District, Kalimantan Barat Province, Indonesia	S 0°6'30"	E 111°6'57"	1.10	1.10	13.60	12.37	13.60	12.37	29/10/2021	
81	Darang Istimura	Engkersik Village, Sekadau Hilir Sub District, Sekadau District, Kalimantan Barat Province, Indonesia	S 0°6'14"	E 111°6'56"	1.00	1.00	15.56	15.56	15.56	15.56	31/10/2021	
82	Veronika Anci	Engkersik Village, Sekadau Hilir Sub District, Sekadau District, Kalimantan Barat Province, Indonesia	S 0°5'30"	E 111°7'15"	0.90	0.90	15.87	17.63	15.87	17.63	31/10/2021	
83	Teresia	Engkersik Village, Sekadau Hilir Sub District, Sekadau District, Kalimantan Barat Province, Indonesia	S 0°5'50"	E 111°7'3"	2.50	2.50	33.74	13.50	33.74	13.50	31/10/2021	

No Member	Smallholder Name	Location	Coordinate		Area (Ha)		Actual FFB production (MT/Year)	Yield (MT/Ha/Year)	Projection FFB Production (MT/Year)	Yield (MT/Ha/Year)	Date of Joining	Date of Leaving
			Latitude	Longitude	Total	Production						
84	Maman Suherman	Engkersik Village, Sekadau Hilir Sub District, Sekadau District, Kalimantan Barat Province, Indonesia	S 0°5'13"	E 111°6'54"	0.40	0.40	9.84	24.60	9.84	24.60	15/11/2021	
85	Magdalena Rici	Engkersik Village, Sekadau Hilir Sub District, Sekadau District, Kalimantan Barat Province, Indonesia	S 0°5'37"	E 111°7'29"	1.00	1.00	12.35	12.35	12.35	12.35	31/10/2021	
86	Tiodorus	Engkersik Village, Sekadau Hilir Sub District, Sekadau District, Kalimantan Barat Province, Indonesia	S 0°6'18"	E 111°6'41"	2.00	2.00	33.71	16.85	33.71	16.85	20/09/2021	
87	Paulus Parah	Engkersik Village, Sekadau Hilir Sub District, Sekadau District, Kalimantan Barat Province, Indonesia	S 0°5'21"	E 111°7'30"	0.70	0.70	14.51	20.73	14.51	20.73	31/10/2021	
88	Yulius	Engkersik Village, Sekadau Hilir Sub District, Sekadau District, Kalimantan Barat Province, Indonesia	S 0°5'41"	E 111°7'8"	1.50	1.50	19.68	13.12	19.68	13.12	31/10/2021	
89	Kornelius Rigagah	Engkersik Village, Sekadau Hilir Sub District, Sekadau District, Kalimantan Barat Province, Indonesia	S 0°6'10"	E 111°7'26"	2.80	2.80	26.30	9.39	26.30	9.39	30/10/2021	
90	Lamparno	Engkersik Village, Sekadau Hilir Sub District, Sekadau District, Kalimantan Barat Province, Indonesia	S 0°6'5"	E 111°7'26"	1.00	1.00	6.82	6.82	6.82	6.82	31/10/2021	
91	Martinus Kandar	Engkersik Village, Sekadau Hilir Sub District, Sekadau District, Kalimantan Barat Province, Indonesia	S 0°6'16"	E 111°7'14"	0.70	0.70	9.61	13.72	9.61	13.72	31/10/2021	
92	Yasinta	Engkersik Village, Sekadau Hilir Sub District, Sekadau District, Kalimantan Barat Province, Indonesia	S 0°6'24"	E 111°7'2"	0.90	0.90	13.31	14.79	13.31	14.79	31/10/2021	
93	Harto	Engkersik Village, Sekadau Hilir Sub District, Sekadau District, Kalimantan Barat Province, Indonesia	S 0°5'25"	E 111°7'29"	1.60	1.60	19.17	11.98	19.17	11.98	30/10/2021	
94	Aheng Dry Ardyanto	Engkersik Village, Sekadau Hilir Sub District, Sekadau District, Kalimantan Barat Province, Indonesia	S 0°6'16"	E 111°7'6"	1.50	1.50	23.52	15.68	23.52	15.68	10/11/2021	

No Member	Smallholder Name	Location	Coordinate		Area (Ha)		Actual FFB production (MT/Year)	Yield (MT/Ha/Year)	Projection FFB Production (MT/Year)	Yield (MT/Ha/Year)	Date of Joining	Date of Leaving
			Latitude	Longitude	Total	Production						
95	Tri Surahman	Engkersik Village, Sekadau Hilir Sub District, Sekadau District, Kalimantan Barat Province, Indonesia	S 0°5'25"	E 111°7'32"	0.40	0.40	5.35	13.38	5.35	13.38	30/10/2021	
96	Albinus	Engkersik Village, Sekadau Hilir Sub District, Sekadau District, Kalimantan Barat Province, Indonesia	S 0°5'43"	E 111°7'9"	1.00	1.00	14.00	14.00	14.00	14.00	31/10/2021	
97	Petrus Adong	Engkersik Village, Sekadau Hilir Sub District, Sekadau District, Kalimantan Barat Province, Indonesia	S 0°6'47"	E 111°6'51"	1.50	1.50	10.79	7.20	10.79	7.20	30/09/2021	
98	Teresia Ida Rita	Engkersik Village, Sekadau Hilir Sub District, Sekadau District, Kalimantan Barat Province, Indonesia	S 0°5'48"	E 111°7'0"	0.40	0.40	6.67	16.67	6.67	16.67	04/11/2021	
99	Mikael	Engkersik Village, Sekadau Hilir Sub District, Sekadau District, Kalimantan Barat Province, Indonesia	S 0°6'41"	E 111°7'15"	1.30	1.30	17.16	13.20	17.16	13.20	31/10/2021	
100	Matius	Engkersik Village, Sekadau Hilir Sub District, Sekadau District, Kalimantan Barat Province, Indonesia	S 0°5'56"	E 111°7'9"	1.30	1.30	25.51	19.62	25.51	19.62	30/10/2021	
101	Pranciskus Hamsah	Engkersik Village, Sekadau Hilir Sub District, Sekadau District, Kalimantan Barat Province, Indonesia	S 0°6'29"	E 111°6'55"	2.00	2.00	16.50	8.25	16.50	8.25	31/10/2021	
102	Biatus Sukarman	Engkersik Village, Sekadau Hilir Sub District, Sekadau District, Kalimantan Barat Province, Indonesia	S 0°5'32"	E 111°7'27"	2.00	2.00	13.63	6.82	13.63	6.82	31/10/2021	
103	Andrianus Adi	Engkersik Village, Sekadau Hilir Sub District, Sekadau District, Kalimantan Barat Province, Indonesia	S 0°5'29"	E 111°7'31"	1.50	1.50	10.17	6.78	10.17	6.78	12/11/2021	
104	Bajong	Engkersik Village, Sekadau Hilir Sub District, Sekadau District, Kalimantan Barat Province, Indonesia	S 0°5'51"	E 111°7'1"	0.40	0.40	9.98	24.96	9.98	24.96	31/10/2021	
105	Marsia Desi	Engkersik Village, Sekadau Hilir Sub District, Sekadau District, Kalimantan Barat Province, Indonesia	S 0°4'45"	E 111°5'54"	2.00	2.00	24.38	12.19	24.38	12.19	31/10/2021	

No Member	Smallholder Name	Location	Coordinate		Area (Ha)		Actual FFB production (MT/Year)	Yield (MT/Ha/Year)	Projection FFB Production (MT/Year)	Yield (MT/Ha/Year)	Date of Joining	Date of Leaving
			Latitude	Longitude	Total	Production						
106	Agustinus Yanto	Engkersik Village, Sekadau Hilir Sub District, Sekadau District, Kalimantan Barat Province, Indonesia	S 0°7'19"	E 111°5'14"	2.00	2.00	26.53	13.27	26.53	13.27	30/10/2021	
107	Murdiono	Engkersik Village, Sekadau Hilir Sub District, Sekadau District, Kalimantan Barat Province, Indonesia	S 0°7'11"	E 111°5'24"	1.60	1.60	18.98	11.87	18.98	11.87	18/10/2021	
108	Sahdan	Engkersik Village, Sekadau Hilir Sub District, Sekadau District, Kalimantan Barat Province, Indonesia	S 0°7'26"	E 111°6'30"	1.20	1.20	10.45	8.71	10.45	8.71	30/10/2021	
109	Mardiana Suni	Engkersik Village, Sekadau Hilir Sub District, Sekadau District, Kalimantan Barat Province, Indonesia	S 0°7'29"	E 111°6'23"	1.20	1.20	16.96	14.14	16.96	14.14	31/10/2021	
110	Sibi Tinus	Engkersik Village, Sekadau Hilir Sub District, Sekadau District, Kalimantan Barat Province, Indonesia	S 0°7'14"	E 111°4'44"	2.20	2.20	17.88	8.13	17.88	8.13	30/10/2021	
111	Simon Petrus	Engkersik Village, Sekadau Hilir Sub District, Sekadau District, Kalimantan Barat Province, Indonesia	S 0°7'23"	E 111°6'0"	0.80	0.80	20.30	25.38	20.30	25.38	31/10/2021	
112	Dedi	Engkersik Village, Sekadau Hilir Sub District, Sekadau District, Kalimantan Barat Province, Indonesia	S 0°7'22"	E 111°4'46"	1.50	1.50	17.19	11.46	17.19	11.46	31/10/2021	
113	Isha Bidin	Engkersik Village, Sekadau Hilir Sub District, Sekadau District, Kalimantan Barat Province, Indonesia	S 0°6'47"	E 111°5'10"	1.30	1.30	20.92	16.09	20.92	16.09	30/10/2021	
114	Paulus Adon	Engkersik Village, Sekadau Hilir Sub District, Sekadau District, Kalimantan Barat Province, Indonesia	S 0°7'24"	E 111°6'14"	1.00	1.00	17.96	17.96	17.96	17.96	30/10/2021	
115	Rusadi Yustinus	Engkersik Village, Sekadau Hilir Sub District, Sekadau District, Kalimantan Barat Province, Indonesia	S 0°7'19"	E 111°5'10"	1.80	1.80	18.98	10.55	18.98	10.55	31/10/2021	
116	Martinus Linu		S 0°7'17"	E 111°6'12"	1.20	1.20	12.87	10.72	12.87	10.72	30/10/2021	

No Member	Smallholder Name	Location	Coordinate		Area (Ha)		Actual FFB production (MT/Year)	Yield (MT/Ha/Year)	Projection FFB Production (MT/Year)	Yield (MT/Ha/Year)	Date of Joining	Date of Leaving
			Latitude	Longitude	Total	Production						
		Engkersik Village, Sekadau Hilir Sub District, Sekadau District, Kalimantan Barat Province, Indonesia	S 0°7'21"	E 111°6'13"	0.40	0.40	7.03	17.59	7.03	17.59		
117	Paulus	Engkersik Village, Sekadau Hilir Sub District, Sekadau District, Kalimantan Barat Province, Indonesia	S 0°7'55"	E 111°5'44"	2.40	2.40	23.32	9.71	23.32	9.71	30/10/2021	
118	Mas	Engkersik Village, Sekadau Hilir Sub District, Sekadau District, Kalimantan Barat Province, Indonesia	S 0°7'31"	E 111°5'58"	1.00	1.00	15.09	15.09	15.09	15.09	16/10/2021	
119	Aban Ran	Engkersik Village, Sekadau Hilir Sub District, Sekadau District, Kalimantan Barat Province, Indonesia	S 0°8'28"	E 111°6'17"	2.80	2.80	17.47	6.24	17.47	6.24	04/12/2021	
120	Fatchurozak	Engkersik Village, Sekadau Hilir Sub District, Sekadau District, Kalimantan Barat Province, Indonesia	S 0°7'28"	E 111°6'2"	1.50	1.50	15.64	10.42	15.64	10.42	31/10/2021	
121	Aloysius Natos	Engkersik Village, Sekadau Hilir Sub District, Sekadau District, Kalimantan Barat Province, Indonesia	S 0°6'43"	E 111°5'41"	1.20	1.20	13.66	11.39	13.66	11.39	30/10/2021	
122	Bonaventura Tus	Engkersik Village, Sekadau Hilir Sub District, Sekadau District, Kalimantan Barat Province, Indonesia	S 0°7'14"	E 111°5'55"	4.00	4.00	37.08	9.27	37.08	9.27	31/10/2021	
123	Suyitno	Engkersik Village, Sekadau Hilir Sub District, Sekadau District, Kalimantan Barat Province, Indonesia	S 0°6'43"	E 111°5'12"	1.80	1.80	14.69	8.16	14.69	8.16	30/10/2021	
124	Jengkian	Engkersik Village, Sekadau Hilir Sub District, Sekadau District, Kalimantan Barat Province, Indonesia	0°7'25" S	E 111°6'2"	1.20	1.20	8.81	7.35	8.81	7.35	31/10/2021	
125	Sangau	Engkersik Village, Sekadau Hilir Sub District, Sekadau District, Kalimantan Barat Province, Indonesia	S 0°7'18"	E 111°5'13"	1.40	1.40	12.22	8.73	12.22	8.73	30/10/2021	
126	Yulius Yamen	Engkersik Village, Sekadau Hilir Sub District, Sekadau District, Kalimantan Barat Province, Indonesia	S 0°7'17"	E 111°5'58"	2.00	2.00	10.46	5.23	10.46	5.23	31/10/2021	

No Member	Smallholder Name	Location	Coordinate		Area (Ha)		Actual FFB production (MT/Year)	Yield (MT/Ha/Year)	Projection FFB Production (MT/Year)	Yield (MT/Ha/Year)	Date of Joining	Date of Leaving
			Latitude	Longitude	Total	Production						
127	Kasianus Anwar Bantan	Engkersik Village, Sekadau Hilir Sub District, Sekadau District, Kalimantan Barat Province, Indonesia	S 0°6'42"	E 111°5'50"	2.20	2.20	13.58	6.17	13.58	6.17	10/09/2021	
128	Nikodimus Yus	Engkersik Village, Sekadau Hilir Sub District, Sekadau District, Kalimantan Barat Province, Indonesia	S 0°6'51"	E 111°6'10"	2.00	2.00	16.54	8.27	16.54	8.27	30/11/2021	
129	Partinus Joko	Engkersik Village, Sekadau Hilir Sub District, Sekadau District, Kalimantan Barat Province, Indonesia	S 0°7'43"	E 111°6'8"	2.10	2.10	14.93	7.11	14.93	7.11	31/10/2021	
130	Yohanes Dimas	Engkersik Village, Sekadau Hilir Sub District, Sekadau District, Kalimantan Barat Province, Indonesia	S 0°5'27"	E 111°5'6"	2.80	2.80	16.21	5.79	16.21	5.79	30/10/2021	
131	Franciscus Abong	Engkersik Village, Sekadau Hilir Sub District, Sekadau District, Kalimantan Barat Province, Indonesia	S 0°4'13"	E 111°4'54"	0.70	0.70	16.69	23.85	16.69	23.85	30/10/2021	
132	Hermanus Asak	Engkersik Village, Sekadau Hilir Sub District, Sekadau District, Kalimantan Barat Province, Indonesia	S 0°4'6"	E 111°5'33"	1.68	1.68	17.12	10.19	17.12	10.19	30/10/2021	
133	Aka	Engkersik Village, Sekadau Hilir Sub District, Sekadau District, Kalimantan Barat Province, Indonesia	S 0°4'56"	E 111°4'12"	1.00	1.00	13.17	13.17	13.17	13.17	10/10/2021	
134	Adrianus Budiyo	Engkersik Village, Sekadau Hilir Sub District, Sekadau District, Kalimantan Barat Province, Indonesia	S 0°5'54"	E 111°6'22"	1.70	1.70	15.67	9.22	15.67	9.22	30/10/2021	
135	Agustinus Wandu	Engkersik Village, Sekadau Hilir Sub District, Sekadau District, Kalimantan Barat Province, Indonesia	S 0°5'58"	E 111°6'17"	1.20	1.20	15.68	13.07	15.68	13.07	30/10/2021	
136	Atalia Rena	Engkersik Village, Sekadau Hilir Sub District, Sekadau District, Kalimantan Barat Province, Indonesia	S 0°4'46"	E 111°5'8"	1.30	1.30	16.72	12.86	16.72	12.86	04/12/2021	
137	Kanisius Kadir	Engkersik Village, Sekadau Hilir Sub District, Sekadau District, Kalimantan Barat Province, Indonesia	S 0°4'34"	E 111°4'27"	1.50	1.50	17.62	11.75	17.62	11.75	30/11/2021	

No Member	Smallholder Name	Location	Coordinate		Area (Ha)		Actual FFB production (MT/Year)	Yield (MT/Ha/Year)	Projection FFB Production (MT/Year)	Yield (MT/Ha/Year)	Date of Joining	Date of Leaving
			Latitude	Longitude	Total	Production						
138	Likai	Engkersik Village, Sekadau Hilir Sub District, Sekadau District, Kalimantan Barat Province, Indonesia	S 0°4'33"	E 111°4'36"	1.00	1.00	12.91	12.91	12.91	12.91	30/10/2021	
139	Rebinus Noh	Engkersik Village, Sekadau Hilir Sub District, Sekadau District, Kalimantan Barat Province, Indonesia	S 0°4'50"	E 111°5'8"	1.50	1.50	15.66	10.44	15.66	10.44	30/10/2021	
140	Sabinus Budiman	Engkersik Village, Sekadau Hilir Sub District, Sekadau District, Kalimantan Barat Province, Indonesia	S 0°4'33"	E 111°4'42"	1.00	1.00	14.42	14.42	14.42	14.42	30/10/2021	
141	Sadarno	Engkersik Village, Sekadau Hilir Sub District, Sekadau District, Kalimantan Barat Province, Indonesia	S 0°4'19"	E 111°4'46"	1.00	1.00	16.19	16.19	16.19	16.19	31/10/2021	
142	Sirma Slicani	Engkersik Village, Sekadau Hilir Sub District, Sekadau District, Kalimantan Barat Province, Indonesia	S 0°4'25"	E 111°4'17"	1.00	1.00	15.68	15.68	15.68	15.68	26/02/2021	
143	Suparjo Ebol	Engkersik Village, Sekadau Hilir Sub District, Sekadau District, Kalimantan Barat Province, Indonesia	S 0°4'43"	E 111°4'20"	1.00	1.00	14.19	14.19	14.19	14.19	26/02/2021	
144	Teraju	Engkersik Village, Sekadau Hilir Sub District, Sekadau District, Kalimantan Barat Province, Indonesia	S 0°4'41"	E 111°5'28"	1.00	1.00	14.59	14.59	14.59	14.59	10/09/2021	
145	Yohanes Joko	Engkersik Village, Sekadau Hilir Sub District, Sekadau District, Kalimantan Barat Province, Indonesia	S 0°4'36"	E 111°4'33"	1.00	1.00	14.93	14.93	14.93	14.93	20/10/2021	
146	Yuliana Seramuk	Engkersik Village, Sekadau Hilir Sub District, Sekadau District, Kalimantan Barat Province, Indonesia	S 0°4'44"	E 111°5'30"	1.00	1.00	14.75	14.75	14.75	14.75	10/09/2021	
147	Yulianus Kadau	Engkersik Village, Sekadau Hilir Sub District, Sekadau District, Kalimantan Barat Province, Indonesia	S 0°4'15"	E 111°4'20"	1.20	1.20	15.23	12.69	15.23	12.69	30/10/2021	
148	Hermanus	Engkersik Village, Sekadau Hilir Sub District, Sekadau District, Kalimantan Barat Province, Indonesia	S 0°3'35"	E 111°4'50"	1.50	1.50	19.52	13.02	19.52	13.02	10/09/2021	

No Member	Smallholder Name	Location	Coordinate		Area (Ha)		Actual FFB production (MT/Year)	Yield (MT/Ha/Year)	Projection FFB Production (MT/Year)	Yield (MT/Ha/Year)	Date of Joining	Date of Leaving
			Latitude	Longitude	Total	Production						
149	Joni	Engkersik Village, Sekadau Hilir Sub District, Sekadau District, Kalimantan Barat Province, Indonesia	S 0°6'18"	E 111°5'19"	1.50	1.50	16.46	10.98	16.46	10.98	30/10/2021	
					218.47	218.47	2,326.37	10.65	2,369.48	10.85		