

***Roundtable on Sustainable Palm Oil Certification  
R S P O***

**[✓] Surveillance**

Name of Management Organisation : Koperasi Konsumen Tebing Tinggi Pangkatan Sejahtera  
 Plantation Name : Koperasi Konsumen Tebing Tinggi Pangkatan Sejahtera  
 Location : Tebing Tinggi Village, Pangkatan Sub District, Labuhanbatu District, Sumatera Utara Province, Indonesia  
 Certificate Code : MUTU-RSPO/170  
 Date of Certificate Issue : 17 May 2022      Date of License Issue : 17 Juni 2023  
 Date of Certificate Expiry : 16 May 2027      Date of License Expiry : 16 May 2024

Assessment	Assessment Date	PT. Mutuagung Lestari Auditor	Reviewed by	Approved by
ASA-1	02 to 04 May 2023	Hasiholan Sihombing (Lead Auditor Witnessing), Rindu Galih Rezza Rachmansyah (Lead Auditor Witnessed), Septian Maulana	Moh Arif Yusni	Leonada

Assessment	Approved by MUTUAGUNG LESTARI on:
ASA-1	31 May 2023

**TABLE OF CONTENT**
**FIGURE**

Figure 1. Location Map of Koperasi Konsumen Tebing Tinggi Pangkatan Sejahtera	1
Figure 2. Operational Map of Koperasi Konsumen Tebing Tinggi Pangkatan Sejahtera	2

Abbreviations Used	3
--------------------	---

**1.0 SCOPE of the CERTIFICATION ASSESSMENT**

1.1 Assessment Standard Used	4
1.2 Organisation Information	4
1.3 Type of Assessment	4
1.4 Location of Plantations	4
1.5 Description of Area Statement	4
1.6 Planting Year and Cycles	4
1.7 Description of Supply Base	5
1.8 Tonnage Product	5
1.9 Other Certification	6

**2.0 ASSESSMENT PROCESS**

2.1 Assessment Team	7
2.2 Assessment Methodology, Assessment Process and Locations of Assessment	7
2.3 Stakeholder Consultation and Stakeholders Contacted	8
2.4 Determining Next Assessment	9

**3.0 ASSESSMENT FINDINGS**

3.1 Summary of Assessment Report of the RSPO Certification	10
3.2 Conformity Checklist of Certificate and Logo Use	33
3.3 Identification of Findings, Corrective Actions, Observations, Opportunity for Improvement and Noteworthy Positive Components	34
3.4 Summary of Arising Issues from Public and Auditor Verification	37

**4.0 CERTIFIED ORGANISATION'S ACKNOWLEDGEMENT OF INTERNAL RESPONSIBILITY**

4.1 Formal Signing of Assessment Findings	39
---	----

**APPENDICES**

1. List of Stakeholders Contacted in the RSPO Certification Process	40
2. Assessment Program	41
3. Smallholders Data	42

Figure 1. Location Map of Koperasi Konsumen Tebing Tinggi Pangkatan Sejahtera

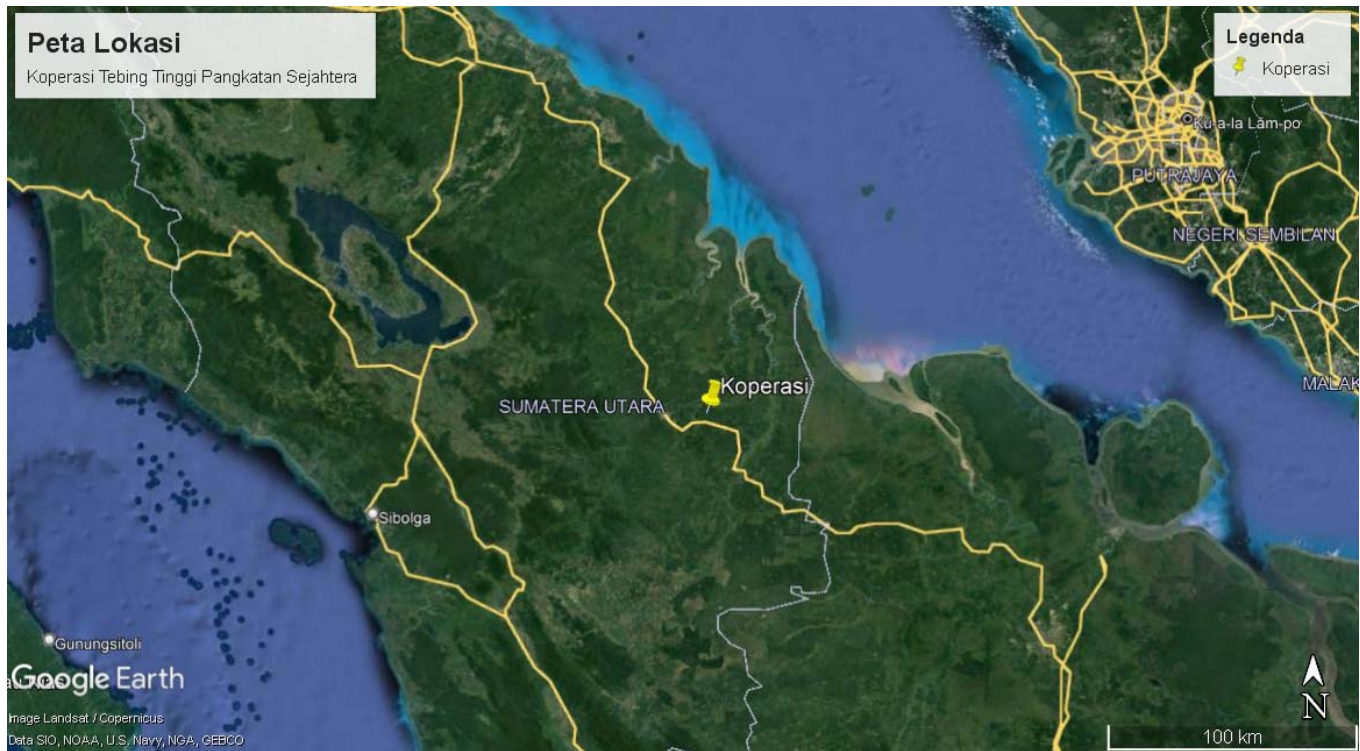
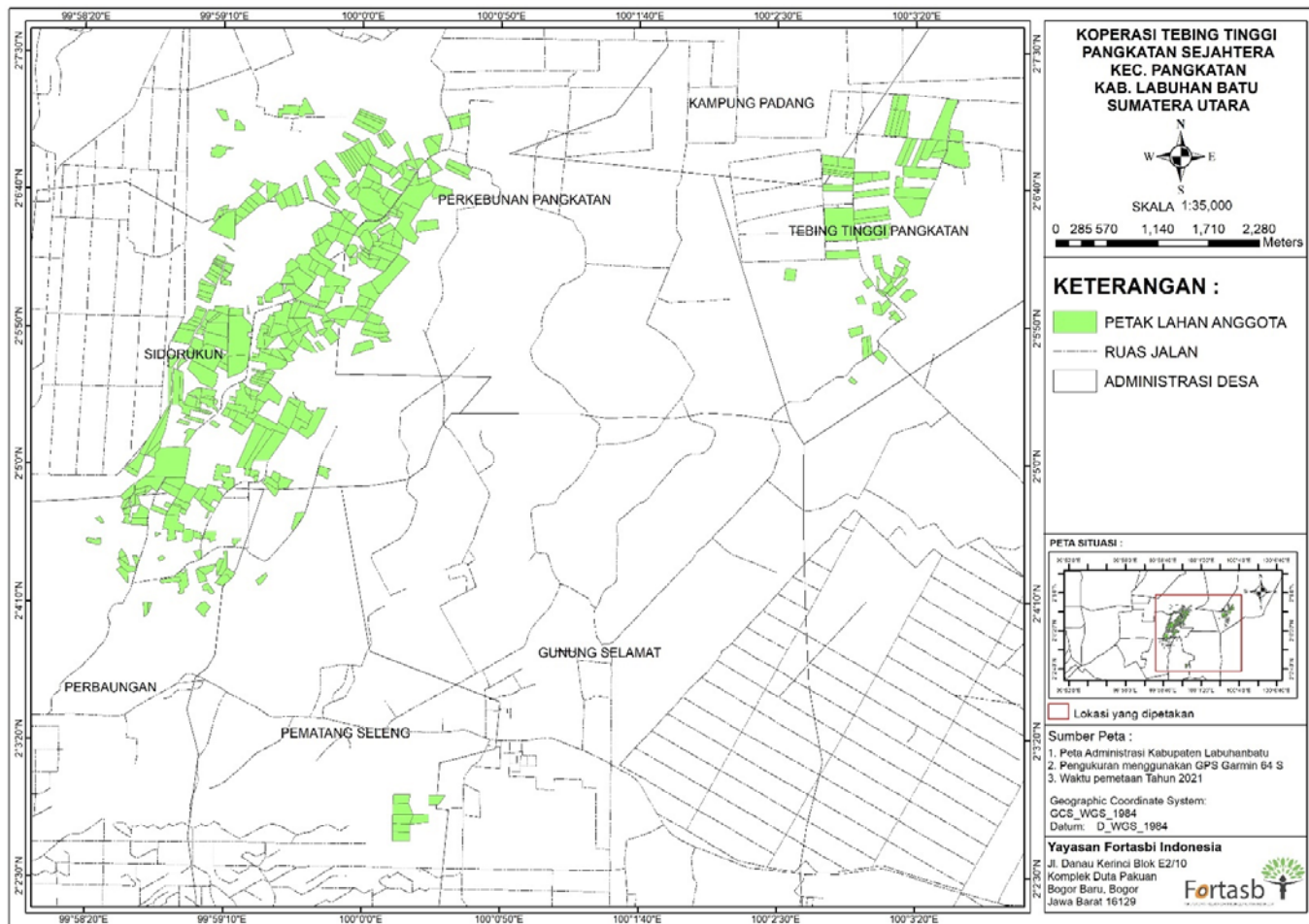


Figure 2. Operational Map of Koperasi Konsumen Tebing Tinggi Pangkatan Sejahtera



**Abbreviations Used**

BKSDA	:	Nature Conservation Agency
BUMDES	:	Village-Owned Enterprises
FFB	:	Fresh Fruit Bunch
FGD	:	Focus Group Discussion
FPIC	:	Free Prior and Informed Consent
GAP	:	Good Agricultural Process
HCS	:	High Carbon Stock
HCV	:	High Conservation Value
ICS	:	Internal Control System
IPM	:	Integrated Pest Management
ISH	:	Independent Smallholder
KKTTSPS	:	Koperasi Konsumen Tebing Tinggi Pangkatan Sejahtera
LUCA	:	Land Use Change Analysis
MS A	:	Milestone A
MS B	:	Milestone B
NA	:	Not Applicable
OFI	:	Opportunity for Improvement
OHS	:	Occupational Health and Safety
PPE	:	Personal Protective Equipment
RAT	:	Annual Member Meeting
RSPO	:	Roundtable on Sustainable Palm Oil
SHM	:	<i>Sertifikat Hak Milik</i> (Land Certificate / Freehold Title)
SKGR	:	<i>Surat Keterangan Ganti Rugi</i> (Compensation Certificate)
SKT	:	<i>Surat Keterangan Tanah</i> (Land Certificate Registration)
SOP	:	Standard Operating Procedures
SPPL	:	<i>Surat Persetujuan Pengelolaan Lingkungan</i> (Environment Management Decree)
STDB	:	<i>Surat Tanda Daftar Budidaya</i> (Cultivation Rights)
WHO	:	World Health Organization

1.0	SCOPE of the CERTIFICATION ASSESSMENT		
1.1	Assessment Standard Used	<ul style="list-style-type: none"><li>RSPO Certification Systems for Principles &amp; Criteria and RSPO Independent Smallholder Standard Endorsed by the RSPO Board of Governors on 12 November 2020</li><li>RSPO Independent Smallholder Standard, Indonesia National Interpretation for the Production of Sustainable Palm Oil 2020, endorsed by the RSPO Board of Governors on 14 February 2022</li></ul>	
1.2	Organisation Information		
1.2.1	Organisation name listed in the certificate	Koperasi Konsumen Tebing Tinggi Pangkatan Sejahtera	
1.2.2	Contact person	Khairul Anam	
1.2.3	Organisation address and site address	Tebing Tinggi Village, Pangkatan Sub District, Labuhanbatu District, Sumatera Utara Province, Indonesia	
1.2.4	Telephone	-	
1.2.5	Fax	-	
1.2.6	E-mail	pangkatansejahtera@gmail.com	
1.2.7	Web page address	-	
1.2.8	Management Representative who completed the application for certification	Khairul Anam	
1.2.9	Registered as RSPO member	1-0363-22-000-00 – 3 March 2022	
1.3	Type of Assessment		
1.3.1	Scope of Assessment and Number of Management Unit	239 smallholders with total area 685.33 Ha	
1.3.2	Type of certificate	Single	
1.4	Locations of Plantation		
1.4.1	Location of Certification Scope of Supply Base		
	Name of Smallholder Organisation	Location	Coordinate
			LatitudeLongitude
	Koperasi Konsumen Tebing Tinggi Pangkatan Sejahtera	Tebing Tinggi Village, Pangkatan Sub District, Labuhanbatu District, Sumatera Utara Province, Indonesia	N 02° 05' 27.492"E 99° 58' 58.8"
1.5	Description of Area Statement		
1.5.1	Tenure		
	• State	- Ha	
	• Community	685.33 Ha	
1.5.2	Area Statement		
	• Total area	685.33 Ha	
	• Mature area	685.33 Ha	
1.6	Planting Year and Cycles		
1.6.1	Age profile of planting year		

Planting Year	Hectarage (Ha)				
	Koperasi Konsumen Tebing Tinggi Pangkatan Sejahtera	Total			
1975	4.00	4.00			
1976	1.00	1.00			
1980	34.10	34.10			
1981	1.40	1.40			
1982	3.40	3.40			
1983	12.90	12.90			
1984	1.70	1.70			
1985	8.90	8.90			
1986	2.80	2.80			
1987	1.50	1.50			
1988	5.10	5.10			
1989	9.70	9.70			
1990	53.00	53.00			
1991	9.20	9.20			
1992	15.20	15.20			
1993	49.20	49.20			
1994	4.40	4.40			
1995	61.30	61.30			
1996	82.43	82.43			
1997	40.90	40.90			
1998	37.10	37.10			
1999	60.10	60.10			
2000	42.10	42.10			
2001	33.40	33.40			
2002	46.00	46.00			
2003	12.70	12.70			
2004	38.70	38.70			
2005	13.10	13.10			
TOTAL	685,33	685,33			
1.6.2	New Planting area after January 2010	Ha			
1.6.3	Planting Cycle	1 <sup>st</sup> Cycle			
1.7	Description of Supply Base				
1.7.1	Description of Certification Scope of Supply Base				
	Name of Smallholder Organisation	Total Area (Ha)	Production Area (Ha)	FFB (tonnes/year)	Yield (tonnes/ha/year)
	Koperasi Konsumen Tebing Tinggi Pangkatan Sejahtera	685.33	685.33	14,047.34	20.50
	*FFB production for 12 months of certificate (May 2022 – April 2023)				
1.8	Tonnage of Product				
1.8.1	Past Annual Claim Certified Product	Last Year Projected Certified Volume (MT)		Last Year Actual Certified Volume (17 May 2022 to 30 April 2023) (MT)	
	• FFB Production	13.800		14,047.34	



	<ul style="list-style-type: none"><li>CSPO Production</li><li>CSPKE Production</li><li>CSPKO Production</li></ul>	-	-				
1.8.2	Product selling						
	Tonnage of selling product	Actual selling product for last year (17 May 2022 to 30 April 2023) (MT)					
	<ul style="list-style-type: none"><li>IS-CSPO sold as RSPO Credit</li></ul>	2,760 (20% from FFB Actual Production)					
	<ul style="list-style-type: none"><li>IS-CSPKE sold as RSPO Credit</li></ul>	-					
	<ul style="list-style-type: none"><li>IS-CSPKO sold as RSPO Credit</li></ul>	310 (5%*0.45 from FFB Actual Production)					
	<ul style="list-style-type: none"><li>FFB sold as RSPO Certified Product</li></ul>	-					
	<ul style="list-style-type: none"><li>FFB sold under other scheme</li></ul>	-					
	<ul style="list-style-type: none"><li>FFB sold as conventional</li></ul>	-					
1.8.3	Estimate Certified FFB Claim						
	<b>Name of Smallholder Organisation</b>	<b>Total Area (Ha)</b>	<b>Production Area (Ha)</b>	<b>FFB (tonnes/year)</b>	<b>Yield (tonnes/ha/year)</b>		
	Koperasi Konsumen Tebing Tinggi Pangkatan Sejahtera	685.33	685.33	14,100	20.57		
	<i>*Projected FFB production for 12 months of certificate (May 2023 – April 2024)</i>						
1.8.4	Estimate Certified Palm Product Claim						
	<b>FFB Processed (tonnes/year)</b>	<b>CPO</b>		<b>CSPKE</b>		<b>CSPKO</b>	
		<b>Out put (tonnes)</b>	<b>Extraction (%)</b>	<b>Out put (tonnes)</b>	<b>Extraction (%)</b>	<b>Out put (tonnes)</b>	<b>Extraction (%)</b>
	-	-	-	-	-	-	-
	<i>*Extraction of CSPO, CSPKO and CSPKE from document "A seller Guide to RSPO Credits"</i>						
1.9	Other Certifications						
	Others			-			



2.0	ASSESSMENT PROCESS
2.1	Assessment Team
ASA-1	<p>1. <b>Hasiholan Sihombing (Lead Auditor Witnessing)</b>. Indonesian citizen. Bachelor of Agriculture Majoring in Agronomy, Agriculture Faculty. He has working experience for 7 (seven) years since 2009 as an Operational Staff in an Oil Palm Plantation Company in Indonesia. The training he has followed namely: Lead Auditor ISPO in 2016, RSPO P&amp;C Lead Auditor Course in 2018, RSPO Supply Chain Certification Lead Auditor Course in 2020, SA 8000 Awareness in 2018, Quality Management Systems (ISO 9001:2015) in 2016, Environmental Management Systems (ISO 14001:2015) in 2017, OHS General Expert in 2013, OHSAS 18001:2007 in 2017, ISO 19011:2018 in 2019, ISO 17021:2011 and ISO 17065:2012 in 2016. During this audit, he was witnessing Lead Auditor.</p> <p>2. <b>Rindu Galih Rezza Rachmansyah (Lead Auditor Witnessed)</b>. Indonesian citizen, Bachelor of Agriculture with major in Plant Pest and Disease. Has one year experience as Field Expert in Pesticide Company and 3 years' experience in Industrial Forest Management, Forest Rehabilitation and Reclamation on Indonesia Stated Owned Company as Assistant. Training which had attended including Lead Auditor ISO 9001, ISO 14001, ISO 17021, ISO 19011, SA 8000, Lead Auditor ISPO in 2017, Lead Auditor RSPO in 2018, RSPO Supply Chain Certification Lead Auditor Course in 2022, Training RSPO Independent Smallholder Standard (RISS) from RSPO in 2022, RaCP &amp; NPP Awareness and OHSAS 18001:2007. Has involved in several audit activities related to sustainable palm oil since 2017 in the aspects of Best Management Practices (BMP), social, worker welfare and OHS. During assessment, he assigned to verify Legality, SCCS, ICS and Social aspects witnessed by Lead Auditor Witnessing.</p> <p>3. <b>Septian Maulana (Auditor)</b>. Indonesian Citizen, Bachelor of Economic, Pamulang University. Have experience as sustainability staff on oil palm plantation. Training have been followed including Occupational Health and Safety Expert Candidate certification by Ministry of Manpower and Transmigration of Indonesia; Basic Fire Fighting and Basic First Aid; Awareness Integrated Management Systems (ISO 14001, and ISO 45001 in 2020); Awareness (ISO 19011, ISO 17065; and ISO 17021) in 2020; ISO 9001:2015 Lead Auditor in 2021, ISPO Lead Auditor in 2021, RSPO Lead Auditor in 2021, Training RSPO Independent Smallholder Standard (RISS) from RSPO in 2022 and Completed Awareness Social Audit SMETA in 2022. During this audit, he was assigned to verify Worker Welfare, OHS and Environment aspects.</p>
2.2	Assessment Methodology, Assessment Process and Locations of Assessment
2.2.1	Figure of person days to implement assessment
ASA-1	<p>Number of auditors : 2 auditor and 1 lead auditor witnessing</p> <p>Number of days for ASA-1 at site : 3 days</p> <p>Number of working days for ASA-1 at site : 6 Working days</p>
2.2.2	Assessment Process
ASA-1	<p>The assessment was conducted by measuring the sufficiency of implementation with the consistency done by the Koperasi Konsumen Tebing Tinggi Pangkatan Sejahtera to the requirements of RSPO Independent Smallholder Standard, Indonesia National Interpretation for the Production of Sustainable Palm Oil 2020, endorsed by the RSPO Board of Governors on 14 February 2022 and RSPO Certification Systems for Principles &amp; Criteria and RSPO Independent Smallholder Standard Endorsed by the RSPO Board of Governors on 12 November 2020.</p> <p>The assessment was conducted in three methods: (1) document review, aiming to observe the sufficiency of types or substances from required documents; (2) <i>interview</i>, aiming to obtain more detailed information and cross check the information; and (3) field observation, aiming to observe directly the sufficiency of implementation on site.</p> <p>Some opportunities for improvement of the results ASA-1 delivered by the MUTU auditor to the management unit and the results are the subject will be verified at the next assessment phase (ASA-2).</p> <p>Improvement of findings from MS-B findings were observed by auditors at this ASA-1 assessment. All information obtained was recorded in Check List of PT Mutuagung Lestari (MUTU) and part of ASA-1</p>

	<p>Team of auditor started their trip from Jakarta to Rantauprapat and continued to site. Opening Meeting in the Meeting Room of KKTTSP. Opening meeting was attended by head of organization, ICS and other related personnel. KKTTSP currently has 239 members which divided in the six farmers groups and there have been no additions or reductions in members since the previous assessment.</p> <p>Meetings were held with stakeholders to seek their views on the performance of the company with respect to the RSPO requirements and aspects where they considered that improvements could be made. At the start of each meeting, the interviewer explained the purpose of the audit followed by an evaluation of the relationship between the stakeholder and the company before discussions proceeded. The interviewer recorded comments made by stakeholders and these have been incorporated into the assessment findings. The comments made by external stakeholders were also taken into account in the assessment</p> <p>Structured worker and members interview with male and female workers were held in private at the workplace. Fieldworkers were interviewed informally in small groups in the field. Company officials were not present at any of the internal or external stakeholder interviews. A list of Stakeholders contacted is included as Appendix 1.</p> <p>The assessment program please find Appendix 2</p>
<b>2.2.3</b>	<b>Locations of Assessment</b>
<b>ASA-1</b>	<p>The sample size should then be determined by the formula <math>(\sqrt{y}) \times (z)</math>, where y is the number of smallholders, z is the multiplier defined by the risk assessment. Multipliers are set as follows: Low risk = multiplier of 1; Medium risk = multiplier of 1.2, and High risk = multiplier of 2. The risk assessed by auditor team is medium risk because the area is homogen (no replanting) and only in one village.</p> <p>Based on that's formula the minimum numbers of sampling are 20 smallholders (This is based on consideration of medium risk with a total of 239 members <math>\rightarrow \sqrt{239} \times 1.2 = 20</math> sampling). The sampling location consider the issue arose from the review documents and stakeholder's consultation that are fundamental and crucial. The smallholders and locations visited by auditor were:</p> <ul style="list-style-type: none"> <li>• 6 Member's Plots of Batu Lima Smallholder Group. Field Observation and interview related to best practices, legality, environmental, and worker welfare.</li> <li>• 8 Member's Plots of Gapuk Smallholder Group. Field Observation and interview related to best practices, legality, environmental, and worker welfare.</li> <li>• 6 Member's Plots of Kampung Malaka Smallholder Group. Field Observation and interview related to best practices, legality, environmental, and worker welfare.</li> <li>• KKTTSP meeting office. Interview to the farmers group related to ICS, SCC, best practices, OHS, legality, environmental, and worker welfare.</li> </ul> <p>Based on the field observation above, the auditor has conducted field observations and interviews with 20 samples of members according to a predetermined formula.</p>
<b>2.3</b>	<b>Stakeholder Consultation and Stakeholders Contacted</b>
<b>2.3.1</b>	<b>Summary of stakeholder consultation process.</b>
<b>ASA-1</b>	<p>Consultation of stakeholders for Koperasi Konsumen Tebing Tinggi Pangkatan Sejahtera was held by:</p> <ul style="list-style-type: none"> <li>• Public Notification on RSPO and MUTU website 18 April 2023.</li> <li>• Public consultation meeting with government institution 4 May 2023</li> <li>• Consultation with NGO (WWF, Sawit Watch &amp; Walhi) via email on 18 April 2023</li> </ul> <p>Numbers of input from stakeholders were clarified by Koperasi Konsumen Tebing Tinggi Pangkatan Sejahtera as a part of this report.</p>

2.3.2	Stakeholder contacted
	<i>Please find appendix 1</i>
2.4	Determining Next Assessment
	The next visit (ASA-2) will be conducted 9 to 12 months after certificate issued.

### 3.0 ASSESSMENT FINDINGS

#### 3.1 Summary of Assessment Report of the RSPO Certification

MUTUAGUNG LESTARI has conducted an assessment of Koperasi Konsumen Tebing Tinggi Pangkatan Sejahtera operation consisting of 239 smallholders.

During the assessment, there were nil (0) nonconformity and nil (0) opportunity for improvement were identified.

MUTUAGUNG LESTARI found that Koperasi Konsumen Tebing Tinggi Pangkatan Sejahtera complied with the requirements of RSPO Independent Smallholder Standard, Indonesia National Interpretation for the Production of Sustainable Palm Oil 2020, endorsed by the RSPO Board of Governors on 14 February 2022 and RSPO Certification Systems for Principles & Criteria and RSPO Independent Smallholder Standard Endorsed by the RSPO Board of Governors on 12 November 2020.

Therefore MUTUAGUNG LESTARI Recommends RSPO Certification of compliance is Continued.

##### 3.1.1 The system requirements for Group Formation and Management (including the Internal Control System) that are only applicable to the group manager

Ref Std.	VERIFICATION RESULT of MUTU-Certification	
<b>A – ICS: Group Entity and Group Management Requirements</b>		
<b>A.1 The Group demonstrates that they are legally formed</b>		
<p><b>A.1.1</b>  <b>Eligibility; MS A and MS B:</b>            There is no change related to Chairperson and Management of KKTTPS since last audit. The cooperative has determined its management structure in the form of "<i>Struktur Organisasi Koperasi Konsumen Tebing Tinggi Pangkatan Sejahtera</i>", which was set on 06 April 2021. In this stipulation, Khairul Anam is appointed as the Chairperson of the Koperasi Konsumen Tebing Tinggi Pangkatan Sejahtera (KKTTPS). In addition to the determination of the chairman of the cooperative, the document also stipulates that all cooperative management are group managers in controlling cooperatives. One of the tasks is to carry out internal audit activities and also monitor cultivation aspects in the field.</p> <p>The selection and determination of the Chairperson of the KKTTPS has been carried out openly by all members. This is in accordance with the results of interviews with members during the audit activity which stated that the appointment of the chairman was based on the results of the election of all members and this was known/agreed upon. All documents related to the election and determination of the Chairperson and the KKTTPS Management are well documented in the Office and can be shown if needed.</p>		
<p><b>A.1.2</b>  <b>Eligibility; MS A and MS B:</b>            There is no change related to legal document of KKTTPS since last audit. The cooperative has legalized the establishment of a legal entity in the name of the <i>Koperasi Konsumen Tebing Tinggi Pangkatan Sejahtera</i> domiciled in Labuhanbatu Regency in accordance with the Copy of Deed No. 10 dated 16 April 2020 drawn up by Elviana Sagala, SH., M.Kn, domiciled in Labuhanbatu Regency with number registration AHU-0003308.AH.01.26.TAHUN 2020 based on the Decree of the Minister of Law and Human Rights of the Republic of Indonesia.</p> <p>All legal documents mentioned above are available and kept by the KKTTPS management at the Office. The person responsible for the availability and security of these legal documents is the Chairperson (if it is felt that storage at the Office is not secure, the Chairperson will store them in a more secure place). When the audit activity takes place, the Head of KKTTPS can show the document to the auditor.</p>		

**A.1.3**
**Eligibility; MS A and MS B:**

There is no change related to requirements to become member of KKTTSPS since last audit (there is no new member that has been joined since previous audit). The cooperative has a policy related to the requirements to become a member in the SOP Criteria and Member Requirements (No. 1/SOP/SPA/ICS/KK-TTSPS/IV/2021) which was set on 09 April 2021. The document describes the requirements for become a member, including:

- Willingness of prospective members to follow the rules of the RSPO certification unit.
- Have clear land legality as evidenced by a land ownership certificate.
- Land for prospective farmers may not be in peat land, forest areas or areas in conflict.
- Must show a power of attorney as manager from the land owner.

Before forming into KKTTSPS, all current members were members of BUMDES (Village-Owned Enterprises / *Badan Usaha Milik Desa*) and after KKTTSPS were officially registered with government agencies, these members held elections on April 6, 2021 for the Chair of KKTTSPS. After the election is carried out, the members complete the requirements to become official members of the KKTTSPS in accordance with the requirements above. After verification by the Chairman, Management and Supervisors, 239 members have officially joined since May 16 2021.

The results of the document review during the audit activity, the KKTTSPS were able to show the initial registration documents for as many as 20 members who were sampled during the audit activity and all of these documents were in accordance with the requirements determined by the company.

**A.1.4**
**Eligibility and MS B:**

The KKTTSPS shows proof of ratification of the requirements for members, for example in the recording of the farmer's statement on behalf of Sri Linda Wati which was signed by him on 19 August 2021. The recording contains a statement of the commitment of (the statement is in accordance with Annex 2) the farmer after becoming a member (this is because the current 239 members were members of BUMDES before the KKTTSPS was formed so the statement was made after the members joined the KKTTSPS and there is no new member that has been joined since previous audit), for example:

- Use of best management practices for palm oil.
- No burning to prepare land or control pests.
- Protect HCV and HCS forests through a precautionary approach.
- Provide safe working conditions and facilities.
- Ensure that there are no child labor practices in plantation operations.
- Ensure that there are no forced labor practices in plantation operations and stop any forced labor practices that still exist.

**MS A and MS B:**

Based on the results of the document review at the cooperative office. the auditor found on a sample basis that 20 members had signed a commitment to comply with the RSPO principles as well as the requirements of other members. This is in accordance with the results of interviews with the members who were sampled during the FGD (Forum Group Discussion) before the field observation activities were carried out, where the members stated that they understood enough and could explain clearly the requirements needed/obliged to be obeyed by the members. member.

Status: Comply
----------------

**A.2 The Group Manager is responsible for managing the Group for certification**
**A2.1**
**Eligibility:**

The KKTTSPS has set a series of SOPs/Policies as plans at ICS with a total of 41 Procedures/Policies and has made an ICS implementation plan which can be shown from the 2022-2023 Work Plan document (the group manager has been planed this for the implementation of ICS) where in the document there are several activities such as certification system training, internal audit, pre-audit, external audit, management meeting, and general meeting of members as well as training and socialization related to ICS that have been determined.

The KKTTSPS has a Work Program for the 2022-2023 period which was determined by the Head of KKTTSPS on 05 January 2022. The document has explained 16 types of programs along with their respective timelines, including:

- Work Review Meeting is held once a year in December.
- Evaluation of the Work Program every 3 months (quarterly), namely in January, April, July and October.
- Annual Member Meeting (RAT) is planned every year in March.

The Work Program for the 2022-2023 period was prepared based on the results of an annual review/evaluation of the program for the previous period and this was carried out by the management (ICS).

#### **MS A and MS B:**

At the time of the audit activity, the KKTTSPS can show the implementation of the Work Program previously indicated, namely:

- Implementation of member internal audit activities on 12-19 December 2022 which is indicated along with the implementation documents. The implementation was carried out by 5 administrators for each member in 6 hamlets (Kampung Baru, Ujung Batu, Gapuk, Batu Lima, Karang Anyar and Kampung Malaka).
- Implementation of internal audit result non-conformities verification (there were 4 non-conformities that emerged) on 20-26 January 2023 and the results of all existing non-conformities have been fulfilled.
- Socialization related to RSPO for Independent Smallholders and HCV on 06 September 2022.
- Socialization related to Procedures, OHS and Administration on 07 September 2022.

All work programs that have been made have been carried out and carried out regular evaluations by the KKTTSPS. The result is that members can prove that they can implement ICS properly. Based on the explanation, it can be ascertained that KKTTSPS has carried out a work program that was made to ensure that members always comply with this (this proves that the group manager has planned and executed the program for implementing ICS properly).

#### **A2.2**

##### **Eligibility and MS B:**

Based on interviews with Chairperson (Group Managers), it is known that group managers have an understanding of the RSPO standard for Independent Smallholders. Group managers have received training related to RSPO Independent Smallholders organized by Fortasbi on 05 June 2021 and have been refreshed in 06 September 2022 organized by Asian Agri.

The ICS organization consists of group managers, secretaries, registration division, environment division, extension division, FFB division, IPM division and field coordinators with duties and responsibilities such as:

- IPM division with duties and functions, namely making proposals and work programs for field visits that will be identified or attacked by pests and plant diseases.
- Extension division with duties and functions, namely fostering cooperatives member in good agriculture practice activities.

Based on interviews with ICS members, it is known that they are able to explain the responsibilities for each division and are competent in managing the group.

The cooperative also cooperates with other parties (Fortasbi, Apical, Kao and Asian Agri) in financial/other resources to run the cooperative, such as providing monthly honoraria to the cooperative management, and others benefit.

#### **MS A and MS B:**

To prove the competency of the Chairperson (Group Managers) of KKTTSPS was good enough at the time the audit was carried out, the auditors conducted interviews and concluded the role played by the Chairperson (Group Managers). The result is that the Chairperson (Group Managers) has a fairly good understanding of RSPO Independent Smallholders, member/administrator arrangements during audit activities, providing sufficiently accurate information for sufficient audit needs and so on.

#### **A2.3**

##### **Eligibility:**

The KKTTSPS can show the 2022-2023 work plan document contained in the ICS work plan related to training/socialization to member and management. All of these trainings are planned to be carried out before the audit activities are carried out, namely in January 2022, based on the realization of the 2022-2023 work plan as well as several related supporting documents such as activity reports, training activity reports and monitoring reports showing that all activities planned in the 2022-2023 Work Plan implemented according



to the specified schedule. The training activities also adjust to the needs of members obtained from the results of monthly meetings. The training activities also continue to be developed in accordance with the request in the RSPO standard, which is accompanied by Fortasbi and Asian Agri in the preparation of components in the training and its speakers. Topics or materials provided for training based on the realization of the 2022 work plan include training on Good Agricultural Practices (GAP), Occupational Health and Safety (OHS), environmental conservation, and other materials related to the RSPO.

Based on the above, it is known that KKTTPS has an annual group training plan covering the RSPO Independent Smallholder Standard including KKTTPS management (including the objectives and structure of the cooperative as well as related certification procedures or processes) and other topics as regulated in the RSPO Independent Smallholder Standard.

**MS A:**

The Chairperson (Group Manager) can demonstrate the gradual approach that has been taken to members to take part in each training carried out, this can be seen from the KKTTPS's journey process to take certification which has been running for approximately 3 years, the training attendance list and the same type of training are repeated to ensure all members have received the same training. The Group manager can show documentation of the realization of training in 2022-2023. The document shows that all members who are members of the KKTTPS in 2023, namely a total of 239 members have received training and for the addition of new members in 2022 before they officially join, they have received some of the same training. Some of the trainings that have been implemented include:

- Socialization related to RSPO for Independent Smallholders and HCV on 06 September 2022.
- Socialization related to Procedures, OHS and Administration on 07 September 2022.

Based on the description above, it is known that the Chairperson (Group Manager) carries out a phased approach to ensure that members have progressively attended training related to the RSPO Independent Smallholder Standard, cooperative management and other topics as stipulated in the RISS according to the cooperative's annual training plan.

**MS B:**

Based on the results of interviews with a sample of 20 members, it was concluded that the level of understanding of group members about RSPO Independent Smallholders Standard, group management and certification requirements including awareness of GAP (Good Agriculture Practices), HCV (High Conservation Value), environmental management, social welfare of workers and business operations is quite good. The resource person was able to explain well regarding all the questions given. This showed that members had received complete and evenly distributed information across all members. The resource person also added that discussions related to the training were not limited to the planned schedule, they also held non-formal discussions according to needs, for example during field monitoring activities by village administrators or other meetings.

Based on this explanation, it can be concluded that all members attended the training and were able to prove their understanding of the RSPO Independent Smallholder Standard including group management and certification requirements including understanding of HDI, HCV, environmental protection, social welfare of workers, and business operations.

Status: Comply
----------------

**B – ICS: Policies and Management**
**B.1 The group Internal Control System contains documented policies and procedures for operational management.**
**B1.1**
**Eligibility:**

Cooperatives have policies or procedures related to member expulsion as well as providing sanctions to members in the SOP for Warning and Sanctioning Members (No.4/SOP/SPA/ICS/KK-TTPS/IV/2021) which was issued on 09 April 2021. The procedure informs several things, for example:

- If there is a minor violation such as administrative disorder, a warning will be given in the form of a warning letter 1 by the ICS manager, and advised to be in an orderly administration, given 90 days to correct it.
- If there is a serious violation which is at risk of defamation of the organization, financial embezzlement, manipulation, the ICS manager has the right to remove members from membership.
- To members who have received warning letters and sanctions, are given the opportunity to defend and prove to explain their condition that they are not guilty, by showing the evidence to the ICS manager.



Cooperatives also have policies or procedures related to periodic inspections (internal audits) in the SOP for the Implementation of Internal Appraisers (No.1/SOP/SPI/ICS/KK-TTPS/IV/2021) on 09 April 2021. The procedure explains the stages of the assessment internal processes starting from team formation, job descriptions of internal appraisers, preparation of checklists, preparation of assessment plans, writing and reporting to follow-up assessments. The number of members audited is the total number of members divided by 12 months, so that within 1 year all members have been assessed.

#### MS A and MS B:

The cooperative shows records of the latest audit assessments that have been carried out from 12-19 December 2022. The scope of the internal audit is all members, totaling 239 members. From the recordings, 5 non-conformities were found, for management of the river border that has not been maximized for the members whose land is passed by the river.

To ensure that these non-conformities are comply, the company re-verifies these matters. The results were further verified on 20-26 January 2023 and the results of all existing non-conformities have been fulfilled (all 4 non-conformities).

#### B1.2

##### Eligibility; MS A and MS B:

Regarding member information, it is contained in the verification and assessment form for new members which has been signed by each member. The document contains information related to the legality of land ownership, land area, year of planting, signed smallholder declaration (sustainability commitment), ownership status to location assessment and completeness of registration files.

In addition, the certificate holder also manages the production data for each member which is stored in the cooperation office. The production data contains the results of production and sales made by each member.

Status: Comply

#### C – ICS: Group business planning

##### C.1 The group has a group Business Plan prepared with the participation and contributions of group members.

#### C1.1

##### Eligibility:

The cooperative has a long-term plan made with a span of 4 years with a period of 2022 – 2025 which was approved by the cooperative manager on 18 December 2020 by all cooperative management which was made based on a management review meeting that included production estimates from 6 farmer groups, such as:

Farmers	Estimated Production (Tons)			
	2022	2023	2024	2025
Sitiawan Kampung Baru	1,200	1,240	1,280	1,240
Ujung Batu	1,939	2,000	2,060	2,000
Batu Lima	2,496	2,600	2,680	2,600
Gapuk	4,900	5,050	5,200	5,040
Kampung Malaka	650	670	690	670
Karang Anyar	2,680	2,680	2,760	2,670
<b>Total</b>	<b>13,800</b>	<b>14,240</b>	<b>14,670</b>	<b>14,220</b>

The KKTTSPS has also planned to add members in 2023 as many as 580 new farmers with a total area of 1,410 Ha in August 2023. The production estimates listed above are still projected for the condition of members as many as 239 farmers and the projections for additions have not been carried out because they are still in the stage of planning and further verification of member registration requirements.

#### MS A:

The cooperative business plan is carried out in accordance with the results of the planning where in its implementation the detailed annual and monthly activity plans are then reviewed annually by all members of the cooperative in parallel through representatives from each group which are documented in the last management review activity carried out on 10 January 2022. From the results of the management review, it can be concluded that the realization of production has exceeded the estimated production in 2021, which

is 107%. The implementation and management review are carried out internally by the KKTTSPS board and the results are disseminated to all members after the review is carried out. If later there are things that are unclear from the results of the review, members can ask them directly. During interviews with members at the audit location, they stated that the results of the evaluation (management review) were always socialized by the management so that the results could be fully known by the members.

For the 2022 period, a management review was carried out on January 11, 2023. The result is that production has increased by 0.5% from the 2022 projection of 13,857.7 Tons. All members have SPPL and STDB.

Are the group members involved in implementation and review of the business plan?

MS B:

The KKTTSPS already has a very good document storage/safekeeping and recording system in the form of hard files and soft files. During the audit, it does not take long to find the documents needed as audit evidence. All requested documents can be shown properly and are traceable, including FFB production records.

The results of interviews with members of the cooperative stated that they had really felt the difference since joining the cooperative, for example increasing knowledge of oil palm management and assistance for needs in oil palm management such as fertilizer and PPE.

The cooperative business plan is carried out in accordance with the results of the planning, where from the results of a management review was also carried out on 11 January 2023. The result is that production has increased by 0.5% from the 2022 projection of 13,857.7 Tons, all members have SPPL and STDB. The cooperative also shows the payment of salaries for each cooperative management every month, on time every 5th. Based on interviews with the management as well, the cooperative has not yet conducted a financial audit report because the management was only formed in the first year, but the cooperative management is committed to conducting a financial audit next year by working with third parties.

The organization is also able to show evidence of implementation related to transparency and good financial management, for example by conducting a management review (carried out on 11 January 2023) related to:

- Internal audit results.
- Feedback and concern among relevant parties.
- Performance of the quality and environmental management system including the achievement of its goals and objectives.
- Evaluation of compliance with regulations and other requirements.
- Goals for improvement.

Status: Comply

## C.2 The ICS of the group is integrated with the Group's Management Plan.

### C.2.1

#### Eligibility:

The cooperative has a long-term plan made with a span of 4 years with a period of 2022 – 2025 which was approved by the cooperative manager on 18 December 2020 by all cooperative management which was made based on a management review meeting that included production estimates from 6 farmer groups.

The cooperative also shows the 2022-2023 training plan documents, such as:

- Socialization of RSPO P&C
- Socialization of good agriculture practice
- Socialization of OHS and basic firefighting

All training/knowledge enhancement plans are carried out to increase the productivity of group members. In addition, the cooperative management also conducts good data collection on FFB production, as well as approaches factories that are around them to become buyers of the FFB produced in an effort to strengthen relationships in the supply chain. Plans for continuous improvement projects that are included in the group management plan include continuously increasing human resource development targets both in terms of capacity and quantity of members. The group management plan has also included people who are responsible for implementing

the plan in their respective fields as evidenced by a very detailed and detailed organizational structure. The results of interviews with ICS show that they are very understanding and have realized the responsibility to implement the plans they are doing. The following is a list of SOPs that have been owned by the Cooperative is 41 SOP/Policies.

**MS A:**

The cooperative business plan is carried out in accordance with the results of the planning where in its implementation the detailed annual and monthly activity plans are then reviewed annually by all members of the cooperative in parallel through representatives from each group which are documented in the last management review activity carried out on 10 January 2022. From the results of the management review, it can be concluded that the realization of production has exceeded the estimated production in 2021, which is 107%.

For the 2022 period, a management review was also carried out on January 11, 2023. The result is that production has increased by 0.5% from the 2022 projection of 13,857.7 Tons. All members have *SPPL* and *STDB*.

**MS B:**

In ensuring that all members have complied with the independent smallholder standard, the cooperative management conducted an internal RSPO audit of cooperative members which was held on 12-19 December 2022 with the results of the audit that there were 4 non-compliances which were corrected (complied) on 26 January 2023. The cooperative business plan is carried out in accordance with the results of the planning, where from the results of a management review was also carried out on 11 January 2023. The result is that production has increased by 0.5% from the 2022 projection of 13,857.7 Tons, all members have *SPPL* and *STDB*.

Based on field visits and interviews with members of the group members (20 sampling members), it is known that smallholder have a fairly good awareness of the RSPO, best management practices, HCV management, and social welfare is quite good. Members can also demonstrate their understanding of some aspects of the RSPO, for example on implementing OHS in the field or best management practices.

Status: Comply
----------------

**D – ICS: Group Trading System for Certified Volumes**
**D.1 The group has a procedure and system in place for the tracking of FFB.**
**D.1.1**
**Eligibility; MS A and MS B:**

The cooperative has procedures related to monitoring and controlling FFB production and sales records in:

- SOP for Member FFB Registration (No.1/SOP/SPT/ICS/KK-TTPS/IV/2021)
- SOP for Sales of RSPO Certified FFB (No.2/SOP/SPT/ICS/KK-TTPS/IV/2021)

The association has established a system to trace the FFB which produced and sold by members through the SOP's above that's described, the association will be using *Book and Claim* to sold the RSPO certified FFB credit and not physical. Furthermore, The SOP's above has developed the procedure to trace and to track that the FFB produced by members, as well as the intended to be sold as RSPO certified. In the procedure has been set the prohibition to blend of certified and uncertified FFB. The harvesting of certified FFB will be record separately and will be report semesterly to the Association, then will be observed the reasonability with the area owned.

During field observation and interview, members can demonstrate FFB production calculation and separation between certified and uncertified as well as documentation method that will be carried out. Furthermore, to distinguish certified and uncertified areas in each plot, a marker/ members id is provided as information that the plot is a certified area.

The recording procedure explains that the cooperative represented by the FFB registration section will only document sales records from members of the Koperasi Konsumen Tebing Tinggi Pangkatan Sejahtera ICS. The person in charge periodically makes a report on the record of sales of FFB sales to the ICS Manager and displays it in the information available at the cooperative office. Since obtained RSPO Certificate in 17 May 2022, it was known if the certified FFB production sold as conventional, this is in line with the procedure above that mentioned if the sales method chosen by Associations is non-physical sales through the Book and Claim) scheme through Palm Trace. The detail of product as book and claim presented below:

- Transaction for 2,760 MT IS CSPO sales in 04 August 2023 from KKTTPS to Kao Corporation (Buyer) that has been accepted buying product in 05 August 2023.
- Transaction for 310 MT IS CSPKO sales in 04 August 2023 from KKTTPS to Kao Corporation (Buyer) that has been accepted buying product in 05 August 2023.

Currently, there is no sale of certified products, although the cooperative has a sales procedure that informs that cooperatives can sell certified products physically and on credit in accordance with the provisions of the RSPO certification system.

Status: Comply

## D.2 The group documents and implements a system for the tracking of FFB.

### D.2.1

Eligibility:  
NA

#### MS A and MS B:

The cooperative has managed records of production and sales of FFB produced by all its member farmers in recording the achievement of performance targets in 2022. The record contains information on farmer production in 2022/2023. For example, the cooperative shows a record annual production for the period May 2022 to April 2023 of 13,992.50 ton (20,42 ton/ha/year). In addition to total production, there are also production records for each farmer's land.

The SOP for Sales of RSPO Certified FFB (No.2/SOP/SPT/ICS/KK-TTPS/IV/2021) also explains that FFB records are separated between certified and non-certified FFB if the farmer owns land that is not part of the cooperative. This is aimed at ensuring that only sales of certified FFB are managed by the cooperative's records. Since Obtaining certificate of RSPO, CB set the projection of certified FFB, CSPO, CSPKO and CSPKE RSPO Certified for license period of 17 May 2022 – 16 May 2023, as described below

Table 1: Production Projection

Product	Volume / MT)
FFB	13,800
CSPO	2,760
CSPKE	379
CSPKO	310

Then, Association have been sold RSPO Certified Products in advance as credits (Book and Claims), as described below:

Table 2 : Certified Sold Product Sold

Product	Volume / MT)
FFB	-
CSPO	2,760
CSPKE	-
CSPKO	310

Based on the results of the explanation above, it is known that KKTTPS does not make sales that exceed the current actual production. Sales are made using the book and claim method where no physical sales of FFB certified are made. Based on interviews with 20 sampling members in the Batu Lima, Gapuk and Kampung Malaka Group Farmers, they have learned to always record and ensure the shipment/sale of FFB is certified FFB originating from land that has been registered with the farmer group.

Status: Comply

## D.3 The group has a procedure and system for premium distribution.

### D.3.1

Eligibility:

The cooperative has a procedure or policy related to premium distribution in the Joint Decree Document on Procedure for Receipt of Credit Sales Funds and Management of RSPO Credit Sales Funds (No.01/SKB/ICS/KK-TTPS/IV/2021) which is revised on 01 February 2023. The document describes the distribution of premiums starting from the flow of funds receipt, disbursement of funds

to the allocation of funds. Regarding the management of funds, they will be managed according to their mutually agreed designations, with details as follows:

No	Description	Percentage
1	Farmer/Member Welfare	30%
2	Cooperative Operations	18%
3	External Audit	10%
4	RSPO Certification Unit Personnel Financing	20%
5	Business Development	10%
6	RAT Cost	5%
7	Social Fund	4%
8	Reserved Fund	3%

The determination of the premium distribution was carried out based on the results of discussions with the advisors (Fortasbi, Asian Agri and others) and socialization has been given to members to prepare for distribution in the 2023-2024 period. This is in accordance with the results of interviews with the members who became the sampling, where they stated that there was a change in the distribution of premiums from the previous period.

#### MS A and MS B:

Premium payments are made based on an agreement between the management and members of the association through the annual member meeting. The final distribution of results was carried out in October 2022 to all farmers, based on the results of the previous meeting with members, where the details of the distribution of results for all members to receive a premium from the sale of RSPO credit of Rp. 490,682/ha, in accordance with the Cooperative procedure in 2022.

Based on the results of interviews with 20 sampling members of Batu Lima, Gapuk and Kampung Malaka Group Farmers, there are no complaints related to the distribution of premiums.

Status: Comply

3.2.2 The Principle Criteria and Indicators that are applicable to both smallholders (as individual group members) and group managers

Ref Std.	VERIFICATION RESULT of MUTU-Certification	
<b>PRINCIPLE 1: OPTIMISE PRODUCTIVITY, EFFICIENCY, POSITIVE IMPACTS AND RESILIENCE</b>		
<b>1.1</b>		
<b>Smallholders establish a legal entity which has organisational capacity to comply with the RSPO Independent Smallholder Standard.</b>		
<p><b>Eligibility; MS A and MS B:</b></p> <p>The cooperative has kept all complete data for each member available in the cooperative office. Document the member data. The document contains information related to the legality of land ownership, land area, year of planting, signed smallholder declaration (sustainability commitment), ownership status to location assessment and completeness of registration files. All documents are signed by each member without any coercion.</p> <p>Group manager have an Internal Control System which informed on SOP for Membership Criteria and Requirements (No. 1/SOP/SPA/ICS/KK-TTPS/IV/2021) which was set on 09 April 2021. The document informs about requirements that must be completed by prospective members, including the fulfillment of the legality of land ownership. Based on documents verifications, interviews with associations management as well as members during field visit it was known if all members have signed and acknowledged membership requirements. All members prior joint with the association need to complete the requirements as a prospective member, among others copy id cards, land ownerships evidence, family identity cards and etc. furthermore the members also need to sign several documents as follows:</p> <ul style="list-style-type: none"> <li>• Members statement letter of willingness to follow the RSPO certification as mentioned in annex 2</li> <li>• Statement letter of Smallholder Declaration as mentioned in annex 2</li> <li>• Statement letter of RSPO Certification commitment as mentioned in annex 2.</li> </ul> <p>The organization is also able to show evidence of implementation ICS related to transparency and good financial management, for example by conducting a management review (carried out on 11 January 2023) related to:</p> <ul style="list-style-type: none"> <li>• Internal audit results.</li> <li>• Feedback and concern among relevant parties.</li> <li>• Performance of the quality and environmental management system including the achievement of its goals and objectives.</li> <li>• Evaluation of compliance with regulations and other requirements.</li> <li>• Goals for improvement related to financial management plan which include the current performance and forecast..</li> </ul> <p>The cooperation also has legality in the form of a business permit document contained in the Document Number of Business Registration (0311210049367) issued by the government on 03 November 2021. In addition, the cooperation also had ID Tax Number (53.139.870.9-116.000)</p> <p>Based on the latest assessment and onsite audit, currently in the 2023 period there are 239 members. Based on the results of the document review at the cooperative office. the auditor found on a sample basis that 20 members had signed a declaration commitment to comply with the RSPO principles as well as the requirements of other members. For example, farmers with the initials Sri Linda Wati signed the commitments and terms of cooperative members on 19 August 2021. This was also confirmed by the results of field interviews, where the farmers admitted that they had signed all the requirements.</p> <p>The cooperative also had training plan and conducted training which was conducted on 06 September 2022 to farmers (including 20 samples of farmers) and ICS members. The training carried out was related to the best aspects of oil palm cultivation, waste management, OHS aspects, employment, to the prohibition of employing child under 18 age. One of the trainings also discussed aspects of financial management such as selling FFB to farmers, starting from the separation of certified FFB, recording sales, to reporting to the head of the farmer group. Farmers can also discuss with the cooperative management regarding the purchase of fertilizers and pesticide materials.</p>		
	Status: Comply	



<b>1.2</b> <b>Smallholders have the capacity to effectively manage their farm.</b>	<p><b>Eligibility; MS A and MS B:</b>  The members/farmers of KKTTPS have attended the trainings provided by the organization. One of the trainings carried out was related to recording production and also selling FFB. For example, farmers show auditors the recorded production records contained in the “<i>Laporan Kegiatan Kebun Petani</i>” especially for 20 sampling members. The recording contains information such as monthly FFB production, pesticide use, and fertilizer use. The records submit from members to cooperation every month.</p> <p>Some training recordings have also been shown, for example:</p> <ul style="list-style-type: none"> <li>• Socialization related to RSPO for Independent Smallholders and HCV on 06 September 2022.</li> <li>• Socialization related to Procedures, OHS and Administration on 07 September 2022.</li> </ul> <p>The training record contains information on the attendance list of members, documentation and also training materials in the form of presentations. Apart from that, the cooperative also has training data that has been carried out by each member which has been carried out since 2020 until the 2022 update. Based on the results of interviews with smallholder member in the field (Batu Lima, Gapuk and Kampung Malaka), members have recordings of FFB sales which they routinely inform to cooperation every month.</p> <p>In line with the explanation in the indicator 1.1 MS B, one of the trainings attended (training records on September 2022) by the farmers also discussed aspects of financial management such as selling FFB to farmers, starting from the separation of certified FFB, recording sales, to reporting to the head of the farmer group. Farmers can also discuss with the cooperative management regarding the purchase of fertilizers and pesticide materials.</p> <p>Are auditor interview smallholders and workers to verify that the implementation of the training programme and the effectiveness of the training.</p>
	Status: Comply
<b>1.3</b> <b>Smallholders implement good agricultural practices (GAP) on their farms.</b>	<p><b>Eligibility:</b>  Smallholders have signed the Smallholder Declaration that requires them to commit towards implementing good agricultural practices on their farms. For example, what is contained in the Smallholder Declaration document named Sri Linda Wati, which was signed on August 19, 2021, states "committed to using the best management practices for oil palm".</p> <p><b>MS A:</b>  Based on the results of interviews with group members, it was conveyed that all group members had received socialization regarding the best Good Agricultural Processes such as harvesting, spraying and fertilizing procedures. For example, the recording of the training conducted by Asian Agri for the Setiawan Kampung Baru Farmers Group on September 7 2022. In addition, the group members interviewed already had an understanding and briefly explained the best plantation management practices that had been carried out.</p> <p>In addition, ICS can show identification of training needs and training programs on a regular basis to all group members to ensure that training has been planned for continuous improvement.</p> <p><b>MS B:</b>  Based on the results of field observations, for example on the group members' plot located in Kampung Gapuk, it is known that the group members have applied the best plantation management practices such as how to pruning, application &amp; mitigation of pesticide use, manuring plan and implementation, etc.</p> <p>Group members record the production of FFB produced at each location owned along with sales and costs incurred. Farm productivity is monitored by the cooperative extension sector. For example, the record shown on the land of a member named Sri Linda Wati in April 2023 contains information such as FFB production and sales, as follows:</p> <ul style="list-style-type: none"> <li>• FFB production on 5 April 2023 amounted to 826 Kg with a selling price of IDR 2,300/Kg</li> <li>• FFB production on 20 April 2023 amounted to 1,010 Kg with a selling price of IDR 2,160/Kg</li> </ul>
	Status: Comply



**PRINCIPLE 2: ENSURE LEGALITY, RESPECT FOR LAND RIGHTS AND COMMUNITY WELLBEING**
**2.1**

**Smallholders have legal or customary rights to use the land in accordance with national and local laws and customary practices.**

**Eligibility; MS A and MS B:**

The KKTTTPS already owns and manages legality data belonging to all its members for each land they own. As an example, legality documents have been shown for as many as 20 members who were sampled for the audit with the following details:

- 10 members already have a Land Certificate in the form of SHM.
- 10 members already have Land Certificates in the form of SKT/SKGR

Based on the results of the verification of the land ownership documents above, all land certificates are in accordance with the names of farmer members registered in the member information data. Besides that, based on the results of interviews with the National Land Agency, it is known that currently the Land Certificates that are recognized in Indonesia are SHM, SKT, SKGR and others. However, of all the Land Certificates, the highest and most powerful legal regulations are SHM. The KKTTTPS has also targeted the Long-Term Program for the 2023-2027 period to convert all Land Certificates that are not yet SHM to become SHM.

In addition to information related to the legality of land ownership, farmers also have clear boundaries in their respective areas. Auditors made field observations to several farmer groups (Batu Lima, Gapuk and Kampung Malaka). Based on field observations, it is clear that the boundaries of the member's land area are in the form of stakes poles, ditches and piles of palm oil fronds/trunks. The cooperative also monitors the condition of the stakes and boundaries of farmers' areas in the recording of internal audit activities carried out in November 2022.

Please added informations if Smallholders provide the coordinates or maps of their plots and evidence of ownership or rights to use the land. (Reference indicator 1.1.E, Annex 2)

Status: Comply

**2.2**

**Smallholders have not acquired lands from indigenous peoples, local communities or other users without their free, prior and informed consent (FPIC), based on a simplified FPIC approach.**

**Eligibility; MS A and MS B:**

The KKTTTPS has procedure of Transfer of Legal Rights Compensation No. 5/Sekretaris/ICS/KK-TTPS/IV/2021 dated 09 April 2021 (there is no change from last audit). In the procedure explained that for members who will transfer legal rights to land ownership, it must be accompanied by evidence known by the Village Head and witnesses of sale and purchase. Transfer of legal rights is carried out without coercion from any party.

There are no customary rights and traditional rights on the land of KKTTTPS members, all plots are areas with individual ownership rights. Members have a land tenure statement which also provides information about land maps, coordinates and others. The evidence of land ownership such as a land certificate has been signed by the village head (SKT) and signed by National Land Agency (SHM).

Results of interview with group manager, Agricultural Agency, members of group and heads of surrounding village (Hamlets of Batu Lima and Village of Tebing Tinggi), obtained information that land of KKTTTPS member is individual land that has been passed down from generation to generation of their family and purchase through FPIC method. Besides, it known that there has never been a land dispute between KKTTTPS member farmers or with surrounding community. Based on document verification and result of interview with members, it known that there is no difference in name of the land owner and the name on the land ownership document. Result of interview with members also showed that land ownership process through buying has been through process of FPIC.

In addition, each member sampled (20 members) has owned and filled out the RSPO Independent Smallholder Dispute Disclosure Form which is used as an implementation of Ensure Legality, Respect for Land Rights and Community Wellbeing for KKTTTPS members. Each member has signed it on 14 March 2023 which is known by the Chairperson (Group Manager).

Status: Comply

**2.3**

**The right to use the land is not disputed by indigenous peoples, local communities or other users.**

**Eligibility; MS A and MS B:**

The result of document verification and interview with KKTTPS and its sampling members (20 members), it was found that all members had signed and acknowledged membership requirements. Before after KKTTPS, all members need to complete the requirements as prospective members, including photocopy of ID card, evidence of land ownership, family identity card, statement of commitment to RSPO certification as referred to in Principle 2, and others. The commitment and statement of certification members are as follows:

- Not clearing or acquiring land from indigenous peoples, local communities or other users without their free, prior and informed consent (FPIC), based on a simplified approach to FPIC
- Resolve existing disputes

Results of field observations and interview group manager, Agricultural Agency, members and head of surrounding village (Hamlets of Batu Lima and Village of Tebing Tinggi), it is known that there are no land disputes on the land of KKTTPS member.

During audit, audit team visited sample of KKTTPS members' plots. It was found that each plot had evidence of land certificates from head of village and certificates of ownership. Result of field observation, it is known that all boundaries are clearly visible in the field. Boundaries are in the form boundary stakes pole, etc. It is also known that members of KKTTPS have been operating on their respective lands.

Results of interview with group manager and member of KKTTPS, it is known that boundaries check of member's area is carried out routinely along with operational activities to ensure that no area boundaries are violated. Result of field observation and interview with group manager, Agricultural Agency, KKTTPS members and head of surrounding village (Hamlets of Batu Lima and Village of Tebing Tinggi), it is known that there are no land disputes on the land of KKTTPS member.

Status: Comply

## 2.4

**Smallholder plots are located outside of areas classified as national parks or protected areas, as defined by national, regional or local law or as specified in National Interpretations.**

Eligibility; MS A and MS B:

The results of document verification and comparison with land distribution maps with regional spatial maps (overlay of operational map with PIAPS (*Peta Indikatif Areal Perhutanan Sosial*) Map in Sumatera Utara based on Decree No. 2111 on 2020) with scale of 1:200.000, show that there are no areas classified as production forest/limited production forest, national parks or protected areas as defined by national, regional or local laws or as specified in the National Interpretation in group areas. Results of the field observation also showed that there were no locations that was included in these areas.

KKTTPS already has a list of locations for all its members with details such as coordinates, land status, land area and other legal status that are stored and well documented. KKTTPS has been conducted field survey for all member's land, re-mapping, setting the geolocation and boundary. Moreover, all members' land has been overlay with Indicative and Social Forestry Map based on Environmental and Forestry Minister Decree (No. SK.2111/MENLHK-PKTL/REN/PLA.0/4/2020) and known that all smallholders land located outside the national forest area.

Status: Comply

## 2.5

**For new plantings, smallholders do not clear or acquire any land without obtaining the free, prior and informed consent (FPIC), of indigenous people and/ or local communities and/ or other users, based on a simplified FPIC approach.**

**Do any smallholders within the group have plans for new plantings of oil palm? If none, SKIP**

Eligibility; MS A and MS B:

Based on interview with Chairperson and sampling members (20 members) there is no plan for new planting in certified area since 2022 until now. Based on this, this indicator is declared Not Applicable.

Status: Comply

## PRINCIPLE #3 RESPECT HUMAN RIGHTS, INCLUDING WORKERS' RIGHTS AND CONDITIONS

### 3.1

**There is no use of forced labour.**

<b>Eligibility:</b> All group members have signed a declaration to commit to not use force labour, for example contained in the Sri Linda Wati Farmers Statement which was signed on 19 August 2021 which contains a commitment "to ensure no forced labor practices in plantation operations and stop forced labor practices that are still There is".  Group members have provided information on sources of labor such as work agreements between land owners and workers employed on their plot which are made in 2 copies and also signed by the ICS Manager.  <b>MS A:</b> Based on the results of interviews with group members, information was obtained that all group members had received training and had an understanding of free and fair employment. Smallholders can show records of socialization, for example that carried out by Asian Agri to the Setiawan Kampung Baru Farmers Group on September 6, 2022 which includes the prohibition of the following work practices: <ul style="list-style-type: none"> <li>• Retention of identity documents or passports;</li> <li>• Worker payment of recruitment fees;</li> <li>• Contract substitution;</li> <li>• Involuntary overtime;</li> <li>• Lack of freedom of workers to resign;</li> <li>• Penalty for termination of employment;</li> <li>• Debt bondage;</li> <li>• Withholding of wages</li> </ul> <b>MS B:</b> Based on the results of interviews with group members, information was obtained that several group members employed workers from the surrounding community or relatives with clear work agreements. In addition, based on the results of field observations and interviews with workers, for example during harvesting activities in one of the group member plots, information was obtained that workers have unrestricted access to their identity documents, have freedom of movement and can declare that their employment is freely chosen.		
	<b>Status: Comply</b>	
<b>3.2</b> <b>Children are not employed or exploited. Work by children is acceptable on family farms, under adult supervision and when not interfering with education programmes. Children are not exposed to hazardous working conditions.</b>		
<b>Eligibility:</b> All group members have signed a declaration to commit to not use child labour, for example contained in the Sri Linda Wati Farmers Statement which was signed on 19 August 2021 which contains the commitment "ensure no child labor on farm operations and end any existing child labour".  Based on the results of interviews with group members, information was obtained that all group members had received training and had an understanding of child labor practices and a commitment not to use child labour. Smallholders can show recordings of socialization, for example that carried out by Asian Agri to the Setiawan Kampung Baru Farmers Group on September 6, 2022.  <b>MS A and MS B:</b> Based on the results of the interviews and review of the list of workers employed by the group members, information was obtained that all workers employed by the group members were over 18 years of age.		
	<b>Status: Comply</b>	
<b>3.3</b> <b>Workers' pay complies with minimum legal requirements, mandatory industry standards as defined by national law or collective bargaining, whichever takes priority in local regulations.</b>		
<b>Are there workers on the farm? If no, SKIP</b>		
<b>Eligibility:</b> All group members have signed a declaration to commit to pay workers according to minimum legal requirements or mandatory		

industry standards, for example contained in the Sri Linda Wati Farmers Declaration signed on 19 August 2021 which contains a commitment to the willingness of farmers to pay wages according to the national level.

Based on the results of interviews with group members, information was obtained that all group members had received training and had an understanding of minimum pay according to legal requirements or mandatory industry standards.

#### MS A and MS B:

Associations can show work agreements between landowners and all workers, including vulnerable groups and women, which contain information including:

- Duties and responsibilities
- Work termination
- Wages for each type of work include:
  - Harvest of IDR 150,000/ton
  - Pruning of IDR 400,000/ha
  - Fertilizer Rp. 10,000/zak
  - Spraying IDR 200,000/ha
- Use of PPE while working

Based on the results of interviews with workers, for example during harvesting activities, information was obtained that the wages agreed in the work agreement were nominal values that were generally accepted in the area where the farmer's plots were located. Based on that, all workers have documentation of payment (based on production) and the payment has been following the legal minimum wage rate and there is no discrimination against vulnerable group, including women. Apart from that, so far there have been no complaints related to the suitability of the nominal payment of wages with the agreed agreement where the amount of wages received by workers refers to the results of weighing the FFB of farmers carried out by agents and payments are made immediately after the FFB has been weighed. So that the company has confirmed OFI in the previous assessment, namely the payment of wages for each harvest activity is paid according to the cooperation contract.

Status: Comply
----------------

### 3.4

**Workers understand their rights and freedom to file a complaint to group manager or relevant third parties, including RSPO.**

**Are there workers on the farm? If no, SKIP**

#### Eligibility:

All group members have signed a declaration to commit to respect the rights of workers to file a complaint, for example contained in the Sri Linda Wati Farmers Statement signed on 19 August 2021 which contains a commitment to the willingness of farmers to respect workers' rights to submit complaints/complaints.

Smallholders also show SOP for complaints and external and internal complaints No: 6/Sekretari/ICS/KK-TTPS/IV/2021 which was last updated on 1 February 2023 with a flow chart as follows:

- Deliver direct email, sms, telephone or other communication media
- The secretary receives and records member complaints and suggestions
- ICS Manager mediates and resolves internally
- If not through internal means, involve a third party (mediator/authorized party)
- Complaint resolution suggestions

#### MS A:

Based on the results of interviews with group members, information was obtained that all group members had received training and had an understanding of workers' rights to submit complaints/grievances. Associations can show records of socialization, for example, that carried out by Asian Agri to the Setiawan Kampung Baru Farmers Group on September 6, 2022.

Based on the results of interviews with workers, for example during harvesting activities on group member land, information was obtained that workers already have an understanding of the delivery mechanism if there are complaints in the future and can convey complaints directly to the group manager.

<p>MS B:</p> <p>Based on the results of interviews with workers, for example during harvesting activities in group member plots, information was obtained that workers already have an understanding of the delivery mechanism if there are complaints in the future and can convey complaints directly to the group manager. Apart from that, in the past one year there have been no complaints either from group members or workers.</p>		
	Status: Comply	
<b>3.5</b> <b>Working conditions and facilities are safe and meet minimum legal requirements.</b>		
<p><b>Eligibility:</b></p> <p>All group members have signed a declaration to commit to providing safe working conditions and facilities for the workers, for example contained in the Sri Linda Wati Farmers Statement signed on 19 August 2021 which contains a commitment to "<i>Provide Safe Working Conditions and Facilities</i>".</p> <p><b>MS A:</b></p> <p>Smallholders can show the document Identification of Hazard Sources, Assessment and Risk Control which will be updated in January 2023. This document contains information regarding OHS identification in all activities on farmer's land including pesticide handling.</p> <p>Based on the results of interviews with group members, information was obtained that all group members had received training and had an understanding of the identified health and safety risks associated with farm work and the measures to mitigate the risks. Associations can show recordings of socialization, for example that carried out by Asian Agri to the Setiawan Kampung Baru Farmers Group on September 7, 2022.</p> <p><b>MS B:</b></p> <p>Based on the results of field observations and interviews with workers, for example during harvesting activities in one of the group member plots, information was obtained that workers had been provided with first aid kits as well as personal protective equipment according to the type of work based on predetermined hazard identification and risk control and free of charge and will be replaced if having damaged.</p> <p>The workers employed by the farmers are relatives or the local community, so no housing facilities are provided. The workers need access to toilets and drinking water in the landowner's house which is located not far from the plot members' location.</p>		
	Status: Comply	
<b>3.6</b> <b>There is no discrimination, harassment, or abuse on the farm</b>		
<b>Are there workers on the farm? If no, SKIP</b>		
<p><b>Eligibility:</b></p> <p>All group members have signed a declaration to commit to no discrimination, harassment or abuse on the farm, for example contained in the Sri Linda Wati Farmer Statement signed on 19 August 2021 which contains a commitment to "<i>no discrimination, harassment or abuse on the farm</i>".</p> <p><b>MS A:</b></p> <p>Based on the results of interviews with group members, information was obtained that all group members had received training and had an understanding of workplace discrimination, harassment and abuse and were aware of the need for a safe workspace. Associations can show records of socialization, for example, that carried out by Asian Agri to the Setiawan Kampung Baru Farmers Group on September 6, 2022.</p> <p>Can the smallholders demonstrate understanding on workplace discrimination, harassment and abuse and are aware of need for a safe workspace.</p> <p><b>MS B:</b></p> <p>Based on the results of field observations and interviews with workers, for example during harvesting activities on one of the group member's fields, information was obtained that workers had an understanding regarding discrimination, harassment or violence in the</p>		

work area and so far there have been no complaints on workplace discrimination, harassment and abuse.

Status: Comply

#### PRINCIPLE #4 PROTECT, CONSERVE AND ENHANCE ECOSYSTEMS AND THE ENVIRONMENT

##### 4.1

**High Conservation Values (HCVs) on the smallholder plot or within the managed area and High Carbon Stock (HCS) forests identified after November 2019 using the simplified combined HCV-HCS approach are managed to ensure that they are maintained and/or enhanced.**

##### Eligibility:

All group members have signed a declaration to commit to protect HCVs and HCS forests through the precautionary practices approach, for example contained in the Sri Linda Wati Farmers Statement which was signed on 19 August 2021.

Based on the results of interviews with group members and group managers, information was obtained that they had an understanding and could briefly explain the basic concepts of HCV areas and HCS forests.

##### MS A:

Based on the results of interviews with group members, information was obtained that all group members had received training and had an understanding of HCVs and HCS forests, Human-wildlife conflict and RTEs. Associations can show records of socialization, for example, that carried out by Asian Agri to the Setiawan Kampung Baru Farmers Group on September 6, 2022.

##### MS B:

In the Surveillance 1 assessment, there was no change in the scope of certification (area or number of members). KKTTPS has identified species related to RTE, HCV, HCS forest as evidenced from the document of High Conservation Value (HCV) Management Results for Independent Smallholders conducted by UD Lestari in November 2021 which was carried out in 1 village (6 Sub-Villages including Sub -Village of Gapuk, Kampung Malaka, Batu Lima, Ujung Batu, Sitiawan Kampung Baru, and Karang Anyar). The study has covered 239 farmer groups. This activity is carried out because independent smallholders must meet the RSPO principles and criteria to obtain certification. KKTTPS also has SOP No. 1/SOP/SL/ICS/KK-TTPS/IV/2021 regarding HCV Identification.

Based on results of initial identification, it was found that the types of HCV 1 and HCV 4 that were within the scope of certification are river borders and sacred graves. Based on the identification results from smallholders, for steep areas, swamps, peat, and graveyards are not found around smallholders' land locations.

According to Minister of Environment Regulation No. P.106 in 2018 concerning Protected Types of Plants and Animals, there are no protected flora identified in the plantation locations of KKTTPS members. While, there is one fauna which is categorized as protected animal that is Haliastur indus. The threats to fauna species are hunting, killing, and buying and selling of animals by local people or from outside. Conservation action that can be taken if it is found protected flora or fauna species that is environmental section will inform the local Nature Conservation Agency (BKSDA). KKTTPS also has provide information board regarding to protected fauna and flora in several places in smallholders' plots.

Based on the results of interviews with group members, information was obtained that all group members had received training and understood HCVs and HCS forests, Human-wildlife conflict and RTEs.

Status: Comply

##### 4.2

**Where the existing smallholder plot has been planted and cleared after November 2005 or is on an area identified as HCS forests after November 2019 up to the eligibility period, a remediation and compensation process appropriate for smallholders based on Land Use Change Analysis (LUCA) will be applicable (Reference preamble).**

##### Eligibility:

In the Surveillance 1 assessment, there was no change in the scope of certification (area or number of members). KKTTPS can show information on all plots of smallholders converted and planted with oil palm before and after 2005 as well as all coordinates/maps of plantation plots. A simplified combined HCV approach has also been used which can be proven in the statement of commitment document contained in Letter of Statement of Commitment of KKTTPS members which shown statements as follows:

- I recognize the importance of sustainable production.



- I will join a farmer group to pursue group certification of the RSPO ISH Standard and comply with the principles and their relevant criteria and indicators
- I will provide the following information to my and group manager:
  - All land holdings
  - Location (coordinates) of all plots currently planted with oil palm
  - Information on all plots converted and planted with oil palm after 2005 (through use of the simplified combined HCV-HCS approach for Smallholders)
  - Any plots located on steep slopes
  - Any plots located on peat
  - Details on plans for replanting and expansion of oil palm
  - Any existing land disputes
  - Ownership and land use status
  - Source of farm labor.

**MS A:**

In the Surveillance 1 assessment, there was no change in the scope of certification (area or number of members). LUCA disclosure was carried out by KKTTPS on 17 January 2022 for the scope of 239 KKTTPS members. The following are the stages in preparing changes to the LUCA disclosure document based on evidence of communication via email from the Alliance with the RSPO, including:

- On 17 January 2022, KKTTPS sent an initial disclosure of the initiation of LUCA management for a total of 239 farmers.
- On 19 January 2022, KKTTPS again sent updated data to the RSPO regarding the RSPO's response to the disclosure document that needed to be revised on 17 January 2021.
- On 2 February 2022, RSPO sent response from the previous KKTTPS email which refers to suggestion of scope area correction of KKTTPS.
- On 7 February 2022, KKTTPS again sent a response from the previous RSPO email by attaching the results of the correction where in the document there is an explanation of the difference in area data from the area document.
- On 17 February 2022, RSPO sent a response to clarification made by KKTTPS stating that the LUCA disclosure document had been accepted and have no further comment from the secretariat. Based on the revised disclosure form, all smallholders (239 farmers; 397 plots) have declared no new land clearing since Nov 2005, i.e No Liability. Therefore, LUCA is not required for this ISH group.

Based on verification of communication between RSPO and KKTTPS who worked together with Fortasbi, it shows that the KKTTPS has identified areas of land use change and has been submitted to the RSPO. Other evidence is the document of the results of the LUCA Study for the scope of 239 farmers conducted in 2022 with the final document out on 17 February 2022 where LUCA is not required for this ISH group.

**MS B:**

In the Surveillance 1 assessment, there was no change in the scope of certification (area or number of members). KKTTPS can show information on all plots of smallholders converted and planted with oil palm before and after 2005 as well as all coordinates/maps of plantation plots. A simplified combined HCV approach has also been used which can be proven in the statement of commitment document contained in Letter of Statement of Commitment of KKTTPS members which shown statements as follows:

- I recognize the importance of sustainable production.
- I will join a farmer group to pursue group certification of the RSPO ISH Standard and comply with the principles and their relevant criteria and indicators
- I will provide the following information to my and group manager:
  - All land holdings
  - Location (coordinates) of all plots currently planted with oil palm
  - Information on all plots converted and planted with oil palm after 2005 (through use of the simplified combined HCV-HCS approach for Smallholders)
  - Any plots located on steep slopes
  - Any plots located on peat
  - Details on plans for replanting and expansion of oil palm
  - Any existing land disputes
  - Ownership and land use status
  - Source of farm labor.



	Status: Comply	
4.3	<p>New plantings of independent smallholders, since November 2019:</p> <ul style="list-style-type: none"> <li>Do not replace any HCVs</li> <li>Do not replace any HCS forests as defined by the simplified combined HCV-HCS approach</li> <li>Are not on steep slopes (more than 25 degrees or as in NI)</li> <li>Are not on peat areas of any depth.</li> </ul> <p>Do any smallholders within the group have plans for new plantings of oil palm? If none, SKIP</p> <p>Eligibility; MS A and MS B: Based on the results of interviews with management and group members, information was obtained that the smallholders did not carry out new planting activities after November 2019 or plans for new plantings within the next 5 years, so this indicator is irrelevant.</p>	
	Status: Comply	
4.4	<p>Where smallholder plots exist on peat, subsidence and degradation of peat soils is minimised by use of best management practices.</p> <p>Do any smallholders within the group have existing plots on peat? If no, SKIP</p> <p>Eligibility; MS A and MS B: In the Surveillance 1 assessment, there was no change in the scope of certification (area or number of members). Based on document verification on the Indicative Map of Social Forestry Areas and soil type maps with a scale of 1:35,000, information was obtained that there was no peat in the plots managed by farmers so this indicator was irrelevant.</p>	
	Status: Comply	
4.5	<p>Plots on peat are replanted only on areas with low risk of flooding or saline intrusion as demonstrated by a risk assessment.</p> <p>Do any smallholders within the group have plans for replanting plots that are located on peat? If no, SKIP</p> <p>Eligibility; MS A and MS B: In the Surveillance 1 assessment, there was no change in the scope of certification (area or number of members). Based on document verification on the Indicative Map of Social Forestry Areas and soil type maps with a scale of 1:35,000, information was obtained that there was no peat in the plots managed by farmers so this indicator was irrelevant.</p>	
	Status: Comply	
4.6	<p>Fire is not used on the oil palm plot for preparing land or for pest control, nor open fire for waste management on the farm.</p> <p>Eligibility: All group members have signed a declaration to commit to no burning for preparing land or for pest control, nor open fire for waste management, for example contained in the Sri Linda Wati Farmers Statement which was signed on 19 August 2021.</p> <p>Based on the results of field observations and interviews with stakeholders, information was obtained that there is no physical evidence of new burning for oil palm land preparation, farm waste management and pest control by smallholders. In addition, based on the results of interviews with group members, information was obtained that most of the land planted with oil palm was ex-rice farming or bushland, so that land clearing did not need to be burned.</p> <p>MS A: Based on the results of interviews with group members, information was obtained that all group members had received training and had an understanding of no physical evidence of new burning (for land preparation, farm waste management, pest control and fire prevention). Associations can show recordings of socialization, for example that carried out by Asian Agri to the Setiawan Kampung Baru Farmers Group on September 7, 2022.</p> <p>Based on the results of field observations and interviews with stakeholders, information was obtained that there is no physical evidence of new burning for oil palm land preparation, farm waste management and pest control by smallholders.</p>	

**MS B:**

Based on the results of interviews with group members, information was obtained that most of the land planted with oil palm was ex-rice farming or bushland, so that land clearing did not need to be burned.

In handling waste generated during plantation activities, all waste is collected and stored in a waste storage warehouse by the Environmental Section of KKTTSPS. Waste generated is in the form of fertilizer sacks and pesticide packaging. Group members control pests in their fields with pesticides that have been recommended based on the results of studies conducted by group administrators and management. Farmers stated that they had never carried out pest control using fire which was in line with the absence of pest attacks based on the census records that had been carried out.

Status: Comply
----------------

**4.7**

**Riparian buffer zones are identified and managed to ensure they are maintained and/or enhanced.**

**Eligibility:**

In the Surveillance 1 assessment, there was no change in the scope of certification (area or number of members). KKTTSPS has identified a riparian buffer zone within the group with the result that there are several group members who are members of KKTTSPS that have a riparian zone in their plantation area with a total area of 7.4 ha.

All group members represented from sample members have also signed a declaration not to carry out new plantings in riverbank areas which can be demonstrated in statement of commitment document to protect HCV and HCS forests through precautionary practice approach of each member as contained in Letter of Statement of Commitment of each members. Letter of Statement of Commitment which has been signed by each member has shown statements as follows:

- Not clearing or acquiring land from indigenous peoples, local communities, or other users without their free, prior and informed consent (FPIC), based on a simplified FPIC approach
- Resolve any existing disputes
- No new planting or no expansion of existing farms in primary forests, HCV areas, HCS forests, in riparian areas, or on steep slopes (more than 25 degrees or as in National Interpretation)
- Protect HCVs and HCS forests through the precautionary practices approach
- No new planting on peat and replanting on peat only in areas with low risk of flooding and saline intrusion
- Use of best management practices for oil palm on peat
- No burning for preparing land or pest control
- Minimize and control erosion.

**MS A:**

Based on the results of interviews with group members, information was obtained that all group members had received training and understood riparian buffer zone management. Associations can show recordings of socialization, for example that carried out by Asian Agri to the Setiawan Kampung Baru Farmers Group on September 7, 2022.

**MS B:**

Based on result of verification of HCV document, LUCA and maps of distribution of member lands, it is shown that there are several lands belonging to KKTTSPS members located on river borders. The entire area is protected and designated as an HCV area with a total area of 7.4 Ha in riparian category. Some of activities planned are marking of area boundaries, prevention and control of land fire hazards, protection of areas and species of flora and fauna. Types of derivative activities that will be carried out include making signboards prohibiting land clearing by burning, installing a signboard for prohibiting spraying completely, and prohibiting hunting signboards.

Based on field observation in sample of smallholder areas, there is no riparian buffer zones were identified.

Status: Comply
----------------

**4.8**

**Pesticides are used in ways that do not endanger health of workers, family, communities or the environment.**

**Eligibility:**

All group members have signed a declaration to commit to phase out paraquat and pesticides categorized as WHO Class 1A or 1B

and those listed by the Stockholm or Rotterdam Convention, for example, contained in the Sri Linda Wati Farmers Declaration signed on 19 August 2021.

Based on the results of interviews with group members, information was obtained that all group members had an understanding of pesticides categorized as WHO Class 1A or 1B and those listed by the Stockholm or Rotterdam Conventions.

#### MS A:

Based on the results of interviews with group members, information was obtained that all group members had received training and had an understanding of best management practices for pesticides including pesticide usage, awareness on risks for pregnant and breastfeeding women and young workers, storage and disposal; paraquat and pesticides listed by WHO Class 1A or 1B, the Stockholm or Rotterdam Conventions. Associations can show recordings of socialization, for example that carried out by Asian Agri to the Setiawan Kampung Baru Farmers Group on September 7, 2022.

Smallholders provided records for the group manager of pesticide purchase and use. Based on the review of pesticide use recapitulation documents, it is known that during the last one year the following pesticides were used:

Farmer's Group	Pesticide	Total (L)
Setiawan Kampung Baru	Round Up (Glyphosate)	47.41
	Garlon (Trycophir)	2.16
Ujung Batu	Round Up (Glyphosate)	49.83
	Garlon (Trycophir)	15.71
Batu Lima	Round Up (Glyphosate)	55.77
	Garlon (Trycophir)	5.22
Gapuk	Round Up (Glyphosate)	198.42
	Garlon (Trycophir)	6.45
Kampung Malaka	Round Up (Glyphosate)	26.00
Karang Anyar	Round Up (Glyphosate)	136.17
	Garlon (Trycophir)	6.24

#### MS B:

The cooperative shows Decree No: 18/M-ICS/KK-TTPS/IV/2021 concerning reducing the use of the active chemical ingredient paraquat which includes a prohibition on the use of pesticides by pregnant and lactating women, and avoiding paraquats and pesticides that are categorized by WHO in class 1A or 1B, or listed in the Stockholm Convention or the Rotterdam Convention.

Based on the results of interviews with group members, information was obtained that there were no pregnant and breastfeeding women and young workers on the smallholder plots.

Smallholders provided records for the group manager of pesticide purchase and use. Based on the review of pesticide use recapitulation documents, it is known that during the last one year the following pesticides were used:

Farmer's Group	Pesticide	Total (L)
Setiawan Kampung Baru	Round Up (Glyphosate)	47.41
	Garlon (Trycophir)	2.16
Ujung Batu	Round Up (Glyphosate)	49.83
	Garlon (Trycophir)	15.71
Batu Lima	Round Up (Glyphosate)	55.77
	Garlon (Trycophir)	5.22

Gapuk	Round Up (Glyphosate)	198.42
	Garlon (Tryclophir)	6.45
Kampung Malaka	Round Up (Glyphosate)	26.00
Karang Anyar	Round Up (Glyphosate)	136.17
	Garlon (Tryclophir)	6.24
Status: Comply		
<b>4.9</b> <b>The group and smallholders manage pests, diseases, weeds and invasive introduced species using appropriate techniques, including but not limited to Integrated Pest Management (IPM) techniques.</b>		
<b>Eligibility:</b> NA		
<b>MS A:</b> All group members have signed a declaration to commit to best management practices, including to safe chemical use, IPM, weed and invasive species management, for example contained in the Sri Linda Wati Farmer's Statement signed on 19 August 2021.  Based on the results of interviews with group members, information was obtained that all group members had received training and had an understanding of best management practices, including to safe chemical use, IPM, weed and invasive species management. Associations can show recordings of socialization, for example that carried out by Asian Agri to the Setiawan Kampung Baru Farmers Group on September 7, 2022.		
<b>MS B:</b> As an effort to reduce the use of pesticides, smallholders implement integrated pest control by cultivating plants that function as natural predators for plant pests such as turnera and antigonon leptopus, and carry out pest control with chemicals only if attacks are found based on census results. Based on the results of a pest census (caterpillars, rats, etc.) it is known that there have been no pest attacks within the last 1 year, this is in line with the review of pesticide use documents which inform that there is no use of pesticides for animal pest control.  In addition, based on the results of interviews with group members, information was obtained that farmers had replaced the use of contact pesticides with systemic pesticides and sprayed only on target weeds and in the right way as an effort to reduce herbicide use.  Smallholders provided records for the group manager of pesticide purchase and use. Based on the review of pesticide use recapitulation documents, it is known that during the last one year the following pesticides were used:		
<b>Farmer's Group</b>	<b>Pesticide</b>	<b>Total (L)</b>
Setiawan Kampung Baru	Round Up (Glyphosate)	47.41
	Garlon (Tryclophir)	2.16
Ujung Batu	Round Up (Glyphosate)	49.83
	Garlon (Tryclophir)	15.71
Batu Lima	Round Up (Glyphosate)	55.77
	Garlon (Tryclophir)	5.22
Gapuk	Round Up (Glyphosate)	198.42
	Garlon (Tryclophir)	6.45
Kampung Malaka	Round Up (Glyphosate)	26.00
Karang Anyar	Round Up (Glyphosate)	136.17

Garlon (Tryclophir)		6.24
	Status: Comply	

**3.2 Conformity Checklist of Certificate and Trademark Use**

1.	Evidence of permission or approval certificate and trademark from Certification Body which submitted by Client.
ASA-1	Koperasi Konsumen Tebing Tinggi Pangkatan Sejahtera does not use RSPO trademark.
	Status: Comply
2.	Implementation of certificate and trademark used by Client comply with size and type (shape) against Guideline of trademark Use
ASA-1	Koperasi Konsumen Tebing Tinggi Pangkatan Sejahtera does not use RSPO trademark.
	Status: Comply
3.	Implementation of Certificate and Trademark is not used on product
ASA-1	Koperasi Konsumen Tebing Tinggi Pangkatan Sejahtera does not use RSPO trademark.
	Status: Comply
4.	Controlling of Certificate and Trademark, including withdrawing inappropriate trademark.
ASA-1	Koperasi Konsumen Tebing Tinggi Pangkatan Sejahtera does not use RSPO trademark.
	Status: Comply

### 3.3. Identification of Findings, Corrective Action, Observations, Opportunity for Improvement and Noteworthy Positive Components.

#### 3.3.1 Identification of Findings, Corrective Actions and Observations at IC Assessment

<i>NCR No.</i>	:		<i>Issued by</i>	:	
<i>Date Issued</i>	:		<i>Time Limit</i>	:	
<i>NC Grade</i>	:		<i>Date of Closing</i>	:	
<i>Standard Ref. &amp; Requirement</i>	:				
Evidence observed <i>(filled by auditor):</i>					
THERE IS NO NON-CONFORMITY FOUND DURING THIS AUDIT (MS-B).					
Non-Conformance Description <i>(filled by auditor):</i>					
Root Cause Analysis <i>(filled by organization audited):</i>					
Correction <i>(filled by organization audited):</i>					
Corrective Action <i>(filled by organization audited):</i>					
Assessor Evaluation and Conclusion <i>(filled by auditor):</i>					
<i>Verified by</i>	:				



**3.3.2 Identification of Findings, Corrective Actions and Observations at ASA-1 Assessment**

<i>NCR No.</i>	:		<i>Issued by</i>	:	
<i>Date Issued</i>	:		<i>Time Limit</i>	:	
<i>NC Grade</i>	:		<i>Date of Closing</i>	:	
<i>Standard Ref. &amp; Requirement</i>	:				
Evidence observed <i>(filled by auditor):</i>  THERE IS NO NON-CONFORMITY FOUND DURING THIS ANNUAL SURVEILLANCE ASSESSMENT (ASA-1) AND THE PREVIOUS AUDIT (MS-B).  Non-Conformance Description <i>(filled by auditor):</i>  					
Root Cause Analysis <i>(filled by organization audited):</i>  					
Correction <i>(filled by organization audited):</i>  					
Corrective Action <i>(filled by organization audited):</i>  					
Assessor Evaluation and Conclusion <i>(filled by auditor):</i>  					
<i>Verified by</i>	:				

**3.3.3. Opportunity for Improvement**

No	Ref. Std.	Description
1		
2		
3		

**3.3.4. Noteworthy Positive Components**

No	Description
1	Commitment smallholders who are members of the Koperasi Konsumen Tebing Tinggi Pangkatan Sejahtera to apply the principles of sustainable palm oil management
2	Presentation of documents and good communication with the companion team

**3.4 Summary of Arising Issues from Public and Auditor Verification.**

Public Issues (Institution/ NGO/Community)	Auditor Verification
<p>Farmers from Batu Lima, Gapuk, and Kampung Malaka Smallholder Group 04 May 2023</p> <ul style="list-style-type: none"> <li>Landowners are given the same opportunity to join cooperatives and there is no coercion on landowners who do not want to join.</li> <li>The requirements to join include proof of legal land ownership and the identity of the land owner.</li> <li>Many positive things have been received by landowners while joining cooperatives, especially in RSPO certification, such as additional knowledge in good land management, environmental management and other benefits in terms of premium sales of certified products.</li> <li>So far no complaints have been filed, cooperative fund management is carried out transparently, including the distribution of premiums according to the area of land owned by farmers.</li> </ul>	<p>There is no negative issues that need further verification.</p>
<p>National Land Agency of Labuhanbatu District 04 May 2023</p> <p>KKTPPS has complied with applicable regulations related land legality. There is no land disputes in area of KKTPPS members. There is also no area of KKTPPS members which is included in protected area. KKTPPS has progres of registering its area member into Land Owner Certificate (SHM).</p>	<p>There is no negative issues that need further verification.</p>
<p>Plantation Agency of Labuhanbatu District 04 May 2023</p> <p>The Plantation Agency fully supports the RSPO certification program carried out by smallholders who are members of KKTPPS as evidenced by the acceleration in the process of issuing the Cultivation Registration Certificate.</p>	<p>There is no negative issues that need further verification.</p>
<p>Head of Tebing Tinggi Village 04 May 2023</p> <p>Landowners are given the same opportunity to join cooperatives and there is no coercion on landowners who do not want to join, but landowners whose land is indicated to have disputes are not allowed to join before the problem is resolved.</p> <p>Many positive things have been received by the people who have joined the KKTPPS.</p>	<p>There is no negative issues that need further verification.</p>
<p>Manpower Agency of Labuhanbatu District 04 May 2023</p> <p>The Agency stated that at this time, it was proud to have Cooperatives of Oil Palm Smallholders that had RSPO certificates in their Regency, which continued to grow every year. From the Agency's point of view, for now the cooperative has</p>	<p>There is no negative issues that need further verification.</p>

Public Issues (Institution/ NGO/Community)	Auditor Verification
<p>complied with laws and regulations for the implementation of a fairly good employment system for its scale (especially for office/admin workers). For workers hired from the farmers' side, the Agency stated that currently the average farmer has been paid the appropriate wages and the farmers have had an employment agreement with each of their workers. This is appreciated quite well by the Agency and is one of the regulations that is quite good and the hope can always be improved.</p>	

4.0	<b>CERTIFIED ORGANISATION'S ACKNOWLEDGEMENT OF INTERNAL RESPONSIBILITY</b>
4.1	<b>Formal Sign-off of Assessment Findings</b>
	<p>Hereunder sign by management representative from inspected company to acknowledge a field assessment and agree for all content explained in this assessment report, included of non-compliance findings.</p> <p>Signed on behalf of:</p> <div style="display: flex; justify-content: space-between; align-items: flex-end; margin-top: 100px;"> <div style="text-align: center;"> <p>Koperasi Konsumen Tebing Tinggi Pangkatan Sejahtera Management Representative</p>  <p><b>Khairul Anam</b> Thursday, 18 May 2023</p> </div> <div style="text-align: center;"> <p>Mutuagung Lestari Lead Auditor</p>  <p><b>Hasiholan Sihombing</b> Thursday, 18 May 2023</p> </div> </div>

**Appendix 1. List of Stakeholder Contacted in the RSPO Certification Process**

No	Institution/ NGO/ Community	Address	Phone/ Email	Form of Communication	Date of Contact	Response	
						Yes	No
1	6 Farmers of Batu Lima Smallholders Group	Labuhanbatu District	-	Direct Interview	03 May 2023	√	-
2	8 Farmers of Gapuk Smallholders Group	Labuhanbatu District	-	Direct Interview	03 May 2023	√	-
3	6 Farmers of Kampung Malaka Smallholders Group	Labuhanbatu District	-	Direct Interview	03 May 2023	√	-
4	Environmental Agency	Labuhanbatu District	-	Interview By Phone	04 May 2023	√	-
5	National Land Agency	Labuhanbatu District	-	Interview By Phone	04 May 2023	√	-
6	Plantation Agency	Labuhanbatu District	-	Interview By Phone	04 May 2023	√	-
7	Head of Tebing Tinggi Village	Labuhanbatu District	-	Interview By Phone	04 May 2023	√	-
8	Manpower Agency	Labuhanbatu District	-	Interview By Phone	04 May 2023	√	-
9	WWF	Jakarta	-	Questionnaire By Email	18 April 2023	-	√
10	Sawit Watch	Jakarta	-	Questionnaire By Email	18 April 2023	-	√
11	WALHI	Jakarta	-	Questionnaire By Email	18 April 2023	-	√
12	AMAN	Jakarta	-	Questionnaire By Email	18 April 2023	-	√

**Appendix 2. Assessment Program**

DATE	02 to 04 May 2023	
PROGRAM	PROCESSES / CLAUSES TO BE AUDITED	AUDITOR
<b>Tuesday, 02 May 2023</b>		
07.05 – 9.30	Flight from Jakarta (CGK) → Medan (KNO)	All Auditor
10.00 – 17.00	Medan (KNO) → Koperasi Konsumen Tebing Tinggi Pangkatan Sejahtera	All Auditor
17.00 – 17.30	<b>Opening Meeting</b> <ul style="list-style-type: none"> <li>Auditee Speech (Introduction of PIC, Profile of Certified Management Unit)</li> <li>Auditor Team Speech (Introduction, Audit Objective, Audit Scope, Audit Plan Discussion, Determine of Audit Sample, Transparency and Confidentiality Clarification)</li> </ul>	All Auditor
<b>Wednesday, 03 May 2023</b>		
08.00 – 12.00	Focus Group Discussion and Field Observation to 10 Smallholders, aspect that being verified: Implementation of Legal Aspect, Agronomy Aspects, Environmental, Conservation and Waste Management Aspects, OHS Aspects and Employment Aspects.	All Auditor
12.00 – 14.00	Break	All Auditor
14.00 – 16.30	Focus Group Discussion and Field Observation to 10 Smallholders, aspect that being verified: Implementation of Legal Aspect, Agronomy Aspects, Environmental, Conservation and Waste Management Aspects, OHS Aspects and Employment Aspects.	All Auditor
16.30 – 17.00	Presentation of Daily Progress	All Auditor
<b>Thursday, 04 May 2023</b>		
08.00 – 12.00	<ul style="list-style-type: none"> <li>Public Consultation with Relevant Agencies and Stakeholders in Labuhanbatu Regency (Surrounding Village and Government Agency).</li> <li>Document review and completing audit checklist.</li> </ul>	All Auditor
12.00 – 14.00	Break	All Auditor
14.00 – 16.30	Internal Auditor Team Discussion	All Auditor
16.30 – 17.00	<b>Closing Meeting:</b> <ul style="list-style-type: none"> <li>Presentation of audit findings (Noteworthy Positive Component, Non Conformities, OFI, Timelie of CAR's, Conclusion)</li> <li>Comments, Responses and Questions</li> </ul>	All Auditor
<b>Friday, 05 May 2023</b>		
06.00 – 11.30	Labuhan Batu – Medan (KNO)	All Auditor
16.50 – 19.15	Medan (KNO) – Jakarta (CGK)	



**Appendix 3. Smallholder Data**

No.	Smallholder Name	Location	Coordinate		Area (Ha)		Actual FFB production (MT/Year)	Yield (MT/Ha/ Year)	Projection FFB Production (MT/Year)	Yield Projection (MT/Ha/ Year)	Date of Joining	Date of Leaving
			Latitude	Latitude	Total Area	Production Area						
Pangkalan Sub District, Labuhanbatu District, Sumatera Utara Province, Indonesia												
1	Abdul Rohim	Tebing Tinggi Village	N 02° 05' 46.12"	E 100° 00' 59.79"	1.00	1.00	18.71	18.71	18.52	18.52	16 May 2021	-
2	Agus Salim	Tebing Tinggi Village	N 02° 04' 53.51"	E 099° 59' 21.55"	0.28	0.28	6.35	22.50	6.29	22.29	16 May 2021	-
		Tebing Tinggi Village	N 02° 04' 57.96"	E 099° 59' 20.40"	0.44	0.44	9.13	20.74	9.04	20.55	16 May 2021	-
3	Misinem	Tebing Tinggi Village	N 02° 05' 23.19"	E 099° 58' 54.44"	2.00	2.00	42.11	21.05	41.73	20.87	16 May 2021	-
4	Darto	Tebing Tinggi Village	N 02° 05' 24.38"	E 099° 59' 22.47"	2.00	2.00	49.95	24.97	49.50	24.75	16 May 2021	-
5	Dimas Tri Suganda	Tebing Tinggi Village	N 02° 04' 55.45"	E 099° 59' 07.21"	0.25	0.25	6.94	28.19	7.13	28.98	16 May 2021	-
6	Dwi Bambang Wahyu Putra	Tebing Tinggi Village	N 02° 05' 09.27"	E 099° 59' 40.88"	3.50	3.50	74.66	21.33	74.05	21.16	16 May 2021	-
		Tebing Tinggi Village	N 02° 05' 12.73"	E 099° 59' 34.26"	1.00	1.00	29.71	29.71	29.54	29.54	16 May 2021	-
		Tebing Tinggi Village	N 02° 04' 36.00"	E 099° 58' 59.64"	1.00	1.00	23.71	23.71	23.59	23.59	16 May 2021	-

No.	Smallholder Name	Location	Coordinate		Area (Ha)		Actual FFB production (MT/Year)	Yield (MT/Ha/Year)	Projection FFB Production (MT/Year)	Yield Projection (MT/Ha/Year)	Date of Joining	Date of Leaving
			Latitude	Latitude	Total Area	Production Area						
		Tebing Tinggi Village	N 02° 04' 43.60"	E 099° 59' 07' 77"	10.00	10.00	230.60	23.06	228.53	22.85	16 May 2021	-
7	Gunawan Sinaga	Tebing Tinggi Village	N 02° 05' 12.75"	E 099° 59' 40.51"	1.00	1.00	23.03	23.03	23.63	23.63	16 May 2021	-
		Tebing Tinggi Village	N 02° 05' 13.28"	E 099° 59' 43.71"	3.00	3.00	61.22	20.41	60.66	20.22	16 May 2021	-
8	Hadi Prayetno	Tebing Tinggi Village	N 02° 05' 41.81"	E 099° 59' 29.70"	1.51	1.51	37.54	24.81	37.24	24.61	16 May 2021	-
9	Hadomuan Ritonga	Tebing Tinggi Village	N 02° 05' 57.56"	E 099° 59' 59.11"	0.79	0.79	17.27	21.92	17.11	21.72	16 May 2021	-
10	Jayanti	Tebing Tinggi Village	N 02° 05' 36.87"	E 099° 59' 33.46"	1.53	1.53	23.32	15.20	23.10	15.06	16 May 2021	-
11	Lahfuddin	Tebing Tinggi Village	N 02° 06' 40.39"	E 100° 00' 03.08"	1.01	1.01	20.16	20.04	19.98	19.86	16 May 2021	-
		Tebing Tinggi Village	N 02° 04' 51.12"	E 099° 58' 45.10"	0.80	0.80	9.50	11.87	9.40	11.75	16 May 2021	-
12	Laili Fitriani	Tebing Tinggi Village	N 02° 04' 21.87"	E 099° 58' 57.38"	2.00	2.00	50.26	25.13	49.83	24.91	16 May 2021	-
13	Mesniati	Tebing Tinggi Village	N 02° 04' 28.23"	E 099° 58' 59.83"	0.76	0.76	14.71	19.23	14.57	19.05	16 May 2021	-

No.	Smallholder Name	Location	Coordinate		Area (Ha)		Actual FFB production (MT/Year)	Yield (MT/Ha/Year)	Projection FFB Production (MT/Year)	Yield Projection (MT/Ha/Year)	Date of Joining	Date of Leaving
			Latitude	Latitude	Total Area	Production Area						
14	Muhajirin Siregar	Tebing Tinggi Village	N 02° 04' 15.53"	E 099° 59' 10.44"	1.26	1.26	28.14	22.31	27.90	22.12	16 May 2021	-
15	Nursiam	Tebing Tinggi Village	N 02° 04' 20.26"	E 099° 59' 26.04"	1.00	1.00	16.44	16.44	16.27	16.27	16 May 2021	-
16	Nuzul ramadani	Tebing Tinggi Village	N 02° 04' 22.30"	E 09° 59' 11.92"	0.68	0.68	16.24	23.76	16.15	23.64	16 May 2021	-
17	Rosma	Tebing Tinggi Village	N 02° 04' 53.44"	E 099° 59' 30.33"	0.87	0.87	25.89	29.79	25.90	29.81	16 May 2021	-
18	Siti Dorkas Lubis	Tebing Tinggi Village	N 02° 04' 56.91'	E 099° 59' 12.95"	0.48	0.48	13.03	27.37	13.63	28.63	16 May 2021	-
19	Sugi	Tebing Tinggi Village	N 02° 04' 50.08"	E 099° 59' 11.98"	3.19	3.19	74.50	23.34	73.82	23.13	16 May 2021	-
		Tebing Tinggi Village	N 02° 04' 45.94"	E 099° 59' 09.09"	4.00	4.00	87.87	21.97	87.07	21.77	16 May 2021	-
20	Sugito	Tebing Tinggi Village	N 02° 04' 36.28"	E 099° 59' 35.13"	2.00	2.00	31.43	15.72	31.14	15.57	16 May 2021	-
21	Sutrisno	Tebing Tinggi Village	N 02° 04' 29.99"	E 099° 59' 14.11"	0.45	0.45	11.13	24.53	11.04	24.35	16 May 2021	-
22	Suyanti	Tebing Tinggi Village	N 02° 04' 42.42"	E 099° 58' 54.75"	0.33	0.33	7.49	22.37	7.42	22.18	16 May 2021	-

No.	Smallholder Name	Location	Coordinate		Area (Ha)		Actual FFB production (MT/Year)	Yield (MT/Ha/Year)	Projection FFB Production (MT/Year)	Yield Projection (MT/Ha/Year)	Date of Joining	Date of Leaving
			Latitude	Latitude	Total Area	Production Area						
		Tebing Tinggi Village	N 02° 04' 43.00"	E 099° 58' 57.35"	1.49	1.49	26.91	18.01	26.62	17.82	16 May 2021	-
23	Trisna	Tebing Tinggi Village	N 02° 05' 55.02"	E 099° 59' 21.66"	0.50	0.50	14.23	28.50	14.83	29.71	16 May 2021	-
24	Tulus	Tebing Tinggi Village	N 02° 05' 51.90"	E 100° 00' 01.92"	2.50	2.50	36.54	14.62	36.21	14.48	16 May 2021	-
25	Umar Sidik	Tebing Tinggi Village	N 02° 04' 28.18"	E 099° 59' 10.76"	0.68	0.68	13.54	19.81	14.14	20.69	16 May 2021	-
26	Wahyu Akbar	Tebing Tinggi Village	N 02° 04' 19.16"	E 099° 58' 54.75"	0.68	0.68	17.45	25.53	17.34	25.37	16 May 2021	-
27	Attia Muchtar Maulana	Tebing Tinggi Village	N 02° 05' 36.53"	E 099° 59' 41.21"	1.54	1.54	31.42	20.41	31.06	20.17	16 May 2021	-
28	Dedi erliansyah	Tebing Tinggi Village	N 02° 05' 59.14"	E 099° 58' 35.83"	0.82	0.82	17.49	17.68	17.30	17.48	16 May 2021	-
		Tebing Tinggi Village	N 02° 05' 02.97"	E 099° 58' 42.07"	0.99	0.99	38.30	19.52	37.87	19.30	16 May 2021	-
		Tebing Tinggi Village	N 02° 05' 18.75"	E 099° 59' 08.37"	1.96	1.96	20.17	24.66	20.77	25.39	16 May 2021	-
		Tebing Tinggi Village	N 02° 05' 24.16"	E 099° 59' 02.26"	1.14	1.14	23.19	20.34	22.93	20.11	16 May 2021	-

No.	Smallholder Name	Location	Coordinate		Area (Ha)		Actual FFB production (MT/Year)	Yield (MT/Ha/Year)	Projection FFB Production (MT/Year)	Yield Projection (MT/Ha/Year)	Date of Joining	Date of Leaving
			Latitude	Latitude	Total Area	Production Area						
		Tebing Tinggi Village	N 02° 06' 48.94"	E 100° 00' 16.34"	1.37	1.37	38.00	27.83	37.58	27.51	16 May 2021	-
29	Dedi Irwansyah	Tebing Tinggi Village	N 02° 04' 41.46"	E 099° 58' 34.71"	0.76	0.76	14.01	18.43	13.85	18.22	16 May 2021	-
		Tebing Tinggi Village	N 02° 04' 09.59"	E 099° 58' 41.72"	0.84	0.84	13.90	16.59	13.74	16.40	16 May 2021	-
30	Edi Preyetno	Tebing Tinggi Village	N 02° 06' 12.18"	E 099° 59' 10.81"	0.22	0.22	3.94	17.84	3.90	17.64	16 May 2021	-
31	Edi susanto	Tebing Tinggi Village	N 02° 05' 14.59"	E 099° 59' 14.59"	1.00	1.00	28.63	17.89	28.31	17.69	16 May 2021	-
		Tebing Tinggi Village	N 02° 04' 97.71"	E 099° 58' 46.58"	3.50	3.50	36.02	18.01	35.62	17.81	16 May 2021	-
		Tebing Tinggi Village	N 02° 04' 51.47"	E 099° 58' 02.21"	1.00	1.00	44.26	22.13	43.76	21.88	16 May 2021	-
		Tebing Tinggi Village	N 02° 04' 51.13"	E 099° 58' 47.66"	2.00	2.00	68.43	27.37	67.66	27.07	16 May 2021	-
		Tebing Tinggi Village	N 02° 04' 53.31"	E 099° 58' 48.95"	2.00	2.00	26.71	26.71	26.41	26.41	16 May 2021	-
		Tebing Tinggi Village	N 02° 04' 47.63"	E 099° 58' 53.49"	2.50	2.50	69.87	19.96	69.08	19.74	16 May 2021	-

No.	Smallholder Name	Location	Coordinate		Area (Ha)		Actual FFB production (MT/Year)	Yield (MT/Ha/Year)	Projection FFB Production (MT/Year)	Yield Projection (MT/Ha/Year)	Date of Joining	Date of Leaving
			Latitude	Latitude	Total Area	Production Area						
		Tebing Tinggi Village	N 02° 05' 26.69"	E 099° 59' 08.17"	1.60	1.60	17.32	17.32	17.12	17.12	16 May 2021	-
32	Eka Ningsih hasibuan	Tebing Tinggi Village	N 02° 05' 59.29"	E 099° 59' 35.68"	1.47	1.47	26.68	18.18	26.38	17.98	16 May 2021	-
33	Ernawati Sitorus Pane	Tebing Tinggi Village	N 02° 04' 51.27"	E 099° 58' 42.26"	1.00	1.00	20.24	20.28	20.84	20.88	16 May 2021	-
		Tebing Tinggi Village	N 02° 04' 48.91"	E 099° 58' 38.68"	0.16	0.16	4.74	29.16	4.87	29.95	16 May 2021	-
34	Hamdan	Tebing Tinggi Village	N 02° 05' 38.49"	E 099° 58' 55.01"	1.32	1.32	10.28	14.69	10.17	14.52	16 May 2021	-
		Tebing Tinggi Village	N 02° 05' 38.85"	E 099° 58' 54.58"	0.70	0.70	19.87	15.05	19.64	14.88	16 May 2021	-
35	Ida Eliawati	Tebing Tinggi Village	N 02° 05' 11.02"	E 099° 59' 05.36"	0.62	0.62	37.58	18.94	37.16	18.73	16 May 2021	-
		Tebing Tinggi Village	N 02° 05' 08.06"	E 099° 59' 09.68"	1.98	1.98	9.89	15.89	9.78	15.72	16 May 2021	-
36	Ratna Juwita Rambe	Tebing Tinggi Village	N 02° 06' 21.40"	E 100° 02' 59.36"	4.00	4.00	29.91	22.14	29.58	21.89	16 May 2021	-
		Tebing Tinggi Village	N 02° 04' 42.70"	E 099° 58' 50.39"	0.83	0.83	7.33	14.40	7.25	14.24	16 May 2021	-

No.	Smallholder Name	Location	Coordinate		Area (Ha)		Actual FFB production (MT/Year)	Yield (MT/Ha/Year)	Projection FFB Production (MT/Year)	Yield Projection (MT/Ha/Year)	Date of Joining	Date of Leaving
			Latitude	Latitude	Total Area	Production Area						
		Tebing Tinggi Village	N 02° 04' 33.79"	E 099° 59' 03.35"	4.38	4.38	14.56	17.54	14.40	17.34	16 May 2021	-
		Tebing Tinggi Village	N 02° 04' 45.36"	E 099° 58' 52.13"	1.35	1.35	82.41	18.81	81.49	18.60	16 May 2021	-
		Tebing Tinggi Village	N 02° 04' 45.32"	E 099° 58' 51.88"	0.51	0.51	24.14	18.46	23.87	18.25	16 May 2021	-
		Tebing Tinggi Village	N 02° 04' 32.97"	E 099° 59' 03.21"	1.31	1.31	4.93	16.46	4.88	16.28	16 May 2021	-
		Tebing Tinggi Village	N 02° 04' 43.95"	E 099° 58' 55.25"	0.30	0.30	23.01	22.84	22.75	22.58	16 May 2021	-
		Tebing Tinggi Village	N 02° 04' 41.21"	E 099° 58' 49.71"	1.01	1.01	4.31	22.11	4.26	21.87	16 May 2021	-
		Tebing Tinggi Village	N 02° 04' 36.06"	E 099° 58' 50.73"	0.19	0.19	83.00	20.75	82.07	20.52	16 May 2021	-
37	Khairuddin	Tebing Tinggi Village	N 02° 06' 10.54"	E 099° 59' 49.73"	1.44	1.44	22.98	19.15	22.73	18.94	16 May 2021	-
		Tebing Tinggi Village	N 02° 06' 09.73"	E 099° 59' 32.84"	3.00	3.00	10.27	13.52	10.16	13.37	16 May 2021	-
		Tebing Tinggi Village	N 02° 06' 10.75"	E 099° 59' 41.05"	3.00	3.00	68.77	22.92	68.00	22.67	16 May 2021	-



No.	Smallholder Name	Location	Coordinate		Area (Ha)		Actual FFB production (MT/Year)	Yield (MT/Ha/Year)	Projection FFB Production (MT/Year)	Yield Projection (MT/Ha/Year)	Date of Joining	Date of Leaving
			Latitude	Latitude	Total Area	Production Area						
		Tebing Tinggi Village	N 02° 04' 16.34"	E 099° 58' 36.15"	1.20	1.20	55.37	18.46	54.75	18.25	16 May 2021	-
		Tebing Tinggi Village	N 02° 04' 22.50"	E 099° 58' 39.32"	0.76	0.76	31.25	21.70	30.90	21.46	16 May 2021	-
38	Matla al Fajri	Tebing Tinggi Village	N 02° 04' 55.73"	E 099° 59' 30.99"	1.74	1.74	32.50	18.70	32.14	18.49	16 May 2021	-
39	Muhammad Riadi	Tebing Tinggi Village	N 02° 06' 33.78"	E 099° 59' 33.28"	1.82	1.82	44.97	22.39	44.46	22.14	16 May 2021	-
		Tebing Tinggi Village	N 02° 06' 33.92"	E 099° 59' 37.01"	2.01	2.01	35.65	19.57	35.25	19.35	16 May 2021	-
40	Fahrul Husen Rambe	Tebing Tinggi Village	N 02° 06' 41.53"	E 100° 00' 07.30"	1.98	1.98	38.83	19.57	38.39	19.35	16 May 2021	-
41	Riadin	Tebing Tinggi Village	N 02° 06' 40.96"	E 099° 59' 58.62"	1.13	1.13	24.31	21.53	24.03	21.29	16 May 2021	-
42	Sa'adah hasibuan	Tebing Tinggi Village	N 02° 06' 44.50"	E 100° 00' 00.65"	2.00	2.00	30.55	15.27	30.20	15.10	16 May 2021	-
		Tebing Tinggi Village	N 02° 04' 19.44"	E 099° 59' 04.04"	1.22	1.22	25.65	20.99	25.36	20.76	16 May 2021	-
43	Salman Ritonga	Tebing Tinggi Village	N 02° 04' 54.89"	E 099° 59' 49.84"	15.00	15.00	335.64	22.38	331.88	22.13	16 May 2021	-

No.	Smallholder Name	Location	Coordinate		Area (Ha)		Actual FFB production (MT/Year)	Yield (MT/Ha/Year)	Projection FFB Production (MT/Year)	Yield Projection (MT/Ha/Year)	Date of Joining	Date of Leaving
			Latitude	Latitude	Total Area	Production Area						
44	Saru	Tebing Tinggi Village	N 02° 04' 05.64"	E 099° 58' 43.53"	0.60	0.60	5.80	9.67	5.74	9.56	16 May 2021	-
		Tebing Tinggi Village	N 02° 06' 40.96"	E 099° 59' 58.62"	1.60	1.60	22.01	13.76	21.76	13.60	16 May 2021	-
45	Sulaiman S	Tebing Tinggi Village	N 02° 06' 10.03"	E 100° 00' 08.59"	1.66	1.66	34.35	20.74	33.97	20.51	16 May 2021	-
46	Supomo	Tebing Tinggi Village	N 02° 04' 44.34"	E 099° 58' 37.36"	1.35	1.35	11.14	22.28	11.02	22.03	16 May 2021	-
		Tebing Tinggi Village	N 02° 04' 47.86"	E 099° 58' 36.88"	0.50	0.50	26.64	19.67	26.34	19.45	16 May 2021	-
47	Sutikno	Tebing Tinggi Village	N 02° 04' 41.46"	E 099° 58' 34.71"	0.72	0.72	10.37	14.40	10.25	14.24	16 May 2021	-
48	Suwanto	Tebing Tinggi Village	N 02° 04' 24.47"	E 099° 58' 47.44"	0.32	0.32	5.30	16.56	5.24	16.37	16 May 2021	-
49	Syafuruddin Nasution	Tebing Tinggi Village	N 02° 04' 29.24"	E 099° 58' 33.76"	0.36	0.36	8.67	24.08	9.27	25.75	16 May 2021	-
50	Taufik Hasibuan	Tebing Tinggi Village	N 02° 06' 02.17"	E 099° 59' 39.63"	1.76	1.76	27.23	15.43	26.92	15.26	16 May 2021	-
		Tebing Tinggi Village	N 02° 05' 56.42"	E 099° 59' 46.85"	1.60	1.60	31.19	21.70	30.84	21.46	16 May 2021	-

No.	Smallholder Name	Location	Coordinate		Area (Ha)		Actual FFB production (MT/Year)	Yield (MT/Ha/Year)	Projection FFB Production (MT/Year)	Yield Projection (MT/Ha/Year)	Date of Joining	Date of Leaving
			Latitude	Latitude	Total Area	Production Area						
		Tebing Tinggi Village	N 02° 05' 53.78"	E 099° 59' 46.41"	1.66	1.66	45.80	27.64	45.27	27.32	16 May 2021	-
		Tebing Tinggi Village	N 02° 05' 53.78"	E 099° 59' 46.41"	1.44	1.44	29.97	18.73	29.63	18.52	16 May 2021	-
51	Tukimin	Tebing Tinggi Village	N 02° 04' 33.48"	E 099° 58' 46.08"	0.84	0.84	3.13	3.71	3.10	3.67	16 May 2021	-
52	Zuliahasanah	Tebing Tinggi Village	N 02° 02' 46.21"	E 100° 00' 18.20"	1.95	1.95	43.85	22.49	43.36	22.24	16 May 2021	-
53	Zulkifli	Tebing Tinggi Village	N 02° 05' 44.53"	E 099° 59' 44.68"	1.09	1.09	9.15	13.47	9.04	13.32	16 May 2021	-
		Tebing Tinggi Village	N 02° 06' 23.44"	E 099° 59' 43.36"	0.68	0.68	16.53	15.17	16.35	15.00	16 May 2021	-
54	Abdul hamid rangkuti	Tebing Tinggi Village	N 02° 05' 25.17"	E 099° 59' 20.15"	1.20	1.20	25.78	21.49	25.74	21.45	16 May 2021	-
55	Abdul Kodir Panjaitan	Tebing Tinggi Village	N 02° 06' 31.74"	E 099° 59' 14.58"	0.40	0.40	8.88	22.20	8.86	22.15	16 May 2021	-
56	Abdullah Umar Nasution	Tebing Tinggi Village	N 02° 06' 07.99"	E 100° 00' 39.28"	0.49	0.49	11.60	23.44	11.58	23.40	16 May 2021	-
57	Adha Imawan.N	Tebing Tinggi Village	N 02° 05' 23.92"	E 099° 59' 23.92"	3.50	3.50	85.27	24.36	85.11	24.32	16 May 2021	-

No.	Smallholder Name	Location	Coordinate		Area (Ha)		Actual FFB production (MT/Year)	Yield (MT/Ha/Year)	Projection FFB Production (MT/Year)	Yield Projection (MT/Ha/Year)	Date of Joining	Date of Leaving
			Latitude	Latitude	Total Area	Production Area						
58	Ahmad Zaini	Tebing Tinggi Village	N 02° 05' 00.20"	E 099° 59' 03.14"	1.18	1.18	26.48	22.38	26.42	22.34	16 May 2021	-
59	Aidil Aman Dalimunthe	Tebing Tinggi Village	N 02° 06' 19.09"	E 100° 00' 06.39"	1.15	1.15	41.04	20.27	40.96	20.23	16 May 2021	-
		Tebing Tinggi Village	N 02° 05' 16.05"	E 099° 59' 21.42"	1.76	1.76	16.23	14.17	16.19	14.14	16 May 2021	-
		Tebing Tinggi Village	N 02° 06' 54.79"	E 099° 59' 13.84"	1.31	1.31	45.89	22.66	45.80	22.62	16 May 2021	-
		Tebing Tinggi Village	N 02° 04' 59.42"	E 099° 59' 45.23"	2.02	2.02	25.56	19.54	25.51	19.50	16 May 2021	-
		Tebing Tinggi Village	N 02° 06' 37.09"	E 099° 59' 28.52"	2.02	2.02	31.23	17.71	31.17	17.67	16 May 2021	-
60	Aladin Simarmata	Tebing Tinggi Village	N 02° 06' 16.24"	E 100° 00' 13.59"	1.94	1.94	92.19	21.07	92.01	21.03	16 May 2021	-
		Tebing Tinggi Village	N 02° 04' 40.13"	E 099° 58' 43.15"	1.55	1.55	0.58	0.38	0.60	0.39	16 May 2021	-
		Tebing Tinggi Village	N 02° 06' 39.85"	E 100° 00' 33.05"	4.37	4.37	44.94	23.13	44.85	23.08	16 May 2021	-
61	Amelia Arfaini	Tebing Tinggi Village	N 02° 05' 15.80"	E 099° 59' 06.75"	0.71	0.71	10.16	14.41	10.14	14.38	16 May 2021	-

No.	Smallholder Name	Location	Coordinate		Area (Ha)		Actual FFB production (MT/Year)	Yield (MT/Ha/Year)	Projection FFB Production (MT/Year)	Yield Projection (MT/Ha/Year)	Date of Joining	Date of Leaving
			Latitude	Latitude	Total Area	Production Area						
62	Ahmad Amri Marpaung	Tebing Tinggi Village	N 02° 06' 17.30"	E 100° 00' 03.19 "	0.41	0.41	7.76	19.12	7.75	19.08	16 May 2021	-
63	Askad Siregar	Tebing Tinggi Village	N 02° 06' 19.09"	E 100° 00' 06.39"	2.44	2.44	49.02	20.08	48.93	20.04	16 May 2021	-
64	Asni	Tebing Tinggi Village	N 02° 05' 57.97"	E 099° 59' 24.62"	0.50	0.50	9.39	18.78	9.37	18.75	16 May 2021	-
65	Tiara Dame Sidabutar	Tebing Tinggi Village	N 02° 05' 43.40"	E 099° 58' 58.15"	3.50	3.50	66.03	18.86	65.90	18.83	16 May 2021	-
66	Dasuki Nst	Tebing Tinggi Village	N 02° 06' 26.62"	E 099° 59' 14.67"	0.89	0.89	13.48	15.12	13.45	15.09	16 May 2021	-
		Tebing Tinggi Village	N 02° 02' 49.48"	E 100° 00' 11.99"	2.00	2.00	38.45	19.22	38.38	19.19	16 May 2021	-
67	Daud Rasidi	Tebing Tinggi Village	N 02° 05' 42.01"	E 099° 59' 23.42"	1.00	1.00	19.61	19.61	19.58	19.58	16 May 2021	-
68	Edi Wijaya	Tebing Tinggi Village	N 02° 05' 51.90"	E 100° 00' 01.92"	2.12	2.12	34.94	16.48	34.87	16.45	16 May 2021	-
69	Harapan	Tebing Tinggi Village	N 02° 04' 25.55"	E 099° 58' 33.06"	0.50	0.50	10.99	21.99	10.97	21.94	16 May 2021	-
70	Harmaini Ritonga	Tebing Tinggi Village	N 02° 05' 17.70"	E 099° 59' 19.18"	1.76	1.76	32.43	18.41	32.37	18.37	16 May 2021	-

No.	Smallholder Name	Location	Coordinate		Area (Ha)		Actual FFB production (MT/Year)	Yield (MT/Ha/Year)	Projection FFB Production (MT/Year)	Yield Projection (MT/Ha/Year)	Date of Joining	Date of Leaving
			Latitude	Latitude	Total Area	Production Area						
		Tebing Tinggi Village	N 02° 05' 49.10"	E 100° 00' 00.53"	0.86	0.86	15.95	18.58	16.55	19.28	16 May 2021	-
71	Dewi Nirwana	Tebing Tinggi Village	N 02° 04' 25.55"	E 099° 58' 33.06"	1.00	1.00	26.17	26.17	26.12	26.12	16 May 2021	-
72	Husni mubarak Dalimunthe	Tebing Tinggi Village	N 02° 02' 56.50"	E 100° 00' 12.15"	2.00	2.00	36.19	18.10	36.12	18.06	16 May 2021	-
		Tebing Tinggi Village	N 02° 05' 12.10"	E 099° 59' 29.01"	5.84	5.84	110.53	18.91	110.31	18.88	16 May 2021	-
73	lin umaroh	Tebing Tinggi Village	N 02° 05' 24.49"	E 099° 59' 00.51"	1.04	1.04	3.53	12.79	3.52	12.77	16 May 2021	-
		Tebing Tinggi Village	N 02° 05' 23.05"	E 099° 59' 38.55"	0.28	0.28	17.95	17.31	17.92	17.28	16 May 2021	-
74	Ilham Ramadhan	Tebing Tinggi Village	N 02° 04' 38.54"	E 099° 58' 27.50"	0.48	0.48	8.19	16.90	8.17	16.87	16 May 2021	-
75	Nurafni	Tebing Tinggi Village	N 02° 05' 19.46"	E 099° 59' 01.77"	0.24	0.24	5.53	23.02	5.52	22.98	16 May 2021	-
76	Kamaluddin	Tebing Tinggi Village	N 02° 05' 47.54"	E 100° 00' 06.61"	1.00	1.00	18.65	18.65	18.61	18.61	16 May 2021	-
77	Kaslan	Tebing Tinggi Village	N 02° 05' 23.70"	E 099° 59' 01.02"	1.12	1.12	30.06	26.84	30.01	26.79	16 May 2021	-

No.	Smallholder Name	Location	Coordinate		Area (Ha)		Actual FFB production (MT/Year)	Yield (MT/Ha/Year)	Projection FFB Production (MT/Year)	Yield Projection (MT/Ha/Year)	Date of Joining	Date of Leaving
			Latitude	Latitude	Total Area	Production Area						
78	Khairul Anam	Tebing Tinggi Village	N 02° 02' 49.86"	E 100° 100' 25.11"	2.00	2.00	43.21	21.60	43.12	21.56	16 May 2021	-
		Tebing Tinggi Village	N 02° 04' 58.74"	E 099° 59' 15.16"	5.80	5.80	130.03	22.41	129.78	22.37	16 May 2021	-
79	Khairul Ritonga	Tebing Tinggi Village	N 02° 04' 32.81"	E 099° 58' 26.32"	0.44	0.44	11.04	25.03	11.64	26.39	16 May 2021	-
80	khajanatul abadijah	Tebing Tinggi Village	N 02° 04' 07.00"	E 099° 59' 00.87"	0.66	0.66	31.46	22.10	31.40	22.06	16 May 2021	-
		Tebing Tinggi Village	N 02° 05' 41.00"	E 099° 58' 56.88"	1.42	1.42	19.01	28.88	18.97	28.82	16 May 2021	-
81	Kus Hendratno	Tebing Tinggi Village	N 02° 05' 17.92"	E 099° 59' 09.70"	0.62	0.62	13.45	21.66	13.42	21.62	16 May 2021	-
82	Lahmuddin Dalimunthe	Tebing Tinggi Village	N 02° 06' 25.71"	E 100° 00' 12.29"	1.98	1.98	41.13	20.79	41.05	20.74	16 May 2021	-
83	M.Ikhsan Ritonga	Tebing Tinggi Village	N 02° 05' 81.12"	E 099° 59' 05.91"	0.28	0.28	6.13	21.91	6.12	21.87	16 May 2021	-
		Tebing Tinggi Village	N 02° 04' 52.69"	E 099° 59' 25.20"	2.04	2.04	47.40	23.20	47.30	23.15	16 May 2021	-
84	M.Ridwan Ritonga	Tebing Tinggi Village	N 02° 05' 15.65"	E 099° 59' 14.26"	0.21	0.21	3.84	18.30	3.84	18.27	16 May 2021	-



No.	Smallholder Name	Location	Coordinate		Area (Ha)		Actual FFB production (MT/Year)	Yield (MT/Ha/Year)	Projection FFB Production (MT/Year)	Yield Projection (MT/Ha/Year)	Date of Joining	Date of Leaving
			Latitude	Latitude	Total Area	Production Area						
		Tebing Tinggi Village	N 02° 05' 21.95"	E 099° 59' 06.83"	1.50	1.50	23.54	15.69	23.49	15.66	16 May 2021	-
85	Mardiani Nst	Tebing Tinggi Village	N 02° 06' 55.15"	E 100° 00' 28.40"	1.92	1.92	41.90	21.82	42.50	22.13	16 May 2021	-
86	M. Alwi Siregar	Tebing Tinggi Village	N 02° 06' 49.13"	E 100° 00' 30.75"	1.50	1.50	34.61	23.08	34.55	23.03	16 May 2021	-
87	Mhd.Zuhri Hasibuan	Tebing Tinggi Village	N 02° 06' 33.94"	E 099° 59' 23.08"	2.00	2.00	33.22	16.61	33.15	16.58	16 May 2021	-
88	Muhammad Imam Arifin	Tebing Tinggi Village	N 02° 02' 56.23"	E 100° 00' 28.54"	1.12	1.12	18.71	16.71	18.68	16.68	16 May 2021	-
89	Nurdin Ritonga	Tebing Tinggi Village	N 02° 04' 53.40"	E 099° 59' 29.67"	1.00	1.00	20.80	20.80	20.76	20.76	16 May 2021	-
90	Nurlina Siregar	Tebing Tinggi Village	N 02° 05' 48.56"	E 099° 59' 03.29"	0.59	0.59	8.30	14.12	8.29	14.09	16 May 2021	-
91	Parida Rambe	Tebing Tinggi Village	N 02° 05' 19.50"	E 099° 59' 21.51"	1.00	1.00	20.52	20.52	20.48	20.48	16 May 2021	-
92	Rismah.	Tebing Tinggi Village	N 02° 05' 42.14"	E 099° 59' 33.25"	1.00	1.00	21.49	21.49	21.45	21.45	16 May 2021	-
93	Rohimah	Tebing Tinggi Village	N 02° 06' 21.15"	E 100° 00' 21.15"	0.63	0.63	11.82	18.63	11.80	18.60	16 May 2021	-

No.	Smallholder Name	Location	Coordinate		Area (Ha)		Actual FFB production (MT/Year)	Yield (MT/Ha/Year)	Projection FFB Production (MT/Year)	Yield Projection (MT/Ha/Year)	Date of Joining	Date of Leaving
			Latitude	Latitude	Total Area	Production Area						
		Tebing Tinggi Village	N 02° 06' 25.34"	E 099° 59' 44.10"	1.36	1.36	23.63	17.41	23.58	17.38	16 May 2021	-
94	Romaui br.manik	Tebing Tinggi Village	N 02° 05' 57.62"	E 099° 59' 12.47"	1.31	1.31	27.94	21.41	27.88	21.37	16 May 2021	-
		Tebing Tinggi Village	N 02° 05' 33.48"	E 099° 59' 07.14"	0.60	0.60	128.75	21.46	128.51	21.42	16 May 2021	-
		Tebing Tinggi Village	N 02° 05' 37.55"	E 099° 58' 58.93"	2.00	2.00	115.53	23.11	115.31	23.06	16 May 2021	-
		Tebing Tinggi Village	N 02° 06' 19.24"	E 100° 00' 04.32"	1.38	1.38	11.27	18.78	11.25	18.74	16 May 2021	-
		Tebing Tinggi Village	N 02° 06' 35.24"	E 099° 59' 17.30"	1.25	1.25	44.72	22.37	44.64	22.32	16 May 2021	-
		Tebing Tinggi Village	N 02° 06' 33.69"	E 099° 59' 16.28"	5.00	5.00	33.85	24.51	33.78	24.46	16 May 2021	-
		Tebing Tinggi Village	N 02° 05' 54.82"	E 099° 59' 09.43"	6.00	6.00	25.91	20.74	25.86	20.70	16 May 2021	-
95	Roslaini Pulungan	Tebing Tinggi Village	N 02° 05' 23.92"	E 099° 59' 15.22"	0.16	0.16	3.50	21.90	4.10	25.65	16 May 2021	-
		Tebing Tinggi Village	N 02° 05' 49.21"	E 099° 58' 54.17"	1.18	1.18	23.50	19.86	23.46	19.82	16 May 2021	-

No.	Smallholder Name	Location	Coordinate		Area (Ha)		Actual FFB production (MT/Year)	Yield (MT/Ha/Year)	Projection FFB Production (MT/Year)	Yield Projection (MT/Ha/Year)	Date of Joining	Date of Leaving
			Latitude	Latitude	Total Area	Production Area						
96	Saiful Ahyar Siregar	Tebing Tinggi Village	N 02° 06' 53.46"	E 100° 00' 28.04"	1.90	1.90	52.55	27.63	52.45	27.57	16 May 2021	-
97	Salwan Harianto	Tebing Tinggi Village	N 02° 05' 16.92"	E 099° 59' 12.04"	0.85	0.85	18.01	21.11	17.98	21.07	16 May 2021	-
98	Siti Aisah	Tebing Tinggi Village	N 02° 05' 08.05"	E 099° 59' 09.00"	1.87	1.87	40.65	20.66	41.25	20.97	16 May 2021	-
		Tebing Tinggi Village	N 02° 05' 08.05"	E 099° 59' 09.00"	1.97	1.97	29.80	15.90	29.74	15.87	16 May 2021	-
99	Siti Aminah	Tebing Tinggi Village	N 02° 06' 35.17"	E 099° 59' 26.24"	1.65	1.65	45.08	27.40	44.99	27.35	16 May 2021	-
100	Siti Hafsa Silalahi	Tebing Tinggi Village	N 02° 04' 44.54"	E 099° 58' 37.64"	0.82	0.82	11.02	13.44	11.00	13.41	16 May 2021	-
		Tebing Tinggi Village	N 02° 04' 43.22"	E 099° 58' 34.22"	0.66	0.66	9.40	14.16	9.38	14.13	16 May 2021	-
		Tebing Tinggi Village	N 02° 04' 47.57"	E 099° 58' 36.94"	0.63	0.63	6.68	10.66	6.67	10.64	16 May 2021	-
101	Siti raihan	Tebing Tinggi Village	N 02° 05' 52.46"	E 099° 59' 02.76"	0.48	0.48	13.61	28.65	13.59	28.59	16 May 2021	-
102	Sri Linda Wati	Tebing Tinggi Village	N 02° 05' 15.65"	E 099° 59' 14.26"	1.59	1.59	31.24	19.63	31.19	19.59	16 May 2021	-

No.	Smallholder Name	Location	Coordinate		Area (Ha)		Actual FFB production (MT/Year)	Yield (MT/Ha/Year)	Projection FFB Production (MT/Year)	Yield Projection (MT/Ha/Year)	Date of Joining	Date of Leaving
			Latitude	Latitude	Total Area	Production Area						
103	Susilawati	Tebing Tinggi Village	N 02° 05' 12.01"	E 099° 59' 00.70"	1.01	1.01	23.99	23.79	23.94	23.74	16 May 2021	-
		Tebing Tinggi Village	N 02° 05' 12.90"	E 099° 59' 26.33"	4.30	4.30	79.79	18.55	79.63	18.52	16 May 2021	-
104	Yusri	Tebing Tinggi Village	N 02° 05' 53.96"	E 099° 59' 47.77"	0.74	0.74	11.63	15.65	11.61	15.62	16 May 2021	-
		Tebing Tinggi Village	N 02° 05' 21.93"	E 099° 59' 02.48"	0.89	0.89	6.67	7.53	6.66	7.51	16 May 2021	-
105	zul amri dalimunthe	Tebing Tinggi Village	N 02° 06' 09.72"	E 099° 59' 43.01"	0.37	0.37	20.74	19.10	20.70	19.06	16 May 2021	-
		Tebing Tinggi Village	N 02° 05' 24.21"	E 099° 59' 07.19"	1.09	1.09	6.86	18.61	6.85	18.57	16 May 2021	-
106	Zulfikar Lukman	Tebing Tinggi Village	N 02° 06' 35.72"	E 099° 59' 18.13"	0.72	0.72	21.16	29.40	21.12	29.34	16 May 2021	-
		Tebing Tinggi Village	N 02° 06' 06.73"	E 100° 00' 39.27"	1.00	1.00	20.66	20.66	20.62	20.62	16 May 2021	-
107	sugito	Tebing Tinggi Village	N 02° 05' 42.71"	E 099° 59' 03.05"	2.24	2.24	32.71	14.60	47.17	21.06	16 May 2021	-
108	Abdul Gafar	Tebing Tinggi Village	N 02° 06' 49.29"	E 100° 00' 02.42"	2.50	2.50	62.59	25.04	62.21	24.88	16 May 2021	-

No.	Smallholder Name	Location	Coordinate		Area (Ha)		Actual FFB production (MT/Year)	Yield (MT/Ha/Year)	Projection FFB Production (MT/Year)	Yield Projection (MT/Ha/Year)	Date of Joining	Date of Leaving
			Latitude	Latitude	Total Area	Production Area						
		Tebing Tinggi Village	N 02° 05' 59.37"	E 099° 59' 44.93"	2.70	2.70	57.26	21.21	56.95	21.09	16 May 2021	-
		Tebing Tinggi Village	N 02° 06' 04.66"	E 099° 59' 51.90"	3.50	3.50	72.75	20.79	72.35	20.67	16 May 2021	-
		Tebing Tinggi Village	N 02° 06' 01.67"	E 099° 59' 51.90"	0.70	0.70	13.62	19.46	13.55	19.35	16 May 2021	-
		Tebing Tinggi Village	N 02° 06' 02.38"	E 099° 59' 39.66"	2.00	2.00	39.61	19.86	39.39	19.75	16 May 2021	-
		Tebing Tinggi Village	N 02° 05' 20.64"	E 099° 59' 37.53"	4.05	4.05	89.10	22.00	88.61	21.88	16 May 2021	-
		Tebing Tinggi Village	N 02° 05' 46.85"	E 099° 59' 30.53"	2.00	2.00	41.54	20.77	41.31	20.66	16 May 2021	-
109	Abdul Halim Hasibuan	Tebing Tinggi Village	N 02° 05' 01.90"	E 099° 58' 45.96"	3.00	3.00	66.17	22.06	65.81	21.94	16 May 2021	-
		Tebing Tinggi Village	N 02° 05' 02.97"	E 099° 58' 42.07"	2.50	2.50	52.98	21.19	52.69	21.08	16 May 2021	-
		Tebing Tinggi Village	N 02° 06' 17.33"	E 099° 59' 54.20"	1.59	1.59	27.56	17.35	27.41	17.26	16 May 2021	-
		Tebing Tinggi Village	N 02° 04' 43.05"	E 099° 58' 43.82"	1.48	1.48	22.22	14.97	22.10	14.89	16 May 2021	-

No.	Smallholder Name	Location	Coordinate		Area (Ha)		Actual FFB production (MT/Year)	Yield (MT/Ha/Year)	Projection FFB Production (MT/Year)	Yield Projection (MT/Ha/Year)	Date of Joining	Date of Leaving
			Latitude	Latitude	Total Area	Production Area						
		Tebing Tinggi Village	N 02° 05' 35.69"	E 099° 59' 11.99"	1.15	1.15	15.03	13.07	14.95	13.00	16 May 2021	-
		Tebing Tinggi Village	N 02° 04' 22.01"	E 099° 59' 01.13"	1.00	1.00	22.20	22.20	22.08	22.08	16 May 2021	-
		Tebing Tinggi Village	N 02° 04' 16.58"	E 099° 59' 04.96"	1.50	1.50	31.26	20.84	31.09	20.73	16 May 2021	-
110	Abdul Hamid	Tebing Tinggi Village	N 02° 05' 25.17"	E 099° 59' 20.15"	1.12	1.12	20.72	18.50	20.59	18.39	16 May 2021	-
111	Agus Lasimin	Tebing Tinggi Village	N 02° 06' 06.92"	E 099° 59' 09.30"	1.50	1.50	32.80	21.86	32.61	21.74	16 May 2021	-
112	ahmad alfan marpaung	Tebing Tinggi Village	N 02° 05' 13.51"	E 100° 00' 10.90"	3.00	3.00	54.84	18.28	60.00	20.00	16 May 2021	-
113	Ahmad Najan	Tebing Tinggi Village	N 02° 06' 33.02"	E 100° 00' 10.77"	1.51	1.51	35.89	23.79	35.69	23.65	16 May 2021	-
		Tebing Tinggi Village	N 02° 05' 40.62"	E 099° 59' 12.03"	1.99	1.99	266.08	19.01	266.68	19.05	16 May 2021	-
		Tebing Tinggi Village	N 02° 06' 10.54"	E 099° 59' 49.73"	14.00	14.00	59.77	24.90	59.44	24.77	16 May 2021	-
		Tebing Tinggi Village	N 02° 06' 01.34"	E 099° 59' 24.94"	2.40	2.40	57.30	28.75	57.90	29.05	16 May 2021	-

No.	Smallholder Name	Location	Coordinate		Area (Ha)		Actual FFB production (MT/Year)	Yield (MT/Ha/Year)	Projection FFB Production (MT/Year)	Yield Projection (MT/Ha/Year)	Date of Joining	Date of Leaving
			Latitude	Latitude	Total Area	Production Area						
114	Ahmad Tohari	Tebing Tinggi Village	N 02° 05' 02.97"	E 099° 58' 42.07"	1.50	1.50	52.77	17.59	52.48	17.49	16 May 2021	-
		Tebing Tinggi Village	N 02° 05' 50.48"	E 099° 59' 40.39"	3.00	3.00	25.44	16.96	25.28	16.86	16 May 2021	-
		Tebing Tinggi Village	N 02° 05' 51.37"	E 099° 58' 55.25"	1.01	1.01	22.93	22.66	22.81	22.54	16 May 2021	-
115	Ahmat Rianto	Tebing Tinggi Village	N 02° 05' 16.92"	E 099° 59' 12.04"	0.39	0.39	7.92	20.31	7.88	20.19	16 May 2021	-
116	Ainil Fitri	Tebing Tinggi Village	N 02° 05' 08.97"	E 099° 59' 03.76"	1.33	1.33	28.31	21.22	28.15	21.10	16 May 2021	-
117	Akhyarruddin Hsb	Tebing Tinggi Village	N 02° 05' 46.85"	E 099° 59' 30.53"	2.29	2.29	32.17	14.02	31.99	13.94	16 May 2021	-
118	Aminul Rasyid	Tebing Tinggi Village	N 02° 02' 52.62"	E 100° 00' 19.52"	2.00	2.00	50.79	25.39	50.50	25.25	16 May 2021	-
119	Anas Salim	Tebing Tinggi Village	N 02° 05' 30.68"	E 099° 59' 27.74"	2.00	2.00	29.48	14.74	29.31	14.66	16 May 2021	-
		Tebing Tinggi Village	N 02° 06' 31.36"	E 099° 59' 52.75"	2.00	2.00	40.71	20.35	40.48	20.24	16 May 2021	-
120	Atmoko	Tebing Tinggi Village	N 02° 05' 45.95"	E 099° 59' 12.03"	5.00	5.00	72.14	20.61	71.70	20.49	16 May 2021	-



No.	Smallholder Name	Location	Coordinate		Area (Ha)		Actual FFB production (MT/Year)	Yield (MT/Ha/Year)	Projection FFB Production (MT/Year)	Yield Projection (MT/Ha/Year)	Date of Joining	Date of Leaving
			Latitude	Latitude	Total Area	Production Area						
		Tebing Tinggi Village	N 02° 05' 53.88"	E 099° 59' 12.38"	3.50	3.50	225.57	22.56	224.32	22.43	16 May 2021	-
		Tebing Tinggi Village	N 02° 05' 38.97"	E 099° 59' 19.87"	10.00	10.00	101.91	20.38	101.35	20.27	16 May 2021	-
121	Bonar David Hutahean	Tebing Tinggi Village	N 02° 06' 01.03"	E 100° 00' 08.59"	5.00	5.00	145.80	29.16	145.00	29.00	16 May 2021	-
122	Dahriatunnal Nst	Tebing Tinggi Village	N 02° 06' 47.03"	E 100° 00' 20.61"	2.00	2.00	19.00	17.86	18.90	17.76	16 May 2021	-
		Tebing Tinggi Village	N 02° 06' 42.93"	E 100° 00' 17.85"	1.06	1.06	39.67	19.80	39.45	19.69	16 May 2021	-
123	Devi Irwan	Tebing Tinggi Village	N 02° 05' 32.08"	E 099° 59' 20.86"	0.89	0.89	14.45	16.28	14.36	16.18	16 May 2021	-
		Tebing Tinggi Village	N 02° 05' 32.53"	E 099° 59' 28.24"	0.55	0.55	9.07	16.63	9.01	16.52	16 May 2021	-
		Tebing Tinggi Village	N 02° 06' 14.29"	E 100° 00' 06.77"	0.52	0.52	9.99	19.22	9.93	19.10	16 May 2021	-
		Tebing Tinggi Village	N 02° 06' 14.64"	E 100° 00' 02.84"	0.44	0.44	11.75	26.70	11.68	26.55	16 May 2021	-
124	Eko priyanto	Tebing Tinggi Village	N 02° 06' 28.29"	E 100° 00' 20.16"	2.00	2.00	55.53	27.77	55.23	27.61	16 May 2021	-

No.	Smallholder Name	Location	Coordinate		Area (Ha)		Actual FFB production (MT/Year)	Yield (MT/Ha/Year)	Projection FFB Production (MT/Year)	Yield Projection (MT/Ha/Year)	Date of Joining	Date of Leaving
			Latitude	Latitude	Total Area	Production Area						
125	Eko Susanto	Tebing Tinggi Village	N 02° 06' 50.63"	E 100° 00' 17.81"	1.03	1.03	20.33	19.70	20.22	19.59	16 May 2021	-
126	Faisal Riza	Tebing Tinggi Village	N 02° 06' 22.38"	E 099° 59' 59.46"	2.00	2.00	55.16	27.58	54.85	27.43	16 May 2021	-
		Tebing Tinggi Village	N 02° 05' 57.64"	E 099° 59' 41.70"	1.99	1.99	42.52	21.32	42.28	21.20	16 May 2021	-
127	H.Muksin	Tebing Tinggi Village	N 02° 05' 40.40"	E 099° 59' 44.48"	2.50	2.50	38.36	15.34	38.15	15.26	16 May 2021	-
		Tebing Tinggi Village	N 02° 05' 51.19"	E 099° 59' 46.11"	2.00	2.00	54.60	18.20	54.29	18.10	16 May 2021	-
		Tebing Tinggi Village	N 02° 06' 18.27"	E 100° 00' 01.85"	3.00	3.00	50.10	25.05	49.80	24.90	16 May 2021	-
		Tebing Tinggi Village	N 02° 05' 46.41"	E 099° 59' 26.82"	1.60	1.60	45.84	28.65	45.59	28.49	16 May 2021	-
128	Hasna	Tebing Tinggi Village	N 02° 05' 41.68"	E 099° 59' 25.43"	1.50	1.50	41.31	27.54	41.06	27.37	16 May 2021	-
129	Heri	Tebing Tinggi Village	N 02° 05' 59.36"	E 099° 59' 44.86"	1.00	1.00	15.67	15.67	15.58	15.58	16 May 2021	-
130	Herliana	Tebing Tinggi Village	N 02° 06' 35.33"	E 100° 00' 15.03"	7.00	7.00	147.59	21.08	146.77	20.97	16 May 2021	-

No.	Smallholder Name	Location	Coordinate		Area (Ha)		Actual FFB production (MT/Year)	Yield (MT/Ha/Year)	Projection FFB Production (MT/Year)	Yield Projection (MT/Ha/Year)	Date of Joining	Date of Leaving
			Latitude	Latitude	Total Area	Production Area						
131	Imran	Tebing Tinggi Village	N 02° 05' 33.98"	E 099° 58' 53.97"	0.82	0.82	22.20	26.92	22.80	27.65	16 May 2021	-
		Tebing Tinggi Village	N 02° 05' 23.19"	E 099° 58' 55.44"	3.07	3.07	66.50	21.66	66.13	21.54	16 May 2021	-
		Tebing Tinggi Village	N 02° 05' 55.56"	E 099° 59' 07.03"	0.82	0.82	20.95	25.41	20.83	25.27	16 May 2021	-
		Tebing Tinggi Village	N 02° 05' 49.64"	E 099° 59' 01.10"	0.45	0.45	9.77	21.70	9.71	21.58	16 May 2021	-
132	Indarmansyah	Tebing Tinggi Village	N 02° 06' 21.45"	E 099° 59' 14.43"	6.23	6.23	131.22	21.05	130.49	20.93	16 May 2021	-
133	Irwani	Tebing Tinggi Village	N 02° 05' 50.95"	E 099° 59' 02.24"	0.58	0.58	13.05	22.49	12.97	22.37	16 May 2021	-
134	Ismidar SPD	Tebing Tinggi Village	N 02° 05' 07.23"	E 099° 59' 08.67"	0.27	0.27	21.86	16.94	21.74	16.84	16 May 2021	-
		Tebing Tinggi Village	N 02° 06' 01.34"	E 099° 59' 24.94"	1.29	1.29	5.86	21.63	5.82	21.51	16 May 2021	-
135	Jauhar maknun	Tebing Tinggi Village	N 02° 05' 01.45"	E 099° 59' 01.02"	1.06	1.06	11.71	11.10	11.65	11.04	16 May 2021	-
136	Jupri	Tebing Tinggi Village	N 02° 05' 39.37"	E 099° 59' 19.72"	5.00	5.00	102.38	20.48	101.81	20.36	16 May 2021	-

No.	Smallholder Name	Location	Coordinate		Area (Ha)		Actual FFB production (MT/Year)	Yield (MT/Ha/Year)	Projection FFB Production (MT/Year)	Yield Projection (MT/Ha/Year)	Date of Joining	Date of Leaving
			Latitude	Latitude	Total Area	Production Area						
137	Khairanin	Tebing Tinggi Village	N 02° 05' 55.03"	E 099° 59' 28.53"	4.00	4.00	80.12	20.03	79.68	19.92	16 May 2021	-
138	Khairatul Mamnun	Tebing Tinggi Village	N 02° 05' 55.78"	E 099° 59' 06.61"	0.30	0.30	5.14	17.41	5.11	17.32	16 May 2021	-
		Tebing Tinggi Village	N 02° 05' 01.45"	E 099° 59' 01.02"	1.19	1.19	13.12	11.03	13.05	10.96	16 May 2021	-
139	Laila Sukma	Tebing Tinggi Village	N 02° 06' 11.78"	E 099° 59' 13.88"	0.32	0.32	6.71	20.80	7.31	22.66	16 May 2021	-
		Tebing Tinggi Village	N 02° 06' 12.88"	E 099° 59' 10.50"	0.24	0.24	6.48	26.53	6.44	26.38	16 May 2021	-
140	M.Daud	Tebing Tinggi Village	N 02° 06' 23.32"	E 100° 00' 06.93"	1.00	1.00	15.87	15.87	15.76	15.76	16 May 2021	-
		Tebing Tinggi Village	N 02° 05' 57.97"	E 099° 59' 23.45"	0.14	0.14	3.82	27.18	3.79	27.03	16 May 2021	-
		Tebing Tinggi Village	N 02° 05' 49.48"	E 099° 59' 03.89"	1.88	1.88	27.97	14.88	27.82	14.80	16 May 2021	-
141	Matlaal Helmi DRA	Tebing Tinggi Village	N 02° 06' 34.68"	E 099° 59' 59.45"	1.03	1.03	26.23	25.46	26.83	26.05	16 May 2021	-
		Tebing Tinggi Village	N 02° 05' 50.48"	E 099° 59' 40.39"	2.00	2.00	50.52	25.26	51.12	25.56	16 May 2021	-

No.	Smallholder Name	Location	Coordinate		Area (Ha)		Actual FFB production (MT/Year)	Yield (MT/Ha/Year)	Projection FFB Production (MT/Year)	Yield Projection (MT/Ha/Year)	Date of Joining	Date of Leaving
			Latitude	Latitude	Total Area	Production Area						
142	Mawaddah Ahyar Hsb	Tebing Tinggi Village	N 02° 06' 37.28"	E 100° 00' 16.67"	7.67	7.67	160.17	20.87	159.28	20.76	16 May 2021	-
143	Mhd.Fakhrurroji	Tebing Tinggi Village	N 02° 05' 05.35"	E 099° 59' 09.22"	0.26	0.26	5.25	20.48	5.22	20.37	16 May 2021	-
		Tebing Tinggi Village	N 02° 05' 08.97"	E 099° 59' 03.70"	0.68	0.68	13.68	20.19	13.61	20.08	16 May 2021	-
144	Misdi	Tebing Tinggi Village	N 02° 06' 12.78"	E 100° 00' 32.53"	1.00	1.00	15.38	15.38	15.29	15.29	16 May 2021	-
		Tebing Tinggi Village	N 02° 06' 31.62"	E 099° 59' 31.62"	0.73	0.73	8.84	12.11	8.79	12.05	16 May 2021	-
145	Muhammad Said	Tebing Tinggi Village	N 02° 06' 21.88"	E 099° 59' 47.70"	1.21	1.21	23.34	19.37	23.21	19.26	16 May 2021	-
146	Muhammad Sirat	Tebing Tinggi Village	N 02° 06' 54.98"	E 100° 00' 31.58"	1.69	1.69	35.66	21.12	35.47	21.00	16 May 2021	-
		Tebing Tinggi Village	N 02° 06' 07.35"	E 099° 59' 09.35"	1.50	1.50	34.95	23.30	34.74	23.16	16 May 2021	-
		Tebing Tinggi Village	N 02° 06' 08.60"	E 099° 59' 09.27"	3.50	3.50	72.46	20.70	72.06	20.59	16 May 2021	-
147	Narmin	Tebing Tinggi Village	N 02° 05' 52.82"	E 099° 59' 50.48"	0.75	0.75	16.79	22.53	16.70	22.41	16 May 2021	-

No.	Smallholder Name	Location	Coordinate		Area (Ha)		Actual FFB production (MT/Year)	Yield (MT/Ha/Year)	Projection FFB Production (MT/Year)	Yield Projection (MT/Ha/Year)	Date of Joining	Date of Leaving
			Latitude	Latitude	Total Area	Production Area						
		Tebing Tinggi Village	N 02° 06' 18.90"	E 099° 59' 13.00"	0.31	0.31	4.13	13.39	4.11	13.32	16 May 2021	-
		Tebing Tinggi Village	N 02° 06' 40.98"	E 100° 00' 08.02"	0.85	0.85	21.47	25.26	21.35	25.12	16 May 2021	-
		Tebing Tinggi Village	N 02° 06' 34.16"	E 100° 00' 11.85"	0.24	0.24	6.10	25.40	6.06	25.26	16 May 2021	-
		Tebing Tinggi Village	N 02° 06' 12.78"	E 100° 00' 32.53"	0.40	0.40	7.87	19.68	7.83	19.58	16 May 2021	-
		Tebing Tinggi Village	N 02° 05' 16.03"	E 099° 58' 54.77"	0.55	0.55	9.17	16.68	9.12	16.59	16 May 2021	-
148	Nasren Nasution	Tebing Tinggi Village	N 02° 05' 49.20"	E 099° 59' 37.92"	1.64	1.64	8.30	5.06	8.25	5.03	16 May 2021	-
		Tebing Tinggi Village	N 02° 06' 44.72"	E 100° 00' 25.14"	1.70	1.70	36.16	21.27	35.96	21.15	16 May 2021	-
		Tebing Tinggi Village	N 02° 06' 50.21"	E 100° 00' 23.08"	0.80	0.80	15.82	19.78	15.73	19.67	16 May 2021	-
149	Natasya'ul Ashwat	Tebing Tinggi Village	N 02° 05' 20.85"	E 099° 58' 50.61"	1.00	1.00	28.19	28.19	28.03	28.03	16 May 2021	-
150	Nazaruddin	Tebing Tinggi Village	N 02° 05' 38.91"	E 099° 59' 20.79"	0.40	0.40	5.89	14.73	5.86	14.64	16 May 2021	-

No.	Smallholder Name	Location	Coordinate		Area (Ha)		Actual FFB production (MT/Year)	Yield (MT/Ha/Year)	Projection FFB Production (MT/Year)	Yield Projection (MT/Ha/Year)	Date of Joining	Date of Leaving
			Latitude	Latitude	Total Area	Production Area						
		Tebing Tinggi Village	N 02° 05' 49.01"	E 099° 59' 33.69"	0.48	0.48	8.90	18.57	8.86	18.46	16 May 2021	-
		Tebing Tinggi Village	N 02° 06' 44.63"	E 099° 59' 44..29"	1.48	1.48	38.26	25.85	38.04	25.71	16 May 2021	-
151	Nazmah Sa'idah	Tebing Tinggi Village	N 02° 05' 04.91"	E 099° 59' 01.52"	1.32	1.32	19.01	14.40	18.91	14.32	16 May 2021	-
152	Nirwansyah Nst	Tebing Tinggi Village	N 02° 05' 34.06"	E 099° 59' 20.57"	0.29	0.29	5.49	18.61	5.46	18.51	16 May 2021	-
153	Nurawan	Tebing Tinggi Village	N 02° 05' 40.12"	E 099° 58' 59.35"	0.36	0.36	10.26	28.49	10.20	28.33	16 May 2021	-
1554	Nurhayati	Tebing Tinggi Village	N 02° 05' 01.10"	E 099° 59' 01.10"	0.45	0.45	8.13	18.07	8.08	17.97	16 May 2021	-
155	Nurmala	Tebing Tinggi Village	N 02° 05' 48.27"	E 099° 59' 44.12"	0.53	0.53	9.65	18.25	9.60	18.15	16 May 2021	-
156]	Pahmin	Tebing Tinggi Village	N 02° 06' 47.72"	E 100° 00' 12.75"	0.53	0.53	12.39	23.19	12.33	23.06	16 May 2021	-
157	Pangestu	Tebing Tinggi Village	N 02° 06' 56.97"	E 099° 59' 59.58"	0.89	0.89	13.78	15.54	13.71	15.45	16 May 2021	-
		Tebing Tinggi Village	N 02° 05' 31.28"	E 099° 59' 20.55"	1.00	1.00	16.92	16.92	16.83	16.83	16 May 2021	-

No.	Smallholder Name	Location	Coordinate		Area (Ha)		Actual FFB production (MT/Year)	Yield (MT/Ha/Year)	Projection FFB Production (MT/Year)	Yield Projection (MT/Ha/Year)	Date of Joining	Date of Leaving
			Latitude	Latitude	Total Area	Production Area						
158	Parliah	Tebing Tinggi Village	N 02° 02' 49.07"	E 100° 00' 25.11"	2.00	2.00	50.75	25.37	50.47	25.23	16 May 2021	-
159	paujianto	Tebing Tinggi Village	N 02° 06' 30.64"	E 100° 00' 09.54"	0.39	0.39	6.81	17.40	6.77	17.30	16 May 2021	-
		Tebing Tinggi Village	N 02° 05' 54.51"	E 099° 59' 20.02"	0.28	0.28	3.01	10.75	2.99	10.69	16 May 2021	-
160	Rebo	Tebing Tinggi Village	N 02° 06' 11.96"	E 099° 59' 55.76"	1.06	1.06	14.52	13.67	14.44	13.59	16 May 2021	-
		Tebing Tinggi Village	N 02° 05' 49.48"	E 099° 59' 33.89"	0.39	0.39	8.77	22.21	8.72	22.08	16 May 2021	-
		Tebing Tinggi Village	N 02° 05' 52.97"	E 099° 59' 03.62"	1.06	1.06	22.34	21.03	22.21	20.91	16 May 2021	-
		Tebing Tinggi Village	N 02° 05' 25.17"	E 099° 59' 20.15"	0.28	0.28	2.30	8.21	2.29	8.16	16 May 2021	-
161	Risma wati Hutabarat	Tebing Tinggi Village	N 02° 05' 43.61"	E 100° 00' 58.19"	2.00	2.00	46.62	23.31	46.36	23.18	16 May 2021	-
162	Safrah	Tebing Tinggi Village	N 02° 05' 33.12"	E 099° 59' 25.08"	0.24	0.24	4.03	17.15	4.01	17.05	16 May 2021	-
163	Samirah	Tebing Tinggi Village	N 02° 05' 56.42"	E 099° 59' 03.58"	0.70	0.70	13.29	18.99	13.22	18.88	16 May 2021	-



No.	Smallholder Name	Location	Coordinate		Area (Ha)		Actual FFB production (MT/Year)	Yield (MT/Ha/Year)	Projection FFB Production (MT/Year)	Yield Projection (MT/Ha/Year)	Date of Joining	Date of Leaving
			Latitude	Latitude	Total Area	Production Area						
164	Saut Partahi Situmeang	Tebing Tinggi Village	N 02° 06' 40.02"	E 100° 00' 10.20"	2.32	2.32	49.10	21.14	48.83	21.02	16 May 2021	-
165	Sayah Mardiah	Tebing Tinggi Village	N 02° 06' 18.88"	E 099° 59' 42.87"	1.90	1.90	39.26	20.71	39.04	20.59	16 May 2021	-
		Tebing Tinggi Village	N 02° 06' 21.95"	E 099° 59' 47.72"	1.56	1.56	31.25	20.06	31.08	19.95	16 May 2021	-
166	Sidik Dalimunthe	Tebing Tinggi Village	N 02° 05' 45.95"	E 099° 59' 12.03"	2.00	2.00	53.25	26.62	53.85	26.92	16 May 2021	-
167	Soibah,N	Tebing Tinggi Village	N 02° 06' 02.17"	E 099° 59' 39.63"	4.00	4.00	91.02	22.75	90.51	22.63	16 May 2021	-
		Tebing Tinggi Village	N 02° 06' 15.81"	E 099° 59' 39.30"	1.99	1.99	50.18	25.24	49.90	25.10	16 May 2021	-
		Tebing Tinggi Village	N 02° 06' 27.04"	E 099° 59' 47.61"	2.05	2.05	40.47	19.74	40.25	19.63	16 May 2021	-
168	Suderno	Tebing Tinggi Village	N 02° 06' 44.92"	E 100° 00' 14.93"	2.28	2.28	51.84	22.71	51.55	22.58	16 May 2021	-
		Tebing Tinggi Village	N 02° 06' 14.29"	E 100° 00' 06.77"	2.00	2.00	37.25	18.63	37.04	18.52	16 May 2021	-
169	Sunardi	Tebing Tinggi Village	N 02° 05' 52.46"	E 099° 59' 55.99"	1.98	1.98	44.89	22.67	44.60	22.53	16 May 2021	-

No.	Smallholder Name	Location	Coordinate		Area (Ha)		Actual FFB production (MT/Year)	Yield (MT/Ha/Year)	Projection FFB Production (MT/Year)	Yield Projection (MT/Ha/Year)	Date of Joining	Date of Leaving
			Latitude	Latitude	Total Area	Production Area						
170	Suriyas Mono	Tebing Tinggi Village	N 02° 05' 56.42"	E 099° 59' 12.63"	1.50	1.50	30.04	20.03	29.87	19.91	16 May 2021	-
171	Sutego	Tebing Tinggi Village	N 02° 06' 30.30"	E 100° 00' 09.04"	0.60	0.60	10.01	16.68	9.95	16.58	16 May 2021	-
		Tebing Tinggi Village	N 02° 06' 38.63"	E 100° 00' 25.46"	2.00	2.00	46.98	23.49	46.72	23.36	16 May 2021	-
172	Suwito	Tebing Tinggi Village	N 02° 06' 12.40"	E 099° 59' 14.23"	0.45	0.45	10.71	23.61	10.65	23.48	16 May 2021	-
		Tebing Tinggi Village	N 02° 06' 11.48"	E 099° 59' 10.10"	0.24	0.24	4.10	17.08	4.08	16.98	16 May 2021	-
		Tebing Tinggi Village	N 02° 05' 26.37"	E 099° 59' 24.42"	0.44	0.44	9.49	21.79	9.43	21.67	16 May 2021	-
173	Syamrah	Tebing Tinggi Village	N 02° 07' 02.62"	E 100° 00' 36.55"	1.91	1.91	42.51	22.23	42.27	22.11	16 May 2021	-
174	Syarulhurriah	Tebing Tinggi Village	N 02° 05' 54.23"	E 099° 59' 26.91"	1.60	1.60	26.75	16.72	26.60	16.63	16 May 2021	-
175	Tamrin	Tebing Tinggi Village	N 02° 06' 25.90"	E 099° 59' 45.75"	2.62	2.62	51.02	19.49	50.74	19.38	16 May 2021	-
176	Ukhyar	Tebing Tinggi Village	N 02° 06' 23.36"	E 099° 59' 57.40"	2.17	2.17	48.36	22.32	48.10	22.20	16 May 2021	-

No.	Smallholder Name	Location	Coordinate		Area (Ha)		Actual FFB production (MT/Year)	Yield (MT/Ha/Year)	Projection FFB Production (MT/Year)	Yield Projection (MT/Ha/Year)	Date of Joining	Date of Leaving
			Latitude	Latitude	Total Area	Production Area						
177	Yuda Kirana	Tebing Tinggi Village	N 02° 05' 46.59"	E 100° 05' 09.40"	1.51	1.51	12.53	8.31	42.27	28.02	16 May 2021	-
178	Yusniar	Tebing Tinggi Village	N 02° 06' 46.60"	E 100° 00' 20.44"	2.00	2.00	30.33	15.16	30.16	15.08	16 May 2021	-
		Tebing Tinggi Village	N 02° 05' 23.23"	E 099° 59' 20.67"	0.84	0.84	13.00	15.56	12.93	15.48	16 May 2021	-
		Tebing Tinggi Village	N 02° 05' 24.56"	E 099° 59' 20.11"	0.44	0.44	4.85	11.02	4.82	10.96	16 May 2021	-
179	Zainap	Tebing Tinggi Village	N 02° 05' 52.46"	E 099° 59' 55.99"	3.62	3.62	77.45	21.42	77.02	21.30	16 May 2021	-
		Tebing Tinggi Village	N 02° 06' 05.63"	E 099° 59' 36.05"	1.20	1.20	24.59	20.49	24.45	20.37	16 May 2021	-
180	Zulkarnaen	Tebing Tinggi Village	N 02° 06' 16.68"	E 100° 00' 59.92"	0.38	0.38	5.87	15.39	5.83	15.30	16 May 2021	-
181	Baharuddin	Tebing Tinggi Village	N 02° 07' 05.64"	E 099° 59' 57.74"	2.00	2.00	44.26	22.13	43.92	21.96	16 May 2021	-
182	Dikrun	Tebing Tinggi Village	N 02° 06' 55.79"	E 100° 00' 10.86"	1.00	1.00	22.13	22.13	21.96	21.96	16 May 2021	-
183	Edi Susilo	Tebing Tinggi Village	N 02° 07' 06.99"	E 099° 59' 37.03"	2.00	2.00	44.26	22.13	43.92	21.96	16 May 2021	-

No.	Smallholder Name	Location	Coordinate		Area (Ha)		Actual FFB production (MT/Year)	Yield (MT/Ha/Year)	Projection FFB Production (MT/Year)	Yield Projection (MT/Ha/Year)	Date of Joining	Date of Leaving
			Latitude	Latitude	Total Area	Production Area						
		Tebing Tinggi Village	N 02° 07' 06.85"	E 099° 59' 37.23"	2.00	2.00	45.48	22.74	45.13	22.57	16 May 2021	-
184	Sumiati	Tebing Tinggi Village	N 02° 06' 53.41"	E 099° 59' 53.52"	1.00	1.00	21.69	21.69	21.53	21.53	16 May 2021	-
185	Legiyem	Tebing Tinggi Village	N 02° 06' 55.39"	E 099° 59' 56.93"	1.00	1.00	21.69	21.69	21.53	21.53	16 May 2021	-
186	Musiyem	Tebing Tinggi Village	N 02° 06' 39.47"	E 099° 59' 47.04"	1.00	1.00	21.17	21.17	21.01	21.01	16 May 2021	-
187	Ramli	Tebing Tinggi Village	N 02° 06' 55.39"	E 099° 59' 56.93"	1.16	1.16	44.26	22.13	43.92	21.96	16 May 2021	-
		Tebing Tinggi Village	N 02° 07' 04.66"	E 099° 59' 12.16"	1.00	1.00	22.57	22.57	22.40	22.40	16 May 2021	-
		Tebing Tinggi Village	N 02° 07' 04.86"	E 099° 59' 14.54"	1.00	1.00	22.13	22.13	21.96	21.96	16 May 2021	-
		Tebing Tinggi Village	N 02° 06' 43.61"	E 099° 59' 21.56"	1.00	1.00	24.08	24.08	23.89	23.89	16 May 2021	-
		Tebing Tinggi Village	N 02° 06' 34.19"	E 099° 59' 12.28"	2.00	2.00	23.18	19.99	23.01	19.83	16 May 2021	-
188	Sumadi	Tebing Tinggi Village	N 02° 06' 52.96"	E 099° 59' 52.35"	1.00	1.00	21.69	21.69	21.53	21.53	16 May 2021	-

No.	Smallholder Name	Location	Coordinate		Area (Ha)		Actual FFB production (MT/Year)	Yield (MT/Ha/Year)	Projection FFB Production (MT/Year)	Yield Projection (MT/Ha/Year)	Date of Joining	Date of Leaving
			Latitude	Latitude	Total Area	Production Area						
189	Supriadi	Tebing Tinggi Village	N 02° 06' 50.48"	E 099° 59' 46.76"	2.00	2.00	42.33	21.17	42.01	21.01	16 May 2021	-
190	Suriyadi	Tebing Tinggi Village	N 02° 07' 00.83"	E 099° 59' 53.82"	1.00	1.00	21.17	21.17	21.01	21.01	16 May 2021	-
		Tebing Tinggi Village	N 02° 07' 08.23"	E 099° 59' 59.13"	1.00	1.00	27.98	27.98	27.77	27.77	16 May 2021	-
191	Surianto	Tebing Tinggi Village	N 02° 06' 44.81"	E 099° 59' 44.99"	1.05	1.05	19.59	18.66	19.44	18.52	16 May 2021	-
		Tebing Tinggi Village	N 02° 06' 53.41"	E 099° 59' 53.52"	1.05	1.05	10.32	9.83	20.53	19.55	16 May 2021	-
192	Suryanto	Tebing Tinggi Village	N 02° 06' 46.74"	E 099° 59' 59.53"	2.00	2.00	42.33	21.17	42.00	21.01	16 May 2021	-
193	suyanti	Tebing Tinggi Village	N 02° 07' 07.50"	E 099° 59' 58.74"	0.63	0.63	13.85	22.13	13.74	21.96	16 May 2021	-
194	Sayono	Tebing Tinggi Village	N 02° 07' 00.45"	E 100° 00' 04.55"	1.00	1.00	22.22	22.22	22.05	22.05	16 May 2021	-
		Tebing Tinggi Village	N 02° 07' 00.03"	E 100° 00' 06.54"	0.50	0.50	12.54	25.08	13.14	26.28	16 May 2021	-
195	Rasidi	Tebing Tinggi Village	N 02° 06' 58.55"	E 100° 00' 22.66"	1.00	1.00	22.13	22.13	21.96	21.96	16 May 2021	-

No.	Smallholder Name	Location	Coordinate		Area (Ha)		Actual FFB production (MT/Year)	Yield (MT/Ha/Year)	Projection FFB Production (MT/Year)	Yield Projection (MT/Ha/Year)	Date of Joining	Date of Leaving
			Latitude	Latitude	Total Area	Production Area						
196	Sutar	Tebing Tinggi Village	N 02° 07' 05.64"	E 099° 59' 57.74"	1.00	1.00	23.81	23.81	24.41	24.41	16 May 2021	-
197	Agus Priyanto	Tebing Tinggi Village	N 02° 05' 39.78"	E 100° 03' 03.54"	1.39	1.39	30.51	21.97	30.24	21.77	16 May 2021	-
198	Amri	Tebing Tinggi Village	N 02° 06' 48.17"	E 100° 03' 29.03"	5.00	5.00	93.35	18.67	105.74	21.15	16 May 2021	-
199	Ari Anti	Tebing Tinggi Village	N 02° 06' 29.54"	E 100° 02' 58.06"	3.67	3.67	80.30	21.90	79.57	21.70	16 May 2021	-
200	Armen Antoni Pulungan	Tebing Tinggi Village	N 02° 06' 42.10"	E 100° 02' 57.69"	1.10	1.10	21.82	19.79	21.62	19.61	16 May 2021	-
		Tebing Tinggi Village	N 02° 06' 39.75"	E 100° 02' 57.66"	1.28	1.28	30.61	24.01	30.33	23.79	16 May 2021	-
		Tebing Tinggi Village	N 02° 06' 39.81"	E 100° 02' 46.83"	1.01	1.01	22.44	22.16	22.24	21.96	16 May 2021	-
		Tebing Tinggi Village	N 02° 06' 48.61"	E 100° 03' 20.55"	1.01	1.01	24.40	24.10	24.18	23.88	16 May 2021	-
		Tebing Tinggi Village	N 02° 06' 48.61"	E 100° 03' 20.55"	12.00	12.00	229.80	19.15	227.70	18.98	16 May 2021	-
201	Abdur Rahman Dalimunthe	Tebing Tinggi Village	N 02° 06' 31.24"	E 100° 03' 22.20"	12.00	12.00	243.86	20.32	244.46	20.37	16 May 2021	-

No.	Smallholder Name	Location	Coordinate		Area (Ha)		Actual FFB production (MT/Year)	Yield (MT/Ha/Year)	Projection FFB Production (MT/Year)	Yield Projection (MT/Ha/Year)	Date of Joining	Date of Leaving
			Latitude	Latitude	Total Area	Production Area						
202	Bangun Marpaung	Tebing Tinggi Village	N 02° 06' 15.40"	E 100° 03' 00.42"	4.00	4.00	71.32	17.83	70.67	17.67	16 May 2021	-
		Tebing Tinggi Village	N 02° 07' 00.51"	E 100° 03' 04.62"	1.49	1.49	36.65	24.68	36.32	24.46	16 May 2021	-
		Tebing Tinggi Village	N 02° 07' 00.51"	E 100° 03' 04.62"	1.93	1.93	36.16	18.72	35.83	18.55	16 May 2021	-
203	Daniel Erikson	Tebing Tinggi Village	N 02° 07' 09.02"	E 100° 03' 16.54"	1.99	1.99	38.70	19.41	38.34	19.23	16 May 2021	-
204	Darma Surya Ritonga	Tebing Tinggi Village	N 02° 06' 01.38"	E 100° 03' 14.69"	2.00	2.00	28.55	14.27	28.29	14.14	16 May 2021	-
205	Darto	Tebing Tinggi Village	N 02° 06' 48.91"	E 100° 03' 15.83"	2.00	2.00	59.94	29.97	59.85	29.92	16 May 2021	-
206	Daud Rangkuti	Tebing Tinggi Village	N 02° 06' 59.48"	E 100° 03' 17.16"	2.00	2.00	41.94	20.97	41.56	20.78	16 May 2021	-
207	Evarina Hutabarat	Tebing Tinggi Village	N 02° 07' 09.56"	E 100° 03' 11.19"	1.07	1.07	24.07	22.60	23.85	22.40	16 May 2021	-
208	Fitri Nurlianingsih	Tebing Tinggi Village	N 02° 06' 48.61"	E 100° 03' 30.55"	1.74	1.74	51.69	29.64	51.21	29.37	16 May 2021	-
209	Hermansyah	Tebing Tinggi Village	N 02° 05' 52.08"	E 100° 03' 13.69"	0.88	0.88	17.47	19.76	17.31	19.58	16 May 2021	-

No.	Smallholder Name	Location	Coordinate		Area (Ha)		Actual FFB production (MT/Year)	Yield (MT/Ha/Year)	Projection FFB Production (MT/Year)	Yield Projection (MT/Ha/Year)	Date of Joining	Date of Leaving
			Latitude	Latitude	Total Area	Production Area						
210	Indra Bakti	Tebing Tinggi Village	N 02° 06' 12.35"	E 100° 03'16.31"	1.69	1.69	20.60	12.17	20.41	12.06	16 May 2021	-
211	Jayusman	Tebing Tinggi Village	N 02° 05' 39.78"	E 100° 03'03.54"	0.83	0.83	15.88	19.25	15.74	19.07	16 May 2021	-
212	Awaluddin hrp i	Tebing Tinggi Village	N 02° 06' 58.27"	E 100° 03'32.06"	7.05	7.05	137.19	19.46	135.94	19.28	16 May 2021	-
213	Junaidi	Tebing Tinggi Village	N 02° 06' 58.29"	E 100° 03'31.71"	2.00	2.00	36.09	18.04	57.37	28.69	16 May 2021	-
214	Muhammad Idris Nst	Tebing Tinggi Village	N 02° 05' 53.24"	E 100° 03'09.15"	1.00	1.00	22.54	17.81	22.34	17.65	16 May 2021	-
215	Luther Parangin Angin	Tebing Tinggi Village	N 02° 06' 48.17"	E 100° 03'29.03"	2.11	2.11	24.05	24.05	23.83	23.83	16 May 2021	-
216	Junaedi	Tebing Tinggi Village	N 02° 05' 42.20"	E 100° 03'07.11"	1.27	1.27	34.51	16.35	34.20	16.20	16 May 2021	-
217	Mhd. Ali Hasan Rangkkuti	Tebing Tinggi Village	N 02° 06' 46.35"	E 100° 02'58.03"	1.72	1.72	35.41	20.57	35.08	20.39	16 May 2021	-
218	Muli junaidi	Tebing Tinggi Village	N 02° 05' 54.45"	E 100° 03'11.91"	0.27	0.27	52.96	26.60	52.48	26.36	16 May 2021	-
		Tebing Tinggi Village	N 02° 06' 29.54"	E 100° 02' 58.06"	1.99	1.99	4.37	15.94	4.33	15.80	16 May 2021	-



No.	Smallholder Name	Location	Coordinate		Area (Ha)		Actual FFB production (MT/Year)	Yield (MT/Ha/Year)	Projection FFB Production (MT/Year)	Yield Projection (MT/Ha/Year)	Date of Joining	Date of Leaving
			Latitude	Latitude	Total Area	Production Area						
219	Nasip	Tebing Tinggi Village	N 02° 06' 00.55"	E 100° 03' 30.01"	3.30	3.30	63.98	19.37	63.39	19.20	16 May 2021	-
220	Node Br Saragih	Tebing Tinggi Village	N 02° 06' 04.94"	E 100° 03' 12.96"	7.00	7.00	128.03	18.29	126.86	18.12	16 May 2021	-
221	Ponimin	Tebing Tinggi Village	N 02° 06' 58.51"	E 100° 00' 28.64"	0.90	0.90	14.86	16.44	14.72	16.29	16 May 2021	-
222	Rudi Kamsari	Tebing Tinggi Village	N 02° 06' 44.38"	E 100° 02' 57.91"	1.50	1.50	32.71	21.81	32.41	21.61	16 May 2021	-
223	Donald Mangara	Tebing Tinggi Village	N 02° 06' 44.38"	E 100° 02' 57.91"	2.00	2.00	45.02	22.51	44.61	22.31	16 May 2021	-
224	Baruddin	Tebing Tinggi Village	N 02° 06' 22.00"	E 100° 02' 58.91"	10.00	10.00	224.84	22.48	222.79	22.28	16 May 2021	-
225	Saadah Hayati	Tebing Tinggi Village	N 02° 06' 46.60"	E 100° 00' 20.44"	0.88	0.88	16.47	18.65	16.32	18.48	16 May 2021	-
226	Sariman	Tebing Tinggi Village	N 02° 06' 01.37"	E 100° 03' 11.37"	0.72	0.72	13.38	18.48	13.26	18.31	16 May 2021	-
227	sarmauli tumanggor	Tebing Tinggi Village	N 02° 06' 59.76"	E 100° 03' 14.14"	1.49	1.49	27.74	18.68	27.49	18.51	16 May 2021	-
228	Sikiyem	Tebing Tinggi Village	N 02° 06' 04.31"	E 100° 03' 07.14"	0.97	0.97	20.81	21.47	20.62	21.28	16 May 2021	-

No.	Smallholder Name	Location	Coordinate		Area (Ha)		Actual FFB production (MT/Year)	Yield (MT/Ha/Year)	Projection FFB Production (MT/Year)	Yield Projection (MT/Ha/Year)	Date of Joining	Date of Leaving
			Latitude	Latitude	Total Area	Production Area						
229	Siti Jariah	Tebing Tinggi Village	N 02° 06' 52.22"	E 100° 02'51.72"	1.89	1.89	41.67	22.04	41.29	21.83	16 May 2021	-
230	Sugianto	Tebing Tinggi Village	N 02° 06' 48.70"	E 100° 03' 18.80"	2.00	2.00	38.64	19.32	38.29	19.14	16 May 2021	-
		Tebing Tinggi Village	N 02° 06' 11.40"	E 100° 03'05.84"	1.46	1.46	28.18	19.30	27.92	19.13	16 May 2021	-
		Tebing Tinggi Village	N 02° 06' 11.80"	E 100° 03'07.12"	1.49	1.49	24.93	16.79	26.99	18.17	16 May 2021	-
		Tebing Tinggi Village	N 02° 06' 30.53"	E 100° 02'59.38"	0.39	0.39	7.68	19.54	7.61	19.37	16 May 2021	-
231	Sukanti	Tebing Tinggi Village	N 02° 06' 43.44"	E 100° 03'04.73"	2.00	2.00	36.38	18.21	36.04	18.04	16 May 2021	-
232	Sumarlina	Tebing Tinggi Village	N 02° 06' 01.90"	E 100° 03'01.22"	0.79	0.79	13.51	17.02	15.89	20.02	16 May 2021	-
233	Suparjo	Tebing Tinggi Village	N 02° 06' 08.39"	E 100° 03'03.62"	2.00	2.00	34.86	17.43	34.54	17.27	16 May 2021	-
		Tebing Tinggi Village	N 02° 06' 58.73"	E 100° 03' 11.81"	1.00	1.00	17.50	17.50	17.34	17.34	16 May 2021	-
234	Supriadi	Tebing Tinggi Village	N 02° 06' 04.05"	E 100° 03' 37.91"	0.38	0.38	5.54	14.74	7.49	19.94	16 May 2021	-

No.	Smallholder Name	Location	Coordinate		Area (Ha)		Actual FFB production (MT/Year)	Yield (MT/Ha/Year)	Projection FFB Production (MT/Year)	Yield Projection (MT/Ha/Year)	Date of Joining	Date of Leaving
			Latitude	Latitude	Total Area	Production Area						
		Tebing Tinggi Village	N 02° 06' 08.24"	E 100° 03'13.98"	0.29	0.29	4.02	14.05	5.98	20.91	16 May 2021	-
		Tebing Tinggi Village	N 02° 06' 02.05"	E 100° 03' 09.38"	0.67	0.67	13.06	19.54	12.95	19.36	16 May 2021	-
235	Sutardi	Tebing Tinggi Village	N 02° 06' 46.61"	E 100° 02'56.96"	0.56	0.56	15.65	28.07	16.25	29.15	16 May 2021	-
236	Syahban	Tebing Tinggi Village	N 02°06' 37.21"	E 100° 03'24.37"	5.00	5.00	97.84	19.57	100.95	20.19	16 May 2021	-
		Tebing Tinggi Village	N 02° 06' 41.42"	E 100° 03'15.72"	0.71	0.71	20.68	29.21	20.00	28.25	16 May 2021	-
237	Tri Andini	Tebing Tinggi Village	N 02° 06' 08.28"	E 100° 03'14.00"	1.00	1.00	17.73	17.73	19.02	19.02	16 May 2021	-
238	Wisnu Ramadani	Tebing Tinggi Village	N 02°06' 52.99"	E 100° 02' 46.35"	1.86	1.86	41.15	22.14	43.77	23.55	16 May 2021	-
239	Yenita	Tebing Tinggi Village	N 02° 06' 58.51"	E 100° 00' 28.64"	2.88	2.88	49.63	17.23	63.39	22.01	16 May 2021	-
Total					685.33	685.33	14,047.34	20.50	14,100	20.57		