

Date: 17 July 2023

Notification of RSPO Independent Smallholders Standard Initial Certification MS-B of Perkumpulan Sejahtera Pelita Nusantara (RSPO Membership Number: 1-0448-23-000-00, 25 May 2023)

Dear Stakeholders,

Perkumpulan Sejahtera Pelita Nusantara has applied to Mutuagung Lestari and will conduct Initial Certification (MS-B), located at Seureuke Village, Langkahan Sub District, Aceh Utara District, Aceh Province, Indonesia against the requirement of RSPO Independent Smallholder Standard, Indonesia National Interpretation for the Production of Sustainable Palm Oil 2020, endorsed by the RSPO Board of Governors on 14 February 2022.

Perkumpulan Sejahtera Pelita Nusantara has been registered on PalmTrace IT platform with member ID RSPO_PO1000015696. Mutuagung Lestari has arranged to conduct the assessment to Perkumpulan Petani Swadaya Bangka Lestari on **28 to 31 August 2023**.

Name of Group Manager	Group Manager Address	ISH Group Location	GPS Reference	
			Latitude	Longitude
Sudikan	Jalan Exxon MOI Blok A, Seureuke Village, Langkahan Sub District, Aceh Utara District, Aceh Province, Indonesia	Jalan Exxon MOI Blok A, Seureuke Village, Langkahan Sub District, Aceh Utara District, Aceh Province, Indonesia	N 4° 52' 28.4"	E 97° 27' 02.3"

Perkumpulan Sejahtera Pelita Nusantara is a group of oil palm farmers based in Indonesia with the goal and understanding to achieve sustainability

List of Group Members Petani Koltiva

No	Name of Farmer	Location	GPS Reference		Area Summary (Ha)		Forecasted Annual FFB Production (MT)	Any Liabilities? Yes/No	Date of Join on the Group
			Latitude	Longitude	Total Certified Area	Planted Area			
1	Abdul Azis	Seureuke Village, Langkahan Sub District, Aceh Utara District, Aceh Province, Indonesia	4° 53' 52.136" N	97° 25' 9.142" E	2	2	0	No	05 October 2022
2	Abdurrahman	Seureuke Village, Langkahan Sub District, Aceh Utara District, Aceh Province, Indonesia	4° 53' 20.367" N	97° 26' 33.810" E	2	2	34	No	01 October 2022
		Seureuke Village, Langkahan Sub District, Aceh Utara District, Aceh Province, Indonesia	4° 52' 20.374" N	97° 25' 42.111" E	0.4	0.4	8	No	01 October 2022
		Seureuke Village, Langkahan Sub District, Aceh Utara District, Aceh Province, Indonesia	4° 53' 14.465" N	97° 26' 14.296" E	2	2	0	No	01 October 2022
		Seureuke Village, Langkahan Sub District, Aceh Utara District, Aceh Province, Indonesia	4° 53' 3.773" N	97° 26' 14.260" E	2	2	0	No	01 October 2022
3	Abdurrahman	Seureuke Village, Langkahan Sub District, Aceh Utara District, Aceh Province, Indonesia	4° 53' 3.773" N	97° 26' 14.260" E	2	2	0	No	01 October 2022
		Seureuke Village, Langkahan Sub District, Aceh Utara District, Aceh Province, Indonesia	4° 53' 3.773" N	97° 26' 14.260" E	2	2	0	No	01 October 2022
4	Ageng Praseta Aji	Seureuke Village, Langkahan Sub District, Aceh Utara District, Aceh Province, Indonesia	4° 53' 36.677" N	97° 24' 59.989" E	2	2	0	No	01 October 2022
		Seureuke Village, Langkahan Sub District, Aceh Utara District, Aceh Province, Indonesia	4° 54' 44.321" N	97° 26' 1.976" E	2	2	0	No	01 October 2022
5	Ahmad Ghufriani	Seureuke Village, Langkahan Sub District, Aceh Utara District, Aceh Province, Indonesia	4° 54' 22.306" N	97° 25' 12.286" E	2	2	32	No	03 October 2022
6	Ahmad Hidayat	Seureuke Village, Langkahan Sub District, Aceh Utara District, Aceh Province, Indonesia	4° 55' 4.170" N	97° 25' 56.235" E	2	2	0	No	01 October 2022
		Seureuke Village, Langkahan Sub District, Aceh Utara District, Aceh Province, Indonesia	4° 53' 13.436" N	97° 26' 3.569" E	2	2	32	No	01 October 2022
7	Ahmad Junarto	Seureuke Village, Langkahan Sub District, Aceh Utara District, Aceh Province, Indonesia	4° 51' 44.043" N	97° 26' 2.484" E	2	2	0	No	05 October 2022
		Seureuke Village, Langkahan Sub District, Aceh Utara District, Aceh Province, Indonesia	4° 51' 59.334" N	97° 26' 15.894" E	1	1	10.2	No	05 October 2022
		Seureuke Village, Langkahan Sub District, Aceh Utara District, Aceh Province, Indonesia	4° 51' 58.328" N	97° 26' 18.835" E	1	1	18.4	No	05 October 2022
		Seureuke Village, Langkahan Sub District, Aceh Utara District, Aceh Province, Indonesia	4° 51' 57.913" N	97° 26' 21.225" E	0.43	0.43	8.3	No	05 October 2022
8	Alifah	Seureuke Village, Langkahan Sub District, Aceh Utara District, Aceh Province, Indonesia	4° 51' 44.223" N	97° 25' 53.255" E	1	1	16	No	01 October 2022
9	Ali Mustafa	Seureuke Village, Langkahan Sub District, Aceh Utara District, Aceh Province, Indonesia	4° 52' 56.529" N	97° 26' 10.085" E	2	2	12.75	No	03 October 2022
10	Alimin	Seureuke Village, Langkahan Sub District, Aceh Utara District, Aceh Province, Indonesia	4° 51' 50.035" N	97° 25' 18.661" E	1	1	20.8	No	03 October 2022
11	Anam Ashari	Seureuke Village, Langkahan Sub District, Aceh Utara District, Aceh Province, Indonesia	4° 53' 2.825" N	97° 25' 49.932" E	1	1	19.8	No	06 October 2022
		Seureuke Village, Langkahan Sub District, Aceh Utara District, Aceh Province, Indonesia	4° 53' 5.271" N	97° 25' 51.807" E	1	1	19.8	No	06 October 2022
12	Andi	Seureuke Village, Langkahan Sub District, Aceh Utara District, Aceh Province, Indonesia	4° 52' 13.152" N	97° 25' 45.563" E	1	1	17	No	03 October 2022
13	Andi Suryandi	Seureuke Village, Langkahan Sub District, Aceh Utara District, Aceh Province, Indonesia	4° 54' 11.693" N	97° 25' 29.402" E	2	2	31	No	01 October 2022
		Seureuke Village, Langkahan Sub District, Aceh Utara District, Aceh Province, Indonesia	4° 55' 9.169" N	97° 25' 39.999" E	0.67	0.67	9.4	No	01 October 2022
14	Arbianto	Seureuke Village, Langkahan Sub District, Aceh Utara District, Aceh Province, Indonesia	4° 53' 15.839" N	97° 26' 6.390" E	2	2	0	No	03 October 2022
15	Ari Pradana Putra	Seureuke Village, Langkahan Sub District, Aceh Utara District, Aceh Province, Indonesia	4° 52' 45.290" N	97° 26' 16.882" E	2	2	6	No	01 October 2022
16	Arifin	Seureuke Village, Langkahan Sub District, Aceh Utara District, Aceh Province, Indonesia	4° 53' 43.734" N	97° 26' 31.720" E	2	2	0	No	03 October 2022
		Seureuke Village, Langkahan Sub District, Aceh Utara District, Aceh Province, Indonesia	4° 54' 11.715" N	97° 26' 21.256" E	2	2	0	No	03 October 2022
17	Ashadi	Seureuke Village, Langkahan Sub District, Aceh Utara District, Aceh Province, Indonesia	4° 52' 5.966" N	97° 26' 44.347" E	0.91	0.91	15.6	No	01 October 2022
18	Ashari	Seureuke Village, Langkahan Sub District, Aceh Utara District, Aceh Province, Indonesia	4° 54' 38.155" N	97° 26' 1.860" E	2	2	24.4	No	01 October 2022
19	Asri	Seureuke Village, Langkahan Sub District, Aceh Utara District, Aceh Province, Indonesia	4° 53' 18.474" N	97° 26' 8.550" E	2	2	0	No	01 October 2022
20	Asri	Seureuke Village, Langkahan Sub District, Aceh Utara District, Aceh Province, Indonesia	4° 53' 16.566" N	97° 26' 54.585" E	0.76	0.76	11.25	No	03 October 2022
		Seureuke Village, Langkahan Sub District, Aceh Utara District, Aceh Province, Indonesia	4° 54' 50.597" N	97° 25' 58.657" E	2	2	0	No	03 October 2022
		Seureuke Village, Langkahan Sub District, Aceh Utara District, Aceh Province, Indonesia	4° 55' 6.215" N	97° 25' 51.051" E	2	2	0	No	03 October 2022
		Seureuke Village, Langkahan Sub District, Aceh Utara District, Aceh Province, Indonesia	4° 54' 44.639" N	97° 26' 5.681" E	2	2	0	No	03 October 2022
21	Awan Suryanto	Seureuke Village, Langkahan Sub District, Aceh Utara District, Aceh Province, Indonesia	4° 53' 50.450" N	97° 25' 30.796" E	2	2	28	No	05 October 2022
		Seureuke Village, Langkahan Sub District, Aceh Utara District, Aceh Province, Indonesia	4° 53' 47.073" N	97° 25' 32.186" E	2	2	22.4	No	05 October 2022
22	Badri Astuti	Seureuke Village, Langkahan Sub District, Aceh Utara District, Aceh Province, Indonesia	4° 54' 10.976" N	97° 25' 13.290" E	2	2	32	No	03 October 2022
23	Bambang Hariamin	Seureuke Village, Langkahan Sub District, Aceh Utara District, Aceh Province, Indonesia	4° 54' 32.041" N	97° 25' 51.631" E	2	2	30.4	No	03 October 2022
		Seureuke Village, Langkahan Sub District, Aceh Utara District, Aceh Province, Indonesia	4° 54' 19.301" N	97° 26' 19.362" E	2	2	0	No	03 October 2022
24	Bambang Susanto	Seureuke Village, Langkahan Sub District, Aceh Utara District, Aceh Province, Indonesia	4° 52' 4.481" N	97° 25' 49.995" E	0.9118	0.9118	21.2	No	05 October 2022
		Seureuke Village, Langkahan Sub District, Aceh Utara District, Aceh Province, Indonesia	4° 52' 4.082" N	97° 25' 47.058" E	1	1	16.3	No	05 October 2022
		Seureuke Village, Langkahan Sub District, Aceh Utara District, Aceh Province, Indonesia	4° 52' 4.318" N	97° 25' 52.723" E	0.79	0.79	12.4	No	05 October 2022
25	Bambang Subtyo	Seureuke Village, Langkahan Sub District, Aceh Utara District, Aceh Province, Indonesia	4° 53' 6.543" N	97° 26' 11.575" E	2	2	21.75	No	01 October 2022
26	Budi	Seureuke Village, Langkahan Sub District, Aceh Utara District, Aceh Province, Indonesia	4° 54' 17.981" N	97° 25' 27.808" E	2	2	32.6	No	05 October 2022
27	Budi Anto	Seureuke Village, Langkahan Sub District, Aceh Utara District, Aceh Province, Indonesia	4° 54' 44.786" N	97° 26' 15.617" E	2	2	0	No	01 October 2022
28	Cuok Sutarno	Seureuke Village, Langkahan Sub District, Aceh Utara District, Aceh Province, Indonesia	4° 53' 52.381" N	97° 25' 12.532" E	2	2	0	No	05 October 2022
		Seureuke Village, Langkahan Sub District, Aceh Utara District, Aceh Province, Indonesia	4° 52' 46.232" N	97° 26' 11.105" E	2	2	23.2	No	05 October 2022
		Seureuke Village, Langkahan Sub District, Aceh Utara District, Aceh Province, Indonesia	4° 53' 28.643" N	97° 26' 32.679" E	2	2	0	No	05 October 2022
		Seureuke Village, Langkahan Sub District, Aceh Utara District, Aceh Province, Indonesia	4° 53' 12.339" N	97° 26' 11.462" E	2	2	0	No	05 October 2022
		Seureuke Village, Langkahan Sub District, Aceh Utara District, Aceh Province, Indonesia	4° 54' 7.851" N	97° 25' 17.463" E	2	2	0	No	05 October 2022
		Seureuke Village, Langkahan Sub District, Aceh Utara District, Aceh Province, Indonesia	4° 54' 26.751" N	97° 26' 9.183" E	2	2	0	No	05 October 2022
		Seureuke Village, Langkahan Sub District, Aceh Utara District, Aceh Province, Indonesia	4° 53' 1.511" N	97° 25' 41.057" E	2	2	34.5	No	05 October 2022
29	Darmaji	Seureuke Village, Langkahan Sub District, Aceh Utara District, Aceh Province, Indonesia	4° 54' 7.162" N	97° 25' 27.757" E	0.75	0.75	18.2	No	03 October 2022
30	Daryono	Seureuke Village, Langkahan Sub District, Aceh Utara District, Aceh Province, Indonesia	4° 54' 19.823" N	97° 26' 0.840" E	2	2	24	No	03 October 2022
31	Dewi	Seureuke Village, Langkahan Sub District, Aceh Utara District, Aceh Province, Indonesia	4° 51' 38.338" N	97° 27' 25.844" E	2	2	27.35	No	03 October 2022

32	Dwi Iswahyudi	Seureuke Village, Langkahan Sub District, Aceh Utara District, Aceh Province, Indonesia	4° 54' 20.150" N	97° 26' 9.944" E	2	2	34	No	01 October 2022
33	Dyah Ruliani	Seureuke Village, Langkahan Sub District, Aceh Utara District, Aceh Province, Indonesia	4° 52' 27.655" N	97° 26' 14.815" E	1	1	17.6	No	01 October 2022
34	Edi Karyawanto	Seureuke Village, Langkahan Sub District, Aceh Utara District, Aceh Province, Indonesia	4° 54' 13.240" N	97° 26' 16.481" E	2	2	26.2	No	05 October 2022
		Seureuke Village, Langkahan Sub District, Aceh Utara District, Aceh Province, Indonesia	4° 54' 6.936" N	97° 25' 58.747" E	2	2	0	No	05 October 2022
		Seureuke Village, Langkahan Sub District, Aceh Utara District, Aceh Province, Indonesia	4° 54' 6.938" N	97° 25' 56.604" E	2	2	0	No	05 October 2022
		Seureuke Village, Langkahan Sub District, Aceh Utara District, Aceh Province, Indonesia	4° 54' 6.774" N	97° 26' 1.185" E	2	2	0	No	05 October 2022
		Seureuke Village, Langkahan Sub District, Aceh Utara District, Aceh Province, Indonesia	4° 53' 30.858" N	97° 25' 28.008" E	2	2	34	No	05 October 2022
		Seureuke Village, Langkahan Sub District, Aceh Utara District, Aceh Province, Indonesia	4° 53' 3.187" N	97° 26' 5.674" E	2	2	0	No	05 October 2022
		Seureuke Village, Langkahan Sub District, Aceh Utara District, Aceh Province, Indonesia	4° 54' 20.162" N	97° 26' 16.461" E	2	2	0	No	05 October 2022
35	Edi Maksun	Seureuke Village, Langkahan Sub District, Aceh Utara District, Aceh Province, Indonesia	4° 51' 55.313" N	97° 26' 39.747" E	1	1	23.4	No	01 October 2022
36	Edi Mulya Beti A.Md.	Seureuke Village, Langkahan Sub District, Aceh Utara District, Aceh Province, Indonesia	4° 52' 30.578" N	97° 26' 48.780" E	1	1	20	No	03 October 2022
		Seureuke Village, Langkahan Sub District, Aceh Utara District, Aceh Province, Indonesia	4° 52' 30.942" N	97° 26' 47.150" E	1	1	24	No	03 October 2022
		Seureuke Village, Langkahan Sub District, Aceh Utara District, Aceh Province, Indonesia	4° 52' 31.284" N	97° 26' 45.487" E	1	1	24	No	03 October 2022
		Seureuke Village, Langkahan Sub District, Aceh Utara District, Aceh Province, Indonesia	4° 51' 41.294" N	97° 26' 27.680" E	2	2	32	No	03 October 2022
37	Edi Supriadi	Seureuke Village, Langkahan Sub District, Aceh Utara District, Aceh Province, Indonesia	4° 54' 50.770" N	97° 26' 12.004" E	2	2	33.2	No	05 October 2022
38	Edi Triyoko	Seureuke Village, Langkahan Sub District, Aceh Utara District, Aceh Province, Indonesia	4° 54' 44.583" N	97° 25' 52.207" E	2	2	34.8	No	01 October 2022
39	Etendi Julian	Seureuke Village, Langkahan Sub District, Aceh Utara District, Aceh Province, Indonesia	4° 53' 7.968" N	97° 25' 57.734" E	0.4	0.4	4.8	No	03 October 2022
40	Eka Savrika Manurung	Seureuke Village, Langkahan Sub District, Aceh Utara District, Aceh Province, Indonesia	4° 52' 9.003" N	97° 26' 31.320" E	0.91	0.91	18.7	No	05 October 2022
41	Eko Sasongko	Seureuke Village, Langkahan Sub District, Aceh Utara District, Aceh Province, Indonesia	4° 52' 57.489" N	97° 25' 34.639" E	1	1	15.6	No	01 October 2022
42	Eko Susanto	Seureuke Village, Langkahan Sub District, Aceh Utara District, Aceh Province, Indonesia	4° 53' 33.814" N	97° 26' 19.797" E	2	2	36.8	No	03 October 2022
		Seureuke Village, Langkahan Sub District, Aceh Utara District, Aceh Province, Indonesia	4° 54' 38.570" N	97° 26' 8.276" E	2	2	0	No	03 October 2022
		Seureuke Village, Langkahan Sub District, Aceh Utara District, Aceh Province, Indonesia	4° 54' 50.569" N	97° 26' 2.008" E	2	2	0	No	03 October 2022
		Seureuke Village, Langkahan Sub District, Aceh Utara District, Aceh Province, Indonesia	4° 54' 15.465" N	97° 25' 11.326" E	2	2	32	No	03 October 2022
		Seureuke Village, Langkahan Sub District, Aceh Utara District, Aceh Province, Indonesia	4° 53' 8.704" N	97° 25' 30.846" E	1	1	23.2	No	03 October 2022
43	Endi Triadi	Seureuke Village, Langkahan Sub District, Aceh Utara District, Aceh Province, Indonesia	4° 53' 50.031" N	97° 25' 17.967" E	2	2	29.2	No	10 October 2022
		Seureuke Village, Langkahan Sub District, Aceh Utara District, Aceh Province, Indonesia	4° 54' 2.949" N	97° 25' 18.936" E	2	2	22.8	No	10 October 2022
		Seureuke Village, Langkahan Sub District, Aceh Utara District, Aceh Province, Indonesia	4° 54' 4.328" N	97° 25' 13.412" E	2	2	0	No	10 October 2022
		Seureuke Village, Langkahan Sub District, Aceh Utara District, Aceh Province, Indonesia	4° 54' 11.237" N	97° 25' 17.937" E	2	2	0	No	10 October 2022
44	Erfan	Seureuke Village, Langkahan Sub District, Aceh Utara District, Aceh Province, Indonesia	4° 52' 17.796" N	97° 27' 9.744" E	0.9	0.9	11.8	No	01 October 2022
45	Erwin Mustofa S.P.	Seureuke Village, Langkahan Sub District, Aceh Utara District, Aceh Province, Indonesia	4° 53' 22.691" N	97° 27' 21.756" E	0.8	0.8	14	No	01 October 2022
		Seureuke Village, Langkahan Sub District, Aceh Utara District, Aceh Province, Indonesia	4° 53' 22.074" N	97° 27' 18.744" E	1	1	24	No	01 October 2022
46	Etik Indriyani	Seureuke Village, Langkahan Sub District, Aceh Utara District, Aceh Province, Indonesia	4° 51' 56.757" N	97° 27' 6.227" E	1	1	17.25	No	10 October 2022
		Seureuke Village, Langkahan Sub District, Aceh Utara District, Aceh Province, Indonesia	4° 51' 24.245" N	97° 25' 30.211" E	1	1	18.2	No	10 October 2022
47	Evi Susanti	Seureuke Village, Langkahan Sub District, Aceh Utara District, Aceh Province, Indonesia	4° 54' 57.488" N	97° 25' 55.797" E	2	2	24.8	No	03 October 2022
48	Falmawati	Seureuke Village, Langkahan Sub District, Aceh Utara District, Aceh Province, Indonesia	4° 53' 4.970" N	97° 26' 37.677" E	2	2	0	No	05 October 2022
49	Febi Suryani	Seureuke Village, Langkahan Sub District, Aceh Utara District, Aceh Province, Indonesia	4° 53' 22.421" N	97° 26' 36.176" E	2	2	0	No	10 October 2022
50	Feri Inwansyah	Seureuke Village, Langkahan Sub District, Aceh Utara District, Aceh Province, Indonesia	4° 51' 56.621" N	97° 25' 33.119" E	1	1	19.2	No	10 October 2022
51	Fherdi Priata K	Seureuke Village, Langkahan Sub District, Aceh Utara District, Aceh Province, Indonesia	4° 52' 11.265" N	97° 27' 8.358" E	1	1	0	No	05 October 2022
52	Firmanb	Seureuke Village, Langkahan Sub District, Aceh Utara District, Aceh Province, Indonesia	4° 54' 50.196" N	97° 25' 34.815" E	0.8752	0.8752	18	No	05 October 2022
		Seureuke Village, Langkahan Sub District, Aceh Utara District, Aceh Province, Indonesia	4° 54' 26.877" N	97° 26' 2.720" E	2	2	32	No	05 October 2022
		Seureuke Village, Langkahan Sub District, Aceh Utara District, Aceh Province, Indonesia	4° 54' 20.190" N	97° 26' 13.207" E	2	2	36	No	05 October 2022
		Seureuke Village, Langkahan Sub District, Aceh Utara District, Aceh Province, Indonesia	4° 54' 30.939" N	97° 25' 39.991" E	2	2	0	No	05 October 2022
		Seureuke Village, Langkahan Sub District, Aceh Utara District, Aceh Province, Indonesia	4° 54' 30.809" N	97° 25' 36.716" E	2	2	0	No	05 October 2022
53	Firsta Ananda	Seureuke Village, Langkahan Sub District, Aceh Utara District, Aceh Province, Indonesia	4° 52' 2.341" N	97° 27' 19.382" E	0.85	0.85	16	No	10 October 2022
54	Fitri Kisyani	Seureuke Village, Langkahan Sub District, Aceh Utara District, Aceh Province, Indonesia	4° 52' 18.319" N	97° 25' 52.172" E	0.5	0.5	12.2	No	01 October 2022
55	Fitri Yuliani	Seureuke Village, Langkahan Sub District, Aceh Utara District, Aceh Province, Indonesia	4° 53' 5.584" N	97° 25' 43.574" E	0.5	0.5	14.85	No	10 October 2022
56	Fri Hardiansyah	Seureuke Village, Langkahan Sub District, Aceh Utara District, Aceh Province, Indonesia	4° 54' 3.446" N	97° 26' 7.964" E	2	2	0	No	05 October 2022
57	Gunari	Seureuke Village, Langkahan Sub District, Aceh Utara District, Aceh Province, Indonesia	4° 52' 15.167" N	97° 27' 16.294" E	1	1	16.4	No	10 October 2022
58	Hadi Sucipto	Seureuke Village, Langkahan Sub District, Aceh Utara District, Aceh Province, Indonesia	4° 53' 57.465" N	97° 26' 15.240" E	2	2	34	No	01 October 2022
		Seureuke Village, Langkahan Sub District, Aceh Utara District, Aceh Province, Indonesia	4° 52' 24.432" N	97° 25' 39.413" E	0.556	0.556	0	No	01 October 2022
		Seureuke Village, Langkahan Sub District, Aceh Utara District, Aceh Province, Indonesia	4° 52' 23.322" N	97° 25' 36.997" E	1	1	23	No	01 October 2022
		Seureuke Village, Langkahan Sub District, Aceh Utara District, Aceh Province, Indonesia	4° 52' 22.985" N	97° 25' 34.172" E	1	1	24.3	No	01 October 2022
		Seureuke Village, Langkahan Sub District, Aceh Utara District, Aceh Province, Indonesia	4° 52' 21.958" N	97° 25' 32.030" E	1	1	24.1	No	01 October 2022
		Seureuke Village, Langkahan Sub District, Aceh Utara District, Aceh Province, Indonesia	4° 52' 29.158" N	97° 25' 45.572" E	1	1	0	No	01 October 2022
59	Hamdani	Seureuke Village, Langkahan Sub District, Aceh Utara District, Aceh Province, Indonesia	4° 54' 38.543" N	97° 26' 11.784" E	2	2	40.2	No	06 October 2022
60	Haryanti	Seureuke Village, Langkahan Sub District, Aceh Utara District, Aceh Province, Indonesia	4° 51' 58.860" N	97° 26' 44.238" E	1	1	16.4	No	05 October 2022
61	Haryanto	Seureuke Village, Langkahan Sub District, Aceh Utara District, Aceh Province, Indonesia	4° 52' 19.395" N	97° 25' 38.182" E	0.64	0.64	12.1	No	05 October 2022
62	Huda Handayani	Seureuke Village, Langkahan Sub District, Aceh Utara District, Aceh Province, Indonesia	4° 52' 22.854" N	97° 26' 30.615" E	0.62	0.62	11.4	No	06 October 2022

63	Imam Muslim	Seureuke Village, Langkahan Sub District, Aceh Utara District, Aceh Province, Indonesia	4° 53' 33.822" N	97° 25' 40.147" E	2	2	34	No	05 October 2022
		Seureuke Village, Langkahan Sub District, Aceh Utara District, Aceh Province, Indonesia	4° 53' 52.351" N	97° 26' 7.724" E	0.75	0.75	17	No	05 October 2022
64	Imron Atansa	Seureuke Village, Langkahan Sub District, Aceh Utara District, Aceh Province, Indonesia	4° 53' 38.750" N	97° 25' 58.778" E	1	1	15.2	No	06 October 2022
65	Ishak Gani	Seureuke Village, Langkahan Sub District, Aceh Utara District, Aceh Province, Indonesia	4° 52' 6.205" N	97° 25' 54.099" E	1	1	21	No	05 October 2022
66	Iwan Fauzi	Seureuke Village, Langkahan Sub District, Aceh Utara District, Aceh Province, Indonesia	4° 51' 48.962" N	97° 27' 2.459" E	2	2	38.6	No	05 October 2022
67	Iwan Tusiono	Seureuke Village, Langkahan Sub District, Aceh Utara District, Aceh Province, Indonesia	4° 54' 57.426" N	97° 25' 52.305" E	2	2	30	No	05 October 2022
		Seureuke Village, Langkahan Sub District, Aceh Utara District, Aceh Province, Indonesia	4° 51' 48.008" N	97° 25' 32.754" E	0.7769	0.7769	15	No	05 October 2022
68	Jailani	Seureuke Village, Langkahan Sub District, Aceh Utara District, Aceh Province, Indonesia	4° 51' 59.262" N	97° 26' 33.090" E	0.99	0.99	21.4	No	06 October 2022
69	Jamiat	Seureuke Village, Langkahan Sub District, Aceh Utara District, Aceh Province, Indonesia	4° 52' 5.526" N	97° 25' 39.906" E	1	1	15.3	No	05 October 2022
		Seureuke Village, Langkahan Sub District, Aceh Utara District, Aceh Province, Indonesia	4° 52' 7.396" N	97° 25' 39.145" E	1	1	15.6	No	05 October 2022
		Seureuke Village, Langkahan Sub District, Aceh Utara District, Aceh Province, Indonesia	4° 52' 4.844" N	97° 25' 35.992" E	1	1	15	No	05 October 2022
		Seureuke Village, Langkahan Sub District, Aceh Utara District, Aceh Province, Indonesia	4° 52' 8.860" N	97° 25' 28.519" E	0.559	0.559	0	No	05 October 2022
70	Jamuri	Seureuke Village, Langkahan Sub District, Aceh Utara District, Aceh Province, Indonesia	4° 52' 40.671" N	97° 26' 11.864" E	2	2	31.1	No	06 October 2022
		Seureuke Village, Langkahan Sub District, Aceh Utara District, Aceh Province, Indonesia	4° 52' 56.636" N	97° 26' 30.006" E	0.4789	0.4789	9.2	No	06 October 2022
		Seureuke Village, Langkahan Sub District, Aceh Utara District, Aceh Province, Indonesia	4° 52' 56.473" N	97° 26' 31.592" E	0.8349	0.8349	15	No	06 October 2022
71	Joko	Seureuke Village, Langkahan Sub District, Aceh Utara District, Aceh Province, Indonesia	4° 55' 2.889" N	97° 25' 51.088" E	2	2	32	No	10 October 2022
72	Joni	Seureuke Village, Langkahan Sub District, Aceh Utara District, Aceh Province, Indonesia	4° 53' 35.035" N	97° 25' 46.732" E	1	1	16.4	No	06 October 2022
		Seureuke Village, Langkahan Sub District, Aceh Utara District, Aceh Province, Indonesia	4° 51' 15.889" N	97° 25' 4.234" E	1	1	15.6	No	06 October 2022
73	Juli Mawaddah	Seureuke Village, Langkahan Sub District, Aceh Utara District, Aceh Province, Indonesia	4° 53' 27.068" N	97° 27' 18.805" E	2	2	0	No	10 October 2022
74	Juwariyah	Seureuke Village, Langkahan Sub District, Aceh Utara District, Aceh Province, Indonesia	4° 52' 55.681" N	97° 27' 14.488" E	0.25	0.25	5	No	10 October 2022
75	Karim	Seureuke Village, Langkahan Sub District, Aceh Utara District, Aceh Province, Indonesia	4° 53' 7.536" N	97° 26' 40.873" E	2	2	34	No	05 October 2022
		Seureuke Village, Langkahan Sub District, Aceh Utara District, Aceh Province, Indonesia	4° 53' 8.956" N	97° 26' 35.393" E	2	2	34	No	05 October 2022
76	Karino	Seureuke Village, Langkahan Sub District, Aceh Utara District, Aceh Province, Indonesia	4° 52' 51.473" N	97° 24' 57.371" E	0.52	0.52	9.8	No	06 October 2022
77	Karlitosari	Seureuke Village, Langkahan Sub District, Aceh Utara District, Aceh Province, Indonesia	4° 53' 49.290" N	97° 27' 1.371" E	2	2	0	No	06 October 2022
78	Khalik Maulzar	Seureuke Village, Langkahan Sub District, Aceh Utara District, Aceh Province, Indonesia	4° 52' 48.218" N	97° 25' 50.801" E	2	2	28.7	No	10 October 2022
		Seureuke Village, Langkahan Sub District, Aceh Utara District, Aceh Province, Indonesia	4° 52' 21.901" N	97° 25' 40.935" E	0.45	0.45	6.9	No	10 October 2022
79	Kiswanto	Seureuke Village, Langkahan Sub District, Aceh Utara District, Aceh Province, Indonesia	4° 52' 39.710" N	97° 26' 53.754" E	1	1	25.25	No	06 October 2022
80	Kiswanto	Seureuke Village, Langkahan Sub District, Aceh Utara District, Aceh Province, Indonesia	4° 52' 11.078" N	97° 26' 13.869" E	0.83	0.83	12.2	No	05 October 2022
81	Komedi	Seureuke Village, Langkahan Sub District, Aceh Utara District, Aceh Province, Indonesia	4° 52' 48.804" N	97° 25' 42.866" E	2	2	0	No	03 October 2022
82	Kusmianto	Seureuke Village, Langkahan Sub District, Aceh Utara District, Aceh Province, Indonesia	4° 51' 17.348" N	97° 26' 26.218" E	0.42	0.42	11.2	No	03 October 2022
83	Kusnin	Seureuke Village, Langkahan Sub District, Aceh Utara District, Aceh Province, Indonesia	4° 52' 46.863" N	97° 27' 48.701" E	2	2	26.2	No	03 October 2022
84	Kusnin	Seureuke Village, Langkahan Sub District, Aceh Utara District, Aceh Province, Indonesia	4° 52' 46.836" N	97° 26' 37.742" E	1	1	21.2	No	10 October 2022
		Seureuke Village, Langkahan Sub District, Aceh Utara District, Aceh Province, Indonesia	4° 52' 48.601" N	97° 26' 35.279" E	1	1	17.5	No	10 October 2022
85	Kuslono	Seureuke Village, Langkahan Sub District, Aceh Utara District, Aceh Province, Indonesia	4° 52' 16.241" N	97° 26' 29.017" E	1	1	22.4	No	10 October 2022
86	Kuswanto	Seureuke Village, Langkahan Sub District, Aceh Utara District, Aceh Province, Indonesia	4° 51' 53.224" N	97° 26' 48.355" E	1	1	20.3	No	03 October 2022
87	Kuwatno	Seureuke Village, Langkahan Sub District, Aceh Utara District, Aceh Province, Indonesia	4° 54' 43.088" N	97° 25' 37.530" E	2	2	0	No	03 October 2022
88	Lasimin	Seureuke Village, Langkahan Sub District, Aceh Utara District, Aceh Province, Indonesia	4° 53' 18.847" N	97° 25' 45.840" E	0.93	0.93	16	No	03 October 2022
89	Listuk	Seureuke Village, Langkahan Sub District, Aceh Utara District, Aceh Province, Indonesia	4° 52' 56.484" N	97° 27' 22.910" E	1	1	23.3	No	03 October 2022
90	Liswati	Seureuke Village, Langkahan Sub District, Aceh Utara District, Aceh Province, Indonesia	4° 53' 21.898" N	97° 27' 15.144" E	1	1	14.2	No	03 October 2022
91	Lusy Liyani	Seureuke Village, Langkahan Sub District, Aceh Utara District, Aceh Province, Indonesia	4° 54' 17.758" N	97° 25' 37.399" E	2	2	0	No	03 October 2022
92	M Abdurrahman	Seureuke Village, Langkahan Sub District, Aceh Utara District, Aceh Province, Indonesia	4° 53' 17.316" N	97° 26' 56.998" E	1	1	17.2	No	03 October 2022
		Seureuke Village, Langkahan Sub District, Aceh Utara District, Aceh Province, Indonesia	4° 53' 18.768" N	97° 26' 58.984" E	0.5	0.5	9.4	No	03 October 2022
		Seureuke Village, Langkahan Sub District, Aceh Utara District, Aceh Province, Indonesia	4° 53' 19.187" N	97° 27' 2.540" E	0.95	0.95	21.2	No	03 October 2022
		Seureuke Village, Langkahan Sub District, Aceh Utara District, Aceh Province, Indonesia	4° 53' 25.309" N	97° 26' 7.771" E	2	2	0	No	03 October 2022
		Seureuke Village, Langkahan Sub District, Aceh Utara District, Aceh Province, Indonesia	4° 54' 3.416" N	97° 26' 10.163" E	2	2	0	No	03 October 2022
		Seureuke Village, Langkahan Sub District, Aceh Utara District, Aceh Province, Indonesia	4° 53' 58.750" N	97° 25' 59.985" E	2	2	0	No	03 October 2022
		Seureuke Village, Langkahan Sub District, Aceh Utara District, Aceh Province, Indonesia	4° 54' 2.009" N	97° 25' 36.629" E	2	2	0	No	03 October 2022
		Seureuke Village, Langkahan Sub District, Aceh Utara District, Aceh Province, Indonesia	4° 53' 42.915" N	97° 24' 56.064" E	2	2	0	No	03 October 2022
93	M Ai	Seureuke Village, Langkahan Sub District, Aceh Utara District, Aceh Province, Indonesia	4° 51' 58.487" N	97° 27' 12.625" E	0.2541	0.2541	4.6	No	06 October 2022
		Seureuke Village, Langkahan Sub District, Aceh Utara District, Aceh Province, Indonesia	4° 52' 33.902" N	97° 27' 18.721" E	0.938	0.938	17.25	No	06 October 2022
		Seureuke Village, Langkahan Sub District, Aceh Utara District, Aceh Province, Indonesia	4° 53' 36.224" N	97° 26' 23.214" E	2	2	0	No	06 October 2022
94	M Kusin	Seureuke Village, Langkahan Sub District, Aceh Utara District, Aceh Province, Indonesia	4° 51' 48.320" N	97° 26' 28.745" E	2	2	32.4	No	06 October 2022
95	M Nur	Seureuke Village, Langkahan Sub District, Aceh Utara District, Aceh Province, Indonesia	4° 51' 53.042" N	97° 25' 45.797" E	1	1	19.8	No	06 October 2022
96	M Yunus Lubis	Seureuke Village, Langkahan Sub District, Aceh Utara District, Aceh Province, Indonesia	4° 54' 11.738" N	97° 25' 6.099" E	2	2	0	No	06 October 2022
97	M Zamzuri	Seureuke Village, Langkahan Sub District, Aceh Utara District, Aceh Province, Indonesia	4° 53' 9.768" N	97° 26' 1.219" E	1	1	0	No	08 October 2022
98	M. Romain	Seureuke Village, Langkahan Sub District, Aceh Utara District, Aceh Province, Indonesia	4° 52' 7.503" N	97° 26' 37.786" E	1	1	20.25	No	03 October 2022
99	Mahmur	Seureuke Village, Langkahan Sub District, Aceh Utara District, Aceh Province, Indonesia	4° 53' 23.485" N	97° 26' 49.073" E	2	2	34	No	03 October 2022
100	Makmur Golur	Seureuke Village, Langkahan Sub District, Aceh Utara District, Aceh Province, Indonesia	4° 51' 46.349" N	97° 25' 45.349" E	1	1	21.8	No	03 October 2022

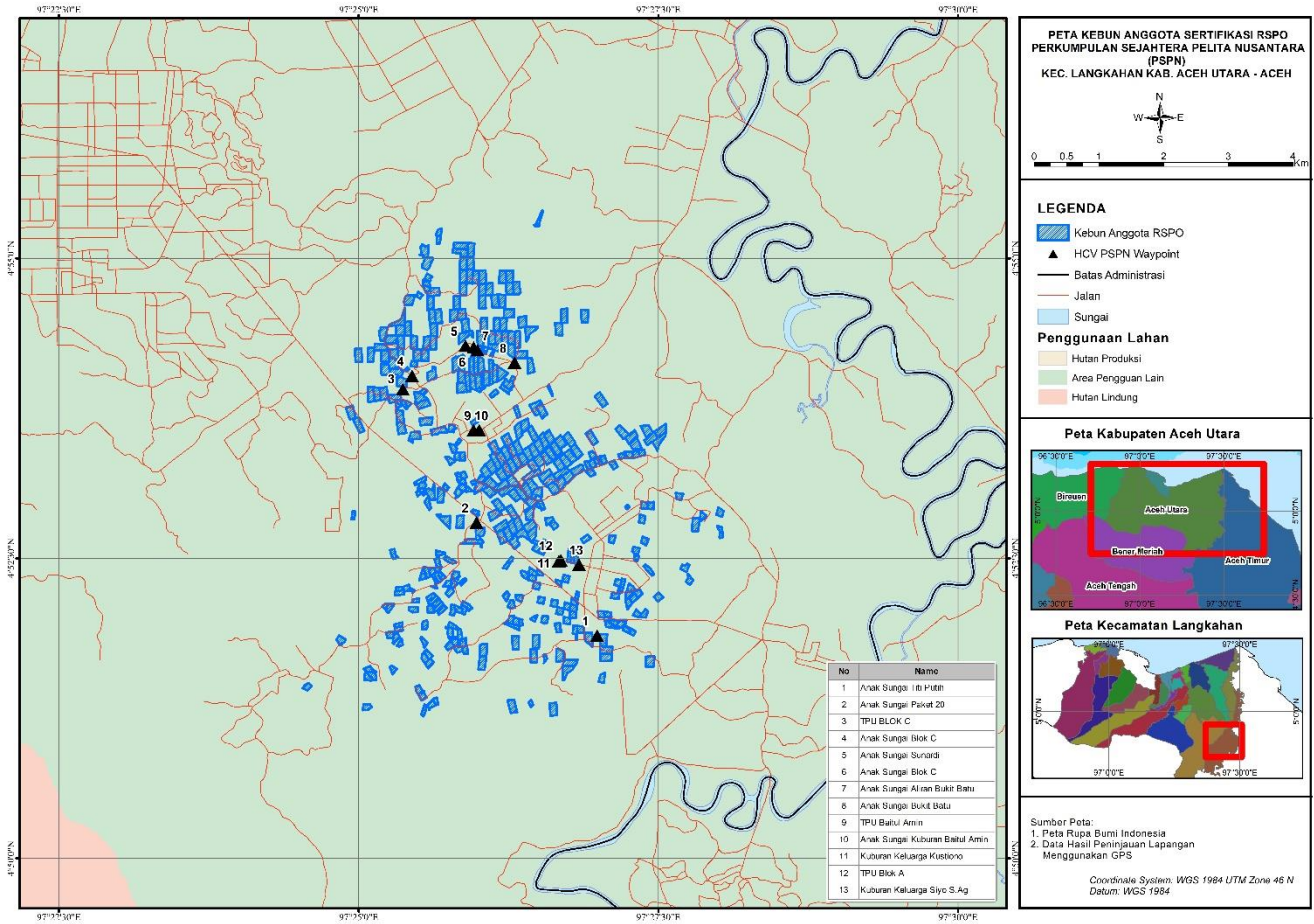
101	Mami Sumarsh	Seureuke Village, Langkahan Sub District, Aceh Utara District, Aceh Province, Indonesia	4° 54' 57.352" N	97° 25' 34.330" E	2	2	32.7	No	03 October 2022
102	Manda Adinda	Seureuke Village, Langkahan Sub District, Aceh Utara District, Aceh Province, Indonesia	4° 52' 20.110" N	97° 26' 26.895" E	1	1	14.4	No	08 October 2022
		Seureuke Village, Langkahan Sub District, Aceh Utara District, Aceh Province, Indonesia	4° 52' 23.170" N	97° 26' 27.040" E	1	1	15	No	08 October 2022
103	Mardian	Seureuke Village, Langkahan Sub District, Aceh Utara District, Aceh Province, Indonesia	4° 51' 49.704" N	97° 26' 55.148" E	2	2	34.5	No	06 October 2022
104	Mariani	Seureuke Village, Langkahan Sub District, Aceh Utara District, Aceh Province, Indonesia	4° 53' 25.878" N	97° 26' 30.244" E	2	2	0	No	06 October 2022
		Seureuke Village, Langkahan Sub District, Aceh Utara District, Aceh Province, Indonesia	4° 53' 58.311" N	97° 25' 54.510" E	2	2	0	No	06 October 2022
105	Marmi	Seureuke Village, Langkahan Sub District, Aceh Utara District, Aceh Province, Indonesia	4° 52' 12.364" N	97° 27' 20.023" E	1	1	15.3	No	06 October 2022
106	Mela Anjani	Seureuke Village, Langkahan Sub District, Aceh Utara District, Aceh Province, Indonesia	4° 52' 47.140" N	97° 26' 19.871" E	2	2	34	No	06 October 2022
107	Mhd Yusuf	Seureuke Village, Langkahan Sub District, Aceh Utara District, Aceh Province, Indonesia	4° 54' 29.335" N	97° 25' 20.026" E	2	2	0	No	06 October 2022
		Seureuke Village, Langkahan Sub District, Aceh Utara District, Aceh Province, Indonesia	4° 52' 4.395" N	97° 25' 27.361" E	1	1	19.2	No	06 October 2022
108	Midun	Seureuke Village, Langkahan Sub District, Aceh Utara District, Aceh Province, Indonesia	4° 54' 6.170" N	97° 26' 26.133" E	2	2	36.8	No	06 October 2022
109	Mik Saputra	Seureuke Village, Langkahan Sub District, Aceh Utara District, Aceh Province, Indonesia	4° 51' 15.944" N	97° 26' 16.930" E	2	2	36.8	No	06 October 2022
110	Muda Saki	Seureuke Village, Langkahan Sub District, Aceh Utara District, Aceh Province, Indonesia	4° 51' 44.163" N	97° 27' 3.790" E	2	2	31.2	No	06 October 2022
111	Mugi Raharjo	Seureuke Village, Langkahan Sub District, Aceh Utara District, Aceh Province, Indonesia	4° 51' 59.897" N	97° 26' 27.777" E	0.5	0.5	13.1	No	06 October 2022
112	Muhammad	Seureuke Village, Langkahan Sub District, Aceh Utara District, Aceh Province, Indonesia	4° 53' 2.405" N	97° 26' 29.062" E	2	2	0	No	06 October 2022
113	Muhammad Asrof	Seureuke Village, Langkahan Sub District, Aceh Utara District, Aceh Province, Indonesia	4° 51' 52.239" N	97° 25' 50.601" E	1	1	21.6	No	06 October 2022
114	Muhammad Chamdani	Seureuke Village, Langkahan Sub District, Aceh Utara District, Aceh Province, Indonesia	4° 53' 54.473" N	97° 26' 1.124" E	0.55	0.55	9.6	No	08 October 2022
		Seureuke Village, Langkahan Sub District, Aceh Utara District, Aceh Province, Indonesia	4° 53' 8.482" N	97° 26' 17.337" E	2	2	0	No	08 October 2022
		Seureuke Village, Langkahan Sub District, Aceh Utara District, Aceh Province, Indonesia	4° 53' 20.035" N	97° 26' 11.312" E	2	2	0	No	08 October 2022
		Seureuke Village, Langkahan Sub District, Aceh Utara District, Aceh Province, Indonesia	4° 51' 47.968" N	97° 25' 50.425" E	0.36	0.36	9.2	No	08 October 2022
		Seureuke Village, Langkahan Sub District, Aceh Utara District, Aceh Province, Indonesia	4° 51' 50.239" N	97° 25' 47.262" E	0.5	0.5	9.7	No	08 October 2022
		Seureuke Village, Langkahan Sub District, Aceh Utara District, Aceh Province, Indonesia	4° 51' 47.894" N	97° 25' 47.728" E	1	1	21.2	No	08 October 2022
115	Muhammad Erwan	Seureuke Village, Langkahan Sub District, Aceh Utara District, Aceh Province, Indonesia	4° 51' 25.722" N	97° 24' 34.187" E	0.86	0.86	0	No	06 October 2022
116	Muhammad Falah Husada	Seureuke Village, Langkahan Sub District, Aceh Utara District, Aceh Province, Indonesia	4° 52' 10.094" N	97° 26' 20.452" E	0.95	0.95	17.2	No	06 October 2022
117	Muhammad Husin	Seureuke Village, Langkahan Sub District, Aceh Utara District, Aceh Province, Indonesia	4° 52' 14.774" N	97° 25' 24.821" E	1	1	16	No	08 October 2022
118	Muhammad Ikhwan	Seureuke Village, Langkahan Sub District, Aceh Utara District, Aceh Province, Indonesia	4° 54' 39.122" N	97° 25' 25.365" E	2	2	0	No	08 October 2022
119	Muhammad Nasoha	Seureuke Village, Langkahan Sub District, Aceh Utara District, Aceh Province, Indonesia	4° 52' 11.367" N	97° 27' 15.503" E	0.9879	0.9879	13.2	No	08 October 2022
120	Muhammad Saleh	Seureuke Village, Langkahan Sub District, Aceh Utara District, Aceh Province, Indonesia	4° 53' 2.232" N	97° 26' 21.379" E	2	2	32.8	No	06 October 2022
121	Muhammad Zulfahmi	Seureuke Village, Langkahan Sub District, Aceh Utara District, Aceh Province, Indonesia	4° 53' 51.844" N	97° 25' 6.254" E	2	2	0	No	08 October 2022
122	Mukhter Efendi	Seureuke Village, Langkahan Sub District, Aceh Utara District, Aceh Province, Indonesia	4° 53' 30.589" N	97° 27' 16.510" E	2	2	0	No	06 October 2022
123	Mukiman	Seureuke Village, Langkahan Sub District, Aceh Utara District, Aceh Province, Indonesia	4° 52' 17.637" N	97° 26' 40.160" E	0.59	0.59	11.2	No	06 October 2022
124	Mukminah	Seureuke Village, Langkahan Sub District, Aceh Utara District, Aceh Province, Indonesia	4° 52' 7.561" N	97° 27' 15.119" E	1	1	15.2	No	06 October 2022
125	Mukromin	Seureuke Village, Langkahan Sub District, Aceh Utara District, Aceh Province, Indonesia	4° 51' 41.828" N	97° 25' 34.815" E	1	1	0	No	06 October 2022
		Seureuke Village, Langkahan Sub District, Aceh Utara District, Aceh Province, Indonesia	4° 51' 40.293" N	97° 25' 33.147" E	1	1	12	No	06 October 2022
		Seureuke Village, Langkahan Sub District, Aceh Utara District, Aceh Province, Indonesia	4° 51' 37.437" N	97° 25' 35.278" E	1	1	10.2	No	06 October 2022
		Seureuke Village, Langkahan Sub District, Aceh Utara District, Aceh Province, Indonesia	4° 53' 4.608" N	97° 25' 55.087" E	0.5625	0.5625	14.4	No	06 October 2022
126	Munhahar	Seureuke Village, Langkahan Sub District, Aceh Utara District, Aceh Province, Indonesia	4° 53' 30.340" N	97° 26' 56.660" E	2	2	0	No	08 October 2022
127	Murni	Seureuke Village, Langkahan Sub District, Aceh Utara District, Aceh Province, Indonesia	4° 51' 44.596" N	97° 25' 49.751" E	1	1	21	No	08 October 2022
128	Musliadi	Seureuke Village, Langkahan Sub District, Aceh Utara District, Aceh Province, Indonesia	4° 53' 29.250" N	97° 26' 45.486" E	2	2	32	No	08 October 2022
		Seureuke Village, Langkahan Sub District, Aceh Utara District, Aceh Province, Indonesia	4° 53' 33.099" N	97° 27' 11.902" E	2	2	0	No	08 October 2022
129	Muslim	Seureuke Village, Langkahan Sub District, Aceh Utara District, Aceh Province, Indonesia	4° 53' 47.215" N	97° 25' 24.720" E	0.51	0.51	9.2	No	08 October 2022
130	Muslim	Seureuke Village, Langkahan Sub District, Aceh Utara District, Aceh Province, Indonesia	4° 52' 37.740" N	97° 26' 29.957" E	0.8784	0.8784	15	No	06 October 2022
		Seureuke Village, Langkahan Sub District, Aceh Utara District, Aceh Province, Indonesia	4° 52' 36.921" N	97° 26' 33.501" E	0.9554	0.9554	15	No	06 October 2022
		Seureuke Village, Langkahan Sub District, Aceh Utara District, Aceh Province, Indonesia	4° 52' 33.736" N	97° 26' 31.851" E	1	1	19.8	No	06 October 2022
		Seureuke Village, Langkahan Sub District, Aceh Utara District, Aceh Province, Indonesia	4° 52' 35.065" N	97° 26' 29.086" E	1	1	15	No	06 October 2022
		Seureuke Village, Langkahan Sub District, Aceh Utara District, Aceh Province, Indonesia	4° 52' 46.009" N	97° 26' 25.729" E	2	2	0	No	06 October 2022
		Seureuke Village, Langkahan Sub District, Aceh Utara District, Aceh Province, Indonesia	4° 52' 42.099" N	97° 26' 26.768" E	2	2	0	No	06 October 2022
131	Muzakir	Seureuke Village, Langkahan Sub District, Aceh Utara District, Aceh Province, Indonesia	4° 54' 22.720" N	97° 26' 26.004" E	2	2	0	No	08 October 2022
132	Nafsiyah	Seureuke Village, Langkahan Sub District, Aceh Utara District, Aceh Province, Indonesia	4° 53' 22.108" N	97° 26' 24.936" E	2	2	0	No	10 October 2022
133	Ngatini	Seureuke Village, Langkahan Sub District, Aceh Utara District, Aceh Province, Indonesia	4° 54' 12.086" N	97° 26' 6.699" E	0.25	0.25	4.8	No	10 October 2022
134	Ngafiran	Seureuke Village, Langkahan Sub District, Aceh Utara District, Aceh Province, Indonesia	4° 51' 56.088" N	97° 26' 16.853" E	1	1	15.3	No	08 October 2022
		Seureuke Village, Langkahan Sub District, Aceh Utara District, Aceh Province, Indonesia	4° 51' 47.865" N	97° 26' 18.495" E	2	2	33	No	08 October 2022
135	Ngatno	Seureuke Village, Langkahan Sub District, Aceh Utara District, Aceh Province, Indonesia	4° 51' 34.470" N	97° 25' 5.470" E	1	1	15	No	10 October 2022
		Seureuke Village, Langkahan Sub District, Aceh Utara District, Aceh Province, Indonesia	4° 51' 31.253" N	97° 25' 6.769" E	1	1	17	No	10 October 2022
		Seureuke Village, Langkahan Sub District, Aceh Utara District, Aceh Province, Indonesia	4° 52' 20.441" N	97° 25' 39.540" E	0.86	0.86	0	No	10 October 2022
136	Nur Ansari	Seureuke Village, Langkahan Sub District, Aceh Utara District, Aceh Province, Indonesia	4° 51' 16.903" N	97° 25' 36.361" E	1	1	15	No	08 October 2022
		Seureuke Village, Langkahan Sub District, Aceh Utara District, Aceh Province, Indonesia	4° 51' 18.493" N	97° 25' 38.557" E	0.5642	0.5642	10.6	No	08 October 2022
137	Nur Anyas	Seureuke Village, Langkahan Sub District, Aceh Utara District, Aceh Province, Indonesia	4° 52' 30.190" N	97° 27' 18.996" E	0.5175	0.5175	3.4	No	03 October 2022
138	Nur Istiana	Seureuke Village, Langkahan Sub District, Aceh Utara District, Aceh Province, Indonesia	4° 54' 23.895" N	97° 25' 20.863" E	2	2	0	No	03 October 2022

139	Nur Supardi	Seureuke Village, Langkahan Sub District, Aceh Utara District, Aceh Province, Indonesia	4° 54' 47.222" N	97° 25' 34.010" E	0.83	0.83	19.2	No	03 October 2022
		Seureuke Village, Langkahan Sub District, Aceh Utara District, Aceh Province, Indonesia	4° 54' 44.824" N	97° 25' 34.036" E	0.7	0.7	14	No	03 October 2022
140	Nuraini	Seureuke Village, Langkahan Sub District, Aceh Utara District, Aceh Province, Indonesia	4° 53' 33.606" N	97° 27' 24.262" E	2	2	0	No	03 October 2022
141	Nurdin	Seureuke Village, Langkahan Sub District, Aceh Utara District, Aceh Province, Indonesia	4° 53' 46.295" N	97° 25' 19.735" E	0.5112	0.5112	10.4	No	08 October 2022
		Seureuke Village, Langkahan Sub District, Aceh Utara District, Aceh Province, Indonesia	4° 53' 16.727" N	97° 27' 7.562" E	1	1	22.7	No	08 October 2022
142	Nurwayati	Seureuke Village, Langkahan Sub District, Aceh Utara District, Aceh Province, Indonesia	4° 53' 14.244" N	97° 26' 49.580" E	2	2	21.2	No	10 October 2022
143	Nurma Sari	Seureuke Village, Langkahan Sub District, Aceh Utara District, Aceh Province, Indonesia	4° 52' 4.250" N	97° 25' 41.664" E	1	1	12.6	No	08 October 2022
		Seureuke Village, Langkahan Sub District, Aceh Utara District, Aceh Province, Indonesia	4° 52' 10.457" N	97° 25' 36.277" E	1	1	9.2	No	08 October 2022
144	Nursaudah	Seureuke Village, Langkahan Sub District, Aceh Utara District, Aceh Province, Indonesia	4° 54' 0.737" N	97° 25' 51.474" E	2	2	0	No	07 October 2022
145	Nurul Lismayati	Seureuke Village, Langkahan Sub District, Aceh Utara District, Aceh Province, Indonesia	4° 52' 38.674" N	97° 27' 23.172" E	0.96	0.96	13.7	No	10 October 2022
146	Nurul Roby Irfani	Seureuke Village, Langkahan Sub District, Aceh Utara District, Aceh Province, Indonesia	4° 54' 31.082" N	97° 26' 53.042" E	2	2	0	No	10 October 2022
147	Patmono	Seureuke Village, Langkahan Sub District, Aceh Utara District, Aceh Province, Indonesia	4° 53' 45.210" N	97° 26' 28.532" E	2	2	0	No	07 October 2022
148	Ponaji	Seureuke Village, Langkahan Sub District, Aceh Utara District, Aceh Province, Indonesia	4° 54' 10.710" N	97° 25' 20.974" E	2	2	32	No	07 October 2022
149	Ponimin	Seureuke Village, Langkahan Sub District, Aceh Utara District, Aceh Province, Indonesia	4° 53' 28.043" N	97° 26' 40.982" E	2	2	23.2	No	08 October 2022
		Seureuke Village, Langkahan Sub District, Aceh Utara District, Aceh Province, Indonesia	4° 53' 27.769" N	97° 25' 49.739" E	0.4399	0.4399	6.9	No	08 October 2022
		Seureuke Village, Langkahan Sub District, Aceh Utara District, Aceh Province, Indonesia	4° 53' 2.941" N	97° 25' 35.988" E	2	2	25.3	No	08 October 2022
150	Puji Iskandar	Seureuke Village, Langkahan Sub District, Aceh Utara District, Aceh Province, Indonesia	4° 53' 25.543" N	97° 26' 19.729" E	2	2	0	No	10 October 2022
151	Puji Lestari	Seureuke Village, Langkahan Sub District, Aceh Utara District, Aceh Province, Indonesia	4° 52' 16.352" N	97° 27' 11.978" E	1	1	6	No	07 October 2022
152	Raja Abdurais	Seureuke Village, Langkahan Sub District, Aceh Utara District, Aceh Province, Indonesia	4° 52' 37.940" N	97° 25' 57.173" E	2	2	32.8	No	10 October 2022
153	Raji	Seureuke Village, Langkahan Sub District, Aceh Utara District, Aceh Province, Indonesia	4° 54' 11.588" N	97° 25' 33.209" E	2	2	32	No	01 October 2022
154	Ramadhan	Seureuke Village, Langkahan Sub District, Aceh Utara District, Aceh Province, Indonesia	4° 51' 56.175" N	97° 25' 46.577" E	1	1	20.8	No	01 October 2022
155	Rani Faria Dewi	Seureuke Village, Langkahan Sub District, Aceh Utara District, Aceh Province, Indonesia	4° 52' 56.350" N	97° 27' 26.198" E	1	1	17.2	No	07 October 2022
156	Ridho Santoso	Seureuke Village, Langkahan Sub District, Aceh Utara District, Aceh Province, Indonesia	4° 52' 8.848" N	97° 25' 37.408" E	1	1	12.6	No	07 October 2022
157	Ridwan	Seureuke Village, Langkahan Sub District, Aceh Utara District, Aceh Province, Indonesia	4° 51' 47.909" N	97° 25' 52.155" E	1	1	20	No	10 October 2022
158	Riki Wahyu	Seureuke Village, Langkahan Sub District, Aceh Utara District, Aceh Province, Indonesia	4° 52' 38.101" N	97° 26' 18.007" E	2	2	25.2	No	07 October 2022
		Seureuke Village, Langkahan Sub District, Aceh Utara District, Aceh Province, Indonesia	4° 53' 11.359" N	97° 26' 33.234" E	2	2	0	No	07 October 2022
159	Rina	Seureuke Village, Langkahan Sub District, Aceh Utara District, Aceh Province, Indonesia	4° 53' 16.360" N	97° 26' 16.816" E	2	2	0	No	01 October 2022
160	Rita Ashriah	Seureuke Village, Langkahan Sub District, Aceh Utara District, Aceh Province, Indonesia	4° 53' 19.627" N	97° 26' 22.334" E	2	2	0	No	01 October 2022
161	Rokim	Seureuke Village, Langkahan Sub District, Aceh Utara District, Aceh Province, Indonesia	4° 51' 30.823" N	97° 25' 4.916" E	1	1	15.8	No	07 October 2022
162	Rokimah	Seureuke Village, Langkahan Sub District, Aceh Utara District, Aceh Province, Indonesia	4° 52' 32.131" N	97° 25' 17.613" E	1	1	24	No	07 October 2022
163	Romadin	Seureuke Village, Langkahan Sub District, Aceh Utara District, Aceh Province, Indonesia	4° 53' 18.587" N	97° 26' 30.420" E	2	2	38	No	08 October 2022
		Seureuke Village, Langkahan Sub District, Aceh Utara District, Aceh Province, Indonesia	4° 54' 6.962" N	97° 25' 48.531" E	2	2	24	No	08 October 2022
		Seureuke Village, Langkahan Sub District, Aceh Utara District, Aceh Province, Indonesia	4° 53' 18.997" N	97° 26' 43.328" E	2	2	32.2	No	08 October 2022
		Seureuke Village, Langkahan Sub District, Aceh Utara District, Aceh Province, Indonesia	4° 53' 20.946" N	97° 26' 46.016" E	2	2	31.2	No	08 October 2022
		Seureuke Village, Langkahan Sub District, Aceh Utara District, Aceh Province, Indonesia	4° 53' 58.188" N	97° 25' 21.459" E	2	2	0	No	08 October 2022
		Seureuke Village, Langkahan Sub District, Aceh Utara District, Aceh Province, Indonesia	4° 54' 37.685" N	97° 25' 35.909" E	2	2	30.1	No	08 October 2022
164	Roni Indrawan	Seureuke Village, Langkahan Sub District, Aceh Utara District, Aceh Province, Indonesia	4° 54' 45.110" N	97° 26' 19.004" E	1	1	0	No	08 October 2022
165	Ruadi	Seureuke Village, Langkahan Sub District, Aceh Utara District, Aceh Province, Indonesia	4° 51' 33.088" N	97° 26' 44.573" E	2	2	24	No	08 October 2022
166	Rubiyanti	Seureuke Village, Langkahan Sub District, Aceh Utara District, Aceh Province, Indonesia	4° 54' 20.279" N	97° 26' 6.708" E	2	2	0	No	04 October 2022
167	Ruchi Sania	Seureuke Village, Langkahan Sub District, Aceh Utara District, Aceh Province, Indonesia	4° 54' 31.264" N	97° 26' 42.913" E	2	2	24	No	02 October 2022
168	Rugilo	Seureuke Village, Langkahan Sub District, Aceh Utara District, Aceh Province, Indonesia	4° 55' 3.597" N	97° 25' 32.912" E	2	2	28.4	No	05 October 2022
		Seureuke Village, Langkahan Sub District, Aceh Utara District, Aceh Province, Indonesia	4° 54' 41.515" N	97° 25' 30.419" E	0.5421	0.5421	9.2	No	05 October 2022
169	Rujlo	Seureuke Village, Langkahan Sub District, Aceh Utara District, Aceh Province, Indonesia	4° 53' 30.452" N	97° 26' 35.333" E	2	2	26.8	No	08 October 2022
		Seureuke Village, Langkahan Sub District, Aceh Utara District, Aceh Province, Indonesia	4° 53' 2.432" N	97° 25' 29.996" E	0.37	0.37	5.6	No	08 October 2022
170	Rumiah	Seureuke Village, Langkahan Sub District, Aceh Utara District, Aceh Province, Indonesia	4° 53' 10.657" N	97° 25' 50.067" E	0.7662	0.7662	12.2	No	05 October 2022
		Seureuke Village, Langkahan Sub District, Aceh Utara District, Aceh Province, Indonesia	4° 53' 11.495" N	97° 25' 52.450" E	0.7752	0.7752	13.2	No	05 October 2022
171	Saban	Seureuke Village, Langkahan Sub District, Aceh Utara District, Aceh Province, Indonesia	4° 54' 51.069" N	97° 26' 15.479" E	2	2	0	No	02 October 2022
172	Sadiyo	Seureuke Village, Langkahan Sub District, Aceh Utara District, Aceh Province, Indonesia	4° 53' 6.626" N	97° 25' 31.851" E	0.97	0.97	14.85	No	08 October 2022
		Seureuke Village, Langkahan Sub District, Aceh Utara District, Aceh Province, Indonesia	4° 53' 3.422" N	97° 25' 31.477" E	0.61	0.61	12.75	No	08 October 2022
		Seureuke Village, Langkahan Sub District, Aceh Utara District, Aceh Province, Indonesia	4° 54' 24.976" N	97° 25' 24.663" E	2	2	0	No	08 October 2022
173	Salimman	Seureuke Village, Langkahan Sub District, Aceh Utara District, Aceh Province, Indonesia	4° 53' 12.794" N	97° 26' 56.176" E	1	1	19.8	No	06 October 2022
174	Samidi	Seureuke Village, Langkahan Sub District, Aceh Utara District, Aceh Province, Indonesia	4° 53' 54.584" N	97° 26' 13.324" E	0.9878	0.9878	15.9	No	06 October 2022
175	Samidjo	Seureuke Village, Langkahan Sub District, Aceh Utara District, Aceh Province, Indonesia	4° 52' 5.148" N	97° 25' 15.530" E	1	1	15	No	08 October 2022
176	Sarjono	Seureuke Village, Langkahan Sub District, Aceh Utara District, Aceh Province, Indonesia	4° 52' 52.572" N	97° 26' 25.920" E	2	2	25.2	No	06 October 2022
177	Sarjono B	Seureuke Village, Langkahan Sub District, Aceh Utara District, Aceh Province, Indonesia	4° 52' 21.440" N	97° 25' 48.572" E	1	1	18.4	No	06 October 2022
178	Sarman	Seureuke Village, Langkahan Sub District, Aceh Utara District, Aceh Province, Indonesia	4° 54' 37.834" N	97° 25' 49.156" E	2	2	31.8	No	06 October 2022
179	Sarmani	Seureuke Village, Langkahan Sub District, Aceh Utara District, Aceh Province, Indonesia	4° 54' 11.475" N	97° 24' 59.924" E	2	2	0	No	06 October 2022
180	Sarmin	Seureuke Village, Langkahan Sub District, Aceh Utara District, Aceh Province, Indonesia	4° 53' 24.263" N	97° 26' 16.747" E	2	2	32	No	06 October 2022
181	Sarwoto	Seureuke Village, Langkahan Sub District, Aceh Utara District, Aceh Province, Indonesia	4° 52' 9.952" N	97° 27' 17.537" E	1	1	9.2	No	06 October 2022

182	Semangat Tarigan	Seureuke Village, Langkahan Sub District, Aceh Utara District, Aceh Province, Indonesia	4° 52' 57.001" N	97° 26' 25.919" E	2	2	0	No	06 October 2022
183	Shalfisaurani	Seureuke Village, Langkahan Sub District, Aceh Utara District, Aceh Province, Indonesia	4° 54' 51.001" N	97° 25' 52.206" E	2	2	30.8	No	06 October 2022
		Seureuke Village, Langkahan Sub District, Aceh Utara District, Aceh Province, Indonesia	4° 54' 50.896" N	97° 25' 55.472" E	2	2	34.3	No	06 October 2022
184	Sholikin Syaputra	Seureuke Village, Langkahan Sub District, Aceh Utara District, Aceh Province, Indonesia	4° 52' 3.581" N	97° 26' 40.719" E	1	1	20.25	No	06 October 2022
185	Sigit Guntho	Seureuke Village, Langkahan Sub District, Aceh Utara District, Aceh Province, Indonesia	4° 52' 5.033" N	97° 26' 47.476" E	1	1	13.2	No	06 October 2022
186	Sigit Wyono	Seureuke Village, Langkahan Sub District, Aceh Utara District, Aceh Province, Indonesia	4° 52' 21.648" N	97° 26' 22.986" E	1	1	21.1	No	06 October 2022
187	Siti Arolatun	Seureuke Village, Langkahan Sub District, Aceh Utara District, Aceh Province, Indonesia	4° 53' 18.682" N	97° 27' 0.794" E	0.5	0.5	10.1	No	09 October 2022
		Seureuke Village, Langkahan Sub District, Aceh Utara District, Aceh Province, Indonesia	4° 53' 21.405" N	97° 26' 57.209" E	1	1	15.9	No	09 October 2022
188	Siti Hadizah	Seureuke Village, Langkahan Sub District, Aceh Utara District, Aceh Province, Indonesia	4° 54' 32.424" N	97° 26' 15.276" E	2	2	0	No	09 October 2022
		Seureuke Village, Langkahan Sub District, Aceh Utara District, Aceh Province, Indonesia	4° 53' 59.840" N	97° 26' 5.621" E	2	2	26	No	09 October 2022
189	Siti Nurhasanah	Seureuke Village, Langkahan Sub District, Aceh Utara District, Aceh Province, Indonesia	4° 53' 41.152" N	97° 25' 20.606" E	2	2	0	No	09 October 2022
190	Siti Suryati	Seureuke Village, Langkahan Sub District, Aceh Utara District, Aceh Province, Indonesia	4° 52' 19.774" N	97° 26' 43.777" E	0.95	0.95	16	No	06 October 2022
191	Siyami	Seureuke Village, Langkahan Sub District, Aceh Utara District, Aceh Province, Indonesia	4° 52' 11.273" N	97° 26' 49.350" E	0.5	0.5	6.6	No	06 October 2022
192	Siyo S.ag	Seureuke Village, Langkahan Sub District, Aceh Utara District, Aceh Province, Indonesia	4° 51' 54.537" N	97° 25' 20.034" E	0.81	0.81	11.4	No	06 October 2022
193	Slamet Prawoto	Seureuke Village, Langkahan Sub District, Aceh Utara District, Aceh Province, Indonesia	4° 53' 53.240" N	97° 25' 32.342" E	0.7495	0.7495	14.4	No	09 October 2022
194	Sodkin	Seureuke Village, Langkahan Sub District, Aceh Utara District, Aceh Province, Indonesia	4° 51' 14.516" N	97° 26' 37.459" E	2	2	21.2	No	06 October 2022
195	Sri Amurni	Seureuke Village, Langkahan Sub District, Aceh Utara District, Aceh Province, Indonesia	4° 52' 17.165" N	97° 25' 44.350" E	1	1	14.85	No	09 October 2022
		Seureuke Village, Langkahan Sub District, Aceh Utara District, Aceh Province, Indonesia	4° 52' 17.254" N	97° 25' 47.757" E	1	1	14.16	No	09 October 2022
		Seureuke Village, Langkahan Sub District, Aceh Utara District, Aceh Province, Indonesia	4° 53' 32.099" N	97° 26' 27.280" E	2	2	26	No	09 October 2022
		Seureuke Village, Langkahan Sub District, Aceh Utara District, Aceh Province, Indonesia	4° 53' 6.591" N	97° 26' 26.682" E	2	2	0	No	09 October 2022
196	Sri Astuti	Seureuke Village, Langkahan Sub District, Aceh Utara District, Aceh Province, Indonesia	4° 54' 26.479" N	97° 25' 53.417" E	2	2	0	No	07 October 2022
197	Sri Dahniar	Seureuke Village, Langkahan Sub District, Aceh Utara District, Aceh Province, Indonesia	4° 53' 29.702" N	97° 27' 26.007" E	2	2	0	No	03 October 2022
		Seureuke Village, Langkahan Sub District, Aceh Utara District, Aceh Province, Indonesia	4° 53' 33.599" N	97° 27' 31.045" E	2	2	0	No	03 October 2022
		Seureuke Village, Langkahan Sub District, Aceh Utara District, Aceh Province, Indonesia	4° 53' 28.583" N	97° 27' 30.300" E	2	2	0	No	07 October 2022
		Seureuke Village, Langkahan Sub District, Aceh Utara District, Aceh Province, Indonesia	4° 51' 37.709" N	97° 26' 45.761" E	2	2	24.6	No	04 October 2022
199	Sri Kumalasari	Seureuke Village, Langkahan Sub District, Aceh Utara District, Aceh Province, Indonesia	4° 52' 52.701" N	97° 25' 58.375" E	0.68	0.68	11.8	No	01 October 2022
200	Sri Kusni	Seureuke Village, Langkahan Sub District, Aceh Utara District, Aceh Province, Indonesia	4° 53' 25.035" N	97° 25' 47.287" E	1	1	14	No	03 October 2022
201	Siti Mulyani	Seureuke Village, Langkahan Sub District, Aceh Utara District, Aceh Province, Indonesia	4° 53' 24.857" N	97° 26' 38.791" E	2	2	0	No	01 October 2022
202	Siti Wahyuni	Seureuke Village, Langkahan Sub District, Aceh Utara District, Aceh Province, Indonesia	4° 51' 56.565" N	97° 25' 19.954" E	0.68	0.68	8.8	No	03 October 2022
203	Siti Wahyuni	Seureuke Village, Langkahan Sub District, Aceh Utara District, Aceh Province, Indonesia	4° 52' 1.960" N	97° 27' 4.606" E	0.87	0.87	14.2	No	03 October 2022
204	Subani	Seureuke Village, Langkahan Sub District, Aceh Utara District, Aceh Province, Indonesia	4° 52' 8.046" N	97° 26' 47.869" E	0.77	0.77	7.2	No	07 October 2022
205	Sudarmin	Seureuke Village, Langkahan Sub District, Aceh Utara District, Aceh Province, Indonesia	4° 51' 30.170" N	97° 27' 1.780" E	1	1	16.4	No	07 October 2022
206	Sudarno	Seureuke Village, Langkahan Sub District, Aceh Utara District, Aceh Province, Indonesia	4° 54' 28.211" N	97° 26' 21.993" E	2	2	34	No	04 October 2022
		Seureuke Village, Langkahan Sub District, Aceh Utara District, Aceh Province, Indonesia	4° 54' 4.394" N	97° 25' 24.233" E	0.25	0.25	4.2	No	04 October 2022
207	Sudikan	Seureuke Village, Langkahan Sub District, Aceh Utara District, Aceh Province, Indonesia	4° 53' 24.125" N	97° 26' 27.569" E	2	2	2	No	01 October 2022
		Seureuke Village, Langkahan Sub District, Aceh Utara District, Aceh Province, Indonesia	4° 53' 1.439" N	97° 26' 17.896" E	2	2	2	No	01 October 2022
		Seureuke Village, Langkahan Sub District, Aceh Utara District, Aceh Province, Indonesia	4° 53' 7.935" N	97° 26' 6.154" E	2	2	0	No	01 October 2022
		Seureuke Village, Langkahan Sub District, Aceh Utara District, Aceh Province, Indonesia	4° 53' 22.764" N	97° 26' 13.717" E	2	2	0	No	01 October 2022
208	Sugito	Seureuke Village, Langkahan Sub District, Aceh Utara District, Aceh Province, Indonesia	4° 52' 6.894" N	97° 26' 16.428" E	1	1	13.2	No	07 October 2022
209	Sugyo	Seureuke Village, Langkahan Sub District, Aceh Utara District, Aceh Province, Indonesia	4° 53' 55.220" N	97° 25' 51.582" E	2	2	32	No	07 October 2022
210	Suharsono	Seureuke Village, Langkahan Sub District, Aceh Utara District, Aceh Province, Indonesia	4° 54' 26.775" N	97° 26' 12.448" E	2	2	31.2	No	07 October 2022
211	Sujoko	Seureuke Village, Langkahan Sub District, Aceh Utara District, Aceh Province, Indonesia	4° 52' 51.757" N	97° 26' 8.074" E	2	2	28	No	03 October 2022
		Seureuke Village, Langkahan Sub District, Aceh Utara District, Aceh Province, Indonesia	4° 53' 8.203" N	97° 25' 51.857" E	0.73	0.73	27.2	No	03 October 2022
212	Sukamb	Seureuke Village, Langkahan Sub District, Aceh Utara District, Aceh Province, Indonesia	4° 52' 39.583" N	97° 27' 6.895" E	0.98	0.98	20.25	No	07 October 2022
213	Suktana	Seureuke Village, Langkahan Sub District, Aceh Utara District, Aceh Province, Indonesia	4° 51' 54.426" N	97° 27' 14.007" E	0.68	0.68	10.3	No	01 October 2022
214	Sukardi	Seureuke Village, Langkahan Sub District, Aceh Utara District, Aceh Province, Indonesia	4° 54' 14.488" N	97° 26' 3.017" E	0.495	0.495	9.2	No	01 October 2022
		Seureuke Village, Langkahan Sub District, Aceh Utara District, Aceh Province, Indonesia	4° 54' 13.224" N	97° 26' 2.060" E	0.38	0.38	6.1	No	01 October 2022
215	Sukari	Seureuke Village, Langkahan Sub District, Aceh Utara District, Aceh Province, Indonesia	4° 53' 57.883" N	97° 25' 57.168" E	2	2	30	No	04 October 2022
216	Sukasmi	Seureuke Village, Langkahan Sub District, Aceh Utara District, Aceh Province, Indonesia	4° 52' 12.729" N	97° 25' 20.351" E	0.93	0.93	15	No	04 October 2022
		Seureuke Village, Langkahan Sub District, Aceh Utara District, Aceh Province, Indonesia	4° 52' 14.660" N	97° 25' 20.443" E	0.61	0.61	13.4	No	04 October 2022
217	Sukemi	Seureuke Village, Langkahan Sub District, Aceh Utara District, Aceh Province, Indonesia	4° 52' 1.969" N	97° 27' 1.413" E	0.87	0.87	16	No	01 October 2022
218	Sukirno	Seureuke Village, Langkahan Sub District, Aceh Utara District, Aceh Province, Indonesia	4° 52' 1.909" N	97° 26' 47.248" E	1	1	16.6	No	01 October 2022
219	Sulkan	Seureuke Village, Langkahan Sub District, Aceh Utara District, Aceh Province, Indonesia	4° 53' 35.001" N	97° 25' 21.434" E	2	2	0	No	03 October 2022
220	Sulistiani	Seureuke Village, Langkahan Sub District, Aceh Utara District, Aceh Province, Indonesia	4° 51' 40.544" N	97° 27' 3.803" E	2	2	30	No	01 October 2022
221	Sulistiono	Seureuke Village, Langkahan Sub District, Aceh Utara District, Aceh Province, Indonesia	4° 53' 17.065" N	97° 26' 40.392" E	2	2	27.2	No	01 October 2022
222	Sumanah	Seureuke Village, Langkahan Sub District, Aceh Utara District, Aceh Province, Indonesia	4° 51' 56.593" N	97° 27' 11.500" E	1	1	20.25	No	07 October 2022
223	Sumantri	Seureuke Village, Langkahan Sub District, Aceh Utara District, Aceh Province, Indonesia	4° 53' 54.144" N	97° 26' 35.767" E	0.424	0.424	9.25	No	10 October 2022
224	Sumhadi	Seureuke Village, Langkahan Sub District, Aceh Utara District, Aceh Province, Indonesia	4° 53' 47.047" N	97° 25' 22.687" E	0.71	0.71	14.8	No	03 October 2022
225	Sumiyati	Seureuke Village, Langkahan Sub District, Aceh Utara District, Aceh Province, Indonesia	4° 53' 21.100" N	97° 27' 11.774" E	0.72	0.72	0	No	03 October 2022

226	Sunardi	Seureuke Village, Langkahan Sub District, Aceh Utara District, Aceh Province, Indonesia	4° 53' 11.703" N	97° 26' 26.848" E	2	2	0	No	03 October 2022
		Seureuke Village, Langkahan Sub District, Aceh Utara District, Aceh Province, Indonesia	4° 53' 16.133" N	97° 26' 27.415" E	2	2	0	No	03 October 2022
227	Sunardi B	Seureuke Village, Langkahan Sub District, Aceh Utara District, Aceh Province, Indonesia	4° 53' 43.334" N	97° 26' 19.305" E	1	1	14.85	No	03 October 2022
228	Sunaryo	Seureuke Village, Langkahan Sub District, Aceh Utara District, Aceh Province, Indonesia	4° 53' 0.989" N	97° 27' 40.518" E	0.9167	0.9167	16.8	No	01 October 2022
229	Supariono	Seureuke Village, Langkahan Sub District, Aceh Utara District, Aceh Province, Indonesia	4° 51' 13.877" N	97° 25' 32.625" E	0.73	0.73	18.2	No	01 October 2022
230	Supartun	Seureuke Village, Langkahan Sub District, Aceh Utara District, Aceh Province, Indonesia	4° 55' 12.992" N	97° 25' 40.186" E	0.6792	0.6792	10.2	No	01 October 2022
231	Supriadi	Seureuke Village, Langkahan Sub District, Aceh Utara District, Aceh Province, Indonesia	4° 52' 15.723" N	97° 25' 37.896" E	0.2468	0.2468	4.4	No	10 October 2022
232	Suratamen	Seureuke Village, Langkahan Sub District, Aceh Utara District, Aceh Province, Indonesia	4° 52' 25.270" N	97° 27' 43.330" E	1	1	21.2	No	01 October 2022
233	Surep	Seureuke Village, Langkahan Sub District, Aceh Utara District, Aceh Province, Indonesia	4° 52' 42.594" N	97° 26' 0.744" E	2	2	32	No	01 October 2022
234	Suriyanto	Seureuke Village, Langkahan Sub District, Aceh Utara District, Aceh Province, Indonesia	4° 52' 49.644" N	97° 27' 21.854" E	1	1	23.25	No	07 October 2022
235	Suryani	Seureuke Village, Langkahan Sub District, Aceh Utara District, Aceh Province, Indonesia	4° 54' 24.324" N	97° 25' 37.622" E	2	2	0	No	07 October 2022
		Seureuke Village, Langkahan Sub District, Aceh Utara District, Aceh Province, Indonesia	4° 54' 24.629" N	97° 26' 40.221" E	2	2	0	No	10 October 2022
236	Subaj	Seureuke Village, Langkahan Sub District, Aceh Utara District, Aceh Province, Indonesia	4° 51' 34.309" N	97° 25' 17.287" E	0.75	0.75	13.6	No	03 October 2022
237	Sutanb	Seureuke Village, Langkahan Sub District, Aceh Utara District, Aceh Province, Indonesia	4° 52' 42.429" N	97° 26' 14.543" E	2	2	25.5	No	07 October 2022
238	Sutarmi	Seureuke Village, Langkahan Sub District, Aceh Utara District, Aceh Province, Indonesia	4° 54' 15.190" N	97° 26' 8.591" E	2	2	34	No	10 October 2022
239	Sutarmin	Seureuke Village, Langkahan Sub District, Aceh Utara District, Aceh Province, Indonesia	4° 52' 32.550" N	97° 25' 40.778" E	0.73	0.73	16.1	No	10 October 2022
240	Subawan	Seureuke Village, Langkahan Sub District, Aceh Utara District, Aceh Province, Indonesia	4° 51' 37.578" N	97° 26' 1.887" E	2	2	0	No	03 October 2022
241	Sutrisno	Seureuke Village, Langkahan Sub District, Aceh Utara District, Aceh Province, Indonesia	4° 54' 18.294" N	97° 25' 21.127" E	2	2	0	No	03 October 2022
242	Suwarno	Seureuke Village, Langkahan Sub District, Aceh Utara District, Aceh Province, Indonesia	4° 53' 20.911" N	97° 25' 51.911" E	0.9542	0.9542	18.2	No	07 October 2022
		Seureuke Village, Langkahan Sub District, Aceh Utara District, Aceh Province, Indonesia	4° 53' 20.940" N	97° 25' 49.331" E	0.8916	0.8916	17.2	No	07 October 2022
243	Suyadyono	Seureuke Village, Langkahan Sub District, Aceh Utara District, Aceh Province, Indonesia	4° 55' 19.579" N	97° 26' 30.161" E	0.91	0.91	17.2	No	10 October 2022
244	Suyantb	Seureuke Village, Langkahan Sub District, Aceh Utara District, Aceh Province, Indonesia	4° 52' 28.009" N	97° 25' 39.730" E	0.96	0.96	16.7	No	03 October 2022
245	Suyono	Seureuke Village, Langkahan Sub District, Aceh Utara District, Aceh Province, Indonesia	4° 52' 5.815" N	97° 25' 13.132" E	0.43	0.43	6.85	No	10 October 2022
246	Sya bari	Seureuke Village, Langkahan Sub District, Aceh Utara District, Aceh Province, Indonesia	4° 51' 40.007" N	97° 26' 33.289" E	0.4	0.4	9.4	No	07 October 2022
247	Syafi	Seureuke Village, Langkahan Sub District, Aceh Utara District, Aceh Province, Indonesia	4° 52' 43.213" N	97° 28' 1.067" E	0.88	0.88	20.25	No	10 October 2022
248	Taat	Seureuke Village, Langkahan Sub District, Aceh Utara District, Aceh Province, Indonesia	4° 52' 10.676" N	97° 27' 30.054" E	1	1	15.2	No	03 October 2022
249	Tardi	Seureuke Village, Langkahan Sub District, Aceh Utara District, Aceh Province, Indonesia	4° 54' 20.749" N	97° 25' 53.428" E	2	2	0	No	07 October 2022
		Seureuke Village, Langkahan Sub District, Aceh Utara District, Aceh Province, Indonesia	4° 53' 29.718" N	97° 26' 14.182" E	2	2	28.2	No	07 October 2022
		Seureuke Village, Langkahan Sub District, Aceh Utara District, Aceh Province, Indonesia	4° 53' 10.687" N	97° 26' 44.973" E	2	2	27.2	No	07 October 2022
		Seureuke Village, Langkahan Sub District, Aceh Utara District, Aceh Province, Indonesia	4° 53' 12.516" N	97° 26' 41.359" E	2	2	31.2	No	07 October 2022
250	Thomas Riyo	Seureuke Village, Langkahan Sub District, Aceh Utara District, Aceh Province, Indonesia	4° 52' 51.053" N	97° 27' 52.242" E	0.87	0.87	15.8	No	10 October 2022
251	Tuginin	Seureuke Village, Langkahan Sub District, Aceh Utara District, Aceh Province, Indonesia	4° 51' 57.783" N	97° 27' 7.049" E	1	1	20.25	No	10 October 2022
252	Tugyo	Seureuke Village, Langkahan Sub District, Aceh Utara District, Aceh Province, Indonesia	4° 53' 5.320" N	97° 26' 0.992" E	2	2	0	No	10 October 2022
253	Tukini	Seureuke Village, Langkahan Sub District, Aceh Utara District, Aceh Province, Indonesia	4° 51' 54.335" N	97° 26' 51.012" E	1	1	17.25	No	03 October 2022
		Seureuke Village, Langkahan Sub District, Aceh Utara District, Aceh Province, Indonesia	4° 51' 21.187" N	97° 25' 31.948" E	1	1	16.25	No	03 October 2022
254	Tumini	Seureuke Village, Langkahan Sub District, Aceh Utara District, Aceh Province, Indonesia	4° 54' 4.279" N	97° 26' 13.074" E	2	2	24	No	10 October 2022
255	Udi	Seureuke Village, Langkahan Sub District, Aceh Utara District, Aceh Province, Indonesia	4° 52' 53.005" N	97° 28' 0.856" E	1	1	18.4	No	03 October 2022
256	Udin	Seureuke Village, Langkahan Sub District, Aceh Utara District, Aceh Province, Indonesia	4° 52' 24.107" N	97° 27' 25.241" E	0.95	0.95	18.4	No	10 October 2022
257	Urip Neng Af	Seureuke Village, Langkahan Sub District, Aceh Utara District, Aceh Province, Indonesia	4° 51' 53.697" N	97° 27' 16.253" E	0.81	0.81	17.25	No	03 October 2022
258	Usadi	Seureuke Village, Langkahan Sub District, Aceh Utara District, Aceh Province, Indonesia	4° 51' 51.738" N	97° 25' 15.753" E	1	1	19.8	No	07 October 2022
259	Ustriani	Seureuke Village, Langkahan Sub District, Aceh Utara District, Aceh Province, Indonesia	4° 53' 4.382" N	97° 26' 24.194" E	2	2	40	No	10 October 2022
260	Wahono	Seureuke Village, Langkahan Sub District, Aceh Utara District, Aceh Province, Indonesia	4° 51' 41.493" N	97° 26' 40.650" E	2	2	36	No	03 October 2022
261	Wahyu Trijoko	Seureuke Village, Langkahan Sub District, Aceh Utara District, Aceh Province, Indonesia	4° 51' 47.644" N	97° 25' 20.698" E	0.56	0.56	10.2	No	10 October 2022
262	Wakidi Ahmad Fauzan	Seureuke Village, Langkahan Sub District, Aceh Utara District, Aceh Province, Indonesia	4° 54' 17.649" N	97° 25' 34.148" E	2	2	0	No	03 October 2022
		Seureuke Village, Langkahan Sub District, Aceh Utara District, Aceh Province, Indonesia	4° 53' 38.477" N	97° 25' 33.665" E	2	2	0	No	03 October 2022
263	Waldianto	Seureuke Village, Langkahan Sub District, Aceh Utara District, Aceh Province, Indonesia	4° 52' 14.252" N	97° 27' 10.297" E	0.24	0.24	6.6	No	10 October 2022
264	Warino	Seureuke Village, Langkahan Sub District, Aceh Utara District, Aceh Province, Indonesia	4° 52' 52.941" N	97° 26' 16.650" E	2	2	32	No	03 October 2022
265	Warmi	Seureuke Village, Langkahan Sub District, Aceh Utara District, Aceh Province, Indonesia	4° 54' 7.573" N	97° 25' 51.575" E	2	2	32	No	03 October 2022
266	Warmin	Seureuke Village, Langkahan Sub District, Aceh Utara District, Aceh Province, Indonesia	4° 54' 31.481" N	97° 25' 47.525" E	2	2	0	No	03 October 2022
267	Warsidi	Seureuke Village, Langkahan Sub District, Aceh Utara District, Aceh Province, Indonesia	4° 51' 48.999" N	97° 24' 51.112" E	1.19	1.19	18.5	No	03 October 2022
268	Wasbno	Seureuke Village, Langkahan Sub District, Aceh Utara District, Aceh Province, Indonesia	4° 52' 2.335" N	97° 27' 22.803" E	0.9	0.9	0	No	10 October 2022
269	Wafi	Seureuke Village, Langkahan Sub District, Aceh Utara District, Aceh Province, Indonesia	4° 53' 17.966" N	97° 26' 19.324" E	2	2	0	No	03 October 2022
270	Yusri	Seureuke Village, Langkahan Sub District, Aceh Utara District, Aceh Province, Indonesia	4° 52' 19.318" N	97° 27' 45.615" E	0.90	0.90	15.25	No	10 October 2022
TOTAL					568.655	568.655	5.802		

Locations maps of the unit certifications are:



Mutuagung Lestari, is also known Mutu International (MUTU), and has started as inspection, laboratory, and Certification body since 1990. As a private national company and supported with highly committed professionals, MUTU has gained recognition nationally and internationally. Since June 2003, MUTU has received recognition from the Ministry of Agriculture, Forestry, and Fishery of Japan (MAFF) as registered overseas certification body (ROCB). MUTU certify and mark products with Japan agriculture standard (JAS) covering Indonesia, Myanmar, Cambodia, Malaysia, Vietnam, Timor Leste, Philippines, Papua New Guinea and China. MUTU is the first ROCB in Asia. National Accreditation Committee has accredited MUTU as Quality Management System certification body (ISO 9001:2015) and Environmental Management System certification body (ISO 14001:2015). Indonesia Ecolabelling Institute (LEI) has also accredited MUTU as Sustainable Forest Management System certification body, Certification Body of Indonesian Sustainable Palm Oil (ISPO), Since March 2014, MUTU has been accredited by ASI (Accreditation Services International) as a RSPO certification body.

The auditor team for the certification assessment will be led of **Rahmat Abdiansyah** from PT Mutuagung Lestari, consist of:

Audit Team	Role/ Area of Requirement	Qualification and Experience
Rahmat Abdiansyah	Best Management Practice and OHS	Indonesian citizen. Bachelor of Forestry from IPB University, with majors in Forest Resources Conservation and Ecotourism. Has experience working in the Indonesian Palm Oil Farmers Organization and Indonesian private oil palm plantation companies. Participate in ISPO and RSPO Internal Auditor training in 2018, ISPO and P&C Certification Systems IHT in 2019, IHT ISO 19011, ISPO Auditor Training in 2020, RSPO Lead Auditor Training in 2020, ISO 14001 and ISO 9001 Lead Auditor Training in 2020, and awareness of the RSPO Certification System and the RSPO P&C in 2019 and 2020.
Rindu Galih Rachmansyah	Legal, Social, TBP, Transparency and SCCS	Indonesian citizen. Bachelor of Agriculture with major in Plant Pest and Disease. Has one year experience as Field Expert in Pesticide Company and 3 years' experience in Industrial Forest Management, Forest Rehabilitation and Reclamation on Indonesia Stated Owned Company as Assistant. Training which had attended including Lead Auditor ISO 9001, ISO 14001, ISO 17021, ISO 19011, SA 8000, Lead Auditor ISPO, Lead Auditor RSPO, RaCP & NPP Awareness and OHSAS 18001:2007. Has involved in several audit activities related to sustainable palm oil since 2017 in the aspects of Best Management Practices (BMP), social, worker welfare and OHS.
Erika Lucitawati	Environmental, GHG, and Conservation Aspects	Indonesian citizen. Bachelor of Engineering with major in Environmental Engineering. The trainings that have been attended include ISPO Lead Auditor Training, RSPO Lead Auditor Training, Awareness SA8000, In House Training of ISO 19011: 2018, ISO 17021: 2015, ISO 17065: 2012, ISO 9001: 2015, ISO 14001: 2015, ISO 45001: 2018, and The Supervision of Occupational Health and Safety Training.

PT Mutuagung Lestari invites stakeholders to provide comments (if any) on any of the following matters related to the site for assessment:

- a. Environmental protection within the estate or mill including use of pesticide and waste management.
- b. Biodiversity within the estate and mill
- c. Contribution for local development and opportunities for employment
- d. Provision of housing, sanitation, facility and education support
- e. Other issues related with the assessment

Comments accepted within 30 days from the date of this latter will be considered in the certification assessment. Please include the following details in case we may need to contact for your clarification on any issued raised.

Name : _____
 Address : _____

Telephone : _____
Fax : _____

If you wish your comments to be treated confidentiality or remain anonymous, please mark your reply 'CONFIDENTIAL'. Please send your comments to:

Thank you for your comments and feedback.

PT MUTUAGUNG LESTARI

Leonada

Operations Manager

Jl. Raya Bogor Km. 33.5 No. 19
Cimanggis, Depok - Indonesia 16953
Telephone: (+62-21) 8740202
Fax: (+62-21) 87740745/46
agri@mutucertification.com
web : www.mutucertification.com

**PERKUMPULAN SEJAHTERA PELITA
NUSANTARA**

Abdul Azis

Project Lead

Jalan Exxon MOI Blok A Desa Seureuke,
Kecamatan Langkahan, Kabupaten Aceh Utara,
Provinsi Aceh, Indonesia
Telephone: (+62) 813 7681 0646
abdul.azis@koltiva.com

Yours faithfully,



mutu
international

Irham Budiman

Director of PT Mutuagung Lestari