

Date: 03 August 2023

Notification of RSPO Independent Smallholders Standard Initial Certification MS-B of Perkumpulan Petani Mitra Harapan (RSPO Membership Number: 1-0433-23-000-00, 31 January 2023)

Dear Stakeholders,

Perkumpulan Petani Mitra Harapan has applied to Mutuagung Lestari and will conduct Initial Certification (MS-B), located at Kalimantan Village, Manis Mata Sub District, Ketapang District, Kalimantan Barat Province, Indonesia against the requirement of RSPO Independent Smallholder Standard, Indonesia National Interpretation for the Production of Sustainable Palm Oil 2020, endorsed by the RSPO Board of Governors on 14 February 2022.

Perkumpulan Petani Mitra Harapan has been registered on PalmTrace IT platform with member ID RSPO_PO1000015918. Mutuagung Lestari has arranged to conduct the assessment to Perkumpulan Petani Mitra Harapan on **11 to 14 September 2023**.

Name of Group Manager	Group Manager Address	ISH Group Location	GPS Reference	
			Latitude	Longitude
Sandi Priana	Kalimantan Village, Manis Mata Sub District, Ketapang District, Kalimantan Barat Province, Indonesia	Kalimantan Village, Manis Mata Sub District, Ketapang District, Kalimantan Barat Province, Indonesia	S 2° 19' 29.2"	E 110° 58' 14.1"

Perkumpulan Petani Mitra Harapan was founded on July, 18 2022, with a registration number at the Indonesian Ministry of Law and Human Right AHU-0007836-ah.01.07.tahun.2022 located in Cinta Damai Hamlet, Kalimantan Village, Manismata Sub District, Ketapang District, Kalimantan Barat Province, with a total of 310 smallholders and 1,365.50 ha of land area. Perkumpulan Petani Mitra Harapan (PPMH) RSPO membership number is 1-0433-23-000-00.

PPMH is a combination of 4 institutions, consist of:

1. CV Aman whose members are in Asam Besar Village.
2. Koperasi Jasa Bakti Mandiri Cemerlang members from this cooperative are in Kalimantan Village, Air Dekakah Village, and Suak Burung Village.
3. Koperasi Sinar Beraduk Jaya whose members are in Air Upas Village.
4. Koperasi ATS whose members are in Air Tarap Village and Air Upas village.

Perkumpulan Petani Mitra Harapan has a vision to create independent, prosperous and sustainable oil palm smallholders in plantation management.

Meanwhile, the mission of Perkumpulan Petani Mitra Harapan is;

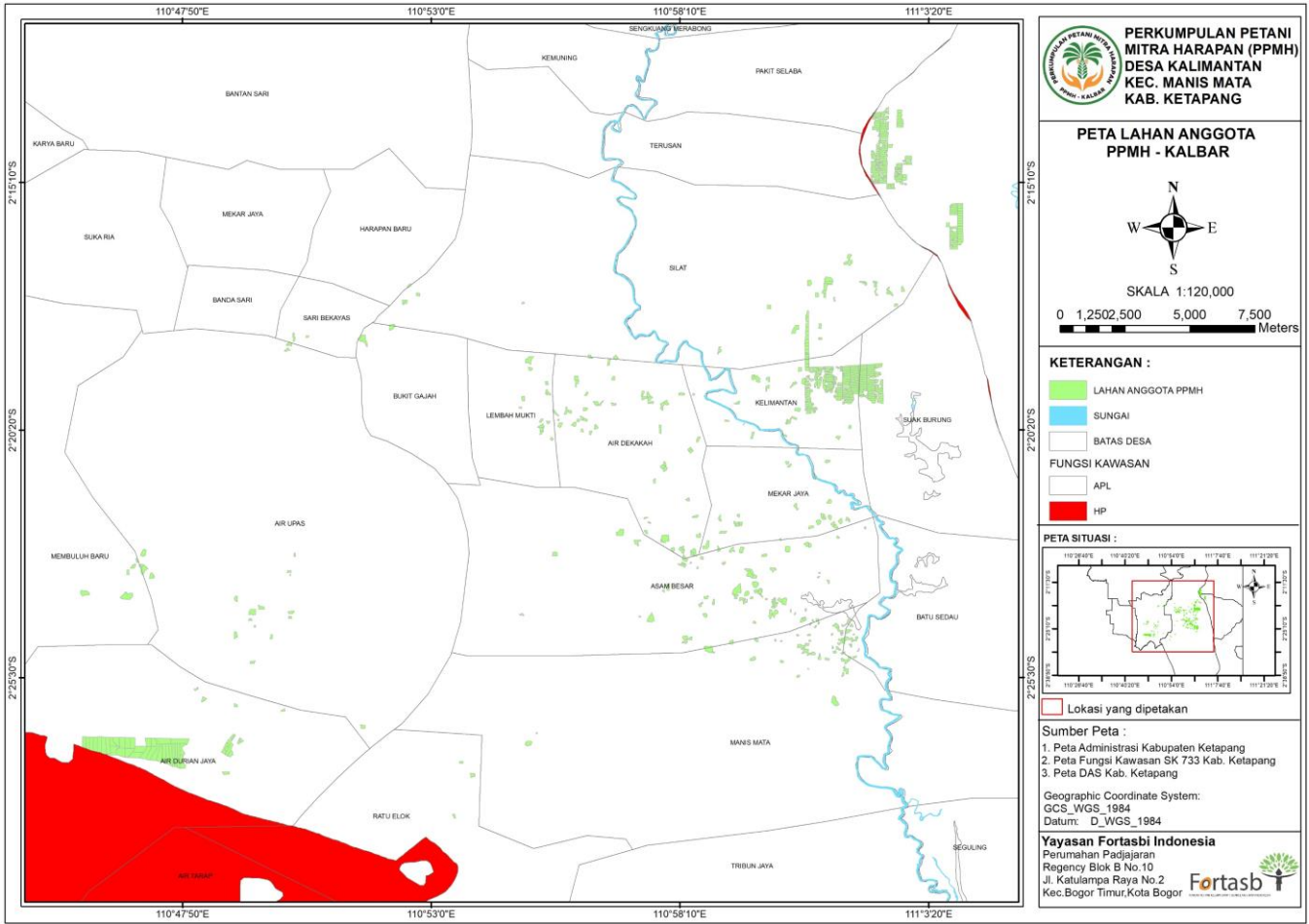
1. Strengthening the resources of oil palm smallholders through training in the plantation sector.
2. Building strong palm oil smallholder institutions that can guarantee access to agricultural production facilities, finance, and markets.
3. Encouraging the realization of sustainable palm oil management by means of plantations management that is fair, transparent and responsible as well as pro smallholders.

PPMH currently only operates oil palm plantations and buying and selling FFB.

Perkumpulan Petani Mitra Harapan has a group's future sustainability plan (3-5 year):

1. Adding members included in the certification.
2. Conducting socialization about sustainability to independent smallholders around PPMH working area.
3. To be first independent smallholders to sell physical certified FFB to certified SG mill under win-win physical premium sharing model/agreement to ensure end to end process of sustainable palm oil supply chain, from farmers to end users.

Locations maps of the unit certifications are:



338	SUNARDI	Air Dekakah Village, Manis Mata Sub District, Ketapang District, Kalimantan Barat Province, Indonesia	-2.331593825	110.93204	1.06	1.06	21.75	No	31 Januari 2023
339	YULLIANA	Air Dekakah Village, Manis Mata Sub District, Ketapang District, Kalimantan Barat Province, Indonesia	-2.336883783	110.9402067	1.80	1.80	36.94	No	31 Januari 2023
340	HARMONO	Air Dekakah Village, Manis Mata Sub District, Ketapang District, Kalimantan Barat Province, Indonesia	-2.321703245	110.9332246	2.00	2.00	41.04	No	31 Januari 2023
341	TOMI ISKANDAR	Air Dekakah Village, Manis Mata Sub District, Ketapang District, Kalimantan Barat Province, Indonesia	-2.339284804	110.9381162	1.20	1.20	24.62	No	31 Januari 2023
342			-2.322150211	110.9227318	1.20	1.20	24.62	No	31 Januari 2023
343	HANDI NATA	Air Dekakah Village, Manis Mata Sub District, Ketapang District, Kalimantan Barat Province, Indonesia	-2.355776993	110.9608547	1.17	1.17	24.01	No	31 Januari 2023
344	CBIT	Air Dekakah Village, Manis Mata Sub District, Ketapang District, Kalimantan Barat Province, Indonesia	-2.312821075	110.937622	1.50	1.50	30.78	No	31 Januari 2023
345	SURIYAH	Air Dekakah Village, Manis Mata Sub District, Ketapang District, Kalimantan Barat Province, Indonesia	-2.351670053	110.9645219	2.00	2.00	41.04	No	31 Januari 2023
346			-2.35087872	110.9632579	2.00	2.00	41.04	No	31 Januari 2023
347	JULI	Air Dekakah Village, Manis Mata Sub District, Ketapang District, Kalimantan Barat Province, Indonesia	-2.330739073	110.9635507	1.10	1.10	22.57	No	31 Januari 2023
348	JULIUS	Air Dekakah Village, Manis Mata Sub District, Ketapang District, Kalimantan Barat Province, Indonesia	-2.341274787	110.975688	1.90	1.90	38.99	No	31 Januari 2023
349	SUPAN	Air Dekakah Village, Manis Mata Sub District, Ketapang District, Kalimantan Barat Province, Indonesia	-2.349889417	110.9637322	1.20	1.20	24.62	No	31 Januari 2023
350	NANUNG	Air Dekakah Village, Manis Mata Sub District, Ketapang District, Kalimantan Barat Province, Indonesia	-2.337113982	110.9622243	2.20	2.20	45.14	No	31 Januari 2023
351	RUDI HAMSYAH	Air Dekakah Village, Manis Mata Sub District, Ketapang District, Kalimantan Barat Province, Indonesia	-2.32973333	110.9582522	1.50	1.50	30.78	No	31 Januari 2023
352	ANDRI YONO CHANDRA	Air Dekakah Village, Manis Mata Sub District, Ketapang District, Kalimantan Barat Province, Indonesia	-2.363018904	110.9712983	1.20	1.20	24.62	No	31 Januari 2023
353	BSTIK	Air Dekakah Village, Manis Mata Sub District, Ketapang District, Kalimantan Barat Province, Indonesia	-2.330870357	110.9317396	2.00	2.00	41.04	No	31 Januari 2023
354	EDI SUSANTO	Air Dekakah Village, Manis Mata Sub District, Ketapang District, Kalimantan Barat Province, Indonesia	-2.347011015	110.9729766	1.30	1.30	26.68	No	31 Januari 2023
355			-2.344924941	110.9730849	1.40	1.40	28.73	No	31 Januari 2023
356	DANI	Air Dekakah Village, Manis Mata Sub District, Ketapang District, Kalimantan Barat Province, Indonesia	-2.325812897	110.9678576	1.95	1.95	40.01	No	31 Januari 2023
357	UBOI	Air Dekakah Village, Manis Mata Sub District, Ketapang District, Kalimantan Barat Province, Indonesia	-2.320225964	110.9342535	2.46	2.46	50.48	No	31 Januari 2023
358	HINDI	Air Dekakah Village, Manis Mata Sub District, Ketapang District, Kalimantan Barat Province, Indonesia	-2.336501313	110.9274518	2.05	2.05	42.07	No	31 Januari 2023
359	ANTONIUS KPAN	Air Dekakah Village, Manis Mata Sub District, Ketapang District, Kalimantan Barat Province, Indonesia	-2.3350982	110.9272868	0.35	0.35	7.18	No	31 Januari 2023
360	CASUHA	Air Dekakah Village, Manis Mata Sub District, Ketapang District, Kalimantan Barat Province, Indonesia	-2.325611646	110.9372082	1.00	1.00	20.52	No	31 Januari 2023
361	KANGAK	Air Dekakah Village, Manis Mata Sub District, Ketapang District, Kalimantan Barat Province, Indonesia	-2.342732655	110.925074	1.00	1.00	20.52	No	31 Januari 2023
362			-2.305984475	111.0140116	1.92	1.92	39.39	No	31 Januari 2023
363			-2.308660095	111.0126213	1.93	1.93	39.64	No	31 Januari 2023
364	RIZAL ADI SAPUTRA	Kalimantan Village, Manis Mata Sub District, Ketapang District, Kalimantan Barat Province, Indonesia	-2.309818258	111.0127251	1.94	1.94	39.83	No	31 Januari 2023
365			-2.273427104	111.065831	2.00	2.00	41.04	No	31 Januari 2023
366			-2.325869699	111.0343803	1.92	1.92	39.31	No	31 Januari 2023
367	AAN	Suak Burung Village, Manis Mata Sub District, Ketapang District, Kalimantan Barat Province, Indonesia	-2.375913	111.023865	0.80	0.80	16.42	No	31 Januari 2023
368	ABIDIN	Suak Burung Village, Manis Mata Sub District, Ketapang District, Kalimantan Barat Province, Indonesia	-2.368265	111.019421	0.75	0.75	15.39	No	31 Januari 2023
369	AHMADIN	Suak Burung Village, Manis Mata Sub District, Ketapang District, Kalimantan Barat Province, Indonesia	-2.372673	111.022518	1.60	1.60	32.83	No	31 Januari 2023
370	BAHTIAR	Suak Burung Village, Manis Mata Sub District, Ketapang District, Kalimantan Barat Province, Indonesia	-2.356029	111.016509	0.50	0.50	10.26	No	31 Januari 2023
371	DEBORA TUTY INDRAWATI	Suak Burung Village, Manis Mata Sub District, Ketapang District, Kalimantan Barat Province, Indonesia	-2.370369	111.027725	0.50	0.50	10.26	No	31 Januari 2023
372	FERDINAN	Suak Burung Village, Manis Mata Sub District, Ketapang District, Kalimantan Barat Province, Indonesia	-2.349903	111.021436	1.75	1.75	35.91	No	31 Januari 2023
373	FILIPUS MUJI BOY	Suak Burung Village, Manis Mata Sub District, Ketapang District, Kalimantan Barat Province, Indonesia	-2.365277	111.008673	1.50	1.50	30.78	No	31 Januari 2023
374	FREDINANDES ABIDIN	Suak Burung Village, Manis Mata Sub District, Ketapang District, Kalimantan Barat Province, Indonesia	-2.369403	111.019869	0.95	0.95	19.49	No	31 Januari 2023
375	HENGKY	Suak Burung Village, Manis Mata Sub District, Ketapang District, Kalimantan Barat Province, Indonesia	-2.370324	111.026737	1.05	1.05	21.55	No	31 Januari 2023
376	LAMBUR	Suak Burung Village, Manis Mata Sub District, Ketapang District, Kalimantan Barat Province, Indonesia	-2.350903	111.00672	1.15	1.15	23.60	No	31 Januari 2023
377	RANO	Suak Burung Village, Manis Mata Sub District, Ketapang District, Kalimantan Barat Province, Indonesia	-2.373313	111.033907	0.55	0.55	11.29	No	31 Januari 2023
378	SIDANG	Suak Burung Village, Manis Mata Sub District, Ketapang District, Kalimantan Barat Province, Indonesia	-2.354445	111.016563	0.70	0.70	14.36	No	31 Januari 2023
379	SUYADI	Suak Burung Village, Manis Mata Sub District, Ketapang District, Kalimantan Barat Province, Indonesia	-2.377011	111.003674	0.60	0.60	12.31	No	31 Januari 2023
380	TRI ARTATI	Suak Burung Village, Manis Mata Sub District, Ketapang District, Kalimantan Barat Province, Indonesia	-2.371046	111.025683	2.05	2.05	42.07	No	31 Januari 2023
381	VICTORIANDES ABIDIN	Suak Burung Village, Manis Mata Sub District, Ketapang District, Kalimantan Barat Province, Indonesia	-2.369478	111.01879	1.65	1.65	33.86	No	31 Januari 2023
382	YAHUDA	Suak Burung Village, Manis Mata Sub District, Ketapang District, Kalimantan Barat Province, Indonesia	-2.35378	111.015584	0.20	0.20	4.10	No	31 Januari 2023
383	PNGKUN	Suak Burung Village, Manis Mata Sub District, Ketapang District, Kalimantan Barat Province, Indonesia	-2.3684	111.020739	1.75	1.75	35.91	No	31 Januari 2023
384	SUMAR	Suak Burung Village, Manis Mata Sub District, Ketapang District, Kalimantan Barat Province, Indonesia	-2.372825	111.013942	1.60	1.60	32.83	No	31 Januari 2023
385	ARMAN	Suak Burung Village, Manis Mata Sub District, Ketapang District, Kalimantan Barat Province, Indonesia	-2.341207	111.025024	1.60	1.60	32.83	No	31 Januari 2023
386	TAJUL	Suak Burung Village, Manis Mata Sub District, Ketapang District, Kalimantan Barat Province, Indonesia	-2.335754	111.028787	1.20	1.20	24.62	No	31 Januari 2023
387	NATALIA WENDA	Suak Burung Village, Manis Mata Sub District, Ketapang District, Kalimantan Barat Province, Indonesia	-2.366708	111.009686	0.65	0.65	13.34	No	31 Januari 2023
388	LANA	Suak Burung Village, Manis Mata Sub District, Ketapang District, Kalimantan Barat Province, Indonesia	-2.35183	111.006551	1.00	1.00	20.52	No	31 Januari 2023
389	ELLA CAHYAWATI	Kalimantan Village, Manis Mata Sub District, Ketapang District, Kalimantan Barat Province, Indonesia	-2.279951	111.029129	2.85	2.85	58.48	No	31 Januari 2023
390	YANDI	Kalimantan Village, Manis Mata Sub District, Ketapang District, Kalimantan Barat Province, Indonesia	-2.287934752	111.0192131	3.05	3.05	62.59	No	31 Januari 2023
391	RACIS	Kalimantan Village, Manis Mata Sub District, Ketapang District, Kalimantan Barat Province, Indonesia	-2.291326	111.017483	1.85	1.85	37.96	No	31 Januari 2023
392	M. BAROZAK	Kalimantan Village, Manis Mata Sub District, Ketapang District, Kalimantan Barat Province, Indonesia	-2.291774	111.041523	1.35	1.35	27.70	No	31 Januari 2023
393	DANI	Kalimantan Village, Manis Mata Sub District, Ketapang District, Kalimantan Barat Province, Indonesia	-2.287682	111.036273	1.05	1.05	21.55	No	31 Januari 2023
394	KITK	Kalimantan Village, Manis Mata Sub District, Ketapang District, Kalimantan Barat Province, Indonesia	-2.288040786	111.0204902	0.60	0.60	12.31	No	31 Januari 2023
395	JUBUNG	Kalimantan Village, Manis Mata Sub District, Ketapang District, Kalimantan Barat Province, Indonesia	-2.291118	111.036939	0.80	0.80	16.42	No	31 Januari 2023
396	UJANG S	Kalimantan Village, Manis Mata Sub District, Ketapang District, Kalimantan Barat Province, Indonesia	-2.280645	111.026122	1.30	1.30	26.68	No	31 Januari 2023
397	DIYAWAN	Kalimantan Village, Manis Mata Sub District, Ketapang District, Kalimantan Barat Province, Indonesia	-2.287317	111.03152	0.75	0.75	15.39	No	31 Januari 2023
398			-2.291008	111.037038	0.45	0.45	9.23	No	31 Januari 2023
399	TUTI ARIANTI	Kalimantan Village, Manis Mata Sub District, Ketapang District, Kalimantan Barat Province, Indonesia	-2.290282663	111.0192644	1.80	1.80	36.94	No	31 Januari 2023
400	ASIONG	Kalimantan Village, Manis Mata Sub District, Ketapang District, Kalimantan Barat Province, Indonesia	-2.302572949	111.0105017	4.85	4.85	99.52	No	31 Januari 2023
401			-2.312590935	110.9827117	2.00	2.00	41.04	No	31 Januari 2023
402	SUKAR K	Kalimantan Village, Manis Mata Sub District, Ketapang District, Kalimantan Barat Province, Indonesia	-2.322384	111.009779	0.60	0.60	12.31	No	31 Januari 2023
403	RANO	Kalimantan Village, Manis Mata Sub District, Ketapang District, Kalimantan Barat Province, Indonesia	-2.324341	111.007487	1.60	1.60	32.83	No	31 Januari 2023
404	ROFK	Air Upas Village, Air Upas Sub District, Ketapang District, Kalimantan Barat Province, Indonesia	-2.451022631	110.7836082	9.63	9.63	197.67	No	31 Januari 2023
405			-2.448050408	110.7924202	9.15	9.15	187.76	No	31 Januari 2023
406	SABAR SUPANGAT	Air Upas Village, Air Upas Sub District, Ketapang District, Kalimantan Barat Province, Indonesia	-2.448006594	110.7945332	8.47	8.47	173.73	No	31 Januari 2023
407			-2.445774201	110.7705025	10.35	10.35	212.48	No	31 Januari 2023
408	NURSALIM	Air Upas Village, Air Upas Sub District, Ketapang District, Kalimantan Barat Province, Indonesia	-2.449043477	110.7849454	9.71	9.71	199.29	No	31 Januari 2023
409			-2.448189473	110.7892134	10.09	10.09	207.05	No	31 Januari 2023
410	DYAN	Air Upas Village, Air Upas Sub District, Ketapang District, Kalimantan Barat Province, Indonesia	-2.448013669	110.7934843	9.32	9.32	191.35	No	31 Januari 2023

411	SABAR	Air Upas Village, Air Upas Sub District, Ketapang District, Kalimantan Barat Province, Indonesia	-2.445895241	110.7753734	8.72	8.72	178.90	No	31 Januari 2023
412			-2.448146754	110.7901982	9.55	9.55	196.06	No	31 Januari 2023
413	SAMTOMO	Air Upas Village, Air Upas Sub District, Ketapang District, Kalimantan Barat Province, Indonesia	-2.445953386	110.779073	8.02	8.02	164.66	No	31 Januari 2023
414	SUNWTO	Air Upas Village, Air Upas Sub District, Ketapang District, Kalimantan Barat Province, Indonesia	-2.447995363	110.7962045	7.16	7.16	147.02	No	31 Januari 2023
415	ROBERT SANGSEKERTA	Air Upas Village, Air Upas Sub District, Ketapang District, Kalimantan Barat Province, Indonesia	-2.449061808	110.7864435	10.87	10.87	223.05	No	31 Januari 2023
416			-2.44565743	110.7638395	6.40	6.40	131.33	No	31 Januari 2023
417	NURUL Hidayati	Air Upas Village, Air Upas Sub District, Ketapang District, Kalimantan Barat Province, Indonesia	-2.445677802	110.7651108	6.80	6.80	139.54	No	31 Januari 2023
418			-2.445756513	110.769164	10.66	10.66	218.74	No	31 Januari 2023
419	MUHAMMAD ZERRY	Air Upas Village, Air Upas Sub District, Ketapang District, Kalimantan Barat Province, Indonesia	-2.44609813	110.786383	6.26	6.26	128.36	No	31 Januari 2023
420			-2.446123214	110.7871624	12.01	12.01	246.46	No	31 Januari 2023
421	ARIP Hidayat	Air Upas Village, Air Upas Sub District, Ketapang District, Kalimantan Barat Province, Indonesia	-2.446167934	110.7897109	10.23	10.23	209.94	No	31 Januari 2023
422			-2.452617699	110.7781003	9.51	9.51	195.15	No	31 Januari 2023
423	NURYANTO	Air Upas Village, Air Upas Sub District, Ketapang District, Kalimantan Barat Province, Indonesia	-2.448001023	110.7958624	8.65	8.65	177.46	No	31 Januari 2023
424			-2.445925595	110.7773049	8.02	8.02	164.57	No	31 Januari 2023
425	SITIATMAT	Air Upas Village, Air Upas Sub District, Ketapang District, Kalimantan Barat Province, Indonesia	-2.448098897	110.7913013	10.31	10.31	211.51	No	31 Januari 2023
426	SLAMET ROHMANTO	Air Upas Village, Air Upas Sub District, Ketapang District, Kalimantan Barat Province, Indonesia	-2.445895241	110.7753734	7.05	7.05	144.70	No	31 Januari 2023
427			-2.445677802	110.7651108	7.55	7.55	154.93	No	31 Januari 2023
428	ABDUL ROHMAT	Air Upas Village, Air Upas Sub District, Ketapang District, Kalimantan Barat Province, Indonesia	-2.445798677	110.7718713	5.82	5.82	119.40	No	31 Januari 2023
429			-2.448792774	110.7720832	8.52	8.52	174.83	No	31 Januari 2023
430	HARTONO	Air Upas Village, Air Upas Sub District, Ketapang District, Kalimantan Barat Province, Indonesia	-2.44590482	110.775394	10.17	10.17	208.69	No	31 Januari 2023
431			-2.451338821	110.7691861	9.53	9.53	195.56	No	31 Januari 2023
432	KHSANUDIN	Air Upas Village, Air Upas Sub District, Ketapang District, Kalimantan Barat Province, Indonesia	-2.445247376	110.7677164	8.40	8.40	172.37	No	31 Januari 2023
433	DWI MARTNI	Air Upas Village, Air Upas Sub District, Ketapang District, Kalimantan Barat Province, Indonesia	-2.452123078	110.7962391	7.42	7.42	152.21	No	31 Januari 2023
434			-2.44609813	110.786383	7.10	7.10	145.69	No	31 Januari 2023
435	PANAH	Air Upas Village, Air Upas Sub District, Ketapang District, Kalimantan Barat Province, Indonesia	-2.446245189	110.7932075	12.44	12.44	255.31	No	31 Januari 2023
436	SARTI	Air Upas Village, Air Upas Sub District, Ketapang District, Kalimantan Barat Province, Indonesia	-2.449595404	110.777309	8.37	8.37	171.84	No	31 Januari 2023
437	AHMAD RDUWAN	Air Upas Village, Air Upas Sub District, Ketapang District, Kalimantan Barat Province, Indonesia	-2.305215354	110.8354195	1.01	1.01	20.64	No	31 Januari 2023
438	ALOH	Air Upas Village, Air Upas Sub District, Ketapang District, Kalimantan Barat Province, Indonesia	-2.406812891	110.8220416	0.41	0.41	8.20	No	31 Januari 2023
439	YUYU	Air Upas Village, Air Upas Sub District, Ketapang District, Kalimantan Barat Province, Indonesia	-2.409154046	110.8150498	2.66	2.66	54.58	No	31 Januari 2023
440	BRONI SUDARMAN	Air Upas Village, Air Upas Sub District, Ketapang District, Kalimantan Barat Province, Indonesia	-2.457791818	110.8108722	2.53	2.53	51.92	No	31 Januari 2023
441	AN DUTA	Air Upas Village, Air Upas Sub District, Ketapang District, Kalimantan Barat Province, Indonesia	-2.311421333	110.8324057	1.45	1.45	29.75	No	31 Januari 2023
442	ANDREAS BAMBIF	Air Upas Village, Air Upas Sub District, Ketapang District, Kalimantan Barat Province, Indonesia	-2.306166809	110.8399433	0.75	0.75	15.39	No	31 Januari 2023
443	DAS KRISTADI	Air Upas Village, Air Upas Sub District, Ketapang District, Kalimantan Barat Province, Indonesia	-2.444963657	110.8154163	8.41	8.41	172.57	No	31 Januari 2023
444	ASTUTI	Air Upas Village, Air Upas Sub District, Ketapang District, Kalimantan Barat Province, Indonesia	-2.309322544	110.8330715	2.05	2.05	42.07	No	31 Januari 2023
445	BKAP	Air Tarap Village, Air Upas Sub District, Ketapang District, Kalimantan Barat Province, Indonesia	-2.383872472	110.780958	0.84	0.84	17.24	No	31 Januari 2023
446	ELISABET SEKNAK	Air Tarap Village, Air Upas Sub District, Ketapang District, Kalimantan Barat Province, Indonesia	-2.291469812	110.8794347	1.62	1.62	33.16	No	31 Januari 2023
447			-2.306708217	110.8356621	1.03	1.03	21.18	No	31 Januari 2023
448	FRM NUS LIHAN	Air Tarap Village, Air Upas Sub District, Ketapang District, Kalimantan Barat Province, Indonesia	-2.389400677	110.7833496	5.05	5.05	103.63	No	31 Januari 2023
449	FRANSISKUS HASNO	Air Tarap Village, Air Upas Sub District, Ketapang District, Kalimantan Barat Province, Indonesia	-2.380489332	110.7835759	4.02	4.02	82.49	No	31 Januari 2023
450	GUNTUN	Air Tarap Village, Air Upas Sub District, Ketapang District, Kalimantan Barat Province, Indonesia	-2.38572752	110.7835301	1.30	1.30	26.68	No	31 Januari 2023
451	JUMPUL	Air Tarap Village, Air Upas Sub District, Ketapang District, Kalimantan Barat Province, Indonesia	-2.404541847	110.8203059	0.85	0.85	17.44	No	31 Januari 2023
452	MARATAI	Air Tarap Village, Air Upas Sub District, Ketapang District, Kalimantan Barat Province, Indonesia	-2.403629827	110.8339148	1.07	1.07	21.96	No	31 Januari 2023
453	MUHAMMAD DAUD	Air Tarap Village, Air Upas Sub District, Ketapang District, Kalimantan Barat Province, Indonesia	-2.385446702	110.7809217	2.04	2.04	41.82	No	31 Januari 2023
454	MUPENDI	Air Tarap Village, Air Upas Sub District, Ketapang District, Kalimantan Barat Province, Indonesia	-2.39668205	110.7624192	5.22	5.22	107.11	No	31 Januari 2023
455			-2.397786236	110.7765125	9.50	9.50	194.94	No	31 Januari 2023
456	LUNA	Air Tarap Village, Air Upas Sub District, Ketapang District, Kalimantan Barat Province, Indonesia	-2.446890829	110.8166484	1.04	1.04	21.34	No	31 Januari 2023
457	FRANSISKUS JANGKANG	Air Tarap Village, Air Upas Sub District, Ketapang District, Kalimantan Barat Province, Indonesia	-2.302486616	110.8687962	3.70	3.70	75.92	No	31 Januari 2023
458	ARIS TRIYANTA	Air Tarap Village, Air Upas Sub District, Ketapang District, Kalimantan Barat Province, Indonesia	-2.293833421	110.8745084	1.30	1.30	26.68	No	31 Januari 2023
459	UGAP	Air Tarap Village, Air Upas Sub District, Ketapang District, Kalimantan Barat Province, Indonesia	-2.434110922	110.8150507	1.35	1.35	27.70	No	31 Januari 2023
460	YULIUS	Air Tarap Village, Air Upas Sub District, Ketapang District, Kalimantan Barat Province, Indonesia	-2.402035484	110.8337287	2.05	2.05	42.07	No	31 Januari 2023
461	SILVINUS NUDIN	Air Tarap Village, Air Upas Sub District, Ketapang District, Kalimantan Barat Province, Indonesia	-2.387753203	110.7778902	1.71	1.71	35.09	No	31 Januari 2023
462	RKE APRANTO	Air Tarap Village, Air Upas Sub District, Ketapang District, Kalimantan Barat Province, Indonesia	-2.38852107	110.8333319	1.08	1.08	22.16	No	31 Januari 2023
463			-2.389679183	110.8344562	0.14	0.14	2.87	No	31 Januari 2023
464	RUSMAN THOMAS	Air Tarap Village, Air Upas Sub District, Ketapang District, Kalimantan Barat Province, Indonesia	-2.428983177	110.8012122	0.89	0.89	18.26	No	31 Januari 2023
465			-2.398760181	110.8160882	1.88	1.88	38.58	No	31 Januari 2023
466	SILUS	Air Tarap Village, Air Upas Sub District, Ketapang District, Kalimantan Barat Province, Indonesia	-2.410152148	110.8277571	1.46	1.46	29.96	No	31 Januari 2023
467	TATING	Air Tarap Village, Air Upas Sub District, Ketapang District, Kalimantan Barat Province, Indonesia	-2.420240678	110.8206561	1.61	1.61	33.04	No	31 Januari 2023
468			-2.402472355	110.8201148	4.93	4.93	101.16	No	31 Januari 2023
469	UJANG	Air Tarap Village, Air Upas Sub District, Ketapang District, Kalimantan Barat Province, Indonesia	-2.382939243	110.8356892	0.78	0.78	16.01	No	31 Januari 2023
470	YOHANES SUHENG	Air Tarap Village, Air Upas Sub District, Ketapang District, Kalimantan Barat Province, Indonesia	-2.390544626	110.7856211	2.98	2.98	61.15	No	31 Januari 2023
471	GUNDUL	Air Tarap Village, Air Upas Sub District, Ketapang District, Kalimantan Barat Province, Indonesia	-2.445931896	110.8169813	0.43	0.43	8.82	No	31 Januari 2023
472	MATHEO MESA	Air Tarap Village, Air Upas Sub District, Ketapang District, Kalimantan Barat Province, Indonesia	-2.43820819	110.8317881	1.17	1.17	24.01	No	31 Januari 2023
473	NNGA	Air Tarap Village, Air Upas Sub District, Ketapang District, Kalimantan Barat Province, Indonesia	-2.45226424	110.8126359	3.45	3.45	70.79	No	31 Januari 2023
474	SUHARDI	Air Tarap Village, Air Upas Sub District, Ketapang District, Kalimantan Barat Province, Indonesia	-2.446313942	110.8174526	1.23	1.23	25.24	No	31 Januari 2023
475			-2.446112326	110.8135453	1.64	1.64	33.65	No	31 Januari 2023
476	SURIADI	Air Tarap Village, Air Upas Sub District, Ketapang District, Kalimantan Barat Province, Indonesia	-2.431798521	110.8043456	2.00	2.00	41.04	No	31 Januari 2023
477	NADI	Air Tarap Village, Air Upas Sub District, Ketapang District, Kalimantan Barat Province, Indonesia	-2.305999799	110.8590555	6.98	6.98	143.23	No	31 Januari 2023
478	BOMAN SIMBOLON	Air Tarap Village, Air Upas Sub District, Ketapang District, Kalimantan Barat Province, Indonesia	-2.293833421	110.8745084	1.30	1.30	26.68	No	31 Januari 2023
479	ANASTASIA HAUCING	Air Tarap Village, Air Upas Sub District, Ketapang District, Kalimantan Barat Province, Indonesia	-2.288066137	110.8758217	1.30	1.30	26.68	No	31 Januari 2023
480	DERIPUL	Harapan Baru Village, Air Upas Sub District, Ketapang District, Kalimantan Barat Province, Indonesia	-2.318313808	110.9176414	1.50	1.50	30.78	No	31 Januari 2023
481			-2.315653848	110.9160316	5.10	5.10	104.65	No	31 Januari 2023
482			-2.294845283	110.9145669	0.60	0.60	12.31	No	31 Januari 2023
483	ASIT	Air Tarap Village, Air Upas Sub District, Ketapang District, Kalimantan Barat Province, Indonesia	-2.4012944	110.8236433	2.45	2.45	50.27	No	31 Januari 2023

484	AMEROHADI	Air Tarap Village, Air Upas Sub District, Ketapang District, Kalimantan Barat Province, Indonesia	-2.442689108	110.8590056	2.12	2.12	43.50	No	31 Januari 2023
485	YUSUF MANOBE	Asam Besar, Manis Mala Sub District, Ketapang District, Kalimantan Barat Province, Indonesia	-2.421679701	111.0259318	0.43	0.43	8.82	No	31 Januari 2023
486		Asam Besar, Manis Mala Sub District, Ketapang District, Kalimantan Barat Province, Indonesia	-2.416043289	111.0306359	0.34	0.34	6.98	No	31 Januari 2023
487	KRISTINA MARDIANA	Asam Besar, Manis Mala Sub District, Ketapang District, Kalimantan Barat Province, Indonesia	-2.420349758	111.0264984	1.69	1.69	34.68	No	31 Januari 2023
488		Asam Besar, Manis Mala Sub District, Ketapang District, Kalimantan Barat Province, Indonesia	-2.413745363	111.0244835	0.69	0.69	14.16	No	31 Januari 2023
489	SUPRIMANTO	Asam Besar, Manis Mala Sub District, Ketapang District, Kalimantan Barat Province, Indonesia	-2.390431	111.0172964	0.34	0.34	6.98	No	31 Januari 2023
490		Asam Besar, Manis Mala Sub District, Ketapang District, Kalimantan Barat Province, Indonesia	-2.38878439	111.0173684	0.34	0.34	6.98	No	31 Januari 2023
491	HENDRIK KAMAN SITANGGANG	Asam Besar, Manis Mala Sub District, Ketapang District, Kalimantan Barat Province, Indonesia	-2.374380458	110.9474187	5.42	5.42	111.22	No	31 Januari 2023
492		Asam Besar, Manis Mala Sub District, Ketapang District, Kalimantan Barat Province, Indonesia	-2.369477232	110.9568899	0.61	0.61	12.52	No	31 Januari 2023
493		Asam Besar, Manis Mala Sub District, Ketapang District, Kalimantan Barat Province, Indonesia	-2.382793285	110.9252111	2.88	2.88	59.10	No	31 Januari 2023
494	YASINTA YUNI	Asam Besar, Manis Mala Sub District, Ketapang District, Kalimantan Barat Province, Indonesia	-2.399975905	111.001718	1.62	1.62	33.24	No	31 Januari 2023
495	YULIA TUTUI	Asam Besar, Manis Mala Sub District, Ketapang District, Kalimantan Barat Province, Indonesia	-2.407718575	111.0235555	2.34	2.34	48.02	No	31 Januari 2023
496	YADI	Asam Besar, Manis Mala Sub District, Ketapang District, Kalimantan Barat Province, Indonesia	-2.399767637	110.9807336	1.36	1.36	27.91	No	31 Januari 2023
497	TITUS	Asam Besar, Manis Mala Sub District, Ketapang District, Kalimantan Barat Province, Indonesia	-2.404580592	111.0277124	1.54	1.54	31.80	No	31 Januari 2023
498	SUSI	Asam Besar, Manis Mala Sub District, Ketapang District, Kalimantan Barat Province, Indonesia	-2.418829992	111.0196715	1.24	1.24	25.44	No	31 Januari 2023
499	SUPAR	Asam Besar, Manis Mala Sub District, Ketapang District, Kalimantan Barat Province, Indonesia	-2.399091989	111.0048688	2.13	2.13	43.71	No	31 Januari 2023
500	SUHAR GIMAN	Asam Besar, Manis Mala Sub District, Ketapang District, Kalimantan Barat Province, Indonesia	-2.414053153	111.0130243	1.33	1.33	27.29	No	31 Januari 2023
501	WELHELMUS WIDI SUGIANTO	Asam Besar, Manis Mala Sub District, Ketapang District, Kalimantan Barat Province, Indonesia	-2.415138867	111.0124307	0.98	0.98	20.11	No	31 Januari 2023
502	SITI TAZQIROH	Asam Besar, Manis Mala Sub District, Ketapang District, Kalimantan Barat Province, Indonesia	-2.417110921	111.0256079	0.98	0.98	20.11	No	31 Januari 2023
503	SIGARIUS AJUS	Asam Besar, Manis Mala Sub District, Ketapang District, Kalimantan Barat Province, Indonesia	-2.41864007	111.0174947	1.64	1.64	33.65	No	31 Januari 2023
504	SANDI	Asam Besar, Manis Mala Sub District, Ketapang District, Kalimantan Barat Province, Indonesia	-2.419218923	111.0260037	0.91	0.91	18.67	No	31 Januari 2023
505	SADI	Asam Besar, Manis Mala Sub District, Ketapang District, Kalimantan Barat Province, Indonesia	-2.392385096	111.0209482	0.95	0.95	19.49	No	31 Januari 2023
506	SYAHRAL	Asam Besar, Manis Mala Sub District, Ketapang District, Kalimantan Barat Province, Indonesia	-2.411942861	111.0267637	1.91	1.91	39.19	No	31 Januari 2023
507		Asam Besar, Manis Mala Sub District, Ketapang District, Kalimantan Barat Province, Indonesia	-2.415563922	111.0245015	1.31	1.31	26.88	No	31 Januari 2023
508	RUSLAN	Asam Besar, Manis Mala Sub District, Ketapang District, Kalimantan Barat Province, Indonesia	-2.413618641	111.0289178	0.35	0.35	7.18	No	31 Januari 2023
509	RUMPUKUNG	Asam Besar, Manis Mala Sub District, Ketapang District, Kalimantan Barat Province, Indonesia	-2.399478207	110.991725	1.35	1.35	27.70	No	31 Januari 2023
510	RINTAN	Asam Besar, Manis Mala Sub District, Ketapang District, Kalimantan Barat Province, Indonesia	-2.431396411	111.0227298	6.25	6.25	128.25	No	31 Januari 2023
511	MATUAN	Asam Besar, Manis Mala Sub District, Ketapang District, Kalimantan Barat Province, Indonesia	-2.416703836	111.0231883	1.10	1.10	22.57	No	31 Januari 2023
512	LKJAN	Asam Besar, Manis Mala Sub District, Ketapang District, Kalimantan Barat Province, Indonesia	-2.414398329	111.0120413	0.59	0.59	12.11	No	31 Januari 2023
513	LEHAN SYAHNI	Asam Besar, Manis Mala Sub District, Ketapang District, Kalimantan Barat Province, Indonesia	-2.3967731	110.9894134	9.28	9.28	190.43	No	31 Januari 2023
514	LARA	Asam Besar, Manis Mala Sub District, Ketapang District, Kalimantan Barat Province, Indonesia	-2.410747763	111.0150841	1.37	1.37	28.11	No	31 Januari 2023
515	JUKARIM	Asam Besar, Manis Mala Sub District, Ketapang District, Kalimantan Barat Province, Indonesia	-2.407855813	111.0162803	0.55	0.55	11.29	No	31 Januari 2023
516	JINAM	Asam Besar, Manis Mala Sub District, Ketapang District, Kalimantan Barat Province, Indonesia	-2.397098861	110.9977963	0.62	0.62	12.72	No	31 Januari 2023
517		Asam Besar, Manis Mala Sub District, Ketapang District, Kalimantan Barat Province, Indonesia	-2.400609166	111.0023026	0.82	0.82	16.83	No	31 Januari 2023
518	JANI	Asam Besar, Manis Mala Sub District, Ketapang District, Kalimantan Barat Province, Indonesia	-2.381013017	111.0074834	3.45	3.45	70.79	No	31 Januari 2023
519	HERMAN KLAU SERAN	Asam Besar, Manis Mala Sub District, Ketapang District, Kalimantan Barat Province, Indonesia	-2.418956754	110.9935238	2.20	2.20	45.14	No	31 Januari 2023
520	ARKADIUS HARMONO	Asam Besar, Manis Mala Sub District, Ketapang District, Kalimantan Barat Province, Indonesia	-2.3781898	110.9642741	6.84	6.84	140.36	No	31 Januari 2023
521	GUNARSON	Asam Besar, Manis Mala Sub District, Ketapang District, Kalimantan Barat Province, Indonesia	-2.416939219	111.0150391	3.86	3.86	79.21	No	31 Januari 2023
522	GITO SARDIANTO	Asam Besar, Manis Mala Sub District, Ketapang District, Kalimantan Barat Province, Indonesia	-2.419970015	111.005154	1.00	1.00	20.52	No	31 Januari 2023
523	ERNA	Asam Besar, Manis Mala Sub District, Ketapang District, Kalimantan Barat Province, Indonesia	-2.409619833	111.0273257	2.05	2.05	42.07	No	31 Januari 2023
524	ERMAWANI	Asam Besar, Manis Mala Sub District, Ketapang District, Kalimantan Barat Province, Indonesia	-2.410035968	111.0292326	0.25	0.25	5.13	No	31 Januari 2023
525	DULA	Asam Besar, Manis Mala Sub District, Ketapang District, Kalimantan Barat Province, Indonesia	-2.399251898	110.9765691	0.47	0.47	9.64	No	31 Januari 2023
526	MARSELINUS DEDI	Asam Besar, Manis Mala Sub District, Ketapang District, Kalimantan Barat Province, Indonesia	-2.405449301	111.0168849	0.89	0.89	18.26	No	31 Januari 2023
527		Asam Besar, Manis Mala Sub District, Ketapang District, Kalimantan Barat Province, Indonesia	-2.399975905	111.001718	0.93	0.93	19.08	No	31 Januari 2023
528	DEDEN	Asam Besar, Manis Mala Sub District, Ketapang District, Kalimantan Barat Province, Indonesia	-2.397496922	110.991734	1.76	1.76	36.12	No	31 Januari 2023
529	DAYAT	Asam Besar, Manis Mala Sub District, Ketapang District, Kalimantan Barat Province, Indonesia	-2.395940775	110.993434	2.34	2.34	48.02	No	31 Januari 2023
530	CUCUT	Asam Besar, Manis Mala Sub District, Ketapang District, Kalimantan Barat Province, Indonesia	-2.397750292	110.9937398	0.86	0.86	17.65	No	31 Januari 2023
531	BUDIYANTO	Asam Besar, Manis Mala Sub District, Ketapang District, Kalimantan Barat Province, Indonesia	-2.377882247	110.9637884	0.68	0.68	13.95	No	31 Januari 2023
532		Asam Besar, Manis Mala Sub District, Ketapang District, Kalimantan Barat Province, Indonesia	-2.384211688	110.9706088	1.03	1.03	21.14	No	31 Januari 2023
533	BLASUIS YHOEY	Asam Besar, Manis Mala Sub District, Ketapang District, Kalimantan Barat Province, Indonesia	-2.412678051	110.9958894	1.21	1.21	24.83	No	31 Januari 2023
534	ASTUTI IRAWATI	Asam Besar, Manis Mala Sub District, Ketapang District, Kalimantan Barat Province, Indonesia	-2.412379153	111.0293676	1.69	1.69	34.68	No	31 Januari 2023
535	ANTONIUS BRAKAT	Asam Besar, Manis Mala Sub District, Ketapang District, Kalimantan Barat Province, Indonesia	-2.409719367	111.0255088	0.13	0.13	2.67	No	31 Januari 2023
536	ADRIANUS AJIS	Asam Besar, Manis Mala Sub District, Ketapang District, Kalimantan Barat Province, Indonesia	-2.378172102	111.0140943	1.37	1.37	28.11	No	31 Januari 2023
537	ADRIAN MUHTAR	Asam Besar, Manis Mala Sub District, Ketapang District, Kalimantan Barat Province, Indonesia	-2.378163058	111.0140223	2.27	2.27	46.58	No	31 Januari 2023
538	TRISUSLA MEWANI	Asam Besar, Manis Mala Sub District, Ketapang District, Kalimantan Barat Province, Indonesia	-2.411510645	111.0282612	1.22	1.22	25.03	No	31 Januari 2023
539		Asam Besar, Manis Mala Sub District, Ketapang District, Kalimantan Barat Province, Indonesia	-2.407529563	111.0293045	0.94	0.94	19.29	No	31 Januari 2023
540	ARYADI	Asam Besar, Manis Mala Sub District, Ketapang District, Kalimantan Barat Province, Indonesia	-2.42258957	111.0141847	0.16	0.16	3.28	No	31 Januari 2023
541	FREDYRIKUS NAHAK	Asam Besar, Manis Mala Sub District, Ketapang District, Kalimantan Barat Province, Indonesia	-2.405974078	111.0112253	1.95	1.95	40.01	No	31 Januari 2023
542	ANUAR	Asam Besar, Manis Mala Sub District, Ketapang District, Kalimantan Barat Province, Indonesia	-2.414686378	111.0227116	0.47	0.47	9.64	No	31 Januari 2023
543	JATUYAN	Asam Besar, Manis Mala Sub District, Ketapang District, Kalimantan Barat Province, Indonesia	-2.412931182	111.0251581	1.36	1.36	27.91	No	31 Januari 2023
544	KUAK	Asam Besar, Manis Mala Sub District, Ketapang District, Kalimantan Barat Province, Indonesia	-2.383003366	110.9976255	1.92	1.92	39.40	No	31 Januari 2023
545		Asam Besar, Manis Mala Sub District, Ketapang District, Kalimantan Barat Province, Indonesia	-2.388422687	111.0015021	2.29	2.29	46.99	No	31 Januari 2023
546	LMSI	Asam Besar, Manis Mala Sub District, Ketapang District, Kalimantan Barat Province, Indonesia	-2.387400271	110.991752	3.24	3.24	66.48	No	31 Januari 2023
547		Asam Besar, Manis Mala Sub District, Ketapang District, Kalimantan Barat Province, Indonesia	-2.397873405	111.0047731	3.86	3.86	79.21	No	31 Januari 2023
548	YANTO	Asam Besar, Manis Mala Sub District, Ketapang District, Kalimantan Barat Province, Indonesia	-2.403510629	110.9155137	0.85	0.85	17.44	No	31 Januari 2023
549	APENG	Asam Besar, Manis Mala Sub District, Ketapang District, Kalimantan Barat Province, Indonesia	-2.397379316	110.9893054	1.22	1.22	25.03	No	31 Januari 2023
550	M.KADAFI	Asam Besar, Manis Mala Sub District, Ketapang District, Kalimantan Barat Province, Indonesia	-2.397361267	110.9994423	0.38	0.38	7.80	No	31 Januari 2023
551	INAI	Asam Besar, Manis Mala Sub District, Ketapang District, Kalimantan Barat Province, Indonesia	-2.413066767	110.9701556	1.33	1.33	27.29	No	31 Januari 2023
552		Asam Besar, Manis Mala Sub District, Ketapang District, Kalimantan Barat Province, Indonesia	-2.410913573	110.9721436	2.55	2.55	52.33	No	31 Januari 2023
553	IMI	Asam Besar, Manis Mala Sub District, Ketapang District, Kalimantan Barat Province, Indonesia	-2.415672513	110.9782329	6.55	6.55	134.41	No	31 Januari 2023
554		Asam Besar, Manis Mala Sub District, Ketapang District, Kalimantan Barat Province, Indonesia	-2.416341992	110.9806074	0.47	0.47	9.64	No	31 Januari 2023
555	KORNELIUS HERMANTO	Asam Besar, Manis Mala Sub District, Ketapang District, Kalimantan Barat Province, Indonesia	-2.412125942	110.9734298	1.60	1.60	32.83	No	31 Januari 2023
556		Asam Besar, Manis Mala Sub District, Ketapang District, Kalimantan Barat Province, Indonesia	-2.394330448	110.9958895	1.46	1.46	29.96	No	31 Januari 2023
557	SITI MUSLIMAH	Asam Besar, Manis Mala Sub District, Ketapang District, Kalimantan Barat Province, Indonesia	-2.371060477	110.958293	0.49	0.49	10.05	No	31 Januari 2023
558		Asam Besar, Manis Mala Sub District, Ketapang District, Kalimantan Barat Province, Indonesia	-2.373982703	110.9568898	1.25	1.25	25.65	No	31 Januari 2023

Mutuagung Lestari, is also known Mutu International (MUTU), and has started as inspection, laboratory, and Certification body since 1990. As a private national company and supported with highly committed professionals, MUTU has gained recognition nationally and internationally. Since June 2003, MUTU has received recognition from the Ministry of Agriculture, Forestry, and Fishery of Japan (MAFF) as registered overseas certification body (ROCB). MUTU certify and mark products with Japan agriculture standard (JAS) covering Indonesia, Myanmar, Cambodia, Malaysia, Vietnam, Timor Leste, Philippines, Papua New Guinea and China. MUTU is the first ROCB in Asia. National Accreditation Committee has accredited MUTU as Quality Management System certification body (ISO 9001:2015) and Environmental Management System certification body (ISO 14001:2015). Indonesia Ecolabelling Institute (LEI) has also accredited MUTU as Sustainable Forest Management System certification body, Certification Body of Indonesian Sustainable Palm Oil (ISPO), Since March 2014, MUTU has been accredited by ASI (Accreditation Services International) as a RSPO certification body.

The auditor team for the certification assessment will be led of **Moh. Arif Yusni** from PT Mutuagung Lestari, consist of:

Audit Team	Role/ Area of Requirement	Qualification and Experience
Moh. Arif Yusni	Legal, Social, TBP and Partial Certification	Indonesian citizen. Bachelor of Agriculture, majoring in Plant Protection. He has working experience at Oil Palm Plantation Company in Indonesia. Has attended several trainings, i.e.: ISO 19011, ISO 9001; ISO 14001, SA 8000, RSPO lead auditor, ISPO lead auditor, OHS expert, OHS auditor based on National Government No. 50/2012, SCCS, etc. Has conducting ISPO, RSPO and MSPO audit since 2012 with expertise on best management practices for estate and mill, legality, worker welfare, safety, social, environment, conservation, transparency, long term economic management plan and supply chain for palm oil mill aspects.
Radytio Puspanjana	Environment, HCV, Social, and GHG Aspects	Indonesian Citizen. Bachelor of Agriculture, majoring in Soil Science. Agriculture Faculty. He was working as honorarium Officer at the Riau Province Plantation Agency in the division of huge estate for 1 year. The participated trainings are Survey and Mapping (GIS) Training which was held by National GMIT, ISPO auditor training, ISO 9001/2008 auditor training, ISO 14001/2004 auditor training, IHT Geospatial Information System, IHT High Conservation Value, IHT Environmental Impact Assessment, IHT Green House Gas and RSPO Lead Auditor Course by Checkmark Training. Since 2015 has been following many audit as auditor base on Best Management Practice and Environment.
Kiki Fadli	Worker Welfare and BMP Aspect	Indonesian citizen. Bachelor of Agricultural Engineering, Agricultural Engineering Study Program. Has experience working in the sustainability department in private and state-owned oil palm plantations. Has attended training on New Refreshment Lead Auditor ISPO, Lead Auditor RSPO, General OHS Expert, ISO 9001:2008, ISO 14001:2015, ISO 17021, ISO 17065, HCV, SMK3 and ISH Lead auditor training conducted by RSPO.

PT Mutuagung Lestari invites stakeholders to provide comments (if any) on any of the following matters related to the site for assessment:

- a. Environmental protection within the estate or mill including use of pesticide and waste management.
- b. Biodiversity within the estate and mill
- c. Contribution for local development and opportunities for employment
- d. Provision of housing, sanitation, facility and education support
- e. Other issues related with the assessment

Comments accepted within 30 days from the date of this latter will be considered in the certification assessment. Please include the following details in case we may need to contact for your clarification on any issued raised.

Name : _____
Address : _____
Telephone : _____
Fax : _____

If you wish your comments to be treated confidentiality or remain anonymous, please mark your reply 'CONFIDENTIAL'. Please send your comments to:

Thank you for your comments and feedback.

PT MUTUAGUNG LESTARI

Leonada

Operations Manager

Jl. Raya Bogor Km. 33.5 No. 19
Cimanggis, Depok - Indonesia 16953
Telephone: (+62-21) 8740202
Fax: (+62-21) 87740745/46
agri@mutucertification.com
web : www.mutucertification.com

PERKUMPULAN PETANI MITRA HARAPAN

Sandi Priana

Group Manager

Dusun Cinta Damai, Desa Kalimantan,
Kecamatan Manis Mata, Kabupaten Ketapang,
Provinsi Kalimantan Barat, Indonesia
Telephone: (+62) 853 4818 1547
ppmhketapang@gmail.com
sandipriana1985@gmail.com

Yours faithfully,



mutu
international

Irham Budiman

Director of PT Mutuagung Lestari
