

**Roundtable on Sustainable Palm Oil Certification
R S P O**

[✓] Surveillance

Name of Management Organisation : **Perkumpulan Petani Sawit Swadaya Tambusai Sejahtera**
 Plantation Name : **Perkumpulan Petani Sawit Swadaya Tambusai Sejahtera**
 Location : **Batas Village, Tambusai Barat Village, Sungai Kumango Village, Tambusai Sub-District; Rambah Village, Rambah Hilir Sub-District, Rokan Hulu District, Riau Province, Indonesia**
 Certificate Code : **MUTU-RSPO/169**
 Date of Certificate Issue : 18 April 2022 Date of License Issue : 18 July 2023
 Date of Certificate Expiry : 17 April 2027 Date of License Expiry : 17 April 2024

Assessment	Assessment Date	PT Mutuagung Lestari Auditor	Reviewed by	Approved By
ASA-1	3 – 6 April 2023	Briyogi Shadiwa (Lead Auditor), Firda Tarunajaya, Sabiah Dhiningtyas Utami	Hasiholan Sihombing	Leonada

Assessment	Approved by MUTUAGUNG LESTARI on:
ASA-1	10 July 2023

TABLE OF CONTENT

FIGURE

Figure 1. Location Map of Perkumpulan Petani Sawit Swadaya Tambusai Sejahtera	1
Figure 2. Distributions Farmers Plot Map of Batas Village and Rambah Village	2
Figure 3. Distributions Farmers Plot Map of Tambusai Barat Village	3
Figure 4. Distributions Farmers Plot Map of Sungai Kumango Village	4
Abbreviations Used	5

1.0 SCOPE of the CERTIFICATION ASSESSMENT

1.1 Assessment Standard Used	6
1.2 Organisation Information	6
1.3 Type of Assessment	6
1.4 Location of Plantations	6
1.5 Description of Area Statement	6
1.6 Planting Year and Cycles	7
1.7 Description of Supply Base	7
1.8 Tonnage Product	7
1.9 Other Certification	8

2.0 ASSESSMENT PROCESS

2.1 Assessment Team	9
2.2 Assessment Methodology, Assessment Process and Locations of Assessment	9
2.3 Stakeholder Consultation and Stakeholders Contacted	11
2.4 Determining Next Assessment	11

3.0 ASSESSMENT FINDINGS

3.1 Summary of Assessment Report of the RSPO Certification	12
3.2 Conformity Checklist of Certificate and Trademark Use	38
3.3 Identification of Findings, Corrective Actions, Observations, Opportunity for Improvement and Noteworthy Positive Components	39
3.4 Summary of Arising Issues from Public, and Auditor Verification	46

4.0 CERTIFIED ORGANISATION'S ACKNOWLEDGEMENT OF INTERNAL RESPONSIBILITY

4.1 Formal Signing of Assessment Findings	48
---	----

APPENDICES

1. List of Stakeholders Contacted in the RSPO Certification Process	50
2. Assessment Program	51
3. Smallholders Data	52

Figure 1. Location Map of Perkumpulan Petani Sawit Swadaya Tambusai Sejahtera

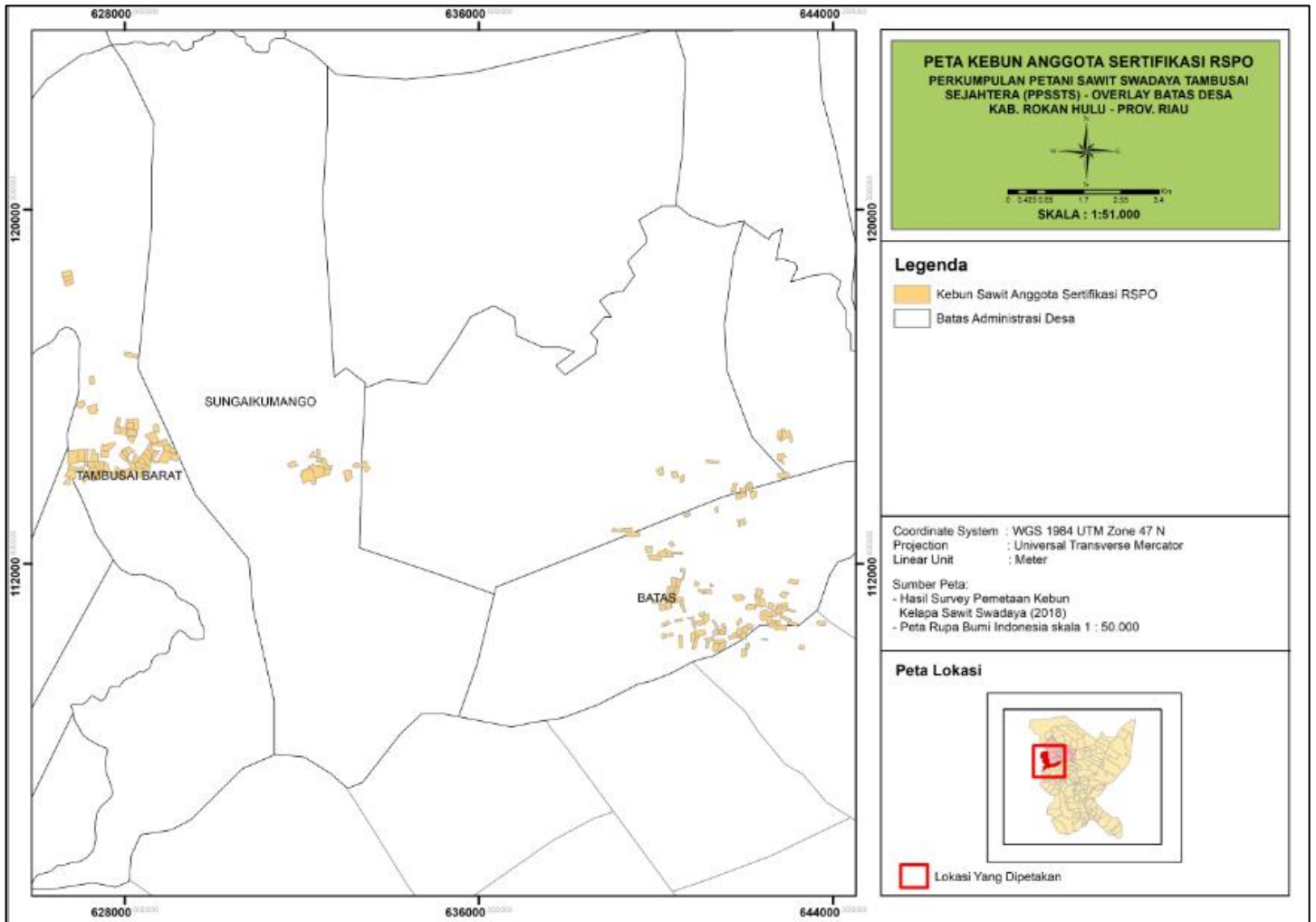


Figure 2. Distributions Farmers Plot Map of Batas Village and Rambah Village

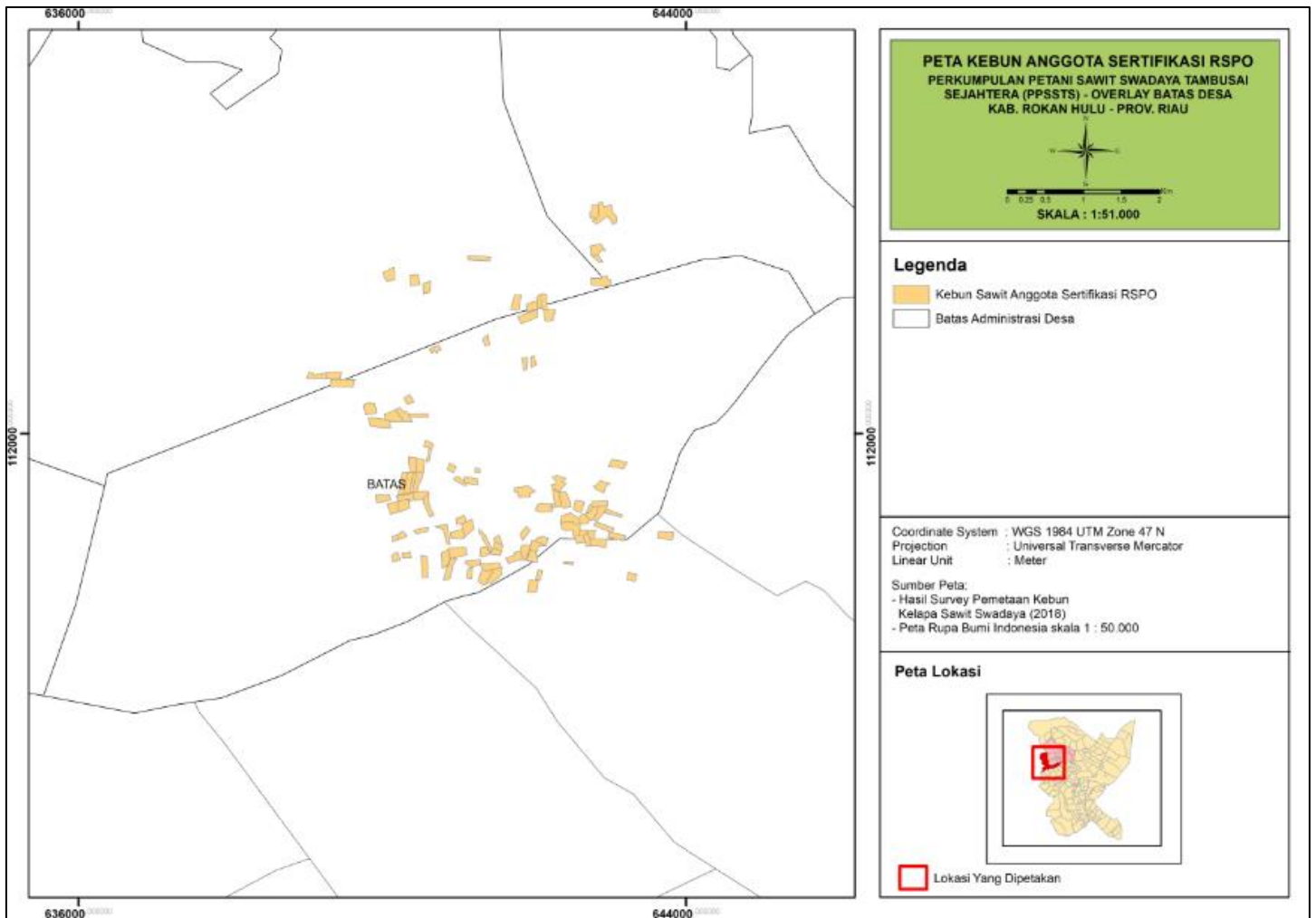


Figure 3. Distributions Farmers Plot Map of Tambusai Barat Village

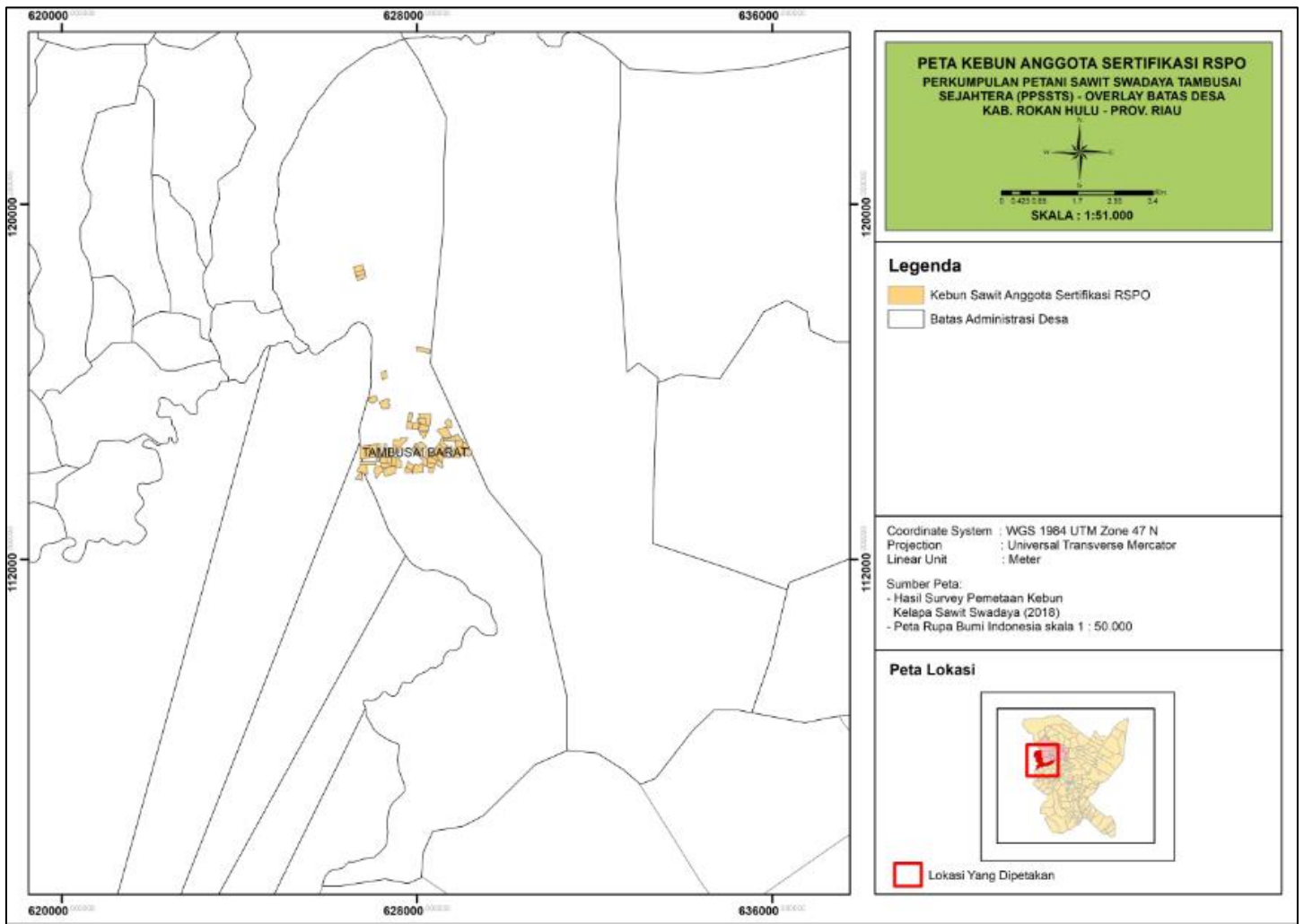
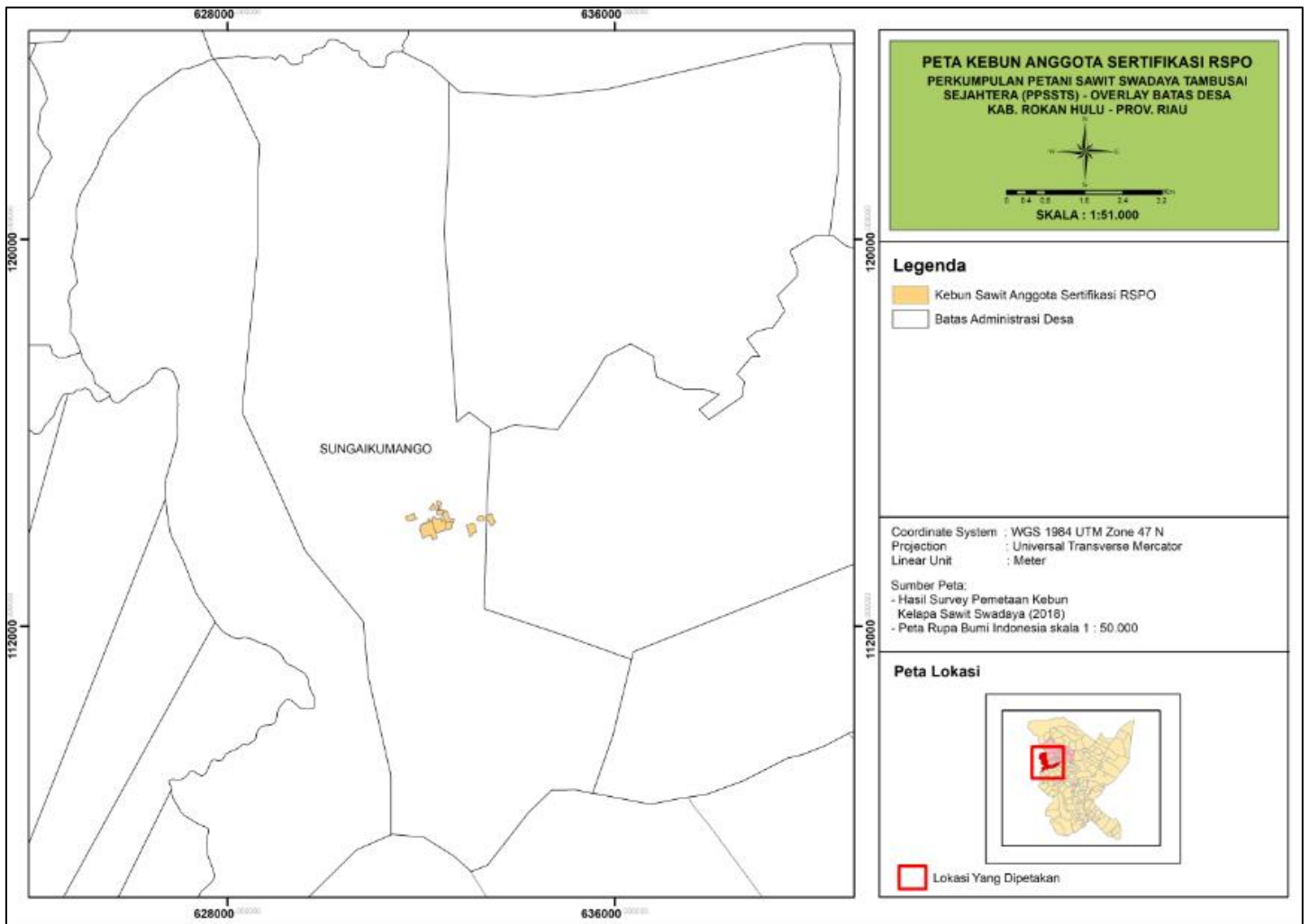


Figure 4. Distributions Farmers Plot Map of Sungai Kumango Village



Abbreviations Used

ALS	:	Assessor Licensing Scheme
BMP	:	Best Management Practice
BPJS	:	<i>Badan Penyelenggara Jaminan Sosial (Social Insurance Agency)</i>
BPN	:	<i>Badan Pertanahan Nasional (National Land Agency)</i>
CB	:	Certification Body
CSR	:	Corporate Social Responsibility
CH	:	Certificate Holder
CPO	:	Crude Palm Oil
CSPO	:	Certified Sustainable Palm Oil
CSPKO	:	Certified Sustainable Palm Kernel Oil
CSPKE	:	Certified Sustainable Palm Kernel Expeller
DLH	:	<i>Dinas Lingkungan Hidup (Environmental Department)</i>
EFB	:	Empty Fruit Bunch
EWS	:	Early warning system
FFB	:	Fresh Fruit Bunches
FPIC	:	Free Prior and Informed Consent
HCV	:	High Conservation Value
LD50	:	<i>Lethal Dose 50</i>
MSDS	:	Material Safety Data Sheet
NCR	:	NonConformity Report
NGO	:	Non-Government Organizations
NPP	:	New Planting Procedure
NPWP	:	<i>Nomor Pokok Wajib Pajak / Tax ID Number</i>
OER	:	Oil Extraction Rate
OFI	:	Opportunity of Improvement
OHS	:	Occupational Health and safety
OHSAS	:	Occupational Health Safety Assessment Series
PIC	:	Person in Charge
PK	:	Palm Kernel
PPE	:	Personal Protection Equipment
PPSSTS	:	Perkumpulan Petani Sawit Swadaya Tambusai Sejahtera
RACP	:	Remediation and Compensation Plan
RSPO	:	<i>Roundtable on Sustainable Palm Oil</i>
RTE	:	Rare, Threatened or Endangered
SCCS	:	Supply Chain Certification Standard
SPKS	:	<i>Serikat Petani Kelapa Sawit</i>
SKGR	:	<i>Surat Keterangan Ganti Rugi (Land Compensation Certificate)</i>
SKT	:	<i>Surat Kepemilikan Tanah (Land Ownership Certificate)</i>
SOP	:	Standard Operational and Procedure
SPPL	:	<i>Surat Pernyataan Pengelolaan Lingkungan (Statement of Environment Management)</i>
STDB	:	<i>Surat Tanda Daftar Budidaya / Business Permit</i>
Walhi	:	Wahana Lingkungan Hidup Indonesia
WWF	:	World Wild Fund

1.0	SCOPE of the CERTIFICATION ASSESSMENT		
1.1	Assessment Standard Used	<ul style="list-style-type: none"> RSPO Certification Systems for Principles & Criteria and RSPO Independent Smallholder Standard Endorsed by the RSPO Board of Governors on 12 November 2020 RSPO Independent Smallholder Standard, Indonesia National Interpretation for the Production of Sustainable Palm Oil 2020, endorsed by the RSPO Board of Governors on 14 February 2022 	
1.2	Organisation Information		
1.2.1	Organisation name listed in the certificate	Perkumpulan Petani Sawit Swadaya Tambusai Sejahtera	
1.2.2	Contact person	Mardoli Pasaribu	
1.2.3	Organisation address and site address	RSPO registered organization: Batas Village, Tambusai Sub District, Rokan Hulu District, Riau Province, Indonesia	
1.2.4	Telephone	+62 821-7228-5505	
1.2.5	Fax	-	
1.2.6	E-mail	perkumpulanpetanisawittambusai@gmail.com	
1.2.7	Web page address	-	
1.2.8	Management Representative who completed the application for certification	Mardoli Pasaribu	
1.2.9	Registered as RSPO member	1-0312-21-000-00 (10 February 2021)	
1.3	Type of Assessment		
1.3.1	Scope of Assessment and Number of Management Unit	There is extension scope become 206 members with total area 610.64 Ha. The previous scope (IC) is 102 smallholders with total area 345.94 Ha.	
1.3.2	Type of certificate	Single	
1.4	Locations of Plantation		
1.4.1	Location of Certification Scope of Supply Base		
	Name of Smallholder Organisation	Location	Coordinate
			Latitude Longitude
	Perkumpulan Petani Sawit Swadaya Tambusai Sejahtera	Batas Village, Tambusai Barat Village, Sungai Kumango Village, Tambusai Sub-District; Rambah Village, Rambah Hilir Sub-District, Rokan Hulu District, Riau Province, Indonesia	N 01° 00' 47.54" E 100° 16' 21.62"
1.5	Description of Area Statement		
1.5.1	Tenure		
	• State	- Ha	
	• Community	610.64 Ha	
1.5.2	Area Statement		
	• Total area	610.64 Ha	
	• Mature area	610.64 Ha	
	• HCV	8.23 Ha	
*Area HCV included Mature Area			

1.6	Planting Year and Cycles			
1.6.1	Age profile of planting year			
	Planting Year	Hectarage (Ha)		
		PPSSTS	Total	
	1994	8.57		8.57
	1995	71.43		71.43
	1996	44.61		44.61
	1997	88.02		88.02
	1998	116.06		116.06
	1999	90.23		90.23
	2000	109.65		109.65
	2001	25.04		25.04
	2002	27.83		27.83
	2003	16.74		16.74
	2004	10.50		10.50
	2005	1.96		1.96
	TOTAL	610.64		610.64
1.6.2	New Planting area after January 2010	- Ha		
1.6.3	Planting Cycle	1 st Cycle		
1.7	Description of Supply Base			
1.7.1	Description of Certification Scope of Supply Base			
	Name of Smallholder Organisation	Total Area (Ha)	Production Area (Ha)	FFB (tonnes/year)
				Yield (tonnes/ha/year)
	Perkumpulan Petani Sawit Swadaya Tambusai Sejahtera	345.94	343.12	6,336.37
	*Data production period of April 2022 to March 2023			
1.8	Tonnage of Product			
1.8.1	Past Annual Claim Certified Product	Last Year Projected Certified Volume (MT)		Last Year Actual Certified Volume (April 2022 to March 2023) (MT)
	• FFB Production	5,700		6,336
	• CSPO Production	-		-
	• CSPKE Production	-		-
	• CSPKO Production	-		-
1.8.2	Product selling			
	Tonnage of selling product		Actual selling product for last year (April 2022 to March 2023) (MT)	
	• IS-CSPO sold as RSPO Credit		1,140	
	• IS-CSPK sold as RSPO Credit		128	
	• IS-CSPKE sold as RSPO Credit		156	
	• FFB sold as RSPO Certified Product		-	
	• FFB sold under another scheme		-	
	• FFB sold as conventional		-	
1.8.3	Estimate Certified FFB Claim			
	Name of Smallholder Organisation	Total Area (Ha)	Production Area (Ha)	FFB (tonnes/year)
				Yield (tonnes/ha/year)

	Perkumpulan Petani Sawit Swadaya Tambusai Sejahtera	610.64	610.64	11,780	19.29		
	<i>*Data projection production period of 12 months periods</i>						
1.8.4	Estimate Certified Palm Product Claim						
	FFB Processed (tonnes/year)	CPO		CSPKE		CSPKO	
		Out put (tonnes)	Extraction (%)	Out put (tonnes)	Extraction (%)	Out put (tonnes)	Extraction (%)
	-	-	-	-	-	-	-
	<i>*Extraction of CSPO, CSPKO and CSPKE from document "A seller Guide to RSPO Credit"</i>						
1.9	Other Certifications						
	Others						-

2.0	ASSESSMENT PROCESS
2.1	Assessment Team
ASA-1	<p>1. Briyogi Shadiwa (Lead Auditor). Indonesian citizen. Associate degree of Oil Palm Plantation, Bogor Agricultural University. He has work experience since 2009 in several private oil palm plantation companies in Indonesia as Assistant Agronomy and Agronomy Quality Control. The trainings that have been attended include: RSPO Lead Auditor Course by Checkmark, ISPO Auditor Training by LPP, Lead Auditor ISO 9001: 2015, RSPO Supply Chain Certification Training Course by Checkmark, Lead Auditor ISO 14001: 2015, SMK3 Awareness, OHSAS 18001 Awareness: 2007, SA 8000 Awareness, ISO 45001: 2018 Awareness and General OHS Expert Training, RSPO ISH Auditor Training by RSPO. In this audit, he verified the Legal, BMP, SCCS and Worker Welfare aspect.</p> <p>2. Firda Tarunajaya (Auditor). Indonesian citizen, graduated in 2010 from the Department of Silviculture, Faculty of Forestry, Bogor Agricultural Institute. He has working experienced as an Operational Staff in an Oil Palm Plantation Company in Indonesia. The training he has followed namely: Lead Auditor RSPO, Lead Auditor ISPO, Quality Management Systems (ISO 9001:2015) by IRCA, Environmental Management Systems (ISO 14001:2015), ISO 19011:2018, ISO 17021:2011, ISO 17065:2012, RSPO ISH Auditor Training by RSPO. In this assessment, he verified the Environment and Social aspect.</p> <p>3. Sabiah Dhiningtyas Utami (Auditor Trainee). Indonesian citizen. Bachelor of Agriculture, Department of Agrotechnology, Padjadjaran University. She has attended ISPO Auditor Training by LPP, ISO IRCA LAC 9001, Awareness ISO 19011:2018, ISO 14001:2015, ISO 45001:2018, ISO 17021:2015, ISO 17065:2012, RSPO Awareness and participated in several IHT in the fields of employment, environment, BMP, and other aspects. Has participated in several simulations of audit activities related to the certification system for sustainable palm oil plantations with labor and social aspects. In this assessment, she verified the Worker Welfare and BMP aspect under the supervision of the Lead Auditor.</p> <p>Curriculum vitae (CV) of the members and the assessment team is available at the PT Mutuagung Lestari office.</p>
2.2	Assessment Methodology, Assessment Process and Locations of Assessment
2.2.1	Figure of person days to implement assessment
ASA-1	<p>Number of auditors: 2 auditors and 1 Auditor Trainee Number of days for ASA-1 Onsite Audit: 4 days Number of working days for ASA-1 Onsite Audit: 8 Working days</p>
2.2.2	Assessment Process
ASA-1	<p>The assessment was conducted by measuring the sufficiency of implementation with the consistency done by the Perkumpulan Petani Sawit Swadaya Tambusai Sejahtera to the requirements of RSPO Independent Smallholder Standard, 6 November 2019 and RSPO Certification Systems for Principles & Criteria and RSPO Independent Smallholder Standard Endorsed by the RSPO Board of Governors on 12 November 2020.</p> <p>The assessment was conducted in three methods: (1) document review, aiming to observe the sufficiency of types or substances from required documents; (2) <i>interview</i>, aiming to obtain more detailed information and cross check the information; and (3) field observation, aiming to observe directly the sufficiency of implementation on site.</p> <p>The scope of last year certification activity is 102 smallholders from 3 villages with an area of 345.94 Ha consisting of 168 smallholder plots. The scope of this certification activity is 206 smallholders from 3 villages with an area of 610.64 Ha consisting of 308 smallholder plots. During this assessment, the auditor team uses formula $(\sqrt{y}) \times (z)$ to calculated the samples. For the existing certified members (168 members) the level of risk is medium ($z = \text{medium risk} = \text{multiplier of } 1.2$), due to some geographical and socioeconomic homogeneity but it is not uniform across the Group and there are no replanting activities. Furthermore, for additional members (38) Members the level of risk is High ($z = \text{high risk} = \text{multiplier of } 2$). Based on explanations above the numbers of smallholders samples are 28 (smallholders from 3 villages, namely Batas Village, Tambusai Barat Village and Sungai Kumango Village).</p> <p>Some opportunities for improvement of the results ASA-1 (MS-B) delivered by the MUTU auditor to the management unit and the results are the subject will be verified at the next assessment phase (ASA-2).</p> <p>Improvement of findings from IC findings were observed by auditors at this ASA-1 (MS-B) assessment. All information</p>

obtained was recorded in Check List of PT Mutuagung Lestari (MUTU) and part of **ASA-1 (MS-B)**.

The opening meeting was held on 03 April 2023. As for the participants who attended the opening meeting included the Chief of PPSSTS, management of PPSSTS and Support Team from SPKS. Closing meeting was held on 6 April 2023 attended by the same participants as the opening meeting. Management of PPSSTS accept all the onsite MS-B audit results.

The assessment program please find Appendix 2

2.2.3 Locations of Assessment

ASA-1

The sampling location consider the issue arose from the review documents, village distribution and stakeholder's consultation that are fundamental and crucial. The smallholders and locations visited by auditor were:

Tambusai Barat Village (12 Members):

- **PPSSTS Member ID C.027.** Field Observation and interview related to best practices, legality, environmental, and worker welfare.
- **PPSSTS Member ID C.032.** Field Observation and interview related to best practices, legality, environmental, and worker welfare.
- **PPSSTS Member ID C.038.** Field Observation and interview related to best practices, legality, environmental, and worker welfare.
- **PPSSTS Member ID C.039.** Field Observation and interview related to best practices, legality, environmental, and worker welfare.
- **PPSSTS Member ID C.040.** Field Observation and interview related to best practices, legality, environmental, and worker welfare.
- **PPSSTS Member ID C.042.** Field Observation and interview related to best practices, legality, environmental, and worker welfare.
- **PPSSTS Member ID C.041.** Field Observation and interview related to best practices, legality, environmental, and worker welfare.
- **PPSSTS Member ID C.036.** Field Observation and interview related to best practices, legality, environmental, and worker welfare.
- **PPSSTS Member ID C.037.** Field Observation and interview related to best practices, legality, environmental, and worker welfare.
- **PPSSTS Member ID C.035.** Field Observation and interview related to best practices, legality, environmental, and worker welfare.
- **PPSSTS Member ID C.043.** Field Observation and interview related to best practices, legality, environmental, and worker welfare.
- **PPSSTS Member ID C.044.** Field Observation and interview related to best practices, legality, environmental, and worker welfare.

Sungai Kumango Village (7 Members):

- **PPSSTS Member ID D.001.** Field Observation and interview related to best practices, legality, environmental, and worker welfare.
- **PPSSTS Member ID D.002.** Field Observation and interview related to best practices, legality, environmental, and worker welfare.
- **PPSSTS Member ID D.003.** Field Observation and interview related to best practices, legality, environmental, and worker welfare.
- **PPSSTS Member ID D.004.** Field Observation and interview related to best practices, legality, environmental, and worker welfare.
- **PPSSTS Member ID D.006.** Field Observation and interview related to best practices, legality, environmental, and worker welfare.
- **PPSSTS Member ID D.005.** Field Observation and interview related to best practices, legality, environmental, and worker welfare.
- **PPSSTS Member ID D.007.** Field Observation and interview related to best practices, legality, environmental, and worker welfare.

	<p>Batas Village (9 Members):</p> <ul style="list-style-type: none"> • PPSSTS Member ID A.052. Field Observation and interview related to best practices, legality, environmental, and worker welfare. • PPSSTS Member ID A.053. Field Observation and interview related to best practices, legality, environmental, and worker welfare. • PPSSTS Member ID A.054. Field Observation and interview related to best practices, legality, environmental, and worker welfare. • PPSSTS Member ID A.048. Field Observation and interview related to best practices, legality, environmental, and worker welfare. • PPSSTS Member ID A.049. Field Observation and interview related to best practices, legality, environmental, and worker welfare. • PPSSTS Member ID A.051. Field Observation and interview related to best practices, legality, environmental, and worker welfare. • PPSSTS Member ID A.056. Field Observation and interview related to best practices, legality, environmental, and worker welfare. • PPSSTS Member ID A.055. Field Observation and interview related to best practices, legality, environmental, and worker welfare. • PPSSTS Member ID A.057. Field Observation and interview related to best practices, legality, environmental, and worker welfare.
2.3	Stakeholder Consultation and Stakeholders Contacted
2.3.1	Summary of stakeholder consultation process.
ASA-1	<p>Consultation of stakeholders for PPSSTS was held by:</p> <ul style="list-style-type: none"> • Public notification from MUTU website on 20 March 2023 • Public consultation meeting with government institution on 05 April 2023 • Public consultation meeting with community including land owner on 04 April 2023 • Public consultation with NGOs (by email) such as Jikalahari, Greenpeace, Perkumpulan Elang and Sawit Watch on 21 March 2023. <p>Numbers of input from stakeholders were clarified by PPSSTS became as part of this report.</p>
2.3.2	Stakeholder contacted
	Please find appendix 1
2.4	Determining Next Assessment
	The next visit (ASA-2) will be conducted eight (8) months to twelve (12) months after Certificate Issued.

3.0 ASSESSMENT FINDINGS

3.1 Summary of Assessment Report of the RSPO Certification

MUTUAGUNG LESTARI has conducted an assessment of **Perkumpulan Petani Sawit Swadaya Tambusai Sejahtera** operation consisting of **two hundred and six (206)** smallholders.

During the assessment, there were one (1) Nonconformities and three (3) opportunities for improvement were identified. Further explanation of the non-conformities raised, and corrective actions taken by the company are provided in section 3.3.

MUTUAGUNG LESTARI found that **Perkumpulan Petani Sawit Swadaya Tambusai Sejahtera** complied with the requirements of **RSPO Independent Smallholder Standard, Indonesia National Interpretation for the Production of Sustainable Palm Oil 2020, endorsed by the RSPO Board of Governors on 14 February 2022 and RSPO Certification Systems for Principles & Criteria and RSPO Independent Smallholder Standard Endorsed by the RSPO Board of Governors on 12 November 2020.**

Therefore, MUTUAGUNG LESTARI Recommends RSPO Certification of compliance is **continued**.

3.1.1 The system requirements for Group Formation and Management (including the Internal Control System) that are only applicable to the group manager.

Ref Std.	VERIFICATION RESULT of MUTU-Certification
A – ICS: Group Entity and Group Management Requirements	
A.1 The Group demonstrates that they are legally formed	
<p>A.1.1 Eligibility The Smallholder Group has determined its management structure in PPSSTS Group Manager for the period 2019-2023 is Mardoli Pasaribu and assisted by several supporting officers, such as Doharman Sirait (Internal Approval Committee Unit), Daulad Sinaga (Internal Audit Unit), David Sirait (K3 Unit) and Iwan Manullang (Sales Unit). One of the tasks is to carry out internal control team activities Such as:</p> <ul style="list-style-type: none"> • Responsible for designing internal assessments, assessment plans, conducting internal assessments according to the specified time. The audit assessment report is reported to the ICS leadership and then discussed at the member meeting. • Responsible for supervising worker safety and health and responsible for recording and receiving member chemical waste. • Responsible for fruit marketing, recap the amount of FFB production on a regular basis. <p>MS A Same as Eligibility and based on documents verifications it was known if there is no change of Group Manager.</p> <p>MS B Same as Eligibility</p> <p>A.1.2 Eligibility The certificate holder has a clearly legal entity such as minutes of association establishment on 5 March 2020. After that, the Association has Deed of Establishment of the <i>Perkumpulan Petani Sawit Swadaya Tambusai</i> No. 7 dated 5 March 2020 by notary named Langgeng Putra, SH. M.KN. The amendment of deed has been registered in Ministry of Law and Human Rights with registration No. AHU-0003686.AH.01.07.TAHUN 2020 concerning the Legalization of the Establishment of the <i>Perkumpulan Petani Sawit Swadaya Tambusai</i> dated 30 April 2020.</p> <p>Based on latest assessment, there has been no change related to the legality owned.</p> <p>MS A Same as Eligibility</p>	

MS B

Same as Eligibility

A.1.3

Eligibility

The Smallholder Group has a policy related to the requirements to become a member in the recruitment procedure on:

- SOP Requirements for PPSSTS Members (No.Doc.: 001/SOP/ICS/PPSSTS/III/2020) dated March 2020
- SOP Exit & Enter Members (No.Doc.: 009/SOP/ICS/PPSSTS/VI/2020) dated June 2020
- SOP on Sanctions for Members of the Tambusai Sejahtera Independent Farmers Association (No.Doc.: 002/SOP/ICS/PPSSTS/III/2020) dated March 2020.

The document describes the requirements for become a member, including:

- Submit photocopies of KTP and KK
- Comply with PPSSTS AD/ART
- Submit Land Legality (for those who have oil palm plantations)
- Fill out the member registration form.
- Fill out the RSPO certification candidate registration form (for those who are willing and have oil palm plantations)
- Bring all the required requirements.

MS A

Same as Eligibility

MS B

Same as Eligibility

A.1.4

Eligibility

The Smallholder Group shows proof of ratification of the requirements for smallholder members, for example in the recording of the smallholder's statement on behalf of Fauzi Sochi Zebua and Mian Boru Marbun which was signed by him on 5 February 2022. The recording contains a statement of the commitment of the smallholder before becoming a member, for example:

- Ensure that there is no forced labor
- Participate in required training and actively participate in smallholder groups.
- Respect workers' rights
- Protect conservation areas
- No burning
- Making effort to apply best management practices for oil palm plantations.
- Resolve all land disputes.
- Ensure there is no child labor practice in plantation operations
- Minimizing and controlling erosion.
- No discrimination, harassment or violence on the farm.

MS A

Based on the results of the document review at the Group Manager office. The auditor found on a sample basis that 28 members of Batas, Tambusai Barat and Sungai Kumango Village had signed a commitment to comply with the RSPO principles as well as the requirements of other members, especially new members. This was also confirmed by the results of field interviews in farmer group such as Batas, Tambusai Barat and Sungai Kumango Village where the smallholders/member admitted that they had signed all the requirements.

MS B

Based on the results of interviews with 28 samples of smallholders in the field, smallholders who are members of Groups are able to demonstrate the requirements to become members of Smallholder Groups, starting from the need for land ownership documents to commitment to implementing the RSPO principles.

Status: Comply

A.2**The Group Manager is responsible for managing the Group for certification****A.2.1****Eligibility**

The ICS Manager has compiled and planned a work program to be carried out together with the core management which is then disseminated to all members or farmers. PPSSTS shows the 2022 and 2023 period work programs that have been approved by the ICS Manager. Based on the results of interviews with the ICS Manager, it is known that the form of control over the implementation of work program activities is carried out by holding regular meetings every month with the core management. This is done to ensure that every planned activity is carried out and to follow up if it is felt that there are still things that are lacking every month.

Based on a review of work program documents, there are a total of 23 work programs implemented during the 2022 and 2023 periods. The following are some examples of work programs implemented during 2022 and planned work program activities in 2023, namely data collection and registration of new members, new member's estate mapping, planting estate boundary stakes, training and socialization to farmers (regarding SOP/Policy, RSPO Premium, GAP training, employment training, etc.), data collection in farmer's notebooks related to harvesting activities, use of fertilizers and herbicides, plant maintenance, etc.

Based on the results of interviews with all members of the sample regarding the implementation of the ICS work program, it was stated that all needs related to PPSSTS could be discussed and concluded in the results of the monthly meeting.

MS-A

PPSSTS always makes documentation stating that group members have officially joined the group. For example, when farmers start to join, they will fill out a member registration form and provide copies of the identity card, family card and land ownership documents. Then, the smallholders will sign a smallholder statement containing the rights and obligations of the members as well as the smallholder's commitment to complying with the RSPO standard. For example, the registration document and the signing of the Planters Declaration between PPSSTS and farmers with the initials RJP from Sungai Kumango Village on January 3rd, 2020.

Based on the results of document review and interviews with sample members, information was obtained that individual members can show a copy of the agreement with the ICS Manager. Then, the ICS Manager keeps the original work agreement in the office. The contract agreement includes the agreement of farmer members to comply with all applicable rules in PPSSTS. Compliance with PPSSTS rules by members is assessed through inspection/monitoring, for example monitoring the use of PPE on September 14th, 2022. An annual internal audit activity is also carried out to evaluate the implementation of compliance with the RSPO standard.

Based on field observations, it is known that individual members can demonstrate compliance with PPSSTS rules. As evidence, farmers can describe the RSPO process, RSPO premium income, prohibition of poaching, no burning during land clearing, safe working practices, waste management and others.

MS-B

Same as MS-A

A.2.2**Eligibility**

Based on interviews with the ICS Manager, it is known that the ICS Manager has an understanding of the RSPO standard for Independent Smallholders. During the audit, the ICS Manager can show evidence that all members comply with the RSPO standard for independent smallholders. Steps or efforts taken for example:

- Conducting data collection, registration and land mapping for new farmers
- Periodic training activities for members/farmers and ICS administrators
- Providing logbooks of estate activities to each farmer

PPSSTS has formed an organization for operational management as well as job responsibilities. The ICS organization consists of the ICS Manager, Internal Approval Committee Unit, Registration Unit, Internal Audit Unit, OHS Unit and Sales Unit.

Based on interviews with ICS management, it is known that they are able to explain the responsibilities of each division and are competent in managing groups.

MS-A

Based on interviews with the ICS Manager, information was obtained that there were no changes regarding the management and requirements for certification from the previous audit. The ICS Manager can explain related to RSPO certification and certification requirements. The ICS Manager also easily manages members during audit activities and provides the necessary information for certification. During the audit, the ICS Manager demonstrated understanding of RSPO standards and implementation of the PPSSTS rules. Based on document verification and interviews with ICS management and sample members, information was obtained that there was some evidence that the group manager had tried to comply with the RSPO Independent Smallholders, for example:

- Establish a structured organization and job descriptions and responsibilities.
- Conduct regular meetings regarding preparation for certification with discussion material on follow-up to the RSPO Program and preparation for external audits.
- Installing sign boards on farmer's land/plots, for example boards prohibiting spraying on riparian, protected species of flora and fauna, safe working methods, harvesting standards, prohibition of land burning, etc.
- Periodic field visits to farmer group fields to ensure all members comply with RSPO standards.

MS-B

Same as MS-A

A.2.3**Eligibility**

PPSSTS has an annual training plan aimed at ICS members and administrators as stated in the PPSSTS Work Program document for the period 2022 and 2023, where the plan consists of 23 activities that contain RSPO Independent Smallholder Standards such as training on GAP, IPM, OHS, employment, etc.

MS-A

PPSSTS has implemented a phased approach to ensure members understand the Independent Smallholder Standard through training activities. PPSSTS shows documents on the realization of training/outreach to members in 2022, which are as follows:

- Socialization on the use of pesticides which was held on August 27th, 2022, and was attended by 32 participants.
- Training on the mechanism for determining the price of FFB which was held on October 15th, 2022, and was attended by 22 participants.
- Employment training, which was held on October 15th, 2022, and was attended by 22 participants.
- HCV outreach, which was held on August 27th, 2022, and was attended by 32 participants.
- GAP training (maintenance of TBM, TM, germination and harvesting) which was held on August 27th, 2022, and was attended by 32 participants.
- GAP training (fertilizing and spraying which was held on July 2nd, 2022, and was attended by 37 participants.
- HIRAC socialization, which was held on August 27th, 2022, and was attended by 32 participants.
- IPM training, which was held on July 2nd, 2022, and was attended by 37 participants.
- Training on filling in farmer's notebooks (production, pruning and harvest reports) which was held on September 23rd, 2022, and was attended by 25 participants.
- Socialization of the RSPO and ISPO P&C, which was held on September 23rd, 2022, and was attended by 25 participants.
- Group financial planning training, which was held on September 23rd, 2022, and was attended by 25 participants.
- FPIC socialization, which was held on January 30th, 2022, and was attended by 29 participants.
- Socialization of the supply chain and distribution of RSPO credit incentives which was held on January 30th, 2022, and was attended by 29 participants.
- Socialization on the prohibition of sexual harassment and violence which was held on January 30th, 2022, and was attended by 29 participants.
- Socialization on restrictions on the use of fire, which was held on October 15th, 2022, and was attended by 22 participants.

MS-B

Based on interviews with sample farmers, information was obtained that all members had attended training, for example GAP training related to harvesting work techniques, fertilizing, spraying or other training/socialization activities. Smallholders can also prove their understanding of the RSPO Independent Smallholder Standard, group management and certification requirements such as those related to oil palm cultivation management, environmental management, social welfare of workers, FFB sales operations and others.

Then based on the results of document verification, it is known that PPSSTS has documented every training attended by members listed in the minutes of training/socialization accompanied by documentation and attendance.

	Status: Comply	
B – ICS: Policies and Management		
B.1		
The group Internal Control System contains documented policies and procedures for operational management.		
B.1.1		
Eligibility		
<p>Associations has formed Internal Control System (ICS) organization for operational management as well as role and function, which informed on <i>Surat Keputusan Internal Control System Tentang Pembentukan Unit-Unit ICS</i>. Furthermore, the group Internal Control System already has a documented policies and procedures for operational management such as:</p> <ul style="list-style-type: none"> • SOP for exiting and entering members with the number 011/SOP/ICS/PPSSTS/VI/2020 in June 2020 which explains the procedures for exiting and entering PPSSTS members. • SOP listed in the Member Sanctions SOP Number 002/SOP/ICS/PPSSTS/III 2020 in March 2020 which explains the sanctions for members who do not follow the PPSSTS rules. • procedure for carrying out internal audits listed in the internal audit procedure Number 007/SOP/ICS/PPSSTS/III/2021 in March 2021 which explains that internal audits are carried out once a year. 		
MS A & MS B		
<p>Internal audit activities have been carried out 6 times, from 23 April 2022 to 21 January 2023 where the scope of the audit includes knowledge of members, completeness of member files, training of members, implementation of HCV management, to aspects of OHS. The audit was conducted for 206 members (100%), including the new members. From the results of the internal audit, it is known that there is a non-conformity in the form of 6 major NCs, namely related to the waste storage area and the completeness of PPE. The management and farmers showed the record of corrective action on the non-conformities on 2 February 2023.</p>		
B1.2		
Eligibility, MS A and MS B		
<p>Regarding member information, it is contained in the verification and assessment form for new members which has been signed by each member. The document contains information related to the legality of land ownership, land area, year of planting, signed smallholder declaration (sustainability commitment), ownership status to location assessment and completeness of registration files. This document is also summarized in the 2023 Profile of Members of the Perkumpulan Petani Sawit Swadaya Tambusai.</p> <p>In addition, the certificate holder also manages the production data for each member which is stored in the group manager office. The production data contains the results of production and sales made by each member.</p>		
	Status: Comply	
C – ICS: Group business planning		
C.1		
The group has a group Business Plan prepared with the participation and contributions of group members.		
C.1.1		
Eligibility		
<p>The palm oil smallholder group has a program plan in the <i>Rencana Kerja Perkumpulan Sawit Swadaya Tambusai Tahun 2023</i> which was made in January 2023. The work program contains work plans for each department and management, for example:</p> <ul style="list-style-type: none"> • Farmer's Estate Expansion Plan • Trainings • Submission of STDB and SPPL • Internal Audits • Monitoring members every month • Socialization of RSPO Premiums • Dissemination of Procedures and Policies. • Monitoring of HCV areas. • Monitoring PPE. <p>The program also stipulates related to productivity aspects, such as production plan for 2023/2024, where production is estimated to reach 11,782.32 tons with a yield of 19.29 tons/ha.</p>		

MS A

The Group Manager shows the realization of plans for 2022 that were previously planned, for example training activities and also internal audits. The Group Manager meet every month to discuss the realization of the annual plan, if there are activities that have not been carried out then at the monthly briefing the analysts will allocate these activities in another month, this can be seen from the change in the HCV training realization which changed from semester 1 to semester 2 in 2022.

MS B

The association has documents related to financial planning in the *Rencana Kerja Perkumpulan Sawit Swadaya Tambusai Tahun 2023*. In the plan, the association has an estimated profit of the association for the next year, the profit set aside, the calculation operational costs, office facilities, training costs, consumption costs and general meeting needs of members. The Group Manager has also been able to show records of the use of annual operational costs from the sale of product credit as a support for good financial existence for the financial group.

	Status: Comply	
--	-----------------------	--

C.2

The ICS of the group is integrated with the Group's Management Plan.

C.2.1
Eligibility

The palm oil smallholder Group Manager has a program plan in the *Rencana Kerja Perkumpulan Sawit Swadaya Tambusai Tahun 2023* which was made in January 2023. The work program contains work plans for each department and management, for example:

- Farmer's Estate Expansion Plan
- Trainings
- Submission of STDB and SPPL
- Internal Audits
- Monitoring members every month
- Socialization of RSPO Premiums
- Dissemination of Procedures and Policies.
- Monitoring of HCV areas.
- Monitoring PPE.

MS A

The organization is also able to show evidence of implementation related to detailed annual and monthly activity plans, for example:

- Training on FFB Pricing Mechanism in Tambusai Barat Village on October 15, 2022.
- Socialization on the use of pesticides at the Tambusai Sejahtera Self-help Office on August 27, 2022.

These trainings are aimed at increasing the production of members and tracking sales mechanisms for each farmer.

MS B

Based on field visits and interviews with members of the group members, it is known that smallholder have a fairly good awareness of the RSPO, best management practices, HCV management, and social welfare is quite good. Members can also demonstrate their understanding of some aspects of the RSPO, for example on implementing OHS in the field or best management practices.

	Status: Comply	
--	-----------------------	--

D – ICS: Group Trading System for Certified Volumes
D.1

The group has a procedure and system in place for the tracking of FFB.

D.1.1
Eligibility, MS A and MS B

The Group Manager has procedures related to monitoring and controlling FFB production and sales records in the SOP *Buku Catatan Petani* (No. Doc. 014/SOP/ICS/PPSSTS/MII/2020, date July 2020). This procedure aims to ensure that the recording of certified production and the sale of each farmer's FFB can be properly managed. The following are some points explained in the procedure:

- Farmer's record book includes (production report, pruning, spray and fertilizer)

- Recap of Spraying Activities, Pruning/Sprout Recap.
- The farmer's log book is filled in by farmer members of PPSSTS.
- Farmers' logbooks are collected through the ICS administrators.
- The PPSSTS management including the ICS recaps the data submitted by the farmers.

Based on the results of interviews with farmers in the field, the logbook will be checked by management every 3 months in order to ensure that production and land management records are in accordance with RSPO directives. The farmers also informed that there was no coercion from the management to physically sell certified FFB.

The group manager recapitulates all FFB production sales data every month from the records shown by each farmer group and stored in the office.

Currently, based on verification, sales are made on credit. Smallholder groups do not physically sell certified products.

	Status: Comply	
--	-----------------------	--

D.2 The group documents and implements a system for the tracking of FFB.

D.2.1 Eligibility, MS A and MS B

The Group Manager has managed records of production and sales of FFB produced by all its member smallholders in recording the achievement of performance targets in 2022. The record contains information on smallholder production in 2022. For example, the Association Group shows a record annual production for the period 2022/2023 is 12,218 ton. In addition to total production, there are also production records for each smallholder's land.

Production data is recorded in the farmer's book and monitored monthly by the cooperative to ensure it is recorded.

Based on interviews with smallholders in the Batas, Tambusai Barat and Sungai Kumango Village, they have learned to always record and ensure the shipment/sale of FFB is certified FFB originating from land that has been registered with the smallholder group.

	Status: Comply	
--	-----------------------	--

D.3 The group has a procedure and system for premium distribution.

D.3.1 Eligibility

The Association has established the SOP for Incentive Credit Distribution (No. 017/SOP/ICS/PPSSTS/VI/2021) June 2021, which aims to be a guide/guideline regarding the distribution of RSPO certification funds, with the following explanation:

- 25% of sales proceeds are allocated for the 1st year Surveillance Audit.
- 1% contribution to the village
- 20% of sales proceeds are allocated for the operational costs of the ICS management.
- 6% of sales proceeds are allocated to Cooperative cash.
- 48% is distributed to cooperative members according to the needs and agreement of the members discussed in the forum together.

The premiums used and the agreement is recorded and communicated to the group members

MS A

The group manager has shown the recording of the distribution of premiums in the Minutes of Benefit and PPE handover documents to all PPSSTS members. In the recording, there is information that premiums will be distributed in cash to all members on 22 November 2022 (Batas Village) and 7 December 2022 (Tambusai Barat Village & S. Kemango Village). The recording is also accompanied by documentation of activities and a list of attendance of all farmers.

Based on the results of interviews with smallholders of Batas, Tambusai Barat and Sungai Kumango Village, there are no complaints related to the distribution of premiums.

MS B Same as MS A

	Status: Comply	
--	-----------------------	--

3.2.2 The Principal Criteria and Indicators that are applicable to both smallholders (as individual group members) and group managers.

Ref Std.	VERIFICATION RESULT of MUTU-Certification																																																						
PRINCIPLE 1: OPTIMISE PRODUCTIVITY, EFFICIENCY, POSITIVE IMPACTS AND RESILIENCE																																																							
1.1 Smallholders establish a legal entity which has organizational capacity to comply with the RSPO Independent Smallholder Standard.																																																							
<p>Eligibility, MS A and MS B</p> <p>Smallholders already have an institution in participating in RSPO certification, namely Perkumpulan Petani Sawit Swadaya Tambusai Sejahtera. PPSSTS already has a Deed of Establishment No. 07 dated March 5, 2020, made by Notary Langgeng Putra, SH, M.Kn and has been approved in accordance with the Decree of the Minister of Law and Human Rights of the Republic of Indonesia Number: AHU-0003686.AH.01.07.Tahun 2020 on April 30, 2020, concerning Ratification of the Legal Entity of the Perkumpulan Petani Sawit Swadaya Tambusai Sejahtera</p> <p>The Group Manager has kept all complete data for each member available in the office. Document the member data. The document contains information related to the legality of land ownership, land area, year of planting, signed smallholder declaration (sustainability commitment), ownership status to location assessment and completeness of registration files. All documents are signed by each member without any coercion. The farmer groups already have the legality of establishment.</p> <p>The Association has an Internal Control System (ICS) which consists of:</p>																																																							
<table border="1" style="width: 100%; border-collapse: collapse;"> <thead> <tr style="background-color: #ffcc00;"> <th style="text-align: center;">Procedure Name</th> <th style="text-align: center;">No. Document</th> </tr> </thead> <tbody> <tr><td><i>Persyaratan dan Pendaftaran Anggota</i></td><td>001/SOP/ICS/PPSSTS/III/2020</td></tr> <tr><td><i>Sanksi Anggota</i></td><td>002/SOP/ICS/PPSSTS/III/2020</td></tr> <tr><td><i>Komunikasi Eksternal</i></td><td>003/SOP/ICS/PPSSTS/III/2020</td></tr> <tr><td><i>Pengelolaan Areal Sempadan Sungai</i></td><td>004/SOP/ICS/PPSSTS/IV/2020</td></tr> <tr><td><i>Penunjukan Manager ICS</i></td><td>005/SOP/ICS/PPSSTS/IV/2020</td></tr> <tr><td><i>Audit Internal</i></td><td>006/SOP/ICS/PPSSTS/III/2021</td></tr> <tr><td><i>Identifikasi Aspek K3</i></td><td>007/SOP/ICS/PPSSTS/VIII/2020</td></tr> <tr><td><i>Pengalihan Hak Legalitas & Penyelesaian Konflik</i></td><td>008/SOP/ICS/PPSSTS/III/2021</td></tr> <tr><td><i>Keluar & Masuk Anggota</i></td><td>009/SOP/ICS/PPSSTS/VI/2020</td></tr> <tr><td><i>SOP Tenaga Kerja</i></td><td>010/SOP/ICS/PPSSTS/VI/2021</td></tr> <tr><td><i>Pengelolaan Limbah B3</i></td><td>011/SOP/ICS/PPSSTS/II/2021</td></tr> <tr><td><i>Pelatihan dan Sosialisasi</i></td><td>012/SOP/ICS/PPSSTS/V/2020</td></tr> <tr><td><i>Pembuatan dan Pemasangan Patok Kavling</i></td><td>013/SOP/ICS/PPSSTS/II/2021</td></tr> <tr><td><i>Buku Catatan Petani</i></td><td>014/SOP/ICS/PPSSTS/VII/2020</td></tr> <tr><td><i>Perlindungan NKT - SKT</i></td><td>015/SOP/ICS/PPSSTS/VIII/2020</td></tr> <tr><td><i>Pengelolaan Kebun GAP</i></td><td>016/SOP/ICS/PPSSTS/II/2021</td></tr> <tr><td><i>Pembagian Insentif Kredit</i></td><td>017/SOP/ICS/PPSSTS/VI/2021</td></tr> <tr><td><i>Penanganan Kebakaran Lahan</i></td><td>018/SOP/ICS/PPSSTS/IV/2021</td></tr> <tr><td><i>Pengendalian Hama dan Penyakit</i></td><td>019/SOP/ICS/PPSSTS/VI/2021</td></tr> <tr><td><i>Sistem Pengambilan Keputusan</i></td><td>020/SOP/ICS/PPSSTS/IV/2020</td></tr> <tr><td><i>Penanganan Keselamatan dan Kesehatan Kerja</i></td><td>021/SOP/ICS/PPSSTS/II/2021</td></tr> <tr><td><i>Pruning</i></td><td>022/SOP/ICS/PPSSTS/II/2021</td></tr> <tr><td><i>Pemetaan Lahan Petani</i></td><td>023/SOP/ICS/PPSSTS/II/2021</td></tr> <tr><td><i>Mekanisme Penyampaian Keluhan</i></td><td>024/SOP/ICS/PPSSTS/V/2021</td></tr> <tr><td><i>K3</i></td><td>026/SOP/ICS/PPSSTS/VI/2021</td></tr> <tr><td><i>Keterbukaan Informasi dan Kelengkapan Data</i></td><td>026/SOP/ICS/PPSSTS/VI/2021</td></tr> </tbody> </table>		Procedure Name	No. Document	<i>Persyaratan dan Pendaftaran Anggota</i>	001/SOP/ICS/PPSSTS/III/2020	<i>Sanksi Anggota</i>	002/SOP/ICS/PPSSTS/III/2020	<i>Komunikasi Eksternal</i>	003/SOP/ICS/PPSSTS/III/2020	<i>Pengelolaan Areal Sempadan Sungai</i>	004/SOP/ICS/PPSSTS/IV/2020	<i>Penunjukan Manager ICS</i>	005/SOP/ICS/PPSSTS/IV/2020	<i>Audit Internal</i>	006/SOP/ICS/PPSSTS/III/2021	<i>Identifikasi Aspek K3</i>	007/SOP/ICS/PPSSTS/VIII/2020	<i>Pengalihan Hak Legalitas & Penyelesaian Konflik</i>	008/SOP/ICS/PPSSTS/III/2021	<i>Keluar & Masuk Anggota</i>	009/SOP/ICS/PPSSTS/VI/2020	<i>SOP Tenaga Kerja</i>	010/SOP/ICS/PPSSTS/VI/2021	<i>Pengelolaan Limbah B3</i>	011/SOP/ICS/PPSSTS/II/2021	<i>Pelatihan dan Sosialisasi</i>	012/SOP/ICS/PPSSTS/V/2020	<i>Pembuatan dan Pemasangan Patok Kavling</i>	013/SOP/ICS/PPSSTS/II/2021	<i>Buku Catatan Petani</i>	014/SOP/ICS/PPSSTS/VII/2020	<i>Perlindungan NKT - SKT</i>	015/SOP/ICS/PPSSTS/VIII/2020	<i>Pengelolaan Kebun GAP</i>	016/SOP/ICS/PPSSTS/II/2021	<i>Pembagian Insentif Kredit</i>	017/SOP/ICS/PPSSTS/VI/2021	<i>Penanganan Kebakaran Lahan</i>	018/SOP/ICS/PPSSTS/IV/2021	<i>Pengendalian Hama dan Penyakit</i>	019/SOP/ICS/PPSSTS/VI/2021	<i>Sistem Pengambilan Keputusan</i>	020/SOP/ICS/PPSSTS/IV/2020	<i>Penanganan Keselamatan dan Kesehatan Kerja</i>	021/SOP/ICS/PPSSTS/II/2021	<i>Pruning</i>	022/SOP/ICS/PPSSTS/II/2021	<i>Pemetaan Lahan Petani</i>	023/SOP/ICS/PPSSTS/II/2021	<i>Mekanisme Penyampaian Keluhan</i>	024/SOP/ICS/PPSSTS/V/2021	<i>K3</i>	026/SOP/ICS/PPSSTS/VI/2021	<i>Keterbukaan Informasi dan Kelengkapan Data</i>	026/SOP/ICS/PPSSTS/VI/2021
Procedure Name	No. Document																																																						
<i>Persyaratan dan Pendaftaran Anggota</i>	001/SOP/ICS/PPSSTS/III/2020																																																						
<i>Sanksi Anggota</i>	002/SOP/ICS/PPSSTS/III/2020																																																						
<i>Komunikasi Eksternal</i>	003/SOP/ICS/PPSSTS/III/2020																																																						
<i>Pengelolaan Areal Sempadan Sungai</i>	004/SOP/ICS/PPSSTS/IV/2020																																																						
<i>Penunjukan Manager ICS</i>	005/SOP/ICS/PPSSTS/IV/2020																																																						
<i>Audit Internal</i>	006/SOP/ICS/PPSSTS/III/2021																																																						
<i>Identifikasi Aspek K3</i>	007/SOP/ICS/PPSSTS/VIII/2020																																																						
<i>Pengalihan Hak Legalitas & Penyelesaian Konflik</i>	008/SOP/ICS/PPSSTS/III/2021																																																						
<i>Keluar & Masuk Anggota</i>	009/SOP/ICS/PPSSTS/VI/2020																																																						
<i>SOP Tenaga Kerja</i>	010/SOP/ICS/PPSSTS/VI/2021																																																						
<i>Pengelolaan Limbah B3</i>	011/SOP/ICS/PPSSTS/II/2021																																																						
<i>Pelatihan dan Sosialisasi</i>	012/SOP/ICS/PPSSTS/V/2020																																																						
<i>Pembuatan dan Pemasangan Patok Kavling</i>	013/SOP/ICS/PPSSTS/II/2021																																																						
<i>Buku Catatan Petani</i>	014/SOP/ICS/PPSSTS/VII/2020																																																						
<i>Perlindungan NKT - SKT</i>	015/SOP/ICS/PPSSTS/VIII/2020																																																						
<i>Pengelolaan Kebun GAP</i>	016/SOP/ICS/PPSSTS/II/2021																																																						
<i>Pembagian Insentif Kredit</i>	017/SOP/ICS/PPSSTS/VI/2021																																																						
<i>Penanganan Kebakaran Lahan</i>	018/SOP/ICS/PPSSTS/IV/2021																																																						
<i>Pengendalian Hama dan Penyakit</i>	019/SOP/ICS/PPSSTS/VI/2021																																																						
<i>Sistem Pengambilan Keputusan</i>	020/SOP/ICS/PPSSTS/IV/2020																																																						
<i>Penanganan Keselamatan dan Kesehatan Kerja</i>	021/SOP/ICS/PPSSTS/II/2021																																																						
<i>Pruning</i>	022/SOP/ICS/PPSSTS/II/2021																																																						
<i>Pemetaan Lahan Petani</i>	023/SOP/ICS/PPSSTS/II/2021																																																						
<i>Mekanisme Penyampaian Keluhan</i>	024/SOP/ICS/PPSSTS/V/2021																																																						
<i>K3</i>	026/SOP/ICS/PPSSTS/VI/2021																																																						
<i>Keterbukaan Informasi dan Kelengkapan Data</i>	026/SOP/ICS/PPSSTS/VI/2021																																																						

Persiapan lahan, penanaman ulang kebun sawit

027/SOP/ICS/PPSSTS/VI/2021

The organization is also able to show evidence of implementation related to detailed annual and monthly activity plans, for example:

- Work Program Evaluation Meeting on January 10, 2023.
- Determination of Business Plan on April 4, 2023.

Based on the latest assessment, currently in the 2023 period there are 206 members.

All members have completed training in stages, including training on palm oil pricing mechanisms, financial management, and best practices for smallholder organizations as well as socializing pricing mechanisms for smallholder organizations. For example, Training on the mechanism for determining the price of FFB on 15 October 2022 in Tambusai Barat Village by the SPKS Program Manager for PPSSTS members attended by 26 planters and GAP Training: maintenance of Immature, Mature, *Pruning* and Harvesting on 27 August 2022 at the PPSSTS office by Jikalahari staff to PPSSTS members which was attended by 32 smallholders.

Smallholder groups operating in accordance with best management practices for groups, including Fair and transparent decision-making and governance, and Sustainable financial management.

The association has provided evidence in the form of minutes of agreement on the distribution of premiums from RSPO credit incentives, which were held on 2 November 2022 attended by association officials, ICS and farmer representatives. The matters agreed upon include:

- Each farmer member is given Personal Protective Equipment (goggles, gloves, helmet, apron, egrek gloves, boots and masks).
- Each farmer member is given Rp. 500,000.,
- The distribution is equally distributed to all members regardless of the area of land owned.
- Proceeds from the RSPO credit incentives are used for the association's business development

Based on the results of the document review at the Group Manager office, the auditor found on a sample basis that 28 sample members had signed a commitment to comply with the RSPO principles as well as the requirements of other members, especially new members. This was also confirmed by the results of field interviews in farmer group such as Batas, Tambusai Barat and Sungai Kumango Village, where the smallholders/member admitted that they had signed all the requirements.

Status: Comply

1.2

Smallholders have the capacity to effectively manage their farm.

Eligibility, MS A and MS B

The members/smallholders have attended the trainings provided by the organization. One of the trainings carried out was related to recording production and also selling FFB. for example, smallholders show auditors the recorded production records for each farmer group which is reported monthly to the Group Manager. The recording contains information such as monthly FFB production, pesticide use, and fertilizer use. The records submit from members to cooperation every month.

Some training recordings have also been shown, for example:

- Training on FFB Pricing Mechanism in West Tambusai Village on October 15, 2022.
- Socialization on the use of pesticides at the Tambusai Sejahtera Self-help Office on August 27, 2022.

The training record contains information on the attendance list of members, documentation and also training materials in the form of presentations.

Based on the results of interviews with smallholder member in the field (Batas, Tambusai Barat and Sungai Kumango Village), members have recordings of FFB sales which they routinely inform to group farmer every month.

Status: Comply

1.3

Smallholders implement good agricultural practices (GAP) on their farms.

1.3

Eligibility

Based on the results of document verification, interviews with ICS management and sample farmers, it was found that all members

had signed and understood the membership requirements. Prior to joining PPSSTS, all members must complete the requirements as prospective members, including filling out a member registration form and providing copies of ID cards, family cards and land ownership documents. Apart from that, members also need to sign several documents, one of which is the Planters Statement. For example, a farmer with the initials FSZ from Batas Village signed the commitment on May 2nd, 2022.

Based on interviews with sample farmers and field observations on their land, they understand the requirements for membership and the consequences of RSPO certification, one of which is the application of GAP in the management of sustainable oil palm plantations.

MS-A

PPSSTS has provided training to all group members regarding Good Agricultural Practices (GAP) as outlined in several types of documents as follows:

- GAP training related to TBM maintenance, TM maintenance, germination and harvest which was held on August 27th, 2022, and was attended by 32 participants.
- GAP training related to fertilizing and spraying which was held on July 2nd, 2022, and was attended by 37 participants.
- Integrated Pest Management (IPM) Training, which was held on July 2nd, 2022, and was attended by 37 participants.
- Training on filling in farmer's notebooks (production, pruning and harvest reports) which was held on September 23rd, 2022, and was attended by 25 participants.

Based on the results of interviews with sample farmers, information was obtained that all respondents could demonstrate all their knowledge related to the training results and had been applied in their respective fields. The results of the field visits also show that the sample farmers have implemented good GAP practices in a sustainable manner.

MS-B

PPSSTS shows examples of GAP application documents by farmers related to recording FFB production, use of fertilizers and pesticides to carrying out maintenance activities (pruning), for example:

- **Harvesting.**
Each farmer has a record of harvesting which is listed in the 2022-2023 PPSSTS Farmer's Record Book. This document provides information related to harvest dates, yields that are harvested every 2 weeks (14-day rotation), FFB prices, income, and expenses for harvesting activities. As an example, a farmer with the initials MBS from Batas Village produced 6,638 kg of FFB in May 2022.
- **Fertilization.**
The PPSSTS Farmer's Record Book explains the fertilization activities carried out by farmers throughout 2022. This document provides information about the timing of fertilization and the amount of fertilizer and trees applied by each farmer. As an example, a farmer with the initials PP from Tambusai Barat Village used 550 kg of dolomite fertilizer with a total of 275 palm trees on June 28th, 2022.
- **Spraying.**
The use and application of pesticides is recorded in the 2022 PPSSTS Farmer Record Book. This document provides information on the application date, type of pesticide, number of caps/ha and doses of pesticides used by farmers. As an example, a farmer with the initials STS from Sungai Kumango Village used a systemic pesticide (Kon Up brand) in the amount of 76 caps/ha at a dose of 120/cap on December 12th, 2022.
- **Plant maintenance.**
Farmers carry out plant maintenance activities on the land they manage, namely pruning oil palm fronds. The PPSSTS Farmer's Record Book for 2022 provides information regarding the date and number of pruned oil palms. As an example, a farmer with the initials STN from Batas Village carried out pruning activities of 162 palm trees on September 8th, 2022.

Activities carried out by farmers are monitored by ICS management. The monitoring results will then be submitted to the ICS Manager in a monthly meeting to be monitored and developed. For example, at the beginning of each month, each farmer's notebook will be submitted to the ICS management at the office for a complete recapitulation.

Based on the results of interviews and field visits to the sample farmers, it is known that the farmers have implemented the GAP which refers to the P&C of sustainable palm oil listed in the RISS in cultivating oil palm on their land. For example, applying fertilization according to the recommendations given, not spraying on river banks, land clearing without burning, frond stacking techniques to maintain soil moisture and so on. The sample farmers were also able to explain well each stage of GAP management in oil palm plantations. This has been well understood by all members because they have received regular training and outreach sessions throughout 2022.

Status: Comply

PRINCIPLE 2: ENSURE LEGALITY, RESPECT FOR LAND RIGHTS AND COMMUNITY WELLBEING

2.1 Smallholders have legal or customary rights to use the land in accordance with national and local laws and customary practices.

Eligibility

The organization has managed legality data owned by each member, including the legality of land owned by members (especially new member) for example:

No	Members Name	Village	Land Certificate
1	Bajongga Manulang	Batas	SHM
2	Meriati Br. Silaban	Batas	SHM
3	Sutrisno	Batas	SKGR
4	Rizal Pasaribu	S. Kumango	SKT
5	Rusti Br Manalu	S. Kumango	SKD

Based on the results of the verification of the land ownership documents above, all land certificates are in accordance with the names of smallholder members registered in the member information data. Smallholders provided the coordinates or maps of their plots

In addition to information related to the legality of land ownership, smallholders also have clear boundaries in their respective areas. Auditor made field visits to several smallholder groups, for example members on Batas, Tambusai Barat and Sungai Kumango Village, based on field observation, it is clear that the boundaries of the member's land area are in form of pole.

MS A
Regarding the previous OFI, where companies were encouraged to improve land status and permits, management and farmers have shown progress in obtaining STDBs issued by the government on April 4, 2022, including on behalf of farmers:

- Sontiar Br. Simanjutak (No. 14.06.04.2004-0697)
- Tiopan Siallagan (No. 14.06.04.2004-0696)
- Jampi Simarmata (No. 14.06.04.2004-0691)

Based on the results of interviews with the Plantation Agency and group managers, information was obtained that there are several STDBs that are still being processed by the agency. Regarding the SPPL, the Group Manager is currently still in the process of making an SPPL via OSS according to government directives. The Group Manager plans to complete the SPPL and STDB within the next 2 year.

MS B
Each plot has proof of land ownership in accordance with the land ownership documents. Based on the results of field visits, it is known that the smallholders have been operating on their respective lands which are marked by the presence of red stakes. In addition, all boundaries are clearly visible in the field.

Status: Comply

2.2 Smallholders have not acquired lands from indigenous peoples, local communities or other users without their free, prior and informed consent (FPIC), based on a simplified FPIC approach.

Eligibility, MS A, MS B

Based on interviews and observations with farmers in Batas Village, Tambusai Barat Village and Sungai Kumango Village, it is known that the land they own is inherited from their families. PPSSTS farmer members are generally the local community and there is no coercion in the process of obtaining their land either for the customary community or other user communities.

The stages in transferring legal rights in the form of buying and selling, inheritance or delegation of land rights in other forms are regulated in SOP for Compensation for Transfer of Legality Rights and Conflict Resolution No. 008/SOP/ICS/PPSSTS/III/2021 which was approved by the ICS Group Manager in March 2021, including:

- The legality and status of land ownership must be clear and non-conflict. Have a recognized legality (sale and purchase certificate, certificate of land, or certificate of ownership)
- For members who are going to transfer legal rights to land ownership, it must be accompanied by evidence that is known to the Village Head and witnesses of the sale and purchase. Then report to the head of the farmer group. Furthermore, the head of the farmer group reports to the management of the Tambusai Sejahtera Independent Oil Palm Farmers Association.
- The transfer of legal rights also includes the transfer of the rights and obligations of the previous owner.

- The head of the farmer group reports to the management of the Tambusai Sejahtera Independent Palm Oil Farmers Association about the transfer of rights that occurred, then the farmer group head collects photocopies of the relevant documents as well as the identity of the new owner of the land.
- The transfer of legal rights is carried out without coercion from any party.

Based on the document review, it is known that the farmer's land ownership status consists of 3 types of land ownership certificates, namely SKGR, SKT and SHM. This is in accordance with the statement from the Secretary of the Border Village that there is no oil palm land owned by the community whose ownership is carried out by force.

Below are some data on the oil palm plantation area of PPSSTS farmers:

NO	FARMERS	ID PLOTS	VILLAGE	LEGALLITY	NO STDB
1	Amir Siburian	C.010	Tambusai Barat	SKT	14.06.04.2002-0649
2	Panti Br Sianturi	C.015	Tambusai Barat	SKGR	14.06.04.2002-0656
3	Koter Siregar	C.019	Tambusai Barat	SHM	14.06.04.2002-0659
4	Rosida Br Sagala	D.001	Sungai Kumango	SKGR	14.06.04.2007-0679
5	Rizal Pasaribu A	D.006	Sungai Kumango	SKT	14.06.04.2007-0677

In addition, based on information from the Rokan Hulu District Plantation Agency, it is known that there have never been any problems with the issuance of *STDB* because PPSSTS farmers' land has clear boundaries and ownership.

Status: Comply

2.3

The right to use the land is not disputed by indigenous peoples, local communities or other users.

Eligibility

PPSSTS has a conflict resolution mechanism that is regulated in the SOP of Compensation for Transfer of Legality Rights and Conflict Resolution, No. 008/SOP/ICS/PPSSTS/III/2021 which was approved by the ICS Group Manager, in March 2021, namely:

- Farmers report problems to the management of the PPSSTS regarding land conflicts that occur
- The management, together with the farmers in conflict, go to the local *RT* administrators to mediate
- Mediation is carried out on the principle of kinship
- If mediation steps at the *RT* level do not get a solution, then mediation at the Village level will be carried out.

In addition, all farmers who are members of PPSSTS made a commitment statement signed by each farmer, including a commitment to provide information to the ICS Manager regarding information on land ownership and land use, the locations (coordinates) of all plots currently planted with oil palm, information on all forms of land disputes that currently exist and commit to resolving all disputes that still exist today.

Based on the results of field observations, in the Farmer Groups of Batas Village, Tambusai Barat Village and Sungai Kumango Village and interviews with the ICS Manager, the Food Security Service, Agriculture and Fisheries, Farmer Members and the Head of Batas Village, it is known that there are no land disputes for farmers who are members of PPSSTS.

MS A, MS B

Based on the results of field observations, for example in the Farmer Groups of Batas Village, Tambusai Barat Village and Sungai Kumango Village, it is known that all boundaries are clearly visible in the field.

The boundaries of the field are divided into several categories, namely if the field is bordered by oil palm, then it is in the form of a marker pole bearing the name of the farmer group, but if it is not bordered by oil palm, then it uses natural boundaries or according to the types of plants that are around it.

Based on interviews with the Department of Food Security, Agriculture and Fisheries, the ICS Manager, and the farmer groups who were sampled, namely the Farmer Groups of Batas Village, Tambusai Barat Village and Sungai Kumango Village, information was obtained that there were no land disputes with indigenous peoples or local communities. In addition, the ownership of farmers' land is generally inherited by the family with the legality of *SKGR*, *SKT* and *SHM*.

Status: Comply

2.4

Smallholder plots are located outside of areas classified as national parks or protected areas, as defined by national, regional or local law or as specified in National Interpretations.

Eligibility, MS A, MS B

PPSSTS has overlaid the land of association member farmers with area functions in the form of Land Use Areas (APL), Production Forests (HP), Conversion Production Forests (HPK) and Water Bodies and the Indicative Map of Postponement of New Permits (PIPIB) period 2 of 2022, Number SK.7594/MENLHK-PKTL/IPSDH/PLA dated 1/9/2022 such as Primary Forest in Production Forest and Other Use Areas, Conversion Forest, Protected Forest, and Peatlands. The source of the map as a reference is:

- Results of Mapping Survey and Data Collection of PPSSTS Independent Oil Palm Plantations
- Topographic Map of Indonesia (RBI) BIG 1:25,000
- Forest Area Map KLHK SK 878/Menhut-II/2014
- Indicative Map of Postponement of New Permits (PIPIB) for Primary Natural Forest and Peatland period 2 of 2022 Number SK.7594/MENLHK-PKTL/IPSDH/PLA.on 1/9/2022.

Status: Comply

2.5

For new plantings, smallholders do not clear or acquire any land without obtaining the free, prior and informed consent (FPIC), of indigenous people and/ or local communities and/ or other users, based on a simplified FPIC approach.

Do any smallholders within the group have plans for new plantings of oil palm? If none, SKIP

Eligibility

Based on document reviews and interviews with farmers and PPSSTS administrators, as well as field observations, it is known that there are no plans for new plantings to be carried out by farmers. In the PPSSTS work plan for the period 2021 – 2025 there is also no new planting plan. In addition, all farmers who are members of PPSTS have signed a commitment that they will not clear land or acquire land from indigenous peoples, local communities, or other users without their FPIC based on a simplified FPIC approach.

MS A

Based on document review, interviews with farmers and PPSSTS administrators, as well as field observations it is known that there are no new planting plans carried out by farmers.

MS B

Based on document review, interviews with farmers and PPSSTS administrators, as well as field observations it is known that there are no new planting plans carried out by farmers.

Status: Comply

PRINCIPLE #3 RESPECT HUMAN RIGHTS, INCLUDING WORKERS' RIGHTS AND CONDITIONS

3.1

There is no use of forced labour.

Eligibility

All members have signed a statement of commitment regarding the prohibition of forced labor. For example, a farmer with the initials MSFM from Border Village signed a Planter's Statement on May 2nd, 2022. At point D3 the document reads "I am committed to ensuring that there are no forced labor practices in plantation operations and to stop existing forced labor practices."

Apart from that, PPSSTS also has Labor SOP Number 010/SOP/ICS/PPSSTS/VI/2021 which came into effect in June 2021 and was signed by the ICS Manager. The procedure explains that PPSSTS members do not allow coercion to work.

MS-A

The farmers took part in the employment training, which was held on October 15th, 2022, and was attended by 22 participants. The training discussed labor aspects referring to the RSPO P&C for independent smallholders and labor law in force in Indonesia, for example regarding the prohibition of forced labour, the prohibition of employing children under the age of 18, setting minimum wages and decent payments for workers, providing safe work facilities for workers as well as a mechanism for submitting complaints.

All farmers and workers have attended training activities related to employment. What is written in the report is only a sampling of training activities attended by several representatives of farmer groups. Then, based on the results of interviews with farmers and workers, it is also known that they have understood the implementation of labor rights and obligations in accordance with applicable procedures.

MS-B	<p>Based on the results of interviews and field visits to sample farmers from 3 villages (Batas Village, Tambusai Barat Village and Sungai Kumango Village), it is known that there are some members who use labor for harvesting and plant maintenance activities. The source also stated that there was no holding of documents by farmers or ICS management and each worker could easily refuse to work/terminate the employment relationship with the member concerned if necessary, so that there was no compulsion at work.</p>
	<p>Status: Comply</p>
<p>3.2 Children are not employed or exploited. Work by children is acceptable on family farms, under adult supervision and when not interfering with education programs. Children are not exposed to hazardous working conditions.</p>	
<p>Eligibility Farmers have understood that there should be no child labor practices in the estate, this is evidenced by the results of interviews and field observations in the Farmer Groups of Batas Village, Tambusai Barat Village and Sungai Kumango Village, it is known that the land owner as a worker is an adult over 18 years old and no children are employed in the estate. In addition, all members of the Farmers Group in PPSSTS have signed a commitment that there is no child labor practice in plantation operations and stop child labor practices that are still ongoing. As for school-age children, they are still carrying out their school education according to their level.</p>	
<p>MS A, MS B Based on observations and interviews with PPSSTS group managers and members of Farmer Groups in Batas Village, Tambusai Barat Village and Sungai Kumango Village, no children under 18 years of age were employed in the plantations. The land owner does not employ other people in carrying out plantation maintenance and harvesting. Based on data from the youngest farmer in Kelompok Tani Usaha Bersama, namely Eni Dameria Hutasoit in Batas Village, who is 22 years old or born on November 5th, 2000. If at that time the activity cannot be carried out alone, the planters will use other workers with an above 18 years old.</p>	
	<p>Status: Comply</p>
<p>3.3 Workers' pays complies with minimum legal requirements, mandatory industry standards as defined by national law or collective bargaining, whichever takes priority in local regulations.</p>	
<p>Are there workers on the farm? If no, SKIP</p>	
<p>Eligibility PPSSTS shows a Planter's Declaration signed by all members, for example a farmer with the initial AT from Tambusai Barat Village who signed the letter on May 2nd, 2022. Point D4 explains the commitment of members regarding payment of wages to workers in accordance with the regional minimum wage.</p>	
<p>Apart from that, the alliance also has Labor SOP Number 010/SOP/ICS/PPSSTS/VI/2021 which came into force in June 2021 and was signed by the ICS Manager. The procedure explains that PPSSTS members pay wages to workers at least according to the Regional Minimum Wage for Rokan Hulu Regency.</p>	
<p>MS-A, MS B In determining wages, farmers are guided by wages based on agreed production units. Wages payment agreements and other provisions are discussed orally between farmers and workers which contain the following matters:</p>	
<ul style="list-style-type: none"> • Duties and responsibilities • Wages from work • Use of PPE in the workplace and work equipment facilities 	
<p>The results of the document review found that the determination of wages for workers refers to the applicable minimum wage in Rokan Hulu Regency. Based on the Decree of the Governor of Riau Number Kpts.1272/XI/2021, it is known that the minimum wage for Rokan Hulu district in 2022 is IDR 2,986,863.49/month or IDR 119,474.54/day. Then, based on the Decree of the Governor of Riau Number Kpts1783/XII/2022 it is known that the minimum wage for Rokan Hulu district in 2023 is IDR 3,248,333.52/month or IDR 129,933.34/day.</p>	
<p>PPSSTS shows the work contract agreement letter between the employer (farmers who use labor) and workers on March 15, 2023. The document explains the wages earned for workers based on the type of work, namely as follows:</p> <ul style="list-style-type: none"> • Harvesting work of at least IDR 125,000/ton 	

- Pruning work of IDR 2,500/tree of palm
- Fertilizer work of at least IDR 10,000/sack of fertilizer
- Spray work IDR 8,000/knapsack

Based on the results of interviews with sample farmers from Batas Village, Tambusai Barat Village and Sungai Kumango Village, information was obtained that wage payments were different for each type of work, as follows:

- Harvesting work: Wages are paid per Kg of FFB, which ranges from IDR 130 – 200/kg. In one month, the yields obtained by farmers generally range from at least 1 ton. So that the wages earned by workers are IDR 130,000 - 200,000/ton.
- Spray work: Wages are paid per head of sprayer, which is IDR 10,000/knapsack. In one day of spraying activities with a land area of 1 ha, farmers generally spend 20 times refilling pesticides on the knapsack. So that the wages earned by workers are IDR 200,000/spraying activity.
- Fertilizer work: Wages are paid per sack of fertilizer, which ranges from IDR 10,000 - 15,000/sack. In one fertilization activity, farmers use a maximum of 15 sacks of fertilizer. So that the wages earned by workers are IDR 150,000 – 225,000/fertilizing activity.
- Pruning work: Wages are paid per tree pruned, which is IDR 2,500/palm. In general, farmers have at least 100 oil palm trees in an area of ± 1 Ha. So that the wages earned by workers are IDR 250,000/pruning activity.

Then, PPSSTS and farmers show proof of payment of wages to workers listed in payment receipts, for example for harvesting work which refers to the acquisition of FFB based on weighing results at the factory, which are as follows:

- Receipt of payment of workers' wages from farmers with the initials MBM on January 4th, 2023, amounting to IDR 175,000
- Receipt of payment of workers' wages from farmers with the initials PP on February 17th, 2023, amounting to IDR 245,000
- Receipt of payment of workers' wages from farmers with the initials UH on March 2nd, 2023, amounting to IDR 217,000

From the explanation above, it can be concluded that workers have received payments as expected and agreed, at least in accordance with the applicable minimum wage.

	Status: Comply
--	-----------------------

3.4

Workers understand their rights and freedom to file a complaint to group manager or relevant third parties, including RSPO.

Are there workers on the farm? If no, SKIP

Eligibility

PPSSTS shows the Planters Declaration document that has been signed by all members. For example, a farmer with the initials STS from Sungai Kumango Village signed a letter on January 3rd, 2020. In point D5 it stated that "I am committed to respecting workers' rights to submit complaints".

PPSSTS also shows procedures related to the complaint submission mechanism number 024/SOP/ICS/PPSSTS/VI/2021 which has been in effect since May 2021 and has been approved by the ICS Manager. The procedure describes the process for internal and external complaints from workers, members and third parties up to the stage of completion.

MS-A

The farmers took part in the employment training, which was held on October 15th, 2022, and was attended by 22 participants. The training discussed labor aspects referring to the RSPO P&C for independent smallholders and labor law in force in Indonesia, for example regarding the prohibition of forced labour, the prohibition of employing children under the age of 18, setting minimum wages and decent payments for workers, providing safe work facilities for workers as well as a mechanism for submitting complaints.

All farmers and workers have attended training activities related to employment. What is written in the report is only a sampling of training activities attended by several representatives of farmer groups. Then, based on the results of interviews with farmers and workers, it is also known that they have understood the implementation of labor rights and obligations in accordance with applicable procedures. This is in line with the results of interviews with sample farmers from Batas Village, Tambusai Barat Village and Sungai Kumango Village, which stated that farmers already know the flow of complaints that can be submitted orally or in writing to the ICS administrators who are appointed as communicators between workers or farmers and ICS management. Over the past year, there has been no information on complaints submitted by members to PPSSTS.

MS-B

Based on the results of interviews and field visits to sample farmers from 3 villages (Batas Village, Tambusai Barat Village and Sungai Kumango Village), it is known that there are several members who use labor for harvesting and plant maintenance activities. They are stated that workers and farmers were routinely socialized by the ICS management regarding the flow of complaints during training activities or briefings before starting work.

Based on the results of interviews and field visits to sample farmers from 3 villages (Batas Village, Tambusai Barat Village and Sungai Kumango Village), it is known that some members use labor for harvesting and plant maintenance activities. Farmers also stated that socialization regarding the flow of complaints was routinely carried out to workers before starting work. Based on the results of interviews with workers, it is known that they have understood the flow of complaints. Sources stated that complaints could be submitted orally and in writing through farmers/land owners or through ICS administrators. This is in line with the results of the review of the applicable procedural document.

Status: Comply

3.5

Working conditions and facilities are safe and meet minimum legal requirements.

Eligibility

All members have signed a commitment regarding the provision of safe working conditions and facilities as stated in the Grower's Declaration Letter. At point D6 the commitment reads "I am committed to providing safe working conditions and facilities". PPSSTS shows an example of signing a commitment by a member. For example, a farmer with the initials JFS signed the letter on January 3rd, 2020.

PPSSTS also shows the SOP for identifying OHS aspects number 007/SOP/ICS/PPSSTS/VIII/2020 which has been in force since August 2020 and has been approved by the ICS Manager. The procedure describes the use of PPE for each worker based on the type of work in the field as a preventive measure to minimize the consequences of work accidents.

MS-A

The farmers took part in the employment training, which was held on October 15th, 2022, and was attended by 22 participants. The training discussed labor aspects referring to the RSPO P&C for independent smallholders and labor law in force in Indonesia, for example regarding the prohibition of forced labour, the prohibition of employing children under the age of 18, setting minimum wages and decent payments for workers, providing safe work facilities for workers as well as a mechanism for submitting complaints.

All farmers and workers have attended training activities related to employment. What is written in the report is only a sampling of training activities attended by several representatives of farmer groups. Then, based on the results of interviews with farmers and workers, it is also known that they have understood the implementation of labor rights and obligations in accordance with applicable procedures. This is in line with the results of interviews with farmers, information was obtained that they understood safe working conditions and facilities for workers and farmers themselves. For example, for spraying activities, farmers explained that the PPE they used included safety helmets, boots, masks, aprons, gloves and used long sleeves and trousers to avoid exposure to chemicals.

Then, PPSSTS also shows a document monitoring the health of farmers and workers listed as a Certificate of Healthy Body issued by a general practitioner (dr. Muhammad Fakhrizal) with a Practice Permit number 503/DPMPSTSP/SIPD/XI/201811 which explains the results of a medical examination of 31 spray workers on November 5th, 2022. The letter stated that all farmers and spray workers who had received a health check were declared in good health and had no indication of exposure to chemicals.

MS-B

The results of interviews with sample farmers from 3 villages (Batas Village, Tambusai Barat Village and Sungai Kumango Village), obtained information that there were several members who used labor for harvesting and plant maintenance activities. The informants also added information that they had demonstrated and facilitated safe working conditions and facilities for workers such as the use of PPE in harvesting, spraying, fertilizing, etc. In addition, over the past year there have been no work accidents during plantation operations.

Then, based on field visits to farmers' fields, for example in Sungai Kumango Village, it was discovered that there was one worker doing pruning work, but the worker did not use the complete PPE as required in the SOP. From the results of interviews with these workers, information was obtained that workers had complete PPE but were not brought on that day.

PPSSTS and farmers have the opportunity to ensure that all work is carried out in safe working conditions and adequate facilities, such as but not limited to the use of PPE, first aid supplies, and others. **OFl.**

Status: Comply
3.6
There is no discrimination, harassment, or abuse on the farm
Are there workers on the farm? If no, SKIP
Eligibility

Based on the results of interviews with PPSSTS administrators, *Kelompok Tani* in Batas Village, Tambusai Barat Village and Sungai Kumango Village, it is known that some land owners employ other people to care for and harvest their estates. If the land owner has an urgent need so that he cannot harvest and maintain the estate, he will be replaced by a member of his family or another person who usually does the harvesting. The land owners know and have signed the smallholders' commitment that it is prohibited to discriminate, abuse or violence in the plantations.

MS A

Farmers have attended training related to discrimination, harassment or violence in the estate, which was carried out on January 30, 2022, at the PPSSTS office by District Plantation Agency staff Rokan Hulu to PPSSTS members attended by 29 farmers. the association conducts training in stages for several other themes, such as RSPO and ISPO P & C training/socialization on 23 September 2022 in Rambah Village by SPKS staff to PPSSTS members attended by 25 smallholders.

MS B

Based on interviews with workers in the Batas Village Farmers Group, Tambusai Barat Village Farmers Group and Sungai Kumango Village Farmers Group, it is known that they work in a safe place and are free from discrimination, harassment or violence. All wages received are in accordance with workload and work results. Wages are in accordance with work agreements and there are no deductions from wages.

Status: Comply
PRINCIPLE #4 PROTECT, CONSERVE AND ENHANCE ECOSYSTEMS AND THE ENVIRONMENT
4.1
High Conservation Values (HCVs) on the smallholder plot or within the managed area and High Carbon Stock (HCS) forests identified after November 2019 using the simplified combined HCV-HCS approach are managed to ensure that they are maintained and/or enhanced.
Eligibility

Farmers have committed to protecting HCV and HCS forests through a precautionary practice approach, for example there is a statement letter from members of *Kelompok Tani* Batas Village, Tambusai Barat Village and Sungai Kumango Village on 05 February 2022, stating that they will not carry out new plantings or expansion of their plantations. existing in primary forest, HCV Area, HCS forest or over 25° steep slopes and protect HCV and HCS forest through a precautionary approach. The Alliance has determined their conservation areas with the precautionary principle of including locations outside the scope of certification as HCV areas. The total HCV area contained within the scope of the certification is 8.23 Ha in the form of a river bank which still has a few stands of trees and shrubs.

The HCV area is 8.23 Ha is in scope of 610.64 ha, found in the following 9 farmers:

No	Name	Latitude (N)	Longitude (E)	Mature Area (Ha)	Included HCV (Ha)
1	Hotmauli Pakpahan B	1° 3' 27,107" N	100° 8' 51,580" E	0.94	0.21
2	Jonson Manik	1° 3' 16,992" N	100° 8' 53,272" E	2.94	1.13
3	Nuralam Sitinjak	1° 3' 20,445" N	100° 8' 49,714" E	2.06	0.75
4	Parulian Manalu	1° 3' 59,123" N	100° 10' 15,142" E	2.33	0.75
5	Rando Junior Nalang Surya Siahaan	1° 3' 19,445" N	100° 8' 57,990" E	2.43	1.45
6	Ronal Simbolon	1° 3' 10,733" N	100° 9' 12,826" E	2.33	0.89
7	Untung Hutabarat	1° 3' 14,595" N	100° 8' 49,880" E	1.73	0.24
8	Mardoli A	1° 1' 51,720" N	100° 11' 15,547" E	8.80	1.19

9	Mardoli B	1° 1' 55,269" N	100° 11' 22,563" E	6.63	1.63
	Total			30.20	8.23

PPSSTS administrators and farmers also understand the protection of local animals and plants in HCV areas that must be preserved and protected, including Sumatran slow lorises, forest cats, long-tailed macaques, root tigers, owls, eagles, alap alap, parrots, kacer, crows, monitor lizards, Turtle, Hedgehog. Any farmer who finds the animal must report it to the alliance administrator. In addition, farmers are aware of the prohibition against burning, hunting, and fishing in ways that are not environmentally friendly (poisoning and electrocution) and the prohibition of applying chemicals around water bodies with a limit of 20 meters.

Based on the results of field observations in the farmer groups of Batas Village, Tambusai Barat Village and Sungai Kumango Village, there were no traces of burning in their plantation operations.

MS A
Farmers have attended training and outreach regarding the importance of maintaining and conserving HCV and HCS forests, understanding conflicts between humans and wild animals, and understanding of important ecosystems. Examples of such training include training and socialization which was held on August 27, 2022, which was attended by 32 farmers. the association conducts training in stages for several other themes, such as RSPO and ISPO P & C training/socialization on 23 September 2022 in Rambah Village by SPKS staff to PPSSTS members attended by 25 smallholders. Based on observations and interviews with Batas Village Farmers Group, Tambusai Barat Village Farmers Group and Sungai Kumango Village Farmers Group, it is known that there has never been a conflict with wild animals and the application of fertilizers and chemicals has not been carried out in the river border area, about 20 meters away.

MS B
The Alliance has renewed identification related to RTE species, HCV, HCS forest as evidenced from the document Results of the HCV Assessment Report in New Member Areas of PPSSTS Certification for Independent Smallholders conducted by the FORTASBI Indonesia Foundation in February 2023 which was carried out in 3 member villages, namely the Batas Village, Tambusai Barat Village and Sungai Kumango Village, Tambusai District, Rokan Hulu Regency – Riau Province. The study covered 103 farmers. This activity is carried out because independent smallholders must meet the principles and criteria of the RSPO to obtain certification. The Alliance also has SOP Number 015/SOP/ICS/PPSSTS/VIII/2020 concerning Protection of HCV-SKT Areas.

Based on the results of the identification of High Conservation Value Areas (HCV) in the plantation areas of PPSSTS members, they are categorized into 3 High Conservation Values (HCV).

HCV is something that has high conservation value at the local, regional, or global level which includes ecological, environmental services, social and cultural values. HCV 1 related to the conservation of Biodiversity. HCV.4, namely Areas that Provide Natural Environmental Services, HCV.5. Areas that Have Important Functions for Basic Fulfillment of Local Communities. Based on identification results from farmers, for steep areas, swamps, peat, and graves were not found around the location of farmers' land.

According to PermenLH No. 106 of 2018, regarding Protected Plant and Animal Species, there are no protected fauna and flora identified in the plantation location of farmer members. The threats to fauna species are hunting, killing and buying and selling of animals by the local community or from outside. Conservation actions that can be taken if a species that includes protected flora or fauna is found, namely:

- Do not keep, kill, hunt and trade protected animals
- Make signs calling for prohibitions against hunting/killing/trading of protected animals.
- Take photos or documentation as evidence and report it to *BKSDH* if there are indications that it triggers human-wildlife conflict.
- Provide markings and boundaries on protected rare plants.

The results of interviews with all sample farmers obtained the conclusion that all farmers were aware of the RTE, HCV, HCS forest species in their area. They are also able to explain the precautionary practices applied in their area, including:

- Protect all animals found in their land area.
- Do not hunt all the flora and fauna in their environment.
- Not burning and destroying forests
- Ensuring that the flora and fauna habitat in their environment is not damaged.
- Installing warning boards/signboards related to the above

Status: Comply

4.2

Where the existing smallholder plot has been planted and cleared after November 2005 or is on an area identified as HCS forests after November 2019 up to the eligibility period, a remediation and compensation process appropriate for smallholders based on Land Use Change Analysis (LUCA) will be applicable (Reference preamble).

Eligibility

PPSSTS can show information on all smallholder plots converted and planted with oil palm after 2005, as well as all plot coordinates/maps. A simplified combined HCV-HCS approach has also been used which can be proven in the smallholder's statement document containing:

- Members provide all land ownership information
- Locations (coordinates) of all plots currently planted with oil palm
- Information on all plots converted and planted with oil palm after 2005
- Estate plots located on steep slopes
- Estate plots located on peat land
- Detailed information on plans for replanting and expansion of oil palm areas
- There are no land and land use disputes
- Source of obtaining labor for the estate.

MS A

PPSSTS has sent the PPSSTS Disclosure Data to the RSPO. The process for reporting Disclosure data is as follows:

- Email from Fadli Dermawan (fadli.spks@gmail.com) on 27 July 2021 to RSPO Compensation (rspocompensation@rspo.org) stating that PPSSTS wants to add members before carrying out a certification audit by attaching Disclosure data from member farmers.
- There was an email reply from Kasih Putri (kasihputri@rspo.org) on 19 August 2021 to Fadli Dermawan (fadli.spks@gmail.com) stating that all plantation plots were recorded to have planted oil palm before November 2005, so there are no conservation obligations (liability).
- There was an email from Novet Charles (novetcharlesakollo@gmail.com) on October 18, 2021 to Kasih Putri (kasihputri@rspo.org) which stated that there were several changes to the data of member farmers by attaching Disclosure data of 102 farmers with an area of 345, 94 Ha.
- There was an email reply from Kasih Putri (kasihputri@rspo.org) on October 18, 2021 to Novet Charles (novetcharlesakollo@gmail.com) stating that there were 102 farmers with a total area of land managed 345.94 Ha, of which all planters had disclosed by planting oil palm before November 2005, so it is declared with No Liability.

In 2023 PPSSTS there will be an additional 103 farmers with an additional 138 plots of land. PPSSTS Sends PPSSTS Disclosure Data to RSPO again. The process for reporting Disclosure data is as follows:

- There was an email from Novet Charles (novetcharlesakollo@gmail.com) on 17 January 2023 to RSPO Compensation (rspocompensation@rspo.org) which conveyed a disclosure and shp of farmers who are members of the PPSSTS that there were an additional 103 farmers people with an additional 138 plots of land.
- There was a reply email from Restia (rspocompensation@rspo.org) on 17 January 2023 to Novet Charles (novetcharlesakollo@gmail.com) stating that the RSPO secretariat will examine the document and will provide an update within 14 working days (tentative). In addition, the RSPO Secretariat requests that once the HCV/HCV assessment has been completed, fill in the final report date on the disclosure form and send the final HCV/HCT assessment report for verification and documentation purposes.
- There was an email from Restia (rspocompensation@rspo.org) on 30 January 2023 to Novet Charles (novetcharlesakollo@gmail.com) stating that based on the Disclosure form sent there were 110 smallholders with an area of land under management of 264.7 Ha (138 plots) which was disclosed by no new land clearing since November 2005 (No Liability) so that the LUCA process is not needed for PPSSTS so that PPSSTS has 205 smallholders with a total land area of 612.09 Ha.
- There was a reply email from Novet Charles (novetcharlesakollo@gmail.com) on 10 February 2023 to RSPO Compensation (rspocompensation@rspo.org) submitting the results of the HCV/HCT assessment of PPSSTS Rokan Hulu District, Riau Province. In addition, PPSSTS attached the latest disclosure because in the previous disclosure there was an error in writing the land area so that the land area became 610.64 Ha with 205 planters.

Based on the information above, the document disclosed to the RSPO has not cleared any new land since November 2005 (No

Liability) and the LUCA process is not required for PPSSTS

MS B

Based on the email from the RSPO, it is known that all the member smallholders' plantation areas were planted with oil palm before November 2005, so it is stated as No Liability.

Status: Comply

4.3
New plantings of independent smallholders, since November 2019:

- Do not replace any HCVs
- Do not replace any HCS forests as defined by the simplified combined HCV-HCS approach
- Are not on steep slopes (more than 25 degrees or as in NI)
- Are not on peat areas of any depth.

Do any smallholders within the group have plans for new plantings of oil palm? If none, SKIP
Eligibility

Based on the 2023 PPSSTS work plan there are no plans to plant new oil palm outside the certification area. This is also in accordance with the results of interviews with group managers and members of the Alliance. PPSSTS members with a plant age of more than 20 years also have no plans for replanting and will be reviewed every year. Regarding replanting in conservation areas, all members have signed a declaration not to carry out new plantings in HCV or HCS forests, on steep slopes or on peat and all Alliance members do not own areas with these qualifications.

MS A

Based on the 2023 PPSSTS work plan there are no plans to plant new oil palm outside the certification area. This is also in accordance with the results of interviews with group managers and members of the Alliance. PPSSTS members with a plant age of more than 20 years also have no plans for replanting and will be reviewed every year. Regarding replanting in conservation areas, all members have signed a declaration not to carry out new plantings in HCV or HCS forests, on steep slopes or on peat and all Alliance members do not own areas with these qualifications.

MS B

Based on the 2023 PPSSTS work plan there are no plans to plant new oil palm outside the certification area. This is also in accordance with the results of interviews with group managers and members of the Alliance. PPSSTS members with a plant age of more than 20 years also have no plans for replanting and will be reviewed every year. Regarding replanting in conservation areas, all members have signed a declaration not to carry out new plantings in HCV or HCS forests, on steep slopes or on peat and all Alliance members do not own areas with these qualifications.

Status: Comply

4.4
Where smallholder plots exist on peat, subsidence and degradation of peat soils is minimised by use of best management practices.
Do any smallholders within the group have existing plots on peat? If no, SKIP
Eligibility, MS A, MS B

Based on the results of interviews with ICS management and sample members, it is known that there have been no changes from the previous audit. The old member's land and the new member's land are mineral fields. Based on the RTRW map of Rokan Hulu Regency, it is known that there are no peat areas on the land of farmers who are members of PPSSTS.

Based on the overlay results of the Map of Distribution of PPSSTS Farmer Estates against the Indicative Map of Postponement of New Permits (PIPIB) in 2021 scale 1:200,000 and the soil type map scale 1:100,000 in the area of the PPSSTS planters, information was obtained that there were no peat soil types in the plots of land that were managed by farmers who are members of PPSSTS.

Based on the results of field visits and interviews with farmers from the 3 sampled villages, information was obtained that there were no PPSSTS member estates located on peatlands, all member estates were on mineral soils.

Status: Comply

4.5

Plots on peat are replanted only on areas with low risk of flooding or saline intrusion as demonstrated by a risk assessment.

Do any smallholders within the group have plans for replanting plots that are located on peat? If no, SKIP

Eligibility, MS A, MS B

Based on the results of interviews with ICS management and sample members, it is known that there have been no changes from the previous audit. The old member's land and the new member's land are mineral fields. Based on the RTRW map of Rokan Hulu Regency, it is known that there are no peat areas on the land of farmers who are members of PPSSTS.

Based on the overlay results of the Map of Distribution of PPSSTS Farmer Estates against the Indicative Map of Postponement of New Permits (PIPPIB) in 2021 scale 1:200,000 and the soil type map scale 1:100,000 in the area of the PPSSTS planters, information was obtained that there were no peat soil types in the plots of land that were managed by farmers who are members of PPSSTS.

Based on field observation and interviews with farmers from the 3 sampled villages, information was obtained that there were no PPSSTS member estates located on peatlands, all member estates were on mineral soils.

Status: Comply

4.6

Fire is not used on the oil palm plot for preparing land or for pest control, nor open fire for waste management on the farm.

Eligibility

One of the mandatory requirements for new members to join PPSSTS includes making a commitment or statement signed by each new smallholder that they will take part in group certification according to the RSPO independent smallholder standard and comply with related principles, criteria, and indicators. In addition, there is a statement signed by each new farmer member that does not use fire to prepare land or control pests. In the procedure for controlling pests and plant diseases in SOP No. 019/SOP/ICS/PPSSTS/VI/2021 which was approved by the PPSSTS ICS Group Manager in June 2021 explained regarding pest and disease control, including:

- Pest and disease management is carried out independently by the estate owner.
- Pest and disease control mechanisms are prioritized using biological and mechanical approaches.
- For cases where the level of damage with the risk of loss has exceeded the economic threshold, it is possible to use a chemical approach.

Based on interviews with group managers and farmers in Batas Village Farmers Group, Tambusai Barat Village and Sungai Kumango Village, it is known that pest monitoring is carried out simultaneously with plant maintenance activities and harvesting activities, but until now there has been no identified severe attack of pests and plant diseases so that it has never been there is control. This is in accordance with the results of field visits that there was no burning in pest control in Batas Village Farmers Group, Tambusai Barat Village and Sungai Kumango Village Farmers Group.

PPSSTS also has policies related to environmental management including Leaders, Group Managers and the ICS Team who are committed to supporting independent oil palm smallholders through efforts to prevent environmental pollution, to minimize pollution, utilize waste and increase the disposal of greenhouse gas emissions.

In addition, PPSSTS has procedures related to toxic and hazardous waste management which are regulated based on SOP for toxic and hazardous waste Management No. 011/SOP/ICS/PPSSTS/II/2021 which was approved by the PPSSTS ICS Group Manager in January 2021, including:

- Leftover chemicals used, stored in a storage warehouse or a safe place and out of reach of children.
- Former chemical containers will be collected directly at the Temporary Storage for Hazardous and Toxic Waste at the TPS Office of the PPSSTS in Batas village and the PPSSTS warehouse in Tambusai Barat village.
- After being collected at the Temporary Storage for Hazardous and Toxic Waste, the officer will record the incoming waste.

MS A

All PPSSTS farmers have made statements and commitments not to use fire in preparation for making oil palm plantations, controlling pests without burning and participating in monitoring the prevention of land fires in communities and villages. This is also in accordance with internal control system decision letter No. SK/ICS/PPSSTS/I-2021 regarding the prohibition of burning land and no forest no conflict that all PPSSTS members are prohibited from clearing land by means of burning, whether intentional or not.

PPSSTS has conducted training in stages regarding best agricultural practices including training on land preparation and waste

management without burning, including socialization on restrictions on the use of fire on 15 October 2022 in Tambusai Barat Village by the SPKS Program Manager to PPSSTS members which was attended by 26 smallholders. The association has also conducted training on integrated pest management on 2 July 2022 at Farmers Estate by SPKS staff for PPSSTS members which was attended by 37 smallholders. The association has also conducted RSPO and ISPO P&C training on 23 September 2022 in Rambah Village by SPKS staff to PPSSTS members attended by 25 smallholders.

Based on interviews and observations in the Batas Village Farmers Group, Tambusai Barat Village and Sungai Kumango Village, it is known that there is no burning in preparing the land for oil palm plantations, no pest control by burning and participation in monitoring hotspots.

MS B
 All PPSSTS farmer members have made commitments or statements signed by each new farmer that they will take part in group certification according to the RSPO independent smallholder standard and comply with the principles, criteria and indicators related to not burning in their operational activities including land preparation, pest control and waste management. For example, in the control of *ulat api* and *Oryctes* with low attacks, handling is carried out by picking manually, but if moderate to severe attacks are carried out with insecticides. As for handling rat pests, it is highly recommended not to kill snakes if they are not in a condition that threatens farmers. Based on interviews with group managers and farmers in the farmer groups of Batas Village, Tambusai Barat Village and Sungai Kumango Village, it is known that pest monitoring is carried out simultaneously with plant maintenance activities and harvesting activities, but until now there has been no identified severe attack of pests and plant diseases so that it has never been there is control. This is in accordance with the results of field visits that there is no burning in pest control in the *Kelompok Tani* Batas Village, Tambusai Barat Village and Sungai Kumango Village.

In addition, based on Toxic and Hazardous Waste Management SOP No. 011/SOP/ICS/PPSSTS/II/2021 which was approved by the PPSSTS ICS Manager in January 2021 explained that the remaining chemicals used were stored in the prepared PPSSTS waste storage warehouse. Former chemical containers will be collected directly to the Temporary Storage for Hazardous and Toxic Waste by each farmer in a place that has been prepared. After being collected at the Temporary Storage for Hazardous and Toxic Waste, the Temporary Storage officer will record the incoming waste. Based on the results of observations at Temporary Storage for Hazardous and Toxic Waste PPSSTS it is known that Hazardous and Toxic Waste is stored neatly, recorded, and no waste burning has been identified.

Status: Comply

4.7 Riparian buffer zones are identified and managed to ensure they are maintained and/or enhanced.

Eligibility
 Based on the results of the latest HCV study, there are HCV areas divided into 7 farmers. All PPSSTS farmer members have made commitments or statements signed by each new farmer that they will take part in group certification in accordance with the RSPO independent smallholders standard and comply with the principles, criteria and indicators including the commitment not to carry out new plantings in river areas. In addition, it is reinforced by company procedure No. 004/SOP/ICS/PPSSTS/IV/2020 that does not carry out maintenance activities using pesticides along the river border area as wide as 20 meters to the right and left of the river. There are estate areas near river banks, including in Tambusai Barat Village Farmers Group, based on interviews and field observation it is known that farmers understand that there should be no spraying activities and that there are no traces of spraying in the estates around the river border area.

MS A
 PPSSTS has conducted various kinds of training and socialization in the form of alliance policies, SOP, RSPO principles and criteria for ISH, ICS training and training on best agricultural practices. For example, the alliance held a workshop on forest and river area management on August 27th, 2022, at the PPSSTS Office which was attended by 32 people consisting of farmers, SPKS staff and PPSSTS administrators. Among other things, this workshop aims to establish the legal basis for the management and monitoring process of HCV areas. This area must be clear to facilitate the joint management of the community, PPSSTS and the government within the HCV environment.
 the association conducts training in stages for several other themes, such as RSPO and ISPO P & C training/socialization on 23 September 2022 in Rambah Village by SPKS staff to PPSSTS members attended by 25 smallholders
 PPSTS has also conducted training on pesticides, namely training on the use of pesticides on 27 August 2022 at the PPSSTS office by Jikalauhari staff to PPSSTS members which was attended by 32 smallholders. The training explained the ban on the use of chemicals in the river border area

Based on interviews, it is known that the farmers have understood the prohibition on the use of chemicals in the river border area

In addition, there are other training and socialization, including:

- Employment training on 15 October 2022 in Tambusai Barat Village by the SPKS Program Manager for PPSSTS members which was attended by 26 smallholders
- Training/dissemination of risk identification and control on 27 August 2022 at the PPSSTS office by SPKS staff to PPSSTS members attended by 32 smallholders
- Integrated pest management training on 2 July 2022 by SPKS staff for PPSSTS members attended by 37 planters
- Group financial planning training on 23 September 2022 in Rambah Village by SPKS staff for PPSSTS members attended by 25 planters
- FPIC training/socialization on January 30th, 2022 at the PPSSTS office by Plantation Agency staff. Rokan Hulu District to PPSSTS members attended by 29 smallholders

Based on interviews with *Kelompok Tani* Batas Village, Tambusai Barat Village and Sungai Kumango Village, it is known that all farmers understand the importance of protecting the river border area and the prohibition of chemical application. In addition, farmers are aware of the management of the riparian buffer zone, including an action plan to maintain and enhance the riparian buffer zone, including planting timber in the riparian area which is directly adjacent to the farmer's estate area.

MS B

PPSSTS has SOP No. 004/SOP/ICS/PPSSTS/IV/2020 concerning Management of River Rim Areas, SOP No. 015/SOP/ICS/PPSSTS/VIII/2020 concerning Protection of HCV-SKT Areas and SOP No. 027/SOP/ICS/PPSSTS /VI/2021 Land Preparation, Replanting of Oil Palm Plantations which was approved by the PPSSTS ICS Manager in June 2021.

Based on the results of a study of the HCV, LUCA documents and maps of the distribution of members' land, it shows that there are several lands belonging to Alliance members that are located on the riverbanks. Some of the planned activities are marking area boundaries, prevention and control of land fire hazards, area protection and flora and fauna species. The results of interviews with farmers revealed that farmers already know about the management of the riparian buffer zone, including an action plan to maintain and enhance the riparian buffer zone, such as by not applying chemicals and planting forest plants in the riparian area.

Status: Comply

4.8 Pesticides are used in ways that do not endanger health of workers, family, communities or the environment.

Eligibility

PPSSTS shows the ICS Decision Letter No: 06/SK/ICS/PPSSTS/V/2021 which was ratified in May 2021 and signed by the ICS Manager. The document states that members or farmers are committed not to use WHO Class 1A or 1B pesticides (Paraquat/Green Poison).

MS-A

PPSSTS has included all members of farmer groups in training on the use of pesticides, as follows:

- GAP training related to fertilizing and spraying which was held on July 2nd, 2022, and was attended by 37 participants.
- Integrated Pest Management (IPM) Training, which was held on July 2nd, 2022, and was attended by 37 participants.

The training describes best management practices for pesticides including use of pesticides, awareness of the risks to pregnant and lactating women and young workers, storage and disposal of pesticide waste, prohibition of the use of paraquat and pesticides listed by WHO Class 1A or 1B by the Stockholm or Rotterdam Conventions.

Based on the results of interviews with sample farmers from 3 villages (Batas Village, Tambusai Barat Village and Sungai Kumango), information was obtained that farmers understand the use, storage of tools and spray PPE and the prohibition of spraying for pregnant and lactating women.

Then regarding the storage of hazardous and toxic waste, most farmers have understood how to manage them. Used pesticide packaging will be deposited into the hazardous and toxic waste warehouse at the ICS office. However, there were several farmers who stated that the used pesticide packaging would be traded to garbage collectors. In addition, farmers and PPSSTS also have not recorded comparisons between the amount of pesticide use and the amount of waste produced.

PPSSTS and farmers have the opportunity to ensure monitoring of pesticide use and managing used pesticide packaging in

accordance with applicable policies. **OFI**.

MS-B

The results of interviews with sample farmers from 3 villages (Batas Village, West Tambusai Village and Sugai Kumango Village), stated that they knew the applicable policies related to the ban on the use of the active ingredient paraquat pesticide in weed control. As an implementation of this policy, PPSSTS shows a Farmer's Record Book which explains the recording of spraying activities starting from the date of application, number of caps/ha and doses of pesticides used by farmers. For example, a farmer with the initials RWT from Batas Village used a systemic pesticide (*Round Up*) in the amount of 40 caps/ha at a dose of 120/cap on October 13th, 2022.

Then, based on the results of interviews with 1 sample farmer with the initials HII from Batas Village, it was revealed that farmers still use the contact pesticide with the active ingredient *paraquat* with the trademark *Centatop 288 SL* in weed control. The farmer stated that the use of the pesticide was carried out in January 2023 in the amount of 2 liters.

From the results of a study of the Farmer's Record Book document belonging to the farmer with the initials HII, it was explained that weed control was only carried out until 2022, namely on March 16 and September 9, 2022, using a systemic pesticide with the active ingredient *isopropylamine glyphosate* with the trademarks *Tuntas* and *Kon Up*. The use of pesticides in 2023 has not been recorded in the Farmer's Record Book, and from the results of a review of the monitoring document of the farmer's log book, it is known that checking the Farmer's Record Book is carried out every 3 months.

In addition, based on the results of a field visit to the hazardous toxic and waste storage warehouse for a farmer with the initials HII, traces of *Centatop* pesticide packaging were found.

Based on the description above, it can be concluded that PPSSTS and farmers have not been able to provide sufficient evidence that the use of the active ingredient paraquat pesticide has been avoided. This becomes **Nonconformity Number 2023.01**.

Status: Nonconformity Number 2023.01

4.9

The group and smallholders manage pests, diseases, weeds and invasive introduced species using appropriate techniques, including but not limited to Integrated Pest Management (IPM) techniques.

Eligibility

-

MS-A

PPSSTS has included all members of farmer groups in training on the use of pesticides, as follows:

- GAP training related to fertilizing and spraying which was held on 2 July 2022 and was attended by 37 participants.
- Integrated Pest Management (IPM) Training which was held on 2 July 2022 and was attended by 37 participants.

The training explained best management practices for Integrated Pest Management, use of pesticides, management of hazardous and toxic waste including handling of used pesticide packaging, control of pests, diseases, weeds and introduction of invasions.

Based on the results of interviews with sample farmers from 3 villages (Batas Village, Tambusai Barat Village and Sungai Kumango), information was obtained that farmers understand the use, storage and disposal of pesticides and the prohibition of spraying for pregnant and lactating women.

MS-B

PPSSTS has Pest and Disease Control SOP Number 019/SOP/ICS/PPSSTS/VI/2021 which has been in effect since June 2021 and has been approved by the ICS Manager.

Based on the results of interviews with sample farmers, information was obtained that farmers had understood the application of IPM in managing their land. Several farmers stated that they carried out pest control mechanically before using chemicals. Mechanical control is carried out by cutting weeds. Farmers also stated that monitoring of pests and diseases was carried out regularly, namely once every 4 or 6 months (during fertilization and spraying activities). Then, ICS officers will monitor pest and disease control carried out by members once a year. Then from the results of the field visit it was found that there were no indications of pest and disease attacks on the farmer's land and the farmer's land area was also spread over many locations (not in one plot), so the potential for pest and disease attack was low.

PPSSTS and farmers have also implemented beneficial plant planting (*Turnera subulata*) in several farmers' land/plots. For example, planting *Turnera subulata* on the land of a farmer with the initials MSD located in Batas Village. In addition, farmers have also used natural predators in pest control, such as installing an owl house on the farmer's land with the initials OOS located in Batas Village.

From the description above, it can be concluded that PPSSTS and farmers have maximized the use of the IPM approach to minimize the use of pesticides and herbicides in their estates.

Status: Comply

3.2 Conformity Checklist of Certificate and Trademark Use

1.	Evidence of permission or approval certificate and trademark from Certification Body which submitted by Client.
ASA-1	Smallholder Group does not use RSPO trademark.
	Status: Comply
2.	Implementation of certificate and trademark used by Client comply with size and type (shape) against Guideline of trademark Use
ASA-1	Smallholder Group does not use RSPO trademark.
	Status: Comply
3.	Implementation of Certificate and Trademark is not used on product.
ASA-1	Smallholder Group does not use RSPO trademark.
	Status: Comply
4.	Controlling of Certificate and Trademark, including withdrawing inappropriate trademark.
ASA-1	Smallholder Group does not use RSPO trademark.
	Status: Comply

3.3. Identification of Findings, Corrective Action, Observations, Opportunity for Improvement and Noteworthy Positive Components.

3.3.1 Identification of Findings, Corrective Actions and Observations at Initial Certification

NCR No.	: 2021.01	Issued by	: Rahmat Abdiansyah
Date Issued	: 01 December 2021	Time Limit	: 30 November 2022
NC Grade	: Major	Date of Closing	: 01 April 2022
Standard Ref. & Requirement	C.1.1 E: An annual group business plan is available, which includes: <ul style="list-style-type: none"> • Production and income forecasting based on historical records; and • Plans for expansion MS-A: The group business plan is implemented and reviewed at least annually. MS-B: The group demonstrates financial stability and growth and is able to support itself financially.		
Evidence observed (filled by auditor):			
Based on the results of the document review and interviews, the following evidences were obtained: Eligibility <ul style="list-style-type: none"> • The PPSSTS 2021 work program which was set on January 10, 2021, it is known that there are 52 activities including training, farmer mapping, RSPO socialization, etc. However, in the work program there is no annual PPSSTS business plan that includes estimates of production and income (the work program only focuses on RSPO activities). • The 2022 work program which was set on November 14, 2021, it is known that in the work program there has been a program for adding new members/expansions, but there is also no business plan for forecasting production and income as in the previous year. MS-A <ul style="list-style-type: none"> • Evaluation of the 2021 work program conducted on November 1, 2021 has not yet discussed business plans such as production and revenue estimates. MS-B: <ul style="list-style-type: none"> • Based on the results of interviews with the Group Manager and PPSSTS management, it is known that the Association's finances are currently empty and the Oil Palm Smallholders Union (SPKS) still covers the entirety of RSPO certification activities and operations. • In addition, according to the evidence of discrepancies in Eligibility and MS-A related to the 2021/2022 business plan which has not explained the plan related to financial income, PPSSTS has not been able to prove that there is a plan to support stability, growth and financial capability for the following next years. 			
Non-Conformance Description (filled by auditor):			
PPSSTS has not been able to prove that it has an annual business plan that has been evaluated as well as evidence of stability, growth and ability to support itself financially.			
Root Cause Analysis (filled by organization audited):			
The business plan has not been included because the Internal Control System (ICS) management does not understand how to			

plan.
Correction (filled by organization audited):
PPSSTS made a business plan for 2022 which has discussed production plans, income plans and others, based on the results of a 2021 review carried out with PPSSTS members and ICS management.
Corrective Action (filled by organization audited):
<ol style="list-style-type: none"> 1. Conducting socialization related to the business plan of PPSSTS for 2022 which was carried out with the National SPKS, RSPO farmer members, PPSSTS and ICS management. 2. Monitoring the implementation of the business plan every 6 months which is carried out by the national assistant by involving the ICS management.
Assessor Evaluation and Conclusion (filled by auditor):
Verification on January, 28 2022
PPSSTS has sent proofs of improvements in the form of:
<ul style="list-style-type: none"> • Root cause analysis. Based on the auditor's verification, the root cause analysis has not answered what caused this discrepancy to occur. Please be able to re-analyze the root cause that caused this discrepancy to occur. • Correction. Based on the verification Auditor correction has not answered the discrepancy. Please go directly to the action taken to correct the discrepancy that occurs. Have production and business plans and expansion plans been included in the 2022 work program? Please fix. • Corrective Action. Correction Action taken has not been answered to fix the root of the problem. Correction Action is an action taken to correct the root of the problem so that it does not recur in the next assessment. Please fix it. • Plans for expansion and addition of Members as well as production estimates carried out on December 4, 2022 and have been approved by the ICS Manager. Based on the verification of the plan document, it is only a statement for the addition of members and expansion. The auditor's question is whether the plan has been included in the PPSSTS 2022 work program? Please complete it again and attach the 2022 PPSSTS work program.
Based on the explanation above, the discrepancy in this indicator is declared Unfulfilled because it still has to be completed again in accordance with the results of the Auditor's verification.
Verification on April, 1 2022
PPSSTS has sent proofs of improvements in the form of:
<ul style="list-style-type: none"> • PPSSTS Work Plan 2022 determined by the ICS Manager. Based on the verification of the PPSSTS 2022 work plan, including registration of new members, addition of member FFB production, expansion of farmers' estates, training for members, fertilizer sales business, etc. The work plan has informed the plan for implementing the work program in 2022. To monitor the implementation of the business plan as a corrective action taken has been contained in the work plan, monitoring the implementation will be carried out in June 2022. • Minutes of the socialization of the business plan that has been made to members on December 4, 2021. • Estimated FFB production from each member which describes the estimated production of members each month. • Estimated land expansion of farmers and new members in 2022 which is targeted at 100 new members. • Root cause analysis, correction, and corrective action.
Based on the evidence of improvement that has been sent by PPSSTS, the discrepancy in this indicator is declared fulfilled .
Verified by : Rahmat Abdiansyah

NCR No.	: 2021.02	Issued by	: Rindu Galih Rezza Rachmansyah
Date Issued	: 01 December 2021	Time Limit	: 30 November 2022
NC Grade	: Major	Date of Closing	: 01 April 2022
Standard Ref. & Requirement	: D.3.1 E:		

The group and group manager have agreed on how the premiums should be used and the agreement is recorded and communicated to the group members. Prices, premiums, and timing of premium payment are clearly communicated and transparent to all group members. Premiums disbursed to members at all stages are recorded and the premiums are paid in a timely and convenient manner.

MS-A:

The disbursement of premiums, including price and timing of the disbursement to group members is clearly recorded

MS-B:

-

Evidence observed (filled by auditor):

Eligibility dan MS-A

There are several facts found during the audit activity, namely:

- Has Decree No. 015/SK/ICS/PPSSTS/II/2021 dated 06 February 2021 regarding the Agreement on the Plan for the Use of the RSPO Credit Sales Fund which has been determined by the Group Manager, which explains the distribution of incentives from the proceeds of the RSPO credit sales that will be obtained after obtaining RSPO certification.
- Has SOP for Credit Incentive Distribution (No. 024/SOP/ICS/PPSSTS/IV/2021) which was approved by the Group Manager on April 9, 2021, in which the explanation is the same as the previous Decree (document No. 015/SK/ICS /PPSSTS/II/2021 dated February 6, 2021).
- The results of interviews with 13 PPSSTS members in the Villages of Batas, Rambah and Tambusai Barat, it is known that after the association obtains RSPO certification, members will get more benefits from credit sales incentives, but information is related to the contents of SOPs and Decrees related to benefits/incentives This has not been socialized by the management or Group Manager.
- The results of interviews with the Group Manager and PPSSTS management, it is known that information related to getting benefits has been conveyed to members, but the contents of the SOP and Decision Letters related to the benefits/incentives are not yet known by the members. This is because the association has not yet received an RSPO certificate, so this has not been further socialized to members.

Non-Conformance Description (filled by auditor):

PPSSTS has not been able to show evidence that the plan for the distribution and use of benefits/incentives (premiums) that have been set by the Group Manager and the management has been transparently disseminated to all members of the association.

Root Cause Analysis (filled by organization audited):

PPSSTS has not received incentives so that the socialization of the SOP for the distribution of incentives is not carried out. This is due to the ICS management's misunderstanding that the incentive distribution mechanism must be socialized to all members.

Correction (filled by organization audited):

Conducting socialization related to the incentive distribution plan to all PPSSTS members.

Corrective Action (filled by organization audited):

- Provide socialization related to RSPO PnC to ICS management, which is carried out by SPKS facilitators.
- If there are additional members in the future, monitoring will be carried out by the National SPKS so that the new members will be socialized on the distribution of incentives by the ICS management.

Assessor Evaluation and Conclusion (filled by auditor):

Verification on January, 27 2022

PPSSTS has determined the root of the problem, corrective and corrective actions for discrepancies that arose at the time the assessment was carried out, besides that there was also some other supporting evidence provided including:

- Documentation and minutes of the socialization of benefit sharing to all farmers who are members of PPSSTS for the Batas Villages, Tambusai Barat, Rambah and Sungai Kumango.

- The absence of socialization of the plan for the distribution and use of benefits in Boundary Village which was held on December 4, 2021, which was attended by 47 PPSSTS members.
- The absence of socialization of the plan for the distribution and use of benefits in Rambah Village which was held on December 4, 2021, which was attended by 16 PPSSTS members.
- The absence of socialization of the plan for the distribution and use of benefits in Tambusai Barat Village which was held on December 28, 2021, which was attended by 32 PPSSTS members.
- The absence of socialization of the plan for the distribution and use of benefits in Sungai Kumango Village which was held on January 11, 2022, which was attended by 7 PPSSTS members

Based on the evidence above, there are still some things that need to be improved, namely:

- Determination of the root of the problem, where the root of the problem in question is the root of the problem that causes discrepancies in this indicator, not the basis for the importance of socialization. Please pay attention again.
- Determination of corrective action, please direct the actions taken for improvement due to non-conformities that occur.
- Determination of corrective action, please be supplemented with future plans and actions to ensure that this non-conformity will not recur in the next assessment.
- If from the improvement of the root determination, corrective and corrective actions there is additional evidence that has not been shown, please can it be shown in accordance with the determination.

Based on the explanation above, the discrepancy in this indicator is stated to have not been fulfilled.

Verification on April, 1 2022

PPSSTS has shown changes in determining the root of the problem, corrective and corrective actions along with additional evidence as follows:

- Correction of the root of the problem, corrective and corrective actions that have been improved from before so that the corrective evidence submitted is appropriate and in line with this.
- Minutes of socialization to all PPSSTS management related to the RSPO P&C for Independent Smallholders and providing understanding regarding the importance of information transparency related to the distribution of incentives to all members as well as plans for re-socialization for new members who will later join. The socialization was carried out on February 5, 2022 to as many as 11 PPSSTS administrators.

Based on the evidence and explanation above, the discrepancy in this indicator is declared to have been **fulfilled**.

Verified by	: Rindu Galih Rezza Rachmansyah
--------------------	--

NCR No.	: 2021.03	Issued by	: Rindu Galih Rezza Rachmansyah
Date Issued	: 01 December 2021	Time Limit	: 30 November 2022
NC Grade	: Major	Date of Closing	: 01 April 2022
Standard Ref. & Requirement	3.3 Are there workers on the farm? If no, SKIP Workers' pay complies with minimum legal requirements, mandatory industry standards as defined by national law or collective bargaining, whichever takes priority in local regulations E: Smallholders commit to pay workers according to minimum legal requirements or mandatory industry standards (reference 1.1 E, Annex 2) MS-A: Workers receive payments as expected and agreed in accordance with at least the legal minimum wage rate (excluding overtime premiums) and without discrimination against vulnerable groups, including women.		

MS-B:

Workers receive payments as expected and agreed in accordance with at least the legal minimum wage rate (excluding overtime premiums) and without discrimination against vulnerable groups, including women.

Evidence observed (filled by auditor):

MS-A dan MS-B

- PPSSTS already has a Work Agreement No. 92/ICS/PPSSTS/X/2020 dated October 25, 2020 between 87 members and their employees. Where in the agreement explains the type of work of each worker, the commitment of workers to follow the P&C RSPO Independent Smallholders Standard, remuneration and so on. Meanwhile, the current number of members is 102 people, so there are still 15 members who do not have a work agreement with their employees.
- Oil palm farmer's notebook which is the daily documentation of the farmers, on the last page there is a record form for proof of payment transactions for workers such as harvesting, pruning and others. From the results of the study of farmer record books with ID No. A.057, A.011 and A.048 it is known that the three members have not filled out the column since 2020-2021.
- Based on the results of interviews with as many as 13 sample members in the villages of Batas, Rambah, and Tambusai Barat, it is known that all members use workers and have paid their workers wages above the minimum wage in 2021 for every work activity that has been carried out. However, the proof of the payment of wages was never recorded by the members.
- Based on the study of the commitment declaration documents from 13 PPSSTS members who were used as sampling, it is known that in Letter D in Point 4 states the commitment of the members to pay the minimum wage in accordance with the national standard in Indonesia (the standard is the regional minimum wage).

Non-Conformance Description (filled by auditor):

PPSSTS has not been able to show sufficient evidence that the wages that have been given to the workers employed by each member are in accordance with the minimum wage setting and the declaration of commitment signed by the members and has been documented in the form of proof of payment of wages in the palm oil farmer record book provided.

Root Cause Analysis (filled by organization audited):

The proof of payment of workers' wages has not been shown in accordance with what has been stated in the farmer's record book because the previous proof of payment was too difficult for farmers so that farmers always forget to record it.

Correction (filled by organization audited):

- The management decided not to use the proof of payment of workers in the farmer's record book but to use the note/receipt of payment of wages as proof of payment to make it easier for farmers
- Document payment of workers' wages using receipts.

Corrective Action (filled by organization audited):

- ICS management carries out socialization to farmers who are members of PPSSTS, related to payment of workers' wages as evidenced in the form of receipts.
- Filing proof of payment of worker wages made by farmers at the PPSSTS office.

Assessor Evaluation and Conclusion (filled by auditor):

Verification on January, 27 2022

The PPSSTS party has determined the root of the problem, corrective and corrective actions for discrepancies that arose at the time the assessment was carried out, besides that there was also some supporting evidence provided, namely, proof of receipts for payment of workers' wages for 13 PPSSTS members who became the audit sampling in December 2021, as follows:

- Receipt of workers' wages on December 6, 2021 given by Mr. Ponimin to his workers in the amount of Rp. 150,000.
- Receipt of workers' wages on December 03, 2021 given by Mr. Hasanudin to his workers in the amount of Rp. 150,000.
- Receipt of workers' wages on December 14, 2021 given by Sister Tiarma Br Manulang to her workers amounting to Rp. 150,000.
- Receipt of workers' wages on December 5, 2021 given by Mr. Antonius Dapot Tua Sinaga to his workers in the amount of Rp. 140,000.
- Receipt of workers' wages on December 01, 2021 given by Rencus Pandiangan to his workers in the amount of Rp. 150,000.

- Receipt of workers' wages on December 11, 2021 which was given by Mr. Mangihut Sibarani to his workers in the amount of Rp. 150,000.
- Receipt of workers' wages on December 10, 2021 given by Sister Naomi S to her workers amounting to Rp. 140,000.
- Receipt of workers' wages on December 14, 2021 given by Mr. Adi Sialagan to his workers in the amount of Rp. 125,000.
- Receipt of workers' wages on December 04, 2021 which was given by Tiopan Sialagan to his workers in the amount of Rp. 140,000.
- Receipt of workers' wages on December 5, 2021, given by Mr. Jampi Simarmata to his workers in the amount of Rp. 150,000.
- Receipt of workers' wages on December 5, 2021 given by Mr. Sastrodiharjo to his workers in the amount of Rp. 150,000.
- Receipt of workers' wages on December 04, 2021 given by Sister Lamrentha Sihombing to her workers in the amount of Rp. 150,000.
- Receipt of workers' wages on December 04, 2021 given by Mr. Daulat Sinaga to his workers in the amount of Rp. 150,000.

Based on the evidence above, there are still some things that need to be improved, namely:

- Determination of the root of the problem, where the root of the problem in question is the root of the problem that causes discrepancies in this indicator, not the basis for the importance of socialization. Please pay attention again.
- Determination of corrective action, please direct the actions taken for improvement due to non-conformities that occur.
- Determination of corrective action, please be supplemented with future plans and actions to ensure that this non-conformity will not recur in the next assessment.
- If from the improvement of the root determination, corrective and corrective actions there is additional evidence that has not been shown, please can it be shown in accordance with the determination.
- Please also explain related to the use of proof of payment listed in the farmer's record book contained in each member

Based on the explanation above, the discrepancy in this indicator is stated to have not been fulfilled.

Verification on April, 1 2022

PPSSTS has shown changes in determining the root of the problem, corrective and corrective actions along with additional evidence as follows:

- Correction of the root of the problem, corrective and corrective actions that have been improved from before so that the corrective evidence submitted is appropriate and in line with this.
- Minutes of the meeting on December 8, 2021 at the PPSSTS Office to determine that the use of proof of worker payments made by farmers is no longer recorded in the farmer's notebook, but uses a receipt which will later be stored in the office. The meeting was attended by as many as 9 PPSSTS administrators.
- Evidence of socialization of changes in the recording of proof of payment of worker wages by farmers using receipts on December 10, 2021, which was attended by all PPSSTS members from the Villages of Batas, Rambah, West Tambusai and Sungai Kumango.

Based on the evidence of improvement provided along with the explanation above, this discrepancy is declared to have been fulfilled.

Verified by	:	Rindu Galih Rezza Rachmansyah
--------------------	----------	--------------------------------------

3.3.2 Identification of Findings, Corrective Actions and Observations at ASA-1

NCR No.	: 2023.01	Issued by	: Sabiah Dhiningtyas Utami/Briyogi Shadiwa
Date Issued	: 6 April 2023	Time Limit	: 5 July 2023
NC Grade	: Major	Date of Closing	: 26 June 2023
Standard Ref. & Requirement	4.8 MS-B: Smallholders implement BMPs for all pesticide use, including prohibiting use of pesticides by pregnant and breastfeeding women and young workers, and exclusion of paraquat and pesticides that are categorised as WHO Class 1A or 1B, or those listed by the Stockholm or Rotterdam Conventions, unless when authorised by relevant authorities for pest outbreaks.		
Evidence observed (filled by auditor):			
<ul style="list-style-type: none"> The results of interviews with 25 sample farmers stated that they were aware of the applicable policy (ICS Decree No: 06/SK/ICS/PPSSTS/V/2021) regarding the ban on the use of the active ingredient paraquat pesticide in weed control. However, based on the results of interviews with 1 sample farmer with the initials HII from Batas Village, it was revealed that farmers still use the contact pesticide with the active ingredient paraquat with the trademark <i>Centatop 288 SL</i> in weed control. The farmer stated that the use of the pesticide was carried out in January 2023 in the amount of 2 liters. The results of a review of the Farmer's Record Book document belonging to the farmer with the initials HII, explained that weed control that was carried out was only recorded until 2022, namely on March 16 and September 9, 2022, using a systemic pesticide with the active ingredient isopropylamine glyphosate under the trademarks <i>Tuntas</i> and <i>Kon Up</i>. The use of pesticides in 2023 has not been recorded in the Farmer's Record Book, and from the results of a review of the monitoring document of the farmer's log book, it is known that checking the Farmer's Record Book is carried out every 3 months. As a result of a field visit to the hazardous toxic and waste warehouse for a farmer with the initials HII, it was found that there were traces of <i>Centatop</i> pesticide packaging. 			
Non-Conformance Description (filled by auditor):			
PPSSTS and farmers have not been able to show sufficient evidence that the use of the active ingredient paraquat pesticide has been avoided.			
Root Cause Analysis (filled by organization audited):			
<ol style="list-style-type: none"> Socialization on paraquat pesticide has been conveyed to farmers, but in practice there are still farmers who use the paraquat pesticide. This is due to the lack of monitoring from PPSSTS management regarding the use of pesticides by farmers Socialization is still given because it is part of the PPSSTS work program and is quite effective in constructing farmers' understanding. However, in practice it turns out that outside the management's knowledge there are still farmers who use it. Farmers understand the risks that have been conveyed in socialization activities. 			
Correction (filled by organization audited):			
<ol style="list-style-type: none"> Provide socialization to all farmers about the dangers of using the paraquat pesticide. Ask farmers to comply with the commitment not to use the paraquat pesticide The management monitors the use of the paraquat pesticide every month Encouraging the commitment of farmers with the initials HII to no longer use the paraquat pesticide 			
Corrective Action (filled by organization audited):			
Monitoring the use of the paraquat pesticide in members every 4 months			
Assessor Evaluation and Conclusion (filled by auditor):			
Auditor Verification May 2nd, 2023:			
PPSSTS shows some evidence of improvement as follows:			
<ol style="list-style-type: none"> Refresh the training listed in the report on the improvement of the findings which was carried out on April 19, 2023 and was attended by 30 farmers in Batas Village. 2023 work plan document which explains that monitoring of the use of the active ingredient paraquat pesticide is carried out every 4 months, namely in April, August and December 2023 			

However, PPSSTS has not been able to demonstrate:

1. Evidence of participation of farmers with the initials HII in the socialization/refresh training agenda for the active ingredient paraquat pesticide.
2. Use of pesticides in 2023 belonging to farmers with the initials HII recorded in the Farmer's Record Book.
3. Results of monitoring the use of the active ingredient pesticide paraquat for all members in April 2023

Based on the explanation above, the discrepancy in this indicator is stated to have not been fulfilled.

Auditor Verification June 26, 2023:

PPSSTS has made an analysis of the root cause and evidence of improvement in the form of monitoring the use of the paraquat pesticide every month (one of the monitoring activity records on April 19, 2023). This is evidence of the management in ensuring that farmers no longer use pesticides with the active ingredient paraquat.

Based on the evidence of improvement provided along with the explanation above, this discrepancy is declared to have been **fulfilled** and the consistency of its application will be ensured in the next assessment.

Verified by : **Briyogi Shadiwa**

3.3.3. Opportunity for Improvement



No	Ref.	Description
1	3.5 MS-B	<p>Workers, including smallholder family members, have access to safe working conditions and amenities that include:</p> <ul style="list-style-type: none"> • Safe and adequate housing, where applicable; • Access to basic first aid supplies; • Health and safety equipment, including minimum personal protective equipment (PPE) if appropriate for the type of work; • Adequate drinking water; • Access to toilets <p>PPSSTS and farmers have the opportunity to ensure that all work is carried out in safe working conditions and adequate facilities, such as but not limited to the use of PPE, first aid supplies, and others.</p>
2	4.6 MS A	<p>There is no physical evidence of new burning (after eligibility) for land preparation for oil palm by smallholders. Smallholders complete training on and are aware of:</p> <ul style="list-style-type: none"> • Alternatives to fire for land preparation and farm waste management (where appropriate and possible) • Alternatives to fire for pest control • Fire prevention and how to respond to and manage fires in their community and village. <p>PPSSTS and farmers have the opportunity to form a firefighting organizational structure, monitor potential fires on a regular basis and fulfill land fire extinguishing facilities and infrastructure in stages</p>
3	4.8 MS A	<p>Smallholders complete training on BMPs for pesticides including pesticide usage, awareness on risks for pregnant and breastfeeding women and young workers; storage and disposal; paraquat and pesticides listed by WHO Class 1A or 1B, the Stockholm or Rotterdam Conventions (and in compliance with 3.5).</p> <p>PPSSTS and farmers have the opportunity to ensure monitoring of pesticide use and managing used pesticide packaging in accordance with applicable policies.</p>

3.3.4. Noteworthy Positive Components

No	Description
1	Good relations with government agencies.
2	There have been no cases of fire for the last 3 years.
3	Excellent Information Disclosure.

3.4 Summary of Arising Issues from Public and Auditor Verification

Public Issues (Institution/ NGO/Community)	Auditor Verification
<p>Environmental Agency, Rokan Hulu Districts April 05th, 2023</p> <ul style="list-style-type: none"> • SPPL is integrated with NIB and the SPPL creation process uses OSS. • no cases of environmental pollution. • Good cooperative relationship with the village government. • PPSSTS has been orderly in waste management. 	<p>There's no negative issue need to be further clarification</p>
<p>Plantation Agency, Rokan Hulu Districts April 05th, 2023</p> <ul style="list-style-type: none"> • PPSSTS farmer members is creation process STDB. • for the past 3 years there have been no cases of land fires • There were no cases of land claims or land overlapping. • PPSSTS assists the government in making government programs successful. 	<p>There's no negative issue need to be further clarification</p>
<p>Management Representative Batas Village April 04th, 2023</p> <ul style="list-style-type: none"> • There are no information/complaint related to environmental pollution • The positive impact that is felt is that quite a lot of workers are recruited by the Assosiation • there were no land fires from the activities of the Tambusai Association farmers • land certificates and land boundaries are clear so that there are no land conflicts 	<p>There are no negative issues that need further verification.</p>
<p>Management Representative Tambusai Barat Village April 04th, 2023</p> <ul style="list-style-type: none"> • With the Tambusai association, farmers have a better understanding of oil palm plantation management • Farmers understand more about environmental responsibility • land certificates and land boundaries are clear so that there are no land conflicts • The positive impact that is felt is that quite a lot of workers are recruited by the Assosiation 	<p>There are no negative issues that need further verification.</p>
<p>Management Representative Sungai Kumango Village April 04th, 2023</p> <ul style="list-style-type: none"> • Many farmers get various training and socialization of oil palm plantation management from the Tambusai association • There are no information/complaint related to environmental pollution • there were no land fires from the activities of the Tambusai Association farmers • land certificates and land boundaries are clear so that there are no land conflicts • Farmers understand more about environmental responsibility 	<p>There are no negative issues that need further verification.</p>

4.0	CERTIFIED ORGANISATION'S ACKNOWLEDGEMENT OF INTERNAL RESPONSIBILITY
4.1	Formal Sign-off of Assessment Findings
	<p>Hereunder sign by management representative from inspected company to acknowledge a field assessment and agree for all content explained in this assessment report, included of non-compliance findings.</p> <p style="text-align: center;">Signed on behalf of:</p> <div style="display: flex; justify-content: space-around; align-items: flex-end;"> <div style="text-align: center;"> <p>Perkumpulan Petani Sawit Swadaya Tambusai Sejahtera Group Manager</p>  <p><u>Mardoli Pasaribu</u> Monday, 26 June 2023</p> </div> <div style="text-align: center;"> <p>Mutuagung Lestari Lead Auditor</p>  <p><u>Briyogi Shadiwa</u> Monday, 26 June 2023</p> </div> </div>

Appendix 1. List of Stakeholder Contacted in the RSPO Certification Process

No	Institution/ NGO/ Community	Address	Phone/ Email	Type of Communication	Date of Contact	Response	
						Yes	No
1	Plantation Agency	Rokan Hulu Regency	-	By Phone	05 April 2023	√	
2	Environment Agency	Rokan Hulu Regency	-	By Phone	05 April 2023	√	
3	9 Farmers Sampling from Batas Village farmer group	Rokan Hulu Regency	-	Direct Interview	04 April 2023	√	
4	12 Farmers Sampling from Tambusai Barat Village farmer group	Rokan Hulu Regency	-	Direct Interview	04 April 2023	√	
5	7 Farmers Sampling from Sungai Kumango Village farmer group	Rokan Hulu Regency	-	Direct Interview	04 April 2023	√	
6	Management Representative of Assosiations (<i>Petani Sawit Swadaya Tambusai Sejahtera</i>)	Rokan Hulu Regency	-	Direct Interview	04 April 2023	√	
7	Four ICS Staff	Rokan Hulu Regency	-	Direct Interview	04 April 2023	√	
8	Management Representative Batas Village	Rokan Hulu Regency	-	Direct Interview	04 April 2023	√	
9	Management Representative Tambusai Barat Village	Rokan Hulu Regency	-	Direct Interview	04 April 2023	√	
10	Management Representative Sungai Kumango Village	Rokan Hulu Regency	-	Direct Interview	04 April 2023	√	
11	Sawit Watch	Indonesia	info@sawitwatch.or.id	Email	21 March 2023		√
12	Greepeace	Indonesia	supporterservices.id@greenpeace.org	Email	21 March 2023		√
13	Perkumpulan Elang	Indonesia	sekretariat@elang.or.id	Email	21 March 2023		√
14	Jikalahari	Indonesia	sekretariat@jikalahari.org	Email	21 March 2023		√

Appendix 2. Assessment Program

DATE	3 – 6 April 2023	
PLANNED TIME	PROCESSES / CLAUSES TO BE AUDITED	AUDITOR
Monday (Senin), 3 April 2023		
06.05 – 07.45	JAKARTA → PEKANBARU	All Auditor
08.00 – 13.00	PEKANBRU → PERKUMPULAN PETANI SAWIT SWADAYA TAMBUSAI SEJAHTERA	All Auditor
14.00 – 15.00	Opening Meeting: <ul style="list-style-type: none"> Auditee Speech (Introduction of PIC, Profile of Certified Management Unit) Auditor Team Speech (Introduction, Audit Objective, Audit Scope, Audit Plan Discussion, Determine of Audit Sample, Transparency and Confidentiality Clarification) 	All Auditor
15.00 – 16.00	Document review and completing audit checklist.	All Auditor
Tuesday (Selasa), 4 April 2023		
08.00 – 12.00	Field Observation on (Members Area Sampling) Aspect to be verified: <ul style="list-style-type: none"> Implementation of Legal Aspect Implementation of Agronomy Aspect Implementation of Environmental, Conservation/HCV and Waste Management Aspect. Implementation of Occupational Health & Safety Aspect Implementation of Employment Procedure and Mechanism Aspect Public consultation with stakeholder to relevant agency in Rokan Hulu Regency (surrounding village representative and government agency) by Phone / Directly.	1 Auditor for each Member Group sample
12.00 – 14.00	Break	All Auditor
14.00 – 17.00	<ul style="list-style-type: none"> Document review and completing audit checklist. Presentation of Daily Progress 	All Auditor
Wednesday (Rabu), 5 April 2023		
08.00 – 12.00	Document review and completing audit checklist.	All Auditor
12.00 – 14.00	Break	All Auditor
14.00 – 17.00	<ul style="list-style-type: none"> Document review and completing audit checklist. Presentation of Daily Progress 	All Auditor
Thursday (Kamis), 6 April 2023		
08.00 – 09.30	Closing Meeting: <ul style="list-style-type: none"> Presentation of audit findings (Noteworthy Positive Component, Non-Conformities, OFI, Timeline of CAR's, Conclusion) Comments, Responses and Questions 	All Auditor
09.30 – 15.00	PERKUMPULAN PETANI SAWIT SWADAYA TAMBUSAI SEJAHTERA → PEKANBARU	All Auditor
17.30 – 19.15	PEKANBARU → JAKARTA	

Appendix 3. Smallholder Data

No	Smallholder Name	Location		Coordinate		Area (Ha)		Actual FFB production (MT/Year)	Yield (MT/Ha / Year)	Projection FFB Production (MT/Year)	Yield Projection (MT/Ha/ Year)	Date of Joining	Date of Leaving
				Latitude (N)	Longitude (E)	Total Area	Production Area						
1	Sadaukur Br Ginting	Batas	Rokan Hulu	1° 0' 2,885" N	100° 17' 9,435" E	1.50	1.50	26.33	17.55	33.50	22.33	01/02/2020	
2	Nerlin Br Sihotang	Batas	Rokan Hulu	1° 2' 22,090" N	100° 17' 0,142" E	1.00	1.00	19.29	19.29	21.15	21.15	01/03/2020	
3	Pardamean Simbolon	Batas	Rokan Hulu	1° 0' 12,954" N	100° 17' 2,279" E	2.00	2.00	34.15	17.08	41.19	20.60	01/03/2020	
4	Bonor Br Silaban A	Batas	Rokan Hulu	1° 0' 33,447" N	100° 15' 45,768" E	1.80	1.80	34.01	18.90	33.50	18.61	01/03/2020	
	Bonor Br Silaban B	Batas	Rokan Hulu	1° 0' 33,804" N	100° 15' 42,587" E	2.00	2.00	36.41	18.21	41.19	20.60	01/03/2020	
5	Lamria Br Hutabarat	Batas	Rokan Hulu	1° 0' 12,798" N	100° 17' 7,765" E	1.00	1.00	20.40	20.40	21.15	21.15	01/03/2020	
6	Nurhaida Br Manurung	Batas	Rokan Hulu	1° 0' 0,223" N	100° 17' 1,824" E	2.00	2.00	34.76	17.38	41.19	20.60	01/03/2020	
7	Monang Situmorang	Batas	Rokan Hulu	1° 0' 6,563" N	100° 16' 50,257" E	2.00	2.00	33.73	16.86	41.19	20.60	01/03/2020	
8	Mariana Br Situmorang	Batas	Rokan Hulu	1° 0' 3,837" N	100° 16' 58,727" E	1.20	1.20	18.68	15.56	21.15	17.63	01/03/2020	
9	Wagiman	Batas	Rokan Hulu	1° 0' 10,400" N	100° 16' 49,647" E	2.00	2.00	36.01	18.00	41.19	20.60	01/03/2020	
10	Sofiah	Batas	Rokan Hulu	0° 59' 51,422" N	100° 16' 8,315" E	1.68	1.68	23.69	14.10	33.50	19.94	01/03/2020	
11	Tua Manalu	Batas	Rokan Hulu	1° 1' 23,143" N	100° 15' 52,312" E	0.96	0.96	18.20	18.96	20.00	20.83	01/03/2020	
12	Hasudungan Sinaga	Batas	Rokan Hulu	1° 0' 57,701" N	100° 15' 24,358" E	2.00	2.00	33.89	16.95	41.19	20.60	01/03/2020	
13	Jepri Andi Lumban Raja	Batas	Rokan Hulu	1° 1' 1,538" N	100° 15' 40,966" E	1.07	1.07	16.80	15.55	21.15	19.58	01/03/2020	
14	Jahotman Manalu	Batas	Rokan Hulu	1° 0' 54,799" N	100° 15' 38,845" E	2.00	2.00	34.46	17.23	41.19	20.60	01/03/2020	
15	Sutarno	Batas	Rokan Hulu	1° 1' 26,788" N	100° 16' 13,964" E	1.44	1.44	20.66	14.35	21.15	14.69	01/03/2020	
16	Hasanudin A	Batas	Rokan Hulu	1° 0' 25,658" N	100° 16' 44,761" E	1.92	1.92	18.84	9.81	41.19	21.46	01/03/2020	
	Hasanudin B	Batas	Rokan Hulu	1° 0' 18,448" N	100° 16' 47,361" E	1.90	1.90	17.98	9.46	41.19	21.68	01/03/2020	
17	Ramsaida Br Sinaga A	Batas	Rokan Hulu	1° 0' 19,209" N	100° 15' 29,731" E	1.60	1.60	19.04	11.90	33.50	20.94	01/03/2020	
	Ramsaida Br Sinaga B	Batas	Rokan Hulu	1° 0' 40,368" N	100° 15' 49,332" E	1.00	1.00	18.52	18.52	21.15	21.15	01/03/2020	
18	Abu Bakar	Batas	Rokan Hulu	1° 0' 6,828" N	100° 16' 6,092" E	1.91	1.91	18.00	9.43	41.19	21.57	01/03/2020	
19	Junedi A	Batas	Rokan Hulu	1° 0' 10,053" N	100° 16' 55,507" E	1.50	1.50	27.23	18.16	33.50	22.33	01/03/2020	
	Junedi B	Batas	Rokan Hulu	1° 0' 12,692" N	100° 16' 59,038" E	1.70	1.70	32.57	19.16	33.50	19.71	01/03/2020	
20	Marsim A	Batas	Rokan Hulu	1° 0' 15,872" N	100° 16' 53,319" E	1.60	1.60	28.80	18.00	33.50	20.94	01/03/2020	
	Marsim B	Batas	Rokan Hulu	1° 0' 14,609" N	100° 16' 57,888" E	0.60	0.60	12.18	20.31	9.19	15.32	01/03/2020	
21	Daulat Sinaga A	Batas	Rokan Hulu	1° 0' 20,566" N	100° 15' 45,673" E	1.70	1.70	32.17	18.92	33.50	19.71	01/03/2020	

	Daulat Sinaga B	Batas	Rokan Hulu	1° 0' 19,632" N	100° 15' 39,712" E	1.90	1.90	35.19	18.52	41.19	21.68	01/03/2020	
	Daulat Sinaga C	Batas	Rokan Hulu	1° 0' 54,159" N	100° 15' 34,382" E	2.10	2.10	36.26	17.27	41.19	19.61	01/03/2020	
	Daulat Sinaga D	Batas	Rokan Hulu	1° 0' 16,189" N	100° 15' 49,069" E	2.10	2.10	34.60	16.47	41.19	19.61	01/03/2020	
22	Sastrodiharjo A	Batas	Rokan Hulu	1° 0' 1,099" N	100° 16' 37,821" E	1.50	1.50	29.22	19.48	33.50	22.33	01/03/2020	
	Sastrodiharjo B	Batas	Rokan Hulu	0° 59' 53,805" N	100° 16' 26,161" E	1.90	1.90	38.44	20.23	41.19	21.68	01/03/2020	
	Sastrodiharjo C	Batas	Rokan Hulu	0° 59' 58,890" N	100° 16' 34,884" E	1.70	1.70	30.88	18.16	33.50	19.71	01/03/2020	
	Sastrodiharjo D	Batas	Rokan Hulu	1° 0' 4,389" N	100° 16' 30,369" E	0.70	0.70	13.41	19.15	20.00	28.57	01/03/2020	
	Sastrodiharjo E	Batas	Rokan Hulu	1° 0' 15,082" N	100° 16' 38,636" E	2.00	2.00	36.46	18.23	41.19	20.60	01/03/2020	
	Sastrodiharjo F	Batas	Rokan Hulu	0° 59' 56,548" N	100° 16' 30,453" E	1.90	1.90	38.56	20.29	41.19	21.68	01/03/2020	
23	Azhariah	Batas	Rokan Hulu	1° 0' 31,140" N	100° 16' 10,163" E	0.80	0.80	14.76	18.45	20.00	25.00	01/03/2020	
24	Marojahan Hutasoit	Batas	Rokan Hulu	1° 1' 52,106" N	100° 17' 2,957" E	2.00	2.00	36.24	18.12	41.19	20.60	01/03/2020	
25	Wilson Siregar A	Batas	Rokan Hulu	1° 2' 5,921" N	100° 17' 0,912" E	2.00	2.00	36.77	18.39	41.19	20.60	01/03/2020	
	Wilson Siregar B	Batas	Rokan Hulu	1° 2' 2,110" N	100° 17' 1,291" E	0.50	0.50	12.59	25.18	9.19	18.38	01/03/2020	
26	Maruli Tua Marbun	Batas	Rokan Hulu	1° 0' 51,588" N	100° 15' 28,465" E	2.00	2.00	33.95	16.97	41.19	20.60	01/03/2020	
27	Pahotner Lumban gaol A	Batas	Rokan Hulu	1° 0' 3,325" N	100° 15' 37,914" E	1.20	1.20	20.09	16.75	21.15	17.63	01/03/2020	
	Pahotner Lumban gaol B	Batas	Rokan Hulu	1° 0' 2,085" N	100° 15' 35,029" E	1.10	1.10	19.31	17.55	21.15	19.23	01/03/2020	
28	Saji	Batas	Rokan Hulu	0° 59' 56,174" N	100° 16' 18,068" E	1.00	1.00	18.63	18.63	21.15	21.15	01/03/2020	
29	Jumitar Hutahaeen	Batas	Rokan Hulu	0° 59' 54,238" N	100° 16' 33,546" E	1.90	1.90	20.00	10.53	41.19	21.68	01/03/2020	
30	Manuntun Sinaga	Batas	Rokan Hulu	1° 2' 2,169" N	100° 16' 10,788" E	1.50	1.50	20.68	13.79	33.50	22.33	01/03/2020	
31	Hotma Rosmaida Br Sihombing A	Batas	Rokan Hulu	0° 59' 53,946" N	100° 15' 35,302" E	1.00	1.00	19.71	19.71	21.15	21.15	01/03/2020	
	Hotma Rosmaida Br Sihombing B	Batas	Rokan Hulu	0° 59' 54,947" N	100° 17' 34,303" E	0.87	0.87	14.11	16.27	20.00	23.07	01/03/2020	
	Hotma Rosmaida Br Sihombing C	Batas	Rokan Hulu	1° 0' 4,887" N	100° 15' 35,184" E	1.00	1.00	21.03	21.03	21.15	21.15	01/03/2020	
32	Ponimin A	Batas	Rokan Hulu	1° 0' 18,786" N	100° 16' 43,955" E	1.80	1.80	29.27	16.26	33.50	18.61	01/03/2020	
	Ponimin B	Batas	Rokan Hulu	1° 0' 22,087" N	100° 16' 30,038" E	2.00	2.00	34.24	17.12	41.19	20.60	01/03/2020	
33	Misdi	Batas	Rokan Hulu	0° 59' 58,496" N	100° 16' 18,971" E	0.80	0.80	15.87	19.83	20.00	25.00	01/03/2020	
34	Jatiman Simbolon A	Batas	Rokan Hulu	1° 0' 33,866" N	100° 17' 9,932" E	2.00	2.00	33.22	16.61	41.19	20.60	01/03/2020	
35	Robertus Gultom A	Batas	Rokan Hulu	1° 1' 55,070" N	100° 15' 32,818" E	2.00	2.00	35.50	17.75	41.19	20.60	01/03/2020	
	Robertus Gultom B	Batas	Rokan Hulu	1° 1' 49,613" N	100° 15' 48,583" E	1.30	1.30	17.24	13.26	21.15	16.27	01/03/2020	
36	Mindo Tua Siahaan	Batas	Rokan Hulu	1° 0' 24,323" N	100° 17' 2,996" E	1.00	1.00	20.80	20.80	21.15	21.15	01/03/2020	
37	Sugiman A	Batas	Rokan Hulu	1° 0' 9,797" N	100° 16' 3,104" E	2.00	2.00	34.31	17.15	41.19	20.60	01/03/2020	
	Sugiman B	Batas	Rokan Hulu	1° 0' 6,798" N	100° 17' 4,195" E	1.00	1.00	20.83	20.83	21.15	21.15	01/03/2020	

38	Rohani Sagala	Batas	Rokan Hulu	1° 0' 26,479" N	100° 15' 44,623" E	2.00	2.00	33.76	16.88	41.19	20.60	01/03/2020	
39	James Hatoguan Pasaribu A	Batas	Rokan Hulu	1° 0' 26,681" N	100° 16' 7,476" E	1.40	1.40	21.29	15.21	21.15	15.11	01/03/2020	
	James Hatoguan Pasaribu B	Batas	Rokan Hulu	1° 1' 52,753" N	100° 15' 43,349" E	1.60	1.60	20.69	12.93	33.50	20.94	01/03/2020	
40	Eni Dameria Br Hutasoit A	Batas	Rokan Hulu	1° 1' 43,060" N	100° 16' 26,704" E	2.00	2.00	34.02	17.01	41.19	20.60	01/03/2020	
	Eni Dameria Br Hutasoit B	Batas	Rokan Hulu	1° 1' 43,446" N	100° 16' 36,477" E	1.00	1.00	19.95	19.95	21.15	21.15	01/03/2020	
	Eni Dameria Br Hutasoit C	Batas	Rokan Hulu	1° 1' 43,480" N	100° 16' 38,601" E	1.40	1.40	21.80	15.57	21.15	15.11	01/03/2020	
41	Martua Situmorang A	Batas	Rokan Hulu	1° 1' 41,501" N	100° 16' 33,303" E	1.50	1.50	21.87	14.58	33.50	22.33	01/03/2020	
	Martua Situmorang B	Batas	Rokan Hulu	1° 1' 37,841" N	100° 16' 40,753" E	2.00	2.00	34.91	17.45	41.19	20.60	01/03/2020	
42	Marudut Siboro A	Batas	Rokan Hulu	0° 59' 51,480" N	100° 16' 49,031" E	0.40	0.40	11.11	27.78	9.19	22.98	01/03/2020	
	Marudut Siboro B	Batas	Rokan Hulu	0° 59' 45,502" N	100° 17' 15,924" E	1.60	1.60	22.30	13.94	33.50	20.94	01/03/2020	
43	Lambok Silahahi	Batas	Rokan Hulu	1° 0' 3,292" N	100° 17' 30,463" E	1.50	1.50	22.26	14.84	33.50	22.33	01/03/2020	
44	Simeon Sihombing A	Batas	Rokan Hulu	0° 59' 49,988" N	100° 16' 15,763" E	2.00	2.00	34.79	17.39	41.19	20.60	01/03/2020	
	Simeon Sihombing B	Batas	Rokan Hulu	1° 0' 16,813" N	100° 17' 2,273" E	2.00	2.00	31.08	15.54	41.19	20.60	01/03/2020	
45	Risma Br Silaen A	Batas	Rokan Hulu	1° 1' 11,693" N	100° 15' 1,959" E	2.00	2.00	32.62	16.31	41.19	20.60	01/03/2020	
	Risma Br Silaen B	Batas	Rokan Hulu	1° 1' 37,069" N	100° 16' 31,796" E	2.00	2.00	33.36	16.68	41.19	20.60	01/03/2020	
46	Roy Parulian Panjaitan A	Batas	Rokan Hulu	1° 1' 11,894" N	100° 15' 9,070" E	1.96	1.96	37.69	19.23	41.19	21.02	01/03/2020	
	Roy Parulian Panjaitan B	Batas	Rokan Hulu	1° 1' 8,641" N	100° 15' 12,589" E	2.90	2.90	55.62	19.18	41.19	14.20	01/03/2020	
47	Lamrentha Sihombing A	Batas	Rokan Hulu	1° 0' 16,263" N	100° 15' 38,720" E	2.00	2.00	35.07	17.53	41.19	20.60	01/03/2020	
	Lamrentha Sihombing B	Batas	Rokan Hulu	1° 0' 32,238" N	100° 15' 59,174" E	1.00	1.00	20.27	20.27	21.15	21.15	01/03/2020	
	Lamrentha Sihombing C	Batas	Rokan Hulu	1° 0' 15,168" N	100° 15' 34,404" E	2.00	2.00	34.95	17.47	41.19	20.60	01/03/2020	
	Lamrentha Sihombing D	Batas	Rokan Hulu	1° 0' 25,922" N	100° 15' 40,776" E	2.00	2.00	36.77	18.38	41.19	20.60	01/03/2020	
	Lamrentha Sihombing E	Batas	Rokan Hulu	1° 0' 25,524" N	100° 15' 38,404" E	2.00	2.00	33.26	16.63	41.19	20.60	01/03/2020	
	Lamrentha Sihombing F	Batas	Rokan Hulu	1° 0' 26,193" N	100° 15' 42,720" E	1.00	1.00	20.11	20.11	21.15	21.15	01/03/2020	
48	Fauzy Sochi Zebua	Batas	Rokan Hulu	1° 1' 21,364" N	100° 16' 7,089" E	2.00	2.00	38.11	19.05	41.19	20.60	05/02/2022	
49	Bajongga Manullang	Batas	Rokan Hulu	1° 2' 15,999" N	100° 16' 38,959" E	6.00	6.00	152.63	25.44	108.82	18.14	05/02/2022	
50	Meriati Br. Silaban	Batas	Rokan Hulu	1° 2' 10,933" N	100° 16' 36,348" E	4.00	4.00	99.34	24.83	70.80	17.70	05/02/2022	
51	Maria Sonti Friska Manullang	Batas	Rokan Hulu	1° 2' 5,153" N	100° 16' 37,076" E	5.20	5.20	130.25	25.05	73.60	14.15	05/02/2022	
52	Hary Ikhsan Irawan	Batas	Rokan Hulu	1° 1' 5,729" N	100° 16' 16,824" E	1.00	1.00	21.23	21.23	21.15	21.15	05/02/2022	
53	Ratnawati	Batas	Rokan Hulu	1° 0' 53,611" N	100° 16' 25,904" E	1.00	1.00	21.38	21.38	21.15	21.15	05/02/2022	
54	Sutrisno	Batas	Rokan Hulu	1° 0' 6,006" N	100° 17' 12,475" E	1.30	1.30	28.34	21.80	21.15	16.27	05/02/2022	
55	Eslita Manik	Batas	Rokan Hulu	1° 2' 16,958" N	100° 16' 29,984" E	6.00	6.00	151.27	25.21	108.82	18.14	05/02/2022	

56	Misriani A	Batas	Rokan Hulu	1° 0' 13,489" N	100° 17' 11,142" E	1.21	1.21	24.70	20.41	21.15	17.48	05/02/2022
	Misriani B	Batas	Rokan Hulu	1° 0' 14,928" N	100° 17' 19,634" E	1.73	1.73	20.66	11.94	33.50	19.36	05/02/2022
57	Wandi Siringo-ringo A	Batas	Rokan Hulu	1° 0' 30,252" N	100° 17' 5,267" E	2.88	2.88	65.00	22.57	41.19	14.30	05/02/2022
	Wandi Siringo-ringo B	Batas	Rokan Hulu	1° 1' 43,660" N	100° 16' 58,023" E	1.68	1.68	41.33	24.60	33.50	19.94	05/02/2022
58	Tiomian Rentina Br. Nainggolan	Batas	Rokan Hulu	1° 0' 31,526" N	100° 15' 49,270" E	0.96	0.96	20.63	21.49	20.00	20.83	05/02/2022
59	Jumas Sinaga A	Batas	Rokan Hulu	0° 59' 52,300" N	100° 15' 39,923" E	0.98	0.98	21.46	21.90	20.00	20.41	05/02/2022
	Jumas Sinaga B	Batas	Rokan Hulu	0° 59' 59,570" N	100° 15' 39,541" E	0.96	0.96	22.36	23.29	20.00	20.83	05/02/2022
	Jumas Sinaga C	Batas	Rokan Hulu	1° 0' 11,416" N	100° 15' 42,151" E	0.56	0.56	13.02	23.25	9.19	16.41	05/02/2022
60	Lesson Siringo-ringo A	Batas	Rokan Hulu	1° 0' 28,987" N	100° 17' 10,379" E	2.30	2.30	43.14	18.76	43.60	18.96	05/02/2022
	Lesson Siringo-ringo B	Batas	Rokan Hulu	1° 0' 27,787" N	100° 15' 34,308" E	0.99	0.99	21.33	21.54	20.00	20.20	05/02/2022
61	Jonnes Tigor Sinaga	Batas	Rokan Hulu	0° 58' 33,010" N	100° 17' 34,374" E	0.75	0.75	15.93	21.23	20.00	26.67	05/02/2022
62	Muhammad Riski A	Batas	Rokan Hulu	1° 0' 21,060" N	100° 16' 39,779" E	0.50	0.50	14.60	29.20	9.19	18.38	05/02/2022
	Muhammad Riski B	Batas	Rokan Hulu	1° 0' 26,660" N	100° 16' 42,241" E	0.47	0.47	11.07	23.54	9.19	19.55	05/02/2022
	Muhammad Riski C	Batas	Rokan Hulu	1° 0' 11,725" N	100° 16' 41,159" E	0.53	0.53	12.90	24.34	9.19	17.34	05/02/2022
	Muhammad Riski D	Batas	Rokan Hulu	1° 0' 29,722" N	100° 15' 56,944" E	1.32	1.32	27.50	20.83	21.15	16.02	05/02/2022
63	Samsul Arifin A	Batas	Rokan Hulu	0° 59' 34,170" N	100° 16' 55,393" E	1.20	1.20	23.68	19.73	21.15	17.63	05/02/2022
	Samsul Arifin B	Batas	Rokan Hulu	0° 59' 29,692" N	100° 17' 1,879" E	1.02	1.02	21.63	21.20	21.15	20.74	05/02/2022
	Samsul Arifin C	Batas	Rokan Hulu	0° 58' 23,988" N	100° 17' 15,055" E	1.47	1.47	29.92	20.36	21.15	14.39	05/02/2022
64	Lumida Br. Manullang	Batas	Rokan Hulu	1° 0' 10,685" N	100° 17' 29,479" E	8.00	8.00	204.10	25.51	136.70	17.09	05/02/2022
65	Anto Manik	Batas	Rokan Hulu	1° 0' 7,115" N	100° 17' 18,896" E	6.00	6.00	146.22	24.37	108.82	18.14	05/02/2022
66	Noben Manik	Batas	Rokan Hulu	1° 0' 16,467" N	100° 17' 33,225" E	5.74	5.74	136.96	23.86	79.85	13.91	05/02/2022
67	Erwita Dewi Hutasoit A	Batas	Rokan Hulu	0° 59' 41,914" N	100° 16' 38,618" E	1.10	1.10	19.11	17.37	21.15	19.23	05/02/2022
	Erwita Dewi Hutasoit B	Batas	Rokan Hulu	1° 1' 35,806" N	100° 15' 56,000" E	1.60	1.60	31.69	19.80	33.50	20.94	05/02/2022
	Erwita Dewi Hutasoit C	Batas	Rokan Hulu	1° 1' 37,553" N	100° 16' 12,505" E	1.90	1.90	39.77	20.93	41.19	21.68	05/02/2022
68	Eva S Hutabarat A	Batas	Rokan Hulu	1° 2' 11,867" N	100° 19' 18,888" E	1.36	1.36	24.10	17.72	21.15	15.55	05/02/2022
	Eva S Hutabarat B	Batas	Rokan Hulu	1° 2' 31,942" N	100° 19' 16,889" E	1.89	1.89	39.80	21.06	41.19	21.79	05/02/2022
69	Frans M Siringo-ringo A	Batas	Rokan Hulu	1° 1' 11,872" N	100° 15' 15,191" E	2.06	2.06	37.62	18.26	41.19	20.00	05/02/2022
	Frans M Siringo-ringo B	Batas	Rokan Hulu	1° 1' 27,667" N	100° 15' 13,125" E	1.77	1.77	33.78	19.09	33.50	18.93	05/02/2022
70	David Purba	Batas	Rokan Hulu	1° 0' 1,190" N	100° 16' 10,357" E	2.00	2.00	38.35	19.17	41.19	20.60	05/02/2022
71	Petrus Ranto	Batas	Rokan Hulu	0° 59' 57,359" N	100° 16' 49,446" E	2.00	2.00	40.09	20.04	41.19	20.60	05/02/2022
72	Jonnes Tua Manurung A	Batas	Rokan Hulu	1° 1' 34,132" N	100° 15' 2,169" E	1.59	1.59	30.21	19.00	33.50	21.07	05/02/2022

	Jonnes Tua Manurung B	Batas	Rokan Hulu	1° 1' 38,590" N	100° 16' 24,781" E	1.61	1.61	33.81	21.00	33.50	20.81	05/02/2022	
73	Rosneli BR.Manik A	Batas	Rokan Hulu	1° 0' 58,883" N	100° 16' 56,359" E	0.75	0.75	14.12	18.82	20.00	26.67	05/02/2022	
	Rosneli BR.Manik B	Batas	Rokan Hulu	1° 1' 27,486" N	100° 15' 39,681" E	0.63	0.63	14.69	23.32	9.19	14.59	05/02/2022	
74	Hepi Firmansyah Simatupang	Batas	Rokan Hulu	1° 1' 43,135" N	100° 16' 40,337" E	1.09	1.09	19.85	18.21	21.15	19.40	05/02/2022	
75	Obed Ortega Sinaga	Batas	Rokan Hulu	1° 0' 51,587" N	100° 16' 4,550" E	1.00	1.00	24.49	24.49	21.15	21.15	05/02/2022	
76	Kasdin Sinambela	Batas	Rokan Hulu	1° 1' 57,926" N	100° 16' 8,911" E	1.70	1.70	29.78	17.52	33.50	19.71	05/02/2022	
77	Efraim Kampar Siringo-ningo A	Batas	Rokan Hulu	1° 1' 29,607" N	100° 17' 6,313" E	2.35	2.35	40.20	17.11	41.19	17.53	05/02/2022	
	Efraim Kampar Siringo-ningo A	Batas	Rokan Hulu	1° 1' 29,607" N	100° 17' 6,313" E	0.67	0.67	13.18	19.67	9.19	13.72	05/02/2022	
78	Peres Siringo-ningo A	Batas	Rokan Hulu	1° 1' 17,571" N	100° 17' 13,523" E	0.38	0.38	6.66	17.52	9.19	24.18	05/02/2022	
	Peres Siringo-ningo B	Batas	Rokan Hulu	1° 1' 15,311" N	100° 17' 9,357" E	0.95	0.95	17.84	18.78	20.00	21.05	05/02/2022	
79	Luksia Br.Sinaga	Batas	Rokan Hulu	1° 0' 25,554" N	100° 15' 37,602" E	1.00	1.00	23.17	23.17	21.15	21.15	05/02/2022	
80	Resti Natalia .S	Batas	Rokan Hulu	1° 2' 42,694" N	100° 19' 22,640" E	5.50	5.50	130.92	23.80	79.85	14.52	05/02/2022	
81	R.B. Anthonius A	Batas	Rokan Hulu	1° 2' 5,307" N	100° 15' 33,683" E	0.86	0.86	17.20	20.00	20.00	23.26	05/02/2022	
	R.B. Anthonius B	Batas	Rokan Hulu	1° 3' 5,361" N	100° 16' 31,394" E	1.60	1.60	33.92	21.20	33.50	20.94	05/02/2022	
82	Ampu Br Situmorang	Batas	Rokan Hulu	1° 0' 52,750" N	100° 16' 48,845" E	0.94	0.94	17.80	18.93	20.00	21.28	05/02/2022	
83	Togar Purba	Batas	Rokan Hulu	0° 59' 49,430" N	100° 15' 52,057" E	1.76	1.76	37.02	21.03	33.50	19.03	05/02/2022	
84	Ikut Manalu	Batas	Rokan Hulu	1° 2' 25,741" N	100° 16' 9,369" E	1.60	1.60	35.37	22.11	21.15	13.22	05/02/2022	
85	Marta Hutapea	Batas	Rokan Hulu	1° 2' 5,092" N	100° 15' 3,479" E	9.39	9.39	228.90	24.38	176.60	18.81	05/02/2022	
86	Juliani	Batas	Rokan Hulu	0° 59' 54,576" N	100° 16' 6,991" E	1.15	1.15	19.90	17.31	21.15	18.39	05/02/2022	
87	Maraganti Hasibuan	Rambah	Rokan Hulu	1° 0' 26,690" N	100° 16' 2,834" E	1.35	1.35	17.70	13.11	41.19	30.51	01/03/2020	
88	Naomi Uli Amsa Siregar	Rambah	Rokan Hulu	1° 0' 1,358" N	100° 16' 56,904" E	1.00	1.00	20.37	20.37	33.50	33.50	01/03/2020	
89	Dapit MP Sirait	Rambah	Rokan Hulu	1° 0' 2,624" N	100° 16' 54,186" E	2.22	2.22	35.77	16.11	41.19	18.55	01/03/2020	
90	Charles Napitulu	Rambah	Rokan Hulu	0° 59' 45,714" N	100° 16' 13,262" E	1.50	1.50	21.01	14.01	41.19	27.46	01/03/2020	
91	Siswati Br Sihombing	Rambah	Rokan Hulu	1° 0' 1,279" N	100° 16' 18,890" E	2.00	2.00	31.93	15.96	33.50	16.75	01/03/2020	
92	Meddun Bronson Napitupulu	Rambah	Rokan Hulu	0° 59' 49,887" N	100° 15' 47,621" E	2.00	2.00	33.51	16.76	41.19	20.60	01/03/2020	
93	Tianur Manurung	Rambah	Rokan Hulu	0° 59' 46,165" N	100° 16' 17,547" E	1.50	1.50	25.52	17.01	41.19	27.46	01/03/2020	
94	Marasi Simanjuntak	Rambah	Rokan Hulu	1° 0' 3,690" N	100° 16' 1,869" E	2.00	2.00	33.03	16.51	41.19	20.60	01/03/2020	
95	Gunung Simarung Pane	Rambah	Rokan Hulu	0° 59' 54,803" N	100° 15' 40,053" E	2.00	2.00	32.25	16.13	41.19	20.60	01/03/2020	
96	Jampi Simarmata	Rambah	Rokan Hulu	1° 0' 5,349" N	100° 15' 46,265" E	0.98	0.98	18.17	18.54	21.15	21.58	01/03/2020	
97	Hasudungan Hutauruk A	Rambah	Rokan Hulu	0° 59' 47,096" N	100° 16' 6,882" E	0.90	0.90	16.50	18.34	21.15	23.50	01/03/2020	
	Hasudungan Hutauruk B	Rambah	Rokan Hulu	0° 56' 45,089" N	100° 14' 4,880" E	1.05	1.05	16.94	16.18	21.15	20.20	01/03/2020	

98	Parlindungan Silaban A	Rambah	Rokan Hulu	1° 2' 21,128" N	100° 17' 4,746" E	5.00	5.00	97.87	19.57	73.60	14.72	01/03/2020
	Parlindungan Silaban B	Rambah	Rokan Hulu	1° 1' 51,320" N	100° 16' 26,199" E	3.99	3.99	90.83	22.77	70.80	17.75	01/03/2020
99	Rosita Handayani A	Rambah	Rokan Hulu	1° 0' 54,772" N	100° 15' 45,234" E	1.30	1.30	20.69	15.91	41.19	31.68	01/03/2020
	Rosita Handayani B	Rambah	Rokan Hulu	0° 59' 36,943" N	100° 16' 37,240" E	0.76	0.76	14.00	18.52	21.15	27.98	01/03/2020
100	Adi Siallagan A	Rambah	Rokan Hulu	0° 59' 41,589" N	100° 16' 33,758" E	2.00	2.00	31.68	15.84	41.19	20.60	01/03/2020
	Adi Siallagan B	Rambah	Rokan Hulu	1° 0' 4,515" N	100° 15' 56,435" E	2.00	2.00	34.23	17.11	41.19	20.60	01/03/2020
	Adi Siallagan C	Rambah	Rokan Hulu	0° 59' 46,396" N	100° 16' 36,444" E	1.30	1.30	20.00	15.39	41.19	31.68	01/03/2020
	Adi Siallagan D	Rambah	Rokan Hulu	1° 0' 0,914" N	100° 16' 13,758" E	2.00	2.00	34.93	17.47	41.19	20.60	01/03/2020
	Adi Siallagan E	Rambah	Rokan Hulu	0° 59' 56,125" N	100° 16' 1,602" E	2.00	2.00	32.68	16.34	41.19	20.60	01/03/2020
	Adi Siallagan F	Rambah	Rokan Hulu	0° 59' 56,330" N	100° 16' 13,139" E	2.00	2.00	34.07	17.04	33.50	16.75	01/03/2020
101	Tiopan Siallagan A	Rambah	Rokan Hulu	0° 59' 53,367" N	100° 15' 56,562" E	1.90	1.90	35.14	18.49	33.50	17.63	01/03/2020
	Tiopan Siallagan B	Rambah	Rokan Hulu	1° 1' 17,096" N	100° 16' 30,431" E	1.50	1.50	27.06	18.04	33.50	22.33	01/03/2020
	Tiopan Siallagan C	Rambah	Rokan Hulu	1° 1' 17,808" N	100° 16' 33,927" E	1.50	1.50	26.49	17.66	20.00	13.33	01/03/2020
	Tiopan Siallagan D	Rambah	Rokan Hulu	0° 59' 0,962" N	100° 16' 35,485" E	1.64	1.64	35.00	21.34	41.19	25.12	01/03/2020
	Tiopan Siallagan E	Rambah	Rokan Hulu	0° 59' 29,765" N	100° 16' 51,313" E	0.92	0.92	19.40	21.09	21.15	22.99	01/03/2020
102	Sontaria Br Simanjuntak A	Rambah	Rokan Hulu	0° 59' 48,851" N	100° 15' 58,298" E	2.00	2.00	34.97	17.49	33.50	16.75	01/03/2020
	Sontaria Br Simanjuntak B	Rambah	Rokan Hulu	0° 59' 9,268" N	100° 16' 49,733" E	3.05	3.05	67.70	22.20	70.80	23.22	01/03/2020
	Sontaria Br Simanjuntak C	Rambah	Rokan Hulu	0° 59' 23,346" N	100° 16' 37,016" E	1.56	1.56	34.04	21.75	41.19	26.33	01/03/2020
103	Kriston Tarihoran	Rambah	Rokan Hulu	0° 58' 5,668" N	100° 16' 58,231" E	2.00	2.00	41.04	20.52	41.19	20.60	05/02/2022
104	Elkana Juliyanti Napitupulu	Rambah	Rokan Hulu	1° 0' 3,786" N	100° 17' 2,866" E	2.20	2.20	43.67	19.85	41.19	18.72	05/02/2022
105	Urfa Rahmani Karimia A	Rambah	Rokan Hulu	0° 59' 38,713" N	100° 16' 37,533" E	0.80	0.80	17.99	22.49	21.15	26.44	05/02/2022
106	Urfa Rahmani Karimia B	Rambah	Rokan Hulu	1° 0' 51,764" N	100° 16' 24,033" E	1.14	1.14	19.79	17.36	20.00	17.54	05/02/2022
107	Lamhot Mauli Nainggolan	Rambah	Rokan Hulu	0° 59' 28,250" N	100° 16' 30,650" E	1.00	1.00	24.28	24.28	21.15	21.15	05/02/2022
108	H. Br. Sitompul	Rambah	Rokan Hulu	0° 59' 27,568" N	100° 16' 55,448" E	0.70	0.70	13.83	19.76	21.15	30.21	05/02/2022
109	Widia Febri Lestari	Rambah	Rokan Hulu	1° 1' 8,413" N	100° 16' 21,243" E	1.00	1.00	22.79	22.79	20.00	20.00	05/02/2022
110	Percaya Domi Irene Pane	Rambah	Rokan Hulu	0° 59' 46,467" N	100° 15' 53,235" E	1.40	1.40	25.52	18.23	21.15	15.11	05/02/2022
111	L.Purba	Rambah	Rokan Hulu	0° 58' 27,464" N	100° 17' 34,544" E	0.70	0.70	12.81	18.30	21.15	30.21	05/02/2022
112	Karimah Panjaitan	Rambah	Rokan Hulu	1° 0' 3,234" N	100° 15' 54,586" E	1.20	1.20	23.10	19.25	33.50	27.92	05/02/2022
113	Jelita Br. Siburian	Rambah	Rokan Hulu	0° 58' 53,561" N	100° 16' 35,223" E	1.00	1.00	23.93	23.93	20.00	20.00	05/02/2022
114	Triposa Perjuangan Manik	Rambah	Rokan Hulu	0° 58' 36,998" N	100° 17' 34,428" E	1.60	1.60	33.58	20.99	20.00	12.50	05/02/2022
115	T. Br. Hombing	Rambah	Rokan Hulu	0° 58' 22,366" N	100° 17' 34,553" E	0.70	0.70	14.78	21.12	41.19	58.84	05/02/2022

116	Rida Br. Siboro	Rambah	Rokan Hulu	0° 58' 29,881" N	100° 17' 7,988" E	0.70	0.70	14.80	21.14	20.00	28.57	05/02/2022	
117	Antong Hutabarat	Rambah	Rokan Hulu	1° 1' 16,245" N	100° 15' 4,913" E	2.20	2.20	42.73	19.42	41.19	18.72	05/02/2022	
118	A.Sirait	Rambah	Rokan Hulu	0° 58' 34,840" N	100° 17' 6,609" E	0.70	0.70	14.17	20.24	21.15	30.21	05/02/2022	
119	Eksaudi Hutapea	Rambah	Rokan Hulu	0° 59' 16,734" N	100° 16' 44,750" E	2.00	2.00	38.60	19.30	43.60	21.80	05/02/2022	
120	Fernandus Manik A	Rambah	Rokan Hulu	0° 57' 30,682" N	100° 16' 24,623" E	3.07	3.07	69.11	22.51	70.80	23.06	05/02/2022	
	Fernandus Manik B	Rambah	Rokan Hulu	0° 58' 24,588" N	100° 15' 15,344" E	2.13	2.13	41.37	19.42	33.50	15.73	05/02/2022	
121	Parulian Manik A	Rambah	Rokan Hulu	1° 1' 1,871" N	100° 15' 37,091" E	2.08	2.08	40.94	19.68	41.19	19.80	05/02/2022	
	Parulian Manik B	Rambah	Rokan Hulu	1° 0' 7,764" N	100° 15' 46,775" E	1.71	1.71	34.12	19.94	33.50	19.58	05/02/2022	
122	Jonson Pane	Rambah	Rokan Hulu	0° 59' 52,676" N	100° 15' 51,843" E	2.10	2.10	44.08	20.99	41.19	19.61	05/02/2022	
123	Saritua Manik A	Rambah	Rokan Hulu	1° 1' 52,314" N	100° 15' 21,793" E	1.54	1.54	33.93	22.03	21.15	13.73	05/02/2022	
	Saritua Manik B	Rambah	Rokan Hulu	1° 1' 34,407" N	100° 15' 51,279" E	0.94	0.94	18.74	19.93	20.00	21.28	05/02/2022	
124	Dermawan Hutauruk	Rambah	Rokan Hulu	0° 59' 47,404" N	100° 16' 10,605" E	1.00	1.00	24.14	24.14	20.00	20.00	05/02/2022	
125	Maringan Panggabean	Rambah	Rokan Hulu	0° 59' 25,972" N	100° 16' 57,775" E	0.80	0.80	16.74	20.93	21.15	26.44	05/02/2022	
126	Evelin Alvionita Sianturi A	Rambah	Rokan Hulu	0° 59' 19,727" N	100° 17' 33,883" E	0.88	0.88	16.41	18.65	20.00	22.73	05/02/2022	
	Evelin Alvionita Sianturi B	Rambah	Rokan Hulu	0° 59' 15,679" N	100° 17' 36,309" E	1.10	1.10	19.97	18.15	21.15	19.23	05/02/2022	
	Evelin Alvionita Sianturi C	Rambah	Rokan Hulu	0° 59' 26,210" N	100° 16' 55,912" E	0.72	0.72	14.45	20.07	21.15	29.38	05/02/2022	
127	Barjojo Hutabarat	Rambah	Rokan Hulu	0° 58' 45,371" N	100° 17' 8,350" E	1.00	1.00	23.85	23.85	21.15	21.15	05/02/2022	
128	Mangihut Martin Tamba A	Rambah	Rokan Hulu	0° 59' 10,318" N	100° 15' 44,569" E	2.84	2.84	65.05	22.91	41.19	14.50	05/02/2022	
	Mangihut Martin Tamba B	Rambah	Rokan Hulu	0° 58' 49,394" N	100° 17' 15,177" E	4.10	4.10	99.30	24.22	73.60	17.95	05/02/2022	
129	Erna Wati Siregar	Rambah	Rokan Hulu	1° 0' 10,676" N	100° 15' 46,262" E	1.90	1.90	36.43	19.17	20.00	10.53	05/02/2022	
130	Thomson Manurung	Rambah	Rokan Hulu	0° 58' 3,724" N	100° 18' 13,829" E	1.00	1.00	23.05	23.05	21.15	21.15	05/02/2022	
131	Tiurma Br. Simbolon	Rambah	Rokan Hulu	0° 58' 11,972" N	100° 18' 4,763" E	0.80	0.80	17.63	22.03	21.15	26.44	05/02/2022	
132	Jannus Marpaung	Rambah	Rokan Hulu	0° 58' 27,350" N	100° 17' 45,220" E	1.60	1.60	35.34	22.09	41.19	25.74	05/02/2022	
133	Lasak Sitorus	Rambah	Rokan Hulu	0° 58' 51,740" N	100° 17' 11,257" E	3.00	3.00	70.66	23.55	70.80	23.60	05/02/2022	
134	Dorripa Tamar Ulina Br.Simanullang	Rambah	Rokan Hulu	1° 1' 47,764" N	100° 16' 28,341" E	2.20	2.20	42.70	19.41	41.19	18.72	05/02/2022	
135	Sarima Risma BR Sihombing	Rambah	Rokan Hulu	0° 58' 24,064" N	100° 17' 40,597" E	0.80	0.80	16.35	20.44	20.00	25.00	05/02/2022	
136	Edward Bonar Miduk Telaumbanua	Rambah	Rokan Hulu	0° 58' 20,386" N	100° 17' 45,734" E	0.75	0.75	15.68	20.90	21.15	28.20	05/02/2022	
137	Michael Anwar Miduk Telaumbanua	Rambah	Rokan Hulu	0° 58' 23,245" N	100° 17' 44,434" E	0.75	0.75	14.31	19.07	21.15	28.20	05/02/2022	
138	Firman Silalahi	Rambah	Rokan Hulu	0° 58' 59,360" N	100° 18' 6,093" E	2.50	2.50	59.70	23.88	41.19	16.48	05/02/2022	

139	Nursinta Hutagalung	Rambah	Rokan Hulu	0° 59' 2,111" N	100° 18' 10,502" E	2.25	2.25	41.43	18.41	41.19	18.31	05/02/2022	
140	Juli Budiarto Hutapea	Rambah	Rokan Hulu	0° 59' 47,010" N	100° 16' 8,830" E	1.19	1.19	19.80	16.64	21.15	17.77	05/02/2022	
141	Nemsi Novalyza Simbolon	Rambah	Rokan Hulu	1° 0' 5,686" N	100° 17' 39,600" E	3.00	3.00	70.81	23.60	70.80	23.60	05/02/2022	
142	Poltak Simanjuntak	Rambah	Rokan Hulu	0° 58' 35,059" N	100° 17' 2,332" E	5.50	5.50	138.10	25.11	73.60	13.38	05/02/2022	
143	Ezy Yosafat Lumbantoruan	Rambah	Rokan Hulu	0° 59' 25,237" N	100° 16' 43,174" E	1.42	1.42	29.93	21.08	41.19	29.01	05/02/2022	
144	Parlindungan Lumbang Gaol	Rambah	Rokan Hulu	1° 2' 29,465" N	100° 15' 23,510" E	1.61	1.61	36.00	22.36	41.19	25.58	05/02/2022	
145	Amril Lumban Gaol	Tambusai Barat	Rokan Hulu	1° 2' 10,468" N	100° 9' 4,780" E	1.54	1.54	27.46	17.84	41.19	26.76	01/03/2020	
146	Anwar Siringo ringo	Tambusai Barat	Rokan Hulu	1° 2' 31,382" N	100° 8' 56,501" E	2.00	2.00	35.46	17.73	41.19	20.60	01/03/2020	
147	Rencus Pandiangan A	Tambusai Barat	Rokan Hulu	1° 1' 57,513" N	100° 8' 25,847" E	2.80	2.80	60.09	21.46	41.19	14.71	01/03/2020	
	Rencus Pandiangan B	Tambusai Barat	Rokan Hulu	1° 2' 12,073" N	100° 9' 32,496" E	2.00	2.00	33.96	16.98	21.15	10.58	01/03/2020	
	Rencus Pandiangan C	Tambusai Barat	Rokan Hulu	1° 2' 10,586" N	100° 9' 36,635" E	2.00	2.00	34.60	17.30	41.19	20.60	01/03/2020	
	Rencus Pandiangan D	Tambusai Barat	Rokan Hulu	1° 2' 16,049" N	100° 9' 31,221" E	2.00	2.00	35.53	17.77	41.19	20.60	01/03/2020	
148	Harlen Siregar A	Tambusai Barat	Rokan Hulu	1° 2' 0,700" N	100° 8' 33,043" E	1.00	1.00	21.13	21.13	21.15	21.15	01/03/2020	
	Harlen Siregar B	Tambusai Barat	Rokan Hulu	1° 2' 5,815" N	100° 8' 23,557" E	6.00	6.00	124.36	20.73	108.82	18.14	01/03/2020	
	Harlen Siregar C	Tambusai Barat	Rokan Hulu	1° 2' 6,861" N	100° 8' 29,647" E	4.00	4.00	82.94	20.74	61.16	15.29	01/03/2020	
149	Ospada Sinaga A	Tambusai Barat	Rokan Hulu	1° 1' 52,546" N	100° 9' 12,113" E	2.00	2.00	35.31	17.66	41.19	20.60	01/03/2020	
	Ospada Sinaga B	Tambusai Barat	Rokan Hulu	1° 2' 5,553" N	100° 9' 30,959" E	5.00	5.00	103.82	20.76	70.80	14.16	01/03/2020	
	Ospada Sinaga C	Tambusai Barat	Rokan Hulu	1° 2' 2,567" N	100° 9' 14,421" E	2.60	2.60	55.50	21.34	41.19	15.84	01/03/2020	
	Ospada Sinaga D	Tambusai Barat	Rokan Hulu	1° 2' 3,656" N	100° 9' 17,305" E	2.90	2.90	59.74	20.60	61.00	21.03	01/03/2020	
	Ospada Sinaga E	Tambusai Barat	Rokan Hulu	1° 2' 7,646" N	100° 9' 18,657" E	3.70	3.70	76.53	20.68	70.80	19.14	01/03/2020	
150	Halomoan Sinaga	Tambusai Barat	Rokan Hulu	1° 1' 53,150" N	100° 8' 22,283" E	3.00	3.00	61.23	20.41	70.80	23.60	01/03/2020	
151	Amir Siburian	Tambusai Barat	Rokan Hulu	1° 2' 7,965" N	100° 8' 46,722" E	2.50	2.50	49.07	19.63	41.19	16.48	01/03/2020	
152	Nopa Linawati Tampilbolon	Tambusai Barat	Rokan Hulu	1° 2' 6,339" N	100° 9' 23,411" E	1.90	1.90	35.53	18.70	41.19	21.68	01/03/2020	
153	Dumasi Juliana Sihotang	Tambusai Barat	Rokan Hulu	1° 2' 6,171" N	100° 8' 39,165" E	4.00	4.00	81.64	20.41	73.60	18.40	01/03/2020	
154	Balutan Tua Siregar A	Tambusai Barat	Rokan Hulu	1° 4' 14,089" N	100° 8' 20,800" E	1.90	1.90	35.53	18.70	41.19	21.68	01/03/2020	
	Balutan Tua Siregar B	Tambusai Barat	Rokan Hulu	1° 4' 20,433" N	100° 8' 19,218" E	2.80	2.80	58.66	20.95	41.19	14.71	01/03/2020	
	Balutan Tua Siregar C	Tambusai Barat	Rokan Hulu	1° 4' 17,044" N	100° 8' 20,110" E	1.90	1.90	35.62	18.75	33.50	17.63	01/03/2020	
155	Batara Salomo	Tambusai Barat	Rokan Hulu	1° 3' 20,681" N	100° 9' 6,174" E	2.00	2.00	33.77	16.88	41.19	20.60	01/03/2020	
156	Parlindungan Manurung	Tambusai Barat	Rokan Hulu	1° 1' 47,563" N	100° 8' 19,745" E	2.00	2.00	34.59	17.29	41.19	20.60	01/03/2020	
157	Mangapul Raja Guk Guk	Tambusai Barat	Rokan Hulu	1° 2' 8,062" N	100° 9' 2,224" E	1.50	1.50	28.61	19.07	41.19	27.46	01/03/2020	
158	Panti Br Sianturi	Tambusai Barat	Rokan Hulu	1° 2' 6,941" N	100° 8' 33,434" E	2.00	2.00	34.04	17.02	41.19	20.60	01/03/2020	

159	Tiarma Br Manulang A	Tambusai Barat	Rokan Hulu	1° 2' 25,460" N	100° 8' 56,255" E	2.10	2.10	37.41	17.81	41.19	19.61	01/03/2020	
	Tiarma Br Manulang B	Tambusai Barat	Rokan Hulu	1° 2' 6,406" N	100° 9' 0,283" E	1.90	1.90	36.20	19.05	33.50	17.63	01/03/2020	
	Tiarma Br Manulang C	Tambusai Barat	Rokan Hulu	1° 2' 25,022" N	100° 9' 0,611" E	2.40	2.40	45.17	18.82	41.19	17.16	01/03/2020	
160	Mariasi Limbong A	Tambusai Barat	Rokan Hulu	1° 1' 55,378" N	100° 8' 56,540" E	2.00	2.00	36.77	18.38	33.50	16.75	01/03/2020	
	Mariasi Limbong B	Tambusai Barat	Rokan Hulu	1° 1' 52,196" N	100° 8' 54,672" E	1.60	1.60	29.29	18.31	41.19	25.74	01/03/2020	
161	Koter Siregar	Tambusai Barat	Rokan Hulu	1° 2' 5,757" N	100° 9' 38,094" E	2.00	2.00	36.82	18.41	33.50	16.75	01/03/2020	
162	Antonius Sinaga A	Tambusai Barat	Rokan Hulu	1° 2' 28,658" N	100° 9' 5,377" E	1.70	1.70	31.08	18.28	21.15	12.44	01/03/2020	
	Antonius Sinaga B	Tambusai Barat	Rokan Hulu	1° 2' 23,575" N	100° 9' 6,494" E	2.00	2.00	36.21	18.11	41.19	20.60	01/03/2020	
163	Marjunus Hutabarat	Tambusai Barat	Rokan Hulu	1° 2' 4,244" N	100° 9' 9,530" E	1.80	1.80	33.73	18.74	41.19	22.88	01/03/2020	
164	Japantur Sirait	Tambusai Barat	Rokan Hulu	1° 2' 15,159" N	100° 9' 26,046" E	1.40	1.40	26.40	18.86	21.15	15.11	01/03/2020	
165	Sahat Manalu	Tambusai Barat	Rokan Hulu	1° 2' 19,998" N	100° 9' 21,695" E	6.50	6.50	138.49	21.31	108.82	16.74	01/03/2020	
166	Togi Siagian	Tambusai Barat	Rokan Hulu	1° 2' 44,403" N	100° 8' 29,353" E	2.00	2.00	36.87	18.43	41.19	20.60	01/03/2020	
167	Wisnar Hutajulu A	Tambusai Barat	Rokan Hulu	1° 1' 59,708" N	100° 9' 12,310" E	2.00	2.00	37.05	18.52	41.19	20.60	01/03/2020	
	Wisnar Hutajulu B	Tambusai Barat	Rokan Hulu	1° 1' 57,165" N	100° 9' 17,908" E	2.10	2.10	39.00	18.57	41.19	19.61	01/03/2020	
	Wisnar Hutajulu C	Tambusai Barat	Rokan Hulu	1° 1' 56,143" N	100° 9' 11,656" E	2.00	2.00	40.54	20.27	41.19	20.60	01/03/2020	
168	Mangihut Sibarani A	Tambusai Barat	Rokan Hulu	1° 1' 53,542" N	100° 9' 2,421" E	5.10	5.10	103.49	20.29	73.60	14.43	01/03/2020	
	Mangihut Sibarani B	Tambusai Barat	Rokan Hulu	1° 1' 56,193" N	100° 8' 38,381" E	1.90	1.90	36.40	19.16	41.19	21.68	01/03/2020	
	Mangihut Sibarani C	Tambusai Barat	Rokan Hulu	1° 2' 0,133" N	100° 8' 37,021" E	1.90	1.90	34.62	18.22	41.19	21.68	01/03/2020	
	Mangihut Sibarani D	Tambusai Barat	Rokan Hulu	1° 1' 57,784" N	100° 8' 47,978" E	1.90	1.90	36.33	19.12	41.19	21.68	01/03/2020	
	Mangihut Sibarani E	Tambusai Barat	Rokan Hulu	1° 1' 59,328" N	100° 8' 41,498" E	1.90	1.90	35.37	18.61	41.19	21.68	01/03/2020	
	Mangihut Sibarani F	Tambusai Barat	Rokan Hulu	1° 1' 59,206" N	100° 8' 44,600" E	2.00	2.00	37.66	18.83	41.19	20.60	01/03/2020	
169	Yuda Mulia Panjaitan	Tambusai Barat	Rokan Hulu	1° 2' 40,887" N	100° 8' 38,261" E	3.40	3.40	66.54	19.57	70.80	20.82	01/03/2020	
170	Edwin Gultom	Tambusai Barat	Rokan Hulu	1° 2' 8,534" N	100° 11' 22,766" E	2.00	2.00	39.41	19.70	60.80	30.40	01/03/2020	
171	Doharman Sirait A	Tambusai Barat	Rokan Hulu	1° 2' 26,902" N	100° 9' 24,607" E	2.00	2.00	38.53	19.26	43.60	21.80	01/03/2020	
	Doharman Sirait B	Tambusai Barat	Rokan Hulu	1° 2' 18,948" N	100° 9' 6,312" E	2.20	2.20	39.94	18.16	41.19	18.72	01/03/2020	
	Doharman Sirait C	Tambusai Barat	Rokan Hulu	1° 1' 59,556" N	100° 9' 6,543" E	2.60	2.60	51.32	19.74	41.19	15.84	01/03/2020	
172	Jhon Kamal Marpaung	Tambusai Barat	Rokan Hulu	1° 2' 11,908" N	100° 9' 20,471" E	2.30	2.30	42.60	18.52	41.19	17.91	01/03/2020	
173	Mardoli Pasaribu A	Tambusai Barat	Rokan Hulu	1° 1' 51,720" N	100° 11' 15,547" E	9.30	9.30	206.38	22.19	176.60	18.99	01/03/2020	
	Mardoli Pasaribu B	Tambusai Barat	Rokan Hulu	1° 1' 55,269" N	100° 11' 22,563" E	5.25	5.25	112.99	21.52	70.80	13.49	01/03/2020	
174	Boster Sinaga A	Tambusai Barat	Rokan Hulu	1° 3' 2,197" N	100° 8' 37,628" E	3.96	3.96	79.70	20.13	70.80	17.88	01/03/2020	
	Boster Sinaga B	Tambusai Barat	Rokan Hulu	1° 2' 13,299" N	100° 8' 49,158" E	1.84	1.84	33.94	18.44	41.19	22.39	01/03/2020	

175	Berdaulat Manurung A	Tambusai Barat	Rokan Hulu	1° 1' 52,003" N	100° 8' 33,196" E	4.10	4.10	87.72	21.39	60.85	14.84	01/03/2020
	Berdaulat Manurung B	Tambusai Barat	Rokan Hulu	1° 1' 52,093" N	100° 8' 41,657" E	5.00	5.00	108.93	21.79	73.60	14.72	01/03/2020
176	Sehat Sinaga	Tambusai Barat	Rokan Hulu	1° 2' 30,580" N	100° 9' 8,289" E	4.80	4.80	102.14	21.28	70.80	14.75	01/03/2020
177	Jonson manik	Tambusai Barat	Rokan Hulu	1° 3' 16,992" N	100° 8' 53,272" E	2.94	2.94	69.56	23.66	43.60	14.83	05/02/2022
178	Untung Hutabarat	Tambusai Barat	Rokan Hulu	1° 3' 14,595" N	100° 8' 49,880" E	2.20	2.20	49.51	22.51	33.50	15.23	05/02/2022
179	Andreas Tarigan	Tambusai Barat	Rokan Hulu	1° 3' 51,348" N	100° 8' 38,603" E	3.38	3.38	78.23	23.14	70.80	20.95	05/02/2022
180	Ronal Simbolon	Tambusai Barat	Rokan Hulu	1° 3' 10,733" N	100° 9' 12,826" E	2.33	2.33	48.46	20.80	33.50	14.38	05/02/2022
181	Lanni	Tambusai Barat	Rokan Hulu	1° 2' 29,860" N	100° 9' 21,646" E	1.55	1.55	32.92	21.24	41.19	26.57	05/02/2022
182	Jonson Harahap	Tambusai Barat	Rokan Hulu	1° 2' 28,543" N	100° 9' 16,625" E	1.37	1.37	30.72	22.43	21.15	15.44	05/02/2022
183	Mian Br Marbun	Tambusai Barat	Rokan Hulu	1° 2' 27,998" N	100° 9' 9,544" E	1.60	1.60	36.93	23.08	43.60	27.25	05/02/2022
184	Herdwin Panel Tamba	Tambusai Barat	Rokan Hulu	1° 2' 7,559" N	100° 8' 53,455" E	7.90	7.90	204.28	25.86	136.70	17.30	05/02/2022
185	Dodi Antonius Sinurat	Tambusai Barat	Rokan Hulu	1° 2' 7,247" N	100° 9' 26,429" E	1.90	1.90	43.07	22.67	20.00	10.53	05/02/2022
186	Pardamean Pasaribu	Tambusai Barat	Rokan Hulu	1° 2' 6,990" N	100° 8' 34,505" E	2.20	2.20	46.06	20.94	41.19	18.72	05/02/2022
187	Ropia	Tambusai Barat	Rokan Hulu	1° 3' 29,765" N	100° 11' 7,597" E	0.60	0.60	11.50	19.16	21.15	35.25	05/02/2022
188	Muktiari	Tambusai Barat	Rokan Hulu	1° 3' 16,614" N	100° 11' 2,600" E	0.80	0.80	15.70	19.62	21.15	26.44	05/02/2022
189	Nuralam Sitinjak	Tambusai Barat	Rokan Hulu	1° 3' 20,445" N	100° 8' 49,714" E	2.00	2.00	42.91	21.46	33.50	16.75	05/02/2022
190	Hotmauli Pakpahan A	Tambusai Barat	Rokan Hulu	1° 3' 36,680" N	100° 8' 50,600" E	1.60	1.60	38.21	23.88	21.15	13.22	05/02/2022
	Hotmauli Pakpahan B	Tambusai Barat	Rokan Hulu	1° 3' 27,107" N	100° 8' 51,580" E	1.70	1.70	39.33	23.14	43.60	25.65	05/02/2022
	Hotmauli Pakpahan C	Tambusai Barat	Rokan Hulu	1° 3' 17,794" N	100° 9' 0,098" E	1.50	1.50	34.08	22.72	41.19	27.46	05/02/2022
191	Rando Junior Nalang Surya Siahhaan	Tambusai Barat	Rokan Hulu	1° 3' 19,445" N	100° 8' 57,990" E	1.00	1.00	20.83	20.83	21.15	21.15	05/02/2022
192	Djalan Raja Guk-Guk	Tambusai Barat	Rokan Hulu	1° 2' 4,019" N	100° 8' 57,854" E	2.20	2.20	44.82	20.37	41.19	18.72	05/02/2022
193	Maria Masli Situmorang	Tambusai Barat	Rokan Hulu	1° 2' 3,504" N	100° 9' 16,556" E	4.31	4.31	101.43	23.53	73.60	17.08	05/02/2022
194	Saripuddin Zuhri	Tambusai Barat	Rokan Hulu	1° 4' 29,519" N	100° 10' 12,715" E	2.00	2.00	43.48	21.74	43.60	21.80	05/02/2022
195	Efendi Sirait	Tambusai Barat	Rokan Hulu	1° 1' 53,811" N	100° 9' 15,997" E	2.00	2.00	42.77	21.38	41.19	20.60	05/02/2022
196	Lanjut Ambarita	Tambusai Barat	Rokan Hulu	1° 2' 18,567" N	100° 9' 16,437" E	2.00	2.00	44.23	22.12	20.00	10.00	05/02/2022
197	Parulian Manalu	Tambusai Barat	Rokan Hulu	1° 3' 59,123" N	100° 10' 15,142" E	2.33	2.33	53.58	22.99	33.50	14.38	05/02/2022
198	Zulkifli	Tambusai Barat	Rokan Hulu	1° 2' 23,568" N	100° 9' 13,016" E	2.35	2.35	53.05	22.57	33.50	14.26	05/02/2022
199	Dippos Sagala	Tambusai Barat	Rokan Hulu	1° 3' 23,887" N	100° 9' 5,804" E	0.75	0.75	13.08	17.44	21.15	28.20	05/02/2022
200	Rosida Br Sagala	Sungai Kumango	Rokan Hulu	1° 1' 58,967" N	100° 11' 57,257" E	1.80	1.80	35.85	19.91	41.19	22.88	01/03/2020
201	Jhon Frengky Simanjuntak	Sungai Kumango	Rokan Hulu	1° 2' 3,599" N	100° 11' 23,516" E	1.50	1.50	28.39	18.93	21.15	14.10	01/03/2020
202	Sihol Tua Silaban	Sungai Kumango	Rokan Hulu	1° 2' 0,130" N	100° 11' 3,968" E	1.90	1.90	36.59	19.26	41.19	21.68	01/03/2020

203	Risma Purba	Sungai Kumango	Rokan Hulu	1° 1' 59,445" N	100° 11' 50,696" E	2.00	2.00	37.89	18.94	41.19	20.60	01/03/2020	
204	Elosonius Haloho	Sungai Kumango	Rokan Hulu	1° 2' 6,939" N	100° 11' 18,671" E	1.04	1.04	17.34	16.68	21.15	20.34	01/03/2020	
205	Rizal Pasaribu A	Sungai Kumango	Rokan Hulu	1° 2' 0,303" N	100° 11' 28,217" E	1.90	1.90	35.71	18.80	33.50	17.63	01/03/2020	
	Rizal Pasaribu B	Sungai Kumango	Rokan Hulu	1° 1' 54,801" N	100° 11' 29,255" E	1.90	1.90	34.47	18.14	33.50	17.63	01/03/2020	
206	Rusti Br Manalu	Sungai Kumango	Rokan Hulu	1° 1' 52,404" N	100° 11' 44,456" E	3.00	3.00	60.29	20.10	68.48	22.83	01/03/2020	
	TOTAL					610.64	610.64	12,218.59	20.01	11,780	19.29		

