

Roundtable on Sustainable Palm Oil Certification R S P O

[✓] Milestone-B

Name of Management Organisation : **Koperasi Pemasaran Ikatan Petani Sawit Swadaya (KOIPESS)**
 Plantation Name : **Koperasi Pemasaran Ikatan Petani Sawit Swadaya (KOIPESS)**
 Location : Village of Bulu Bonggu, Sub District of Dapurang, District of Pasangkayu, Province of Sulawesi Barat. Indonesia
 Certificate Code : **MUTU-RSPO/184**
 Date of Certificate Issue : 13 July 2023 Date of License Issue : 13 July 2023
 Date of Certificate Expiry : 12 July 2028 Date of License Expiry : 12 July 2024

Assessment	Assessment Date	PT. Mutuagung Lestari Auditor	Reviewed by	Approved by
MS-B	27 February – 1 March 2023	Haikal Ramadhan Kharismansyah, Arief Tajalli and Kiki Fadli	Harso Yuli Antena	Leonada

Assessment	Approved by MUTUAGUNG LESTARI on:
MS-B	13 July 2023

TABLE OF CONTENT
FIGURE

Figure 1. Location Map of Koperasi Pemasaran Ikatan Petani Sawit Swadaya (KOIPESS)	01
Figure 2. Operational Map of Koperasi Pemasaran Ikatan Petani Sawit Swadaya (KOIPESS)	02
Abbreviations Used	03

1.0 SCOPE of the CERTIFICATION ASSESSMENT

1.1 Assessment Standard Used	04
1.2 Organisation Information	04
1.3 Type of Assessment	04
1.4 Location of Plantations	04
1.5 Description of Area Statement	04
1.6 Planting Year and Cycles	05
1.7 Description of Supply Base	05
1.8 Tonnage Product	05
1.9 Other Certification	06

2.0 ASSESSMENT PROCESS

2.1 Assessment Team	07
2.2 Assessment Methodology, Assessment Process and Locations of Assessment	07
2.3 Stakeholder Consultation and Stakeholders Contacted	09
2.4 Determining Next Assessment	09

3.0 ASSESSMENT FINDINGS

3.1 Summary of Assessment Report of the RSPO Certification	10
3.2 Conformity Checklist of Certificate and Logo Use	36
3.3 Identification of Findings, Corrective Actions, Observations, Opportunity for Improvement and Noteworthy Positive Components	37
3.4 Summary of Arising Issues from Public and Auditor Verification	46

4.0 CERTIFIED ORGANISATION'S ACKNOWLEDGEMENT OF INTERNAL RESPONSIBILITY

4.1 Formal Signing of Assessment Findings	47
---	----

APPENDICES

1. List of Stakeholders Contacted in the RSPO Certification Process	48
2. Assessment Program	49
3. Smallholders Data	50

Figure 1. Location Map of Koperasi Pemasaran Ikatan Petani Sawit Swadaya (KOIPESS)

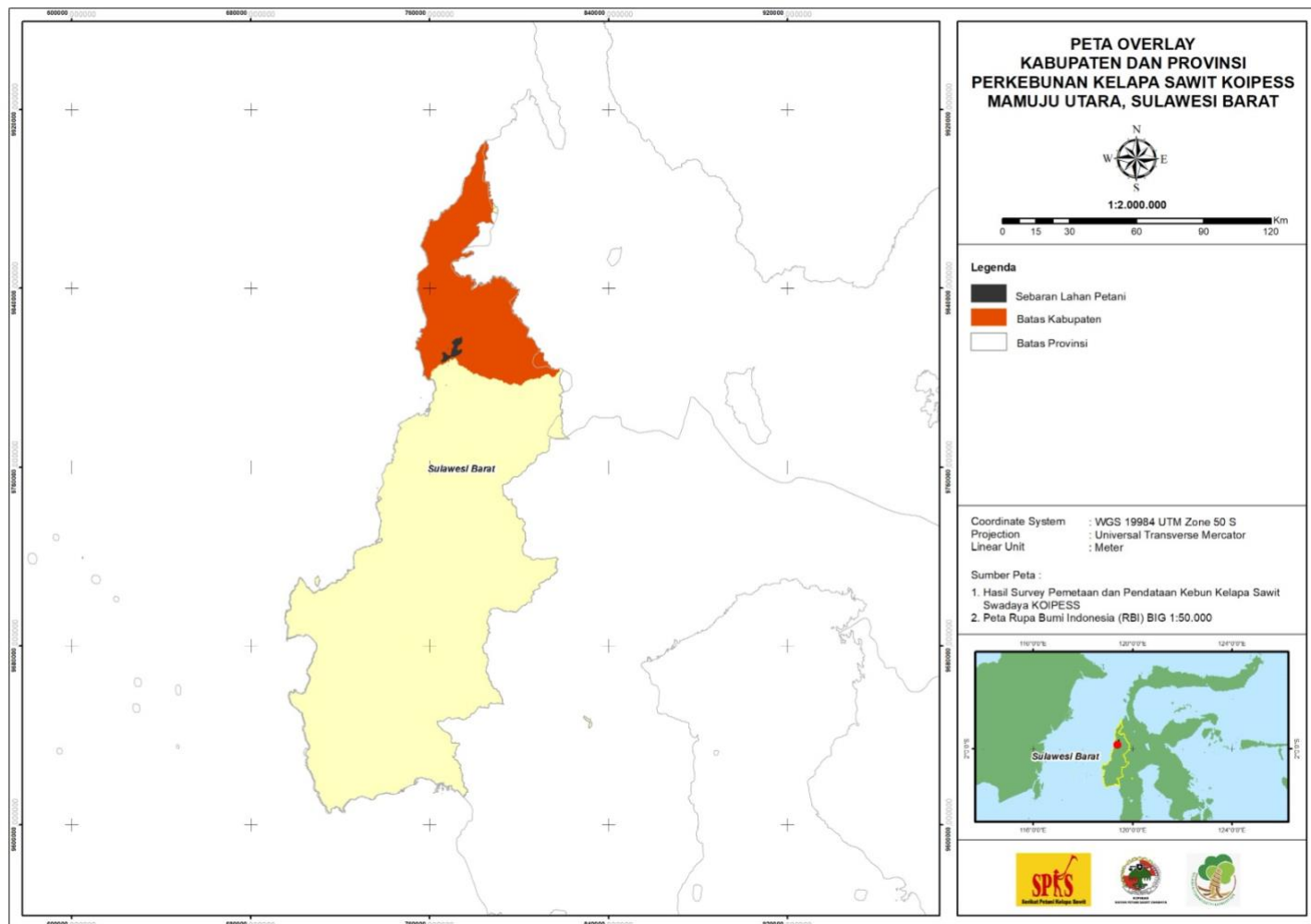
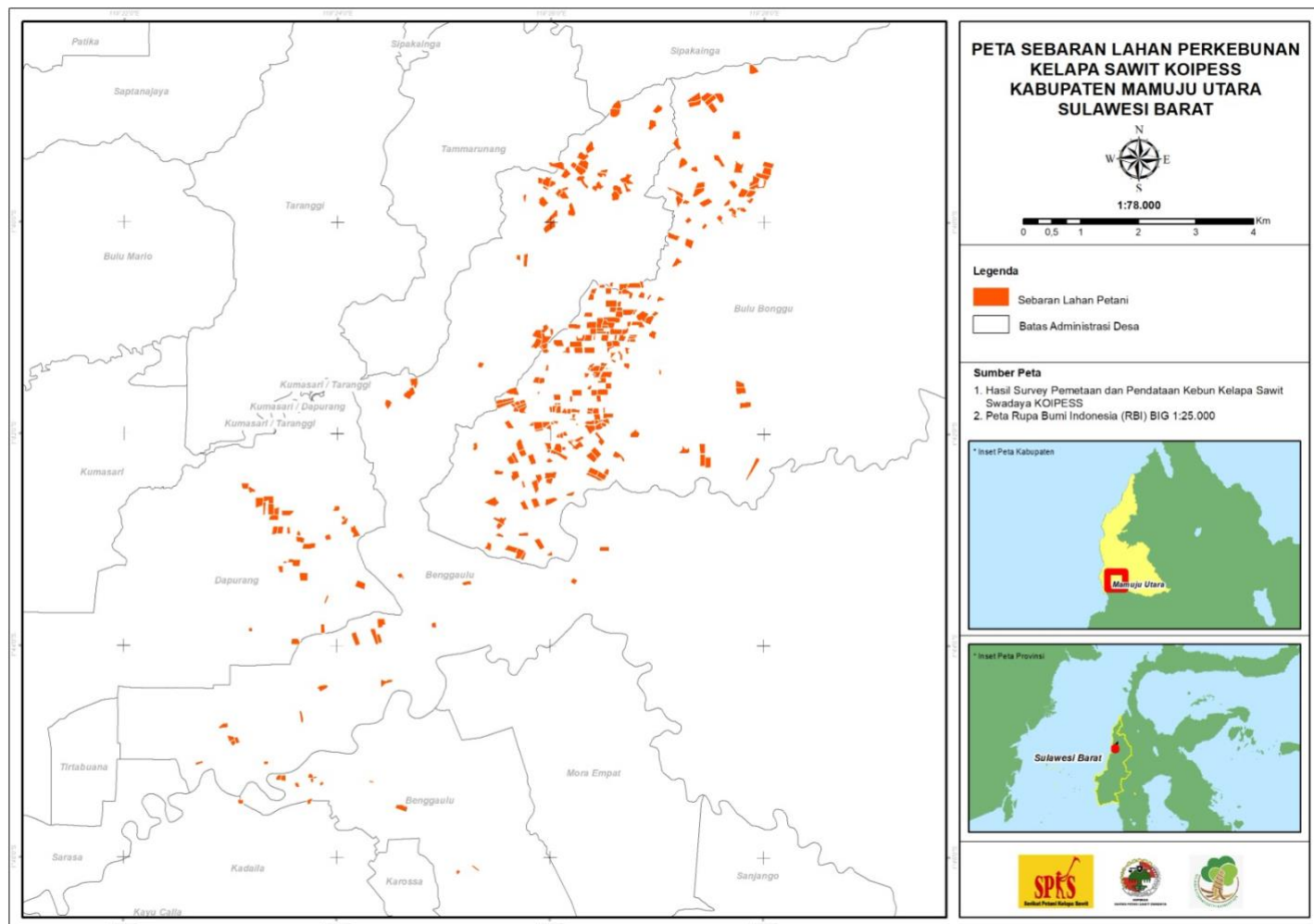


Figure 2. Operational Map of Koperasi Pemasaran Ikatan Petani Sawit Swadaya (KOIPESS)



Abbreviations Used

AD / ART	:	<i>Anggaran Dasar / Anggaran Rumah Tangga</i> (Memorandum of Association / Article of Association)
CPO	:	Crude Palm Oil
DLH	:	<i>Dinas Lingkungan Hidup</i> (Environmental Department)
DPLH	:	Environment Management Document
DPMPTSP	:	<i>Dinas Penanaman Modal dan Pelayanan Terpadu Satu Pintu</i>
EFB	:	Empty Fruit Bunch
FFB	:	Fresh Fruit Bunches
FPIC	:	Free Prior and Informed Consent
GHG	:	Green House Gases
HCV	:	High Conservation Value
HIRAC	:	Hazard Identification Risk Assessment and Risk Control
ICS	:	Internal Control System
KOIPES	:	<i>Koperasi Ikatan Petani Sawit Swadaya</i> (smallholder)
LUCA	:	Land Use Change Analysis
OER	:	Oil Extraction Rate
OFI	:	Opportunity of Improvement
OHS	:	Occupational Health and safety
PIC	:	Person in Charge
PK	:	Palm Kernel
PPE	:	Personal Protection Equipment
PSBL	:	<i>Perkumpulan Petani Swadaya Bangka Lestari</i>
RACP	:	Remediation and Compensation Plan
RSPO	:	<i>Roundtable on Sustainable Palm Oil</i>
RTE	:	Rare, Threatened or Endangered
SCCS	:	Supply Chain Certification Standard
SHM	:	<i>Sertifikat Hak Milik</i> (Freehold Title)
SKGR	:	<i>Surat Keterangan Ganti Rugi</i> (Land Compensation Certificate)
SKT	:	<i>Surat Kepemilikan Tanah</i> (Land Ownership Certificate)
SOP	:	Standard Operational and Procedure
SPKS	:	<i>Serikat Petani Kelapa Sawit</i>
SPPL	:	<i>Surat Pernyataan Pengelolaan Lingkungan</i> (Statement of Environment Management)
STDB	:	<i>Surat Tanda Daftar - Budidaya Perkebunan</i>
SPPHAT	:	<i>Surat Pelepasan Pengakuan Hak Atas Tanah</i>

1.0	SCOPE of the CERTIFICATION ASSESSMENT			
1.1	Assessment Standard Used	<ul style="list-style-type: none">RSPO Certification Systems for Principles & Criteria and RSPO Independent Smallholder Standard Endorsed by the RSPO Board of Governors on 12 November 2020RSPO Independent Smallholder Standard, Indonesia National Interpretation for the Production of Sustainable Palm Oil 2020, endorsed by the RSPO Board of Governors on 14 February 2022		
1.2	Organisation Information			
1.2.1	Organisation name listed in the certificate	Koperasi Pemasaran Ikatan Petani Sawit Swadaya (KOIPESS)		
1.2.2	Contact person	Novet Charles Akollo		
1.2.3	Organisation address and site address	Village of Bulu Bonggu, Sub District of Dapurang, District of Pasangkayu, Province of Sulawesi Barat. Indonesia		
1.2.4	Telephone	081233860176		
1.2.5	Fax	-		
1.2.6	E-mail	novetcharlesakollo@gmail.com		
1.2.7	Web page address	-		
1.2.8	Management Representative who completed the application for certification	Novet Charles Akollo		
1.2.9	Registered as RSPO member	1-0414-22-000-00, 24 September 2022		
1.3	Type of Assessment			
1.3.1	Scope of Assessment and Number of Management Unit	Koperasi Pemasaran Ikatan Petani Sawit Swadaya (KOIPESS) consist of 234 Smallholders with total of 412,03 Ha.		
1.3.2	Type of certificate	Single		
1.4	Locations of Plantation			
1.4.1	Location of Certification Scope of Supply Base			
	Name of Smallholder Organisation	Location	Coordinate	
			Latitude	Longitude
	Koperasi Pemasaran Ikatan Petani Sawit Swadaya	Village of Bulu Bonggu, Sub District of Dapurang, District of Pasangkayu, Province of Sulawesi Barat. Indonesia	S 1° 41' 47.34"	E 119° 26' 17.13"
1.5	Description of Area Statement			
1.5.1	Tenure			
	<ul style="list-style-type: none">State		- Ha	
	<ul style="list-style-type: none">Community		412.03 Ha	
1.5.2	Area Statement			
	<ul style="list-style-type: none">Total area		412.03 Ha	
	<ul style="list-style-type: none">Mature area		382.38 Ha	
	<ul style="list-style-type: none">Immature Area		29.65 Ha	

1.6	Planting Year and Cycles				
1.6.1	Age profile of planting year				
	Planting Year	Hectarage (Ha)			
		KOIPESS	Total		
	2002	1.06	1.06		
	2004	1.90	1.90		
	2005	1.18	1.18		
	2006	3.13	3.13		
	2007	12.01	12.01		
	2008	1.81	1.81		
	2009	19.18	19.18		
	2010	39.70	39.70		
	2011	42.18	42.18		
	2012	68.34	68.34		
	2013	37.49	37.49		
	2014	46.36	46.36		
	2015	55.55	55.55		
	2016	20.26	20.26		
	2017	26.53	26.53		
	2018	3.61	3.61		
	2019	2.09	2.09		
	Sub Total Mature		382.38	382.38	
2020	29.65	29.65			
Sub Total Immature		29.65	29.65		
TOTAL		412.03	412.03		
1.6.2	New Planting area after January 2010	350.36 Ha			
1.6.3	Planting Cycle	2 nd Cycle			
	*Year of plantings 2019 and 2020 are not new plantations but replanting, replanting is carried out with the aim of replacing seeds and not because of the planting period.				
1.7	Description of Supply Base				
1.7.1	Description of Certification Scope of Supply Base				
	Name of Smallholder Organisation	Total Area (Ha)	Production Area (Ha)	FFB (tonnes/year)	Yield (tonnes/ha/year)
	KOIPESS	412.03	382.38	6,187.39	16.18
	*Data period from January - December 2022				
1.8	Tonnage of Product				
1.8.1	Past Annual Claim Certified Product		Last Year Projected Certified Volume (MT)		Last Year Actual Certified Volume (MT)
	• FFB Production		-		-
	• CSPO Production		-		-
	• CSPKE Production		-		-
	• CSPKO Production		-		-
	*Will be verified at ASA-1				
1.8.2	Product selling				
	Tonnage of selling product		Actual selling product for last year		
	• IS-CSPO sold as RSPO Credit		-		
	• IS-CSPK sold as RSPO Credit		-		

	<ul style="list-style-type: none">• IS-CSPKE sold as RSPO Credit• FFB sold as RSPO Certified Product• FFB sold under another scheme• FFB sold as conventional	-																				
1.8.3	Estimate Certified FFB Claim																					
	<table><tr><th>Name of Smallholder Organisation</th><th>Total Area (Ha)</th><th>Production Area (Ha)</th><th>FFB (tonnes/year)</th><th>Yield (tonnes/ha/year)</th></tr><tr><td>KOIPES</td><td>412.03</td><td>382.38</td><td>6,500</td><td>17.00</td></tr></table>	Name of Smallholder Organisation	Total Area (Ha)	Production Area (Ha)	FFB (tonnes/year)	Yield (tonnes/ha/year)	KOIPES	412.03	382.38	6,500	17.00											
Name of Smallholder Organisation	Total Area (Ha)	Production Area (Ha)	FFB (tonnes/year)	Yield (tonnes/ha/year)																		
KOIPES	412.03	382.38	6,500	17.00																		
	*Data period from January - December 2022																					
1.8.4	Estimate Certified Palm Product Claim																					
	<table><tr><th rowspan="2">FFB Processed (tonnes/year)</th><th colspan="2">CSPO</th><th colspan="2">CSPKE</th><th colspan="2">CSPKO</th></tr><tr><th>Out put (tonnes)</th><th>Extraction (%)</th><th>Out put (tonnes)</th><th>Extraction (%)</th><th>Out put (tonnes)</th><th>Extraction (%)</th></tr><tr><td>6.496,61</td><td>-</td><td>-</td><td>-</td><td>-</td><td>-</td><td>-</td></tr></table>	FFB Processed (tonnes/year)	CSPO		CSPKE		CSPKO		Out put (tonnes)	Extraction (%)	Out put (tonnes)	Extraction (%)	Out put (tonnes)	Extraction (%)	6.496,61	-	-	-	-	-	-	
FFB Processed (tonnes/year)	CSPO		CSPKE		CSPKO																	
	Out put (tonnes)	Extraction (%)	Out put (tonnes)	Extraction (%)	Out put (tonnes)	Extraction (%)																
6.496,61	-	-	-	-	-	-																
	*Extraction of CSPO, CSPKO and CSPKE from document “A seller Guide to RSPO Credits **Projected CSPO, CSPKO & CSPKE production for 12 months of certificate																					
1.9	Other Certifications																					
	Others	-																				

2.0	ASSESSMENT PROCESS
2.1	Assessment Team
MS-B	<p>1. Haikal Ramadhan Kharismansyah (Lead Auditor). Indonesian citizen, Bachelor of Agriculture department of plant and pest disease (Agrotechnology). He has 3 years' experience as an Agronomy Staff in private oil palm plantation in Indonesia. Training which had attended including Basic Management Development Program Agronomy, Integrated Urban Pest Management, Integrated Pest Management, ISO 9001:2015, Auditor ISPO, RSPO Lead Auditor Training, ISO 22000 awareness, RSPO SCCS, and ISH Lead auditor training conducted by RSPO. Did some audit ISPO scheme with aspects best management practices. During this audit, he assigned to verify legal aspect, land dispute, ICS, and supply chain.</p> <p>2. Arief Tajalli (Auditor). Indonesian citizen, Bachelor of Forest Resources Conservation and Ecotourism, Faculty of Forestry, Bogor Agricultural University. Has been involved as a researcher at a wildlife laboratory, Faculty of Forestry, IPB. The trainings that have been attended include training for ISO 9001; 2008, ISO 14001; 2004, ISO 17021; 2015, ISO 17065, ISO 19011, ISPO Auditor training, RSPO Auditor training, and participating in several IHT in the field of environment, BMP, and so on. Has participated in several audit simulation activities related to the sustainable palm oil certification system since 2020 with social, environmental, GHG, waste management aspect and ISH Lead auditor training conducted by RSPO. During this assessment, he assigned to verification towards Environment and OHS.</p> <p>3. Kiki Fadli (Auditor). Indonesian citizen. Bachelor of Agricultural Engineering, Agricultural Engineering Study Program. Has experience working in the sustainability department in private and state-owned oil palm plantations. Has attended training on New Refreshment Lead Auditor ISPO, Lead Auditor RSPO, General OHS Expert, ISO 9001:2008, ISO 14001:2015, ISO 17021, ISO 17065, HCV, SMK3 and ISH Lead auditor training conducted by RSPO. During this assessment, he verified the worker welfare and BMP aspect.</p> <p>Curriculum vitae (CV) of the members and the assessment team is available at the PT Mutuagung Lestari office.</p>
2.2	Assessment Methodology, Assessment Process and Locations of Assessment
2.2.1	Figure of person days to implement assessment
MS-B	<p>Number of auditors: 3 auditors</p> <p>Number of days for MS-B at site: 3 days</p> <p>Number of working days for MS-B at site: 9 Working days</p>
2.2.2	Assessment Process
MS-B	<p>The assessment was conducted by measuring the sufficiency of implementation with the consistency done by the Koperasi Pemasaran Ikatan Petani Sawit Swadaya (KOIPESS) to the requirements of RSPO Independent Smallholder Standard, Indonesia National Interpretation for the Production of Sustainable Palm Oil 2020, endorsed by the RSPO Board of Governors on 14 February 2022 and RSPO Certification Systems for Principles & Criteria and RSPO Independent Smallholder Standard Endorsed by the RSPO Board of Governors on 12 November 2020.</p> <p>This assessment conducted for previous scope at Eligibility assessment of 234 smallholders (319 land plots) with 412,03 Ha. The assessment was conducted in three methods: (1) document review, aiming to observe the sufficiency of types or substances from required documents; (2) <i>interview</i>, aiming to obtain more detailed information and cross check the information; and (3) field observation, aiming to observe directly the sufficiency of implementation on site.</p> <p>Some opportunities for improvement of the results MS-B delivered by the MUTU auditor to the management unit and the results are the subject will be verified at the next assessment phase (ASA-1).</p> <p>Improvement of findings from main assessment findings were observed by auditors at this MS-B assessment. All information obtained was recorded in Check List of PT Mutuagung Lestari (MUTU) and part of MS-B.</p> <p>Team of auditor started their trip from Jakarta to Smallholder office and continued to site. Opening Meeting in the Meeting Room of Smallholder Office. Opening meeting was attended by head of organization, ICS and other related personnel.</p>

Public Stakeholder Notification was made on 20 January 2022. There is no written negative feedback received. Stakeholder consultation involved external stakeholders.

Meetings were held with stakeholders to seek their views on the performance of the company with respect to the RSPO requirements and aspects where they considered that improvements could be made. At the start of each meeting, the interviewer explained the purpose of the audit followed by an evaluation of the relationship between the stakeholder and the company before discussions proceeded. The interviewer recorded comments made by stakeholders and these have been incorporated into the assessment findings. The comments made by external stakeholders were also taken into account in the assessment.

Structured worker and members interview with male and female workers were held in private at the workplace. Fieldworkers were interviewed informally in small groups in the field. In addition, the wives of workers and staff were interviewed in informal meetings at their housing. Company officials were not present at any of the internal or external stakeholder interviews. A list of Stakeholders contacted is included as Appendix 1.

The assessment program please find Appendix 2

2.2.3 Locations of Assessment

MS-B This assessment was conducted with scope of certification 412.03 Ha, 234 members and 319 land Plots. The location of assessment was divided on 2 village. During this assessment the association considered medium risk, its due to there is considerable heterogeneity in the Group (e.g., members are geographically or jurisdictionally separated from one another, a range of terrains, varying levels of experience of oil palm cultivation among members, diverse sizes of plantations, a range of socio economic situations among members, etc.). Sampling method for MS-B: $\sqrt{234} \times (1.2) = 18.35$ members. During this assessment, auditor use 20 sample.

The sampling location consider the issue arose from the review documents, village distribution and stakeholder's consultation that are fundamental and crucial. The smallholders and locations visited by auditor among other:

No	Name	ID	Farmers Group	Purpose
Bulu Bonggu Village				
1	Muhlis Luddin	KOIPES-01-A-012	KT Auliah	Field Observation and interview related to best practices, legality, environmental, worker welfare, and boundaries marking.
2	Jahar	KOIPES-01-A-013	KT Auliah	
3	Baharuddin	KOIPES-01-A-035	KT Auliah	
4	Ali. K	KOIPES-02-A-038	KT Bunga Lestari	
5	Herman	KOIPES-02-A-044	KT Bunga Lestari	
6	Hasbia	KOIPES-02-A-048	KT Bunga Lestari	
7	Basten	KOIPES-02-A-069	KT Bunga Lestari	
8	Jasman A	KOIPES-02-A-067	KT Bunga Lestari	
9	Syamsul	KOIPES-04-A-133	KT Bambu Runcing	
10	Ali. L	KOIPES-04-A-143	KT Bambu Runcing	
11	Hazardous storage	-	-	Field Observation and interview related to hazardous waste handling
Benggaulu Village				
1	Sudirman	KOIPES-05-A-153	KT Salewangan	Field Observation and interview related to best practices, legality, environmental, worker welfare, and boundaries marking.
2	Alimuddin B	KOIPES-05-A-167	KT Salewangan	
3	Ramli	KOIPES-05-A-170	KT Salewangan	
4	Abdul Syukur	KOIPES-06-A-189	KT Mekar Sawit	
5	Hamza. S	KOIPES-06-A-192	KT Mekar Sawit	
6	Sorti. R	KOIPES-06-A-202	KT Mekar Sawit	
7	Hamsa. N	KOIPES-06-A-203	KT Mekar Sawit	
8	Anton Seho	KOIPES-06-A-212	KT Mekar Sawit	
9	H. Iskandar	KOIPES-07-A-219	KT Mekar Sari	
10	Bahar. B	KOIPES-07-A-224	KT Mekar Sari	
11	Hazardous storage	-	-	Field Observation and interview related to hazardous waste handling

2.3	Stakeholder Consultation and Stakeholders Contacted
2.3.1	Summary of stakeholder consultation process.
MS-B	<p>Consultation of stakeholders for Koperasi Pemasaran Ikatan Petani Sawit Swadaya (KOIPESS) was held by:</p> <ul style="list-style-type: none"> • Public announcement on MUTU and RSPO websites on 20 January 2023 • Public consultation meeting with government institution 28 February 2023 • Public consultation meeting with village representatives on 28 February 2023 • Consultation with NGO (WWF, Sawit Watch & Walhi) via email on 21 February 2023 <p>Numbers of input from stakeholders were clarified by Koperasi Pemasaran Ikatan Petani Sawit Swadaya (KOIPESS) as a part of this report.</p>
2.3.2	Stakeholder contacted
	Please find appendix 1
2.4	Determining Next Assessment
	The next visit (ASA-1) will be conducted eight (8) months to twelve (12) months after issuance of certificate.

3.0 ASSESSMENT FINDINGS

3.1 Summary of Assessment Report of the RSPO Certification

MUTUAGUNG LESTARI has conducted an assessment of Koperasi Pemasaran Ikatan Petani Sawit Swadaya (KOIPESS) operation consisting of **Two hundred Twenty-Four (234)** smallholders.

During the assessment, there were Four (4) Nonconformities and Five (5) opportunity(s) for improvement were identified.

MUTUAGUNG LESTARI found that **Koperasi Pemasaran Ikatan Petani Sawit Swadaya (KOIPESS)** complied with the requirements of **RSPO Independent Smallholder Standard, Indonesia National Interpretation for the Production of Sustainable Palm Oil 2020, endorsed by the RSPO Board of Governors on 14 February 2022 and RSPO Certification Systems for Principles & Criteria and RSPO Independent Smallholder Standard Endorsed by the RSPO Board of Governors on 12 November 2020.**

Therefore, MUTUAGUNG LESTARI Recommends RSPO Certification of compliance is **issued**

3.1.1 The system requirements for Group Formation and Management (including the Internal Control System) that are only applicable to the group manager.

Ref Std.	VERIFICATION RESULT of MUTU-Certification	
A – ICS: Group Entity and Group Management Requirements		
A.1		
The Group demonstrates that they are legally formed		
A.1.1		
E		
<p>The cooperative shows the Minutes of Establishment of the Association of Independent Smallholders Cooperatives on September 29, 2021. Based on the minutes, it is known that the composition of the management of the cooperative is as follows:</p> <ul style="list-style-type: none"> Chairman : Amran Secretary : Sopiana Treasurer : Abd. Syukur <p>The appointment of the management has been agreed upon by the members as evidenced by approval based on the results of interviews and minutes of the formation of the cooperative.</p> <p>In addition, the Decree of the Association of Independent Palm Oil Smallholders (KOIPESS) Number 007/KOIPESS/III/2022 concerning the Formation of the Board of Management for the period 2022 – 2026 dated March 19, 2022. Based on the decree, it is known that the composition of the ICS board is as follows:</p> <ul style="list-style-type: none"> ICS Manager : Muhlis Luddin ICS Secretary : Supra Rahmawati Administrative unit Counselling and outreach unit OHS and emergency response unit. Hazardous waste handling unit Protection of Women and Children Business manager : Hermansyah Production and marketing units Trade service unit 		
MS-A & MS-B		
Same as E		

A.1.2
E

Legality documents related to KOIPESS are proven by the following documents:

1. Deed of establishment of the Marketing Cooperative Association of Independent Palm Oil Farmers Number 20 dated 16 December 2021 by notary & PPAT Fatimah Syamsul ., SH., M.Kn
2. Decree of the Minister of Law and Human Rights of the Republic of Indonesia Number AHU-0014126.AH.01.26 of 2021 dated 20 December 2021
3. Risk-based business license with Business Identification Number 1410220029176 issued on October 14, 2022, through OSS

MS-A & MS-B

Same as E

A.1.3
E

Membership requirements are contained in the SOP for Member Requirements Document No.: KOIPESS/SOP-PSA/DIR/001 effective October 2021 with the following details:

1. Owns land in the vicinity of Bulubonggu Village and Benggaulu Village, Dapurang District, Pasangkayu Regency.
2. Status of APL land and there is no conflict on the land.
3. Able to show land certificate.
4. Registered in a certified farmer group and registered as a member of the Independent Palm Oil Farmers Association Cooperative.

MS-A & MS-B

Same as E

A.1.4
E

Based on the results of the document review, it was found that all members (234 smallholders) had signed the membership requirements set forth in the smallholders' statement, for example those signed by smallholders with the initials I from Benggaulu Village and with the initials B from Bulu Bonggu Village on October 10, 2021 which contains, among others:

1. Understanding the importance of sustainable production
2. Farmer will join a group of smallholders to participate in self-help group certification with the RSPO Independent Smallholders Standard and comply with the relevant principles, criteria and indicators.
3. The farmer will provide information - information to the group manager such as information on land ownership, location coordinates, land ownership status, any disputes over existing land and so on
4. The commitment of smallholders to comply with the requirements of the RSPO principles and criteria such as no forced labour, paying wages according to the minimum wage, no discrimination, not using paraquats, participating in training etc.

The results of FGD with 22 sample farmers found that all members had agreed and signed the membership requirements letter. Members also understand the requirements and commitments that must be met when joining KOIPESS.

MS-A & MS-B

Based on the results of the document review, it is known that all members (234 smallholders) have signed the membership requirements set forth in the smallholder statement which contains among other things:

1. Understanding the importance of sustainable production
2. Farmer will join a group of smallholders to participate in self-help group certification with the RSPO Independent Smallholders Standard and comply with the relevant principles, criteria and indicators.
3. The farmer will provide information - information to the group manager such as information on land ownership, location coordinates, land ownership status, any disputes over existing land and so on
4. The commitment of smallholders to comply with the requirements of the RSPO principles and criteria such as no forced labour, paying wages according to the minimum wage, no discrimination, not using paraquats, participating in training etc.

The results of FGD with 22 sample farmers found that all members had agreed and signed the membership requirements letter. Members also understand the requirements and commitments that must be met when joining KOIPESS.

Status: Comply

A.2
The Group Manager is responsible for managing the Group for certification
A.2.1
E

KOIPRESS has an ICS implementation plan as indicated by:

1. Formation of the ICS team
2. Development of procedures and policies (\pm 31 procedures)
3. Preparation of work programs for the 2022 and 2023 periods including socialization of the RSPO P&C to farmers, management of land legality (STDB and SPPL) etc and this has been implemented as for STDB and SPPL which are already owned by farmers and Socialization of RSPO independent plantation standards on 9 April 2022 which was attended by 41 people.

The plan is evaluated every year to ensure the achievement of the plan.

MS-A & MS-B

The cooperative also displays documentation of the implementation of work programs carried out in 2022-2023, such as:

- Management review meetings.
- Land legal management such as STDB and SPPL

Examples of implementation of work programs include :

- RSPO P&C socialization of independent smallholders on April 9, 2022, which was attended by 41 participants.
- HCV and HCS training on September 18, 2022, which was attended by 56 participants.
- Good Agricultural Practices training on May 19, 2022, which was attended by 31 participants.

Based on interviews with group members, it is known that they understand about ICS, such as SOP and farmer group policies.

A.2.2
E

The group manager has managed 234 KOIPRESS members to commit to the RSPO independent smallholder standard by signing a smallholder statement in October 2021 which includes a commitment not to use forced labor, pay wages according to the minimum wage, no discrimination, not use paraquats, participate in training , zero burning, minimizing pesticides, etc.

To ensure members understand and implement the agreements that have been made, the ICS team was formed as indicated in the Decree of the Association of Independent Smallholders Cooperatives (KOIPRESS) Number 007/KOIPRESS/III/2022 concerning the Formation of Management for the period 2022 – 2026 dated 19 March 2022. In addition, regular training and outreach to all members has been carried out.

Based on interviews with group managers, personnel can explain the commitment of management and members in accordance with RISS and have members monitor their implementation in the field.

MS-A and MS-B

During the audit activities, KOIPRESS management can demonstrate understanding and competence towards the RSPO ISH Standard, for example as shown by:

- Formation of an organizational structure accompanied by job descriptions
- Conduct field visits to smallholders' fields to ensure compliance with ISH standards
- Implementation of socialization and training routinely and periodically for all group members

The group manager has managed 234 KOIPRESS members to commit to the RSPO independent smallholder standard by signing a smallholder statement in October 2021 which includes a commitment not to use forced labor, pay wages according to the minimum wage, no discrimination, not use paraquats, participate in training, zero burning, minimizing pesticides, etc.

To ensure members understand and implement the agreements that have been made, the ICS team was formed as indicated in the Decree of the Association of Independent Smallholders Cooperatives (KOIPRESS) Number 007/KOIPRESS/III/2022 concerning the Formation of Management for the period 2022 – 2026 dated 19 March 2022. In addition, regular training and outreach to all members has been carried out.

Based on interviews with group managers, it is known that managers understand about RSPO certification and certification requirements. The group manager also easily manages members during audit activities and provides the necessary information for certification.

A.2.3

E

Koperasi Pemasaran Ikatan Petani Sawit Swadaya (KOIPESS) can show the 2022 work plan documents included in the ICS work plan in the field of capacity building. All of these trainings are planned to be carried out before the audit activities are carried out, namely from January to December, based on the 2022 work plan realization document as well as several related supporting documents such as activity minutes, training activity reports and monitoring reports indicating that all activities planned in the 2022. Work Plan 2022 has been realized according to the specified schedule. The training activities also adjust to the needs of members which are obtained from the results of monthly meetings. The training activities also continue to be developed according to requests in the RSPO standard which are assisted by SPKS (*Serikat Petani Kelapa Sawit*) in preparing the components in the training and the presenters. Topics or materials provided for training based on the realization of the 2022 work plan include training on Good Agricultural Practices (GAP), occupational health and safety, environmental conservation, and other material related to the RSPO.

MS-A

The group manager can demonstrate the gradual approach that has been taken for members to take part in each training carried out, this can be seen from the process of the Cooperative's journey to take part in certification which has been running for about 3 years, the attendance list for training and the same type of training is repeated to ensure all members have received the same training. Meanwhile, Group managers can show documentation of training realization from 2022. The document shows that all members who are members of the Cooperative in 2022 have attended several planned trainings including:

- Training on palm oil pricing mechanisms
- Training on record keeping for production, including production inputs and yields, transactions, and varieties.
- BMP, FPIC and HIRAC training
- Training on free and fair employment
- training on discrimination, harassment and violence in the workplace
- HCV training and animal and plant protection
- annual training covering the RSPO Independent Smallholder Standard

All of the training was provided by competent parties, namely from assistants appointed by SPKS, the Cooperative also stated that it did not rule out that if members needed other training that could not be accommodated by the Facilitator or SPKS, they would look for trainers from outside who felt more competent.

MS-B

The Management Unit can show the realization of training that has been carried out during the 2022 period, the types of training that have been carried out include:

- Training on the mechanism of determining the price of palm oil which was held on 23 April 2022 and was attended by 34 members
- Training on record keeping for production, including production inputs and yields, transactions, and varieties conducted on 9 April 2022 and attended by 41 members
- GAP training which was held on 19 May 2022 and was attended by 31 members
- FPIC and HIRAC training which was held on 4 June 2022 and was attended by 37 members
- Training on free and fair employment conducted on 9 April 2022 and attended by 41 members
- training on discrimination, harassment and violence at work conducted on 4 June 2022 and attended by 37 members
- HCV training and wildlife protection conducted on 18 September 2022 and 23 April 2022 and attended by a total of 52 members
- Annual training covering the RSPO Independent Smallholder Standard which was conducted on 9 April 2022 and attended by 41 members.

Based on the results of field observations and Focus Group Discussions conducted with 20 sample members, it was shown that all samples stated that they had received training and socialization related to HCV, BMP, OHS and others. However, not all sample members could explain their implementation in the field. The results of verification of the socialization evidence documents also show that not all members have participated in the training and outreach activities.

Related to this, the cooperative and ICS explained that socialization and training were given in stages with the following stages:

- Head of Cooperative and Head of ICS conduct training
- The Head of the Cooperative and the Head of the ICS conveyed the results of the training they received to 18 members of the ICS through outreach activities
- ICS members then conveyed to the 7 farmer group leaders the information they had obtained from the outreach activities
- The head of the farmer group then conveys this to all of their respective members.

However, documentation of the activities was only carried out up to the socialization stage to ICS members and only a few members, so there was no evidence that all members had participated in the socialization activities. Based on this, the cooperative has the opportunity to make improvements in documenting activities so that it can prove that all members of the cooperative have received the same socialization and training. **(OFI)**.

	Status: Comply	
--	-----------------------	--

B – ICS: Policies and Management

B.1 The group Internal Control System contains documented policies and procedures for operational management.

B.1.1
E
The management unit already has an ICS for operational management which is regulated in the *AD-ART* and procedures related to operational activities. The procedure for expelling members and sanctions for members who do not comply with the ICS, which are regulated in the *AD-ART* which explains about Loss of Membership, Suspension and Termination. As for the procedure for carrying out internal audits, it is regulated in SOP Number KOIPESS/SOP-AI/ICS/025 which has been in effect since December 2021 which aims to be a reference in carrying out internal audits.

MS-A & MS-B

Procedures for internal audits are regulated in SOP Number KOIPESS/SOP-AI/ICS/025 which has been in effect since December 2021 which aims as a reference in carrying out internal audits. The procedure also describes internal audit planning, team formation, and internal audit methodology. The procedure also explains that forming an audit team, developing checklists and checklists for internal audits, audit assessments and standards to be met by farmers. The scope of internal audit refers to all aspects required in the RSPO ISH standard.

For the 2022 period, it has been implemented in stages starting from October 18, 2022, to November 11, 2022, for 100% members. Based on the results of the internal audit, there were 7 findings, including:

- Boundary land markers in the form of stakes have not been completely installed.
- Workers do not use PPE.
- Warehouse for hazardous material waste is not yet available.
- There is still a lot of trash in the members' land area.
- There is no HCV-related signboard yet.
- There is no work contract between workers and farmers.
- Not yet planted *Turnera*

In this regard, the management unit has re-demonstrated, compiled a management plan document, and created a timeline for completing internal audit findings. At the time the audit was carried out, not all non-conformances from the internal audit had been closed, for example the *Turnera* planting, in this regard, became **OFI** on related indicators **(4.9)**.

B.1.2

E
KOIPESS already has basic information on smallholders, for example as shown by the following information:

- Muhlis Luddin 1
Farmer ID : KOIPESS-01-A-012
Geolocation : 1° 41' 0.939" S and 119° 26' 27.451" E
Area : 0.7 Ha
FFB production: 11.8 tons/year
SHM : 31.02.11.03.1.01445

STDB : 525/501/STDB-08/2022/Disbunak

SPPL : 1410220029176

- Anton Seho 1

Farmer ID : KOIPESS-06-A-212

Geolocation : 1° 45' 32.008" S and 119° 24' 36.221" E

Area : 2 Ha

FFB production : 33.45 tons/year

SHM : 31.02.11.01.1.00454

STDB : 525/418/STDB-08/2022/Disbunak

SPPL : 1410220029176

As a result of document verification, KOIPESS can show evidence that the member has signed and accepted the membership requirements as set forth in the "Surat Pernyataan Pekebun" the letter is signed by the member, and it explains that:

1. Farmers understand the importance of sustainable production.
2. Farmer will join a group of smallholders to participate in self-help group certification with the RSPO Independent Smallholders Standard and comply with the relevant principles, criteria and indicators.
3. The farmer will provide information - information to the group manager such as information on land ownership, location coordinates, land ownership status, any disputes over existing land and so on
4. The commitment of smallholders to comply with the requirements of the RSPO principles and criteria, such as no forced labor, paid wages, no discrimination, etc.

Example of a member statement, for example on behalf of Muhlis Luddin and Anton Seho signed in October 2021

MS-A

Same as E

MS-B

Same as E

Status: Comply

C – ICS: Group business planning

C.1
The group has a group Business Plan prepared with the participation and contributions of group members.

C.1.1
E
 The KOIPESS already has a group business plan listed in the estimated production for the period March 2023 - February 2024 which consists of production estimates and planned revenues as well as land expansion plans with the following details:

DESCRIPTION	UNIT	MARCH 2023 – FEBRUARY 2024
Production Projection	Ton	8,832
Plan to Add New Members (100 farmers)	HA	200

MS-A

The cooperative has an SOP for Monitoring Member Assessment with code No. SOP ICS 22 was published on December 20, 2021, which explains in point 1 that monitoring for members is carried out every month at farmer group meetings to monitor harvest records, fertilization, and others.

The cooperative shows the business plan listed in the estimated production for March 2023 – February 2024, but the cooperative has not been able to show the annual group business plan for the 2022 period which includes production estimates, income based on historical records and expansion plans and has been reviewed. So, this becomes **the nonconformity No. 2023.01 with the Major category.**

MS-B

The KOIPESS shows the completeness of the administrative requirements for becoming a member of a cooperative which includes

among others the obligation of members to provide a basic fee of IDR 20,000/once during registration and a mandatory contribution of IDR 5,000/every month which is recapitulated by the treasurer of the cooperative. Furthermore, the funds collected from mandatory fees and basic fees will be used as initial capital in managing the organization before receiving incentives from selling RSPO certified products.

For incentives from selling the RSPO certificated product itself, The KOIPESS refers to the RSPO Credit Incentive Distribution SOP with Code No. SOP ICS 20 was published on December 20, 2021, which explains the agreement to allocate funds for the sale of certificates as follows:

- 25% of sales proceeds are allocated for the 1st year Surveillance Audit.
- 1% of sales proceeds is allocated for contribution to the village.
- 20% of sales proceeds are allocated for the operational costs of ICS management.
- 6% of sales proceeds are allocated to Cooperative cash.
- 48% is distributed to cooperative members according to the needs and agreement of the members discussed in the *forum/musyarawah* together.

The results of interviews with members of the cooperative stated that they really felt the difference since joining the cooperative, for example increasing knowledge of oil palm management such as how to fertilize and complete PPE.

The first stage of the cooperative audit assessment is MS B, which shows that the cooperative has been able to stand independently, without any income from credit sales (book and claim). From this evidence it can be ascertained that cooperatives can survive financially very well.

C.1.1 MS-A	Status:Nonconformity No. 2023.01 with the Major category
-------------------	---

C.2

The ICS of the group is integrated with the Group's Management Plan.

C.2.1
E
The KOIPESS already has a group business plan listed in the work program for the period 2022 – 2023 which consists of planned production and income estimates as well as land expansion plans. In addition, smallholders also have training/capacity development plans to increase the productivity of group members, for example for the 2022 period, namely:

- Agronomy training
- Policy, OHS and HCV training.
- Training on sustainability (ISH) and internal audits

All training/knowledge improvement plans are carried out to increase the productivity of group members. In addition, management also conducts good data collection on FFB production, and approaches factories around them to become buyers of the FFB produced in an effort to strengthen relationships in the supply chain.

Plans for continuous improvement projects included in the group management plan include continuing to increase human resource development targets both in terms of the capacity and quantity of its members. The group management plan has also included people who are responsible for implementing the plan in their respective fields as evidenced by the organizational structure consisting of the association supervisor, association chairman, vice chairman, treasurer, and secretary.

Based on the results of interviews with ICS, it was found that the personnel had been able to explain the responsibilities of each position and the implementation of the activities they had planned. Furthermore, smallholders also show a list of SOPs that they already have, including the following:

NO	SOP Numbers	Subject
1	SOP KOIPESS 001	SOP Member Requirements
2	SOP KOIPESS 002	SOP Member Registration
3	SOP KOIPESS 003	SOP Member Logout and Login
4	SOP KOIPESS 004	SOP Training and Outreach
5	SOP KOIPESS 005	SOP Replanting
6	SOP KOIPESS 006	SOP Nurseries
7	SOP-ICS 001	SOP Harvest
8	SOP-ICS 002	SOP Pruning

9	SOP-ICS 003	SOP FFB Recording
10	SOP-ICS 004	SOP FFB sales
11	SOP-ICS 005	SOP FFB delivery
12	SOP-ICS 006	FFB Price Information SOP
13	SOP-ICS 007	FFB Quality Determination SOP
14	SOP-ICS 008	Fertilization SOP
15	SOP-ICS 009	SOP for Chemical Use
16	SOP-ICS 010	Spraying SOPs
17	SOP-ICS 011	SOP for Pest & Disease Control
18	SOP-ICS 012	SOP for Identification of OHS and Environmental Aspects
19	SOP-ICS 013	SOP for Hazardous Waste Management
20	SOP-ICS 014	SOP for Spill or Spill Control
21	SOP-ICS 015	SOP for Emergency Response
22	SOP-ICS 016	SOP for HCV Assessment, Supervision and Monitoring
23	SOP-ICS 017	SOP for Making & Installing Plot Stakes
24	SOP-ICS 018	SOP Request Data and Information
25	SOP-ICS 019	SOP of Independent Smallholder Data Update System
26	SOP-ICS 020	RSPO Credit Incentive Sharing SOP
27	SOP-ICS 021	Member Warning & Sanction SOP
28	SOP-ICS 022	SOP Monitoring & Member Assessment
29	SOP-ICS 023	SOP for Compensation for Transfer of Legal Rights (FPIC)
30	SOP-ICS 024	SOP for Corrective and Preventive Actions
31	SOP-ICS 025	Internal Audit SOPs
32	SOP-ICS 026	SOP for Reform of Legislation
31	SOP-ICS 027	SOP for Complaint Submission Mechanism

MS-A

Cooperatives show a group management plan listed in the work program for the 2022-2023 period which includes a training plan and fulfillment of the legality of members and cooperatives, but cooperatives have not been able to show that the group management plan has been reviewed for implementation at least annually. So, this becomes **the nonconformity No. 2023.02 with the Major category**.

MS-B

The KOIPESS shows that each member has signed a smallholder statement containing letter B, namely that they will join a group of smallholders to take part in group certification according to the RSPO Independent Smallholders Standard and comply with related principles, criteria and indicators, for example those signed by smallholders with the initials I from Benggaulu Village and with the initials B from Bulu Bonggu Village on October 10, 2021.

From the group management plan listed in the cooperative activity program, for example, for the period January 2022 - January 2023, several activities have been realized, including:

- Fulfillment of member land legality (*STDB* and *SPPL*).
- Socialization of RSPO independent plantation standards on 9 April 2022 which was attended by 41 people.
- Socialization of BMP on 19 May 2022 which was attended by 31 people.
- Dissemination of free and fair employment on 9 April 2022 which was attended by 41 people.

Based on field visits to Bulu Bonggu Village and Benggaulu Village farmers, it was found that farmers had implemented best plantation management practices as well as environmental protection such as collecting ex sacks of fertilizer, etc.

C.2.1 MS-A	Status: Nonconformity No. 2023.02 with the Major category	
D – ICS: Group Trading System for Certified Volumes		
D.1		

The group has a procedure and system in place for the tracking of FFB.

D.1.1
E
At this time, KOIPESS has not yet received an RSPO certificate, so it does not yet have records of production and sale of certified FFB. However, a "*buku catatan petani*" can be shown, which contains records of plant maintenance and production records.

MS-A
At this time, KOIPESS has not yet received an RSPO certificate, so it does not yet have records of certified FFB production and sales.

MS-B
At this time, KOIPESS has not yet received an RSPO certificate, so it does not yet have records of certified FFB production and sales.

Status: Comply

D.2
The group documents and implements a system for the tracking of FFB.

D.2.1
E
Not Applicable.

MS-A
The audit being conducted this time is the first audit for KOIPESS with the MS-B stage (without going through the E and MS-A stages), so that for the previous year the cooperative did not have certified production.

MS-B
The audit being conducted this time is the first audit for KOIPESS with the MS-B stage (without going through the E and MS-A stages), so that for the previous year the cooperative did not have certified production.

Status: Comply

D.3
The group has a procedure and system for premium distribution.

D.3.1
E
KOIPESS has a Standard Operating Procedure for Sharing RSPO Credit Document No. KOIPESS/SOP-PIR/ICS/020, among others, informing the allocation of distribution of funds for the sale of certificates as follows:

- 25% of sales proceeds are allocated for the 1st year Surveillance Audit.
- 1% contribution to the village.
- 20% of sales proceeds are allocated for the operational costs of ICS management.
- 6% of sales proceeds are allocated to Cooperative cash.
- 48% is distributed to cooperative members according to the needs and agreement of the members discussed in the forum/joint deliberations.

The results of interviews with representatives of KOIPESS members, representatives of cooperative management, and representatives of the ICS team did not provide clear information regarding understanding and agreement related to the distribution of incentive allocations as stated in the SOP.

Even though it has been stated in the SOP, until the assessment is completed, there is not enough evidence of an agreement on how to use the premium or the distribution that has been included in the procedure, which is the result of an agreement that is known and understood by all members.

Thus, it can be concluded that the cooperative has not been able to show enough evidence that the method of using the premium has been agreed upon and conveyed to all members in a transparent manner including regarding the procedure/time of payment and the amount of the premium value. It became **Non-conformity No.2023.03 with the Major category**.

MS-A

Currently, KOIPESS has not yet received an RSPO certificate, so it does not yet have records of certified FFB production and sales and records of premium payments.

MS-B

Currently, KOIPESS has not yet received an RSPO certificate, so it does not yet have records of certified FFB production and sales and records of premium payments

D.3.1 E
Status: Non-conformity No.2023.03 with the Major category

3.2.2 The Principal Criteria and Indicators that are applicable to both smallholders (as individual group members) and group managers.

Ref Std.	VERIFICATION RESULT of MUTU-Certification
PRINCIPLE 1: OPTIMISE PRODUCTIVITY, EFFICIENCY, POSITIVE IMPACTS AND RESILIENCE	
1.1	Smallholders establish a legal entity which has organizational capacity to comply with the RSPO Independent Smallholder Standard.
E	<p>Legality documents related to KOIPESS are proven by the following documents:</p> <ol style="list-style-type: none"> 1. Deed of establishment of the Marketing Cooperative Association of Independent Palm Oil Farmers Number 20 dated 16 December 2021 by notary & PPAT Fatimah Syamsul ., SH., M.Kn 2. Decree of the Minister of Law and Human Rights of the Republic of Indonesia Number AHU-0014126.AH.01.26 of 2021 dated 20 December 2021 3. Risk-based business license with Business Identification Number 1410220029176 issued on October 14, 2022, through OSS <p>Fair and Transparent Governance</p> <p>The highest decision holder in a cooperative is the meeting of members as stated in the AD/ART. In addition, a KOIPESS supervisory body was also formed to ensure that institutional implementation is managed in a fair and transparent manner. Based on the results of interviews with representatives of a sample of farmers, it is known that cooperative management has been carried out in a transparent manner, for example by holding regular monthly meetings and holding year-end meetings</p> <p>The results of document review and interviews with sample farmers also revealed that all members had signed the smallholder statement form.</p> <p>Based on the results of the document review, it was found that all members (234 smallholders) had signed the membership requirements set forth in the smallholders' statement, for example those signed by smallholders with the initials I from Benggaulu Village and with the initials B from Bulu Bonggu Village on October 10, 2021 which contains, among others:</p> <ol style="list-style-type: none"> 1. Understanding the importance of sustainable production 2. Farmer will join a group of smallholders to participate in self-help group certification with the RSPO Independent Smallholders Standard and comply with the relevant principles, criteria and indicators. 3. The farmer will provide information - information to the group manager such as information on land ownership, location coordinates, land ownership status, any disputes over existing land and so on 4. The commitment of smallholders to comply with the requirements of the RSPO principles and criteria such as no forced labour, paying wages according to the minimum wage, no discrimination, not using paraquats, participating in training etc. <p>The results of FGD with 22 sample farmers found that all members had agreed and signed the membership requirements letter. Members also understand the requirements and commitments that must be met when joining KOIPESS.</p> <p>MS-A</p> <p>The cooperative shows the Decree of the Association of Independent Smallholders Cooperatives (KOIPESS) Number 007/KOIPESS/III/2022 concerning the Formation of Management for the period 2022 – 2026 dated 19 March 2022. Based on the decree it is known that the composition of the ICS board is as follows:</p> <ul style="list-style-type: none"> • ICS Manager : Muhlis Luddin • ICS Secretary : Supra Rahmawati B • Administrative unit • Counselling and outreach unit • OHS and emergency response unit. • Hazardous material handling unit • Protection of Women and Children • Business manager : Hermansyah • Production and marketing unit

- Trade service unit

Based on the results of interviews with the ICS team, it is known that they have received routine training on a regular basis such as training to carry out internal audits, financial management mechanisms and best management practices training provided by the companion (SPKS – Palm Oil Farmers Union). Furthermore, the ICS team will manage and plan training for all members.

MS-B

Institutional management is carried out by the management of the cooperative while ensuring the compliance of all members with the agreements and conditions set is the task of the ICS team. Both the cooperative management and the ICS team collaborate to ensure that the governance of the implementation of activities runs well. In addition, there is also a supervisory body to provide input and suggestions to cooperative management.

As the results of interviews with management representatives, the ICS team and the supervisory body it is known that the highest decision is a member meeting. In member meetings, matters related to cooperative management will be discussed and conveyed in a transparent manner, especially regarding work plans and financial management.

Status: Comply

1.2

Smallholders have the capacity to effectively manage their farm.

E

Not applicable in this stage.

MS-A

Plantation management carried out by all members of the Cooperative is carried out uniformly according to the directions from the group manager, the agronomy assistant team and assistants from SPKS. Activities carried out include:

- Fertilization carried out according to recommendations based on the results of leaf and soil tests.
- Stacking of fronds which is done in a parallel form where it is considered very effective in application and can be a marker for the cooperative member's estate. Besides that, it can also maximize the harvesting process so that no FFB is missed.
- As well as all other agronomic activities in accordance with the Cooperative guidelines.

Based on the results of interviews with the management and members of the Cooperative, it was stated that the recording of FFB produced from each plantation was carried out in the order of recording, namely recording the Bill of the proceeds from the sale of FFB made by the FFB transporter into the logbook, which was carried out every harvest, then the results of the recording were recapitulated at each meeting. monthly for each village carried out by the village assistant. After obtaining the monthly data, the village assistant then gives the results of the recapitulation to the Chairperson of the Farmers Group and then submits it to the core management at the head office to be recorded in the Cooperative production data document.

All documents resulting from the recording are well documented in the form of hard files and soft files. Based on the results of verification of production data, it can be seen that there has been a significant increase when compared from data for 2019 before proper maintenance was carried out, with data for 2022 which has followed the Cooperative's standard of care. SPKS can also show evidence that it has conducted training in 2022, including:

- Training on the mechanism of determining the price of palm oil which was held on 23 April 2022 and was attended by 34 members.
- Training on record keeping for production, including production inputs and yields, transactions, and varieties conducted on 9 April 2022 and attended by 41 members.
- BMP training which was held on May 19 2022 which was attended by 31 members, June 20 2022 which was attended by 57 people, June 21 2022 which was attended by 24 people, etc.
- Annual training covering the RSPO Independent Smallholder Standard which was conducted on 9 April 2022 and attended by 41 members.

Based on the verification of the activity minutes, it shows that the activities have been carried out in its entirety to all members which can be proven by the number of participants who are in accordance with the number of members. This proves that cooperative has completed plantation business operation, monitoring and planning training.

MS-B

The results of the Focus Group Discussion with 20 sample members indicated that cooperative members had received training related to agricultural management and could explain in depth. The results of field observations also showed that all sample plots visited had carried out the best plantation management practices as provided in the socialization, for example with frond preparation techniques, treating pest control plants, not applying chemical pesticides/insecticides, and applying fertilizers according to the guidelines. Members can also show FFB production recording data which is recorded for each harvest activity and recapitulated every month. This data can be accounted for because all sales receipts are also attached to the data recording document. The data that has been recorded is then submitted to the Chair of the Farmers Group and then recapitulated by ICS every month.

Status: Comply

1.3

Smallholders implement good agricultural practices (GAP) on their farms.

E

The KOIPESS has mechanisms for implementing good plantation practices, including the following:

- SOP-ICS 001 concerning Harvest SOP.
- SOP-ICS 002 regarding SOP Pruning.
- SOP-ICS 008 regarding Fertilization SOP.
- SOP-ICS 010 regarding Spraying SOP.
- SOP-ICS 011 concerning SOP for Pest and Disease Control.
- SOP KOIPESS 005 regarding SOP Replanting.
- SOP KOIPESS 006 concerning Nursery SOPs.

In addition, each member has also signed a smallholder statement containing letter D point 14 which is a commitment to ensure that smallholders use the best management practices, for example signed by farmers with the initials I from Benggaulu Village and with the initials B from Bulu Bonggu Village on date October 10, 2021.

MS-A

The KOIPESS also has a training program for members regarding implementation of good farming practices. The realization of this program has been carried out in stages, for example in 2022, namely on May 19 2022 which was attended by 31 people, June 20 2022 which was attended by 57 people, June 21 2022 which was attended by 24 people, etc.

Based on interviews with farmers, for example farmers from Bulu Bonggu Village and farmers from Benggaulu Village, it was found that workers were able to explain the criteria for FFB maturity, fertilization intervals and doses, weed control and plant pests.

Based on the verification of the activity minutes, it shows that the activities have been carried out in its entirety to all members which can be proven by the number of participants who are in accordance with the number of members. This proves that cooperative has completed plantation business operation, monitoring and planning training.

MS-B

The results of field visits show that farmers have implemented GAP practices properly and sustainably such as for example not spraying on river banks, not clearing land by burning, techniques for stacking fronds and maintaining good soil moisture and so on. Farmers also keep records related to FFB production, use of fertilizers and pesticides and other maintenance activities.

All plantation activities are recorded in the farmer's logbook for each farmer which includes productivity, FFB sales, fertilization, pruning, etc. For example, the recording of one of the farmers with the initials AS Bulu Bonggu Village in November-December 2022, namely:

Description	Unit	November 2022	December 2022
Production	Kg	2,038	1,927
FFB sales	IDR	4,058,000	3,854,000
Fertilizer	Sack	8 sack NPK	-
Pruning	Plant	195	-

Status: Comply

PRINCIPLE 2: ENSURE LEGALITY, RESPECT FOR LAND RIGHTS AND COMMUNITY WELLBEING

2.1
Smallholders have legal or customary rights to use the land in accordance with national and local laws and customary practices.
E

The cooperative already has geolocation data for each member, including checking the legal status of the land for each member. The results of the verification are set forth in the KOIPESS member database which has the following information:

- Muhlis Luddin 1
Farmer ID : KOIPESS-01-A-012
Geolocation : 1° 41' 0.939" S and 119° 26' 27.451" E
Area : 0.7 Ha
FFB production: 11.8 tons/year
SHM : 31.02.11.03.1.01445
STDB : 525/501/STDB-08/2022/Disbunak
SPPI : 1410220029176
- Anton Seho 1
Farmer ID : KOIPESS-06-A-212
Geolocation : 1° 45' 32.008" S and 119° 24' 36.221" E
Area : 2 Ha
FFB production : 33.45 tons/year
SHM : 31.02.11.01.1.00454
STDB : 525/418/STDB-08/2022/Disbunak
SPPL : 1410220029176

MS-A

Based on the results of a document review and interviews with representatives of cooperative management and the Head of Bolu Bonggu Village, it is known that one of the requirements for membership is to have land ownership documents. For now, the status of land ownership for all KOIPESS members is SHM and Land Certificates.

The cooperative already has geolocation data for each member, including checking the legal status of the land for each member. The results of the verification are set forth in the KOIPESS member database which has the following information:

- Muhlis Luddin 1
Farmer ID : KOIPESS-01-A-012
Geolocation : 1° 41' 0.939" S and 119° 26' 27.451" E
Area : 0.7 Ha
FFB production: 11.8 tons/year
SHM : 31.02.11.03.1.01445
STDB : 525/501/STDB-08/2022/Disbunak
SPPL : 1410220029176
- Anton Seho 1
Farmer ID : KOIPESS-06-A-212
Geolocation : 1° 45' 32.008" S and 119° 24' 36.221" E
Area : 2 Ha
FFB production : 33.45 tons/year
SHM : 31.02.11.01.1.00454
STDB : 525/418/STDB-08/2022/Disbunak
SPPL : 1410220029176

Based on the document review, it is also known that there is no difference in the name between the owner and the written name of the SHM.

MS-B

Based on the results of the document review, it is known that out of 234 KOIPESS members, there are 13 members whose land ownership status is still in the form of SKT. In the RSPO principles and criteria guidelines for independent smallholders it is stated that independent smallholders are encouraged to improve the legality status of their land by planning to own SHM. Based on this, KOIPESS has the opportunity to develop a plan and continue to show positive progress to improve the legal status of land so that in

the end all members have land legality in the form of SHM. **OFI**

Based on field visits, for example to Bulu Bonggu Village and Benggaulu Village, it is known that there are boundaries for farmers' areas in the form of stakes and natural boundaries.

Status: Comply

2.2

Smallholders have not acquired lands from indigenous peoples, local communities or other users without their free, prior and informed consent (FPIC), based on a simplified FPIC approach.

E

Based on the results of a document review and interviews with sample farmer representatives, it is known that land ownership has been hereditary since the 1980s. Until now there is no land ownership based on buying and selling. Similar information was also conveyed by the Head of Bolu Bonggu Village who stated that the majority of KOIPESS members were residents, and a small number were immigrants who married native residents.

Although for now the acquisition of land is inherited from generation to generation, the cooperative also provides training related to FPIC to all of its members. KOIPESS members have been able to explain their understanding of the FPIC process if they later have plans to develop land.

The cooperative already has geolocation data for each member, including checking the legal status of the land for each member. The results of the verification are set forth in the KOIPESS member database which has the following information:

- Muhlis Luddin 1
Farmer ID : KOIPESS-01-A-012
Geolocation : 1° 41' 0.939" S and 119° 26' 27.451" E
Area : 0.7 Ha
FFB production: 11.8 tons/year
SHM : 31.02.11.03.1.01445
STDB : 525/501/STDB-08/2022/Disbunak
SPPL: 1410220029176
- Anton Seho 1
Farmer ID : KOIPESS-06-A-212
Geolocation : 1° 45' 32.008" S and 119° 24' 36.221" E
Area : 2 Ha
FFB production : 33.45 tons/year
SHM : 31.02.11.01.1.00454
STDB : 525/418/STDB-08/2022/Disbunak
SPPL : 1410220029176

Based on the document review, it is also known that there is no difference in the name between the owner and the written name of the SHM and the land owner obtains the land by buying, inheriting, etc.

MS-A & MS -B

Same as E

Status: Comply

2.3

The right to use the land is not disputed by indigenous peoples, local communities or other users.

E

Based on the results of a document review and interviews with sample farmer representatives, it is known that land ownership has been hereditary since the 1980s. Until now there is no land ownership based on buying and selling. Similar information was also conveyed by the Head of Bolu Bonggu Village who stated that the majority of KOIPESS members were local residents, and a small number were immigrants who married native residents. Thus, there has never been a history of land disputes.

All members have also signed the Land Dispute disclosure for ISH form which was confirmed to the parties such as the witness and the village head. The planter's statement letter also states the willingness to inform and resolve land disputes (if any).

MS-A

Based on the results of a document review and interviews with sample farmer representatives, it is known that land ownership has been hereditary since the 1980s. Until now there is no land ownership based on buying and selling. Similar information was also conveyed by the Head of Bolu Bonggu Village who stated that the majority of KOIPESS members were local residents, and a small number were immigrants who married native residents. Thus, there has never been a history of land disputes.

All members have also signed the Land Dispute disclosure form for ISH which was confirmed to the parties such as the witness and the village head. The plantation party's statement also states willingness to inform and resolve land disputes (if any), for example the one signed by the farmer with the initial B from Bulu Bonggu Village, Group Manager, and head of Bulu Bonggu village on 24 February 2023.

MS-B

Based on the results of a document review and interviews with sample farmer representatives, it is known that land ownership has been hereditary since the 1980s. Until now there is no land ownership based on buying and selling. Similar information was also conveyed by the Head of Bolu Bonggu Village who stated that the majority of KOIPESS members were local residents, and a small number were immigrants who married native residents. Thus, there has never been a history of land disputes.

All members have also signed the Land Dispute disclosure for ISH form which was confirmed to the parties such as the witness and the village head. The Farmers statement letter also states the willingness to inform and resolve land disputes (if any).

Status: Comply

2.4

Smallholder plots are located outside of areas classified as national parks or protected areas, as defined by national, regional or local law or as specified in National Interpretations.

E

Based on the results of interviews with representatives of the Plantation Service of the District of Pasang Kayu it is known that the location of the KOIPESS farmers is in an area designated for a plantation area. Apart from that, legally, the members also have certificates of ownership rights, and some others are in the form of land certificates.

Based on the overlay between the distribution map of KOIPESS members and the PIPPIB map for period 2 of 2022 and the forest area map of the ministry of environment and forestry according to decree no. 733/Menhut-II/2014 indicates that all members are in other use areas.

MS-A

Based on the results of interviews with representatives of the Plantation Service of the District of Pasang Kayu it is known that the location of the KOIPESS farmers is in an area designated for a plantation area. Apart from that, legally, the members also have certificates of ownership rights, and some others are in the form of land certificates.

Based on the overlay between the distribution map of KOIPESS members and the PIPPIB map for period 2 of 2022 and the forest area map of the ministry of environment and forestry according to decree no. 733/Menhut-II/2014 indicates that all members are in other use areas.

MS-B

Based on the results of interviews with representatives of the Plantation Service of the District of Pasang Kayu it is known that the location of the KOIPESS farmers is in an area designated for a plantation area. Apart from that, legally, the members also have certificates of ownership rights, and some others are in the form of land certificates.

Based on the overlay between the distribution map of KOIPESS members and the PIPPIB map for period 2 of 2022 and the forest area map of the ministry of environment and forestry according to decree no. 733/Menhut-II/2014 indicates that all members are in other use areas.

Status: Comply

2.5

For new plantings, smallholders do not clear or acquire any land without obtaining the free, prior and informed consent (FPIC), of indigenous people and/ or local communities and/ or other users, based on a simplified FPIC approach.

Do any smallholders within the group have plans for new plantings of oil palm? If none, SKIP

E
Until now there are no new planting plans from KOIPESS.

MS-A
Until now there are no new planting plans from KOIPESS.

MS-B
Until now there are no new planting plans from KOIPESS.

Status: Comply

PRINCIPLE #3 RESPECT HUMAN RIGHTS, INCLUDING WORKERS' RIGHTS AND CONDITIONS
**3.1
There is no use of forced labour.**

E
The KOIPESS has KOIPESS Decree No. 002/KOIPESS/XII/2021 which was issued on December 20, 2021, concerning the prohibition of discrimination, forced labor and trafficking in persons which explains that KOIPESS members are committed not to discriminate, forced labor and acts of child/labour trafficking.

In addition, each member has also signed a statement from the planters which contains letter D point 3 which is a commitment to ensure that there are no forced labor practices in plantation operations and to stop forced labor practices that still exist, for example signed by a farmer with the initial I from Benggaulu Village and with the initials B from Bulu Bonggu Village on October 10, 2021.

MS-A
The KOIPESS shows a work contract agreement between farmers and workers on December 24, 2022, which explains in article 2 point 4 that farmers are prohibited from:

- Retention of workers' identity documents or passports.
- Imposing recruitment fees to workers.
- Not paying overtime.
- Limiting freedom for workers to resign.
- Bonded work.
- Retention of workers' wages.

The KOIPESS also has a training program for members regarding free and fair employment that is carried out on a voluntary basis and prohibits practices such as withholding identity documents or passports, etc. The realization of this program has been carried out in stages, for example in 2022, namely on April 9 2022 which was attended by 41 people, June 20 2022 which was attended by 57 people, June 21 2022 which was attended by 24 people, etc.

Based on the verification of the minutes of activity, it shows that the activity has been carried out in its entirety to all members which can be proven by the number of participants corresponding to the number of members. This proves that the cooperative has completed operational training, monitoring and plantation business planning.

Based on interviews with farmers, for example farmers from Bulu Bonggu Village and farmers from Benggaulu Village, it was stated that workers who were employed were on a voluntary basis and did not carry out prohibited practices such as withholding identity documents, withholding salaries, etc.

MS-B
Based on direct interviews with cooperative members, it is known that members can demonstrate and understand information related to the prohibition of forced labor. Many members carry out their own activities in managing the estate.

For farmers who use labor, for example farmers from Bulu Bonggu Village and farmers from Benggaulu Village, interview results show that workers get work tools that are provided free of charge, up to a mutually agreed wage setting without any party being harmed.

KOIPESS also pointed out that every farmer has signed a commitment which is in point 3 that "Ensure there is no forced labor practice

in plantation operations and stop forced labor practices that still exist". In line with this, based on interviews with landowners and workers, it was conveyed that there was no withholding of wages and personal documents such as certificates, id cards, etc.

Status: Comply

3.2

Children are not employed or exploited. Work by children is acceptable on family farms, under adult supervision and when not interfering with education programs. Children are not exposed to hazardous working conditions.

E

The KOIPESS has KOIPESS Decree No. 005/KOIPESS/XII/2021 issued on December 20, 2021, concerning the prohibition of using underage children, which explains that workers in independent smallholder plantations must be at least 18 years old and assign children to activities that are not dangerous and under the supervision of their parents.

In addition, each member has also signed a statement from the planters which contains letter D point 8 which is a commitment to ensure that there are no child labor practices in plantation operations and to stop child labor practices that are still ongoing, for example the one signed by the farmer with the initial I from Benggaulu Village and with the initials B from Bulu Bonggu Village on October 10, 2021.

MS-A

The KOIPESS also has a training program for members regarding the prohibition of child labour. The realization of this program has been carried out in stages, for example in 2022, namely on April 9, 2022, which was attended by 41 people.

The KOIPESS shows a work contract agreement between farmers and workers on December 24, 2022, which informs the list of workers and their date of birth. From the verification of these documents, no workers were found under the age of 18 years.

Based on field visits and interviews with farmers, for example farmers from Bulu Bonggu Village and farmers from Benggaulu Village, it was conveyed that personnel already knew the criteria for workers who could be employed, namely those who were 18 years old and there were no workers in the field who were under 18 years old.

MS-B

Refer to requirements E and MS-A.

Status: Comply

3.3

Workers' pays complies with minimum legal requirements, mandatory industry standards as defined by national law or collective bargaining, whichever takes priority in local regulations.

Are there workers on the farm? If no, SKIP

E

The KOIPESS has KOIPESS Decree No. 006/KOIPESS/XII/2021 which was issued on December 20, 2021, concerning payment of wages which explains that KOIPESS is committed to paying wages to workers referring to the provincial minimum wage.

In addition, each member has also signed a smallholder statement containing letter D point 4, namely a commitment to pay the minimum wage in accordance with applicable regulations, for example signed by farmers with the initials I from Benggaulu Village and with the initials B from Bulu Bonggu Village on October 10, 2021.

MS-A

Cooperatives have KOIPESS Decree No. 006/KOIPESS/XII/2021 which was issued on December 20, 2021, concerning payment of wages which explains that cooperative members are committed to paying wages to workers referring to the provincial minimum wage.

A smallholder statement signed by each member of the cooperative in letter D point 4, namely a commitment to pay the minimum wage in accordance with applicable regulations. The cooperative shows a work contract agreement between farmers and workers on December 24, 2022, which explains wages, namely:

- Harvest IDR 120,000/day.
- Average pruning of IDR 2,500/plant.
- Fertilizer IDR 10,000/bag.

Based on the 2023 wages for the Timber Post District, it is IDR 2,871,794/month or IDR 114,872/day, so when compared to wages set by cooperatives, for example for harvesting work, which is IDR 120,000/day, it has exceeded the wages set by the District. While for weed control, the land owner carries out mechanical control using a tripe tool and is carried out by the land owner directly.

The cooperative shows the farmer's notebook and a list of workers working for the landowner for the 2023 period, for example, farmers with the initials AS employing workers with the initials A and farmers with the initials S hiring workers with the initials H. It is known that in 2022 there will be jobs such as harvesting, fertilizing and pruning, but it cannot be shown that workers receive payments according to what was agreed. So, this becomes **the nonconformity No. 2023.04 with the Major category**.

MS-B

Refer to requirements E and MS-A.

3.3 MS A

Status: nonconformity No. 2023.04 with the Major category

3.4

Workers understand their rights and freedom to file a complaint to group manager or relevant third parties, including RSPO.

Are there workers on the farm? If no, SKIP

E

The KOIPESS shows the SOP for Complaint Submission Mechanism with code No. SOP ICS 27 was published in December 2021 which explains the mechanism for handling internal and external complaints.

In addition, each member has also signed a smallholder statement letter containing in letter B, namely commitment to follow group certification in accordance with the RSPO Independent Smallholders Standard and comply with the relevant principles, criteria and indicators including those relating to worker complaints, for example those signed by smallholders with the initials I from Benggaulu Village and with the initials B from Bulu Bonggu Village on October 10, 2021.

MS-A

The KOIPESS also has a training program for members and workers regarding complaint submission. The realization of this program has been carried out in stages, for example in 2022, namely on April 9 2022 which was attended by 41 people, June 20 2022 which was attended by 57 people, June 21 2022 which was attended by 24 people, etc.

Based on the verification of the minutes of activity, it shows that the activity has been carried out in its entirety to all members which can be proven by the number of participants corresponding to the number of members. This proves that the cooperative has completed operational training, monitoring and plantation business planning.

Based on interviews with farmers, for example farmers from Bulu Bonggu Village and farmers from Benggaulu Village, it was conveyed that personnel already knew the mechanism related to submitting complaints and for the 2022 period no complaints had been submitted.

MS-B

Based on interviews with workers, it can be concluded that workers already know the mechanism for complaints/complaints that can be conveyed orally or other communication media to the ICS manager or cooperative management. During 2021-2022, there has been no information on complaints submitted by cooperative members or workers.

Status: Comply

3.5

Working conditions and facilities are safe and meet minimum legal requirements.

E

The KOIPESS shows a work contract agreement between farmers and workers on December 24, 2022, which explains in article 4 that both parties (workers) use personal protective equipment at work.

The KOIPESS also shows that each member has also signed a smallholder statement containing letter D point 6 which is a commitment to provide safe working conditions and facilities, for example signed by farmers with the initials I from Benggaulu Village and with the initials B from Bulu Bonggu Village on October 10, 2021.

MS-A

The KOIPESS has an SOP for Identification of OHS and Environmental Aspects with code No. SOP ICS 12 was published in December 2021 which explains the mechanism for identifying OSH hazards and risks as well as environmental aspects and impacts of plantation management activities.

The KOIPESS also shows the results of identification of hazard aspects published on January 31, 2022, which have identified risks in work areas such as in slashing, harvesting, fertilizer and office activities and ways to mitigate them such as using PPE, training/socialization or creating systems.

Hazard identification and control documents have been disseminated to all members and worker in stages, for example in 2022, namely on June 4, 2022, which will be attended by 37 people, June 20 2022 which was attended by 57 people, June 21 2022 which was attended by 24 people, etc.

Based on the verification of the minutes of activity, it shows that the activity has been carried out in its entirety to all members which can be proven by the number of participants corresponding to the number of members. This proves that the cooperative has completed operational training, monitoring and plantation business planning.

Based on interviews with farmers, for example farmers from Bulu Bonggu Village and farmers from Benggaulu Village, it was conveyed that personnel were aware of the risks involved in working and controlling the hazards and had also been socialized with identification and control documents by the management.

MS-B

The cooperative shows a work contract agreement between farmers and workers on December 24, 2022, which explains in article 4 that both parties (workers) use personal protective equipment at work. A smallholder statement signed by each member of the cooperative in letter D point 6, namely commitment to provide safe working conditions and facilities. The cooperative shows a list of personnel working in the area of cooperative members as many as 14 people as well as plans to procure OHS facilities and infrastructure such as helmets, boots, first aid and others which are planned to be fulfilled in 2023.

In this regard, cooperatives have the opportunity to document the provision and use of OHS facilities and infrastructure to farmers and workers in plantation management activities. (OFI)

As for drinking water and toilet facilities, usually the workers can use them in the private house of the land owner because the distance between the land and the land owner's house is not too far.

Status: Comply

3.6

There is no discrimination, harassment, or abuse on the farm.

Are there workers on the farm? If no, SKIP

E

The KOIPESS has KOIPESS Decree No. 002/KOIPESS/XII/2021 which was issued on December 20, 2021, concerning the prohibition of discrimination, forced labor and trafficking in persons which explains that KOIPESS members are committed not to discriminate, forced labor and acts of child/labour trafficking.

In addition, each member has also signed a smallholder statement containing letter D point 7 which is a commitment to ensure that there is no discrimination, harassment, or violence in the plantation, for example signed by a farmer with the initial I from Benggaulu Village and with the initial B from Bulu Bonggu Village on October 10, 2021.

MS-A

The KOIPESS also has a training program for members regarding no discrimination, harassment, or violence. The realization of this program has been carried out in stages, for example in 2022, namely on April 9 2022 which was attended by 41 people, June 20 2022 which was attended by 57 people, June 21 2022 which was attended by 24 people, etc.

Based on the verification of the minutes of activity, it shows that the activity has been carried out in its entirety to all members which

can be proven by the number of participants corresponding to the number of members. This proves that the cooperative has completed operational training, monitoring and plantation business planning.

The KOIPESS also shows a list of workers for the 2023 period, it was found that workers came not only from Sulawesi, but also from other regions such as Java, etc. Based on interviews with farmers, for example farmers from Bulu Bonggu Village and farmers from Benggaulu Village, it is known that personnel can explain the prohibition of discrimination, harassment, and violence in the workplace, and understand the need for a safe workplace and do not discriminate between workers' rights and obligations.

MS-B

Based on interviews and field observations with farmers and workers from Bulu Bonggu Village and farmers from Benggaulu Village, it is known that workers freely disclose that they work in a place that is free from discrimination, harassment or harassment.

Status: Comply

PRINCIPLE #4 PROTECT, CONSERVE AND ENHANCE ECOSYSTEMS-AND THE ENVIRONMENT

4.1

High Conservation Values (HCVs) on the smallholder plot or within the managed area and High Carbon Stock (HCS) forests identified after November 2019 using the simplified combined HCV-HCS approach are managed to ensure that they are maintained and/or enhanced.

E

All member smallholders have committed to protect HCVs and HCS forests through a precautionary practice approach. This is contained in the Statement Letter of RSPO Certification Commitment Koperasi Pemasaran Ikatan Petani Sawit Swadaya (KOIPESS) which states that all members will "Protecting HCV and HCS through a precautionary practice approach". The group manager and all farmer members have also understood the basic concepts of HCV areas and HCS forests. This was proven from the results of interviews with 20 sample farmers who stated that they knew the types of animals that must be protected, prohibited from burning, hunting and fishing in ways that were not environmentally friendly (poisoning and electrocution) and the prohibition to apply chemicals. around a body of water with a limit of 20 meters. In addition, they have also realized the benefits of the existence of animals and plants around them, for example one farmer explained about the benefits of snakes, eagles and owls which are predators of rats, insect-eating birds which are pest controllers and others.

The results of interviews with the 20 members revealed that their understanding and commitment to implementing the RSPO P&C for Independent Smallholders was quite good, especially related to protecting HCV and HCS through a precautionary practice approach. This is evidenced by the results of interviews with Group Managers who stated their willingness to protect HCV and HCS and socialized them to all existing members. This is in line with the results of interviews with members who stated that they had a general understanding of HCV/HCS and were committed to protecting them.

The management unit also has a policy related to protecting HCV-HCS areas that stated in SOP Number KOIPESS/SOP-PPN/ICS/016 activated in December 2021. The policy has been socialized to all members on 18 September 2022 and 23 April 2022. In addition, an HCV assessment has been carried out in the KOIPESS area located in several villages. The scope for the HCV assessment is to cover all areas of member land that has been planted with oil palm and has never been certified (existing uncertified plantations). The result of HCV assessment is known there is no HCV area in the scope of unit certification. Meanwhile, there is a 2-member area which is closed enough with the border river or riparian area. Based on the explanation above, it can be concluded that the unit of certification has a statement of commitment to participate in RSPO certification, one of which is to protect HCV and HCS through a precautionary practice approach.

MS-A

The cooperative can show evidence that all group members have attended training on the protection of flora and fauna and conservation areas, be it watercourses, peatlands or areas with high erosion potential, as evidenced in the document evidence of the minutes of socialization of HCV and HCS conducted on 18 September 2022 and 23 April 2022 as well as Good Agricultural Practices which was carried out on 19 May 2022 which was attended by all old and new members with a total of 123 participants. The training also explained the prohibition on the application of chemicals around river border areas and water bodies, as well as destroying forest areas. The training is provided by a supervisory team from SPKS who trainers who are competent in their fields. The results of interviews with all sample farmers also proved that they had a good understanding of and could demonstrate understanding of HCV and HCS forests, human-wildlife conflict, and RTE. They can also explain the benefits of the existence of animals and plants around them, for example one farmer explained about the benefits of snakes, eagles and owls which are predators of rats, insect-eating birds

which are pest controllers and others.

MS-B

Based on the results of field observations in several member areas that were included in the sample, management of the river border area had been carried out, for example by installing signboards prohibiting the application of chemicals, planting bamboo, and no traces of chemical application were found in the river border area. Cooperative members can also explain the prohibitions that apply to membership, for example the prohibition against hunting, burning, protecting protected animals and plants, and others.

Status: Comply

4.2

Where the existing smallholder plot has been planted and cleared after November 2005 or is on an area identified as HCS forests after November 2019 up to the eligibility period, a remediation and compensation process appropriate for smallholders based on Land Use Change Analysis (LUCA) will be applicable (Reference preamble).

E

Koperasi Pemasaran Ikatan Petani Sawit Swadaya (KOIPESS) can show information on all smallholder plots converted and planted with oil palm after 2005 as well as all land plot coordinates/maps. A simplified combined HCV-HCS approach has also been used which can be proven in the commitment statement contained in the Statement Letter of Willingness to Follow the RSPO Certification which contains:

- No growers replace primary forest, or are affected by one or more Conservation Values
- No land ownership conflicts.
- Attach a photocopy of land ownership.
- Willing to take part in training and directions from the Cooperative.
- Providing farm information data to farmer groups and cooperatives
- Willing to be assessed by the appointed party in the RSPO certification process.
- Willing to improve the estate continuously.

As well as the statement letter of Smallholder Declaration:

- I recognize the importance of sustainable production.
- I will join a farmer group to pursue group certification of the RSPO ISH Standard and comply with the principles and their relevant criteria and indicators.
- I will provide all information needed to me and the group manager.

MS-A

Based on the verification of communication between the RSPO and the Cooperative represented by the counterpart, namely SPKS, it shows that the Cooperative has identified remediation areas and has submitted them to the RSPO. Other evidence is the results of the LUCA Study for the scope of 234 farmers which will be carried out in 2022 with the final document coming out on September 9, 2022, with PASS status or acceptable.

The cooperative has been able to show evidence of communication with RSPO regarding Disclosure of Liability via email. On 3 August 2022, the RSPO approved the Disclosure of Liability document with the scope written in the email namely "234 Smallholders (320 Plot) with a total managed area of 413.4 Ha" and recommended to proceed to the LUCA study stage. On 9 September 2022, the cooperative sent the LUCA document to RSPO and on the same day, the RSPO responded with the conclusion that the LUCA Status for Cooperatives has passed with the Conservation and Remediation obligation of 0 Ha.

However, based on the results of the verification of the LUCA document above, information was obtained that the scope of the LUCA study was 410.86 Ha or smaller than the total area in the Disclosure of Liability document of 2.54 Ha. This shows that there is an area of 2.54 Ha that has not been included in the LUCA study. In this regard, there was a change in the planned area of the scope of certification where out of the 413.4 Ha proposed, an area of 1.4 Ha was excluded from the planned scope of certification because the area was included in the Forest Area so that the total area of the scope of certification became 412 Ha. This information indicates that there is still a planned area of 1.4 hectares of certification scope that has not yet been included in the LUCA study.

Based on this, Cooperatives are encouraged to re-ensure that the total area of Disclosure of Liability and LUCA is appropriate/not smaller than the planned scope of certification if there are additional members in the audit process in the future. **(OFI)**.

MS-B		
Because there is no remediation area within the scope of the unit of certification, this indicator does not apply.		
	Status: Comply	
4.3		
New plantings of independent smallholders, since November 2019:		
<ul style="list-style-type: none"> • Do not replace any HCVs • Do not replace any HCS forests as defined by the simplified combined HCV-HCS approach • Are not on steep slopes (more than 25 degrees or as in NI) • Are not on peat areas of any depth. 		
Do any smallholders within the group have plans for new plantings of oil palm? If none, SKIP		
E, MS-A & MS-B		
Until the audit activity is carried out and refers to the Cooperative plan, up to the next 5 years there is no plan to plant new oil palm outside the current certification area. Based on the 2022 work plan document and the 5-year business plan owned by the Cooperative, it is known that until 2025 there are no plans for farmers to plant new palm oil. The results of interviews with the group manager and members of the Cooperative also stated the same thing, plans have not yet been made but will be reconsidered at the monthly meeting considering that some members have land with a type of cover in the form of rubber plantations, but the location is outside the scope of certification. So that the possibility of new planting may be allocated in the future work plan schedule according to needs. Regarding replanting in conservation areas, all members have signed a declaration not to carry out new plantings in HCV or HCS forests, on steep slopes or on peat. Apart from that, all members of the existing Cooperative do not have areas with these qualifications.		
	Status: Comply	
4.4		
Where smallholder plots exist on peat, subsidence and degradation of peat soils is minimized by use of best management practices.		
Do any smallholders within the group have existing plots on peat? If no, SKIP		
E, MS-A & MS-B		
Based on the results of the overlay with the Member Distribution Map and the Indicative Map for Cessation of Issuing New Permits for Primary Natural Forest and Peatland (PIPPIB) period 2 of 2022 with a scale of 1:225,000 (Decree of the Minister of Environment and Forestry Number SK.7594/MENLHK-PKTL /IPSDH/PLA.1/9/2022) information was obtained that none of the members' land was within the peat area.		
	Status: Comply	
4.5		
Plots on peat are replanted only on areas with low risk of flooding or saline intrusion as demonstrated by a risk assessment.		
Do any smallholders within the group have plans for replanting plots that are located on peat? If no, SKIP		
E, MS-A & MS-B		
Based on the results of the overlay with the Member Distribution Map and the Indicative Map for Cessation of Issuing New Permits for Primary Natural Forest and Peatland (PIPPIB) period 2 of 2022 with a scale of 1:225,000 (Decree of the Minister of Environment and Forestry Number SK.7594/MENLHK-PKTL /IPSDH/PLA.1/9/2022) information was obtained that none of the members' land was within the peat area.		
	Status: Comply	
4.6		
Fire is not used on the oil palm plot for preparing land or for pest control, nor open fire for waste management on the farm.		
E		
Koperasi Pemasaran Ikatan Petani Sawit Swadaya (KOIPESS) has committed not to use fire for land preparation, pest control, or waste management. This can be proven based on the results of document verification, interviews with cooperative management and farmers during field visits, it is known that all members have signed and acknowledged the membership requirements. All members before joining the Cooperative must complete the requirements to sign several documents as follows:		

- A letter stating the willingness of farmers to participate in RSPO certification as listed in attachment 2.
- Smallholder Declaration as referred to in Appendix 2
- Statement of commitment to RSPO Certification as listed in attachment 2.

The document explains the prohibition on the use of fire in oil palm plots to prepare land or for pest control, or open fires for waste management in agriculture, explained in the Statement of Commitment to RSPO Certification.

MS-A

As explained in the replanting program, Koperasi Pemasaran Ikatan Petani Sawit Swadaya (KOIPESS) does not have plans for replanting or area expansion in the near future, so the preparation of new land does not apply. Meanwhile, based on the results of interviews with the Plantation Service and the Village Representative, it is known that until now there has never been a fire in the plantation area.

Field observation results also show that there is no physical evidence of the use of fire (which was carried out after the feasibility assessment) for oil palm land preparation by smallholders. Farmers have completed training on Alternatives to land preparation without burning, Alternatives to using fire for pest control and fire prevention and how to handle and manage fires in communities and villages. Some evidence of socialization regarding the prohibition of burning is listed in the minutes of socialization activities related to HCV and HCS which were carried out on 18 September 2022 and 23 April 2022 as well as Good Agricultural Practices which were carried out on 19 May 2022 which were attended by all members.

Based on the review of the material provided during the training, information was obtained that calls for and prohibitions on the use of fire for pest control and land clearing had been conveyed, as well as alternatives such as using an Integrated Pest Management system, carrying out land clearing by mechanical means and so on.

MS-B

Based on the results of field observations on the plots of 20 samples, it was found that there were no indications of land clearing using fire or pest control using fire. All land clearing activities are carried out mechanically. The results of interviews with the Head of Bulu Bunggo Village also stated that it is not permissible to carry out land clearing activities through burning.

Status: Comply

4.7 Riparian buffer zones are identified and managed to ensure they are maintained and/or enhanced.

E
The cooperative has identified riparian buffer zones within the group with the result that there are no areas that enter the riparian zone in the members' land area. All group members represented from sample smallholders have also signed a declaration not to carry out new plantings in riparian areas which can be demonstrated in the commitment document to protect HCV and HCS forests through the precautionary practice approach of each member contained in the Statement Letter of RSPO Cooperative Certification Commitment that has been signed by each member.

MS-A

The cooperative has completed training on the management of the river basin buffer zone included in the HCV area training provided by the companion team from SPKS with trainers who are competent in their fields with evidence of socialization regarding the prohibition of chemical application and river riparian management listed in the minutes of activity results HCV and HCS socialization which took place on 18 September 2022 and 23 April 2022 as well as Good Agricultural Practices which took place on 19 May 2022 which was attended by all members.

Some of the planned activities are marking area boundaries, prevention and control of land fire hazards, area protection and flora and fauna species. Types of derivative activities that will be carried out include making signboards prohibiting land clearing by burning, installing signboards prohibiting spraying in total, signboards prohibiting hunting. The results of the interviews also showed that the farmers had knowledge of the management of the riparian buffer zone including an action plan to maintain and/or enhance the riparian buffer zone such as by not applying chemicals such as fertilizers and pesticides, or not replanting in the riparian area.

MS-B

The results of field observations obtained information that there were no plots of land in the river border area, but the cooperative

continued to manage the border area around the members' lands through installing signboards prohibiting the application of chemicals, prohibiting throwing garbage into rivers, and prohibiting burning land.

Status: Comply

4.8 Pesticides are used in ways that do not endanger health of workers, family, communities or the environment.

E
The KOIPESS has KOIPESS Decree No. 008/KOIPESS/XII/2021 which was issued on December 20, 2021, concerning commitment to good cultivation in plantation practices and not using WHO class 1A and 1B pesticides (paraquat ban) which explains that KOIPESS is committed to protecting and protecting HCV areas and not using WHO class 1A and 1B pesticides including paraquat.

In addition, each member has also signed a smallholder statement containing in letter B, namely committing to follow group certification in accordance with the RSPO Independent Smallholders Standard and comply with related principles, criteria and indicators including with regard to the commitment to gradually avoid paraquats and pesticides that are categorized as World Health Organization (WHO) in class 1A or 1B and which is listed in the Stockholm Convention or the Rotterdam Convention, for example, signed by a farmer with the initials I from Benggaulu Village and with the initials B from Bulu Bonggu Village on 10 October 2021.

MS-A

The KOIPESS also has a training program for members regarding Best Management Practices (BMP) for pesticides. The realization of this program has been carried out in stages, for example in 2022, namely on April 23, 2022, which was attended by 34 people, June 20 2022 which was attended by 57 people, June 21 2022 which was attended by 24 people, etc.

Based on the verification of the minutes of activity, it shows that the activity has been carried out in its entirety to all members which can be proven by the number of participants corresponding to the number of members. This proves that the cooperative has completed operational training, monitoring and plantation business planning.

Based on field visits and interviews with farmers, for example farmers from Bulu Bonggu Village and farmers from Benggaulu Village, it is known that personnel carry out weed control by mechanical means (grass clearing machines) so that by 2022 until the audit is carried out, cooperative members do not use chemicals in weed control and plant pests.

MS-B

The KOIPESS has KOIPESS Decree No. 008/KOIPESS/XII/2021 which was issued on December 20, 2021, concerning commitment to good cultivation in plantation practices and not using WHO class 1A and 1B pesticides (paraquat ban) which explains that KOIPESS is committed to protecting and protecting HCV areas and not using WHO class 1A and 1B pesticides including paraquat.

The KOIPESS also has a training program for members regarding the prohibition of the use of pesticides by pregnant and lactating women, and young workers as well as avoiding paraquats and pesticides that are categorized by WHO in class 1A or 1B or listed in the Stockholm Convention or the Rotterdam Convention. The realization of this program has been carried out in stages, for example in 2022, namely on April 23, 2022, which was attended by 34 people.

Status: Comply

4.9 The group and smallholders manage pests, diseases, weeds and invasive introduced species using appropriate techniques, including but not limited to Integrated Pest Management (IPM) techniques.

E
Not Applicable.

MS-A

The KOIPESS has mechanisms for implementing good plantation practices, including the following:

- SOP-ICS 001 concerning Harvest SOP.
- SOP-ICS 002 regarding SOP Pruning.
- SOP-ICS 008 regarding Fertilization SOP.
- SOP-ICS 010 regarding Spraying SOP.
- SOP-ICS 011 concerning SOP for Pest and Disease Control.

- KOIPESS SOP 005 regarding SOP Replanting.
- SOP KOIPESS 006 concerning Nursery SOPs.

In addition, each member has also signed a smallholder statement containing letter D point 14, which is a commitment to use best management practices, for example signed by farmers with the initials I from Benggaulu Village and with the initials B from Bulu Bonggu Village on October 10, 2021.

The KOIPESS also has a training program for members regarding Best Management Practices (BMP) for pesticides. The realization of this program has been carried out in stages, for example in 2022, namely on April 23, 2022, which was attended by 34 people, June 20 2022 which was attended by 57 people, June 21 2022 which was attended by 24 people, etc.

Based on the verification of the minutes of activity, it shows that the activity has been carried out in its entirety to all members which can be proven by the number of participants corresponding to the number of members. This proves that the cooperative has completed operational training, monitoring and plantation business planning.

Based on interviews with farmers, for example farmers from Bulu Bonggu Village and farmers from Benggaulu Village, it was found that personnel were familiar with the use of safe chemicals, Integrated Pest Management, and management of weeds and invasive species.

MS-B

Cooperatives in controlling pests, diseases and weeds can use mechanical, chemical, and biological methods. In the application of control in the field, it is known that the method used by the cooperative is by mechanical means (using a tripe machine) with the aim of not using chemicals in controlling pests, diseases, and weeds. In addition, the cooperative also plans to plant Turnera as a host plant for natural predators of plant pests.

Therefore, cooperatives have the opportunity to realize Turnera planting in the areas of cooperative members. **(OFI)**

Status: Comply

3.2 Conformity Checklist of Certificate and Trademark Use

1.	Evidence of permission or approval certificate and trademark from Certification Body which submitted by Client.
MS-B	Koperasi Pemasaran Ikatan Petani Sawit Swadaya (KOIPESS) does not use RSPO trademark.
	Status: Comply
2.	Implementation of certificate and trademark used by Client comply with size and type (shape) against Guideline of trademark Use
MS-B	Koperasi Pemasaran Ikatan Petani Sawit Swadaya (KOIPESS) does not use RSPO trademark.
	Status: Comply
3.	Implementation of Certificate and Trademark is not used on product
MS-B	Koperasi Pemasaran Ikatan Petani Sawit Swadaya (KOIPESS) does not use RSPO trademark.
	Status: Comply
4.	Controlling of Certificate and Trademark, including withdrawing inappropriate trademark.
MS-B	Koperasi Pemasaran Ikatan Petani Sawit Swadaya (KOIPESS) does not use RSPO trademark.
	Status: Comply

3.3. Identification of Findings, Corrective Action, Observations, Opportunity for Improvement and Noteworthy Positive Components.

3.3.1 Identification of Findings, Corrective Actions and Observations at MS-B Assessment

NCR No.	:	2023.01	Issued by	:	Kiki Fadli
Date Issued	:	1 March 2023	Time Limit	:	February 29, 2024
NC Grade	:	Major	Date of Closing	:	2 May 2023
Standard Ref. & Requirement	:	C.1.1 MS-A: The group business plan is implemented and reviewed at least annually.			
Evidence observed (filled by auditor): <ul style="list-style-type: none"> Cooperatives have SOP for Monitoring Member Assessment with code No. SOP ICS 22 which explains in point 1 that monitoring for members is carried out every month at farmer group meetings to monitor harvest records, fertilization, and others. The cooperative shows the business plan listed in the estimated production for March 2023 – February 2024, but the cooperative has not been able to show the annual group business plan for the 2022 period which includes production estimates, income based on historical records and expansion plans and has been reviewed. 					
Non-Conformance Description (filled by auditor): Cooperatives have not been able to show an annual group business plan for the 2022 period which includes production estimates, income based on historical records and expansion plans and has been reviewed at farmer group meetings every month.					
Root Cause Analysis (filled by organization audited): The group's business plan and its evaluation could not be shown due to the ignorance of the cooperative management and the ICS team in making the business plan and its evaluation.					
Correction (filled by organization audited): <ul style="list-style-type: none"> Providing PNC RSPO socialization (related to business plans and evaluation) to the management of Cooperatives and ICS together with farmers. Shows the 2022 group business plan and its evaluation. 					
Corrective Action (filled by organization audited): <ul style="list-style-type: none"> Provide socialization and understanding regarding standards for independent smallholders Demonstrate PIC in monitoring business plan and its evaluation, namely ICS Manager, Mr. Muhlis Ludin 					
Assessor Evaluation and Conclusion (filled by auditor): Verification date March 29, 2023 The company provided evidence in the form of Documentation of the ICS meeting regarding the 2022 work program on March 14, 2023 which was attended by 27 people. However, the company has not been able to provide evidence and explanation regarding: <ul style="list-style-type: none"> At the root of the problem → Could you please explain what the cooperative management and the ICS team did not know about? On corrective action → Please review the corrective action/correction again, adjusting to the root of the problem. On corrective action → Please show the annual group business plan for the 2022 period and its evaluation. On corrective action → Please show the PIC in making the annual group business plan and its evaluation activities. Based on this, the discrepancy in this indicator has not been fulfilled. Verify May 2, 2023 The company shows evidence of improvement in the form of: <ul style="list-style-type: none"> The 2022 group business plan and its evaluation which was carried out on April 29, 2023. 					

- RSPO PNC socialization (related to business plans and evaluation) to Cooperative and ICS management together with farmers on 14 March 2023.
- Determine the PIC in preparing the annual group business plan and its evaluation activities which are the duties of the ICS manager listed in the main duties and functions document which was passed on February 22, 2023.

Based on this, the discrepancy on this indicator is fulfilled.

Follow up on next audit (filled by auditor):

Verified by : Kiki Fadli

NCR No.	: 2023.02	Issued by	: Kiki Fadli
Date Issued	: 1 March 2023	Time Limit	: February 29, 2024
NC Grade	: Major	Date of Closing	: 2 May 2023
Standard Ref. & Requirement	C.2.1 MS-A: The group management plan is implemented and reviewed at least annually.		
Evidence observed (filled by auditor): Cooperatives show the group management plan listed in the work program for the period January 2022 - January 2023 which includes a training plan and fulfillment of the legality of members and cooperatives, but cooperatives have not been able to show that the group management plan has been reviewed for implementation at least annually.			
Non-Conformance Description (filled by auditor): The cooperative has not been able to demonstrate that the group management plan for the period January 2022 – January 2023 has been reviewed for implementation at least annually.			
Root Cause Analysis (filled by organization audited): Not yet able to show because the management of the cooperative does not know that an evaluation or review must be carried out every year.			
Correction (filled by organization audited): <ul style="list-style-type: none"> • Show evidence of group management plan evaluation for the period January 2022 – January 2023 (document attached). • Conduct PNC socialization related to the evaluation of group management plans every year to ICS managers, administrators and farmers 			
Corrective Action (filled by organization audited): <ul style="list-style-type: none"> • Organized a meeting of cooperative management and the ICS team. • Demonstrate PIC in monitoring the group management plan and its evaluation, namely the ICS Manager, Bro. Muhlis Ludin 			
Assessor Evaluation and Conclusion (filled by auditor): Verification date March 29, 2023 The company provides evidence in the form of Documentation of the group management plan meeting for the period January 2022 – January 2023 on March 14, 2023 which was attended by 27 people. However, the company has not been able to provide evidence and explanation regarding: <ul style="list-style-type: none"> • In corrective action → Please show the results of the evaluation of the group management plan for the period January 2022 – January 2023. • In corrective action → Please show corrective action, due to the ignorance of the cooperative management that an evaluation must be carried out every year for the group management plan. • On corrective action → Please show PIC to evaluate the group management plan every year. 			

Based on this, the discrepancy in this indicator has not been fulfilled.

Verify May 2, 2023

The company shows evidence of improvement in the form of:

- Results of the evaluation of the group management plan for the period January 2022 – January 2023 which was carried out on March 15, 2023.
- RSPO PNC socialization related to evaluation of group management plans every year to ICS managers, administrators and smallholders on 14 March 2023.
- Establish a PIC in monitoring the group management plan and its evaluation which is the task of the ICS manager listed in the main duties and functions document which was ratified on February 22, 2023.

Based on this, the discrepancy on this indicator is fulfilled.

Follow up on next audit (filled by auditor):

Verified by : **Kiki Fadli**

NCR No.	: 2023.03	Issued by	: Haikal Ramadhan Kharismansyah
Date Issued	: 1 March 2023	Time Limit	: February 29, 2024
NC Grade	: Major	Date of Closing	: 9 May 2023
Standard Ref. & Requirement	D.3.1 E: The group and group manager have agreed on how the premium will be used and this agreement is recorded and communicated to group members. The amount/value, premium, and time of premium payment are conveyed clearly and transparently to all group members. Premiums paid to members are recorded at each stage and premiums are paid on time and well received by members.		

Evidence observed (filled by auditor):

Standard Operational Procedure for Sharing RSPO Credit Document No. KOIPESS/SOP-PIR/ICS/020, among other things, informs the allocation of distribution of funds for the sale of certificates as follows:

- 25% of sales proceeds are allocated for the 1st year Surveillance Audit.
- 1% contribution to the village
- 20% of sales proceeds are allocated for the operational costs of ICS management.
- 6% of sales proceeds are allocated to Cooperative cash.
- 48% is distributed to cooperative members according to the needs and agreement of the members discussed in the forum/joint deliberation.

The results of interviews with representatives of KOIPESS members, representatives of cooperative management, and representatives of the ICS team did not provide clear information regarding understanding and agreement regarding the distribution of incentive allocations as stated in the SOP.

Even though it has been stated in the SOP until the assessment is completed there is not enough evidence of an agreement on how to use the premium or the distribution that has been included in the procedure is the result of an agreement that is known and understood by all members.

Non-Conformance Description (filled by auditor):

The cooperative has not been able to show sufficient evidence that the method of using the premium has been agreed upon and conveyed to all members in a transparent manner, including the procedure/time of payment and the amount of the premium value.

Root Cause Analysis *(filled by organization audited):*

Not all farmers/members have participated in the socialization of premium distribution

Correction *(filled by organization audited):*

- Holding meetings with farmers, cooperative management, ICS and companion organizations.
- Proof of the report having been agreed upon by the attached Cooperative SOP.

Corrective Action *(filled by organization audited):*

- Providing outreach to farmers regarding premiums, estimates of the amount to be received by cooperatives and members.
- In the future the cooperative management and ICS will take documentation of every activity, maximize the role of farmer groups to mobilize members, and ensure members sign attendance.

Assessor Evaluation and Conclusion *(filled by auditor):*

The Association shows evidence of improvement in the form of:

1. Dissemination of premium distribution (not clearly stated regarding the minutes, number of participants, and implementation time)
2. Standard Operational Procedure for Sharing RSPO Credit Document No. KOIPESS/SOP-PIR/ICS/020

However, it does not show:

1. Documented evidence that the distribution of the use of the premium has been agreed upon by each member or a representative appointed by the member (representation showing all members)
2. Plans for dissemination/regular meetings with parties and members so that all information/agreement can be conveyed and understood by all members

In addition, additional information is also needed in the root cause analysis, correction, and corrective actions

Auditors' Conclusion:

The non-conformity is declared not fulfilled

Verification date May 9, 2023

The Association shows additional evidence of improvement in the form of:

1. Documented evidence that the distribution of the use of the premium has been agreed upon by each member or a representative appointed by the member (representation showing all members)
2. Plans for outreach/regular meetings with parties and members
3. It has also added information in the root cause analysis and correction section

Auditors' Conclusion:

Based on the root cause analysis, correction and corrective action, the nonconformity is declared fulfilled

Follow up on next audit *(filled by auditor):*

Verified by : **Haikal R K**

NCR No.	: 2023.04	Issued by	: Kiki Fadli
Date Issued	: 1 March 2023	Time Limit	: February 29, 2024
NC Grade	: Major	Date of Closing	: 2 May 2023
Standard Ref. & Requirement	: 3.3 MS-A:		

Workers receive payment as expected and agreed upon, at least in accordance with the Minimum Wage provided for by applicable law (excluding overtime premiums), and without discrimination against vulnerable groups, including women.

Evidence observed (filled by auditor):

- Cooperatives have KOIPESS Decree No. 006/KOIPESS/XII/2021 which was issued on December 20, 2021 concerning payment of wages which explains that cooperative members are committed to paying wages to workers referring to the provincial minimum wage.
- A statement letter from the smallholders signed by each member of the cooperative in point D point 4, namely a commitment to pay the minimum wage in accordance with applicable regulations.
- The cooperative shows a work contract agreement between farmers and workers on December 24, 2022 which explains wages, namely:
 - Minimum harvest of IDR 120,000/day.
 - Average pruning of IDR 2,500/principal.
 - Fertilizer IDR 10,000/bag.
- The cooperative shows a farmer's record book, for example farmers with the initials AS who employ workers with the initial A and farmers with the initial S who employ workers with the initial H. It is known that in 2022 there will be jobs such as harvesting, fertilizing and pruning, but it cannot be shown that workers receive payment as agreed.

Non-Conformance Description (filled by auditor):

The cooperative has not been able to show that workers receive payments according to what was agreed.

Root Cause Analysis (filled by organization audited):

Payment of wages for farmers who employ people in the fields has been carried out, but due to the lack of understanding of the cooperative management and farmers, the payments do not use evidence in the form of receipts.

Correction (filled by organization audited):

Koreksi (dilengkapi oleh organisasi yang diaudit):

- Providing understanding to farmers and administrators regarding the payment of workers' wages
- Conducting procurement of receipts
- Demonstrate employment socialization to administrators and farmers

Corrective Action (filled by organization audited):

- Farmers make payment of workers' wages recorded in the receipt as evidence.
- There is a mechanism/procedure related to documentation of payment of wages to workers listed in the SOP (document attached)
- Indicate the PIC in filing / collecting proof of payment of wages to workers, namely the ICS Manager, Mr. Muhlis Ludin.

Assessor Evaluation and Conclusion (filled by auditor):

Verification date March 29, 2023

The company shows proof of receipt of payment of workers' wages, for example with the initials HI on 28 February 2023.

However, the company has not been able to provide evidence and explanation regarding:

- In corrective action → Please show documentation of understanding to farmers and management regarding payment of workers' wages.
- In corrective action → Please show the mechanism/procedure related to the documentation of payment of wages to workers.
- On corrective action → Please show the PIC in filing/collecting proof of payment of wages to workers.

Based on this, the discrepancy in this indicator has not been fulfilled.

Verify May 2, 2023

The company shows evidence of improvement in the form of:

- Show documentation of understanding to farmers and administrators regarding the payment of workers' wages on March 15, 2023.

- Demonstrate mechanisms/procedures related to documentation of payment of wages to workers listed in SOP for Land Workers No. KOIPESS/SOP-AI/ICS/027 came into effect on March 22, 2023 which explains that every farmer who uses labor, in paying wages for each activity, farmers carry out documentation in the form of receipts signed by farmers and workers.
- Establish a PIC in filing / collecting proof of payment of wages to workers who are the duties of the ICS manager listed in the main duties and functions document which was passed on February 22, 2023.

Based on this, the discrepancy in this indicator is declared fulfilled.

Follow up on next audit (filled by auditor):

Verified by : **Kiki Fadli**

3.3.3. Opportunity for Improvement

No	Ref. Std.	Description
1	A.2.3	<p>MS-B: All members attended training and were able to prove their understanding of the Independent Smallholders Standard. group management. and certification requirements. including understanding of PPT, HCV, environmental protection, social welfare of workers, and business operations.</p> <p>Based on the results of field observations and Focus Group Discussions conducted with 20 sample members, it was shown that all samples stated that they had received training and socialization related to HCV, BMP, OHS and others. However, not all sample members could explain their implementation in the field. The results of verification of the socialization evidence documents also show that not all members have participated in the training and outreach activities.</p> <p>Related to this, the cooperative and ICS explained that socialization and training were given in stages with the following stages:</p> <ul style="list-style-type: none"> • Head of Cooperative and Head of ICS conduct training • The Head of the Cooperative and the Head of the ICS conveyed the results of the training they received to 18 members of the ICS through outreach activities. • ICS members then conveyed to the 7 farmer group leaders the information they had obtained from the outreach activities. • The head of the farmer group then conveys this to all of their respective members. <p>However, documentation of the activities was only carried out up to the socialization stage to ICS members and only a few members, so there was no evidence that all members had participated in the socialization activities. Based on this, the cooperative has the opportunity to make improvements in documenting activities so that it can prove that all members of the cooperative have received the same socialization and training.</p>
2	2.1	<p>E: Planters provide information regarding the coordinates or map of their plots of land along with proof of ownership or rights to utilize the land. (See Indicator 1.1 E and Appendix 2).</p> <p>MS-A: Planters can prove ownership of legality or indigenous people's rights and/or customary rights to use the land or show that the planters are already in the process of legalizing these rights.</p> <p>MS-A Notes: Independent smallholders are encouraged to improve the legality status of their land with plans to have SHM and make STDB including SPPL.</p> <p>MS-B: Farmers' plots of land are clearly demarcated and maintained. and growers only operate within these limits.</p> <p>Based on the results of the document review, it is known that out of 234 KOIPESS members, there are 13 members whose land ownership status is still in the form of SKT. In the RSPO principles and criteria guidelines for independent smallholders it is stated that independent smallholders are encouraged to improve the legality status of their land by planning to own SHM. Based on this, KOIPESS has the opportunity to develop a plan and continue to show positive progress to improve the legal status of land so that in the end all members have land legality in the form of SHM.</p>
3	3.5	<p>MS-B: Workers, including smallholders' family members, have access to safe working conditions and</p>

No	Ref. Std.	Description
		<p>facilities that include:</p> <ul style="list-style-type: none"> • Safe and adequate housing, if needed; • Access to Accident First Aid (P3K) supplies; • Health and safety equipment, including minimum Personal Protective Equipment (PPE) if appropriate for the type of work; • Availability of proper drinking water; And • Access to toilets. <p>The cooperative shows a work contract agreement between farmers and workers on December 24, 2022 which explains in article 4 that both parties (workers) use personal protective equipment at work. A smallholder statement signed by each member of the cooperative in letter D point 6, namely commitment to provide safe working conditions and facilities. The cooperative shows a list of personnel working in the area of cooperative members as many as 14 people as well as plans to procure OHS facilities and infrastructure such as helmets, boots, first aid and others which are planned to be fulfilled in 2023.</p> <p>In this regard, cooperatives have the opportunity to document the provision and use of OHS facilities and infrastructure to farmers and workers in plantation management activities.</p>
4	4.2	<p>If the existing smallholder plots have been planted and cleared after November 2005 or are in areas identified as HCS forest after November 2019 to the Eligibility period. then an appropriate remediation and compensation (RaCP) process will apply to growers under LUCA.</p> <p>MS-A: Group members developed a plan to identify the maximum area of remediation on site for HCV areas lost since November 2005, and HCS forest lost since November 2019 through a participatory process, and this plan was submitted to the RSPO.</p> <p>The cooperative has been able to show evidence of communication with RSPO regarding Disclosure of Liability via email. On 3 August 2022, the RSPO approved the Disclosure of Liability document with the scope written in the email namely "234 Smallholders (320 Plot) with a total managed area of 413.4 Ha" and recommended to proceed to the LUCA study stage. On 9 September 2022, the cooperative sent the LUCA document to RSPO and on the same day, the RSPO responded with the conclusion that the LUCA Status for Cooperatives has passed with the Conservation and Remediation obligation of 0 Ha.</p> <p>However, based on the results of the verification of the LUCA document above, information was obtained that the scope of the LUCA study was 410.86 Ha or smaller than the total area in the Disclosure of Liability document of 2.54 Ha. This shows that there is an area of 2.54 Ha that has not been included in the LUCA study. In this regard, there was a change in the plan for the area of the scope of certification where out of the 413.4 Ha proposed, an area of 1.4 Ha was excluded from the planned scope of certification because the area was included in the Forest Area so that the total area of the scope of certification became 412 Ha. This information indicates that there is still a planned area of 1.4 hectares of certification scope that has not yet been included in the LUCA study.</p> <p>Based on this, Cooperatives are encouraged to re-ensure that the total area of Disclosure of Liability and LUCA is appropriate/not smaller than the planned scope of certification if there are additional members in the audit process in the future.</p>
5	4.9	<p>Groups and growers manage pests, diseases, weeds and invasive introduced species using appropriate techniques, including (but not limited to) Integrated Pest Management (IPM) techniques.</p> <p>MS-B: Groups and farmers maximize the use of IPM approaches to minimize the use of pesticides and</p>



No	Ref. Std.	Description
		<p>herbicides in their plantations.</p> <p>Cooperatives in controlling pests, diseases and weeds can use mechanical, chemical and biological methods. In the application of control in the field, it is known that the method used by the cooperative is by mechanical means (using a tripe machine) with the aim of not using chemicals in controlling pests, diseases and weeds. In addition, the cooperative also plans to plant <i>turnera</i> as a host plant for natural predators of plant pests.</p> <p>Therefore, cooperatives have the opportunity to realize <i>turnera</i> planting in the areas of cooperative members.</p>

3.3.4. Noteworthy Positive Components

No	Description
1	Have a commitment to implementing the principles of sustainable palm oil management
2	Good coordination and presentation of documents by the companion team
3	The high enthusiasm of members to take part in the certification stages

3.4 Summary of Arising Issues from Public and Auditor Verification.

Public Issues (Institution/ NGO/Community)	Auditor Verification
Agriculture Agency of Pasangkayu Regency. <ul style="list-style-type: none"> Cooperatives have obtained STDB for members to be certified. Good communication from smallholders and there are no negative issues from the farmer association. 	<p>There are no negative issues that need further clarification</p>
Environment Agency of Pasangkayu Regency. <ul style="list-style-type: none"> The company has obtained an SPPL for members to be certified. Good communication from smallholders and there are no negative issues from the farmer association. 	<p>There are no negative issues that need further clarification</p>
Bulu Bonggu Village <ul style="list-style-type: none"> There are no land conflicts, clearing by burning and reports of negative issues from the formation of farmer associations. Village officials support all activities of smallholders and members of the community find it helpful to know the best plantation management. Hoping for the addition of new members from the community who are not yet members. 	<p>There are no negative issues that need further clarification</p>
Benggaulu Village <ul style="list-style-type: none"> There are no land conflicts, clearing by burning and reports of negative issues from the formation of farmer associations. Village officials support all activities of smallholders and members of the community find it helpful to know the best plantation management. Hoping for the addition of new members from the community who are not yet members. 	<p>There are no negative issues that need further clarification</p>

4.0	CERTIFIED ORGANISATION'S ACKNOWLEDGEMENT OF INTERNAL RESPONSIBILITY
4.1	Formal Sign-off of Assessment Findings
	<p>Hereunder sign by management representative from inspected company to acknowledge a field assessment and agree for all content explained in this assessment report, included of non-compliance findings.</p> <p>Signed on behalf of:</p> <div style="display: flex; justify-content: space-around; align-items: flex-end; margin-top: 100px;"> <div style="text-align: center;"> <p>Koperasi Pemasaran Ikatan Petani Sawit Swadaya (KOIPESS) Group Manager</p>  <p><u>Amran</u> Tuesday, 09 May 2023</p> </div> <div style="text-align: center;"> <p>Mutuagung Lestari Lead Auditor</p>  <p><u>Haikal Ramadhan Kharismansyah</u> Tuesday, 09 May 2023</p> </div> </div>

Appendix 1. List of Stakeholder Contacted in the RSPO Certification Process

No	Institution/ NGO/ Community	Address	Phone/ Email	Type of Communication	Date of Contact	Response	
						Yes	No
1	Environment Agency	Pasangkayu Regency	-	Telephone	28 February 2023	√	
2	Plantation Agency	Pasangkayu Regency	-	Telephone	28 February 2023	√	
3	Head of Bulu Bonggu Village	Pasangkayu Regency	-	Direct Interview	27 February 2023	√	
4	Head of Benggaulu Village	Pasangkayu Regency	-	Direct Interview	27 February 2023	√	
5	WALHI	Jakarta	info@walhi.or.id	Questionnaire	21 February 2023		√
6	AMAN	Jakarta	informasi@walhi.or.id	Questionnaire	21 February 2023		√
7	WWF Indonesia	Jakarta	wwf-indonesia@wwf.or.id	Questionnaire	21 February 2023		√
8	Sawit Watch	Jakarta	info@sawitwatch.or.id	Questionnaire	21 February 2023		√
9	Interviews with 10 farmers in each village (Bulu Bonggu Village and Benggaulu Village)	Pasangkayu Regency	-	Direct Interview	27 February 2023	√	

Appendix 2. Assessment Program

DATE	27 February – 1 March 2023	
TIME LINE	PROCESS / THINGS TO BE AUDITED	AUDITOR
Monday, February 27, 2023		
02.35 – 06.30	• Jakarta → Palu	HAI/ART/KID
07.00 – 13.00	• Palu → Lokasi audit	HAI/ART/KID
13.00 – 14.00	Break	HAI/ART/KID
14.00 – 15.00	Opening Meeting Auditor Team Speech (Introduction, Audit Objective, Audit Scope, Audit Plan Discussion, Determine of Audit Sample, Transparency and Confidentiality Clarification)	HAI/ART/KID
15.00 – 16.00	Basic info verification Document review	HAI/ART/KID
16.00 – 17.00	Field observation plan	HAI/ART/KID
Tuesday, 28 February 2023		
08.00 – 10.00	Stakeholders' consultation by phone to related agencies. Public consultation with village officials around the audit site Field Visits to Operational Activities and Supporting Facilities	KID ART/HAI HAI/ART/KID
10.0 – 12.00	Document verification	HAI/ART/KID
12.0 – 14.00	Break	HAI/ART/KID
14.00 – 16.30	Document verification Continuing Field Visits and interview to land owner	HAI/ART/KID
16.30 – 17.00	Daily progress	HAI/ART/KID
Wednesday, March 01, 2023		
08.0 – 12.00	Document Verification	HAI/ART/KID
12.00 – 14.00	Break	HAI/ART/KID
14.00 – 15.00	Internal meeting auditor team	HAI/ART/KID
15.00 – 16.00	Closing meeting	HAI/ART/KID
18.00 – 23.00	Pasang Kayu District → KSU Malata (Mamuju Tengah) → Lodging	HAI/ART/KID

Appendix 3. Smallholder Data

No.	No. ID	No. Of member	Smallholder Name	Planting Years	Location	Coordinate		Area		Actual FFB	Yield	Projection FFB	Yield	Date of Joining	Date of Leaving
					Village	Latitude (S)	Longitude (E)	Total Area	Production Area	production (MT/Year)	(MT/Ha/ Year)	Production (MT/Year)	(MT/ Ha/ Year)		
Dapurang Sub District, Sulawesi Barat, Indonesia															
1	KOIPESS-01-A-001	1	SANNANG 1	2014	Bulu Bonggu	1° 40' 42.567"	119° 26' 55.105"	0.39	0.39	8.70	22.31	9.13	23.41	17-Jul-2022	-
2	KOIPESS-01-B-001		SANNANG 2	2016	Bulu Bonggu	1° 41' 36.898"	119° 25' 52.915"	0.16	0.16	4.90	30.63	5.14	32.13	17-Jul-2022	-
3	KOIPESS-01-A-002	2	JALALUDDIN	2016	Bulu Bonggu	1° 41' 12.159"	119° 25' 56.018"	1.01	1.01	12.48	12.36	13.09	12.96	17-Jul-2022	-
4	KOIPESS-01-A-003	3	SARIPUDDIN A	2012	Bulu Bonggu	1° 41' 5.749"	119° 26' 16.688"	1.18	-	-	-	0.00	-	17-Jul-2022	-
5	KOIPESS-01-A-004	4	MUHARDI 1	2009	Bulu Bonggu	1° 41' 40.040"	119° 26' 26.800"	0.89	0.89	18.97	21.31	19.90	22.36	17-Jul-2022	-
6	KOIPESS-01-B-004		MUHARDI 2	2020	Bulu Bonggu	1° 42' 3.571"	119° 26' 11.178"	1.95	-	-	-	0.00	-	17-Jul-2022	-
7	KOIPESS-01-A-005	5	SAPRI	2012	Bulu Bonggu	1° 42' 12.580"	119° 26' 37.893"	1.66	1.66	28.22	17.00	29.60	17.83	17-Jul-2022	-
8	KOIPESS-01-A-006	6	RUTMAWATI	2009	Bulu Bonggu	1° 40' 55.441"	119° 26' 55.290"	1.77	1.77	35.08	19.82	36.80	20.79	17-Jul-2022	-
9	KOIPESS-01-A-007	7	MUH SARDIKIN HAFID	2012	Bulu Bonggu	1° 41' 40.148"	119° 26' 11.276"	0.47	0.47	10.00	21.28	10.49	22.32	17-Jul-2022	-
10	KOIPESS-01-A-008	8	SI'DA 1	2009	Bulu Bonggu	1° 40' 57.828"	119° 26' 48.765"	1.76	1.76	34.50	19.60	36.19	20.56	17-Jul-2022	-
11	KOIPESS-01-B-008		SI'DA 2	2011	Bulu Bonggu	1° 40' 59.211"	119° 26' 30.300"	0.64	0.64	12.92	20.19	13.55	21.17	17-Jul-2022	-
12	KOIPESS-01-C-008		SI'DA 3	2013	Bulu Bonggu	1° 41' 26.475"	119° 26' 30.300"	0.15	0.15	4.88	32.53	5.12	34.13	17-Jul-2022	-
13	KOIPESS-01-A-009	9	ABD RAHMAN A1	2014	Bulu Bonggu	1° 41' 43.114"	119° 26' 2.744"	0.17	0.17	5.13	30.18	5.38	31.65	17-Jul-2022	-
14	KOIPESS-01-B-009		ABD RAHMAN A2	2012	Bulu Bonggu	1° 41' 42.904"	119° 26' 4.422"	0.24	0.24	6.18	25.75	6.48	27.00	17-Jul-2022	-
15	KOIPESS-01-C-009		ABD RAHMAN A3	2008	Bulu Bonggu	1° 41' 54.515"	119° 26' 14.812"	0.16	0.16	5.48	34.25	5.75	35.94	17-Jul-2022	-
16	KOIPESS-01-D-009		ABD RAHMAN A4	2012	Bulu Bonggu	1° 41' 45.791"	119° 26' 1.938"	0.71	0.71	13.81	19.45	14.49	20.41	17-Jul-2022	-
17	KOIPESS-01-E-009		ABD RAHMAN A5	2017	Bulu Bonggu	1° 41' 29.754"	119° 25' 54.662"	0.97	0.97	11.05	11.39	11.59	11.95	17-Jul-2022	-
18	KOIPESS-01-A-010	10	ANWAR ANAS 1	2017	Bulu Bonggu	1° 41' 46.160"	119° 26' 4.193"	1.10	-	-	-	0.00	-	17-Jul-2022	-
19	KOIPESS-01-B-010		ANWAR ANAS 2	2017	Bulu Bonggu	1° 41' 46.092"	119° 25' 59.808"	0.62	-	-	-	0.00	-	17-Jul-2022	-
20	KOIPESS-01-A-011	11	BAHARUDDIN A1	2017	Bulu Bonggu	1° 41' 29.481"	119° 25' 51.675"	1.02	1.02	11.32	11.10	11.87	11.64	17-Jul-2022	-
21	KOIPESS-01-B-011		BAHARUDDIN A2	2012	Bulu Bonggu	1° 41' 5.443"	119° 26' 30.194"	1.42	1.42	24.66	17.37	25.87	18.22	17-Jul-2022	-
22	KOIPESS-01-C-011		BAHARUDDIN A3	2012	Bulu Bonggu	1° 41' 2.613"	119° 26' 31.820"	0.28	0.28	7.26	25.93	7.62	27.21	17-Jul-2022	-
23	KOIPESS-01-A-012	12	MUHLIS LUDDIN 1	2011	Bulu Bonggu	1° 41' 0.939"	119° 26' 27.451"	0.66	0.66	13.07	19.80	13.71	20.77	17-Jul-2022	-
24	KOIPESS-01-B-012		MUHLIS LUDDIN 2	2012	Bulu Bonggu	1° 41' 1.873"	119° 26' 23.658"	1.17	1.17	20.47	17.50	21.47	18.35	17-Jul-2022	-
25	KOIPESS-01-A-013	13	JAHAH 1	2012	Bulu Bonggu	1° 41' 23.029"	119° 26' 28.634"	0.82	0.82	15.12	18.44	15.86	19.34	17-Jul-2022	-
26	KOIPESS-01-B-013		JAHAH 2	2012	Bulu Bonggu	1° 41' 47.076"	119° 26' 13.794"	0.93	0.93	16.63	17.88	17.44	18.75	17-Jul-2022	-
27	KOIPESS-01-C-013		JAHAH 3	2013	Bulu Bonggu	1° 40' 57.632"	119° 26' 43.930"	0.55	0.55	11.06	20.11	11.60	21.09	17-Jul-2022	-
28	KOIPESS-01-A-014	14	NASRUDDIN 1	2012	Bulu Bonggu	1° 41' 26.266"	119° 26' 31.000"	1.87	1.87	31.30	16.74	32.83	17.56	17-Jul-2022	-
29	KOIPESS-01-B-014		NASRUDDIN 2	2012	Bulu Bonggu	1° 40' 58.261"	119° 26' 22.709"	1.95	1.95	32.08	16.45	33.65	17.26	17-Jul-2022	-
30	KOIPESS-01-C-014		NASRUDDIN 3	2013	Bulu Bonggu	1° 41' 53.503"	119° 26' 21.598"	1.11	1.11	19.19	17.29	20.13	18.14	17-Jul-2022	-
31	KOIPESS-01-A-015	15	HASANUDDIN A1	2015	Bulu Bonggu	1° 41' 23.138"	119° 26' 32.151"	0.34	0.34	6.16	18.12	6.46	19.00	17-Jul-2022	-
32	KOIPESS-01-B-015		HASANUDDIN A2	2015	Bulu Bonggu	1° 40' 55.218"	119° 26' 34.433"	2.50	-	-	-	0.00	-	17-Jul-2022	-
33	KOIPESS-01-A-016	16	RUSLI	2017	Bulu Bonggu	1° 41' 1.964"	119° 26' 36.486"	2.12	-	-	-	0.00	-	17-Jul-2022	-
34	KOIPESS-01-A-017	17	RAMANG	2013	Bulu Bonggu	1° 41' 12.549"	119° 26' 21.598"	1.94	1.94	31.89	16.44	33.45	17.24	17-Jul-2022	-

No.	No. ID	No. Of member	Smallholder Name	Planting Years	Location	Coordinate		Area		Actual FFB	Yield	Projection FFB	Yield	Date of Joining	Date of Leaving
					Village	Latitude (S)	Longitude (E)	Total Area	Production Area	production (MT/Year)	(MT/Ha/ Year)	Production (MT/Year)	(MT/ Ha/ Year)		
Dapurang Sub District, Sulawesi Barat, Indonesia															
35	KOIPSS-01-A-018	18	ABD ASIZ A	2013	Bulu Bonggu	1° 41' 36.352"	119° 26' 28.939"	1.99	-	-	-	0.00	-	17-Jul-2022	-
36	KOIPSS-01-A-019	19	NURDIN 1	2015	Bulu Bonggu	1° 41' 9.133"	119° 26' 13.911"	2.19	-	-	-	0.00	-	17-Jul-2022	-
37	KOIPSS-01-B-019		NURDIN 2	2018	Bulu Bonggu	1° 41' 5.357"	119° 26' 24.310"	0.32	-	-	-	0.00	-	17-Jul-2022	-
38	KOIPSS-01-A-020	20	SYAMSUDDIN A	2019	Bulu Bonggu	1° 41' 46.959"	119° 26' 25.126"	1.09	-	-	-	0.00	-	17-Jul-2022	-
39	KOIPSS-01-A-021	21	MIA AUDINA 1	2014	Bulu Bonggu	1° 41' 36.593"	119° 26' 24.260"	1.06	1.06	18.04	17.02	18.92	17.85	17-Jul-2022	-
40	KOIPSS-01-B-021		MIA AUDINA 2	2014	Bulu Bonggu	1° 41' 47.120"	119° 26' 10.221"	0.63	0.63	11.60	18.41	12.17	19.32	17-Jul-2022	-
41	KOIPSS-01-A-022	22	SYAHRIL A	2012	Bulu Bonggu	1° 41' 12.574"	119° 26' 15.301"	1.63	1.63	27.52	16.88	28.87	17.71	17-Jul-2022	-
42	KOIPSS-01-A-023	23	YUSUP	2009	Bulu Bonggu	1° 41' 3.755"	119° 25' 52.288"	2.11	2.11	41.47	19.65	43.50	20.62	17-Jul-2022	-
43	KOIPSS-01-A-024	24	ARIFUDDIN A	2020	Bulu Bonggu	1° 41' 39.176"	119° 26' 3.329"	1.30	-	-	-	0.00	-	17-Jul-2022	-
44	KOIPSS-01-A-025	25	ASIS	2012	Bulu Bonggu	1° 43' 23.520"	119° 26' 12.961"	0.83	0.83	15.53	18.71	16.29	19.63	17-Jul-2022	-
45	KOIPSS-01-A-026	26	NURMALIA	2015	Bulu Bonggu	1° 41' 47.834"	119° 26' 21.669"	0.43	0.43	7.40	17.21	7.76	18.05	17-Jul-2022	-
46	KOIPSS-01-A-027	27	HASANUDDIN B	2014	Bulu Bonggu	1° 40' 46.267"	119° 26' 38.384"	0.62	0.62	11.84	19.10	12.42	20.03	17-Jul-2022	-
47	KOIPSS-01-A-028	28	BAHARUDDIN. S	2019	Bulu Bonggu	1° 41' 46.622"	119° 26' 29.907"	0.37	-	-	-	0.00	-	17-Jul-2022	-
48	KOIPSS-01-A-029	29	MUSLIMIN	2014	Bulu Bonggu	1° 40' 39.873"	119° 26' 38.596"	0.37	0.37	8.06	21.78	8.45	22.84	17-Jul-2022	-
49	KOIPSS-01-A-030	30	KACO ATI	2012	Bulu Bonggu	1° 41' 49.978"	119° 26' 12.716"	0.43	0.43	9.16	21.30	9.61	22.35	17-Jul-2022	-
50	KOIPSS-01-A-031	31	IBNU HATTA	2015	Bulu Bonggu	1° 41' 5.479"	119° 26' 20.833"	1.36	-	-	-	0.00	-	17-Jul-2022	-
51	KOIPSS-01-A-032	32	NUHUNG 1	2011	Bulu Bonggu	1° 41' 36.539"	119° 26' 14.538"	1.96	1.96	33.97	17.33	35.63	18.18	17-Jul-2022	-
52	KOIPSS-01-B-032		NUHUNG 2	2011	Bulu Bonggu	1° 41' 46.183"	119° 26' 22.084"	0.57	0.57	12.11	21.25	12.70	22.28	17-Jul-2022	-
53	KOIPSS-01-A-033	33	MARAU LANG 1	2014	Bulu Bonggu	1° 41' 21.878"	119° 26' 22.457"	0.85	0.85	14.65	17.24	15.37	18.08	17-Jul-2022	-
54	KOIPSS-01-B-033		MARAU LANG 2	2014	Bulu Bonggu	1° 41' 23.016"	119° 26' 24.267"	1.49	1.49	23.91	16.05	25.08	16.83	17-Jul-2022	-
55	KOIPSS-01-A-034	34	BAHARUDDIN L	2017	Bulu Bonggu	1° 41' 20.524"	119° 26' 29.701"	0.63	-	-	-	0.00	-	17-Jul-2022	-
56	KOIPSS-01-A-035	35	BAHARUDDIN B1	2012	Bulu Bonggu	1° 41' 8.787"	119° 25' 51.896"	2.01	2.01	33.61	16.72	35.26	17.54	17-Jul-2022	-
57	KOIPSS-01-B-035		BAHARUDDIN B2	2012	Bulu Bonggu	1° 41' 41.813"	119° 25' 43.856"	0.63	0.63	12.45	19.76	13.06	20.73	17-Jul-2022	-
58	KOIPSS-01-C-035		BAHARUDDIN B3	2012	Bulu Bonggu	1° 41' 46.156"	119° 25' 40.324"	0.71	0.71	13.52	19.04	14.18	19.97	17-Jul-2022	-
59	KOIPSS-01-A-036	36	NURBAYA	2014	Bulu Bonggu	1° 41' 47.067"	119° 26' 7.480"	0.72	-	-	-	0.00	-	17-Jul-2022	-
60	KOIPSS-01-A-037	37	KACO A	2015	Bulu Bonggu	1° 40' 57.798"	119° 26' 32.298"	1.97	1.97	24.03	12.20	25.21	12.80	17-Jul-2022	-
61	KOIPSS-02-A-038	38	ALI. K 1	2014	Bulu Bonggu	1° 42' 8.119"	119° 26' 3.918"	1.83	1.83	28.78	15.73	30.19	16.50	17-Jul-2022	-
62	KOIPSS-02-B-038		ALI. K 2	2014	Bulu Bonggu	1° 42' 6.830"	119° 25' 58.357"	1.10	1.10	18.39	16.72	19.29	17.54	17-Jul-2022	-
63	KOIPSS-02-A-039	39	SYAHRIL B	2012	Bulu Bonggu	1° 42' 11.920"	119° 26' 4.673"	2.00	2.00	33.22	16.61	34.85	17.43	17-Jul-2022	-
64	KOIPSS-02-A-040	40	RUSMAN	2010	Bulu Bonggu	1° 42' 6.403"	119° 26' 14.018"	2.16	2.16	38.51	17.83	40.40	18.70	17-Jul-2022	-
65	KOIPSS-02-A-041	41	SUKANI 1	2015	Bulu Bonggu	1° 41' 44.067"	119° 25' 43.286"	0.95	0.95	13.16	13.85	13.80	14.53	17-Jul-2022	-
66	KOIPSS-02-B-041		SUKANI 2	2010	Bulu Bonggu	1° 41' 46.195"	119° 25' 44.357"	1.32	1.32	24.42	18.50	25.62	19.41	17-Jul-2022	-
67	KOIPSS-02-A-042	42	HUSNA 1	2014	Bulu Bonggu	1° 42' 2.884"	119° 26' 15.733"	1.02	1.02	17.41	17.07	18.26	17.90	17-Jul-2022	-

No.	No. ID	No. Of member	Smallholder Name	Planting Years	Location	Coordinate		Area		Actual FFB	Yield	Projection FFB	Yield	Date of Joining	Date of Leaving
					Village	Latitude (S)	Longitude (E)	Total Area	Production Area	production (MT/Year)	(MT/Ha/ Year)	Production (MT/Year)	(MT/ Ha/ Year)		
Dapurang Sub District, Sulawesi Barat, Indonesia															
68	KOIPSS-02-B-042	43	HUSNA 2	2014	Bulu Bonggu	1° 41' 55.409"	119° 25' 59.578"	0.89	0.89	15.35	17.25	16.10	18.09	17-Jul-2022	-
69	KOIPSS-02-C-042		HUSNA 3	2014	Bulu Bonggu	1° 41' 53.395"	119° 26' 2.340"	0.49	0.49	9.72	19.84	10.20	20.82	17-Jul-2022	-
70	KOIPSS-02-A-043		USMAN BONANG 1	2018	Bulu Bonggu	1° 42' 15.046"	119° 25' 59.275"	0.73	0.73	6.78	9.29	7.11	9.74	17-Jul-2022	-
71	KOIPSS-02-B-043		USMAN BONANG 2	2017	Bulu Bonggu	1° 42' 23.430"	119° 25' 59.721"	2.06	2.06	20.23	9.82	21.22	10.30	17-Jul-2022	-
72	KOIPSS-02-A-044	44	HERMAN 1	2012	Bulu Bonggu	1° 41' 15.324"	119° 26' 34.631"	0.66	0.66	12.95	19.62	13.58	20.58	17-Jul-2022	-
73	KOIPSS-02-B-044		HERMAN 2	2012	Bulu Bonggu	1° 44' 24.123"	119° 23' 51.651"	1.37	1.37	23.75	17.34	24.91	18.18	17-Jul-2022	-
74	KOIPSS-02-C-044		HERMAN 3	2016	Bulu Bonggu	1° 40' 50.957"	119° 26' 43.500"	1.93	1.93	21.21	10.99	22.25	11.53	17-Jul-2022	-
75	KOIPSS-02-A-045	45	IBRAHIM 1	2010	Bulu Bonggu	1° 41' 54.503"	119° 25' 57.141"	1.12	1.12	20.94	18.70	21.97	19.62	17-Jul-2022	-
76	KOIPSS-02-B-045		IBRAHIM 2	2010	Bulu Bonggu	1° 41' 54.470"	119° 25' 49.086"	0.45	0.45	9.80	21.78	10.28	22.84	17-Jul-2022	-
77	KOIPSS-02-C-045		IBRAHIM 3	2010	Bulu Bonggu	1° 41' 57.665"	119° 25' 53.408"	0.66	0.66	13.69	20.74	14.36	21.76	17-Jul-2022	-
78	KOIPSS-02-D-045		IBRAHIM 4	2010	Bulu Bonggu	1° 41' 55.206"	119° 25' 52.742"	1.90	1.90	33.03	17.38	34.65	18.24	17-Jul-2022	-
79	KOIPSS-02-A-046	46	ISMAIL S	2009	Bulu Bonggu	1° 41' 43.258"	119° 25' 34.032"	1.96	1.96	38.61	19.70	40.50	20.66	17-Jul-2022	-
80	KOIPSS-02-A-047	47	BAHARUDDIN C1	2014	Bulu Bonggu	1° 41' 42.780"	119° 25' 40.898"	0.68	0.68	12.80	18.82	13.43	19.75	17-Jul-2022	-
81	KOIPSS-02-B-047		BAHARUDDIN C2	2014	Bulu Bonggu	1° 41' 43.763"	119° 25' 38.808"	0.44	0.44	9.23	20.98	9.68	22.00	17-Jul-2022	-
82	KOIPSS-02-A-048	48	HASBIA 1	2010	Bulu Bonggu	1° 42' 9.616"	119° 25' 58.804"	0.29	0.29	7.48	25.79	7.85	27.07	17-Jul-2022	-
83	KOIPSS-02-B-048		HASBIA 2	2010	Bulu Bonggu	1° 42' 8.282"	119° 26' 7.311"	0.41	0.41	9.44	23.02	9.90	24.15	17-Jul-2022	-
84	KOIPSS-02-A-049	49	KACO B	2015	Bulu Bonggu	1° 42' 23.539"	119° 26' 28.467"	1.56	1.56	19.50	12.50	20.46	13.12	17-Jul-2022	-
85	KOIPSS-02-A-050	50	DADI	2018	Bulu Bonggu	1° 39' 53.688"	119° 27' 41.958"	1.16	1.16	8.66	7.47	9.08	7.83	17-Jul-2022	-
86	KOIPSS-02-A-051	51	RIDWAN	2017	Bulu Bonggu	1° 41' 54.739"	119° 25' 36.475"	1.45	1.45	15.15	10.45	15.89	10.96	17-Jul-2022	-
87	KOIPSS-02-A-052	52	KAMARUDDIN 1	2017	Bulu Bonggu	1° 39' 28.538"	119° 27' 45.383"	2.59	2.59	24.35	9.40	25.54	9.86	17-Jul-2022	-
88	KOIPSS-02-B-052		KAMARUDDIN 2	2017	Bulu Bonggu	1° 41' 35.734"	119° 25' 38.272"	2.18	2.18	20.41	9.36	21.41	9.82	17-Jul-2022	-
89	KOIPSS-02-A-053	53	ASLAMIA	2012	Bulu Bonggu	1° 41' 53.098"	119° 26' 26.488"	0.79	0.79	15.02	19.01	15.76	19.95	17-Jul-2022	-
90	KOIPSS-02-A-054	54	ABDULLAH A1	2012	Bulu Bonggu	1° 42' 0.954"	119° 26' 4.149"	0.42	0.42	9.45	22.50	9.91	23.60	17-Jul-2022	-
91	KOIPSS-02-B-054		ABDULLAH A2	2012	Bulu Bonggu	1° 42' 0.659"	119° 26' 5.921"	0.55	0.55	11.37	20.67	11.93	21.69	17-Jul-2022	-
92	KOIPSS-02-A-055	55	SAMSUL T	2014	Bulu Bonggu	1° 41' 41.306"	119° 25' 33.893"	1.94	1.94	30.53	15.74	32.03	16.51	17-Jul-2022	-
93	KOIPSS-02-A-056	56	ANWAR A	2014	Bulu Bonggu	1° 41' 51.782"	119° 26' 12.360"	0.32	0.32	7.13	22.28	7.48	23.38	17-Jul-2022	-
94	KOIPSS-02-A-057	57	ANWAR.S 1	2016	Bulu Bonggu	1° 41' 57.333"	119° 26' 21.987"	1.92	1.92	21.28	11.08	22.32	11.63	17-Jul-2022	-
95	KOIPSS-02-B-057		ANWAR.S 2	2016	Bulu Bonggu	1° 41' 55.656"	119° 26' 27.028"	1.30	1.30	15.41	11.85	16.17	12.44	17-Jul-2022	-
96	KOIPSS-02-A-058	58	LIAWATI	2015	Bulu Bonggu	1° 40' 58.932"	119° 26' 13.026"	1.74	1.74	21.64	12.44	22.70	13.05	17-Jul-2022	-
97	KOIPSS-02-A-059	59	SAPPE	2012	Bulu Bonggu	1° 41' 59.962"	119° 26' 7.864"	0.63	0.63	12.15	19.29	12.75	20.24	17-Jul-2022	-
98	KOIPSS-02-A-060	60	SAHIR NASIR	2015	Bulu Bonggu	1° 38' 52.650"	119° 27' 20.703"	1.91	1.91	23.38	12.24	24.53	12.84	17-Jul-2022	-
99	KOIPSS-02-A-061	61	NURMIATI 1	2013	Bulu Bonggu	1° 39' 47.912"	119° 27' 11.982"	1.66	1.66	27.26	16.42	28.60	17.23	17-Jul-2022	-
100	KOIPSS-02-B-061		NURMIATI 2	2010	Bulu Bonggu	1° 40' 40.303"	119° 26' 42.861"	1.75	1.75	31.27	17.87	32.80	18.74	17-Jul-2022	-
101	KOIPSS-02-A-062	62	M. NURSAID	2012	Bulu Bonggu	1° 43' 7.662"	119° 25' 42.508"	1.99	1.99	33.12	16.64	34.74	17.46	17-Jul-2022	-
102	KOIPSS-02-A-063	63	YUNUS	2010	Bulu Bonggu	1° 42' 6.419"	119° 25' 42.628"	1.91	1.91	34.29	17.95	35.97	18.83	17-Jul-2022	-
103	KOIPSS-02-A-064	64	RESKY	2010	Bulu Bonggu	1° 42' 13.352"	119° 25' 39.850"	1.35	1.35	24.84	18.40	26.06	19.30	17-Jul-2022	-
104	KOIPSS-02-A-065	65	RUSTAN 1	2007	Bulu Bonggu	1° 40' 36.262"	119° 26' 28.698"	0.67	0.67	15.24	22.75	15.99	23.87	17-Jul-2022	-
105	KOIPSS-02-B-065		RUSTAN 2	2007	Bulu Bonggu	1° 41' 26.597"	119° 26' 19.785"	0.64	0.64	14.64	22.88	15.36	24.00	17-Jul-2022	-
106	KOIPSS-02-C-065		RUSTAN 3	2007	Bulu Bonggu	1° 40' 42.362"	119° 26' 22.420"	1.05	1.05	22.97	21.88	24.10	22.95	17-Jul-2022	-
107	KOIPSS-02-A-066	66	KASMIR BIN NASIR	2018	Bulu Bonggu	1° 38' 49.293"	119° 27' 20.382"	2.38	-	-	-	0.00	-	17-Jul-2022	-
108	KOIPSS-02-A-067	67	JASMAN A	2013	Bulu Bonggu	1° 40' 7.911"	119° 27' 8.758"	1.97	1.97	31.62	16.05	33.17	16.84	17-Jul-2022	-

No.	No. ID	No. Of member	Smallholder Name	Planting Years	Location	Coordinate		Area		Actual FFB	Yield	Projection FFB	Yield	Date of Joining	Date of Leaving
					Village	Latitude (S)	Longitude (E)	Total Area	Production Area	production (MT/Year)	(MT/Ha/ Year)	Production (MT/Year)	(MT/ Ha/ Year)		
Dapurang Sub District, Sulawesi Barat, Indonesia															
109	KOIPSS-02-A-068	68	RUSDIN	2015	Bulu Bonggu	1° 43' 3.982"	119° 25' 24.732"	1.28	1.28	16.65	13.01	17.47	13.65	17-Jul-2022	-
110	KOIPSS-02-A-069	69	BASTEN 1	2012	Bulu Bonggu	1° 42' 25.282"	119° 25' 53.164"	1.28	1.28	22.33	17.45	23.42	18.30	17-Jul-2022	-
111	KOIPSS-02-B-069		BASTEN 2	2018	Bulu Bonggu	1° 42' 14.319"	119° 25' 49.264"	1.80	-	-	-	0.00	-	17-Jul-2022	-
112	KOIPSS-02-A-070	70	LATAHANG 1	2008	Bulu Bonggu	1° 40' 41.251"	119° 26' 50.840"	0.98	0.98	20.98	21.41	22.01	22.46	17-Jul-2022	-
113	KOIPSS-02-B-070		LATAHANG 2	2007	Bulu Bonggu	1° 41' 8.684"	119° 26' 4.254"	1.71	1.71	35.90	20.99	37.66	22.02	17-Jul-2022	-
114	KOIPSS-02-C-070	71	LATAHANG 3	2007	Bulu Bonggu	1° 40' 36.572"	119° 26' 40.670"	1.55	1.55	32.27	20.82	33.85	21.84	17-Jul-2022	-
115	KOIPSS-02-A-071		DAULENG 1	2014	Bulu Bonggu	1° 43' 9.149"	119° 25' 44.482"	0.77	0.77	13.82	17.95	14.50	18.83	17-Jul-2022	-
116	KOIPSS-02-B-071		DAULENG 2	2014	Bulu Bonggu	1° 43' 7.927"	119° 25' 59.583"	0.62	0.62	11.78	19.00	12.36	19.94	17-Jul-2022	-
117	KOIPSS-02-A-072	72	TAMRIN A	2015	Bulu Bonggu	1° 42' 10.531"	119° 26' 25.430"	1.93	1.93	23.39	12.12	24.54	12.72	17-Jul-2022	-
118	KOIPSS-02-A-073	73	HAEDAR 1	2018	Bulu Bonggu	1° 41' 15.603"	119° 26' 38.928"	0.84	0.84	7.04	8.38	7.38	8.79	17-Jul-2022	-
119	KOIPSS-02-B-073		HAEDAR 2	2017	Bulu Bonggu	1° 39' 58.370"	119° 27' 34.949"	1.05	1.05	11.20	10.67	11.75	11.19	17-Jul-2022	-
120	KOIPSS-02-C-073		HAEDAR 3	2018	Bulu Bonggu	1° 39' 56.327"	119° 27' 42.665"	1.97	1.97	12.84	6.52	13.47	6.84	17-Jul-2022	-
121	KOIPSS-02-A-074	74	ANSAR REALI 1	2013	Bulu Bonggu	1° 40' 43.719"	119° 27' 1.591"	0.87	0.87	15.95	18.33	16.73	19.23	17-Jul-2022	-
122	KOIPSS-02-B-074		ANSAR REALI 2	2013	Bulu Bonggu	1° 42' 40.346"	119° 25' 45.045"	1.50	1.50	25.18	16.79	26.41	17.61	17-Jul-2022	-
123	KOIPSS-02-C-074		ANSAR REALI 3	2013	Bulu Bonggu	1° 42' 23.645"	119° 25' 39.785"	1.97	1.97	32.17	16.33	33.75	17.13	17-Jul-2022	-
124	KOIPSS-02-A-075	75	RUSTAM	2012	Bulu Bonggu	1° 42' 52.209"	119° 25' 31.101"	0.89	0.89	16.31	18.33	17.11	19.22	17-Jul-2022	-
125	KOIPSS-02-A-076	76	SAHRUL A	2012	Bulu Bonggu	1° 39' 38.556"	119° 27' 42.259"	1.36	1.36	23.20	17.06	24.34	17.90	17-Jul-2022	-
126	KOIPSS-03-A-077	77	DAUD 1	2008	Bulu Bonggu	1° 40' 51.857"	119° 26' 58.298"	0.67	0.67	14.89	22.22	15.62	23.31	17-Jul-2022	-
127	KOIPSS-03-B-077		DAUD 2	2010	Bulu Bonggu	1° 41' 10.087"	119° 26' 35.356"	1.97	1.97	34.84	17.69	36.55	18.55	17-Jul-2022	-
128	KOIPSS-03-A-078	78	ANGGA	2011	Bulu Bonggu	1° 39' 25.106"	119° 27' 34.419"	1.98	1.98	34.32	17.33	36.00	18.18	17-Jul-2022	-
129	KOIPSS-03-A-079	79	GOMMO BIN LASU	2016	Bulu Bonggu	1° 41' 22.551"	119° 25' 57.585"	0.52	0.52	7.63	14.67	8.00	15.38	17-Jul-2022	-
130	KOIPSS-03-A-080	80	TAMRIN B 1	2014	Bulu Bonggu	1° 41' 4.365"	119° 26' 46.293"	0.54	0.54	10.52	19.48	11.04	20.44	17-Jul-2022	-
131	KOIPSS-03-B-080		TAMRIN B 2	2007	Bulu Bonggu	1° 40' 35.246"	119° 26' 50.951"	0.72	0.72	16.96	23.56	17.79	24.71	17-Jul-2022	-
132	KOIPSS-03-A-081	81	SABIR	2013	Bulu Bonggu	1° 41' 54.605"	119° 26' 29.706"	0.62	0.62	11.87	19.15	12.45	20.08	17-Jul-2022	-
133	KOIPSS-03-A-082	82	WAHYUDDIN	2012	Bulu Bonggu	1° 40' 46.129"	119° 26' 33.812"	2.32	2.32	37.92	16.34	39.78	17.15	17-Jul-2022	-
134	KOIPSS-03-A-083	83	MUSDAR	2002	Bulu Bonggu	1° 41' 26.201"	119° 26' 25.727"	1.06	1.06	26.60	25.09	27.90	26.32	17-Jul-2022	-
135	KOIPSS-03-A-084	84	SANGINRIA	2015	Bulu Bonggu	1° 41' 9.081"	119° 26' 32.725"	1.08	1.08	14.43	13.36	15.14	14.02	17-Jul-2022	-
136	KOIPSS-03-A-085	85	ARIFUDDIN B	2011	Bulu Bonggu	1° 41' 1.767"	119° 26' 41.612"	1.01	1.01	18.85	18.66	19.77	19.57	17-Jul-2022	-
137	KOIPSS-03-A-086	86	M. TABIR	2012	Bulu Bonggu	1° 41' 32.894"	119° 26' 32.299"	1.08	1.08	19.43	17.99	20.38	18.87	17-Jul-2022	-
138	KOIPSS-03-A-087	87	MASDI	2009	Bulu Bonggu	1° 42' 49.013"	119° 25' 31.273"	1.83	1.83	36.57	19.98	38.36	20.96	17-Jul-2022	-
139	KOIPSS-03-A-088	88	ZAINUDDIN	2015	Bulu Bonggu	1° 41' 10.092"	119° 25' 56.239"	1.09	1.09	14.74	13.52	15.46	14.18	17-Jul-2022	-
140	KOIPSS-03-A-089	89	ABD HALIM 1	2012	Bulu Bonggu	1° 41' 6.020"	119° 25' 56.891"	1.99	1.99	33.40	16.78	35.04	17.61	17-Jul-2022	-
141	KOIPSS-03-B-089		ABD HALIM 2	2006	Bulu Bonggu	1° 41' 1.010"	119° 25' 57.856"	1.96	1.96	40.75	20.79	42.75	21.81	17-Jul-2022	-
142	KOIPSS-03-C-089		ABD HALIM 3	2016	Bulu Bonggu	1° 40' 35.462"	119° 26' 33.917"	0.50	0.50	7.74	15.48	8.12	16.24	17-Jul-2022	-
143	KOIPSS-03-A-090	90	DAHLAN 1	2011	Bulu Bonggu	1° 42' 57.392"	119° 25' 31.134"	0.70	0.70	14.20	20.29	14.90	21.29	17-Jul-2022	-
144	KOIPSS-03-B-090		DAHLAN 2	2013	Bulu Bonggu	1° 40' 49.254"	119° 26' 38.466"	0.69	0.69	12.95	18.77	13.58	19.68	17-Jul-2022	-
145	KOIPSS-03-A-091	91	AS'AD YUSUF	2011	Bulu Bonggu	1° 41' 49.692"	119° 26' 32.171"	1.39	1.39	24.98	17.97	26.20	18.85	17-Jul-2022	-
146	KOIPSS-03-A-092	92	HUSAING	2017	Bulu Bonggu	1° 40' 35.833"	119° 26' 46.666"	2.02	2.02	19.35	9.58	20.30	10.05	17-Jul-2022	-
147	KOIPSS-03-A-093	93	HANA	2009	Bulu Bonggu	1° 41' 29.584"	119° 26' 28.774"	1.32	1.32	26.84	20.33	28.16	21.33	17-Jul-2022	-
148	KOIPSS-03-A-094	94	NURHANAH	2017	Bulu Bonggu	1° 40' 39.078"	119° 26' 23.897"	0.85	0.85	9.86	11.60	10.34	12.16	17-Jul-2022	-
149	KOIPSS-03-A-095	95	AGUS A	2013	Bulu Bonggu	1° 40' 11.954"	119° 27' 17.555"	1.98	1.98	32.21	16.27	33.79	17.07	17-Jul-2022	-

No.	No. ID	No. Of member	Smallholder Name	Planting Years	Location	Coordinate		Area		Actual FFB	Yield	Projection FFB	Yield	Date of Joining	Date of Leaving
					Village	Latitude (S)	Longitude (E)	Total Area	Production Area	production (MT/Year)	(MT/Ha/ Year)	Production (MT/Year)	(MT/ Ha/ Year)		
Dapurang Sub District, Sulawesi Barat, Indonesia															
150	KOIPSS-03-A-096	96	BASRAN	2010	Bulu Bonggu	1° 41' 33.668"	119° 26' 21.614"	0.44	0.44	10.22	23.23	10.72	24.36	17-Jul-2022	-
151	KOIPSS-03-A-097	97	ABD RAHMAN B	2007	Bulu Bonggu	1° 41' 5.529"	119° 26' 45.405"	0.52	0.52	12.73	24.48	13.35	25.67	17-Jul-2022	-
152	KOIPSS-03-A-098	98	ABD RAHIM. S	2015	Bulu Bonggu	1° 41' 7.007"	119° 26' 43.568"	0.26	0.26	5.68	21.85	5.96	22.92	17-Jul-2022	-
153	KOIPSS-03-A-099	99	MARTEN SANDEK	2010	Bulu Bonggu	1° 40' 52.326"	119° 26' 20.904"	1.16	1.16	21.47	18.51	22.52	19.41	17-Jul-2022	-
154	KOIPSS-03-A-100	100	FATAHUDDIN	2010	Bulu Bonggu	1° 41' 12.635"	119° 26' 42.878"	0.75	0.75	14.90	19.87	15.63	20.84	17-Jul-2022	-
155	KOIPSS-03-A-101	101	RIPAI	2010	Bulu Bonggu	1° 41' 3.642"	119° 26' 57.220"	1.35	1.35	24.85	18.41	26.07	19.31	17-Jul-2022	-
156	KOIPSS-03-A-102	102	AGUS SALIM	2016	Bulu Bonggu	1° 40' 52.058"	119° 26' 38.157"	1.38	1.38	16.22	11.75	17.01	12.33	17-Jul-2022	-
157	KOIPSS-03-A-103	103	MAMING	2015	Bulu Bonggu	1° 40' 53.318"	119° 26' 51.288"	2.69	2.69	31.51	11.71	33.05	12.29	17-Jul-2022	-
158	KOIPSS-03-A-104	104	HAMMA DAALI A	2015	Bulu Bonggu	1° 41' 50.398"	119° 26' 25.763"	1.19	1.19	15.17	12.75	15.91	13.37	17-Jul-2022	-
159	KOIPSS-03-A-105	105	JUMAALI 1	2012	Bulu Bonggu	1° 41' 12.539"	119° 26' 8.648"	0.97	0.97	17.36	17.90	18.21	18.77	17-Jul-2022	-
160	KOIPSS-03-B-105		JUMAALI 2	2012	Bulu Bonggu	1° 40' 56.967"	119° 26' 27.279"	1.96	1.96	32.97	16.82	34.59	17.65	17-Jul-2022	-
161	KOIPSS-03-A-106	106	KANDUA	2015	Bulu Bonggu	1° 41' 18.533"	119° 26' 35.183"	0.44	0.44	7.56	17.18	7.93	18.02	17-Jul-2022	-
162	KOIPSS-03-A-107	107	JAMALUDDIN A1	2015	Bulu Bonggu	1° 41' 5.661"	119° 26' 39.915"	1.12	1.12	15.14	13.52	15.88	14.18	17-Jul-2022	-
163	KOIPSS-03-B-107		JAMALUDDIN A2	2015	Bulu Bonggu	1° 41' 5.471"	119° 26' 36.259"	0.43	0.43	7.17	16.67	7.52	17.49	17-Jul-2022	-
164	KOIPSS-03-C-107		JAMALUDDIN A3	2015	Bulu Bonggu	1° 41' 7.135"	119° 26' 46.274"	0.56	0.56	8.93	15.95	9.37	16.73	17-Jul-2022	-
165	KOIPSS-03-A-108	108	BUSMAN	2014	Bulu Bonggu	1° 40' 49.583"	119° 26' 34.751"	1.09	1.09	18.65	17.11	19.56	17.94	17-Jul-2022	-
166	KOIPSS-03-A-109	109	YAKOB TANA 1	2015	Bulu Bonggu	1° 38' 49.337"	119° 27' 34.537"	1.99	1.99	24.02	12.07	25.20	12.66	17-Jul-2022	-
167	KOIPSS-03-B-109		YAKOB TANA 2	2015	Bulu Bonggu	1° 38' 55.110"	119° 27' 30.652"	1.79	1.79	22.23	12.42	23.32	13.03	17-Jul-2022	-
168	KOIPSS-03-C-109		YAKOB TANA 3	2015	Bulu Bonggu	1° 38' 50.673"	119° 27' 29.463"	1.89	1.89	23.25	12.30	24.39	12.90	17-Jul-2022	-
169	KOIPSS-03-D-109		YAKOB TANA 4	2015	Bulu Bonggu	1° 38' 48.882"	119° 27' 27.353"	1.98	1.98	24.28	12.26	25.47	12.86	17-Jul-2022	-
170	KOIPSS-03-A-110	110	ADDI	2014	Bulu Bonggu	1° 40' 22.646"	119° 27' 10.867"	1.47	1.47	23.87	16.24	25.04	17.03	17-Jul-2022	-
171	KOIPSS-03-A-111	111	AMI	2017	Bulu Bonggu	1° 39' 10.617"	119° 27' 43.960"	1.97	1.97	18.92	9.60	19.85	10.08	17-Jul-2022	-
172	KOIPSS-03-A-112	112	IRMAWATI	2011	Bulu Bonggu	1° 39' 48.482"	119° 27' 15.872"	0.73	0.73	14.57	19.96	15.28	20.93	17-Jul-2022	-
173	KOIPSS-03-A-113	113	ARFHAN SINNANG 1	2013	Bulu Bonggu	1° 39' 42.775"	119° 27' 22.778"	2.08	2.08	33.24	15.98	34.87	16.76	17-Jul-2022	-
174	KOIPSS-03-B-113		ARFHAN SINNANG 2	2013	Bulu Bonggu	1° 39' 38.932"	119° 27' 23.725"	1.61	1.61	26.81	16.65	28.12	17.47	17-Jul-2022	-
175	KOIPSS-03-A-114	114	SUMARLIN	2015	Bulu Bonggu	1° 39' 43.025"	119° 27' 9.844"	1.68	1.68	20.75	12.35	21.77	12.96	17-Jul-2022	-
176	KOIPSS-03-A-115	115	LARIS MACANG 1	2012	Bulu Bonggu	1° 39' 36.700"	119° 27' 54.433"	2.01	2.01	33.42	16.63	35.06	17.44	17-Jul-2022	-
177	KOIPSS-03-B-115		LARIS MACANG 2	2014	Bulu Bonggu	1° 42' 28.509"	119° 25' 44.503"	0.59	0.59	11.15	18.90	11.70	19.83	17-Jul-2022	-
178	KOIPSS-03-C-115		LARIS MACANG 3	2012	Bulu Bonggu	1° 39' 38.914"	119° 27' 56.365"	1.97	1.97	32.57	16.53	34.17	17.35	17-Jul-2022	-
179	KOIPSS-03-A-116	116	ABD KARIM LENGKE	2017	Bulu Bonggu	1° 39' 47.751"	119° 27' 51.697"	0.75	0.75	9.33	12.44	9.79	13.05	17-Jul-2022	-
180	KOIPSS-03-A-117	117	HADDAL	2007	Bulu Bonggu	1° 39' 58.968"	119° 27' 16.997"	0.81	0.81	18.40	22.72	19.30	23.83	17-Jul-2022	-
181	KOIPSS-03-A-118	118	LAMAN 1	2018	Bulu Bonggu	1° 39' 43.213"	119° 27' 47.851"	1.95	1.95	13.60	6.97	14.27	7.32	17-Jul-2022	-
182	KOIPSS-03-B-118		LAMAN 2	2015	Bulu Bonggu	1° 39' 43.865"	119° 27' 51.990"	1.60	1.60	19.89	12.43	20.86	13.04	17-Jul-2022	-
183	KOIPSS-03-A-119	119	MANSUR	2014	Bulu Bonggu	1° 39' 33.927"	119° 27' 58.920"	2.01	2.01	31.62	15.73	33.17	16.50	17-Jul-2022	-
184	KOIPSS-03-A-120	120	ABD HAMID	2015	Bulu Bonggu	1° 39' 27.445"	119° 28' 1.918"	1.72	1.72	21.06	12.24	22.09	12.84	17-Jul-2022	-
185	KOIPSS-03-A-121	121	MARDIANA A	2015	Bulu Bonggu	1° 38' 33.338"	119° 27' 53.725"	2.02	2.02	24.19	11.98	25.38	12.56	17-Jul-2022	-
186	KOIPSS-03-A-122	122	SYARIFUDDIN B	2012	Bulu Bonggu	1° 39' 31.085"	119° 28' 1.257"	1.92	1.92	31.77	16.55	33.33	17.36	17-Jul-2022	-
187	KOIPSS-03-A-123	123	ARSYAD	2015	Bulu Bonggu	1° 39' 48.861"	119° 27' 39.003"	0.88	0.88	12.48	14.18	13.09	14.88	17-Jul-2022	-
188	KOIPSS-03-A-124	124	HARISMAN	2016	Bulu Bonggu	1° 39' 52.965"	119° 27' 46.990"	0.94	0.94	12.32	13.11	12.92	13.74	17-Jul-2022	-
189	KOIPSS-03-A-125	125	USMAN A	2013	Bulu Bonggu	1° 39' 55.964"	119° 28' 1.743"	1.47	1.47	24.49	16.66	25.69	17.48	17-Jul-2022	-
190	KOIPSS-03-A-126	126	GALIR 1	2016	Bulu Bonggu	1° 39' 29.902"	119° 27' 20.352"	0.95	0.95	12.16	12.80	12.76	13.43	17-Jul-2022	-
191	KOIPSS-03-B-126		GALIR 2	2013	Bulu Bonggu	1° 40' 2.255"	119° 27' 26.164"	0.64	0.64	12.06	18.84	12.65	19.77	17-Jul-2022	-

No.	No. ID	No. Of member	Smallholder Name	Planting Years	Location	Coordinate		Area		Actual FFB	Yield	Projection FFB	Yield	Date of Joining	Date of Leaving
					Village	Latitude (S)	Longitude (E)	Total Area	Production Area	production (MT/Year)	(MT/Ha/ Year)	Production (MT/Year)	(MT/ Ha/ Year)		
Dapurang Sub District, Sulawesi Barat, Indonesia															
192	KOIPeSS-04-A-127	127	HAMID	2013	Bulu Bonggu	1° 42' 39.059"	119° 25' 51.334"	1.79	1.79	28.76	16.07	30.17	16.85	17-Jul-2022	-
193	KOIPeSS-04-A-128	128	MISNATI	2016	Bulu Bonggu	1° 41' 24.863"	119° 27' 1.219"	0.38	0.38	6.51	17.13	6.83	17.97	17-Jul-2022	-
194	KOIPeSS-04-A-129	129	ALI AKBAR	2014	Bulu Bonggu	1° 42' 21.558"	119° 26' 31.194"	0.81	0.81	13.88	17.14	14.56	17.98	17-Jul-2022	-
195	KOIPeSS-04-A-130	130	MALLA	2012	Bulu Bonggu	1° 42' 38.569"	119° 25' 26.731"	2.49	2.49	40.35	16.20	42.33	17.00	17-Jul-2022	-
196	KOIPeSS-04-A-131	131	SARIFUDDIN C	2012	Bulu Bonggu	1° 42' 14.726"	119° 25' 37.599"	1.49	1.49	25.43	17.07	26.68	17.91	17-Jul-2022	-
197	KOIPeSS-04-A-132	132	SARIPUDDIN D	2012	Bulu Bonggu	1° 41' 59.716"	119° 26' 47.209"	1.72	1.72	29.02	16.87	30.44	17.70	17-Jul-2022	-
198	KOIPeSS-04-A-133	133	SYAMSUL 1	2016	Bulu Bonggu	1° 42' 56.801"	119° 25' 44.568"	1.07	1.07	12.89	12.05	13.52	12.64	17-Jul-2022	-
199	KOIPeSS-04-B-133		SYAMSUL 2	2016	Bulu Bonggu	1° 39' 48.744"	119° 27' 26.848"	1.96	1.96	21.86	11.15	22.93	11.70	17-Jul-2022	-
200	KOIPeSS-04-A-134	134	ABD LATIF	2014	Bulu Bonggu	1° 41' 11.570"	119° 27' 53.525"	1.72	1.72	27.87	16.20	29.24	17.00	17-Jul-2022	-
201	KOIPeSS-04-A-135	135	MUHAMMAD YUSUP 1	2016	Bulu Bonggu	1° 41' 35.404"	119° 27' 46.767"	1.95	1.95	21.74	11.15	22.81	11.70	17-Jul-2022	-
202	KOIPeSS-04-B-135		MUHAMMAD YUSUP 2	2014	Bulu Bonggu	1° 41' 43.573"	119° 27' 49.291"	1.97	1.97	30.79	15.63	32.30	16.40	17-Jul-2022	-
203	KOIPeSS-04-C-135		MUHAMMAD YUSUP 3	2016	Bulu Bonggu	1° 41' 31.540"	119° 27' 46.216"	1.54	1.54	17.66	11.47	18.53	12.03	17-Jul-2022	-
204	KOIPeSS-04-A-136	136	USMAN B	2018	Bulu Bonggu	1° 42' 16.050"	119° 27' 28.324"	1.94	1.94	12.61	6.50	13.23	6.82	17-Jul-2022	-
205	KOIPeSS-04-A-137	137	MUSLIM DEMA	2012	Bulu Bonggu	1° 42' 8.964"	119° 27' 15.178"	1.46	1.46	25.42	17.41	26.67	18.27	17-Jul-2022	-
206	KOIPeSS-04-A-138	138	HUDA 1	2015	Bulu Bonggu	1° 41' 21.493"	119° 26' 42.530"	0.89	0.89	12.51	14.06	13.12	14.74	17-Jul-2022	-
207	KOIPeSS-04-B-138		HUDA 2	2016	Bulu Bonggu	1° 42' 33.912"	119° 26' 11.145"	0.79	0.79	10.38	13.14	10.89	13.78	17-Jul-2022	-
208	KOIPeSS-04-C-138		HUDA 3	2015	Bulu Bonggu	1° 42' 21.803"	119° 25' 30.640"	1.10	1.10	15.07	13.70	15.81	14.37	17-Jul-2022	-
209	KOIPeSS-04-A-139	139	RUSDI	2013	Bulu Bonggu	1° 42' 13.093"	119° 26' 22.817"	2.00	2.00	32.29	16.15	33.87	16.94	17-Jul-2022	-
210	KOIPeSS-04-A-140	140	SYAMSUDDIN B	2015	Bulu Bonggu	1° 42' 10.751"	119° 25' 44.099"	1.25	1.25	16.34	13.07	17.14	13.71	17-Jul-2022	-
211	KOIPeSS-04-A-141	141	SULTAN 1	2012	Bulu Bonggu	1° 43' 2.337"	119° 25' 53.484"	1.91	1.91	32.29	16.91	33.87	17.73	17-Jul-2022	-
212	KOIPeSS-04-B-141		SULTAN 2	2012	Bulu Bonggu	1° 42' 38.234"	119° 26' 0.025"	1.96	1.96	32.73	16.70	34.33	17.52	17-Jul-2022	-
213	KOIPeSS-04-A-142	142	BAKRI JAMA 1	2011	Bulu Bonggu	1° 42' 14.803"	119° 27' 25.219"	1.98	1.98	34.48	17.41	36.17	18.27	17-Jul-2022	-
214	KOIPeSS-04-B-142		BAKRI JAMA 2	2011	Bulu Bonggu	1° 42' 8.238"	119° 27' 25.205"	1.71	1.71	30.34	17.74	31.83	18.61	17-Jul-2022	-
215	KOIPeSS-04-A-143	143	ALI. L	2013	Bulu Bonggu	1° 42' 21.329"	119° 26' 23.738"	1.73	1.73	28.34	16.38	29.73	17.18	17-Jul-2022	-
216	KOIPeSS-04-A-144	144	JASMAN B	2014	Bulu Bonggu	1° 43' 5.226"	119° 25' 37.868"	1.96	1.96	30.03	15.32	31.50	16.07	17-Jul-2022	-
217	KOIPeSS-04-A-145	145	AHMAD. K	2012	Bulu Bonggu	1° 42' 29.638"	119° 25' 51.234"	1.94	1.94	32.76	16.89	34.37	17.72	17-Jul-2022	-
218	KOIPeSS-04-A-146	146	SAMPE LOBO	2018	Bulu Bonggu	1° 42' 26.667"	119° 25' 59.193"	1.04	-	-	-	0.00	-	17-Jul-2022	-
219	KOIPeSS-04-A-147	147	BASRI	2017	Bulu Bonggu	1° 41' 52.809"	119° 26' 31.145"	0.84	0.84	9.69	11.54	10.16	12.10	17-Jul-2022	-
220	KOIPeSS-04-A-148	148	BUNYAMIN	2012	Bulu Bonggu	1° 42' 2.821"	119° 26' 27.485"	1.69	1.69	28.81	17.05	30.22	17.88	17-Jul-2022	-
221	KOIPeSS-04-A-149	149	AMIRUDDIN	2014	Bulu Bonggu	1° 42' 24.286"	119° 26' 24.734"	1.58	1.58	25.45	16.11	26.70	16.90	17-Jul-2022	-
222	KOIPeSS-04-A-150	150	ABD RAHMAD 1	2014	Bulu Bonggu	1° 42' 19.339"	119° 27' 53.523"	2.34	2.34	35.76	15.28	37.51	16.03	17-Jul-2022	-
223	KOIPeSS-04-B-150		ABD RAHMAD 2	2014	Bulu Bonggu	1° 41' 2.556"	119° 26' 28.205"	0.85	0.85	14.70	17.29	15.42	18.14	17-Jul-2022	-
224	KOIPeSS-04-C-150		ABD RAHMAD 3	2014	Bulu Bonggu	1° 40' 38.967"	119° 26' 32.204"	1.16	1.16	18.98	16.36	19.91	17.16	17-Jul-2022	-
225	KOIPeSS-04-A-151	151	GANI 1	2017	Bulu Bonggu	1° 39' 26.560"	119° 27' 14.153"	1.96	1.96	19.20	9.80	20.14	10.28	17-Jul-2022	-
226	KOIPeSS-04-B-151		GANI 2	2004	Bulu Bonggu	1° 39' 15.539"	119° 27' 10.579"	1.90	1.90	43.41	22.85	45.54	23.97	17-Jul-2022	-
227	KOIPeSS-05-A-152	152	USMAN C1	2010	Benggaulu	1° 39' 27.832"	119° 26' 12.652"	0.93	0.93	17.90	19.25	18.78	20.19	17-Jul-2022	-
228	KOIPeSS-05-B-152		USMAN C2	2010	Benggaulu	1° 39' 30.451"	119° 26' 16.339"	2.13	2.13	37.60	17.65	39.44	18.52	17-Jul-2022	-
229	KOIPeSS-05-A-153	153	SUDIRMAN 1	2009	Benggaulu	1° 39' 53.082"	119° 26' 11.508"	2.18	2.18	42.50	19.50	44.58	20.45	17-Jul-2022	-
230	KOIPeSS-05-B-153		SUDIRMAN 2	2015	Benggaulu	1° 39' 45.100"	119° 26' 36.134"	1.95	1.95	23.37	11.98	24.52	12.57	17-Jul-2022	-
231	KOIPeSS-05-C-153		SUDIRMAN 3	2011	Benggaulu	1° 39' 41.175"	119° 26' 7.564"	0.68	0.68	13.78	20.26	14.46	21.26	17-Jul-2022	-
232	KOIPeSS-05-A-154	154	UMAR	2010	Benggaulu	1° 40' 2.320"	119° 25' 59.020"	2.73	2.73	47.07	17.24	49.38	18.09	17-Jul-2022	-

No.	No. ID	No. Of member	Smallholder Name	Planting Years	Location	Coordinate		Area		Actual FFB	Yield	Projection FFB	Yield	Date of Joining	Date of Leaving
					Village	Latitude (S)	Longitude (E)	Total Area	Production Area	production (MT/Year)	(MT/Ha/ Year)	Production (MT/Year)	(MT/ Ha/ Year)		
Dapurang Sub District, Sulawesi Barat, Indonesia															
233	KOIPSS-05-A-155	155	ABD HARIS	2011	Benggaulu	1° 39' 46.424"	119° 25' 45.064"	0.61	0.61	12.81	21.00	13.44	22.03	17-Jul-2022	-
234	KOIPSS-05-A-156	156	HJ. HAPIDAH	2011	Benggaulu	1° 39' 36.456"	119° 25' 53.849"	0.84	0.84	15.81	18.82	16.58	19.74	17-Jul-2022	-
235	KOIPSS-05-A-157	157	ABD SALAM	2011	Benggaulu	1° 39' 48.399"	119° 25' 55.504"	2.00	2.00	34.76	17.38	36.46	18.23	17-Jul-2022	-
236	KOIPSS-05-A-158	158	HJ. HASNA	2010	Benggaulu	1° 40' 20.021"	119° 25' 41.525"	0.71	0.71	14.48	20.39	15.19	21.39	17-Jul-2022	-
237	KOIPSS-05-A-159	159	MUH ALI	2010	Benggaulu	1° 39' 4.838"	119° 26' 56.613"	1.97	1.97	34.57	17.55	36.26	18.41	17-Jul-2022	-
238	KOIPSS-05-A-160	160	SAPARENG	2012	Benggaulu	1° 39' 57.026"	119° 26' 0.139"	2.07	2.07	34.53	16.68	36.22	17.50	17-Jul-2022	-
239	KOIPSS-05-A-161	161	SUPRIADI	2010	Benggaulu	1° 39' 41.549"	119° 26' 37.349"	1.79	1.79	31.76	17.74	33.32	18.61	17-Jul-2022	-
240	KOIPSS-05-A-162	162	YUSUF KALLA 1	2011	Benggaulu	1° 39' 33.221"	119° 26' 28.322"	1.16	1.16	21.53	18.56	22.58	19.47	17-Jul-2022	-
241	KOIPSS-05-B-162		YUSUF KALLA 2	2011	Benggaulu	1° 39' 30.974"	119° 26' 29.505"	0.67	0.67	13.69	20.43	14.36	21.43	17-Jul-2022	-
242	KOIPSS-05-A-163	163	BABA SAGALA 1	2010	Benggaulu	1° 39' 36.994"	119° 26' 17.394"	2.00	2.00	35.14	17.57	36.86	18.43	17-Jul-2022	-
243	KOIPSS-05-B-163		BABA SAGALA 2	2017	Benggaulu	1° 40' 21.511"	119° 25' 45.590"	1.54	1.54	15.14	9.83	15.88	10.31	17-Jul-2022	-
244	KOIPSS-05-A-164	164	H. NAWAWI	2011	Benggaulu	1° 39' 35.613"	119° 26' 42.413"	2.51	2.51	43.42	17.30	45.55	18.15	17-Jul-2022	-
245	KOIPSS-05-A-165	165	BAHTIAR	2011	Benggaulu	1° 39' 22.613"	119° 26' 17.582"	2.00	2.00	34.92	17.46	36.63	18.32	17-Jul-2022	-
246	KOIPSS-05-A-166	166	H. ABDUL KADIR	2010	Benggaulu	1° 39' 37.947"	119° 25' 57.425"	2.46	2.46	42.52	17.28	44.60	18.13	17-Jul-2022	-
247	KOIPSS-05-A-167	167	ALIMUDDIN B	2011	Benggaulu	1° 39' 39.646"	119° 26' 26.201"	1.99	1.99	34.67	17.42	36.37	18.28	17-Jul-2022	-
248	KOIPSS-05-A-168	168	HAMIDA	2012	Benggaulu	1° 39' 38.228"	119° 26' 0.632"	0.97	0.97	17.28	17.81	18.13	18.69	17-Jul-2022	-
249	KOIPSS-05-A-169	169	JUMAING	2010	Benggaulu	1° 39' 32.431"	119° 26' 8.205"	1.83	1.83	32.50	17.76	34.09	18.63	17-Jul-2022	-
250	KOIPSS-05-A-170	170	RAMLI	2010	Benggaulu	1° 39' 27.298"	119° 26' 18.159"	2.14	2.14	37.48	17.51	39.32	18.37	17-Jul-2022	-
251	KOIPSS-05-A-171	171	NURSIA	2011	Benggaulu	1° 39' 43.593"	119° 26' 4.109"	1.02	1.02	19.25	18.87	20.19	19.79	17-Jul-2022	-
252	KOIPSS-05-A-172	172	AMIRUDDIN 1	2011	Benggaulu	1° 38' 57.964"	119° 26' 35.843"	2.40	2.40	41.38	17.24	43.41	18.09	17-Jul-2022	-
253	KOIPSS-05-B-172		AMIRUDDIN 2	2011	Benggaulu	1° 38' 53.426"	119° 26' 36.641"	1.79	1.79	31.36	17.52	32.90	18.38	17-Jul-2022	-
254	KOIPSS-05-A-173	173	H. ANDI MARWA	2011	Benggaulu	1° 39' 40.450"	119° 26' 42.735"	1.05	1.05	19.41	18.49	20.36	19.39	17-Jul-2022	-
255	KOIPSS-05-A-174	174	YOHANIS BANDANGAN	2010	Benggaulu	1° 45' 18.419"	119° 23' 51.176"	0.39	0.39	9.23	23.67	9.68	24.82	17-Jul-2022	-
256	KOIPSS-05-A-175	175	MARDIANA B	2010	Benggaulu	1° 38' 55.774"	119° 26' 59.744"	1.63	1.63	29.28	17.96	30.71	18.84	17-Jul-2022	-
257	KOIPSS-05-A-176	176	ABDULLAH B	2011	Benggaulu	1° 39' 17.721"	119° 26' 21.689"	2.09	2.09	36.20	17.32	37.97	18.17	17-Jul-2022	-
258	KOIPSS-05-A-177	177	NARAI	2011	Benggaulu	1° 39' 44.746"	119° 26' 7.242"	1.62	1.62	28.80	17.78	30.21	18.65	17-Jul-2022	-
259	KOIPSS-05-A-178	178	MUSTANG	2009	Benggaulu	1° 39' 28.036"	119° 26' 3.305"	2.73	2.73	52.66	19.29	55.24	20.23	17-Jul-2022	-
260	KOIPSS-06-A-179	179	HAMMA DAALI B	2015	Benggaulu	1° 43' 20.512"	119° 24' 35.418"	0.78	0.78	10.99	14.09	11.53	14.78	17-Jul-2022	-
261	KOIPSS-06-A-180	180	RADI H	2015	Benggaulu	1° 43' 54.860"	119° 24' 20.941"	2.00	2.00	23.86	11.93	25.03	12.52	17-Jul-2022	-
262	KOIPSS-06-A-181	181	SUMAATI	2015	Benggaulu	1° 43' 25.706"	119° 24' 12.901"	2.05	2.05	25.03	12.21	26.26	12.81	17-Jul-2022	-
263	KOIPSS-06-A-182	182	NUSLA	2018	Benggaulu	1° 43' 12.921"	119° 23' 34.914"	2.40	-	-	-	0.00	-	17-Jul-2022	-
264	KOIPSS-06-A-183	183	ASMA	2014	Benggaulu	1° 42' 49.930"	119° 24' 3.991"	0.83	0.83	14.55	17.53	15.26	18.39	17-Jul-2022	-
265	KOIPSS-06-A-184	184	MUHAMMAD	2007	Benggaulu	1° 43' 16.893"	119° 23' 28.043"	0.92	0.92	20.31	22.08	21.31	23.16	17-Jul-2022	-
266	KOIPSS-06-A-185	185	YUSRI ACO	2014	Benggaulu	1° 42' 56.501"	119° 23' 38.121"	0.53	0.53	10.84	20.45	11.37	21.45	17-Jul-2022	-
267	KOIPSS-06-A-186	186	AGUS B	2015	Benggaulu	1° 42' 54.834"	119° 23' 24.689"	1.38	1.38	17.42	12.62	18.27	13.24	17-Jul-2022	-
268	KOIPSS-06-A-187	187	ARIPUDDIN SASENG, SP	2014	Benggaulu	1° 42' 42.511"	119° 23' 59.122"	1.00	1.00	17.21	17.21	18.05	18.05	17-Jul-2022	-
269	KOIPSS-06-A-188	188	FITRIANI	2015	Benggaulu	1° 42' 47.757"	119° 24' 3.265"	0.40	0.40	7.03	17.58	7.37	18.43	17-Jul-2022	-
270	KOIPSS-06-A-189	189	ABDUL SYUKUR	2013	Benggaulu	1° 42' 47.656"	119° 23' 24.143"	1.50	1.50	25.10	16.73	26.33	17.55	17-Jul-2022	-
271	KOIPSS-06-A-190	190	MAHAYA	2013	Benggaulu	1° 43' 21.240"	119° 23' 41.084"	1.99	1.99	31.93	16.05	33.49	16.83	17-Jul-2022	-
272	KOIPSS-06-A-191	191	ANWAR B	2013	Benggaulu	1° 43' 3.669"	119° 23' 43.970"	2.08	2.08	33.63	16.17	35.28	16.96	17-Jul-2022	-
273	KOIPSS-06-A-192	192	HAMZA. S	2013	Benggaulu	1° 42' 38.999"	119° 23' 15.987"	2.28	2.28	36.57	16.04	38.36	16.82	17-Jul-2022	-

No.	No. ID	No. Of member	Smallholder Name	Planting Years	Location	Coordinate		Area		Actual FFB production (MT/Year)	Yield (MT/Ha/ Year)	Projection FFB Production (MT/Year)	Yield (MT/ Ha/ Year)	Date of Joining	Date of Leaving
						Village	Latitude (S)	Longitude (E)	Total Area						
Dapurang Sub District, Sulawesi Barat, Indonesia															
274	KOIPeSS-06-A-193	193	JAMALUDDIN B1	2007	Benggaulu	1° 42' 37.399"	119° 23' 21.353"	2.00	2.00	40.97	20.49	42.98	21.49	17-Jul-2022	-
275	KOIPeSS-06-B-193		JAMALUDDIN B2	2014	Benggaulu	1° 42' 42.852"	119° 23' 22.587"	2.10	2.10	32.55	15.50	34.14	16.26	17-Jul-2022	-
276	KOIPeSS-06-A-194	194	Muhammad Basri Supu	2007	Benggaulu	1° 43' 57.889"	119° 23' 36.456"	1.42	1.42	30.08	21.18	31.55	22.22	17-Jul-2022	-
277	KOIPeSS-06-A-195	195	SIRAJUDDIN	2013	Benggaulu	1° 42' 29.587"	119° 23' 8.051"	1.27	1.27	21.34	16.80	22.39	17.63	17-Jul-2022	-
278	KOIPeSS-06-A-196	196	HALIDIN	2019	Benggaulu	1° 42' 42.170"	119° 23' 18.882"	1.00	-	-	-	0.00	-	17-Jul-2022	-
279	KOIPeSS-06-A-197	197	ABD RAHMAN C	2011	Benggaulu	1° 43' 0.068"	119° 23' 38.954"	1.41	1.41	25.37	17.99	26.61	18.87	17-Jul-2022	-
280	KOIPeSS-06-A-198	198	AHMAD ALI	2012	Benggaulu	1° 43' 56.295"	119° 24' 10.325"	1.98	1.98	32.94	16.64	34.55	17.45	17-Jul-2022	-
281	KOIPeSS-06-A-199	199	ABD RAHIM	2014	Benggaulu	1° 41' 36.961"	119° 24' 40.447"	2.59	2.59	39.30	15.17	41.23	15.92	17-Jul-2022	-
282	KOIPeSS-06-A-200	200	HAMSI	2015	Benggaulu	1° 41' 31.083"	119° 24' 42.915"	1.82	1.82	22.49	12.36	23.59	12.96	17-Jul-2022	-
283	KOIPeSS-06-A-201	201	ABD AZIS B	2015	Benggaulu	1° 41' 43.167"	119° 24' 28.390"	1.37	1.37	17.39	12.69	18.24	13.31	17-Jul-2022	-
284	KOIPeSS-06-A-202	202	SORTI. R	2018	Benggaulu	1° 42' 54.865"	119° 23' 32.469"	0.70	-	-	-	0.00	-	17-Jul-2022	-
285	KOIPeSS-06-A-203	203	HAMSA	2009	Benggaulu	1° 42' 45.008"	119° 23' 31.868"	1.63	1.63	31.97	19.61	33.54	20.58	17-Jul-2022	-
286	KOIPeSS-06-A-204	204	RADDING	2012	Benggaulu	1° 43' 47.250"	119° 24' 24.593"	1.95	1.95	32.57	16.70	34.17	17.52	17-Jul-2022	-
287	KOIPeSS-06-A-205	205	JASMIN	2012	Benggaulu	1° 42' 54.670"	119° 23' 27.791"	1.23	1.23	21.48	17.46	22.53	18.32	17-Jul-2022	-
288	KOIPeSS-06-A-206	206	KARIM 1	2015	Benggaulu	1° 43' 48.262"	119° 24' 54.327"	0.68	0.68	10.15	14.93	10.65	15.66	17-Jul-2022	-
289	KOIPeSS-06-B-206		KARIM 2	2012	Benggaulu	1° 43' 24.505"	119° 25' 12.746"	1.01	1.01	18.03	17.85	18.91	18.72	17-Jul-2022	-
290	KOIPeSS-06-A-207	207	RAZAK	2006	Benggaulu	1° 43' 50.432"	119° 23' 51.810"	1.17	1.17	25.38	21.69	26.62	22.75	17-Jul-2022	-
291	KOIPeSS-06-A-208	208	SIMON P	2011	Benggaulu	1° 42' 55.482"	119° 24' 9.992"	2.07	2.07	36.23	17.50	38.01	18.36	17-Jul-2022	-
292	KOIPeSS-06-A-209	209	SAPARUDDIN MD	2009	Benggaulu	1° 43' 56.040"	119° 24' 23.519"	1.01	1.01	21.44	21.23	22.49	22.27	17-Jul-2022	-
293	KOIPeSS-06-A-210	210	ZUL-KIFLI	2014	Benggaulu	1° 42' 43.726"	119° 23' 25.788"	1.13	1.13	18.90	16.73	19.83	17.55	17-Jul-2022	-
294	KOIPeSS-06-A-211	211	SYAHRUL B1	2014	Benggaulu	1° 42' 58.661"	119° 23' 54.648"	0.91	0.91	16.07	17.66	16.86	18.53	17-Jul-2022	-
295	KOIPeSS-06-B-211		SYAHRUL B2	2014	Benggaulu	1° 42' 31.742"	119° 23' 11.610"	1.02	1.02	17.37	17.03	18.22	17.86	17-Jul-2022	-
296	KOIPeSS-06-A-212	212	ANTON SEHO 1	2011	Benggaulu	1° 45' 32.008"	119° 24' 36.221"	1.99	1.99	34.63	17.40	36.33	18.26	17-Jul-2022	-
297	KOIPeSS-06-B-212		ANTON SEHO 2	2011	Benggaulu	1° 42' 7.230"	119° 25' 17.398"	0.95	0.95	17.78	18.72	18.65	19.63	17-Jul-2022	-
298	KOIPeSS-07-A-213	213	SYAMSUL BAHRI	2014	Benggaulu	1° 45' 28.412"	119° 23' 44.571"	0.67	0.67	12.64	18.87	13.26	19.79	17-Jul-2022	-
299	KOIPeSS-07-A-214	214	MUH. GUFRAN	2014	Benggaulu	1° 46' 6.067"	119° 25' 17.816"	0.52	0.52	10.21	19.63	10.71	20.60	17-Jul-2022	-
300	KOIPeSS-07-A-215	215	JAMALUDDIN C	2015	Benggaulu	1° 44' 40.288"	119° 23' 39.790"	0.99	0.99	13.17	13.30	13.82	13.96	17-Jul-2022	-
301	KOIPeSS-07-A-216	216	LAUDIN	2017	Benggaulu	1° 44' 45.689"	119° 22' 56.075"	1.15	1.15	12.10	10.52	12.69	11.03	17-Jul-2022	-
302	KOIPeSS-07-A-217	217	HJ. SURIANTI	2017	Benggaulu	1° 45' 28.589"	119° 23' 5.709"	0.66	0.66	8.53	12.92	8.95	13.56	17-Jul-2022	-
303	KOIPeSS-07-A-218	218	SAPIANA	2017	Benggaulu	1° 45' 16.265"	119° 23' 45.868"	0.38	0.38	5.70	15.00	5.98	15.74	17-Jul-2022	-
304	KOIPeSS-07-A-219	219	ISKANDAR	2014	Benggaulu	1° 45' 17.087"	119° 24' 19.399"	0.27	0.27	6.56	24.30	6.88	25.48	17-Jul-2022	-
305	KOIPeSS-07-A-220	220	JAMALUDDIN D	2014	Benggaulu	1° 46' 8.265"	119° 25' 8.028"	0.44	0.44	9.05	20.57	9.49	21.57	17-Jul-2022	-
306	KOIPeSS-07-A-221	221	MUH.RAMLI	2018	Benggaulu	1° 41' 20.970"	119° 25' 20.331"	0.89	-	-	-	0.00	-	17-Jul-2022	-
307	KOIPeSS-07-A-222	222	SULHAMIANI	2015	Benggaulu	1° 45' 14.825"	119° 23' 47.644"	0.22	0.22	5.13	23.32	5.38	24.45	17-Jul-2022	-
308	KOIPeSS-07-A-223	223	LABIDING	2014	Benggaulu	1° 45' 13.975"	119° 23' 45.003"	0.58	0.58	10.61	18.29	11.13	19.19	17-Jul-2022	-
309	KOIPeSS-07-A-224	224	BAHAR.B	2016	Benggaulu	1° 43' 51.045"	119° 23' 11.165"	0.47	0.47	7.45	15.85	7.82	16.64	17-Jul-2022	-
310	KOIPeSS-07-A-225	225	SALIMA	2016	Benggaulu	1° 44' 21.141"	119° 24' 27.390"	1.50	1.50	17.38	11.59	18.23	12.15	17-Jul-2022	-
311	KOIPeSS-07-A-226	226	KASMUDDIN	2017	Benggaulu	1° 44' 55.036"	119° 23' 1.388"	0.64	0.64	7.91	12.36	8.30	12.97	17-Jul-2022	-
312	KOIPeSS-07-A-227	227	NABARIAH	2017	Benggaulu	1° 44' 53.813"	119° 23' 3.564"	0.74	0.74	8.78	11.86	9.21	12.45	17-Jul-2022	-

No.	No. ID	No. Of member	Smallholder Name	Planting Years	Location	Coordinate		Area		Actual FFB	Yield	Projection FFB	Yield	Date of Joining	Date of Leaving
					Village	Latitude (S)	Longitude (E)	Total Area	Production Area	production (MT/Year)	(MT/Ha/ Year)	Production (MT/Year)	(MT/ Ha/ Year)		
Dapurang Sub District, Sulawesi Barat, Indonesia															
313	KOIPSS-07-A-228	228	HAMSIR	2015	Benggaulu	1° 45' 6.722"	119° 22' 42.194"	0.65	0.65	9.60	14.77	10.07	15.49	17-Jul-2022	-
314	KOIPSS-07-A-229	229	SARIF	2015	Benggaulu	1° 45' 6.672"	119° 23' 19.682"	0.52	0.52	8.36	16.08	8.77	16.87	17-Jul-2022	-
315	KOIPSS-07-A-230	230	MUHTAR	2015	Benggaulu	1° 44' 52.756"	119° 23' 0.051"	0.97	0.97	13.67	14.09	14.34	14.78	17-Jul-2022	-
316	KOIPSS-07-A-231	231	NASRUL	2013	Benggaulu	1° 45' 19.005"	119° 23' 37.487"	0.53	0.53	10.75	20.28	11.28	21.28	17-Jul-2022	-
317	KOIPSS-07-A-232	232	HAMZAH	2013	Benggaulu	1° 45' 14.843"	119° 23' 27.116"	0.76	0.76	13.78	18.13	14.46	19.03	17-Jul-2022	-
318	KOIPSS-07-A-233	233	H, DA'AMIN	2013	Benggaulu	1° 45' 15.299"	119° 23' 29.673"	0.74	0.74	13.93	18.82	19.61	26.50	17-Jul-2022	-
319	KOIPSS-07-A-234	234	BAHARUDDIN TR	2012	Benggaulu	1° 43' 33.978"	119° 23' 53.825"	0.55	0.55	11.23	20.42	16.20	29.45	17-Jul-2022	-
TOTAL								412.03	382,38	6,187.39	16.18	6,500	17.00	-	-

*a value of 0.00 on FFB production because the plants are still immature (TBM)

