

*Roundtable on Sustainable Palm Oil Certification  
R S P O*

**[ ✓ ] Milestone-B**

Name of Management Organisation : Perkumpulan Sejahtera Pelita Nusantara  
 Plantation Name : Perkumpulan Sejahtera Pelita Nusantara  
 Location : Village of Seureuke, Sub District of Langkahan, District of Aceh Utara, Province of Aceh, Indonesia  
 Certificate Code : MUTU-RSPO/189  
 Date of Certificate Issue : 22 September 2023      Date of License Issue : 22 September 2023  
 Date of Certificate Expiry : 21 September 2028      Date of License Expiry : 21 September 2024

Assessment	Assessment Date	PT. Mutuagung Lestari Auditor	Reviewed by	Approved by
MS-B	28– 31 August 2023	Leonada (Lead Auditor Witnessing), Kiki Fadli (Lead Auditor Witnessed), Ririn Sipayung and Andre Bona Pardede	Harso Yuli Natena	Octo HPN Nainggolan

Assessment	Approved by MUTUAGUNG LESTARI on:
MS-B	22 September 2023

**TABLE OF CONTENT****FIGURE**

Figure 1. Location Map of Perkumpulan Sejahtera Pelita Nusantara	01
Figure 2. Operational Map of Perkumpulan Sejahtera Pelita Nusantara	02

Abbreviations Used	03
--------------------	----

**1.0 SCOPE of the CERTIFICATION ASSESSMENT**

1.1 Assessment Standard Used	04
1.2 Organization Information	04
1.3 Type of Assessment	04
1.4 Location of Plantations	04
1.5 Description of Area Statement	04
1.6 Planting Year and Cycles	04
1.7 Description of Supply Base	05
1.8 Tonnage Product	05
1.9 Other Certification	06

**2.0 ASSESSMENT PROCESS**

2.1 Assessment Team	07
2.2 Assessment Methodology, Assessment Process and Locations of Assessment	07
2.3 Stakeholder Consultation and Stakeholders Contacted	09
2.4 Determining Next Assessment	09

**3.0 ASSESSMENT FINDINGS**

3.1 Summary of Assessment Report of the RSPO Certification	10
3.2 Conformity Checklist of Certificate and Logo Use	37
3.3 Identification of Findings, Corrective Actions, Observations, Opportunity for Improvement and Noteworthy Positive Components	38
3.4 Summary of Arising Issues from Public and Auditor Verification	45

**4.0 CERTIFIED ORGANISATION'S ACKNOWLEDGEMENT OF INTERNAL RESPONSIBILITY**

4.1 Formal Signing of Assessment Findings	47
-------------------------------------------	----

**APPENDICES**

1. List of Stakeholders Contacted in the RSPO Certification Process	48
2. Assessment Program	49
3. Smallholders Data	50

Figure 1. Location Map of Perkumpulan Sejahtera Pelita Nusantara

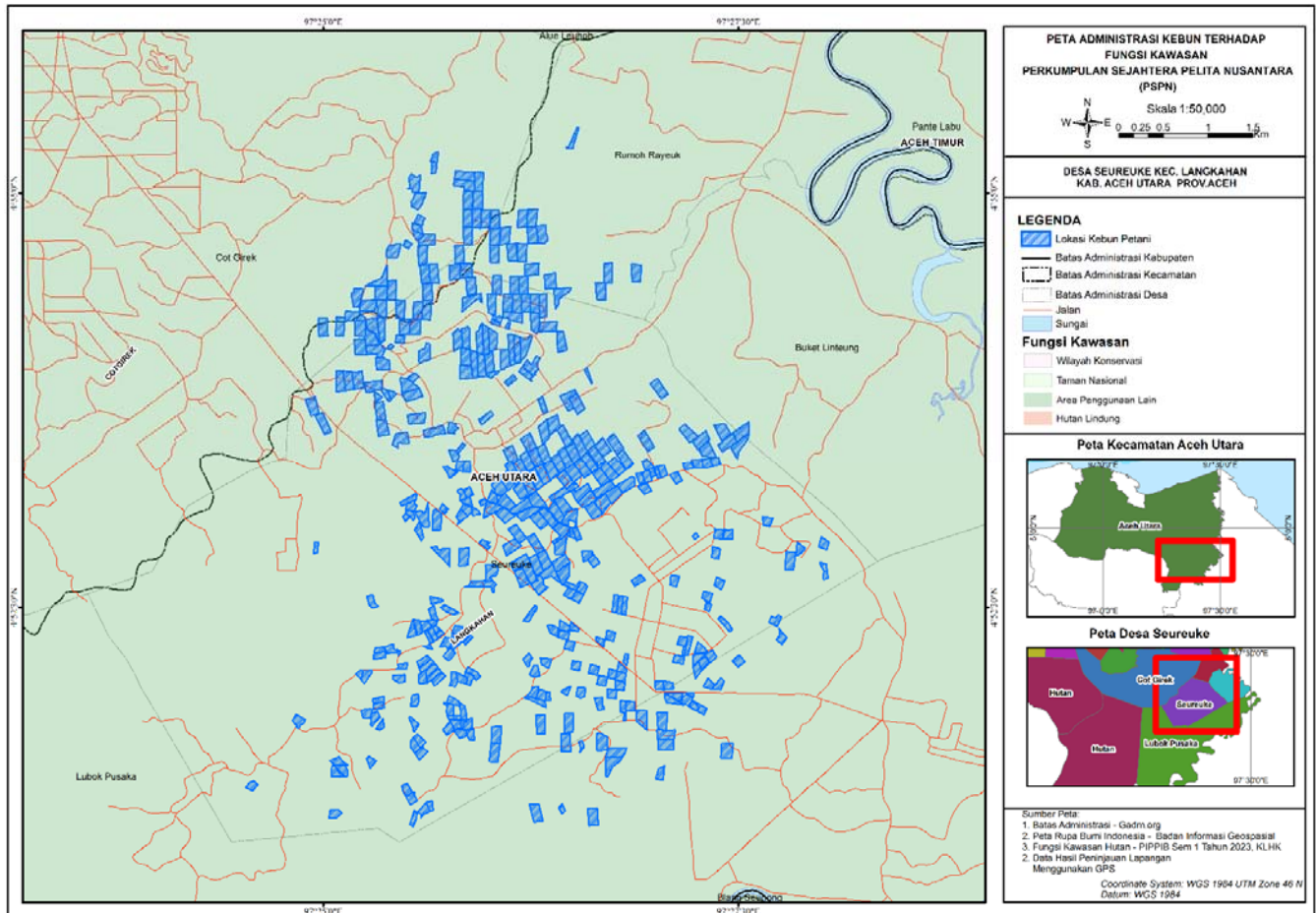
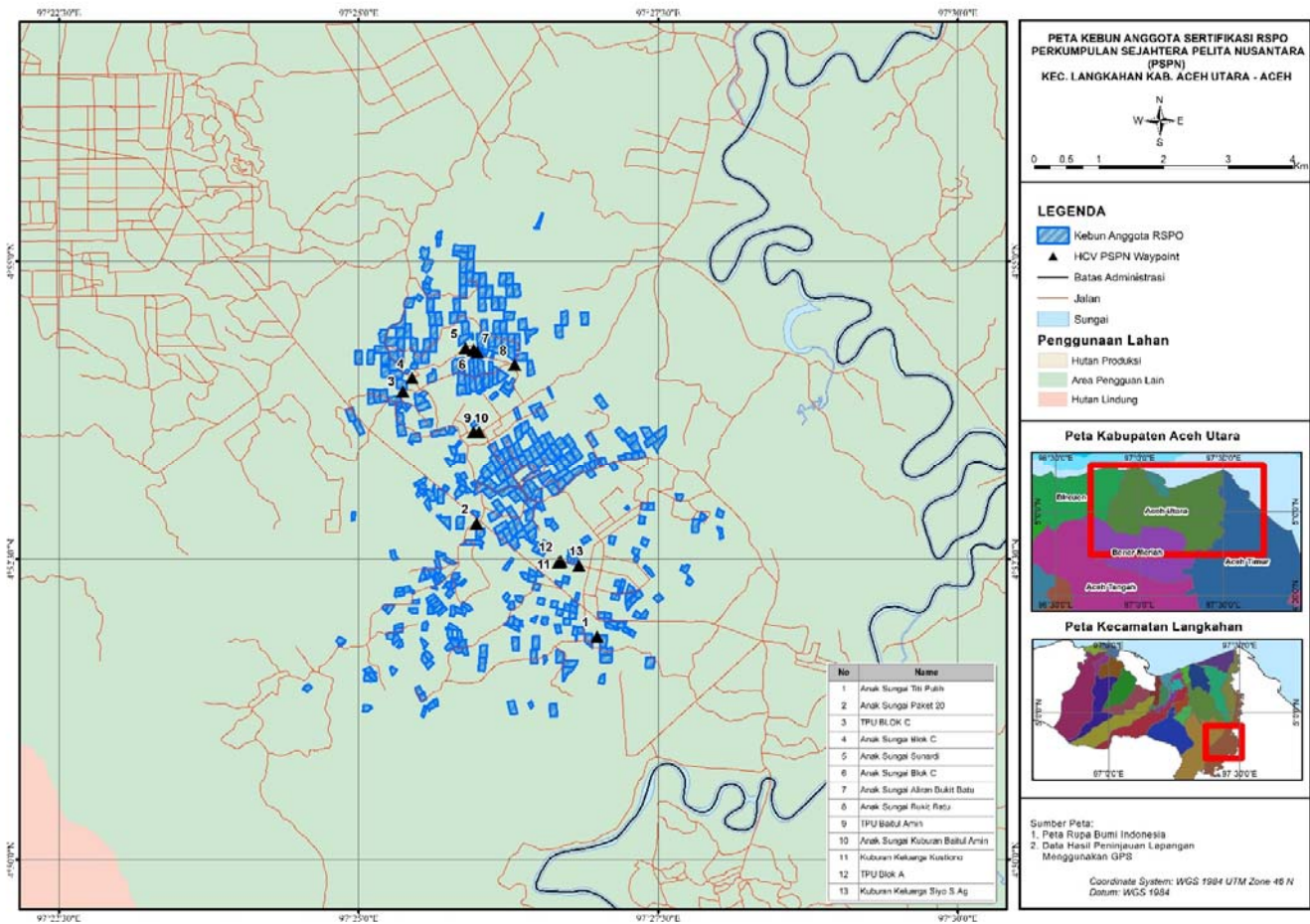


Figure 2. Operational Map of Perkumpulan Sejahtera Pelita Nusantara



Abbreviations Used

AD / ART	:	<i>Anggaran Dasar / Anggaran Rumah Tangga</i> (Memorandum of Association / Article of Association)
APL	:	<i>Areal Penggunaan lain</i> (Other use area)
BPN	:	<i>Badan Pertanahan Nasional</i> (Land Agency)
CMT	:	<i>Cut Meutia</i> (Farmer Group)
CND	:	<i>Cut Nyak Dien</i> (Farmer Group)
CPO	:	Crude Palm Oil
DLH	:	<i>Dinas Lingkungan Hidup</i> (Environmental Department)
DPLH	:	Environment Management Document
DPMPSTP	:	<i>Dinas Penanaman Modal dan Pelayanan Terpadu Satu Pintu</i>
EFB	:	Empty Fruit Bunch
FFB	:	Fresh Fruit Bunches
FPIC	:	Free Prior and Informed Consent
GHG	:	Green House Gases
HCV	:	High Conservation Value
HIRAC	:	Hazard Identification Risk Assessment and Risk Control
ICS	:	Internal Control System
LUCA	:	Land Use Change Analysis
NPWP	:	<i>Nomor Pokok Wajib Pajak</i> (Tax Identification Number)
OER	:	Oil Extraction Rate
OFI	:	Opportunity of Improvement
OHS	:	Occupational Health and safety
PIC	:	Person in Charge
PIPIB	:	<i>Perubahan Peruntukan Kawasan Hutan Baru pada Hutan Alam Primer dan Lahan Gambut</i> (Changes in the Allocation of New Forest Areas to Primary Natural Forests and Peatlands)
PK	:	Palm Kernel
PPE	:	Personal Protection Equipment
PSPN	:	<i>Perkumpulan Sejahtera Pelita Nusantara</i>
RACP	:	Remediation and Compensation Plan
RSPO	:	<i>Roundtable on Sustainable Palm Oil</i>
RTE	:	Rare, Threatened or Endangered
RTRW	:	<i>Rencana Tata Ruang Wilayah</i> (regional space order plan)
SCCS	:	Supply Chain Certification Standard
SIM	:	Sultan Iskandar Muda Farmer Group
SHM	:	<i>Sertifikat Hak Milik</i> (Freehold Title)
SKGR	:	<i>Surat Keterangan Ganti Rugi</i> (Land Compensation Certificate)
SKT	:	<i>Surat Kepemilikan Tanah</i> (Land Ownership Certificate)
SOP	:	Standard Operational and Procedure
SPKS	:	<i>Serikat Petani Kelapa Sawit</i>
SPPL	:	<i>Surat Pernyataan Pengelolaan Lingkungan</i> (Statement of Environment Management)
STDB	:	<i>Surat Tanda Daftar - Budidaya Perkebunan</i>
SPPHAT	:	<i>Surat Pelepasan Pengakuan Hak Atas Tanah</i>

1.0	SCOPE of the CERTIFICATION ASSESSMENT		
1.1	Assessment Standard Used	<ul style="list-style-type: none"> <li>RSPO Certification Systems for Principles &amp; Criteria and RSPO Independent Smallholder Standard Endorsed by the RSPO Board of Governors on 12 November 2020</li> <li>RSPO Independent Smallholder Standard, Indonesia National Interpretation for the Production of Sustainable Palm Oil 2020, endorsed by the RSPO Board of Governors on 14 February 2022</li> </ul>	
1.2	Organization Information		
1.2.1	Organization name listed in the certificate	Perkumpulan Sejahtera Pelita Nusantara	
1.2.2	Contact person	-	
1.2.3	Organization address and site address	Village of Seureuke, Sub District of Langkahan, District of Aceh Utara, Province of Aceh, Indonesia	
1.2.4	Telephone	-	
1.2.5	Fax	-	
1.2.6	E-mail	sj.pelitanusantara@gmail.com	
1.2.7	Web page address	-	
1.2.8	Management Representative who completed the application for certification	Sudikan	
1.2.9	Registered as RSPO member	1-0448-23-000-00, 25 May 2023	
1.3	Type of Assessment		
1.3.1	Scope of Assessment and Number of Management Unit	Perkumpulan Sejahtera Pelita Nusantara (PSPN) consist of 270 Smallholders with total of 568.655 Ha.	
1.3.2	Type of certificate	Single	
1.4	Locations of Plantation		
1.4.1	Location of Certification Scope of Supply Base		
	Name of Smallholder Organization	Location	Coordinate
			Latitude Longitude
	Perkumpulan Sejahtera Pelita Nusantara	Village of Seureuke, Sub District of Langkahan, District of Aceh Utara, Province of Aceh, Indonesia	4° 52' 28.4" N 97° 27' 02.3" E
1.5	Description of Area Statement		
1.5.1	Tenure		
	• State	- Ha	
	• Community	568.655 Ha	
1.5.2	Area Statement		
	• Total area	568.655 Ha	
	• Mature area	428.200 Ha	
	• Immature area	140.455 Ha	
1.6	Planting Year and Cycles		



1.6.1	Age profile of planting year				
	Planting Year	Hectarage (Ha)			
		PSPN		Total	
	1985	0.988		0.988	
	1990	1.000		1.000	
	1991	128.570		128.570	
	1992	4.750		4.750	
	1993	1.000		1.000	
	1994	53.837		53.837	
	1995	10.400		10.400	
	1996	3.542		3.542	
	1997	4.000		4.000	
	1998	1.930		1.930	
	1999	3.000		3.000	
	2000	3.300		3.300	
	2003	0.590		0.590	
	2004	3.680		3.680	
	2005	3.550		3.550	
	2006	4.810		4.810	
	2007	9.781		9.781	
	2008	20.162		20.162	
	2009	5.287		5.287	
	2010	30.007		30.007	
	2011	13.066		13.066	
	2012	18.312		18.312	
	2013	12.284		12.284	
	2014	12.110		12.110	
	2015	13.950		13.950	
	2016	2.560		2.560	
	2017	11.406		11.406	
	2018	15.394		15.394	
	2019	34.934		34.934	
	Sub Total Mature	428.200		428.200	
	2020	138.176		138.176	
	2021	2.279		2.279	
	Sub Total Immature	140.455		140.455	
	TOTAL	568.655		568.655	
1.6.2	New Planting area after January 2010	89.83 Ha			
1.6.3	Planting Cycle	2 <sup>nd</sup> Cycle			
1.7	Description of Supply Base				
1.7.1	Description of Certification Scope of Supply Base				
	Name of Smallholder Organisation	Total Area (Ha)	Production Area (Ha)	FFB (tonnes/year)	Yield (tonnes/ha/year)
	Perkumpulan Sejahtera Pelita Nusantara	568.655	428.200	4,664.28	18.67
	*Data FFB period from January - July 2023, its due to the association January 2023				
	**Yield calculated based on formul : production from January – July 2023 : 07 x 12				
1.8	Tonnage of Product				

1.8.1	Past Annual Claim Certified Product		Last Year Projected Certified Volume (MT)		Last Year Actual Certified Volume (MT)		
	• FFB Production		-		-		
	• CSPO Production		-		-		
	• CSPKE Production		-		-		
	• CSPKO Production		-		-		
*Will be verified at ASA-1							
1.8.2	Product selling						
	Tonnage of selling product			Actual selling product for last year			
	• IS-CSPO sold as RSPO Credit			-			
	• IS-CSPK sold as RSPO Credit			-			
	• IS-CSPKE sold as RSPO Credit			-			
	• FFB sold as RSPO Certified Product			-			
	• FFB sold under another scheme			-			
	• FFB sold as conventional			-			
1.8.3	Estimate Certified FFB Claim						
	Name of Smallholder Organization		Total Area (Ha)	Production Area (Ha)	FFB (tonnes/year)	Yield (tonnes/ha/year)	
	Perkumpulan Sejahtera Pelita Nusantara		568.655	428.200	8,535.00	19.93	
	*Data period from August 2023 - July 2024						
1.8.4	Estimate Certified Palm Product Claim						
	FFB Processed (tonnes/year)	CSPO		CSPKE		CSPKO	
		Out put (tonnes)	Extraction (%)	Out put (tonnes)	Extraction (%)	Out put (tonnes)	Extraction (%)
	-	-	-	-	-	-	-
	*Extraction of CSPO, CSPKO and CSPKE from document "A seller Guide to RSPO Credits						
	**Projected CSPO, CSPKO & CSPKE production for 12 months of certificate						
1.9	Other Certifications						
	Others			-			



2.0	<b>ASSESSMENT PROCESS</b>
2.1	<b>Assessment Team</b>
MS-B	<p>1. <b>Leonada (Lead Auditor)</b>. Bachelor of Agriculture, Department of Agricultural Cultivation, Faculty of Agriculture, Plant Breeding and Seed Technology Study Program, Bogor Agricultural University. Has more than five years working experience as a plantation operations and sustainability staff in a private Indonesian oil palm plantation company. Trainings that have been attended include: Indonesian Sustainable Palm Oil (ISPO) Auditor Training, RSPO Lead Auditor, ISO 17021; 2011, ISO 17065; 2012, ISO 19011; 2011, ISO 9001 Lead Auditor; 2008, ISO 14001; 2005, Training Management Deployment Program Agronomy, analysis base solution for operation, Training on peat management for oil palm, Training on Integrated Plant Pest and Weed Control (IPM), Training on Limited Use of Pesticides, Training on Pesticide and Fertilizer Waste Management, Mediation training and conflict resolution, training for General OSH Expert, RSPO SCC and ISH Lead auditor training organized by RSPO, OHS management system Auditor and currently working for an independent certification body as an auditor.</p> <p>2. <b>Kiki Fadli (Auditor)</b>. Indonesian citizen, Bachelor of Agricultural Engineering, Agricultural Engineering Study Program. Has experience working in the Department of Sustainability in private and state-owned oil palm plantations. Has attended ISPO New Refreshment Lead Auditor training, RSPO Lead Auditor, General OHS Expert, ISO 9001:2008, ISO 14001:2015, ISO 17021, ISO 17065, HCV, OHS management system, RSPO SCC and ISH Lead auditor training organized by RSPO. During this assessment, he verified the Legal, Social, BMP, OHS, SCCS and ICS.</p> <p>3. <b>Ririn Sipayung (Auditor)</b>. Experience working as a Sustainability Assistant for 6 years in several private oil palm plantation companies in Indonesia. The training that has been attended includes Training Lead Auditor 9001: 2015 IRCA, Refreshment New ISPO (PERMENTAN 38 Year 2020), Awareness (ISO 9001, ISO 14001, ISO 45001: 2018, ISO 19011: 2018, ISO 17021: 2015, ISO 17065 : 2012), In House Training (Best Management Practice, Environment, Labor, Social, and Transparency), Prospective Occupational Safety and Health Expert by KEMENAKER RI, ISPO Auditor Certification by LPP and ISPO Commission, ISH Lead auditor training organized by RSPO, Traceability Supply Chain and Smallholder Engagement and so on. During this assessment, he verified the Environmental and Conservation and worker welfare</p> <p>4. <b>Andre Bona Tito Pardede (Auditor Trainee)</b>. Indonesian Citizen, with a Bachelor of Agriculture from a university in Indonesia. Experience working in private oil palm plantation companies in Indonesia as an Assistant in Sustainable and Internal Audit Agronomy. The training that has been attended includes ISO 9001: 2015 By IRCA, ISPO Auditor Certification, Awareness ISO 17021, Awareness ISO 9001, Awareness ISO 14001, Awareness ISO 45001, and Awareness ISO 19011. Has attended several simulations of audit activities related to the certification system for sustainable oil palm plantations with aspects of Environmental and Conservation. In this audit activity, verify BMP and OHS aspects under the supervision of the lead auditor.</p> <p>Curriculum vitae (CV) of the members and the assessment team is available at the PT Mutuagung Lestari office.</p>
2.2	<b>Assessment Methodology, Assessment Process and Locations of Assessment</b>
2.2.1	<b>Figure of person days to implement assessment</b>
MS-B	<p>Number of auditors: 2 auditors and 1 auditor trainee          Number of days for MS-B at site: 4 days          Number of working days for MS-B at site: 8 Working days</p>
2.2.2	<b>Assessment Process</b>
MS-B	<p>The assessment was conducted by measuring the sufficiency of implementation with the consistency done by the Perkumpulan Sejahtera Pelita Nusantara to the requirements of RSPO Independent Smallholder Standard, Indonesia National Interpretation for the Production of Sustainable Palm Oil 2020, endorsed by the RSPO Board of Governors on 14 February 2022 and RSPO Certification Systems for Principles &amp; Criteria and RSPO Independent Smallholder Standard Endorsed by the RSPO Board of Governors on 12 November 2020.</p> <p>This assessment conducted for previous scope at Milestone-B assessment of 270 smallholders (402 land plots) with 568.655 Ha which is divided into 5 farmer groups (Cut Meutia, Cut Nyak Dien, Sultan Iskandar Muda, Teuku Chik Diktiro,</p>

Teuku Umar). The assessment was conducted in three methods: (1) document review, aiming to observe the sufficiency of types or substances from required documents; (2) *interview*, aiming to obtain more detailed information and cross check the information; and (3) field observation, aiming to observe directly the sufficiency of implementation on site.

Some opportunities for improvement of the results MS-B delivered by the MUTU auditor to the management unit and the results are the subject will be verified at the next assessment phase (ASA-1).

Improvement of findings from main assessment findings were observed by auditors at this MS-B assessment. All information obtained was recorded in Check List of PT Mutuagung Lestari (MUTU) and part of MS-B.

Team of auditor started their trip from Jakarta to Smallholder office and continued to site. Opening Meeting in the Meeting Room of Smallholder Office. Opening meeting was attended by head of organization, ICS and other related personnel.

Public Stakeholder Notification was made on 29 August 2023. There is no written negative feedback receive. Stakeholder consultation involved external stakeholders.

Meetings were held with stakeholders to seek their views on the performance of the company with respect to the RSPO requirements and aspects where they considered that improvements could be made. At the start of each meeting, the interviewer explained the purpose of the audit followed by an evaluation of the relationship between the stakeholder and the company before discussions proceeded. The interviewer recorded comments made by stakeholders and these have been incorporated into the assessment findings. The comments made by external stakeholders were also taken into account in the assessment.

Interviews with landowners who manage their own land and use workers were conducted privately and also took into account the gender of the landowner. Apart from that, ICS administrators were also interviewed informally. The list of Stakeholders contacted is listed in Appendix 1.

The assessment program please find Appendix 2.

**2.2.3 Locations of Assessment**

**MS-B** This assessment was conducted with scope of certification 568.655 Ha, 270 members and 402 land Plots. The location of assessment was divided on 1 village. During this assessment the association considered medium risk, its due to there is considerable heterogeneity in the Group (e.g., members are geographically or jurisdictionally separated from one another, a range of terrains, varying levels of experience of oil palm cultivation among members, diverse sizes of plantations, a range of socio economic situations among members, etc.). Sampling method for MS-B:  $\sqrt{270} \times (1.2) = 19.72$  members. Based on these calculations, the sample of audit of 21 farmers.

The sampling location consider the issue arose from the review documents, Farmers Group distribution and stakeholder's consultation that are fundamental and crucial. The smallholders and locations visited by auditor among other:

No	Name	ID	Purpose
<b>Cut Meutia Farmers Group</b>			
1	Sunardi B	F1108000157175	Field Observation and interview related to best practices, legality, environmental, worker welfare, and boundaries marking.
2	Sri Amurni	F1108000167448	
3	Sudikan	F1108000152521	
4	Tardi	F1108000154975	
5	Sri Dahniar	F1108000168237	
6	Abdurrahman	F1108000153760	
7	Cucuk Sutarno	F1108000154093	
<b>Cut Nyak Dien Farmers Group</b>			
1	Hadi Sucipto 1	F1108000153155	Field Observation and interview related to best practices, legality, environmental, worker welfare, and boundaries marking.
2	Asroi	F1108000152047	
3	Edi Karyawanto	F1108000154983	
4	Firmanto	F1108000154165	

	5	M Abdurrahman	F1108000152050	
	6	Suryani	F1108000170109	
	7	Siti Hadizah	F1108000170038	
	<b>Sultan Iskandar Muda Farmers Group</b>			
	1	Mardian	F1108000166816	Field Observation and interview related to best practices, legality, environmental, worker welfare, and boundaries marking.
	2	Edi Mulya Beti A.Md. 4	F1108000166005	
	3	Ngatiran 2	F1108000158890	
	4	Sodikin	F1108000166121	
	5	Dewi	F1108000169909	
	6	Ruadi	F1108000165488	
	7	Sri Ismawati	F1108000165509	
	<b>Warehousing</b>			
	1	Fertilizer warehouse and Chemical warehouse	PSPN	Field Observation and interview related to Fertilizer warehouse and chemical warehouse handling
	2	Hazardous storage	PSPN	Field Observation and interview related to hazardous waste handling
2.3	<b>Stakeholder Consultation and Stakeholders Contacted</b>			
2.3.1	Summary of stakeholder consultation process.			
MS-B	Consultation of stakeholders for Perkumpulan Sejahtera Pelita Nusantara (PSPN) was held by: <ul style="list-style-type: none"> <li>• Public announcement on MUTU and RSPO websites on 17 July 2023</li> <li>• Public consultation with government agencies of Aceh Utara District (Agriculture Agency, Land Agency, and Environmental Agency) on 29 and 30 August 2023.</li> <li>• Public consultation meeting with village representatives (Seureuke Village) on 29 August 2023.</li> <li>• Consultation with NGO (WWF, Sawit Watch, Wahana Lingkungan Hidup Indonesia, dan AMAN) via email on 22 August 2023.</li> </ul> Numbers of input from stakeholders were clarified by Perkumpulan Sejahtera Pelita Nusantara (PSPN) as a part of this report.			
2.3.2	Stakeholder contacted			
	Please find appendix 1			
2.4	<b>Determining Next Assessment</b>			
	The next visit (ASA-1) will be conducted eight (8) months to twelve (12) months after issuance of certificate.			

**3.0 ASSESSMENT FINDINGS**

**3.1 Summary of Assessment Report of the RSPO Certification**

MUTUAGUNG LESTARI has conducted an assessment of Perkumpulan Sejahtera Pelita Nusantara (PSPN) operation consisting of Two Hundred Seventy (270) smallholders.

During the assessment, there were two (2) nonconformities were assigned against Major Compliance Indicators; and four (4) opportunities for improvement were identified.

Further explanation of the non-conformities raised and corrective actions taken by the company are provided in section 3.3. The smallholder has already prepared and implemented the corrective action that had been reviewed and accepted by Auditor in form of documentation evidences e.g. (document record/photographic/etc). Those corrective actions taken that consist of two (3) Minor non-conformities had been closed out shall be verified during next assessment.

MUTUAGUNG LESTARI found that Perkumpulan Sejahtera Pelita Nusantara complied with the requirements of RSPO Independent Smallholder Standard, Indonesia National Interpretation for the Production of Sustainable Palm Oil 2020, endorsed by the RSPO Board of Governors on 14 February 2022 and RSPO Certification Systems for Principles & Criteria and RSPO Independent Smallholder Standard Endorsed by the RSPO Board of Governors on 12 November 2020.

Therefore, MUTUAGUNG LESTARI Recommends RSPO Certification of compliance is issued

**3.1.1 The system requirements for Group Formation and Management (including the Internal Control System) that are only applicable to the group manager.**

Ref Std.	VERIFICATION RESULT of MUTU-Certification
<b>A – ICS: Group Entity and Group Management Requirements</b>	
<b>A.1 The Group demonstrates that they are legally formed</b>	
<p><b>A.1.1</b> E PSPN (Smallholder) presented a joint declaration on the appointment of a group manager on September 7 2022 which explains that the composition of the association's management is as follows:</p> <ul style="list-style-type: none"> <li>• Chairman is Sudikan</li> <li>• Secretary is Andi Suryandi</li> <li>• Treasurer is Ageng Prasetia Aji</li> </ul> <p>Based on interviews with farmers, it was reported that the members had agreed to appoint PSPN administrators.</p> <p>Apart from that, PSPN (Smallholder) also shows the composition of the ICS management as follows:</p> <ul style="list-style-type: none"> <li>• Chairman is Sudikan</li> <li>• Secretary is Andi Suryandi</li> <li>• Treasurer is Ageng Prasetia Aji</li> <li>• Registration unit, suggestions and complaints</li> <li>• FFB marketing monitoring unit</li> <li>• Fire emergency unit</li> <li>• Supervisory Board</li> <li>• Internal audit unit</li> <li>• Integrated pest control unit</li> <li>• Environment Unit</li> <li>• OHS, fertilizer and chemical monitoring unit</li> <li>• 5 heads of farmer groups</li> </ul>	

**MS-A & MS-B**

Same as E.

**A.1.2**

E

PSPN (Smallholder) has legal documents including the following:

- Deed of Establishment of the Association with No. 07 dated 5 October 2020 by Notary & PPAT Erika Herawati., SH., M.Kn
- Decree of the Minister of Law and Human Rights of the Republic of Indonesia No. AHU-0009435.AH.01.07 of 2020 dated 26 October 2020 concerning ratification of the establishment of the Perkumpulan Sejahtera Pelita Nusantara (PSPN) legal entity.
- NPWP PSPN with No. 96,734,830.1-102,000.
- PSPN's Memorandum of Association / Article of Association published on October 5 2020.

**MS-A & MS-B**

Same as E.

**A.1.3**

E

PSPN (Smallholder) shows the SOP Criteria and Requirements for New Members with No. 01/SOP-U-PELPED/X/2022 dated 3 October 2022 which explains the requirements for prospective new members such as:

**1. Criteria for Prospective New Members**

- Have clear land legality as proven by land ownership certificate.
- Land cannot be in peat areas, forest areas or in conflict.

**2. Completing the Requirements**

- Submit photocopies of ID Card, Family Card, photos and land ownership certificates.
- Fill out the member registration certificate form, willingness to participate in the RSPO form, grower statement form, land tenure history form and land settlement conflict recording form.

Based on document verification and interviews with the management, it is known that each prospective member has been evaluated and the prospective member requirements files have been archived by the ICS management.

**MS-A & MS-B**

Same as E.

**A.1.4**

E

Based on the results of the document review, it is known that all members (270 farmers) have signed the membership requirements listed in the farmer statement, for example signed by a farmer with Tardi from the Cut Meutia Farmers Group on October 7 2022 and Firmanto from the Cut Nyak Dien Farmers Group on the October 5 2022 which contains, among other things:

- Understand the importance of sustainable production.
- Smallholders will join smallholder groups to undertake self-help group certification against the RSPO Independent Smallholder Standard and comply with relevant principles, criteria and indicators.
- Farmers will provide information - information to group managers such as information on land ownership, location coordinates, land ownership status, any disputes regarding existing land and so on.
- Smallholder commitment to comply with the requirements of the RSPO principles and criteria such as not doing forced labor, paying wages according to the minimum wage, not discriminating, not using paraquat, attending training, etc.

Based on the results of the Group Interview with 21 sample farmers, it was announced that all members had agreed and signed the membership requirements letter. Members also understand the requirements and commitments that must be met when joining PSPN.

**MS-A & MS-B**

PSPN (Smallholder) shows the SOP Criteria and Requirements for New Members with No. 01/SOP-U-PELPED/X/2022 dated 3 October 2022 which explains the requirements for new prospective members such as filling out the member registration form, farmer statement form and land tenure history form (Land Dispute).

The results of interviews with sample farmers in the CMT, CND and SIM farmer groups revealed that the farmers had not signed and were not aware of the land tenure history form (Land Dispute), and at the time of the audit, evidence could not be shown that the land tenure history form was available (Land Dispute) signed by farmers, the ICS team and third parties.

Based on this, the PSPN (Smallholder) has not been able to show proof that the membership requirements have been signed, especially regarding the land tenure history form (Land Dispute), so this is a **non-conformity No. 2023.01 with the Major category**.

A.1.4	Status: Non-conformity No. 2023.01 with the Major category	
-------	------------------------------------------------------------	--

**A.2**  
**The Group Manager is responsible for managing the Group for certification**

**A.2.1**

**E**

PSPN (smallholder) has an ICS work plan for the 2022-2023 period such as:

- Meetings with administrators and members
- Verification of registration of potential member farmers
- Trainings for members
- Internal audits
- Etc.

The plan is also evaluated every semester to ensure the achievement of future plans and follow-up, for example, which was carried out on August 29 2023 which evaluated the work plan for the period 2022 to June 2023 which has realized 26 activities out of 30 planned activities.

**MS-A & MS-B**

PSPN (smallholder) has an ICS work plan for the 2022-2023 period such as:

- Meetings with management and members
- Verify the registration of prospective member farmers
- Training for members
- Internal audits
- Etc.

and PSPN (smallholder) also shows the implementation of the work program, for example:

- RSPO P&C socialization on 15-18 March 2023 which was attended by 76 people.
- Socialization on OHS and child labor on March 2 2023, which was attended by 30 participants.
- Socialization of the Use of RSPO Credit Sales Funds (premiums) on 23 August 2023 which was attended by 56 participants.

Based on interviews with association members, it is known that they understand ICS, such as SOPs and PSPN policies. Apart from that, based on the evaluation of the ICS plan, there are still several plans that have not been realized, such as several socializations that are still being carried out in stages by the ICS management to all members and this has become OFI in indicator A.2.3.

Based on the results of the document review, it is known that all members (270 farmers) have signed the membership requirements listed in the farmer statement, for example signed by a farmer with Tardi from the Cut Meutia Farmers Group on October 7 2022 and Firmanto from the Cut Nyak Dien Farmers Group on the October 5 2022 which contains, among other things:

- Understand the importance of sustainable production
- Smallholders will join smallholder groups to undertake self-help group certification against the RSPO Independent Smallholder Standard and comply with relevant principles, criteria and indicators.
- Farmers will provide information - information to group managers such as information on land ownership, location coordinates, land ownership status, any disputes regarding existing land and so on.
- Smallholder commitment to comply with the requirements of the RSPO principles and criteria such as not doing forced labor, paying wages according to the minimum wage, not discriminating, not using paraquat, attending training, etc.

Based on the results of the Group Interview with 21 sample farmers, it was announced that all members had agreed and signed the membership requirements letter. Members also understand the requirements and commitments that must be met when joining PSPN.



**A.2.2****E**

The Group Manager (chairman of the PSPN) has managed as many as 270 members to commit to RSPO independent smallholder standards by signing a farmers' statement in October 2022 which includes a commitment not to use forced labor, pay wages according to the minimum wage, no discrimination, no use of paraquat, participate in training, zero burning, pesticide minimization, etc.

To ensure members understand and implement the agreements that have been made, an ICS team was formed as stated in a joint declaration appointing a group manager on September 7 2022 which explains the composition of the association's management. Apart from that, regular training and outreach has also been carried out for all members.

Based on interviews with group managers, it is known that personnel can explain the commitment of management and members in accordance with RISS and ask members to monitor its implementation in the field.

PSPN (Smallholder) also shows the composition of the ICS management as follows:

- Chairman is Sudikan
- Secretary is Andi Suryandi
- Treasurer is Ageng Prasetia Aji
- Registration unit, suggestions and complaints
- FFB marketing monitoring unit
- Fire emergency unit
- Supervisory Board
- Internal audit unit
- Integrated pest control unit
- Environment Unit
- OHS, fertilizer and chemical monitoring unit
- 5 heads of farmer groups.

Based on interviews with the Group Manager (chairman of the PSPN), it is known that personnel can explain the RISS certification system and all ISH Standard requirements and that each member has been verified as complete to become a member.

**MS-A and MS-B**

During audit activities, PSPN administrators can demonstrate understanding and competence towards RISS, for example demonstrated by:

- Establishment of an organizational structure accompanied by the main duties and functions of each position.
- Conduct field visits to farmers' fields to ensure compliance with ISH standards.
- Implementation of regular and regular socialization and training for all group members.

The Group Manager has managed 270 PSPN members to commit to RSPO independent smallholder standards by signing a smallholder statement in October 2022 which includes a commitment to not use forced labor, pay wages according to the minimum wage, no discrimination, no use of paraquat, participate in training, nil burning, minimizing pesticides, etc.

To ensure members understand and implement the agreements that have been made, an ICS team was formed as stated in a joint declaration appointing a group manager on September 7 2022 which explains the composition of the association's management. Apart from that, regular training and outreach has also been carried out for all members.

Based on interviews with group managers, it is known that managers understand RSPO certification and certification requirements. Group managers also easily manage members during audit activities and provide the information required for certification.

**A.2.3****E**

The Group Manager can demonstrate the gradual approach that has been taken for members to take part in each training carried out, this can be seen from the process of the Cooperative's journey to take part in certification which has been running for about 2 years, the attendance list for training and the same type of training is repeated to ensure all members have received the same training.

Meanwhile, Group managers can show documentation of training realization from 2022 to 2023. The document shows that all members who are members of the Cooperative in 2022 and 2023 have attended several planned trainings including:

- Training related to Good Agriculture Practice
- Training on hazardous materials
- Training on occupational safety and health
- HCV and HCS training
- Periodic training covering the RSPO Independent Smallholder Standard.

All of the training is provided by competent companions voluntarily. As for the associates coming from KOLTIVA, the Cooperative also stated that it is possible if members need other training that cannot be accommodated by the Facilitators, they will look for trainers from outside who are felt to be more competent and have capacity.

Based on the above, it is also certain that the group manager has received agronomy training and certification standards (RISS) from the companion from 2022 so that the group manager has sufficient experience and knowledge.

**MS-A**

PSPN can show the realization and plans for 2023. The training is carried out for all farmer members that have been carried out during the 2023 period, including:

- Training on internal audits for PSPN internal units attended by 22 members on 15 – 18 March 2023.
- RSPO socialization material carried out on 15 – 18 March 2023 which was attended by 22 participants.
- Training on Socialization of RSPO, SOP, HCV and HCS, Hazardous Materials conducted on 26 January 2023 which was attended by 38 people.
- RSPO, SOP, HCV and HCS Socialization Training, Hazardous Materials which was held on 06 June 2023 which was attended by 38 people.
- RSPO, SOP, HCV and HCS Socialization Training, Hazardous Materials which was held on 31 May 2023 which was attended by 38 people.
- Training related to GAP and pruning which was carried out by each farmer and carried out directly in the plantation area on June 12, 2023.
- Training on discrimination, harassment and violence in the workplace which was conducted on January 13, 2023 for each farmer in the respective plantation area owned by the farmer.

Based on the results of field observations and Group Interview conducted with sample members, it was shown that all samples stated that they had received training and outreach related to HCV, BMP, OHS and others. All of the training is provided by competent mentors voluntarily. As for the associates from KOLTIVA, the Cooperative also stated that it is possible if members need other training that cannot be accommodated by the Facilitators, they will look for trainers from outside who are deemed more competent and have capacity.

**MS-B**

Perkumpulan Sejahtera Pelita Nusantara has provided training and outreach to farmers, namely training on good agricultural practice (GAP), training related to HCV, management of hazardous materials, for example those carried out in:

- RSPO P&C socialization on 15-18 March 2023 which was attended by 76 people.
- Socialization on OHS and child labor on March 2 2023, which was attended by 30 participants.
- Socialization of the Use of RSPO Credit Sales Funds (premiums) on 23 August 2023 which was attended by 56 participants.
- Socialization of SOP and HCV on 31 May 2023 which was attended by 36 participants.

Based on the results of document verification and interviews with ICS management, it is known that PSPN already has a plan to conduct outreach and training to all members and also conveyed by the ICS management, that gradually the ICS team will carry out socialization and training to all members according to the time of each member. Apart from that, all sample farmers were able to explain ISH standards, requirements for membership, BMP, HCV, environmental protection, social welfare of workers, etc.

Based on this, PSPN has the opportunity to carry out planned socialization and training documentation activities so that it can prove that all members of the association have received the same socialization and training. (OFI)

	<b>Status: Comply</b>	
--	-----------------------	--

**B – ICS: Policies and Management**

**B.1**

**The group Internal Control System contains documented policies and procedures for operational management.**

**B.1.1**

**E**

The management unit has ICS for operational management which is regulated in the organizational structure and registered with the legal entity with number: AHU-00099435.AH.01.07 of 2020 dated 26 October. Regarding procedures for expelling members and sanctions for members who do not comply with ICS, which are contained in the SOP document for giving warnings and Member Sanctions No: 04/SOP-U-PELPED/X/2022 which explains:

- If there is a minor violation related to administrative order, the chairman of Perkumpulan Sejahtera Pelita Nusantara will be given a warning and given 30 days to correct it and given a warning letter 1.
- If a moderate violation occurs, such as after being given the first warning letter but is not heeded, a second warning letter will be given again with a correction period of 30 days.
- If a serious violation occurs which risks defamation, embezzlement, manipulation and does not heed the second warning letter, the chairman of the Pelita Nusantara Sejahtera Association has the right to expel the member from membership.
- If a serious violation involves very large losses or creates a risky conflict, the chairman of the Perkumpulan Sejahtera Pelita Nusantara (PSPN) has the right to take legal action.

Regarding procedures for carrying out internal audits, it is regulated in the SOP for carrying out internal audits with number: 02/SOP-U-AUDIT\_INT/X/2022 which is in effect from 03 October 2022 which aims to serve as a reference for carrying out internal audits.

The internal audit procedures regulate:

- Composition of the Audit Program to the audit report and follow-up actions.
- The internal audit period must be adjusted within 1 year for all members who are members and ensure that they have passed the internal audit.
- The internal audit team comes from unit members and are appointed representatives of farmer groups who have expertise and capabilities.
- Auditors may not audit their own farmer group sections.
- Writing and Reporting Audit Results including findings and presentations through meetings.
- Audit follow-up, including improvements within 1 period after submission.

**MS-A & MS-B**

Internal audit procedures are regulated in the SOP for carrying out internal audits number: 02/SOP-U-AUDIT\_INT/X/2022. The internal audit procedures regulate:

- Composition of the Audit Program to the audit report and follow-up actions.
- The internal audit period must be adjusted within 1 year for all members who are members and ensure that they have passed the internal audit.
- The internal audit team comes from unit members and are appointed representatives of farmer groups who have expertise and capabilities.
- Auditors may not audit their own farmer group sections.
- Writing and Reporting Audit Results including findings and presentations through meetings.
- Audit follow-up, including improvements within 1 period after submission.

Based on document review and interviews with sample farmers, it is known that the last Internal Audit was carried out on March 15 – June 15 2023 by the ICS Team totaling 10 people who were competent and had received internal training according to the 2023 plan and program. The overall audit findings were 20 findings, related to hazardous and toxic waste, statutory regulations, Occupational Safety and Health and GAP. The time for completion of the audit findings was carried out in the period 1-15 June 2023 in accordance with procedural provisions and did not exceed the applicable time limit and was confirmed by the ICS team that the findings had been identified and corrected by the farmers.

**B.1.2**

**E**

PSPN (smallholder) already has basic information about smallholders, for example as shown in the following information:

**Tardi (Cut Meutia Farmers Group)**

- Farmer ID: F1108000154975
- Geolocation: 4° 54' 20.749" N and 97° 25' 53.428" E
- Area: 2 Ha
- FFB production: 8.76 tonnes/year (January-July 2023)
- SHM: 1624
- STDB: Still in the processing process
- SPPL: 2903230096904

**Firmanto (Cut Nyak Dien Farmers Group)**

- Farmer ID: F1108000154165
- Geolocation: 4° 54' 50.196" N and 97° 25' 34.815" E
- Area: 0.875 Ha
- FFB production: 13.14 tons/year (Period Jan-July 2023)
- SHM: 2874
- STDB: Still in the processing process
- SPPL: 2907230258831

Based on the results of the document review, it is known that all members (270 farmers) have signed the membership requirements listed in the farmer statement, for example signed by a farmer with Tardi from the Cut Meutia Farmers Group on October 7 2022 and Firmanto from the Cut Nyak Dien Farmers Group on the October 5 2022 which contains, among other things:

- Understand the importance of sustainable production.
- Smallholders will join smallholder groups to undertake self-help group certification against the RSPO Independent Smallholder Standard and comply with relevant principles, criteria and indicators.
- Farmers will provide information - information to group managers such as information on land ownership, location coordinates, land ownership status, any disputes regarding existing land and so on.
- Smallholder commitment to comply with the requirements of the RSPO principles and criteria such as not doing forced labor, paying wages according to the minimum wage, not discriminating, not using paraquat, attending training, etc.

**MS-A**

Same as E.

**MS-B**

Same as E.

Status: Comply

**C – ICS: Group business planning**

**C.1**

**The group has a group Business Plan prepared with the participation and contributions of group members.**

**C.1.1**

**E**

PSPN has an annual group business plan contained in the 2023 *Perkumpulan Sejahtera Perkebunan Nusantara* (PSPN) Program Plan document. The work program contains work plans, program timelines and status of work program implementation, for example:

- Preparation and implementation of PSPN RISS certification
- RSPO outreach program for smallholders
- Program for gathering legality and land mapping of farmers.

PSPN also shows production and revenue estimates shown in the 2023 – 2025 Production Budget document, for example the production budget for 2023 is 6,623.93 tonnes. Then, PSPN does not yet have an expansion plan for the 270 registered members in the past one year. However, PSPN has plans for registration of new smallholders in the long-term plan of the RSPO.

**MS-A**

The ICS management showed the realization of the business plans for 2022 – 2023 which had been previously planned, for example:

- Preparation and implementation of RISS PSPN certification in September 2022 – August 2023.

- RSPO outreach program for farmers in April – October 2023.
- Program for collecting legalities and mapping farmers' land in April – December 2023.

The head of the ICS board meets every month to discuss the realization and evaluate the program plans that have been implemented and if there are activities that have not been implemented, the program will be allocated for a maximum of one semester to come. And at the meeting, the management will invite all members to attend.

**MS-B**

PSPN has documents related to financial planning in the PSPN Work Plan for 2024 - 2026. In this plan, PSPN has an estimated operational budget for the following year, such as providing facilities and equipment, training costs, certification activities and the needs of members' general meetings.

The current certification activity for PSPN is the MS-B where this audit is being conducted for the first time. PSPN was formed in 2020 and this proves that PSPN has been established independently without any income from credit sales (book and claim). The head of the ICS board stated that the operational costs they had received so far were assistance from Koltiva's mentoring. Then, the source also stated that the planned operational costs for the following year would come from the proceeds from credit sales to support financial existence.

From the description above, it can be concluded that PSPN can survive very well financially.

	<b>Status: Comply</b>
--	-----------------------

**C.2**

**The ICS of the group is integrated with the Group's Management Plan.**

**C.2.1**

**E**

PSPN has a group management plan in the PSPN Work Plan for 2022 – 2023. The work program contains work plans in several sections, namely:

- Institutional; Board meeting and annual member meeting.
- Collection, verification of completeness, and distribution of smallholder registration forms and legality documents.
- Training and outreach as well as monitoring and evaluation.
- Public consultation.
- Facilities and equipment; office stationery equipment, PPE, farmer's land boundary markers, etc.
- Internal and external audits.
- Etc; Checking samples of plantation soil of PSPN members, making of worker's work agreement and proof of payment of wages for plantation workers, etc.

**MS-A**

PSPN is also able to show evidence of implementation regarding the 2022 – 2023 work plan listed in the ICS Work Program Realization document as of August 29<sup>th</sup>, 2023. Over all it is known that there are 3 work programs that have not been completed and their implementation is still ongoing until the end of 2023. For example:

- Provision of boundary markers and plantation IDs for all members.
- Workers' work agreement, proof of wage payment and TBS transport fleet.
- External audit and fulfillment of external audit findings.

The chairman and management of ICS have also held a mid-year meeting on July 17<sup>th</sup>, 2023, which discussed reviewing work programs that have been carried out and preparations for work programs that have not been implemented in the following semester. For example, registering new farmers in the long-term plan of the RSPO, providing PPE for farmers to use when applying hazardous and toxic materials on their land, managing of hazardous and toxic waste, etc.

**MS-B**

Based on interviews and field visits to group members' land, it is known that farmers/members have a fairly good awareness of RSPO, best plantation practices, HCV management and social welfare. Members can also demonstrate their understanding of some aspects of the RSPO, for example applying OSH when working on their land.

Based on the results of the document review, it is known that all members (270 farmers) have signed the membership requirements listed in the farmer statement, for example signed by a farmer with Tardi from the Cut Meutia Farmers Group on October 7 2022 and Firmanto from the Cut Nyak Dien Farmers Group on the October 5 2022 which contains, among other things:

- Understand the importance of sustainable production
- Smallholders will join smallholder groups to undertake self-help group certification against the RSPO Independent Smallholder Standard and comply with relevant principles, criteria and indicators.
- Farmers will provide information - information to group managers such as information on land ownership, location coordinates, land ownership status, any disputes regarding existing land and so on.
- Smallholder commitment to comply with the requirements of the RSPO principles and criteria such as not doing forced labor, paying wages according to the minimum wage, not discriminating, not using paraquat, attending training, etc.

Based on the results of the Group Interview with 21 sample farmers, it was announced that all members had agreed and signed the membership requirements letter. Members also understand the requirements and commitments that must be met when joining PSPN.

	Status: Comply	
--	----------------	--

**D – ICS: Group Trading System for Certified Volumes**

**D.1  
The group has a procedure and system in place for the tracking of FFB.**

D.1.1  
E  
Currently, PSPN has not received an RSPO certificate so it does not have records of certified FFB production and sales. However, a “farmer’s notebook” can be displayed, which contains crop maintenance records and production records.

Based on field visits and interviews with sample farmers, it is known that the area owned by each member has clear boundaries in the form of red stakes or natural plants. Apart from that, farmers can also explain the mechanism for recording production for each harvest and separating certified fruit.

**MS-A**  
Currently, PSPN has not yet received an RSPO certificate, so it does not yet have a record of certified FFB production and sales.

**MS-B**  
Currently, PSPN has not yet received an RSPO certificate, so it does not yet have a record of certified FFB production and sales.

	Status: Comply	
--	----------------	--

**D.2  
The group documents and implements a system for the tracking of FFB.**

D.2.1  
E  
Not Applicable.

**MS-A**  
The audit carried out this time was the first audit for PSPN with the MS-B stage (without going through stages E and MS-A), so that in the previous year PSPN did not have certified production.

**MS-B**  
The audit carried out this time was the first audit for PSPN with the MS-B stage (without going through stages E and MS-A), so that in the previous year PSPN did not have certified production.

	Status: Comply	
--	----------------	--

**D.3  
The group has a procedure and system for premium distribution.**

D.3.1  
E  
PSPN (smallholder) has an SOP for the Use of RSPO Credit Sales Funds with No. 10/SOP-GM/IX/2022, among other things, informs the distribution of funds for certificate sales as follows:



- 30% of total receipts for deposit funds for external audit preparation.
- 20% of total revenue for additional business capital.
- 20% of total revenue for operational activities such as training, office stationery, additional members, etc.
- 30% of total revenue for distribution of incentives to members.

Based on interviews with sample farmers in the CMT, CND and SIM farmer groups, it is known that there are some farmers who have not been able to explain the use of the RSPO Credit Sales Fund (premium). PSPN (Smallholder) demonstrated the socialization of the SOP on the Use of Funds for Sales of RSPO Credit (premium) on 23 August 2023 which was attended by 56 farmers, but could not yet show documentation of the agreement on the use of funds for sale of RSPO credit (premium) and its socialization to all members of the association.

Based on this, PSPN (smallholder) has not been able to provide sufficient evidence that the use of the premium has been agreed upon and conveyed to all members of the association, so that this becomes a non- conformity No. 2023.02 with the major category.

**MS-A**

Currently, PSPN has not received an RSPO certificate, so it does not have records of certified FFB production and sales and records of premium payments.

**MS-B**

Currently, PSPN has not received an RSPO certificate, so it does not have records of certified FFB production and sales and records of premium payments.

D.3.1 E	<b>Status:</b> Non-conformity No.2023.03 with the Major category	
---------	---------------------------------------------------------------------	--

3.2.2 The Principal Criteria and Indicators that are applicable to both smallholders (as individual group members) and group managers.

Ref Std.	VERIFICATION RESULT of MUTU-Certification	
<b>PRINCIPLE 1: OPTIMISE PRODUCTIVITY, EFFICIENCY, POSITIVE IMPACTS AND RESILIENCE</b>		
<b>1.1 Smallholders establish a legal entity which has organizational capacity to comply with the RSPO Independent Smallholder Standard.</b>		
<p><b>E</b>  PSPN (Smallholder) has legal documents, including the following:</p> <ul style="list-style-type: none"> <li>• Deed of Establishment of the Association with No. 07 October 5 2020 by Notary &amp; PPAT Erika Herawati., SH., M.Kn</li> <li>• Decree of the Minister of Law and Human Rights of the Republic of Indonesia No. AHU-0009435.AH.01.07 Year 2020 October 26, 2020 concerning ratification of the establishment of the Perkumpulan Sejahtera Pelita Nusantara (PSPN) legal entity.</li> <li>• NPWP PSPN with no. 96,734,830.1-102,000</li> <li>• PSPN Memorandum of Association / Article of Association issued on 5 October 2020.</li> </ul> <p>In addition, the highest decision maker in the association is the meeting of members as stated in the Memorandum of Association / Article of Association. In addition, a PSPN supervisory body was also formed to ensure that institutional implementation is managed in a fair and transparent manner. Based on the results of interviews with representatives of a sample of farmers, it is known that the management of the cooperative has been carried out transparently, for example by holding regular monthly meetings and holding year-end meetings and all members have signed the farmer statement form.</p> <p>Based on the results of the document review, it is known that all members (270 farmers) have signed the membership requirements listed in the farmer statement, for example signed by a farmer with Tardi from the Cut Meutia Farmers Group on October 7 2022 and Firmanto from the Cut Nyak Dien Farmers Group on the October 5 2022 which contains, among other things:</p> <ul style="list-style-type: none"> <li>• Understand the importance of sustainable production</li> <li>• Farmers will join farmer groups to undertake self-help group certification to the RSPO Independent Farmer Standards and comply with relevant principles, criteria and indicators.</li> <li>• Farmers will provide information to group managers such as land ownership information, location coordinates, land ownership status, any disputes regarding existing land and so on.</li> <li>• Commitment of small farmers to comply with the requirements of RSPO principles and criteria such as not carrying out forced labor, paying wages according to the minimum wage, not discriminating, not using paraquat, attending training, etc.</li> </ul> <p>Based on the results of the Group Interview with 21 sample farmers, it was stated that all members had agreed and signed the membership requirements letter. Members also understand the requirements and commitments that must be met when joining PSPN.</p> <p><b>MS-A</b>  PSPN (Smallholder) presented a joint declaration on the appointment of a group manager on September 7 2022 which explains that the composition of the association's management is as follows:</p> <ul style="list-style-type: none"> <li>• Chairman is Sudikan</li> <li>• Secretary is Andi Suryandi</li> <li>• Treasurer is Ageng Prasetia Aji</li> </ul> <p>Based on interviews with farmers, it was reported that the members had agreed to appoint PSPN administrators.</p> <p>Apart from that, PSPN (Smallholder) also shows the composition of the ICS management as follows:</p> <ul style="list-style-type: none"> <li>• Chairman is Sudikan</li> <li>• Secretary is Andi Suryandi</li> <li>• Treasurer is Ageng Prasetia Aji</li> <li>• Registration unit, suggestions and complaints</li> <li>• FFB marketing monitoring unit</li> </ul>		

- Fire emergency unit
- Supervisory Board
- Internal audit unit
- Integrated pest control unit
- Environment Unit
- OHS, fertilizer and chemical monitoring unit
- 5 heads of farmer groups.

Based on the results of interviews with association administrators, it is known that they have received regular routine training such as training on implementing internal audits, training on financial management mechanisms and best management practices provided by the companion (Koltiva). Furthermore, the ICS team will manage and plan training for all members.

**MS-B**

Management of the association is carried out by the association's management, while ensuring compliance of all members with the agreements and provisions set is the task of the unit team. Both association administrators and unit teams collaborate to ensure that the governance of the implementation of activities runs well. Apart from that, there is also a supervisory body that provides input and suggestions to cooperative management.

From interviews with representatives of management, unit teams and supervisory bodies, it is known that the highest decision is at the member meeting. In member meetings, matters related to cooperative management will be discussed and presented transparently, especially regarding work plans and financial management.

PSPN (smallholder) also shows the financial budget for PSPN operational activities listed in the PSPN work plan budget for the 2023-2024 period. The articles of association and bylaws also stipulate that for capital for association activities, fees are determined for each member and the money collected will be allocated for PSPN activities such as outreach to members, office stationery, etc.

Status: Comply

**1.2**

**Smallholders have the capacity to effectively manage their farm.**

**E**

Not applicable.

**MS-A**

Based on the results of field visits, interviews and document verification, farmers manage their own land, and to ensure uniform and good land management accompanied by Koltiva. Activities carried out include:

- Fertilizing training which is carried out in a parallel form where it is considered very effective in application and can be a marker for the association member's. Apart from that, it can also maximize the harvesting process so that no FFB is missed.
- As well as all other agronomic activities in accordance with association guidelines
- Identify nutrient deficiencies and recommendations for fertilization.
- Training on identifying pest and disease attacks and recommendations for dealing with them.
- Integrated weed control training.
- Financial management training related to good plantation management.
- Training related to pruning will be held on May 16 2023.
- Training regarding the suitability of harvested fruit.
- Etc.

Based on the results of interviews with association administrators and members, it is known that the FFB produced from each land is recorded at each harvest, then the results of the recording are recapitulated at each monthly meeting held by the village assistant. After obtaining monthly data, the village assistant then provides the results of the recapitulation to the core management to be recorded in the association's production data document.

All documents resulting from the recording are well documented in the form of hard files and soft files. Based on the results of verification of production data, it can be seen that there has been a significant increase when comparing the 2019 data before proper maintenance was carried out, with the 2021 data which has followed the Cooperative's maintenance standards. The unit of certification

can also show evidence that it has carried out training in 2023, including:

- Training on Socialization of RSPO, SOP, HCV and HCS, Hazardous Materials conducted on 26 January 2023 which was attended by 38 people.
- HCV and HCS socialization carried out on RSPO socialization material carried out on 15 – 18 March 2023 which was attended by 22 participants.
- RSPO, SOP, HCV and HCS, Hazardous Toxic Materials Dissemination Training conducted on 06 June 2023 which was attended by 38 people.
- RSPO, SOP, HCV and HCS, Hazardous Toxic Materials Dissemination Training conducted on 31 May 2023 which was attended by 38 people.
- Training related to GAP and pruning carried out to each farmer and carried out directly in the plantation area on 12 June 2023.

Based on document verification, it is known that activities were planned and implemented comprehensively for all members, proven by the presence of activities carried out in each village. Apart from that, all sample farmers were able to explain ISH standards, requirements for membership, BMP, HCV, environmental protection, social welfare of workers, etc.

**MS-B**

The results of the Forum Group Discussion with 21 sample members showed that cooperative members had received training related to agricultural management and could explain it in depth. The results of field observations also showed that all sample plots visited had carried out the best plantation management practices as provided in the socialization, for example by using frond arrangement techniques, plant care, pest control, not applying chemical pesticides/insecticides and applying fertilizer in accordance with guidelines. Members can also show FFB production recording data which is recorded for each harvest activity and recapitulated every month. This data can be accounted for because all sales receipts are also attached to the data recording document. The data that has been recorded is then submitted to the Chair of the Farmers Group and then recapitulated by ICS every month.

Status: Comply

**1.3**

**Smallholders implement good agricultural practices (GAP) on their farms.**

**E**

Based on the results of document verification, interviews with ICS administrators and sample farmers, it is known that all members have signed and understand the membership requirements. Before joining PSPN, all members must complete the requirements as prospective members, including filling out the member registration form and providing copies of the Identity Card, Family Card, and Land Ownership Certificate. Apart from that, members also need to sign several documents, namely the Planter's Statement Letter, Willingness Letter to Take RSPO Certification and Group Member Registration Certificate. For example, a farmer with Mardian (Member ID Number F1108000166816) from the SIM farmer group signed the commitment on October 6<sup>th</sup>, 2022.

Based on interviews with sample farmers and field observations on their land, for example a farmer with Sunardi B from the CMT farmer group, it is known that farmers have understood the requirements for membership and the consequences of RSPO certification, one of which is the application of GAP in the management of sustainable oil palm plantations.

**MS-A**

PSPN has provided training to all group members regarding Good Agricultural Practices (GAP) which is outlined in the Training Minutes document as follows:

- Training on SOPs, Decree and policies related to harvesting, IPM control, weed control, pruning, fertilization as well as taking soil samples and leaf samples which are routinely carried out every month, for example on November 10<sup>th</sup> and December 21<sup>st</sup>, in 2022 as well as May 31<sup>st</sup> and June 6<sup>th</sup>, in 2023.
- GAP Harvest Training which will be held on March 15<sup>th</sup> – 18<sup>th</sup>, 2023.

PSPN supervised by Koltiva regularly carry out training to farmers regarding GAP by providing knowledge and applying it directly on farmers' land, for example:

- Harvest GAP training will be held on June 6<sup>th</sup>, 2023. The training discussed the maintenance of harvesting work tools so that the harvest remains optimal.
- GAP training on IPM control which will be held on September 22<sup>nd</sup>, 2022. The training discusses controlling the horn beetle pest (*Oryctes rhinoceros*).
- GAP weed control training which will be held on December 11<sup>th</sup>, 2022. The training discusses mechanical weed control.

- Fertilization GAP training which will be held on June 12<sup>th</sup>, 2023. The training discusses magnesium (*Mg*) deficiency so that the soil becomes acidic.
- GAP pruning training which will be held on September 14<sup>th</sup>, 2022. The training discusses routine pruning to optimize production.

Based on the results of interviews with sample farmers from 3 farmer groups (CMT, CND and SIM), information was obtained that all respondents were able to demonstrate all their knowledge regarding the results of the training and that it had been applied in their respective fields. The results of the field visit also showed that the sample farmers had implemented good GAP practices in a sustainable manner.

**MS-B**

PSPN has Member Monitoring and Assessment SOP Number 11/SOP-GM/IX/2022 Revision 1 which was stipulated on August 29<sup>th</sup>, 2023, by the Chairman of the ICS Management. The procedure regulates monitoring of members which is carried out at least once a month with the aim of monitoring the recording of FFB harvest and sales, fertilization, pruning, use of chemicals and monitoring of hazardous and toxic materials packaging at members/farmers' homes. Monitoring activities are carried out by ICS administrators by visiting all farmers' houses periodically.

ICS management representatives stated that all members/farmers were given the 2023 Farmer's Hand Book which contained information about the GAP guidelines and notes related to work carried out such as harvesting, fertilizing, pruning and using pesticides. During monitoring activities, the ICS administrator will record the information obtained from the Farmer's Pocket Book Calendar into the PSPN Farmer Activity Recording Form document which will later be used as a management database at the ICS level.

The results of a study of the PSPN Farmer Activity Recording Form document for 21 sample farmers from 3 farmer groups (CMT, CND and SIM) revealed that the ICS management only recorded members/farmers' harvests on the form. Regarding recording of other work such as fertilization and pesticide use, each farmer has recorded it in the 2023 Farmer's Pocket Book Calendar, for example:

- The farmer with Suharsono from the CND farmer group carried out work using the trademark pesticide *Bablas 490 SL* (active ingredient isopropyl amine glyphosate) at a dose of 100 ml/tank and fertilization work using *NPK Phonska, Urea* and *Dolomite* fertilizer at a dose of 1 kg/Ha.
- The farmers with Tardi from the CMT farmer group carry out work using the trademark pesticide *Ridox 480L* (active ingredient isopropyl amine glyphosate) at a dose of 100 ml/tank and fertilization work using *NPK Phonska* and *Urea* fertilizer at a dose of 1 kg/Ha.

Based on the results of interviews and field visits to sample farmers, for example farmers with Firmanto from the CND farmer group, it is known that farmers have implemented GAP which refers to the sustainable palm oil P&C listed in RISS in cultivating oil palm on their land. For example, fertilizing according to the recommendations given, not spraying on river borders, clearing land without burning, frond stacking techniques to maintain soil moisture and so on. The sample farmers were also able to explain well each stage of GAP management in oil palm plantations. This has been well understood by all members because they have received regular training and outreach sessions throughout 2023.

From the description above, it can be concluded that PSPN and ICS administrators have the opportunity to optimize member monitoring activities and ensure recording of GAP implementation by members/farmers in the PSPN Farmer Activity Recording Form. OFI.

Status: Comply

**PRINCIPLE 2: ENSURE LEGALITY, RESPECT FOR LAND RIGHTS AND COMMUNITY WELLBEING**

**2.1**

**Smallholders have legal or customary rights to use the land in accordance with national and local laws and customary practices.**

**E**

PSPN (smallholder) has geolocation data for each member, including checking the legal status of each member's land. The verification results are recorded in the PSPN member database which has the following information:

**Tardi (Cut Meutia Farmers Group)**

- Farmer ID: F1108000154975

- Geolocation: 4° 54' 20.749" N and 97° 25' 53.428" E
- Area: 2 Ha
- FFB production: 8.76 tonnes/year (January-July 2023)
- SHM: 1624
- STDB: Still in the processing process
- SPPL: 2903230096904

**Firmanto (Cut Nyak Dien Farmers Group)**

- Farmer ID: F1108000154165
- Geolocation: 4° 54' 50.196" N and 97° 25' 34.815" E
- Area: 0.875 Ha
- FFB production: 13.14 tons/year (Period Jan-July 2023)
- SHM: 2874
- STDB: Still in the processing process
- SPPL: 2907230258831

**MS-A**

Based on the results of a review of documents and interviews with representatives of association management and the Secretary of Seureuke Village, it is known that there are still 3 PSPN members who own land in the form of SKT and SPPL and STDB which are still being managed, with the following details:

**SHM**

Based on the results of the document review, it is known that out of 270 PSPN members, there are 3 members whose land ownership status is still in the form of SKT. Based on this, PSPN has the opportunity to develop plans and continue to show positive progress to improve the legal status of land so that in the end all members have land legality in the form of SHM.

**STDB**

PSPN (Smallholder) showing STDB statement in the manufacturing process with No. 525/1278 dated 25 August 2023 issued by the Aceh Utara District Plantation, Livestock and Animal Health Service which explained that STDB was in the process of managing 270 people, 402 as land parcels and a land area of 568.65 Ha and the STDB team from the Aceh Utara District Service also visited the farmer's fields. Based on this, PSPN has the opportunity to plan and continue to show positive progress in following up on STDB management.

**SPPL**

Based on the results of the document review, it is known that out of 270 PSPN members, there are 136 members who do not yet have an SPPL. Based on this, PSPN has the opportunity to plan and continue to show positive progress in following up on SPPL arrangements.

**(OFI)**

PSPN also has geolocation data for each member, including checking the legal status of each member's land. The results of the verification are set forth in the PSPN member database which has the following information:

**Tardi (Cut Meutia Farmers Group)**

- Farmer ID: F1108000154975
- Geolocation: 4° 54' 20.749" N and 97° 25' 53.428" E
- Area: 2 Ha
- FFB production: 8.76 tonnes/year (January-July 2023)
- SHM: 1624
- STDB: Still in the processing process
- SPPL: 2903230096904

**Firmanto (Cut Nyak Dien Farmers Group)**

- Farmer ID: F1108000154165
- Geolocation: 4° 54' 50.196" N and 97° 25' 34.815" E



- Area: 0.875 Ha
- FFB production: 13.14 tons/year (Period Jan-July 2023)
- SHM: 2874
- STDB: Still in the processing process
- SPPL: 2907230258831

**MS-B**

The Smallholder shows border and stake maintenance SOP No. 06.SOP which explains that each area owned by members is marked with boundaries in the form of bamboo stakes painted red, natural plants, etc and monitored periodically.

Based on field visits to sample farmers from the CMT, CND and SIM farmer groups, it is known that members delimit their land according to the field map in SHM using red stakes and natural boundaries in the form of plants. Farmers also periodically monitor the stakes that have been created.

Apart from that, based on interviews with the Aceh Utara District Land Agency, Seureuke Village Secretary and sample farmer representatives, it was stated that the farmers had carried out plantation activities in accordance with their land rights and there was no overlapping of land between communities, companies and also the status of the area.

PSPN also shows the PIPPIB overlay for the 1st semester of 2023 and also the RTRW map of Aceh Utara District which is listed in the Administrative Map of Area Functions in PSPN with a scale of 1: 50,000. It is known that the PSPN area is an area for other uses and with mineral soil types.

Status: Comply

**2.2**

**Smallholders have not acquired lands from indigenous peoples, local communities or other users without their free, prior and informed consent (FPIC), based on a simplified FPIC approach.**

**E**

Based on the results of document review and interviews with representatives of sample farmers, it is known that land ownership has been hereditary since 1994. Similar information was also conveyed by the Seureuke Village Secretary who stated that the majority of PSPN members were immigrants from the transmigrant program.

Although currently land acquisition is something that is passed down from generation to generation and bought and sold, the association also provides training related to FPIC to all its members. However, farmers have not signed and are not aware of the land tenure history form (Land Dispute), and at the time the audit took place they were also unable to show evidence that there was a land tenure history form (Land Dispute) signed by the farmer, the ICS team and the third party. This has become a non-compliance with indicator A.1.4.

PSPN already has geolocation data for each member, including checking the legal status of each member's land. The results of the verification are set forth in the PSPN member database which has the following information:

**Tardi (Cut Meutia Farmers Group)**

- Farmer ID: F1108000154975
- Geolocation: 4° 54' 20.749" N and 97° 25' 53.428" E
- Area: 2 Ha
- FFB production: 8.76 tonnes/year (January-July 2023)
- SHM: 1624
- STDB: Still in the processing process
- SPPL: 2903230096904

**Firmanto (Cut Nyak Dien Farmers Group)**

- Farmer ID: F1108000154165
- Geolocation: 4° 54' 50.196" N and 97° 25' 34.815" E
- Area: 0.875 Ha
- FFB production: 13.14 tons/year (Period Jan-July 2023)
- SHM: 2874

<ul style="list-style-type: none"> <li>• STDB: Still in the processing process</li> <li>• SPPL: 2907230258831</li> </ul>		
<p>MS-A &amp; MS -B Same as E.</p>		
	Status: Comply	
<p><b>2.3</b> The right to use the land is not disputed by indigenous peoples, local communities or other users.</p>		
<p>E Based on the results of a review of documents and interviews with representatives of sample farmers, it is known that land ownership has been hereditary since 1994. Similar information was also conveyed by the Seureuke Village Secretary who stated that the majority of PSPN members were migrants who were part of the transmigrant program.</p> <p>Although for now the acquisition of land is a matter passed down from generation to generation and buying and selling, the association also provides training related to FPIC to all of its members. However, the farmers had not signed and were not aware of the land tenure history form (Land Dispute), and at the time of the audit they were also unable to show evidence that there was a land tenure history form (Land Dispute) signed by the farmers, the ICS team and third parties. This has become a non-compliance with indicator A.1.4.</p>		
<p>MS-A PSPN (smallholder) shows the SOP for handling disputes and complaints for external parties which explains that if there are disputes or complaints from external parties, the ICS team and members will mediate disputes and complaints submitted by external parties.</p> <p>Based on interviews with Aceh Utara District Land Agency, Seureuke Village Secretary and the ICS team, it was stated that there were no disputes with other parties such as other communities and companies.</p>		
<p>MS-B Same as MS-A.</p>		
	Status: Comply	
<p><b>2.4</b> Smallholder plots are located outside of areas classified as national parks or protected areas, as defined by national, regional or local law or as specified in National Interpretations.</p>		
<p>E Based on the results of interviews and document review with representatives of the Aceh Utara District Plantation Service and the Head of Seureuke Village, it is known that the location of the Perkumpulan Sejahtera Pelita Nusantara farmers is in an area designated as a plantation area. Apart from that, legally, the members also have certificates of ownership rights and some are in the form of certificates of land. The overlay results between the map of the distribution of members of the Perkumpulan Sejahtera Pelita Nusantara (PSPN) and PIPPIB also show that all members are in Other use area.</p>		
<p>MS-A Based on the results of interviews and document studies with representatives of the Aceh Utara District Plantation Office and the Head of Seureuke Village, it is known that the location of Perkumpulan Sejahtera Pelita Nusantara farmers is in an area designated for plantation areas. Apart from that, legally, the members also have ownership certificates and some are in the form of land certificates. The results of the overlay between the Perkumpulan Sejahtera Pelita Nusantara (PSPN) and PIPPIB member distribution maps also show that all members are in Other use area.</p>		
<p>MS-B Same as MS A.</p>		
	Status: Comply	
<p><b>2.5</b> For new plantings, smallholders do not clear or acquire any land without obtaining the free, prior and informed consent (FPIC), of indigenous people and/ or local communities and/ or other users, based on a simplified FPIC approach.</p>		

**Do any smallholders within the group have plans for new plantings of oil palm? If none, SKIP**

E, MS-A, MS-B

Until now there are no new planting plans from PSPN.

Status: Comply

**PRINCIPLE #3 RESPECT HUMAN RIGHTS, INCLUDING WORKERS' RIGHTS AND CONDITIONS**

**3.1**

**There is no use of forced labour.**

E

All members have signed a statement of commitment regarding the prohibition of forced labor. For example, a farmer with Hadi Sucipto (Member ID Number F1108000153155) from the CND farmer group signed a Farmer's Statement Letter on October 1<sup>st</sup>, 2022. At point D3 the document reads "I am committed to ensuring that there are no forced labor practices in plantation operations and to stop the practice of forced labor that occurs there still is."

Apart from that, PSPN also has Decree Number 14/SK-PSPN/X/2022 concerning Prohibition of Discrimination, Forced Labor and Human Trafficking which was ratified on October 21<sup>st</sup>, 2022, by the Chairman of the ICS Management. The document explains that PSPN members are prohibited from carrying out acts of forced labor against workers or other people under any circumstances.

MS-A

Farmers attend training on employment aspects, for example:

- Training on social aspects, child labour, OHS and PPE management which was held on March 2<sup>nd</sup>, 2023.
- SOP, Decree and Policy training related to the prohibition of employing minors, payment of wages to workers, OHS, member complaints, prohibition of discrimination, forced labor and trafficking in persons which are routinely carried out every month for example on November 10<sup>th</sup> and December 21<sup>st</sup>, in 2022 as well as May 31<sup>st</sup> and June 6<sup>th</sup>, in 2023.

The training discussed labor aspects referring to the RISS P&C and applicable labor laws in Indonesia, for example regarding the prohibition of forced labor, the prohibition of employing children under the age of 18, setting minimum wages, decent payments for workers, providing safe work facilities for workers, grievance mechanism and prohibition of discrimination, harassment and violence on plantations.

MS-B

Smallholder shows a list of workers used by land owners for harvesting and fertilizer activities which also provides wages, gender of workers, date of birth, etc. Based on the results of interviews and field visits to sample farmers from 3 farmer groups (CMT, CND and SIM), it is known that there are several farmers who use labor for harvesting activities. The worker is a family, relative or colleague of the farmer. The interviewee also stated that there were no document retention activities by farmers or ICS administrators and each worker could easily refuse to work/terminate their working relationship with the member concerned if necessary so that there was no coercion in working.

Apart from that, smallholders also showed several decision letters regarding:

- Decree prohibiting employment of minors.
- Decree on human rights.
- Decree regarding payment of wages.

In the decree, it explains labor practices such as payment of wages referring to the provincial/district minimum wage and the absence of forced labor and that workers are not from human trafficking and are not underage. Based on the results of interviews and field visits to sample farmers from 3 farmer groups (CMT, CND and SIM), it is known that personnel have been able to explain labor regulations.

Status: Comply

**3.2**

**Children are not employed or exploited. Work by children is acceptable on family farms, under adult supervision and when not interfering with education programs. Children are not exposed to hazardous working conditions.**

E

Farmers have understood that there should be no child labor practices in the plantations, this is evidenced by the results of interviews and field observations in 3 farmer groups (CMT, CND and SIM) where information was obtained that workers recruited by farmers to

assist harvesting activities were adults aged over 18 years and no children are employed on the farm. In addition, all members of PSPN have signed a commitment that there will be no child labor practices in plantation operations and stop child labor practices that are still ongoing. The management provides an example of signing a Planter's Declaration belonging to a farmer with Sri Amurni (Member ID Number F1108000167448) from the CMT farmer group on October 7<sup>th</sup>, 2022. The farmer's children who are still of school age are attending school according to their level.

**MS-A**

The results of interviews and field observations on the fields of sample farmers from 3 farmer groups (CMT, CND and SIM) revealed that there were no children under 18 years of age employed on the plantations. Some members/farmers have workers to help with harvesting work. Based on a review of employee data documents for the 2023 period, it is known that none of the 43 workers are under 18 years of age.

**MS-B**

Refer to requirements E and MS-A.

Status: Comply

**3.3**

**Workers' pays complies with minimum legal requirements, mandatory industry standards as defined by national law or collective bargaining, whichever takes priority in local regulations.**

**Are there workers on the farm? If no, SKIP**

**E**

PSPN shows a Farmer's Statement signed by all members, for example a farmer with the Ruadi (Member ID Number F1108000165488) from the SIM farmer group who signed the letter on October 8<sup>th</sup>, 2022. In point D4 the document explains the commitment of members regarding payment of wages to workers according to with regional minimum wages.

In addition, PSPN also has Decree Number 12/SK-PSPN/X/2022 concerning Payment of Wages which was ratified on October 19<sup>th</sup>, 2022 by the Chariman of the ICS Management. In the document it is explained that PSPN members pay wages to workers according to the established provincial or district minimum wage standards.

**MS-A**

The results of the document review found that the determination of wages for workers refers to the applicable minimum wage in Aceh Utara District. Based on the Decree of the Governor of Aceh Number 560/1539/2022 concerning Determination of the Aceh Province Minimum Wage for 2023 which was determined on November 24<sup>th</sup>, 2022. It is known that the Aceh provincial minimum wage for 2023 is IDR 3,413,666 and is effective from January 1<sup>st</sup>, 2023.

In determining wages, farmers are guided by wages based on agreed production units. ICS administrators show work agreement letters between workers and farmers/land owners, for example, work agreement letter number 227/PSPN/.../2023 between workers with the initials BS and farmers with Sunardi B (CMT farmer group). The work agreement is valid from January 1<sup>st</sup> to December 31<sup>st</sup>, 2023.

The work agreement letter includes requirements, rights and obligations for workers and farmers, for example regarding wages to workers as explained in Article 3 that:

- Workers will receive wages equal to the applicable minimum wage of IDR 3,413,666/month or:
  - IDR 136,546/day if harvest workers get yields below 445 kg of FFB
  - IDR 136,546/day if weed workers do work under 17 tanks
  - IDR 136,546/day if fertilizer workers do work under 5 sacks
  - IDR 136,546/day if Estate/pruning workers do work under 19 trees.
- Wages with a piece system are given according to the agreement between workers and farmers:
  - FFB harvest = IDR 250 kg/FFB
  - Weed control (mechanical/chemical) = IDR 8,000/tank
  - Fertilizer application = IDR 25,000/sack
  - Pruning = IDR 7,000/tree

As a result of interviews with sample farmers from 3 farmer groups (CMT, CND and SIM), information was obtained that farmers only

have workers for harvest work. Meanwhile, the spray and fertilizer work is carried out by the farmers themselves. In addition, the payment of wages to workers has been recorded by each farmer. The remuneration refers to the acquisition of production results listed in the weigh ticket. The wages paid to workers are wages per Kg of FFB, which ranges from IDR 250 – 350/kg FFB. The informants stated that in one harvest activity, the yields obtained by farmers generally ranged from at least 800 kg. So that the wages earned by workers are IDR 200,000 – 280,000/harvest activity. ICS management shows proof of payment of wages to workers which is listed in the payment receipt, for example a receipt for payment of wages from farmers with Sunardi B (CMT farmer group) to workers with the initials BS on July 12 2023 amounting to IDR 260,000.

From the explanation above, it can be concluded that the worker has received payment as expected and agreed, at least in accordance with the applicable minimum wage.

MS-B

Same as E and MS-A.

Status: Comply

**3.4**

**Workers understand their rights and freedom to file a complaint to group manager or relevant third parties, including RSPO.**

**Are there workers on the farm? If no, SKIP**

E

PSPN shows the Planters' Statement document which has been signed by all members. For example, a farmer with Edi Karyawanto (Member ID Number F1108000154983) from the CND farmer group signed the letter on October 5<sup>th</sup>, 2023. In point D5 it states that "I am committed to respecting workers' rights to submit complaints".

PSPN also shows:

- SOP for Member Complaints Number 05/SOP-U-PELPED/X/2022 which was ratified on October 3<sup>rd</sup>, 2022, by the Chairman of the ICS Management.
- Decree on Freedom of Opinion and Association Number 10/SK-PSPN/X/2022 which was ratified on October 17<sup>th</sup>, 2022, by the Chairman of the ICS Management.

These two procedures explain the complaint process from workers and members up to the stages of resolution.

MS-A

Farmers attend training on employment aspects, for example:

- Training on social aspects, child labour, OHS and PPE management which was held on March 2<sup>nd</sup>, 2023.
- SOP, Decree and Policy training related to the prohibition of employing minors, payment of wages to workers, OHS, member complaints, prohibition of discrimination, forced labor and trafficking in persons which are routinely carried out every month for example on November 10<sup>th</sup> and December 21<sup>st</sup>, in 2022 as well as May 31<sup>st</sup> and June 6<sup>th</sup>, in 2023.

The training discussed labor aspects referring to the RISS P&C and applicable labor laws in Indonesia, for example regarding the prohibition of forced labor, the prohibition of employing children under the age of 18, setting minimum wages, decent payments for workers, providing safe work facilities for workers, grievance mechanism and prohibition of discrimination, harassment and violence on plantations.

The results of interviews with ICS management found that during the past one year there were no reports/complaints from workers or farmers.

MS-B

Based on the results of interviews and field visits to sample farmers from 3 farmer groups (CMT, CND and SIM), it is known that there are some members who use labor for harvesting activities. The informants also stated that they were routinely socialized by the ICS management regarding the flow of complaints during training activities. Then members/farmers also routinely provide information about submitting complaints to workers before starting work.

Some association members employ workers, but at the time of the audit, no members carried out land management activities using workers. So the auditor team only conducted interviews with members who managed their own land and members who employed

workers.

Based on these interviews, personnel can explain the worker complaint system and periodically convey it to workers. Apart from that, it is known that there are no complaints from workers in the complaint book.

Status: Comply

**3.5**

**Working conditions and facilities are safe and meet minimum legal requirements.**

E

Farmers have understood about safe working conditions and facilities both for themselves and for their workers, this is evidenced by the results of interviews and field observations in 3 farmer groups (CMT, CND and SIM) where information was obtained that farmers/workers understand the risks of work accidents so that they obey in using PPE when doing work on his land. In addition, all members of PSPN have signed a commitment to provide safe working conditions and facilities. The management provides an example of signing a Planter's Statement belonging to a farmer with Tardi (Member ID Number F1108000154975) from the CMT farmer group on October 7<sup>th</sup>, 2022.

PSPN also shows:

- SOP of OHS Number 03/SOP-U-B3K3/IX/2022 which was ratified on September 21<sup>st</sup>, 2022, by the Chairman of the ICS Management.
- SOP for Risk Control and Use of PPE Number 06/SOP-U-B3K3/IX/2022 which was ratified on September 21<sup>st</sup>, 2022, by the Chairman of the ICS Management.

The procedure above explains the commitment to protect workers' rights to safety in carrying out work, the use of PPE for each worker/farmer based on the type of work on the land as a preventive measure to minimize the consequences arising from work accidents.

**MS-A**

Farmers attend training on employment aspects, for example:

- Training on social aspects, child labor, OHS management and PPE which will be held on March 2 2023 for farmers and workers.
- Training on SOPs, Decrees and Policies related to the prohibition of employing minors, payment of workers' wages, OHS, member complaints, prohibition of discrimination, forced labor and human trafficking which is routinely carried out every month, for example on November 10 and December 21 2022 and 31 May and June 6 2023 for farmers and workers.

Based on the results of interviews with farmers, information was obtained that they had understood safe working conditions and facilities for workers and farmers themselves. For example, for spraying activities, farmers explain that the PPE they use includes safety helmets, boots, masks, aprons, gloves and uses long sleeves and trousers to avoid exposure to chemicals

**MS-B**

As a result of interviews with sample farmers from 3 farmer groups (CMT, CND and SIM), information was obtained that there were several members/farmers who used labor for harvest activities. The interviewee also added information that they had demonstrated and facilitated safe working conditions and facilities for workers such as the use of PPE in harvesting, spraying, fertilizing, etc. Apart from that, during the last year there were no work accidents in plantation operational activities.

Status: Comply

**3.6**

**There is no discrimination, harassment, or abuse on the farm.**

**Are there workers on the farm? If no, SKIP**

E

All members have signed a commitment statement regarding the prohibition of discrimination, harassment or violence on the farm. For example, a farmer with Sodikin (Member ID Number F1108000166121) on October 6<sup>th</sup>, 2023, signed a Farmer's Statement Letter on October 1<sup>st</sup>, 2022. In point D3 the document reads "I am committed to ensuring that there is no discrimination, harassment or violence on the farm."

Apart from that, PSPN also has Decree Number 14/SK-PSPN/X/2022 concerning Prohibition of Discrimination, Forced Labor and



Human Trafficking which was ratified on October 21<sup>st</sup>, 2022 by the Chair of the ICS Management. The document explains that PSPN members are prohibited from committing discrimination, harassment and violence against their workers.

**MS-A**

Farmers attend training on employment aspects, for example:

- Training on social aspects, child labour, OHS and PPE management which was held on March 2<sup>nd</sup>, 2023.
- SOP, Decree and Policy training related to the prohibition of employing minors, payment of wages to workers, OHS, member complaints, prohibition of discrimination, forced labor and trafficking in persons which are routinely carried out every month for example on November 10<sup>th</sup> and December 21<sup>st</sup>, in 2022 as well as May 31<sup>st</sup> and June 6<sup>th</sup>, in 2023.

The training discussed labor aspects referring to the RISS P&C and applicable labor laws in Indonesia, for example regarding the prohibition of forced labor, the prohibition of employing children under the age of 18, setting minimum wages, decent payments for workers, providing safe work facilities for workers, grievance mechanism and prohibition of discrimination, harassment and violence on plantations.

**MS-B**

Based on the results of interviews with all sample farmers from 3 farmer groups (CMT, CND and SIM), information was obtained that they had understood the applicable policies in PSPN and that members/farmers and workers were in a safe place and free from discrimination, harassment or violence. The ICS management also stated that during the past one year there were no reports of discrimination, harassment or violence in the plantations.

Some association members employ workers, but at the time of the audit, no members carried out land management activities using workers. So the auditor team only conducted interviews with members who managed their own land and members who employed workers.

Based on these interviews, personnel can explain policies prohibiting discrimination, harassment or violence and periodically convey them to workers. Apart from that, it is known that in the complaint book there were no complaints from workers regarding this matter.

Status: Comply

**PRINCIPLE #4 PROTECT, CONSERVE AND ENHANCE ECOSYSTEMS-AND THE ENVIRONMENT**

**4.1**

**High Conservation Values (HCVs) on the smallholder plot or within the managed area and High Carbon Stock (HCS) forests identified after November 2019 using the simplified combined HCV-HCS approach are managed to ensure that they are maintained and/or enhanced.**

**E**

Perkumpulan Sejahtera Pelita Nusantara has provided training and outreach to farmers, namely related to training on good agriculture practices, training related to HCV, management of hazardous materials, for example those carried out on:

- RSPO P&C socialization on 15-18 March 2023 which was attended by 76 people.
- Socialization on OHS and child labor on March 2 2023, which was attended by 30 participants.
- Socialization of the Use of RSPO Credit Sales Funds (premiums) on 23 August 2023 which was attended by 56 participants.
- Socialization of SOP and HCV on May 31 2023, which was attended by 36 participants.

All members have also signed a statement of commitment regarding the protection of HCV and HCS forests. For example, a farmer with Sodikin (Member Identification Number F1108000166121) on October 6 2023 signed a Farmer's Statement Letter on October 1 2022. At point D12 the document reads "I am committed to protecting HCV and SKT forests through a precautionary practice approach."

Based on the results of document verification and interviews with ICS management, it is known that PSPN already has a plan to conduct outreach and training to all members and also conveyed by the ICS management, that gradually the ICS team will carry out socialization and training to all members according to the time of each member.

Based on this, PSPN has the opportunity to carry out planned socialization and training documentation activities so that it can prove that all members of the cooperative have received the same socialization and training.

**MS-A**

Perkumpulan Sejahtera Pelita Nusantara can show evidence that all group members have attended training on the protection of flora and fauna as well as conservation areas, be it watercourses, peatlands or areas with high erosion potential as evidenced in the document evidence of the relevant minutes:

- Training on Socialization of RSPO, SOP, HCV and HCS, Hazardous Materials conducted on 26 January 2023 which was attended by 38 people.
- HCV and HCS socialization which was carried out on the RSPO socialization material which was carried out on 15 – 18 March 2023 which was attended by 22 participants.
- RSPO, SOP, HCV and HCS Socialization Training, Hazardous Materials which was held on 06 June 2023 which was attended by 38 people.
- RSPO, SOP, HCV and HCS Socialization Training, Hazardous Materials which was held on 31 May 2023 which was attended by 38 people.
- Training regarding GAP and pruning which was carried out to each farmer and carried out directly in the plantation area on June 12, 2023.

The training also explained the prohibition on the application of chemicals around river border areas and water bodies, as well as destroying forest areas. Training is provided by a team of supervisors from Koltiva who are trainers who are competent in their fields. The results of interviews with all 21 sampled farmers also proved that they had a good understanding and could demonstrate understanding of HCV and HCS forest, human-wildlife conflict and RTE.

They can also explain the benefits of the existence of animals and plants around them, for example one farmer explained about the benefits of snakes, eagles and owls which are predators of rats, insect-eating birds which are pest controllers and others.

**MS-B**

Based on the results of field observations in several member areas included in the sample, river border areas have been managed, for example by installing signboards prohibiting the application of chemicals, planting bamboo, and no traces of chemical applications were found in the river border areas. Cooperative members can also explain the prohibitions applied within membership, for example prohibitions on hunting, burning, protecting protected animals and plants, not maintaining protected animals and plants and others.

Status: Comply

**4.2**

Where the existing smallholder plot has been planted and cleared after November 2005 or is on an area identified as HCS forests after November 2019 up to the eligibility period, a remediation and compensation process appropriate for smallholders based on Land Use Change Analysis (LUCA) will be applicable (Reference preamble).

**E**

Perkumpulan Sejahtera Pelita Nusantara (PSPN) can show information on all plots of smallholders' land converted and planted with oil palm after 2005 as well as all plot coordinates/maps. A simplified combined HCV-HCS approach has also been used which can be proven in the statement of commitment contained in the Statement of Willingness to Take RSPO Certification which contains the following:

- No new planting or no expansion of existing farms in primary forests, HCV areas, HCS forests, in riparian areas, or on steep slopes (more than 25 degrees or as in National Interpretation)
- Protect HCVs and HCS forests through the precautionary practices approach
- No new planting on peat and replanting on peat only in areas with low risk of flooding and saline intrusion
- Use of best management practices for oil palm on peat
- No burning for preparing land or pest control
- Minimize and control erosion.

**MS-A**

Based on communication verification between the RSPO and the Cooperative, represented by the associate, Mr. Tomy Ardiansyah, it shows that the Cooperative has identified the remediation area and has submitted it to the RSPO. Other evidence is the LUCA Study results document for a scope of 270 farmers which was carried out in 2022 with the final document coming out on May 4 2023 with PASS status or acceptable.

The cooperative has been able to show proof of communication with the RSPO regarding Disclosure of Liability via email. On

<p>December 28 2022, the RSPO approved the Disclosure of Liability document with the scope written in the email, namely "270 Smallholders (402 individual Plots) with a total managed area of 568.65 Ha" and it was recommended to proceed to the LUCA study stage. On 04 May 2023, the cooperative sent the LUCA document to the RSPO and on 05 May 2023 the RSPO responded with the conclusion that the LUCA status for the Cooperative had passed with Conservation and Remediation obligations covering an area of 0 Ha.</p> <p>MS-B Because there is no remediation area within the scope of the unit of certification, this indicator does not apply.</p>	
	Status: Comply
<p><b>4.3</b> New plantings of independent smallholders, since November 2019:</p> <ul style="list-style-type: none"> <li>• Do not replace any HCVs</li> <li>• Do not replace any HCS forests as defined by the simplified combined HCV-HCS approach</li> <li>• Are not on steep slopes (more than 25 degrees or as in NI)</li> <li>• Are not on peat areas of any depth.</li> </ul> <p><b>Do any smallholders within the group have plans for new plantings of oil palm? If none, SKIP</b></p>	
<p>E, MS-A &amp; MS-B Until the audit activity is carried out and refers to the Cooperative's plan, for the next 5 years there will be no plans to plant new oil palm in the current certification area. Based on the 2023 work plan document and the Cooperative's 5-year business plan, it is known that until 2025 there are no plans for farmers to plant new oil palm. The results of interviews with group leaders and Cooperative members also stated the same thing, plans have not yet been made but will be considered again at monthly meetings considering that several members have land with a type of agricultural land cover but the location is outside the scope of certification. So that the possibility of new planting may be allocated in the future work plan schedule according to needs. Regarding replanting in conservation areas, all members have signed a declaration not to carry out new planting in HCV or HCS forests, on steep slopes or on peat. Apart from that, all existing Cooperative members do not have areas with these qualifications.</p>	
	Status: Comply
<p><b>4.4</b> Where smallholder plots exist on peat, subsidence and degradation of peat soils is minimized by use of best management practices.</p> <p><b>Do any smallholders within the group have existing plots on peat? If no, SKIP</b></p>	
<p>E, MS-A &amp; MS-B Based on the results of the overlay (integration) with the Member Distribution Map and the Indicative Map for the Termination of Granting of New Primary Natural Forest and Peat Land Permits (PIPPIB) for the period of Semester 1 of 2023 with a scale of 1:50,000, information was obtained that there were no members' lands within the peat area and based on The map of soil types in the Tanggaan District, Aceh Utara District, Aceh Province with a scale of 1:45,000 also states that there is no land belonging to Perkumpulan Sejahtera Pelita Nusantara (PSPN) which is in the peat area. The soil types identified are podzolic and alluvial.</p>	
	Status: Comply
<p><b>4.5</b> Plots on peat are replanted only on areas with low risk of flooding or saline intrusion as demonstrated by a risk assessment.</p> <p><b>Do any smallholders within the group have plans for replanting plots that are located on peat? If no, SKIP</b></p>	
<p>E, MS-A &amp; MS-B Based on the results of the overlay (integration) with the Member Distribution Map and the Indicative Map for the Termination of Granting of New Primary Natural Forest and Peat Land Permits (PIPPIB) for the period of Semester 1 of 2023 with a scale of 1:50,000, information was obtained that there were no members' lands within the peat area and based on The map of soil types in the Tanggaan District, Aceh Utara District, Aceh Province with a scale of 1:45,000 also states that there is no land belonging to Perkumpulan Sejahtera Pelita Nusantara (PSPN) which is in the peat area. The soil types identified are podzolic and alluvial.</p>	
	Status: Comply
<p><b>4.6</b> Fire is not used on the oil palm plot for preparing land or for pest control, nor open fire for waste management on the farm.</p>	

E

The Prosperous Pelita Nusantara Association (PSPN) has committed not to use fire for land preparation, pest control, or waste management. This can be proven based on the results of document verification, interviews with cooperative management and farmers during field visits, it is known that all members have signed and acknowledged the membership requirements. All members before joining the Cooperative must complete the requirements to sign several documents as follows:

- A letter stating the willingness of farmers to participate in RSPO certification as listed in attachment 2.
- Smallholder Declaration as referred to in Appendix 2
- Statement of commitment to RSPO Certification as listed in attachment 2.

The document explains the prohibition on the use of fire in oil palm plots to prepare land or for pest control, or open fires for waste management in agriculture, explained in the Statement of Commitment to RSPO Certification.

MS-A

As explained in the replanting program, there are no plans for replanting or area expansion in the near future, so new land preparation is not applicable. Meanwhile, based on the results of interviews with the Plantation Service and the Village Representative, it is known that until now there has never been a fire in the plantation area.

Field observation results also show that there is no physical evidence of the use of fire (which was carried out after the feasibility assessment) for oil palm land preparation by smallholders. Farmers have completed training on Alternatives to land preparation without burning, Alternatives to using fire for pest control and fire prevention and how to handle and manage fires in communities and villages. Some evidence of socialization regarding the prohibition of burning is listed in the minutes, namely:

- Socialization of RSPO, SOP, HCV and HCS, Hazardous Materials which was carried out on 26 January 2023 which was attended by 38 people.
- HCV and HCS socialization which was carried out on the RSPO socialization material which was carried out on 15 – 18 March 2023 which was attended by 22 participants.
- RSPO, SOP, HCV and HCS Socialization Training, Hazardous Materials which was held on 06 June 2023 which was attended by 38 people.
- RSPO, SOP, HCV and HCS Socialization Training, Hazardous Materials which was held on 31 May 2023 which was attended by 38 people.
- training regarding GAP and pruning which was carried out to each farmer and carried out directly in the plantation area on June 12, 2023.

Based on a review of the documents provided during the training, information was obtained that calls for and prohibitions on the use of fire for pest control and land clearing had been conveyed, as well as alternatives such as using the Integrated Pest Management system, carrying out land clearing by mechanical means and so on.

MS-B

Based on the results of field observations on land plots in 21 samples showed that there were no indications of land clearing using fire or pest control using fire. All land clearing activities are carried out mechanically. The results of interviews with the Head of Sereuke Village also stated that it is not permissible to carry out land clearing activities through burning.

Status: Comply

4.7

**Riparian buffer zones are identified and managed to ensure they are maintained and/or enhanced.**

E

PSPN has identified riparian buffer zones within the group with the result that there are areas that fall into the riparian zone in the member's land area and each member who is in the riparian zone area has received socialization and training regarding not planting in the hcv and conservation area, and there is no operational activities including chemist around the identified area. All group members represented from sample smallholders have also signed a declaration not to carry out new plantings in riparian areas which can be demonstrated in the commitment document to protect HCV and HCS forests through the precautionary practice approach of each member contained in the Statement Letter of RSPO Cooperative Certification Commitment that has been signed by each member.

MS-A

PSPN has completed training on the management of river basin buffer zones included in the HCV area training provided by a companion team from Koltiva with trainers who are competent in their fields with evidence of socialization regarding the prohibition of

chemical application and river riparian management listed in the relevant official report:

- RSPO, SOP, HCV and HCS Training and Socialization activities related to hazardous materials which were carried out on 26 January 2023 which was attended by 38 people.
- HCV and HCS socialization carried out on RSPO socialization material carried out on 15 – 18 March 2023 which was attended by 22 participants.
- RSPO, SOP, HCV and HCS, Hazardous Toxic Materials Dissemination Training conducted on 06 June 2023 which was attended by 38 people.
- RSPO, SOP, HCV and HCS, Hazardous Toxic Materials Dissemination Training conducted on 31 May 2023 which was attended by 38 people.
- Training related to GAP and pruning carried out to each farmer and carried out directly in the plantation area on 12 June 2023.

Some of the planned activities are marking area boundaries, prevention and control of land fire hazards, area protection and flora and fauna species. Types of derivative activities that will be carried out include making signboards prohibiting land clearing by burning, installing signboards prohibiting spraying in total, signboards prohibiting hunting. The results of the interviews also showed that the farmers had knowledge of the management of the riparian buffer zone including an action plan to maintain and/or enhance the riparian buffer zone such as by not applying chemicals such as fertilizers and pesticides, or not replanting in the riparian area.

**MS-B**

The results of field observations show that there are plots of land located in river border areas, but the cooperative still manages the border areas around members' land by installing signs prohibiting the use of chemicals, socializing HCV and Conservation, prohibiting throwing rubbish into the river, and not Traces of spray were found on the river border and traces of land burning. Based on interviews with sample farmers, it is known that personnel can explain policies, procedures and management of river border areas.

Status: Comply

**4.8**

**Pesticides are used in ways that do not endanger health of workers, family, communities or the environment.**

**E**

The ICS administrator shows the PSPN Policy document on the Use of Paraquat No. 03 of 2022 which was ratified on October 24<sup>th</sup>, 2022, and was signed by the Chairman of the ICS Management. The document states that PSPN is determined to maintain environmentally friendly palm oil plantations by limiting or reducing the use of pesticides, especially pesticides with the active ingredient paraquat.

**MS-A**

PSPN has included all members of farmer groups in GAP and OHS training on the use of pesticides, for example those held on December 20<sup>th</sup>, 2022, and September 8<sup>th</sup>, 2023. The training explained best management practices for pesticides including the use of pesticides, awareness of the risks for pregnant and lactating women and young workers, storage and disposal of pesticide waste, ban on the use of paraquat and pesticides listed by WHO Class 1A or 1B by the Stockholm or Rotterdam Conventions.

In addition, PSPN has established SOPs related to the management of used chemical containers as stated in SOP Number 02/SOP-U-B3K3/IX/2022 dated August 16<sup>th</sup>, 2022, which includes information that used chemical containers must be stored properly in a temporary storage warehouse, documented and protected from possible theft and contamination.

From the results of field observations, it was found that PSPN already has a storage warehouse located at the PSPN office and has carried out cooperation in continuing storage to temporary storage of hazardous toxic and waste which is licensed with the company (PT Seuramoe Agro Persada) on August 1<sup>st</sup>, 2023. Therefore, PSPN has the opportunity to improving the facilities and infrastructure at the hazardous toxic and waste temporary storage warehouse and monitoring and outreach to members regarding the implementation of hazardous toxic and waste management. OFI.

**MS-B**

The results of interviews with sample farmers from 3 farmer groups (CND, CMT and SIM), stated that members/farmers know the applicable policies regarding the ban on the use of the active ingredient paraquat pesticide in weed control. As an implementation of this policy, PSPN shows a Farmer's Pocket Book Calendar and PSPN Farmer Activity Recording Form which explains the recording of pesticide spraying and use starting from the date of application, trademark, purchase price, type of pesticide, active ingredient and application dosage. For example, a farmer with Sunardi B from the SIM farmer group works using the pesticide brand Bablas 490 SL (the active ingredient isopropyl amine gifosat) at a dose of 100 ml/tank.



<p>PSPN also shows the List of Herbicides used by farmers/members which has been determined on August 30<sup>th</sup>, 2023, by the Chairman of the ICS Management. In the document it is known that there are no pesticides with the active ingredient paraquat.</p> <p>Based on the description above, it can be concluded that PSPN has implemented BMP for all use of pesticides including prohibiting the use of pesticides by pregnant and lactating women and avoiding pesticides with the active ingredient paraquat.</p>	
<p>Status: Comply</p>	
<p><b>4.9</b>  <b>The group and smallholders manage pests, diseases, weeds and invasive introduced species using appropriate techniques, including but not limited to Integrated Pest Management (IPM) techniques.</b></p>	
<p>E                  Not Applicable.</p> <p>MS-A                  PSPN has included all members/farmers in pesticide use training, as follows:</p> <ul style="list-style-type: none"> <li>• GAP training on IPM control which was held on September 22<sup>nd</sup>, 2022. The training discussed the control of horn beetle pests (<i>Oryctes rhinoceros</i>).</li> <li>• GAP weed control training which was held on December 11<sup>th</sup>, 2022. The training discussed mechanical weed control.</li> </ul> <p>The training was held by Koltiva and accompanied by ICS administrators with a mechanism for imparting knowledge and implementing it directly on farmers' fields. GAP training is routinely held on various topics on best management practices for Integrated Pest Management, for example, use of pesticides, control of pests and plant diseases, weeds, introduction of invasions and others.</p> <p>Based on the results of interviews with sample farmers from 3 farmer groups (SMT, SND and SIM), information was obtained that the farmers had understood the training material presented.</p> <p>MS-B                  PSPN has:</p> <ul style="list-style-type: none"> <li>• IPM Control SOP Number 01/SOP-U-PHT/XI/2022 which was ratified on November 3<sup>rd</sup>, 2022, by the Chairman of the ICS Management.</li> <li>• Palm Oil Weed Control SOP Number 04/SOP-U-Penuluhan/XI/2022 which was ratified on November 3<sup>rd</sup>, 2022, by the Chairman of the ICS Management.</li> </ul> <p>Based on the results of interviews with sample farmers, information was obtained that farmers understood the application of IPM in managing their land in accordance with applicable procedures. Some farmers stated that they control pests mechanically before using chemicals. Mechanical control is carried out by cutting weeds. Farmers also stated that pest and disease monitoring is carried out regularly, namely every 3 or 6 months (during fertilization and spraying activities). Then, ICS officers will monitor pest and disease control carried out by members once a year. Then from the results of the field visit it was discovered that there were no indications of pest and disease attacks on the farmers' land and the farmers' land areas were also spread over many locations (not in one area), so the potential for pest and disease attacks was low.</p> <p>From the description above, it can be concluded that PSPN and farmers have maximized the use of the IPM approach to minimize the use of pesticides and herbicides in their estates.</p>	
<p>Status: Comply</p>	



3.2 Conformity Checklist of Certificate and Trademark Use

1.	Evidence of permission or approval certificate and trademark from Certification Body which submitted by Client.
MS-B	Perkumpulan Sejahtera Pelita Nusantara does not use RSPO trademark.
	Status: Comply
2.	Implementation of certificate and trademark used by Client comply with size and type (shape) against Guideline of trademark Use
MS-B	Perkumpulan Sejahtera Pelita Nusantara does not use RSPO trademark.
	Status: Comply
3.	Implementation of Certificate and Trademark is not used on product
MS-B	Perkumpulan Sejahtera Pelita Nusantara does not use RSPO trademark.
	Status: Comply
4.	Controlling of Certificate and Trademark, including withdrawing inappropriate trademark.
MS-B	Perkumpulan Sejahtera Pelita Nusantara does not use RSPO trademark.
	Status: Comply

**3.3. Identification of Findings, Corrective Action, Observations, Opportunity for Improvement and Noteworthy Positive Components.**

**3.3.1 Identification of Findings, Corrective Actions and Observations at MS-B Assessment**

NCR No.	: 2023.01	Issued by	: Kiki Fadli
Date Issued	: 31 August 2023	Time Limit	: 30 August 2024 (Recommendation May 31, 2024)
NC Grade	: Major	Date of Closing	: 16 September 2023
Standard Ref. & Requirement	: A.1.4 MS-A All members can demonstrate understanding of membership requirements.		
<p><b>Evidence observed (filled by auditor):</b></p> <ul style="list-style-type: none"> <li>PSPN (Smallholder) shows the SOP Criteria and Requirements for New Members with No. 01/SOP-U-PELPED/X/2022 dated 3 October 2022 which explains the requirements for prospective new members such as filling out the member registration form, the planter's statement form and the land tenure history form (Land Dispute).</li> <li>Based on interviews with sample farmers in the CMT, CND and SIM farmer groups, it was stated that the farmers had not signed and were not aware of the land tenure history form (Land Dispute), and at the time of the audit, evidence could not be shown that the land tenure history form was available (Land Dispute) signed by farmers, the ICS team and third parties.</li> </ul> <p><b>Non-Conformance Description (filled by auditor):</b> PSPN (Smallholder) has not been able to show proof that the membership requirements have been signed, especially regarding the land tenure history form (Land Dispute).</p> <p><b>Root Cause Analysis (filled by organization audited):</b></p> <ul style="list-style-type: none"> <li>ICS's understanding of fulfilling RSPO membership requirements based on RISS 2022 is still not optimal.</li> <li>The ICS PSPN Registration Unit is not yet running optimally in relation to checking and verifying the completeness of data and forms for new farmers who will register as PSPN members.</li> </ul> <p><b>Correction (filled by organization audited):</b></p> <ul style="list-style-type: none"> <li>Demonstrate completeness of land dispute documents for all farmers and the required information.</li> <li>Demonstrate the implementation of socialization activities regarding land dispute material as a form of refreshment for farmers.</li> </ul> <p><b>Corrective Action (filled by organization audited):</b></p> <ul style="list-style-type: none"> <li>Create a training and outreach program to all ICS PSPN members and to all PSPN farmers regarding all complete documents to fulfill the requirements for RSPO certification farmers based on RISS (RSPO Independent Smallholder standard) 2022 at least once a year during the certification period.</li> <li>ICS PSPN Registration Unit ensures and verifies that all farmers who will become new PSPN members have signed and understand the fulfillment of all the requirements for registering as farmers in PSPN. This is in accordance with the ICS PSPN Registration Unit jobdesc, Member Suggestions and Complaints No:05/JD-U-PENDAFTARAN/IX/2022.</li> </ul> <p><b>Assessor Evaluation and Conclusion (filled by auditor):</b></p> <p><b>Auditor Verification dated September 12, 2023</b></p> <ul style="list-style-type: none"> <li>Smallholders have shown evidence of improvement in the form of:</li> <li>Disclosure forms that have been signed by farmers, for example farmers with the initials LL from the Cut Nyak Dien Farmers Group who have signed on September 1 2023 with the status of land having no conflict which has also been known by the village head and head of the association.</li> <li>Socialization regarding procedures and fulfillment of complete member requirements will be carried out on September 1 2023.</li> </ul> <p>However, smallholders have not been able to show and explain the following:</p> <ul style="list-style-type: none"> <li>In the root of the problem section ¶ Regarding the first and second (-) strips, to be able to review the root of the problem or cause of the Land Dispute Form not being distributed and signed to all farmers and not being stated in writing.</li> </ul>			

- In the corrective action section □ To be able to add corrective action from the root of the new problem.
- In the corrective action section □ Regarding the first (-) strip, to be able to show a document that includes the matter of "management of registration documents by PSPN internal ICS and reported at least once every 6 months in the ICS report, please show it.
- In the corrective action section □ Related to the third (-) strip, to show changes in the ICS structure.

Based on this, the discrepancy in this indicator has not been met.

**Auditor Verification dated September 16, 2023**

Smallholders have shown evidence of improvement in the form of:

- Smallholders plan a training program for ICS and association members which is carried out at least once a year.
- Smallholder shows the ICS PSPN Registration Unit jobdesc, Member Suggestions and Complaints with No. 05/JD-U-PENDAFTARAN/IX/2022 which was issued on 21 September 2022 which explains the duties and responsibilities of the relevant units in verifying the fulfillment of all the requirements required to register as a farmer at PSPN.

Based on this, the discrepancy in this indicator has been fulfilled and will be observed in the next assessment.

Follow up on next audit (filled by auditor):

Verified by : Kiki Fadli

NCR No.	: 2023.02	Issued by	: Kiki Fadli
Date Issued	: 31 August 2023	Time Limit	: 30 August 2024 (Recommendation May 31, 2024)
NC Grade	: Major	Date of Closing	: 16 September 2023
Standard Ref. & Requirement	D.3.1 E: The group and group manager have agreed on how the premiums should be used and the agreement is recorded and communicated to the group members. Prices, premiums, and timing of premium payment are clearly communicated and transparent to all group members. Premiums disbursed to members at all stages are recorded and the premiums are paid in a timely and convenient manner.		
<b>Evidence observed (filled by auditor):</b> <ul style="list-style-type: none"> <li>PSPN (Smallholder) has SOP on the Use of RSPO Credit Sales Funds with No. 10/SOP-GM/IX/2022, among other things, informs the allocation of distribution of funds for the sale of certificates, including the following::               <ul style="list-style-type: none"> <li>30% of the total proceeds for deposit funds for preparation of external audits.</li> <li>20% of total receipts for additional working capital.</li> <li>20% of total revenue for operational activities such as training, office stationery, adding members, etc.</li> <li>30% of total revenue for distribution of incentives for members.</li> </ul> </li> <li>Based on interviews with sample farmers in the CMT, CND and SIM farmer groups, it is known that there are some farmers who have not been able to explain the use of the RSPO Credit Sales Fund (premium).</li> <li>PSPN (Smallholder) demonstrated the socialization of the SOP on the Use of Funds for the Sale of RSPO Credit (premium) on August 23 2023 which was attended by 56 farmers, but could not yet show documentation of the agreement on the use of funds for the sale of RSPO credit (premium) and its socialization to all members of the association.</li> </ul>			
<b>Non-Conformance Description (filled by auditor):</b> PSPN (smallholder) has not been able to show sufficient evidence that the use of premiums has been agreed upon and conveyed to all members of the association.			
<b>Root Cause Analysis (filled by organization audited):</b> <ul style="list-style-type: none"> <li>The socialization process for determining premium distribution is not running optimally.</li> <li>Socialization activities (group training) were not attended by all farmers.</li> <li>Farmers' lack of understanding about the use of the term premium and the distribution of its value.</li> </ul>			
<b>Correction (filled by organization audited):</b> <ul style="list-style-type: none"> <li>Implementation of socialization activities regarding premium materials as a form of refreshment of farmer knowledge.</li> <li>Collection of farmer agreements in the form of minutes of declaration approved by all members.</li> </ul>			
<b>Corrective Action (filled by organization audited):</b> Create a training and outreach program for farmers who are already PSPN members and farmers who will become new PSPN members regarding approval of the scheme and SOP for RSPO Credit Sales Funds (Premium Fee) at least once in the 1 year certification period.			
<b>Assessor Evaluation and Conclusion (filled by auditor):</b>  <b>Auditor Verification dated September 12, 2023</b> Smallholders have shown evidence of improvement in the form of: <ul style="list-style-type: none"> <li>Declaration of agreement on the distribution of premiums for the PSPN group which was signed by all members on September 1 2023 which contains agreement on the distribution of premium fees that will be obtained, namely to be used for external audit funds of 30%, additional business capital of 20%, operations of 20% and distribution for members by 30%.</li> </ul>			

- Socialization regarding procedures and distribution of PSPN group premiums will be carried out on September 1 2023.

However, smallholders need to improve the corrective action, because the corrective action submitted is not related to the root of the problem that arises.

Based on this, the nonconformity in this indicator has not been met.

**Auditor Verification dated September 16, 2023**

Smallholders have planned a training program for ICS and members regarding approval of the RSPO Credit Sales Fund (Premium Fee) scheme and SOP at least once a year.

Based on this, the discrepancy in this indicator has been fulfilled and will be observed in the next assessment.

Follow up on next audit (filled by auditor):

Verified by : Kiki Fadli

3.3.3. Opportunity for Improvement

No	Ref. Std.	Description
1	A.2.3	<p><b>MS-B:</b> All members attended training and can demonstrate understanding of the ISH Standard, group management and certification requirements including awareness on BMPs, HCV, environmental protection, social welfare of workers and business operations.</p> <p>Perkumpulan Sejahtera Pelita Nusantara has provided training and outreach to farmers, namely training on good agricultural practice (GAP), training related to HCV, management of hazardous materials, for example those carried out in:</p> <ul style="list-style-type: none"> <li>• RSPO P&amp;C socialization on 15-18 March 2023 which was attended by 76 people.</li> <li>• Socialization on OHS and child labor on March 2 2023, which was attended by 30 participants.</li> <li>• Socialization of the Use of RSPO Credit Sales Funds (premiums) on 23 August 2023 which was attended by 56 participants.</li> <li>• Socialization of SOP and HCV on 31 May 2023 which was attended by 36 participants.</li> </ul> <p>Based on the results of document verification and interviews with ICS management, it is known that PSPN already has a plan to conduct outreach and training to all members and also conveyed by the ICS management, that gradually the ICS team will carry out socialization and training to all members according to the time of each member.</p> <p>Based on this, PSPN has the opportunity to carry out planned socialization and training documentation activities so that it can prove that all members of the association have received the same socialization and training.</p>
2	1.3	<p><b>MS-B:</b> Smallholders have adopted GAP on their farms and are tracking productivity through, but not limited to, records of FFB sales</p> <p>PSPN has SOP Monitoring and Member Assessment Number 11/SOP-GM/IX/2022 Revision 1 which was stipulated on 29 August 2023 by the Chairman of the ICS Board. The procedure regulates monitoring of members which is carried out at least once a month with the aim of monitoring the recording of FFB harvest and sales, fertilization, pruning, use of chemicals and monitoring of B3 packaging at members/farmers' homes. Monitoring activities are carried out by ICS administrators by visiting all farmers' houses periodically.</p> <p>ICS management representatives stated that all members/farmers were given the 2023 Farmer's Pocket Book Calendar which contained information about the GAP guidelines and notes related to work carried out such as harvesting, fertilizing, pruning and using pesticides. During monitoring activities, the ICS management will record the information obtained from the Farmer's Pocket Book Calendar into the PSPN Farmer Activity Recording Form document which will later be used as a management data base at the ICS level.</p> <p>The results of a study of the PSPN Farmer Activity Recording Form document for 21 sample farmers from 3 farmer groups (CMT, CND and SIM) revealed that the ICS management only recorded members/farmers' harvests on the form. Regarding recording of other work such as fertilization and pesticide use, each farmer has recorded it in the 2023 Farmer's Pocket Book Calendar, for example:</p> <ul style="list-style-type: none"> <li>• The farmer with Suharsono from the CND farmer group carried out work using the trademark pesticide <i>Bablas 490 SL</i> (active ingredient isopropyl amine glyphosate) at a dose of 100 ml/tank and fertilization work using <i>NPK Phonska</i>, <i>Urea</i> and <i>Dolomite</i> fertilizer at a dose of 1 kg/Ha.</li> </ul>



No	Ref. Std.	Description
		<ul style="list-style-type: none"> <li>The farmers with Tardi from the CMT farmer group carry out work using the trademark pesticide Ridox 480L (active ingredient isopropyl amine glyphosate) at a dose of 100 ml/tank and fertilization work using <i>NPK Phonska</i> and <i>Urea</i> fertilizer at a dose of 1 kg/Ha.</li> </ul> <p>From the description above, it can be concluded that PSPN and ICS administrators have the opportunity to optimize member monitoring activities and ensure recording of GAP implementation by members/farmers in the PSPN Farmer Activity Recording Form.</p>
3	2.1	<p><b>MS-A:</b> Smallholders can demonstrate legal ownership or native and/or customary rights to use the land or demonstrate that they are in the process of legalisation of that right.</p> <p><b>MS-A Explanation :</b> Independent smallholders are encouraged to increase their legality status of their land by having a plan towards applying for a SHM and a plan for registering their Plantation Business (<i>STDB/Surat Tanda Daftar Usaha Budidaya Perkebunan</i>) as well as a plan toward applying <i>Surat Pernyataan Pengelolaan Lingkungan/ SPPL</i> (Declaration Letter to Manage Environment).</p> <p><b>SHM</b> Based on the results of the document review, it is known that out of 270 PSPN members, there are 3 members whose land ownership status is still in the form of SKT. Based on this, PSPN has the opportunity to develop plans and continue to show positive progress to improve the legal status of land so that in the end all members have land legality in the form of SHM.</p> <p><b>STDB</b> PSPN (Smallholder) showing STDB statement in the manufacturing process with No. 525/1278 dated 25 August 2023 issued by the Aceh Utara District Plantation, Livestock and Animal Health Service which explained that STDB was in the process of managing 270 people, 402 as land parcels and a land area of 568.65 Ha and the STDB team from the Aceh Utara District Service also visited the farmer's fields. Based on this, PSPN has the opportunity to plan and continue to show positive progress in following up on STDB management.</p> <p><b>SPPL</b> Based on the results of the document review, it is known that out of 270 PSPN members, there are 136 members who do not yet have an SPPL. Based on this, PSPN has the opportunity to develop a plan and continue to show positive progress in following up on SPPL management.</p>
4	4.8	<p><b>MS-A :</b> Smallholders complete training on BMPs for pesticides including pesticide usage, awareness on risks for pregnant and breastfeeding women and young workers; storage and disposal; paraquat and pesticides listed by WHO Class 1A or 1B, the Stockholm or Rotterdam Conventions (and in compliance with 3.5).</p> <p>PSPN has established SOPs related to the management of used chemical containers as stated in SOP Number 02/SOP-U-B3K3/IX/2022 dated August 16<sup>th</sup>, 2022, which includes information that used chemical containers must be stored properly in a temporary storage warehouse, documented and protected from possible theft and contamination.</p> <p>From the results of field observations, it was found that PSPN already has a storage warehouse located at the PSPN office and has carried out cooperation in continuing storage to temporary storage of hazardous toxic and waste which is licensed with the company (PT Seuramoe Agro Persada) on August 1<sup>st</sup>, 2023. Therefore, PSPN has the opportunity to improving the facilities and infrastructure at the hazardous toxic and waste</p>

No	Ref. Std.	Description
		temporary storage warehouse and monitoring and outreach to members regarding the implementation of hazardous toxic and waste management.

#### 3.3.4. Noteworthy Positive Components

No	Description
1	Have a commitment to implementing the principles of sustainable palm oil management
2	Good coordination and presentation of documents by the companion team

3.4 Summary of Arising Issues from Public and Auditor Verification.

Public Issues (Institution/ NGO/Community)	Auditor Verification
<p>Secretary of Seureuke Village August 29<sup>th</sup>, 2023</p> <ul style="list-style-type: none"> <li>• The existence of PSPN provides positive information for the community, especially oil palm smallholders.</li> <li>• There is no negative impact from the existence of PSPN.</li> <li>• Good relationship between PSPN and village community.</li> <li>• PSPN routinely provides outreach regarding GAP to local communities to ensure equal distribution of knowledge and also as a way to invite farmers to join. There is no compulsion in recruiting small farmers to become PSPN members.</li> <li>• Farmers who are members of the PSPN already know the best plantation practices and environmental management in cultivation activities on their land.</li> </ul>	<p>There's no negative issue need to be further clarification.</p>
<p>Land Office, Aceh Utara Village August 30<sup>th</sup>, 2023</p> <ul style="list-style-type: none"> <li>• The majority of PSPN farmers already have <i>SHM</i> and some farmers who have <i>SKT</i> are being processed to make <i>SHM</i></li> <li>• There are no cases of overlapping land and no cases of environmental pollution.</li> <li>• Good cooperative relations with government agencies.</li> </ul>	<p>There's no negative issue need to be further clarification.</p>
<p>Environmental Agency, Aceh Utara Districts August 29<sup>th</sup>, 2023</p> <ul style="list-style-type: none"> <li>• Of the 270 farmers registered as PSPN members, there are 136 farmers who are still in the process of issuing <i>SPPL</i>. The <i>SPPL</i> creation process uses <i>OSS</i>.</li> <li>• No cases of environmental pollution.</li> <li>• There have been no cases of land fires in the last 2 years</li> <li>• Good cooperative relationship with the government agencies.</li> <li>• PSPN has been orderly and has a partnership with PT SAP in the management of hazardous toxic and waste</li> <li>• Farmers understand best management practices and environmental management because they are members of the PSPN</li> </ul>	<p>There's no negative issue need to be further clarification</p>
<p>Plantation Agency, Aceh Utara Districts August 29<sup>th</sup>, 2023</p> <ul style="list-style-type: none"> <li>• <i>STDB</i> for PSPN farmers is still in the verification process by the agency</li> <li>• For the past 2 years there have been no cases of land fires</li> <li>• There were no cases of land claims or land overlapping</li> <li>• Farmers understand best management practices and environmental management because they are members of the PSPN</li> </ul>	<p>There's no negative issue need to be further clarification</p>

Public Issues (Institution/ NGO/Community)	Auditor Verification
<ul style="list-style-type: none"><li>• PSPN assists the government in making government programs successful</li></ul>	

4.0	CERTIFIED ORGANISATION'S ACKNOWLEDGEMENT OF INTERNAL RESPONSIBILITY						
4.1	Formal Sign-off of Assessment Findings						
	<p>Hereunder sign by management representative from inspected company to acknowledge a field assessment and agree for all content explained in this assessment report, included of non-compliance findings.</p> <p>Signed on behalf of:</p> <table border="0" data-bbox="389 819 1347 1155"><tr><td data-bbox="389 819 812 903">Perkumpulan Sejahtera Pelita Nusantara Group Manager</td><td data-bbox="1104 819 1347 903">Mutuagung Lestari Lead Auditor</td></tr><tr><td data-bbox="535 882 828 1113"> </td><td data-bbox="1088 924 1331 1029"></td></tr><tr><td data-bbox="454 1092 730 1155"><u>Sudikan</u> Friday, 22 September 2023</td><td data-bbox="1071 1092 1347 1155"><u>Leonada</u> Friday, 22 September 2023</td></tr></table>	Perkumpulan Sejahtera Pelita Nusantara Group Manager	Mutuagung Lestari Lead Auditor	 		<u>Sudikan</u> Friday, 22 September 2023	<u>Leonada</u> Friday, 22 September 2023
Perkumpulan Sejahtera Pelita Nusantara Group Manager	Mutuagung Lestari Lead Auditor						
 							
<u>Sudikan</u> Friday, 22 September 2023	<u>Leonada</u> Friday, 22 September 2023						

Appendix 1. List of Stakeholder Contacted in the RSPO Certification Process

No	Institution/ NGO/ Community	Address	Phone/ Email	Type of Communication	Date of Contact	Response	
						Yes	No
1	Environment Agency	Aceh Utara District	-	Telephone	August 29 <sup>th</sup> , 2023	√	
2	Plantation Agency	Aceh Utara District	-	Telephone	August 29 <sup>th</sup> , 2023	√	
3	Land Agency	Aceh Utara District	-	Telephone	August 29 <sup>th</sup> , 2023	√	
4	Seureuke village secretary	Aceh Utara District	-	Direct Interview	August 29 <sup>th</sup> , 2023	√	
5	WALHI	Jakarta	<a href="mailto:info@walhi.or.id">info@walhi.or.id</a>	Questionnaire	August 22 <sup>nd</sup> , 2023		√
6	AMAN	Jakarta	<a href="mailto:informasi@walhi.or.id">informasi@walhi.or.id</a>	Questionnaire	August 22 <sup>nd</sup> , 2023		√
7	WWF Indonesia	Jakarta	<a href="mailto:wwf-indonesia@wwf.or.id">wwf-indonesia@wwf.or.id</a>	Questionnaire	August 22 <sup>nd</sup> , 2023		√
8	Sawit Watch	Jakarta	<a href="mailto:info@sawitwatch.or.id">info@sawitwatch.or.id</a>	Questionnaire	August 22 <sup>nd</sup> , 2023		√
9	Interviews with 21 farmers in each farmer group (CMT, CND and SIM)	Aceh Utara District	-	Direct Interview	August 29 <sup>th</sup> , 2023	√	



**Appendix 2. Assessment Program**

DATE	28-31 August 2023	
TIME PLAN	PROCESS / THINGS TO BE AUDITED	AUDITOR
<b>Monday, 28 August 2023</b>		
08.00 – 10.20 13.05 – 14.15 14.30 – 16.30	<ul style="list-style-type: none"> <li>Jakarta (CGK) → Kualanamu (KNO) / Batik Air ID 6882</li> <li>Kualanamu (KNO) → Malikussaleh (LSW) / Wings Air IW 1250</li> <li>Bandara → Site</li> </ul>	LEO/KID/RIS/ATP
16.30 – 17.30	<b>Opening meeting</b> <ul style="list-style-type: none"> <li>Auditee Presentation (PIC Introduction, Company Profile)</li> <li>Auditor Team Speech (Introduction, Audit Objective, Audit Scope, Audit Plan Discussion, Determine of Audit Sample, Transparency and Confidentiality Clarification)</li> </ul>	LEO/KID/RIS/ATP
<b>Tuesday, 29 Agustus 2023</b>		
08.00 – 12.00	<b>Konsultasi Publik:</b> <ul style="list-style-type: none"> <li>Public Consultation with relevant agencies in Aceh Utara District</li> <li>Public consultation with Village officials around the audit location</li> <li>Interviews with the ICS Team or the management of cooperatives and farmer groups</li> </ul>	KID
08.00 – 12.00	Field Visits and interview to land owner	RIS/ATP
12.00 – 14.00	Break	LEO/KID/RIS/ATP
14.00 – 16.30	<ul style="list-style-type: none"> <li>Document Verification</li> <li>Continuing Field Visits and interview to land owner</li> </ul>	LEO/KID/RIS/ATP
16.30 – 17.00	Daily progress	LEO/KID/RIS/ATP
<b>Wednesday, 30 August 2023</b>		
08.00 – 12.00	Document Verification	LEO/KID/RIS/ATP
12.00 – 14.00	Break	LEO/KID/RIS/ATP
14.00 – 16.30	Document Verification	LEO/KID/RIS/ATP
16.30 – 17.00	Daily progress	LEO/KID/RIS/ATP
<b>Thursday, 31 August 2023</b>		
08.00 – 10.00	<b>Closing Meeting</b> <ul style="list-style-type: none"> <li>Submission of audit results (notes of positive components, non-conformities, OFI, improvement deadlines and conclusions)</li> <li>Comments, feedback and discussion</li> </ul>	LEO/KID/RIS/ATP
10.00 – 12.30	Site → Bandara	LEO/KID/RIS/ATP
14.35 – 15.35 17.00 – 19.25	<ul style="list-style-type: none"> <li>Malikussaleh (LSW) → Kualanamu (KNO) / Wings Air IW 1251</li> <li>Kualanamu (KNO) → Jakarta (CGK) / Batik Air ID 8891</li> </ul>	LEO/KID/RIS/ATP

Appendix 3. Smallholder Data

No.	Smallholder Name	Location	Coordinate		Area (Ha)		Actual FFB (Jan-Jul 2023)	Yield	Projection FFB	Yield	Date of Joining	Date of Leaving
			Village	Latitude (N)	Longitude (E)	Total Area	Production Area	Production (MT/Year)	(MT/Ha/ Year)	Production (MT/Year)		
Sub District of Langkahan, District of Aceh Utara, Province of Aceh, Indonesia												
1.	Abdul Azis	Seureuke Village	4° 53' 52.138" N	97° 25' 9.142" E	2.000	0.000	0.00	0.00	1.40	0.70	05 October 2022	-
2.	Abdulrahman	Seureuke Village	4° 53' 20.387" N	97° 26' 33.810" E	2.000	2.000	24.82	21.27	44.58	22.29	01 October 2022	-
3.		Seureuke Village	4° 52' 20.374" N	97° 25' 42.111" E	0.400	0.400	5.84	25.03	10.80	27.00	01 October 2022	-
4.		Seureuke Village	4° 53' 14.465" N	97° 26' 14.296" E	2.000	0.000	0.00	0.00	1.40	0.70	01 October 2022	-
5.	Abdurrahman	Seureuke Village	4° 53' 3.773" N	97° 26' 14.260" E	2.000	0.000	0.00	0.00	1.40	0.70	01 October 2022	-
6.	Ageng Prasestia Aji	Seureuke Village	4° 53' 36.677" N	97° 24' 59.989" E	2.000	0.000	0.00	0.00	1.40	0.70	01 October 2022	-
7.		Seureuke Village	4° 54' 44.321" N	97° 26' 1.976" E	2.000	0.000	0.00	0.00	1.40	0.70	01 October 2022	-
8.	Ahmad Ghuffroni	Seureuke Village	4° 54' 22.306" N	97° 25' 12.286" E	2.000	2.000	23.36	20.02	41.98	20.99	03 October 2022	-
9.	Ahmad Hidayat	Seureuke Village	4° 55' 4.170" N	97° 25' 56.235" E	2.000	2.000	7.30	6.26	13.39	6.70	01 October 2022	-
10.		Seureuke Village	4° 53' 13.436" N	97° 26' 3.569" E	2.000	2.000	23.36	20.02	41.98	20.99	01 October 2022	-
11.	Ahmad Junarto	Seureuke Village	4° 51' 44.043" N	97° 26' 2.484" E	2.000	0.000	0.00	0.00	1.40	0.70	05 October 2022	-
12.		Seureuke Village	4° 51' 59.334" N	97° 26' 15.894" E	1.000	1.000	7.45	12.77	13.66	13.66	05 October 2022	-
13.		Seureuke Village	4° 51' 58.328" N	97° 26' 18.835" E	1.000	1.000	13.43	23.02	24.31	24.31	05 October 2022	-
14.		Seureuke Village	4° 51' 57.913" N	97° 26' 21.225" E	0.430	0.430	6.06	24.16	11.19	26.02	05 October 2022	-
15.	Alfiah	Seureuke Village	4° 51' 44.223" N	97° 25' 53.255" E	1.000	1.000	11.68	20.02	21.19	21.19	01 October 2022	-
16.	Ali Mustafa	Seureuke Village	4° 52' 56.529" N	97° 26' 10.085" E	2.000	2.000	9.31	7.98	16.97	8.49	03 October 2022	-
17.	Alimin	Seureuke Village	4° 51' 50.035" N	97° 25' 18.661" E	1.000	1.000	15.18	26.02	27.42	27.42	03 October 2022	-
18.	Anam Ashari	Seureuke Village	4° 53' 2.825" N	97° 25' 49.932" E	1.000	1.000	14.45	24.77	26.12	26.12	06 October 2022	-
19.		Seureuke Village	4° 53' 5.271" N	97° 25' 51.807" E	1.000	1.000	14.45	24.77	26.12	26.12	06 October 2022	-
20.	Andi	Seureuke Village	4° 52' 13.152" N	97° 25' 45.563" E	1.000	1.000	12.41	21.27	22.49	22.49	03 October 2022	-
21.	Andi Suryandi	Seureuke Village	4° 54' 11.693" N	97° 25' 29.402" E	2.000	2.000	22.63	19.40	40.68	20.34	01 October 2022	-
22.		Seureuke Village	4° 55' 9.169" N	97° 25' 39.999" E	0.670	0.670	6.86	17.55	12.61	18.82	01 October 2022	-
23.	Arbianto	Seureuke Village	4° 53' 15.839" N	97° 26' 6.390" E	2.000	0.000	0.00	0.00	1.40	0.70	03 October 2022	-
24.	Ari Pradana Putra	Seureuke Village	4° 52' 45.290" N	97° 26' 16.882" E	2.000	2.000	4.38	3.75	8.20	4.10	01 October 2022	-
25.	Arifin	Seureuke Village	4° 53' 43.734" N	97° 26' 31.720" E	2.000	0.000	0.00	0.00	1.40	0.70	03 October 2022	-
26.		Seureuke Village	4° 54' 11.715" N	97° 26' 21.256" E	2.000	0.000	0.00	0.00	1.40	0.70	03 October 2022	-
27.	Ashadi	Seureuke Village	4° 52' 5.966" N	97° 26' 44.347" E	0.910	0.910	11.39	21.46	20.67	22.71	01 October 2022	-
28.	Ashari	Seureuke Village	4° 54' 38.155" N	97° 26' 1.860" E	2.000	2.000	17.81	15.27	32.10	16.05	01 October 2022	-
29.	Asri	Seureuke Village	4° 53' 18.474" N	97° 26' 8.550" E	2.000	2.000	10.22	8.76	18.59	9.30	01 October 2022	-
30.	Asroi	Seureuke Village	4° 53' 16.566" N	97° 26' 54.585" E	0.760	0.760	8.21	18.52	15.01	19.75	03 October 2022	-
31.		Seureuke Village	4° 54' 50.597" N	97° 25' 58.657" E	2.000	0.000	0.00	0.00	1.40	0.70	03 October 2022	-
32.		Seureuke Village	4° 55' 6.215" N	97° 25' 51.051" E	2.000	0.000	0.00	0.00	1.40	0.70	03 October 2022	-
33.		Seureuke Village	4° 54' 44.639" N	97° 26' 5.681" E	2.000	0.000	0.00	0.00	1.40	0.70	03 October 2022	-
34.	Awan Suryanto	Seureuke Village	4° 53' 50.450" N	97° 25' 30.796" E	2.000	2.000	20.44	17.52	36.78	18.39	05 October 2022	-
35.		Seureuke Village	4° 53' 47.073" N	97° 25' 32.186" E	2.000	2.000	16.35	14.01	29.50	14.75	05 October 2022	-
36.	Badri Astuti	Seureuke Village	4° 54' 10.976" N	97° 25' 13.290" E	2.000	2.000	23.36	20.02	41.98	20.99	03 October 2022	-
37.	Bambang Hariamin	Seureuke Village	4° 54' 32.041" N	97° 25' 51.631" E	2.000	2.000	22.19	19.02	39.90	19.95	03 October 2022	-
38.		Seureuke Village	4° 54' 19.301" N	97° 26' 19.362" E	2.000	0.000	0.00	0.00	1.40	0.70	03 October 2022	-
39.	Bambang Susanto	Seureuke Village	4° 52' 4.481" N	97° 25' 49.995" E	0.912	0.912	15.48	29.10	27.95	30.65	05 October 2022	-

No.	Smallholder Name	Location	Coordinate		Area (Ha)		Actual FFB (Jan-Jul 2023)	Yield	Projection FFB	Yield	Date of Joining	Date of Leaving
			Village	Latitude (N)	Longitude (E)	Total Area	Production Area	Production (MT/Year)	(MT/Ha/ Year)	Production (MT/Year)		
40.		Seureuke Village	4° 52' 4.082" N	97° 25' 47.058" E	1.000	1.000	11.90	20.40	21.58	21.58	05 October 2022	-
41.		Seureuke Village	4° 52' 4.318" N	97° 25' 52.723" E	0.790	0.790	9.05	19.64	16.51	20.90	05 October 2022	-
42.	Bambang Sutoyo	Seureuke Village	4° 53' 6.543" N	97° 26' 11.575" E	2.000	2.000	15.88	13.61	28.67	14.34	01 October 2022	-
43.	Budi	Seureuke Village	4° 54' 17.981" N	97° 25' 27.808" E	2.000	2.000	23.80	20.40	42.76	21.38	05 October 2022	-
44.	Budi Anto	Seureuke Village	4° 54' 44.786" N	97° 26' 15.617" E	2.000	2.000	7.30	6.26	13.39	6.70	01 October 2022	-
45.		Seureuke Village	4° 53' 52.381" N	97° 25' 12.532" E	2.000	0.000	0.00	0.00	1.40	0.70	05 October 2022	-
46.		Seureuke Village	4° 52' 46.232" N	97° 26' 11.105" E	2.000	2.000	16.94	14.52	30.55	15.28	05 October 2022	-
47.		Seureuke Village	4° 53' 28.643" N	97° 26' 32.679" E	2.000	0.000	0.00	0.00	1.40	0.70	05 October 2022	-
48.	Cucuk Sutarno	Seureuke Village	4° 53' 12.339" N	97° 26' 11.462" E	2.000	0.000	0.00	0.00	1.40	0.70	05 October 2022	-
49.		Seureuke Village	4° 54' 7.851" N	97° 25' 17.463" E	2.000	0.000	0.00	0.00	1.40	0.70	05 October 2022	-
50.		Seureuke Village	4° 54' 26.751" N	97° 26' 9.183" E	2.000	0.000	0.00	0.00	1.40	0.70	05 October 2022	-
51.		Seureuke Village	4° 53' 1.511" N	97° 25' 41.057" E	2.000	2.000	25.19	21.59	45.24	22.62	05 October 2022	-
52.	Darmaji	Seureuke Village	4° 54' 7.162" N	97° 25' 27.757" E	0.750	0.750	13.29	30.38	24.06	32.08	03 October 2022	-
53.	Daryono	Seureuke Village	4° 54' 19.823" N	97° 26' 0.840" E	2.000	2.000	17.52	15.02	31.59	15.80	03 October 2022	-
54.	Dewi	Seureuke Village	4° 51' 38.338" N	97° 27' 25.844" E	2.000	2.000	19.97	17.12	35.95	17.98	03 October 2022	-
55.	Dwi Iswahyudi	Seureuke Village	4° 54' 20.150" N	97° 26' 9.944" E	2.000	2.000	24.82	21.27	44.58	22.29	01 October 2022	-
56.	Dyah Ruliani	Seureuke Village	4° 52' 27.655" N	97° 26' 14.815" E	1.000	1.000	12.85	22.03	23.27	23.27	01 October 2022	-
57.		Seureuke Village	4° 54' 13.240" N	97° 26' 16.481" E	2.000	2.000	19.13	16.40	34.45	17.23	05 October 2022	-
58.		Seureuke Village	4° 54' 6.936" N	97° 25' 58.747" E	2.000	0.000	0.00	0.00	1.40	0.70	05 October 2022	-
59.		Seureuke Village	4° 54' 6.938" N	97° 25' 56.604" E	2.000	0.000	0.00	0.00	1.40	0.70	05 October 2022	-
60.	Edi Karyawanto	Seureuke Village	4° 54' 6.774" N	97° 26' 1.185" E	2.000	0.000	0.00	0.00	1.40	0.70	05 October 2022	-
61.		Seureuke Village	4° 53' 30.858" N	97° 25' 28.008" E	2.000	2.000	24.82	21.27	44.58	22.29	05 October 2022	-
62.		Seureuke Village	4° 53' 3.187" N	97° 26' 5.674" E	2.000	0.000	0.00	0.00	1.40	0.70	05 October 2022	-
63.		Seureuke Village	4° 54' 20.162" N	97° 26' 16.461" E	2.000	0.000	0.00	0.00	1.40	0.70	05 October 2022	-
64.	Edi Maksun	Seureuke Village	4° 51' 55.313" N	97° 26' 39.747" E	1.000	1.000	17.08	29.28	30.80	30.80	01 October 2022	-
65.		Seureuke Village	4° 52' 30.578" N	97° 26' 48.780" E	1.000	1.000	14.60	25.03	26.39	26.39	03 October 2022	-
66.	Edi Mulya Beti A.Md.	Seureuke Village	4° 52' 30.942" N	97° 26' 47.150" E	1.000	1.000	17.52	30.03	31.59	31.59	03 October 2022	-
67.		Seureuke Village	4° 52' 31.284" N	97° 26' 45.487" E	1.000	1.000	17.52	30.03	31.59	31.59	03 October 2022	-
68.		Seureuke Village	4° 51' 41.294" N	97° 26' 27.680" E	2.000	2.000	23.36	20.02	41.98	20.99	03 October 2022	-
69.	Edi Supriadi	Seureuke Village	4° 54' 50.770" N	97° 26' 12.004" E	2.000	0.000	0.00	0.00	1.40	0.70	05 October 2022	-
70.	Edi Triyoko	Seureuke Village	4° 54' 44.583" N	97° 25' 52.207" E	2.000	2.000	25.40	21.77	45.61	22.81	01 October 2022	-
71.	Efendi Julian	Seureuke Village	4° 53' 7.968" N	97° 25' 57.734" E	0.400	0.400	3.50	15.00	6.63	16.58	03 October 2022	-
72.	Eka Savrika Manurung	Seureuke Village	4° 52' 9.003" N	97° 26' 31.320" E	0.910	0.910	13.65	25.71	24.70	27.14	05 October 2022	-
73.	Eko Sasongko	Seureuke Village	4° 52' 57.489" N	97° 25' 34.639" E	1.000	1.000	11.39	19.53	20.67	20.67	01 October 2022	-
74.		Seureuke Village	4° 53' 33.814" N	97° 26' 19.797" E	2.000	2.000	26.86	23.02	48.21	24.11	03 October 2022	-
75.		Seureuke Village	4° 54' 38.570" N	97° 26' 8.276" E	2.000	2.000	8.76	7.51	15.99	8.00	03 October 2022	-
76.	Eko Susanto	Seureuke Village	4° 54' 50.569" N	97° 26' 2.008" E	2.000	2.000	7.30	6.26	13.39	6.70	03 October 2022	-
77.		Seureuke Village	4° 54' 15.465" N	97° 25' 11.326" E	2.000	2.000	23.36	20.02	41.98	20.99	03 October 2022	-
78.		Seureuke Village	4° 53' 8.704" N	97° 25' 30.846" E	1.000	1.000	16.94	29.04	30.55	30.55	03 October 2022	-
79.		Seureuke Village	4° 53' 50.031" N	97° 25' 17.967" E	2.000	2.000	21.32	18.27	38.35	19.18	10 October 2022	-
80.	Endi Triadi	Seureuke Village	4° 54' 2.949" N	97° 25' 18.936" E	2.000	2.000	16.64	14.26	30.02	15.01	10 October 2022	-

No.	Smallholder Name	Location	Coordinate		Area (Ha)		Actual FFB (Jan-Jul 2023)	Yield	Projection FFB	Yield	Date of Joining	Date of Leaving
			Village	Latitude (N)	Longitude (E)	Total Area	Production Area	Production (MT/Year)	(MT/Ha/ Year)	Production (MT/Year)		
81.		Seureuke Village	4° 54' 4.328" N	97° 25' 13.412" E	2.000	0.000	0.00	0.00	1.40	0.70	10 October 2022	-
82.		Seureuke Village	4° 54' 11.237" N	97° 25' 17.937" E	2.000	0.000	0.00	0.00	1.40	0.70	10 October 2022	-
83.	Erfan	Seureuke Village	4° 52' 17.796" N	97° 27' 9.744" E	0.900	0.900	8.61	16.40	15.73	17.48	01 October 2022	-
84.	Erwin Mustofa S.P.	Seureuke Village	4° 53' 22.691" N	97° 27' 21.756" E	0.800	0.800	10.22	21.90	18.59	23.24	01 October 2022	-
85.		Seureuke Village	4° 53' 22.074" N	97° 27' 18.744" E	1.000	1.000	17.52	30.03	31.59	31.59	01 October 2022	-
86.	Etik Indriyani	Seureuke Village	4° 51' 56.757" N	97° 27' 6.227" E	1.000	1.000	12.59	21.58	22.81	22.81	10 October 2022	-
87.		Seureuke Village	4° 51' 24.245" N	97° 25' 30.211" E	1.000	1.000	13.29	22.78	24.06	24.06	10 October 2022	-
88.	Evi Susanti	Seureuke Village	4° 54' 57.488" N	97° 25' 55.797" E	2.000	2.000	18.10	15.51	32.62	16.31	03 October 2022	-
89.	Fatmawati	Seureuke Village	4° 53' 4.970" N	97° 26' 37.677" E	2.000	0.000	0.00	0.00	1.40	0.70	05 October 2022	-
90.	Febi Suryani	Seureuke Village	4° 53' 22.421" N	97° 26' 36.176" E	2.000	0.000	0.00	0.00	1.40	0.70	10 October 2022	-
91.	Feri Irwansyah	Seureuke Village	4° 51' 56.621" N	97° 25' 33.119" E	1.000	1.000	14.02	24.03	25.36	25.36	10 October 2022	-
92.	Fherdi Priata K	Seureuke Village	4° 52' 11.265" N	97° 27' 8.358" E	1.000	0.000	0.00	0.00	1.40	1.40	05 October 2022	-
93.	Firmanto	Seureuke Village	4° 54' 50.196" N	97° 25' 34.815" E	0.875	0.875	13.14	25.74	23.79	27.19	05 October 2022	-
94.		Seureuke Village	4° 54' 26.877" N	97° 26' 2.720" E	2.000	2.000	23.36	20.02	41.98	20.99	05 October 2022	-
95.		Seureuke Village	4° 54' 20.190" N	97° 26' 13.207" E	2.000	2.000	26.28	22.53	47.18	23.59	05 October 2022	-
96.		Seureuke Village	4° 54' 30.939" N	97° 25' 39.991" E	2.000	0.000	0.00	0.00	1.40	0.70	05 October 2022	-
97.		Seureuke Village	4° 54' 30.809" N	97° 25' 36.716" E	2.000	0.000	0.00	0.00	1.40	0.70	05 October 2022	-
98.	Firista Ananda	Seureuke Village	4° 52' 2.341" N	97° 27' 19.382" E	0.850	0.850	11.68	23.56	21.19	24.93	10 October 2022	-
99.	Fitri Kisyani	Seureuke Village	4° 52' 18.319" N	97° 25' 52.172" E	0.500	0.500	8.91	30.55	16.26	32.52	01 October 2022	-
100.	Fitri Yuliani	Seureuke Village	4° 53' 5.584" N	97° 25' 43.574" E	0.500	0.500	10.84	37.17	19.70	39.40	10 October 2022	-
101.	Fri Hardiansyah	Seureuke Village	4° 54' 3.446" N	97° 26' 7.964" E	2.000	2.000	14.78	12.67	26.71	13.36	05 October 2022	-
102.	Gunarti	Seureuke Village	4° 52' 15.167" N	97° 27' 16.294" E	1.000	1.000	11.97	20.52	21.71	21.71	10 October 2022	-
103.	Hadi Sucipto	Seureuke Village	4° 53' 57.465" N	97° 26' 15.240" E	2.000	2.000	24.82	21.27	44.58	22.29	01 October 2022	-
104.		Seureuke Village	4° 52' 24.432" N	97° 25' 39.413" E	0.556	0.000	0.00	0.00	1.40	2.52	01 October 2022	-
105.		Seureuke Village	4° 52' 23.322" N	97° 25' 36.997" E	1.000	1.000	16.79	28.78	30.29	30.29	01 October 2022	-
106.		Seureuke Village	4° 52' 22.985" N	97° 25' 34.172" E	1.000	1.000	17.74	30.41	31.98	31.98	01 October 2022	-
107.		Seureuke Village	4° 52' 21.958" N	97° 25' 32.030" E	1.000	1.000	17.59	30.15	31.71	31.71	01 October 2022	-
108.		Seureuke Village	4° 52' 29.158" N	97° 25' 45.572" E	1.000	0.000	0.00	0.00	1.40	1.40	01 October 2022	-
109.		Seureuke Village	4° 52' 42.079" N	97° 26' 21.994" E	2.000	2.000	23.51	20.15	42.25	21.13	01 October 2022	-
110.	Hamdani	Seureuke Village	4° 54' 38.543" N	97° 26' 11.784" E	2.000	2.000	29.35	25.16	52.64	26.32	06 October 2022	-
111.	Hariyanti	Seureuke Village	4° 51' 58.860" N	97° 26' 44.238" E	1.000	1.000	11.97	20.52	21.71	21.71	05 October 2022	-
112.	Hariyanto	Seureuke Village	4° 52' 19.395" N	97° 25' 38.182" E	0.640	0.640	8.83	23.65	16.12	25.19	05 October 2022	-
113.	Huda Handayani	Seureuke Village	4° 52' 22.854" N	97° 26' 30.615" E	0.620	0.620	8.32	23.00	15.21	24.53	06 October 2022	-
114.	Imam Muslim	Seureuke Village	4° 53' 33.822" N	97° 25' 40.147" E	2.000	2.000	24.82	21.27	44.58	22.29	05 October 2022	-
115.		Seureuke Village	4° 53' 52.351" N	97° 26' 7.724" E	0.750	0.750	12.41	28.37	22.49	29.99	05 October 2022	-
116.	Imron Afansa	Seureuke Village	4° 53' 38.750" N	97° 25' 58.778" E	1.000	1.000	11.10	19.03	20.16	20.16	06 October 2022	-
117.	Ishak Gani	Seureuke Village	4° 52' 6.205" N	97° 25' 54.099" E	1.000	1.000	15.33	26.28	27.69	27.69	05 October 2022	-
118.	Iwan Fauzi	Seureuke Village	4° 51' 48.962" N	97° 27' 2.459" E	2.000	2.000	28.18	24.15	50.56	25.28	05 October 2022	-
119.	Iwan Tusiono	Seureuke Village	4° 54' 57.426" N	97° 25' 52.305" E	2.000	2.000	21.90	18.77	39.38	19.69	05 October 2022	-
120.		Seureuke Village	4° 51' 48.008" N	97° 25' 32.754" E	0.777	0.777	10.95	24.16	19.89	25.60	05 October 2022	-
121.	Jailani	Seureuke Village	4° 51' 59.262" N	97° 26' 33.090" E	0.990	0.990	15.62	27.05	28.20	28.48	06 October 2022	-
122.	Jamiat	Seureuke Village	4° 52' 5.526" N	97° 25' 39.906" E	1.000	1.000	11.17	19.15	20.28	20.28	05 October 2022	-

No.	Smallholder Name	Location	Coordinate		Area (Ha)		Actual FFB (Jan-Jul 2023)	Yield	Projection FFB	Yield	Date of Joining	Date of Leaving
			Village	Latitude (N)	Longitude (E)	Total Area	Production Area	Production (MT/Year)	(MT/Ha/ Year)	Production (MT/Year)		
123.		Seureuke Village	4° 52' 7.396" N	97° 25' 39.145" E	1.000	1.000	11.39	19.53	20.67	20.67	05 October 2022	-
124.		Seureuke Village	4° 52' 4.844" N	97° 25' 35.992" E	1.000	1.000	10.95	18.77	19.89	19.89	05 October 2022	-
125.		Seureuke Village	4° 52' 8.860" N	97° 25' 28.519" E	0.559	0.000	0.00	0.00	0.40	0.72	05 October 2022	-
126.	Jamuri	Seureuke Village	4° 52' 40.671" N	97° 26' 11.864" E	2.000	2.000	22.70	19.46	40.81	20.41	06 October 2022	-
127.		Seureuke Village	4° 52' 56.636" N	97° 26' 30.006" E	0.479	0.479	6.72	24.05	12.36	25.80	06 October 2022	-
128.		Seureuke Village	4° 52' 56.473" N	97° 26' 31.592" E	0.835	0.835	10.95	22.48	19.89	23.82	06 October 2022	-
129.	Joko	Seureuke Village	4° 55' 2.889" N	97° 25' 51.088" E	2.000	2.000	23.36	20.02	41.98	20.99	10 October 2022	-
130.	Joni	Seureuke Village	4° 53' 35.035" N	97° 25' 46.732" E	1.000	1.000	11.97	20.52	21.71	21.71	06 October 2022	-
131.		Seureuke Village	4° 51' 15.589" N	97° 25' 4.234" E	1.000	1.000	11.39	19.53	20.67	20.67	06 October 2022	-
132.	Juli Mawaddah	Seureuke Village	4° 53' 27.068" N	97° 27' 18.805" E	2.000	0.000	0.00	0.00	1.40	0.70	10 October 2022	-
133.	Juwariyah	Seureuke Village	4° 52' 55.681" N	97° 27' 14.488" E	0.250	0.250	3.65	25.03	6.90	27.60	10 October 2022	-
134.	Karim	Seureuke Village	4° 53' 7.536" N	97° 26' 40.873" E	2.000	2.000	24.82	21.27	44.58	22.29	05 October 2022	-
135.		Seureuke Village	4° 53' 8.956" N	97° 26' 35.393" E	2.000	2.000	24.82	21.27	44.58	22.29	05 October 2022	-
136.	Karino	Seureuke Village	4° 52' 51.473" N	97° 24' 57.371" E	0.520	0.520	7.15	23.57	13.13	25.25	06 October 2022	-
137.	Kartikosari	Seureuke Village	4° 53' 49.290" N	97° 27' 1.371" E	2.000	0.000	0.00	0.00	1.40	0.70	06 October 2022	-
138.	Khalik Maulizar	Seureuke Village	4° 52' 48.218" N	97° 25' 50.801" E	2.000	2.000	20.95	17.96	37.69	18.85	10 October 2022	-
139.		Seureuke Village	4° 52' 21.901" N	97° 25' 40.935" E	0.450	0.450	5.04	19.20	9.37	20.82	10 October 2022	-
140.	Kiswanto	Seureuke Village	4° 52' 39.710" N	97° 26' 53.754" E	1.000	1.000	18.43	31.59	33.21	33.21	06 October 2022	-
141.	Kiswanto	Seureuke Village	4° 52' 11.078" N	97° 26' 13.869" E	0.830	0.830	8.91	18.40	16.26	19.59	05 October 2022	-
142.	Komedi	Seureuke Village	4° 52' 48.804" N	97° 25' 42.866" E	2.000	0.000	0.00	0.00	1.40	0.70	03 October 2022	-
143.	Kusmianto	Seureuke Village	4° 51' 17.348" N	97° 26' 26.218" E	0.420	0.420	8.18	33.39	14.96	35.62	03 October 2022	-
144.	Kusnin	Seureuke Village	4° 52' 46.863" N	97° 27' 48.701" E	2.000	2.000	19.13	16.40	34.45	17.23	03 October 2022	-
145.	Kusnin	Seureuke Village	4° 52' 46.836" N	97° 26' 37.742" E	1.000	1.000	15.48	26.54	27.95	27.95	10 October 2022	-
146.		Seureuke Village	4° 52' 48.601" N	97° 26' 35.279" E	1.000	1.000	12.78	21.91	23.15	23.15	10 October 2022	-
147.	Kustiono	Seureuke Village	4° 52' 16.241" N	97° 26' 29.017" E	1.000	1.000	16.35	28.03	29.50	29.50	10 October 2022	-
148.	Kuswanto	Seureuke Village	4° 51' 53.224" N	97° 26' 48.355" E	1.000	1.000	14.82	25.41	26.78	26.78	03 October 2022	-
149.	Kuwatno	Seureuke Village	4° 54' 43.088" N	97° 25' 37.530" E	2.000	2.000	8.76	7.51	15.99	8.00	03 October 2022	-
150.	Lasimin	Seureuke Village	4° 53' 18.847" N	97° 25' 45.840" E	0.930	0.930	11.68	21.53	21.19	22.78	03 October 2022	-
151.	Listutik	Seureuke Village	4° 52' 56.484" N	97° 27' 22.910" E	1.000	1.000	17.01	29.16	30.68	30.68	03 October 2022	-
152.	Liswati	Seureuke Village	4° 53' 21.898" N	97° 27' 15.144" E	1.000	1.000	10.37	17.78	18.86	18.86	03 October 2022	-
153.	Lusy Liyani	Seureuke Village	4° 54' 17.758" N	97° 25' 37.399" E	2.000	0.000	0.00	0.00	1.40	0.70	03 October 2022	-
154.	M Abdurrahman	Seureuke Village	4° 53' 17.316" N	97° 26' 56.998" E	1.000	1.000	12.56	21.53	22.76	22.76	03 October 2022	-
155.		Seureuke Village	4° 53' 18.768" N	97° 26' 58.984" E	0.500	0.500	6.86	23.52	12.61	25.22	03 October 2022	-
156.		Seureuke Village	4° 53' 19.187" N	97° 27' 2.540" E	0.950	0.950	15.48	27.93	27.95	29.42	03 October 2022	-
157.		Seureuke Village	4° 53' 25.309" N	97° 26' 7.771" E	2.000	0.000	0.00	0.00	1.40	0.70	03 October 2022	-
158.		Seureuke Village	4° 54' 3.416" N	97° 26' 10.163" E	2.000	0.000	0.00	0.00	1.40	0.70	03 October 2022	-
159.		Seureuke Village	4° 53' 58.750" N	97° 25' 59.985" E	2.000	0.000	0.00	0.00	1.40	0.70	03 October 2022	-
160.		Seureuke Village	4° 54' 2.009" N	97° 25' 36.629" E	2.000	0.000	0.00	0.00	1.40	0.70	03 October 2022	-
161.	M Ali	Seureuke Village	4° 53' 42.915" N	97° 24' 56.064" E	2.000	0.000	0.00	0.00	1.40	0.70	03 October 2022	-
162.		Seureuke Village	4° 54' 19.370" N	97° 25' 16.193" E	2.000	0.000	0.00	0.00	1.40	0.70	03 October 2022	-
163.		Seureuke Village	4° 51' 58.487" N	97° 27' 12.625" E	0.254	0.254	3.36	22.68	6.38	25.12	06 October 2022	-
164.		Seureuke Village	4° 52' 33.902" N	97° 27' 18.721" E	0.938	0.938	12.59	23.01	22.81	24.32	06 October 2022	-



No.	Smallholder Name	Location	Coordinate		Area (Ha)		Actual FFB (Jan-Jul 2023)	Yield	Projection FFB	Yield	Date of Joining	Date of Leaving
			Village	Latitude (N)	Longitude (E)	Total Area	Production Area	Production (MT/Year)	(MT/Ha/ Year)	Production (MT/Year)		
165.		Seureuke Village	4° 53' 36.224" N	97° 26' 23.214" E	2.000	2.000	7.30	6.26	13.39	6.70	06 October 2022	-
166.	M Kusirin	Seureuke Village	4° 51' 48.320" N	97° 26' 28.745" E	2.000	2.000	23.65	20.27	42.50	21.25	06 October 2022	-
167.	M Nur	Seureuke Village	4° 51' 53.042" N	97° 25' 45.797" E	1.000	1.000	14.45	24.77	26.12	26.12	06 October 2022	-
168.	M Yunus Lubis	Seureuke Village	4° 54' 11.738" N	97° 25' 6.099" E	2.000	2.000	9.24	7.92	16.85	8.43	06 October 2022	-
169.	M Zamzuri	Seureuke Village	4° 53' 9.768" N	97° 26' 1.219" E	1.000	1.000	13.86	23.76	25.07	25.07	08 October 2022	-
170.	M. Rumain	Seureuke Village	4° 52' 7.503" N	97° 26' 37.786" E	1.000	1.000	14.78	25.34	26.71	26.71	03 October 2022	-
171.	Mahmud	Seureuke Village	4° 53' 23.485" N	97° 26' 49.073" E	2.000	2.000	24.82	21.27	44.58	22.29	03 October 2022	-
172.	Makmur Gofur	Seureuke Village	4° 51' 46.349" N	97° 25' 45.349" E	1.000	1.000	15.91	27.27	28.72	28.72	03 October 2022	-
173.	Mami Sumarsih	Seureuke Village	4° 54' 57.352" N	97° 25' 34.330" E	2.000	2.000	23.87	20.46	42.89	21.45	03 October 2022	-
174.	Manda Adinda	Seureuke Village	4° 52' 20.110" N	97° 26' 26.895" E	1.000	1.000	10.51	18.02	19.11	19.11	08 October 2022	-
175.		Seureuke Village	4° 52' 23.170" N	97° 26' 27.040" E	1.000	1.000	10.95	18.77	19.89	19.89	08 October 2022	-
176.	Mardian	Seureuke Village	4° 51' 49.704" N	97° 26' 55.148" E	2.000	2.000	25.19	21.59	45.24	22.62	06 October 2022	-
177.	Mariani	Seureuke Village	4° 53' 25.878" N	97° 26' 30.244" E	2.000	2.000	11.09	9.51	20.14	10.07	06 October 2022	-
178.		Seureuke Village	4° 53' 58.311" N	97° 25' 54.510" E	2.000	2.000	12.94	11.09	23.43	11.72	06 October 2022	-
179.	Marmi	Seureuke Village	4° 52' 12.364" N	97° 27' 20.023" E	1.000	1.000	11.17	19.15	20.28	20.28	06 October 2022	-
180.	Mela Anjarni	Seureuke Village	4° 52' 47.140" N	97° 26' 19.871" E	2.000	2.000	24.82	21.27	44.58	22.29	06 October 2022	-
181.	Mhd Yusuf	Seureuke Village	4° 54' 29.335" N	97° 25' 20.026" E	2.000	2.000	10.16	8.71	18.48	9.24	06 October 2022	-
182.		Seureuke Village	4° 52' 4.395" N	97° 25' 27.361" E	1.000	1.000	14.02	24.03	25.36	25.36	06 October 2022	-
183.	Midun	Seureuke Village	4° 54' 6.170" N	97° 26' 26.133" E	2.000	2.000	26.86	23.02	48.21	24.11	06 October 2022	-
184.	Miki Saputra	Seureuke Village	4° 51' 15.944" N	97° 26' 16.930" E	2.000	2.000	26.86	23.02	48.21	24.11	06 October 2022	-
185.	Muda Sakti	Seureuke Village	4° 51' 44.163" N	97° 27' 3.790" E	2.000	2.000	22.78	19.53	40.95	20.48	06 October 2022	-
186.	Mugi Raharjo	Seureuke Village	4° 51' 59.897" N	97° 26' 27.777" E	0.500	0.500	9.56	32.78	17.42	34.84	06 October 2022	-
187.	Muhammad	Seureuke Village	4° 53' 2.405" N	97° 26' 29.062" E	2.000	0.000	0.00	0.00	1.40	0.70	06 October 2022	-
188.	Muhammad Asrofi	Seureuke Village	4° 51' 52.239" N	97° 25' 50.601" E	1.000	1.000	15.77	27.03	28.47	28.47	06 October 2022	-
189.		Seureuke Village	4° 53' 54.473" N	97° 26' 1.124" E	0.550	0.550	7.01	21.85	12.88	23.42	08 October 2022	-
190.	Muhammad Chamdani	Seureuke Village	4° 53' 8.482" N	97° 26' 17.337" E	2.000	0.000	0.00	0.00	1.40	0.70	08 October 2022	-
191.		Seureuke Village	4° 53' 20.035" N	97° 26' 11.312" E	2.000	0.000	0.00	0.00	1.40	0.70	08 October 2022	-
192.		Seureuke Village	4° 51' 47.968" N	97° 25' 50.425" E	0.360	0.360	6.72	32.00	12.36	34.33	08 October 2022	-
193.		Seureuke Village	4° 51' 50.239" N	97° 25' 47.262" E	0.500	0.500	7.08	24.27	13.00	26.00	08 October 2022	-
194.		Seureuke Village	4° 51' 47.894" N	97° 25' 47.728" E	1.000	1.000	15.48	26.54	27.95	27.95	08 October 2022	-
195.	Muhammad Erwan	Seureuke Village	4° 51' 25.722" N	97° 24' 34.187" E	0.860	0.000	0.00	0.00	0.40	0.47	06 October 2022	-
196.	Muhammad Falal Husada	Seureuke Village	4° 52' 10.094" N	97° 26' 20.452" E	0.950	0.950	12.56	22.66	22.76	23.96	06 October 2022	-
197.	Muhammad Husin	Seureuke Village	4° 52' 14.774" N	97° 25' 24.821" E	1.000	1.000	11.68	20.02	21.19	21.19	08 October 2022	-
198.	Muhammad Ikhwani	Seureuke Village	4° 54' 39.122" N	97° 25' 25.365" E	2.000	0.000	0.00	0.00	1.40	0.70	08 October 2022	-
199.	Muhammad Nasoha	Seureuke Village	4° 52' 11.367" N	97° 27' 15.503" E	0.988	0.988	9.64	16.73	17.09	17.30	08 October 2022	-
200.	Muhammad Saleh	Seureuke Village	4° 53' 2.232" N	97° 26' 21.379" E	2.000	2.000	23.94	20.52	43.01	21.51	06 October 2022	-
201.	Muhammad Zulfahmi	Seureuke Village	4° 53' 51.844" N	97° 25' 6.254" E	2.000	0.000	0.00	0.00	1.40	0.70	08 October 2022	-
202.	Mukhtar Efendi	Seureuke Village	4° 53' 30.589" N	97° 27' 16.510" E	2.000	2.000	9.24	7.92	16.85	8.43	06 October 2022	-
203.	Mukiman	Seureuke Village	4° 52' 17.637" N	97° 26' 40.160" E	0.590	0.590	8.18	23.77	14.96	25.36	06 October 2022	-
204.	Mukminah	Seureuke Village	4° 52' 7.561" N	97° 27' 15.119" E	1.000	1.000	11.10	19.03	20.16	20.16	06 October 2022	-
205.	Mukromin	Seureuke Village	4° 51' 41.828" N	97° 25' 34.815" E	1.000	1.000	3.65	6.26	6.90	6.90	06 October 2022	-



No.	Smallholder Name	Location	Coordinate		Area (Ha)		Actual FFB (Jan-Jul 2023)	Yield	Projection FFB	Yield	Date of Joining	Date of Leaving
			Village	Latitude (N)	Longitude (E)	Total Area	Production Area	Production (MT/Year)	(MT/Ha/ Year)	Production (MT/Year)		
206.		Seureuke Village	4° 51' 40.293" N	97° 25' 33.147" E	1.000	1.000	8.76	15.02	15.99	15.99	06 October 2022	-
207.		Seureuke Village	4° 51' 37.437" N	97° 25' 35.278" E	1.000	1.000	7.45	12.77	13.66	13.66	06 October 2022	-
208.		Seureuke Village	4° 53' 4.608" N	97° 25' 55.087" E	0.563	0.563	10.51	32.00	19.11	33.94	06 October 2022	-
209.	Munthahar	Seureuke Village	4° 53' 30.340" N	97° 26' 56.660" E	2.000	0.000	0.00	0.00	1.40	0.70	08 October 2022	-
210.	Murni	Seureuke Village	4° 51' 44.596" N	97° 25' 49.751" E	1.000	1.000	15.33	26.28	27.69	27.69	08 October 2022	-
211.	Musliadi	Seureuke Village	4° 53' 29.250" N	97° 26' 45.486" E	2.000	2.000	23.36	20.02	41.98	20.99	08 October 2022	-
212.		Seureuke Village	4° 53' 33.099" N	97° 27' 11.902" E	2.000	2.000	11.09	9.51	20.14	10.07	08 October 2022	-
213.	Muslim	Seureuke Village	4° 53' 47.215" N	97° 25' 24.720" E	0.510	0.510	6.72	22.59	12.36	24.24	08 October 2022	-
214.	Muslim	Seureuke Village	4° 52' 37.740" N	97° 26' 29.957" E	0.878	0.878	10.95	21.38	19.89	22.65	06 October 2022	-
215.		Seureuke Village	4° 52' 36.921" N	97° 26' 33.501" E	0.955	0.955	10.95	19.66	19.89	20.83	06 October 2022	-
216.		Seureuke Village	4° 52' 33.736" N	97° 26' 31.851" E	1.000	1.000	14.45	24.77	26.12	26.12	06 October 2022	-
217.		Seureuke Village	4° 52' 35.065" N	97° 26' 29.086" E	1.000	1.000	10.95	18.77	19.89	19.89	06 October 2022	-
218.		Seureuke Village	4° 52' 46.009" N	97° 26' 25.729" E	2.000	2.000	7.30	6.26	13.39	6.70	06 October 2022	-
219.		Seureuke Village	4° 52' 42.099" N	97° 26' 26.768" E	2.000	2.000	8.76	7.51	15.99	8.00	06 October 2022	-
220.	Muzakir	Seureuke Village	4° 54' 22.720" N	97° 26' 26.004" E	2.000	2.000	13.86	11.88	25.07	12.54	08 October 2022	-
221.	Nafsiah	Seureuke Village	4° 53' 22.108" N	97° 26' 24.936" E	2.000	2.000	14.78	12.67	26.71	13.36	10 October 2022	-
222.	Ngatini	Seureuke Village	4° 54' 12.086" N	97° 26' 6.699" E	0.250	0.250	3.50	24.00	6.63	26.52	10 October 2022	-
223.	Ngatiran	Seureuke Village	4° 51' 56.088" N	97° 26' 16.853" E	1.000	1.000	11.17	19.15	20.28	20.28	08 October 2022	-
224.		Seureuke Village	4° 51' 47.865" N	97° 26' 18.495" E	2.000	2.000	24.09	20.65	43.28	21.64	08 October 2022	-
225.	Ngatno	Seureuke Village	4° 51' 34.470" N	97° 25' 5.470" E	1.000	1.000	10.95	18.77	19.89	19.89	10 October 2022	-
226.		Seureuke Village	4° 51' 31.253" N	97° 25' 6.769" E	1.000	1.000	12.41	21.27	22.49	22.49	10 October 2022	-
227.		Seureuke Village	4° 52' 20.441" N	97° 25' 39.540" E	0.860	0.000	0.00	0.00	0.40	0.47	10 October 2022	-
228.	Nur Ansari	Seureuke Village	4° 51' 16.903" N	97° 25' 36.361" E	1.000	1.000	10.95	18.77	19.89	19.89	08 October 2022	-
229.		Seureuke Village	4° 51' 18.493" N	97° 25' 38.557" E	0.564	0.564	7.74	23.53	14.18	25.14	08 October 2022	-
230.	Nur Ariyati	Seureuke Village	4° 52' 30.190" N	97° 27' 18.996" E	0.518	0.518	2.48	8.21	4.81	9.29	03 October 2022	-
231.	Nur Istiana	Seureuke Village	4° 54' 23.895" N	97° 25' 20.863" E	2.000	2.000	16.63	14.25	30.00	15.00	03 October 2022	-
232.	Nur Supardi	Seureuke Village	4° 54' 47.222" N	97° 25' 34.010" E	0.830	0.830	14.02	28.96	25.36	30.55	03 October 2022	-
233.		Seureuke Village	4° 54' 44.824" N	97° 25' 34.036" E	0.700	0.700	10.22	25.03	18.59	26.56	03 October 2022	-
234.	Nuraini	Seureuke Village	4° 53' 33.606" N	97° 27' 24.262" E	2.000	0.000	0.00	0.00	1.40	0.70	03 October 2022	-
235.	Nurdin	Seureuke Village	4° 53' 46.295" N	97° 25' 19.735" E	0.511	0.511	7.59	25.46	13.91	27.22	08 October 2022	-
236.		Seureuke Village	4° 53' 16.727" N	97° 27' 7.562" E	1.000	1.000	16.57	28.41	29.89	29.89	08 October 2022	-
237.	Nuriwayati	Seureuke Village	4° 53' 14.244" N	97° 26' 49.580" E	2.000	2.000	15.48	13.27	27.95	13.98	10 October 2022	-
238.	Nurma Sari	Seureuke Village	4° 52' 4.250" N	97° 25' 41.664" E	1.000	1.000	9.20	15.77	16.78	16.78	08 October 2022	-
239.		Seureuke Village	4° 52' 10.457" N	97° 25' 36.277" E	1.000	1.000	6.72	11.52	12.36	12.36	08 October 2022	-
240.	Nursaudah	Seureuke Village	4° 54' 0.737" N	97° 25' 51.474" E	2.000	2.000	14.78	12.67	26.71	13.36	07 October 2022	-
241.	Nurul Lismayati	Seureuke Village	4° 52' 38.674" N	97° 27' 23.172" E	0.960	0.960	10.00	17.86	18.20	18.96	10 October 2022	-
242.	Nurul Roby Irfani	Seureuke Village	4° 54' 31.082" N	97° 26' 53.042" E	2.000	0.000	0.00	0.00	1.40	0.70	10 October 2022	-
243.	Patmono	Seureuke Village	4° 53' 45.210" N	97° 26' 28.532" E	2.000	2.000	16.63	14.25	30.00	15.00	07 October 2022	-
244.	Ponaji	Seureuke Village	4° 54' 10.710" N	97° 25' 20.974" E	2.000	2.000	23.36	20.02	41.98	20.99	07 October 2022	-
245.	Ponimin	Seureuke Village	4° 53' 28.043" N	97° 26' 40.982" E	2.000	2.000	16.94	14.52	30.55	15.28	08 October 2022	-
246.		Seureuke Village	4° 53' 27.769" N	97° 25' 49.739" E	0.440	0.440	5.04	19.64	9.37	21.30	08 October 2022	-
247.		Seureuke Village	4° 53' 2.941" N	97° 25' 35.988" E	2.000	2.000	18.47	15.83	33.28	16.64	08 October 2022	-

No.	Smallholder Name	Location	Coordinate		Area (Ha)		Actual FFB (Jan-Jul 2023)	Yield	Projection FFB	Yield	Date of Joining	Date of Leaving
			Village	Latitude (N)	Longitude (E)	Total Area	Production Area	Production (MT/Year)	(MT/Ha/ Year)	Production (MT/Year)		
248.	Puji Iskandar	Seureuke Village	4° 53' 25.543" N	97° 26' 19.729" E	2.000	2.000	13.86	11.88	25.07	12.54	10 October 2022	-
249.	Puji Lestari	Seureuke Village	4° 52' 16.352" N	97° 27' 11.978" E	1.000	1.000	4.38	7.51	8.20	8.20	07 October 2022	-
250.	Raja Abdulrais	Seureuke Village	4° 52' 37.940" N	97° 25' 57.173" E	2.000	2.000	23.94	20.52	43.01	21.51	10 October 2022	-
251.	Raji	Seureuke Village	4° 54' 11.588" N	97° 25' 33.209" E	2.000	2.000	23.36	20.02	41.98	20.99	01 October 2022	-
252.	Ramadhan	Seureuke Village	4° 51' 56.175" N	97° 25' 46.577" E	1.000	1.000	15.18	26.02	27.42	27.42	01 October 2022	-
253.	Rani Fitria Dewi	Seureuke Village	4° 52' 56.350" N	97° 27' 26.198" E	1.000	1.000	12.56	21.53	22.76	22.76	07 October 2022	-
254.	Ridho Santoso	Seureuke Village	4° 52' 8.848" N	97° 25' 37.408" E	1.000	1.000	9.20	15.77	16.78	16.78	07 October 2022	-
255.	Ridwan	Seureuke Village	4° 51' 47.909" N	97° 25' 52.155" E	1.000	1.000	14.60	25.03	26.39	26.39	10 October 2022	-
256.	Riki Wahyu	Seureuke Village	4° 52' 38.101" N	97° 26' 18.007" E	2.000	2.000	18.40	15.77	33.15	16.58	07 October 2022	-
257.		Seureuke Village	4° 53' 11.359" N	97° 26' 33.234" E	2.000	2.000	8.76	7.51	15.99	8.00	07 October 2022	-
258.	Rina	Seureuke Village	4° 53' 16.360" N	97° 26' 16.816" E	2.000	2.000	12.94	11.09	23.43	11.72	01 October 2022	-
259.	Rita Astriasih	Seureuke Village	4° 53' 19.627" N	97° 26' 22.334" E	2.000	2.000	16.63	14.25	30.00	15.00	01 October 2022	-
260.	Rokim	Seureuke Village	4° 51' 30.829" N	97° 25' 4.916" E	1.000	1.000	11.53	19.77	20.92	20.92	07 October 2022	-
261.	Rokimah	Seureuke Village	4° 52' 32.131" N	97° 25' 17.613" E	1.000	1.000	17.52	30.03	31.59	31.59	07 October 2022	-
262.	Romadin	Seureuke Village	4° 53' 18.587" N	97° 26' 30.420" E	2.000	2.000	27.74	23.78	49.78	24.89	08 October 2022	-
263.		Seureuke Village	4° 54' 6.962" N	97° 25' 48.531" E	2.000	2.000	17.52	15.02	31.59	15.80	08 October 2022	-
264.		Seureuke Village	4° 53' 18.997" N	97° 26' 43.328" E	2.000	2.000	23.51	20.15	42.25	21.13	08 October 2022	-
265.		Seureuke Village	4° 53' 20.946" N	97° 26' 46.016" E	2.000	2.000	22.78	19.53	40.95	20.48	08 October 2022	-
266.		Seureuke Village	4° 53' 58.188" N	97° 25' 21.459" E	2.000	0.000	0.00	0.00	1.40	0.70	08 October 2022	-
267.		Seureuke Village	4° 54' 37.695" N	97° 25' 35.909" E	2.000	2.000	21.97	18.83	39.51	19.76	08 October 2022	-
268.	Roni Indrawan	Seureuke Village	4° 54' 45.110" N	97° 26' 19.004" E	1.000	1.000	3.65	6.26	6.90	6.90	08 October 2022	-
269.	Ruadi	Seureuke Village	4° 51' 33.098" N	97° 26' 44.573" E	2.000	2.000	17.52	15.02	31.59	15.80	08 October 2022	-
270.	Rubiyanti	Seureuke Village	4° 54' 20.279" N	97° 26' 6.708" E	2.000	2.000	8.76	7.51	15.99	8.00	04 October 2022	-
271.	Ruchi Sania	Seureuke Village	4° 54' 31.264" N	97° 26' 42.913" E	2.000	2.000	17.52	15.02	31.59	15.80	02 October 2022	-
272.	Rugito	Seureuke Village	4° 55' 3.597" N	97° 25' 32.912" E	2.000	2.000	20.73	17.77	37.30	18.65	05 October 2022	-
273.		Seureuke Village	4° 54' 41.515" N	97° 25' 30.419" E	0.542	0.542	6.72	21.25	12.36	22.80	05 October 2022	-
274.	Rujito	Seureuke Village	4° 53' 30.452" N	97° 26' 35.333" E	2.000	2.000	19.56	16.77	35.22	17.61	08 October 2022	-
275.		Seureuke Village	4° 53' 2.432" N	97° 25' 29.996" E	0.370	0.370	4.09	18.95	7.68	20.76	08 October 2022	-
276.	Rumlah	Seureuke Village	4° 53' 10.657" N	97° 25' 50.067" E	0.766	0.766	8.91	19.94	16.26	21.23	05 October 2022	-
277.		Seureuke Village	4° 53' 11.495" N	97° 25' 52.450" E	0.775	0.775	9.64	21.32	17.56	22.66	05 October 2022	-
278.	Saban	Seureuke Village	4° 54' 51.069" N	97° 26' 15.479" E	2.000	2.000	16.63	14.25	30.00	15.00	02 October 2022	-
279.	Sadiyo	Seureuke Village	4° 53' 6.626" N	97° 25' 31.851" E	0.970	0.970	10.84	19.16	19.70	20.31	08 October 2022	-
280.		Seureuke Village	4° 53' 3.422" N	97° 25' 31.477" E	0.610	0.610	9.31	26.16	16.97	27.82	08 October 2022	-
281.		Seureuke Village	4° 54' 24.976" N	97° 25' 24.663" E	2.000	0.000	0.00	0.00	1.40	0.70	08 October 2022	-
282.	Salimman	Seureuke Village	4° 53' 12.794" N	97° 26' 56.176" E	1.000	1.000	14.45	24.77	26.12	26.12	06 October 2022	-
283.	Samidi	Seureuke Village	4° 53' 54.584" N	97° 26' 13.324" E	0.988	0.988	11.61	20.14	21.07	21.33	06 October 2022	-
284.	Samidjo	Seureuke Village	4° 52' 5.148" N	97° 25' 15.530" E	1.000	1.000	10.95	18.77	19.89	19.89	08 October 2022	-
285.	Sarjono	Seureuke Village	4° 52' 52.572" N	97° 26' 25.920" E	2.000	2.000	18.40	15.77	33.15	16.58	06 October 2022	-
286.	Sarjono B	Seureuke Village	4° 52' 21.440" N	97° 25' 48.572" E	1.000	1.000	13.43	23.02	24.31	24.31	06 October 2022	-
287.	Sarman	Seureuke Village	4° 54' 37.834" N	97° 25' 49.156" E	2.000	2.000	23.21	19.89	41.71	20.86	06 October 2022	-
288.	Sarmani	Seureuke Village	4° 54' 11.475" N	97° 24' 59.924" E	2.000	0.000	0.00	0.00	1.40	0.70	06 October 2022	-
289.	Sarmin	Seureuke Village	4° 53' 24.263" N	97° 26' 16.747" E	2.000	2.000	23.36	20.02	41.98	20.99	06 October 2022	-

No.	Smallholder Name	Location	Coordinate		Area (Ha)		Actual FFB (Jan-Jul 2023)	Yield	Projection FFB	Yield	Date of Joining	Date of Leaving
			Village	Latitude (N)	Longitude (E)	Total Area	Production Area	Production (MT/Year)	(MT/Ha/ Year)	Production (MT/Year)		
290.	Sarwoto	Seureuke Village	4° 52' 9.952" N	97° 27' 17.537" E	1.000	1.000	6.72	11.52	12.36	12.36	06 October 2022	-
291.	Semangat Tarigan	Seureuke Village	4° 52' 57.001" N	97° 26' 25.919" E	2.000	0.000	0.00	0.00	1.40	0.70	06 October 2022	-
292.	Shalfisuranti	Seureuke Village	4° 54' 51.001" N	97° 25' 52.206" E	2.000	2.000	22.48	19.27	40.41	20.21	06 October 2022	-
293.		Seureuke Village	4° 54' 50.896" N	97° 25' 55.472" E	2.000	2.000	25.04	21.46	44.97	22.49	06 October 2022	-
294.	Sholikin Syaputra	Seureuke Village	4° 52' 3.581" N	97° 26' 40.719" E	1.000	1.000	14.78	25.34	26.71	26.71	06 October 2022	-
295.	Sigit Guritno	Seureuke Village	4° 52' 5.033" N	97° 26' 47.476" E	1.000	1.000	9.64	16.53	17.56	17.56	06 October 2022	-
296.	Sigit Wiyono	Seureuke Village	4° 52' 21.648" N	97° 26' 22.986" E	1.000	1.000	15.40	26.40	27.81	27.81	06 October 2022	-
297.	Siti Arofatur	Seureuke Village	4° 53' 18.682" N	97° 27' 0.794" E	0.500	0.500	7.37	25.27	13.52	27.04	09 October 2022	-
298.		Seureuke Village	4° 53' 21.405" N	97° 26' 57.209" E	1.000	1.000	11.61	19.90	21.07	21.07	09 October 2022	-
299.	Siti Hadizah	Seureuke Village	4° 54' 32.424" N	97° 26' 15.276" E	2.000	0.000	0.00	0.00	1.40	0.70	09 October 2022	-
300.		Seureuke Village	4° 53' 59.840" N	97° 26' 5.621" E	2.000	2.000	18.98	16.27	34.18	17.09	09 October 2022	-
301.	Siti Nurchasanah	Seureuke Village	4° 53' 41.152" N	97° 25' 20.606" E	2.000	0.000	0.00	0.00	1.40	0.70	09 October 2022	-
302.	Siti Suryati	Seureuke Village	4° 52' 19.774" N	97° 26' 43.777" E	0.950	0.950	11.68	21.08	21.19	22.31	06 October 2022	-
303.	Siyami	Seureuke Village	4° 52' 11.273" N	97° 26' 49.350" E	0.500	0.500	4.82	16.53	8.98	17.96	06 October 2022	-
304.	Siyo S.ag	Seureuke Village	4° 51' 54.537" N	97° 25' 20.034" E	0.810	0.810	8.32	17.61	15.21	18.78	06 October 2022	-
305.	Slamet Prawoto	Seureuke Village	4° 53' 53.240" N	97° 25' 32.342" E	0.750	0.750	10.51	24.02	19.11	25.48	09 October 2022	-
306.	Sodikin	Seureuke Village	4° 51' 14.516" N	97° 26' 37.459" E	2.000	2.000	15.48	13.27	27.95	13.98	06 October 2022	-
307.	Sri Amurni	Seureuke Village	4° 52' 17.165" N	97° 25' 44.350" E	1.000	1.000	10.84	18.58	19.70	19.70	09 October 2022	-
308.		Seureuke Village	4° 52' 17.254" N	97° 25' 47.757" E	1.000	1.000	10.34	17.73	18.81	18.81	09 October 2022	-
309.		Seureuke Village	4° 53' 32.099" N	97° 26' 27.280" E	2.000	2.000	18.98	16.27	34.18	17.09	09 October 2022	-
310.		Seureuke Village	4° 53' 6.591" N	97° 26' 26.682" E	2.000	0.000	0.00	0.00	1.40	0.70	09 October 2022	-
311.	Sri Astuti	Seureuke Village	4° 54' 26.479" N	97° 25' 53.417" E	2.000	0.000	0.00	0.00	1.40	0.70	07 October 2022	-
312.	Sri Dahniar	Seureuke Village	4° 53' 29.702" N	97° 27' 26.007" E	2.000	2.000	17.56	15.05	31.66	15.83	03 October 2022	-
313.		Seureuke Village	4° 53' 33.599" N	97° 27' 31.045" E	2.000	0.000	0.00	0.00	1.40	0.70	03 October 2022	-
314.		Seureuke Village	4° 53' 28.583" N	97° 27' 30.300" E	2.000	0.000	0.00	0.00	1.40	0.70	07 October 2022	-
315.	Sri Ismawati	Seureuke Village	4° 51' 37.709" N	97° 26' 45.761" E	2.000	2.000	17.96	15.39	32.37	16.19	04 October 2022	-
316.	Sri Kumalasari	Seureuke Village	4° 52' 52.701" N	97° 25' 58.375" E	0.680	0.680	8.61	21.71	15.73	23.13	01 October 2022	-
317.	Sri Kustini	Seureuke Village	4° 53' 25.035" N	97° 25' 47.287" E	1.000	1.000	10.22	17.52	18.59	18.59	03 October 2022	-
318.	Sri Mulyani	Seureuke Village	4° 53' 24.857" N	97° 26' 38.791" E	2.000	2.000	7.30	6.26	13.39	6.70	01 October 2022	-
319.	Sri Wahyuni	Seureuke Village	4° 51' 56.565" N	97° 25' 19.954" E	0.680	0.680	6.42	16.18	11.83	17.40	03 October 2022	-
320.	Sri Wahyuni	Seureuke Village	4° 52' 1.960" N	97° 27' 4.606" E	0.870	0.870	10.37	20.43	18.86	21.68	03 October 2022	-
321.	Subari	Seureuke Village	4° 52' 8.046" N	97° 26' 47.869" E	0.770	0.770	5.26	11.71	9.76	12.68	07 October 2022	-
322.	Sudarmin	Seureuke Village	4° 51' 30.170" N	97° 27' 1.780" E	1.000	1.000	11.97	20.52	21.71	21.71	07 October 2022	-
323.	Sudarno	Seureuke Village	4° 54' 28.211" N	97° 26' 21.993" E	2.000	2.000	24.82	21.27	44.58	22.29	04 October 2022	-
324.		Seureuke Village	4° 54' 4.394" N	97° 25' 24.233" E	0.250	0.250	3.07	21.05	5.86	23.44	04 October 2022	-
325.	Sudikan	Seureuke Village	4° 53' 24.125" N	97° 26' 27.569" E	2.000	2.000	1.46	1.25	3.00	1.50	01 October 2022	-
326.		Seureuke Village	4° 53' 1.439" N	97° 26' 17.896" E	2.000	2.000	1.46	1.25	3.00	1.50	01 October 2022	-
327.		Seureuke Village	4° 53' 7.935" N	97° 26' 6.154" E	2.000	0.000	0.00	0.00	1.40	0.70	01 October 2022	-
328.		Seureuke Village	4° 53' 22.764" N	97° 26' 13.717" E	2.000	0.000	0.00	0.00	1.40	0.70	01 October 2022	-
329.	Sugito	Seureuke Village	4° 52' 6.894" N	97° 26' 16.428" E	1.000	1.000	9.64	16.53	17.56	17.56	07 October 2022	-
330.	Sugiyo	Seureuke Village	4° 53' 55.220" N	97° 25' 51.582" E	2.000	2.000	23.36	20.02	41.98	20.99	07 October 2022	-
331.	Suharsono	Seureuke Village	4° 54' 26.775" N	97° 26' 12.448" E	2.000	2.000	22.78	19.53	40.95	20.48	07 October 2022	-

No.	Smallholder Name	Location	Coordinate		Area (Ha)		Actual FFB (Jan-Jul 2023)	Yield	Projection FFB	Yield	Date of Joining	Date of Leaving
			Village	Latitude (N)	Longitude (E)	Total Area	Production Area	Production (MT/Year)	(MT/Ha/ Year)	Production (MT/Year)		
332.	Sujoko	Seureuke Village	4° 52' 51.757" N	97° 26' 8.074" E	2.000	2.000	20.44	17.52	36.78	18.39	03 October 2022	-
333.		Seureuke Village	4° 53' 8.203" N	97° 25' 51.857" E	0.730	0.730	19.86	46.64	35.75	48.97	03 October 2022	-
334.	Sukamto	Seureuke Village	4° 52' 39.583" N	97° 27' 6.895" E	0.980	0.980	14.78	25.85	26.71	27.26	07 October 2022	-
335.	Sukana	Seureuke Village	4° 51' 54.426" N	97° 27' 14.007" E	0.680	0.680	7.52	18.96	13.79	20.28	01 October 2022	-
336.	Sukardi	Seureuke Village	4° 54' 14.488" N	97° 26' 3.017" E	0.495	0.495	6.72	23.27	12.36	24.97	01 October 2022	-
337.		Seureuke Village	4° 54' 13.224" N	97° 26' 2.060" E	0.380	0.380	4.45	20.08	8.32	21.89	01 October 2022	-
338.	Sukarti	Seureuke Village	4° 53' 57.883" N	97° 25' 57.168" E	2.000	2.000	21.90	18.77	39.38	19.69	04 October 2022	-
339.	Sukasmi	Seureuke Village	4° 52' 12.729" N	97° 25' 20.351" E	0.930	0.930	10.95	20.18	19.89	21.39	04 October 2022	-
340.		Seureuke Village	4° 52' 14.660" N	97° 25' 20.443" E	0.610	0.610	9.78	27.48	17.81	29.20	04 October 2022	-
341.	Sukemi	Seureuke Village	4° 52' 1.969" N	97° 27' 1.413" E	0.870	0.870	11.68	23.01	21.19	24.36	01 October 2022	-
342.	Sukirno	Seureuke Village	4° 52' 1.909" N	97° 26' 47.248" E	1.000	1.000	12.12	20.78	21.97	21.97	01 October 2022	-
343.	Sulikan	Seureuke Village	4° 53' 35.001" N	97° 25' 21.434" E	2.000	0.000	0.00	0.00	1.40	0.70	03 October 2022	-
344.	Sulistiani	Seureuke Village	4° 51' 40.544" N	97° 27' 3.803" E	2.000	2.000	21.90	18.77	39.38	19.69	01 October 2022	-
345.	Sulistiono	Seureuke Village	4° 53' 17.065" N	97° 26' 40.392" E	2.000	2.000	19.86	17.02	35.75	17.88	01 October 2022	-
346.	Sumanah	Seureuke Village	4° 51' 56.593" N	97° 27' 11.500" E	1.000	1.000	14.78	25.34	26.71	26.71	07 October 2022	-
347.	Sumantri	Seureuke Village	4° 53' 54.144" N	97° 26' 35.767" E	0.424	0.424	6.75	27.29	12.42	29.29	10 October 2022	-
348.	Sumhadi	Seureuke Village	4° 53' 47.047" N	97° 25' 22.687" E	0.710	0.710	10.80	26.08	19.62	27.63	03 October 2022	-
349.	Sumiyati	Seureuke Village	4° 53' 21.100" N	97° 27' 11.774" E	0.720	0.000	0.00	0.00	1.40	1.94	03 October 2022	-
350.	Sunardi	Seureuke Village	4° 53' 11.703" N	97° 26' 26.848" E	2.000	2.000	16.63	14.25	30.00	15.00	03 October 2022	-
351.		Seureuke Village	4° 53' 16.133" N	97° 26' 27.415" E	2.000	0.000	0.00	0.00	1.40	0.70	03 October 2022	-
352.	Sunardi B	Seureuke Village	4° 53' 43.334" N	97° 26' 19.305" E	1.000	1.000	10.84	18.58	19.70	19.70	03 October 2022	-
353.	Sunaryo	Seureuke Village	4° 53' 0.989" N	97° 27' 40.518" E	0.917	0.917	12.26	22.92	22.22	24.23	01 October 2022	-
354.	Supartono	Seureuke Village	4° 51' 13.877" N	97° 25' 32.625" E	0.730	0.730	13.29	31.21	24.06	32.96	01 October 2022	-
355.	Supartun	Seureuke Village	4° 55' 12.992" N	97° 25' 40.186" E	0.679	0.679	7.45	18.81	13.66	20.12	01 October 2022	-
356.	Supriadi	Seureuke Village	4° 52' 15.723" N	97° 25' 37.896" E	0.247	0.247	3.21	22.28	6.11	24.74	10 October 2022	-
357.	Suratemen	Seureuke Village	4° 52' 25.270" N	97° 27' 43.330" E	1.000	1.000	15.48	26.54	27.95	27.95	01 October 2022	-
358.	Surep	Seureuke Village	4° 52' 42.594" N	97° 26' 0.744" E	2.000	2.000	23.36	20.02	41.98	20.99	01 October 2022	-
359.	Suriyanto	Seureuke Village	4° 52' 49.644" N	97° 27' 21.854" E	1.000	1.000	16.97	29.09	30.61	30.61	07 October 2022	-
360.	Suryani	Seureuke Village	4° 54' 24.324" N	97° 25' 37.622" E	2.000	0.000	0.00	0.00	1.40	0.70	07 October 2022	-
361.		Seureuke Village	4° 54' 24.629" N	97° 26' 40.221" E	2.000	2.000	17.56	15.05	31.66	15.83	10 October 2022	-
362.	Sutaji	Seureuke Village	4° 51' 34.309" N	97° 25' 17.287" E	0.750	0.750	9.93	22.70	18.08	24.11	03 October 2022	-
363.	Sutanto	Seureuke Village	4° 52' 42.429" N	97° 26' 14.543" E	2.000	2.000	18.62	15.96	33.54	16.77	07 October 2022	-
364.	Sutarmi	Seureuke Village	4° 54' 15.190" N	97° 26' 8.591" E	2.000	2.000	24.82	21.27	44.58	22.29	10 October 2022	-
365.	Sutarmin	Seureuke Village	4° 52' 32.550" N	97° 25' 40.778" E	0.730	0.730	11.75	27.59	21.32	29.21	10 October 2022	-
366.	Sutarwan	Seureuke Village	4° 51' 37.578" N	97° 26' 1.887" E	2.000	0.000	0.00	0.00	1.40	0.70	03 October 2022	-
367.	Sutrisno	Seureuke Village	4° 54' 18.294" N	97° 25' 21.127" E	2.000	2.000	15.71	13.47	28.36	14.18	03 October 2022	-
368.	Suwarno	Seureuke Village	4° 53' 20.911" N	97° 25' 51.911" E	0.954	0.954	13.29	23.88	24.06	25.22	07 October 2022	-
369.		Seureuke Village	4° 53' 20.940" N	97° 25' 49.331" E	0.892	0.892	12.56	24.14	22.76	25.52	07 October 2022	-
370.	Suyadiyono	Seureuke Village	4° 55' 19.579" N	97° 26' 30.161" E	0.910	0.910	12.56	23.66	22.76	25.01	10 October 2022	-
371.	Suyanto	Seureuke Village	4° 52' 28.009" N	97° 25' 39.730" E	0.960	0.960	12.19	21.77	22.10	23.02	03 October 2022	-
372.	Suyono	Seureuke Village	4° 52' 5.815" N	97° 25' 13.132" E	0.430	0.430	5.00	19.93	9.30	21.63	10 October 2022	-
373.	Sya'bani	Seureuke Village	4° 51' 40.007" N	97° 26' 33.289" E	0.400	0.400	6.86	29.40	12.61	31.53	07 October 2022	-

No.	Smallholder Name	Location	Coordinate		Area (Ha)		Actual FFB (Jan-Jul 2023)	Yield	Projection FFB	Yield	Date of Joining	Date of Leaving
			Village	Latitude (N)	Longitude (E)	Total Area	Production Area	Production (MT/Year)	(MT/Ha/ Year)	Production (MT/Year)		
374.	Syafii	Seureuke Village	4° 52' 43.213" N	97° 28' 1.067" E	0.880	0.880	14.78	28.79	26.71	30.35	10 October 2022	-
375.	Taat	Seureuke Village	4° 52' 10.676" N	97° 27' 30.054" E	1.000	1.000	11.10	19.03	20.16	20.16	03 October 2022	-
376.	Tardi	Seureuke Village	4° 54' 20.749" N	97° 25' 53.428" E	2.000	2.000	8.76	7.51	15.99	8.00	07 October 2022	-
377.		Seureuke Village	4° 53' 29.718" N	97° 26' 14.182" E	2.000	2.000	20.59	17.65	37.05	18.53	07 October 2022	-
378.		Seureuke Village	4° 53' 10.687" N	97° 26' 44.973" E	2.000	2.000	19.86	17.02	35.75	17.88	07 October 2022	-
379.		Seureuke Village	4° 53' 12.516" N	97° 26' 41.359" E	2.000	2.000	22.78	19.53	40.95	20.48	07 October 2022	-
380.	Thomas Riyo	Seureuke Village	4° 52' 51.053" N	97° 27' 52.242" E	0.870	0.870	11.53	22.72	20.92	24.05	10 October 2022	-
381.	Tugimin	Seureuke Village	4° 51' 57.783" N	97° 27' 7.049" E	1.000	1.000	14.78	25.34	26.71	26.71	10 October 2022	-
382.	Tugiyu	Seureuke Village	4° 53' 5.320" N	97° 26' 0.992" E	2.000	0.000	0.00	0.00	1.40	0.70	10 October 2022	-
383.	Tukini	Seureuke Village	4° 51' 54.435" N	97° 26' 51.012" E	1.000	1.000	12.59	21.58	22.81	22.81	03 October 2022	-
384.		Seureuke Village	4° 51' 21.187" N	97° 25' 31.948" E	1.000	1.000	11.86	20.33	21.51	21.51	03 October 2022	-
385.	Tumini	Seureuke Village	4° 54' 4.279" N	97° 26' 13.074" E	2.000	2.000	17.52	15.02	31.59	15.80	10 October 2022	-
386.	Udi	Seureuke Village	4° 52' 53.005" N	97° 28' 0.856" E	1.000	1.000	13.43	23.02	24.31	24.31	03 October 2022	-
387.	Udin	Seureuke Village	4° 52' 24.107" N	97° 27' 25.241" E	0.950	0.950	13.43	24.23	24.31	25.59	10 October 2022	-
388.	Urip Neng Ati	Seureuke Village	4° 51' 53.697" N	97° 27' 16.253" E	0.810	0.810	12.59	26.65	22.81	28.16	03 October 2022	-
389.	Usadi	Seureuke Village	4° 51' 51.738" N	97° 25' 15.753" E	1.000	1.000	14.45	24.77	26.12	26.12	07 October 2022	-
390.	Ustriani	Seureuke Village	4° 53' 4.382" N	97° 26' 24.194" E	2.000	2.000	29.20	25.03	52.38	26.19	10 October 2022	-
391.	Wahono	Seureuke Village	4° 51' 41.493" N	97° 26' 40.650" E	2.000	2.000	26.28	22.53	47.18	23.59	03 October 2022	-
392.	Wahyu Trijoko	Seureuke Village	4° 51' 47.644" N	97° 25' 20.698" E	0.560	0.560	7.45	22.81	13.66	24.39	10 October 2022	-
393.	Wakidi Ahmad	Seureuke Village	4° 54' 17.649" N	97° 25' 34.148" E	2.000	0.000	0.00	0.00	1.40	0.70	03 October 2022	-
394.	Fauzan	Seureuke Village	4° 53' 38.477" N	97° 25' 33.665" E	2.000	0.000	0.00	0.00	1.40	0.70	03 October 2022	-
395.	Waldianto	Seureuke Village	4° 52' 14.252" N	97° 27' 10.297" E	0.240	0.240	4.82	34.43	8.98	37.42	10 October 2022	-
396.	Warino	Seureuke Village	4° 52' 52.941" N	97° 26' 16.650" E	2.000	2.000	23.36	20.02	41.98	20.99	03 October 2022	-
397.	Warmi	Seureuke Village	4° 54' 7.573" N	97° 25' 51.575" E	2.000	2.000	23.36	20.02	41.98	20.99	03 October 2022	-
398.	Warmin	Seureuke Village	4° 54' 31.481" N	97° 25' 47.525" E	2.000	2.000	17.56	15.05	31.66	15.83	03 October 2022	-
399.	Warsidi	Seureuke Village	4° 51' 48.999" N	97° 24' 51.112" E	1.190	1.190	13.51	19.46	24.45	20.55	03 October 2022	-
400.	Wastono	Seureuke Village	4° 52' 2.335" N	97° 27' 22.803" E	0.900	0.000	0.00	0.00	1.40	1.56	10 October 2022	-
401.	Wati	Seureuke Village	4° 53' 17.966" N	97° 26' 19.324" E	2.000	2.000	24.61	21.09	44.21	22.11	03 October 2022	-
402.	Yusri	Seureuke Village	4° 52' 19.318" N	97° 27' 45.615" E	0.904	0.904	11.13	21.11	20.41	22.58	10 October 2022	-
					568.655	428.200	4664.28	18.67	8535.00	19.93		

\*a value of 0.00 on FFB production because the plants are still immature (TBM)

\*\* Data FFB period from January - July 2023, its due to the association January 2023

\*\*\*Yield calculated based on formul : production from January – July 2023 : 07 x 12