

**Roundtable on Sustainable Palm Oil Certification  
R S P O****[ ✓ ] Surveillance**

Name of Management Organisation : **Kelompok Tani Karya Bersama**  
Plantation Name : **Kelompok Tani Karya Bersama**  
Location : Village of Agung Mulya, Sub District of Antang Kalang, District of Kotawaringin Timur, Province of Kalimantan Tengah, Indonesia  
Certificate Code : **MUTU-RSPO/157**  
Date of Certificate Issue : 03 September 2021    Date of License Issue : 03 November 2023  
Date of Certificate Expiry : 02 September 2026    Date of License Expiry : 02 September 2024

Assessment	Assessment Date	PT. Mutuagung Lestari Auditor	Reviewed by	Approved by
ASA-2	31 July to 3 August 2023	Moh Arif Yusni (Lead Auditor Witnessing), Afiffuddin (Lead Auditor Witnessed), Benli Manurung	Octo HPN Nainggolan	Leonada

Assessment	Approved by MUTUAGUNG LESTARI on:
ASA-2	08 September 2023

**TABLE OF CONTENT**
**FIGURE**

Figure 1. Location Map of Kelompok Tani Karya Bersama	1
Figure 2. Operational Map of Kelompok Tani Karya Bersama	2
Abbreviations Used	3

**1.0 SCOPE of the CERTIFICATION ASSESSMENT**

1.1 Assessment Standard Used	4
1.2 Organisation Information	4
1.3 Type of Assessment	4
1.4 Location of Plantations	4
1.5 Description of Area Statement	4
1.6 Planting Year and Cycles	5
1.7 Description of Supply Base	5
1.8 Tonnage Product	5
1.9 Other Certification	6

**2.0 ASSESSMENT PROCESS**

2.1 Assessment Team	7
2.2 Assessment Methodology, Assessment Process and Locations of Assessment	7
2.3 Stakeholder Consultation and Stakeholders Contacted	7
2.4 Determining Next Assessment	9

**3.0 ASSESSMENT FINDINGS**

3.1 Summary of Assessment Report of the RSPO Certification	10
3.2 Conformity Checklist of Certificate and Logo Use	34
3.3 Identification of Findings, Corrective Actions, Observations, Opportunity for Improvement and Noteworthy Positive Components	35
3.4 Summary of Arising Issues from Public and Auditor Verification	41

**4.0 CERTIFIED ORGANISATION'S ACKNOWLEDGEMENT OF INTERNAL RESPONSIBILITY**

4.1 Formal Signing of Assessment Findings	43
---	----

**APPENDICES**

1. List of Stakeholders Contacted in the RSPO Certification Process	43
2. Assessment Program	44
3. Smallholders Data	45

Figure 1. Location Map of Kelompok Tani Karya Bersama

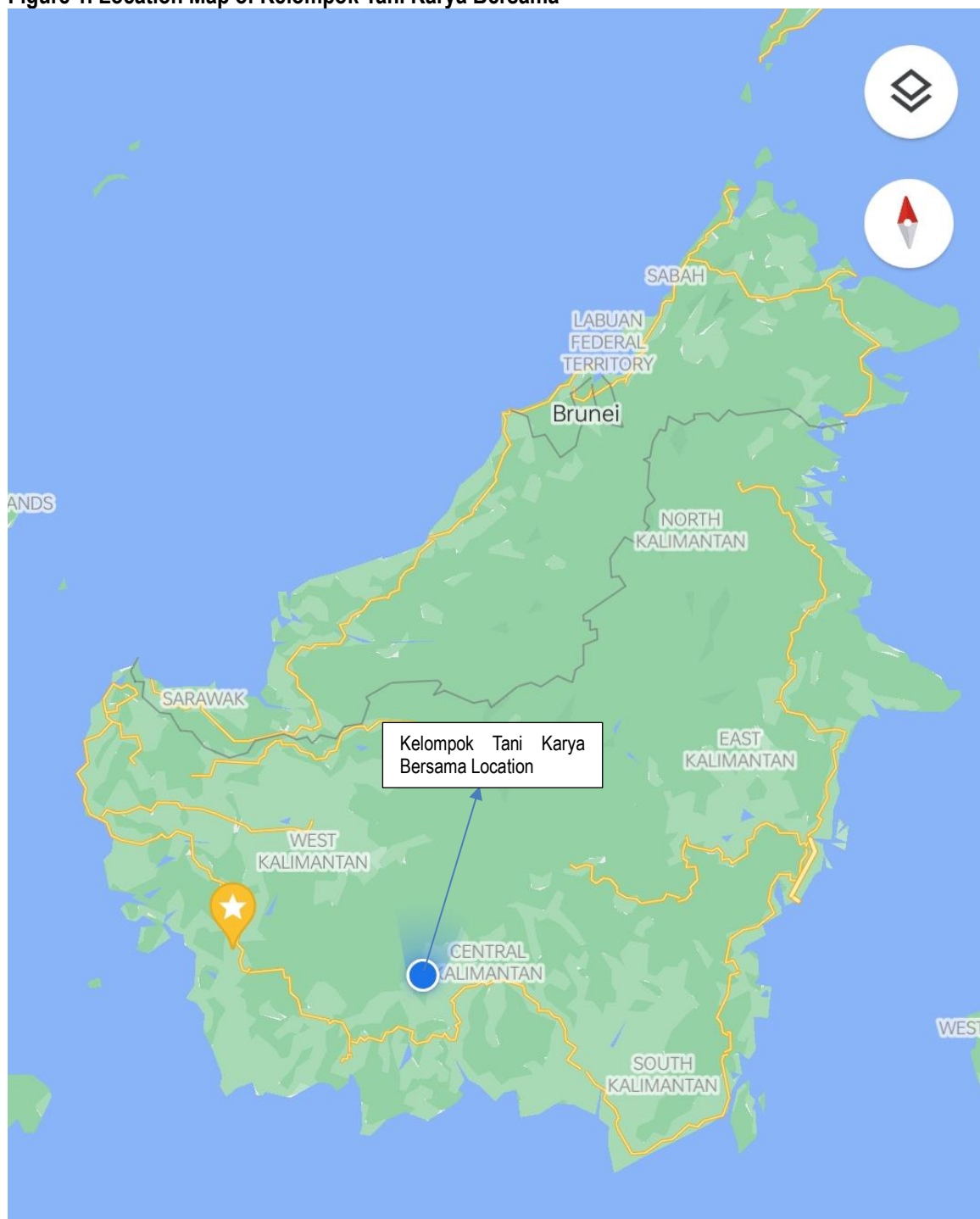
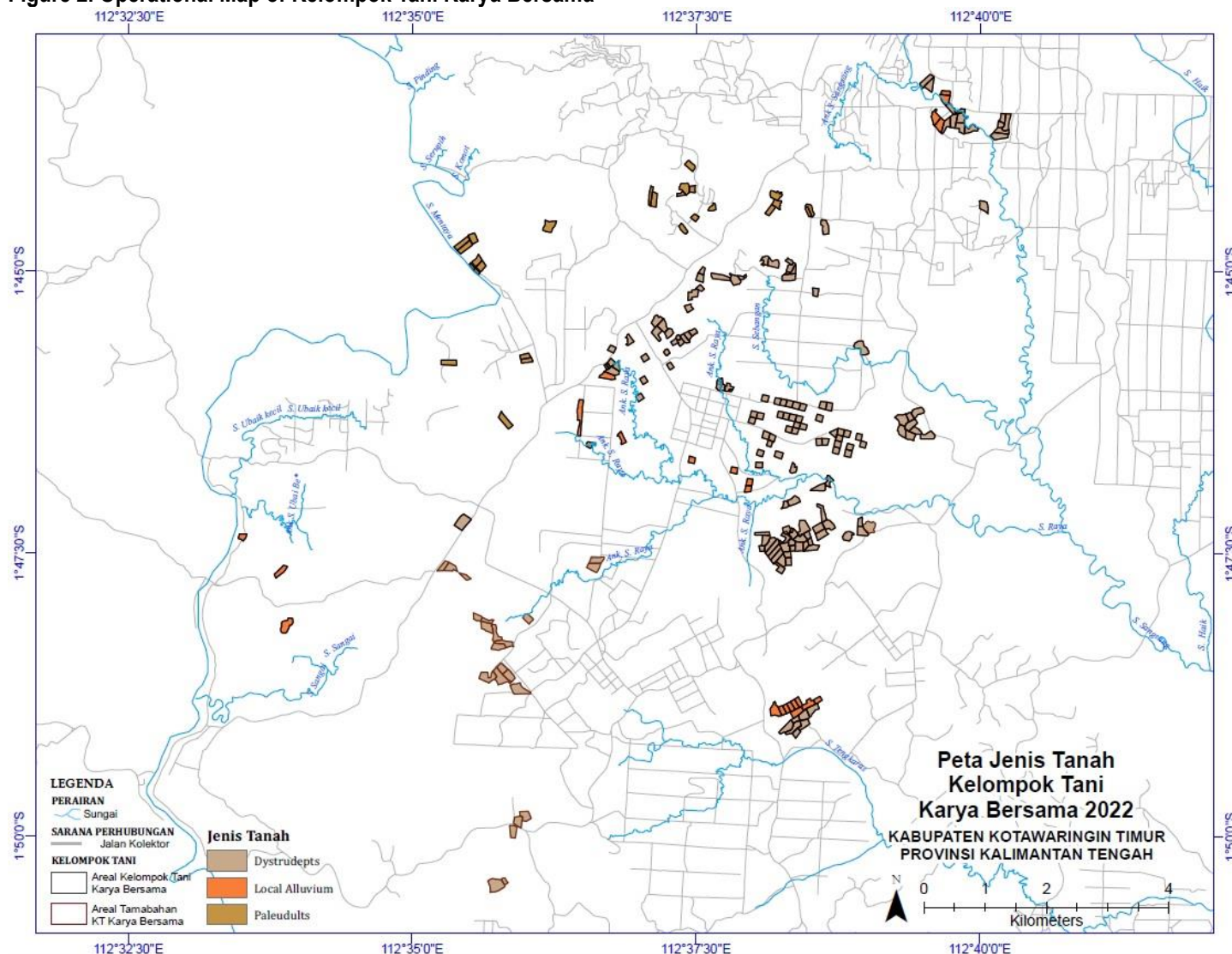


Figure 2. Operational Map of Kelompok Tani Karya Bersama



**Abbreviations Used**

APL	:	<i>Area Penggunaan Lain</i> (Non-Forested Area)
BGA	:	Bumitama Gunajaya Agro
BMP	:	Best Management Practices
CPO	:	Crude Palm Oil
CSPK	:	Certified Sustainable Palm Kernel
CSPKE	:	Certified Sustainable Palm Kernel Expeller
CSPKO	:	Certified Sustainable Palm Kernel Oil
CSPO	:	Certified Sustainable Palm Oil
FCL	:	Final Compensation Liability
FFB	:	Fresh Fruit Bunch
FPIC	:	Free, Prior and Informed Consent
GAP	:	Good Agriculture Practice
HCS	:	High Carbon Stock
HCV	:	High Conservation Value
HPK	:	Hutan Produksi Konversi (Conversion Forest Area)
ICS	:	Internal Control System
ID	:	Identity
IPM	:	Integrated Pest Management
ISH	:	Independent Smallholder
ISO	:	International Standard Organization
ISPO	:	<i>Indonesian Sustainable Palm Oil</i>
KB	:	Karya Bersama
KMB	:	Karya Makmur Bahagia
KTKB	:	Kelompok Tani Karya Bersama
LUCA	:	Land Use Change Analysis
OHS	:	Occupational Health and Safety
RSPO	:	Roundtable Sustainable Palm Oil
RTE	:	Rare, Threaten, and Endangered
SHM	:	<i>Sertifikat Hak Milik</i> (Land Owner Certificate)
SKT	:	<i>Surat Keterangan Tanah</i> (Land Certificate)
SOP	:	Standard Operational Procedure

<b>1.0</b>	<b>SCOPE of the CERTIFICATION ASSESSMENT</b>			
<b>1.1</b>	<b>Assessment Standard Used</b>		<ul style="list-style-type: none"> <li>• RSPO Certification Systems for Principles &amp; Criteria and RSPO Independent Smallholder Standard Endorsed by the RSPO Board of Governors on 12 November 2020</li> <li>• RSPO Independent Smallholder Standard, Indonesia National Interpretation for the Production of Sustainable Palm Oil 2020, endorsed by the RSPO Boar of Governors on 14 February 2022</li> </ul>	
<b>1.2</b>	<b>Organisation Information</b>			
1.2.1	Organisation name listed in the certificate		Kelompok Tani Karya Bersama	
1.2.2	Contact person		Yoyok Kuswoyo	
1.2.3	Organisation address and site address		Jalan Rambutan RT07/RW04, Agung Mulya Village, Antang Kalang Sub District, Kotawaringin Timur District, Kalimantan Tengah Province, Indonesia	
1.2.4	Telephone		+6285245638888	
1.2.5	Fax		-	
1.2.6	E-mail		yoyokkuswoyo7878@gmail.com	
1.2.7	Web page address			
1.2.8	Management Representative who completed the application for certification		Yoyok Kuswoyo	
1.2.9	Registered as RSPO member		1-0306-20-000-00 – 31 October 2020	
<b>1.3</b>	<b>Type of Assessment</b>			
1.3.1	Scope of Assessment and Number of Management Unit		Kelompok Tani Karya Bersama with 72 members (304.82 ha)	
1.3.2	Type of certificate		Single	
<b>1.4</b>	<b>Locations of Plantation</b>			
1.4.1	Location of Certification Scope of Supply Base			
	<b>Name of Smallholder Organisation</b>	<b>Location</b>	<b>Coordinate</b>	
			<b>Latitude</b>	<b>Longitude</b>
	Kelompok Tani Karya Bersama	Agung Mulya Village, Telaga Antang Sub District, Kotawaringin Timur District, Kalimantan Tengah Province, Indonesia	S 01° 46' 25.687"	E 112° 37' 33.318"
<b>1.5</b>	<b>Description of Area Statement</b>			
1.5.1	Tenure			
	• State		- Ha	
	• Community		304.82 Ha	
1.5.2	<b>Area Statement</b>			
	• Total area		304.82 Ha	
	• Mature area		304.82 Ha	
<b>1.6</b>	<b>Planting Year and Cycles</b>			

1.6.1	Age profile of planting year				
	Planting Year	Hectarage (Ha)			
		Kelompok Tani Karya Bersama			Total
	2004	6.00			6.00
	2007	1.00			1.00
	2008	33.68			33.68
	2010	159.32			159.32
	2012	0			0
	2013	17.77			17.77
	2014	0			0
	2015	49.94			49.94
	2017	27.77			27.77
	2018	9.34			9.34
	TOTAL	304.82			304.82
1.6.2	New Planting area after January 2010	- Ha			
1.6.3	Planting Cycle	1 <sup>st</sup> Cycle			
1.7	Description of Supply Base				
1.7.1	Description of Certification Scope of Supply Base				
	Name of Smallholder Organisation	Total Area (Ha)	Production Area (Ha)	FFB (tonnes/year)	Yield (tonnes/ha/year)
	Kelompok Tani Karya Bersama (72 Members)	304.82	304.82	6,447.13	21.16
	Productions data period of July 2022 – June 2023				
1.8	Tonnage of Product				
1.8.1	Past Annual Claim Certified Product		Last Year Projected Certified Volume (MT)	Last Year Actual Certified Volume (July 2022 – June 2023) (MT)	
	• FFB Production		7,303.44	6,447.13	
	• CSPO Production		-	1.339,09	
	• CSPKE Production		-	184,13	
	• CSPKO Production		-	150,65	
1.8.2	Product selling				
	Tonnage of selling product		Actual selling product for last year (July 2022 – June 2023) (MT)		
	• IS-CSPO sold as RSPO Credit		-		
	• IS-CSPKO sold as RSPO Credit		160		
	• IS-CSPKE sold as RSPO Credit		-		
	• FFB sold as RSPO Certified Product		-		
	• FFB sold under other scheme		-		
	• FFB sold as conventional		-		
1.8.3	Estimate Certified FFB Claim				
	Name of Smallholder Organisation	Total Area (Ha)	Production Area (Ha)	FFB (tonnes/year)	Yield (tonnes/ha/year)
	Kelompok Tani Karya Bersama (72 Members)	304.82	304.82	6,770.00	22.21
	*Projected FFB production for 12 months of certificate				
1.8.4	Estimate Certified Palm Product Claim				



	FFB Processed (tonnes/year)	CPO		CSPKE		CSPKO	
		Out put (tonnes)	Extraction (%)	Out put (tonnes)	Extraction (%)	Out put (tonnes)	Extraction (%)
	-	-	-	-	-	-	-
	*Extraction of CSPO, CSPKO and CSPKE from document “A seller Guide to RSPO Credits						
1.9	Other Certifications						
	Others			-			



<b>2.0</b>	<b>ASSESSMENT PROCESS</b>
<b>2.1</b>	<b>Assessment Team</b>
<b>ASA-2</b>	<p>1. <b>Moh Arif Yusni (Lead Auditor Witnessing).</b> Indonesian citizen. Bachelor of Agriculture, majoring in Plant Protection. Has experience as an operational staff at a private oil palm plantation company in Indonesia on 2010 to 2012. Has attended several trainings, i.e.: ISO 19011, ISO 9001; ISO 14001, SA 8000, RSPO lead auditor course in 204, ISPO lead auditor, OHS expert, OHS auditor based on National Government No. 50/2012, SCCS, RSPO and ISPO Lead auditor refresher course in 2021 etc. Has conducting ISPO, RSPO and MSPO audit as an auditor and lead auditor with expertise on best management practices for estate and mill, legality, worker welfare, safety, social, environment, conservation, transparency, long term economic management plan and supply chain for palm oil mill aspects. In this audit activity, the person concerned witnessing the lead auditor.</p> <p>2. <b>Affiffuddin (Lead Auditor Witnessed).</b> Indonesian citizen, Diploma III majoring Palm Oil Plantation, Bogor Agricultural University. Five years working experience since 2010 at Oil Palm Plantation Company in Indonesia as agronomy operational staff and followed several trainings namely: Basic Plantation Management Program, Lead Auditor ISPO in 2016, RSPO P&amp;C Lead Auditor Course in 2018, RSPO Supply Chain Certification Lead Auditor Course in 2021, OHS General Expert, OHS System Management based on PP 50 2012 and Management System Certification (ISO 9001-2015/SNI 19011-9001:2015) ISO 17021, ISO 17065, SA 8000 training. During this audit, he verified ICS, SCC, Legal, BMP and OHS aspects.</p> <p>3. <b>Benli Manurung (Auditor).</b> Bachelor of Agriculture Majoring in Soil Science. He has more than 4 years of experience as a plantation operations staff in a private oil palm plantation company in Indonesia. The trainings he has attended include: ISPO, RSPO, Lead auditor of ISO 9001: 2015; ISO 14001; 2015, IHT Health &amp; Safety Aspect and Best Management Practice. Has participated in several audit activities since 2016 in the field of Best Management Practice, Health &amp; Safety Aspect and Worker Welfare. In this audit activity performs the assessment of best management practices and environmental aspect.</p> <p>Curriculum vitae (CV) of the members and the assessment team is available at the PT Mutuagung Lestari office.</p>
<b>2.2</b>	<b>Assessment Methodology, Assessment Process and Locations of Assessment</b>
<b>2.2.1</b>	<b>Figure of person days to implement assessment</b>
<b>ASA-2</b>	<p>Number of auditors : 2 auditors and 1 Auditor Witnessing</p> <p>Number of days for <b>ASA-2</b> at site : 4 days</p> <p>Number of working days for <b>ASA-2</b> at site : 8 Working days</p>
<b>2.2.2</b>	<b>Assessment Process</b>
<b>ASA-2</b>	<p>The onsite assessment was conducted on 31 July – 3 August 2023, the assessment program is included in appendix 2. This assessment conducted for scope of certification covering 304.82 ha, 72 members and 212 land Plots. During this assessment there is a reductions of scope of certifications where in previous assessment the numbers of smallholders are 76 smallholders with the total area 323.78 ha.</p> <p>The approach to the audit was to treat the independent smallholders as an RSPO Certification Unit. The assessment was conducted in three methods:</p> <ol style="list-style-type: none"> <li>1. Document review, aiming to observe the sufficiency of types or substances from required documents.</li> <li>2. interview, aiming to obtain more detailed information and cross check the information;</li> <li>3. field observation, aiming to observe directly the sufficiency of implementation on site.</li> </ol> <p>Team of auditor started their trip from Jakarta to Palangkaraya and continued to site on 31 July 2023. Opening Meeting in the Meeting Room of Kelompok Tani Karya Bersama. Opening meeting was attended by head of association, farmer members and other related personnel.</p> <p>Stakeholder consultation involved internal and external stakeholders. Stakeholders included those immediately linked with the operation of the certification units such employees, the local government, NGOs, and local communities. Meetings were held with stakeholders to seek their views on the performance of the certification unit with respect to the RSPO requirements and aspects where they considered that improvements could be made. At</p>

	<p>the start of each meeting, the interviewer explained the purpose of the audit followed by an evaluation of the relationship between the stakeholder and the company before discussions proceeded. The interviewer recorded comments made by stakeholders and these have been incorporated into the assessment findings. The comments made by external stakeholders were also taken into account in the assessment</p> <p>Commonly, the audit activities went smoothly with good support from the unit management. The presentation of documents is presented quite well by involving related personnel. Closing Meeting conducted the Meeting Room of Kelompok Tani Karya Bersama, its attended by head of association, farmers members and other related personnel and they accepted the result and recommendation by auditors.</p> <p>Some opportunities for improvement of the results ASA-2 delivered by the MUTU auditor to the management unit and the results are the subject will be verified at the next assessment phase (ASA-3).</p> <p>Improvement of finding from this assessment is observed by auditor. All information obtained was recorded in Check List of PT Mutuagung Lestari (MUTU) and part of this report</p> <p>The assessment program please find Appendix 2.</p>
<b>2.2.3</b>	<b>Locations of Assessment</b>
<b>ASA-2</b>	<p>Assessment was conducted with scope of certification 304.82 ha, 72 members and 212 land Plots. The location of assessment were 1 village. During this assessment the association considered low risk its due to there is considerable heterogeneity in the Group (e.g. members are geographically or jurisdictionally separated from one another, a range of terrains, varying levels of experience of oil palm cultivation among members, diverse sizes of plantations, a range of socioeconomic situations among members, etc.) and additional new members. Sampling method for ASA-2: <math>\sqrt{72} \times (1.2)</math>: 11 members.</p> <p>The sampling location consider the issue arose from the review documents, village distribution and stakeholder's consultation that are fundamental and crucial. The smallholders and locations visited by auditor among other:</p> <p><b>Existing Member</b></p> <ul style="list-style-type: none"> <li>• 104_KB on behalf Amri Mustaqim. Observation and interview related to KTKB commitment, BMP aspect, FPIC, land title, OHS and boundary pole.</li> <li>• 06_SM on behalf Elda Erdayani. Observation and interview related to KTKB commitment, BMP aspect, FPIC, land title, OHS and boundary pole.</li> <li>• 136_KB on behalf Sugito. Observation and interview related to KTKB commitment, BMP aspect, FPIC, land title, OHS and boundary pole.</li> <li>• 05_SM on behalf Sumarmun. Observation and interview related to KTKB commitment, BMP aspect, FPIC, land title, OHS and boundary pole.</li> <li>• 12_SM on behalf Gimani. Observation and interview related to KTKB commitment, BMP aspect, FPIC, land title, OHS and boundary pole.</li> <li>• 163_KB on behalf Katini. Observation and interview related to KTKB commitment, BMP aspect, FPIC, land title, OHS and boundary pole.</li> <li>• 99_KB on behalf Joko Siswanto. Observation and interview related to KTKB commitment, BMP aspect, FPIC, land title, OHS and boundary pole.</li> <li>• 113_KB on behalf Denny Febriyadi. Observation and interview related to KTKB commitment, BMP aspect, FPIC, land title, OHS and boundary pole.</li> <li>• 88_KB on behalf Jumadi. Observation and interview related to KTKB commitment, BMP aspect, FPIC, land title, OHS and boundary pole.</li> <li>• 19_NM on behalf Dasimin. Observation and interview related to KTKB commitment, BMP aspect, FPIC, land title, OHS and boundary pole.</li> <li>• 82_KB on behalf Estu Wulan Ningsih. Observation and interview related to KTKB commitment, BMP aspect,</li> </ul>

	<p>FPIC, land title, OHS and boundary pole.</p> <ul style="list-style-type: none"> <li>• HCV 4.1 in 82_KB on behalf Estu Wulan Ningsih. Observations related to the management of HCV areas and stake boundaries.</li> <li>• Hazardous Waste Temporary Storage and Chemical warehouse. Observations and interviews with officers related to material handling, work procedures, OHS, and environmental management.</li> <li>• Fertilizer warehouse. Observation of material handling, OHS, and handling of hazardous materials.</li> </ul>
<b>2.3</b>	<b>Stakeholder Consultation and Stakeholders Contacted</b>
<b>2.3.1</b>	<b>Summary of stakeholder consultation process.</b>
<b>ASA-2</b>	<p>Consultation of stakeholders for Koperasi Kelompok Tani Karya Bersama was held by:</p> <ul style="list-style-type: none"> <li>• Public Notification on MUTU website on 17 July 2023</li> <li>• Public consultation meeting with government institution 1 August 2023</li> <li>• Public consultation meeting with village representatives on 01 August 2023</li> <li>• Consultation with NGO (WWF, Sawit Watch, AMAN &amp; Walhi) via email on 27 July 2023</li> </ul> <p>Numbers of input from stakeholders were clarified by Kelompok Tani Karya Bersama as a part of this report.</p>
<b>2.3.2</b>	<b>Stakeholder contacted</b>
	Please find appendix 1
<b>2.4</b>	<b>Determining Next Assessment</b>
	The next visit ( <b>ASA-3</b> ) will be conducted eight (8) months to twelve (12) months after date of annual license.

### 3.0 ASSESSMENT FINDINGS

#### 3.1 Summary of Assessment Report of the RSPO Certification

MUTUAGUNG LESTARI has conducted an assessment of **Kelompok Tani Karya Bersama** operation consisting of **seventy-two (72)** smallholders.

During the assessment, there were nil (0) Nonconformities were assigned against Major Compliance and three (3) opportunities for improvement were identified.

MUTUAGUNG LESTARI found that **Kelompok Tani Karya Bersama** complied with the requirements of **RSPO Independent Smallholder Standard, Indonesia National Interpretation for the Production of Sustainable Palm Oil 2020**, endorsed by the RSPO Board of Governors on 14 February 2022 and **RSPO Certification Systems for Principles & Criteria and RSPO Independent Smallholder Standard Endorsed by the RSPO Board of Governors on 12 November 2020**.

Therefore MUTUAGUNG LESTARI Recommends RSPO Certification of compliance is Continued.

#### 3.1.1 The system requirements for Group Formation and Management (including the Internal Control System) that are only applicable to the group manager

Ref Std.	VERIFICATION RESULT of MUTU-Certification	
<b>A – ICS: Group Entity and Group Management Requirements</b>		
<b>A.1 The Group demonstrates that they are legally formed</b>		
<p><b>A.1.1 Eligibility</b>  The Kelompok Tani Karya Bersama has appointed a group manager based on the Decree of the Working Group Members of the Kelompok Tani Karya Bersama Meeting, number 010/09/KB/2018, September 5 2018. The matters that became the decision included appointing Yoyok Kuswoyo as Group Manager of the Kelompok Tani Karya Bersama Certification. The decree also details the duties and responsibilities carried out as Group Manager of the Kelompok Tani Karya Bersama Certification.</p> <p><b>MS A</b>  Same as Eligibility</p> <p><b>MS B</b>  Same as Eligibility</p> <p><b>A.1.2 Eligibility</b>  The group manager has proof of legal identity of the Kelompok Tani Karya Bersama, including in the form of Deed Number 2, dated March 10, 2018, issued by Notary Joni, SH, MH, Sp.N. As for article 21 of the Deed, it is stated that the Governing Body appointed on behalf of Suharno as Chairman, Sukari as Secretary and Sutrisno as Treasurer.</p> <p>In addition, the Decree of the Head of Agung Mulya Village was also shown, number 520-55/SK-AM/X/2013, dated 3 October 2013, which among other things stated that he decided to stipulate a Decree of the Head of Agung Mulya Village, Telaga Antang District, Kotawaringin Timur Regency regarding the Establishment of Formation of Kelompok Tani Karya Bersama.</p> <p><b>MS A</b>  Same as Eligibility</p>		

**MS B**

Same as Eligibility

**A.1.3**
**Eligibility**

The group has membership requirements which are listed in the Kelompok Tani Karya Bersama Regulations, dated 29 September 2013, which among other things states in article 3 that members of farmer groups must meet at least the following requirements:

- Indonesian citizen who is not against the law
- Residing in Agung Mulya Village
- Having the same interests as a farmer
- Have agricultural land with permanent legal force and/or clear legality, but members who do not own land/field will be directed to Livestock and/or fisheries
- Able to implement and comply with the provisions set by farmer groups
- Able to pay off principal savings and obligatory savings, the amount of which is determined in a group meeting

The Farmer Group has a policy related to the requirements to become a member in the recruitment procedure with number Karya Bersama-SOP-ORG-004 dated 20 December 2019. The document describes the requirements for become a member, including:

- New member shall complete the registration form (name, address, ID Card number, Coordinate, Area, Year of Planted, soil type, oil palm seed, manuring record, pest control, productivity, harvesting rotation, land sale history, land title history, land legality history).
- The group manager with the ICS team and field instructor (from BGA) conducted a land survey to the prospective new members, to ensure the data are suitable with the field conditions.
- The oil palm plantation is in the other land area status.
- New member shall commit not to new development on the peat area after year of 2017.
- New members strive to comply with the rules, procedures and policy of KTKB and also RSPO principle and Criteria.

**MS A**

Same as Eligibility

**MS B**

Same as Eligibility

**A.1.4**
**Eligibility**

All members have signed and accepted the membership requirements stated in the Statement of Joining the Karya Bersama Farmer Group and the Statement of Group Members, including the following:

1. Statement of Joining the Karya Bersama Farmers Group, number 26/1/KB/2018, on behalf of Joko Siswanto, dated January 8, 2018 and Statement of Group Members, signed June 11, 2020.
2. Statement of Joining the Karya Bersama Farmers Group, number 26/1/KB/2018, on behalf of Dinniy Febriyadi, dated January 8 2018 and Statement of Group Members, signed June 11 2020.
3. Statement of Joining the Karya Bersama Farmers Group, number 37/1/KB/2018, on behalf of Estu Wulan Ningsih, dated January 7 2018 and Statement of Group Members, signed June 11 2020.
4. Declaration of Joining the Karya Bersama Farmer Group, number 11/1/KB/2018, on behalf of Jumadi, dated January 7 2018 and Statement of Group Members, signed June 11 2020.
5. Declaration of Joining the Ngudi Makmur Farmer Group, number 12/1/NM/2018, on behalf of Dasimin, dated January 4 2018 and Statement of Group Members, signed June 18 2020.

The statements contained in the statement letters include:

- Declare that they are willing to join the Karya Bersama Farmers Group, participate in supporting and being involved in group membership. As a member, they are willing to follow all the rules, procedures and policies set by the group, to be involved in building documentation and improvement in cultivation, the environment and society.
- Will provide information to the group manager including all information regarding land ownership, land disputes (if any), land ownership status and land use
- Will be committed to ensuring that there is no forced labor practice, paying the minimum wage in accordance with applicable

regulations and trying to minimize the use of paraquats, until they don't use them anymore, protect conservation areas and others.

#### **MS A**

Based on the results of a review of documents related to membership statements, for example on the 11 samples determined, it is known that each member has signed the required document.

Based on the results of interviews with sample farmers who have been determined in the field, it is known that members have been able to prove their understanding of the membership requirements.

<b>Status: Comply</b>
-----------------------

### **A.2 The Group Manager is responsible for managing the Group for certification**

#### **A.2.1**

##### **Eligibility**

The group manager shows the Kelompok Tani Karya Bersama Management Work Plan document, which was approved by the Group Manager and the Group Leader on March 8, 2023. The work plans made for 2023 – 2024 include:

- Group and ICS Management Meetings in August and October 2023 and February 2024
- Internal audit in April and September (twice a year)
- Hazardous waste training in September 2023 and March 2024
- HCV outreach to members in December 2023
- Dissemination of fire control to members in December 2023

#### **MS A & MS B**

The group manager can show that the program that has been set has been implemented, including the following:

- Minutes of the Meeting of the Management and Members of the Kelompok Tani Karya Bersama, September 18, 2022, which among other things discussed:
- Discussion on the delivery of B3 waste in the group warehouse
- Discussion on delivery of fertilization doses per tree, use of herbicides and use of PPE
- RSPO related training
- Distribution of PPE
- Minutes of the Agronomy Training on 10 September 2022 facilitated by PT KMB discussed harvesting according to procedures and pest management which was attended by 23 participants.
- Minutes of Fertilization Training on January 2, 2023 which was attended by 7 participants in Suyanto's Area (6.41 Ha)
- Minutes of Harvest Training on 21 June 2023 attended by 11 participants at Seswono Area (20.49 Ha)
- Minutes of the DAMKAR Training on 25 October 2022 which was attended by 31 participants in the Agung Mulya village field accompanied by PT KMB and Poldes
- Minutes of HCV Management Outreach on 15 October 2022 attended by 18 participants

Based on interviews with group members, it is known that they understand about ICS, such as SOP and farmer group policies.

#### **A.2.2**

##### **Eligibility**

The group manager proves the group's compliance with the RSPO Independent Smallholders Standard (RISS), including by conducting field inspections such as herbicide application and harvesting activities. For example, the Minutes of Chemical Inspection dated April 22 2023 at Subandi's area, which includes the completeness of PPE, the chemicals used and the method of application of the chemicals. Based on the results of field observations, it is known that the field conditions are well maintained and farmers can explain the technical maintenance activities that apply in the field.

Kelompok Tani Karya Bersama already has sufficient resources to manage the group. Based on the results of interviews conducted with the Group Manager and ICS, it is known that the person concerned has an understanding of the RSPO standard for Independent Smallholders. Group managers have received training related to RSPO independent smallholders organized by BGA Group on 8 February 2022.

#### **MS A & MS B**



Based on interviews with the group manager, it is known that the manager understands RSPO certification and certification requirements. The group manager also easily manages the members during the audit activities and provides the necessary information for certification.

### A.2.3

#### Eligibility

The training program developed by the Farmer Group management for members is planned annually which includes socialization of operational procedures, RSPO, HCV, OHS and worker aspects, integrated pest control, including the following:

- Minutes of the Agronomy Training on 10 September 2022 facilitated by PT KMB discussed harvesting according to procedures and pest management which was attended by 23 participants.
- Minutes of Fertilization Training on January 2, 2023 which was attended by 7 participants in Suyanto's Area (6.41 Ha)
- Minutes of Harvest Training on 21 June 2023 attended by 11 participants at Seswono Area (20.49 Ha)
- Minutes of the DAMKAR Training on 25 October 2022 which was attended by 31 participants in the Agung Mulya village field accompanied by PT KMB and Poldes
- Minutes of HCV Management Outreach on 15 October 2022 attended by 18 participants

Based on interviews with members, it was stated that they had received training from Farmer Groups or external parties.

### MS A

The training program for Farmer Group members is planned to be implemented every year in stages for all Farmer Group members. In addition, the Farmer Group also shows documents for the realization of the training, including:

- Group and ICS Management Meetings in August and October 2023 and February 2024
- Internal audit in April and September (twice a year)
- Hazardous waste training in September 2023 and March 2024
- HCV outreach to members in December 2023
- Dissemination of fire control to members in December 2023

Based on interviews with the management and group members, it is known that group members have a fairly good understanding of the RSPO and the topics in the training and the training is carried out by competent speakers.

Based on the description above, it can be seen that the Group Manager has implemented a phased approach to ensure that members have progressively attended training related to the RSPO Independent Smallholders Standard.

### MS B

Based on the results of interviews with a sample of 4 members, it was concluded that the level of understanding of group members about RSPO Independent Smallholders Standard, group management and certification requirements including awareness of BMP, HCV, environmental protection, social welfare of workers and business operations is quite good. The resource person was able to explain well regarding all the questions given, even for members who had just joined in 2018. This showed that members had received complete and evenly distributed information across all members. The resource person also added that discussions related to the training were not limited to the planned schedule, they also held non-formal discussions according to needs, for example during field monitoring activities by village administrators or other meetings. The resource person also added that discussions related to the training were not limited to the planned schedule, they also held non-formal discussions according to needs, for example during field monitoring activities by village administrators or other meetings.

	<b>Status: Comply</b>	
--	-----------------------	--

## B – ICS: Policies and Management

### B.1 The group Internal Control System contains documented policies and procedures for operational management.

#### B.1.1

#### Eligibility

Farmer Groups have policies or procedures related to member expulsion as well as providing sanctions to members in the SOP "Seleksi dan Penerimaan Anggota Baru Kelompok Tani Karya Bersama" which was issued on 20 December 2019. The procedure



informs several things, for example:

- Group members can declare their resignation from the group if they no longer agree with the rules determined by the group.
- The group manager, which is approved by other group members, can reprimand and then decide on the revocation of membership if the member is proven to have violated the rules, procedures and policies that have been set.
- The group manager, which is approved by other group members, may reprimand and then decide on the revocation of membership if the member is proven to have committed an action that is detrimental to the group as a whole.

Farmer Groups also have policies or procedures related to periodic inspections (internal audits) in the SOP Internal Audit (Karya Bersama-SOP-ORG-003). The procedure informs internal audit activities, for example:

- Internal audit is conducted once a year for each scope that includes plantation operational activities.
- The results of the internal audit will be discussed in regular meetings of all group members led by the group manager.
- Internal audit records (audit schedule, checklist and audit report) will be stored and maintained by admin staff.

## MS A & MS B

As a guide in the implementation of internal audits, the Karya Bersama Farmer Group has an Internal Audit SOP (Karya Bersama-SOP-ORG-003) dated 20 December 2019 which explains that internal audit activities are carried out at least once a year by personnel who are not related/directly responsible for the schedule. audit of days and/or activities in the audited area. During the audit process, evidence can be shown that audit activities have been carried out in March, April, May, June 2023. The results of the auditor's verification related to internal audit activities show that internal audit activities are still limited to what is lacking and need to be supplemented and have not systematically informed what is required become a major concern such as risk factors, potential non-compliance or repeated errors.

In this regard, Kelompok Tani Karya Bersama are encouraged to develop audit methods systematically in each section, for example ICS compliance, field agronomy compliance, labor and OSH aspects, environmental aspects, legal aspects, documenting records / records, housing aspects including facilities. and infrastructure and other matters regulated in the RSPO principles and criteria for Independent Smallholders.

As a guide in implementing internal audits, the Kelompok Tani Karya Bersama has an Internal Audit SOP (Karya Bersama-SOP-ORG-003) dated December 20 2019 which explains that internal audit activities are carried out at least once a year by personnel who are not directly related/responsible for the schedule audit of days and/or activities in the audited area. During the audit process, evidence can be shown that audit activities have been carried out in March, April, May June 2023. The results of auditor verification related to internal audit activities show that internal audit activities are still limited to what is lacking and needs to be completed and have not systematically informed what is needed. become a major concern such as risk factors, potential non-compliance or repeated errors.

In this regard, the Kelompok Tanin Karya Bersama is encouraged to develop systematic audit methods in each section, for example ICS compliance, agronomy compliance in the field, employment and OHS aspects, environmental aspects, legal aspects, documenting records, housing aspects including facilities. and infrastructure and other matters regulated in the RSPO principles and criteria for Independent Smallholders. (OFI)

## B1.2

### Eligibility, MS A and MS B

Basic information, farm information, production data, legal documents and signed Grower's Declaration are available and can be shown by the group manager. Documents verifications, interviews with associations management as well as farmers during field visit it was known if all members have signed and acknowledged membership requirements. All members prior joint with the association need to complete the requirements as a prospective member, among others copy id cards, land ownerships evidence, family identity cards and etc. For example:

- Statement of Joining the Karya Bersama Farmers Group, number 26/1/KB/2018, on behalf of Joko Siswanto, dated January 8, 2018 and Statement of Group Members, signed June 11, 2020.
- Statement of Joining the Karya Bersama Farmers Group, number 26/1/KB/2018, on behalf of Dinniy Febriyadi, dated January 8 2018 and Statement of Group Members, signed June 11 2020.
- Statement of Joining the Karya Bersama Farmers Group, number 37/1/KB/2018, on behalf of Estu Wulan Ningsih, dated January 7 2018 and Statement of Group Members, signed June 11 2020.

In addition, the certificate holder also manages the production data for each member which is stored in the cooperation office. The production data contains the results of production and sales made by each member.

Based on observation in the Association Office, the Group Manager has maintained the documentation for each members covering but not limited to, list of names and contact detail, polygon map and geolocation, copy of land right/title, member identification number and Member Card, farm area, production data and taxation, records of training given, declaration letter to join the association and willingness to involve in RSPO certification, etc. The results of interviews with farmers during field observation it was known that the understanding and commitment in implementing the RSPO P&C for Independent Smallholders was quite good and there was no coercion prior joint the associations.

<b>Status: Comply</b>
-----------------------

### **C – ICS: Group business planning**

#### **C.1 The group has a group Business Plan prepared with the participation and contributions of group members.**

**C.1.1 Eligibility**  
Kelompok Tani Karya Bersama already has a the Kelompok Tani Karya Bersama Management Work Plan document, which was approved by the Group Manager and the Group Leader on March 8, 2023. Business Plan planned for the current year and the following year included FFB Production Projection Plan.

**MS A**  
The business plan is reviewed annually. The results of the last evaluation are related to such as membership data, training identification, payment premium price, FFB production, Problems, and smallholder contribution.

**MS B**  
Premium payments to group members, including the amount/value and time of payment, clearly recorded, which is shown in the Minutes of Meeting of the Management and Members of Kelompok Tani Karya Bersama, dated 10 June 2023, which among other things discussed the following:

- Discussion on submitting RSPO certification claim funds
- Discussion on the mechanism for distributing RSPO certification claim funds

After discussing and discussing the material or topic above, all participants decided and were able to agree, namely:

1. Money from claims for RSPO certification is not distributed
2. The money from the RSPO certificate was used to buy the Excavator Mini PC 50.

<b>Status: Comply</b>
-----------------------

#### **C.2 The ICS of the group is integrated with the Group's Management Plan.**

**C.2.1 Eligibility**  
The group managers have an annual group training plan, which includes the RSPO Independent Smallholder Standard, group management (including group objectives and structure, and associated certification procedures and processes) and other topics as set out in the Independent Smallholders Standard. The training plan is included in the Kelompok Tani Karya Bersama Management Work Plan document, which was approved by the Group Manager and the Group Leader on March 8, 2023. The work plans made for 2023 – 2024 include:

- Group and ICS Management Meetings in August and October 2023 and February 2024
- Internal audit in April and September (twice a year)
- Hazardous waste training in September 2023 and March 2024
- HCV outreach to members in December 2023
- Dissemination of fire control to members in December 2023

The Group manager can show documentation of the realization of training from 2022 to 2023 that have been implemented include:

- Minutes of the Agronomy Training on 10 September 2022 facilitated by PT KMB discussed harvesting according to procedures and pest management which was attended by 23 participants.
- Minutes of Fertilization Training on January 2, 2023 which was attended by 7 participants in Suyanto's Area (6.41 Ha)

- Minutes of Harvest Training on 21 June 2023 attended by 11 participants at Seswono Area (20.49 Ha)
- Minutes of the DAMKAR Training on 25 October 2022 which was attended by 31 participants in the Agung Mulya village field accompanied by PT KMB and Poldes

**MS A**

Kelompok Tani Karya Bersama can show evidence of periodic monitoring of the plans that have been carried out in management and monitoring reports, from recording production data, training, sales and other implementation according to the plans that have been made. The plans made have been reviewed periodically in the management review, which was last carried out on March 8, 2023

**MS B**

Group managers can show internal audit documents that have been carried out to ensure all members follow and implement existing standards. Internal audits have been conducted from March, April, May, June 2023. Based on documents verifications and interviews with management it was known if all members have been an audit.

Based on field visits and interviews with members of the group members, it is known that smallholder have a fairly good awareness of the RSPO and best management practices. Members can also demonstrate their understanding of some aspects of the RSPO, for example on implementing best management practices.

Status: Comply
----------------

**D – ICS: Group Trading System for Certified Volumes**
**D.1 The group has a procedure and system in place for the tracking of FFB.**
**D.1.1**
**Eligibility**

Karya Bersama Farmers Group maintains annual production and sales volume documents of certified FFB which include traceability of producers and sellers. The recording procedure explains that the Farmer Group represented by the FFB registration section will only document sales records from members of the *Kelompok Tani Karya Bersama* ICS. The person in charge periodically makes a report on the record of sales of FFB sales to the ICS Manager and displays it in the information available at the Farmer Group office.

Currently, based on verification, sales are made on credit. farmer groups do not physically sell certified products.

**Milestone A, Milestone B**

Group Manager has been maintaining annual production records properly in the form of Production Data of Associations. Since obtained RSPO Certificate, it was known if the certified FFB production sold as conventional

Status: Comply
----------------

**D.2 The group documents and implements a system for the tracking of FFB.**
**D.2.1**
**Eligibility, MS A and MS B**

PT Mutuagung Lestari has determined projections for RSPO certified TBS, CSPO, CSPKO and CSPKE for the licensing period 16 November 2022 – 02 September 2023 with the following details:

Table 1: Production Projections

Product	Quantity (MT)
FFB	7.303
CSPO	1.460
CSPKE	200
CSPKO	164

Then, the Karya Bersama Farmers Group has initially sold certified products via book and claim via palm trace with the following details:

Table 2: Sales of certified products

Product	Quantity (MT)
FFB	-
CSPO	-

CSPKO	:	160
-------	---	-----

Meanwhile, the certified production for the period July 2022 – June 2023 is:

Table 3: Actual production

Product		Quantity (MT)
FFB	:	6.695,46
CSPO	:	1.339,09
CSPKE	:	184,13
CSPKO	:	150,65

So based on the data above, between the actual production (table 3) and the certified products sold (table 2) there is a difference of:

Table 4: Sales Difference Data

Product		Quantity (MT)
CSPKO	:	(-9,35)

Referring to the data above, there is an excess of sales between the products produced and those sold by book and claim. In this regard, based on the results of calculations of production data estimates taking into account trends in production data, the amount of production up to August 2023 exceeds the products that have been sold with the following details:

Table 5 : Production Projection

Product		Quantity (MT)
FFB	:	7.813,34
CSPO	:	1.562,67
CSPKE	:	214,87
CSPKO	:	175,80

In this regard, associations are encouraged to develop monitoring mechanisms including sales models/procedures to prevent over-selling of the certified products produced. This is an opportunity for improvement (OFI)

**Status: Comply**

### D.3 The group has a procedure and system for premium distribution.

#### D.3.1

##### Eligibility

The group and group manager have agreed on how to use the premium and this agreement is recorded and submitted to group members in the Group Member Agreement Letter document, dated June 8, 2021, which states, among other things::

- The Kelompok Tani Karya Bersama will conduct sales using the Book & Claim system through the RSPO Palm Trace. However, it is possible to sell certified FFB directly to Mill if there is an opportunity.
- In conducting sales with the Book & Claim system, the group will make sales on a regular basis, taking into account the best prices and offers, while taking into account the stock and actual sales per year.
- The premium/added value obtained from the sale of certified products, both by Book & Claim and physical sales, will be managed by the Group, with the following distribution mechanism:
- 50% of sales proceeds will be managed as group cash and used for group management; and
- The other 50% will be distributed to group members, according to the product yield of each land.
- Distribution of premiums to group members, done once every 6 months. If within that time period the Group does not make sales with the consideration that there is no good price and offer, then this will be conveyed to members and premiums distributed in the next period.

##### MS A & MS B

Premium payments to group members, including the amount/value and time of payment, clearly recorded, which is shown in the Minutes of Meeting of the Management and Members of Kelompok Tani Karya Bersama, dated 10 June 2023, which among other things discussed the following:

- Discussion on submitting RSPO certification claim funds
- Discussion on the mechanism for distributing RSPO certification claim funds

After discussing and discussing the material or topic above, all participants decided and were able to agree, namely:

1. Money from claims for RSPO certification is not distributed
2. The money from the RSPO certificate was used to buy the Excavator Mini PC 50.

Based on interview with farmers members during field observation it was known if the distribution of premium price has been accordance with agreements all parties and the payment conducted in timely manners with fair dan transparent.

	<b>Status: Comply</b>	
--	-----------------------	--

### 3.2.2 The Principle Criteria and Indicators that are applicable to both smallholders (as individual group members) and group managers

Ref Std.	VERIFICATION RESULT of MUTU-Certification	
<b>PRINCIPLE 1: OPTIMISE PRODUCTIVITY, EFFICIENCY, POSITIVE IMPACTS AND RESILIENCE</b>		
<b>1.1 Smallholders establish a legal entity which has organisational capacity to comply with the RSPO Independent Smallholder Standard.</b>		
<p><b>Eligibility,</b>  The Kelompok Tani Karya Bersama has appointed a group manager based on the Decree of the Working Group Members of the Kelompok Tani Karya Bersama Meeting, number 010/09/KB/2018, September 5 2018. The matters that became the decision included appointing Yoyok Kuswoyo as Group Manager of the Kelompok Tani Karya Bersama Certification. The decree also details the duties and responsibilities carried out as Group Manager of the Kelompok Tani Karya Bersama Certification.</p> <p>The group manager has proof of legal identity of the Kelompok Tani Karya Bersama, including in the form of Deed Number 2, dated March 10, 2018, issued by Notary Joni, SH, MH, Sp.N. As for article 21 of the Deed, it is stated that the Governing Body appointed on behalf of Suharno as Chairman, Sukari as Secretary and Sutrisno as Treasurer.</p> <p>The Farmer Group has kept all complete data for each member available in the Farmer Group office. Document the member data. The document contains information related to the legality of land ownership, land area, year of planting, signed smallholder declaration (sustainability commitment), ownership status to location assessment and completeness of registration files. All documents are signed by each member without any coercion</p> <p><b>MS A and MS B</b>  Group manager have an Internal Control System which informed on SOP Internal Audit (Karya Bersama-SOP-ORG-003) which was set on 20 December 2019. The document informs about requirements that must be completed by prospective members, including the fulfillment of the legality of land ownership.</p> <p>The organization is also able to show evidence of implementation related to the detailed annual and monthly activity plans, for example by conducting a management review listed in the Minutes of the Meeting of the Management and Members of the Karya Bersama Farmers Group dated 31 May 2022, which among other things discussed the delivery of funds RSPO certification claims and the mechanism for sharing RSPO certification claims funds. Based on the latest assessment, currently in the 2022 period there are 72 members.</p> <p>Based on the results of the document review at the Farmer Group office the auditor found on a sample basis that 11 members had signed a declaration commitment to comply with the RSPO principles as well as the requirements of other members. For example, Statement of Joining the Karya Bersama Farmers Group, number 26/1/KB/2018, on behalf of Joko Siswanto, dated January 8, 2018 and Statement of Group Members, signed June 11, 2020. This was also confirmed by the results of field interviews, where the farmers admitted that they had signed all the requirements.</p>		
	<b>Status: Comply</b>	
<b>1.2 Smallholders have the capacity to effectively manage their farm.</b>		
<p><b>Eligibility</b>  Not Applicable</p> <p><b>MS A</b>  KTKB already has work program that also inform training program, such as:</p> <ul style="list-style-type: none"> <li>• Standard training for smallholders, institutional certification system, rights and obligations of members</li> <li>• Training on recording and reporting of plantation operations</li> <li>• BMP training</li> </ul>		



- HCV training
- Hazardous waste training
- Etc.

KTKB has shown documentation of training implementation such as photos of implementation, minutes of meeting and attendance such as:

- Minutes of the Agronomy Training on 10 September 2022 facilitated by PT KMB discussed harvesting according to procedures and pest management which was attended by 23 participants.
- Minutes of Fertilization Training on January 2, 2023 which was attended by 7 participants in Suyanto's Area (6.41 Ha)
- Minutes of Harvest Training on 21 June 2023 attended by 11 participants at Seswono Area (20.49 Ha)
- Minutes of the DAMKAR Training on 25 October 2022 which was attended by 31 participants in the Agung Mulya village field accompanied by PT KMB and Poldes
- Minutes of HCV Management Outreach on 15 October 2022 attended by 18 participants
- etc

The training also includes capacity building in production records, including FFB inputs and yields, transactions, and variations and procedures for filling out FFB production logbooks. The activity report document also includes material on the training provided, such as templates for farm management, monitoring and planning, and production (inputs, outputs and transactions). Based on the results of interviews with a sample of association members, it shows that all respondents have a good and uniform understanding of the training provided. The resource persons were also able to explain about the benefits of the training and its purpose, namely to improve oil palm plantations to be more sustainable.

Based on the results of interviews with farmers, it is known that farmers have been given training such as pesticide application, fertilization and others. From the interview, also known that farmers have good understanding on the training provided.

#### **MS B**

Based on the results of interviews with farmers, information was obtained that the recording of production was carried out by farmers and the head of the farmer group. Each farmer has been given a book to record production results. In addition, the recording of farmers' production results is also carried out by the head of the farmer group. Farmers will send documentation of production results to group leaders via WA messages or provide farmer's notebooks to farmer group leaders. Both the farmer and the head of the farmer group have their own books or production records.

From the results of interviews with farmers, it is known that farmers sell directly to agents around their area. The transaction process takes place in real time (at the same time) when farmers hand over FFB to agents. FFB prices change every day according to mutual agreement between farmers and agents.

Based on document verifications production data has been manually recapitulated and accumulated monthly. This data can be seen on the production board which is stored in the cooperative's office, besides that monthly production data has been properly recapitulated in the form of digital records (soft files).

During field observation and interviews, the smallholders can demonstrate and described how they managed their farm effectively in accordance with GAP and how to record their FFB Production, furthermore farmers can demonstrate FFB production calculation and separation between certified and uncertified as well as documentation method that will be carried out. Furthermore, to distinguish certified and uncertified areas in each plot, a marker/farmer id is provided as information that the plot is a certified area.

	<b>Status: Comply</b>	
--	-----------------------	--

#### **1.3**

#### **Smallholders implement good agricultural practices (GAP) on their farms.**

##### **Eligibility**

The Farmer Group shows the SOP for member approval on SOP "*Seleksi dan Penerimaan Anggota Baru Kelompok Tani Karya Bersama*" which was issued on 20 December 2019 which includes the obligation to participate in RSPO certification which is stated in the farmer statement document. The smallholder statement document, among others, states the farmers' willingness to use the best management practices for oil palm which has been signed by all smallholders, such as the one signed by the smallholder on behalf of Estu Wulan Ningsih, dated January 7 2018 and Statement of Group Members, signed June 11 2020.



The results of interviews with the several member members revealed that their understanding and commitment to implementing the RSPO P&C for Independent Smallholders was quite good, especially related to the commitment to implementing Good Agriculture Practices (GAP) in plantation operations. Based on the results of field observations in nine member plots visited, it is known that gradually the implementation of Good Agriculture Practices (GAP) has been implemented even though it has not been fully implemented, such as techniques for preparing oil palm releases, using cover crops, and so on.

Based on the explanation above, it can be concluded that association has a statement of commitment to participate in RSPO certification, one of which is implementing Good Agriculture Practices (GAP) in plantation operations.

#### **MS A**

The cooperative has provided training to all group members regarding Good Agricultural Practices (GAP), such as:

- Minutes of the Agronomy Training on 10 September 2022 facilitated by PT KMB discussed harvesting according to procedures and pest management which was attended by 23 participants.
- Minutes of Fertilization Training on January 2, 2023 which was attended by 7 participants in Suyanto's Area (6.41 Ha)
- Minutes of Harvest Training on 21 June 2023 attended by 11 participants at Seswono Area (20.49 Ha)

The training materials and training realization documents have been well documented. Based on the results of interviews with a sample of farmer members, information was obtained that all respondents could demonstrate all their knowledge related to the results of the training and had been applied to their respective fields. The results of the interviews also showed that they felt a significant positive impact with evidence of an increase in FFB production after implementing the GAP suggested by the cooperative. Members also hope that the cooperative will continue to provide training to ensure continuous improvement is achieved. The results of field visits also show that farmers have implemented GAP well and sustainably.

#### **MS B**

The results of field visits show that farmers have implemented GAP practices well and sustainably, such as not spraying river borders, not clearing land by burning, frond accumulation techniques and maintaining soil moisture properly and so on. Farmers also keep records related to FFB production, use of fertilizers and pesticides as well as other maintenance activities.

Based on field observations and interviews also show that farmers have recorded periodically including monthly production results, fertilization costs, weed spray costs, as well as pruning costs in the Independent Farmer's Record Book.

**Status: Comply**

### **PRINCIPLE 2: ENSURE LEGALITY, RESPECT FOR LAND RIGHTS AND COMMUNITY WELLBEING**

#### **2.1**

**Smallholders have legal or customary rights to use the land in accordance with national and local laws and customary practices.**

##### **Eligibility,**

Based on documents verifications and interview with association managements it was known if the group manager has been maintaining a list of members with their coordinates and maps. All smallholders / farmers members have legal or customary rights to use the land in accordance with national and local laws and customary practices as evidenced by the existence of documents showing the name of the farmer, legality of land ownership (S), coordinate points, geographical location, and map of plot locations. All members prior joint with the association need to complete the requirements as a prospective member, among others copy id cards, land ownerships evidence, family identity cards as well as statement letter of RSPO Certification commitment as mentioned in annex 2 that will provide the following information to my and group manager:

- All land holdings
- Location (coordinates) of all plots currently planted with oil palm
- Information on all plots converted and planted with oil palm after 2005 (through use of the simplified combined HCV-HCS approach for Smallholders)
- Any plots located on steep slopes
- Any plots located on peat
- Details on plans for replanting and expansion of oil palm
- Any existing land disputes
- Ownership and land use status

**MS A**

The organization has managed legality data owned by each member, including the legality of land owned by members (especially 11 sample of members).

Based on the results of the verification of the land ownership documents above, all land certificates are in accordance with the names of farmer members registered in the member information data.

In addition to information related to the legality of land ownership, farmers also have clear boundaries in their respective areas. Auditor also made field observation to sample smallholder members in the field. Based on field observation, it is clear that the boundaries of the member's land area are in form of ditch and pile of palm oil fronds/trunks.

In the previous standard (RSPO Independent Smallholder Standard, 6 November 2019) it was stated that the total land ownership of individuals in Indonesia is no more than 25 Ha, which is the accumulation of total land ownership wherever the location is located. Furthermore, in the RSPO Independent Smallholder Standard, Indonesia National Interpretation for the Production of Sustainable Palm Oil 2020, endorsed by the RSPO Board of Governors on 14 February 2022, it is stated that the maximum area of individual ownership is 20 Ha and the total area is an accumulation of total ownership. land wherever the location is located.

The current situation found that there were 2 farmers who owned land with a total area of more than 20 ha, where when they first joined as members of the group this was still permitted/in accordance with the provisions of the RSPO Independent Smallholder Standard, 6 November 2019.

In this regard, the Karya Bersama Farmers Group is encouraged to adjust the maximum size of members in accordance with the RSPO Independent Smallholder Standard, Indonesia National Interpretation for the Production of Sustainable Palm Oil 2020, endorsed by the RSPO Board of Governors on 14 February 2022. **(OFI)**

**MS B**

Based on documents verifications and interview with association managements it was known if the group manager has been maintain a list of members with their coordinates and maps. All smallholders / farmers members have legal or customary rights to use the land in accordance with national and local laws and customary practices as evidenced by the existence of documents showing the name of the farmer, legality of land ownership (SHM), coordinate points, geographical location, and map of plot locations.

Each plot has proof of land ownership in accordance with the land ownership documents. Based on the results of field visits, it is known that the farmers have been operating on their respective lands which are marked by the presence of stakes / markers between plots / land plots or other markers (trench, tree, midrib and so on).

**Status: Comply**

**2.2**

**Smallholders have not acquired lands from indigenous peoples, local communities or other users without their free, prior and informed consent (FPIC), based on a simplified FPIC approach.**

**Eligibility, MS A and MS B**

There are no customary rights and traditional rights on the land of KTKB members, all plots are areas with individual ownership rights. Farmers have a land tenure statement which also provides information about land maps, coordinates and others. The evidence of land ownership such as a land certificate has been signed by the village head. Example of land ownership:

No.	Smallholder Name	Location	Legal Document type	Coordinate	
				Latitude	Longitude
1	Joko Siswanto	Agung Mulya Village	SKT	1°44'2"S	112°38'30"E
2	Denny Febriyadi	Agung Mulya Village	SKT	1°47'2"S	112°38'25"E
3	Jumadi	Agung Mulya Village	SHM	1°45'5"S	112°37'16"E
4	Dasimin	Luwuk Kowan Village	SKT	1°44'3"S	112°37'22"E

The results of interviews with group manager, members of farmers and the heads of village around, obtained information that the land of farmers who are members of the KTKB is individual land. From the results of the interviews, known that there had never been a land dispute between KTKB member farmers or with other communities. The audit team has checked the land ownership documents which have been compared with the results of farmer interviews. From the verification results, known that there is no difference in the name of the land owner and the name on the land ownership document. Furthermore the members has been declare regarding

dispute disclosure form as stated in Annex 3 (Disclosure form for Land Tenure and Utilization History and Presence of Land Conflict". ) that acknowledges by village head.

**Status: Comply**

### 2.3

**The right to use the land is not disputed by indigenous peoples, local communities or other users.**

#### Eligibility

Results of document verification, interviews with KTKB administrators and farmers, it was found that all members had signed and acknowledged the membership requirements. Before joining the association, all members need to complete the requirements as prospective members, including photocopy of ID card, evidence of land ownership, statement of commitment to RSPO Certification as referred to in attachment 2, and others. The commitments and statements of certification members are as follows:

- Declare that they are willing to join the Karya Bersama Farmers Group, participate in supporting and being involved in group membership. As a member, they are willing to follow all the rules, procedures and policies set by the group, to be involved in building documentation and improvement in cultivation, the environment and society.
- Will provide information to the group manager including all information regarding land ownership, land disputes (if any), land ownership status and land use
- Will be committed to ensuring that there is no forced labor practice, paying the minimum wage in accordance with applicable regulations and trying to minimize the use of paraquats, until they don't use them anymore, protect conservation areas and others.

The results of field observations and interviews group manager, farmer members and heads of village around known that there are no land disputes on the land of farmers who are members of KTKB. . Furthermore the members has been declare regarding dispute disclosure form as stated in Annex 3 (Disclosure form for Land Tenure and Utilization History and Presence of Land Conflict". ) that acknowledges by village head.

#### MS A and MS B

During the audit activity, the audit team visited the sample farmers' plots and it was found that each plot had evidence of land certificates from head of village and certificates of ownership. From the results of field observations, it is known that all boundaries are clearly visible in the field. The boundaries are in the form of boundary stakes, woody plants etc. From field observations it is also known that the farmers have been operating on their respective lands.

The results of interviews with group manager and farmers, known that checking the boundaries of the area is carried out routinely alone with operational activities to ensure that no area boundaries are violated. The results of field observations and interviews group manager, farmer members and heads of village around known that there are no land disputes on the land of farmers who are members of KTKB.

**Status: Comply**

### 2.4

**Smallholder plots are located outside of areas classified as national parks or protected areas, as defined by national, regional or local law or as specified in National Interpretations.**

#### Eligibility

Based on document verification and comparison of the land distribution map with the forest area map revealed that several land parcels belonging to KTKB members had HPK status and most of the others had APL status. As explained in Presidential Regulation Number 88 of 2017 concerning Settlement of Land Tenure in Forest Areas (PPTKH), it is known that the Government will immediately settle and provide legal protection for the rights of communities who control/use land parcels in forest areas. Communities who control land in forest areas will be given ownership rights, if they meet the criteria, namely:

1. The land has been used properly
2. Land parcels are not the object of a lawsuit/dispute
3. There is recognition by adat or the village head with witnesses who can trusted

All KTKB members already have land ownership certificates in the form of *SKT and SHM* so it can be concluded that they already have the point 3 element of the above statement.

#### MS A

Same with Eligibility

**MS B**

Same with Eligibility.

**Status: Comply**

**2.5**

**For new plantings, smallholders do not clear or acquire any land without obtaining the free, prior and informed consent (FPIC), of indigenous people and/ or local communities and/ or other users, based on a simplified FPIC approach.**

**Do any smallholders within the group have plans for new plantings of oil palm? If none, SKIP**

**Eligibility**

Based on document verification and interviews with the KTKB management and its members, it is known that there are no plans for new planting of oil palm. In accordance with the distribution of planting years, it is known that oil palm planting was in the period 2004 – 2019. In addition, all members have signed and are aware of the membership requirements, namely before participating in the KTKB, all members must complete the requirements as prospective members, including photocopies of KTP, proof of land ownership, family identity card, statement of commitment to RSPO certification as referred to in attachment 2, and others. The commitment and statement of certification members are as follows:

- Not clearing or acquiring land from indigenous peoples, local communities, or other users without their free, prior and informed consent (FPIC), based on a simplified FPIC approach
- No new planting or no expansion of existing farms in primary forests, HCV areas, HCS forests, in riparian areas, or on steep slopes (more than 25 degrees or as in National Interpretation)
- Protect HCVs and HCS forests through the precautionary practices approach
- No new planting on peat and replanting on peat only in areas with low risk of flooding and saline intrusion

KTKB has been able to show a statement of commitment of all its members, for example as follows:

- Letter of Statement of Commitment of Member on behalf of Gimani dated 2 January 2022.
- Letter of Statement of Commitment of Member on behalf of Sugito dated 11 June 2020.
- Letter of Statement of Commitment of Member on behalf of Sumarmun dated 11 June 2020.
- Letter of Statement of Commitment of Member on behalf of Amri Mustaqim dated 11 June 2020.
- Letter of Statement of Commitment of Member on behalf of Elda Erdayani dated 2 January 2022.

**MS A**

All documents required for membership including the Statement of Commitment for KTKB members are kept in the membership folder of each group in the KTKB office. The completeness of the member document requirements has been checked and evaluated by the KTKB management. The evaluation carried out by the head of the KTKB on membership requirements is in the form of a checklist of requirements that must be met by group members.

In addition, based on interviews with several KTKB members revealed that the members already knew the membership requirements and had signed a statement letter to join the KTKB and were committed to complying with the RSPO standard requirements.

**MS B**

Based on document review, interviews with group administrators and KTKB members as well as field observations it is known that there are no new planting plans made by farmer members of the KTKB.

**Status: Comply**

**PRINCIPLE #3 RESPECT HUMAN RIGHTS, INCLUDING WORKERS' RIGHTS AND CONDITIONS**
**3.1**

**There is no use of forced labour.**

**Eligibility**

All members have signed a statement of commitment related to the prohibition of forced labor. For example, the Farmer's Statement on behalf of Sugito in point 3 reads "*Ensure that there is no forced labor practice in plantation operations and stop the existing forced labor practice*". The statement was signed by the farmer on 11 June 2020.

KTKB have a statement to commit to RSPO certification signed by each member prior joining the group. In the statement of commitment, it is stated that the member of KTKB members is committed to "Ensure that there are no forced labor practices in plantation operations and stop existing forced labor practices." KTKB has been able to show a statement of commitment of all its members, for example as follows:

- Letter of Statement of Commitment of Member on behalf of Gimani dated 2 January 2022.
- Letter of Statement of Commitment of Member on behalf of Sugito dated 11 June 2020.
- Letter of Statement of Commitment of Member on behalf of Sumarmun dated 11 June 2020.
- Letter of Statement of Commitment of Member on behalf of Amri Mustaqim dated 11 June 2020.
- Letter of Statement of Commitment of Member on behalf of Elda Erdayani dated 2 January 2022.

#### MS A

The farmers have also attended training or socialization related to the prohibition of forced labor held by the Farmer Group on 10 February 2022, which was attended by 27 members. In addition, based on the results of interviews with several farmers in the field, it is known that they have understood the prohibition of child labor and forced labor for all KTKB members.

#### MS B

Based on interviews with farmers of KTKB members, it is known that the members understand information related to the prohibition of forced labor. All members carry out farmers activities independently and in mutual cooperation.

	<b>Status: Comply</b>	
--	-----------------------	--

### 3.2

**Children are not employed or exploited. Work by children is acceptable on family farms, under adult supervision and when not interfering with education programmes. Children are not exposed to hazardous working conditions.**

#### Eligibility

All members have signed a statement of commitment related to the prohibition of forced labor. For example, the Farmer's Statement on behalf of Sugito in point 3 reads "Ensure that there is no forced labor practice in plantation operations and stop the existing forced labor practice". The statement was signed by the farmer on 11 June 2020.

KTKB have a statement to commit to RSPO certification signed by each member prior joining the group. In the statement of commitment, it is stated that the member of KTKB members is committed to "Ensure that there are no forced labor practices in plantation operations and stop existing forced labor practices." KTKB has been able to show a statement of commitment of all its members, for example as follows:

- Letter of Statement of Commitment of Member on behalf of Gimani dated 2 January 2022.
- Letter of Statement of Commitment of Member on behalf of Sugito dated 11 June 2020.
- Letter of Statement of Commitment of Member on behalf of Sumarmun dated 11 June 2020.
- Letter of Statement of Commitment of Member on behalf of Amri Mustaqim dated 11 June 2020.
- Letter of Statement of Commitment of Member on behalf of Elda Erdayani dated 2 January 2022.

#### MS A

Based on interviews with farmers who are members of the KTKB, it is known that the members understand information related to the prohibition of forced labor. All members carry out farmers management activities independently and in mutual cooperation. KTKB also has SOP of KTKB New Member Selection and Enrollment (No.: Karya Bersama-SOP-ORG-004) which was set on 20 December 2019 which has explained about member requirement to show identity card to show that members are already above 18 years old.

#### MS B

Same as MS A

	<b>Status: Comply</b>	
--	-----------------------	--

### 3.3

**Workers' pay complies with minimum legal requirements, mandatory industry standards as defined by national law or collective bargaining, whichever takes priority in local regulations.**



**Are there workers on the farm? If no, SKIP**
**Eligibility, MS-A, & MS-B**

Based on document review as well as interviews with representative members of Karya Bersama and Ngudi Makmur groups and the management of KTKB, it was found that the management of plantations was carried out individually together with other members. All members carry out farmers activities independently and in mutual cooperation.

**Status: Comply**
**3.4**
**Workers understand their rights and freedom to file a complaint to group manager or relevant third parties, including RSPO.**
**Are there workers on the farm? If no, SKIP**
**Eligibility**

KTKB have a statement to commit to RSPO certification signed by each member prior joining the group. In the statement of commitment it is stated that the member of KTKB members is committed to "Respect the rights of workers to submit complaints." KTKB can show several examples of commitments that have been signed by several members who were interviewed at the time of assessment as follows:

- Letter of Statement of Commitment of Member on behalf of Gimani dated 2 January 2022.
- Letter of Statement of Commitment of Member on behalf of Sugito dated 11 June 2020.
- Letter of Statement of Commitment of Member on behalf of Sumarmun dated 11 June 2020.
- Letter of Statement of Commitment of Member on behalf of Amri Mustaqim dated 11 June 2020.
- Letter of Statement of Commitment of Member on behalf of Elda Erdayani dated 2 January 2022.

KTKB also shows SOP for external and internal complaints No: Karya Bersama-SOP-ORG-005 with a flow chart as follows:

- Submitting grievance/complaint to Head of Pokja in writing or verbally.
- Dispute/grievance/complaint handling is done by involving both parties.
- Prioritize deliberation to reach consensus. if the complaint is not resolved, then the farmer group and the party filing the complaint can resolve it through the Mediation Forum.
- All forms of direct or indirect intimidation must be avoided in accordance with FPIC rules.

**MS-A and MS-B**

Based on the results of interviews with smallholders, it was explained that they had understood the existing complaint mechanism. As for the complaint records managing by the secretary and response period managing by the head group manager. The group manager has prepared logbook of grievance and complaint for smallholder and external stakeholders, and during the 2022 until 2023 there is no grievance submitted to the Group manager or KTKB.

**Status: Comply**
**3.5**
**Working conditions and facilities are safe and meet minimum legal requirements.**
**Eligibility:**

The Farmer Group shows the SOP for member approval on SOP "Seleksi dan Penerimaan Anggota Baru Kelompok Tani Karya Bersama" which was issued on 20 December 2019 which includes the obligation to participate in RSPO certification which is stated in the farmer statement document. The smallholder statement document, among others, states the farmers' commitment to providing safe facility (for example, a special warehouse for storing spray equipment and other chemicals), such as the one signed by the smallholder on behalf Elda Erdayani dated 2 January 2022.

Based on interviews with farmers, they also admitted that they had attended OHS training, particularly related to occupational safety and health on agronomy activities.

**MS-A:**

The association shows recordings of training for example related to HCV, IPM, Hazardous Waste, Workers' Rights and Conditions, PPE, Emergency Response, Women's Involvement, Policy on children in work, RSPO Certification System, Independent Smallholders Standard, Best Smallholder Practices, etc are as follows:

- Minutes of the Agronomy Training on 10 September 2022 facilitated by PT KMB discussed harvesting according to procedures and pest management which was attended by 23 participants.

- Minutes of Fertilization Training on January 2, 2023 which was attended by 7 participants in Suyanto's Area (6.41 Ha)
- Minutes of Harvest Training on 21 June 2023 attended by 11 participants at Seswono Area (20.49 Ha)
- Minutes of HCV Management Outreach on 15 October 2022 attended by 18 participants

**MS-B:**

Based on the results of field observations and interviews with workers in harvesting activities and with smallholders, it is known that currently there are no group members who provide housing facilities for workers because the workers are local villagers and family members, in addition to workers and smallholders already have an understanding of the required PPE as well as potential hazards and their mitigation.

	<b>Status: Comply</b>	
--	-----------------------	--

**3.6**

**There is no discrimination, harassment, or abuse on the farm**

**Are there workers on the farm? If no, SKIP**

**Eligibility**

KTKB shows statement of commitment of KTKB members which has been signed with each member. This statement of commitment has including commitment of "no discrimination, harassment or abuse on the farm". In addition, KTKB can show several examples of commitments that have been signed by several members who were interviewed at the time of assessment as follows:

- Letter of Statement of Commitment of Member on behalf of Gimani dated 2 January 2022.
- Letter of Statement of Commitment of Member on behalf of Sugito dated 11 June 2020.
- Letter of Statement of Commitment of Member on behalf of Sumarmun dated 11 June 2020.
- Letter of Statement of Commitment of Member on behalf of Amri Mustaqim dated 11 June 2020.
- Letter of Statement of Commitment of Member on behalf of Elda Erdayani dated 2 January 2022.

Based on interview with KTKB manager and farmers, it is known that All members carry out farmers activities independently and in mutual cooperation.

**MS A and MS B**

Based on result of interview with KTKB members, it is known that members are aware of the need for a safe workplace and all members carry out farmers activities independently and in mutual cooperation.

	<b>Status: Comply</b>	
--	-----------------------	--

**PRINCIPLE #4 PROTECT, CONSERVE AND ENHANCE ECOSYSTEMS AND THE ENVIRONMENT**
**4.1**

**High Conservation Values (HCVs) on the smallholder plot or within the managed area and High Carbon Stock (HCS) forests identified after November 2019 using the simplified combined HCV-HCS approach are managed to ensure that they are maintained and/or enhanced.**

**Eligibility**

Result of documents verification, interview with group management as well as its members during field visit, it is known if all members have signed and acknowledged membership requirements. All members prior joint with KTKB need to complete the requirements as a prospective member, among others copy id cards, land ownerships evidence, family identity cards and etc. Furthermore, the members also need to sign Letter of Statement of Commitment of Member as mentioned in annex 2.

All member farmers have committed to protecting HCV and HCS forests through a precautionary practice approach. This is contained in Letter of Statement of Commitment of Member as mentioned in annex 2. KTKB has determined their conservation area with prudence by including locations outside the scope of certification as HCV areas. The total area of HCVs contained within the scope of certification is 12.20 hectares in the form of river borders.

Group manager and all smallholder members also understand the basic concepts of HCV areas and HCS forests. This is evidenced by result of interview with sample of KTKB members who stated that they know the types of animals that must be protected, are prohibited from burning, hunting and fishing in ways that are not environmentally friendly (poisoning and electrocution) and are prohibited from applying chemicals. around a body of water with a limit of 20 meters.



**MS A**

KTKB can show evidence that all group members have attended training on the protection of flora and fauna as well as conservation areas, including waterways, and areas with high erosion potential as evidenced in the following document:

- Document of Training Activities regarding to HCV Management on 15 October 2022. This training was provided by representatives of ICS and attended by 18 participants.
- Document of Training Activities regarding to agronomical best management practice and landfire firefighting on 25 October 2022. This training was provided by representatives of PT KMB and village police.
- Document of Training Activities regarding to RSPO independent smallholder standard and ICS on 10 September 2022 to smallholders group. This training was provided by representatives of PT KMB.

The training also explained the prohibition on the application of chemicals around the border areas of rivers and water bodies, as well as the destruction of forest areas. The training was provided by a supervisory team from PT KMB who are competent trainers in their respective fields. The results of interviews with all sample farmers also prove that they have a good understanding and can demonstrate an understanding of HCV and HCS forests, human-wildlife conflict and RTE. They can also explain the benefits of having animals and plants around them, for example, one farmer explained the benefits of snakes, eagles and owls as predators of rats, insectivorous birds that control pests and others.

**MS B**

KTKB has identified species related to RTE, HCV, HCS forest as evidenced from the document of High Conservation Value (HCV) Management Results for Independent Smallholders conducted in January 2020 which was carried out in Telaga Antang District. The study has covered 70 farmer members. This activity is carried out because independent smallholders must meet the RSPO principles and criteria to obtain certification.

The results of interviews with all sample farmers concluded that all farmers were aware of RTE, HCV and HCS forest species in their area. The resource persons were also able to explain the precautionary practices applied in their area, including:

- Protect all animals found in their land area
- Do not hunt all flora and fauna in their environment
- No burning and forest destruction
- Ensure that the habitat of flora and fauna in their environment is not damaged
- Installing a warning board/signboard related to the above

<b>Status: Comply</b>
-----------------------

**4.2**

**Where the existing smallholder plot has been planted and cleared after November 2005 or is on an area identified as HCS forests after November 2019 up to the eligibility period, a remediation and compensation process appropriate for smallholders based on Land Use Change Analysis (LUCA) will be applicable (Reference preamble).**

**Eligibility**

KTKB can show information on all plots of smallholders converted and planted with oil palm before and after 2005 as well as all coordinates/maps of plantation plots. A simplified combined HCV approach has also been used which can be proven in the statement of commitment document contained in Letter of Statement of Commitment of KKTTSP members which shown statements as follows:

- I recognize the importance of sustainable production.
- I will join a farmer group to pursue group certification of the RSPO ISH Standard and comply with the principles and their relevant criteria and indicators
- I will provide the following information to my and group manager:
  - All land holdings
  - Location (coordinates) of all plots currently planted with oil palm
  - Information on all plots converted and planted with oil palm after 2005 (through use of the simplified combined HCV-HCS approach for Smallholders)
  - Any plots located on steep slopes
  - Any plots located on peat
  - Details on plans for replanting and expansion of oil palm
  - Any existing land disputes
  - Ownership and land use status

- Source of farm labor.

LUCA disclosure result was shown by KTKB on 16 October 2020 for the scope of 70 KTKB members. From the summary, it is known that the study area is 380.19 ha with the result of LUC Analysis Methodology Review: Pass; Final Conservation Liability: 0.00 ha; and Environmental remediation area 12.62 ha. Dokumen LUC Analysis Verification Result Document Version 1 tanggal 2 September 2022 yang menerangkan bahwa terdapat penambahan area kelola 48,96 ha dengan Final Conservation Liability 0 ha, dan Environmental Remediation Area 0 ha.

LUCA disclosure result was shown by KTKB dated 2 September 2022 which explains that there is an additional 48.96 ha of management area with Final Conservation Liability 0 ha, and Environmental Remediation Area 0 ha.

#### **MS A**

LUCA disclosure result was shown by KTKB on 16 October 2020 for the scope of 70 KTKB members. From the summary, it is known that the study area is 380.19 ha with the result of LUC Analysis Methodology Review: Pass; Final Conservation Liability : 0.00 ha; and Environmental remediation area 12.62 ha.

#### **MS B**

Based on verification of communication between RSPO and KTKB, it shows that the KTKB has identified areas of land use change and has been submitted to the RSPO. Other evidence is the document of the results of the LUCA Study for the scope of 72 farmers conducted in 2020 with the final document out on 16 October 2020 and 2 September 2022 where Final Conservation Liability in this ISH group : 0.00 ha; and Environmental remediation area 12.62 ha.

	<b>Status: Nonconformity number 2022.02 with Major Category</b>	
--	---	--

#### **4.3**

**New plantings of independent smallholders, since November 2019:**

- Do not replace any HCVs
- Do not replace any HCS forests as defined by the simplified combined HCV-HCS approach
- Are not on steep slopes (more than 25 degrees or as in NI)
- Are not on peat areas of any depth.

**Do any smallholders within the group have plans for new plantings of oil palm? If none, SKIP**

#### **Eligibility, MS A & MS B**

Based on result of document verification and interview with KTKB management as well as its member, there is no plan to plant new oil palm outside the current certification area according to long-term plan of 5 years. The last planting year in KTKB is 2018. Based on the 2021 work plan document and the KTKB 5-year business plan, it is known that until 2025 there is no plan for smallholders to plant new oil palms. Results of interviews with group managers and members of KTKB also stated same thing, for plans have not been made. Regarding replanting in conservation areas, all members have signed a declaration not to carry out new plantings in HCV or HCS forests, on steep slopes or on peat. In addition, for all the current KTKB members, there are no areas with these qualifications. KTKB also has SOP No. Karya Bersama-SOP-OPR-002 concerning Land Preparation.

	<b>Status: Comply</b>	
--	-----------------------	--

#### **4.4**

**Where smallholder plots exist on peat, subsidence and degradation of peat soils is minimised by use of best management practices.**

**Do any smallholders within the group have existing plots on peat? If no, SKIP**

#### **Eligibility, MS A & MS B**

Based on document verification soil type map of Karya Bersama Farmer Group with source of soil type survey map of PT KMB (Karya Makmur Bahagia) as one of coach of farmer group with a scale of 1:150,000, information was obtained that there was no peat in the plots managed by farmers. It is known that types of soil found in KTKB operational area are Dystrudepts, Local Alluvium, and Paleudults. The Farmer Group also presented a smallholder statement document stating, among other things, the farmers' willingness not to carry out new plantings on peatlands and replanting on peatlands only in areas with a low risk of flooding and saltwater intrusion as well as the use of best management practices for oil palm on peatlands, as described above. For example, it has been signed by the farmer as below:

- Letter of Statement of Commitment of Member on behalf of Gimán dated 2 January 2022.
- Letter of Statement of Commitment of Member on behalf of Sugito dated 11 June 2020.
- Letter of Statement of Commitment of Member on behalf of Sumarmun dated 11 June 2020.
- Letter of Statement of Commitment of Member on behalf of Amri Mustaqim dated 11 June 2020.
- Letter of Statement of Commitment of Member on behalf of Elda Erdayani dated 2 January 2022.

**Status: Comply**

#### 4.5

**Plots on peat are replanted only on areas with low risk of flooding or saline intrusion as demonstrated by a risk assessment.**

**Do any smallholders within the group have plans for replanting plots that are located on peat? If no, SKIP**

#### Eligibility, MS A & MS B

Based on document verification soil type map of Karya Bersama Farmer Group with source of soil type survey map of PT KMB (Karya Makmur Bahagia) as one of coach of farmer group with a scale of 1:150,000, information was obtained that there was no peat in the plots managed by farmers. It is known that types of soil found in KTKB operational area are Dystrudepts, Local Alluvium, and Paleudults. The Farmer Group also presented a smallholder statement document stating, among other things, the farmers' willingness not to carry out new plantings on peatlands and replanting on peatlands only in areas with a low risk of flooding and saltwater intrusion as well as the use of best management practices for oil palm on peatlands, as described above. For example, it has been signed by the farmer as below:

- Letter of Statement of Commitment of Member on behalf of Gimán dated 2 January 2022.
- Letter of Statement of Commitment of Member on behalf of Sugito dated 11 June 2020.
- Letter of Statement of Commitment of Member on behalf of Sumarmun dated 11 June 2020.
- Letter of Statement of Commitment of Member on behalf of Amri Mustaqim dated 11 June 2020.
- Letter of Statement of Commitment of Member on behalf of Elda Erdayani dated 2 January 2022.

**Status: Comply**

#### 4.6

**Fire is not used on the oil palm plot for preparing land or for pest control, nor open fire for waste management on the farm.**

#### Eligibility, MS A & MS B

Result of documents verification, interview with group management as well as its members during field visit, it is known if all members have signed and acknowledged membership requirements. All members prior joint with KTKB need to complete the requirements as a prospective member, among others copy id cards, land ownerships evidence, family identity cards and etc. Furthermore, the members also need to sign Letter of Statement of Commitment of Member as mentioned in annex 2.

KTKB can show a commitment document not to use fire during land preparation, pest control, or waste management from each member as contained in Letter of Statement of Commitment of Member. Fire is not used on the oil palm plot for preparing land or for pest control, nor open fire for waste management on the farm, and no burning for preparing land or pest control. The commitment has been signed by each member before joining.

KTKB has provided training to all group members related to land preparation, waste management and fire control which is shown in the following types of documents:

- Document of Training Activities regarding to HCV Management on 15 October 2022. This training was provided by representatives of ICS and attended by 18 participants.
- Document of Training Activities regarding to agronomical best management practice and landfire firefighting on 25 October 2022. This training was provided by representatives of PT KMB and village police.
- Document of Training Activities regarding to RSPO independent smallholder standard and ICS on 10 September 2022 to smallholders group. This training was provided by representatives of PT KMB.
- Document of Training Activities regarding to Hazardous Waste Management on 18 September 2022. This training was provided by representatives of ICS and attended by 41 participants.

Based on the results of field observations and interviews with village heads, information was obtained that there was no physical evidence of new burning for oil palm land preparation by farmers. KTKB has also not carried out replanting activities or opening new land. The results of the interviews also stated that they understood the procedures for prohibiting burning so that when replanting was carried out they would use mechanical means.

Based on the planting year data, there were no areas cleared by members after joining as KTKB members. The results of interviews with KTKB members stated that most of the land planted with oil palm was former rice fields or shrubs, so land clearing did not need to be burnt.

In handling waste generated during plantation activities, all waste is collected and stored in waste storage warehouse by Environmental Section of KTKB. Waste generated is in the form of fertilizer sacks and pesticide packaging. Furthermore, KTKB cooperates with PT KMB in accordance with the Hazardous Waste Management Agreement number 001/KTKB/SPK/PLB3/II/2022 dated 04 January 2022 between Karya Bersama Farmer Group and PT Karya Makmur Bahagia where Hazardous Waste is sent to PT KMB every 6 months. The Agreement is valid from the time it is set until the time determined later. KTKB can show Hazardous Waste Delivery Note number 001/LB3-C/KB/VII/2023 dated 31 July 2023 which has been equipped with a receipt stamp at PT KMB

KTKB also has SOP No. Karya Bersama-SOP-OPR-002 concerning Land Preparation, SOP No. Karya Bersama-SOP-OPR-007 regarding Pest and Disease Management, SOP No. Karya Bersama-SOP-K3L-003 concerning Hazardous Waste Management, SOP No. Karya Bersama-IK-K3L-004 concerning Non-Hazardous Waste Management, and SOP No. Karya Bersama-SOP-K3L-006 concerning Handling of Land Fire. KTKB members explained that pest control in their lands uses pesticides that have been recommended based on the results of studies conducted by group administrators and administrators. Farmers stated that they had never carried out pest control during 2022 - 2023 either with fire or chemicals. Based on the results of interviews and field visits to plantation areas, there was no identification of the use of fire in opening new land, managing waste or controlling pests.

**Status: Comply**

#### **4.7 Riparian buffer zones are identified and managed to ensure they are maintained and/or enhanced.**

##### **Eligibility**

KTKB has identified a riparian buffer zone within the group with result that there are several group members who are members of KTKB that have a riparian zone in their plantation area with a total area of 12.20 ha. All group members represented from sample members have also signed a declaration not to carry out new plantings in riverbank areas which can be demonstrated in statement of commitment document to protect HCV and HCS forests through precautionary practice approach of each member as contained in Letter of Statement of Commitment of each member. Letter of Statement of Commitment which has been signed by each member has shown statements as follows:

- Not clearing or acquiring land from indigenous peoples, local communities, or other users without their free, prior and informed consent (FPIC), based on a simplified FPIC approach
- Resolve any existing disputes
- No new planting or no expansion of existing farms in primary forests, HCV areas, HCS forests, in riparian areas, or on steep slopes (more than 25 degrees or as in National Interpretation)
- Protect HCVs and HCS forests through the precautionary practices approach
- No new planting on peat and replanting on peat only in areas with low risk of flooding and saline intrusion
- Use of best management practices for oil palm on peat
- No burning for preparing land or pest control
- Minimize and control erosion.

##### **MS A**

KTKB has provided training to all group members related to land preparation, waste management and fire control which is shown in the following types of documents:

- Document of Training Activities regarding to HCV Management on 15 October 2022. This training was provided by representatives of ICS and attended by 18 participants.
- Document of Training Activities regarding to agronomical best management practice and landfire firefighting on 25 October 2022. This training was provided by representatives of PT KMB and village police.
- Document of Training Activities regarding to RSPO independent smallholder standard and ICS on 10 September 2022 to smallholders group. This training was provided by representatives of PT KMB.
- Document of Training Activities regarding to Hazardous Waste Management on 18 September 2022. This training was provided by representatives of ICS and attended by 41 participants.

Some of the planned activities are marking area boundaries, preventing and controlling land fire hazards, protecting areas and species

of flora and fauna. Types of derivative activities that will be carried out include making boards prohibiting land clearing by burning, installing boards prohibiting spraying completely, and boards prohibiting hunting. The results of the interviews also show that the farmers are aware of the management of the riparian area including an action plan to maintain and/or improve the riparian area such as not using chemicals such as fertilizers and pesticides, or not replanting. river border area.

#### **MS B**

Based on result of verification of HCV document, LUCA and maps of distribution of member lands, it is shown that there are several lands belonging to KTKB members located on river borders. The entire area is protected and designated as an HCV area with a total area of 12.20 Ha in riparian category. Some of activities planned are marking of area boundaries, prevention and control of land fire hazards, protection of areas and species of flora and fauna. Types of derivative activities that will be carried out include making signboards prohibiting land clearing by burning, installing a signboard for prohibiting spraying completely, and prohibiting hunting signboards. Result of interview also showed that members were aware of the management of river border buffer zones including action plans to maintain and/or increase river border buffer zones such as not applying chemicals such as fertilizers and pesticides, or not replanting in river border areas. KTKB also has SOP No. Karya Bersama-SOP-K3L-008 concerning HCV Management, SOP No. Karya Bersama-SOP-OPR-010 concerning Water and Soil Coservation. Smallholders maintain and/or increase riparian buffer zone areas as evidenced by interviews and field visits. Results of interview with all sample members stated that they already know how to manage riparian areas such as not using agrochemical for palm oil management in riparian areas.

<b>Status: Comply</b>
-----------------------

#### **4.8**

##### **Pesticides are used in ways that do not endanger health of workers, family, communities or the environment.**

##### **Eligibility**

Farmers have committed to gradually avoiding paraquats as stated in the Statement of Joining the Ngudi Makmur Farmers Group, number 12/1/NM/2018, on behalf of Dasimin, dated January 4 2018 and Statement of Group Members, signed June 18 2020 , which states, "Efforts to minimize the use of paraquat, until finally we don't use it anymore."

Based on the results of a review of the 2022 and 2023 Pesticide Chemical Use Recap documents, it is known that there is no use of the active ingredient paraquat and the pesticides used are the active ingredients Glyphosat and Methyl Metsufuron.

The results of interviews with farmers, it was concluded that farmers are aware of pesticides that are categorized by the World Health Organization (WHO) in class 1A or 1B and which are included in the list of the Stockholm Convention or the Rotterdam Convention such as paraquat, and are well aware of the negative impacts of using paraquat so that they are committed to will no longer use paraquat in the management of its oil palm plantations.

#### **MS A**

Farmers have conducted training on BMP starting from fertilization, harvesting, pesticide use, waste management Hazardous and toxic materials including used pesticide packaging and other BMP, some examples of training that have been carried out include Agronomy Training on 10 September 2022 facilitated by PT KMB discussed harvesting according to procedures and pest management which was attended by 23 participants. The training explains best management practices for pesticides including pesticide use, awareness of risks to pregnant and lactating women and young workers, storage and disposal of pesticide waste, prohibition of use of paraquat and pesticides listed by WHO Class 1A or 1B by the Stockholm or Rotterdam Conventions.

Based on the results of a review of the 2022 and 2023 Pesticide Chemical Use Recap documents, it is known that there is no use of the active ingredient paraquat and the pesticides used are the active ingredients Glyphosat and Methyl Metsufuron.

#### **MS B**

Based on the results of a review of the 2022 and 2023 Pesticide Chemical Use Recap documents, field observations and interviews with several farmers, farmers have not used pesticides with the active ingredient paraquat. Some farmers only use herbicides with the active ingredients Glyphosat and Methyl Metsufuron for weed control. This is in accordance with the association's directives, all pesticides used have a registration issued by the government.

<b>Status: Comply</b>
-----------------------

#### **4.9**

##### **The group and smallholders manage pests, diseases, weeds and invasive introduced species using appropriate techniques, including but not limited to Integrated Pest Management (IPM) techniques.**

##### **Eligibility**

-



**MS A & MS B**

Farmers have conducted training on BMP starting from fertilization, harvesting, pesticide use, waste management Hazardous and toxic materials including used pesticide packaging and other BMP, some examples of training that have been carried out include Agronomy Training on 10 September 2022 facilitated by PT KMB discussed harvesting according to procedures and pest management which was attended by 23 participants. The training explained about Integrated Pest Management, fertilization, harvesting, pesticide use, waste management Hazardous and toxic materials including used pesticide packaging, disease, weeds and invasive introductions.

In addition, the Association also has a temporary storage area for hazardous and toxic waste in village. When the farmers who are members of the association have finished spraying, the used pesticide containers will be taken to a temporary storage area for hazardous and toxic waste.

Based on the results of a review of the 2022 and 2023 Pesticide Chemical Use Recap documents, field observations and interviews with several farmers, farmers have not used pesticides with the active ingredient paraquat. Some farmers only use herbicides with the active ingredients Glyphosat and Methyl Metsufuron for weed control. This is in accordance with the association's directives, all pesticides used have a registration issued by the government.

	<b>Status: Comply</b>	
--	-----------------------	--



**3.2 Conformity Checklist of Certificate and Trademark Use**

<b>1.</b>	<b>Evidence of permission or approval certificate and trademark from Certification Body which submitted by Client.</b>
<b>ASA-2</b>	Kelompok Tani Karya Bersama does not use RSPO trademark.
	<b>Status: Comply</b>
<b>2.</b>	<b>Implementation of certificate and trademark used by Client comply with size and type (shape) against Guideline of trademark Use</b>
<b>ASA-2</b>	Kelompok Tani Karya Bersama does not use RSPO trademark.
	<b>Status: Comply</b>
<b>3.</b>	<b>Implementation of Certificate and Trademark is not used on product</b>
<b>ASA-2</b>	Kelompok Tani Karya Bersama does not use RSPO trademark.
	<b>Status: Comply</b>
<b>4.</b>	<b>Controlling of Certificate and Trademark, including withdrawing inappropriate trademark.</b>
<b>ASA-2</b>	Kelompok Tani Karya Bersama does not use RSPO trademark.
	<b>Status: Comply</b>

### 3.3. Identification of Findings, Corrective Action, Observations, Opportunity for Improvement and Noteworthy Positive Components.

#### 3.3.1 Identification of Findings, Corrective Actions and Observations at ASA-1 MS-B Assessment

<b>NCR No.</b>	:	<b>2022.01</b>	<b>Issued by</b>	:	<b>Briyogi Shadiwa</b>
<b>Date Issued</b>	:	<b>28 July 2022</b>	<b>Time Limit</b>	:	<b>27 October 2022</b>
<b>NC Grade</b>	:	<b>Major</b>	<b>Date of Closing</b>	:	<b>26 October 2022</b>
<b>Standard Ref. &amp; Requirement</b>	:	<b>B1.1 MS B</b> <b>The ICS is implemented and an annual internal audit of the group is conducted for all group members and all audit findings are resolved.</b>			
<b>Evidence observed (filled by auditor):</b> Farmer groups have not been able to show evidence at the time of the assessment activity that an annual internal audit has been carried out on all members of the farmer group.					
<b>Non-Conformance Description (filled by auditor):</b> The group's annual internal audit has not yet been conducted on all group members (76 members in total).					
<b>Root Cause Analysis (filled by organization audited):</b>  The ICS team does not yet understand the criteria and obligations that must be met (based on RSPO), that an internal audit is carried out on all land belonging to group members.					
<b>Correction (filled by organization audited):</b>  The ICS Team and the Group Manager evaluate performance, and arrange a schedule for carrying out internal audits of group members, at least 1x in 1 year, according to the applicable procedures.					
<b>Corrective Action (filled by organization audited):</b>  KTKB conducts an annual review and evaluation of the internal audit schedule of the group & ICS Team					
<b>Assessor Evaluation and Conclusion (filled by auditor):</b>  <b>Auditor Verification (10 October 2022)</b> The Farmer's Group showed the recording of the Joint Work Internal Audit, but there was still some evidence that needed to be attached, such as: evaluation of the ICS team's performance and the audit implementation plan/program that has been set for the next year.					
<b>Auditor Verification (26 October 2022)</b> The Farmer Group shows evidence of improvement in the form of an audit implementation program in the Internal Audit Schedule document for 2022 – 2023 which contains information on the date of each member's audit. The program was developed by the ICS team leader and approved by the Group Manager as a basis for understanding the implementation of an audit according to RSPO requirements by January 2022.					
Based on objective evidences, nonconformity in this indication has been fulfilled.					
<b>Verified by</b>	:	<b>Briyogi Shadiwa</b>			

<b>NCR No.</b>	:	<b>2022.02</b>	<b>Issued by</b>	:	<b>Erika Lucitawati</b>
<b>Date Issued</b>	:	<b>28 July 2022</b>	<b>Time Limit</b>	:	<b>27 October 2022</b>

NC Grade	:	Major	Date of Closing	:	27 October 2022
Standard Ref. & Requirement	:	4.2 Smallholders provide information on all smallholder plots converted and planted with oil palm after November 2005, through use of the simplified combined HCV-HCS approach for Smallholders (reference 1.1.E, Annex 2).			
<b>Evidence observed</b> <i>(filled by auditor):</i> Based on results of document verification on Data of KTKB in 2022, there are 6 new members added. KTKB has shown Reporting Template for Disclosure of Areas Cleared without Prior HCV Assessment since November 2005 which contained information regarding land plots of six members for scope of land study as many as 23 plots with an area of 48.96 ha. In addition, KTKB has shown Additional HCV Area Assessment Report conducted in April 2022 with study area of 23 plots covering area of 51.19 ha (Calculation based on GIS Application). The results of the HCV assessment in the KTKB farmer's area are 0.05 ha. However, until the ASA-1 assessment is carried out, the report has not yet been sent to the RSPO.					
<b>Non-Conformance Description</b> <i>(filled by auditor):</i> KTKB has not shown evidence of providing information regarding all land plots, especially members of the new group that were converted and planted with oil palm after November 2005 to the RSPO.					
<b>Root Cause Analysis</b> <i>(filled by organization audited):</i> New member is added soon to surveillance audit. KTKB has procedure of New Member Recruitment (Karya Bersama-SOP-ORG-004) to filter of new member to be. In previous assessment period, KTKB has not been established mechanism to give information to RSPO. This has been agreed by KTKB soon to surveillance audit due to management and ICS Team of KTKB are ensuring of group regulation and P&C(s) implementation of new member to be. KTKB is going to established mechanism to give information to RSPO regarding new member.					
<b>Correction</b> <i>(filled by organization audited):</i> Reporting new member added to RSPO membership as well as LUC analysis and other new member register document.					
<b>Corrective Action</b> <i>(filled by organization audited):</i> KTKB has been reviewed SOP and time frame of new member reporting to RSPO in Annual Communication On Process (ACOP) to RSPO. This can be seen in Karya Bersama-SOP-ORG-004-R01, point 5.10 and 5.11.					
<b>Assessor Evaluation and Conclusion</b> <i>(filled by auditor):</i> <b>Auditor Verification (10 October 2022)</b> <ol style="list-style-type: none"><li>Auditor response regarding to root cause analysis and corrective action which still needs response from KTKB.</li><li>Result of communication by email to RSPO regarding to LUCA is shown below:<ol style="list-style-type: none"><li>KTKB sent information regarding addition of 6 new member with area of 48.96 ha to RSPO on 3 August 2022.</li><li>RSPO sent response which stated that RSPO still needs clarification from KTKB on 6 August 2022</li><li>KTKB sent first clarification to disclosure review process to RSPO on 12 August 2022.</li><li>RSPO sent email to ensure farmers amount, plots, and area which includes in disclosure process on 16 August 2022. Farmers amount is 7 farmers (23 plots) with total managed area of 48.96 ha.</li><li>RSPO sent final report of LUCA to KTKB members of 7 farmers (48.96 ha) on 5 September 2022 which stated, "Terlampir hasil final laporan LUCA untuk Kelompok Tani Karya Bersama. Status LUCA kini adalah Pass, dengan Final Conservation Liability 0 ha, dan Environmental Remediation Area 0 ha."</li></ol></li><li>LUC Analysis Verification Result Document Version 1 on 2 September 2022 which is informed that there is addition of managed area of 48.96 ha with Final Conservation Liability 0 ha and Environmental Remediation Area 0 ha.</li></ol> Based on explanation above, result of final report of LUCA to KTKB members of 7 farmers (48.96 ha) showed that LUCA status "Pass", Final Conservation Liability 0 ha, and Environmental Remediation Area 0 ha. But there is still auditor response regarding to root cause analysis and corrective action which still needs response from KTKB. Therefore, this nonconformity has not been fulfilled.					
<b>Auditor Verification (27 October 2022)</b> KTKB has been established root cause analysis, correction, and corrective action. Besides, auditor response regarding to root cause					

analysis and corrective action in previous verification has been responded by KTKB. Based on document verification, KTKB has also shown documents which have been shown in previous verification. Therefore, nonconformity in this indication has been fulfilled.

**Verified by** : Erika Lucitawati

### 3.3.2 Identification of Findings, Corrective Actions and Observations at ASA-2 MS-B Assessment

<b>NCR No.</b>	:	2023. 1	<b>Issued by</b>	:	
<b>Date Issued</b>	:	03 August 2023	<b>Time Limit</b>	:	
<b>NC Grade</b>	:		<b>Date of Closing</b>	:	
<b>Standard Ref. &amp; Requirement</b>	:				
<b>Evidence observed</b> (filled by auditor):					
<b>Non-Conformance Description</b> (filled by auditor):					
<b><i>The Auditor Team did not find any non-conformity when ASA 2 was implemented</i></b>					
<b>Root Cause Analysis</b> (filled by organization audited):					
<b>Correction</b> (filled by organization audited):					
<b>Corrective Action</b> (filled by organization audited):					
<b>Assessor Evaluation and Conclusion</b> (filled by auditor):					
<b>Follow up on next audit</b> (filled by auditor):					
<b>Verified by</b>	:				
<b>Diverifikasi oleh</b>	:				

**3.3.3. Opportunity for Improvement**

No	Ref. Std.	Description																																															
1	B.1.1	<p><b>MS-B:</b> <b>The ICS is implemented and an annual internal audit of the group is conducted for all group members and all audit findings are resolved.</b></p> <p>As a guide in implementing internal audits, the Kelompok Tani Karya Bersama has an Internal Audit SOP (Karya Bersama-SOP-ORG-003) dated December 20 2019 which explains that internal audit activities are carried out at least once a year by personnel who are not directly related/responsible for the schedule audit of days and/or activities in the audited area. During the audit process, evidence can be shown that audit activities have been carried out in March, April, May June 2023. The results of auditor verification related to internal audit activities show that internal audit activities are still limited to what is lacking and needs to be completed and have not systematically informed what is needed. become a major concern such as risk factors, potential non-compliance or repeated errors.</p> <p>In this regard, the Kelompok Tanin Karya Bersama is encouraged to develop systematic audit methods in each section, for example ICS compliance, agronomy compliance in the field, employment and OHS aspects, environmental aspects, legal aspects, documenting records, housing aspects including facilities. and infrastructure and other matters regulated in the RSPO principles and criteria for Independent Smallholders.</p>																																															
2	D.2.1	<p><b>MS-B:</b> <b>The group manager maintains annual production data and sales of certified volumes through physical or Book and Claim for the group based on actual receipts and sales for all members and 100% of all certified volumes.</b></p> <p>PT Mutuagung Lestari has determined projections for RSPO certified TBS, CSPO, CSPKO and CSPKE for the licensing period 16 November 2022 – 02 September 2023 with the following details:</p> <p>Table 1: Production Projections</p> <table><tr><th>Product</th><th></th><th>Quantity (MT)</th></tr><tr><td>FFB</td><td>:</td><td>7.303</td></tr><tr><td>CSPO</td><td>:</td><td>1.460</td></tr><tr><td>CSPKE</td><td>:</td><td>200</td></tr><tr><td>CSPKO</td><td>:</td><td>164</td></tr></table> <p>Then, the Karya Bersama Farmers Group has initially sold certified products via book and claim via palm trace with the following details:</p> <p>Table 2: Sales of certified products</p> <table><tr><th>Product</th><th></th><th>Quantity (MT)</th></tr><tr><td>FFB</td><td>:</td><td>-</td></tr><tr><td>CSPO</td><td>:</td><td>-</td></tr><tr><td>CSPKO</td><td>:</td><td>160</td></tr></table> <p>Meanwhile, the certified production for the period July 2022 – June 2023 is:</p> <p>Table 3: Actual production</p> <table><tr><th>Product</th><th></th><th>Quantity (MT)</th><th></th></tr><tr><td>FFB</td><td>:</td><td>6.695,46</td><td></td></tr><tr><td>CSPO</td><td>:</td><td>1.339,09</td><td></td></tr><tr><td>CSPKE</td><td>:</td><td>184,13</td><td></td></tr><tr><td>CSPKO</td><td>:</td><td>150,65</td><td></td></tr></table> <p>So based on the data above, between the actual production (table 3) and the certified products sold (table 2) there is a difference of:</p>	Product		Quantity (MT)	FFB	:	7.303	CSPO	:	1.460	CSPKE	:	200	CSPKO	:	164	Product		Quantity (MT)	FFB	:	-	CSPO	:	-	CSPKO	:	160	Product		Quantity (MT)		FFB	:	6.695,46		CSPO	:	1.339,09		CSPKE	:	184,13		CSPKO	:	150,65	
Product		Quantity (MT)																																															
FFB	:	7.303																																															
CSPO	:	1.460																																															
CSPKE	:	200																																															
CSPKO	:	164																																															
Product		Quantity (MT)																																															
FFB	:	-																																															
CSPO	:	-																																															
CSPKO	:	160																																															
Product		Quantity (MT)																																															
FFB	:	6.695,46																																															
CSPO	:	1.339,09																																															
CSPKE	:	184,13																																															
CSPKO	:	150,65																																															

		<p>Table 4: Sales Difference Data</p> <table><tr><th>Product</th><th></th><th>Quantity (MT)</th></tr><tr><td>CSPKO</td><td>:</td><td>(-9,35)</td></tr></table> <p>Referring to the data above, there is an excess of sales between the products produced and those sold by book and claim. In this regard, based on the results of calculations of production data estimates taking into account trends in production data, the amount of production up to August 2023 exceeds the products that have been sold with the following details:</p> <p>Table 5 : Production Projection</p> <table><tr><th>Product</th><th></th><th>Quantity (MT)</th></tr><tr><td>FFB</td><td>:</td><td>7.813,34</td></tr><tr><td>CSPO</td><td>:</td><td>1.562,67</td></tr><tr><td>CSPKE</td><td>:</td><td>214,87</td></tr><tr><td>CSPKO</td><td>:</td><td>175,80</td></tr></table> <p>In this regard, associations are encouraged to develop monitoring mechanisms including sales models/procedures to prevent over-selling of the certified products produced. This is an opportunity for improvement.</p>	Product		Quantity (MT)	CSPKO	:	(-9,35)	Product		Quantity (MT)	FFB	:	7.813,34	CSPO	:	1.562,67	CSPKE	:	214,87	CSPKO	:	175,80
Product		Quantity (MT)																					
CSPKO	:	(-9,35)																					
Product		Quantity (MT)																					
FFB	:	7.813,34																					
CSPO	:	1.562,67																					
CSPKE	:	214,87																					
CSPKO	:	175,80																					
3	2.1	<p><b>MS-A:</b> <b>Smallholders can demonstrate legal ownership or native and/or customary rights to use the land or demonstrate that they are in the process of legalisation of that right.</b></p> <p>In the previous standard (RSPO Independent Smallholder Standard, 6 November 2019) it was stated that the total land ownership of individuals in Indonesia is no more than 25 Ha, which is the accumulation of total land ownership wherever the location is located. Furthermore, in the RSPO Independent Smallholder Standard Indonesia National Interpretation for the Production of Sustainable Palm Oil 2020, endorsed by the RSPO Board of Governors on 14 February 2022, it is stated that the maximum area of individual ownership is 20 Ha and the total area is an accumulation of total ownership. land wherever the location is located.</p> <p>The current situation found that there were 2 farmers who owned land with a total area of more than 20 ha, where when they first joined as members of the group this was still permitted/in accordance with the provisions of the RSPO Independent Smallholder Standard, 6 November 2019.</p> <p>In this regard, the Karya Bersama Farmers Group is encouraged to adjust the maximum size of members in accordance with the RSPO Independent Smallholder Standard, Indonesia National Interpretation for the Production of Sustainable Palm Oil 2020, endorsed by the RSPO Board of Governors on 14 February 2022.</p>																					





**3.3.4. Noteworthy Positive Components**

No	Description
1	Commitment to implement the principles of sustainable oil palm plantation management.
2	Presentation of documents is quite good

**3.4 Summary of Arising Issues from Public and Auditor Verification.**

Public Issues (Institution/ NGO/Community)	Auditor Verification
<p><b>Agung Mulya Village</b> <b>Head of Village</b> <b>01 August 2023</b></p> <ul style="list-style-type: none"> <li>• All smallholder lands are also located in other use areas.</li> <li>• There is no use of fire for land clearing, waste management, and pest management.</li> <li>• There is no land fire occurred in KTKB land in 2022 – 2023.</li> <li>• There is also no indication of environmental pollution due to KTKB operational activity.</li> <li>• Land rights owned by farmers in the form of ownership certificates (SHM) and land certificates (SKT)</li> <li>• There is no issue of land disputes</li> <li>• Land was acquired by purchasing from the previous owner.</li> <li>• Every time there is a land purchase transaction, it is always witnessed by the village head</li> </ul>	<p>There's no negative issue need to be further clarification.</p>

4.0	<b>CERTIFIED ORGANISATION'S ACKNOWLEDGEMENT OF INTERNAL RESPONSIBILITY</b>
4.1	<b>Formal Sign-off of Assessment Findings</b>
	<p>Hereunder sign by management representative from inspected company to acknowledge a field assessment and agree for all content explained in this assessment report, included of non-compliance findings.</p> <p style="text-align: center;">Signed on behalf of:</p> <div style="display: flex; justify-content: space-around; align-items: flex-end;"> <div style="text-align: center;"> <p>RSPO Member Management Representative</p>  <p><b><u>Yoyok Kuswoyo</u></b> 08 September 2023</p> </div> <div style="text-align: center;"> <p>Mutuagung Lestari Lead Auditor</p>  <p><b><u>Afiffuddin</u></b> 08 September 2023</p> </div> </div>

**Appendix 1. List of Stakeholder Contacted in the RSPO Certification Process**

No	Institution/ NGO/ Community	Address	Phone/ Email	Form of Communication	Date of Contact	Response	
						Yes	No
1	Plantation Agency	Kotawaringin Timur District	-	Direct Interview	1 August 2023		√
2	Investment Service and One-Stop Integrated Services	Kotawaringin Timur District	-	Direct Interview	1 August 2023		√
3	Agung Mulya Village	Kotawaringin Timur District	-	Direct Interview	1 August 2023	√	
4	Ngudi Makmur Smallholder Group	Kotawaringin Timur District	-	Direct Interview	1 August 2023	√	
5	Karya Bersama Smallholder Group	Kotawaringin Timur District	-	Direct Interview	1 August 2023	√	
6	WWF	Jakarta	Email	Questionnaire via Email	11 July 2022		√
7	Sawit Watch	Jakarta	Email	Questionnaire via Email	11 July 2022		√
8	WALHI	Jakarta	Email	Questionnaire via Email	11 July 2022		√
9	AMAN	Jakarta	Email	Questionnaire via Email	11 July 2022		√

**Appendix 2. Assessment Program**

DATE	31 July – 03 August 2023	
PROGRAM (WIB)	CLAUSES TO BE AUDITED	AUDITOR
<b>Monday, 31 July 2023</b>		
06:00 – 07:30	<b>Jakarta → Surabaya (Batik Air ID-6308)</b>	AFF/MAY/BEN
09:00 – 10:15	<b>Surabaya → Palangkaraya (Lion Air JT-682)</b>	
10:30 – 16:00	<b>Palangkaraya → Kelompok Tani Karya Bersama</b>	
16:00 – 17:00	<b>Opening meeting</b> <ul style="list-style-type: none"> <li>Auditee Speech (Introduction of PIC, Profile of Certified Management Unit)</li> <li>Auditor Team Speech (Introduction, Audit Objective, Audit Scope, Audit Plan Discussion, Determine of Audit Sample, Transparency and Confidentiality Clarification)</li> </ul>	AFF/MAY/BEN
<b>Tuesday, 01 August 2023</b>		
08:00 – 12:00	<b>Field Observation to Smallholders</b> Aspect to be verified: <ul style="list-style-type: none"> <li>Implementation of Legal Aspect</li> <li>Implementation of Agronomy Aspect</li> <li>Implementation of Environmental, Conservation and Waste Management Aspect</li> <li>Implementation of Occupational Health and Safety</li> <li>Implementation of Employment Aspect</li> </ul>	AFF/MAY/BEN
12:00 – 14:00	<b>Break</b>	AFF/MAY/BEN
14:00 – 16:30	<ul style="list-style-type: none"> <li>Continue Field Observation</li> <li>Document review and completing audit checklist</li> <li>Verification of stakeholder consultation result and field visit</li> </ul>	
16:30 – 17:00	<b>Presentation of Daily Progress</b>	AFF/MAY/BEN
<b>Wednesday, 02 August 2023</b>		
08:00 – 12:00	<ul style="list-style-type: none"> <li>Continue Field Observation</li> <li>Document review and completing audit checklist</li> <li>Verification of stakeholder consultation result and field visit</li> </ul>	AFF/MAY/BEN
12:00 – 14:00	<b>Break</b>	AFF/MAY/BEN
14:00 – 16:00	<ul style="list-style-type: none"> <li>Continue Field Observation</li> <li>Document review and completing audit checklist</li> <li>Verification of stakeholder consultation result and field visit</li> </ul>	AFF/MAY/BEN
16:00 – 17:00	<b>Presentation of Daily Progress</b>	AFF/MAY/BEN
<b>Thursday, 03 August 2023</b>		
08:00 – 09:00	<b>Closing Meeting</b> <ul style="list-style-type: none"> <li>Presentation of audit findings (Noteworthy Positive Component, Non Conformities, OFI, Timelie of CAR's, Conclusion)</li> <li>Comments, Responses and Questions</li> </ul>	AFF/MAY/BEN
09:00 – 16:00	<b>Kelompok Tani Karya Bersama → Palangkaraya</b>	AFF/MAY/BEN
16:30 – 18:15	<b>Palangkaraya → Jakarta (Garuda Indonesia GA-553)</b>	AFF/MAY/BEN

**Appendix 3. Smallholder Data**

No.	Smallholder Name	Location		Coordinate		Area (Ha)		Actual FFB production (MT/Year)	Yield (MT/Ha/ Year)	Projection FFB Production (MT/Year)	Yield Projection (MT/Ha/ Year)	Date of Joining	Date of Leaving
				Latitude (S)	Longitude (E)	Total Area	Production Area						
1	Yoyok Kuswoyo	Telaga Antang	Kalimantan Tengah	1° 47' 3" S	112° 38' 15" E	1.61	1.61	36.40	22.67	38,22	23,80	11-Jun-20	
2	Yoyok Kuswoyo	Telaga Antang	Kalimantan Tengah	1° 47' 1" S	112° 38' 39" E	2.01	2.01	45.56	22.67	47,84	23,80	11-Jun-20	
3	Yoyok Kuswoyo	Telaga Antang	Kalimantan Tengah	1° 47' 2" S	112° 38' 10" E	2.00	2.00	45.33	22.67	47,60	23,80	11-Jun-20	
4	Yoyok Kuswoyo	Telaga Antang	Kalimantan Tengah	1° 47' 2" S	112° 38' 6" E	1.53	1.53	34.68	22.67	36,41	23,80	11-Jun-20	
5	Yoyok Kuswoyo	Telaga Antang	Kalimantan Tengah	1° 47' 8" S	112° 38' 36" E	0.80	0.80	18.13	22.67	19,04	23,80	11-Jun-20	
6	Yoyok Kuswoyo	Telaga Antang	Kalimantan Tengah	1° 47' 3" S	112° 38' 12" E	2.00	2.00	45.33	22.67	47,60	23,80	11-Jun-20	
7	Yoyok Kuswoyo	Telaga Antang	Kalimantan Tengah	1° 47' 2" S	112° 38' 11" E	2.11	2.11	47.92	22.67	50,31	23,80	11-Jun-20	
8	Yoyok Kuswoyo	Telaga Antang	Kalimantan Tengah	1° 47' 1" S	112° 38' 34" E	2.00	2.00	45.33	22.67	47,60	23,80	11-Jun-20	
9	Yoyok Kuswoyo	Telaga Antang	Kalimantan Tengah	1° 47' 3" S	112° 38' 18" E	0.75	0.75	18.47	24.62	19,39	25,85	11-Jun-20	
10	Yoyok Kuswoyo	Telaga Antang	Kalimantan Tengah	1° 47' 2" S	112° 38' 8" E	2.00	2.00	45.33	22.67	47,60	23,80	11-Jun-20	
11	Yoyok Kuswoyo	Telaga Antang	Kalimantan Tengah	1° 47' 1" S	112° 38' 36" E	1.30	1.30	29.49	22.67	30,96	23,80	11-Jun-20	
12	Efda Wardayani	Telaga Antang	Kalimantan Tengah	1° 47' 2" S	112° 38' 4" E	0.90	0.90	20.37	22.67	21,39	23,80	11-Jun-20	
13	Efda Wardayani	Telaga Antang	Kalimantan Tengah	1° 47' 2" S	112° 38' 49" E	1.85	1.85	41.89	22.67	43,98	23,80	11-Jun-20	
14	Setyo Hartono	Telaga Antang	Kalimantan Tengah	1° 45' 5" S	112° 36' 45" E	2.00	2.00	44.06	21.99	46,27	23,09	11-Jun-20	
15	Setyo Hartono	Telaga Antang	Kalimantan Tengah	1° 46' 2" S	112° 36' 50" E	1.53	1.53	33.65	21.99	35,33	23,09	11-Jun-20	
16	Setyo Hartono	Telaga Antang	Kalimantan Tengah	1° 45' 5" S	112° 36' 47" E	1.46	1.46	32.00	21.99	33,60	23,09	11-Jun-20	
17	Setyo Hartono	Telaga Antang	Kalimantan Tengah	1° 45' 5" S	112° 36' 42" E	2.00	2.00	43.99	21.99	46,19	23,09	11-Jun-20	
18	Setyo Hartono	Telaga Antang	Kalimantan Tengah	1° 45' 4" S	112° 38' 57" E	2.92	2.92	64.24	21.99	67,46	23,09	11-Jun-20	
19	Setyo Hartono	Telaga Antang	Kalimantan Tengah	1° 46' 3" S	112° 36' 33" E	2.00	2.00	43.99	21.99	46,19	23,09	11-Jun-20	
20	Setyo Hartono	Telaga Antang	Kalimantan Tengah	1° 46' 3" S	112° 38' 50" E	1.00	1.00	23.99	23.99	25,19	25,19	11-Jun-20	
21	Mandoyo	Telaga Antang	Kalimantan Tengah	1° 43' 4" S	112° 39' 45" E	2.00	2.00	35.11	17.55	36,86	18,43	11-Jun-20	
22	Mandoyo	Telaga Antang	Kalimantan Tengah	1° 43' 4" S	112° 39' 41" E	1.71	1.71	32.67	19.10	34,30	20,06	11-Jun-20	
23	Mandoyo	Telaga Antang	Kalimantan Tengah	1° 43' 3" S	112° 40' 11" E	1.50	1.50	28.65	19.10	30,08	20,05	11-Jun-20	
24	Mandoyo	Telaga Antang	Kalimantan Tengah	1° 43' 1" S	112° 39' 31" E	1.80	1.80	31.60	17.55	33,17	18,43	11-Jun-20	



No.	Smallholder Name	Location		Coordinate		Area (Ha)		Actual FFB production (MT/Year)	Yield (MT/Ha/ Year)	Projection FFB Production (MT/Year)	Yield Projection (MT/Ha/ Year)	Date of Joining	Date of Leaving
				Latitude (S)	Longitude (E)	Total Area	Production Area						
25	Mandoyo	Telaga Antang	Kalimantan Tengah	1° 43' 4" S	112° 39' 54" E	2.00	2.00	35.11	17.55	36,86	18,43	11-Jun-20	
26	Mandoyo	Telaga Antang	Kalimantan Tengah	1° 43' 3" S	112° 39' 46" E	2.00	2.00	35.11	17.55	36,86	18,43	11-Jun-20	
27	Mandoyo	Telaga Antang	Kalimantan Tengah	1° 43' 4" S	112° 39' 38" E	2.00	2.00	35.11	17.55	36,86	18,43	11-Jun-20	
28	Mandoyo	Telaga Antang	Kalimantan Tengah	1° 43' 4" S	112° 39' 49" E	2.00	2.00	35.11	17.55	36,86	18,43	11-Jun-20	
29	Mandoyo	Telaga Antang	Kalimantan Tengah	1° 43' 4" S	112° 40' 9" E	3.10	3.10	54.41	17.55	57,13	18,43	11-Jun-20	
30	Mandoyo	Telaga Antang	Kalimantan Tengah	1° 43' 2" S	112° 39' 33" E	1.17	1.17	19.82	17.01	20,81	17,87	11-Jun-20	
31	Mandoyo	Telaga Antang	Kalimantan Tengah	1° 43' 2" S	112° 39' 41" E	1.30	1.30	23.07	17.75	24,23	18,64	11-Jun-20	
32	Yayuk Yuliana	Telaga Antang	Kalimantan Tengah	1° 47' 3" S	112° 38' 18" E	0.75	0.75	17.09	22.78	17,94	23,92	11-Jun-20	
33	Yayuk Yuliana	Telaga Antang	Kalimantan Tengah	1° 46' 5" S	112° 38' 39" E	1.33	1.33	25.38	19.05	26,65	20,01	11-Jun-20	
34	Yayuk Yuliana	Telaga Antang	Kalimantan Tengah	1° 46' 5" S	112° 37' 57" E	1.00	1.00	19.05	19.05	20,01	20,01	11-Jun-20	
35	Yayuk Yuliana	Telaga Antang	Kalimantan Tengah	1° 46' 5" S	112° 38' 35" E	2.06	2.06	33.77	16.38	35,46	17,20	11-Jun-20	
36	Yayuk Yuliana	Telaga Antang	Kalimantan Tengah	1° 47' 2" S	112° 38' 16" E	1.50	1.50	24.58	16.38	25,81	17,20	11-Jun-20	
37	Yayuk Yuliana	Telaga Antang	Kalimantan Tengah	1° 47' 2" S	112° 38' 16" E	2.01	2.01	32.92	16.38	34,56	17,20	11-Jun-20	
38	Yayuk Yuliana	Telaga Antang	Kalimantan Tengah	1° 47' 3" S	112° 38' 14" E	1.40	1.40	26.67	19.05	28,01	20,01	11-Jun-20	
39	Yayuk Yuliana	Telaga Antang	Kalimantan Tengah	1° 46' 5" S	112° 37' 57" E	1.00	1.00	23.27	23.27	24,43	24,43	11-Jun-20	
40	Yayuk Yuliana	Telaga Antang	Kalimantan Tengah	1° 46' 4" S	112° 37' 27" E	1.00	1.00	23.27	23.27	24,43	24,43	11-Jun-20	
41	Nunik Hujani Rahayu	Telaga Antang	Kalimantan Tengah	1° 45' 2" S	112° 37' 8" E	2.00	2.00	35.55	17.77	37,33	18,66	11-Jun-20	
42	Nunik Hujani Rahayu	Telaga Antang	Kalimantan Tengah	1° 45' 3" S	112° 37' 9" E	2.00	2.00	36.47	18.24	38,29	19,15	11-Jun-20	
43	Nunik Hujani Rahayu	Telaga Antang	Kalimantan Tengah	1° 45' 2" S	112° 37' 12" E	1.02	1.02	19.69	19.30	20,67	20,27	11-Jun-20	
44	Suyitno	Telaga Antang	Kalimantan Tengah	1° 45' 3" S	112° 38' 18" E	2.00	2.00	45.09	22.54	47,34	23,67	11-Jun-20	
45	Suyitno	Telaga Antang	Kalimantan Tengah	1° 45' 0" S	112° 38' 20" E	1.00	1.00	22.54	22.54	23,67	23,67	11-Jun-20	
46	Suyitno	Telaga Antang	Kalimantan Tengah	1° 46' 1" S	112° 38' 26" E	1.00	1.00	22.54	22.54	23,67	23,67	11-Jun-20	
47	Suyitno	Telaga Antang	Kalimantan Tengah	1° 46' 7" S	112° 38' 6" E	1.00	1.00	22.54	22.54	23,67	23,67	11-Jun-20	
48	Suyitno	Telaga Antang	Kalimantan Tengah	1° 46' 1" S	112° 38' 20" E	1.00	1.00	22.54	22.54	23,67	23,67	11-Jun-20	
49	Suyitno	Telaga Antang	Kalimantan Tengah	1° 46' 1" S	112° 38' 24" E	1.00	1.00	22.54	22.54	23,67	23,67	11-Jun-20	
50	Suyitno	Telaga Antang	Kalimantan Tengah	1° 46' 2" S	112° 38' 18" E	1.00	1.00	22.54	22.54	23,67	23,67	11-Jun-20	

No.	Smallholder Name	Location		Coordinate		Area (Ha)		Actual FFB production (MT/Year)	Yield (MT/Ha/ Year)	Projection FFB Production (MT/Year)	Yield Projection (MT/Ha/ Year)	Date of Joining	Date of Leaving
				Latitude (S)	Longitude (E)	Total Area	Production Area						
51	Sugianto	Telaga Antang	Kalimantan Tengah	1° 46' 2" S	112° 38' 49" E	1.00	1.00	23.06	23.06	24,21	24,21	11-Jun-20	
52	Sugianto	Telaga Antang	Kalimantan Tengah	1° 46' 1" S	112° 38' 22" E	1.00	1.00	23.06	23.06	24,21	24,21	11-Jun-20	
53	Sugianto	Telaga Antang	Kalimantan Tengah	1° 46' 1" S	112° 38' 17" E	1.00	1.00	23.06	23.06	24,21	24,21	11-Jun-20	
54	Sugianto	Telaga Antang	Kalimantan Tengah	1° 46' 2" S	112° 38' 23" E	1.00	1.00	23.06	23.06	24,21	24,21	11-Jun-20	
55	Sutrisno	Telaga Antang	Kalimantan Tengah	1° 46' 3" S	112° 38' 43" E	1.00	1.00	24.99	24.99	26,23	26,23	11-Jun-20	
56	Sutrisno	Telaga Antang	Kalimantan Tengah	1° 46' 2" S	112° 38' 45" E	1.00	1.00	24.99	24.99	26,23	26,23	11-Jun-20	
57	Sutrisno	Telaga Antang	Kalimantan Tengah	1° 46' 1" S	112° 38' 36" E	1.00	1.00	24.99	24.99	26,23	26,23	11-Jun-20	
58	Sutrisno	Telaga Antang	Kalimantan Tengah	1° 46' 1" S	112° 38' 19" E	1.00	1.00	24.99	24.99	26,23	26,23	11-Jun-20	
59	Sardi	Telaga Antang	Kalimantan Tengah	1° 46' 2" S	112° 38' 22" E	1.00	1.00	24.25	24.25	25,46	25,46	11-Jun-20	
60	Sardi	Telaga Antang	Kalimantan Tengah	1° 46' 3" S	112° 38' 44" E	1.00	1.00	24.25	24.25	25,46	25,46	11-Jun-20	
61	Marmi	Telaga Antang	Kalimantan Tengah	1° 46' 3" S	112° 38' 8" E	1.00	1.00	20.53	20.53	21,56	21,56	11-Jun-20	
62	Marmi	Telaga Antang	Kalimantan Tengah	1° 46' 2" S	112° 38' 6" E	1.00	1.00	23.05	23.05	24,20	24,20	11-Jun-20	
63	Marmi	Telaga Antang	Kalimantan Tengah	1° 46' 2" S	112° 38' 9" E	1.00	1.00	23.05	23.05	24,20	24,20	11-Jun-20	
64	Paiman P	Telaga Antang	Kalimantan Tengah	1° 46' 1" S	112° 36' 28" E	1.00	1.00	25.06	25.06	26,32	26,32	11-Jun-20	
65	Paiman P	Telaga Antang	Kalimantan Tengah	1° 46' 1" S	112° 36' 28" E	1.00	1.00	25.06	25.06	26,32	26,32	11-Jun-20	
66	Paiman P	Telaga Antang	Kalimantan Tengah	1° 46' 1" S	112° 37' 46" E	1.17	1.17	29.23	25.06	30,69	26,32	11-Jun-20	
67	Paiman P	Telaga Antang	Kalimantan Tengah	1° 46' 3" S	112° 37' 47" E	0.80	0.80	20.05	25.06	21,05	26,32	11-Jun-20	
68	Paiman P	Telaga Antang	Kalimantan Tengah	1° 46' 1" S	112° 38' 40" E	1.00	1.00	25.06	25.06	26,32	26,32	11-Jun-20	
69	Paiman P	Telaga Antang	Kalimantan Tengah	1° 46' 1" S	112° 37' 59" E	1.00	1.00	25.06	25.06	26,32	26,32	11-Jun-20	
70	Paiman P	Telaga Antang	Kalimantan Tengah	1° 46' 1" S	112° 36' 28" E	1.00	1.00	25.06	25.06	26,32	26,32	11-Jun-20	
71	Paiman P	Telaga Antang	Kalimantan Tengah	1° 46' 1" S	112° 38' 0" E	1.35	1.35	33.80	25.06	35,49	26,32	11-Jun-20	
72	Paiman P	Telaga Antang	Kalimantan Tengah	1° 46' 0" S	112° 37' 42" E	1.74	1.74	43.55	25.06	45,72	26,32	11-Jun-20	
73	Lamirin	Telaga Antang	Kalimantan Tengah	1° 45' 4" S	112° 36' 44" E	1.50	1.50	40.42	26.95	42,44	28,29	11-Jun-20	
74	Lamirin	Telaga Antang	Kalimantan Tengah	1° 45' 5" S	112° 36' 42" E	0.20	0.20	5.13	25.46	5,39	26,73	11-Jun-20	
75	Lamirin	Telaga Antang	Kalimantan Tengah	1° 45' 5" S	112° 36' 43" E	0.23	0.23	5.85	25.22	6,14	26,48	11-Jun-20	
76	Lamirin	Telaga Antang	Kalimantan Tengah	1° 45' 4" S	112° 36' 45" E	1.00	1.00	25.95	25.95	27,24	27,24	11-Jun-20	

No.	Smallholder Name	Location		Coordinate		Area (Ha)		Actual FFB production (MT/Year)	Yield (MT/Ha/ Year)	Projection FFB Production (MT/Year)	Yield Projection (MT/Ha/ Year)	Date of Joining	Date of Leaving
				Latitude (S)	Longitude (E)	Total Area	Production Area						
77	Lamirin	Telaga Antang	Kalimantan Tengah	1° 47' 1" S	112° 38' 26" E	1.00	1.00	25.95	25.95	27,24	27,24	11-Jun-20	
78	Lamirin	Telaga Antang	Kalimantan Tengah	1° 47' 1" S	112° 38' 26" E	0.90	0.90	23.25	25.83	24,41	27,13	11-Jun-20	
79	Lamirin	Telaga Antang	Kalimantan Tengah	1° 47' 1" S	112° 38' 26" E	0.90	0.90	23.25	25.83	24,41	27,13	11-Jun-20	
80	Lamirin	Telaga Antang	Kalimantan Tengah	1° 46' 4" S	112° 37' 49" E	1.00	1.00	25.95	25.95	27,24	27,24	11-Jun-20	
81	Lamirin	Telaga Antang	Kalimantan Tengah	1° 46' 4" S	112° 38' 3" E	1.00	1.00	25.95	25.95	27,24	27,24	11-Jun-20	
82	Estu Wulan Ningsih	Telaga Antang	Kalimantan Tengah	1° 43' 3" S	112° 39' 35" E	1.75	1.75	29.29	16.74	30,75	17,57	11-Jun-20	
83	Estu Wulan Ningsih	Telaga Antang	Kalimantan Tengah	1° 43' 2" S	112° 39' 41" E	2.00	2.00	33.49	16.74	35,16	17,57	11-Jun-20	
84	Estu Wulan Ningsih	Telaga Antang	Kalimantan Tengah	1° 43' 3" S	112° 39' 49" E	2.65	2.65	44.35	16.74	46,57	17,57	11-Jun-20	
85	Estu Wulan Ningsih	Telaga Antang	Kalimantan Tengah	1° 43' 4" S	112° 40' 10" E	1.02	1.02	17.06	16.74	17,91	17,57	11-Jun-20	
86	Estu Wulan Ningsih	Telaga Antang	Kalimantan Tengah	1° 43' 4" S	112° 40' 10" E	1.02	1.02	17.06	16.74	17,91	17,57	11-Jun-20	
87	Estu Wulan Ningsih	Telaga Antang	Kalimantan Tengah	1° 43' 4" S	112° 40' 13" E	2.00	2.00	33.47	16.74	35,15	17,57	11-Jun-20	
88	Jumadi	Telaga Antang	Kalimantan Tengah	1° 45' 5" S	112° 37' 16" E	0.75	0.75	18.33	24.44	19,24	25,66	11-Jun-20	
89	Jumadi	Telaga Antang	Kalimantan Tengah	1° 45' 3" S	112° 37' 25" E	0.98	0.98	22.07	22.52	23,17	23,64	11-Jun-20	
90	Jumadi	Telaga Antang	Kalimantan Tengah	1° 45' 3" S	112° 37' 23" E	1.00	1.00	22.52	22.52	23,64	23,64	11-Jun-20	
91	Pumomo	Telaga Antang	Kalimantan Tengah	1° 44' 3" S	112° 37' 29" E	0.98	0.98	21.75	22.20	22,84	23,31	11-Jun-20	
92	Pumomo	Telaga Antang	Kalimantan Tengah	1° 47' 3" S	112° 33' 50" E	1.18	1.18	25.67	21.76	26,96	22,85	11-Jun-20	
93	Pumomo	Telaga Antang	Kalimantan Tengah	1° 46' 4" S	112° 38' 21" E	1.22	1.22	26.54	21.76	27,87	22,85	11-Jun-20	
94	Titin - Pumomo	Telaga Antang	Kalimantan Tengah	1° 47' 2" S	112° 33' 30" E	1.00	1.00	21.76	21.76	22,85	22,85	11-Jun-20	
95	Subandi	Telaga Antang	Kalimantan Tengah	1° 44' 2" S	112° 37' 38" E	1.03	1.03	23.88	23.19	25,08	24,35	11-Jun-20	
96	Subandi	Telaga Antang	Kalimantan Tengah	1° 44' 4" S	112° 37' 26" E	1.30	1.30	31.39	24.14	32,96	25,35	11-Jun-20	
97	Samiun	Telaga Antang	Kalimantan Tengah	1° 44' 2" S	112° 38' 29" E	0.85	0.85	19.48	22.82	20,45	23,96	11-Jun-20	
98	Samiun	Telaga Antang	Kalimantan Tengah	1° 45' 1" S	112° 37' 25" E	1.00	1.00	23.16	23.16	24,32	24,32	11-Jun-20	
99	Joko Siswanto	Telaga Antang	Kalimantan Tengah	1° 44' 2" S	112° 38' 30" E	1.20	1.20	24.20	20.17	25,41	21,18	11-Jun-20	
100	Joko Siswanto	Telaga Antang	Kalimantan Tengah	1° 45' 9" S	112° 37' 31" E	0.82	0.82	17.05	20.80	17,91	21,84	11-Jun-20	
101	Margono	Telaga Antang	Kalimantan Tengah	1° 44' 3" S	112° 38' 37" E	2.00	2.00	38.56	19.28	40,49	20,24	11-Jun-20	
102	Sugiyanto	Telaga Antang	Kalimantan Tengah	1° 45' 1" S	112° 38' 32" E	1.41	1.41	27.66	19.66	29,04	20,65	11-Jun-20	

No.	Smallholder Name	Location		Coordinate		Area (Ha)		Actual FFB production (MT/Year)	Yield (MT/Ha/ Year)	Projection FFB Production (MT/Year)	Yield Projection (MT/Ha/ Year)	Date of Joining	Date of Leaving
				Latitude (S)	Longitude (E)	Total Area	Production Area						
103	Amri Mustaqim	Telaga Antang	Kalimantan Tengah	1° 47' 1" S	112° 38' 56" E	1.00	1.00	23.01	23.01	24,16	24,16	11-Jun-20	
104	Amri Mustaqim	Telaga Antang	Kalimantan Tengah	1° 47' 1" S	112° 38' 57" E	2.00	2.00	46.01	23.01	48,31	24,16	11-Jun-20	
105	Parlan	Telaga Antang	Kalimantan Tengah	1° 47' 1" S	112° 38' 4" E	1.11	1.11	23.17	20.93	24,33	21,97	11-Jun-20	
106	Parlan	Telaga Antang	Kalimantan Tengah	1° 47' 2" S	112° 38' 31" E	1.63	1.63	31.08	19.12	32,63	20,08	11-Jun-20	
107	Suyanto	Telaga Antang	Kalimantan Tengah	1° 47' 2" S	112° 38' 27" E	1.00	1.00	18.78	18.78	19,72	19,72	11-Jun-20	
108	Suyanto	Telaga Antang	Kalimantan Tengah	1° 47' 2" S	112° 38' 20" E	1.00	1.00	18.84	18.84	19,78	19,78	11-Jun-20	
109	Suyanto	Telaga Antang	Kalimantan Tengah	1° 47' 2" S	112° 38' 20" E	0.70	0.70	13.87	19.81	14,56	20,81	11-Jun-20	
110	Suyanto	Telaga Antang	Kalimantan Tengah	1° 47' 2" S	112° 38' 30" E	1.71	1.71	31.98	18.70	33,58	19,64	11-Jun-20	
111	Suyanto	Telaga Antang	Kalimantan Tengah	1° 47' 2" S	112° 38' 24" E	2.00	2.00	37.35	18.67	39,22	19,60	11-Jun-20	
112	Sulaeman	Telaga Antang	Kalimantan Tengah	1° 47' 2" S	112° 38' 28" E	1.00	1.00	22.47	22.47	23,59	23,59	11-Jun-20	
113	Denny Febriyadi	Telaga Antang	Kalimantan Tengah	1° 47' 2" S	112° 38' 25" E	2.00	2.00	41.68	20.84	43,76	21,88	11-Jun-20	
114	Denny Febriyadi	Telaga Antang	Kalimantan Tengah	1° 45' 3" S	112° 36' 54" E	2.00	2.00	41.68	20.84	43,76	21,88	11-Jun-20	
115	Marsudi	Telaga Antang	Kalimantan Tengah	1° 47' 3" S	112° 38' 17" E	1.78	1.78	35.98	20.21	37,78	21,22	11-Jun-20	
116	Marsudi	Telaga Antang	Kalimantan Tengah	1° 47' 2" S	112° 38' 21" E	2.00	2.00	40.43	20.21	42,45	21,22	11-Jun-20	
117	Sri Haryuni	Telaga Antang	Kalimantan Tengah	1° 47' 1" S	112° 38' 21" E	1.60	1.60	32.34	20.21	33,96	21,22	11-Jun-20	
118	Suharno	Telaga Antang	Kalimantan Tengah	1° 46' 9" S	112° 38' 15" E	1.00	1.00	21.07	21.07	22,12	22,12	11-Jun-20	
119	Suharno	Telaga Antang	Kalimantan Tengah	1° 47' 1" S	112° 38' 17" E	1.00	1.00	21.03	21.03	22,08	22,08	11-Jun-20	
120	Sudaryo	Telaga Antang	Kalimantan Tengah	1° 46' 2" S	112° 38' 55" E	1.00	1.00	19.28	19.28	20,24	20,24	11-Jun-20	
121	Sudaryo	Telaga Antang	Kalimantan Tengah	1° 46' 3" S	112° 38' 13" E	1.00	1.00	19.28	19.28	20,24	20,24	11-Jun-20	
122	Slamet Turyono	Telaga Antang	Kalimantan Tengah	1° 46' 2" S	112° 38' 26" E	1.00	1.00	19.77	19.77	20,76	20,76	11-Jun-20	
123	Slamet Turyono	Telaga Antang	Kalimantan Tengah	1° 46' 3" S	112° 38' 3" E	1.00	1.00	19.77	19.77	20,76	20,76	11-Jun-20	
124	Kartono-Saeran	Telaga Antang	Kalimantan Tengah	1° 46' 1" S	112° 38' 14" E	1.00	1.00	19.29	19.29	20,25	20,25	11-Jun-20	
125	Sudar-Tugiyo	Telaga Antang	Kalimantan Tengah	1° 46' 9" S	112° 38' 12" E	1.00	1.00	22.01	22.01	23,11	23,11	11-Jun-20	
126	Tugiyo	Telaga Antang	Kalimantan Tengah	1° 45' 3" S	112° 37' 18" E	1.00	1.00	22.01	22.01	23,11	23,11	11-Jun-20	
127	Tugiyo	Telaga Antang	Kalimantan Tengah	1° 46' 3" S	112° 38' 50" E	1.00	1.00	22.01	22.01	23,11	23,11	11-Jun-20	
128	Agus setiawan (Jumio)	Telaga Antang	Kalimantan Tengah	1° 46' 1" S	112° 38' 34" E	1.00	1.00	21.29	21.29	22,35	22,35	11-Jun-20	

No.	Smallholder Name	Location		Coordinate		Area (Ha)		Actual FFB production (MT/Year)	Yield (MT/Ha/ Year)	Projection FFB Production (MT/Year)	Yield Projection (MT/Ha/ Year)	Date of Joining	Date of Leaving
				Latitude (S)	Longitude (E)	Total Area	Production Area						
129	Agus setiawan (Jumio)	Telaga Antang	Kalimantan Tengah	1° 45' 3" S	112° 37' 15" E	1.00	1.00	21.29	21.29	22,35	22,35	11-Jun-20	
130	Gito Wiyono	Telaga Antang	Kalimantan Tengah	1° 46' 3" S	112° 38' 37" E	1.00	1.00	24.51	24.51	25,74	25,74	11-Jun-20	
131	Gito Wiyono	Telaga Antang	Kalimantan Tengah	1° 46' 3" S	112° 38' 34" E	1.35	1.35	28.32	20.98	29,74	22,03	11-Jun-20	
132	Sutarno	Telaga Antang	Kalimantan Tengah	1° 46' 2" S	112° 38' 42" E	0.98	0.98	22.27	22.72	23,38	23,86	11-Jun-20	
133	Sutarno	Telaga Antang	Kalimantan Tengah	1° 46' 2" S	112° 38' 46" E	1.00	1.00	22.72	22.72	23,86	23,86	11-Jun-20	
134	Paiman - Sutarno	Telaga Antang	Kalimantan Tengah	1° 45' 4" S	112° 37' 14" E	0.75	0.75	17.04	22.72	17,90	23,86	11-Jun-20	
135	Paiman - Sutarno	Telaga Antang	Kalimantan Tengah	1° 46' 1" S	112° 38' 3" E	0.75	0.75	17.04	22.72	17,90	23,86	11-Jun-20	
136	Sugito	Telaga Antang	Kalimantan Tengah	1° 46' 3" S	112° 38' 58" E	1.00	1.00	18.12	18.12	19,02	19,02	11-Jun-20	
137	Parjono	Telaga Antang	Kalimantan Tengah	1° 45' 3" S	112° 37' 28" E	0.66	0.66	13.60	20.67	14,28	21,70	11-Jun-20	
138	Sutrisno	Telaga Antang	Kalimantan Tengah	1° 45' 3" S	112° 37' 21" E	1.00	1.00	23.44	23.44	24,61	24,61	11-Jun-20	
139	Sutrisno	Telaga Antang	Kalimantan Tengah	1° 45' 3" S	112° 37' 20" E	0.41	0.41	9.29	22.93	9,75	24,08	11-Jun-20	
140	Budi Sugiarto	Telaga Antang	Kalimantan Tengah	1° 45' 1" S	112° 37' 28" E	2.00	2.00	47.22	23.61	49,58	24,79	11-Jun-20	
141	Budi Sugiarto	Telaga Antang	Kalimantan Tengah	1° 45' 3" S	112° 37' 31" E	1.32	1.32	31.16	23.61	32,72	24,79	11-Jun-20	
142	Budi Sugiarto	Telaga Antang	Kalimantan Tengah	1° 44' 1" S	112° 37' 27" E	1.04	1.04	24.55	23.61	25,78	24,79	11-Jun-20	
143	Surati Nursalim	Telaga Antang	Kalimantan Tengah	1° 45' 4" S	112° 37' 50" E	2.09	2.09	39.06	18.69	41,02	19,62	11-Jun-20	
144	Surati Nursalim	Telaga Antang	Kalimantan Tengah	1° 45' 3" S	112° 37' 53" E	1.57	1.57	29.34	18.69	30,81	19,62	11-Jun-20	
145	Surati Nursalim	Telaga Antang	Kalimantan Tengah	1° 44' 5" S	112° 37' 32" E	2.00	2.00	37.38	18.69	39,25	19,62	11-Jun-20	
146	Kuswanto	Tualan Hulu	Kalimantan Tengah	1° 46' 2" S	112° 39' 18" E	2.00	2.00	42.13	21.06	44,23	22,12	11-Jun-20	
147	Siti Misbah	Telaga Antang	Kalimantan Tengah	1° 44' 5" S	112° 38' 10" E	2.00	2.00	42.13	21.06	44,23	22,12	11-Jun-20	
148	Siti Misbah	Telaga Antang	Kalimantan Tengah	1° 44' 5" S	112° 38' 6" E	1.70	1.70	35.81	21.06	37,60	22,12	11-Jun-20	
149	Kiswanto	Tualan Hulu	Kalimantan Tengah	1° 46' 2" S	112° 39' 22" E	2.00	2.00	42.99	21.49	45,13	22,57	11-Jun-20	
150	Suwanti	Tualan Hulu	Kalimantan Tengah	1° 46' 2" S	112° 39' 32" E	2.00	2.00	42.99	21.49	45,13	22,57	11-Jun-20	
151	Suwanti	Tualan Hulu	Kalimantan Tengah	1° 46' 2" S	112° 39' 25" E	1.40	1.40	30.09	21.49	31,59	22,57	11-Jun-20	
152	Suhardi	Telaga Antang	Kalimantan Tengah	1° 45' 5" S	112° 37' 2" E	1.00	1.00	19.51	19.51	20,48	20,48	11-Jun-20	
153	Suhardi	Telaga Antang	Kalimantan Tengah	1° 44' 5" S	112° 38' 19" E	0.70	0.70	13.66	19.51	14,34	20,48	11-Jun-20	
154	Sapardi	Telaga Antang	Kalimantan Tengah	1° 44' 3" S	112° 36' 12" E	2.70	2.70	44.89	16.62	47,13	17,46	11-Jun-20	

No.	Smallholder Name	Location		Coordinate		Area (Ha)		Actual FFB production (MT/Year)	Yield (MT/Ha/ Year)	Projection FFB Production (MT/Year)	Yield Projection (MT/Ha/ Year)	Date of Joining	Date of Leaving
				Latitude (S)	Longitude (E)	Total Area	Production Area						
155	Suradi	Telaga Antang	Kalimantan Tengah	1° 45' 4" S	112° 37' 2" E	1.00	1.00	15.75	15.75	16,54	16,54	11-Jun-20	
156	Suradi	Tualan Hulu	Kalimantan Tengah	1° 46' 1" S	112° 39' 22" E	1.50	1.50	23.63	15.75	24,81	16,54	11-Jun-20	
157	Suratmiyati	Telaga Antang	Kalimantan Tengah	1° 45' 4" S	112° 35' 19" E	1.71	1.71	30.75	17.98	32,29	18,88	11-Jun-20	
158	Dasimin	Telaga Antang	Kalimantan Tengah	1° 44' 3" S	112° 37' 22" E	1.05	1.05	22.32	21.26	23,43	22,32	11-Jun-20	
159	Dasimin	Telaga Antang	Kalimantan Tengah	1° 44' 1" S	112° 38' 11" E	1.50	1.50	30.02	20.02	31,53	21,02	11-Jun-20	
160	Dasimin	Telaga Antang	Kalimantan Tengah	1° 44' 2" S	112° 38' 8" E	1.50	1.50	30.02	20.02	31,53	21,02	11-Jun-20	
161	Dasimin	Telaga Antang	Kalimantan Tengah	1° 44' 2" S	112° 38' 12" E	1.20	1.20	24.02	20.02	25,22	21,02	11-Jun-20	
162	Wiyardi	Telaga Antang	Kalimantan Tengah	1° 44' 2" S	112° 40' 1" E	2.00	2.00	36.47	18.23	38,29	19,14	11-Jun-20	
163	Syahno	Tualan Hulu	Kalimantan Tengah	1° 46' 1" S	112° 39' 18" E	2.70	2.70	66.15	24.50	69,46	25,73	11-Jun-20	
164	Syahno	Telaga Antang	Kalimantan Tengah	1° 46' 7" S	112° 36' 59" E	1.00	1.00	24.66	24.66	25,89	25,89	11-Jun-20	
165	Saptono(TRIMO)	Tualan Hulu	Kalimantan Tengah	1° 46' 2" S	112° 39' 23" E	2.00	2.00	41.79	20.89	43,88	21,94	11-Jun-20	
166	Saptono(TRIMO)	Telaga Antang	Kalimantan Tengah	1° 44' 5" S	112° 38' 19" E	1.00	1.00	26.06	26.06	27,36	27,36	11-Jun-20	
167	Saptono(TRIMO)	Tualan Hulu	Kalimantan Tengah	1° 46' 1" S	112° 39' 26" E	1.00	1.00	25.13	25.13	26,39	26,39	11-Jun-20	
168	Paing	Telaga Antang	Kalimantan Tengah	1° 45' 3" S	112° 37' 42" E	2.00	2.00	47.14	23.57	49,49	24,75	11-Jun-20	
169	Kardi	Telaga Antang	Kalimantan Tengah	1° 44' 1" S	112° 37' 23" E	2.00	2.00	44.07	22.03	46,27	23,13	11-Jun-20	
170	Kardi	Telaga Antang	Kalimantan Tengah	1° 44' 1" S	112° 37' 21" E	2.10	2.10	46.27	22.03	48,58	23,13	11-Jun-20	
171	Ruwadi	Telaga Antang	Kalimantan Tengah	1° 44' 2" S	112° 37' 7" E	2.00	2.00	48.31	24.16	50,73	25,36	11-Jun-20	
172	Siswadi	Telaga Antang	Kalimantan Tengah	1° 44' 1" S	112° 37' 5" E	1.20	1.20	28.99	24.16	30,44	25,36	11-Jun-20	
173	Shokibul Arifin	Telaga Antang	Kalimantan Tengah	1° 48' 4" S	112° 38' 24" E	0.75	0.75	15.48	20.64	16,26	21,68	11-Jun-20	
174	Suyatno	Telaga Antang	Kalimantan Tengah	1° 48' 4" S	112° 38' 34" E	0.99	0.99	18.88	19.07	19,82	20,02	11-Jun-20	
175	Suyatno	Telaga Antang	Kalimantan Tengah	1° 48' 5" S	112° 38' 29" E	2.21	2.21	42.04	19.07	44,14	20,02	11-Jun-20	
176	Suyatno	Telaga Antang	Kalimantan Tengah	1° 48' 5" S	112° 38' 19" E	0.75	0.75	14.30	19.07	15,01	20,02	11-Jun-20	
177	Sumarmun	Telaga Antang	Kalimantan Tengah	1° 48' 5" S	112° 38' 31" E	2.21	2.21	47.46	21.52	49,83	22,60	11-Jun-20	
178	Elda Erdayani	Telaga Antang	Kalimantan Tengah	1° 48' 5" S	112° 38' 26" E	1.50	1.50	17.64	11.76	18,52	12,35	11-Jun-20	
179	Elda Erdayani	Telaga Antang	Kalimantan Tengah	1° 48' 5" S	112° 38' 22" E	1.00	1.00	23.38	23.35	24,55	24,52	11-Jun-20	
180	Sugito	Telaga Antang	Kalimantan Tengah	1° 49' 0" S	112° 38' 26" E	1.71	1.71	30.17	17.64	31,68	18,53	11-Jun-20	



No.	Smallholder Name	Location		Coordinate		Area (Ha)		Actual FFB production (MT/Year)	Yield (MT/Ha/ Year)	Projection FFB Production (MT/Year)	Yield Projection (MT/Ha/ Year)	Date of Joining	Date of Leaving
				Latitude (S)	Longitude (E)	Total Area	Production Area						
181	Sugito	Telaga Antang	Kalimantan Tengah	1° 49' 5" S	112° 38' 22" E	1.01	1.01	17.79	17.64	18,67	18,53	11-Jun-20	
182	Sugito	Telaga Antang	Kalimantan Tengah	1° 49' 2" S	112° 38' 21" E	2.01	2.01	35.41	17.64	37,18	18,53	11-Jun-20	
183	Sugito	Telaga Antang	Kalimantan Tengah	1° 48' 8" S	112° 33' 53" E	1.10	1.10	22.89	20.81	24,03	21,85	11-Jun-20	
184	Sugito	Telaga Antang	Kalimantan Tengah	1° 48' 5" S	112° 38' 15" E	1.86	1.86	32.85	17.64	34,50	18,53	11-Jun-20	
185	Giman	Telaga Antang	Kalimantan Tengah	1° 48' 5" S	112° 38' 11" E	1.50	1.50	30.74	20.50	32,28	21,52	11-Jun-20	
186	Giman	Telaga Antang	Kalimantan Tengah	1° 48' 5" S	112° 38' 22" E	0.75	0.75	15.37	20.50	16,14	21,52	11-Jun-20	
187	Khayatun	Telaga Antang	Kalimantan Tengah	1° 48' 5" S	112° 38' 23" E	2.00	2.00	40.99	20.50	43,04	21,52	11-Jun-20	
188	Muchtarom	Telaga Antang	Kalimantan Tengah	1° 48' 5" S	112° 38' 17" E	0.75	0.75	18.24	24.32	19,15	25,53	11-Jun-20	
189	Aris Prayitno	Telaga Antang	Kalimantan Tengah	1° 49' 2" S	112° 38' 17" E	2.09	2.09	33.97	16.22	35,67	17,03	11-Jun-20	
190	Yanus	Telaga Antang	Kalimantan Tengah	1° 44' 5" S	112° 35'36" E							11-Jun-20	26-Dec-22
191	Yanus	Telaga Antang	Kalimantan Tengah	1° 44' 4" S	112° 35'27" E							11-Jun-20	26-Dec-22
192	Yanus	Telaga Antang	Kalimantan Tengah	1° 45' 0" S	112° 35'33" E							11-Jun-20	26-Dec-22
193	Yanus	Telaga Antang	Kalimantan Tengah	1° 46' 1" S	112° 35'48" E							11-Jun-20	26-Dec-22
194	Yanus	Telaga Antang	Kalimantan Tengah	1° 44' 5" S	112° 35'31" E							11-Jun-20	26-Dec-22
195	Dedie	Telaga Antang	Kalimantan Tengah	1° 45' 4" S	112° 36' 0" E							11-Jun-20	26-Dec-22
196	Dedie	Telaga Antang	Kalimantan Tengah	1° 44' 4" S	112° 35'31" E							11-Jun-20	26-Dec-22
197	Rait Yanus	Telaga Antang	Kalimantan Tengah	1° 45' 4" S	112° 35'59" E							11-Jun-20	26-Dec-22
198	Rait Yanus	Telaga Antang	Kalimantan Tengah	1° 44' 4" S	112° 35'26" E							11-Jun-20	26-Dec-22
199	Yakob Mulyadie	Telaga Antang	Kalimantan Tengah	1° 47' 1" S	112° 35'26" E							11-Jun-20	26-Dec-22
200	Siswono	Telaga Antang	Kalimantan Tengah	01° 48' 05.77" S	112° 35' 39.27" E	1.77	1.77	36.30	20.51	38,11	21,53	02-Jan-22	
201	Siswono	Telaga Antang	Kalimantan Tengah	01° 50' 26.12" S	112° 35' 44.25" E	3.74	3.74	76.70	20.51	80,54	21,53	02-Jan-22	
202	Siswono	Telaga Antang	Kalimantan Tengah	01° 48' 42.19" S	112° 35' 56.33" E	3.71	3.71	76.09	20.51	79,89	21,53	02-Jan-22	
203	Siswono	Telaga Antang	Kalimantan Tengah	01° 47' 37.23" S	112° 36' 35.88" E	1.23	1.23	25.23	20.51	26,49	21,53	02-Jan-22	
204	Siswono	Telaga Antang	Kalimantan Tengah	01° 47' 15.86" S	112° 39' 01.36" E	3.09	3.09	63.37	20.51	66,54	21,53	02-Jan-22	
205	Siswono	Telaga Antang	Kalimantan Tengah	01° 47' 33.71" S	112° 36' 37.19" E	1.93	1.93	39.58	20.51	41,56	21,53	02-Jan-22	
206	Siswono	Telaga Antang	Kalimantan Tengah	01° 48' 04.55" S	112° 36' 01.07" E	1.71	1.71	35.07	20.51	36,82	21,53	02-Jan-22	

No.	Smallholder Name	Location		Coordinate		Area (Ha)		Actual FFB production (MT/Year)	Yield (MT/Ha/ Year)	Projection FFB Production (MT/Year)	Yield Projection (MT/Ha/ Year)	Date of Joining	Date of Leaving
				Latitude (S)	Longitude (E)	Total Area	Production Area						
207	Siswono	Telaga Antang	Kalimantan Tengah	01° 47' 42.39" S	112° 35' 27.90" E	2.31	2.31	47.37	20.51	49,74	21,53	02-Jan-22	
208	Siswono	Telaga Antang	Kalimantan Tengah	01° 47' 37.59" S	112° 35' 20.13" E	1.00	1.00	21.37	21.37	22,44	22,44	02-Jan-22	
209	Slamet purwanto	Telaga Antang	Kalimantan Tengah	01° 48' 12.74" S	112° 35' 43.96" E	2.00	2.00	51.20	25.60	53,76	26,88	02-Jan-22	
210	Slamet purwanto	Telaga Antang	Kalimantan Tengah	01° 48' 17.72" S	112° 35' 48.80" E	1.80	1.80	47.04	26.13	49,39	27,44	02-Jan-22	
211	Suyatno	Telaga Antang	Kalimantan Tengah	01° 48' 19.50" S	112° 35' 45.35" E	2.06	2.06	52.40	25.44	55,02	26,71	02-Jan-22	
212	Suyatno	Telaga Antang	Kalimantan Tengah	01° 48' 35.59" S	112° 35' 39.74" E	1.89	1.89	48.07	25.44	50,48	26,71	02-Jan-22	
213	Suyatno (Ika Dwi Fitriani)	Telaga Antang	Kalimantan Tengah	01° 50' 24.09" S	112° 35' 48.78" E	1.97	1.97	50.11	25.44	52,61	26,71	02-Jan-22	
214	Rini wahyuni	Telaga Antang	Kalimantan Tengah	01° 48' 34.93" S	112° 35' 51.08" E	1.31	1.31	31.57	24.10	33,14	25,30	02-Jan-22	
215	Rini wahyuni	Telaga Antang	Kalimantan Tengah	01° 48' 35.79" S	112° 35' 46.53" E	0.97	0.97	25.30	26.08	26,56	27,38	02-Jan-22	
216	Rini wahyuni	Telaga Antang	Kalimantan Tengah	01° 48' 31.14" S	112° 35' 47.41" E	1.20	1.20	30.24	25.20	31,76	26,46	02-Jan-22	
217	Marlan	Telaga Antang	Kalimantan Tengah	01° 49' 57.56" S	112° 35' 53.33" E	0.68	0.68	16.48	24.24	17,31	25,45	02-Jan-22	
218	Marlan	Telaga Antang	Kalimantan Tengah	01° 48' 03.99" S	112° 35' 34.24" E	4.28	4.28	96.71	22.60	101,55	23,73	02-Jan-22	
219	Katini	Telaga Antang	Kalimantan Tengah	01° 49' 52.30" S	112° 35' 56.04" E	1.27	1.27	27.78	21.88	29,17	22,97	02-Jan-22	
220	Katini (Slamet Purwanto)	Telaga Antang	Kalimantan Tengah	01° 48' 09.09" S	112° 35' 39.42" E	1.97	1.97	43.10	21.88	45,25	22,97	02-Jan-22	
221	Katini	Telaga Antang	Kalimantan Tengah	01° 47' 36.87" S	112° 35' 16.33" E	2.00	2.00	43.75	21.88	45,94	22,97	02-Jan-22	
222	Katini	Telaga Antang	Kalimantan Tengah	01° 49' 49.36" S	112° 35' 59.73" E	1.99	1.99	43.53	21.88	46.2.2	22,97	02-Jan-22	
Total						304.82	304.82	6,447.13	21.52	6,770.00	22.21		

